

City of Detroit
OFFICE OF THE CITY CLERK

Janice M. Winfrey
City Clerk

Vivian A. Hudson
Deputy City Clerk

DEPARTMENTAL REFERENCE COMMUNICATION

Monday, July 27, 2009

To: The Department or Commission Listed Below

From: Janice M. Winfrey, Detroit City Clerk

The following petition is herewith referred to you for report and recommendation to the City Council.

In accordance with that body's directive, kindly return the same with your report in duplicate within four (4) weeks.

DPW - CITY ENGINEERING DIVISION ENVIRONMENTAL AFFAIRS DEPARTMENT

3670 GES, request for ROW permit for the installation of monitoring wells at 13901 Wyoming Ave.

RECEIVED
JUL 29 2009

Handwritten initials: CED, TED, and NOEL with a yellow highlight.

200 Coloman A. Young Municipal Center • Detroit, Michigan 48226-3400
(313) 224-3260 • Fax (313) 224-1466

Handwritten initials: 9D, 190, and a signature.



**Groundwater
& Environmental Services, Inc.**

10381 Citation Drive, Suite 500 • Brighton, Michigan 48116 • (810) 227-0002 • (810) 227-0008

June 22, 2009

City Clerk Office
City of Detroit
200 Coleman A. Young Municipal Center
2 Woodward Avenue
Detroit, Michigan 48226

3670

RE: Request to Petition City Council
Installation of Monitoring Wells at
13901 Wyoming Avenue
Detroit, Michigan

To whom it may concern:

Groundwater & Environmental Services, Inc. (GES), on behalf of Shell Oil Products (Shell), is requesting a petition number for the Right-of-Way (ROW) permit intended for the Kendall Street, adjacent to the above referenced address. GES would like to install one (1) monitoring well in the southern ROW of Kendall Street, per the attached site plan. GES will not need to close any portion of the affected roadways in order to complete the proposed ROW work. Therefore, please find enclosed a Certificate of Insurance, meeting all city requirements, a site map with the proposed monitoring well location, and a monitoring well detail diagram. GES proposes to commence work effective August 3, 2009. This work is being performed as part of an on-going environmental investigation, therefore the monitoring well will need to remain in place for approximately 5 - 10 years. Upon completion of the monitoring well, a groundwater sample will be collected for analysis on a biannual basis. The monitoring well will be properly abandoned when it is no longer required.

Should you require any additional information, please contact Jeff Bernitsen, Project Manager, at (800) 368-0337, ext. 3351.

Sincerely,

Anne Herrera
Staff Environmental Scientist

Enclosure

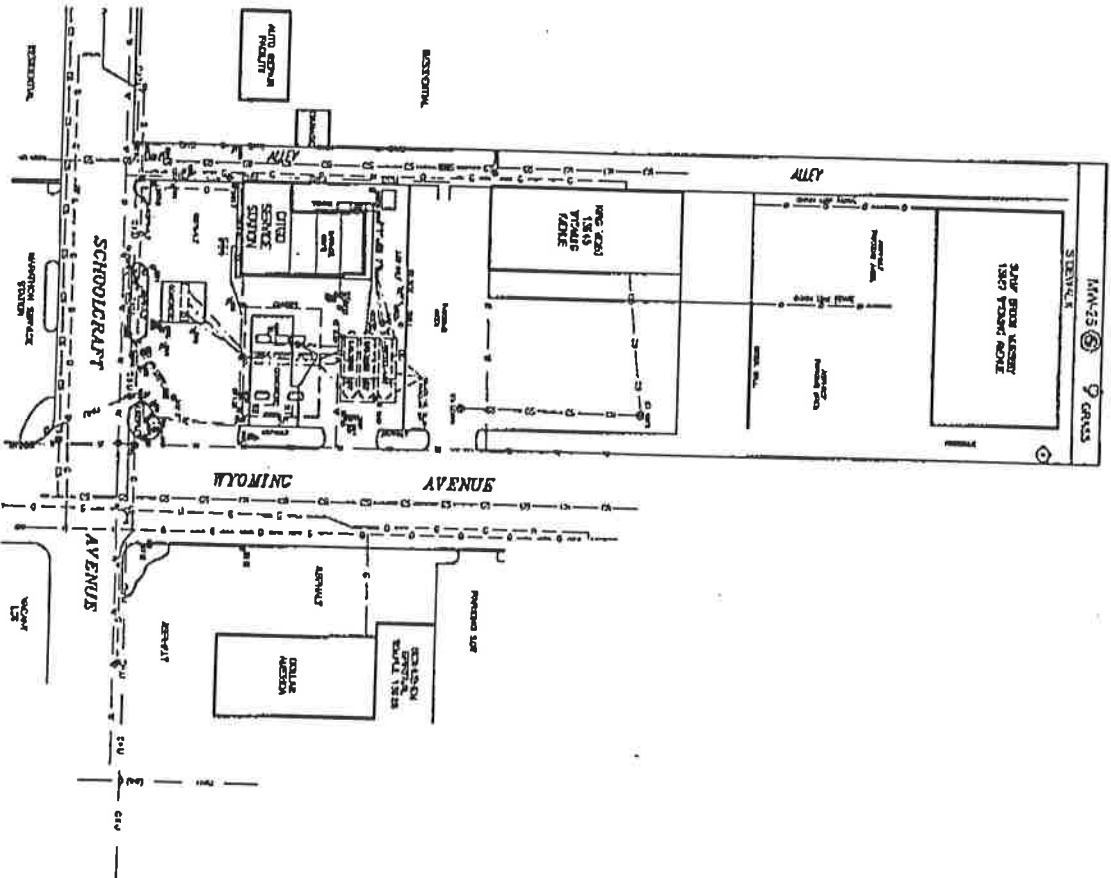
Cc: Hischke - DEA

JUN 24 10 22 AM '09

KERDALL STREET

MAN-25

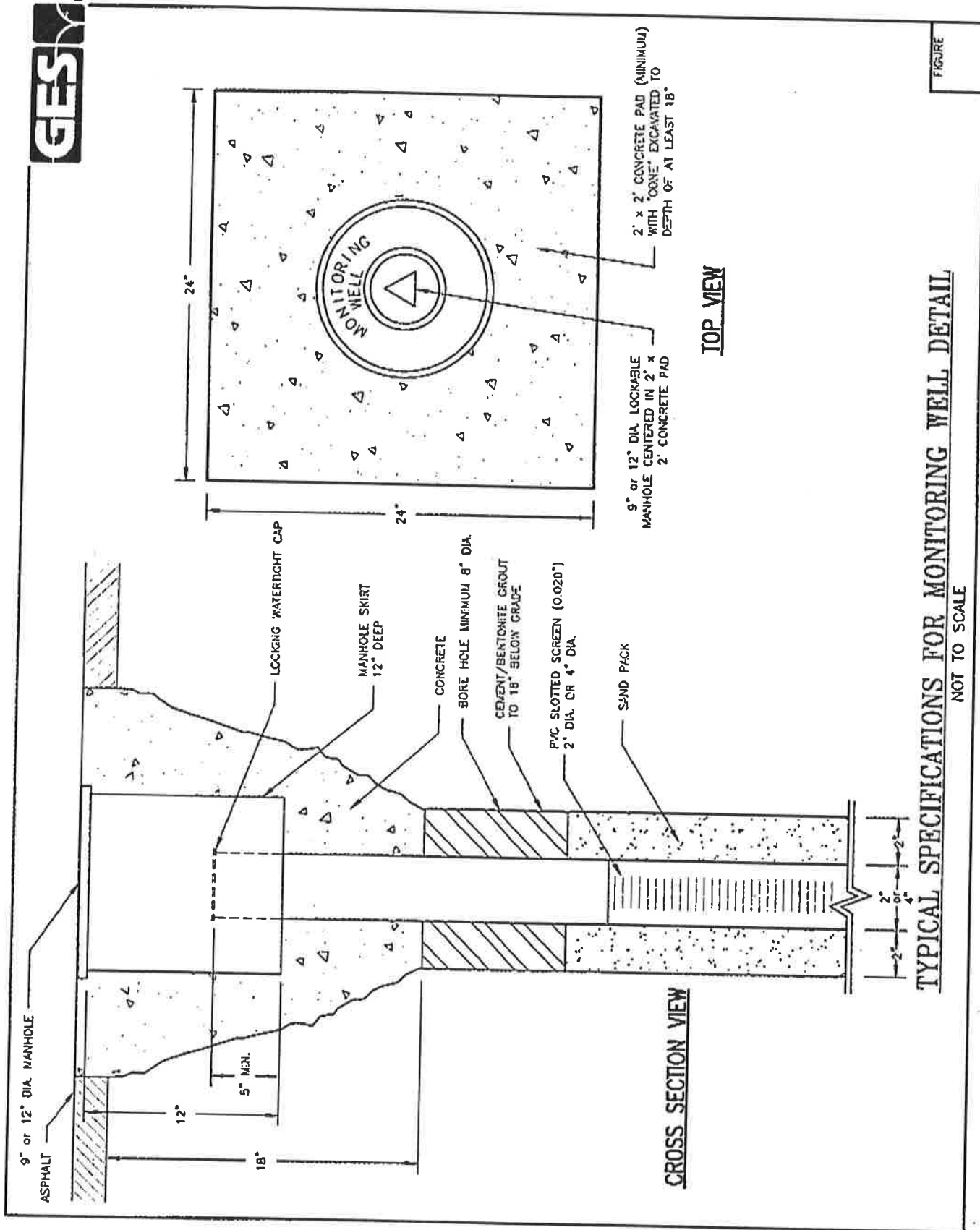
GRASS



LEGEND

- FORMER KEROSENE UST
- FORMER 1K GALLON WASTE OIL TANK
- FORMER KEROSENE DISPENSER
- FORMER DIESELS DISPENSER
- USED OIL AST
- DITCH BASIN
- UTILITY POLE
- UTILITY MANHOLE
- FIRE HYDRANT
- DIESEL DISPENSER
- DISPENSER ISLAND
- MONITORING WEL
- DESTROYED MONITORING WEL
- SLUMP WELL
- UNDERGROUND GAS LINE
- UNDERGROUND WATER LINE
- OVERHEAD UTILITIES
- DOLEHEDD SEWER LINE
- UNDERGROUND ELECTRIC
- PROPOSED MONITORING WEL

DATE AM	PROPOSED SOIL BORING MAP
DATE F	June 2009
PROJECT N	FORMER SHELL STATION #13792
	W/C # 241-3491-1901
	13901 WYOMING
	DETROIT, MICHIGAN
Groundwater & Environmental Services, Inc.	
1331 CANTON DRIVE, S.E. 500, BRYANTON, MICHIGAN 49115	
SCALE IN FEET	DATE
0 30	06-18-2009
	FIGURE



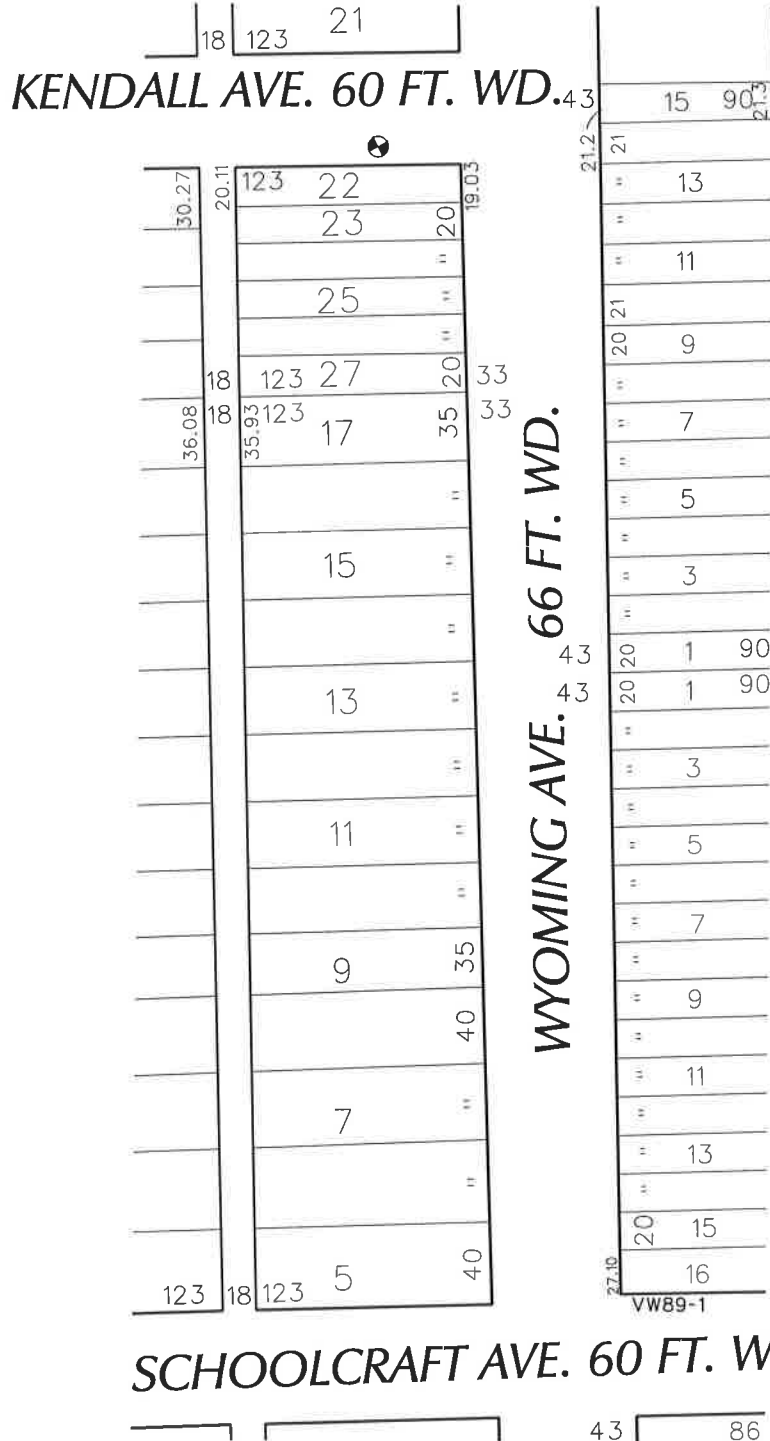
TOP VIEW

CROSS SECTION VIEW

TYPICAL SPECIFICATIONS FOR MONITORING WELL DETAIL
 NOT TO SCALE

FIGURE

M:\Graphics\100-Well\Z\ketches\DETAIL.S11-Standard well head detail 2 or 4 (inch)\2manhole.dwg, E:\jg



AREA OF ENCROACHMENT (with monitoring wells)

(FOR OFFICE USE ONLY)

CARTO 9 D

B						REQUEST ENCROACHMENT AT 13901 WYOMING WITH MONITORING WELLS	CITY OF DETROIT CITY ENGINEERING DEPARTMENT SURVEY BUREAU		
A									
DESCRIPTION		DRWN	CHKD	APPD	DATE				
DRAWN BY		CHECKED						JOB NO.	
DATE		APPROVED						DRWG. NO.	
							01-01	X3670.dgn	