

City of Detroit
OFFICE OF THE CITY CLERK

Janice M. Winfrey
City Clerk

Vivian A. Hudson
Deputy City Clerk

DEPARTMENTAL REFERENCE COMMUNICATION

Friday, June 26, 2009

To: The Department or Commission Listed Below

From: Janice M. Winfrey, Detroit City Clerk

The following petition is herewith referred to you for report and recommendation to the City Council.

In accordance with that body's directive, kindly return the same with your report in duplicate within four (4) weeks.

CITY PLANNING COMMISSION DPW - CITY ENGINEERING DIVISION

3539 *Downtown Development Authority, requesting approval of "Paradise Valley" and "Harmonie Park" Living History Walks at the entry/exit points of the park; a historical marker; and public art sculptures throughout the park.*

RECEIVED
JUL 07 2009

?

for
NP
10/27/09

City of Detroit



Downtown Development Authority
500 Griswold • Suite 2200
Detroit, Michigan 48226
Phone: 313 963 2940
Fax: 313 963 8839

3539

June 2, 2009

Councilwoman Barbara Rose-Collins
Chairperson, Planning and Economic Development Standing Committee
Honorable Detroit City Council
Coleman A. Young Municipal Center, Suite 1340
2 Woodward Avenue
Detroit, MI 48226

Attention: Office of the City Clerk

RE: Paradise Valley Cultural & Entertainment District Project Petition to Council for Authorization and Acceptance of Public Art Elements

As you are aware, the DDA was assigned the task of creating the Paradise Valley Cultural and Entertainment District Project, to be located in the area bounded by Madison Avenue to the North, John R to the west, Broadway and Gratiot to the south and Alley west of Brush to the east (the "Project Area"). The DDA staff has worked diligently toward completing the project, and is currently working on implementing the second phase of improvements for the District as a part of the Paradise Valley Streetscape and Open Space Improvement Project. The DDA requests City Council acceptance and approval of:

- "Paradise Valley" and "Harmonie Park" Living History Walks to be located along the north-south and east-west entry/exit points of the park (Attachment 1)
- The Bea Buck historical marker located in the park (Attachment 2)
- Public Art Sculptures throughout the park (Attachment 3)

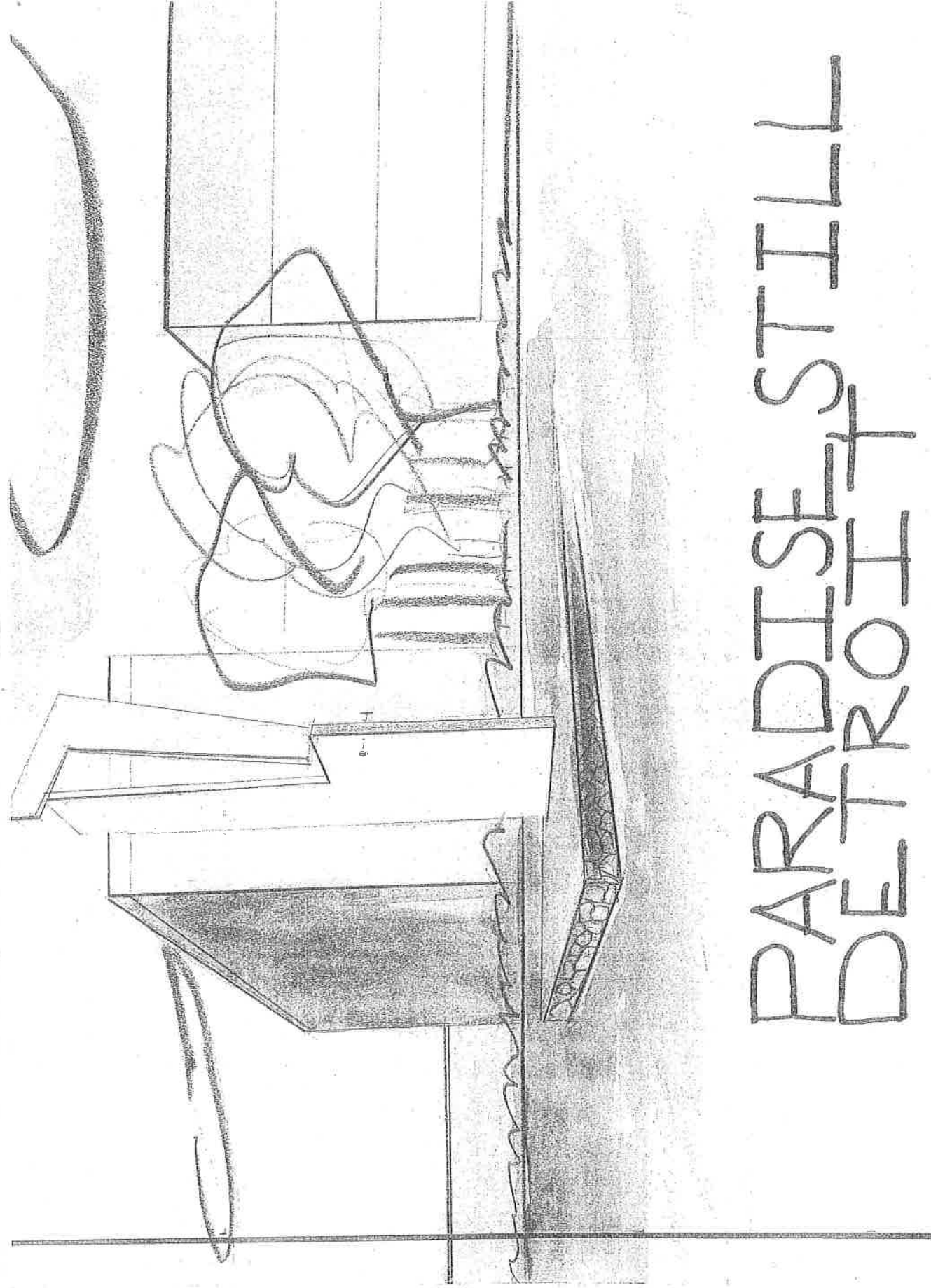
Attached for your review and consideration are images of the proposed elements to be constructed in the Project Area. Please feel free to contact me at 313.237.4604 if you have any questions or comments, or need additional information regarding the Project.

Thank You,

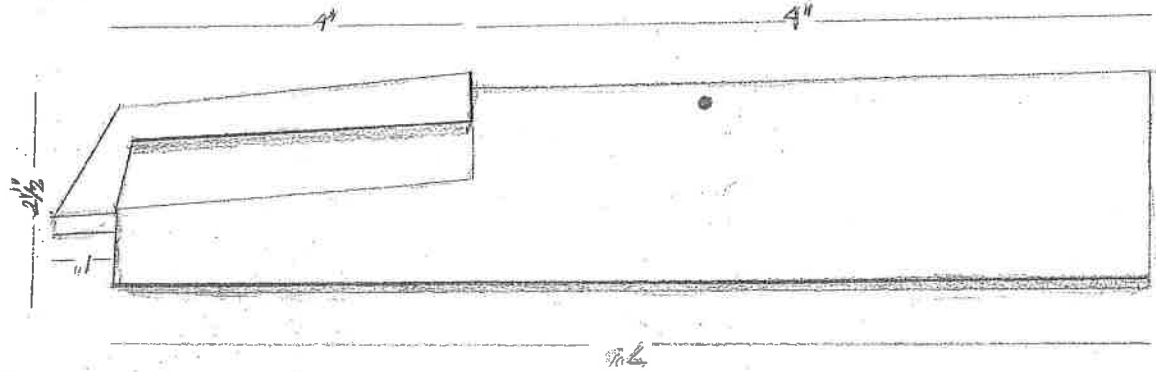
A handwritten signature in black ink, appearing to read "Waymon Guillebeaux", written over a horizontal line.

Waymon Guillebeaux
Authorized Agent, DDA

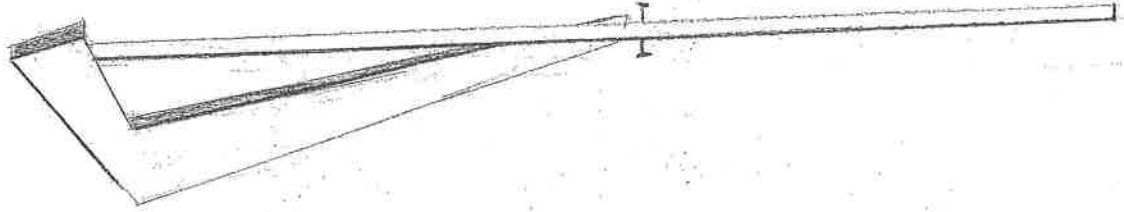
cc: George Jackson, DDA
Malik Goodwin, DDA
Rochelle Drakeford-Collins, PDD
Greg Moots, CPC
Tim Karl, DRD



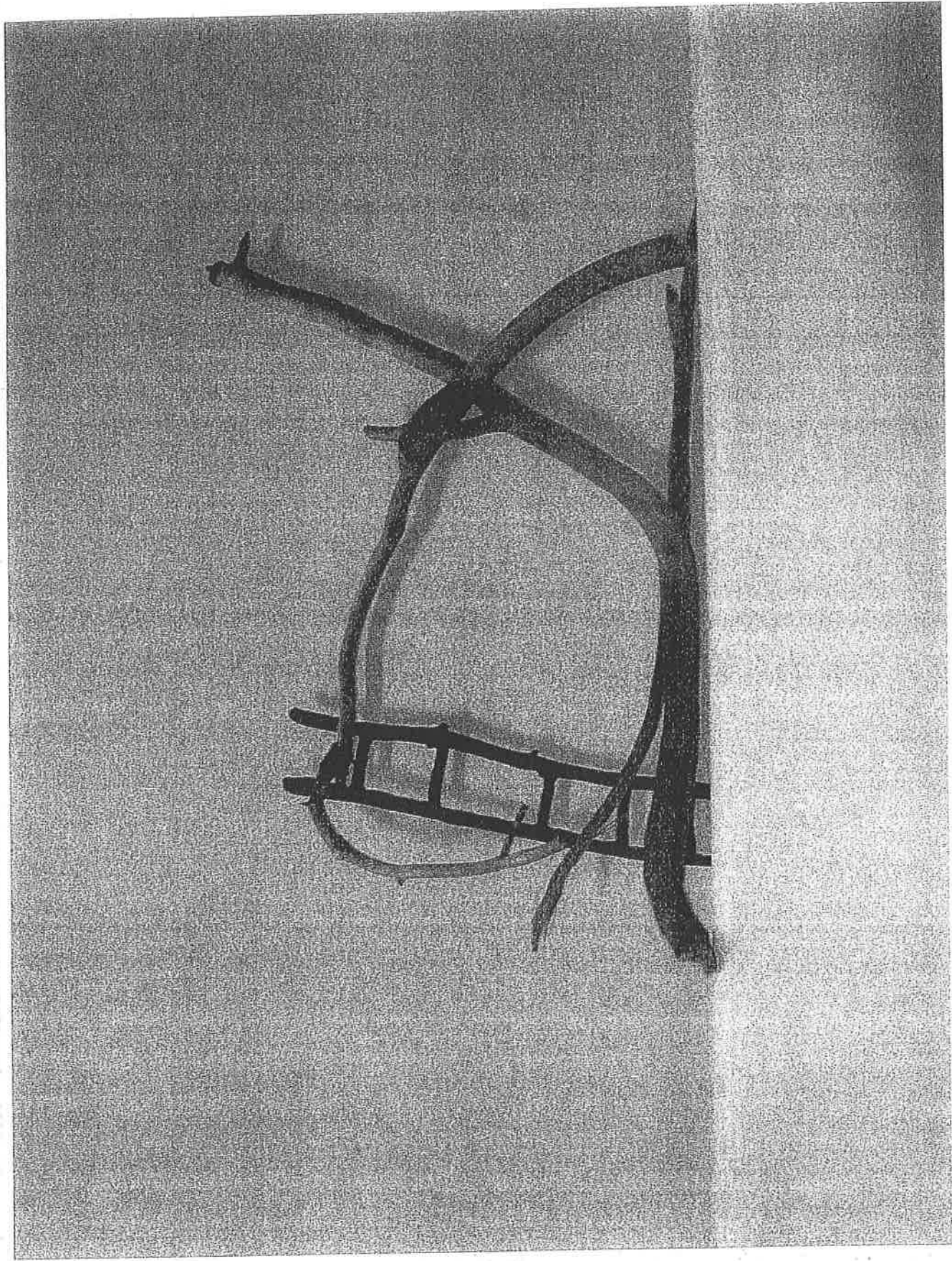
PARADISE + STILL
DETROIT



FRONT



SIDE



1#

