

City of Detroit
OFFICE OF THE CITY CLERK

Janice M. Winfrey
City Clerk

Vivian A. Hudson
Deputy City Clerk

DEPARTMENTAL REFERENCE COMMUNICATION

Thursday, June 25, 2009

To: The Department or Commission Listed Below

From: Janice M. Winfrey, Detroit City Clerk

The following petition is herewith referred to you for report and recommendation to the City Council.

In accordance with that body's directive, kindly return the same with your report in duplicate within four (4) weeks.

DPW - CITY ENGINEERING DIVISION

3532 *The Detroiter Bar, requesting permanent encroachment to sidewalk in front of 655 Beaubien.*

RECEIVED
JUN 30 2009

ZOF 356

CED
TED
ANDEL

THE DETROITER BAR

JONMAR, INC.
655 BEAUBIEN
DETROIT, MICHIGAN 48226
(313) 963-3355

AY 09 11: 59

CITY CLERK -

3532

CITY CLERK

Honorable Janice M. Winfrey
Office of the City Clerk, Room 200
200 Coleman A. Young Municipal Center
Detroit, Michigan 48226
(313) 224-3266

May 26, 2009

Regarding: Permanent Encroachment, Request for Petition Number-(Jonmar, Inc., d/b/a Detroit Bar)

To Whom It May Concern,

I, John Kefallinos, President of Jonmar, Inc., manager and owner of the Detroit Bar, located at 655 Beaubien, in Detroit, am requesting your permission legalize a permanent encroachment to the sidewalk area located in the front of my business establishment, 655 Beaubien.

With your approval our 1st floor, outdoor deck, would encroach 6 feet into the sidewalk, leaving a remaining 7 foot clearance, free of obstruction. The measurements of the encroachment requested are as follows; 6'-4 1/2" x 32'-11 3/4".

A clearance of at least Five Feet, (5), between my deck and the street curb or any form of obstruction will be met at all times.

This is a request for a permanent encroachment, provided that all City requirements and Fee's are up to date.

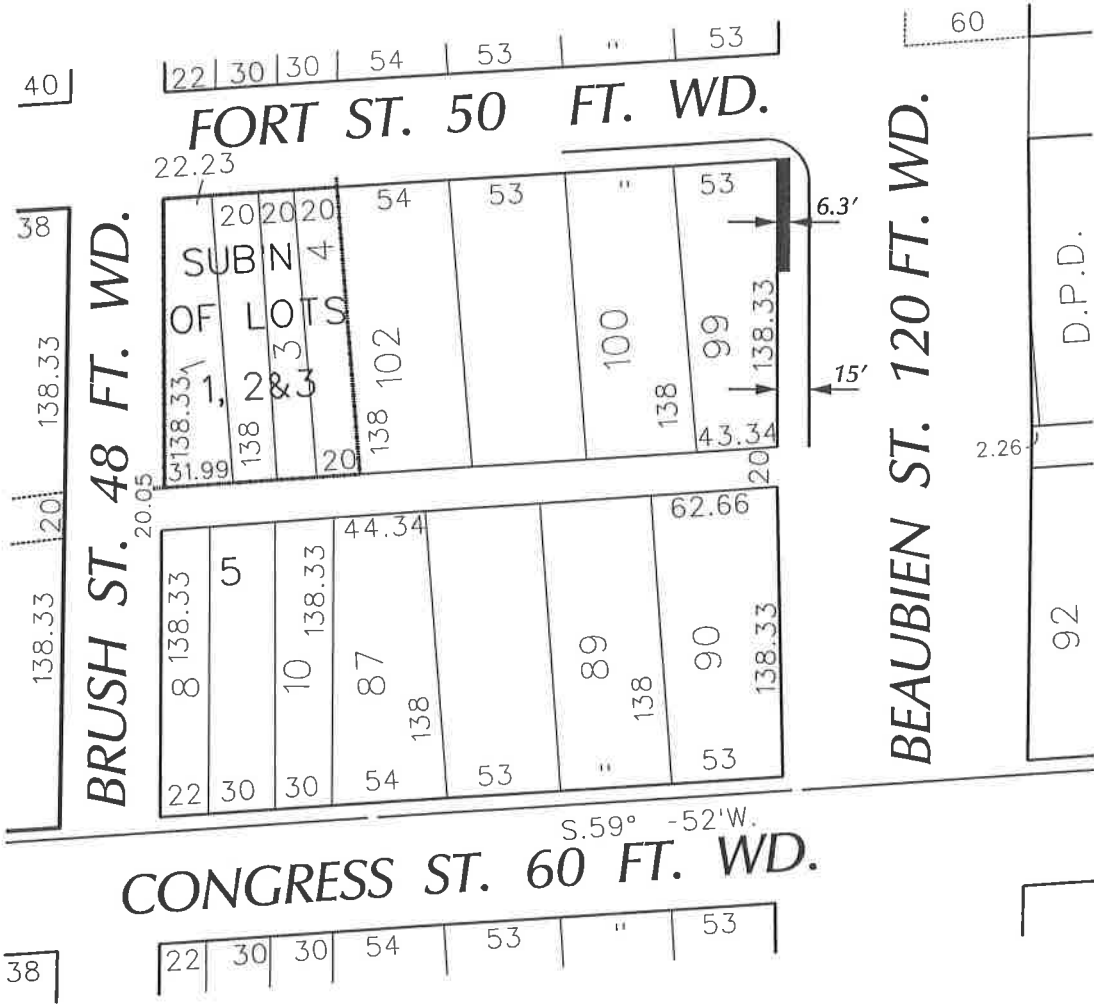
If you have any questions please call Jacquelyn Lukens (313) 964-0333.

Sincerely,



John Kefallinos
Owner & Manager
The Detroit Bar

JONMAR, INC.
 655 BEAUBIEN
 DETROIT, MICHIGAN 48226
 C/O JACQUELYN LUKENS
 PHONE NO. 313 964 0333



- AREA OF ENCROACHMENT

(FOR OFFICE USE ONLY)

CARTO 28 F

B						REQUEST FOR ENCROACHMENT AT 655 BEAUBIEN	CITY OF DETROIT CITY ENGINEERING DEPARTMENT SURVEY BUREAU	
A								JOB NO. 01-01
DESCRIPTION		DRWN	CHKD	APPD	DATE			DRWG. NO. X3532.dgn
DRAWN BY		REVISIONS						
DATE		CHECKED						
10-20-09		APPROVED						