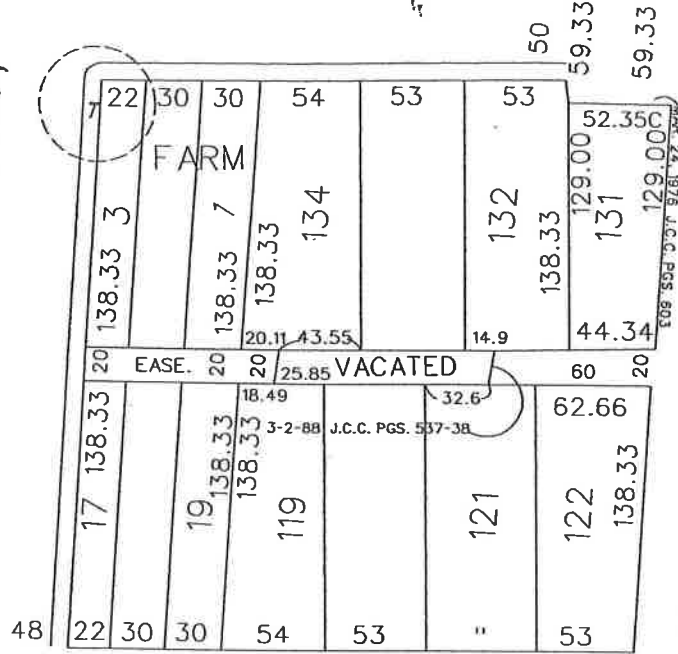




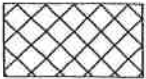
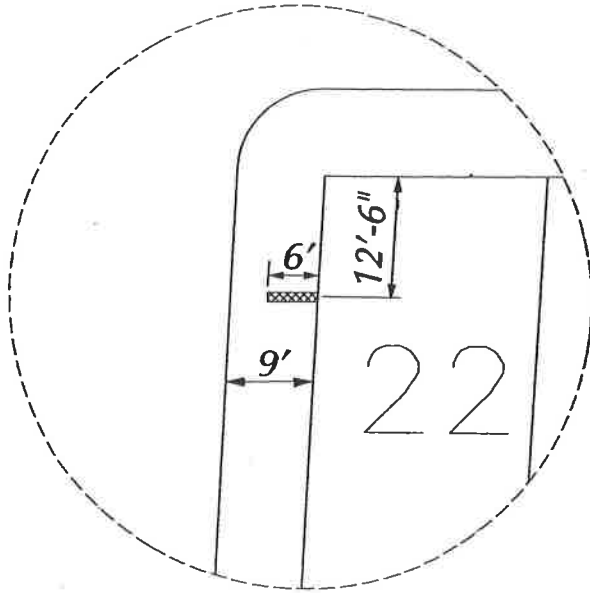
MONROE AVE. 50 FT. WD.

BRUSH ST. 50 FT. WD.

BEAUBIEN ST 60 FT. WD.



LAFAYETTE AVE. 50 FT. WD.



— REQUESTED AREA OF ENCROACHMENT

CARTO 28 A

(FOR OFFICE USE ONLY)

B					
A					
DESCRIPTION		DRWN	CHKD	APPD	DATE
REVISIONS					
DRAWN BY	KSM		CHECKED		
DATE	6/17/09		APPROVED		

REQUEST FOR ENCROACHMENT IN AREA
 BOUNDED BY
 LAFAYETTE, BRUSH, MONROE AND BEAUBIEN

CITY OF DETROIT
 CITY ENGINEERING DEPARTMENT
 SURVEY BUREAU

JOB NO. 01-01

DRWG. NO. x3017(rev)