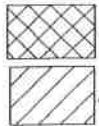
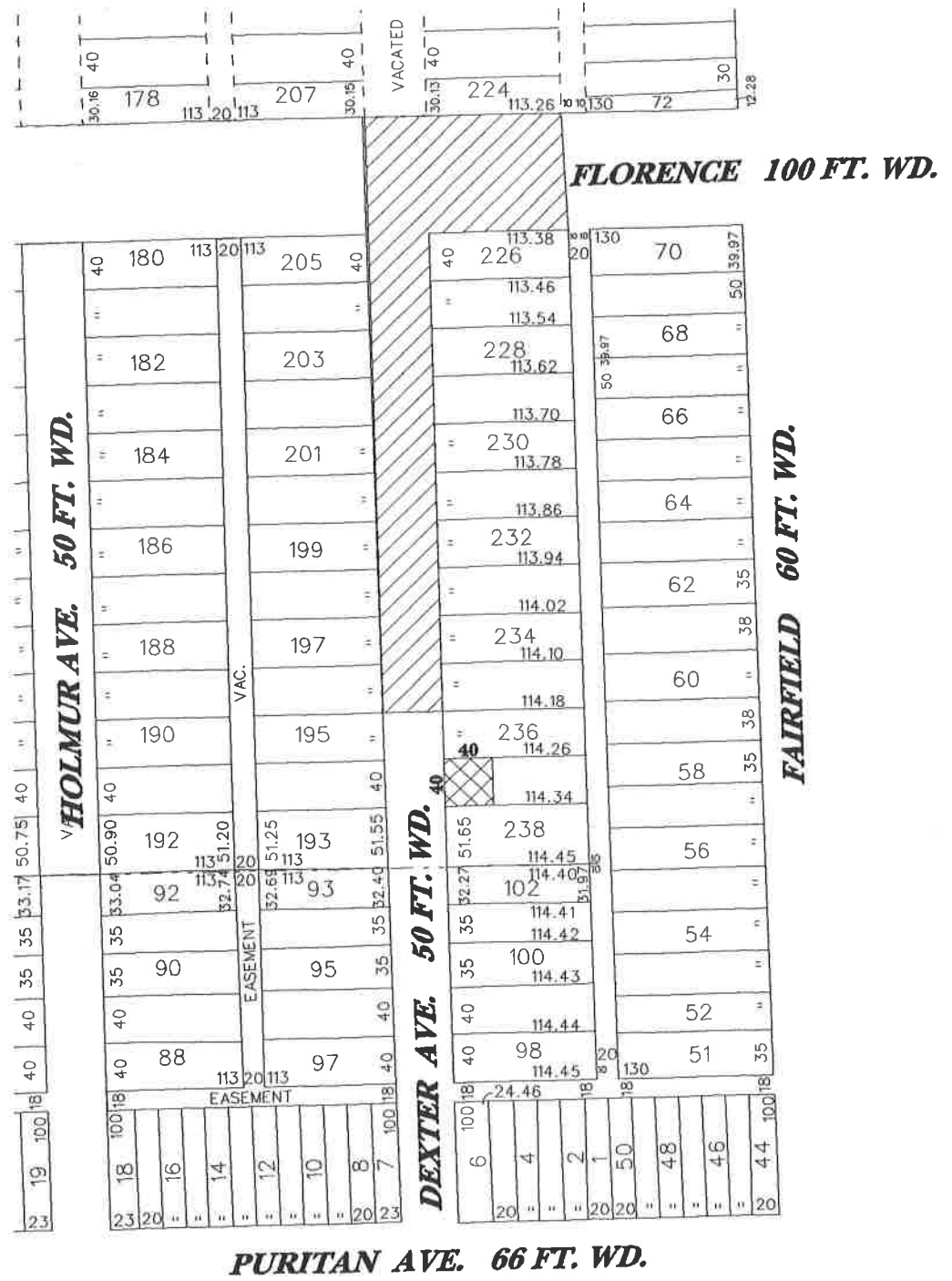




**REVISION**



**-DEDICATION OF AN EASEMENT**  
 (FOR A THREE POINT TURN AROUND)

**-REQUESTED CONVERSION TO EASEMENT**

(FOR OFFICE USE ONLY)

**CARTO 25 C**

B					
A					
DESCRIPTION	DRWN	CHKD	APPD	DATE	
REVISIONS					
DRAWN BY	CHECKED				
DATE	APPROVED				
2/25/08					

**REQUESTED CONVERSION TO EASEMENT A PORTION OF DEXTER ST. 50 FT. WD., A PORTION OF FLORENCE ST. 100 FT. WD. AND THE DEDICATION OF LAND FOR A THREE POINT TURN AROUND NORTH OF PURITAN AND WEST OF HOLMUR.**

**CITY OF DETROIT**  
 CITY ENGINEERING DEPARTMENT  
 SURVEY BUREAU

JOB NO. **01-01**

DRWG. NO. **x3368.dgn**