

City of Detroit  
OFFICE OF THE CITY CLERK

Janice M. Winfrey  
City Clerk

Vivian A. Hudson  
Deputy City Clerk

RECEIVED  
DEC - 8 2008

DEPARTMENTAL REFERENCE COMMUNICATION

Thursday, December 04, 2008

To: The Department or Commission Listed Below.

From: Janice M. Winfrey, Detroit City Clerk

The following petition is herewith referred to you for report and recommendation to the City Council.

In accordance with that body's directive, kindly return the same with your report in duplicate within four (4) weeks.

PUBLIC WORKS DEPARTMENT

3092 New Hope Tabernacle, requesting permit for berm parking in area surrounding 20221 Lahser.

BTW H. HESSEL  
+ TROJAN

CEB  
TED  
NOEL

123 A 341

3092

New Hope Tabernacle  
20221 Lahser Road Detroit, Michigan 48219  
(313) 535-7999

November 18, 2008

Detroit City Council  
200 Coleman A. Young Municipal Center  
2 Woodward Avenue  
Detroit, Michigan 48226

Attention Mrs. Monica Conyers Council President and Council Members

Ladies and Gentleman

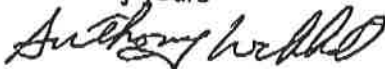
**SUBJECT: PERMIT FOR BERM PARKING**

2008 DEC -2 P 5:18  
DETROIT  
CITY CLERK

President Conyers and City Council Members; I am Anthony Lockhart Representative for New Hope Tabernacle Apostolic Church located in the Great City of Detroit, 20221 Lahser Road Detroit, Michigan 48219. We are requesting a permit to allow us to park on the berm legally. We are parking on the berm now, and have parked there since 1974 when we first purchased this property and moved here. The Lutheran Church that previously owned the property prior to 1974, also parked on the berm. We moved on Lahser in 1974 and gravel was on the berm and in our parking lot. Since then; we have improved our parking lot and the berm with asphalt paving. We have 23 striped parking spots on the berm. We are asking for a permit or written permission to park on the berm. If we are not allowed to park on the berm, it would pose a great inconvenience to our neighbors. We would have to park in front of their homes. However, if we are allowed to park on the berm legally, this would alleviate 23 cars from parking in front of our neighbors homes, either on Lahser or adjacent streets. Our weekly Services have our parking

lot almost full and the berm nearly full. Sundays; our parking lot is completely full and the berm is full also. This is why we are requesting a permit or written permission through the City Council to legally park on the berm. We do not want to park illegally. We are asking you to grant this request so it will not pose any unnecessary inconvenience for our neighbors.

Sincerely yours



Anthony Lockhart

Representative for New Hope Tabernacle

# FAX TRANSMITTAL

## Office of the City Clerk

Coleman A Young Municipal Center

Two Woodward Avenue, Suite 200

Detroit, Michigan 48226

Telephone: (313) 224-2070

Fax: (313) 224-2075

Thursday, December 04, 2008

No. of Pages 4

FROM: *Ms. Kim Newby, Junior Assistant City Council Committee Clerk*

SUBJECT: *Petition #3092, New Hope Tabernacle, requesting permit for berm parking  
in area surrounding 20221 Lahser.*

### FAX TO THE FOLLOWING DEPARTMENT(S):

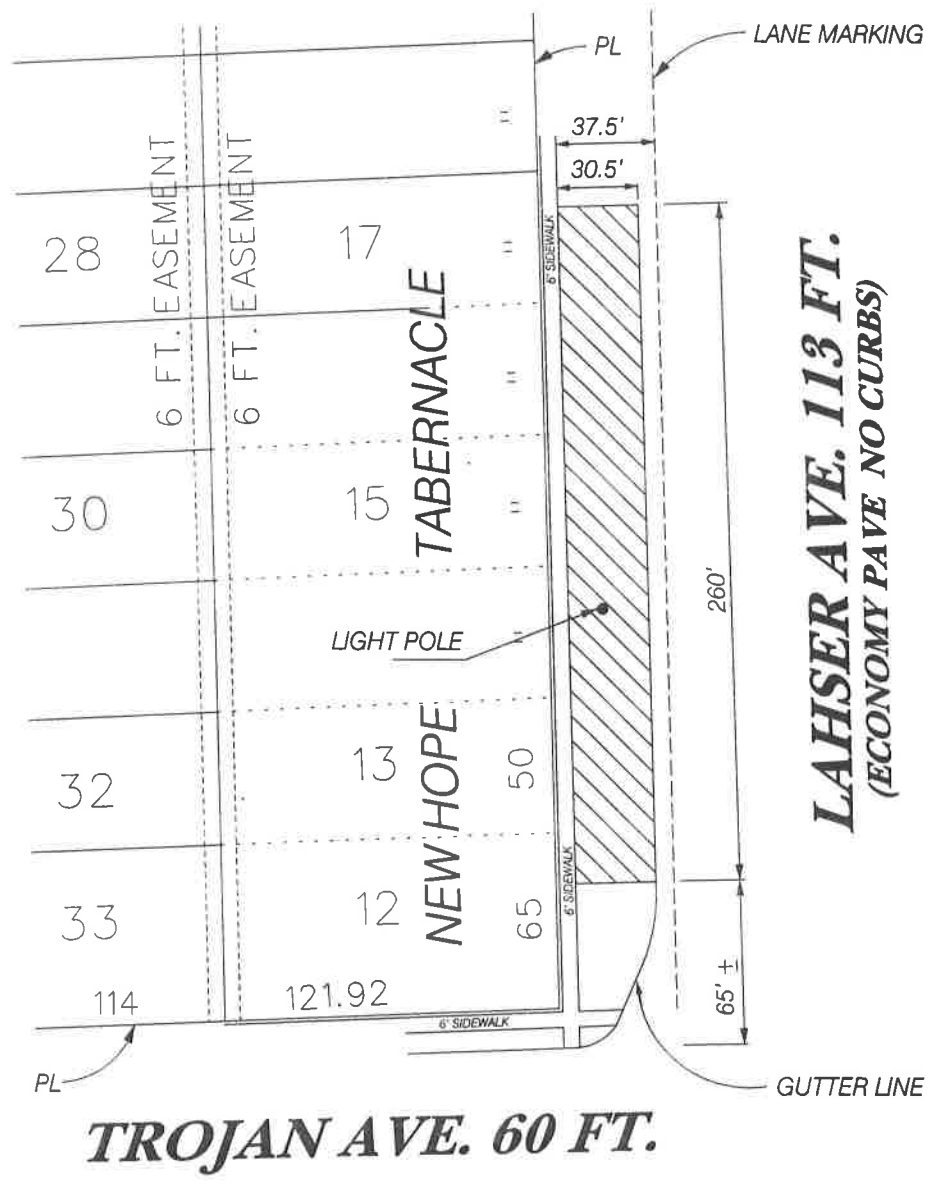
.. Mr. Alfred Jordan, Director

Public Works Department

(313) 224-1464

Attachment

**NEW HOPE TABERNACLE**  
**20221 LAHSER ROAD**  
**DETROIT, MICHIGAN 48219**  
**c/o ANTHONY LOCKHART**  
**313 535 7999**



**- REQUEST FOR BERM USE**

(FOR OFFICE USE ONLY)

**CARTO 123 A**

B					
A					
DESCRIPTION	DRWN	CHKD	APPD	DATE	
REVISIONS					
DRAWN BY	CHECKED				
DATE	APPROVED				
3/16/09					

**REQUEST PERMIT FOR BERM USE**  
**IN AREA SURROUNDING 20221 LAHSER**

<b>CITY OF DETROIT</b>	
CITY ENGINEERING DEPARTMENT	
SURVEY BUREAU	
JOB NO.	<b>01-01</b>
DRWG. NO.	<b>X 3092</b>