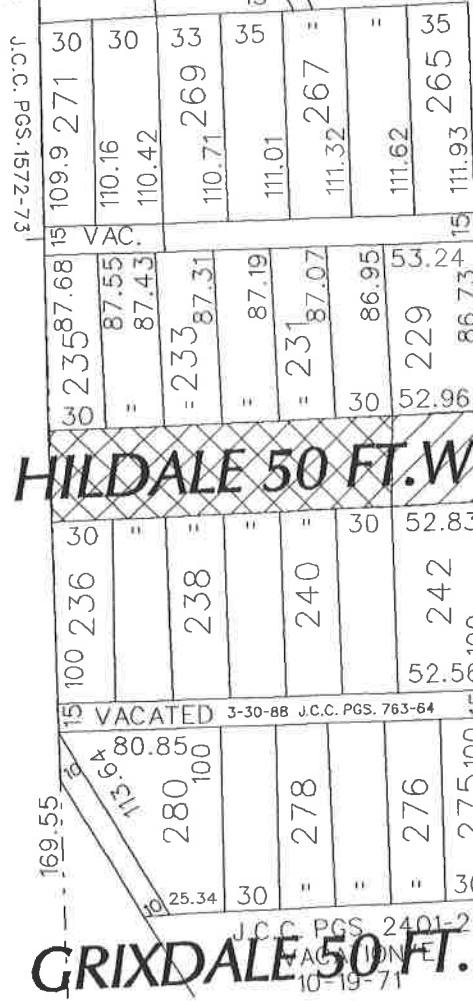


HAL ARCHITECTURAL
 19800 WOODINGHAM DRIVE
 DETROIT, MI 48221
 c/o HARRY LEWIS
 PHONE NO. 313-862-8234



REVISION !!!

GOLDENGATE 50 FT. WD.
JULY 10, 1985
 J.C.C. PGS. 572-5



OMIRA 50 FT. WD.

- REQUESTED CONVERSION TO EASEMENT
- REQUESTED OUTRIGHT VACATION

(FOR OFFICE USE ONLY)

CARTO 36B

B						REQUESTED OUTRIGHT VACATION AND CONVERSION TO EASEMENT A PORTION OF HILDALE ST. 50 FT. WD. WEST OF OMIRA AVE. AND BETWEEN GOLDENGATE AND GRIXDALE.	CITY OF DETROIT CITY ENGINEERING DEPARTMENT SURVEY BUREAU
A							JOB NO. 01-01
DESCRIPTION		DRWN	CHKD	APPD	DATE		DRWG. NO. x2665(2008).DGN
DRAWN BY		CHECKED					
DATE		APPROVED					
	NP						
	6-19-08						