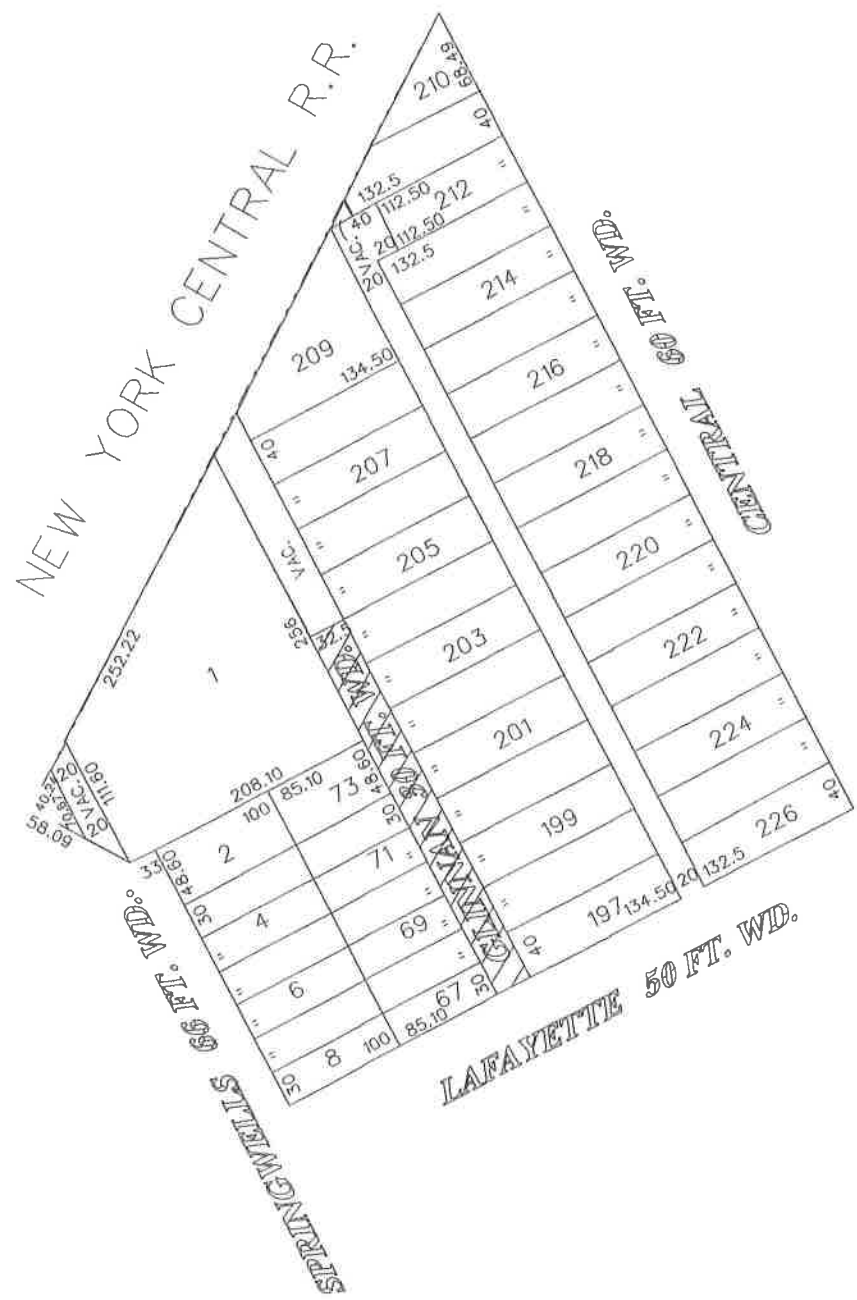


PETITION NO. 2353  
 SPRINGWELLS PLAZA, LLC  
 21711 W. TEN MI RD., SUITE 237  
 SOUTHFIELD, MI 48030  
 c/o JOSEPH A. SHALLAL  
 PHONE NO. 248-223-9830



 -OUTRIGHT VACATION

(FOR OFFICE USE ONLY)

CARTO 2 F

B						REQUESTED OUTRIGHT VACATION OF GLINNAN ST. 30 FT. WD. IN THE AREA OF SPRINGWELLS, LAFAYETTE AND CENTRAL.	CITY OF DETROIT CITY ENGINEERING DEPARTMENT SURVEY BUREAU JOB NO. 01-01 DRWG. NO. x2353.dgn		
A									
DESCRIPTION		DRWN	CHKD	APPD	DATE				
DRAWN BY		REVISIONS						CHECKED	
DATE		APPROVED							