

City of Detroit
OFFICE OF THE CITY CLERK

Janice M. Winfrey
City Clerk

Vivian A. Hudson
Deputy City Clerk

DEPARTMENTAL REFERENCE COMMUNICATION

Friday, July 20, 2007

To: *The Department or Commission Listed Below*

From: *Janice M. Winfrey, Detroit City Clerk*

The following petition is herewith referred to you for report and recommendation to the City Council.

In accordance with that body's directive, kindly return the same with your report in duplicate within four (4) weeks.

PLANNING AND DEVELOPMENT DEPARTMENT CITY PLANNING COMMISSION
WATER & SEWERAGE DEPARTMENT ENVIRONMENTAL AFFAIRS DEPARTMENT
DPW - CITY ENGINEERING DIVISION

1932 *MACTEC Engineering and Constructing, Inc. - Honeywell International, Inc., request for permanent access to existing encroachment to right-of-way (ROW) of Springwells Court for maintenance of the non-franchise utility crossing associated with a groundwater treatment facility.*

RECEIVED
AUG 01 2007

CEP
NOBZ
TBD

7



engineering and constructing a better tomorrow

1932

07 17 07

CITY CLERK

July 9, 2007

Office of the City Clerk
City of Detroit
200 Coleman A. Young Municipal Center
Two Woodward Avenue
Detroit, MI 48226

**Subject: Petition to Encroach on the Springwells Court Right-of-Way in Detroit, Michigan
MACTEC Project Number 3293-06-1266**

Honorable City Council,

MACTEC Engineering and Consulting, Inc. (MACTEC), on behalf of Honeywell International, Inc. (Honeywell), respectfully submits this letter as a petition for an existing encroachment to the right-of-way (ROW) of Springwells Court, in Detroit, Michigan (please see the enclosed legal description). The encroachment consists of a utility crossing associated with a groundwater treatment facility (GWTF) located at 1200 Zug Island Road. The utility crossing includes an 8-inch force main and two electrical conduits encased in concrete under Springwells Court (see Figures 1.1 and 1.2). Typically, franchise utilities are granted easements in the public ROW; however, Honeywell is requesting this encroachment to the ROW for permanent access for maintenance of the non-franchise utility crossing.

The treatment system is designed, through a series of collection trenches and recovery sumps, to prevent groundwater movement south of the Facility toward the Detroit River. Groundwater is collected and pumped through the force main to the treatment facility where it is treated and discharged to the Detroit Water and Sewerage Department under a Special Discharge Permit. The treatment system spans across several parcels adjacent to Springwells Court that Honeywell is finalizing negotiations for utility easements with the property owners, which include the Economic Development Corporation (EDC) and Lafarge International, Inc.

Honeywell completed installation of the treatment system at the Former Allied Chemical Corporation Facility (7819 West Jefferson Avenue), a brownfield redevelopment site along the Detroit River, as detailed in the Work Plan for the Revised Interim Response Measures (MACTEC, January 2004). Installation and operation of the GWTF was mandated by the Michigan Department of Environmental Quality (MDEQ) through an Administrative Order by Consent for the Facility. Honeywell has been working cooperatively with the City of Detroit, the State of Michigan, developers, and the new property owners to return the property to beneficial use as quickly as possible.



engineering and constructing a better tomorrow

We trust this letter provides the information necessary to consider this petition. Please feel free to contact Alan Greene at (313) 568-5386 if you have any questions or require additional information.

Sincerely,

A handwritten signature in black ink, appearing to read "Garret E. Bondy".

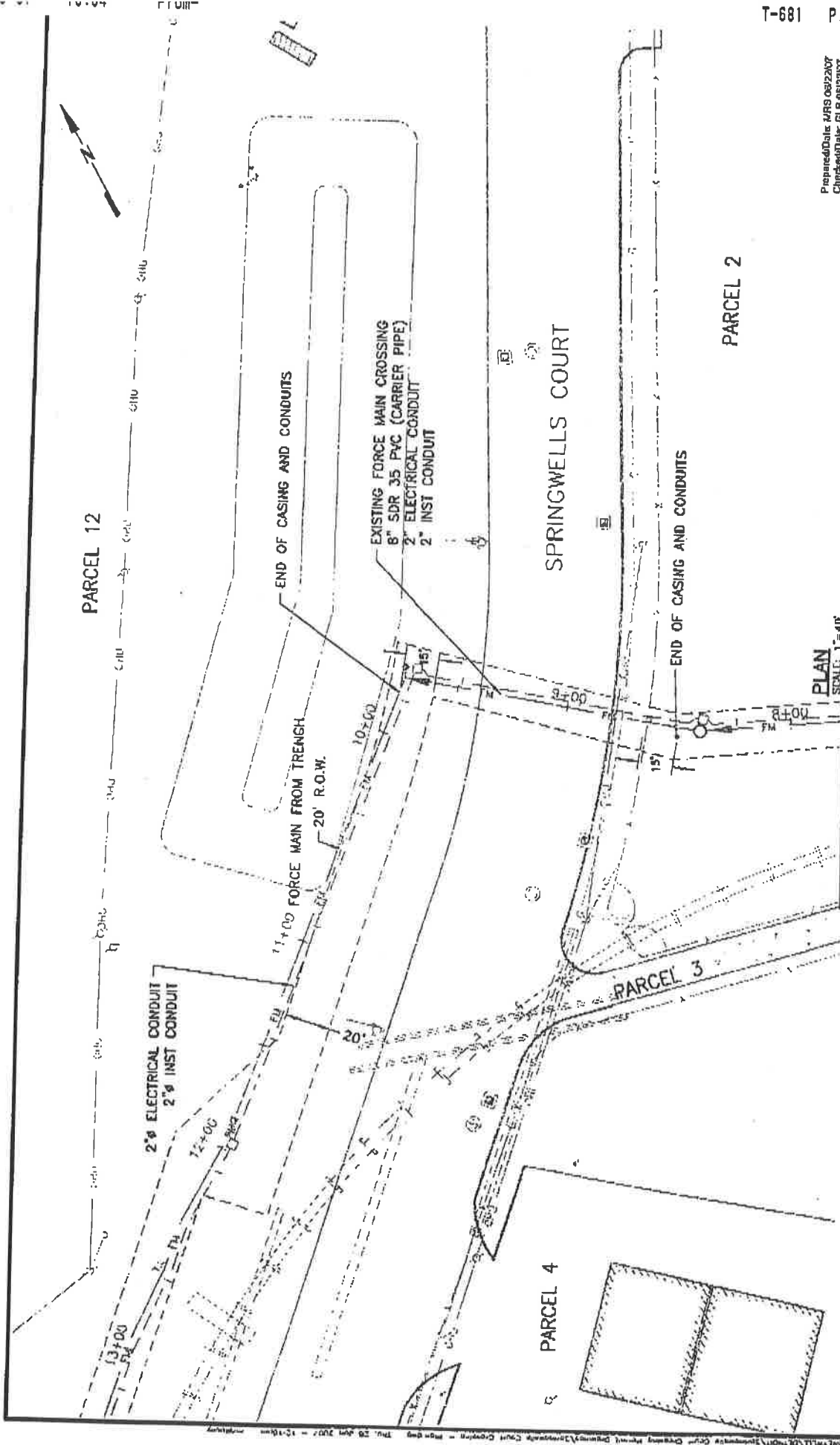
Garret E. Bondy, P.E.
Senior Principal Project Manager
MACTEC Engineering and Consulting, Inc.

A handwritten signature in black ink, appearing to read "Joseph W. Caryl".

Joseph W. Caryl, A.C.
Senior Construction Specialist

cc: C. Geadelmann, Honeywell International, Inc.
A. Greene, Dykema Gossett
W. Tamminga, Detroit Economic Growth Corporation
P. Thornton, Michigan Department of Environmental Quality
R. Talbot, MACTEC Engineering and Consulting, Inc.
J. Caryl, MACTEC Engineering and Consulting, Inc.

Enclosures



Prepared Date: MRS 05/22/07
 Checked Date: CLR 05/22/07

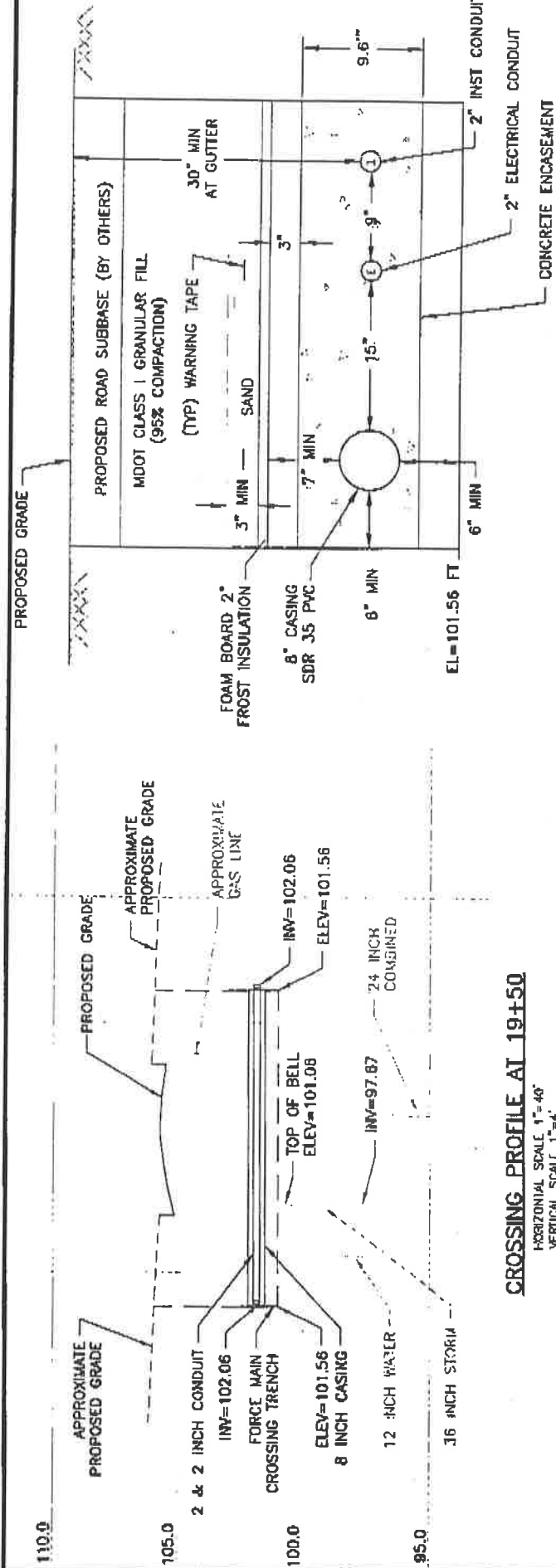
SPRINGWELLS COURT CROSSING
 PLAN
 Project: 3293-06-1266
 Figure 1.1



HONEYWELL
 DETROIT COKE CORPORATION
 DETROIT, MICHIGAN

PLAN
 SCALE: 1"=40'

C:\projects\HONEYWELL\DETROIT COKE\SPRINGWELLS COURT CROSSING\SPRINGWELLS COURT CROSSING.dwg Thu, 20 Jun 2007 12:13:00 PM



CROSSING PROFILE AT 19+50

HORIZONTAL SCALE 1"=40'
 VERTICAL SCALE 1"=4'

TRENCH DETAIL
 NOT TO SCALE

Prepared/Drawn: MRS 08/22/07
 Checked/Date: GLR 08/22/07

SPRINGWELLS COURT CROSSING
 CROSS SECTIONS
 Project 3283-06-1286
 Figure 1.2

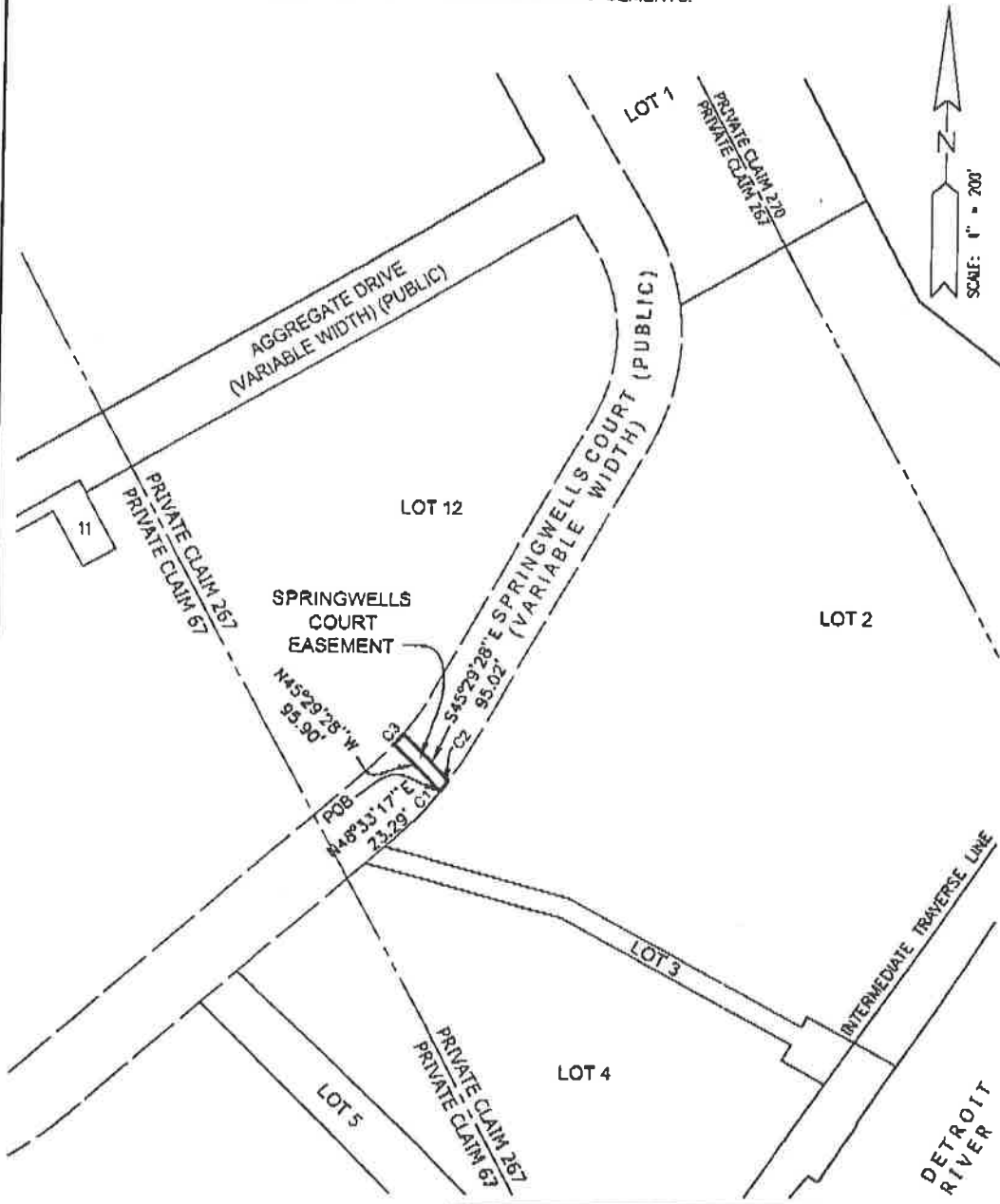


HONEYWELL
 DETROIT COKE CORPORATION
 DETROIT, MICHIGAN

EASEMENT SKETCH

PROPOSED EASEMENT ACROSS SPRINGWELLS COURT

SEE SHEET 2 OF 2 FOR COMPLETE LEGAL DESCRIPTIONS OF EASEMENTS.



PREPARED UNDER THE SUPERVISION OF:

JOSHUA R. DAVIDSON, PS #46659
WADE TRIM, INC.

CURVE TABLE					
CURVE	LENGTH	RADIUS	DELTA	DIRECTION	CHORD
C1	90.39'	550.00'	9°24'57"	N43°50'48"E	90.28'
C2	20.14'	550.00'	2°05'51"	N38°05'24"E	20.13'
C3	20.06'	451.08'	2°32'51"	N40°35'30"E	20.05'

DATE: 02 JULY 2007

FOR:

MACTEC Engineering
and Consulting, Inc.

WADE TRIM
241 East State Street
Traverse City, MI 49684
231.947.7400/800.968.8860
FAX: 231.946.1000
www.wadetrtrim.com Building relationships on a foundation of excellence

SEC. - - - - -
BOOK #: - PAGE #: -
DR BY: JS COMP BY: -
CK BY: JRD SRVY BY: -
JOB #: ESE 4034-06C
SHEET: 1 OF 2

© Wade Trim Group, Inc.

EASEMENT SKETCH

SPRINGWELLS COURT CROSSING PROPOSED EASEMENT:


THAT PART OF THE CITY OF DETROIT, WAYNE COUNTY, MICHIGAN, BEING A PART OF SPRINGWELLS COURT IN THE "AMENDED PLAT OF THE VACATED PORTIONS OF LOTS 13 TO 19 INCLUSIVE, OF WILLIAM DWIGHTS SUBDIVISION OF THE FRONTS OF PRIVATE CLAIMS 267, 270 AND 268 AND THE VACATED PORTIONS OF LOTS 95 TO 101, INCLUSIVE, OF CRAWFORD'S FORT TRACT, BEING PRIVATE CLAIM 270, THE EAST PART OF PRIVATE CLAIM 267, AND THE WEST PART OF PRIVATE CLAIM NO. 268, AND PARTS OF PRIVATE CLAIMS 67 AND 267" AS RECORDED IN LIBER 121 OF PLATS, PAGES 62-69 WAYNE COUNTY RECORDS, DESCRIBED AS COMMENCING AT THE CORNER COMMON TO LOTS 2 AND 3 OF SAID AMENDED PLAT ON THE SOUTHERLY LINE OF SPRINGWELLS COURT; THENCE NORTH 48°33'17" EAST ALONG SAID SOUTHERLY LINE OF SPRINGWELLS COURT 23.29 FEET; THENCE CONTINUING ALONG SAID SOUTHERLY LINE OF SPRINGWELLS COURT, 90.39 FEET ALONG THE ARC OF A CURVE TO THE LEFT, HAVING A RADIUS OF 550.00 FEET, A DELTA OF 9°24'57", AND A LONG CHORD BEARING NORTH 43°50'48" EAST 90.28 FEET TO THE POINT OF BEGINNING; THENCE NORTH 45°28'28" WEST 95.90 FEET TO THE NORTHERLY LINE OF SPRINGWELLS COURT; THENCE ALONG SAID NORTHERLY LINE OF SPRINGWELLS COURT 20.06 FEET ALONG THE ARC OF A CURVE TO THE LEFT, HAVING A RADIUS OF 451.08 FEET, A DELTA OF 02°32'51", AND A LONG CHORD BEARING NORTH 40°35'30" EAST 20.05 FEET; THENCE SOUTH 45°29'28" EAST 95.02 FEET TO SAID SOUTHERLY LINE OF SPRINGWELLS COURT; THENCE ALONG SAID SOUTHERLY LINE OF SPRINGWELLS COURT 20.14 FEET ALONG THE ARC OF A CURVE TO THE RIGHT, HAVING A RADIUS OF 550.00 FEET, A DELTA OF 02°05'51", AND A LONG CHORD BEARING SOUTH 38°05'24" WEST 20.13 FEET TO THE POINT OF BEGINNING. CONTAINING 0.04 ACRES, MORE OR LESS.

BEARINGS BASED ON THE RECORDED PLAT "AMENDED PLAT OF THE VACATED PORTIONS OF LOTS 13 TO 19 INCLUSIVE, OF WILLIAM DWIGHTS SUBDIVISION OF THE FRONTS OF PRIVATE CLAIMS OF 267, 270 AND 268" AND THE VACATED PORTIONS OF LOTS 95 TO 101, INCLUSIVE, OF CRAWFORD'S FORT TRACT, BEING PRIVATE CLAIM 270, THE EAST PART OF PRIVATE CLAIM 267, AND THE WEST PART OF PRIVATE CLAIM NO. 268, AND PARTS OF PRIVATE CLAIMS 67 AND 267" AS RECORDED IN LIBER 121 OF PLATS ON PAGES 62-69 WAYNE COUNTY RECORDS.

DATE: 02 JULY 2007

FOR:

MACTEC Engineering
and Consulting, Inc.



241 East State Street
Traverse City, MI 49684
231.947.7400/800.968.6860
FAX: 231.946.1000
www.wadetrिम.com Building relationships on a foundation of excellence

SEC.	-	-	-
BOOK #:	-	PAGE #:	-
DR BY:	J5	COMP BY:	-
CK BY:	JRD	SRVY BY:	-
JOB #:	ESE 4034-06C		
SHEET:	2	OF	2

© Wade Trim Group, Inc.