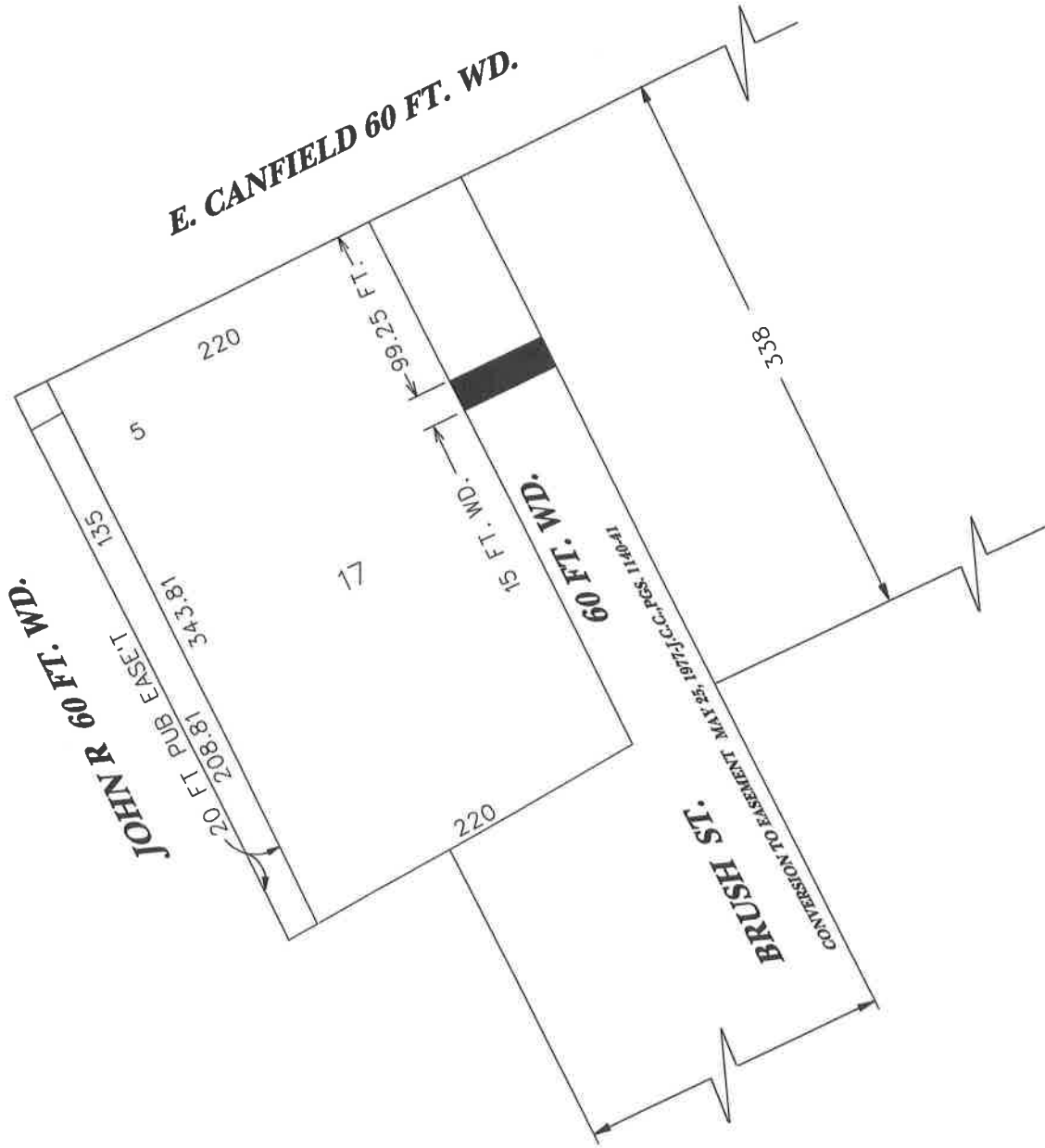


PETITION NO. 1889
WAYNE STATE UNIVERSITY
5700 CASS AVE., SUITE 4900
DETROIT, MI 48202
c/o JOHN L. DAVIS
313-577-5580, FAX 313-577-2338



AREA OF ENCROACHMENT

CARTO 30 F

B					
A					
DESCRIPTION	DRWN	CHKD	APPD	DATE	
REVISIONS					
DRAWN BY	CHECKED				
DATE	APPROVED				
ahb					
7/19/07					

REQUEST TO ENCROACH INTO BRUSH ST. 60 FT. WD. SOUTH OF E. CANFIELD 60 FT. WD. WITH A PEDESTRAIN BRIDGE 15 FT. WD. MORE THAN 16 FT. ABOVE GREDS.

CITY OF DETROIT	
CITY ENGINEERING DEPARTMENT	
SURVEY BUREAU	
JOB NO.	01-01
DRWG. NO.	x1889.dgn