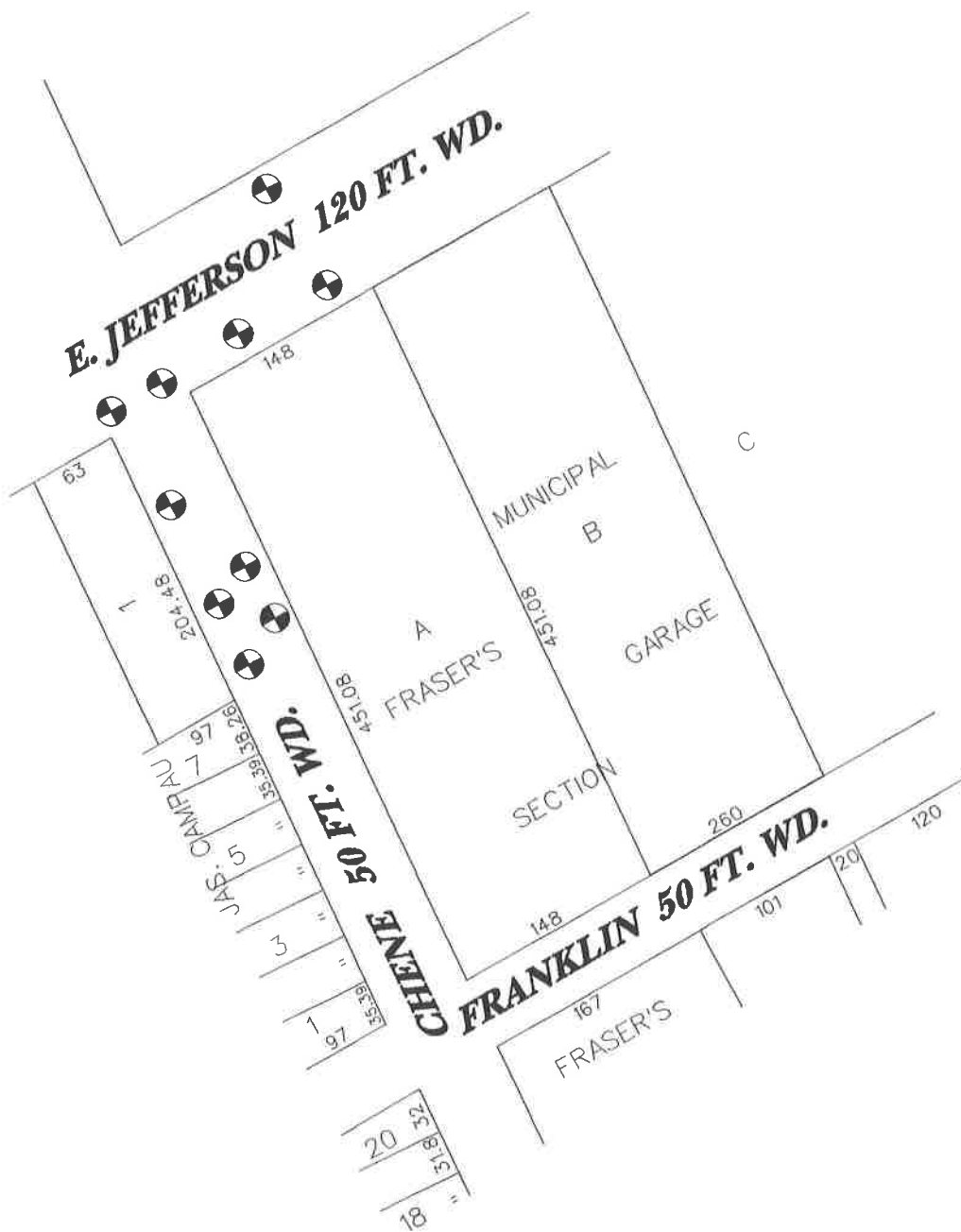


PETITION NO. 1674
GROUNDWATER & ENVIRONMENTAL SERV., INC.
10381 CITATION DR., SUITE 500
BRIGHTON, MI 48116
c/o ANNE HERRERA
PHONE NO. 810-227-0002, EXT. 120



 **-AREA OF ENCROACHMENT**
 (WITH MONITORING WELLS)

(FOR OFFICE USE ONLY)

CARTO 38E

B					
A					
DESCRIPTION		DRWN	CHKD	APPD	DATE
REVISIONS					
DRAWN BY		CHECKED			
DATE		APPROVED			
6/26/07					

REQUEST TO ENCROACH INTO
E. JEFFERSON AND CHENE WITH
NINE MONITORING WELLS.

CITY OF DETROIT
CITY ENGINEERING DEPARTMENT
SURVEY BUREAU

JOB NO. 01-01

DRWG. NO. x1674.dgn