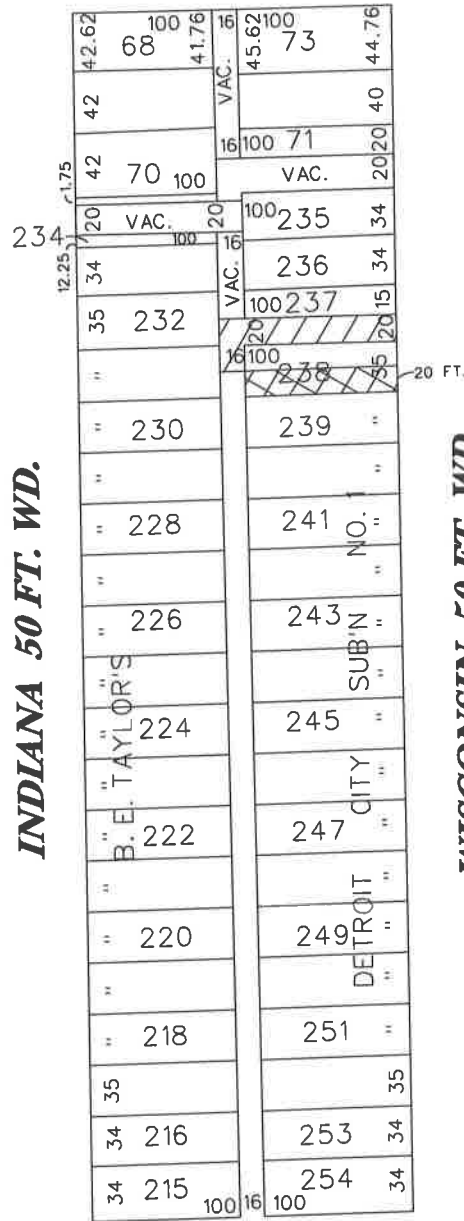


PETITION NO. 1469
DICKERSON WRIGHT, PLLC
38525 WOODWARD AVE., SUITE 2000
BLOOMFIELD HILLS, MI 48304-5092
c/o STEPHEN M. GUERRA
PHONE NO. 248-433-7200



SCHOOLCRAFT 60 FT. WD.



INDIANA 50 FT. WD.

WISCONSIN 50 FT. WD.

W. DAVISON 120 FT. WD.



- EASEMENT FOR VEHICULAR / PEDESTRIAN TRAFFIC.



- REQUESTED CONVERSION TO EASEMENT

(FOR OFFICE USE ONLY)

CARTO 8B

B					
A					
DESCRIPTION		DRWN	CHKD	APPD	DATE
REVISIONS					
DRAWN BY	CHECKED				
DATE	APPROVED				

**REQUESTED CONVERSION TO EASEMENT
 THE EAST/WEST AND A PORTION OF THE
 NORTH/SOUTH PUBLIC ALLEY. ALSO
 GRANTING AN EASEMENT FOR VEHICULAR
 / PEDESTRIAN TRAFFIC IN THE AREA OF
 SCHOOLCRAFT, WISCONSIN, INDIANA AND
 W.B. DAVISON FWY.**

CITY OF DETROIT	
CITY ENGINEERING DEPARTMENT	
SURVEY BUREAU	
JOB NO.	01-01
DRWG. NO.	x1469.dgn