

City of Detroit
OFFICE OF THE CITY CLERK

Janice M. Winfrey
City Clerk

Vivian A. Hudson
Deputy City Clerk

DEPARTMENTAL REFERENCE COMMUNICATION

Wednesday, September 13, 2006

To: The Department or Commission Listed Below

From: Janice M. Winfrey, Detroit City Clerk

The following petition is herewith referred to you for report and recommendation to the City Council.

In accordance with that body's directive, kindly return the same with your report in duplicate within four (4) weeks.

DPW - CITY ENGINEERING DIVISION

943 *Southwest Detroit Business Association,, request installation of bike rack at Odd Fellows Building, located at 8701 W. Vernor, at Lawndale.*

3E

RECEIVED
CITY ENGINEERING DIV.-DPW

SEP 28 2006

By _____

3E
LVM135
2B

Southwest Detroit Business Association

0943

**City Clerk
Ms. Janice M. Winfrey
200 Coleman A. Young Municipal Center
Two Woodward Ave.
Detroit, MI 48226**

Dear Ms. Winfrey

Enclosed is a petition to the City Council to encroach on a City sidewalk for the purpose of installing a bike rack. Please submit it to the City Council at the next available meeting.

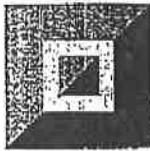
You may call me at (734) 552 2500 if you have any questions. Thank you in advance for your help.

Sincerely,



Larry W. Ladomer

DETROIT
CITY CLERK
13 SEP -7 A 9 17



SOUTHWEST DETROIT
BUSINESS ASSOCIATION

0943

July 31, 2006

Dear Detroit City Council Members,

This letter is a petition to encroach on a City sidewalk for the purpose of installing a bike rack. Our building, better known as the Odd Fellows building, is located at 8701 W. Vernor, at the corner of Lawndale, in Southwest Detroit.

The bike rack we wish to install will hold about eight bikes. (See detail sheet of proposed bike rack). We would like to install it on the Lawndale side of our building, as the sidewalk at this point is 15 foot wide. The sidewalk was recently replaced, to City specifications, as part of our renovation project. (See attach site plan)

The Odd Fellows building was purchased from the City by the Southwest Detroit Business Association. It has been completely renovated with over \$5 million expended, to help create new jobs for the City and provide a Community Arts and Cultural Center for the community.

We have been working closely with the City, who is administering an EDI/108 grant and loan for the project. We have also received Governor Granthom's "Cool Cities" catalyst grant for the building.

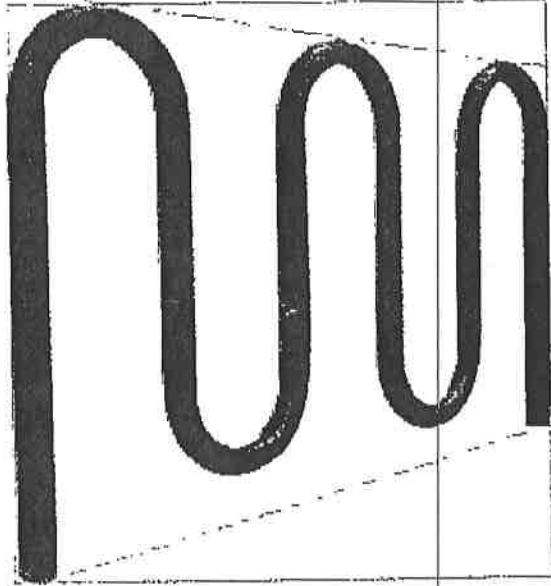
City inspections on the building are being finalized and as soon as they are completed we hope to place our first tenant in by mid August. If there is any way we can obtain a timely and favorable decision on our request, we would greatly appreciate it. Thank you in advance for your consideration of this petition.

Sincerely,

Larry W. Ladomer
For Southwest Detroit Business Association &
Southwest Detroit Land for Redevelopment, LLC

Cc: Kathy Wendler, President, Southwest Detroit Business Association

ROLLING RACK



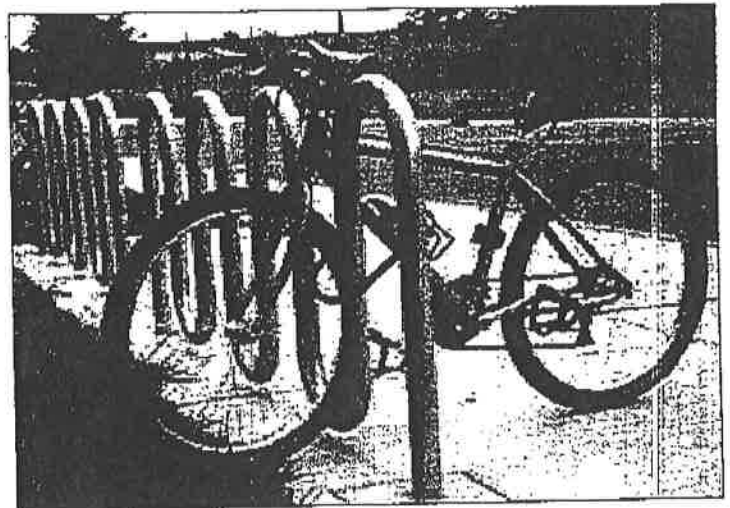
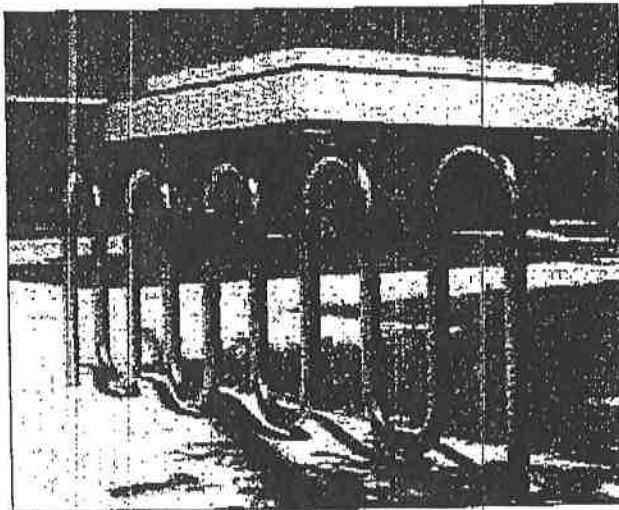
The Rolling Rack is an attractive single or double sided bicycle rack

The graceful design and high security of the Rolling Rack has made this type of bike rack a standard for many schools and communities. The Rolling Rack can be used as a single-sided or double-sided bike rack.

The Rolling Rack can be ordered for in-ground or foot mounted installation. This rack uses thick pipe construction and allows for one of the wheels and frame to be secured using a u-style bike lock.

FEATURES

- Attractive design
- Accomodates double sided parking
- In ground or surface mounted
- Various sizes available
- Easy intallation



DERO
BIKE RACK COMPANY

2657 32ND AVENUE S
MINNEAPOLIS, MN 55406

DERO@DERO.COM WWW.DERO.COM

TEL 888 337 6729
FAX 612 331 2711

Rolling Rack - Specifications and Space Use

Product Name

Dero Rolling Rack
As manufactured by Dero Bike Racks

Bikes Parked per Unit:

- RR2H: 5 Bikes
- RR3H: 7 Bikes
- RR4H: 9 Bikes
- RR5H: 11 Bikes

Materials

2.375" OD Schedule 40 Steel Pipe

Finishes

An after fabrication hot dipped galvanized finish is standard. 250TGIC powder coat colors and a stainless steel option are also available.

Our powder coat finish assures a high level of adhesion and durability by following these steps:

1. Sandblast
2. Iron phosphate pretreatment
3. Epoxy primer electrostatically applied
4. Final thick TGIC polyester powder coat

Stainless Steel: 304 grade stainless steel material finished in either a high polished shine or a satin finish.

A rubbery PVC Dip is also available

Installation Method

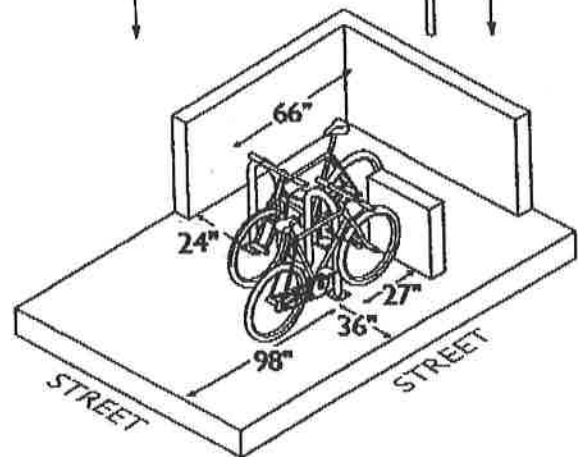
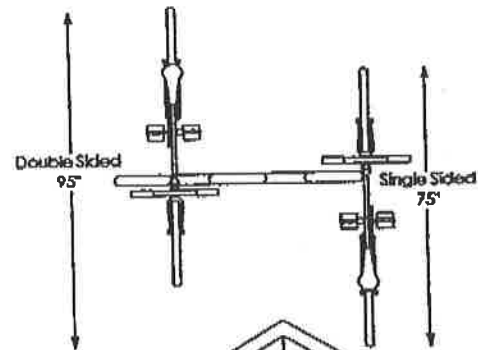
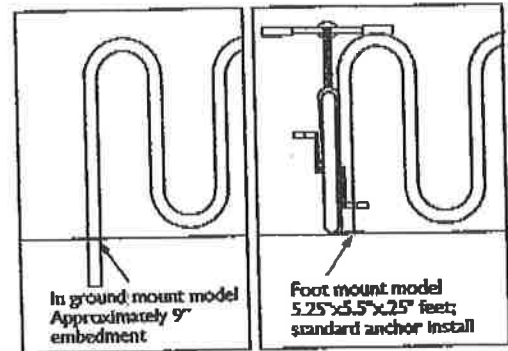
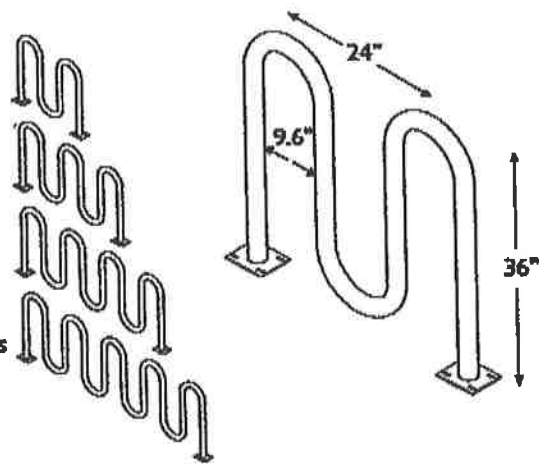
- In ground mount is embedded into concrete base. Specify in ground mount for this option.
- Foot mount has two 5.5"x5.25" foot plates with 4 anchors per foot. Specify foot mount for this option. A freestanding option is also available.

RR2H - 38"
Parks 5 Bikes

RR3H - 63"
Parks 7 Bikes

RR4H - 87"
Parks 9 Bikes

RR5H - 111"
Parks 11 Bikes



SETBACKS

Wall Setback: A minimum of 27" should be left between the wall and the long side of the rack. 36" is the recommended setback.

Street Setback: For racks set parallel to the street, a 96" setback is recommended. For racks installed perpendicular to the street, 24" is the minimum setback. 36" is recommended.

DERO
BIKE RACK COMPANY

2657 32ND AVENUE S
MINNEAPOLIS, MN 55406

DERO@DERO.COM WWW.DERO.COM

TEL 888 337 6729

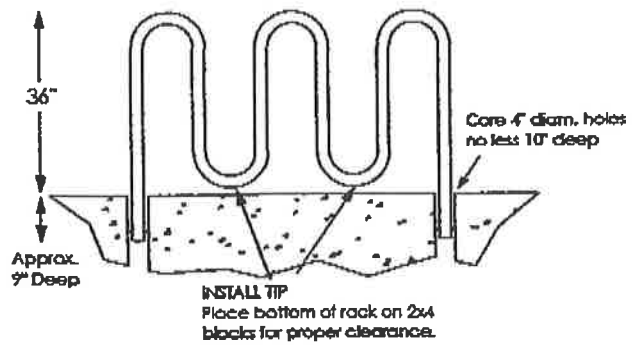
FAX 612 331 2731

ROLLING RACK - In Ground Mount Installation Specifications and Instructions

IN GROUND MOUNT

Installing into Existing Sidewalk

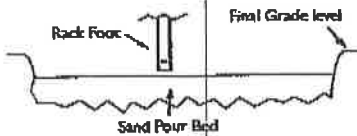
Core holes no less than 3" diameter (4" recommended) and no less than 6" deep into sidewalk. Fill holes with non-shrink epoxy grout. Place Rolling Rack into hole filled with epoxy. Make sure the rack is level and held in place until the grout has set.



Installing Into a New Sidewalk:

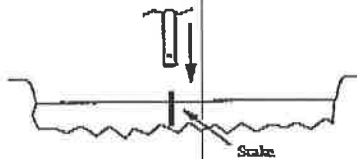
Step 1

Use rack to measure exact location in pour bed.



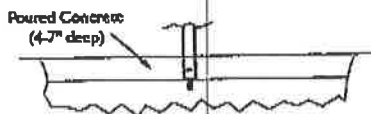
Step 2

Pound stake into pour bed where end of rack will sit. Slide rack end onto stake. You may need to dig the end of rack into the sand to make sure rack sits at least 3/5" above final grade level. The stake keeps the rack straight while the concrete is being poured.



Step 3

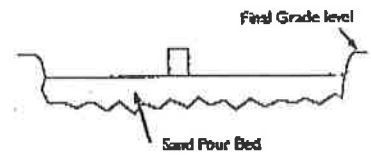
Make sure rack is level and true, pour concrete around rack. Make sure rack is not touched until concrete has completely set.



Sleeve Method:

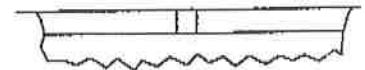
Step 1

Place corrosion resistant sleeve (min. 3" inside diameter) in sand pour bed in exact location where the rack will be installed. Make sure top of sleeve is at same level as desired finished concrete surface. Fill sleeve with sand to keep it in place and prevent it from filling with concrete.



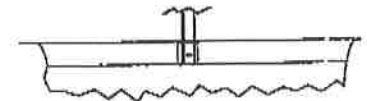
Step 2

Pour concrete and allow to cure

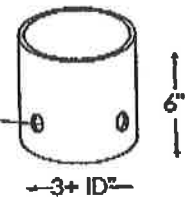


Step 3

After appropriate cure time, dig out sand from sleeves and pour in non-shrink epoxy grout. Insert racks and make sure they are level and at the appropriate height. Allow grout to set.



Note: Sleeve should have profile to keep it from coming loose from hardened concrete.

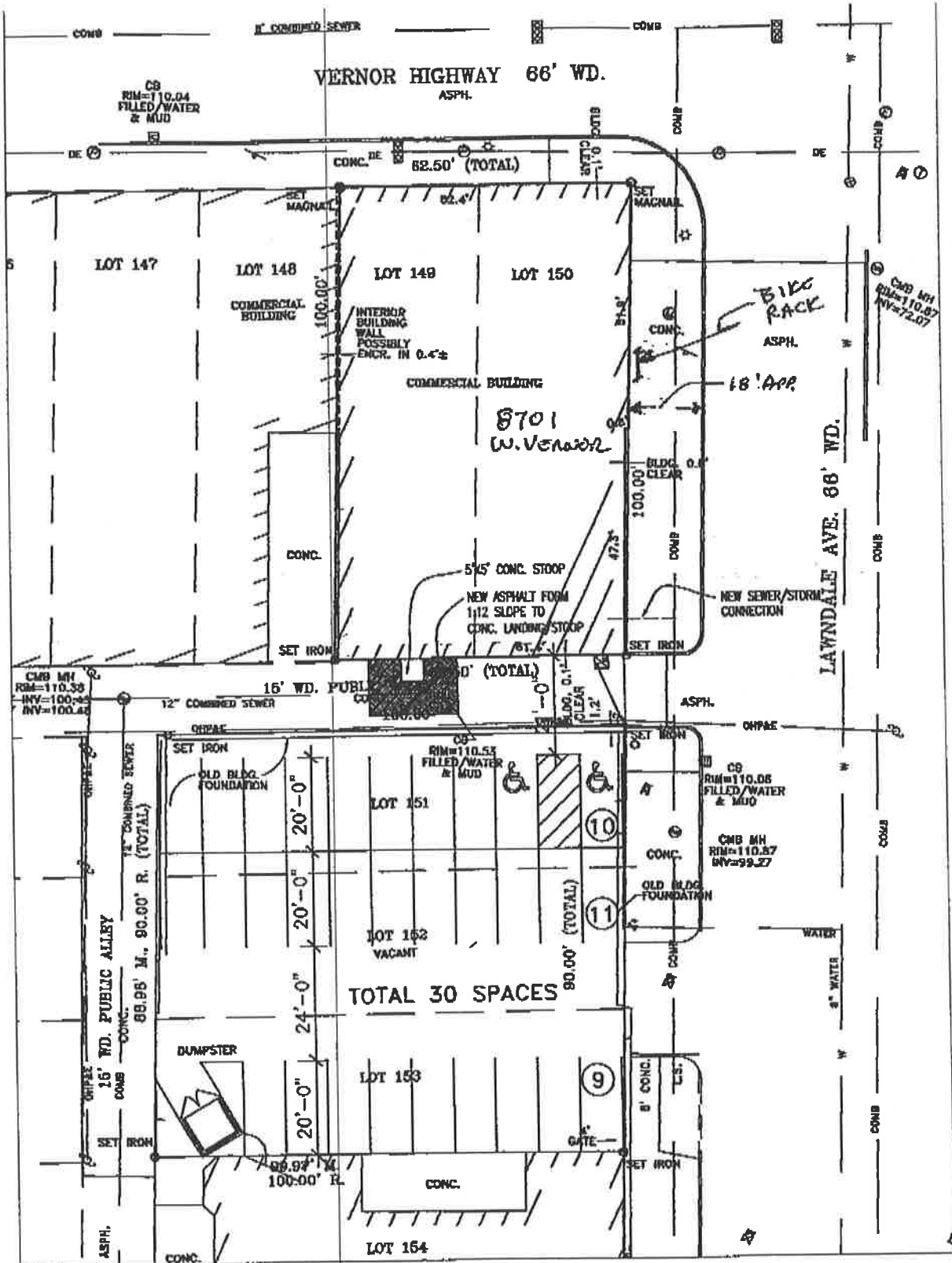


DERO
BIKE RACK COMPANY

2657 32ND AVENUE S
MINNEAPOLIS, MN 55406

DERO@DERO.COM WWW.DERO.COM

TEL 888 337 6729
FAX 612 331 2731



SITE PLAN
 SCALE - 1"=20'
 FILE NAME

ODD FELLOWS BUILDING
 8701 West Vernor, Detroit, Michigan 48209

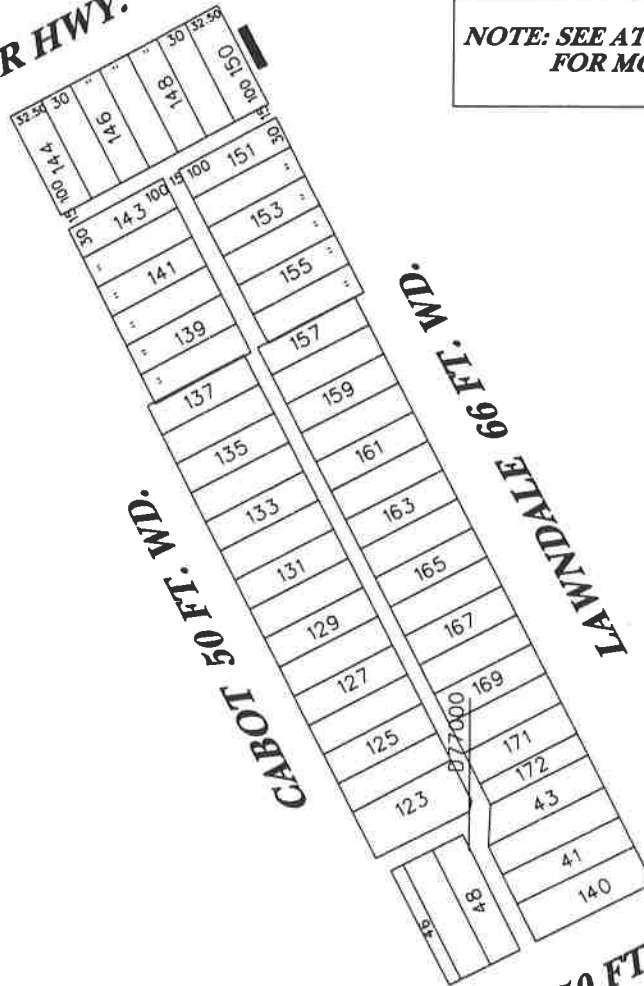
ELISABETH KNIBBE ARCHITECTS

PETITION #943
SOUTHWEST DETROIT BUSINESS ASSOC.
7752 W. VERNOR
DETROIT, MI 48209-1516
c/o LARRY W. LADOMER
PHONE #313-842-0986



W. VERNOR HWY. 66 FT. WD.

NOTE: SEE ATTACHED DRAWING FOR MORE DETAILS.



CABOT 50 FT. WD.

MANDALE 50 FT. WD.

■ -AREA OF ENCROACHMENT (BIKE RACK)

(FOR OFFICE USE ONLY)

CARTO 3e

B					
A					
DESCRIPTION	DRWN	CHKD	APPD	DATE	
REVISIONS					
DRAWN BY	CHECKED				
DATE	APPROVED				
	10/19/06				

REQUESTED ENCROACHMENT OF BIKE RACK INTO LAWDALE 60 FT. WD. BTWN. W. VERNOR HWY., MANDALE AND CABOT.

CITY OF DETROIT
CITY ENGINEERING DEPARTMENT
SURVEY BUREAU

JOB NO. 01-01

DRWG. NO. x943.dgn