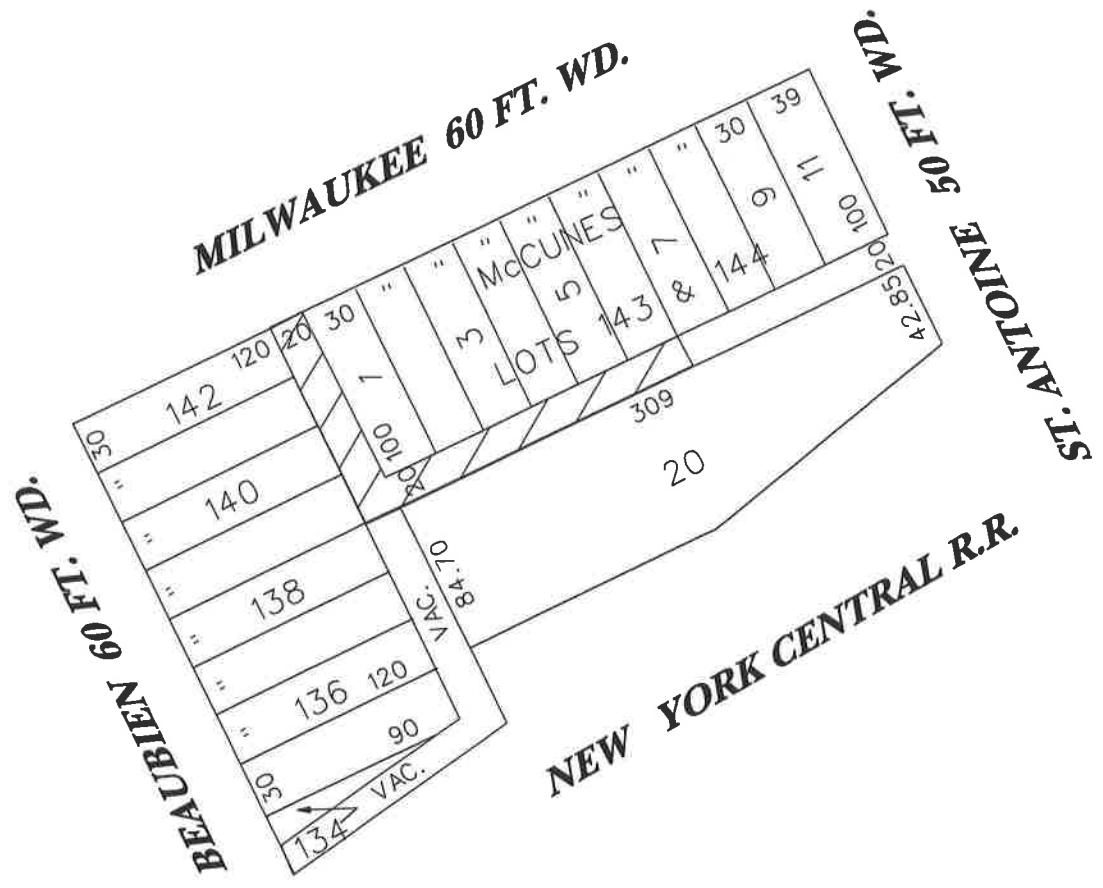


PETITION #922&1040
DTE ENERGY COMPANY
2000 2ND AVE.
DTROIT, MI 48226-1279
c/o JOSEPH CAZENO
PHONE #313-235-4000



 - **TEMPORARY CLOSURE**

(FOR OFFICE USE ONLY)

CARTO 31F

B					
A					
DESCRIPTION		DRWN	CHKD	APPD	DATE
REVISIONS					
DRAWN BY		CHECKED			
DATE		APPROVED			
9/21/06					

REQUESTED TO TEMPORARY CLOSE THE ALLEYS IN THE AREA OF MILWAUKEE, BEAUBIEN, ST. ANTOINE AND NEW YORK CENTRAL R.R.

CITY OF DETROIT
CITY ENGINEERING DEPARTMENT
SURVEY BUREAU

JOB NO. **01-01**

DRWG. NO. **x922&1040.dgn**