

**City of Detroit**  
OFFICE OF THE CITY CLERK

*WGT/NP*

Janice M. Winfrey  
City Clerk

Vivian A. Hudson  
Deputy City Clerk

**DEPARTMENTAL REFERENCE COMMUNICATION**

August 10, 2006

To: The Department or Commission Listed Below

From: Janice M. Winfrey  
Detroit City Clerk

The following petition is herewith referred to you for report and recommendation to the City Council

In accordance with that body's directive, kindly return the same with your report in duplicate within four (4) weeks.

CITY PLANNING COMMISSION/PLANNING AND DEVELOPMENT/  
PUBLIC LIGHTING/WATER AND SEWERAGE DEPARTMENTS/  
PUBLIC WORKS - CITY ENGINEERING DIVISION/

0847 Detroit Housing Commission (DHC), request permanent vacation of streets and existing rights-of-ways and dedication of proposed streets for the Gardenvue Estates Development Project (formerly Herman Gardens) to the City of Detroit.

**RECEIVED**  
CITY ENGINEERING DIV.-DPW

AUG 15 2006

By \_\_\_\_\_

*99B  
LYM 264*



08/07

1231 SELDEN STREET  
SUITE 108  
DETROIT, MI 48201  
Fax: (313) 833-3314

Telephone: (313) 833-1018

August 8, 2006

Honorable City Council  
City of Detroit  
200 Coleman A. Young Municipal Center  
Detroit, MI 48226

RE: Request to Vacate Streets and Road Right of Way  
Gardenview Estates (formerly Herman Gardens), Detroit, MI

Honorable City Council Members:

The Detroit Housing Commission (DHC) requests permission to vacate streets at the Gardenview Estates development (formerly Herman Gardens). As you are aware, the Detroit Housing Commission and the City of Detroit will break ground Fall 2006 on what will become one of the nation's most attractive mixed-income communities, Gardenview Estates, providing over 900 new housing units and a state-of-the art youth education center.

Prior to breaking ground for the new development, it is imperative that the original streets and existing road right of way of the former site of Herman Gardens be vacated, and the proposed streets for the Gardenview Estates development project be dedicated as new city streets by this Honorable City Council.

Therefore DHC respectfully requests City Council's approval to vacate the existing streets shown on the attached Site Plan "A" and requests the streets shown on the attached SKETCH OF RIGHT OF WAY drawings, sheets 1-10, dated 1/15/05, be dedicated as new city streets. Permission is also requested to construct City water mains, separate sanitary sewer and storm system and future utilities within the public right of way of the new dedicated streets, as shown on the attached drawings titled, SANITARY SEWER EASEMENT, sheets 1-5, dated 5/01/06, and WATER MAIN EASEMENT, sheets 1-9, dated 5/01/06.

Should you require additional information, please contact Monica R. Smith, Project Coordinator or me at 313.833.1018.

Sincerely,

Robert K. Hunt  
Director of Development

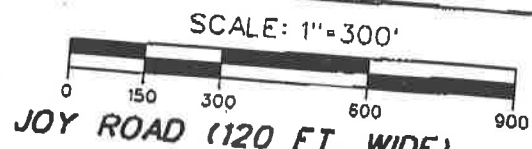
cc:

Lindsey S. Reames  
Monica R. Smith  
J. Dan Jones

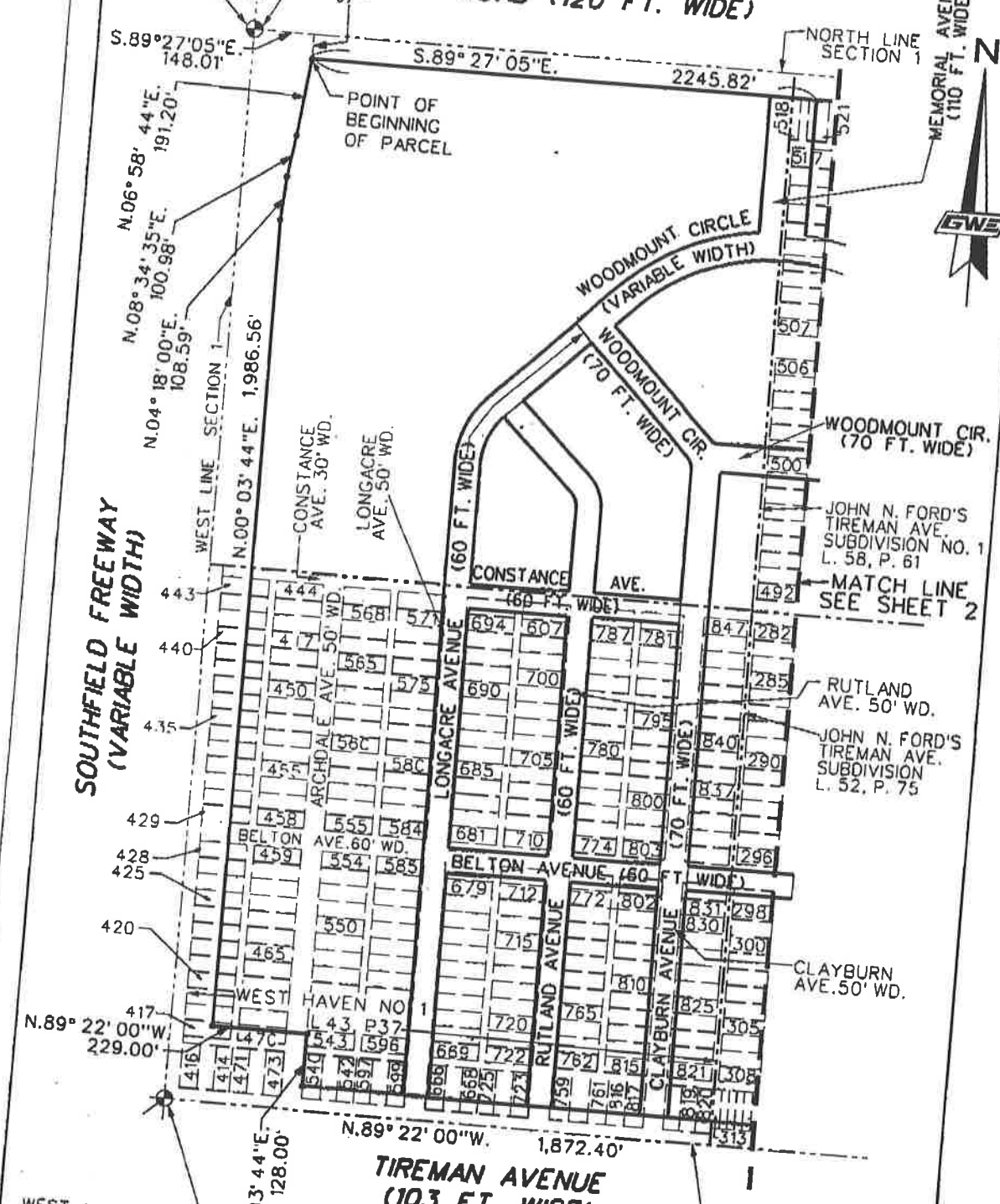
Attachments:

Handwritten notes: JR, Final, Fresh, RJ

City of Detroit stamp



NORTHWEST CORNER SECTION 1, T.-2-S., R.-10-E.  
POINT OF COMMENCEMENT



**SANITARY SEWER EASEMENT**  
 A PART OF THE NORTHWEST 1/4 OF SECTION 1,  
 T-2-S., R-10-E, CITY OF DETROIT,  
 WAYNE COUNTY, MICHIGAN

Copyright © 2006 Giffels-Webster Engineers, Inc.  
 All reproductions without written consent of Giffels-Webster Engineers, Inc.

**GWE**  
 Giffels-Webster Engineers, Inc.  
 ENGINEERS LAND SURVEYORS PLANNERS LANDSCAPE ARCHITECTS  
 2871 BOND STREET, ROCHESTER HILLS, MI. 48309  
 (248) 852-3100

DATE: 5-1-06	CHECKED BY: R.D.K.	DATE:	SCALE: 1"=300'
DRAWN: M.I.			SHEET: 1 OF 5
DESIGN:			
SECTION: 1	T-2-S., R-10-E.		JOB No: 18016.200

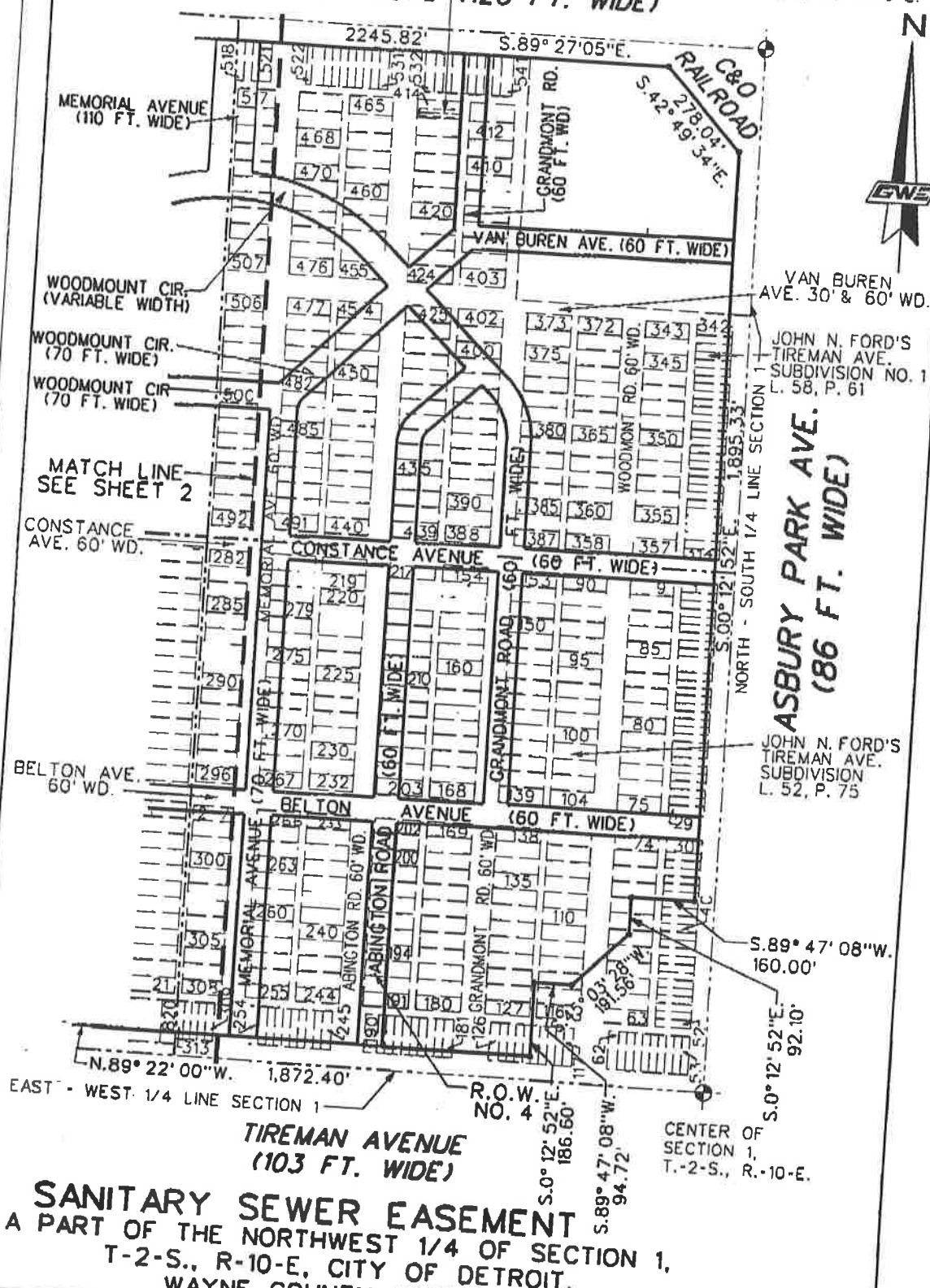
SCALE: 1"=300'



C/L 20' PRIVATE EASEMENT FOR SANITARY SEWER (SEE EASEMENT DETAIL SHEET 3)

NORTH 1/4 CORNER SECTION 1, T.-2-S., R.-10-E.

JOY ROAD (120 FT. WIDE)



JOHN N. FORD'S TIREMAN AVE. SUBDIVISION NO. 1 L. 58, P. 61

ASBURY PARK AVE. (86 FT. WIDE)

JOHN N. FORD'S TIREMAN AVE. SUBDIVISION L. 52, P. 75

EAST - WEST 1/4 LINE SECTION 1

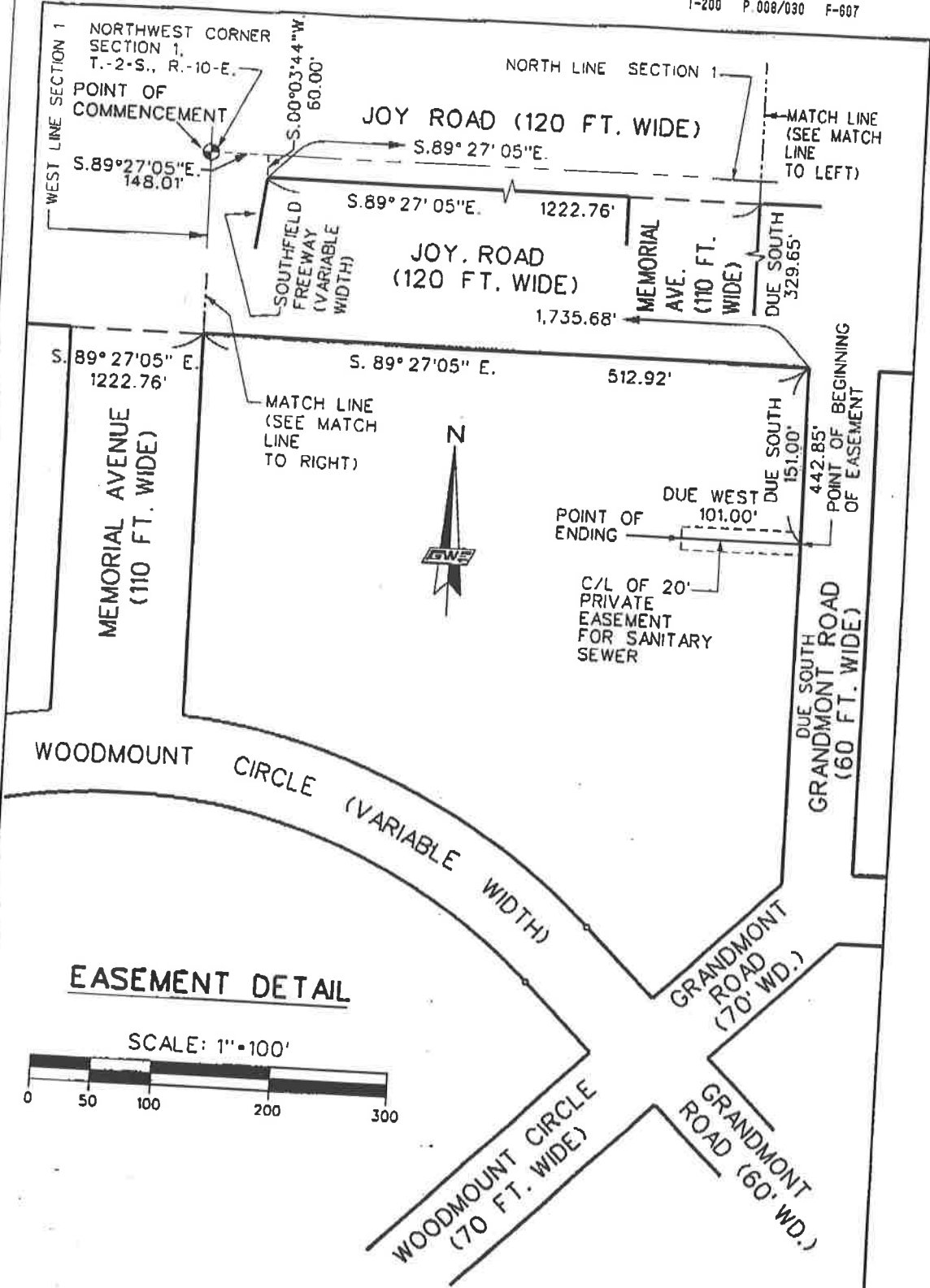
TIREMAN AVENUE (103 FT. WIDE)

**SANITARY SEWER EASEMENT**  
 A PART OF THE NORTHWEST 1/4 OF SECTION 1,  
 T-2-S., R-10-E, CITY OF DETROIT,  
 WAYNE COUNTY, MICHIGAN

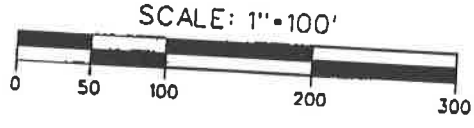
Copyright © 2006 Giffels-Webster Engineers, Inc.  
 All rights reserved. No part of this drawing may be reproduced without the prior written consent of Giffels-Webster Engineers, Inc.

**GWE**  
 Giffels-Webster Engineers, Inc.  
 ENGINEERS LAND SURVEYORS PLANNERS LANDSCAPE ARCHITECTS  
 2871 BOND STREET, ROCHESTER HILLS, MI. 48309  
 (248) 852-3100

DATE: 5-1-06	CHECKED BY: R.D.K.	DATE:	SCALE: 1"=300'
DRAWN: M.I.			SHEET: 2 OF 5
DESIGN:			JOB No: 16016.200
SECTION: 1	T-2-S., R-10-E.		



**EASEMENT DETAIL**



**SANITARY SEWER EASEMENT**  
 A PART OF THE NORTHWEST 1/4 OF SECTION 1,  
 T-2-S., R-10-E, CITY OF DETROIT,  
 WAYNE COUNTY, MICHIGAN

Giffels-Webster Engineers, Inc.  
 No reproduction or use of any part of this drawing without the prior written consent of Giffels-Webster Engineers, Inc.

**GWE**  
 Giffels-Webster Engineers, Inc.  
 ENGINEERS LAND SURVEYORS PLANNERS LANDSCAPE ARCHITECTS  
 2871 BOND STREET, ROCHESTER HILLS, MI. 48309  
 (248) 852-3100

DATE: 5-1-06	CHECKED BY: R.D.K.	DATE:	SCALE: 1" = 100'
DRAWN: M.L.			SHEET: 3 OF 5
DESIGN:			JOB No: 16016.20D
SECTION: 1	T-2-S., R-10-E.		

**LEGAL DESCRIPTION OF PARCEL**

A PART OF THE NORTHWEST 1/4 OF SECTION 1, T-2-S., R-10-E., CITY OF DETROIT, WAYNE COUNTY, MICHIGAN, LOTS 444 THROUGH 469 AND 543 THROUGH 596 AND LOTS 669 THROUGH 722 AND LOTS 762 THROUGH 815 AND LOTS 821 THROUGH 847 AND PART OF LOTS 417 THROUGH 443 AND PART OF LOTS 540 THROUGH 542 AND PART OF LOT 470 AND PART OF LOTS 597 THROUGH 599 AND PART OF LOTS 666 THROUGH 668 AND PART OF LOTS 723 THROUGH 725 AND PART OF LOTS 759 THROUGH 761 AND PART OF LOTS 816 THROUGH 820 OF "WEST HAVEN NO. 1" SUBDIVISION AS RECORDED IN LIBER 43, PAGE 37 OF PLATS, WAYNE COUNTY RECORDS, ALSO LOTS 72 THROUGH 113 AND LOTS 127 THROUGH 180 AND LOTS 191 THROUGH 244 AND LOTS 255 THROUGH 308 AND PART OF LOTS 1 THROUGH 37 AND PART OF LOTS 67 THROUGH 71 AND PART OF LOT 114 AND PART OF LOTS 122 THROUGH 126 AND PART OF LOTS 181 THROUGH 190 AND PART OF LOTS 245 THROUGH 254 AND PART LOTS 309 THROUGH 313 OF JOHN N. FORD'S TIREMAN AVE. SUBDIVISION AS RECORDED IN LIBER 52, PAGE 75 OF PLATS, WAYNE COUNTY RECORDS, ALSO LOTS 343 THROUGH 541 AND PART OF LOTS 314 THROUGH 542 OF JOHN N. FORD'S TIREMAN AVE. SUBDIVISION NO. 1 AS RECORDED IN LIBER 58 PAGE 61 OF PLATS, WAYNE COUNTY RECORDS ALSO THE REVERSIONARY INTEREST IN THAT PART OF VAN BUREN AVENUE (30 FEET WIDE) AND 60 FEET WIDE, CONSTANCE AVENUE (30 FEET WIDE AND 60 FEET WIDE), BELTON AVENUE (60 FEET WIDE) ARCHDALE AVENUE (60 FEET WIDE), LONGACRE AVENUE (50 FEET WIDE), RUTLAND AVENUE (50 FEET WIDE), CLAYBURN AVENUE (50 FEET WIDE), MEMORIAL AVENUE (60 FEET WIDE), ABINGTON ROAD (60 FEET WIDE), GRANDMONT ROAD (60 FEET WIDE AND 30 FEET WIDE), WOODMONT ROAD (60 FEET WIDE) AND PUBLIC ALLEY WAYS (20 FEET WIDE), (18 FEET WIDE) AND 9 FEET WIDE ALL LYING WITHIN THE BOUNDS OF THE PARCEL, SAID PARCEL BEING MORE PARTICULARLY DESCRIBED AS COMMENCING AT THE NORTHWEST CORNER OF SAID SECTION 1; THENCE S. 89°27'05" E., 148.01 FEET ALONG THE NORTH LINE OF SECTION 1 (JOY ROAD 120 FT. WIDE); THENCE S. 00°03'44" W., 60 FEET TO THE POINT OF BEGINNING ON THE SOUTH RIGHT OF WAY LINE OF JOY ROAD; THENCE S. 89°27'05" E., 2245.82 FEET ALONG SAID SOUTH RIGHT OF WAY LINE TO A POINT ON THE SOUTHWEST RIGHT OF WAY LINE OF THE C & O RAILROAD RIGHT OF WAY; THENCE S. 42°49'34" E., 278.04 FEET ALONG SAID SOUTHWEST RIGHT OF WAY LINE TO A POINT ON THE WEST RIGHT OF WAY LINE OF ASBURY PARK AVENUE (86 FEET WIDE); THENCE S. 00°12'52" E., 1895.33 FEET ALONG SAID WEST RIGHT OF WAY LINE; THENCE S. 89°47'08" W., 160.00 FEET; THENCE S. 00°12'52" E., 92.10 FEET; THENCE S. 45°03'28" W., 191.56 FEET; THENCE S. 89°47'08" W., 94.72 FEET; THENCE S. 00°12'52" E., 186.60 FEET TO A POINT ON THE NORTH RIGHT OF WAY LINE OF TIREMAN AVENUE (103 FEET WIDE); THENCE N. 89°22'00" W., 1872.40 FEET ALONG SAID NORTH RIGHT OF WAY LINE; THENCE N. 00°03'44" E., 128.00 FEET; THENCE N. 89°22'00" W., 229.00 FEET TO A POINT ON THE EAST RIGHT OF WAY LINE OF THE SOUTHFIELD FREEWAY (VARIABLE WIDTH) THENCE THE FOLLOWING FOUR COURSES BEING ALONG THE SAID EAST RIGHT OF WAY LINE (1) N. 00°03'44" E., 1986.56 FEET, AND (2) N. 04°18'00" E., 108.59 FEET AND (3) N. 08°34'35" E., 100.98 FEET AND (4) N. 06°58'44" E., 191.20 FEET TO THE POINT OF BEGINNING AND CONTAINING 138.04 ACRES

**SANITARY SEWER EASEMENT**

A PART OF THE NORTHWEST 1/4 OF SECTION 1,  
T-2-S., R-10-E, CITY OF DETROIT,  
WAYNE COUNTY, MICHIGAN

REVISED SHT.  
NO. 12/6/05  
REVISED SHT.  
NO. 9/9/05

**GWE**  
Giffels-Webster Engineers, Inc.  
ENGINEERS LAND SURVEYORS PLANNERS LANDSCAPE ARCHITECTS  
2871 BOND STREET, ROCHESTER HILLS, MI. 48309  
(248) 852-3100


DATE: 5-1-06	CHECKED BY: DATE	SCALE:
DRAWN: M.I.	R.D.K.	SHEET: 4 OF 5
DESIGN:		JOB No: 16016.200
SECTION: 1	T-2-S., R-10-E.	

DESCRIPTION OF A 20 FOOT WIDE PRIVATE EASEMENT FOR SANITARY SEWER

THE CENTERLINE OF A 20 FOOT WIDE PRIVATE EASEMENT FOR SANITARY SEWER IS DESCRIBED AS A PART OF THE NORTHWEST 1/4 OF SECTION 1, T-2-S., R-10-E., CITY OF DETROIT, WAYNE COUNTY, MICHIGAN, BEING MORE PARTICULARLY DESCRIBED AS COMMENCING AT THE NORTHWEST CORNER OF SAID SECTION 1; THENCE S. 89°27'05" E., 148.01 FEET ALONG THE NORTH LINE OF SAID SECTION 1 (JOY ROAD 120 FT. WIDE); THENCE S. 00°03'44" W., 60.00 FEET TO A POINT ON THE SOUTH RIGHT OF WAY LINE OF JOY ROAD; THENCE S. 89°27'05" E., 1,735.68 FEET ALONG SAID SOUTH RIGHT OF WAY TO A POINT ON THE WEST RIGHT OF WAY LINE OF GRANDMONT ROAD (60 FEET WIDE); THENCE DUE SOUTH, 151.00 FEET ALONG SAID LINE TO THE POINT OF BEGINNING; THENCE DUE WEST, 101.00 FEET TO THE POINT OF ENDING.

SANITARY SEWER EASEMENT  
A PART OF THE NORTHWEST 1/4 OF SECTION 1,  
T-2-S., R-10-E, CITY OF DETROIT,  
WAYNE COUNTY, MICHIGAN

Copyright © 2006 by Giffels-Webster Engineers, Inc. All rights reserved. No reproduction or translation is permitted without the prior written consent of Giffels-Webster Engineers, Inc.

 <b>Giffels-Webster Engineers, Inc.</b> ENGINEERS LAND SURVEYORS PLANNERS LANDSCAPE ARCHITECTS 2871 BOND STREET, ROCHESTER HILLS, MI. 48309 (248) 852-3100	DATE: 5-1-06	CHECKED BY: DATE	SCALE:
	DRAWN: M.I.	R.D.K.	SHEET: 5 OF 5
	DESIGN:		JOB No: 16016.200
	SECTION: 1	T-2-S., R-10-E.	

SCALE: 1" = 300'



NORTHWEST CORNER SECTION 1, T.-2-S., R.-10-E.

POINT OF COMMENCEMENT

JOY ROAD (120 FT. WIDE)

NORTH LINE SECTION 1

MEMORIAL AVENUE (110 FT. WIDE)



S.89°27'05"E. 148.01'

S.89° 27' 05" E. 2245.82'

POINT OF BEGINNING OF PARCEL

ESMT. NO. 2  
ESMT. NO. 1

C/L OF 20' PRIVATE EASEMENT FOR WATER MAIN

WOODMOUNT CIRCLE (VARIABLE WIDTH)

WOODMOUNT CIR (70 FT. WIDE)

JOHN N. FORD'S TIREMAN AVE. SUBDIVISION NO. 1 L. 58, P. 61

MATCH LINE SEE SHEET 2

SOUTHFIELD FREEWAY (VARIABLE WIDTH)

WEST LINE SECTION 1  
N.00° 03' 44" E. 1,986.56'

CONSTANCE AVE. 30' WD.  
LONGACRE AVE. 50' WD.

LONGACRE AVENUE

CONSTANCE AVE. (60 FT. WIDE)

WOODMOUNT CIR. (70 FT. WIDE)

RUTLAND AVE. 50' WD.

JOHN N. FORD'S TIREMAN AVE. SUBDIVISION L. 52, P. 75

CLAYBURN AVE. 50' WD.



N.89° 22' 00" W. 229.00'

N.89° 22' 00" W. 1,872.40'

TIREMAN AVENUE (103 FT. WIDE)

C/L OF 18' PRIVATE EASEMENT FOR WATER MAIN

EAST - WEST 1/4 LINE SECTION 1

WEST 1/4 CORNER SECTION 1, T.-2-S., R.-10-E.

**WATER MAIN EASEMENT**

A PART OF THE NORTHWEST 1/4 OF SECTION 1, T-2-S., R-10-E, CITY OF DETROIT, WAYNE COUNTY, MICHIGAN

**GWE**  
Giffels-Webster Engineers, Inc.  
ENGINEERS LAND SURVEYORS PLANNERS LANDSCAPE ARCHITECTS  
2871 BOND STREET, ROCHESTER HILLS, MI. 48309  
(248) 852-3100

DATE: 5-1-06	CHECKED BY DATE	SCALE: 1"=300'
DRAWN: M.I.	R.D.K.	SHEET: 1 OF 9
DESIGN:		
SECTION: 1	T-2-S., R-10-E.	JOB No: 16016,200



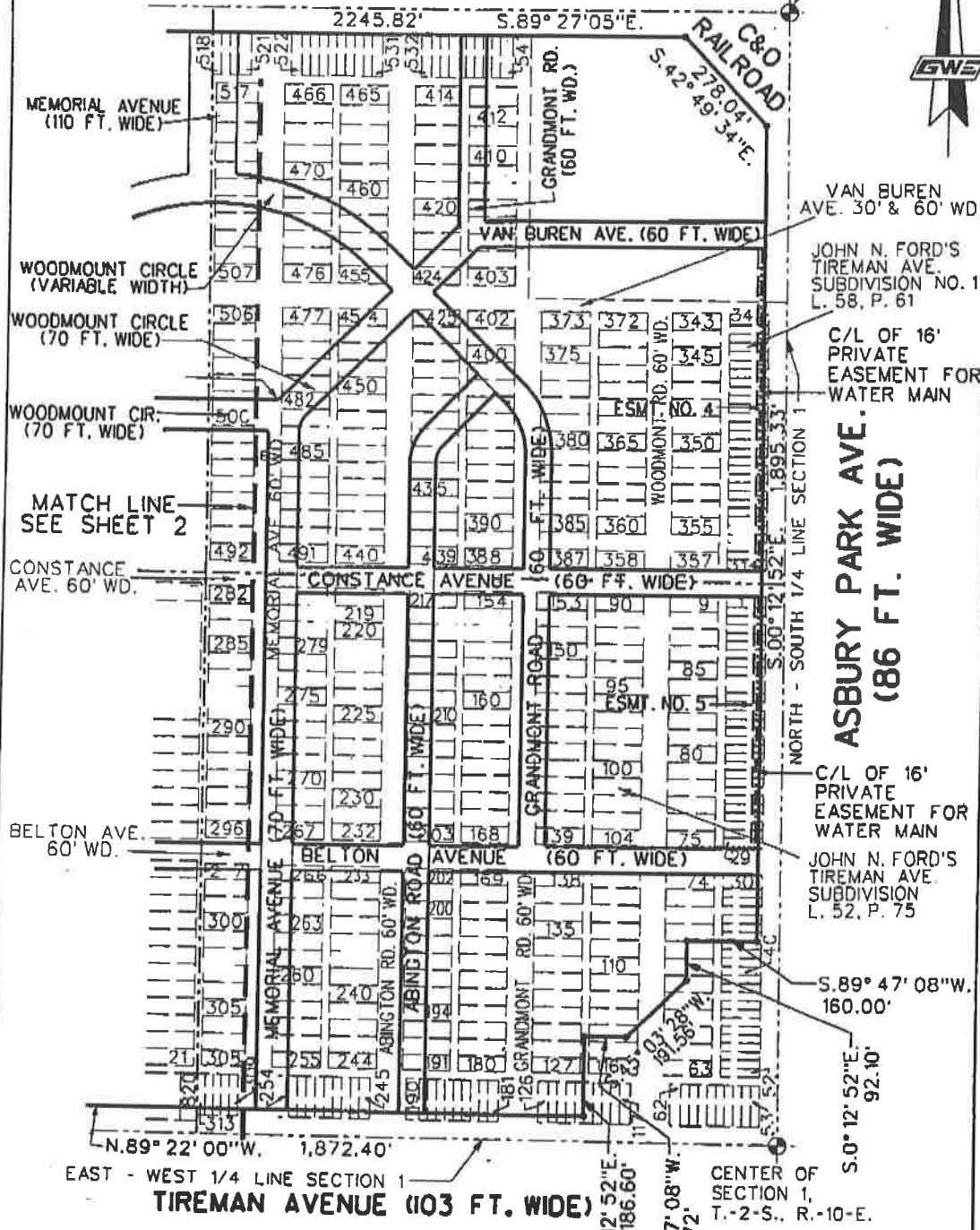
SCALE: 1"=300'



NORTH 1/4 CORNER  
SECTION 1,  
T.-2-S., R.-10-E.



JOY ROAD (120 FT. WIDE)

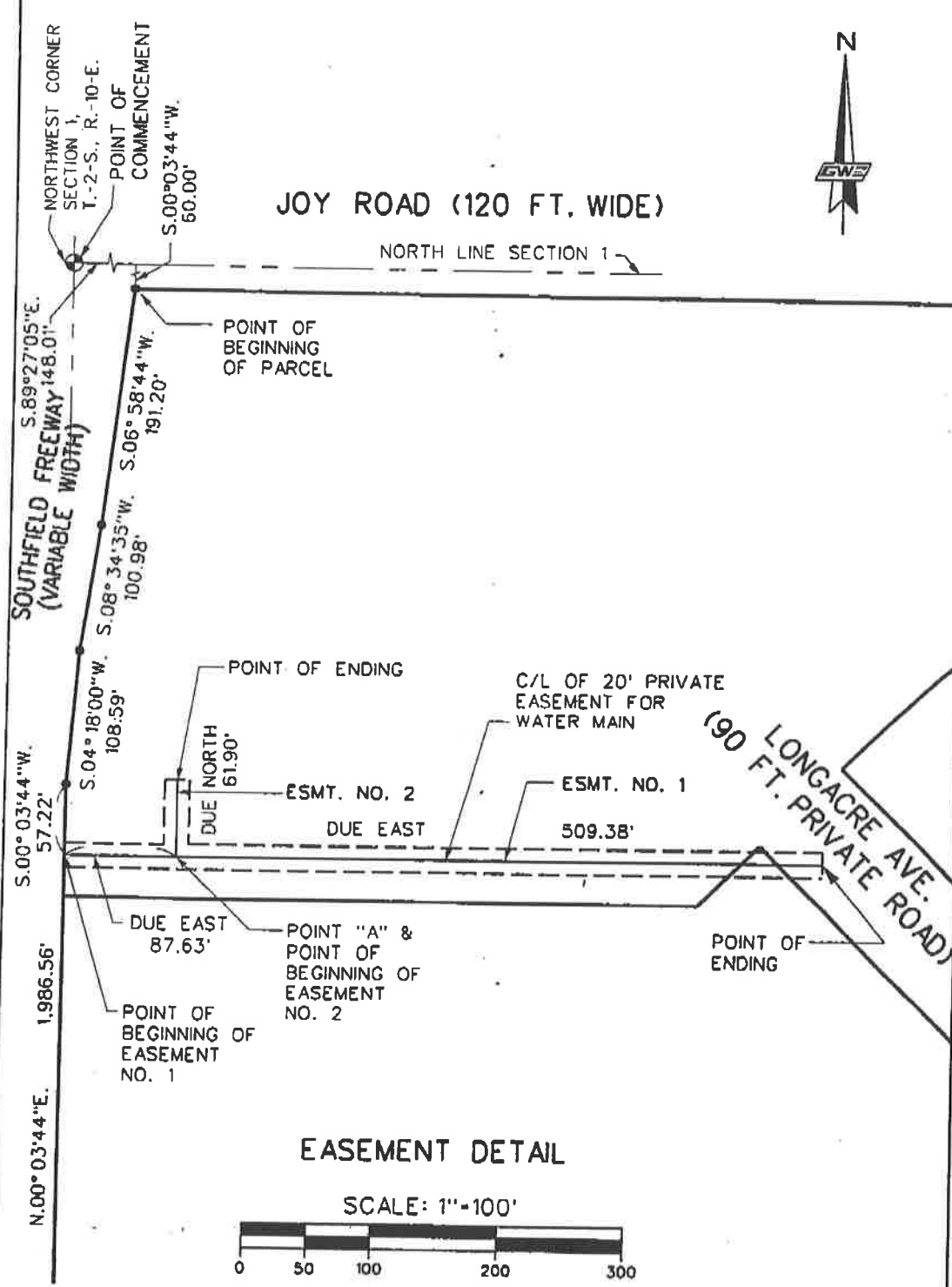


**WATER MAIN EASEMENT**  
A PART OF THE NORTHWEST 1/4 OF SECTION 1,  
T-2-S., R-10-E, CITY OF DETROIT,  
WAYNE COUNTY, MICHIGAN

GWE  
 Giffels-Water Engineers, Inc.  
 ENGINEERS LAND SURVEYORS PLANNERS LANDSCAPE ARCHITECTS  
 2871 BOND STREET, ROCHESTER HILLS, MI. 48309  
 (248) 852-3100

DATE: 5.1.06	CHECKED BY DATE	SCALE: 1"=300'
DRAWN: M.I.	R.D.K.	SHEET: 2 OF 9
DESIGN:		JOB No: 16016.200
SECTION: 1	T-2-S., R-10-E.	

m:/16016.200/Easement/son-water-main-esmt-detail-ph2.dgn



**WATER MAIN EASEMENT**  
 A PART OF THE NORTHWEST 1/4 OF SECTION 1,  
 T-2-S., R-10-E, CITY OF DETROIT,  
 WAYNE COUNTY, MICHIGAN

**GWE**  
 Giffels-Webster Engineers, Inc.  
 ENGINEERS LAND SURVEYORS PLANNERS LANDSCAPE ARCHITECTS  
 2871 BOND STREET, ROCHESTER HILLS, MI. 48309  
 (248) 852-3100

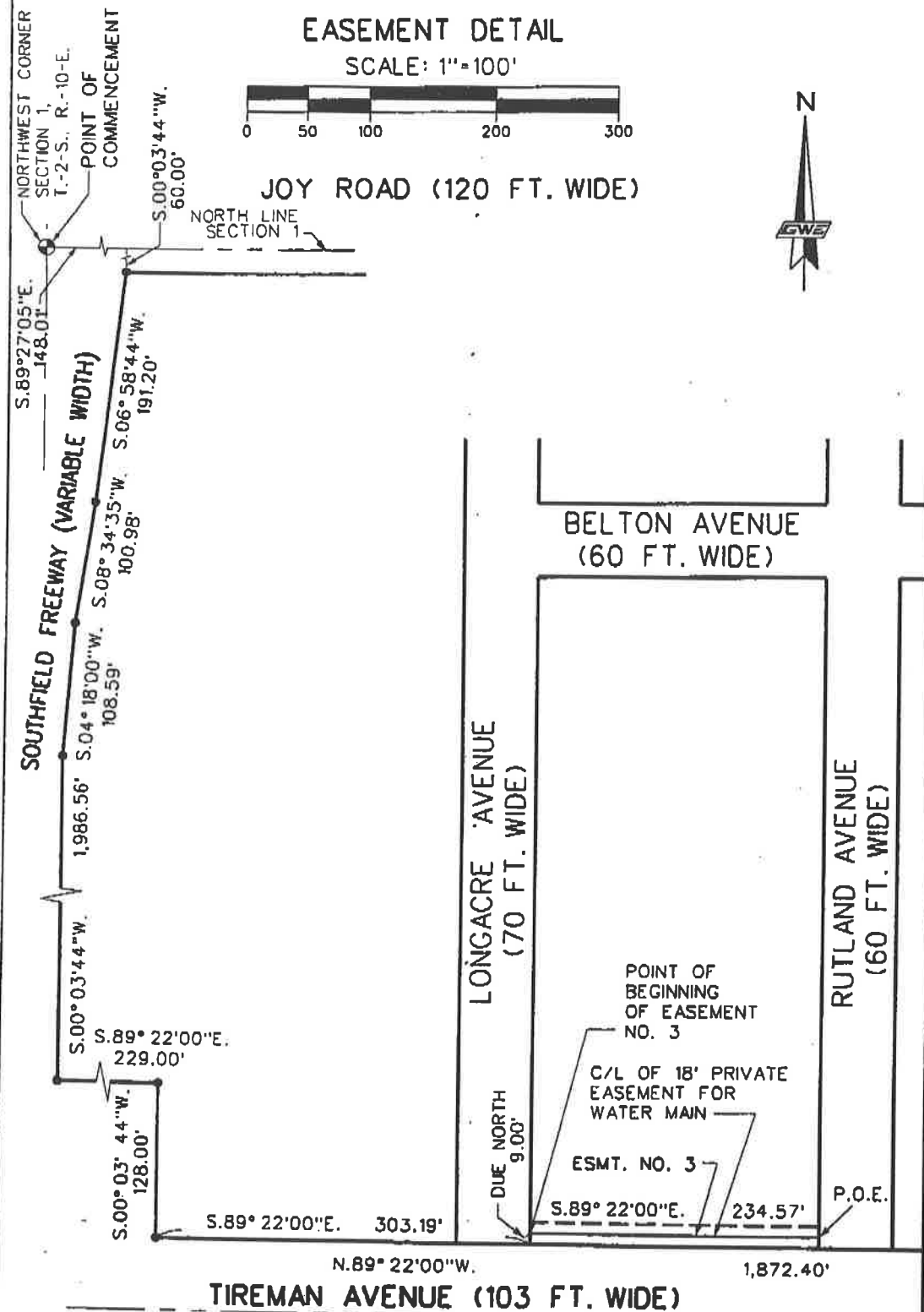
DATE: 5.1.06	CHECKED BY: R.D.K.	DATE:	SCALE: 1" = 100'
DRAWN: M.I.			SHEET: 3 OF 9
DESIGN:			JOB No: 16016.200
SECTION: 1	T-2-S., R-10-E		

All work is subject to the provisions of the professional contract of Giffels-Webster Engineers, Inc.

m:/16016.200/Easement/son-water-main-esmt-detail-ph2.dgn

### EASEMENT DETAIL

SCALE: 1"=100'



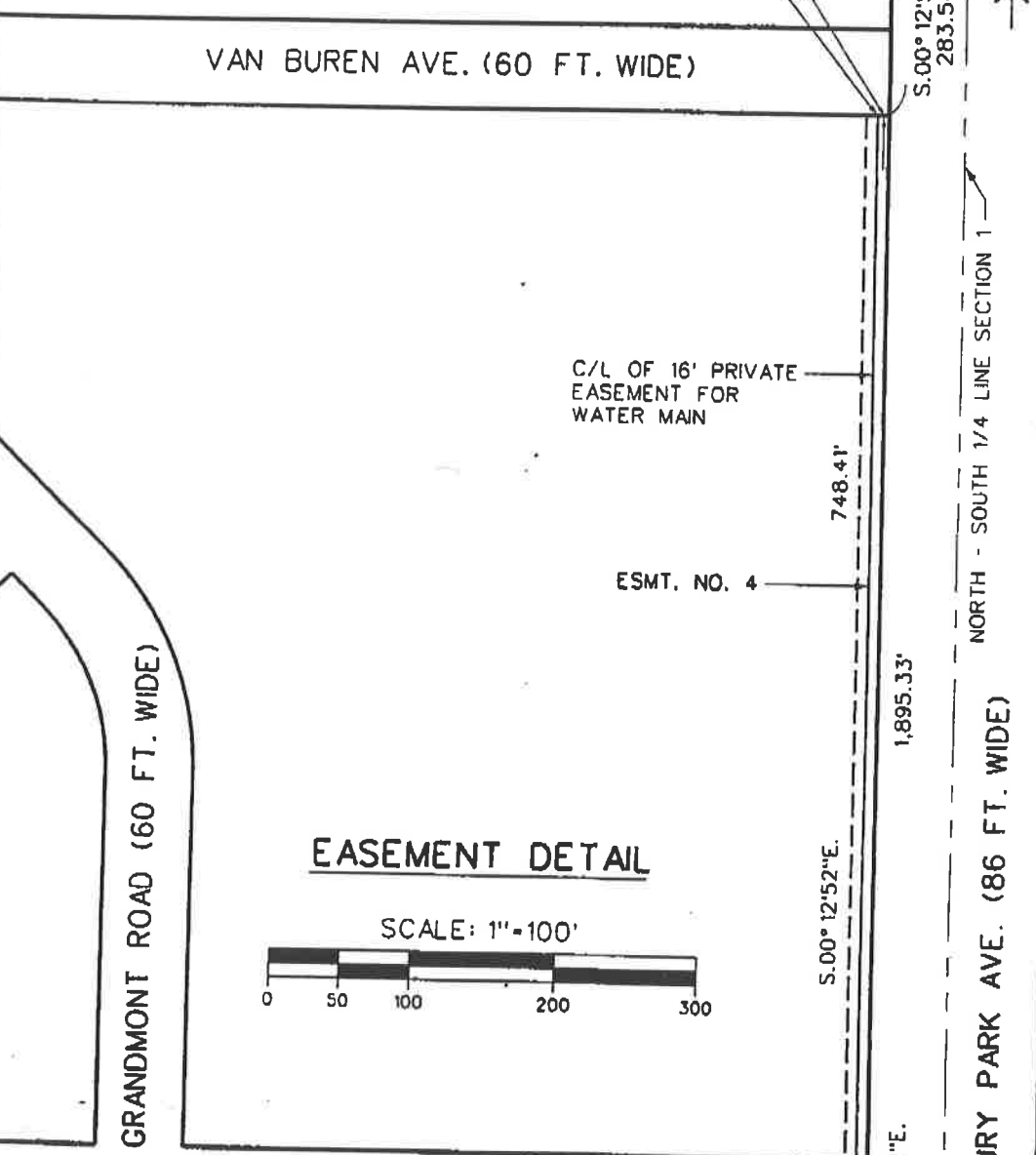
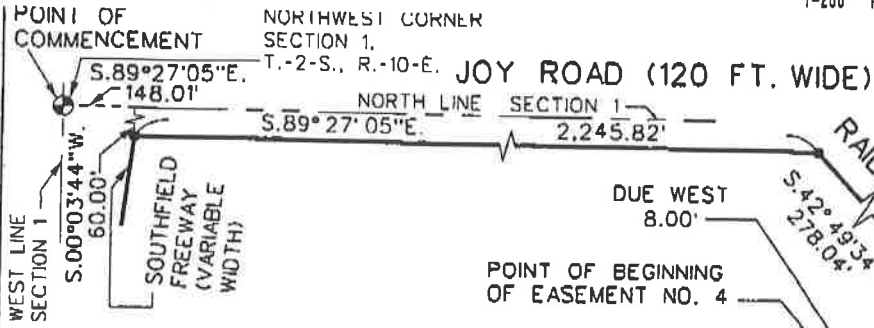
**WATER MAIN EASEMENT**  
 A PART OF THE NORTHWEST 1/4 OF SECTION 1,  
 T-2-S., R-10-E, CITY OF DETROIT,  
 WAYNE COUNTY, MICHIGAN

EAST - WEST 1/4  
 LINE SECTION 1

Giffels-Webster Engineers, Inc.  
 No reproduction shall be made without the prior  
 written consent of Giffels-Webster Engineers, Inc.

**GWE**  
**Giffels-Webster Engineers, Inc.**  
 ENGINEERS LAND SURVEYORS PLANNERS LANDSCAPE ARCHITECTS  
 2871 BOND STREET, ROCHESTER HILLS, MI. 48309  
 (248) 852-3100

DATE: 5.1.06	CHECKED BY: DATE	SCALE: 1" = 100'
DRAWN: M.I.	R.D.K.	SHEET: 4 OF 9
DESIGN:		JOB No: 16016.200
SECTION: 1	T-2-S., R-10-E	



**EASEMENT DETAIL**

SCALE: 1"=100'



CONSTANCE AVENUE (60 FT. WIDE)

**WATER MAIN EASEMENT**

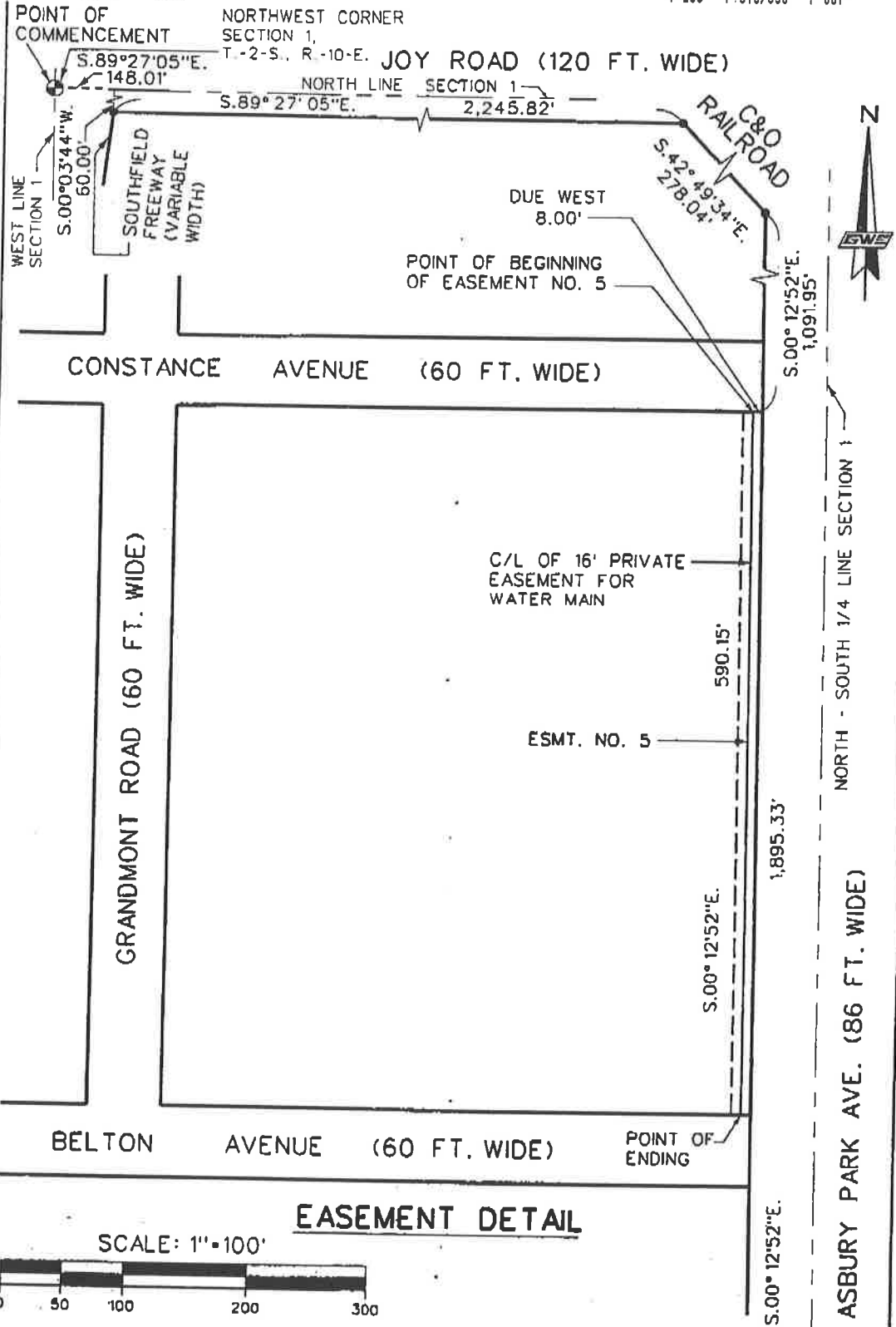
A PART OF THE NORTHWEST 1/4 OF SECTION 1,  
T-2-S., R-10-E, CITY OF DETROIT,  
WAYNE COUNTY, MICHIGAN

No reproduction, copying, or other use of this drawing without the written consent of Giffels-Webster Engineers, Inc.

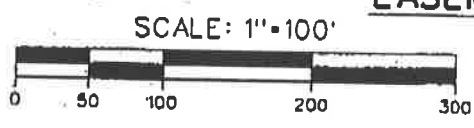
**GWE**  
Giffels-Webster Engineers, Inc.  
ENGINEERS LAND SURVEYORS PLANNERS LANDSCAPE ARCHITECTS  
2871 BOND STREET, ROCHESTER HILLS, MI. 48309  
(248) 852-3100

DATE: 5-1-06	CHECKED BY: DATE	SCALE: 1" = 100'
DRAWN: M.I.	R.D.K.	SHEET: 5 OF 9
DESIGN:		JOB No: 16016.200
SECTION: 1	T-2-S., R-10-E	

m:/16016.200/Easement/son-water-main-esmt-detail-PH2.dgn



**EASEMENT DETAIL**



**WATER MAIN EASEMENT**  
 A PART OF THE NORTHWEST 1/4 OF SECTION 1,  
 T-2-S., R-10-E, CITY OF DETROIT,  
 WAYNE COUNTY, MICHIGAN

**GWE**  
 Giffels-Webster Engineers, Inc.  
 ENGINEERS LAND SURVEYORS PLANNERS, LANDSCAPE ARCHITECTS  
 2871 BOND STREET, ROCHESTER HILLS, MI. 48309  
 (248) 852-3100

DATE: 5.1.06	CHECKED BY: DATE	SCALE: 1" = 100'
DRAWN: M.I.	R.D.K.	SHEET: 6 OF 9
DESIGN:		JOB No: 16016.200
SECTION: 1	T-2-S., R-10-E	

LEGAL DESCRIPTION OF PARCEL

A PART OF THE NORTHWEST 1/ 4 OF SECTION 1, T-2-S., R-10-E., CITY OF DETROIT, WAYNE COUNTY, MICHIGAN. LOTS 444 THROUGH 469 AND 543 THROUGH 596 AND LOTS 669 THROUGH 722 AND LOTS 762 THROUGH 815 AND LOTS 821 THROUGH 847 AND PART OF LOTS 417 THROUGH 443 AND PART OF LOTS 540 THROUGH 542 AND PART OF LOT 470 AND PART OF LOTS 597 THROUGH 599 AND PART OF LOTS 666 THROUGH 668 AND PART OF LOTS 723 THROUGH 725 AND PART OF LOTS 759 THROUGH 761 AND PART OF LOTS 816 THROUGH 820 OF "WEST HAVEN NO. 1" SUBDIVISION AS RECORDED IN LIBER 43, PAGE 37 OF PLATS, WAYNE COUNTY RECORDS. ALSO LOTS 72 THROUGH 113 AND LOTS 127 THROUGH 180 AND LOTS 191 THROUGH 244 AND LOTS 255 THROUGH 308 AND PART OF LOTS 1 THROUGH 37 AND PART OF LOTS 67 THROUGH 71 AND PART OF LOT 114 AND PART OF LOTS 122 THROUGH 126 AND PART OF LOTS 181 THROUGH 190 AND PART OF LOTS 245 THROUGH 254 AND PART LOTS 309 THROUGH 313 OF JOHN N. FORD'S TIREMAN AVE. SUBDIVISION AS RECORDED IN LIBER 52, PAGE 75 OF PLATS, WAYNE COUNTY RECORDS. ALSO LOTS 343 THROUGH 541 AND PART OF LOTS 314 THROUGH 542 OF JOHN N. FORD'S TIREMAN AVE. SUBDIVISION NO. 1 AS RECORDED IN LIBER 58 PAGE 61 OF PLATS, WAYNE COUNTY RECORDS ALSO THE REVERSIONARY INTEREST IN THAT PART OF VAN BUREN AVENUE (30 FEET WIDE) AND 60 FEET WIDE, CONSTANCE AVENUE (30 FEET WIDE AND 60 FEET WIDE), BELTON AVENUE (60 FEET WIDE) ARCHDALE AVENUE (60 FEET WIDE), LONGACRE AVENUE (50 FEET WIDE), RUTLAND AVENUE (50 FEET WIDE), CLAYBURN AVENUE (50 FEET WIDE), MEMORIAL AVENUE (60 FEET WIDE), ABINGTON ROAD (60 FEET WIDE), GRANDMONT ROAD (60 FEET WIDE AND 30 FEET WIDE), WOODMONT ROAD (60 FEET WIDE) AND PUBLIC ALLEY WAYS (20 FEET WIDE), (18 FEET WIDE) AND 9 FEET WIDE ALL LYING WITHIN THE BOUNDS OF THE PARCEL. SAID PARCEL BEING MORE PARTICULARLY DESCRIBED AS COMMENCING AT THE NORTHWEST CORNER OF SAID SECTION 1: THENCE S. 89°27'05" E., 148.01 FEET ALONG THE NORTH LINE OF SECTION 1 (JOY ROAD 120 FT. WIDE); THENCE S. 00°03'44" W., 60 FEET TO THE POINT OF BEGINNING ON THE SOUTH RIGHT OF WAY LINE OF JOY ROAD; THENCE S. 89°27'05" E., 2245.82 FEET ALONG SAID SOUTH RIGHT OF WAY LINE TO A POINT ON THE SOUTHWEST RIGHT OF WAY LINE OF THE C & D RAILROAD RIGHT OF WAY; THENCE S. 42°49'34" E., 278.04 FEET ALONG SAID SOUTHWEST RIGHT OF WAY LINE TO A POINT ON THE WEST RIGHT OF WAY LINE OF ASBURY PARK AVENUE (86 FEET WIDE); THENCE S. 00°12'52" E., 1895.33 FEET ALONG SAID WEST RIGHT OF WAY LINE; THENCE S. 89°47'08" W., 160.00 FEET; THENCE S. 00°12'52" E., 92.10 FEET; THENCE S. 45°03'28" W., 191.56 FEET; THENCE S. 89°47'08" W., 94.72 FEET; THENCE S. 00°12'52" E., 186.60 FEET TO A POINT ON THE NORTH RIGHT OF WAY LINE OF TIREMAN AVENUE (103 FEET WIDE); THENCE N. 89°22'00" W., 1872.40 FEET ALONG SAID NORTH RIGHT OF WAY LINE; THENCE N. 00°03'44" E., 128.00 FEET; THENCE N. 89°22'00" W., 229.00 FEET TO A POINT ON THE EAST RIGHT OF WAY LINE OF THE SOUTHFIELD FREEWAY (VARIABLE WIDTH) THENCE THE FOLLOWING FOUR COURSES BEING ALONG THE SAID EAST RIGHT OF WAY LINE (1) N. 00°03'44" E. 1986.56 FEET, AND (2) N. 04°18'00" E., 108.59 FEET AND (3) N. 08°34'35" E., 100.98 FEET AND (4) N. 06°58'44" E., 191.20 FEET TO THE POINT OF BEGINNING AND CONTAINING 138.04 ACRES

WATER MAIN EASEMENT

A PART OF THE NORTHWEST 1/4 OF SECTION 1, T-2-S., R-10-E, CITY OF DETROIT, WAYNE COUNTY, MICHIGAN

Copyright © 2006 by Giffels-Webster Engineers, Inc. No reproduction shall be made without the prior written consent of Giffels-Webster Engineers, Inc.

**GWE**  
**Giffels-Webster Engineers, Inc.**  
 ENGINEERS LAND SURVEYORS PLANNERS LANDSCAPE ARCHITECTS  
 2871 BOND STREET, ROCHESTER HILLS, MI. 48309  
 (248) 852-3100

DATE: 5-1-06	CHECKED BY: DATE	SCALE:
DRAWN: M.J.	R.D.K.	SHEET: 7 OF 9
DESIGN:		JOB No: 16016.200
SECTION: 1	T-2-S., R-10-E.	

### EASEMENT NO. 1

#### DESCRIPTION OF A 20 FOOT WIDE PRIVATE EASEMENT FOR WATER MAIN

THE CENTERLINE OF A 20 FOOT WIDE PRIVATE EASEMENT FOR WATER MAIN IS DESCRIBED AS A PART OF THE NORTHWEST 1/4 OF SECTION 1, T-2-S., R-10-E., CITY OF DETROIT, WAYNE COUNTY, MICHIGAN, BEING MORE PARTICULARLY DESCRIBED AS COMMENCING AT THE NORTHWEST CORNER OF SAID SECTION 1; THENCE S. 89°27'05" E., 148.01 FEET ALONG THE NORTH LINE OF SAID SECTION 1 (JOY ROAD 120 FT. WIDE); THENCE S. 00°03'44" W., 60.00 FEET TO SOUTHEAST CORNER OF JOY ROAD AND THE SOUTHFIELD FREEWAY (VARIABLE WIDTH); THENCE THE FOLLOWING FOUR COURSES BEING ALONG THE EAST LINE OF SAID SOUTHFIELD FREEWAY (1) S. 06°58'44" W., 191.20 FEET AND (2) S. 08°34'35" W., 100.98 FEET AND (3) S. 04°18'00" W., 108.59 FEET AND (4) S. 00°03'44" W., 57.22 FEET TO THE POINT OF BEGINNING; THENCE THE FOLLOWING TWO COURSES BEING ALONG SAID CENTERLINE (1) DUE EAST, 87.63 FEET TO POINT "A" AND (2) DUE EAST, 509.38 FEET TO THE POINT OF ENDING.

### EASEMENT NO. 2

#### DESCRIPTION OF A 20 FOOT WIDE PRIVATE EASEMENT FOR WATER MAIN

THE CENTERLINE OF A 20 FOOT WIDE PRIVATE EASEMENT FOR WATER MAIN IS DESCRIBED AS A PART OF THE NORTHWEST 1/4 OF SECTION 1, T-2-S., R-10-E., CITY OF DETROIT, WAYNE COUNTY, MICHIGAN, BEGINNING AT POINT "A" AS DESCRIBED IN EASEMENT NO. 1; THENCE ALONG SAID CENTERLINE DUE NORTH, 61.90 FEET TO THE POINT OF ENDING.

### EASEMENT NO. 3


#### DESCRIPTION OF AN 18 FOOT WIDE PRIVATE EASEMENT FOR WATER MAIN

THE CENTERLINE OF AN 18 FEET WIDE PRIVATE EASEMENT FOR WATER MAIN IS DESCRIBED AS A PART OF THE NORTHWEST 1/4 OF SECTION 1, T-2-S., R-10-E., CITY OF DETROIT, WAYNE COUNTY, MICHIGAN, BEING MORE PARTICULARLY DESCRIBED AS COMMENCING AT THE NORTHWEST CORNER OF SAID SECTION 1, THENCE S. 89°27'05" E., 148.01 FEET ALONG THE NORTH LINE OF SECTION 1 (JOY ROAD 120 FEET WIDE); THENCE S. 00°03'44" W., 60.00 FEET TO THE SOUTHEAST CORNER OF JOY ROAD AND THE SOUTHFIELD FREEWAY (VARIABLE WIDTH); THENCE THE FOLLOWING FOUR COURSES BEING ALONG THE EAST LINE OF SAID SOUTHFIELD FREEWAY (1) S. 06°58'44" W., 191.20 FEET; AND (2) S. 08°34'35" W., 100.98 FEET AND; (3) S. 04°18'00" W., 108.59 FEET; AND (4) S. 00°03'44" W., 1986.56 FEET; THENCE S. 89°22'00" E., 229.00 FEET; THENCE S. 00°03'44" W., 128.00 FEET TO A POINT ON THE NORTH LINE OF TIREMAN AVENUE (103 FEET WIDE); THENCE S. 89°22'00" E., 303.19 FEET ALONG SAID LINE TO A POINT ON THE EAST LINE OF LONGACRE AVENUE; (60 FEET WIDE) THENCE DUE NORTH, 9.00 FEET ALONG SAID LINE TO THE POINT OF BEGINNING; THENCE S. 89°22'00" E., 234.57 FEET TO THE POINT OF ENDING.

## WATER MAIN EASEMENT

A PART OF THE NORTHWEST 1/4 OF SECTION 1,  
T-2-S., R-10-E, CITY OF DETROIT,  
WAYNE COUNTY, MICHIGAN

No reproduction shall be made without the prior written consent of Giffels-Webster Engineers, Inc.

 <b>Giffels-Webster Engineers, Inc.</b> ENGINEERS LAND SURVEYORS PLANNERS LANDSCAPE ARCHITECTS 2871 BOND STREET, ROCHESTER HILLS, MI. 48309 (248) 852-3100	DATE: 5.1.06	CHECKED BY: DATE	SCALE:
	DRAWN: M.L.	R.D.K.	SHEET: 8 OF 9
	DESIGN:		JOB No: 16016.200
	SECTION: 1	T-2-S., R-10-E	

m:\16016.200\Easement\son-water-main-esmt-detail-ph2.dgn

### EASEMENT NO. 4

#### DESCRIPTION OF A 16 FOOT WIDE PRIVATE EASEMENT FOR WATER MAIN

THE CENTERLINE OF A 16 FOOT WIDE PRIVATE EASEMENT FOR WATER MAIN IS DESCRIBED AS A PART OF THE NORTHWEST 1/4 OF SECTION 1, T-2-S., R-10-E., CITY OF DETROIT, WAYNE COUNTY, MICHIGAN, BEING MORE PARTICULARLY DESCRIBED AS COMMENCING AT THE NORTHWEST CORNER OF SAID SECTION 1; THENCE S. 89°27'05" E., 148.01 FEET ALONG THE NORTH LINE OF SAID SECTION 1 (JOY ROAD 120 FT. WIDE); THENCE S. 00°03'44" W., 60.00 FEET TO A POINT ON THE SOUTH RIGHT OF WAY LINE OF JOY ROAD; THENCE S. 89°27'05" E., 2,245.82 FEET ALONG SAID SOUTH RIGHT OF WAY LINE TO A POINT ON THE SOUTHWEST RIGHT OF WAY LINE OF THE C & O RAILROAD RIGHT OF WAY; THENCE S. 42°49'34" E., 278.04 FEET ALONG SAID SOUTHWEST RIGHT OF WAY LINE TO A POINT ON THE WEST RIGHT OF WAY LINE OF ASBURY PARK AVENUE (86 FEET WIDE); THENCE S. 00°12'52" E., 283.54 FEET TO A POINT ON THE SOUTH LINE OF VAN BUREN AVENUE (60 FEET WIDE); THENCE DUE WEST, 8.00 FEET TO THE POINT OF BEGINNING; THENCE S. 00°12'52" E., 748.41 FEET TO THE POINT OF ENDING.

### EASEMENT NO. 5

#### DESCRIPTION OF A 16 FOOT WIDE PRIVATE EASEMENT FOR WATER MAIN

THE CENTERLINE OF A 16 FOOT WIDE PRIVATE EASEMENT FOR WATER MAIN IS DESCRIBED AS A PART OF THE NORTHWEST 1/4 OF SECTION 1, T-2-S., R-10-E., CITY OF DETROIT, WAYNE COUNTY, MICHIGAN, BEING MORE PARTICULARLY DESCRIBED AS COMMENCING AT THE NORTHWEST CORNER OF SAID SECTION 1; THENCE S. 89°27'05" E., 148.01 FEET ALONG THE NORTH LINE OF SAID SECTION 1 (JOY ROAD 120 FT. WIDE); THENCE S. 00°03'44" W., 60.00 FEET TO A POINT ON THE SOUTH RIGHT OF WAY LINE OF JOY ROAD; THENCE S. 89°27'05" E., 2,245.82 FEET ALONG SAID SOUTH RIGHT OF WAY LINE TO A POINT ON THE SOUTHWEST RIGHT OF WAY LINE OF THE C & O RAILROAD RIGHT OF WAY; THENCE S. 42°49'34" E., 278.04 FEET ALONG SAID SOUTHWEST RIGHT OF WAY LINE TO A POINT ON THE WEST RIGHT OF WAY LINE OF ASBURY PARK AVENUE (86 FEET WIDE); THENCE S. 00°12'52" E., 1,091.95 FEET TO A POINT ON THE SOUTH LINE OF CONSTANCE AVENUE (60 FEET WIDE); THENCE DUE WEST, 8.00 FEET TO THE POINT OF BEGINNING; THENCE S. 00°12'52" E., 590.15 FEET TO THE POINT OF ENDING.

## WATER MAIN EASEMENT

A PART OF THE NORTHWEST 1/4 OF SECTION 1,  
T-2-S., R-10-E, CITY OF DETROIT,  
WAYNE COUNTY, MICHIGAN

ALL RIGHTS RESERVED BY GIFFELS-WEBSTER ENGINEERS, INC.  
 NO REPRODUCTION PERMITTED WITHOUT THE WRITTEN  
 CONSENT OF GIFFELS-WEBSTER ENGINEERS, INC.

 <b>Giffels-Webster Engineers, Inc.</b> ENGINEERS LAND SURVEYORS PLANNERS LANDSCAPE ARCHITECTS 2871 BOND STREET, ROCHESTER HILLS, MI. 48309 (248) 852-3100	DATE: 5.1.06	CHECKED BY: DATE	SCALE:
	DRAWN: M.I.	R.D.K.	SHEET: 9 OF 9
	DESIGN:		JOB No: 16016.200
	SECTION: 1	T-2-S., R-10-E	

m:/16016.200/Easement/san-water-main-esmt-detail-ph2.dwg





2871 Bond Street • Rochester Hills, MI 48309 • 248-852-3100 • 248-852-6372 fax

### TRANSMITTAL

**Project No.:** 16016.01D

**Date:** 12-07-05

**Send To:** DWSD - Engineering Division  
1420 Washington Blvd., Suite 500  
Detroit, MI 48226-2830

**ATTN:** Mr. Michael Kubien

**Sent From:** John Clark

**Sent Via:**  U.S. Mail  U.P.S. Ground  U.P.S. Overnight  Delivered

**Regarding:** Garden View Estates - Phase 1

**Please find the following enclosed:**

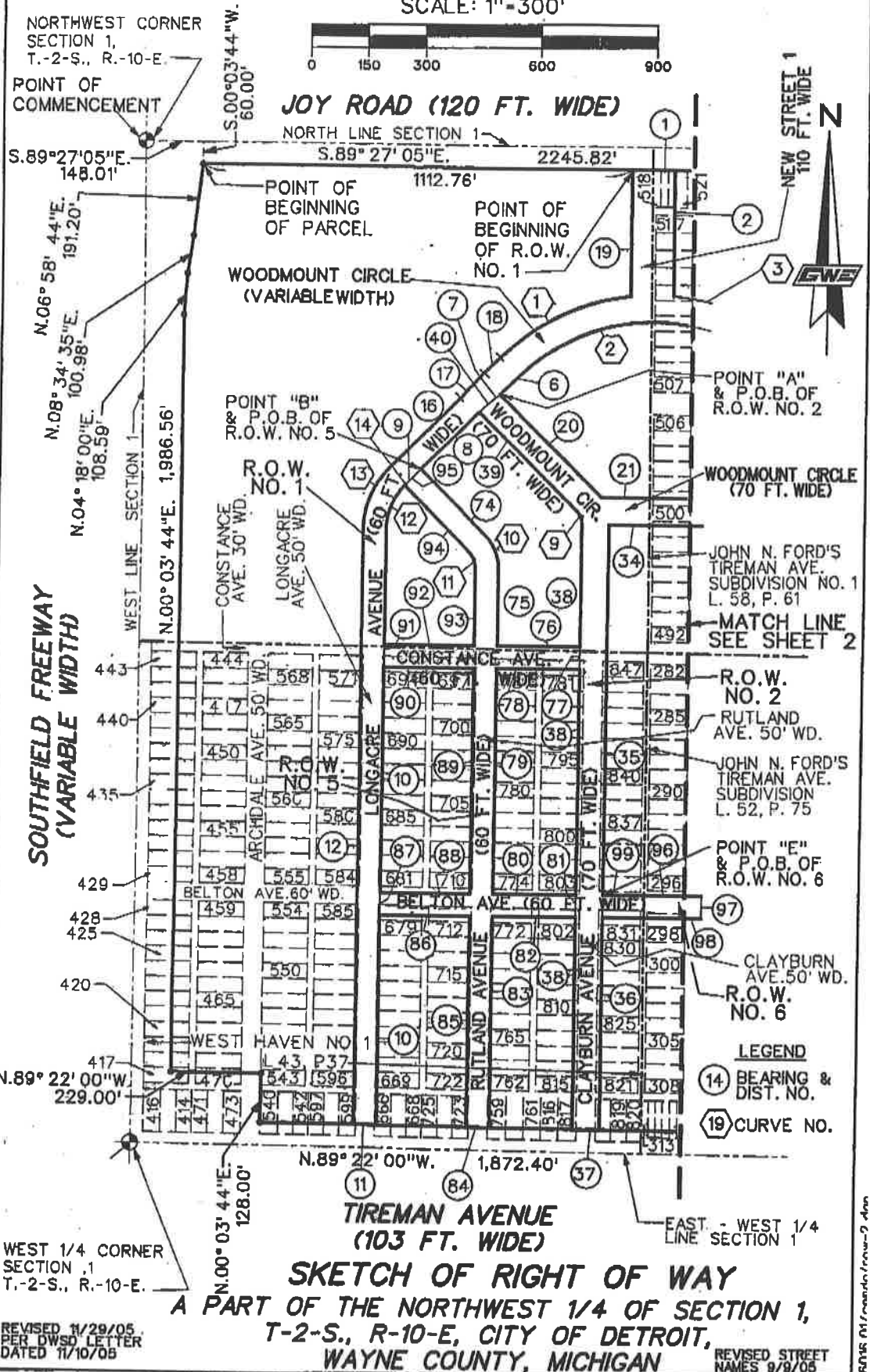
Copies	Date	No.	Description
1	11.29.05	10	8 1/2" x 14" Right of Way Sketch
1	11.29.05	5	8 1/4" x 14" Sanitary Sewer & Water Main easement
1	12.05.05	9	8 1/2" x 14" Sanitary Sewer easements

**These are transmitted as marked below:**

- For approval
- For your use
- For your review and comment
- As requested
- Approved as noted
- Approved as submitted
- Returned
- Other

**cc:** Matthew Schwanitz  
Freddie Du Bose  
Conrad Schewe  
Ray Baker  
Dan Jones  
Monica Smith

SCALE: 1"=300'



**SKETCH OF RIGHT OF WAY**  
**A PART OF THE NORTHWEST 1/4 OF SECTION 1,**  
**T-2-S., R-10-E, CITY OF DETROIT,**  
**WAYNE COUNTY, MICHIGAN**

REVISED 11/29/05  
 PER DWSD LETTER  
 DATED 11/10/05

REVISED STREET  
 NAMES 9/9/05

Copyright © 2005 Giffels-Webster Engineers, Inc.  
 All reproduction rights reserved. No part of this drawing may be reproduced without the written consent of Giffels-Webster Engineers, Inc.

**GWE**  
**Giffels-Webster Engineers, Inc.**  
 ENGINEERS LAND SURVEYORS PLANNERS LANDSCAPE ARCHITECTS  
 2871 BOND STREET, ROCHESTER HILLS, MI. 48309  
 (248) 852-3100

DATE: 1-15-05	CHECKED BY: DATE	SCALE: 1"=300'
DRAWN: A.T.W.	R.D.K. 2/05	SHEET: 1 OF 10
DESIGN:		JOB No: 15018.01
SECTION: 1	T-2-S., R-10-E.	

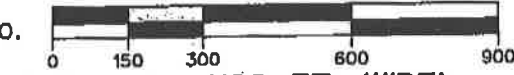
n:\survey\15018.01\roads\road-2.dwg

**LEGEND**

⑭ BEARING & DIST. NO.

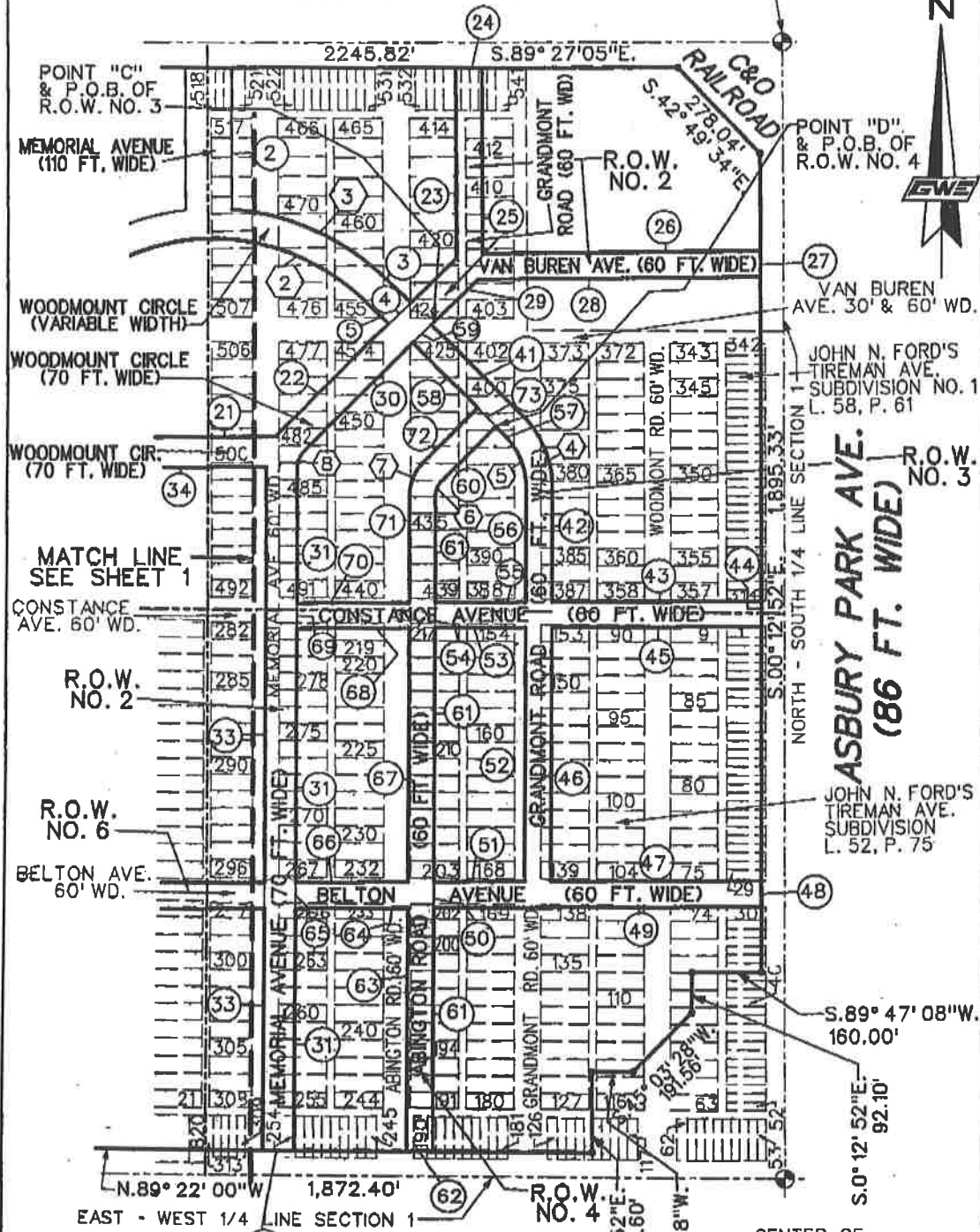
⑲ CURVE NO.

SCALE: 1"=300'



**JOY ROAD (120 FT. WIDE)**

NORTH 1/4 CORNER SECTION 1, T-2-S., R-10-E.



**SKETCH OF RIGHT OF WAY**  
**A PART OF THE NORTHWEST 1/4 OF SECTION 1,**  
**T-2-S., R-10-E, CITY OF DETROIT,**  
**WAYNE COUNTY, MICHIGAN**

REVISED STREET NAMES 9/9/05

Program 10/10/05 10:00 AM  
 No reproduction shall be made without the prior written consent of Giffels-Webster Engineers, Inc.

**GWE**  
**Giffels-Webster Engineers, Inc.**  
 ENGINEERS LAND SURVEYORS PLANNERS LANDSCAPE ARCHITECTS  
 2871 BOND STREET, ROCHESTER HILLS, MI. 48309  
 (248) 852-3100

DATE: 1-15-05	CHECKED BY: DATE	SCALE: 1"=300'
DRAWN: A.T.W.	R.D.K. 2/05	SHEET: 2 OF 10
DESIGN:		JOB No: 16016.01
SECTION: 1	T-2-S., R-10-E.	

n:/survey/16016.01/combo/row-2.dgn

BEARING AND DISTANCE TABLE		
NO.	BEARING	DISTANCE
1	S. 89° 27'05" E.	110.00'
2	DUE SOUTH	329.65'
3	S. 45° 00'00" E.	82.13'
4	S. 45° 00'00" W.	70.00'
5	N. 45° 00'00" W.	82.13'
6	S. 45° 00'00" W.	68.70'
7	S. 49° 05'08" W.	70.18'
8	S. 45° 00'00" W.	213.05'
9	S. 45° 00'00" W.	55.33'
10	DUE SOUTH	1559.55'
11	N. 89° 22'00" W.	60.00'
12	DUE NORTH	1558.89'
13	DELETED	
14	DELETED	
15	DELETED	
16	N. 45° 00'00" E.	258.38'
17	N. 41° 49'13" E.	90.14'
18	N. 45° 00'00" E.	58.70'
19	DUE NORTH	332.06'
20	S. 45° 00'00" E.	377.68'
21	DUE EAST	282.07'
22	N. 45° 00'00" E.	580.48'
23	DUE NORTH	442.85'
24	S. 89° 27'05" E.	60.00'
25	DUE SOUTH	431.77'
26	DUE EAST	639.94'
27	S. 00° 12'52" E.	60.00'
28	DUE WEST	650.67'
29	S. 45° 00'00" W.	151.23'
30	S. 45° 00'00" W.	408.54'
31	DUE SOUTH	1588.08'
32	N. 89° 22'00" W.	70.00'
33	DUE NORTH	1587.51'
34	DUE WEST	241.06'
35	DUE SOUTH	967.59'
36	DUE SOUTH	617.26'
37	N. 89° 22'00" W.	70.00'
38	DUE NORTH	1583.86'
39	N. 45° 00'00" W.	361.97'
40	N. 49° 05'08" E.	70.18"
41	S. 45° 00'00" E.	297.65'

BEARING AND DISTANCE TABLE		
NO.	BEARING	DISTANCE
42	DUE SOUTH	268.37'
43	DUE EAST	482.58'
44	S. 00° 12'52" E.	60.00'
45	DUE WEST	482.80'
46	DUE SOUTH	590.15'
47	DUE EAST	485.01'
48	S. 00° 12'52" E.	60.00'
49	DUE WEST	752.40'
50	DUE NORTH	60.00'
51	DUE EAST	207.16'
52	DUE NORTH	590.15'
53	DUE WEST	207.16'
54	DUE NORTH	60.00'
55	DUE EAST	207.16'
56	DUE NORTH	268.37'
57	N. 45° 00'00" W.	27.65'
58	N. 45° 00'00" W.	270.00'
59	N. 45° 00'00" E.	60.00'
60	S. 45° 00'00" W.	174.20'
61	DUE SOUTH	1523.91'
62	N. 89° 22'00" W.	60.00'
63	DUE NORTH	563.51'
64	DUE WEST	254.19'
65	DUE NORTH	60.00'
66	DUE EAST	254.19'
67	DUE NORTH	590.15'
68	DUE WEST	254.19'
69	DUE NORTH	60.00'
70	DUE EAST	254.19'
71	DUE NORTH	249.59'
72	N. 45° 00'00" E.	174.20'
73	S. 45° 00'00" E.	60.00'
74	S. 45° 00'00" E.	239.45'
75	DUE SOUTH	200.89'
76	DUE EAST	215.60'
77	DUE SOUTH	60.00'
78	DUE WEST	215.60'
79	DUE SOUTH	590.15'
80	DUE EAST	215.60'
81	DUE SOUTH	60.00'

**SKETCH OF RIGHT OF WAY**  
**A PART OF THE NORTHWEST 1/4 OF SECTION 1,**  
**T-2-S., R-10-E, CITY OF DETROIT,**  
**WAYNE COUNTY, MICHIGAN**

REVISED 11/29/05  
 PER DWSO LETTER  
 DATED 11/10/05

REVISED STREET  
 NAMES 9/9/05

Copyright © 2005 Giffels-Webster Engineers, Inc.  
 All rights reserved. No part of this document may be reproduced without the prior written consent of Giffels-Webster Engineers, Inc.

  
**Giffels-Webster Engineers, Inc.**  
 ENGINEERS LAND SURVEYORS PLANNERS LANDSCAPE ARCHITECTS  
 2871 BOND STREET, ROCHESTER HILLS, MI. 48309  
 (248) 852-3100

DATE: 1-15-05	CHECKED BY: R.D.K.	DATE: 2/05	SCALE: 1"=300'
DRAWN: A.T.W.			SHEET: 3 OF 10
DESIGN:			JOB No: 18016.01.
SECTION: 1	T-2-S., R-10-E.		

BEARING AND DISTANCE TABLE		
NO.	BEARING	DISTANCE
82	DUE WEST	215.60'
83	DUE SOUTH	554.10'
84	N. 89° 22'00" W.	60.00'
85	DUE NORTH	553.44'
86	DUE WEST	234.56'
87	DUE NORTH	60.00'
88	DUE EAST	234.56
89	DUE NORTH	590.15'
90	DUE WEST	234.56
91	DUE NORTH	60.00'
92	DUE EAST	234.56'
93	DUE NORTH	200.89'
94	N. 45° 00'00" W.	239.39'
95	N. 45° 00'00" E.	55.33'
96	DUE EAST	241.06'
97	DUE SOUTH	60.00'
98	DUE WEST	241.06'
99	DUE NORTH	60.00'

CURVE TABLE					
NO.	ARC	RADIUS	CENTRAL ANGLE	CHORD BEARING	CHORD
1	381.71'	565.00'	38° 42' 33"	N. 64° 21'16" E.	374.50'
2	777.54'	495.00'	90° 00' 00"	DUE WEST	700.04'
3	395.60'	565.00'	40° 07' 03"	S. 65° 03'31" E.	387.57'
4	180.64'	230.00'	45° 00' 00"	S. 22° 30'00" E.	176.03'
5	133.52'	170.00'	45° 00' 00"	N. 22° 30'00" W.	130.11'
6	39.27'	50.00'	45° 00' 00"	S. 22° 30'00" W.	38.27'
7	86.39'	110.00'	45° 00' 00"	N. 22° 30'00" E.	84.19'
8	39.27'	50.00'	45° 00' 00"	S. 22° 30'00" W.	38.27'
9	39.27'	50.00'	45° 00' 00"	N. 22° 30'00" W.	38.27'
10	97.39'	124.00'	45° 00' 00"	S. 22° 30'00" E.	94.91'
11	50.27'	64.00'	45° 00' 00"	N. 22° 30'00" W.	48.98'
12	133.52'	170.00'	45° 00' 00"	S. 22° 30'00" W.	130.11'
13	180.64'	230.00'	45° 00' 00"	N. 22° 30'00" E.	176.03'
-14	4.67'	170.00'	01° 34' 24"	N. 44° 12'48" E.	4.67'

**SKETCH OF RIGHT OF WAY**  
**A PART OF THE NORTHWEST 1/4 OF SECTION 1,**  
**T-2-S., R-10-E, CITY OF DETROIT,**  
**WAYNE COUNTY, MICHIGAN**

REVISED 11/29/05  
 PER DWSO LETTER  
 DATED 11/10/05

REVISED STREET  
 NAMES 9/9/05

Copyright © 2006 Giffels-Webster Engineers, Inc.  
 All reproduction rights reserved without the prior  
 written consent of Giffels-Webster Engineers, Inc.

 <b>Giffels-Webster Engineers, Inc.</b> ENGINEERS LAND SURVEYORS PLANNERS LANDSCAPE ARCHITECTS 2871 BOND STREET, ROCHESTER HILLS, MI. 48309 (248) 852-3100	DATE: 1-15-05	CHECKED BY: DATE	SCALE: 1"=300'
	DRAWN: A.T.W.	R.D.K. 2/05	SHEET: 4 OF 10
	DESIGN:		
	SECTION: 1	T-2-S., R-10-E.	JOB No: 16016.01


**LEGAL DESCRIPTION OF PARCEL**

A PART OF THE NORTHWEST 1/4 OF SECTION 1, T-2-S., R-10-E., CITY OF DETROIT, WAYNE COUNTY, MICHIGAN. LOTS 444 THROUGH 469 AND 543 THROUGH 596 AND LOTS 669 THROUGH 722 AND LOTS 762 THROUGH 815 AND LOTS 821 THROUGH 847 AND PART OF LOTS 417 THROUGH 443 AND PART OF LOTS 540 THROUGH 542 AND PART OF LOT 470 AND PART OF LOTS 597 THROUGH 599 AND PART OF LOTS 666 THROUGH 668 AND PART OF LOTS 723 THROUGH 725 AND PART OF LOTS 759 THROUGH 761 AND PART OF LOTS 816 THROUGH 820 OF "WEST HAVEN NO. 1" SUBDIVISION AS RECORDED IN LIBER 43, PAGE 37 OF PLATS, WAYNE COUNTY RECORDS, ALSO LOTS 72 THROUGH 113 AND LOTS 127 THROUGH 180 AND LOTS 191 THROUGH 244 AND LOTS 255 THROUGH 308 AND PART OF LOTS 1 THROUGH 37 AND PART OF LOTS 67 THROUGH 71 AND PART OF LOT 114 AND PART OF LOTS 122 THROUGH 126 AND PART OF LOTS 181 THROUGH 190 AND PART OF LOTS 245 THROUGH 254 AND PART LOTS 309 THROUGH 313 OF JOHN N. FORD'S TIREMAN AVE. SUBDIVISION AS RECORDED IN LIBER 52, PAGE 75 OF PLATS, WAYNE COUNTY RECORDS, ALSO LOTS 343 THROUGH 541 AND PART OF LOTS 314 THROUGH 542 OF JOHN N. FORD'S TIREMAN AVE. SUBDIVISION NO. 1 AS RECORDED IN LIBER 58 PAGE 61 OF PLATS, WAYNE COUNTY RECORDS ALSO THE REVERSIONARY INTEREST IN THAT PART OF VAN BUREN AVENUE 30 FEET WIDE AND 60 FEET WIDE, CONSTANCE AVENUE (30 FEET WIDE AND 60 FEET WIDE), BELTON AVENUE (60 FEET WIDE) ARCHDALE AVENUE (60 FEET WIDE), LONGACRE AVENUE (50 FEET WIDE), RUTLAND AVENUE (50 FEET WIDE), CLAYBURN (AVENUE 50 FEET WIDE), MEMORIAL AVENUE (60 FEET WIDE), ABINGTON ROAD (60 FEET WIDE), GRANDMONT ROAD (60 FEET WIDE AND 30 FEET WIDE), WOODMONT ROAD (60 FEET WIDE) AND PUBLIC ALLEY WAYS 20 FEET WIDE, 18 FEET WIDE AND 9 FEET WIDE ALL LYING WITHIN THE BOUNDS OF THE PARCEL, SAID PARCEL BEING MORE PARTICULARL DESCRIBED AS COMMENCING AT THE NORTHWEST CORNER OF SAID SECTION 1; THENCE S. 89°27'05" E., 148.01 FEET ALONG THE NORTH LINE OF SECTION 1 (JOY ROAD 120 FT. WIDE); THENCE S. 00°03'44" W., 60 FEET TO THE POINT OF BEGINNING ON THE SOUTH RIGHT OF WAY LINE OF JOY ROAD; THENCE S. 89°27'05" E., 2245.82 FEET ALONG SAID SOUTH RIGHT OF WAY LINE TO A POINT ON THE SOUTHWEST RIGHT OF WAY LINE OF THE C & O RAILROAD RIGHT OF WAY; THENCE S. 42°49'34" E., 278.04 FEET ALONG SAID SOUTHWEST RIGHT OF WAY LINE TO A POINT ON THE WEST RIGHT OF WAY LINE OF ASBURY PARK AVENUE (86 FEET WIDE); THENCE S. 00°12'52" E., 1895.33 FEET ALONG SAID WEST RIGHT OF WAY LINE; THENCE S. 89°47'08" W., 160.00 FEET; THENCE S. 00°12'52" E., 92.10 FEET; THENCE S. 45°03'28" W., 191.56 FEET; THENCE S. 89°47'08" W., 94.72 FEET; THENCE S. 00°12'52" E., 186.60 FEET TO A POINT ON THE NORTH RIGHT OF WAY LINE OF TIREMAN AVENUE (103 FEET WIDE); THENCE N. 89°22'00" W., 1872.40 FEET ALONG SAID NORTH RIGHT OF WAY LINE; THENCE N. 00°03'44" E., 128.00 FEET; THENCE N. 89°22'00" W., 229.00 FEET TO A POINT ON THE EAST RIGHT OF WAY LINE OF THE SOUTHFIELD FREEWAY (VARIABLE WIDTH) THENCE THE FOLLOWING FOUR COURSES BEING ALONG THE SAID EAST RIGHT OF WAY LINE (1) N. 00°03'44" E. 1986.56 FEET, AND (2) N. 04°18'00" E., 108.59 FEET AND (3) N. 08°34'35" E., 100.98 FEET AND (4) N. 06°58'44" E., 191.20 FEET TO THE POINT OF BEGINNING AND CONTAINING 138.04 ACRES

**SKETCH OF RIGHT OF WAY**

**A PART OF THE NORTHWEST 1/4 OF SECTION 1,  
T-2-S., R-10-E, CITY OF DETROIT,  
WAYNE COUNTY, MICHIGAN**

REVISED STREET  
NAMES 9/9/05

 <b>Giffels-Webster Engineers, Inc.</b> ENGINEERS LAND SURVEYORS PLANNERS LANDSCAPE ARCHITECTS 2871 BOND STREET, ROCHESTER HILLS, MI. 48309 (248) 852-3100	DATE: 1-15-05	CHECKED BY: DATE	SCALE:
	DRAWN: A.T.W.	R.D.K. 2/05	SHEET: 5 OF 10
	DESIGN:		
	SECTION: 1	T-2-S., R-10-E.	JOB No: 16016.01

**RIGHT OF WAY NO. 1  
MEMORIAL AVENUE, LONGACRE AVENUE  
AND PART OF WOODMOUNT CIRCLE**

A PART OF THE NORTHWEST 1/4 OF SECTION 1, T-2-S., R-10-E., CITY OF DETROIT, WAYNE COUNTY, MICHIGAN, PART OF LOT 424 AND PART OF LOTS 569 THROUGH 596 AND PART OF LOTS 599 AND 666 AND PART OF LOTS 669 THROUGH 695 OF "WEST HAVEN NO. 1" SUBDIVISION AS RECORDED IN LIBER 43, PAGE 37 OF PLATS, WAYNE COUNTY, RECORDS ALSO LOTS 512, 518 AND 519 AND PART OF LOTS 455 THROUGH 459 AND PART OF LOTS 471 THROUGH 474 AND PART OF LOT 511 AND PART OF LOTS 513 THROUGH 517 AND PART OF LOT 520 OF JOHN N. FORD'S TIREMAN AVE. SUBDIVISION NO. 1 AS RECORDED IN LIBER 58, PAGE 61 OF PLATS, WAYNE COUNTY RECORDS, ALSO THE REVERSIONARY INTEREST IN THAT PART OF VAN BUREN AVENUE (60 FEET WIDE), CONSTANCE AVENUE (60 FEET WIDE), ABINGTON AVENUE (60 FT. WIDE), MEMORIAL AVENUE (60 FT. WIDE), AND LONGACRE AVENUE (50 FT. WIDE) ALSO BENTON AVENUE (60 FEET WIDE) AND PUBLIC ALLEY WAYS 18 FEET WIDE AND 9 FEET WIDE ALL LYING WITHIN THE BOUNDS OF THE PARCEL, COMMENCING AT THE NORTHWEST CORNER OF SAID SECTION 1: THENCE S. 89°27'05" E., 148.01 FEET ALONG THE NORTH LINE OF SECTION 1 (JOY ROAD 120 FT. WIDE); THENCE S. 00°03'44" W., 60 FEET TO A POINT ON THE SOUTH RIGHT OF WAY LINE OF JOY ROAD; THENCE S. 89°27'05" E., 1112.76 FEET TO THE POINT OF BEGINNING; THENCE CONTINUING S. 89°27'05" E., 110.00 FEET ALONG SAID SOUTH RIGHT OF WAY LINE; THENCE DUE SOUTH 329.65 FEET; THENCE ON A CURVE TO THE RIGHT 395.60 FEET, SAID CURVE HAVING A RADIUS OF 565.00 FEET, CENTRAL ANGLE OF 40°07'03", AND LONG CHORD BEARING OF S. 65°03'31" E., 387.57 FEET; THENCE S. 45°00'00" E., 82.13 FEET THENCE S. 45°00'00" W., 70.00; THENCE N. 45°00'00" W., 82.13 FEET; THENCE ON A CURVE TO THE LEFT 777.54 FEET; SAID CURVE HAVING A RADIUS OF 499.00 FEET, CENTRAL ANGLE OF 90°00'00", AND LONG CHORD BEARING OF DUE WEST, 700.04 FEET; THENCE S. 45°00'00" W., 68.70 FEET TO POINT "A"; THENCE S. 49°05'08" W., 70.18 FEET; THENCE S. 45°00'00" W., 213.05 FEET TO POINT "B"; THENCE CONTINUING S. 45°00'00" W., 55.33 FEET; THENCE ON A CURVE TO THE LEFT 133.52 FEET SAID CURVE HAVING A RADIUS OF 170.00 FEET, CENTRAL ANGLE OF 45°00'00" AND LONG CHORD BEARING OF S. 22°30'00" W., 130.11 FEET; THENCE DUE SOUTH 1559.55 FEET TO A POINT ON THE NORTH RIGHT OF WAY LINE OF TIREMAN AVENUE (103 FEET WIDE); THENCE N. 89°22'00" W., 60.00 FEET ALONG SAID NORTH RIGHT OF WAY LINE; THENCE DUE NORTH 1558.89 FEET; THENCE ON A CURVE TO THE RIGHT 180.64 FEET, SAID CURVE HAVING A RADIUS OF 230.00 FEET, CENTRAL ANGLE OF 45°00'00", AND LONG CHORD BEARING OF N. 22°30'00" E., 176.03 FEET; THENCE N. 45°00'00" E., 258.38 FEET; THENCE N. 41°49'13" E., 90.14 FEET; THENCE N. 45°00'00" E., 58.70 FEET; THENCE ON A CURVE TO THE RIGHT 381.71 FEET, SAID CURVE HAVING A RADIUS OF 565.00 FEET, CENTRAL ANGLE OF 38°42'33", AND LONG CHORD BEARING OF N. 64°21'16" E., 374.50 FEET; THENCE DUE NORTH 332.06 FEET TO THE POINT OF BEGINNING.

**SKETCH OF RIGHT OF WAY**

**A PART OF THE NORTHWEST 1/4 OF SECTION 1,  
T-2-S., R-10-E., CITY OF DETROIT,  
WAYNE COUNTY, MICHIGAN**

REVISED 11/29/05  
PER DWSJ LETTER  
DATED 11/10/05

REVISED STREET  
NAMES 9/9/05

Copyright © 2005 Giffels-Webster Engineers, Inc.  
 All rights reserved. No part of this drawing may be reproduced or transmitted in any form or by any means, electronic or mechanical, including photocopying, recording, or by any information storage and retrieval system, without the prior written permission of Giffels-Webster Engineers, Inc.

**GWE**  
**Giffels-Webster Engineers, Inc.**  
 ENGINEERS LAND SURVEYORS PLANNERS LANDSCAPE ARCHITECTS  
 2871 BOND STREET, ROCHESTER HILLS, MI. 48309  
 (248) 852-3100

DATE: 1-15-05	CHECKED BY: DATE	SCALE:
DRAWN: A.T.W.	R.D.K. 2/05	SHEET: 6 OF 10
DESIGN:		JOB No: 16016.01
SECTION: 1	T-2-S., R-10-E.	

n:\surview\16016.01\cross-frames\Intframe-4

**RIGHT OF WAY NO. 2  
CLAYBURN AVENUE, VAN BUREN AVENUE AND PART OF  
GRANDMONT ROAD, WOODMOUNT CIRCLE, LONGACRE AVENUE  
AND MEMORIAL AVENUE.**


A PART OF THE NORTHWEST 1/4 OF SECTION 1, T-2-S., R-10-E., CITY OF DETROIT, WAYNE COUNTY, MICHIGAN, AND PART OF LOTS 254 THROUGH 281 OF "JOHN N. FORD'S TIREMAN AVE. SUBDIVISION" AS RECORDED IN LIBER 52, PAGE 75 OF PLATS, WAYNE COUNTY RECORDS, ALSO LOT 500, 537 AND 538 AND PART OF LOTS 404 THROUGH 425 AND PART OF LOTS 450 THROUGH 454 AND PART OF LOTS 479 THROUGH 491 AND PART OF LOTS 499, 501, 536 AND 539 OF "JOHN N. FORD'S TIREMAN AVE. SUBDIVISION NO. 1" AS RECORDED IN LIBER 58, PAGE 61 OF PLATS, WAYNE COUNTY RECORDS, ALSO OF LOTS 789 THROUGH 815 AND PART OF LOTS 817 AND 818 AND PART OF LOTS 821 THROUGH 847 OF "WEST HAVEN NO. 1" SUBDIVISION AS RECORDED IN LIBER 43, PAGE 47 OF PLATS, WAYNE COUNTY RECORDS, AND THE REVERSIONARY INTREST IN THAT PART OF ABINGTON ROAD (60 FEET WIDE), VAN BUREN AVENUE (60 FEET WIDE), BELTON AVENUE (60 FEET WIDE), CLAYBURN AVENUE (50 FEET WIDE), MEMORIAL AVENUE (60 FEET WIDE) CONSTANCE AVENUE (60 FEET WIDE), AND GRANDMONT ROAD (30 FEET WIDE) AND PUBLIC ALLEY WAYS 18 FEET WIDE LYING WITHIN THE BOUNDS OF THE PARCEL, BEGINNING AT POINT "A" AS DESCRIBED IN RIGHT OF WAY NO. 1; THENCE S. 45°00'00" E., 377.68 FEET; THENCE DUE EAST 282.07 FEET; THENCE N. 45°00'00" E., 580.48 FEET; THENCE DUE NORTH 442.85 FEET TO A POINT ON THE SOUTH RIGHT OF WAY LINE OF JOY ROAD (86 FEET WIDE); THENCE S. 89°27'05" E., 60.00 FEET ALONG SAID SOUTH RIGHT OF WAY LINE; THENCE DUE SOUTH 431.77 FEET; THENCE DUE EAST 639.94 FEET TO A POINT ON THE WEST RIGHT OF WAY LINE OF ASBURY PARK AVENUE (86 FEET WIDE); THENCE S. 00°12'52" E., 60.00 FEET ALONG SAID WEST RIGHT OF WAY LINE; THENCE DUE WEST 650.67 FEET; THENCE S. 45°00'00" W., 151.23 FEET TO POINT "C"; THENCE CONTINUING S. 45°00'00" W., 408.54 FEET; THENCE ON A CURVE TO THE LEFT 39.27 FEET, SAID CURVE HAVING A RADIUS OF 50.00 FEET, CENTRAL ANGLE OF 45°00'00", AND LONG CHORD BEARING OF S. 22°30'00" W., 38.27 FEET; THENCE DUE SOUTH 1588.08 FEET TO A POINT ON THE NORTH RIGHT OF WAY LINE OF TIREMAN AVENUE (103 FEET WIDE); THENCE N. 89°22'00" W., 70.00 FEET ALONG SAID NORTH RIGHT OF WAY LINE; THENCE DUE NORTH 1587.51 FEET; THENCE DUE WEST 241.06 FEET; THENCE DUE SOUTH 967.59 FEET TO POINT "E"; THENCE CONTINUING DUE SOUTH 617.26 FEET TO A POINT ON THE NORTH RIGHT OF WAY LINE OF TIREMAN AVENUE (103 FEET WIDE); THENCE N. 89°22'00" W., 70.00 FEET ALONG SAID NORTH RIGHT OF WAY LINE; THENCE DUE NORTH 1583.86 FEET; THENCE ON A CURVE TO THE LEFT 39.27 FEET, SAID CURVE HAVING A RADIUS OF 50.00 FEET, CENTRAL ANGLE OF 45°00'00" AND LONG CHORD BEARING OF N. 22°30'00" W., 38.27 FEET; THENCE N. 45°00'00" W., 381.97 FEET; THENCE N. 49°05'08" E., 70.18 FEET; TO THE POINT OF BEGINNING.

**SKETCH OF RIGHT OF WAY**

**A PART OF THE NORTHWEST 1/4 OF SECTION 1,  
T-2-S., R-10-E., CITY OF DETROIT,  
WAYNE COUNTY, MICHIGAN**

REVISED STREET  
NAMES 9/9/05

DRAWN BY: GIFFELS-WEBSTER ENGINEERS, INC.

 <b>Giffels-Webster Engineers, Inc.</b> ENGINEERS LAND SURVEYORS PLANNERS LANDSCAPE ARCHITECTS 2871 BOND STREET, ROCHESTER HILLS, MI. 48309 (248) 852-3100	DATE: 1-19-05	CHECKED BY: DATE	SCALE:
	DRAWN: A.T.W.	R.D.K. 2/05	SHEET: 7 OF 10
	DESIGN:		JOB No: 18016.01
	SECTION: 1	T-2-S., R-10-E.	



**RIGHT OF WAY NO. 3**

**PAER OF GRANDMONT ROAD CONSTANCE AVENUE AND BELTON AVENUE**

A PART OF THE NORTHWEST 1/4 OF SECTION 1, T-2-S., R-10-E., CITY OF DETROIT, WAYNE COUNTY, MICHIGAN, BEING PART OF LOTS 1, 30, 74, 90, 105 AND PART OF LOTS 138 THROUGH 154, AND PART OF LOTS 169, 202 AND 217 OF "JOHN N. FORD'S TIREMAN AVE. SUBDIVISION" AS RECORDED IN LIBER 52, PAGE 75 OF PLATS. WAYNE COUNTY RECORDS ALSO PART OF LOTS 378 THROUGH 387 AND PART OF LOTS 397 THROUGH 402 AND PART OF LOTS 425 THROUGH 427 OF "JOHN N. FORD'S TIREMAN AVE. SUBDIVISION NO. 1" AS RECORDED IN LIBER 58 PAGE 61 OF PLATS, WAYNE COUNTY, ALSO THE REVERSIONARY INTEREST IN THAT PART OF VAN BUREN AVENUE ( 60 FEET WIDE), GRANDMONT AVENUE (60 FT. WIDE), BELTON AVENUE (60 FEET WIDE), CONSTANCE AVENUE (60 FEET WIDE) AND WOODMONT ROAD (60 FEET WIDE) AND PUBLIC ALLEY WAYS 18 FEET WIDE LYING WITHIN THE BOUNDS OF THE PARCEL, BEGINNING AT POINT "C" AS MENTIONED RIGHT OF WAY NO. 2; THENCE S. 45° 00'00" E., 297.65 FEET; THENCE ON A CURVE TO THE RIGHT 180.64 FEET; SAID CURVE HAVING A RADIUS OF 230.00 FEET, CENTRAL ANGLE OF 45°00'00' AND LONG CHORD BEARING OF S. 22°30'00" E., 176.03 FEET; THENCE DUE SOUTH 268.37 FEET; THENCE DUE EAST 482.58 FEET TO A POINT ON THE WEST RIGHT OF WAY LINE OF ASBURY PARK AVENUE (86 FEET WIDE); THENCE S. 00°12'52" E., 60.00 FEET ALONG SAID WEST RIGHT OF WAY LINE; THENCE DUE WEST 482.80 FEET; THENCE DUE SOUTH 590.15 FEET; THENCE DUE EAST 485.01 FEET TO A POINT ON THE WEST RIGHT TO OF WAY LINE OF ASBURY PARK AVENUE (86 FEET WIDE); THENCE S. 00°12'52" E., 60.00 FEET ALONG SAID WEST RIGHT OF WAY LINE; THENCE DUE WEST 752.40 FEET; THENCE DUE NORTH 60.00 FEET; THENCE DUE EAST 207.16 FEET; THENCE DUE NORTH 590.15 FEET; THENCE DUE WEST 207.16 FEET; THENCE DUE NORTH 60.00 FEET; THENCE DUE EAST 207.16 FEET; THENCE DUE NORTH 268.37 FEET; THENCE ON A CURVE TO THE LEFT 133.52 FEET, SAID CURVE HAVING A RADIUS OF 170.00 FEET, CENTRAL ANGLE OF 45°00'00", AND LONG CHORD BEARING OF N. 22°30'00" W., 130.11 FEET; THENCE N. 45°00'00" W., 27.65 FEET TO POINT "D"; THENCE CONTINUING N. 45°00'00" W., 270.00 FEET; THENCE N. 45°00'00" E., 60.00 FEET TO THE POINT OF BEGINNING.

**SKETCH OF RIGHT OF WAY**

**A PART OF THE NORTHWEST 1/4 OF SECTION 1,  
T-2-S., R-10-E, CITY OF DETROIT,  
WAYNE COUNTY, MICHIGAN**

REVISED STREET  
NAMES 9/9/05

No reproduction shall be made without the prior written consent of Giffels-Webster Engineers, Inc.

**GWE**  
**Giffels-Webster Engineers, Inc.**  
 ENGINEERS LAND SURVEYORS PLANNERS LANDSCAPE ARCHITECTS  
 2871 BOND STREET, ROCHESTER HILLS, MI. 48309  
 (248) 852-3100

DATE: 1-15-05	CHECKED BY: DATE	SCALE:
DRAWN: A.T.W.	R.D.K. 2/05	SHEET: 8 OF 10
DESIGN:		
SECTION: 1	T-2-S., R-10-E.	JOB No: 16016.01

**RIGHT OF WAY NO. 4  
ABINGTON ROAD AND PART OF CONSTANCE AVENUE  
AND BELTON AVENUE.**

A PART OF THE NORTHWEST 1/4 OF SECTION 1, T-2-S., R-10-E., CITY OF DETROIT, WAYNE COUNTY, MICHIGAN, BEING PART OF LOTS 189 THROUGH 217 AND PART OF LOTS 218, 233, 266 AND 281 "JOHN N. FORD'S TIREMAN AVE. SUBDIVISION" AS RECORDED IN LIBER 52, PAGE 75 OF PLATS, WAYNE COUNTY RECORDS, ALSO PART OF LOTS 396 THROUGH 399 AND PART OF LOTS 429 THROUGH 439 OF "JOHN N. FORD'S TIREMAN AVE. SUBDIVISION NO. 1" AS RECORDED IN LIBER 58, PAGE 61 OF PLATS, WAYNE COUNTY, AND THE REVERSIONARY INTEREST IN THAT PART OF ABINGTON AVENUE (60 FEET WIDE), CONSTANCE AVENUE (60 FEET WIDE) AND BELTON AVENUE (60 FEET WIDE) AND PUBLIC ALLEY WAYS 18 FEET LYING WITHIN THE BOUNDS OF THE PARCEL, BEGINNING AT POINT "D" AS DESCRIBED IN RIGHT NO. 3; THENCE S. 45°00'00" W., 174.20 FEET; THENCE ON A CURVE TO THE LEFT 39.27 FEET, SAID CURVE HAVING A RADIUS OF 50.00 FEET, CENTRAL ANGLE OF 45°00'00", AND LONG CHORD BEARING OF S. 22°30'00" W., 38.27 FEET; THENCE DUE SOUTH 1923.91 FEET TO A POINT ON THE NORTH RIGHT OF WAY LINE OF TIREMAN AVENUE (103 FEET WIDE); THENCE N. 89°22'00"W, 60.00 FEET ALONG SAID NORTH RIGHT OF WAY LINE; THENCE DUE NORTH 563.51 FEET; THENCE DUE WEST 254.19 FEET; THENCE DUE NORTH 60.00 FEET; THENCE DUE EAST 254.19 FEET; THENCE DUE NORTH 590.15 FEET; THENCE DUE WEST 254.19 FEET; THENCE DUE NORTH 60.00 FEET; THENCE DUE EAST 254.19 FEET; THENCE DUE NORTH 249.59 FEET; THENCE ON A CURVE TO THE RIGHT 86.39 FEET, SAID CURVE HAVING A RADIUS OF 110.00 FEET, CENTRAL ANGLE OF 45°00'00", AND LONG CHORD BEARING OF N. 22°30'00" E., 84.19 FEET; THENCE N. 45°00'00" E., 174.20 FEET; THENCE S. 45°00'00" E., 60.00 FEET TO THE POINT OF BEGINNING

**SKETCH OF RIGHT OF WAY**

**A PART OF THE NORTHWEST 1/4 OF SECTION 1,  
T-2-S., R-10-E., CITY OF DETROIT,  
WAYNE COUNTY, MICHIGAN**

REVISED STREET  
NAMES 9/8/05

**GWE**  
Giffels-Webster Engineers, Inc.  
ENGINEERS LAND SURVEYORS PLANNERS LANDSCAPE ARCHITECTS  
2871 BOND STREET, ROCHESTER HILLS, MI. 48309  
(248) 852-3100

DATE: 1-15-05	CHECKED BY: R.D.K.	DATE: 2/05	SCALE:
DRAWN: A.T.W.			SHEET: 9 OF 10
DESIGN:			JOB No: 18018.01
SECTION: 1	T-2-S., R-10-E.		

### RIGHT OF WAY NO. 5 RUTLAND AVENUE AND PART OF CONSTANCE AVENUE AND BELTON AVENUE.

A PART OF THE NORTHWEST 1/4 OF SECTION 1, T-2-S., R-10-E., CITY OF DETROIT, WAYNE COUNTY, MICHIGAN, AND A PART OF LOT 680 AND PART OF LOTS 695 THROUGH 723, AND PART OF LOT 759 AND PART OF LOTS 762 THROUGH 789 AND PART OF LOT 804 OF "WEST HAVEN NO. 1" SUBDIVISION NO. 1" AS RECORDED IN LIBER 43, PAGE 37 OF PLATS, WAYNE COUNTY, AND THE REVERSIONARY INTEREST IN THAT PART OF CONSTANCE AVENUE (60 FEET WIDE), RUTLAND AVENUE (50 FEET WIDE ), BELTON AVENUE (60 FEET WIDE) AND PUBLIC ALLEY WAYS 18 FEET WIDE LYING WITHIN THE BOUNDS OF THE PARCEL, BEGINNING AT POINT "B" AS DESCRIBED IN RIGHT OF WAY NO. 1; THENCE S. 45°00'00" E., 239.45 FEET; THENCE ON A CURVE TO THE RIGHT 97.39 FEET, SAID CURVE HAVING A RADIUS OF 124.00 FEET, CENTRAL ANGLE OF 45°00'00" AND LONG CHORD BEARING OF S. 22°30'00" E., 94.91 FEET; THENCE DUE SOUTH 200.89 FEET; THENCE DUE EAST 215.60 FEET; DUE SOUTH 60.00 FEET; THENCE DUE WEST 215.60 FEET; THENCE DUE SOUTH 590.15 FEET; THENCE DUE EAST 215.60 FEET; THENCE DUE SOUTH 60.00 FEET; THENCE DUE WEST 215.60 FEET; THENCE DUE SOUTH 554.10 FEET; TO A POINT ON THE NORTH RIGHT OF WAY LINE OF TIREMAN AVENUE (103 FEET WIDE); THENCE N. 89°22'00" W., 60.00 FEET ALONG THE SAID NORTH RIGHT OF WAY LINE; THENCE DUE NORTH 553.44 FEET; THENCE DUE WEST 234.56 FEET; THENCE DUE NORTH 60.00 FEET; THENCE DUE EAST 234.56 FEET; THENCE DUE NORTH 590.15 FEET; THENCE DUE WEST 234.56 FEET; THENCE DUE NORTH 60.00 FEET; THENCE DUE EAST 234.56 FEET; THENCE DUE NORTH 200.89 FEET; THENCE ON A CURVE TO THE LEFT 50.27 FEET, SAID CURVE HAVING A RADIUS OF 64.00 FEET, CENTRAL ANGLE OF 45°00'00" AND LONG CHORD BEARING OF N. 22°30'00" W., 48.98 FEET; THENCE N. 45°00'00" W., 239.39 FEET; THENCE ON A CURVE TO THE RIGHT 4.67 FEET, SAID CURVE HAVING A RADIUS OF 170.00 FEET, CENTRAL ANGLE OF 01°34'24" AND LONG CHORD BEARING OF N 44°12'48" E., 4.67 FEET; THENCE N. 45°00'00" E., 55.33 FEET TO THE POINT OF BEGINNING.

### RIGHT OF WAY NO. 6 PART OF BELTON AVENUE.

A PART OF THE NORTHWEST 1/4 OF SECTION 1, T-2-S., R-10-E., CITY OF DETROIT, WAYNE COUNTY, MICHIGAN, BEING A PART OF LOT 832 "WEST HAVEN NO. 1" SUBDIVISION AS RECORDED IN LIBER 43, PAGE 37 OF PLATS, WAYNE COUNTY, AND PART OF LOT 297 OF JOHN N. FORD' TIREMAN AVE. SUBDIVISION, AS RECORDED IN LIBER 52 PAGE 75 OF PLATS, WAYNE COUNTY RECORDS AND THE REVERSIONARY INTEREST IN THAT PART OF BELTON AVENUE (60 FEET WIDE), MEMORIAL AVENUE (60 FEET WIDE) AND PUBLIC ALLEY WAYS 18 FEET WIDE LYING WITHIN THE BOUNDS OF THE PARCEL, BEGINNING AT POINT "E" AS DESCRIBED IN RIGHT OF WAY NO. 2; THENCE DUE EAST 241.06 FEET; THENCE DUE SOUTH 60.00 FEET; THENCE DUE WEST 241.06 FEET; THENCE DUE NORTH 60.00 FEET TO THE POINT OF BEGINNING.

### SKETCH OF RIGHT OF WAY

A PART OF THE NORTHWEST 1/4 OF SECTION 1,  
T-2-S., R-10-E, CITY OF DETROIT,  
WAYNE COUNTY, MICHIGAN

REVISED STREET  
NAMES 9/9/05

Copyright © 2005 Giffels-Webster Engineers, Inc.  
No reproduction or other use without the prior  
written consent of Giffels-Webster Engineers, Inc.

**GWE**  
Giffels-Webster Engineers, Inc.  
ENGINEERS LAND SURVEYORS PLANNERS LANDSCAPE ARCHITECTS  
2871 BOND STREET, ROCHESTER HILLS, MI. 48309  
(248) 952-5100

DATE: 1-15-05	CHECKED BY DATE	SCALE:
DRAWN: A.T.W.	R.D.K. 2/05	SHEET: 10 OF 10
DESIGN:		JOB No: 18018..01
SECTION: 1	T-2-S., R-10-E.	

March 20, 2007

Honorable City Council:

RE: Petition No. 847 – Detroit Housing Commission (DHC), request permanent vacation of streets and existing rights-of-way, dedication of proposed streets, and the naming of the new proposed streets for the Gardenview Estates Development Project (formerly Herman Gardens) to the City of Detroit.

Petition No. 847 of “Detroit Housing Commission (DHC)” request outright vacation of certain public rights-of-way, the dedication of New Streets, and the naming of the new streets (within the formerly Herman Gardens) in the area of Joy Road, 120 feet wide, Tireman Avenue, 103 feet wide, Southfield Freeway, and Asbury Park Avenue, 86 feet wide. This is to facilitate the construction of the Gardenview Estates Development Project (formerly Herman Gardens).

The new-dedicated public streets and naming of the new streets were approved by the City Engineering Division (CED) DPW/Street Design Bureau and the Traffic Engineering Division – DPW. The petition was referred to the City Engineering Division – DPW for investigation (utility review) and report. This is our report.

The Detroit Water and Sewerage Department (DWSD) reports no objection provided that the new water mains and sewers are constructed for the project and satisfactory easements are granted to the city for the water mains and sewers.

The Public Lighting Department (PLD) reports there are three options for the existing PLD facilities in Grandmont Avenue. 1) If the project requires the vacation of all PLD facilities from Grandmont, then an underground reroute around the perimeter of the project is necessary. The estimated cost for this reroute is \$3,000,000.00. 2) If the project requires the relocation of the two primary distribution cable poles on Grandmont Avenue and PLD is given an underground easement in Grandmont Avenue. In this case, our estimated cost for relocating the two cable poles will be \$50,000.00. This option is contingent upon two factors; first, that PLD is allowed to relocate the two poles within the southwest quadrant of Joy Road and Grandmont Avenue. Secondly, PLD must have 24-hour heavy truck access to our facilities in Grandmont for their maintenance. 3) The PLD can have an easement in Grandson Avenue, and the above-referenced access for maintenance, and the two cable poles are allowed to remain in their present location. We have no cost associated with this option. Also, this petition does not address the southeast area of the project site, near the Herman School. PLD requires an easement for our existing conduit, cables, pad mount equipment and manholes that feed the Herman School. We require uninterrupted, 24-hour, heavy truck access in this easement.

AT&T Communication reports that rerouting buried cable under Belton Avenue, Van Buren Avenue, Abington Road and Grandmont. Please notify Customer Growth Group.

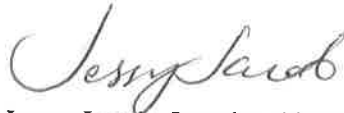
DTE Energy Gas Division reports no objection to the vacation and dedication of the public right-of-way within the Herman Gardens area. DTE have a 4-inch steel gas main within Abington Avenue. The estimated cost of abandoning such service is \$2,335.65.

City Council is requested to accept the deed for the land for public purposes; provided said property complies with the requirements of Detroit codes and ordinance No. 29-94; Detroit Code Sections 2-1-11 through 2-1-15 also known as the "Environmental Review Guidelines", and that the fee owner submit a properly executed "warranty" deed; proof of lien-free ownership; proof of paid Wayne County Taxes and proof of paid Detroit property taxes. The new public rights-of-way must be constructed to City Engineering Division – DPW specifications

All other city departments and privately owned utility companies have no objections to the requested vacation and dedication of the public rights-of-way.

An appropriate resolution is attached for consideration by your Honorable Body.

Respectfully submitted,



Jessy Jacob, Interim City Engineer  
City Engineering Division – DPW

NRP\

cc: Cathy Square, Director – DPW  
Mayor's Office – Kandia Milton, City Council Liaison

BY COUNCIL MEMBER \_\_\_\_\_

RESOLVED, All that part of the public rights-of-way in the block bounded by Joy Road, 120 feet wide, Tireman Avenue, 103 feet wide, Asbury Park Avenue, 86 feet wide, and Southfield Freeway being described as a part of the Northwest  $\frac{1}{4}$  of Section 1, T.2S.,R.10E., City of Detroit, Wayne County, being more particularly described as commencing at the Northwest corner of said section; Thence South  $89^{\circ}27'05''$  East, 148.01 feet along the North line of Section 1 (Joy Road 120 feet wide); Thence South  $00^{\circ}03'44''$  West, 60 feet to the Point of Beginning on the South Right of Way Line of Joy Road 120 feet wide; Thence South  $89^{\circ}27'05''$  East, 2245.82 feet along said South right-of-way line to a point on the Southwest right-of-way of The C&O Railroad right-of-way; Thence South  $42^{\circ}49'34''$ , 278.04 feet along said Southwest right-of-way line to a point on the West right-of-way line of Asbury Park Avenue, 86 feet wide,; Thence South  $00^{\circ}12'52''$  East, 1895.33 feet along said West right-of-way line; Thence South  $89^{\circ}47'08''$  West, 160.00 feet; Thence South  $00^{\circ}12'52''$  East, 92.10 feet; Thence South  $45^{\circ}03'28''$  West, 191.56 feet; Thence South  $89^{\circ}47'08''$  West, 94.72 feet; Thence South  $00^{\circ}12'52''$  East, 186.60 feet to a point on the North Right of Way line of Tireman Avenue, 103 feet wide; Thence North  $89^{\circ}22'00''$  West, 1872.40 feet along said North right-of-way line; Thence North  $00^{\circ}03'44''$  East, 128.00 feet; Thence North  $89^{\circ}22'00''$  West, 229.00 feet to a point on the East right-of-way line of the Southfield Freeway; Thence the following Four Courses being along the said East right-of-way line (1) North  $00^{\circ}03'44''$  East, 1986.56 feet and (2) North  $04^{\circ}18'00''$  East, 108.59 feet and (3) North  $08^{\circ}34'35''$  East, 100.98 feet and (4) North  $06^{\circ}58'44''$  East, 191.20 feet to the Point of Beginning and containing 138.04 acres;

Be and the same is hereby vacated (outright) as public rights-of-way to become part and parcel of the abutting property, subject to the following provisions;

Provided, that in order to vacate the existing roads and construct the proposed new roads it is necessary to construct new water mains and sewers to service the project; and be it further

Provided, that the Detroit Water and Sewerage Department be and is hereby authorized to review the drawings for the proposed water mains and sewers for the project; and be it further

Provided, that the plans for the water mains and sewers shall be prepared by a Registered Engineer; and be it further

Provided, that the entire work is to be performed in accordance with plans and specifications approved by the Detroit Water and Sewerage Department, and constructed subject to the inspection and approval of the Detroit Water and Sewerage Department; and be it further

Provided, that the Petitioner shall grant to the City a satisfactory easement for the water mains and sewers before the start of construction; and be it further

Provided, that the Board of Water Commissioners shall accept and execute the easement grant on behalf of the City; and be it further

Provided, that the petitioner shall provide the Detroit Water and Sewerage Department with as-built drawings of the water mains and sewers; and be it further

Provided, that upon satisfactory completion of the water main and sewer construction, the water mains and sewers shall be City property and become part of the City system; and be it further

Provided, that all satisfactory arrangements are made with the necessary utility companies; and be it further

RESOLVED, The following Gardenview Estate Development (Formerly the Herman Garden) properties, which may include various public rights-of-way, are hereby dedicated for public street purposes;

1. **New Roadway Dedication; Right-of-Way No. 1;** A part of the Northwest  $\frac{1}{4}$  of Section 1, T.2S., R.10E., City of Detroit, Wayne County, Michigan, Part of Lot 424 and part of Lots 569 Through 596 and part of Lots 599 and 666 and part of Lots 669 through 695 of "West Haven No. 1" Subdivision as recorded in Liber 43, Page 37 of Plats, Wayne County, Records also Lots 512, 518, and 519 and part 519 and part of Lots 455 through 459 and part of Lots 471 through 474 and part of Lot 511 and part of Lots 513 through 517 and part of Lot 520 of John N. Ford's Tireman Avenue Subdivision No.1 as recorded in Liber 58, Page 61 of Plats, Wayne County Records, Also the reversionary interest in that part of Van Buren Avenue (60 feet wide), Constance Avenue (60 feet wide), Abington Avenue (60 feet wide), Memorial Avenue (60 feet wide), and Longacre Avenue (50 feet wide) also Benton Avenue (60 feet wide) and public alley ways 18 feet wide and 9 feet wide all lying within the bounds of the parcel, commencing at the Northwest corner of said Section 1, Thence South  $89^{\circ}27'05''$  East, 148.01 feet along the North Line of Section 1 (Joy Road 120 feet wide); Thence South  $00^{\circ}03'44''$  West, 60 feet to a point on the South right of way line of Joy Road; Thence South  $89^{\circ}27'05''$  East 1112.76 feet to the Point of Beginning; Thence continuing South  $89^{\circ}27'05''$  East, 110.00 feet along said South right-of-way line; Thence due South 329.65 feet; Thence on a curve to the right 395.60 feet, said curve having a radius of 565.00 feet, central angle of the  $40^{\circ}07'03''$  and Long Chord bearing of South  $65^{\circ}03'31''$  East 387.57; Thence South  $45^{\circ}00'00''$  east, 82.13 feet; Thence on a curve to the left 777.54 feet; said curve having a radius of 495.00 feet, Central Angel of  $90^{\circ}00'00''$ , and long chord bearing of due West 700.04 feet; Thence South  $45^{\circ}00'00''$  West, 68.70 feet to a point "A"; Thence south  $49^{\circ}05'08''$  West, 70.18 feet; Thence South  $45^{\circ}00'00''$  West, 213.05 feet to point "B"; Thence continuing South  $45^{\circ}00'00''$  West, 55.33 feet; Thence on a curve to the left 133.52 feet said curve having a radius of 170.00 feet, central angle of  $45^{\circ}00'00''$  and long chord bearing of South  $22^{\circ}30'00''$  West, 130.11 feet; Thence due South 1559.55 feet to a point on the North right-of-way line of Tireman Avenue, 103 feet wide; Thence North  $89^{\circ}22'00''$  West, 60.00 feet along said North right-of-way line; Thence

due North 1558.89 feet; Thence on a curve to the right 180.64 feet, said curve having a radius of 230.00 feet, central angle of  $45^{\circ}00'00''$ , and long chord bearing of North  $22^{\circ}30'00''$  East, 176.03 feet; Thence North  $45^{\circ}00'00''$  East, 258.38 feet; Thence North  $41^{\circ}49'13''$  East, 90.14 feet; Thence North  $45^{\circ}00'00''$  East, 58.70 feet; Thence on a curve to the right 381.71 feet, said curve having a radius of 565.00 feet, central angle of  $38^{\circ}42'33''$  and long chord bearing of North  $64^{\circ}$  East, 374.50 feet; Thence due North 332.06 feet to the Point of Beginning;

2. **New Roadway Dedication; Right-of-Way No. 2:** A part of the Northwest  $\frac{1}{4}$  of Section 1, T.2S., R.10E., City of Detroit, Wayne County, Michigan, and part of Lots 254 through 281 of "John N. Ford's Tireman Avenue Subdivision" as recorded in Liber 52, Page 75 of Plats, Wayne County Records, also Lot 500, 537, and 538 and part of Lots 404 through 425 and part of Lots 450 through 454 and part of Lots 479 through 491 and part of Lots 499, 501, 536, and 539 of "John N. Ford's Tireman Avenue Subdivision No.1" as recorded in Liber 58, Page 61 of Plats, Wayne County Records, Also of Lots 789 through 815 and part of Lots 817 and 818 and part of Lots 821 through 847 of "West Haven No.1" Subdivision as recorded in Liber 43, Page 47 of Plats, Wayne County Records, and the reversionary interest in that part of Abington Avenue, 60 feet wide, Clayburn Avenue, 50 feet wide, Memorial Avenue, 60 feet wide, Constance Avenue, 60 feet wide, and Grandmont Avenue, 30 feet wide, and public alley ways 18 feet wide lying within the bounds of the parcel, Beginning at Point "A" as described in right-of-way No.1; Thence South  $45^{\circ}00'00''$  East, 377.68 feet; Thence due East 282.07 feet; Thence North  $45^{\circ}00'00''$  East 580.48 feet; Thence due North 442.85 feet to a point on the South right-of-way line of Joy Road, 86 feet,; Thence South  $89^{\circ}27'05''$  East, 60.00 feet along said south right-of-way line; Thence due South 431.77 feet; Thence due East 639.94 feet to a point on the West right-of-way line of Asbury Park Avenue, 86 feet wide; Thence South  $00^{\circ}12'52''$  East, 60.00 feet along said West right-of-way line; Thence due West 650.67 feet; Thence South  $45^{\circ}00'00''$  West, 151.23 feet to Point "C"; Thence continuing South  $45^{\circ}00'00''$  West, 408.54 feet; Thence on a curve to the left 39.27 feet, said curve having a radius of 50.00 feet, central angle of  $45^{\circ}$  and long chord bearing of South  $22^{\circ}30'00''$  West, 38.27 feet; Thence due South 1588.08 feet to a point on the North right-of-way line of Tireman Avenue, 103 feet wide; Thence North  $89^{\circ}22'00''$  West, 70.00 feet along said North right-of-way line; Thence due North 1587.51 feet; Thence due West 241.06 feet; Thence due South 967.59 feet to Point "E"; thence continuing due South 617.26 feet to a point on the North right-of-way line of Tireman Avenue, 103 feet wide; Thence North  $89^{\circ}22'00''$  West, 70.00 feet along said North right-of-way line; Thence due North 1583.86 feet; Thence on a curve to the left 39.27 feet, said curve having a radius of 50.00 feet, central angle of  $45^{\circ}00'00''$  and long chord bearing of North  $22^{\circ}30'00''$  West, 38.27 feet; Thence North  $45^{\circ}00'00''$  West, 361.97 feet; thence North  $49^{\circ}05'08''$  East, 70.18 feet; to the Point of Beginning;



3. **New Roadway Dedication; Right-of-Way No. 3:** A part of the Northwest  $\frac{1}{4}$  of Section 1, T.2S., R.10E., City of Detroit, Wayne County, Michigan, being part of Lots 1, 30, 74, 90, 105 and part of Lots 138 through 154, and part of Lots 169, 202 and 217 of "John N. Ford's Tireman Avenue Subdivision" as recorded in Liber 52, Page 75 of Plats, Wayne County Records also part of Lots 425 through 427 of "John N. Ford's Tireman Avenue Subdivision No. 1" as recorded in Liber 58 Page 61 of Plats, Wayne County, also the reversionary interest in that part of Van Buren Avenue, 60 feet wide, Grandmont Avenue, 60 feet wide, Belton Avenue, 60 feet wide, Constance Avenue, 60 feet wide, and Woodmont Road, 60 feet wide, and public alley ways, 18 feet wide lying within the bounds of the parcel, beginning at point "C" as mentioned right-of-way No. 2; Thence South  $45^{\circ}00'00''$  East, 297.65 feet; thence on a curve to the right 180.64 feet; said curve having a radius of 230.00 feet, central angle of  $45^{\circ}$  and long chord bearing of South  $22^{\circ}30'00''$  East, 176.03 feet; thence due South 268.37 feet; thence due East 482.58 feet to a point on the West right-of-way line of Asbury Park Avenue, 86 feet wide; thence South  $00^{\circ}12'52''$  East, 60.00 feet along said West right-of-way line; thence due West 482.80 feet; thence due South 590.15 feet; thence due East 485.01 feet to a point on the West right-of-way line of Asbury Park Avenue, 86 feet wide; thence South  $00^{\circ}12'52''$  East, 60 feet along said West right-of-way line; thence due West 752.40 feet; thence due North 60.00 feet; thence due East 207.16 feet; thence due North 590.15 feet; thence due West 207.16 feet; thence due North 60.00 feet; thence due East 207.16 feet; thence due North 268.37 feet; thence on a curve to the left 133.52 feet, said curve having a radius of 170.00 feet, central angle of  $45^{\circ}00'00''$ , and long chord bearing of North  $22^{\circ}30'00''$  West, 130.11 feet; thence North  $45^{\circ}00'00''$  West, 27.65 feet to Point "D"; thence continuing North  $45^{\circ}00'00''$  West, 270.00 feet; thence  $45^{\circ}00'00''$  East, 60.00 feet to the Point of Beginning;
4. **New Roadway Dedication; Right-of-Way No. 4:** A part of the Northwest  $\frac{1}{4}$  section 1, T.2S., R.10E., City of Detroit, Wayne County, Michigan, being part of Lots 189 through 217 and part of Lots 218, 233, 266, and 281 "John N. Ford's Tireman Avenue Subdivision" as recorded in Liber 52, Page 75 of Plats, Wayne County Records, also part of Lots 396 through 399 and part of Lots 429 through 439 of "John N. Ford's Tireman Avenue Subdivision No.1" as recorded in Liber 58, Page 61 of Plats, Wayne County, and the reversionary interest in that part of Abington Avenue, 60 feet wide, Constance Avenue, 60 feet wide, and Belton Avenue, 60 feet, and public alley ways 18 feet lying within the bounds of the parcel, beginning at point "D" as described in right-of-way no.3; thence South  $45^{\circ}00'00''$  West, 174.20 feet; thence on a curve to the left 39.27 feet, said curve having a radius of 50 feet, central angle of  $45^{\circ}00'00''$ , and a long chord bearing of South  $22^{\circ}30'00''$  West, 38.27 feet; thence due South 1523.91 feet to a point on the North right-of-way line of Tireman Avenue, 103 feet wide; thence North  $89^{\circ}22'00''$  West, 60 feet along said North right-of-way line; thence due North 563.51 feet; thence due West 254.19 feet; thence due North 60.00 feet; thence due East 254.19 feet; thence due North 590.15 feet; thence due West 254.19 feet; thence due North 60.00 feet; thence due East 254.19 feet; thence due North 249.59 feet; thence on a curve to the right 86.39 feet, said curve having a radius of 110.00 feet, central angle of  $45^{\circ}00'00''$ , and a long chord bearing of North

22°30'00" East, 84.19 feet; thence North 45°00'00" East, 174.20 feet; thence South 45°00'00" East, 60.00 feet to the Point of Beginning;

5. **New Roadway Dedication; Right-of-Way No. 5:** A part of the Northwest ¼ Section 1, T.2S., R.10E., City of Detroit, Wayne County, Michigan, and a part of the Lot 680 and part of Lots 695 through 723, and part of Lot 759 and part of Lots 762 through 789 and part of Lot 804 of "West Haven No.1" Subdivision No.1 as recorded in Liber 43, page 37 of Plats, Wayne County, and the reversionary interest in that part of Constance Avenue, 60 feet wide, Rutland Avenue, 50 feet wide, Belton Avenue, 60 feet wide and the public alley ways 18 feet wide lying within the bounds of the parcel, Beginning at Point "B" as described in Right-of-way No. 1; thence South 45°00'00" East, 239.45 feet; thence on a curve to the right 97.39 feet, said curve having a radius of 124.00 feet, central angle of 45°00'00" and a long chord bearing of South 22°30'00" East. 94.91 feet; thence due South 200.89 feet; thence due East 215.60 feet; thence due south 60.00 feet; thence due West 215.60 feet; thence due South 590.15 feet; thence due East 215.60 feet; thence due South 60.00 feet; thence due West 215.60; thence due South 554.10 feet; to a point on the North right-of-way line of Tireman Avenue, 103 feet wide; thence North 89°22'00" West, 60 .00 feet along the said North right-of-way line; thence due North 553.44 feet; thence due West 234.56 feet; thence due North 60.00 feet; thence due East 234.56 feet; thence due North 590.15 feet; thence due West 234.56 feet; thence due North 60.00 feet; thence due East 234.56 feet; thence due North 200.89 feet; thence on a curve to the left 50.27 feet, said curve having a radius of 64.00 feet, central angle of 45°00'00" and a long chord bearing of North 22°30'00" West, 48.98 feet; thence North 45°00'00" West 239.39 feet; thence on a curve to the right 4.67 feet, said curve having a radius of 170.00 feet, central angle of 01°34'24" and a long chord bearing of North 44°12'48" East, 4.67 feet; thence North 45°00'00" East, 55.33 feet to the Point of Beginning.
6. **New Roadway Dedication; Right-of-Way No. 6:** A part of the Northwest ¼ of Section 1, T.2S., R.10E., City of Detroit, Wayne County, Michigan, being a part of Lot 832 "West Haven No. 1 Subdivision" as recorded in Liber 43, Page 37 of Plats, Wayne County, and Part of Lot 297 of John N. Ford's Tireman Avenue Subdivision, as recorded in Liber 52, Page 75 of Plats, Wayne County Records and the reversionary interest in that part of Belton Avenue, 60 feet wide, Memorial Avenue, 60 feet wide, and public alley ways 18 feet wide lying within the bounds of the parcel, Beginning at Point "E" as described in Right-of-way No.2; thence due East 241.06 feet; thence due South 60.00 feet; thence due West 241.06 feet; thence due North 60.00 feet to the Point of Beginning.

RESOLVED, That Ten New public street rights-of-way, dedicated (roadways) in this resolution, are hereby named as follows:

1. "Longacre Avenue" – being a North – South street, 60 feet wide, (between Tireman and (New) Gardenview Circle); also

2. "Rutland Avenue" - being a North – South street, 60 feet wide, (between Tireman and Longacre Avenues); also
3. "Clayburn Avenue" - being a North – South street, 60 feet wide, (between Tireman Avenue and (New) Gardenview Circle); also
4. "Memorial Avenue" - being a North – South street, 60 feet wide, (between Tireman Avenue and (New) Gardenview Circle), and 110 feet wide (between (New) Gardenview Circle and Joy Road Avenue); also
5. "Abington Avenue" - being a North – South street, 60 feet wide, (between Tireman and Grandmont Avenues); also
6. "Grandmont Avenue" – being a North – South street, 60 feet wide, (between Belton and Joy Road Avenues); also
7. "Van Buren Avenue" – being a East – West street, 60 feet wide, (between Grandmont and Asbury Park Avenues); also
8. "Constance Avenue" – being a East – West street, 60 feet wide, (between Longacre and Asbury Park Avenues); also
9. "Belton Avenue" – being a East – West street, 60 feet wide, (between Longacre and Asbury Park Avenues); also
10. "Gardenview Circle" – being a Circular street 70 feet wide, (between Grandmont and Longacre Avenues)

PROVIDED, That all taxes with respect to property of which the Dedication Area is a part shall be paid and proof thereof furnished to the Law Department; and

PROVIDED, That proof of compliance with Detroit Ordinance No. 29-94, Detroit Code Sections 2-1-11 through 2-1-15 also known as the Environmental Review Guidelines, is furnished to the Law Department; and

PROVIDED, The streets are built to City of Detroit standard specifications, under City Engineering Division – DPW permits and inspection, with plans review and approved by the City Engineering Division – DPW, Street Design Bureau and Traffic Engineering Division – DPW; and

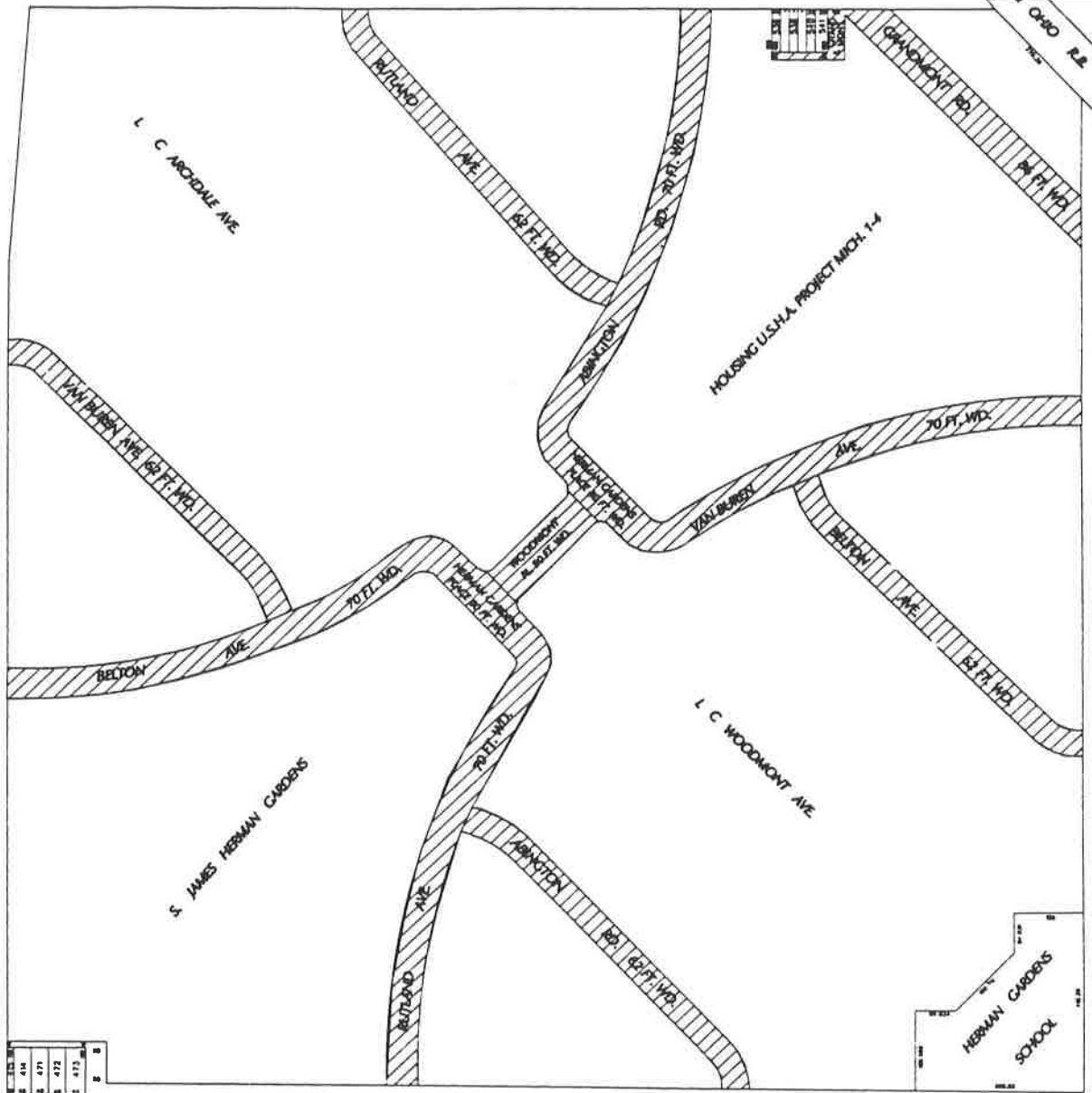
PROVIDED, That the City Clerk shall within 30 days records a certified copy of this resolution with the Wayne County Register of Deeds.

PETITION NO. 847  
 DETROIT HOUSING COMMISSION (DHC)  
 1231 SELDEN - STE. 108  
 DETROIT, MI 48201  
 c/o MONICA R. SMITH  
 PROJECT COORDINATOR  
 PHONE NO. 313-833-1018



JOY ROAD 120 FT.WD.

SOUTHFIELD FREEWAY



ASBURY PARK 86 FT.WD.

TIREMAN 103 FT.WD.

- REQUESTED OUTRIGHT VACATION

\*\*\*NOTE: PLEASE SEE ATTACHED DRAWINGS FOR DEDICATION OF STREETS

CARTO 99B

(FOR OFFICE USE ONLY)

B					
A					
DESCRIPTION	DRWN	CHEK	APPD	DATE	
REVISIONS					
DRAWN BY	NP	CHECKED			
DATE	9-7-06	APPROVED			

REQUESTED TO OUTRIGHT VACATED CERTAIN RIGHTS-OF-WAY IN THE AREA OF JOY, TIREMAN, ASBURY PARK, AND SOUTHFIELD FWY.; ALSO THE DEDICATION OF LAND FOR NEW STREETS.

CITY OF DETROIT  
 CITY ENGINEERING DEPARTMENT  
 SURVEY BUREAU  
 JOB NO. 01-01  
 DRWG. NO. x847.dgn

FOR NEW STREET NAMES ONLY

