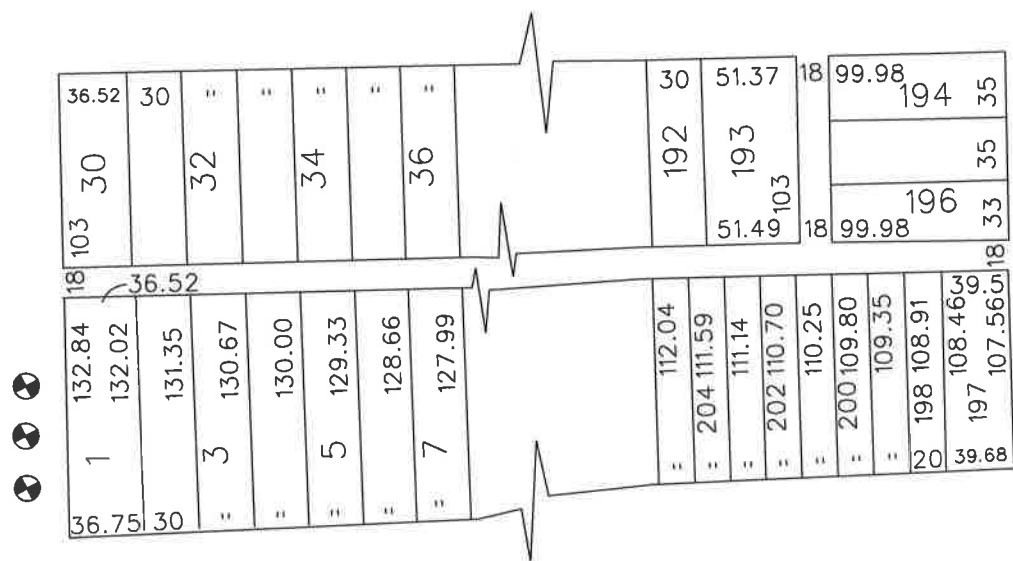


PETITION NO. 4285
 DELTA ENVIRONMENTAL CONSLT.
 39810 GRAND RIVER - STE. C-100
 NOVI, MI 48375
 c/o WENDY E. BAYLESS
 PHONE NO. 1-248-699-0240



EDGEVALE 50 FT. WD.

JOHN R. 66 FT. WD.



E. McNICHOLS 66 FT. WD.

BRUSH 50 FT. WD.

 - AREA OF ENCROACHMENT(S)
 (WITH MONITORING WELLS)

(FOR OFFICE USE ONLY)

CARTO 36 E

B					
	A				
DESCRIPTION		DRWN	CHKD	APPD	DATE
REVISIONS					
DRAWN BY	NP	CHECKED			
DATE	1-12-06	APPROVED			

REQUESTED TO ENCROACH INTO JOHN R. WITH
 THREE (3) MONITORING WELLS BETWEEN
 EDGEVALE AND E. McNICHOLS.

CITY OF DETROIT	
CITY ENGINEERING DEPARTMENT	
SURVEY BUREAU	
JOB NO.	01-01
DRWG. NO.	x4285.dgn