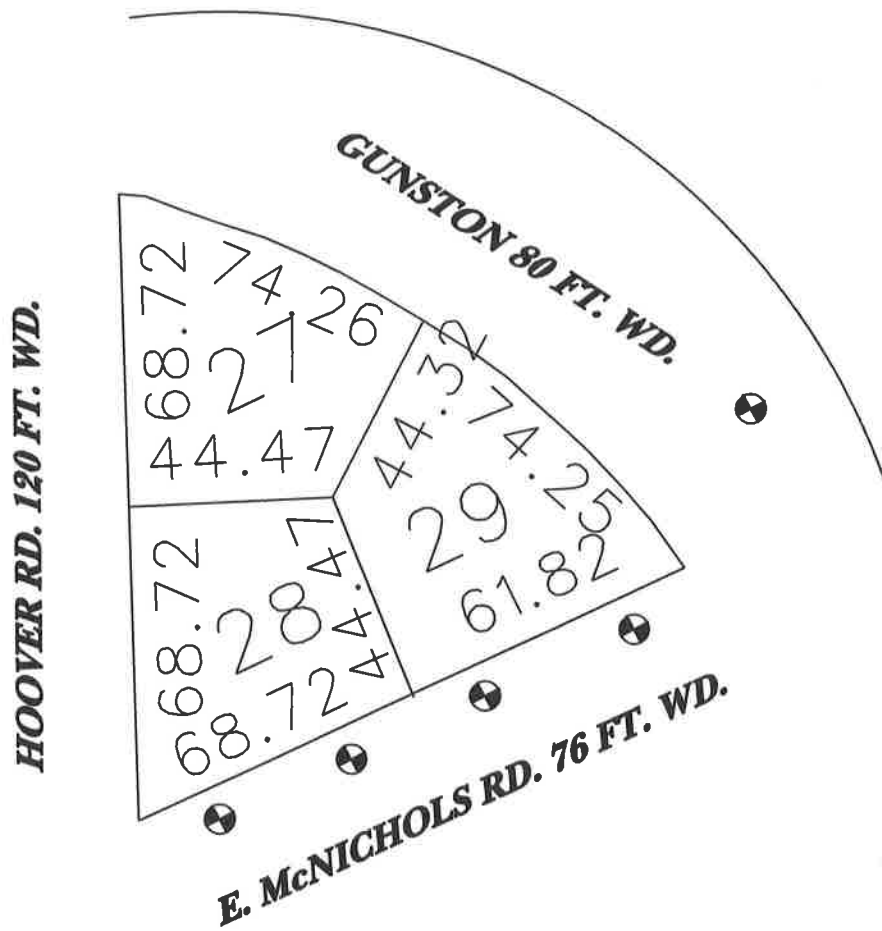


**PETITION NO. 190**  
**DELTA ENVIRONMENTAL CONSULTANTS, INC.**  
**39810 GRAND RIVER- SUITE C-100**  
**NOVI, MI 48375 USA**  
**c/o WENDY E. BAYLESS**  
**PHONE NO. 248-699-0232**



**NOTE: CONTACT PETITIONER  
 FOR MORE INFORMATION ON  
 MONITORING WELLS.**



 **-AREA OF ENCROACHMENTS**

(FOR OFFICE USE ONLY)

**CARTO 60F**

<b>B</b>					
<b>A</b>					
<b>DESCRIPTION</b>	<b>DRWN</b>	<b>CHKD</b>	<b>APPD</b>	<b>DATE</b>	
<b>REVISIONS</b>					
<b>DRAWN BY</b>	<b>CHECKED</b>				
<b>DATE</b>	<b>APPROVED</b>				
<b>ahb</b>					
<b>7/10/06</b>					

**REQUESTED TO ENCROACH INTO  
 E. McNICHOLS AND GUNSTON WITH  
 FIVE MONITORING WELLS.**

**CITY OF DETROIT**  
**CITY ENGINEERING DEPARTMENT**  
**SURVEY BUREAU**

**JOB NO. 01-01**

**DRWG. NO. x190.dgn**