

**City of Detroit**  
OFFICE OF THE CITY CLERK

Jackie L. Currie  
City Clerk

Vernon C. Allen  
Deputy City Clerk

**RECEIVED**  
CITY ENGINEERING DIV.-DPW  
JUL 14 2005

By \_\_\_\_\_

**DEPARTMENTAL REFERENCE COMMUNICATION**

July 6, 2005

To: The Department or Commission Listed Below

From: Jackie L. Currie  
Detroit City Clerk

The following petition is herewith referred to you for report and recommendation to the City Council

In accordance with that body's directive, kindly return the same with your report in duplicate within four (4) weeks.

**/PUBLIC WORKS - CITY ENGINEERING DIVISION/**

**3990 U.S. Postal Service/American Postal Workers Union P&DC Joint Labor Management Safety and Health Committee, for permanent closure of alley behind 10721 Jefferson at Montclair and Harding.**

3990

Calvin Snead  
U.S. Postal Service/  
American Postal Workers Union  
P&DC Joint Labor Management  
Safety and Health Committee  
1770 14th Street  
Detroit, MI 48216

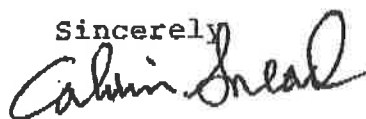
The Honorable City Council  
City Of Detroit  
2 Woodward Avenue  
Coleman A. Young Building  
200 City Clerk Office  
Detroit, MI 48226

Reference: Petition To Have The Alley Closed Behind 10721 Jefferson  
Avenue Between Montclair And Harding.

The reason for this Petition is 10721 Jefferson Avenue is the U.S. Post Office, behind the Post Office is the Post Office Loading Dock. It is Unsafe the way the Dock is set up now Very Unsafe. The Dock Area have a Very Steep Uphill Grade Approaching the Loading Lift and this is a Safety Hazard. The Employees must Push, Pull and Maneuver the heavy Shipping Containers in An Extremely Dangerous Manner to Load and Unload. Incidents have already Occurred where Containers came back And Smashed Employees against other Containers and to the back of vehicle. The only way to correct the Problem is to Build up the alley in front of the Lift to make the Tractor Trailers, 11, 10, 9, and 7 Tons Vehicle Level so the Very Steep Uphill Grade is no longer there. The Post Office have the entire Block between Montclair and Harding on Jefferson Avenue.

I thank you in advance for your time and patience in considering this Very Important Request For A Petition To Closed The Alley.

Sincerely



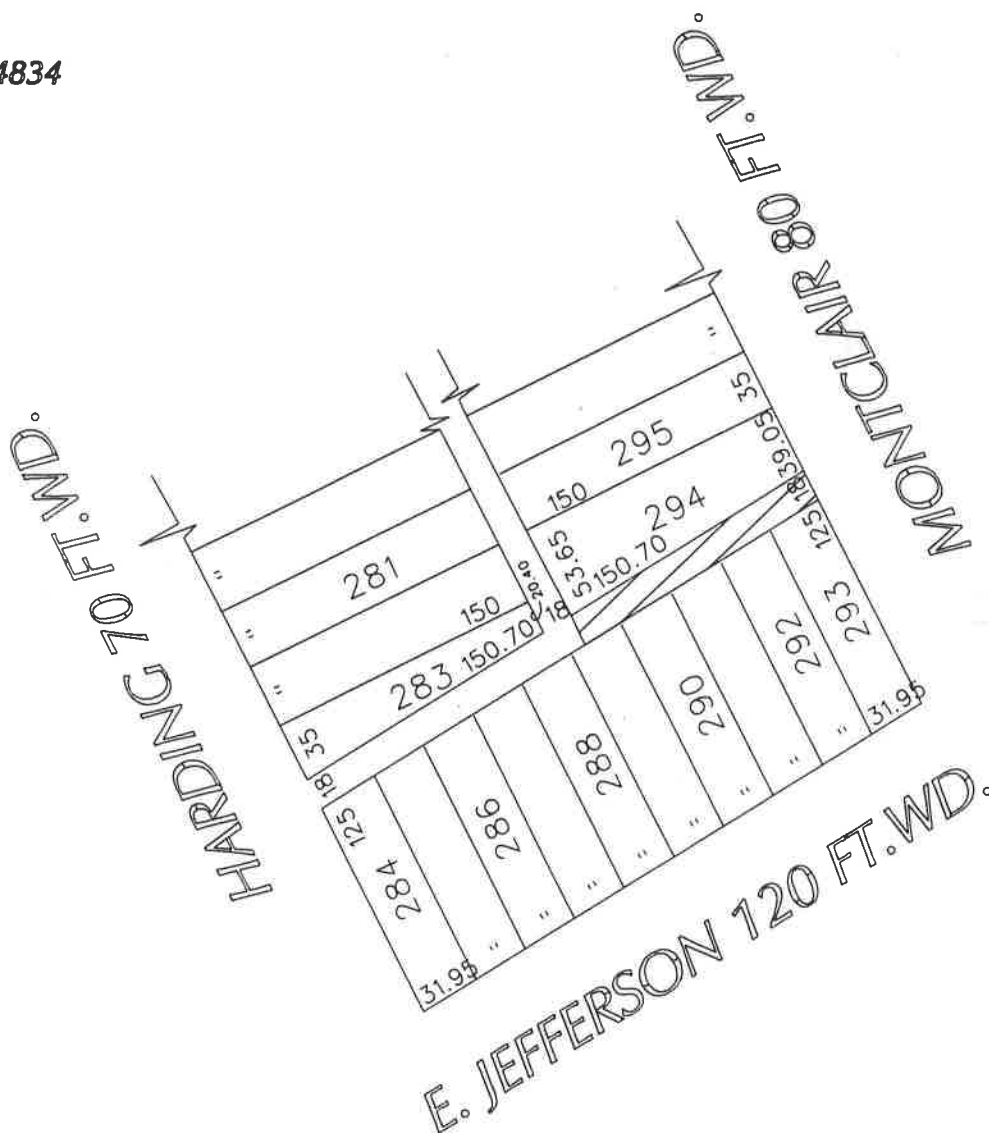
313-961-4834

cc: Gloria Tyson  
Louise Dunlap  
Angela Canfield  
John Riley  
Scena Lois Dew  
Patrick Chornoby  
Kermit Chatman

2005 JUN 31 P 3:51

DETROIT  
CITY CLERK

PETITION NO. 3990  
 U.S. POSTAL SERVICE,  
 AMERICAN POSTAL WORKERS UNION P,  
 DC JOINT LABOR MGMT. SAFETY &  
 HEALTH COMMITTEE  
 1770 14TH ST.  
 c/o CALVIN SNEAD  
 PHONE NO. 313-961-4834



- REQUESTED CONVERSION TO EASEMENT

364-316  
 364-318

(FOR OFFICE USE ONLY)

CARTO 54 B

B					
A					
DESCRIPTION	DRWN	CHKD	APPD	DATE	
REVISIONS					
DRAWN BY	NP		CHECKED		
DATE	10-26-05		APPROVED		

REQUESTED CONVERSION TO EASEMENT THE  
 EAST PORTION OF THE EAST-WEST PUBLIC ALLEY  
 IN THE AREA OF E. JEFFERSON, HARDING, AND  
 MONTCLAIR.

CITY OF DETROIT  
 CITY ENGINEERING DEPARTMENT  
 SURVEY BUREAU

JOB NO. 01-01

DRWG. NO. x3990.dgn