

Department of Public Works
City Engineering Division
September 21, 2000

Honorable City Council:

Re: Petition No. 2225 — V.I.S.I.O.N., Inc.,
for public easement encroachment in
the area of Mt. Elliott Ave., Vernor
Ave. and Waterloo.

Petition No. 2225 of V.I.S.I.O.N. (Vital
Investments Serving In Our Neighbor-
hoods), Inc., originally requested to
encroach into certain easements within
the Elmwood Area, but after review by city
departments V.I.S.I.O.N., Inc., has amend-
ed the original request. V.I.S.I.O.N., Inc.,

now request to outright vacate the north
15.00 feet of the Waterloo easement, 50
feet wide, the east 15.00 feet of the Ellery
easement, 50 feet wide, and the west
15.00 feet of the Burlage easement, 50
feet wide, south of Vernor Highway and
west of Mt. Elliott (said parts of public
street having been previously vacated and
converted into subsurface utility easement
on June 7, 1978 — J.C.C. pgs. 1613-23).

The petition was referred to the City
Engineering Division — DPW for investi-
gation (utility review) and report. This is
our report.

Detroit Edison Company, Michigan
Consolidated Gas Company, and the
Water and Sewerage Department have
reported facilities in the area. However,
have reported no objections to the vaca-
tion of the public utility easements.

An appropriate resolution is attached
for consideration by your Honorable Body.

Respectfully submitted,

SUNDAY JAIYESIMI

City Engineer

City Engineering Division — DPW

By Council Member Tinsley-Talabi:

Resolved, All that part of the subsur-
face public utility easement in Lot 56 and
Theta Park of "Elmwood Park Urban
Renewal Plat No. 3 of part of Private
Claims 90, 14, 91, 733, 609, 9 and 454,
11 and 453, 182 and 15", City of Detroit,
Wayne County, Michigan as recorded in
Liber 100, Page 64, Plats, Wayne County
Records; being more particularly
described in two 15.00 feet wide strips as
follows:

(1) Beginning at the northeast corner
of Lot 56 (which is also the northwest cor-
ner of Theta Park), thence S.26°16'16"E,
95.01 feet; thence S.59°52'26"W., 441.05
feet; thence N.26°12'37"W., 125.78 feet;
thence S.63°52'27"W., 15.00 feet; thence
S.26°12'37"E., 141.87 feet; thence
N.59°52'26"E., 471.14 feet; thence
N.26°16'16"W., 109.00 feet; thence
S.63°52'27"W., 15.00 feet to the point of
beginning, containing 10,379 square feet
or 0.2383 acres more or less [said part of
the subsurface public utility easement
having been the northerly 15.00 feet of
previously vacated Waterloo Street, 50
feet wide, the westerly 15.00 feet of previ-
ously vacated Burlage Place, 50 feet
wide, the easterly 15.00 feet of previously
vacated Ellery Street, 50 feet wide; said
parts of former public rights-of-way having
been previously vacated and converted
into subsurface public utility easement(s)
in the City Council resolution adopted on
June 7, 1978 — J.C.C. pgs. 1613-23]; also

(2) Commencing at the northeast cor-
ner of Lot 56, (which is also the northwest
corner of Theta Park) thence
N.63°52'27"E., 50.00 feet, to the point of
beginning; thence S.63°52'27"W., 15.00
feet, thence S.26°16'16"E., 107.60 feet,
thence N.59°52'26"E., 234.77 feet, thence

N.26°07'07"W., 15.04 feet, thence
S.59°52'26"W., 219.78 feet, thence
N.26°16'16"W., 91.52 feet to the point of
beginning, containing 4,902 square feet or
0.1125 acres more or less [said part of the
subsurface public utility easement having
been the northerly 15.00 feet of previous-
ly vacated Waterloo Street, 50 feet wide,
and the easterly 15.00 feet of previously
vacated Burlage Place, 50 feet wide, said
parts of former public rights-of-way having
been previously vacated and converted
into subsurface public utility easement(s)
in the City Council resolution adopted on
June 7, 1978 — J.C.C. pgs. 1613-23];

Be and the same is hereby vacated
(outright) as public utility easement(s) to
become part and parcel of the abutting
property; and be it further

Resolved, That the City Clerk shall
within 30 days record a certified copy of
this resolution with the Wayne County
Register of Deeds.

Adopted as follows:

Yeas — Council Members K. Cockrel,
Jr., S. Cockrel, Everett, Hood, Mahaffey,
Scott, Tinsley-Talabi, and President Hill
— 8.

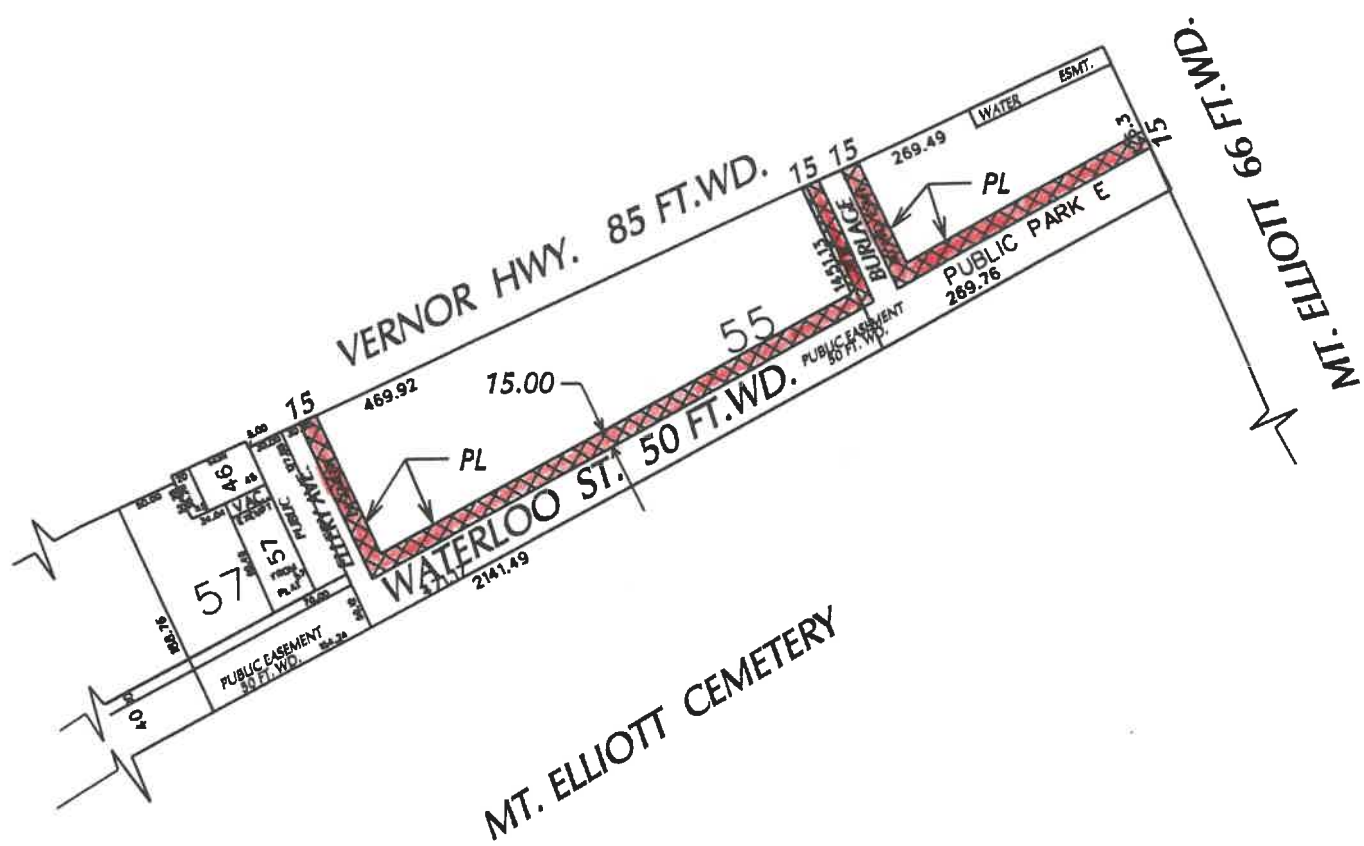
Nays — None.

OCT. 4, 2000

J.C.C. Pgs. 2393-94



PETITION NO. 2225
 V.I.S.I.O.N.
 P.O. BOX 07099
 C/O HOPE A. HART
 PHONE NO. 313.579.1488
 FAX NO. 313.579.9551



 REQUESTED 15.00 FT. OUT-RIGHT VACATION OF EXISTING EASEMENT

CARTO. NO. 39-F

(ONLY FOR OFFICE USE)

B					CITY OF DETROIT CITY ENGINEERING DEPARTMENT SURVEY BUREAU
A					REQUEST OUT-RIGHT VACATION OF THE EAST 15 FT. OF ELLERY 60 FT. WD. EASEMENT, THE EAST AND WEST 15 FT. OF BURLAGE 50 FT. WD. EASEMENT AND THE NORTH 15 FT. OF WATERLOO 50 FT. WD. EASEMENT BTWN. ELLERY AND MT. ELLIOTT IN THE AREA SOUTH OF VERNOR HWY. 85 FT. WD. AND WEST OF MT. ELLIOTT 66 FT. WD.
DESCRIPTION		DRAWN	CHECKED	APPROVED	DATE
DRAWN BY N.P.		CHECKED			
DATE 8.08.00		APPROVED			
					JOB NO. 01-01 DRWG. NO. X2225.DGN