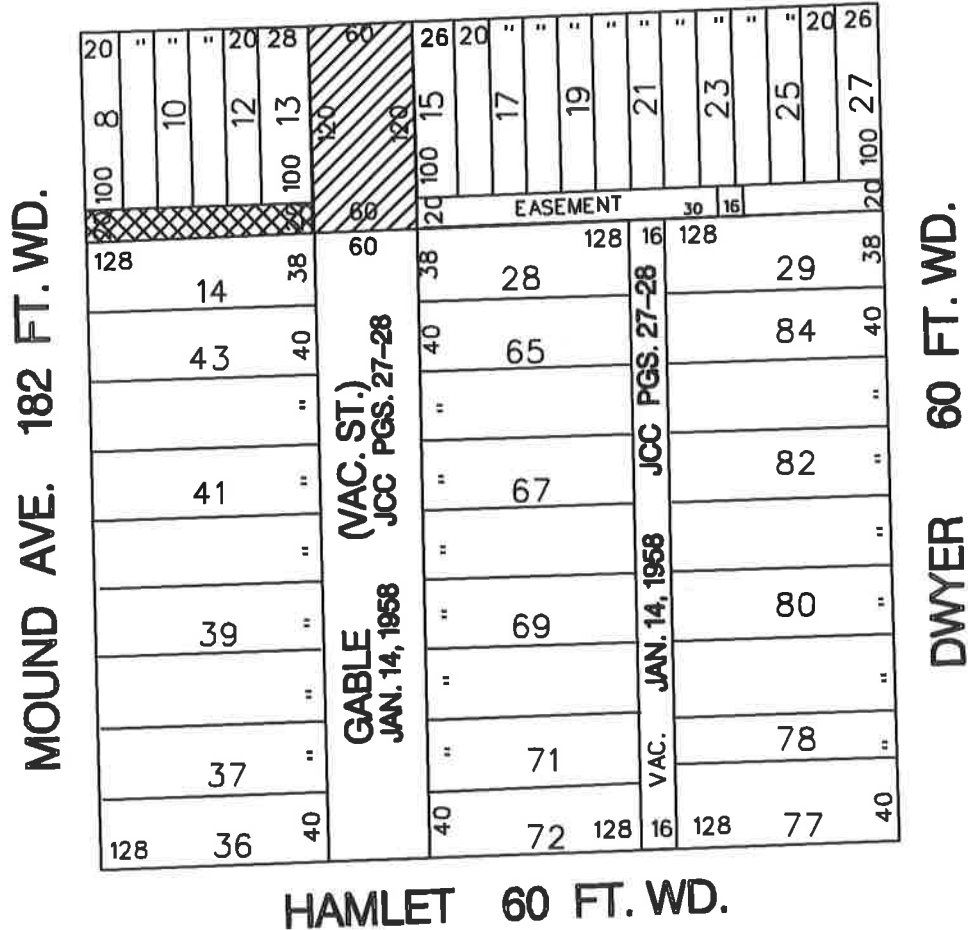
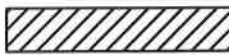



PETITION No. 0015  
 BENNY D's LOUNGE - c/o BADRI JAMIL  
 2366 JOHN R., APT. # 105  
 TROY, MI 48083



EAST EIGHT MILE 204 FT. WD.



 PENDING PETITION No. 0016  
 REQUESTED CONVERSION TO EASEMENT

CARTO 92B  
 ASSESSOR'S BASELINE SUPERHIGHWAY SUBD.  
 SCALE: N.T.S.

(FOR OFFICE USE ONLY)

B						REQUESTED CONVERSION TO EASEMENT OF THE REMAINING E-W 20 FT. WD. ALLEY IN THE BLOCK BOUNDED BY E. EIGHT MILE, GABLE ST., HAMLET AND MOUND AVENUE	CITY OF DETROIT CITY ENGINEERING DEPARTMENT SURVEY BUREAU JOB NO. 01-01 DRWG. NO. X0015.DGN
A							
DESCRIPTION		DRWN	CHEK	APPD	DATE		
DRAWN BY		CHECKED					
DATE		APPROVED					