

City Engineering Department

December 19, 1988

Honorable City Council:

Re: Petition No. 3863. Community and Economic Development Department — North Industrial Rehabilitation Project Street and alley vacations and dedications in the area bounded by Oakland, Russell, Caniff, and the City of Highland Park.

To develop properties in North Industrial Rehabilitation Project it is necessary to vacate several public streets and alleys in the area bounded by Oakland Avenue, Russell Street, Caniff Avenue, and the City of Highland Park; also it is necessary to set-aside City-owned land for the widening of Oakland Avenue, Russell Street, Caniff Avenue, and the relocation of Woodland Avenue.

The public street and alley closings were approved by the Department of Transportation.

Provisions protecting utility installations (in part of Woodland, and part of Russell) are part of the resolution.

Satisfactory arrangements have been made with all City departments and privately-owned utility companies.

An appropriate resolution is attached for consideration by your Honorable Body.

Respectfully submitted,

CLYDE R. HOPKINS

Director

By Council Member Ravitz:

Resolved, All that part of Goodwin Avenue, 60 feet wide, lying between and abutting the north line of Caniff Avenue (66 feet wide) and the south line of Woodland Avenue (60 feet wide, having been opened as a public street on February 2, 1909 — J.C.C. page 114); said part of Goodwin Avenue lying westerly of and abutting the west line of Lot 170; also lying westerly of and abutting the west line of the previously vacated east-west public alley, 16 feet wide (in the block bounded by Goodwin, Cameron, Caniff, and Rosedale; December 11, 1917 — J.C.C. page 1651); also lying westerly of and abutting the west line of Lots 138 to 169; also lying easterly of and abutting the east line of Lot 3; also lying easterly of and abutting the east line of the previously vacated east-west public alley, 16 feet wide (in the block bounded by Oakland, Goodwin, Caniff, and Rosedale; December 29, 1908 — J.C.C. page 1678); also lying easterly of and abutting the east line of Lots 4 to

35 as platted in "Cardoni's Subdivision of the West 20 acres of Quarter Section 23, Ten Thousand Acre Tract, Hamtramck," City of Detroit, Wayne County, Michigan as recorded in Liber 15, Page 19, Plats, Wayne County Records; also

All that part of Goodwin Avenue, 60 feet wide, lying between and abutting the north line of Woodland Avenue (60 feet wide, having been opened as a public street on February 2, 1909 — J.C.C. page 114) and the City of Highland Park; said part of Goodwin Avenue lying westerly of and abutting the west line of the south 7.24 feet of Lot 130, and Lots 131 to 135; also lying easterly of and abutting the east line of the south 7.93 feet of Lot 43, and Lots 38 to 42 of "Cardoni's Subdivision of the West 20 acres of Quarter Section 23, Ten Thousand Acre Tract, Hamtramck," City of Detroit, Wayne County, Michigan as recorded in Liber 15, Page 19, Plats, Wayne County Records; also

All that part of Cameron Avenue, 50 feet wide, lying between and abutting the north line of Caniff Avenue (66 feet wide) and the south line of Woodland Avenue (60 feet wide, having been opened as a public street on February 2, 1909 — J.C.C. page 114); said part of Cameron Avenue lying westerly of and abutting the west line of Lot 87; also lying westerly of and abutting the west line of the previously vacated east-west public alley, 15 feet wide (in the block bounded by Cameron, Hawthorne, Caniff, and Rosedale; March 10, 1914 — J.C.C. page 311); also lying westerly of and abutting the west line of Lots 90 to 121; also lying easterly of and abutting the east line of Lot 86; also lying easterly of and abutting the east line of the east-west public alley, 15 feet wide (in the block bounded by Goodwin, Cameron, Caniff, and Rosedale); also lying easterly of and abutting the east line of Lots 52 to 83 as platted in "Wagner and Brandenburg's Subdivision of the East 15 acres of the West 35 acres of Quarter Section 23, Ten Thousand Acre Tract, Hamtramck," City of Detroit, Wayne County, Michigan as recorded in Liber 13, Page 4, Plats, Wayne County Records; also

All that part of Cameron Avenue, 50 feet wide, lying between and abutting the north line of Woodland Avenue (60 feet wide, having been opened as a public street on February 2, 1909 — J.C.C. page 114) and the City of Highland Park; said part of Cameron Avenue lying westerly of and abutting the west line of the south 11.47 feet of Lot 129, and Lots 124 to 128; also lying easterly of and abutting the east line of the south 11.32 feet of Lot 44, and Lots 45 to 49 of "Wagner and Brandenburg's Subdivision of the East 15 acres of the West 35

acres of Quarter Section 23, Ten Thousand Acre Tract, Hamtramck," City of Detroit, Wayne County, Michigan as recorded in Liber 13, Page 4, Plats, Wayne County Records; also

All that part of Hawthorne Avenue, 60 feet wide, lying between and abutting the north line of Caniff Avenue (66 feet wide) and the south line of Woodland Avenue (60 feet wide, having been opened as a public street on February 2, 1909 — J.C.C. page 114); said part of Hawthorne Avenue lying westerly of and abutting the west line of Lot 29; also lying westerly of and abutting the west line of the east-west public alley, 18 feet wide (in the block bounded by Hawthorne, Cardoni, Caniff, and Rosedale); also lying westerly of and abutting the west line of Lots 33 to 56; also lying easterly of and abutting the east line of Lot 28; also lying easterly of and abutting the east line of the previously vacated east-west public alley, 18 feet wide (in the block bounded by Cameron, Hawthorne, Caniff, and Rosedale; March 10, 1914 — J.C.C. page 311); also lying easterly of and abutting the east line of Lots 1 to 24 as platted in "Leggett and Rodger's Subdivision of the Southerly 6.66 acres of the Easterly 20 acres of the Westerly 55 acres of Quarter Section 23, Ten Thousand Acre Tract, Hamtramck," City of Detroit, Wayne County, Michigan as recorded in Liber 18, Page 12, Plats, Wayne County Records; also lying westerly of and abutting the west line of Lots 89 to 95; also lying easterly of and abutting the east line of Lots 196 and 197 as platted in "Oakland Land Company Subdivision of part of Quarter Section 23, Ten Thousand Acre Tract, City of Detroit and Village of Highland Park," (City of Detroit) Wayne County, Michigan as recorded in Liber 27, Page 5, Plats, Wayne County Records; also

lying easterly of land abutting the east line of Lots 1 to 6 as platted in "Girvins Subdivision of part of Quarter Section 23, Ten Thousand Acre Tract, Hamtramck," City of Detroit, Wayne County, Michigan as recorded in Liber 23, Page 16, Plats, Wayne County Records; also

All that part of Hawthorne Avenue, 60 feet wide, lying between and abutting the north line of Woodland Avenue (60 feet wide, having been opened as a public street on February 2, 1909 — J.C.C. page 114) and the City of Highland Park; said part of Hawthorne Avenue lying westerly of and abutting the west line of the south 15.17 feet of Lot 101, and Lots 96 to 100; also lying easterly of and abutting the east line of the south 14.08 feet of Lot 190, and Lots 191 to 195 of "Oakland Land Company Subdivision of part of Quarter Section 23, Ten Thousand Acre Tract, City of Detroit and Village of Highland Park," (City of Detroit) Wayne County, Michigan as recorded in Liber 27, Page 5, Plats, Wayne County Records; also

All that part of Cardoni Avenue, 60 feet wide, lying between and abutting the north line of Caniff Avenue (66 feet wide) and the south line extended westerly (to the west line of said Cardoni Avenue) of Woodland Avenue (50 feet wide, having been opened as a public street on February 2, 1909 — J.C.C. page 114); said part of Cardoni Avenue lying westerly of and abutting the west line of Lot 5; also lying westerly of and abutting the west line of the east-west public alley, 18 feet wide (in the block bounded by Cardoni, Russell, Caniff, and Rosedale); also lying westerly of and abutting the west line of the south 107.85 feet of Lot 21, and Lots 9, 11, 13, 15, 17, and 19; also lying easterly of and abutting the east line of Lot 4; also lying easterly of and abutting the east line of the east-wide public alley, 18 feet wide (in the block bounded by Hawthorne, Cardoni, Caniff, and Rosedale); also lying easterly of and abutting the east line of the south 107.38 feet of Lot 22, and Lots 10, 12, 14, 16, 18, and 20 as platted in "Landrest Subdivision of part of Quarter Section 23, Ten Thousand Acre Tract, Villages of Hamtramck and Highland Park," (City of Detroit) Wayne County, Michigan as recorded in Liber 23, Page 60, Plats, Wayne County Records; also

All that part of Cardoni Avenue, 60 feet wide, lying between and abutting the north line extended easterly (to the east line of said Cardoni Avenue) of Woodland Avenue (60 feet wide, having been opened as a public street on February 2, 1909 — J.C.C. page 114) and the City of Highland Park; said part of Cardoni Avenue lying westerly of and abutting the west line of the north 36.54 feet of Lot 23, and the south 131.93 feet of Lot 25; also lying easterly of and abutting the east line of the north 36.07 feet of Lot 24, and the south 131.80 feet of Lot 26 of "Landrest Subdivision of part of Quarter Section 23, Ten Thousand Acre Tract, Villages of Hamtramck and Highland Park," (City of Detroit) Wayne County, Michigan as recorded in Liber 23, Page 60, Plats, Wayne County Records; also

All that part of Rosedale Court, 60 feet wide (having been opened as a public street on April 27, 1909 — J.C.C. page 582), lying between and abutting the east line of Oakland Avenue (66 feet wide) and the west line of Goodwin Avenue (60 feet wide); said part of Rosedale Court having been platted as Lots 15 and 16 in "Cardoni's Subdivision of the West 20 acres of Quarter Section 23, Ten Thousand Acre Tract, Ham-

(PAGE 1 OF 5)

J.C.C. PGS. 21-30

JAN. 4, 1989

lying southerly of and abutting the south line of Lot 10; also lying southerly of and abutting (the east half of) the south line of the north-south public alley (18 feet wide); also lying northerly of and abutting the north line of Lots 1 to 4 of "Landrest Subdivision of part of Quarter Section 23, Ten Thousand Acre Tract, Villages of Hamtramck and Highland Park," (City of Detroit) Wayne County, Michigan as recorded in Liber 23, Page 60, Plats, Wayne County Records; and

All of the north-south public alley, 17 feet wide, in the block bounded by Cardoni Avenue, Russell Street, Caniff Avenue, and Rosedale Court lying westerly

of and abutting the west line of Lots 45 to 55 of "Oak Park, Adolph Sloman's Subdivision of a portion of Quarter Section 23, Ten Thousand Acre Tract, Hamtramck," City of Detroit, Wayne County, Michigan as recorded in Liber 13, Page 34, Plats, Wayne County Records; also lying easterly of and abutting the east line of the south 72.00 feet of Lot 13, Lots 9 and 11 of "Landrest Subdivision of part of Quarter Section 23, Ten Thousand Acre Tract, Villages of Hamtramck and Highland Park," (City of Detroit) Wayne County, Michigan as recorded in Liber 23, Page 60, Plats, Wayne County Records; also

All that part of the east-west public alley, 16 and 18 feet wide, in the block bounded by Cardoni Avenue, Russell Street, Caniff Avenue, and Rosedale Court lying southerly of and abutting the south line of Lot 9; also lying southerly of and abutting (the west part of) the south line of the north-south public alley (17 feet wide); also lying northerly of and abutting the north line of Lots 5 to 8 of "Landrest Subdivision of part of Quarter Section 23, Ten Thousand Acre Tract, Villages of Hamtramck and Highland Park," (City of Detroit) Wayne County, Michigan as recorded in Liber 23, Page 60, Plats, Wayne County Records; also lying southerly of and abutting the south line of the west 65.00 feet of Lot 55; also lying southerly of and abutting (the east part of) the south line of the north-south public alley (17 feet wide); also lying northerly of and abutting the north line of the west 1.00 foot of Lot 58, Lots 56 and 57 of "Oak Park, Adolph Sloman's Subdivision of a portion of Quarter Section 23, Ten Thousand Acre Tract, Hamtramck," City of Detroit, Wayne County, Michigan as recorded in Liber 13, Page 34, Plats, Wayne County Records; also

All of the north-south public alley, 19 feet wide (as deeded to the City on January 10, 1911 — J.C.C. page 20, and widened on June 20, 1911 — J.C.C. page 1025), in the block bounded by Goodwin and Cameron Avenues, Rosedale Court, and Woodland Avenue lying westerly of and abutting the west line of Lots 52 to 70 of "Wagner and Brandenburg's Subdivision of the East 15 acres of the West 35 acres of Quarter Section 23, Ten Thousand Acre Tract, Hamtramck," City of Detroit, Wayne County, Michigan as recorded in Liber 13, Page 4, Plats, Wayne County Records; also lying easterly of and abutting the east line of Lots 138 to 156 of "Cardoni's Subdivision of the West 20 acres of Quarter Section 23, Ten Thousand Acre Tract, Hamtramck," City of Detroit, Wayne County, Michigan as recorded in Liber 15, Page 19, Plats, Wayne County Records; also

All of the north-south public alley, 15 and 18 feet wide (as widened on June 20, 1911 — J.C.C. page 1025), in the block bounded by Cameron and Hawthorne Avenues, Rosedale Court, and Woodland Avenue lying westerly of and abutting the west line of Lots 196 and 197 of "Oakland Land Company Subdivision of part of Quarter Section 23, Ten Thousand Acre Tract, City of Detroit and Village of Highland Park," (City of Detroit) Wayne County, Michigan as recorded in Liber 27, Page 5, Plats, Wayne County Records; also lying westerly of and abutting the west line of Lots 1 to 6 of "Girvins Subdivision of part of Quarter Section 23, Ten Thousand Acre Tract, Hamtramck," City of Detroit, Wayne County, Michigan as recorded in Liber 23, Page 16, Plats, Wayne County Records; also lying westerly of and abutting the west line of Lots 1 to 11 of "Leggett and Rodger's Subdivision of the Southerly 6.66 acres of the Easterly 20 acres of the Westerly 55 acres of Quarter Section 23, Ten Thousand Acre Tract, Hamtramck," City of Detroit, Wayne County, Michigan as recorded in Liber 18, Page 12, Plats, Wayne County Records; also lying easterly of and abutting the east line of Lots 103 to 121 of "Wagner and Brandenburg's Subdivision of the East 15 acres of the West 35 acres of Quarter Section 23, Ten Thousand Acre Tract, Hamtramck," City of Detroit, Wayne County, Michigan as recorded in Liber 13, Page 4, Plats, Wayne County Records; also

All of the north-south public alley, 18 feet wide, in the block bounded by Hawthorne and Cardoni Avenues, Rosedale Court, and Woodland Avenue lying westerly of and abutting the west line of the south 37.20 feet of Lot 24, and Lots 16, 18, 20, and 22 of "Landrest Subdivision of part of Quarter Section 23, Ten Thousand Acre Tract, Villages of Hamtramck and Highland Park," (City of Detroit) Wayne County, Michigan as recorded in Liber 23, Page 60, Plats, Wayne County Records; also lying easterly of and abutting the east line of Lots 46 to 56 of "Leggett and Rodger's Subdivision of the Southerly 6.66 acres of the Easterly 20 acres of the Westerly 55 acres of Quarter Section 23, Ten Thousand Acre Tract, Hamtramck," City of Detroit, Wayne County, Michigan as recorded in Liber 18, Page 12, Plats, Wayne County Records; also

All that part of the north-south public alley, 17 feet wide, in the block bounded by Cardoni Avenue, Russell Street, Rosedale Court, and Woodland Avenue (50 feet wide) lying westerly of and abutting the west line of Lots 26 to 42 of "Oak Park, Adolph Sloman's Subdivision of a portion of Quarter Section 23, Ten Thousand Acre Tract, Hamtramck," City of Detroit, Wayne County, Michigan as recorded in Liber 13, Page 34, Plats, Wayne County Records; also lying easterly of and abutting the east line of the south 108.20 feet of Lot 21, and Lots 15, 17, and 19 of "Landrest Subdivision of part of Quarter Section 23, Ten Thousand Acre Tract, Villages of Hamtramck and Highland Park," (City of Detroit) Wayne County, Michigan as recorded in Liber 23, Page 60, Plats, Wayne County Records; also

All that part of the north-south public alley, 19 feet wide (as deeded to the City on January 10, 1911 — J.C.C. page 20, and widened on June 20, 1911 — J.C.C. page 1025), in the block bounded by Goodwin, Cameron, and Woodland Avenues, and the City of Highland Park lying westerly of and abutting the west line of the south 10.49 feet of Lot 44, and Lots 45 to 49 of "Wagner and Brandenburg's Subdivision of the East 15 acres of the West 35 acres of Quarter Section 23, Ten Thousand Acre Tract, Hamtramck," City of Detroit, Wayne County, Michigan as recorded in Liber 13, Page 4, Plats, Wayne County Records; also lying easterly of and abutting the east line of the south 8.59 feet of Lot 130, and Lots 131 to 135 of "Cardoni's Subdivision of the West 20 acres of Quarter Section 23, Ten Thousand Acre Tract, Hamtramck," City of Detroit, Wayne County, Michigan as recorded in Liber 15, Page 19, Plats, Wayne County Records; also

All that part of north-south public alley, 18 feet wide (as widened on June 20, 1911 — J.C.C. page 1025), in the block bounded by Cameron, Hawthorne, and Woodland Avenues, and the City of Highland Park lying westerly of and abutting the west line of the south 11.47 feet of Lot 190, and Lot 191 to 195 of "Oakland Land Company Subdivision of part of Quarter Section 23, Ten Thousand Acre Tract, City of Detroit and Village of Highland Park," (City of Detroit) Wayne County, Michigan as recorded in Liber 27, Page 5, Plats, Wayne County Records; also lying easterly of and abutting the east line of the south 12.76 feet of Lot 129, and Lots 124 to 128 of "Wagner and Brandenburg's Subdivision of East 15 acres of the West 35 acres of Quarter Section 23, Ten Thousand Acre Tract, Hamtramck," City of Detroit, Wayne County, Michigan as recorded in Liber 13, Page 4, Plats, Wayne County Records; also

All that part of north-south public alley, 18 feet wide in the block bounded by Hawthorne, Cardoni, and Woodland Avenues, and the City of Highland Park lying westerly of and abutting the west line of the south 131.69 feet of Lot 26, and the north 34.80 feet of Lot 24 of "Landrest Subdivision of part of Quarter Section 23, Ten Thousand Acre Tract, Villages of Hamtramck and Highland Park," (City of Detroit) Wayne County, Michigan as recorded in Liber 23, Page 60, Plats, Wayne County Records; also lying easterly of and abutting the east line of the south 16.24 feet of Lot 101, and Lots 96 to 100 of "Oakland Land Company Subdivision of part of Quarter Section 23, Ten Thousand Acre Tract, City of Detroit and Village of Highland Park," (City of Detroit) Wayne County, Michigan as recorded in Liber 27, Page 5, Plats, Wayne County Records; also

All that part of north-south public alley, 17 feet wide in the block bounded by Cardoni Avenue, Russell Street, Woodland Avenue, and the City of Highland Park lying westerly of and abutting the west line of the south 29.80 feet of Lot 18, the north 19.84 feet of Lot 23, and Lots 19 to 22 of "Oak Park, Adolph Sloman's Subdivision of a portion of Quarter Section 23, Ten Thousand Acre Tract, Hamtramck," City of Detroit, Wayne County, Michigan as recorded in Liber 13, Page 34, Plats, Wayne County Records; also lying easterly of and abutting the east line of the north 37.57 feet of Lot 23, and Lot 25 of "Landrest Subdivision of part of Quarter Section 23, Ten Thousand Acre Tract, Villages of Hamtramck and Highland Park," (City of Detroit) Wayne County, Michigan as recorded in Liber 23, Page 60, Plats, Wayne County Records;

(PAGE 2 OF 5)

J.C.C. PGS. 21-30

JAN. 4, 1989

tramck." City of Detroit, Wayne County, Michigan as recorded in Liber 15, Page 19, Plats, Wayne County Records; also

All that part of Rosedale Court, 60 feet wide (having been opened as a public street on April 27, 1909 — J.C.C. page 582), lying between and abutting the east line of Goodwin Avenue (60 feet wide) and the west line of Cameron Avenue (50 feet wide); said part of Rosedale Court lying southerly of and abutting the south line of Lot 156; also lying southerly of and abutting the south line of the north-south public alley, 19 feet wide (in the block bounded by Goodwin, Cameron, Rosedale, and Woodland; as deeded to the City on January 10, 1911 — J.C.C. page 20, and widened on June 20, 1911 — J.C.C. page 1025); also lying northerly of and abutting the north line of Lot 159; also lying northerly of and abutting the north line of the north-south public alley, 19 feet wide (in the block bounded by Goodwin, Cameron, Caniff, and Rosedale; as deeded to the City on January 10, 1911 — J.C.C. page 20, and widened on June 20, 1911 — J.C.C. page 1025) of "Cardoni's Subdivision of the West 20 acres of Quarter Section 23, Ten Thousand Acre Tract, Hamtramck." City of Detroit, Wayne County, Michigan as recorded in Liber 15, Page 19, Plats, Wayne County Records; also lying southerly of and abutting the south line of Lot 70; also lying northerly of and abutting the north line of Lot 73 of "Wagner and Brandenburg's Subdivision of the East 15 acres of the West 35 acres of Quarter Section 23, Ten Thousand Acre Tract, Hamtramck." (City of Detroit) Wayne County, Michigan as recorded in Liber 13, Page 4, Plats, Wayne County Records; also

All that part of Rosedale Court, 60 feet wide (having been opened as a public street on April 27, 1909 — J.C.C. page 582), lying between and abutting the east line of Cameron Avenue (50 feet wide) and the west line of Hawthorne Avenue (60 feet wide); said part of Rosedale Court lying southerly of and abutting the south line of Lot 103; also lying northerly of and abutting the north line of Lot 100 of "Wagner and Brandenburg's Subdivision of the East 15 acres of the West 35 acres of Quarter Section 23, Ten Thousand Acre Tract, Hamtramck." (City of Detroit) Wayne County, Michigan as recorded in Liber 13, Page 4, Plats, Wayne County Records; also lying southerly of and abutting the south line of the north-south public alley, 15 feet wide (in the block bounded by Cameron, Hawthorne, Rosedale, and Woodland; as widened on June 20, 1911 — J.C.C. page 1025); also lying southerly of and abutting the south line of Lot 11; also lying northerly of and abutting the north line of the

previously vacated north-south public alley, 15 feet wide (in the block bounded by Cameron, Hawthorne, Caniff and Rosedale; as widened on June 20, 1911 — J.C.C. page 1025, and vacated on March 10, 1914 — J.C.C. page 311); also lying northerly of and abutting the north line of Lot 14 of "Leggett and Rodger's Subdivision of the Southerly 6.66 acres of the Easterly 20 acres of the Westerly 55 acres of Quarter Section 23, Ten Thousand Acre Tract, Hamtramck." City of Detroit, Wayne County, Michigan as recorded in Liber 18, Page 12, Plats, Wayne County Records; also

All that part of Rosedale Court, 60 feet wide (having been opened as a public street on April 27, 1909 — J.C.C. page 582), lying between and abutting the east line of Hawthorne Avenue (60 feet wide) and west line of Cardoni Avenue (60 feet wide); said part of Rosedale Court lying southerly of and abutting the south line of Lot 46; also lying southerly of and abutting (the west half of) the south line of the north-south public alley, 18 feet wide (in the block bounded by Hawthorne, Cardoni, Rosedale, and Woodland); also lying northerly of and abutting the north line of Lot 43; also lying northerly of and abutting (the west half of) the north line of the north-south public alley, 18 feet wide (in the block bounded by Hawthorne, Cardoni, Caniff, and Rosedale), as platted in "Leggett and Rodger's Subdivision of the Southerly 6.66 acres of the Easterly 20 acres of the Westerly 55 acres of Quarter Section 23, Ten Thousand Acre Tract, Hamtramck." City of Detroit, Wayne County, Michigan as recorded in Liber 18, Page 12, Plats, Wayne County Records; also lying southerly of and abutting the south line of Lot 16; also lying southerly of and abutting (the east half of) the south line of the north-south public alley, 18 feet wide (in the block bounded by Hawthorne, Cardoni, Rosedale, and Woodland); also lying northerly of and abutting the north line of the south 72.00 feet of Lot 14; also lying northerly of and abutting (the east half of) the north line of the north-south public alley, 18 feet wide (in the block bounded by Hawthorne, Cardoni, Caniff, and Rosedale), as platted in "Landrest Subdivision of part of Quarter Section 23, Ten Thousand Acre Tract, Villages of Hamtramck and Highland Park, (City of Detroit) Wayne County, Michigan as recorded in Liber 23, Page 60, Plats, Wayne County Records; also

All that part of Rosedale Court, 60 feet wide (having been opened as a public street on April 27, 1909 — J.C.C. page 582), lying between and abutting the east line of Cardoni Avenue (60 feet wide) and a line 35.00 feet west of and parallel to the west line of Russell Street

(50 feet wide); said part of Rosedale Court lying southerly of and abutting the south line of Lot 15; also lying southerly of and abutting (the west part of) the south line of the north-south public alley, 17 feet wide (in the block bounded by Cardoni, Russell, Rosedale, and Woodland); also lying northerly of and abutting the north line of the south 72.00 feet of Lot 13; also lying northerly of and abutting (the west part of) the north line of the north-south public alley, 17 feet wide (in the block bounded by Cardoni, Russell, Caniff, and Rosedale), as platted in "Landrest Subdivision of part of Quarter Section 23, Ten Thousand Acre Tract, Villages of Hamtramck and Highland Park." (City of Detroit) Wayne County, Michigan as recorded in Liber 23, Page 60, Plats, Wayne County Records; also lying southerly of and abutting the south line of the west 65.00 feet of Lot 42; also lying southerly of and abutting (the east part of) the south line of the north-south public alley, 17 feet wide (in the block bounded by Cardoni, Russell, Rosedale, and Woodland); also lying northerly of and abutting the north line of the west 65.00 feet of Lot 45; also lying northerly of and abutting (the east part of) the north line of the north-south public alley, 17 feet wide (in the

block bounded by Cardoni, Russell, Caniff, and Rosedale), as platted in "Oak Park, Adolph Sloman's Subdivision of a portion of Quarter Section 23, Ten Thousand Acre Tract, Hamtramck." City of Detroit, Wayne County, Michigan as recorded in Liber 13, Page 34, Plats, Wayne County Records; also

All of the north-south public alley, 19 feet wide (as deeded to the City on January 10, 1911 — J.C.C. page 20, and widened on June 20, 1911 — J.C.C. page 1025), in the block bounded by Goodwin, Cameron, and Caniff Avenues, and Rosedale Court lying westerly of and abutting the west line of Lots 73 to 83; also lying westerly of and abutting the west line of the east-west public alley (15 feet wide) as platted in "Wagner and Brandenburg's Subdivision of the East 15 acres of the West 35 acres of Quarter Section 23, Ten Thousand Acre Tract, Hamtramck." City of Detroit, Wayne County, Michigan as recorded in Liber 13, Page 4, Plats, Wayne County Records; also lying easterly of and abutting the east line of Lots 159 to 169; also lying easterly of and abutting the east line of the previously vacated east-west public alley (16 feet wide; December 11, 1917 — J.C.C. page 1651) as platted in "Cardoni's Subdivision of the West 20 acres of Quarter Section 23, Ten Thousand Acre Tract, Hamtramck." City of Detroit, Wayne County, Michigan as recorded in Liber 15, Page 19, Plats, Wayne County Records; also

~~All that part of the east-west public alley, 15 feet wide, in the block bounded by Goodwin, Cameron, and Caniff Avenues, and Rosedale Court lying southerly of and abutting the south line of Lot 83; also lying northerly of and abutting the north line of Lots 84 to 86 of "Wagner and Brandenburg's Subdivision of the East 15 acres of the West 35 acres of Quarter Section 23, Ten Thousand Acre Tract, Hamtramck." City of Detroit, Wayne County, Michigan as recorded in Liber 13, Page 4, Plats, Wayne County Records; also~~

All of the north-south public alley, 18 feet wide, in the block bounded by Hawthorne, Cardoni, and Caniff Avenues, and Rosedale Court lying westerly of and abutting the west line of the south 72.00 feet of Lot 14, Lots 10 and 12 of "Landrest Subdivision of part of Quarter Section 23, Ten Thousand Acre Tract, Villages of Hamtramck and Highland Park." (City of Detroit) Wayne County, Michigan as recorded in Liber 23, Page 60, Plats, Wayne County Records; also lying easterly of and abutting the east line of Lots 33 to 43 of "Leggett and Rodger's Subdivision of the Southerly 6.66 acres of the Easterly 20 acres of the Westerly 55 acres of Quarter Section 23, Ten Thousand Acre Tract, Hamtramck." City of Detroit, Wayne County, Michigan as recorded in Liber 18, Page 12, Plats, Wayne County Records; also

All of the east-west public alley, 18 feet wide, in the block bounded by Hawthorne, Cardoni, and Caniff Avenues, and Rosedale Court lying southerly of and abutting the south line of Lot 33; also lying southerly of and abutting (the west half of) the south line of the north-south public alley (18 feet wide); also lying northerly of and abutting the north line of Lots 29 to 32 of "Leggett and Rodger's Subdivision of the Southerly 6.66 acres of the Easterly 20 acres of the Westerly 55 acres of Quarter Section 23, Ten Thousand Acre Tract, Hamtramck." City of Detroit, Wayne County, Michigan as recorded in Liber 18, Page 12, Plats, Wayne County Records; also

(PAGE 3 OF 5)

J.C.C. PGS. 21-30

JAN. 4, 1989

Be and the same are hereby vacated as public (street and alley) rights-of-way to become part and parcel of the abutting property; and be it further

Resolved, All that part of Cardoni Avenue, 60 feet wide, lying southerly of and abutting the south line (extended easterly) of Woodland Avenue (60 feet wide, having been opened as a public street on February 2, 1909 — J.C.C. page 114); also

All that part of Woodland Avenue, 50 feet wide, lying between Cardoni Avenue and Russell Street; also

All that part of the north-south public alley, 17 feet wide, in the block bounded by Cardoni Avenue, Russell Street, Woodland Avenue (50 feet wide), and the City of Highland Park;

The above public rights-of-way are contained within the bounds of a land parcel, being more particularly described as:

Beginning at the Southwest corner of Woodland Avenue, 60 feet wide, and Cardoni Avenue, 60 feet wide; thence North 64° 01' 12" East (along the south line extended easterly of said Woodland Avenue), 187.80 feet; thence South 70° 58' 56" East, 81.65 feet, to a point on the South line of Woodland Avenue, 50 feet wide; thence South 63° 26' 17" West along said South line of Woodland Avenue, 245.55 feet, to a point on the West line of Cardoni Avenue; thence North 25° 58' 48" West along said West line of Cardoni Avenue, 60.23 feet, to the point of beginning; containing 12.815 square feet or 0.2942 acres more or less;

All of the above mentioned public streets and alley appear in the following subdivision(s) and/or previously adopted Council resolutions:

(1) "Landrest Subdivision of part of Quarter Section 23, Ten Thousand Acre Tract, Villages of Hamtramck and Highland Park," (City of Detroit) Wayne County, Michigan as recorded in Liber 23, Page 60, Plats, Wayne County Records; also

(2) "Oak Park, Adolph Sloman's Subdivision of a portion of Quarter Section 23, Ten Thousand Acre Tract, Hamtramck," City of Detroit, Wayne County, Michigan as recorded in Liber 13, Page 34, Plats, Wayne County Records; also

(3) All that part of Woodland Avenue, 50 feet wide, as opened on February 2, 1909 (J.C.C. page 114);

Be and the same are hereby vacated as public streets and alley and are hereby converted into a public subsurface easement of the full width of the streets and alley, which easement shall be subject to the following covenants and agreements, uses, reservations and regulations, which shall be observed by the owners of said streets and alley and by their heirs, executors, administrators and assigns, forever to wit:

First, said owners hereby grant to and for the use of the public a subsurface easement or right-of-way over said vacated public streets and alley herein above described for the purposes of maintaining, installing, repairing, removing, or replacing underground public utilities such as water mains, sewers, gas lines or mains, telephone, electric light conduits or things usually placed or installed in a public street or alley in the City of Detroit, with the right to ingress and egress at any time to and over said easement for the purpose above set forth.

Second, said subsurface utility easement or right-of-way in and over said vacated streets and alley herein above described shall be forever accessible to the maintenance and inspection forces of the utility companies, or those specifically authorized by them, for the purpose

of inspecting, installing, maintaining, repairing, removing, or replacing any sewer, conduit, water main, gas line or main, or any utility facility placed or installed in the subsurface utility easement or right-of-way. The utility companies shall have the right to cross or use the driveways and yards of the adjoining properties for ingress and egress at any time to and over said subsurface utility easement with any necessary equipment to perform the above-mentioned tasks, with the understanding that the utility companies shall use due care in such crossing or use, and that any property damaged by the utility companies, other than that specifically prohibited by this resolution, shall be restored to a satisfactory condition,

Third, said owners for their heirs further agree that no buildings or structures of any nature whatsoever including, but not limited to, concrete slabs or driveways, retaining or partition walls (except necessary line fence) shall be built or placed upon said subsurface easement, nor any change of surface grade made, without prior approval of the City Engineering Department,

Fourth, that if the owners of said vacated streets and alley shall request the removal and/or relocation of any utilities in said subsurface easement, such owners, shall pay all costs incidental to such removal and/or relocation, unless such charges are waived by the utility owners,

Fifth, that if any utility located in said property shall break or be damaged as a result of any action on the part of said owners or assigns (by way of illustration but not limitation) such as storage of excessive weights of materials or construction not in accordance with Section 3, mentioned above, then in such event said owners or assigns shall be liable for all costs incidental to the repair of such broken or damaged utility, and be it further

Resolved, All that part of Russell Street, 50 feet wide, lying between Woodland Avenue and the City of Highland Park; said part of Russell Street lying westerly of and abutting the west line of the previously vacated (Detroit portion of) Glendale Avenue (50 feet wide; November 8, 1922 — J.C.C. pages 2199-2200); also lying westerly of and abutting the west line of Lot 205; also lying westerly of and abutting the west line of the previously vacated east-west public alley, 16 feet wide (in the block bounded by Russell, Grand Trunk Railroad right-of-way, Woodland and Glendale; November 26, 1912 — J.C.C. page 1677); also lying westerly of and abutting the west line of the north 33.36 feet of Lot 180; also lying easterly of and abutting the

east line of the south 29.80 feet of Lot 18, the north 20.85 feet of Lot 23, and Lot 19 to 22 as platted in "Oak Park, Adolph Sloman's Subdivision of a portion of Quarter Section 23, Ten Thousand Acre Tract, Hamtramck," City of Detroit, Wayne County, Michigan as recorded in Liber 13, Page 34, Plats, Wayne County Records;

Be and the same is hereby vacated as public street and is hereby converted into a public easement of the full width of the street, which easement shall be subject to the following covenants and agreements, uses, reservations and regulations, which shall be observed by the owners of said street and by their heirs, executors, administrators and assigns, forever to wit:

First, said owners hereby grant to and for the use of the public in easement or right-of-way over said vacated public street herein above described for the purposes of maintaining, installing, repairing, removing, or replacing public utilities such as water mains, sewers, gas lines or mains, telephone, electric light conduits or poles or things usually placed or installed in a public street in the City of Detroit, with the right to ingress and egress at any time to and over said easement for the purpose above set forth.

Second, said utility easement or right-of-way in and over said vacated street herein above described shall be forever accessible to the maintenance and inspection forces of the utility companies, or those specifically authorized by them, for the purpose of inspecting, installing, maintaining, repairing, removing, or replacing any sewer, conduit, water main, gas line or main, telephone or light pole or any utility facility placed or installed in the utility easement or right-of-way. The utility companies shall have the right to cross or use the driveways and yards of the adjoining properties for ingress and egress at any time to and over said utility easement with any necessary equipment to perform the above-mentioned tasks, with the understanding that the utility companies shall use due care in such crossing or use, and that any property damaged by the utility companies, other than that specifically prohibited by this resolution, shall be restored to a satisfactory condition,

Third, said owners for their heirs further agree that no buildings or structures of any nature whatsoever including, but not limited to, concrete slabs or driveways, retaining or partition walls (except necessary line fence) shall be built or placed upon said easement, nor any change of surface grade made, without prior approval of the City Engineering Department,

Fourth, that if the owners of said

vacated street shall request the removal and/or relocation of any existing poles or other utilities in said easement, such owners, shall pay all costs incidental to such removal and/or relocation, unless such charges are waived by the utility owners;

Fifth, that if any utility located in said property shall break or be damaged as a result of any action on that part of said owners or assigns (by way of illustration but not limitation) such as storage of excessive weights of materials or construction not in accordance with Section 3, mentioned above, then in such event said owners or assigns shall be liable for all costs incidental to the repair of such broken or damaged utility, and be it further

Resolved, Pursuant to the Court ruling in *Center Line v Michigan Bell Telephone Co.*, 26 Mich. App 659 (1970), aff. 387 Mich. 260 (1972), the Community and Economic Development Department is hereby authorized to process billings from utility companies and others for the relocation of their equipment in connection with this urban renewal project; and further

Provided, That a certified copy of this resolution shall be recorded with the Wayne County Register of Deeds; and be it further

Resolved, The following described City-owned properties are hereby dedicated for public street relocation and widening(s):

JAN. 4, 1989 J.C.C. P65. 21-30 (PAGE 4 OF 5)

Land Dedication For Woodland Avenue Relocation From Russell Street, Westerly To Public Alley, 17 Feet Wide

Land in the City of Detroit, County of Wayne, State of Michigan, being all of Lots 24 and 25 and the southerly 10.16 feet, as measured on the west, and being the southerly 9.15 feet, as measured on the east, of Lot 23 of "Oak Park Adolph Sloman's Subdivision of a Portion of ¼ Sec. 23, 10,000 Acre Tract", as recorded in Liber 13, Page 34 of Plats, Wayne County Records.

Land Dedication For Woodland Avenue Relocation From Cardoni Avenue, Easterly To Public Alley, 17 Feet Wide

Land in the City of Detroit, County of Wayne, State of Michigan, being the South 60.0 feet of the north 96.54 feet, as measured on the west, and being the north 97.57 feet, as measured on the east, of Lot 23 of "Landrest Subdivision of Part of ¼ Sec. 23, 10,000 Acre Tract", as recorded in Liber 23, Page 60 of Plats, Wayne County Records.

Land Dedication For Russell Street Widening Between Caniff And Woodland Avenues

Land in the City of Detroit, County of Wayne, State of Michigan, being part of Lots 26 thru 55, and 58, all in "Oak Park Adolph Sloman's Subdivision of a Portion of ¼ Sec. 23, 10,000 Acre Tract", as recorded in Liber 13, Page 34 of Plats, Wayne County Records, being more particularly described as follows:

Beginning at a point at the intersection of the northerly line of Caniff Avenue, 66 feet wide, and the westerly line of Russell Street, 50 feet wide; thence S.63°17'14"W., along the northerly line of Caniff Avenue, 35.00 feet to a point on a line 35 feet westerly of and parallel to the westerly line of Russell Street; thence N.25°59'03"W., along said parallel line 993.54 feet; thence N.70°58'56"W., 31.49 feet to a point on the southerly line of Woodland Avenue, 50 feet wide; thence N.63°26'17"E., along said southerly line of Woodland Avenue, 57.27 feet to a point on the westerly line of Russell Street, 50 feet wide; thence S.25°59'03"E., along said westerly line of Russell Street, 1015.95 feet to the point of beginning, containing 35,810 square feet or 0.8221 acres more or less.

Land Dedication For Caniff Avenue Widening Between City Line And Oakland Avenue

Land in the City of Detroit, County of Wayne, State of Michigan, being all of Lots 1, 2, 3 and 64, part of Lots 4, 65, 66, 127, 128 and 190, and part of a Vacated Public Alley, 10 feet wide, all in "Kenwood Subdivision of Lots 10, 13, 14 and 15 and all that part of Lots 11 and 12 lying westerly of the D.G.H. & M.R.R., ¼ Sec. 38, 10,000 Acre Tract", as recorded in Liber 15, Page 45 of Plats, Wayne County Records; also all of Lots 1, 2 and 3, 78 thru 84 and 159 thru 165, all in "Lichtenberg's Subdivision of Outlots 19, 20, 21 and 22, ¼ Sec. 38, 10,000 Acre Tract", as recorded in Liber 31, Page 53 of Plats, Wayne County Records; also all of Lots 1 thru 3, 40 thru 45 and 82 thru 87 and part of Lot 4, all in "Stanley and Ackerson Subdivision of Outlots 28 and 29 of ¼ Sec. 38, 10,000 Acre Tract", as recorded in Liber 25, Page 98 of Plats, Wayne County Records, being more particularly described as follows:

Beginning at a point at the intersection of the southerly line of Caniff Avenue, 66 feet wide, and the westerly Right-of-Way line of the Grand Trunk Railroad, said line also being the dividing line between the Cities of Detroit and Hamtramck; thence S.30°58'23"E., 5.01 feet along said westerly line of the Grand Trunk Railroad; thence S.62°59'24"W., 19.82 feet along a line 5 feet southerly of and parallel to Caniff Avenue to a point of curvature; thence 187.80 feet along the arc of a curve to the left having a radius of 685.0 feet, a delta of 15°42'29", and a long chord of 187.21 feet which bears S.55°08'10"W., to a point of

tangency; thence S.47°16'55"W., 215.71 feet to a point of curvature; thence 205.17 feet along the arc of a curve to the right having a radius of 715.0 feet, a delta of 16°26'27", and a long chord of 204.46 which bears S.55°30'08"W., to a point of tangency; thence S.63°43'22"W., 1244.94 feet to a point on the southerly line of Lot 3 of "Stanley and Ackerson Subdivision", recorded in Liber 25, Page 98 of Plats, Wayne County Records, said point being 3.25 feet easterly of the easterly line of Oakland Avenue, 66 feet wide; thence S.8°19'18"E., 10.51 feet to a point on the easterly line of Oakland Avenue; thence N.26°19'51"W., 109.67 feet along said easterly line to a point at the intersection of said easterly line of Oakland Avenue and the southerly line of Caniff Avenue, 66 feet wide; thence along the southerly line of said Caniff Avenue, N.62°59'24"E., 1862.21 feet, to the point of beginning, containing 171,057 square feet or 3.9269 acres more or less.

Land Dedication For Oakland Avenue Widening Between Trowbridge Avenue And City Line

Land in the City of Detroit, County of Wayne, State of Michigan, being part of Lot 49 and part of Vacated Caniff Avenue, 23 feet wide, both in "Callaway and Thomas Subdivision of the Northerly ¼ of the Northerly ½ of ¼ Sec. 37, 10,000 Acre Tract", as recorded in Liber 13, Page 84 of Plats, Wayne County Records; also all of Lots 87 thru 90 and 247 thru 249 and part of Lots 86, 91, 246, 250 and 251 and part of Vacated Caniff Avenue, 23 feet wide, all in "Hunt and Leggett's Subdivision of the South ½ of the South ½ of ¼ Sec. 24, 10,000 Acre Tract", as recorded in Liber 10, Page 40 of Plats, Wayne County Records; also all of Lots 411 thru 414 and part of Lots 408 and 415, all in "Hunt and Leggett's Subdivision of the South ½ of North ½ of South ½ of ¼ Sec. 24, 10,000 Acre Tract", as recorded in Liber 11, Page 3 of Plats, Wayne County Records; also all of Lots 64 thru 67, all in "Woodland Subdivision of the North 20 Acres of the South ½ of ¼ Sec. 24, 10,000 Acre Tract", as recorded in Liber 13, Page 85 of Plats, Wayne County Records, being more particularly described as follows:

Beginning at a point at the intersection of the westerly line of Oakland Avenue, 66 feet wide, and the northerly line of Trowbridge Avenue, 60 feet wide; thence S.57°27'57"W., 9.88 feet along the northerly line of said Trowbridge Avenue; thence 98.63 feet along the arc of a curve to the left, now tangent to the above mentioned line, said curve having a radius of 485.0 feet, a delta of 11°39'04" and a long chord of 98.46 feet which bears N.38°20'08"W.; thence along a line tangent to the above mentioned

curve, N.44°09'40"W., 76.37 feet to a point of curvature; thence 170.53 feet along the arc of a curve to the right with a radius of 548.0 feet, a delta of 17°49'49" and a long chord of 169.85 feet which bears N.35°14'45.5"W.; thence along a line tangent to the above mentioned curve, N.26°19'51"W., 1148.33 feet, said line also being 80 feet westerly of and parallel to the westerly line of Oakland Avenue, 66 feet wide, to a point on the dividing line between the Cities of Detroit and Highland Park; thence N.63°38'51"E., 80.00 feet along said City line to a point on the westerly line of Oakland Avenue, 66 feet wide; thence S.26°19'51"E., along said westerly line of Oakland Avenue, 1484.09 feet to the point of beginning, containing 108,648 square feet or 2.4942 acres more or less.

Adopted as follows:

Yeas — Council Members Cleveland, Collins, Eberhard, Hood, Kelley, Mahaffey, Peoples, Ravitz, and President Henderson — 9.

Nays — None.

JAN. 4, 1989
J.C.C. PGS. 21-30
(PAGE 5 OF 5)

CARTO NO.
42C, 43D,
33F.

CARTO No.
42C, 43D,
33F.

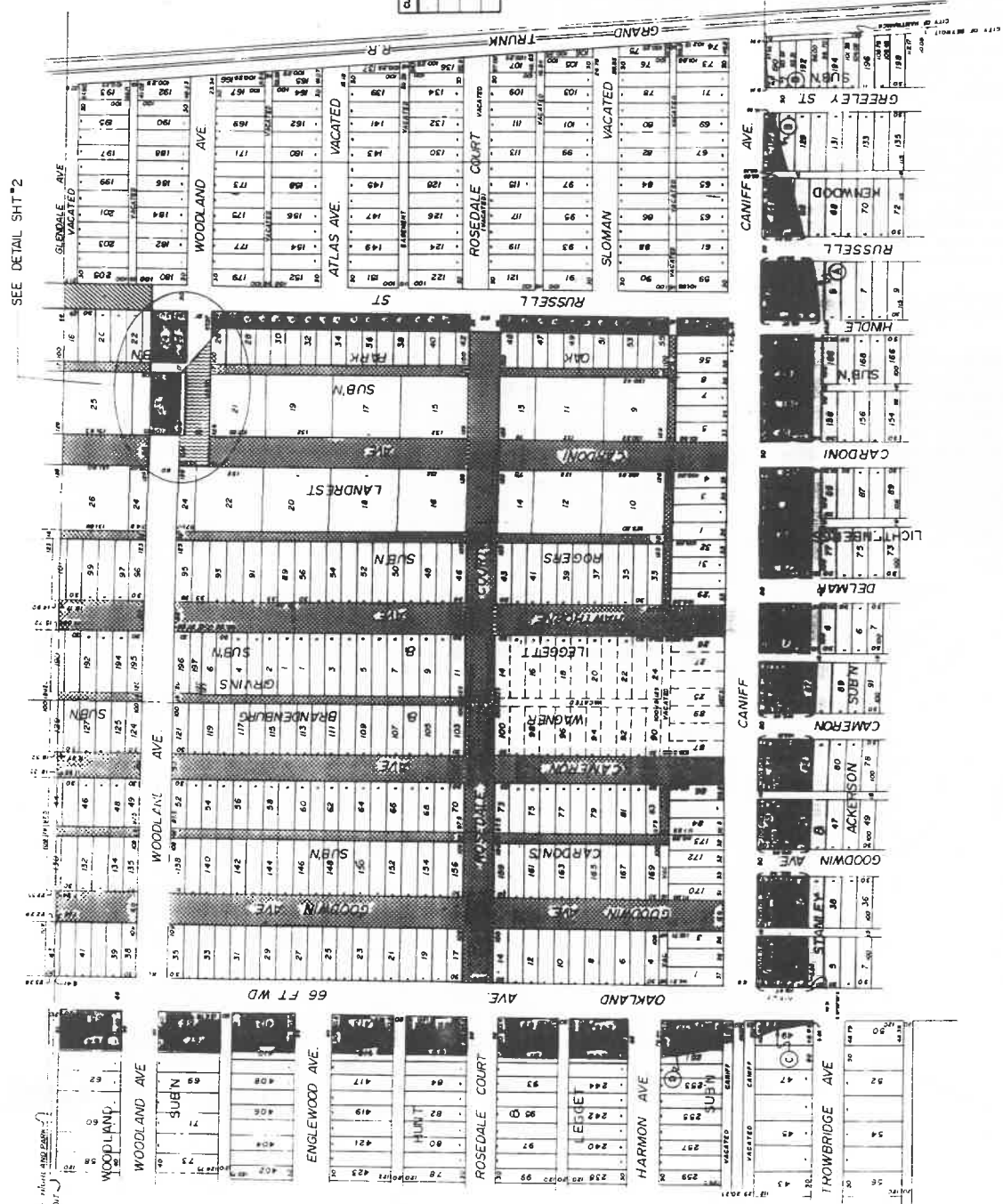
REQUIREMENTS VACATIONS

PROPOSED EASEMENT

REQUISITO DE DEDICACION:

RECORDED SUB SURFACE EASEMENT

0010-1001



CURVE	CHORD	RADIUS	ARC	DELTA	BEARING
A	204.44	715.00	508.17	48° 28' 37"	93° 56' 30" W
B	197.21	688.00	187.80	6° 48' 20"	93° 53' 10" W
C	284.48	688.00	266.53	3° 39' 41"	34° 58' 30" W
D	168.88	540.00	170.55	17° 48' 48"	35 18° 14' 48" W