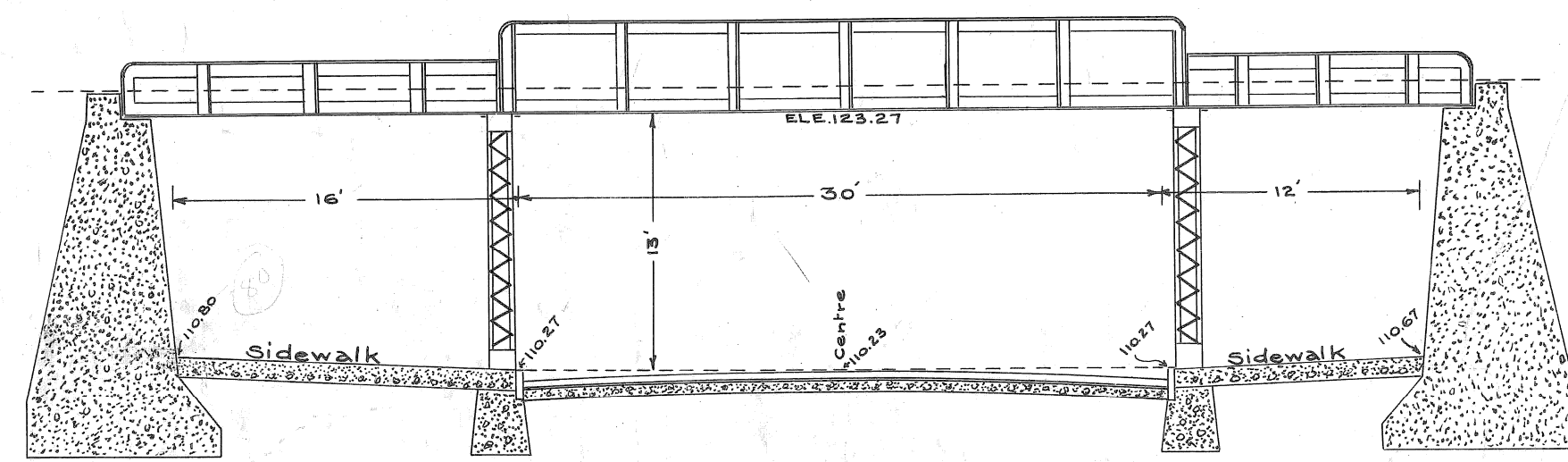


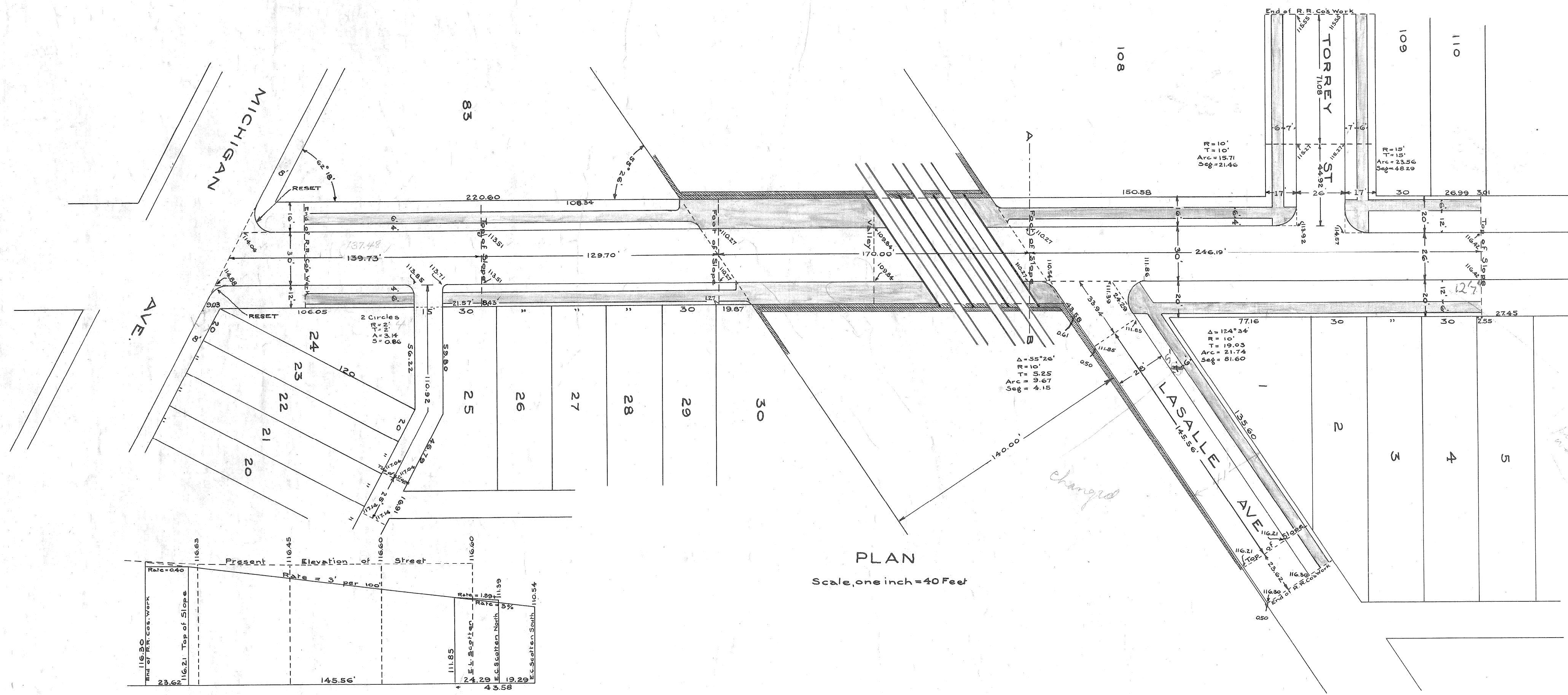
Approved:

City Engineer
Chief Engineer

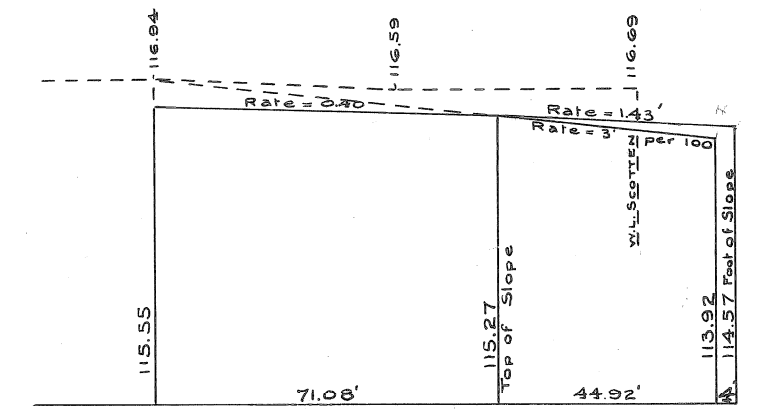
PROPOSED SUBWAY IN SCOTTEN AVENUE UNDER L.S. & M.S. & G.T. R'WYS.



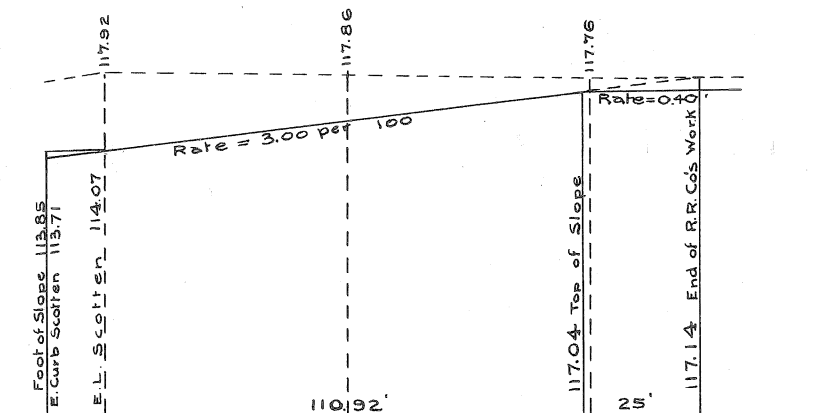
SECTION AT A-B
Scale, one inch = 8 Feet.



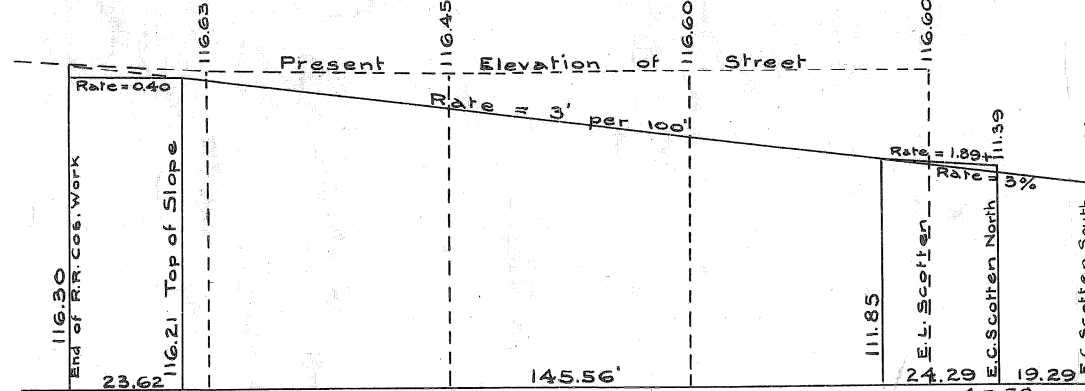
PLAN
Scale, one inch = 40 Feet



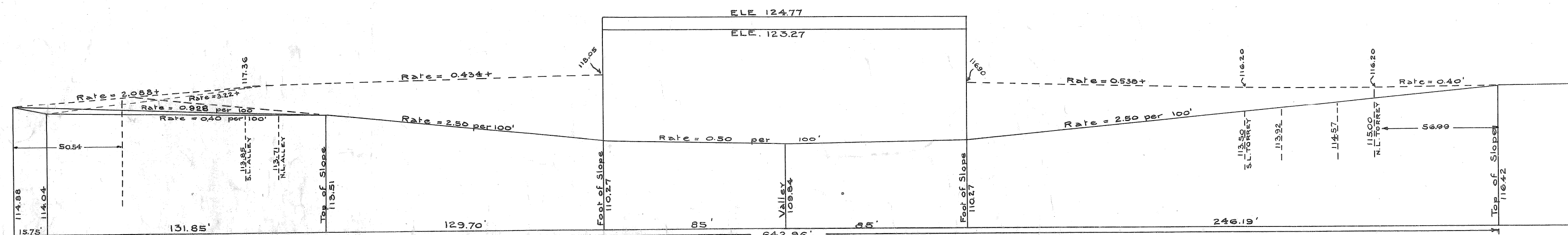
PROFILE OF TORREY



PROFILE OF ALLEY N. OF MICHIGAN AVE.



PROFILE OF LASALLE



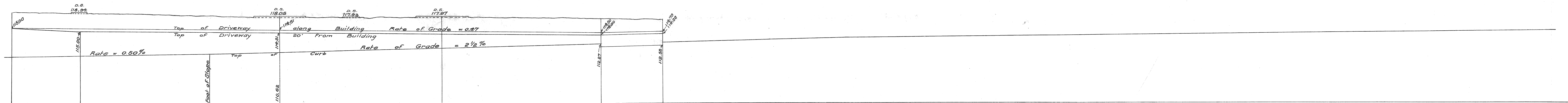
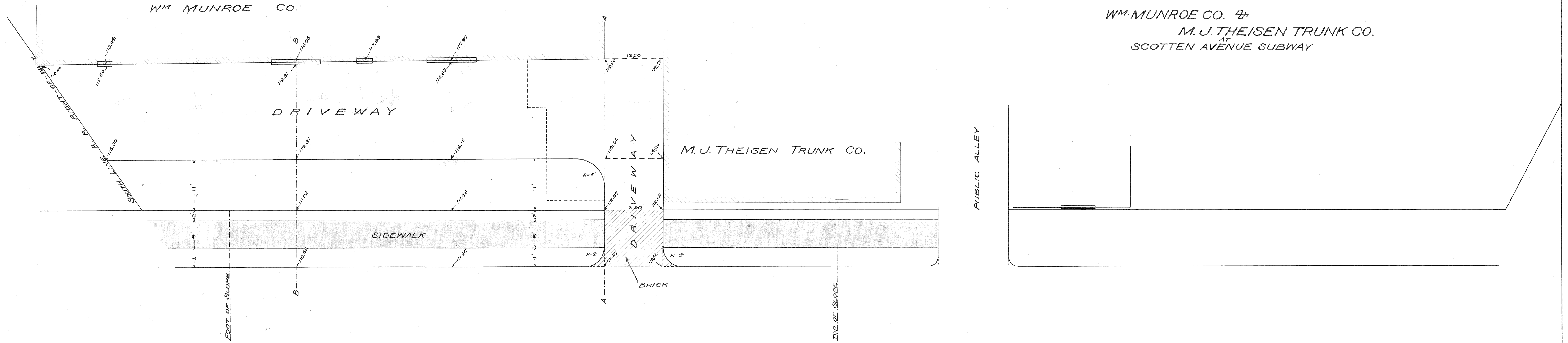
LONGITUDINAL SECTION

Hor. Scale, one inch = 40 Feet
Ver. " " " 10 "

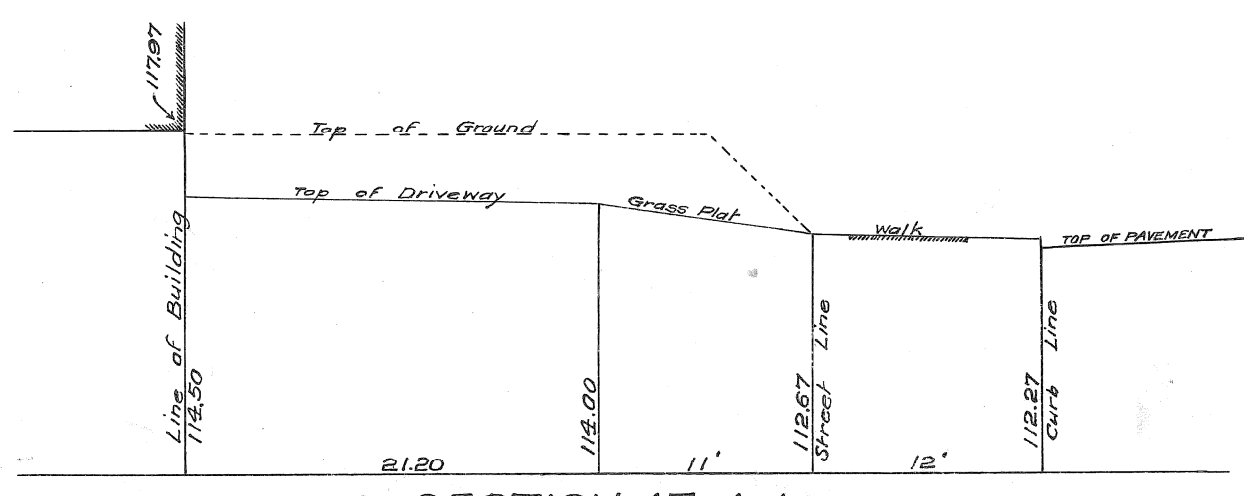
CITY ENGINEER'S OFFICE
GRADE SECTION & PROFILES

City Engineer's Office
A 4-I 18a

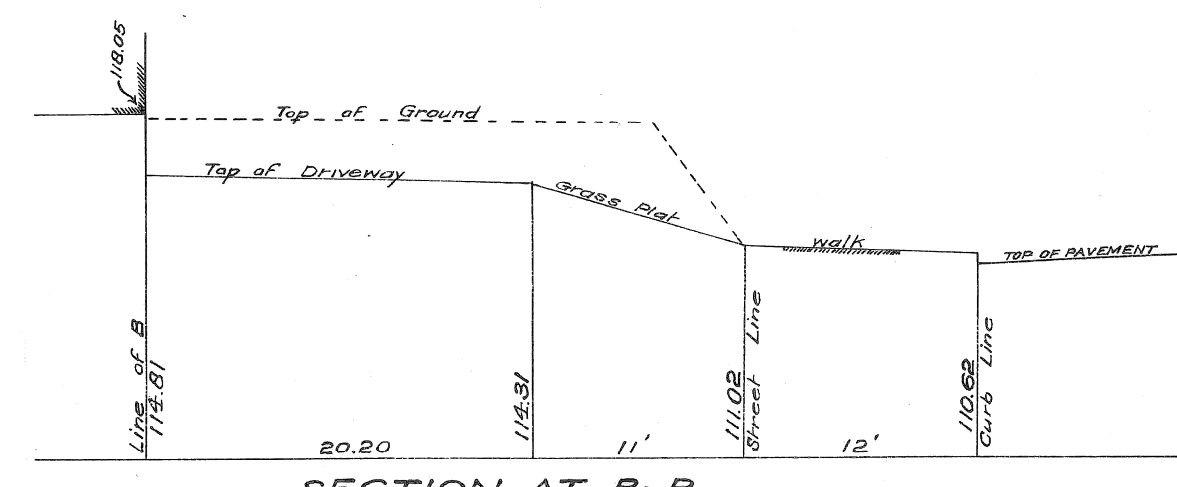
PLAN OF PROPOSED DRIVEWAY FOR
 WM. MUNROE CO. &
 M. J. THEISEN TRUNK CO.
 AT
 SCOTTEN AVENUE SUBWAY



PROFILE SHOWING RELATIVE ELEVATIONS OF CURB, DRIVEWAY AND BUILDING



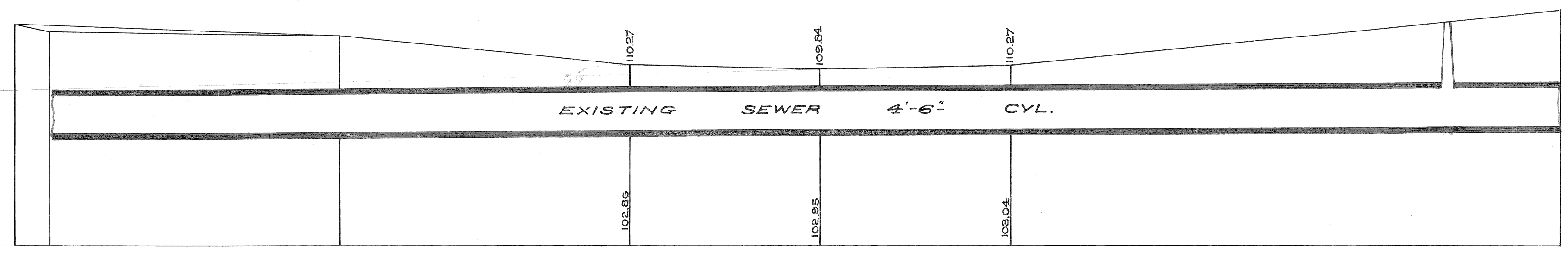
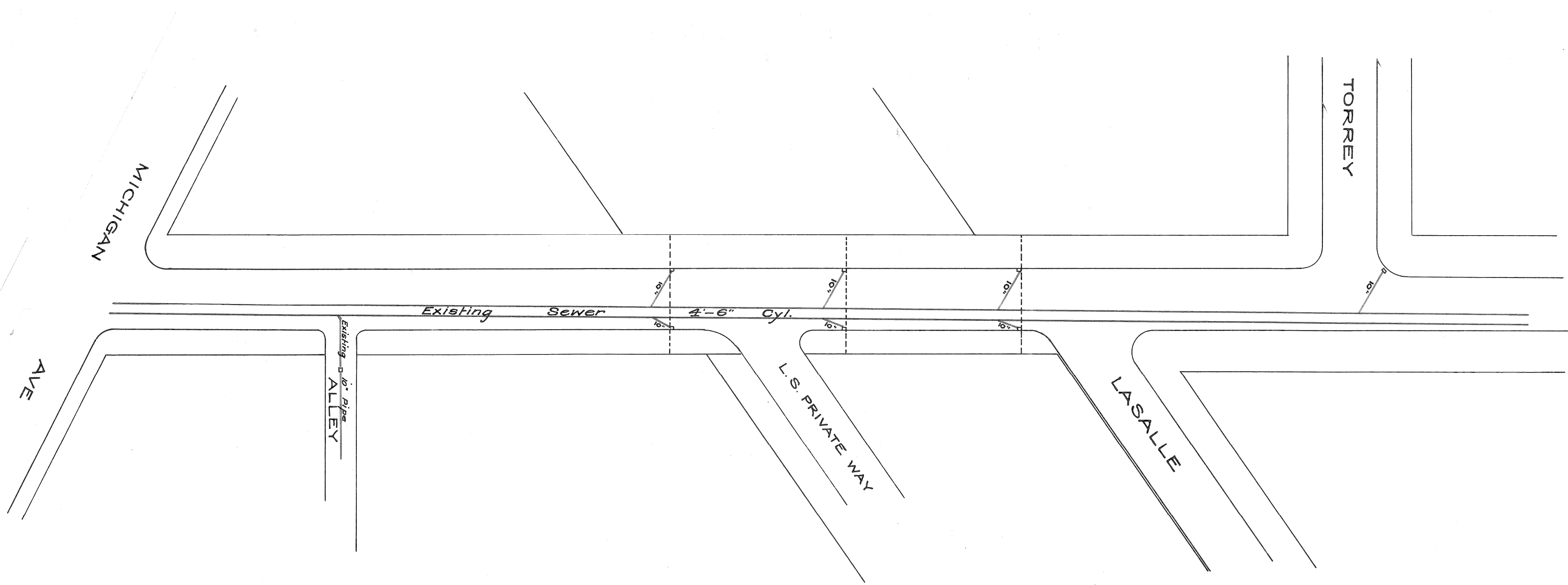
SECTION AT A-A



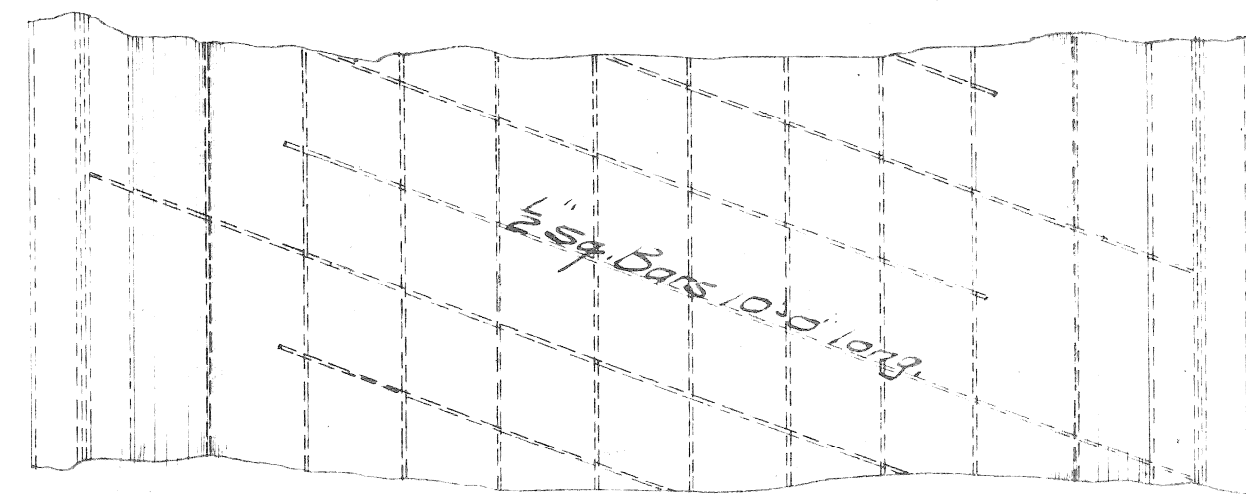
SECTION AT B-B

Ext. for Wall = 1590.04
 155 = 1310.75
 100 = 1210.75
 100 = 1110.75
 100 = 1010.75

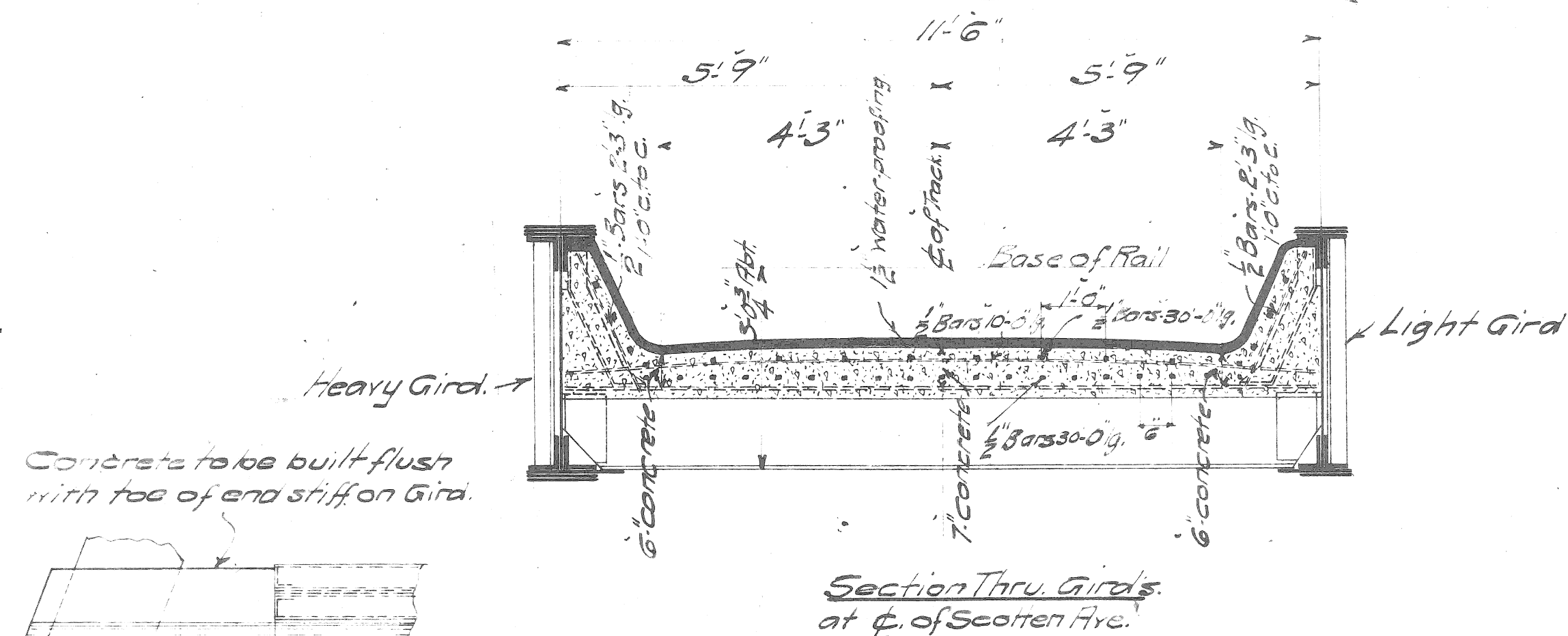
DRAINAGE PLAN
 FOR
 SCOTTEN AVE. SUBWAY
 NORTH OF MICHIGAN AVE.



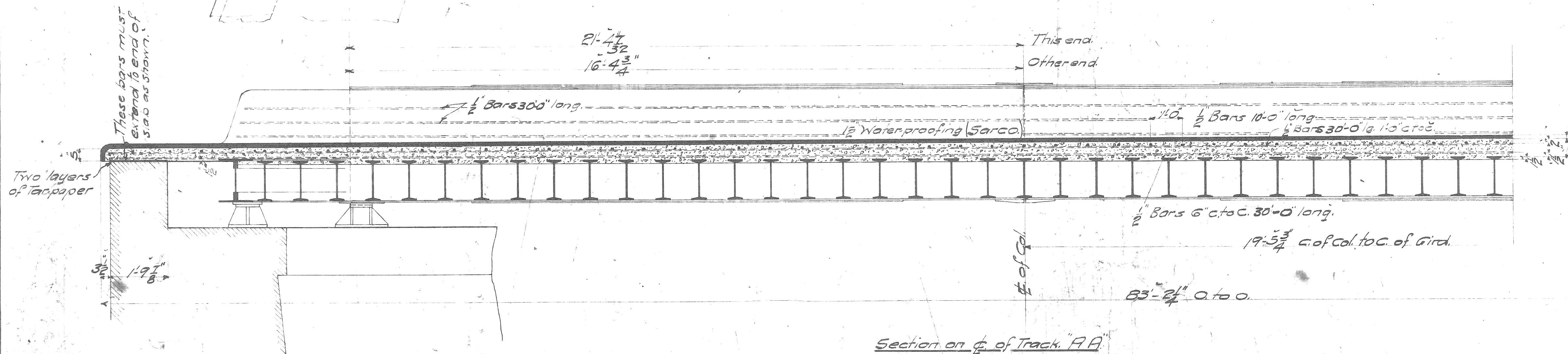
CITY ENGINEER'S OFFICE
 STABLES, STREETS & BRIDGES
 DRAW A DATE 4-1-1908



Showing how
59 Bars 10'-3" long are
to be laid in concrete.



Section Thru Girds
at C. of Scotten Ave.



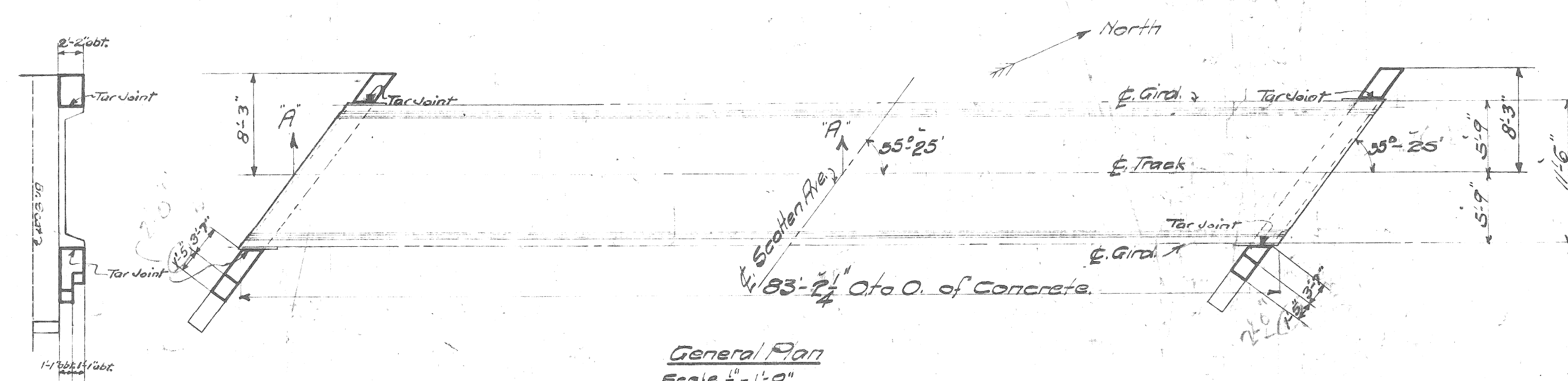
Section on C. of Track 'A'

Material Order

| | |
|----------------------------------|--------------------|
| 34 cu yds concrete | 53.8 cu yds cement |
| 1 1/2 cu yds. Mixture | 15 cu yds sand |
| 78 - 1/2 Sq. Bars - 10'-0" long | 30 - " " stone |
| cut from - 26 - 30'-0" long | 663 |
| 105 - 1/2 Sq. Bars - 30'-0" long | 2677 |
| cut from - 17 - 24'-0" | Total - 3660 |
| 68 - " - " - 2'-3" - " | 320 |

Lap all bars at least 40 times their least dia.
Place transverse bars parallel to abutments
and longitudinal bars parallel to tracks.
1085-Sq. ft. Sarco 1/2 thick.
Bars to be corrugated.

End Elevation Showing Wing Walls
on Parapet Walls



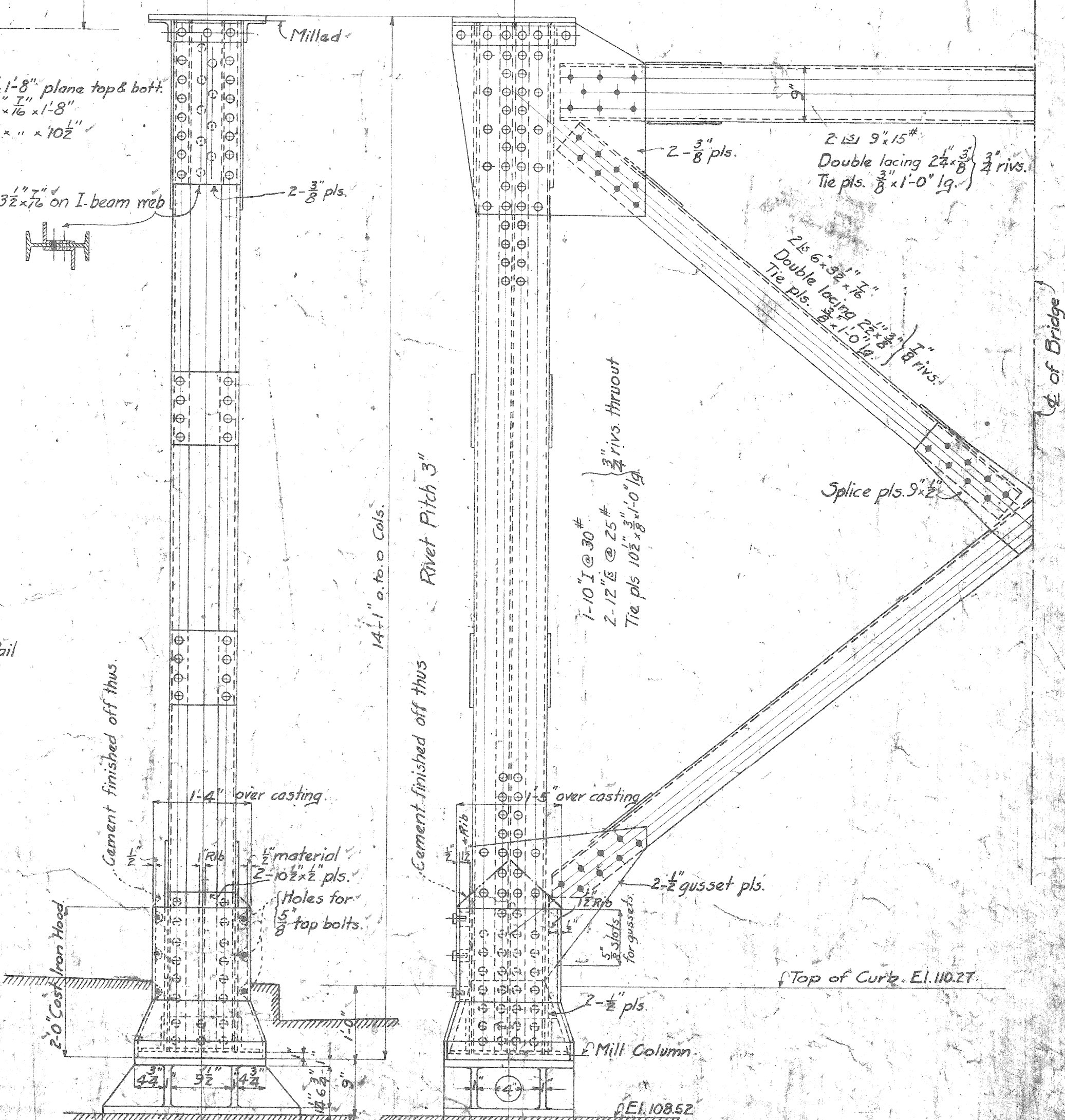
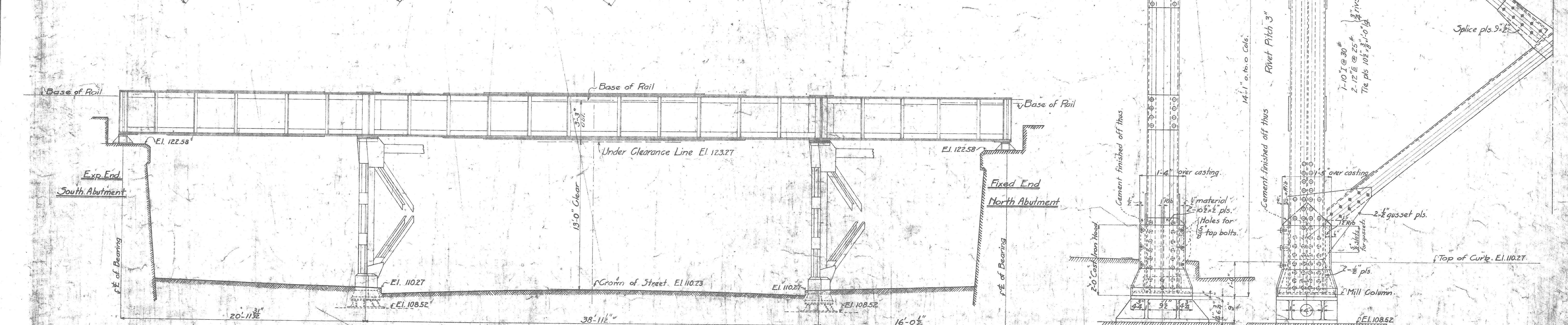
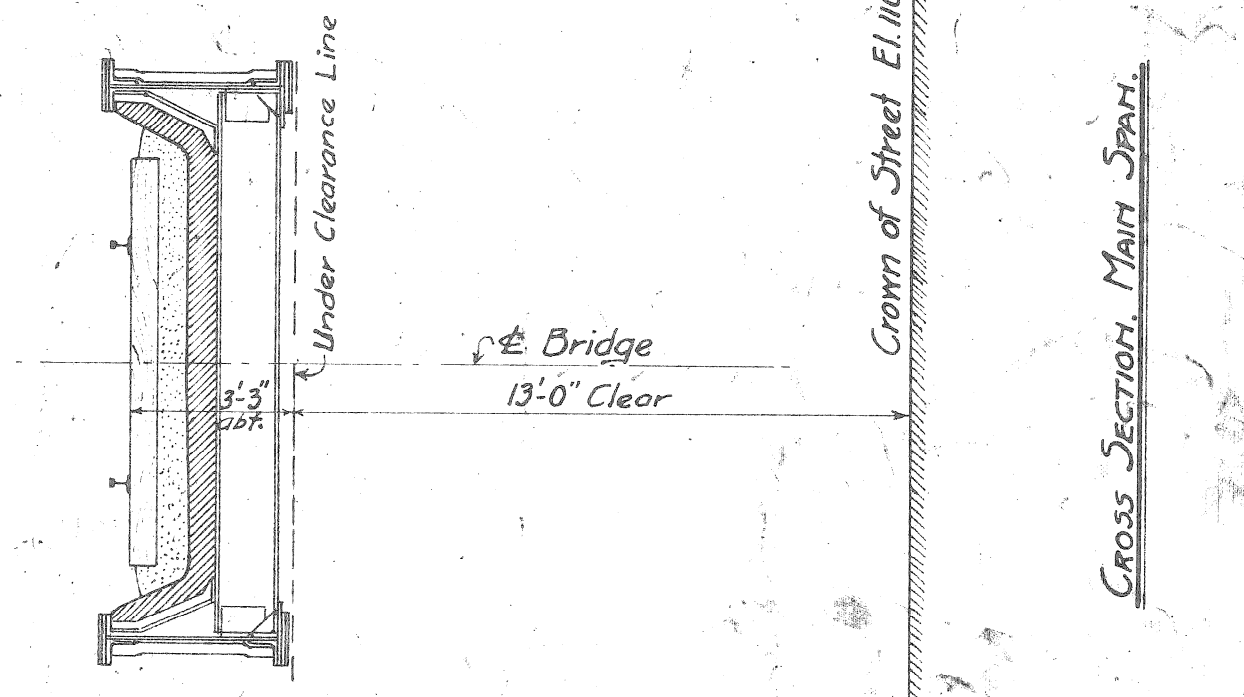
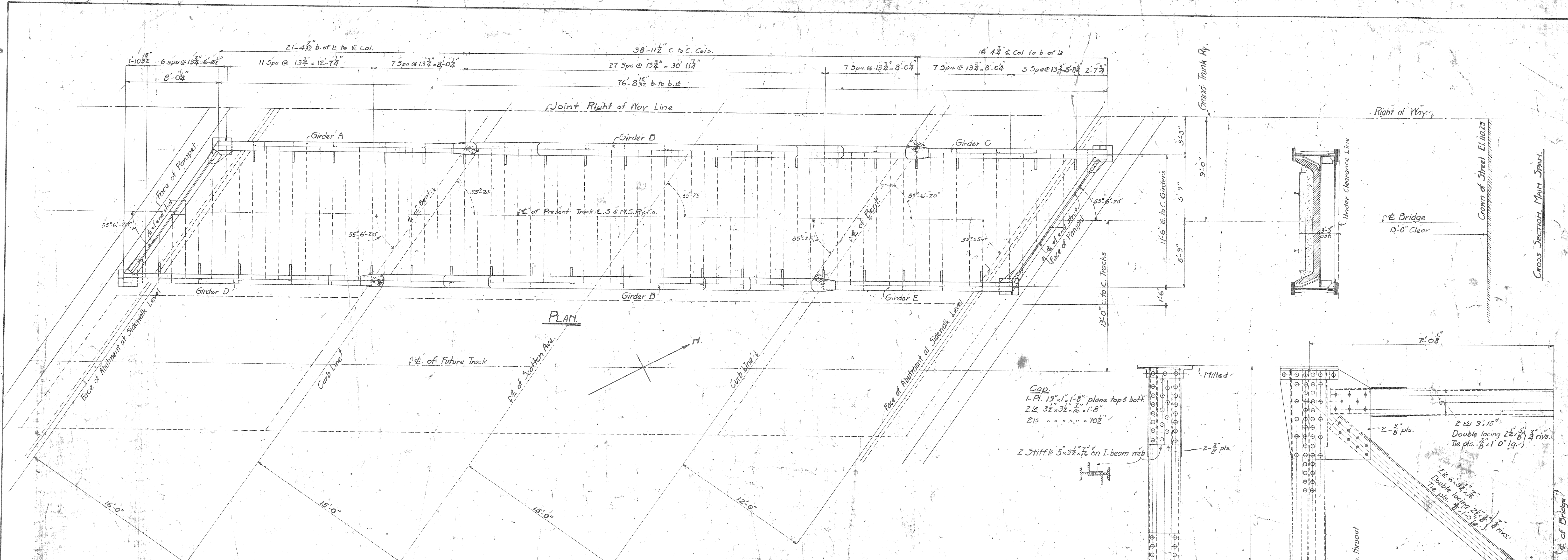
General Plan
Scale 1/8" = 1'-0"

**Bill of Concrete for Wing Walls
on Parapet Walls.**

2 cu yds. concrete 1:3:6 mix.
9 sacks cement.
1 cu yd. sand.
2 cu yds. stone.

Revised 2/23/09
L.S. + M.S. Ry. Bridge Dept. S. Rockwell C.E.
Bridge No. Detroit Branch
Scotten Av. Subway
Detroit Michigan
Concrete Slab
Sheet 1
Scales 1/8" = 1'-0" Jan. - 18 - 1909 Drawing No. B277H6

Revised Aug. 12, 1912
File No. XU28-6



Track Notes
 Alignment Tangent
 Grade Vertical Curve
 Track to Boulevard 55°25'
 Skew " Steelwork 55°6'-20"
 Bridge to be built level grade to be made up in ballast.

Paint Notes
 L.S. & M.S. 1904 Specifications except - Paint for Shop Coat to be mixed in presence of Inspector and to be of the following proportions:
 3/4 lb. of Lamp Black
 25 lbs. of Red Lead
 1 gal. of Boiled Linseed Oil.

ELEVATION
 Scale 3/4" = 1'-0"

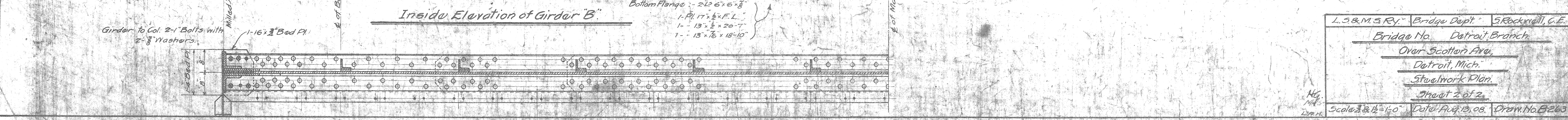
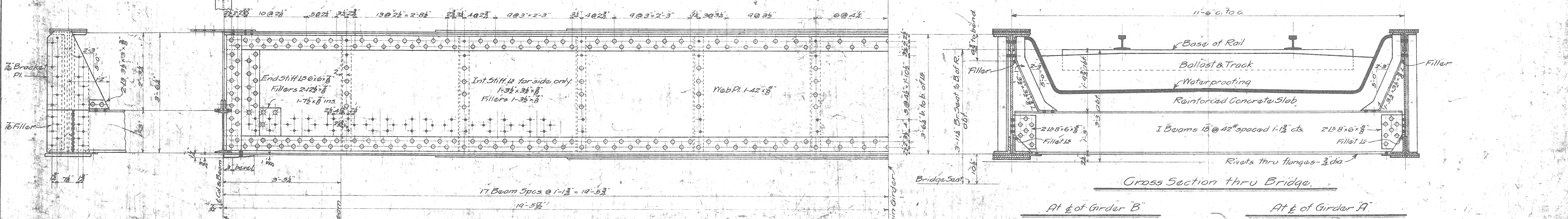
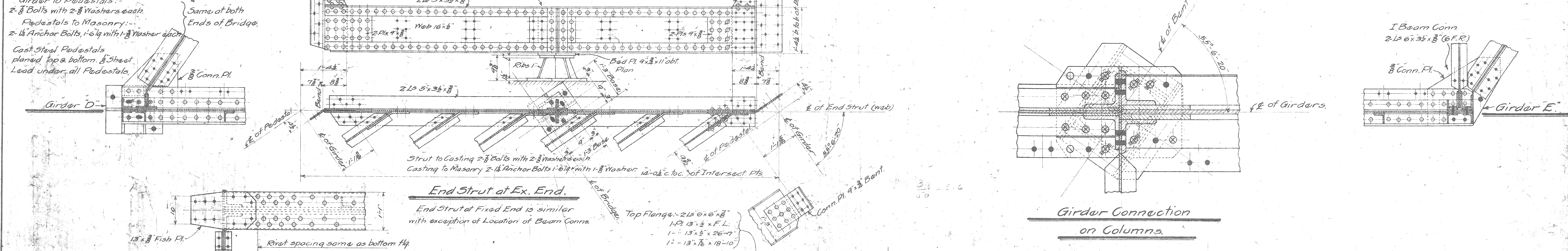
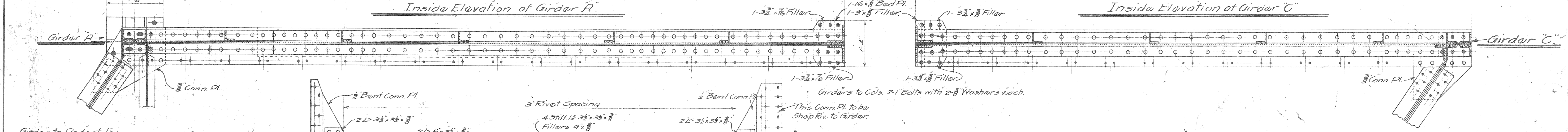
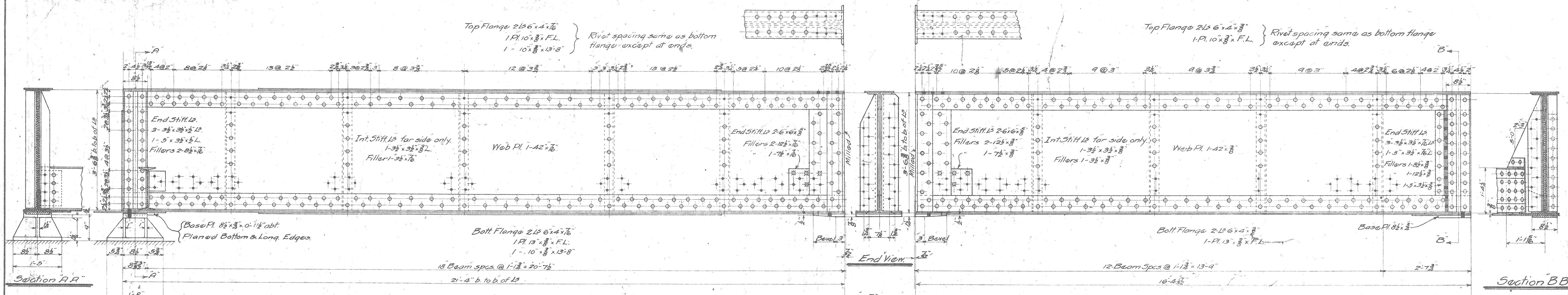
General Notes
 L.S. & M.S. Ry. Co.'s General Specifications of 1904 except as noted below. The following material shall be sub-punched or sub-drilled and reamed to size while assembled. All material composing Girder Flanges, End Stiffeners, and Web Plates where other reamed material is attached. Also Column Shafts where I-Beams and Channels connect directly to each other. Sub-drill all material over 3/8" thick except bracing and minor details. Field connections to be reamed to template as per specifications. Rivets: 3/8" Dia. except as noted. Loading: Coopers Class F40, 60000 Axle Load for floor. Impact percentage = $\frac{v^2}{100 + v^2}$ where v = velocity in miles per hr = 30. L = loaded length in ft.

Cols. to Pedestals:
 4-1" bolts each with 2-3/8" washers.
Pedestals to Masonry:
 12-1/4" bolts x 2'-0" lg.
 Each with 1-3/8" washer.
 Cast steel pedestals to be planed top & bott.
 5 Sheet lead under all pedestals.
 Cast iron heads to be assembled on to Col. bases at shops to insure fit.

Base:
 1 base pl. 20"x1'-1-8" Plane top & bott.
 2 " E. 6"x3 1/2" x 1'-9"
 2 " x 18" x 10 1/2"
 2 " x 18" x 7"

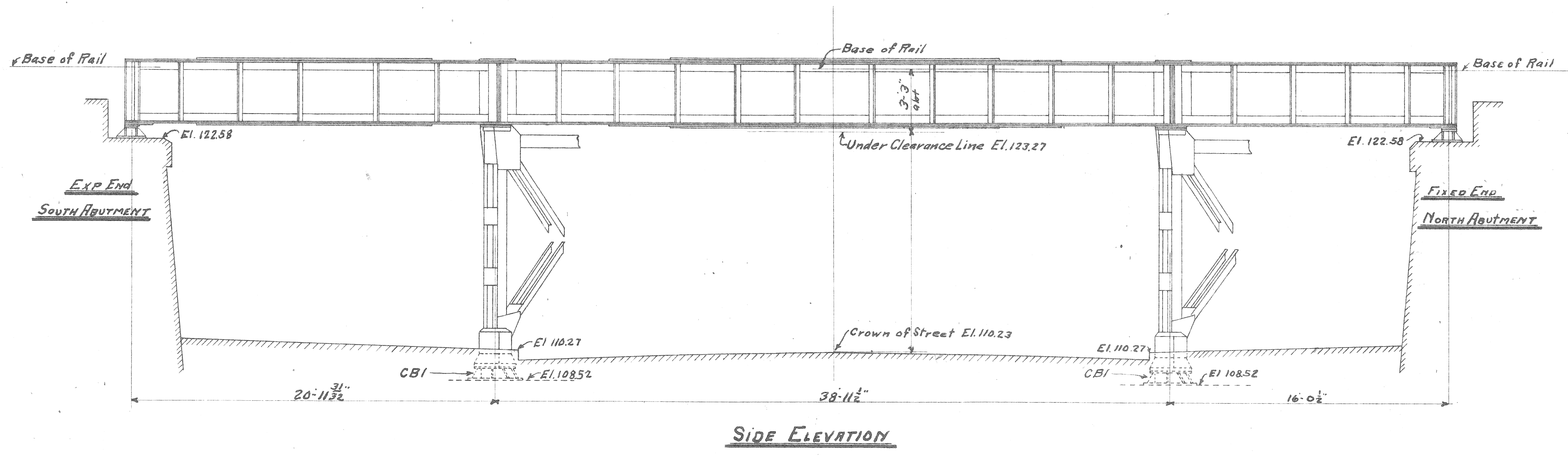
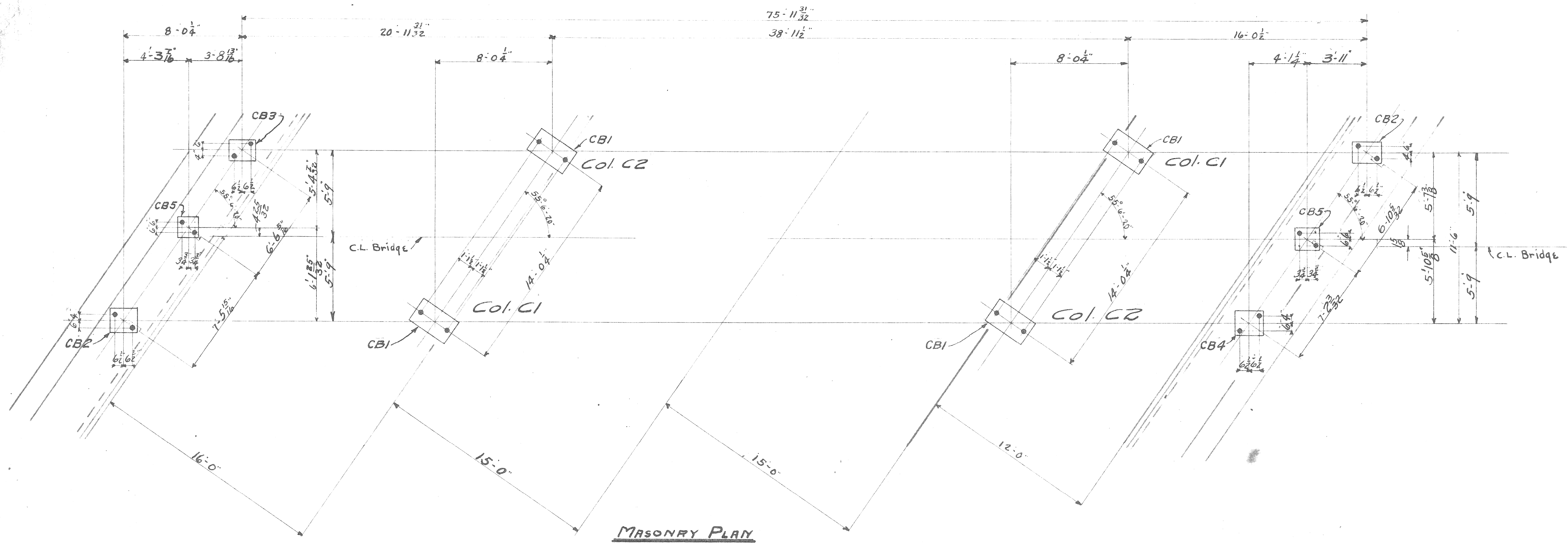
| | | |
|---------------------|----------------|-------------------|
| L.S. & M.S. Ry. | Bridge Dept. | J. Rockwell, C.E. |
| Bridge No. | Detroit Branch | |
| Scotten Ave. Subway | | |
| Detroit, Michigan | | |
| Steelwork Plan | | |
| Sheet 1 of 2 | | |
| Scale as shown | Aug 24, 08. | Draw No. 22637 |

File XU28-7



| | | |
|---------------------------|--------------------|-------------------|
| L.S. & M.S. Ry. | Bridge Dept. | G. Rockwell, C.E. |
| Bridge No. Detroit Branch | | |
| Over Scatter Ave. | | |
| Detroit, Mich. | | |
| Steelwork Plan. | | |
| Sheet 2 of 2 | | |
| NG. | Scale 3/8" = 1'-0" | Date Aug. 15, 08. |
| 1244 | | Draw. No. B2637 |

File XU 28-8 Br. # 4



Paint Note
 LS & MS 1904 Specifications except
 Paint for Shop Coat to be mixed in presence
 of Inspector and to be of the following
 proportions
 3/4 lb of Lamp Black
 25 lbs of Red Lead
 1 gal of Boiled Linseed Oil

Bridge over Scotten Avenue
 Detroit Mich. Detroit Branch L.S. & M.S.Ry.
 Masonry Plan

RIVETS DIAM. UNLESS OTHERWISE NOTED.
 OPEN HOLES DIAM.
 MADE BY W.A.W. CHECKED BY E.L. DATE 11-14-08
 FORT PITT BRIDGE WORKS,
 CANONSBURG, PENNA.

Approved
 W.S.M.S.
 2/23/08
 B.R.W.
 2/23/08
 248 926
 2/23/08

APPROVED THE _____
 BY _____

