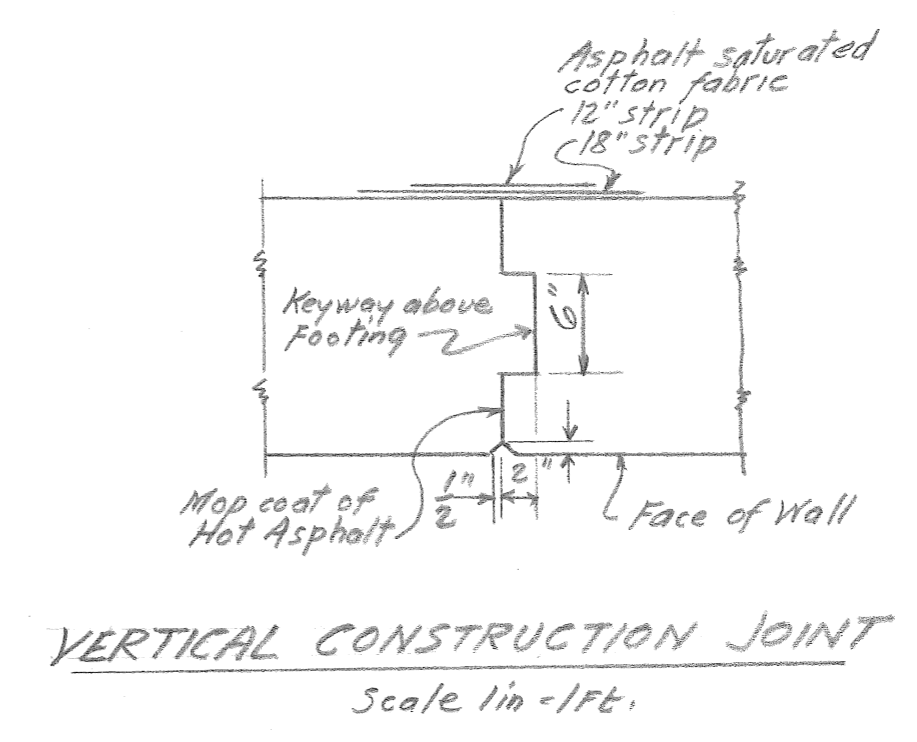
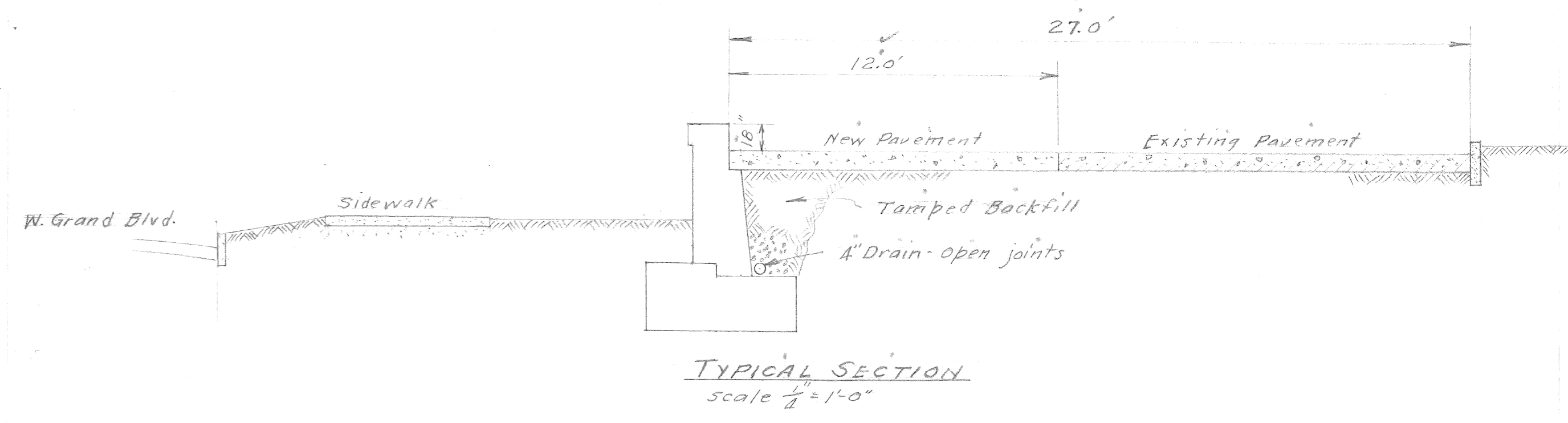


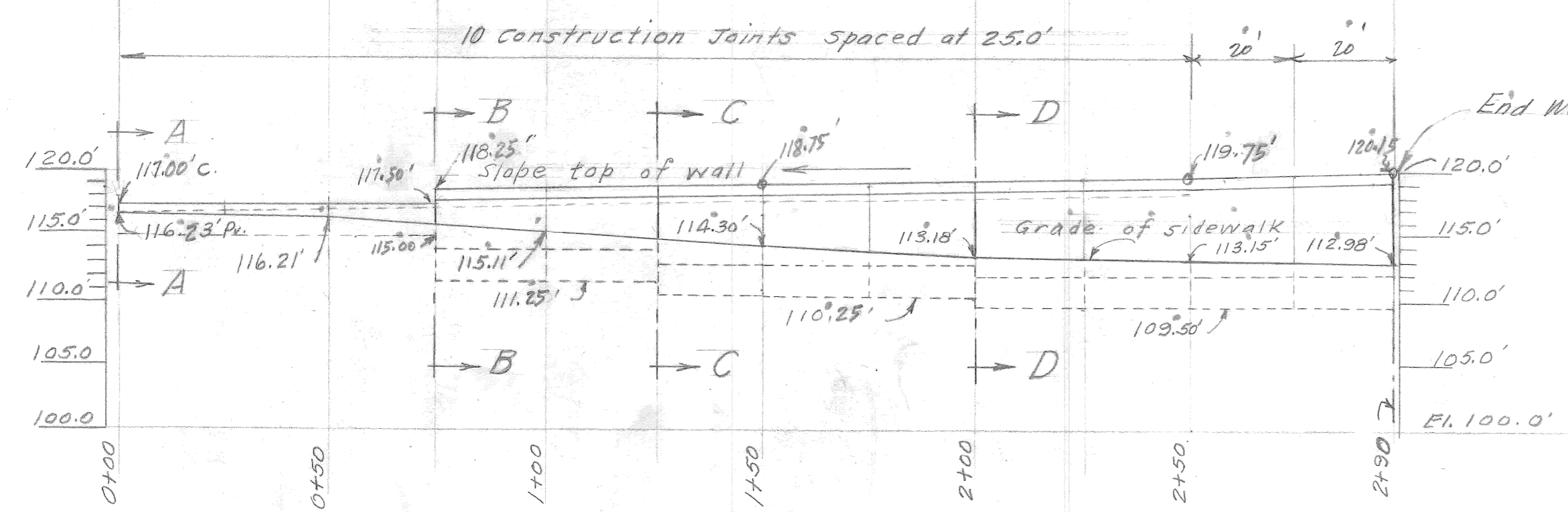
PLAN
Scale 1" = 30'



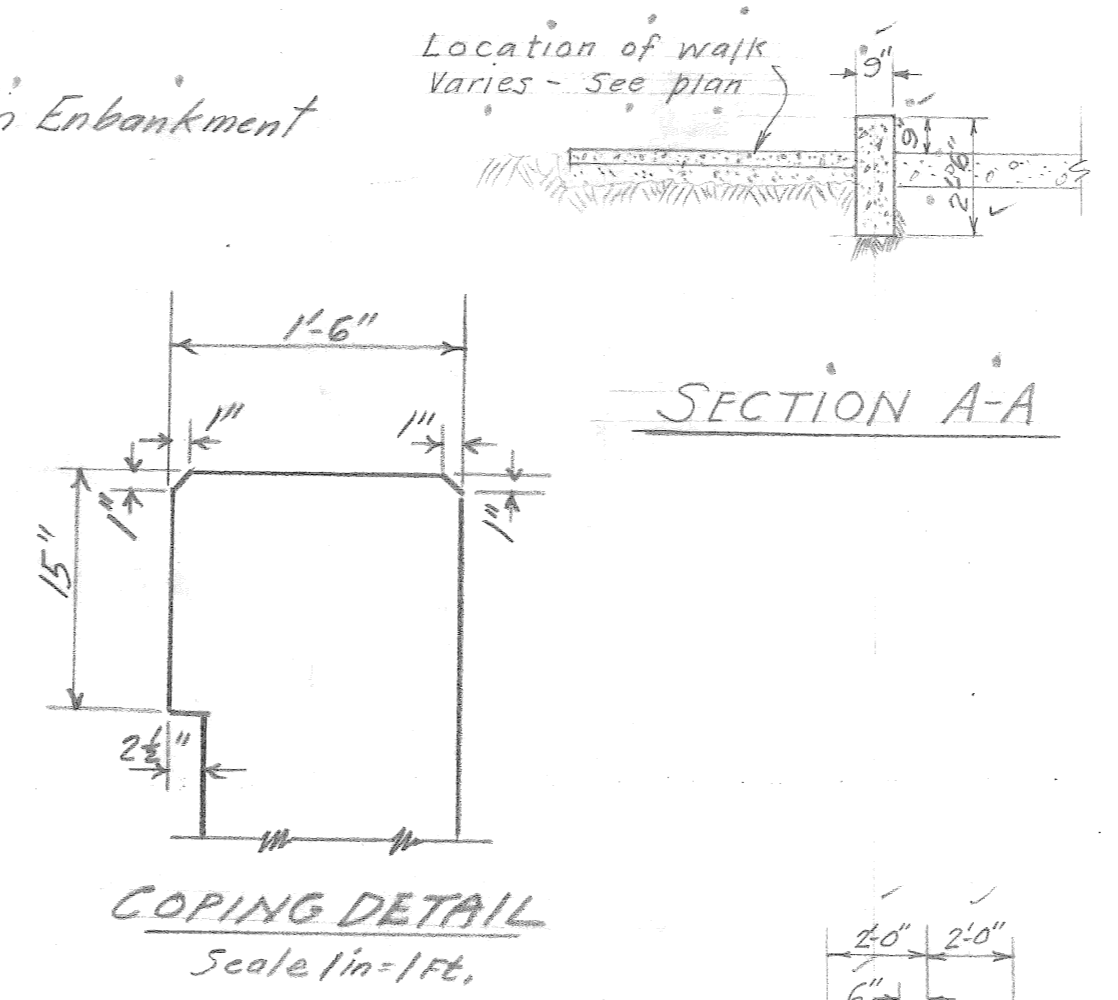
VERTICAL CONSTRUCTION JOINT
Scale 1/4" = 1'-0"



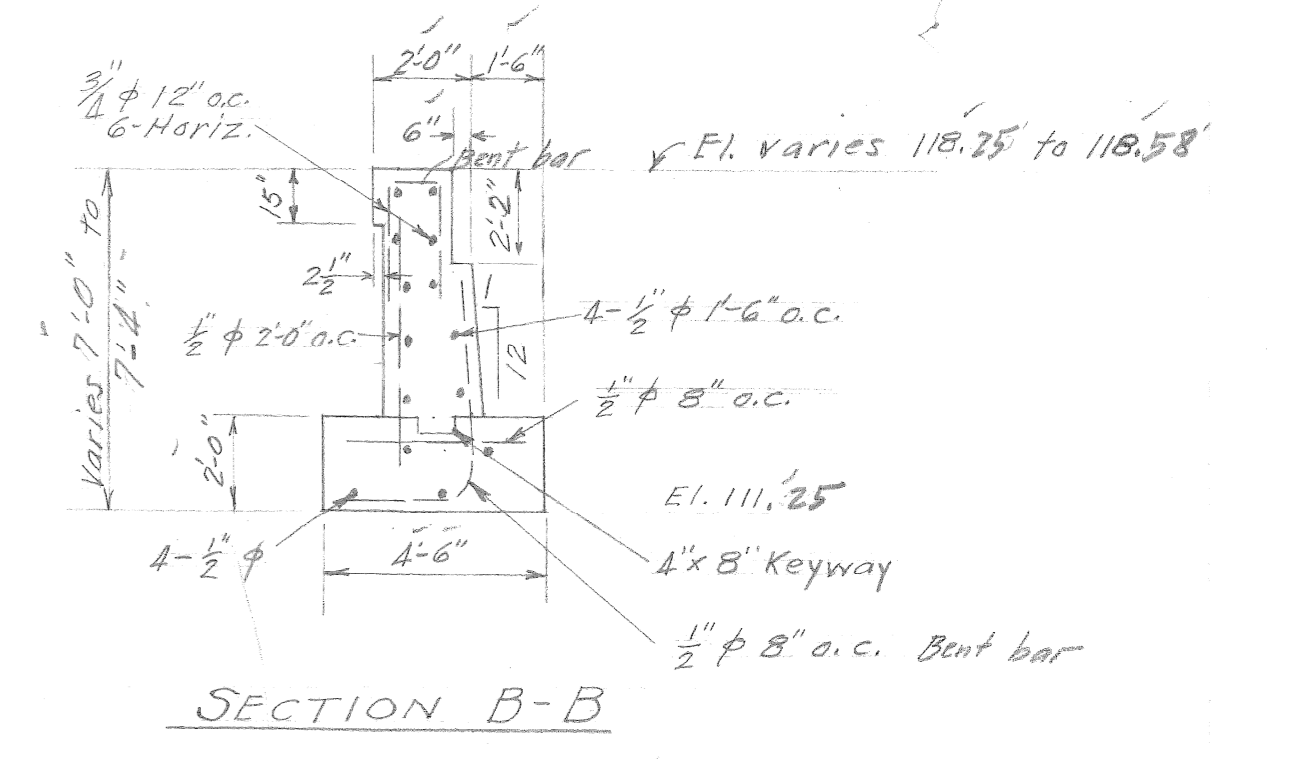
TYPICAL SECTION
Scale 1/4" = 1'-0"



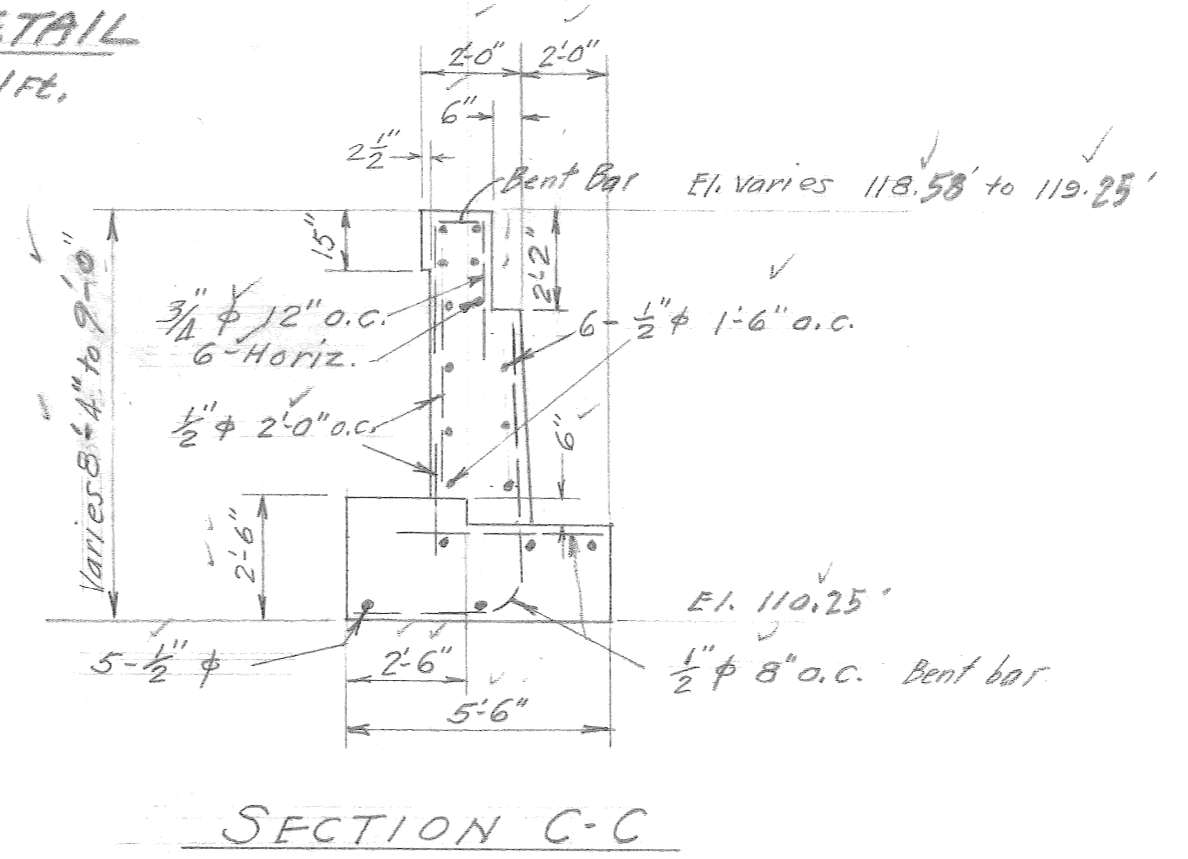
ELEVATION
Scale Vert 1" = 10' Horiz. 1" = 30'



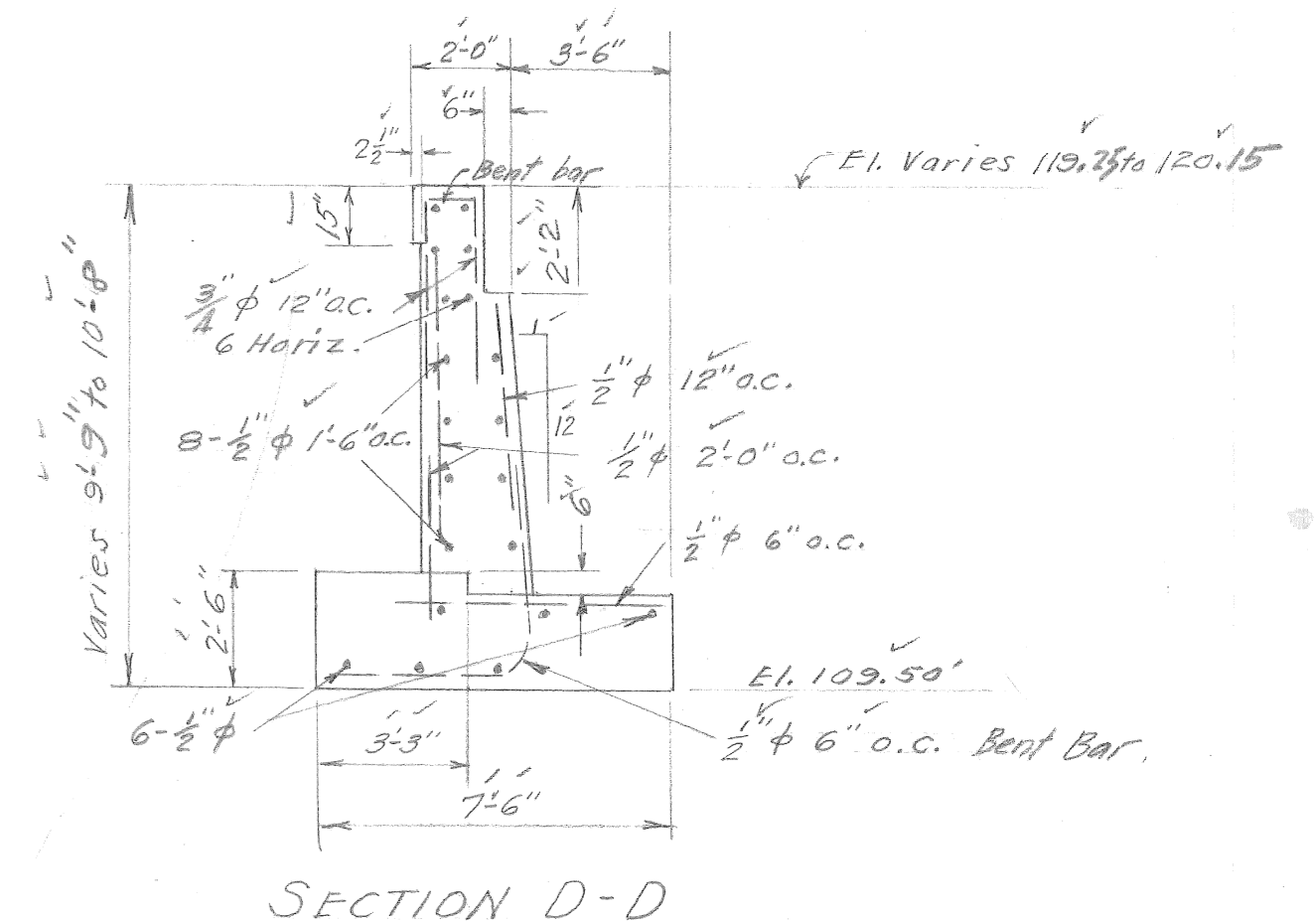
SECTION A-A
COPING DETAIL
Scale 1/4" = 1'-0"



SECTION B-B



SECTION C-C



SECTION D-D

ESTIMATE OF QUANTITIES	
Excavation	600 Cu. Yds.
Concrete in Retaining Wall	240 Cu. Yds.
Reinforcing Steel	11000 lbs.
Paving (5" To Sta. 2+58)	350 Sq. Yds.
Backfill	145 Cu. Yds.
Waterproofing	1600 Sq. Ft.
4" Drain Tile	215 Lin. Ft.
New sidewalk	360 Sq. Ft.

NOTE:
Exposed faces of Concrete shall be rubbed smooth immediately after forms have been removed.
All concrete shall class "A" mix 1, 2, 3. - Back of walls and vertical construction joints to receive two brush coats of Asphalt Waterproofing. - 4" Drain tile joints to be covered with tar paper and connected with nearest sewer outlet.

NOTED BY	DESCRIPTION	DRN	CK'D	AP'VD	DATE

DESIGNED BY	APPROVED:
R.F.M. for State Fair G.S.	J. L. Barton
DRAWN BY	W. J. Warron
P. M. Perkins	
TRACED BY	ENGINEER OF DESIGN
	G. P. Thompson
CHECKED BY	CITY ENGINEER
J. L. Barton	

RETAINING WALL
FOR WIDENED DRIVEWAY OF WALL CHEMICAL and CARBOLOY Co.
ON W. SIDE OF W. GRD. BLVD. BETWEEN MYRTLE AND M.C.R.R.
Scale 1/4" = 1'-0", Except as noted.

CITY OF DETROIT DEPARTMENT OF PUBLIC WORKS CITY ENGINEERS OFFICE	
SHEET 1 OF 1 SHEETS	CONTRACT
DRWG No C-381	

File XU27-1