

- LEGEND**
- Sign Post
  - Wood Pole
  - ⊕ Fire Hydrant
  - Mail Box
  - Pole with Guy
  - Pole with Light
  - ⊙ Traffic Signal
  - ⊠ Telephone on Pole

Scale : 1" = 30'

COORD	DESCRIPTION	DRN	CK'D	AP'D	DATE

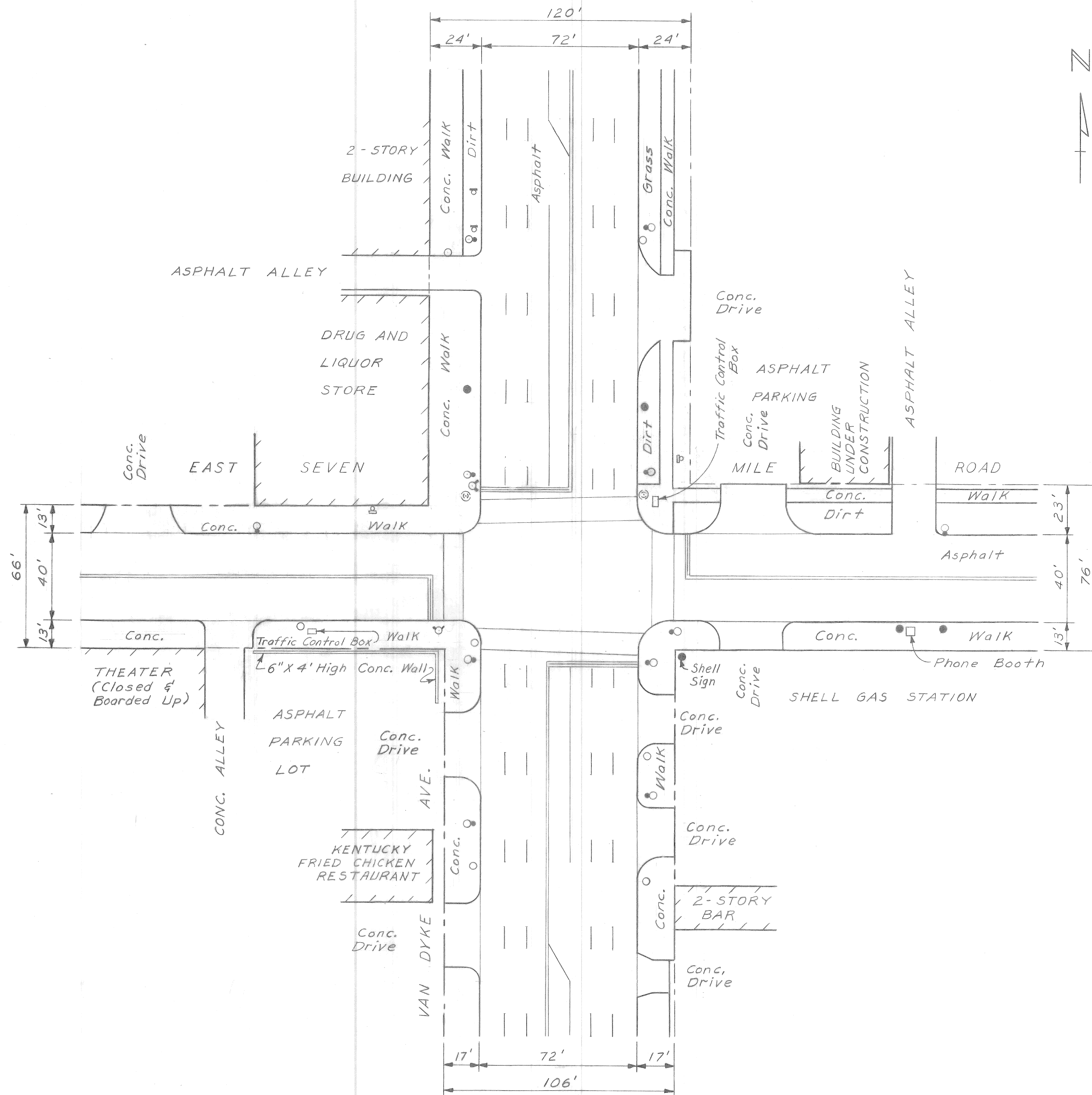
REVISIONS LOCATED BY COORDINATES ON SHEET

DESIGNED BY	N. Woroski	APPROVED:	
DRAWN BY		ENGINEER OF STREETS	
TRACED BY		HIGHWAY ENGINEER	
CHECKED BY			

**CITY OF DETROIT**  
 CITY ENGINEERING DIVISION - D. P. W.  
 BUREAUS OF STREETS AND HIGHWAYS  
 FOR

WYOMING AVE. - W. McNICHOLS ROAD INTERSECTION

SHEET	1	OF	8	SHEETS
CONTRACT NO.		ASSIGNMENT NO.		
DATE	Sept. 19, 1984			



- LEGEND**
- Sign Post
  - Wood Pole
  - ⊕ Fire Hydrant
  - Mail Box
  - ⊙ Pole with Guy
  - ⊙ Pole with Light
  - ⊙ Traffic Signal
  - ⊙ Parking Meter
  - ⊙ Telephone on Pole

DESCRIPTION	DRN	CK'D	AP'D	DATE
REVISIONS				

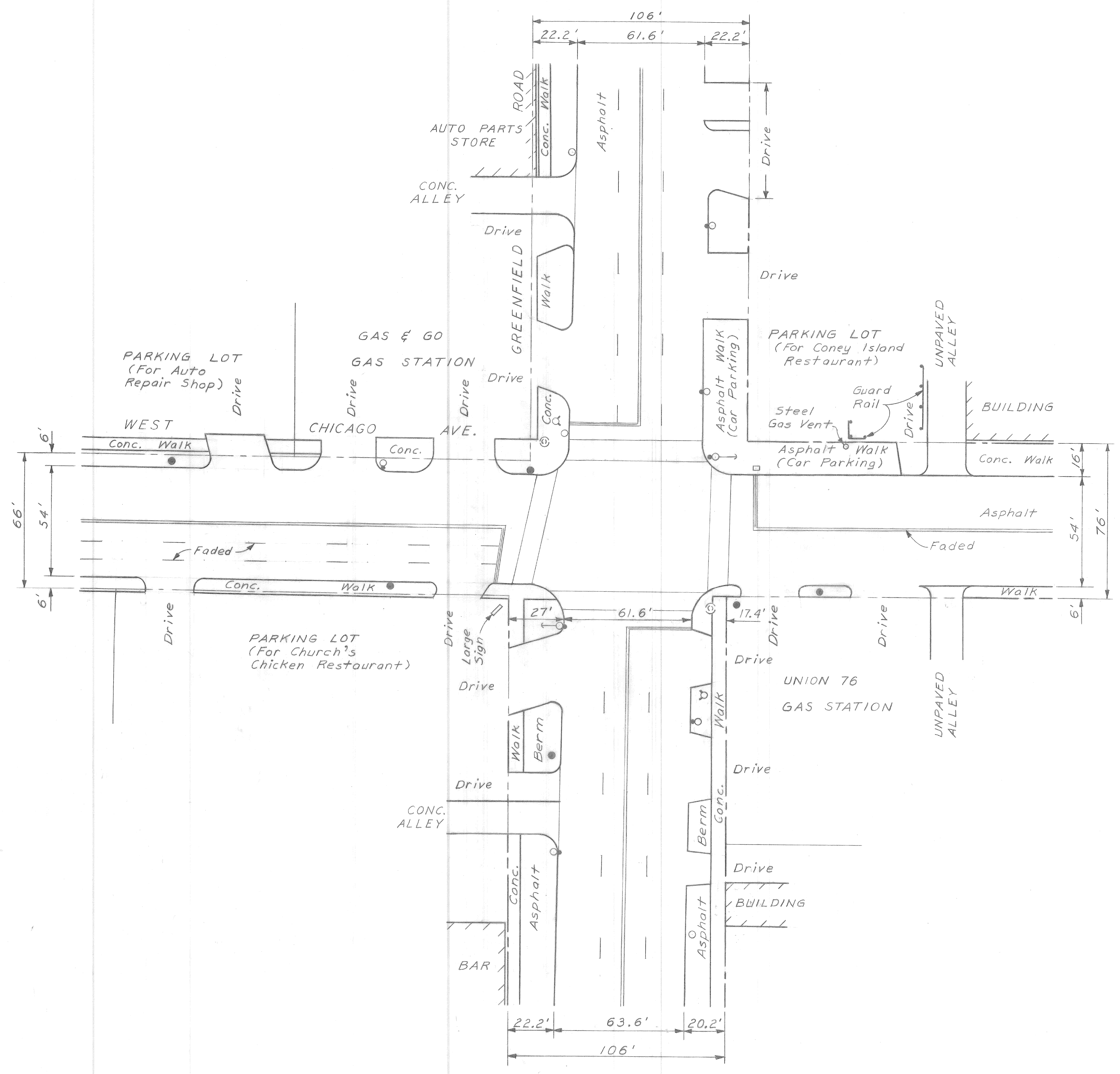
DESIGNED BY		APPROVED:	
DRAWN BY	N. Woroski	ENGINEER OF STREETS	
CHECKED BY		ASSISTANT CITY ENGINEER	
FINAL REVIEW		CITY ENGINEER	

**CITY OF DETROIT**  
 DEPARTMENT OF PUBLIC WORKS  
 CITY ENGINEERS OFFICE  
 BUREAU OF PAVING DESIGN

VAN DYKE - E. SEVEN MILE ROAD INTERSECTION

DETAIL STANDARD NO.	
DRAWING NO.	2 / 8
SCALE	1" = 30'
DATE	Sept. 7, 1984





**LEGEND**

- Sign Post ●
- Wood Pole ○
- Fire Hydrant ⊕
- Mail Box □
- Pole with Guy ⊕
- Pole with Light ⊙
- Traffic Signal ⊙

DESCRIPTION	DR'N	CK'D	AP'VD	DATE
REVISIONS				

DESIGNED BY	
DRAWN BY	N. Woroski
CHECKED BY	
FINAL REVIEW	

APPROVED:	
ENGINEER OF STREETS	
ASSISTANT CITY ENGINEER	
CITY ENGINEER	

**CITY OF DETROIT**  
 DEPARTMENT OF PUBLIC WORKS  
 CITY ENGINEERS OFFICE  
 BUREAU OF PAVING DESIGN

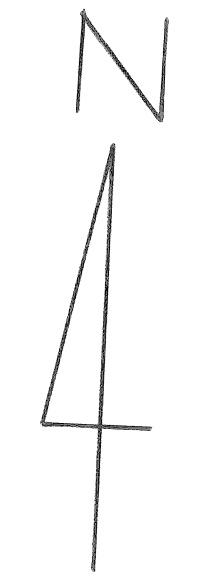
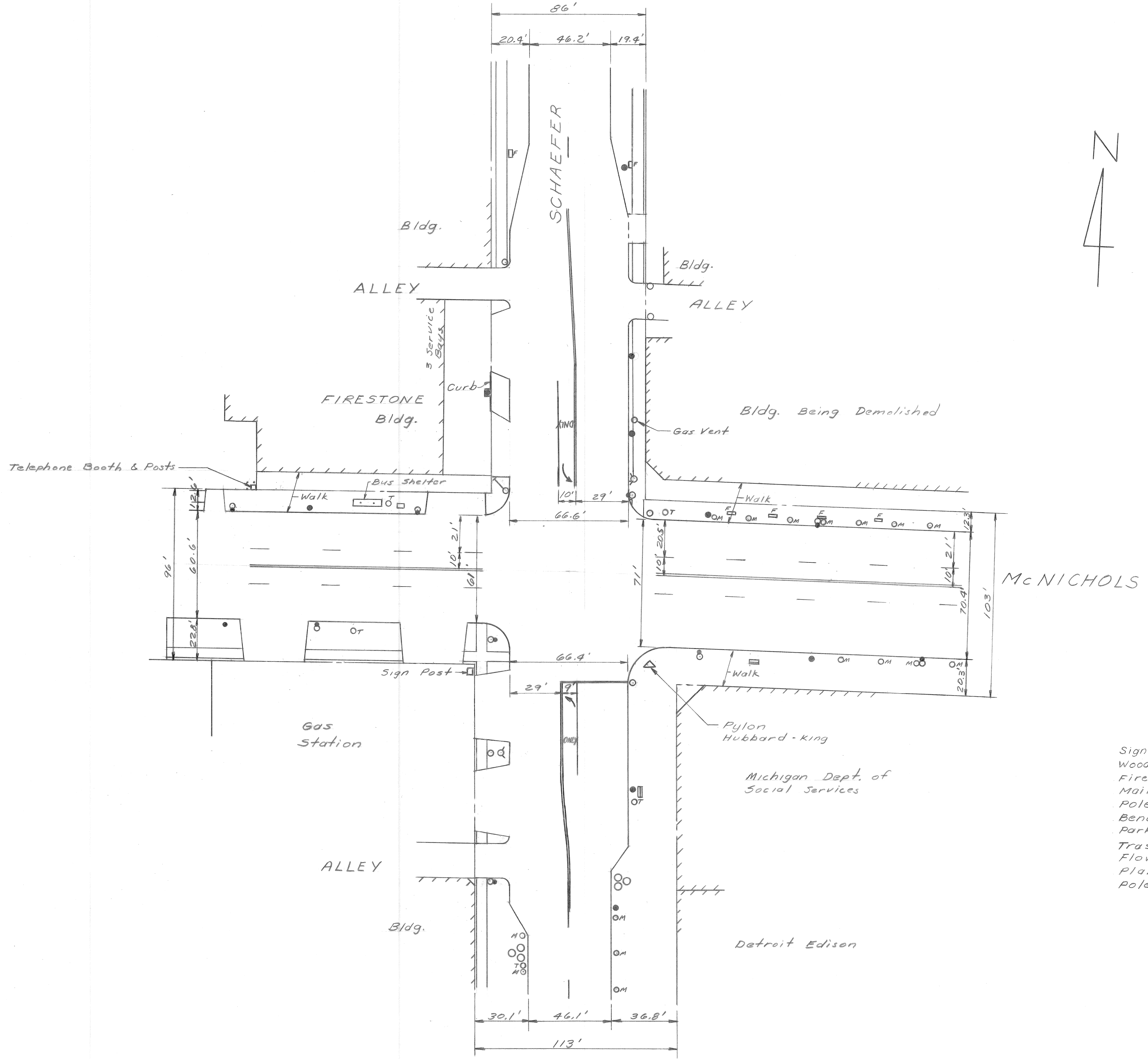
GREENFIELD ROAD - W. CHICAGO AVE. INTERSECTION

DETAIL STANDARD NO.	
DRAWING NO.	3/8
SCALE	1" = 30'
DATE	Sept. 12, 1984









**LEGEND**

- Sign Post
- Wood Pole
- ⊕ Fire Hydrant
- Mail Box
- ⊙ Pole with Light
- Bench
- ⊞ Parking Meter
- ⊠ Trash Container
- ⊡ Flower Box
- ⊞ Planter Boxes
- ⊙ Pole with Guy

1" = 30'

COORD	DESCRIPTION	DEV	CKD	APVD	DATE

REFERENCE DRAWINGS	DESIGNED BY	APPROVED:
	A. Proger	

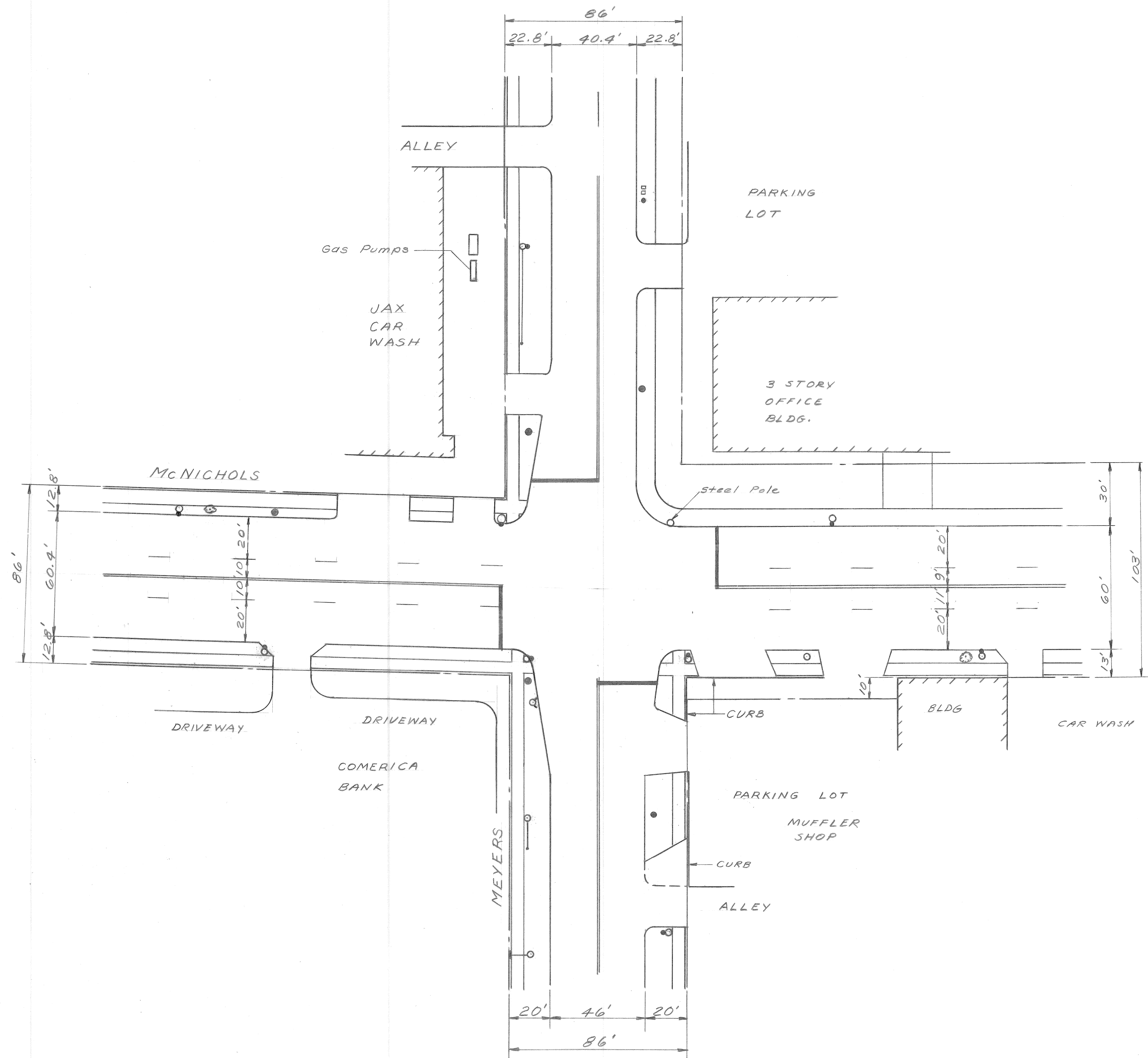
CHECKED BY	HIGHWAY & EXPRESSWAY ENGINEER

**CITY OF DETROIT**

SCHAEFER-McNICHOLS INTERSECTION

SHEET 6 OF 8 SHEETS
JOB No.
DRWG No.
DATE Sept. 10, 1984





**LEGEND**

- Sign Post
- Wood Pole
- Fire Hydrant
- Mail Box
- Pole with Guy
- Pole with Light

Scale : 1" = 30'

**CITY OF DETROIT**

*McNICHOLS-MEYERS INTERSECTION*

SHEET <u>7</u> OF <u>8</u> SHEETS
JOB No.
DRWG No.
DATE <i>Sept. 13, 1984</i>

NO.	DESCRIPTION	BY	DATE

DESIGNED BY	APPROVED:
DRAWN BY <i>A. Prager</i>	
TRACED BY	
CHECKED BY	HIGHWAY & EXPRESSWAY ENGINEER

REVISIONS LOCATED BY COORDINATES ON SHEET

