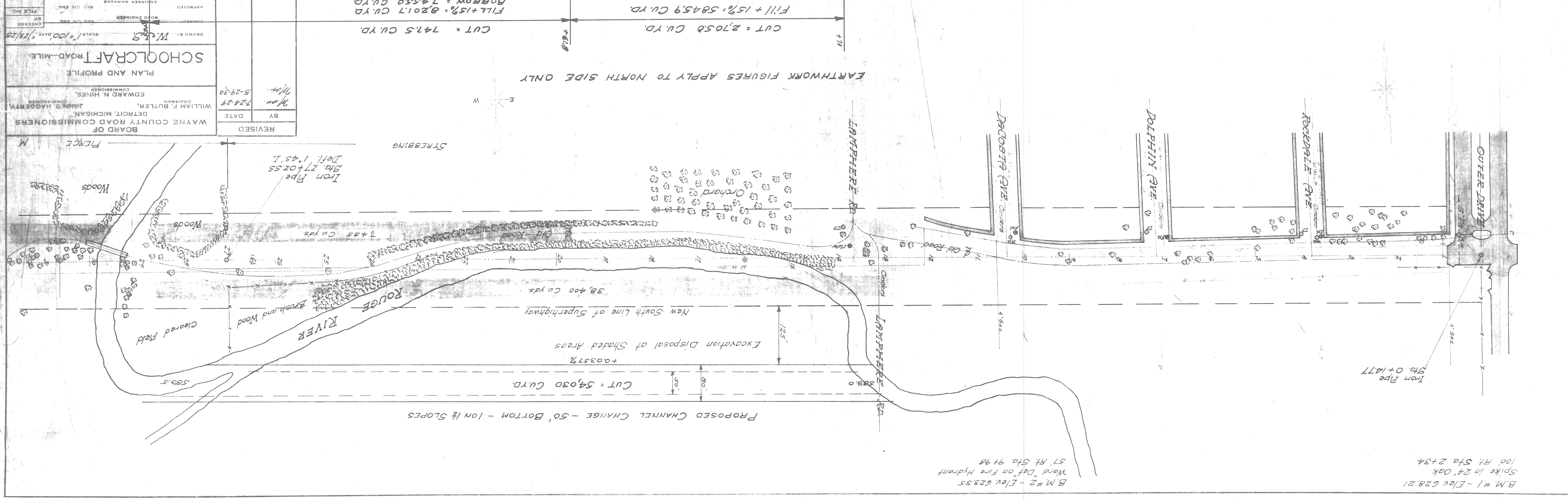
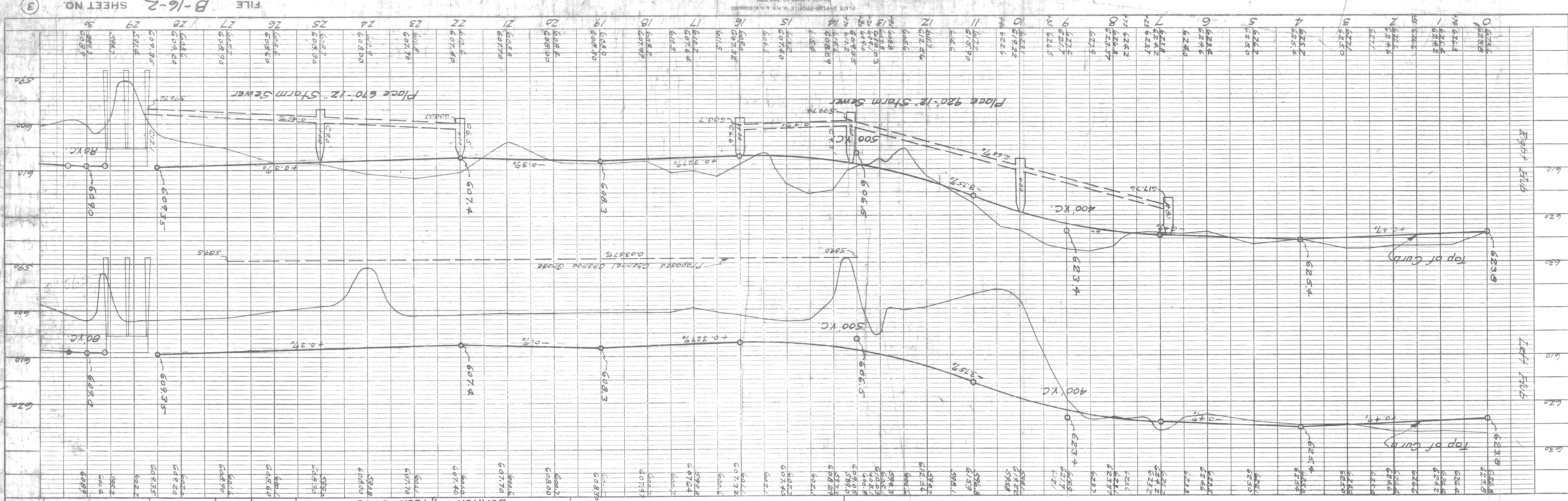


PROFILE  
 SURVEYED BY: J. J. Haggerty  
 NOTE BOOK GRADES CHECKED: J. J. Haggerty  
 IS M.S. NOTED: J. J. Haggerty  
 STRUCTURE NUMBER: 933

PLAN  
 SURVEYED BY: J. J. Haggerty  
 NOTE BOOK ALIGNMENT CHECKED: J. J. Haggerty  
 NO. 933 IS M.S. NOTED: J. J. Haggerty  
 R.T. OR VAN CHECKED: J. J. Haggerty



REVISIONS	BY	DATE
1	M.H.	7-24-29
2	M.H.	5-29-30

BOARD OF WAYNE COUNTY ROAD COMMISSIONERS  
 CHAIRMAN: WILLIAM F. BUTLER  
 COMMISSIONERS: JAMES S. HAGGERTY, EDWARD N. HINES  
 ENGINEER: W. J. Haggerty  
 DRAWN BY: W. J. Haggerty  
 SCALE: 1" = 100' DATE: 7/24/29  
 CHECKED BY: W. J. Haggerty  
 FILE NO.:

SCHOOLCRAFT

FILE B-16-2 SHEET NO. 3

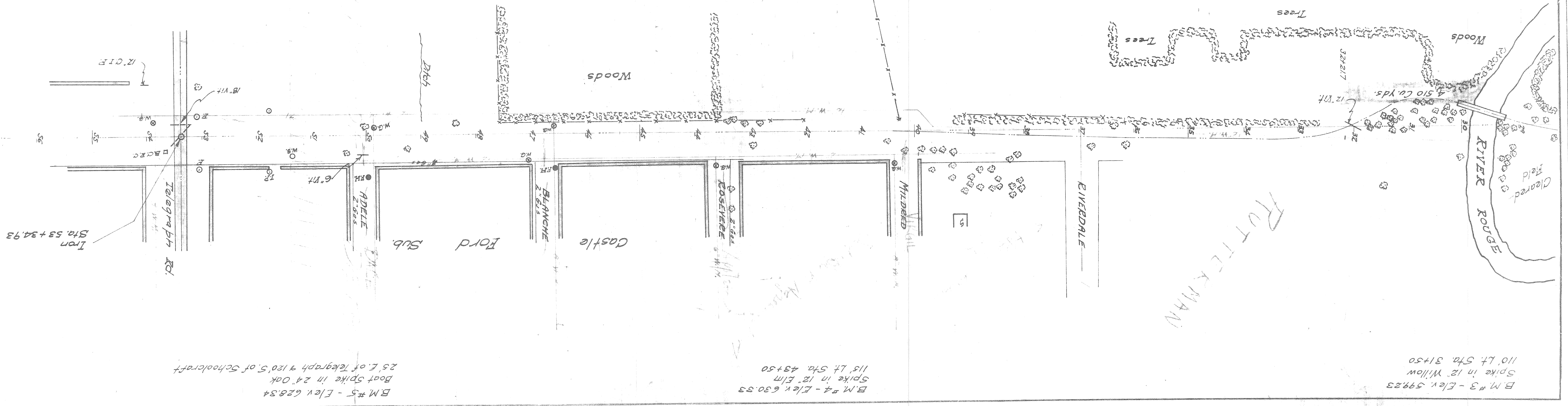
PLATE 2 - PLAN - PROFILE BY M. R. & P. S. STANDERD  
 HOFFER & BERN CO., NEW YORK

B.M. #1 - Elev 628.21  
 Spike in 24" Oak  
 100' Rt. Sta. 2+34

B.M. #2 - Elev 628.85  
 Ward Det on Fire Hydrant  
 57' Rt. Sta. 9+98

DATE	7/27/28
BY	W. J. B.
PLAN	ALIGNMENT CHECKED
NO. 933	RT. OF WAY CHECKED
NOTE BOOK	
SURVEYED	

DATE	7/27/28
BY	W. J. B.
PROFILE	GRADES CHECKED
NO. 933	STRUCTURE NOTING CHECKED
NOTE BOOK	
SURVEYED	



REVISIONS	BY	DATE
1	W.J.B.	7-24-28
BOARD OF WAYNE COUNTY ROAD COMMISSIONERS		
CHAIRMAN: WILLIAM F. BUTLER		
COMMISSIONERS: EDWARD N. MINES, JOHN S. HAGGERTY		
PLAN AND PROFILE		
SCHOOLCRAFT ROAD—MILES		
DRAWN BY: W.J.B.		
SCALE: 1" = 100' HORIZ. 1/8" = 20' VERT.		
CHECKED BY: [Signature]		
CORRECTED BY: [Signature]		
APPROVED BY: [Signature]		
FILE NO. [Blank]		

