

P.B.M. # 95-250 Elev. 126.733
N.E. Corner Hayes & Seven Mi.

C.B.M. Elev. 130.61 Arrow on Hydrant
N.W. Corner of Hayes & Seven Mi.

C.B.M. Elev. 129.95 Arrow on Hydrant
N.W. Corner of Hayes & Maddelein

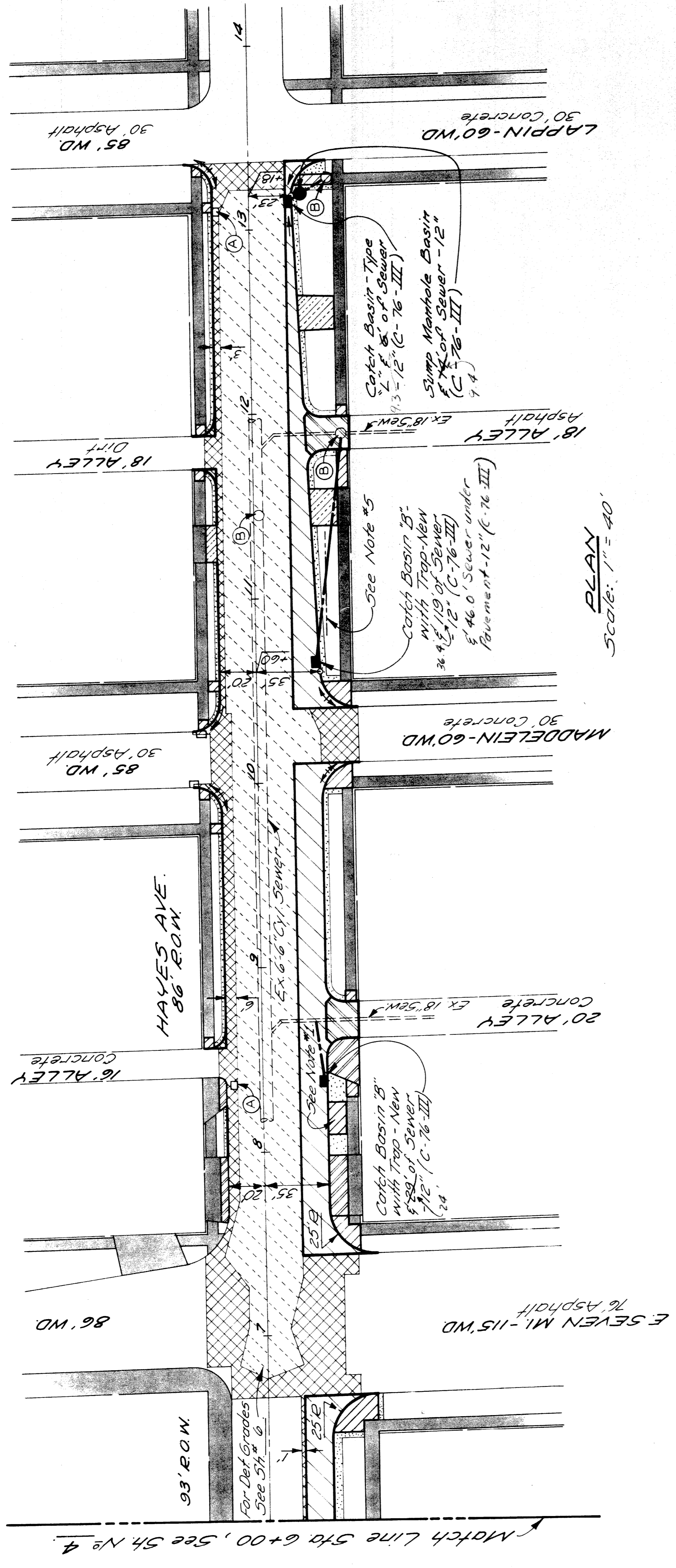
LEGEND

- 9" Conc. Base Pavt. with Bituminous Surface
- 9" Pavement - Non-Reinforced
- Stripping and Bituminous Surface *
- Bituminous Surface
- 4" or 6" Sidewalk, See Note #4
- Existing Sidewalk to Remain
- 6" Driveway
- 8" Driveway
- Sodding
- Manhole - Adjustment
- Catch Basin - Adjustment

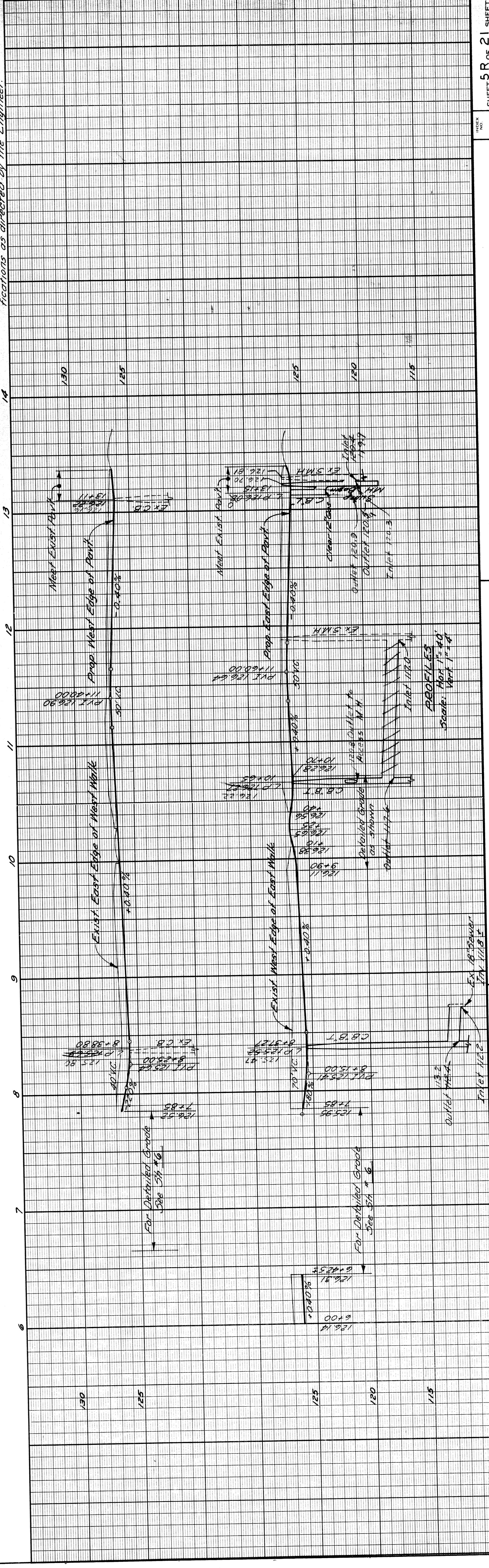
* See Note 'D' 5th No. 2

NOTES:

1. Relocated Bus Shelter and Walk. See Relocating Bus Shelter in the Proposal.
2. All prop. street return radii shall be 20' on East side of Hayes, 15' on West side except as noted.
3. All prop. alley return radii shall be 10'.
4. The class of sewer pipe indicated on the drawings shall be incidental to the pay items sewer and sewer under pavement.
5. For areas where 6" sidewalk is required, see the supplementary specifications in the proposal.
6. Drain existing 4" D.E. about drain into prop. C.B. or sewer run. (By others)
7. Construct 6" driveways in accordance with the Detail of Side Drive Curb Opening, 8" driveways in accordance with Detail of Alley Return Casing & pavement, as shown on Standard Drawing C-4384, with modifications as directed by the Engineer.



PLAN
Scale: 1" = 40'



<p>REVISIONS</p> <p>NO. DESCRIPTION</p>	<p>DATE</p> <p>2 - 9 - 73</p>	<p>CONTRACT NO.</p> <p>P.W. 6538</p>	<p>SHEET 5R OF 21 SHEETS</p>
<p>CITY OF DETROIT DEPARTMENT OF PUBLIC WORKS CITY ENGINEERS OFFICE</p>			
<p>FOR</p>			
<p>HAYES WIDENING AT SEVEN MILE</p>			
<p>PLAN AND PROFILE</p>			
<p>APPROVED</p>			
<p>CHECKED BY: RBP/DJG</p>			
<p>BY: MAP</p>			
<p>ESTIMATE: V.D.B.C.P.P. # 13</p>			
<p>FINAL</p>			

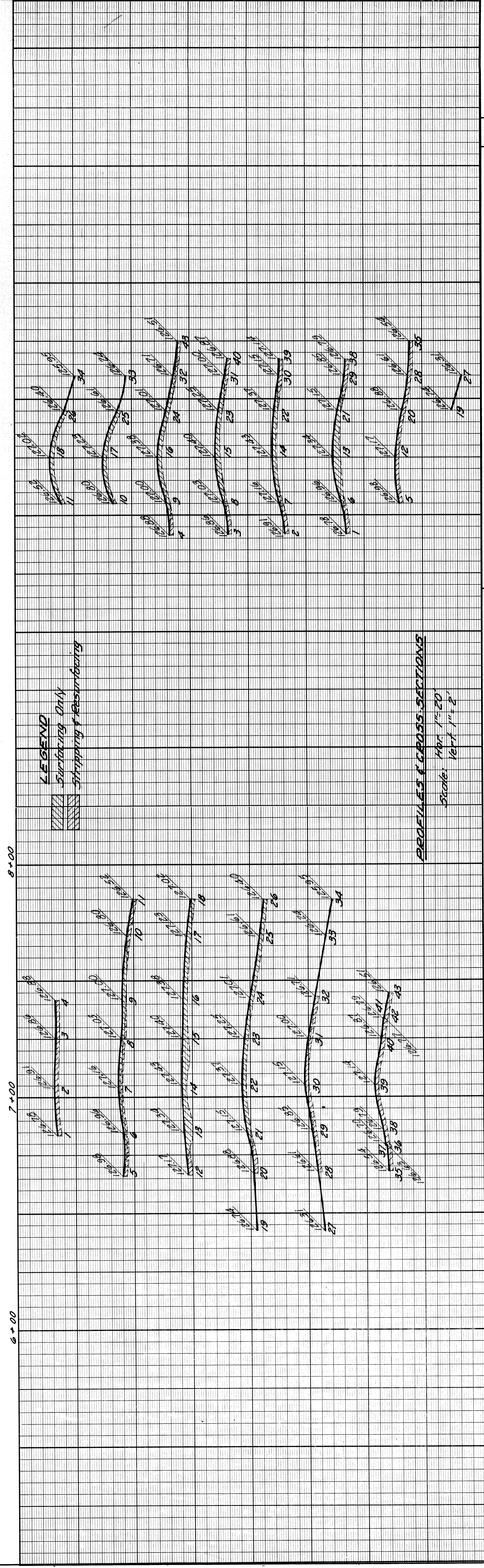
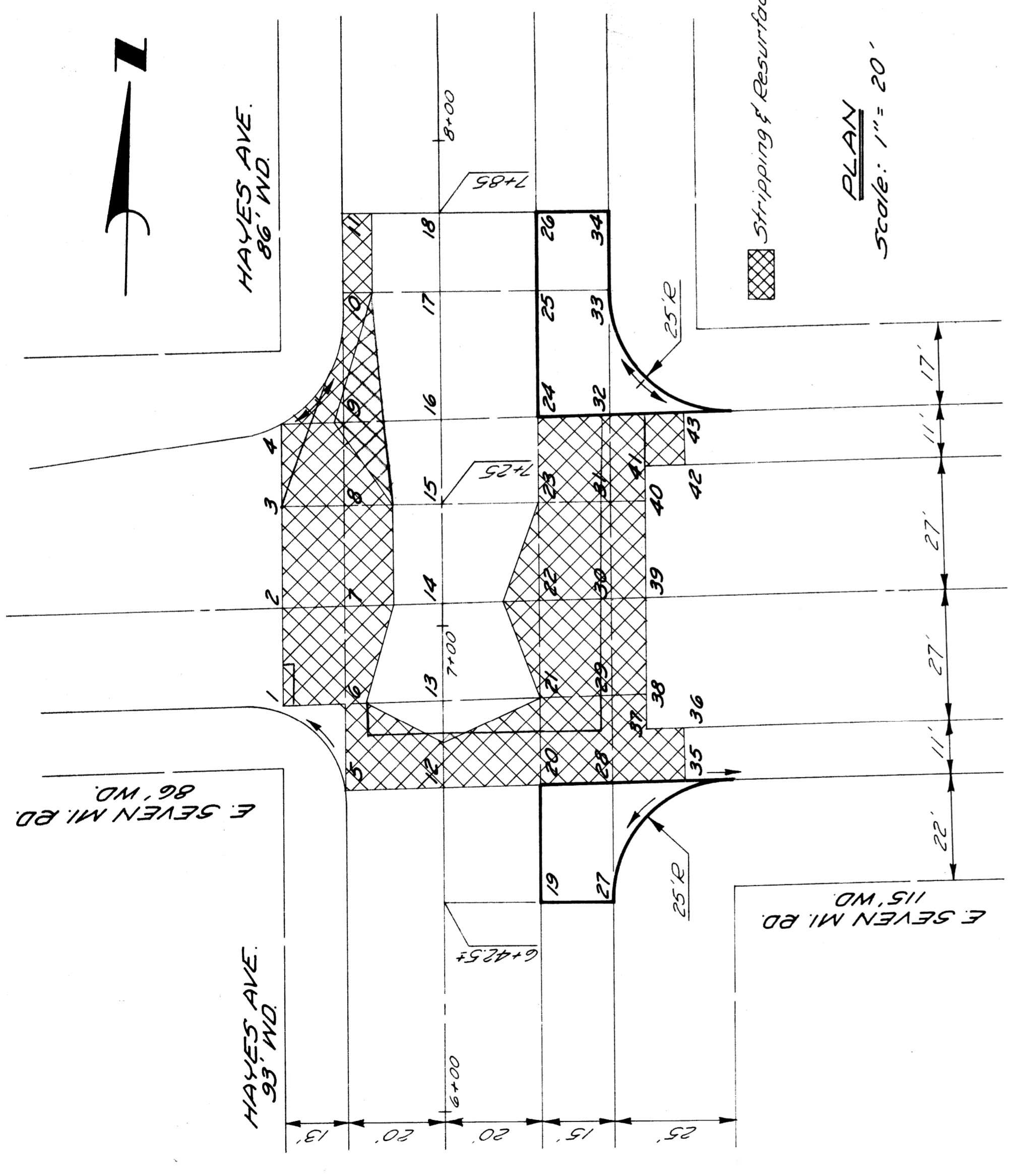
NOTE - FOR SYMBOLS (C) ETC. SEE STANDARD DETAIL DRAWING NO. C-1779

CONTRACTOR MUST CHECK WITH UTILITIES FOR LOCATIONS OF EXISTING STRUCTURES WHETHER OR NOT INDICATED ON PLANS.

SCALE	HORIZONTAL	VERTICAL
BOOK NO.	NO.	NO.
DATE	DATE	DATE

BENCH MARKS

ELEV.



INDEX NO.	SHEET 6 OF 21 SHEETS
CONTRACT NO.	P.W. 6538
DATE	2-9-73
CITY OF DETROIT DEPARTMENT OF PUBLIC WORKS CITY ENGINEERS OFFICE FOR DETAILED GRADES HAYES WIDENING AT SEVEN MILE	
APPROVED	CHECKED BY
ENGINEER OF STREETS	RBP/DJG
ADMINISTRATIVE ENGINEER	RBP/DJG
HEAD CIVIL ENGINEER	REVIEW
BY	PLAN
M.A.P.	GRADE
M.A.P.	ESTIMATE
CHECK	FINAL
DESCRIPTION	REVISIONS