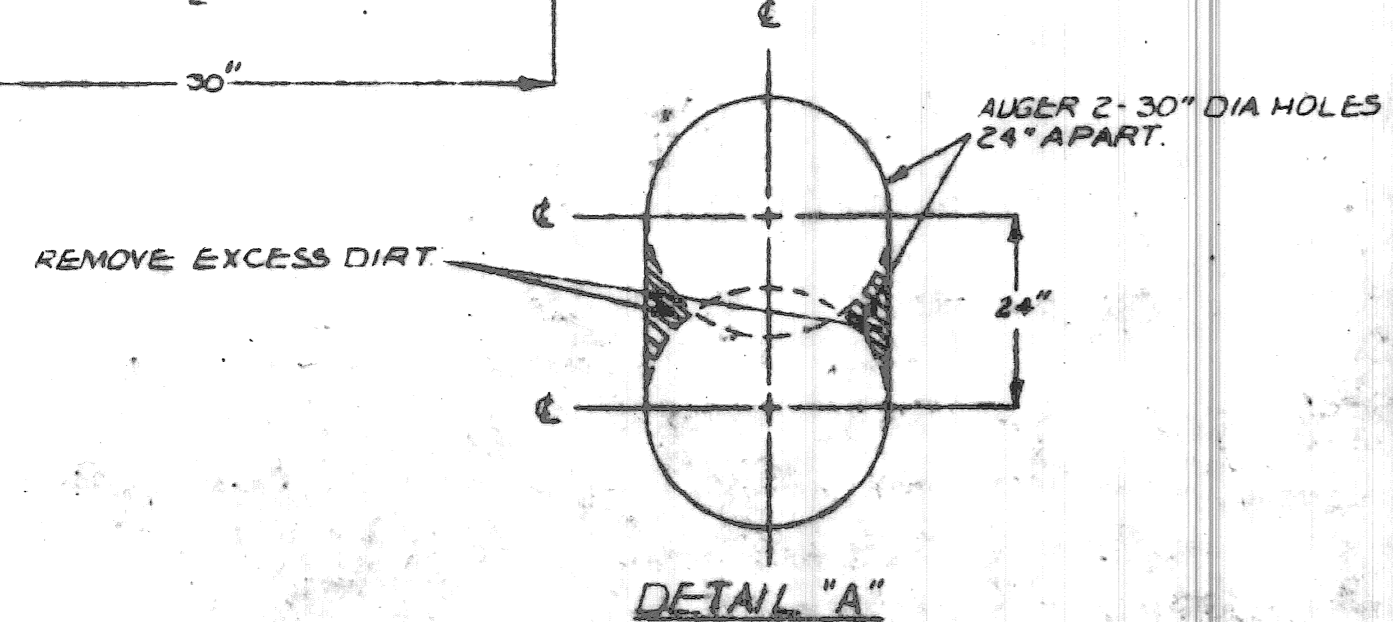
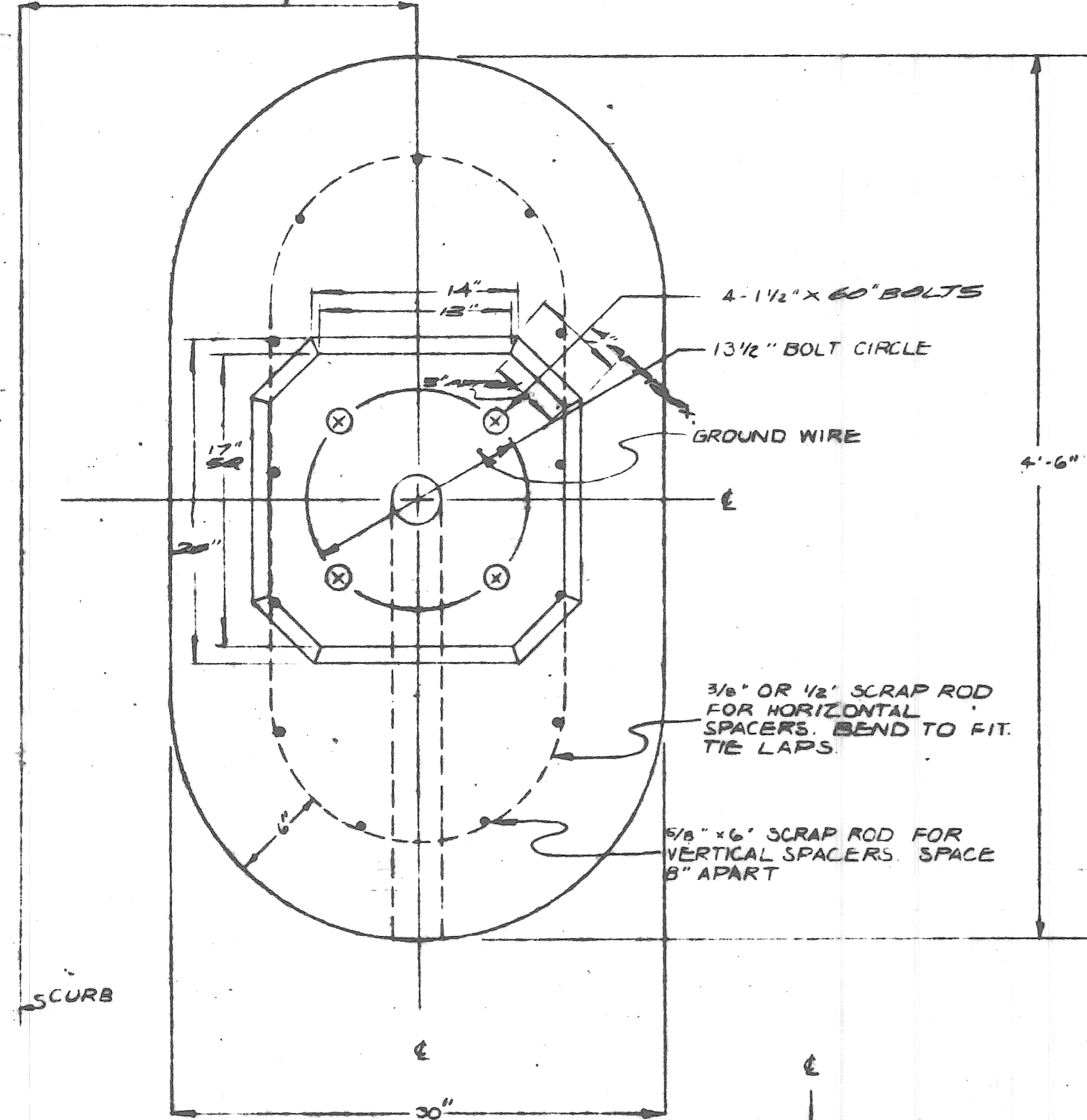
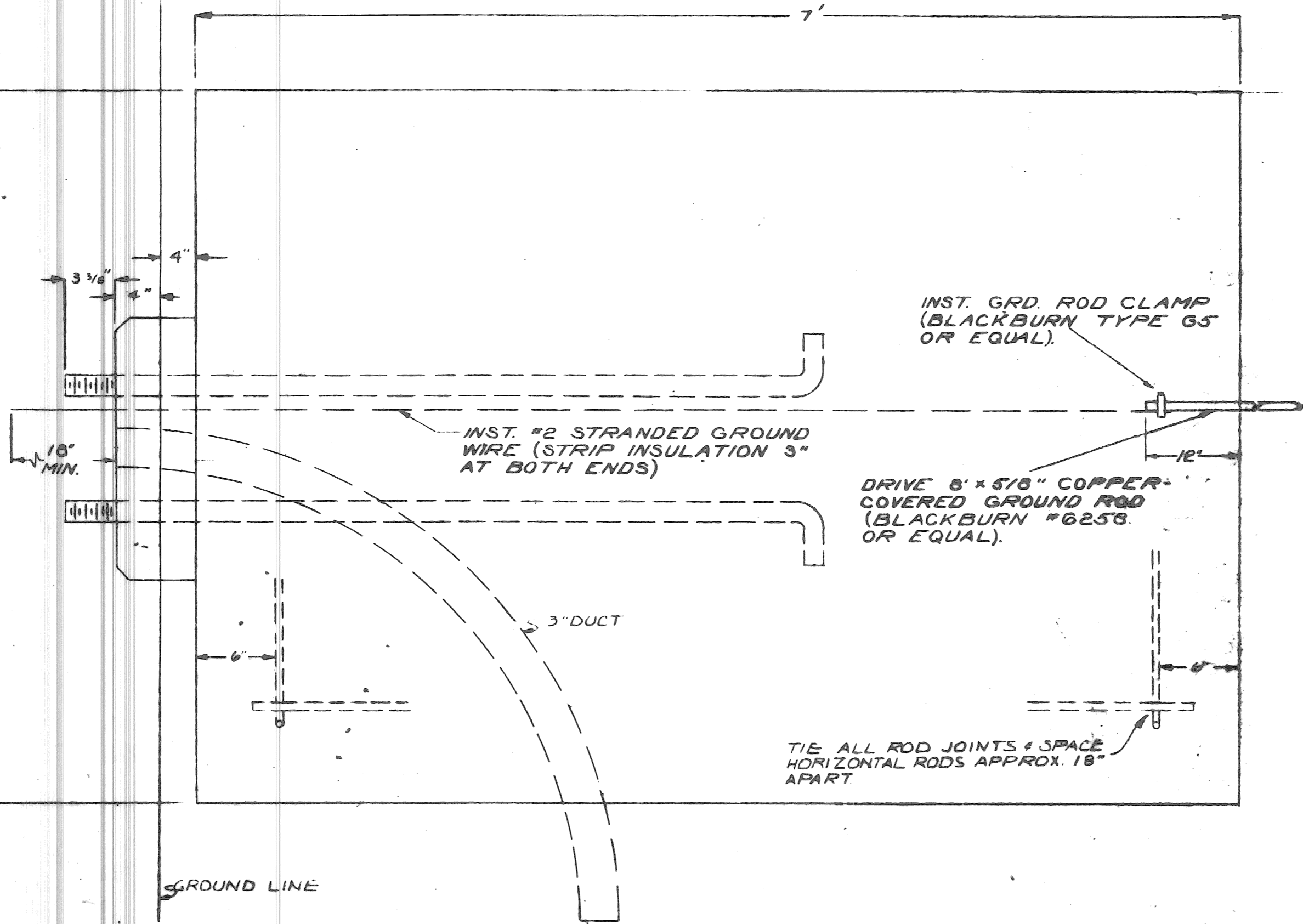


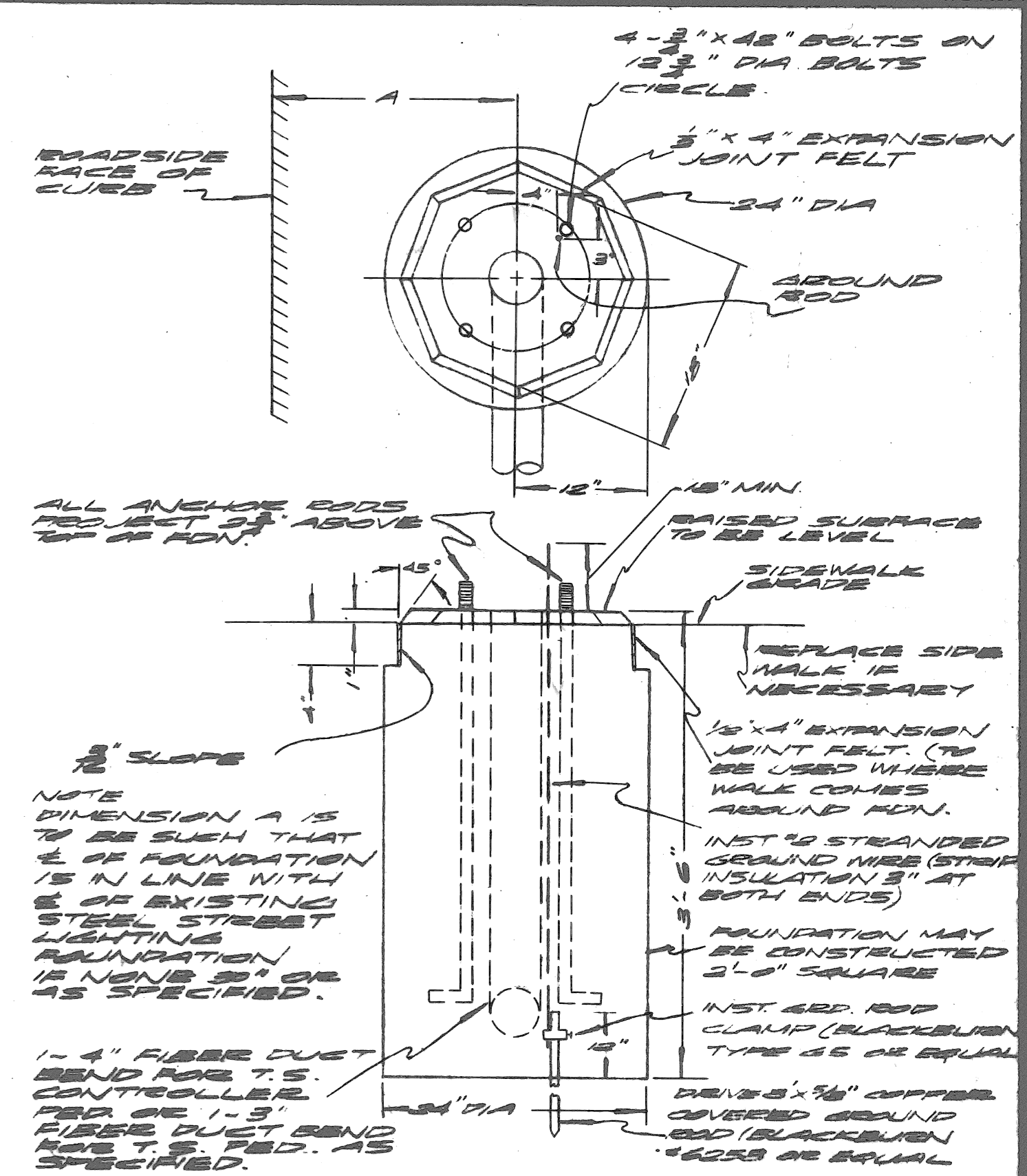
SEE CONSTRUCTION DWG. FOR THIS DIMENSION



FOUNDATION FOR MA. STD. / COMBINATION STD FOR TRUSS TYPE T.S. MAST ARM. SCALE: 1 1/2" = 1'



NOTES:  
1 USE TEMPLATE FOR FDN. DWG. #43-0353.  
2 USE SLIGHTLY RUSTED SCRAP ROD. DO NOT USE SCRAP ROD WITH PAINT ON IT.



FOUNDATION FOR OCTAGON BASE PEDestal FOR CONTROLLER OF TRAFFIC SIGNALS  
DRAWN BY: E.M.H. FILE NO. 52-1890  
APPROVED BY: [Signature] DATE: 4-2-68

PROJECT NO. T 4000(4) JOB NO. 03185  
MICHIGAN STATE HIGHWAY DEPARTMENT

DATE	DESCRIPTION	CHKD. BY
2-22-68	CHK. ALL DIM. Length & Diameter. of Top	[Signature]

DRAWN BY [Signature]	PUBLIC LIGHTING COMMISSION CITY OF DETROIT	FILE NO. 52-1890
APPROVED BY [Signature]		SHEET NO. 1 OF 1
		DATE 4-2-68

REVISIONS			
NO.	DESCRIPTION	DATE	BY

NOTES

1. CONTRACTOR TO PROVIDE ALL FORMS AND TEMPLATES NECESSARY FOR BUILDING FOUNDATIONS USE TOP FORM NO. DWG. NO. 50-3-4

TOP 6" OF FOUNDATION BOLTS TO BE GALVANNEUM PLATED OR ELECTRO-ENAMILED AFTER THREADING NUTS TO BE SIMILARLY PLATED & MUST TURN FREELY

1-1/2" BOLTS ON 15" BOLT CIRCLE USE TEMPLATE NO. 5071



INSTALL #2 STRANDED GROUND WIRE WITH INSULATION 5' AT BOTH ENDS  
 INSTALL GROUND ROD (1/2" DIA. GALV. STEEL TYPE 65 OR EQUAL)  
 DRIVE 2" X 36" COPPER COVERED SHANK ROD (BLACKBURN # 6259 OR EQUAL)

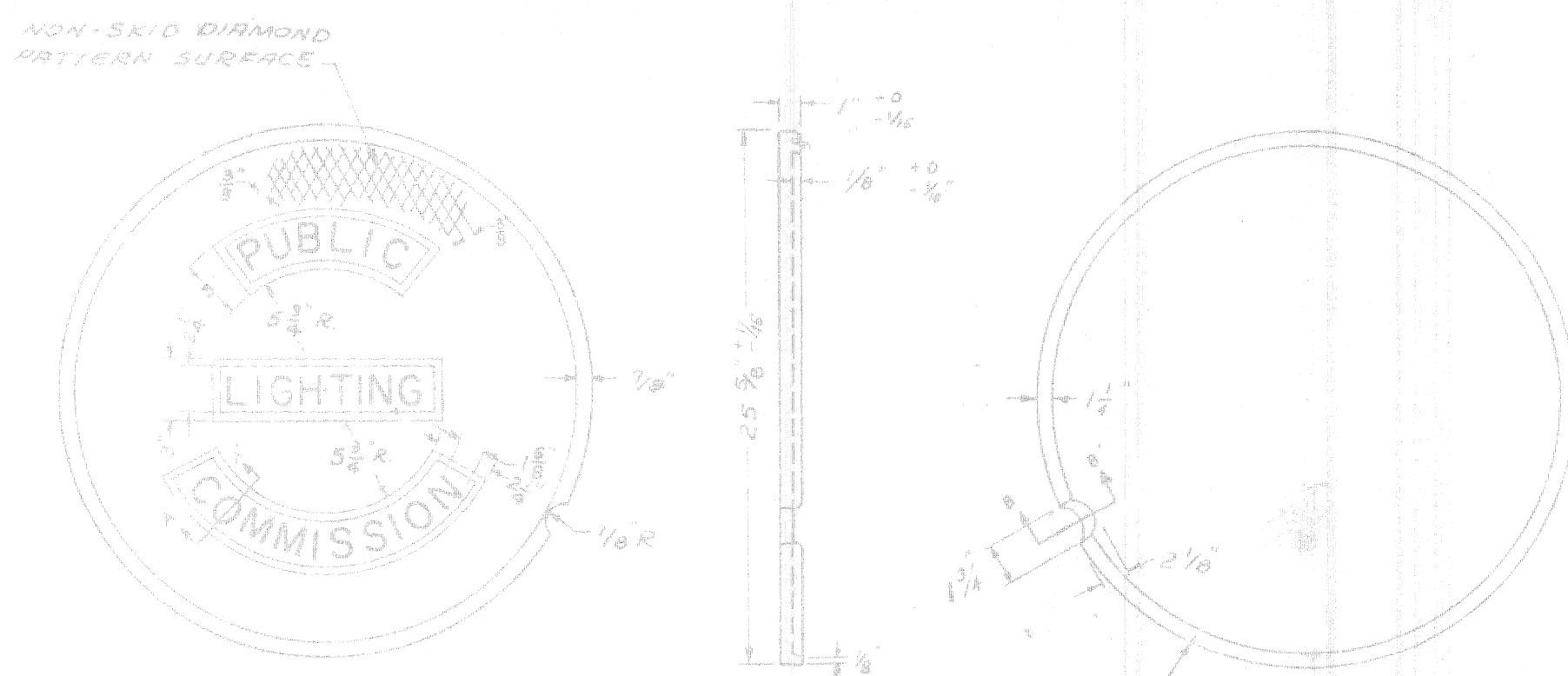
SCALE: 1 1/2" = 1'

COMBINATION 1 AMP POST  
 24" FOUNDATION  
 DWG. NO. 43-0360

DATE	DESCRIPTION	CHKD. BY

# PLC DETAILS FOUNDATIONS

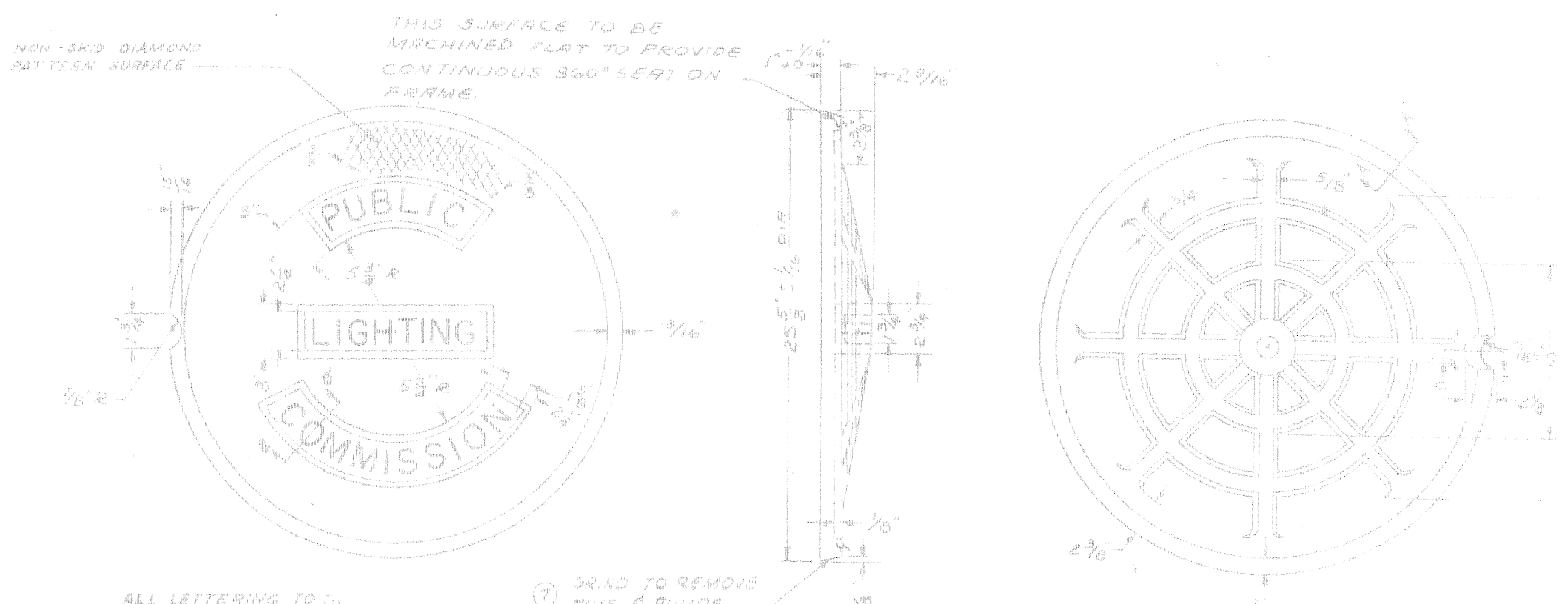
PROJECT NO. T 4000(4)		JOB NO. 03185	
DESIGNED BY <b>ENRAPS</b>	PUBLIC LIGHTING COMMISSION CITY OF DETROIT	FILE NO. 43-0360	SHEET NO. 8 of 11 DATE 1-25-71
CHECKED BY <b>ENRAPS</b>		APPROVED BY <b>ENRAPS</b>	



PL.C. PATTERN NO. 419  
A.S.T.M. CLASS 30 GRAY IRON  
SIDEWALK TYPE  
COVER

ALL LETTERING TO BE 1/4" HIGH, AND FLUSH WITH SURFACE OF COVER.  
SECTION A-A

THIS SURFACE TO BE MACHINED FLAT TO PROVIDE CONTINUOUS 360° SEAT ON FRAME.  
SECTION B-B

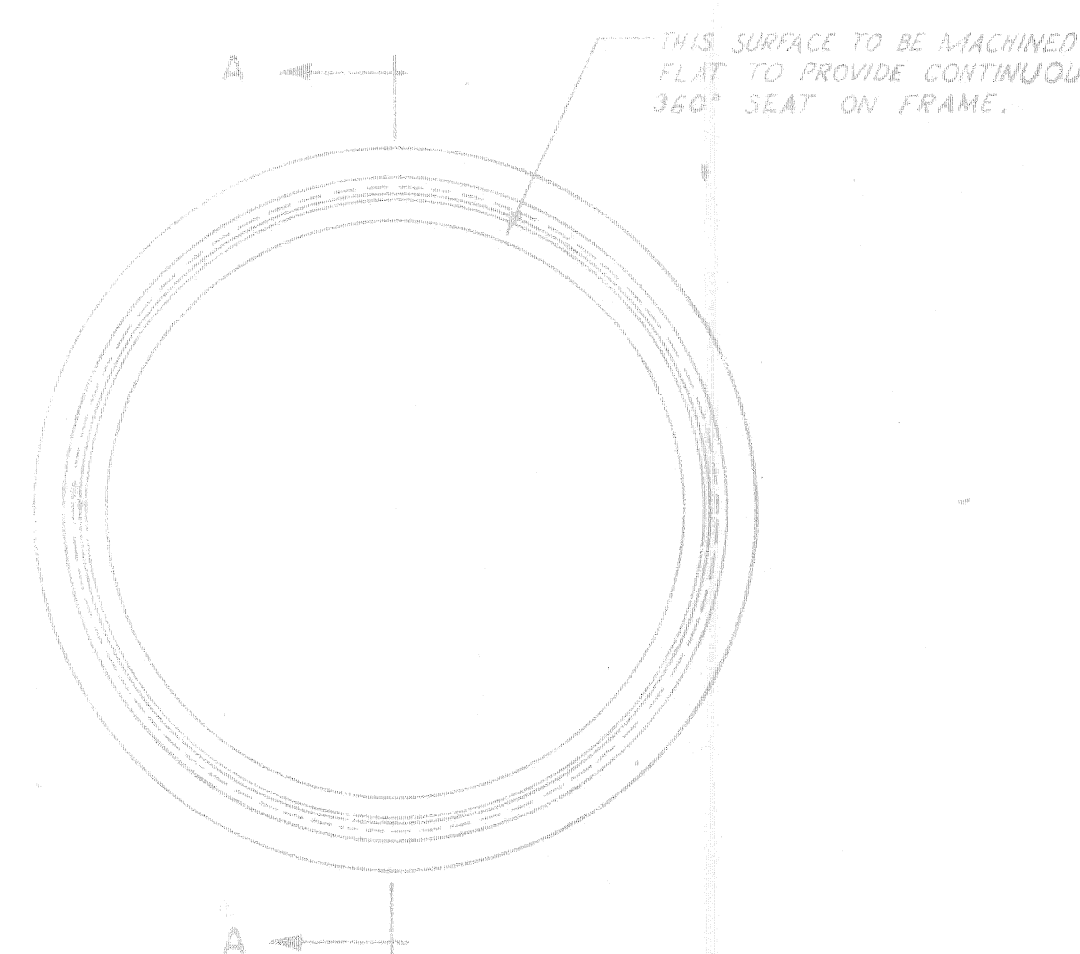


PL.C. PATTERN NO. 2A  
A.S.T.M. CLASS 30 GRAY IRON  
APPROX. WT. 145 LBS.  
STREET COVER  
P.L.C. PATTERN NO. 2A

ALL LETTERING TO BE 1/4" HIGH, AND FLUSH WITH SURFACE OF COVER.  
SECTION B-B

GRIND TO REMOVE FILLS & BUMPS

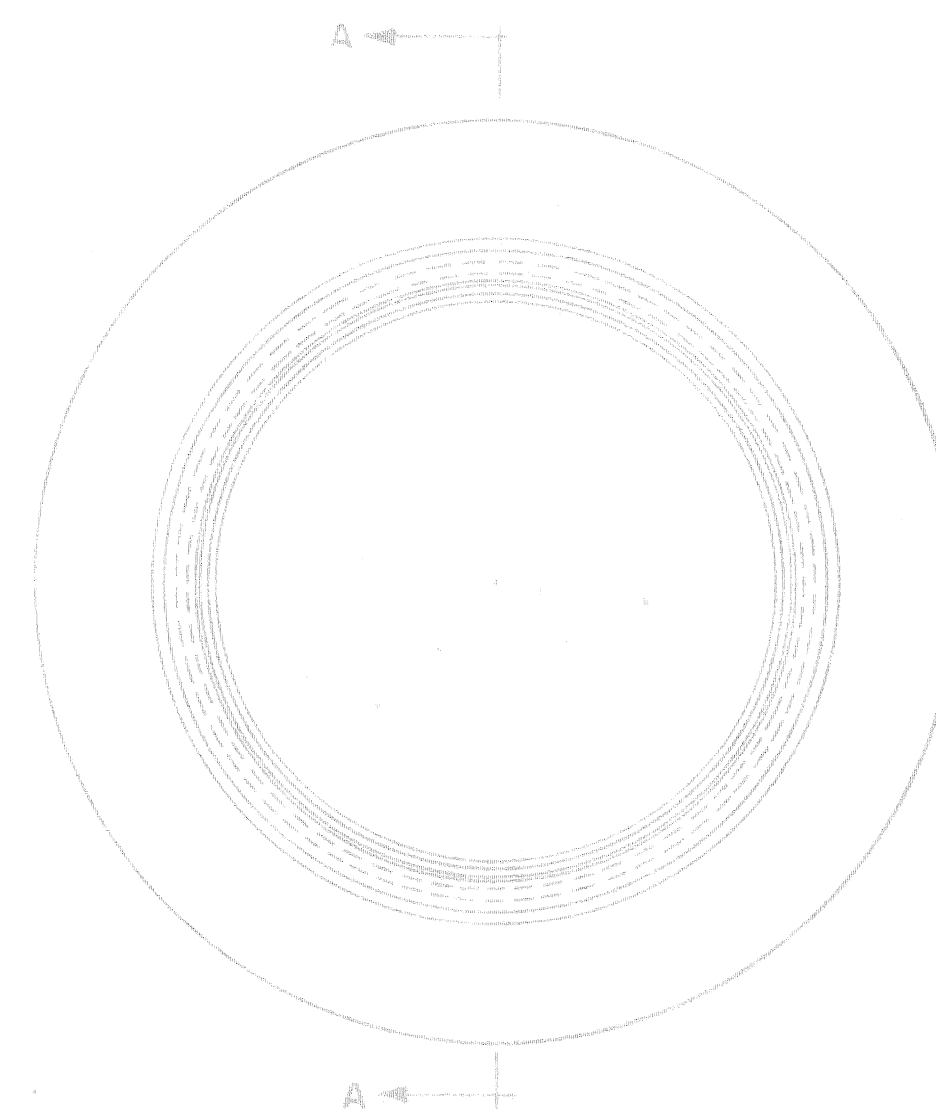
SECTION C-C



PL.C. PATTERN NO. 420  
A.S.T.M. CLASS 20 OR 30 GRAY IRON  
APPROX. WT. 122 LBS.  
SIDEWALK TYPE  
FRAME

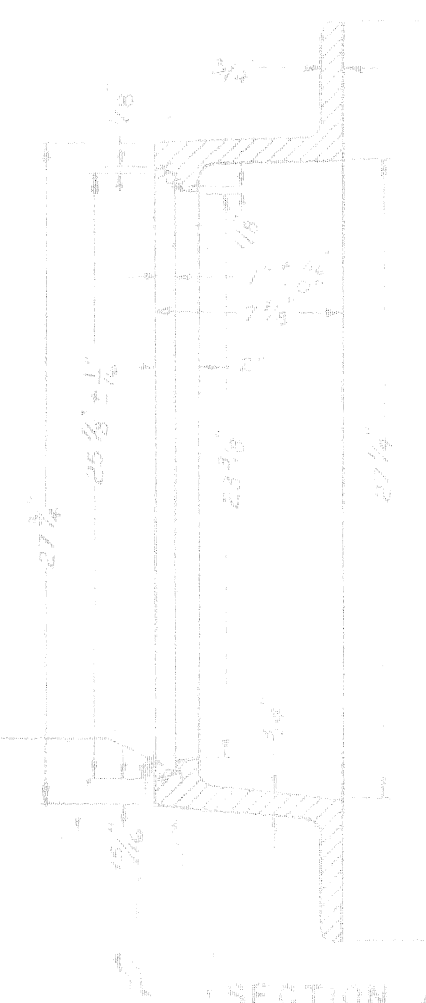
THIS SURFACE TO BE MACHINED FLAT TO PROVIDE CONTINUOUS 360° SEAT ON FRAME.

SECTION A-A



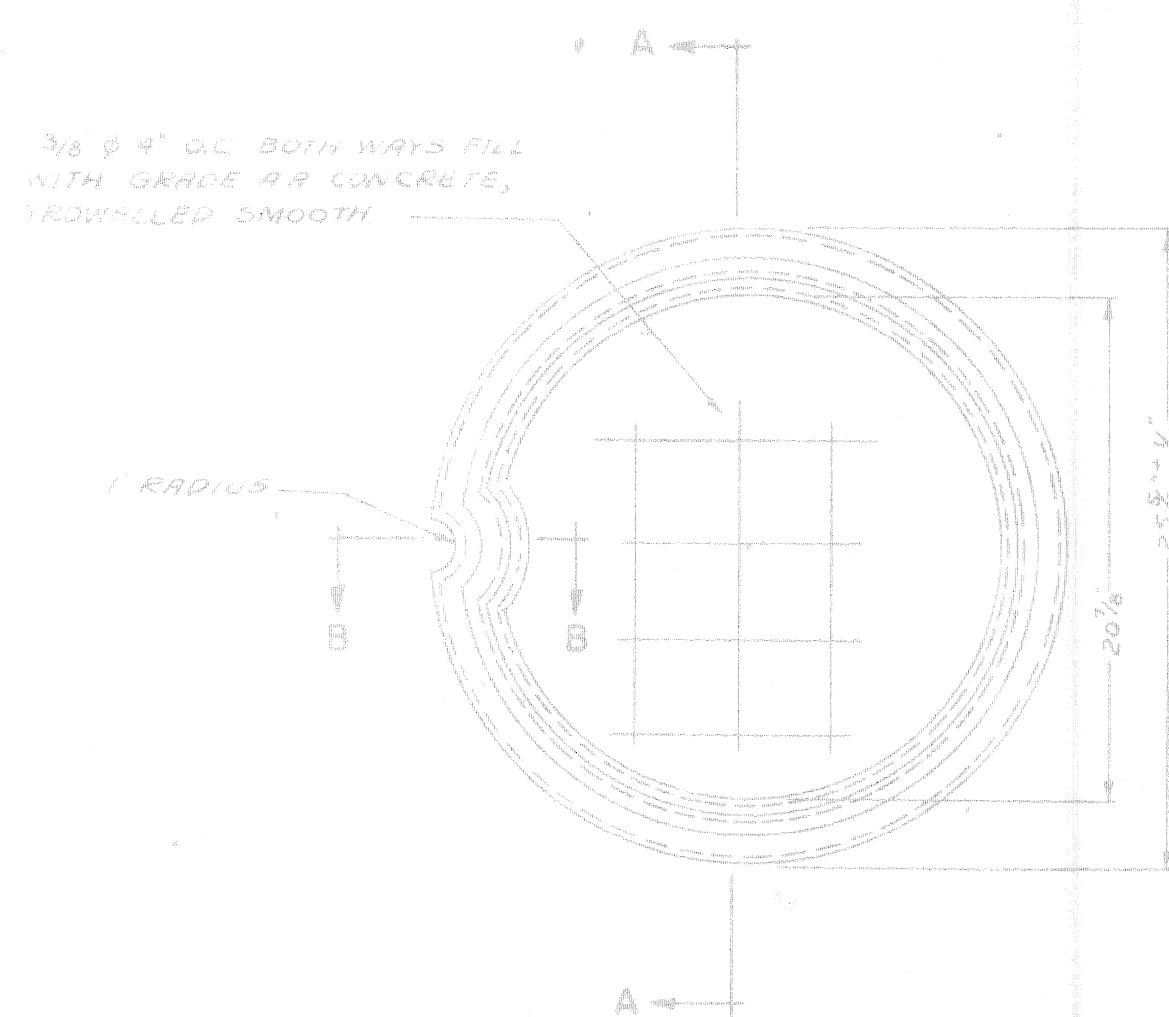
PL.C. PATTERN NO. 1A  
A.S.T.M. CLASS 20 OR 30 GRAY IRON  
APPROX. WT. 231 LBS.  
STREET TYPE  
FRAME

THIS SURFACE TO BE MACHINED FLAT TO PROVIDE CONTINUOUS 360° SEAT FOR COVER



SECTION A-A

ALL FILLETS ARE 1/2" RADIUS & ALL ROUNDS ARE 1/4" RADIUS

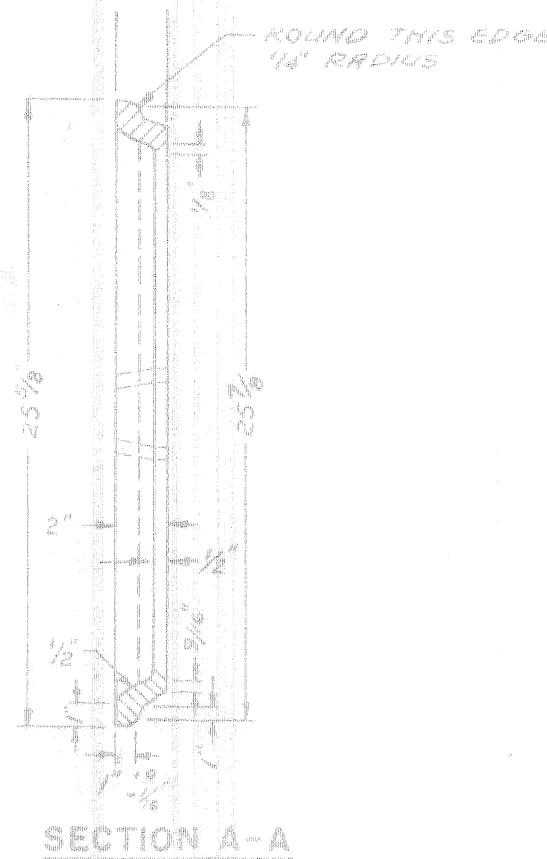


PL.C. PATTERN NO. 421  
A.S.T.M. CLASS 30 GRAY IRON  
APPROX. WT. 44 LBS.  
SIDEWALK TYPE  
CONCRETE FILLED COVER

3/8" @ 4" O.C. BOTH WAYS FILL WITH GRADE R.R. CONCRETE, FINISHED SMOOTH.

SECTION B-B

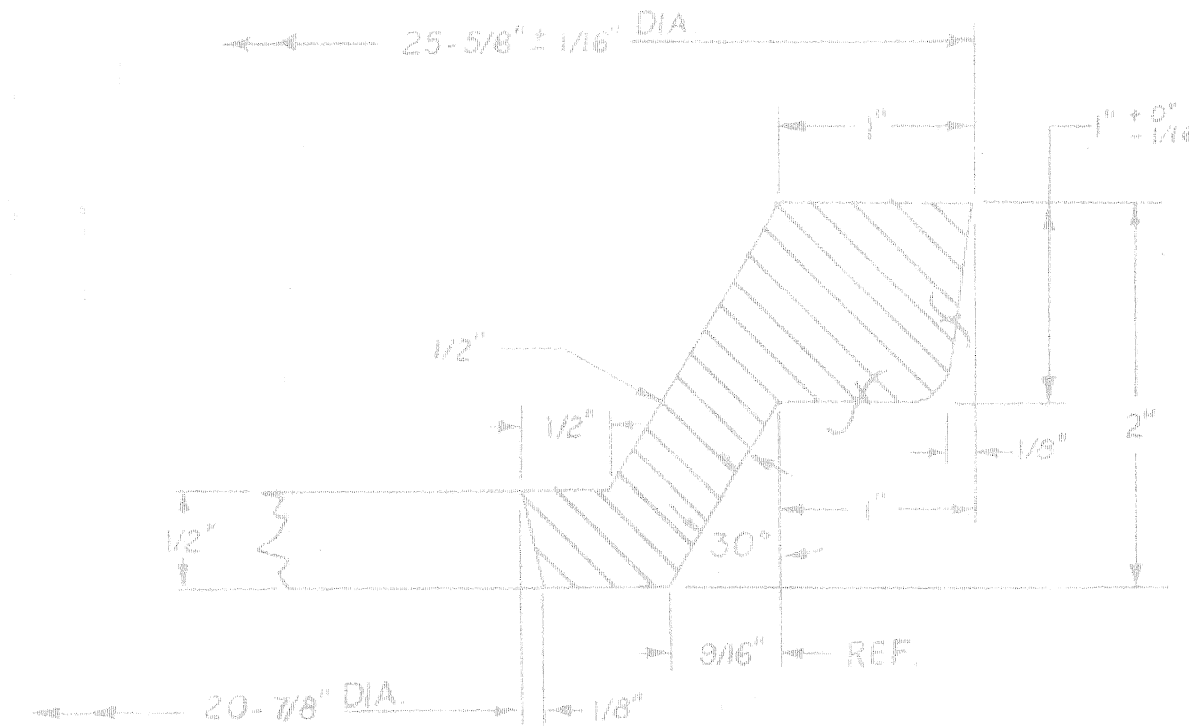
THIS SURFACE TO BE MACHINED FLAT TO PROVIDE CONTINUOUS 360° SEAT ON FRAME. SEE DETAIL 'A'



SECTION A-A

NOTE:

FRAMES MAY BE A.S.T.M. CLASS 30 GRAY IRON IF THE CONTRACTOR SO ELECTS.



DETAIL 'A'  
(FULL SCALE)

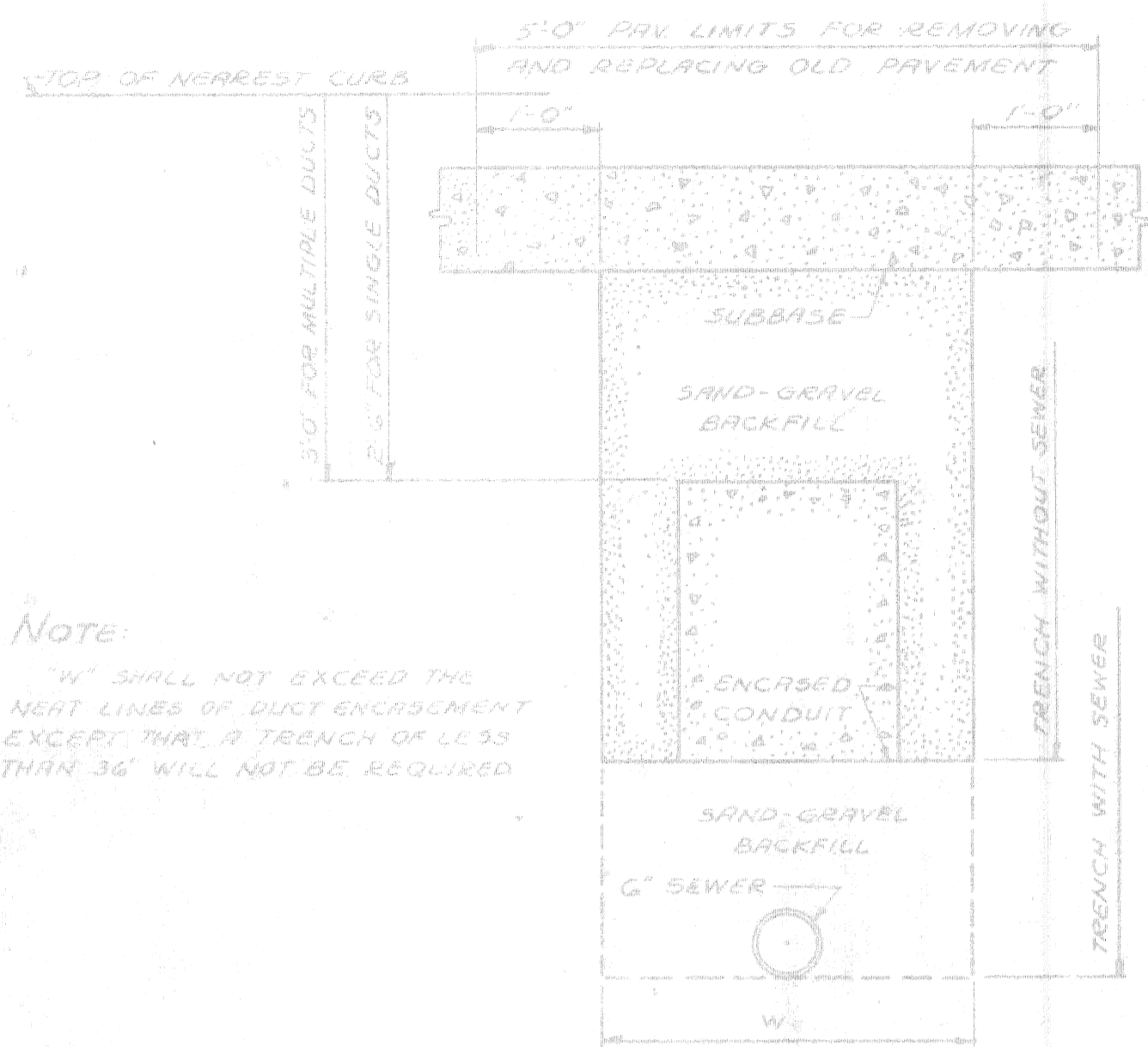
PROJECT NO. T 4000(4) JOB NO. 03185

CITY OF DETROIT		DRAWN BY	FILE NO.
PUBLIC LIGHTING COMMISSION		R.G.P.	55-36
P.L.C. DETAILS - HANDHOLE FRAMES & COVERS		CHECKED BY	SHEET NO.
			9
		APPROVED BY	DATE
			2-5-52

MICHIGAN STATE HIGHWAY DEPARTMENT

1	REVISIONS	DATE	BY
2	REVISIONS	DATE	BY
3	REVISIONS	DATE	BY
4	REVISIONS	DATE	BY
5	REVISIONS	DATE	BY
6	REVISIONS	DATE	BY
7	REVISIONS	DATE	BY
8	REVISIONS	DATE	BY
9	REVISIONS	DATE	BY

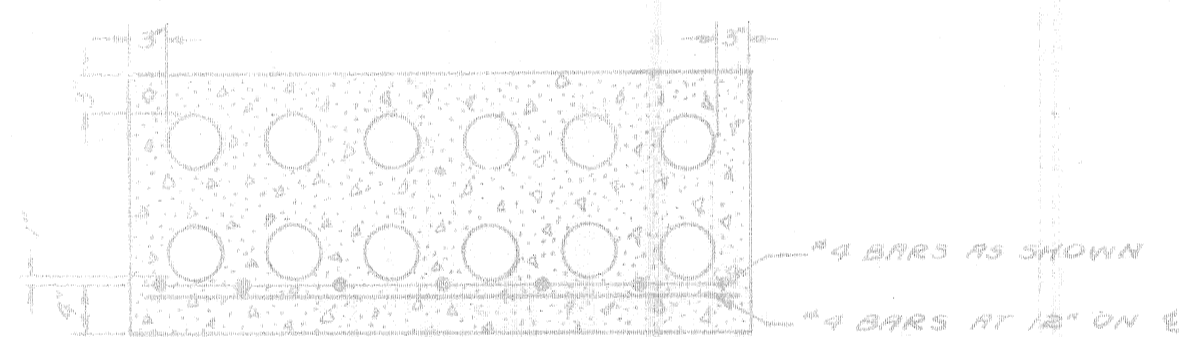
APPROVED BY



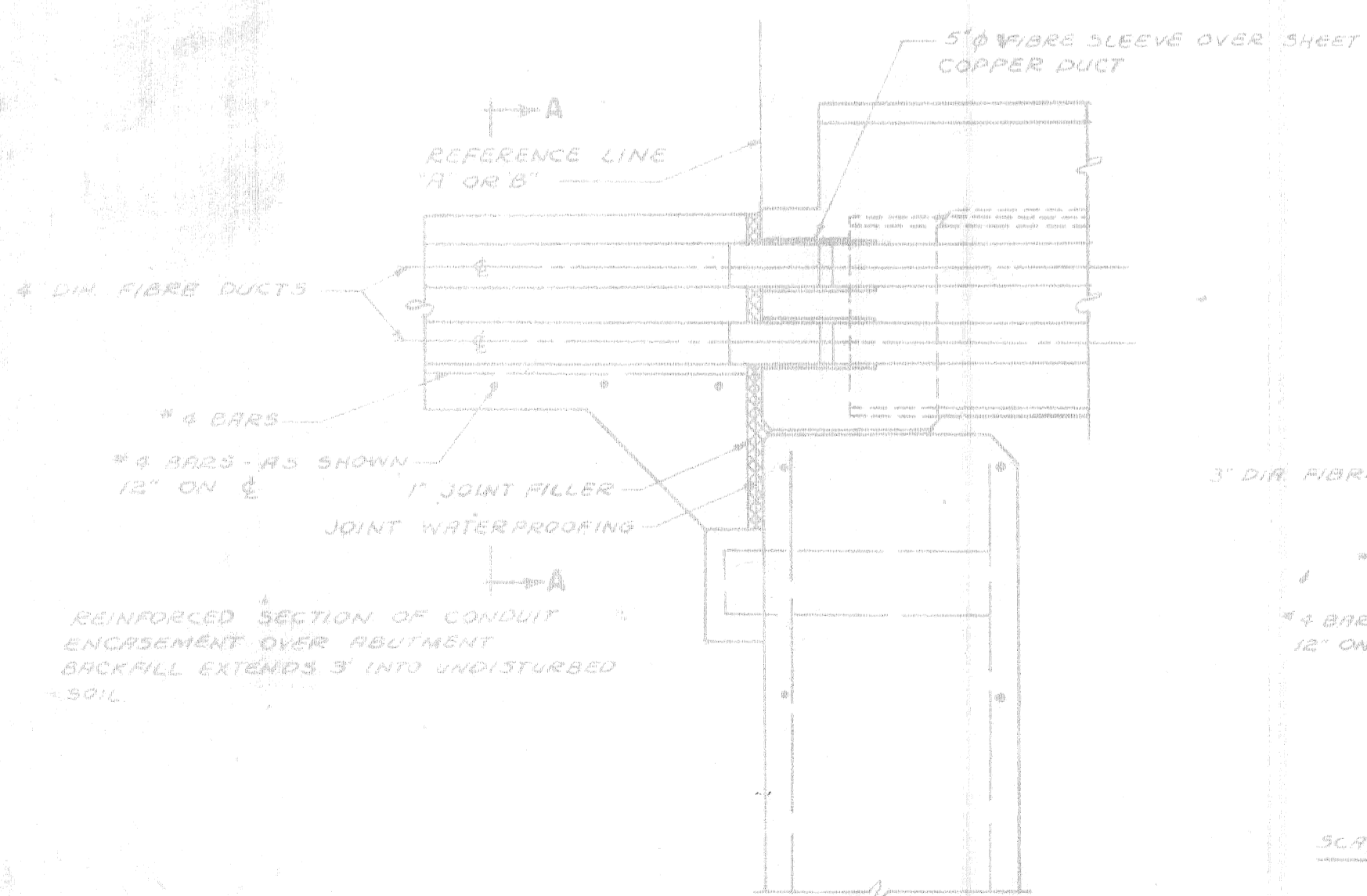
Note:  
W SHALL NOT EXCEED THE NEAREST LINES OF DUCT ENCASUREMENT EXCEPT THAT A TRENCH OF LESS THAN 36" WILL NOT BE REQUIRED

TYPICAL SECTION OF TRENCH

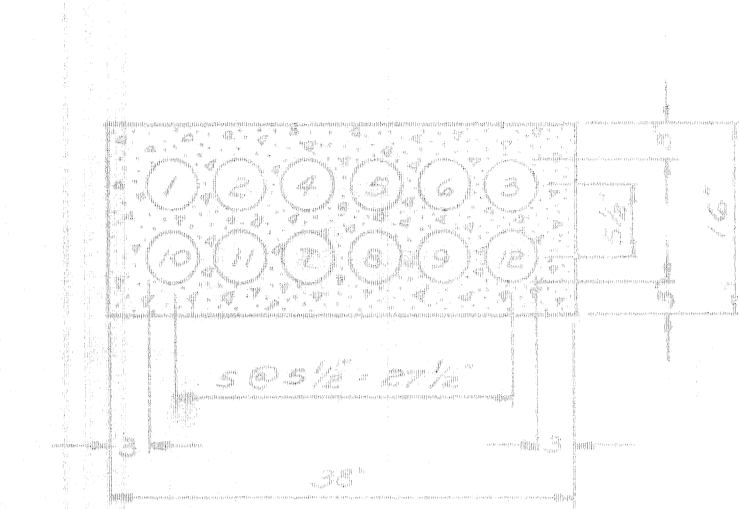
SCALE: 3/4" = 1'-0"



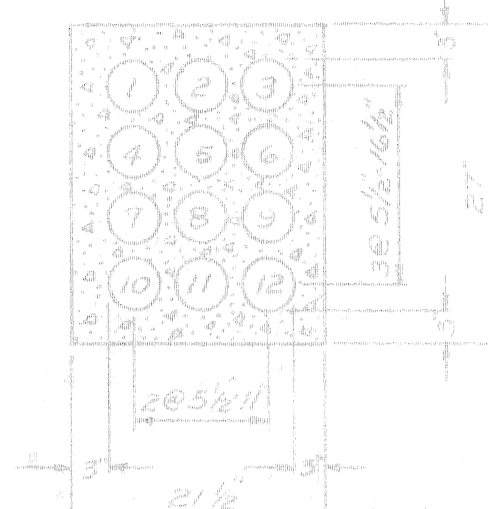
SECTION A-A



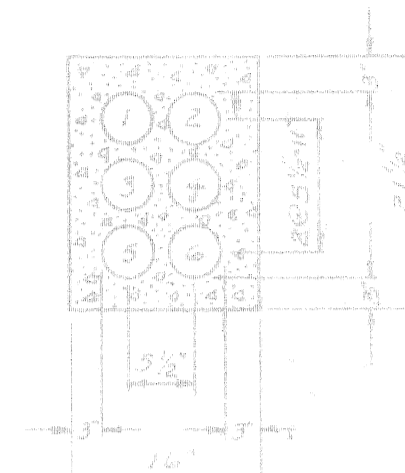
SECTION THROUGH BACKWALL SHOWING SUPPORTS FOR 12-4" DIA. ENCASED CONDUIT AND EXPANSION JOINTS



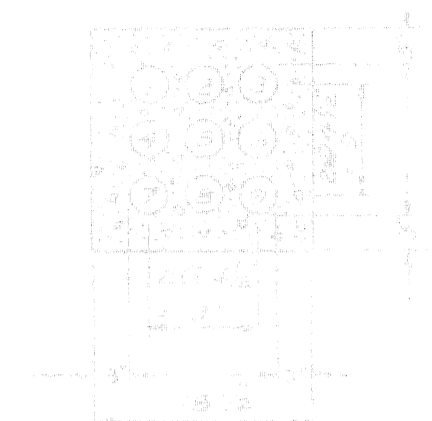
12-4" IN BRIDGE APPROACH



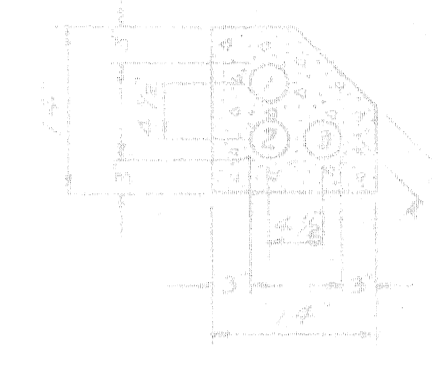
12-4" DUCTS



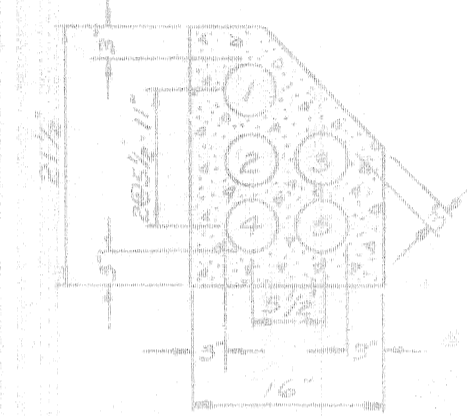
6-4" DUCTS



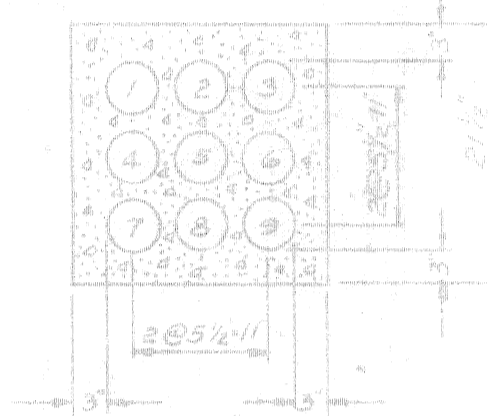
9-3" DUCTS



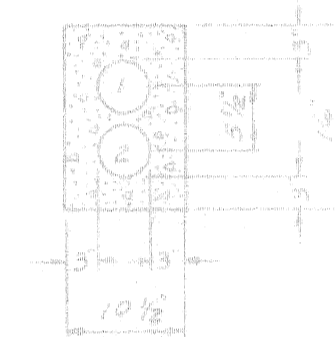
3-3" DUCTS



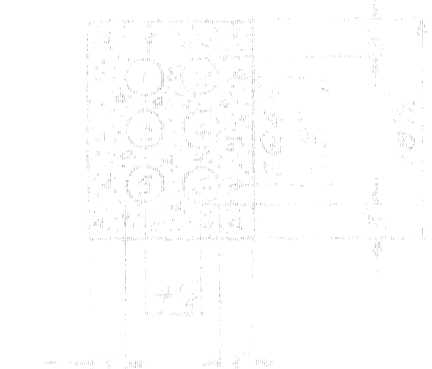
5-4" DUCTS



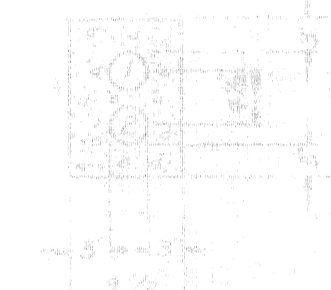
9-4" DUCTS



2-4" DUCTS



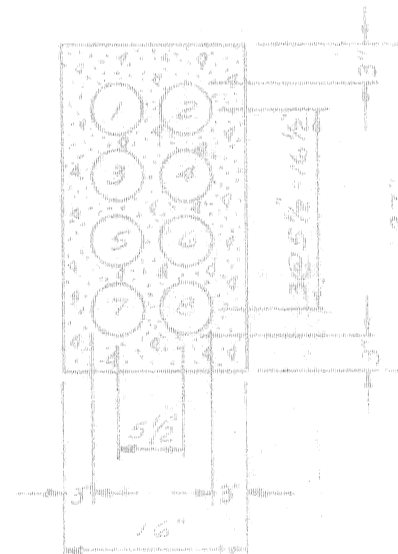
6-3" DUCTS



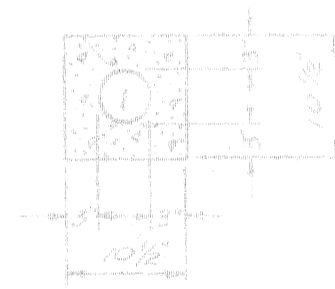
2-3" DUCTS



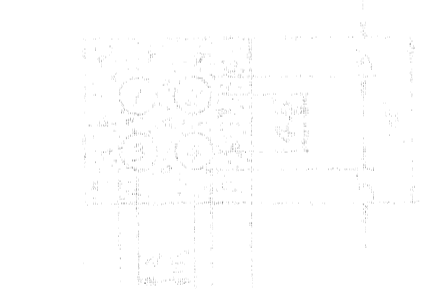
SECTION B-B



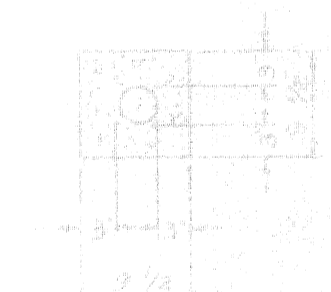
8-4" DUCTS



1-4" DUCT



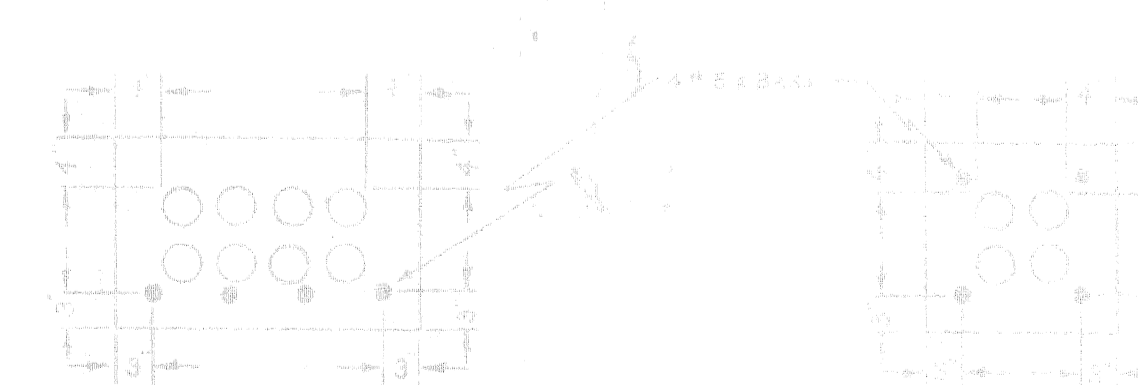
4-3" DUCTS



1-3" DUCT

TYPICAL DUCT SECTIONS

SCALE: 3/4" = 1'-0"



UNDER-PAVEMENT CONDUIT  
NO. SIZE & ARRANGEMENT VARIES AS REQUIRED.  
USE WHERE HANDHOLE DEPTH PERMITS.  
EXTEND BARS TO 3' BEYOND EXCAVATION FOR MULTIPLE JOINTS.

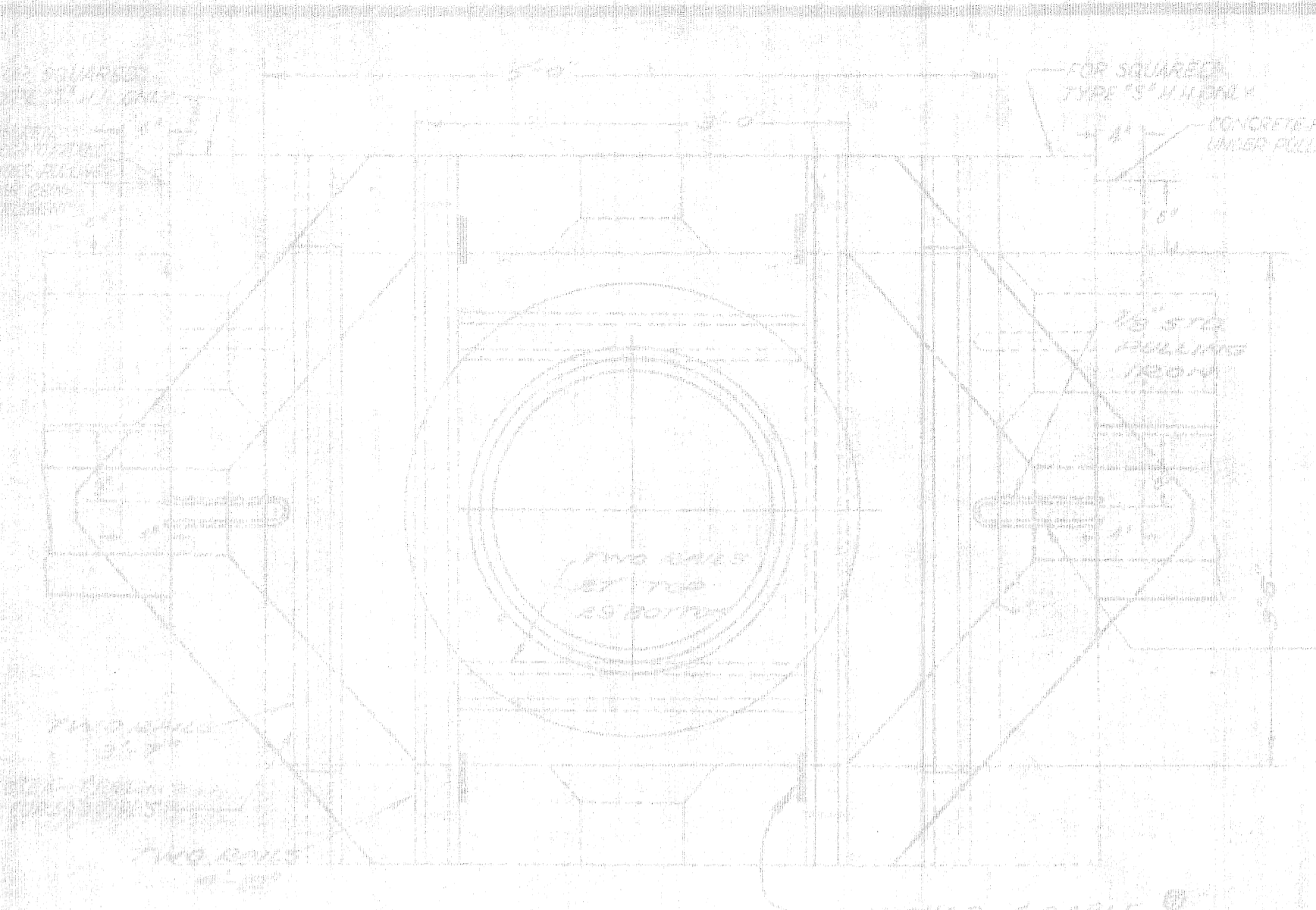
PROJECT NO. T4000(4) JOB NO. 03185

CITY OF DETROIT  
PUBLIC LIGHTING COMMISSION  
P.L.C. DETAILS  
MISCELLANEOUS DUCT SECTIONS

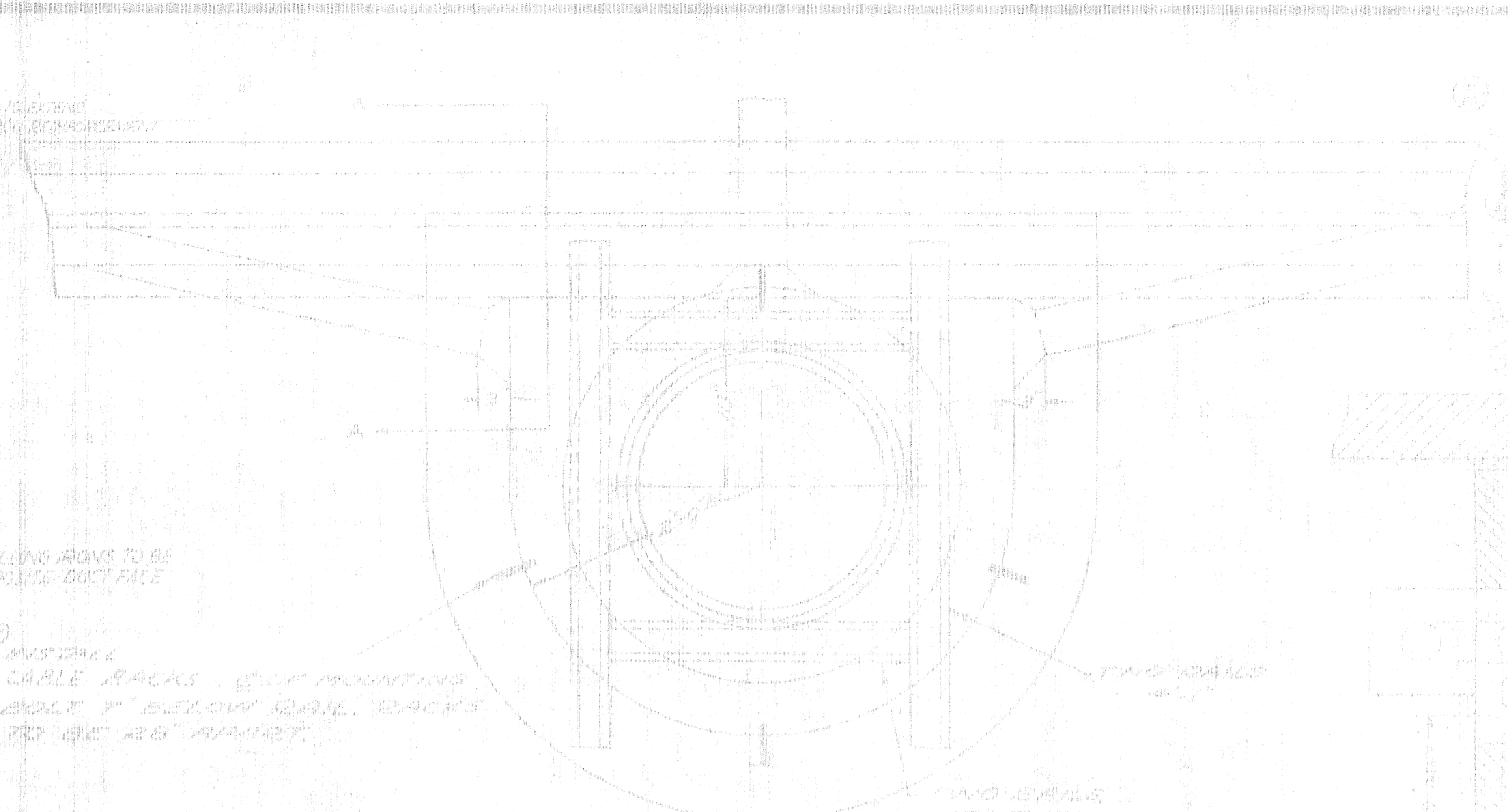
DRAWN BY DJN	FILE NO. 55-38
CHECKED BY [Signature]	SHEET NO. 24
APPROVED BY [Signature]	DATE 7-10-63

MICHIGAN STATE HIGHWAY DEPARTMENT

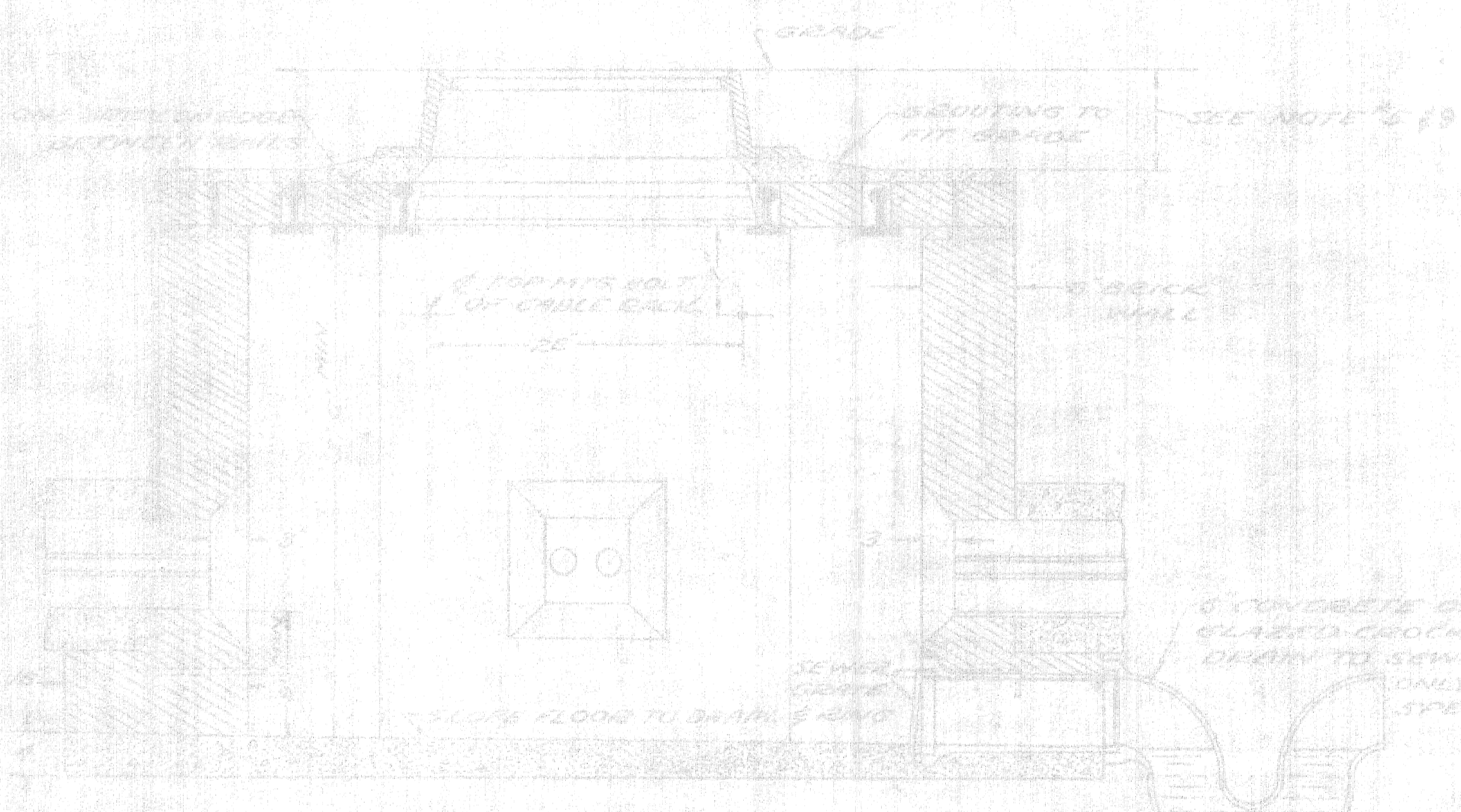
DATE 7-10-63	BY DJN
CHECKED BY [Signature]	FILE NO. 55-38
APPROVED BY [Signature]	SHEET NO. 24



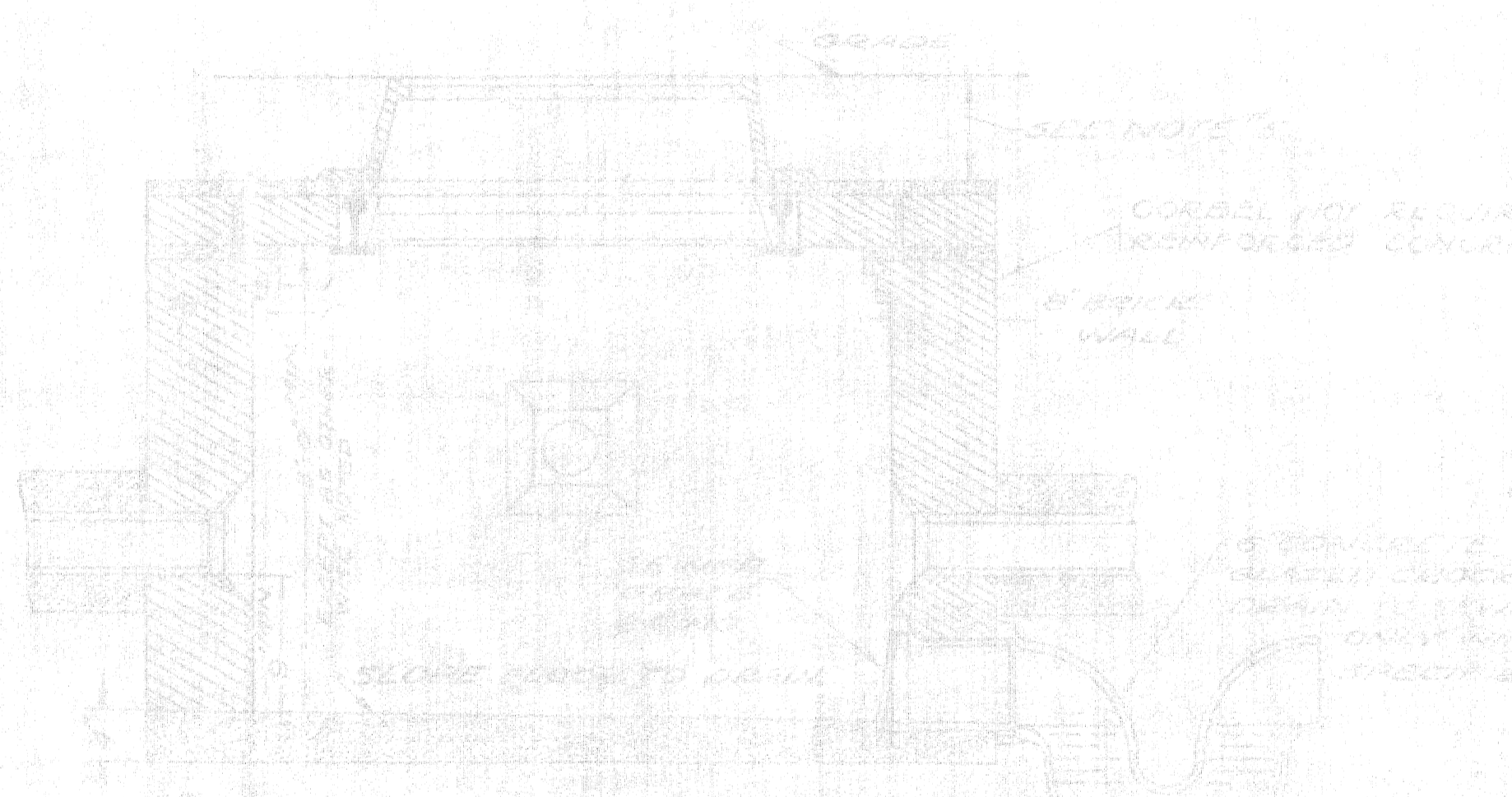
PLAN  
TYPE 'S' HANDHOLE



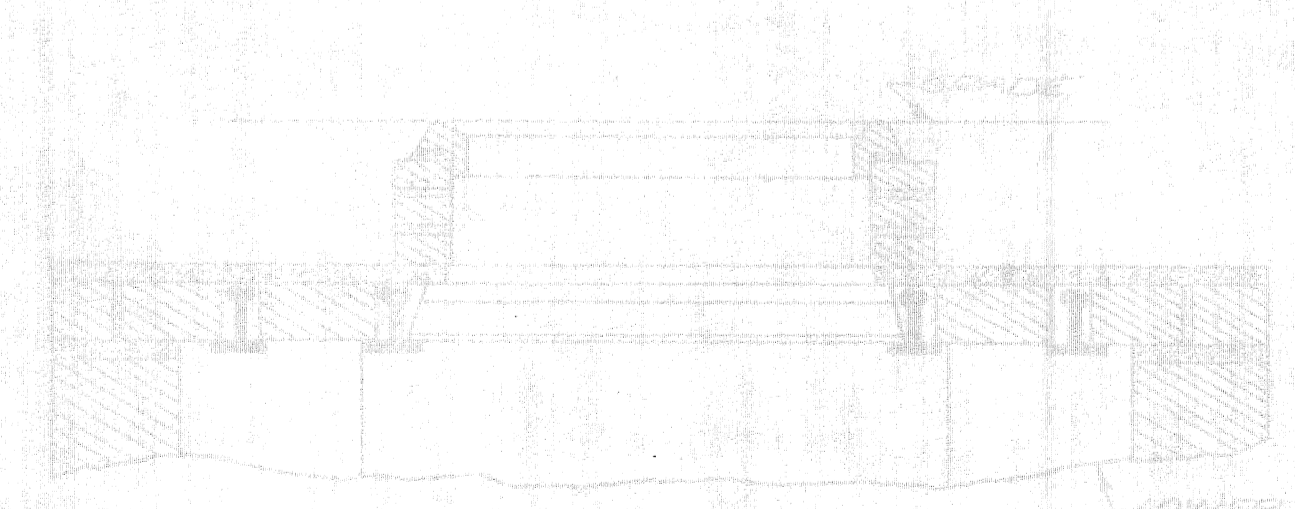
PLAN  
TYPE 'D' HANDHOLE



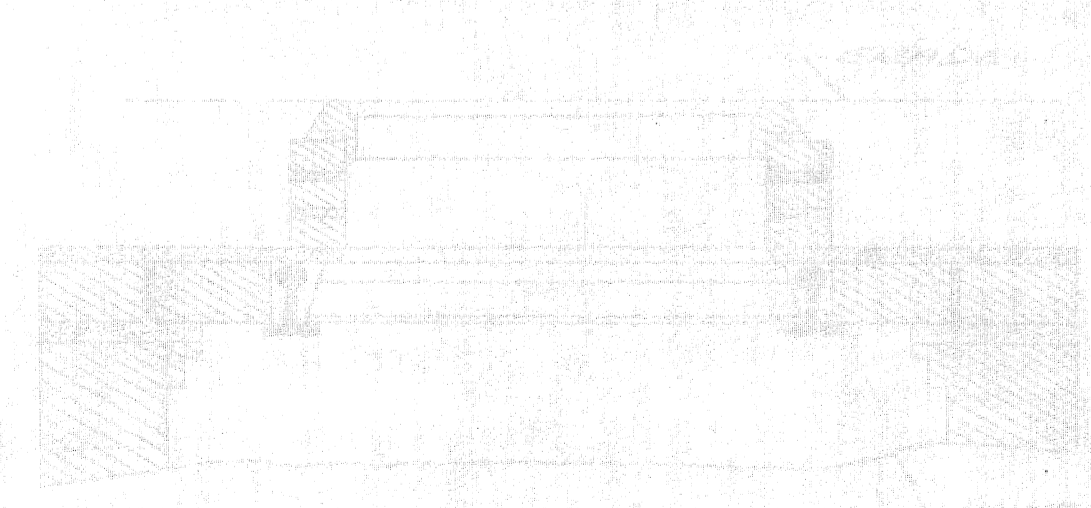
SECTION  
TYPE 'S' STREET HANDHOLE



SECTION  
TYPE 'D' STREET HANDHOLE



SECTION  
TYPE 'S' SIDEWALK HANDHOLE



SECTION  
TYPE 'D' SIDEWALK HANDHOLE

SCALE 1/8" = 1'-0"

- NOTES
- 1. THE HANDHOLES ARE TO BE CONSTRUCTED AS SHOWN AND TO BE FINISHED TO THE FINISH SURFACE OF THE FLOOR.
  - 2. THE CURBS SHALL BE CONSTRUCTED OF PORTLAND CEMENT CONCRETE.
  - 3. THE BRICK WALLS SHALL BE CONSTRUCTED OF FULL-BODY BRICK WITH 1" PLASTER ON BOTH SIDES.
  - 4. THE DRAIN COVERS SHALL BE CONSTRUCTED OF CAST IRON OR STAINLESS STEEL.
  - 5. THE DRAIN COVERS SHALL BE LOCATED TO FIT THE JOB.
  - 6. THE GRADE IS TO BE FINISHED TO THE FINISH SURFACE OF THE FLOOR.

PROJECT NO. T 4000(4) | JOB NO. 03185

CITY OF DETROIT  
PUBLIC LIGHTING COMMISSION  
RE: DETAIL OF HANDHOLES  
MICHIGAN STATE HIGHWAY DEPARTMENT