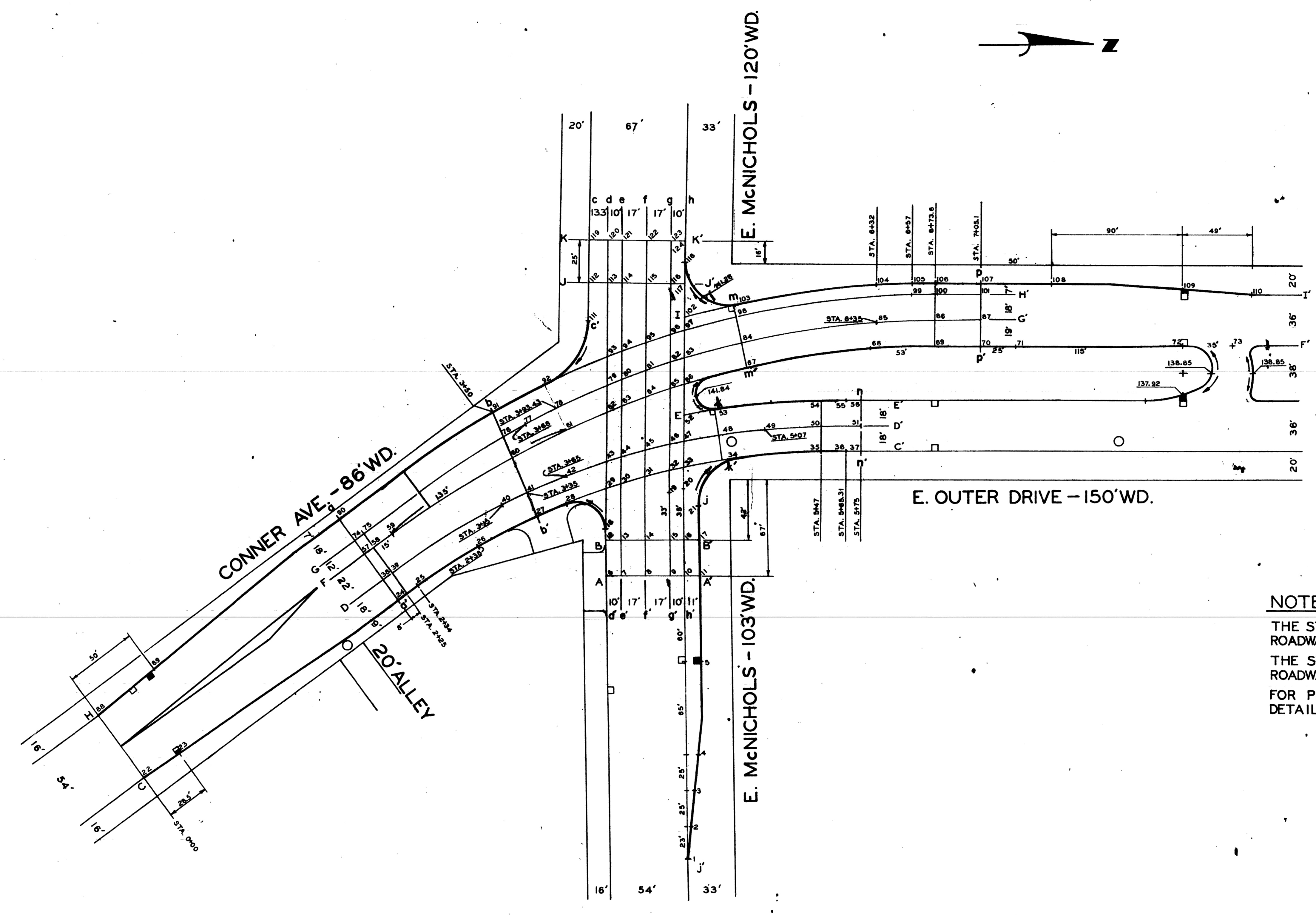


A
B
C
D
E
F
G

A.O.-2047 (1)



NOTES:
 THE STATIONING FOR THE SOUTHBOUND ROADWAY IS ALONG H-H.
 THE STATIONING FOR THE NORTHBOUND ROADWAY IS ALONG D-D.
 FOR PROFILES AND ELEVATIONS SEE DETAIL GRADES SHEETS *18 AND *19.

E. OUTER DR. N. of McNichols
 (see Chalmers for full set) #T4000(15)(18)

| NO. | DESCRIPTION | DATE |
|-----|-------------|------|
| | | |
| | | |
| | | |

REVISIONS LOCATED BY COORDINATES ON SHEET

DESIGNED BY *Brantigan*
 DRAWN BY *R Rosik*
 TRACED BY
 CHECKED BY *Talley* *Hawkins*

APPROVED
John Erickson
 ENGINEER OF STREETS
Allen E. Cooper
 ENGINEER OF EXPRESSWAYS

CITY OF DETROIT
 DEPARTMENT OF PUBLIC WORKS
 CITY ENGINEERS OFFICE
 FOR

CONNER - E. OUTER DRIVE - E. McNICHOLS
 INTERSECTIONAL IMPROVEMENT

DETAIL GRADES - PLAN

SCALE: 1" = 40'

SHEET 17 OF 38 SHEETS

PROJECT No. T 4000 (18)

DRWG No.

DATE MAR. 12, 1973