

MICHIGAN
STATE HIGHWAY DEPARTMENT
MURRAY D. VAN WAGONER
COMMISSIONER

PLAN AND PROFILE OF PROPOSED
U.S. WORKS PROGRAM GRADE CROSSING PROJECT NO. WPGM 229 SEC. B
DETROIT - BRIGHTON ROAD
WAYNE COUNTY
CITY OF DETROIT

APPROACH PLANS

- INDEX OF SHEETS
- TITLE SHEET
 - 2-3 TYPICAL CROSS SECTION AND SPECIAL DETAIL
 - SPECIAL PROVISIONS
 - PLAN - PROFILE GRAND RIVER AVE.
 - PLAN - PROFILE STANTON AVE. AND JOINT LAYOUTS
 - SEWER PROFILE
 - 9-14 DETAILED PAVEMENT GRADES
 - PUBLIC UTILITIES - EXISTING
 - PUBLIC UTILITIES - PROPOSED
 - DEPT. STREET RAILWAY PLANS
 - 22-25 PUBLIC LIGHTING COMM. PLANS
 - 26 WATER BOARD PLAN
 - 27-33 SAFETY ZONES
 - 34 LAND TIES AND BENCH MARKS
 - 35-36 QUANTITIES

STANDARDS

- E-4A-9A
- E-4A-10
- E-4A-21C
- E-4A-27
- E-4A-27A
- E-4A-27B
- E-4A-27T
- E-4A-29
- E-4A-33
- E-6A-55B
- E-4A-27F
- E-4A-66

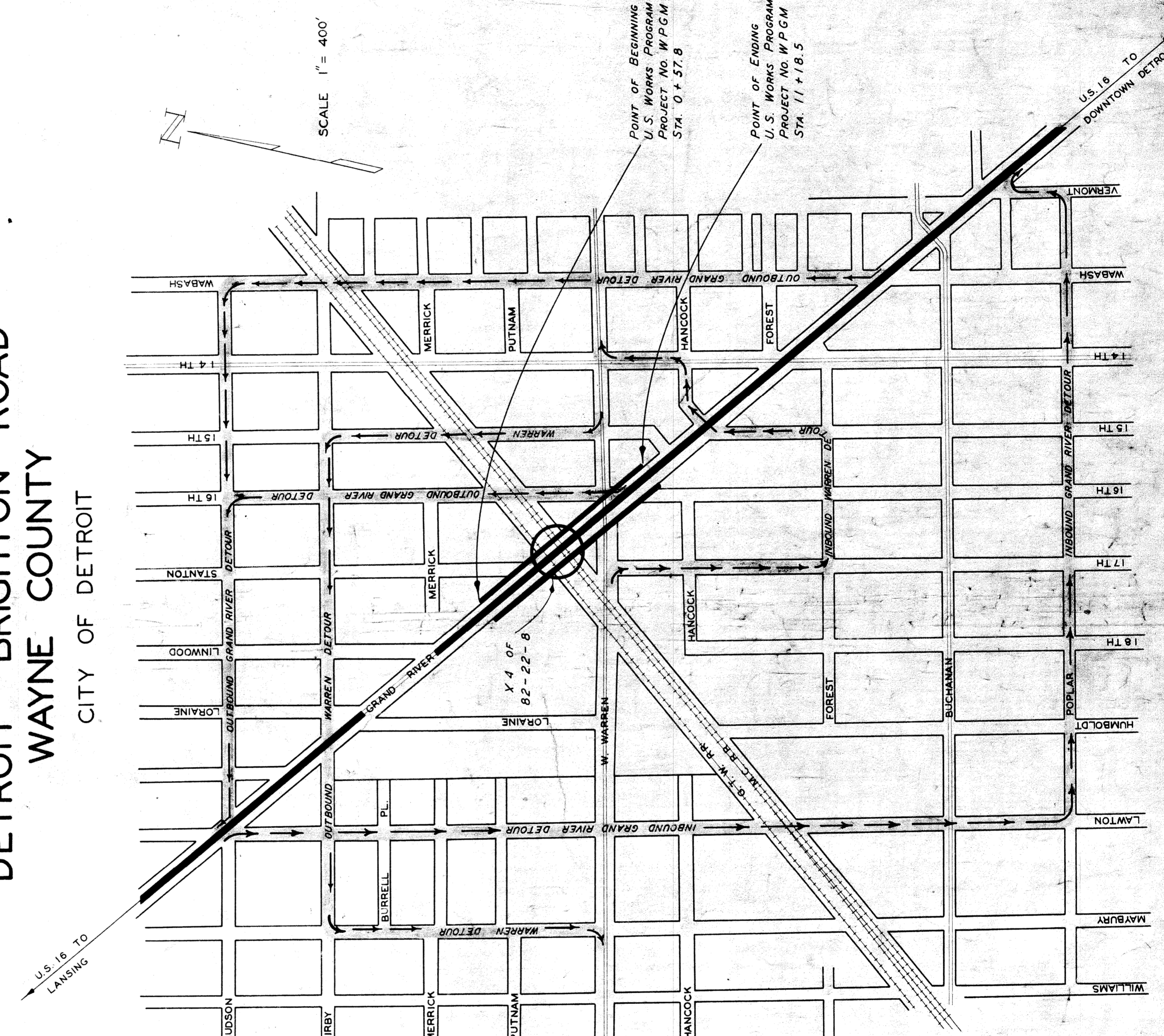
LEGEND

- IN PLACE
- POLICE TEL. M.H.
 - SEWER M.H.
 - CATCH BASIN
 - TRUCK BASIN
 - COAL M.H.
 - DETROIT EDISON M.H.
 - BELL TEL. M.H.
 - PUBLIC LIGHT CO. M.H.
 - FIRE DEPT. M.H.
 - WATER GATE M.H.
 - GAS STOP
 - POLICE BOX
 - FIRE BOX
 - MAIL BOX
 - FILLING STA. PLUG
 - PUBLIC LIGHTING CO. POLE
 - D.S.R. POLE
 - DETROIT EDISON POLE
 - BELL TEL. POLE
 - TRAFFIC LIGHT
 - SAFETY ZONE LIGHT
 - PUBLIC LIGHTING CO. LIGHT
 - FIRE HYDRANT
 - WATER CAP
 - DETROIT WATER PIT [METER]
 - MUELLER REP. LID

- PROPOSED
- SEWER - MANHOLE
 - CATCH BASIN
- SEE SHEET 17 FOR PROPOSED UTILITY LEGEND

TITLE SHEET LEGEND

- PROPOSED PROJECT
- T.L. OR F.A. PAVED
- T.L. OR F.A. IMPROVED NOT PAVED
- T.L. OR F.A. UNIMPROVED
- NON T.L. OR F.A. PAVED
- NON T.L. OR F.A. IMPROVED NOT PAVED
- NON T.L. OR F.A. UNIMPROVED
- COUNTY LINE
- CITY OR VILLAGE
- TOWNSHIP LINE
- SECTION LINE
- RAILROADS



NOTE - THE IMPROVEMENTS COVERED BY THESE PLANS SHALL BE DONE IN ACCORDANCE WITH THE MICHIGAN STATE HIGHWAY DEPARTMENTS 1934 STANDARD SPECIFICATIONS, AND STANDARDS AND SPECIFICATIONS OF THE FOLLOWING, AS REFERRED TO IN THE PLANS -

- THE DEPARTMENT OF STREET RAILWAYS - 11200 SHOEMAKER AVE., DETROIT.
- THE PUBLIC LIGHTING COMMISSION - DETROIT.
- THE DEPARTMENT OF WATER SUPPLY - DETROIT.
- THE DETROIT POLICE DEPARTMENT - DETROIT.
- THE DETROIT FIRE DEPARTMENT - DETROIT.

THESE STANDARDS AND SPECIFICATIONS

THE CONTRACTOR SHALL SECURE FROM THE ABOVE DEPARTMENTS.

CONTRACT FOR G.A.D.S. AND CONC. BASE & SHEET ASHALL WPGM PROJECT NO. WPGM 229 - B

CHECKED: *John J. Baetzman* CHIEF SURVEYOR MUNICIPAL ENGR. DATE: 4-10-36

CORRECT: *John J. Baetzman* CHIEF SURVEYOR MUNICIPAL ENGR. DATE: 4-10-36

RECOMMENDED FOR APPROVAL: *John J. Baetzman* CHIEF SURVEYOR MUNICIPAL ENGR. DATE: 4-10-36

APPROVED: MURRAY D. VAN WAGONER STATE HIGHWAY COMMISSIONER DATE: 4-14-36

BY: *H. O. ...* DEPUTY COMMISSIONER - CHIEF ENGINEER DATE: 4-14-36

RECOMMENDED FOR APPROVAL: *H. O. ...* DISTRICT ENGR. DATE: 4-14-36

RECOMMENDED FOR APPROVAL: *H. O. ...* CHIEF ENGR. DATE: 4-14-36

APPROVED: *H. O. ...* CHIEF DATE: 4-14-36

Grand River U.S. 16
Grade Separation
Grade & Plan

FED. ROAD DIST. NO.	STATE	SECTION	YEAR	SHEET NO.	TOTAL SHEETS
7	MICH.	229 SEC. B		1	1
US-16	WAYNE	DETROIT		1	1

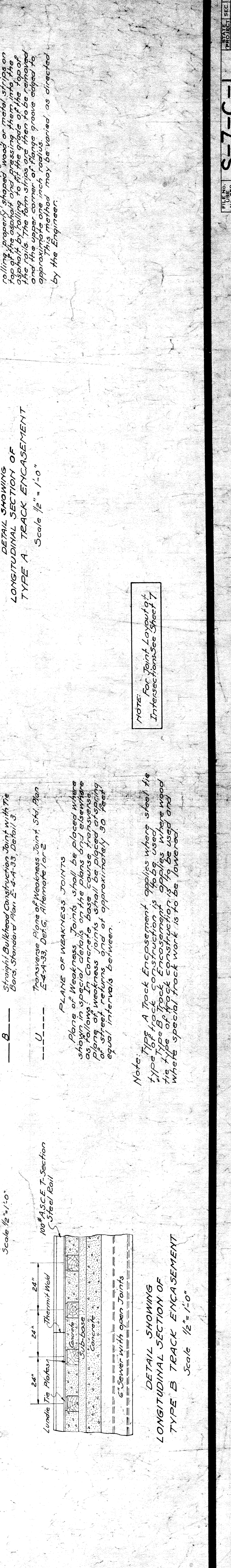
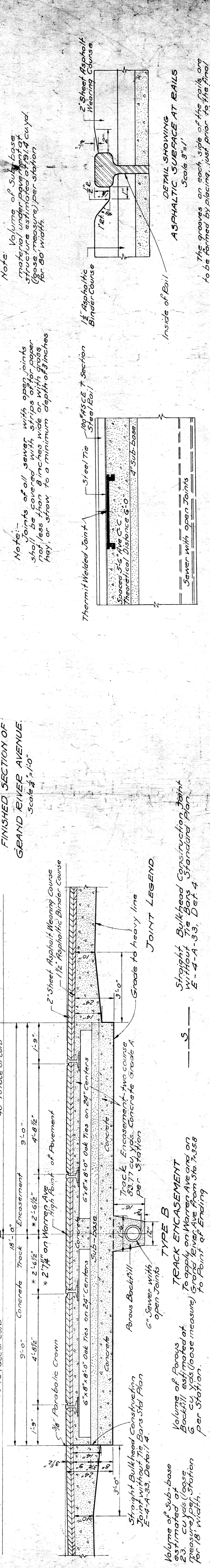
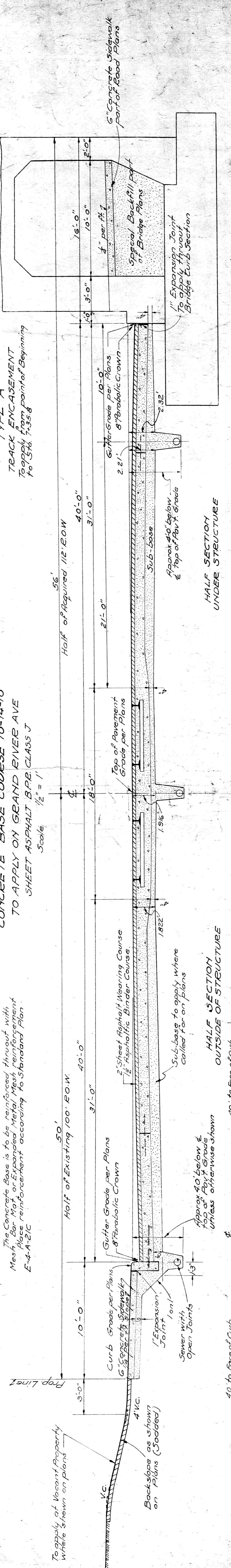
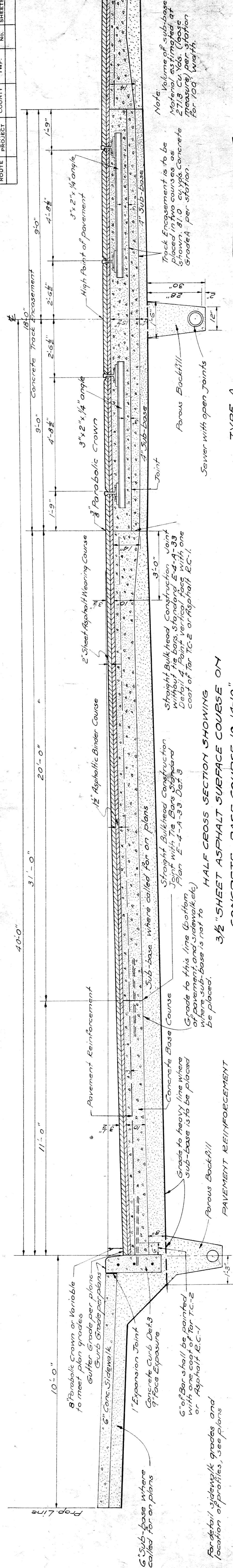
PROJECT NO. 82-45-B-1
S-7-C-1
APPROXIMATE DATE: 4-14-36

TYPICAL CROSS-SECTIONS

FED. ROAD DIST. NO.	STATE	PROJECT	SECTION	SHEET NO.	TOTAL SHEETS
7	MICH.	22936C-8			

FED. ROAD DIST. NO.	STATE	PROJECT	SECTION	SHEET NO.	TOTAL SHEETS
U.S. 16	MICH.	22-45	WAYNE	2	

FED. ROAD DIST. NO.	STATE	PROJECT	SECTION	SHEET NO.	TOTAL SHEETS
	MICH.				



Note: Volume of sub-base material under pavement at structure estimated at 79.4 cu yd. (loose measure) per station for 80 width.

Note: Joints of all gages with open joints shall be covered with strips of paper not less than 8 inches wide or with grass hay, or straw to a minimum depth of 8 inches.

Note: Volume of sub-base material under pavement at structure estimated at 79.4 cu yd. (loose measure) per station for 80 width.

Note: Joints of all gages with open joints shall be covered with strips of paper not less than 8 inches wide or with grass hay, or straw to a minimum depth of 8 inches.

Note: Volume of sub-base material under pavement at structure estimated at 79.4 cu yd. (loose measure) per station for 80 width.

Note: Volume of sub-base material under pavement at structure estimated at 79.4 cu yd. (loose measure) per station for 80 width.

Note: Volume of sub-base material under pavement at structure estimated at 79.4 cu yd. (loose measure) per station for 80 width.

NOTE: For Joint Layout at Intersections See Sheet 7

NOTE: Type A Track Encasement applies where steel tie type of track construction is to be used. Type B Track Encasement applies where wood where special track work is to be lowered.

PLANE OF WEAKNESS JOINTS
Plane of Weakness Joints shall be placed where shown on Plans. Details shall be placed where as follows: In concrete base plans the plane of weakness joints shall be placed at spacing of street returns and of approximately 30 feet equal intervals between.

Volume of Sub-base estimated at 23.77 cu yds (loose measure) per station for 18' width.

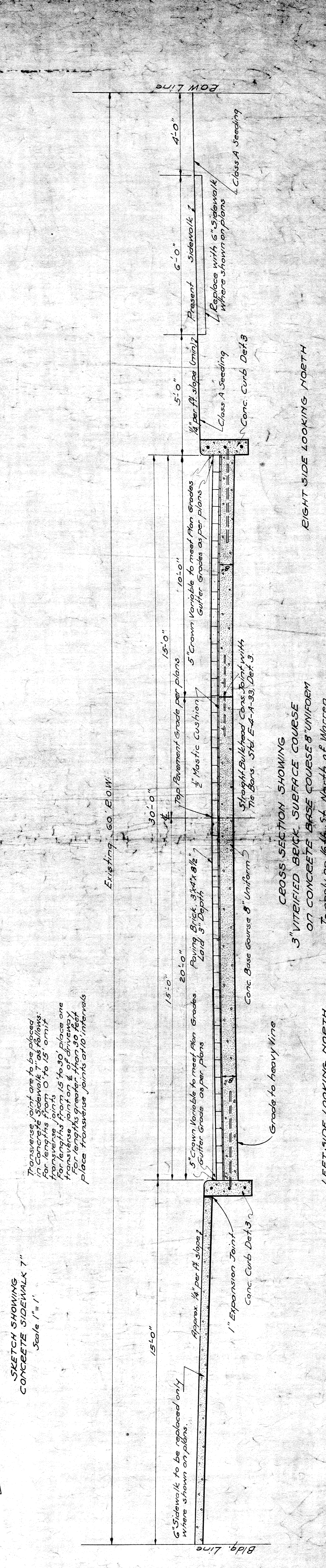
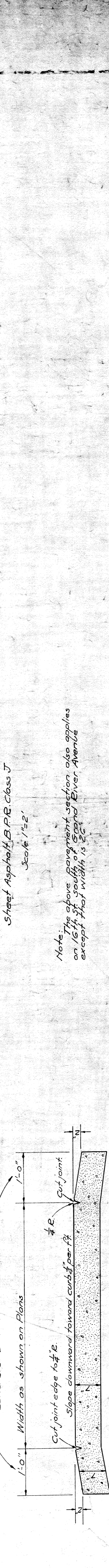
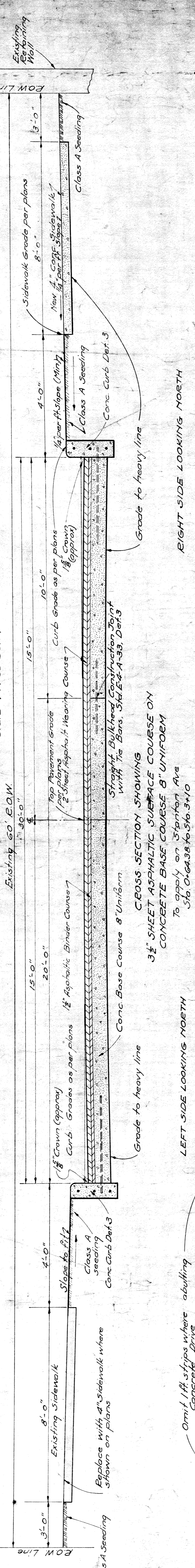
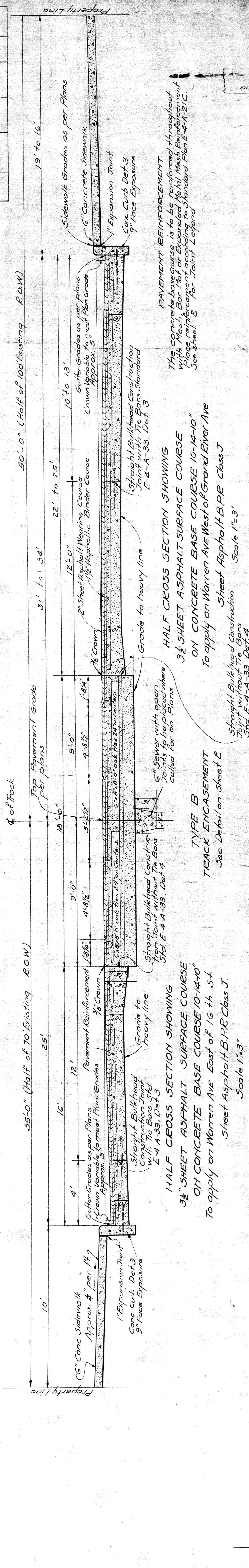
Volume of Parous Backfill estimated at 6 cu yds (loose measure) per station to Point of Ending.

Volume of Sub-base estimated at 23.77 cu yds (loose measure) per station for 18' width.

Volume of Parous Backfill estimated at 6 cu yds (loose measure) per station to Point of Ending.

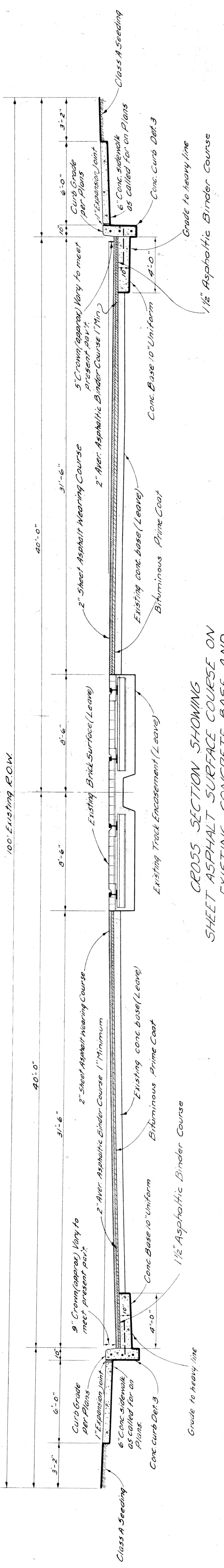
TYPICAL CROSS-SECTIONS

FILE NO.	7	STATE	MICH.	LY/PC/M YEAR	229-50c 3	SHEET NO.	3	TOTAL SHEETS	3
ROUTE	US 16	CITY	WAYNE	PROJECT	DEWEY	SHEET NO.	3	TOTAL SHEETS	3
ROUTE	US 16	CITY	WAYNE	PROJECT	DEWEY	SHEET NO.	3	TOTAL SHEETS	3



TYPICAL CROSS-SECTIONS

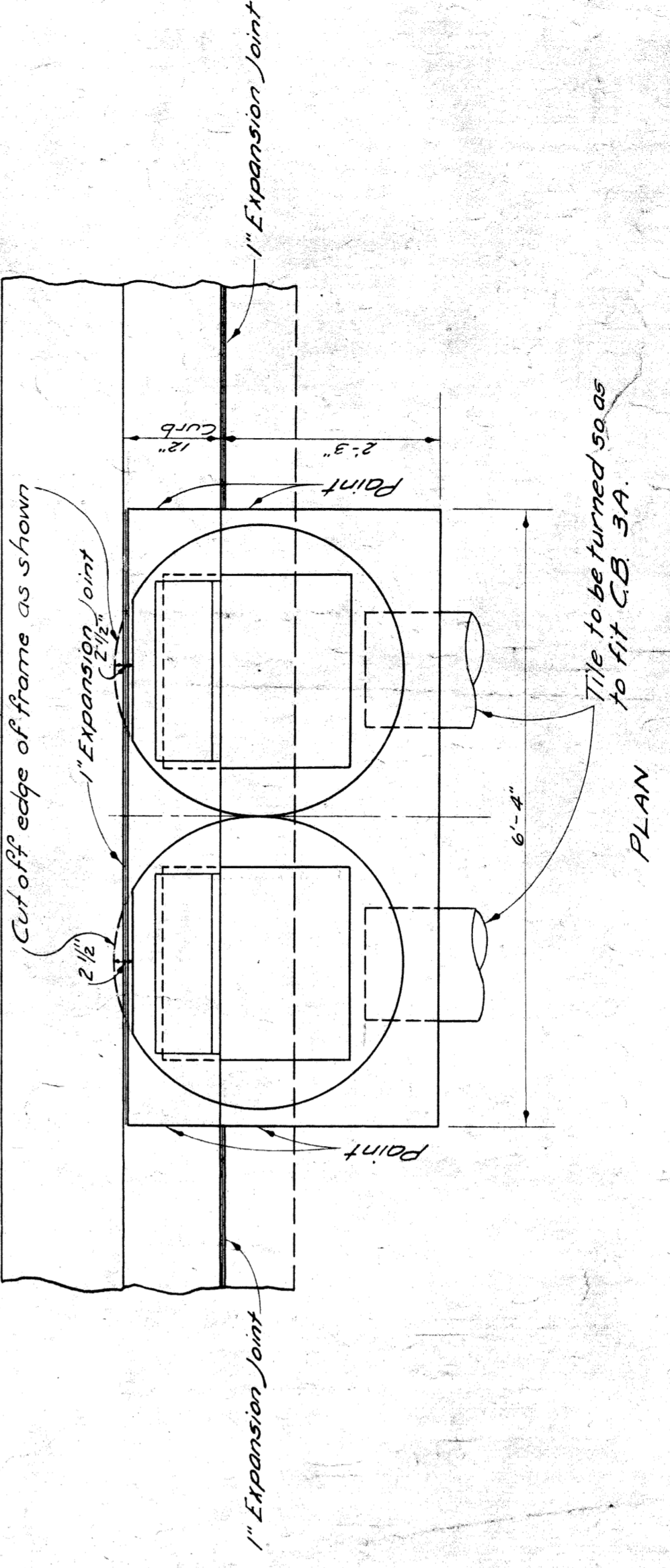
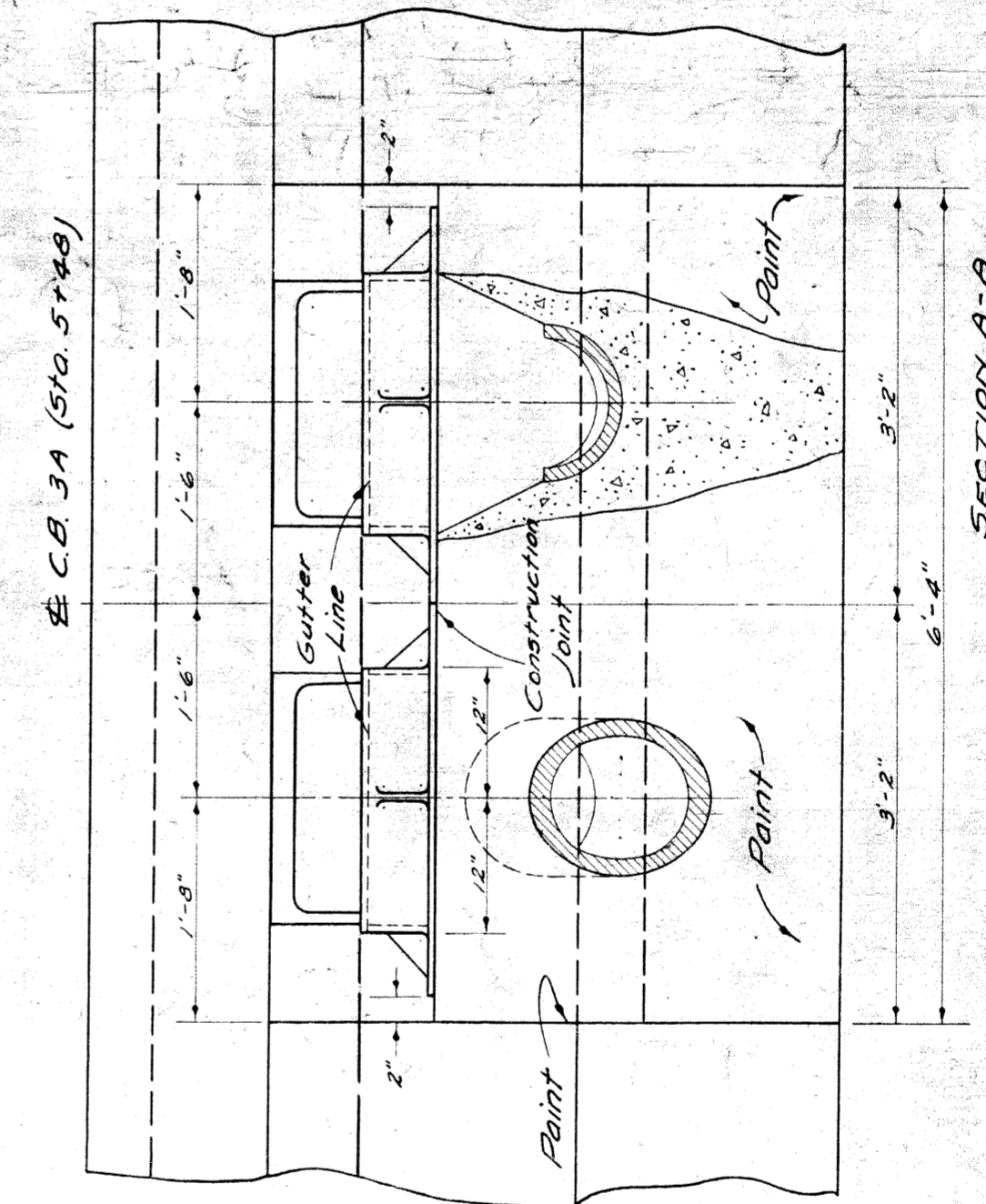
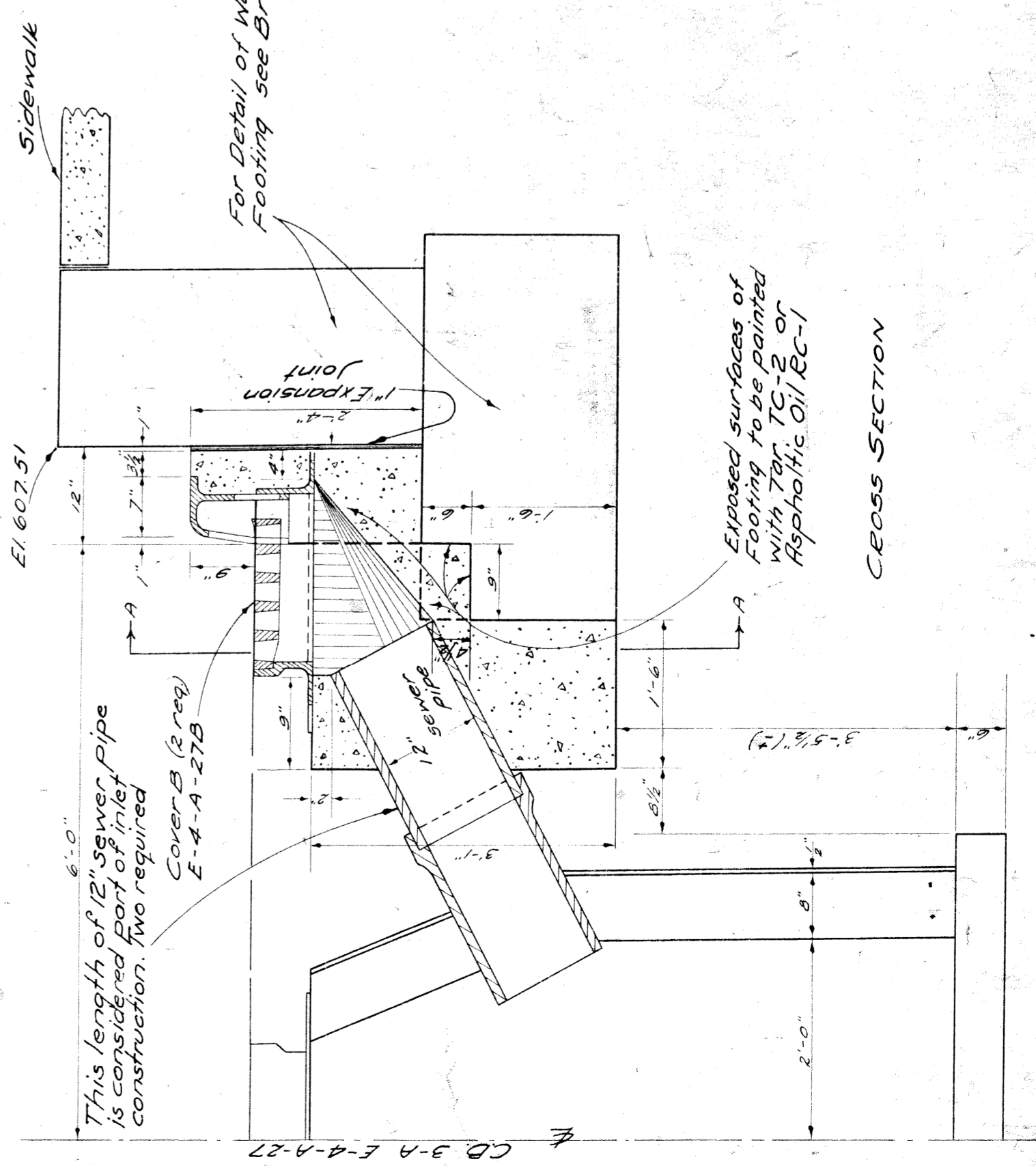
FED. ROAD DIST. NO.	STATE	FISCAL YEAR	SHEET NO.	TOTAL SHEETS
7	MICH.	1959	277	277
ROUTE PROJECT	COUNTY	FISCAL YEAR	SHEET NO.	TOTAL SHEETS
25-16	Wayne	1959	277	277
FED. ROAD DIST. NO.	STATE	FISCAL YEAR	SHEET NO.	TOTAL SHEETS
7	MICH.	1959	277	277
ROUTE PROJECT	COUNTY	FISCAL YEAR	SHEET NO.	TOTAL SHEETS
25-16	Wayne	1959	277	277



CROSS SECTION SHOWING SHEET ASPHALT SURFACE COURSE ON EXISTING CONCRETE BASE AND CONCRETE BASE COURSE WIDENING 10" UNIFORM
 To apply on Grand River from Sta 0+478 to Sta 0+528 Lt. and Sta 0+530 to Sta 0+578 Rt.
 Scale 1" = 4'

Note:
 Asphaltic Binder Course for this section is estimated in tons.

Note:
 The above section also applies on Grand River Ave from Sta 11+18.5 to Sta 11+50 except that existing base and curbs are to be left in place and concrete base course widening does not apply.



DETAIL OF SPECIAL INLET
 To be placed at Sta 5+48 Rt & Lt.
 Scale 3/4" = 1'-0"

This length of 12" sewer pipe is to be installed as required for construction. Two required covers (2 req) E-4-A-27B

For Detail of Walls & Footing see Bridge Plans

Exposed surfaces of Footing to be painted with Top TC-2 or Asphaltic Oil BC-1