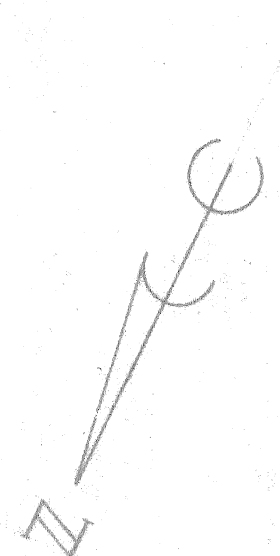
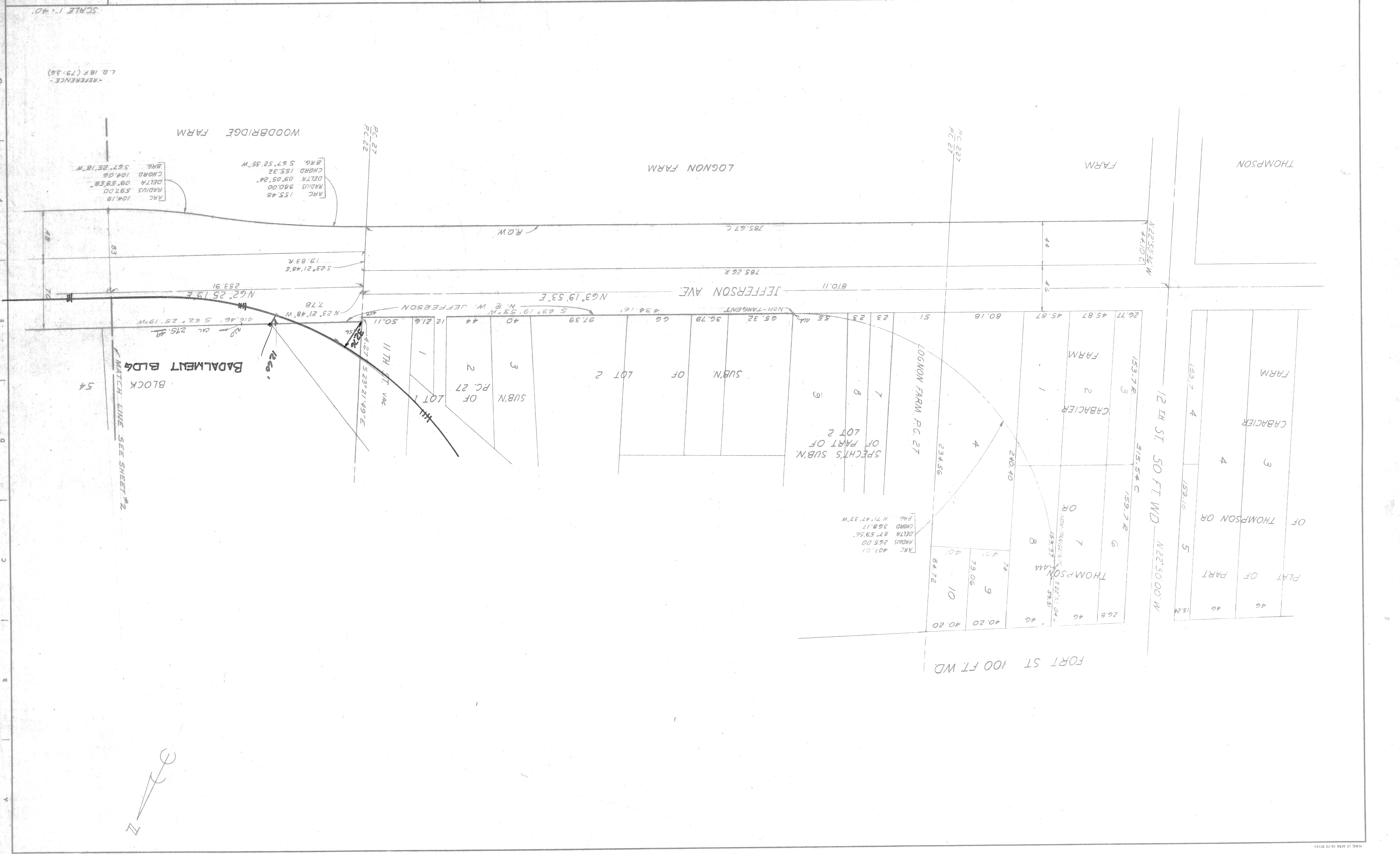


NO.	DATE	DESCRIPTION

APPROVED:	DESIGNED BY:	DRAWN BY:	TRACED BY:	CHECKED BY:
	D.L.M.			
SR. ASSOCIATE CIVIL ENGR.				
HEAD ENGINEER				
DIRECTOR OF CITY ENGR. DEPT.				

CITY OF DETROIT
 CITY ENGINEERING DEPARTMENT
 BUREAU OF SURVEYS
 WIDENING OF JEFFERSON AVE
 3RD STREET TO 12TH STREET

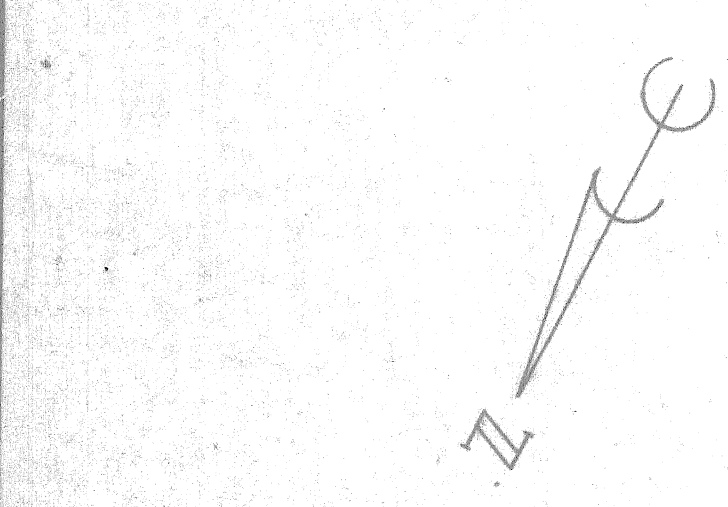
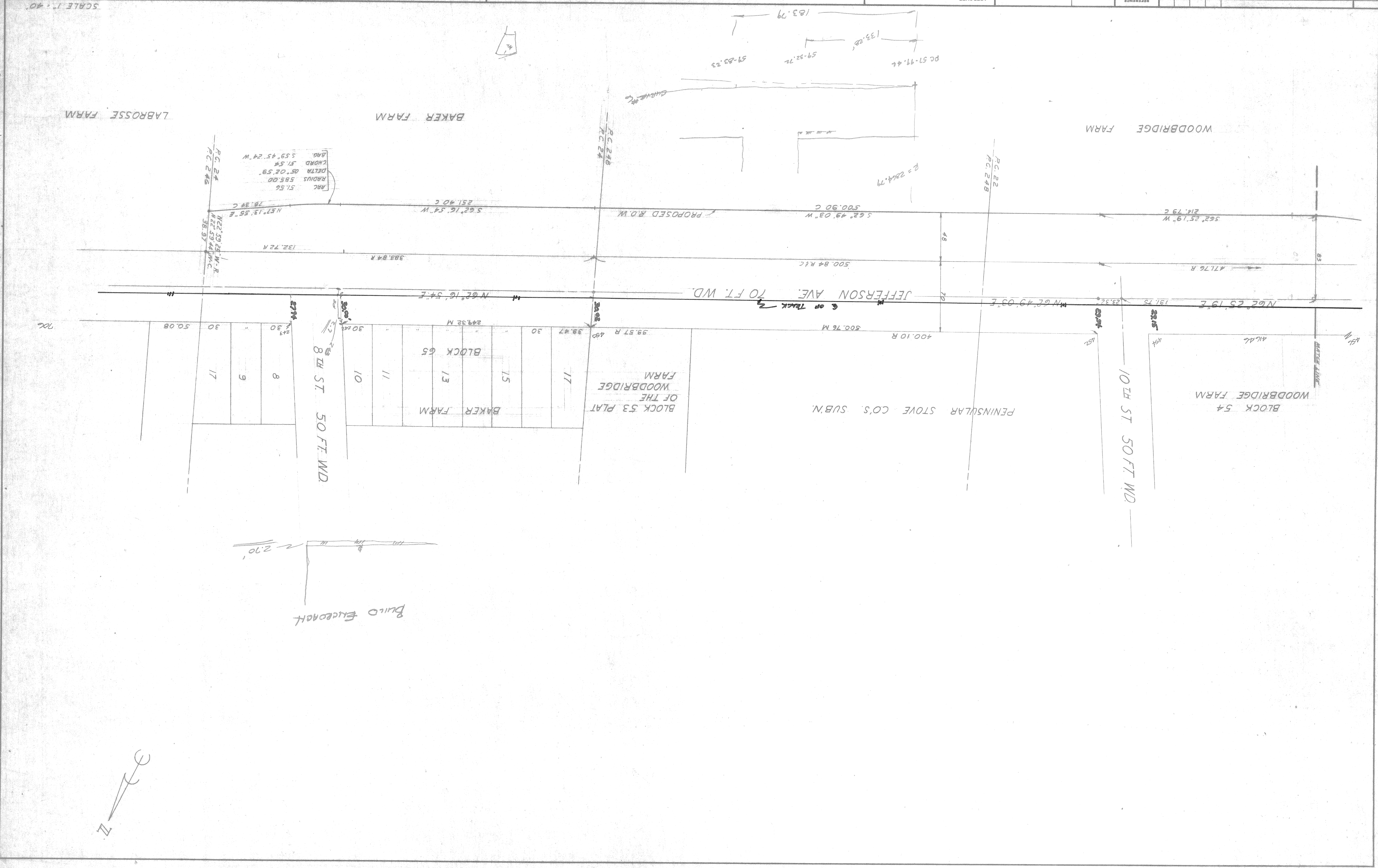
DATE 10-29-00
 DRWG NO. 5-028
 CONTRACT NO.
 SHEET 1 OF 4 SHEETS



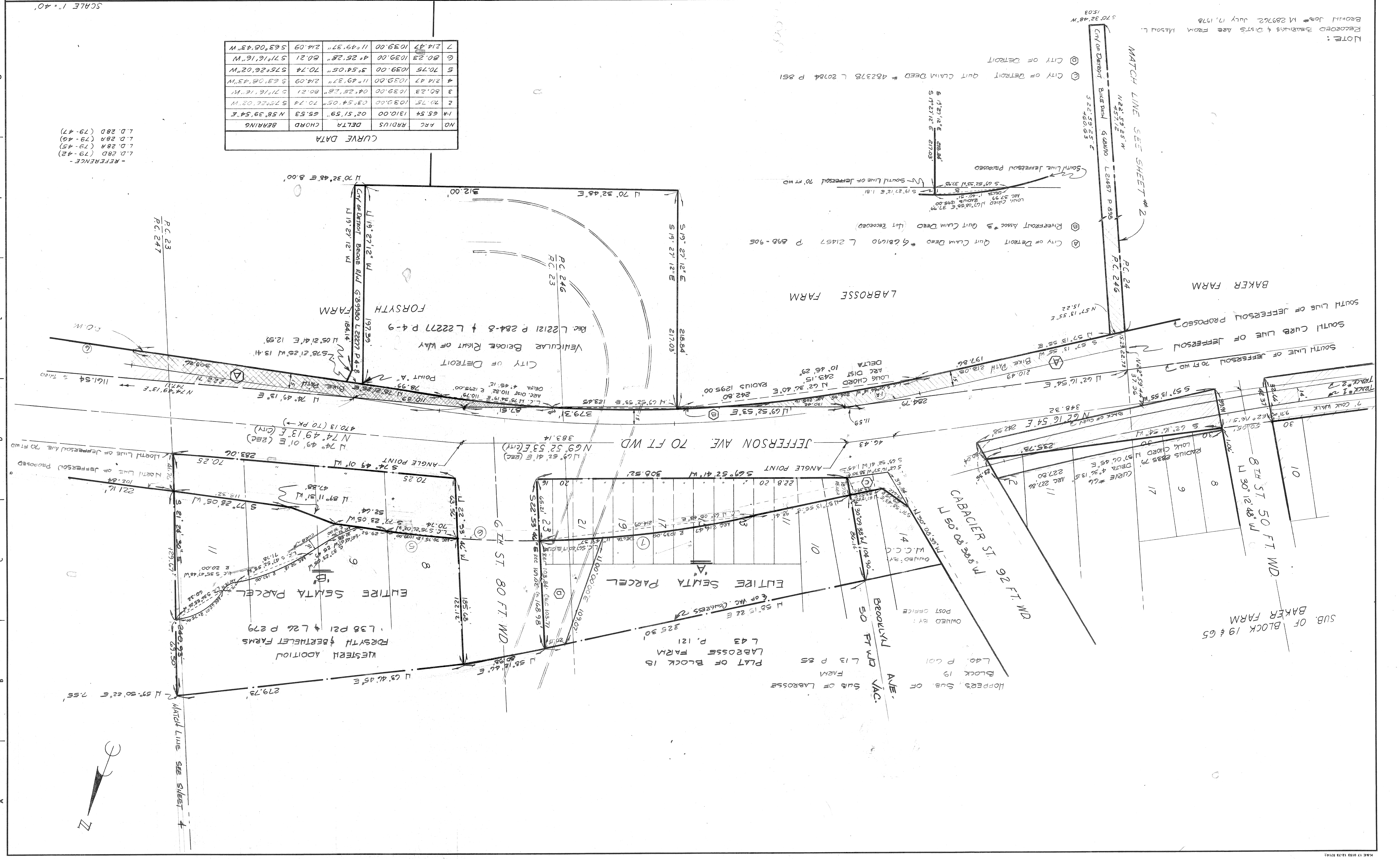
SCALE 1" = 40'

-REFERENCE -
 L.D. 18 F (79-36)

DATE	10-29-80	DRAWG NO. 5-628	SHEET 2 OF 4 SHEETS	CONTRACT NO.	WIDENING OF JEFFERSON AVE. 3RD STREET TO 12TH STREET	CITY OF DETROIT BUREAU OF SURVEYS	DIRECTOR OF CITY ENGR. DEPT.	CHECKED BY	DESIGNED BY	DRAWN BY	D.L.M.	SR. ASSOCIATE CIVIL ENGR.	HEAD ENGINEER	REVISIONS LOCATED BY COORDINATES ON SHEET			
NO.	NO.													DATE	BY		



SCALE 1" = 40'



CURVE DATA

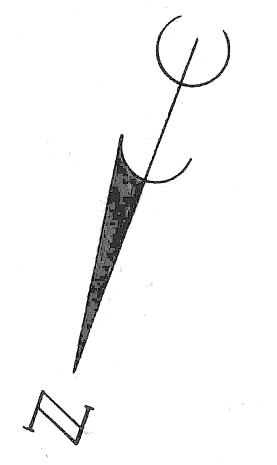
NO	RADIUS	DELTA	CHORD	BEARING
1-A	65.54	1310.00	65.53	N 58° 39' 54" E
2	70.75	1039.00	70.74	S 75° 26' 02" W
3	60.23	1039.00	80.21	S 71° 16' 16" W
4	214.47	1039.00	214.09	S 63° 08' 43" W
5	70.75	1039.00	70.74	S 75° 26' 02" W
6	80.23	1039.00	80.21	S 71° 16' 16" W
7	214.47	1039.00	214.09	S 63° 08' 43" W

- REFERENCE -
L.D. 28D (79-42)
L.D. 28A (79-45)
L.D. 28B (79-46)
L.D. 28D (79-47)

NOTE:
RECORDED BEARINGS & DIST. ARE FROM MASON L. BOUND JOB # M 289762 JULY 17, 1978

CITY OF DETROIT QUIT CLAIM DEED # 482378 L 20784 P 851
CITY OF DETROIT QUIT CLAIM DEED # 621690 L 21457 P 898-905
RIVERFRONT ASSOC # 3 QUIT CLAIM DEED (NOT RECORDED)

SUB. OF BLOCK 19 & 65
BAKER FARM



NO.	DESCRIPTION	DATE	BY
1	DESIGNED BY		D.L.M.
2	DRAWN BY		
3	TRACED BY		
4	CHECKED BY		
5	APPROVED		

APPROVED: _____
 SR. ASSOCIATE CIVIL ENGR.
 HEAD ENGINEER
 DIRECTOR OF CITY ENGR. DEPT.

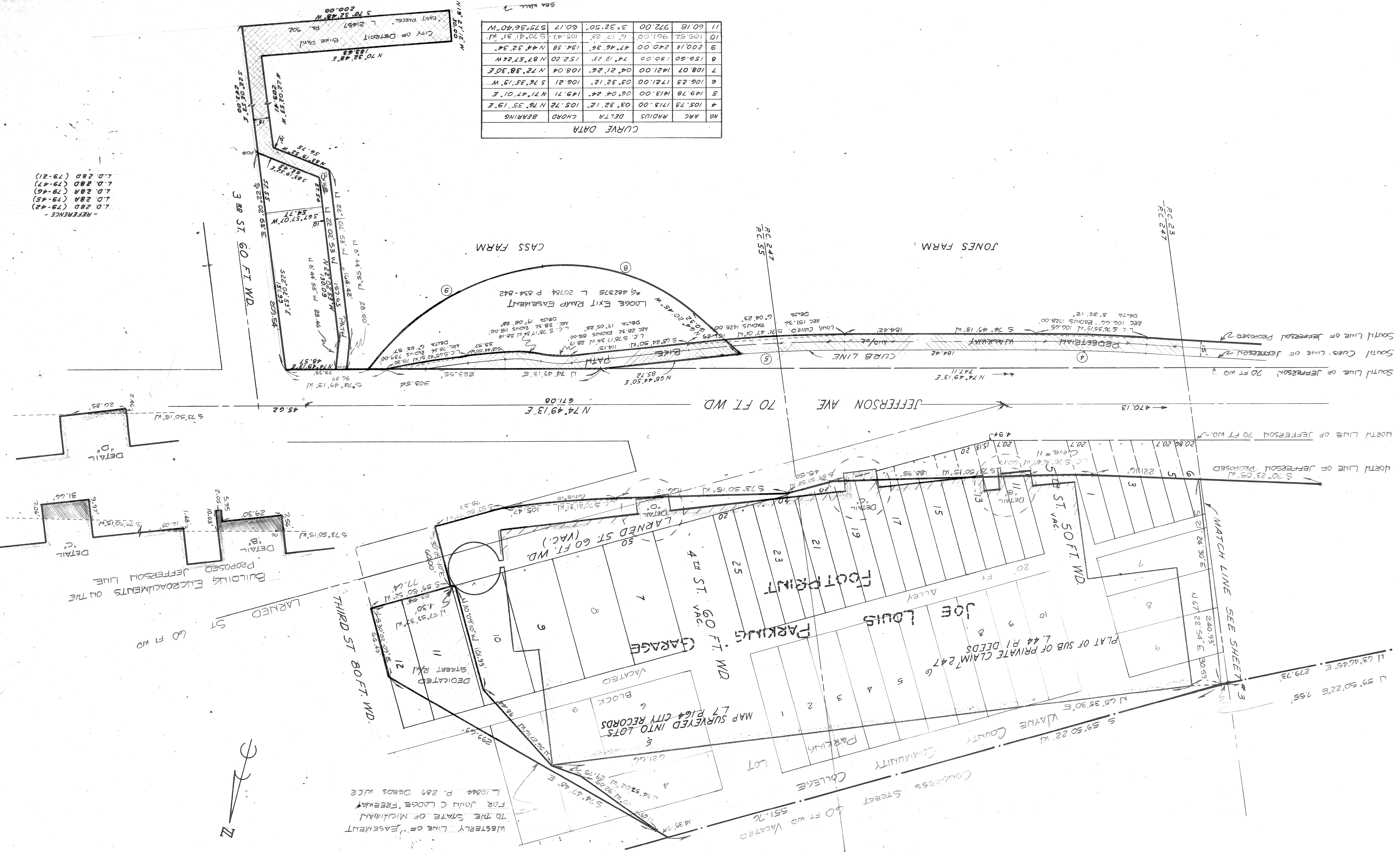
CITY OF DETROIT
 CITY ENGINEERING DEPARTMENT
 BUREAU OF SURVEYS

WIDENING OF JEFFERSON AVE
 3RD STREET TO 12TH STREET

DATE: 10-29-80
 DRWG NO. 5-628
 CONTRACT NO.
 SHEET 4 OF 4 SHEETS

CURVE DATA

NO.	ARC	RADIUS	DELTA	CHORD	BEARING
4	105.73	1713.00	03° 32' 12"	105.72	N 76° 35' 19" E
5	149.78	1413.00	06° 04' 24"	149.71	N 71° 47' 01" E
6	106.23	1721.00	03° 32' 12"	106.21	S 76° 35' 19" W
7	108.07	1421.00	04° 21' 26"	108.04	N 72° 38' 30" E
8	150.60	190.00	74° 13' 23"	152.20	N 87° 57' 26" W
9	200.18	240.00	47° 46' 36"	194.38	N 44° 32' 34" W
10	105.52	961.00	6° 17' 28"	105.42	S 70° 41' 31" W
11	60.18	972.00	3° 32' 50"	60.17	S 75° 36' 40" W



- REFERENCE -
 L.D. 280 (79-42)
 L.D. 280 (79-45)
 L.D. 280 (79-46)
 L.D. 280 (79-47)
 L.D. 280 (79-21)

