

RIVERSIDE PARK

IMPROVEMENTS

PREPARED BY:

CITY OF DETROIT

Coleman A. Young, Mayor

RECREATION DEPARTMENT

Daniel H. Krichbaum, Director

LANDSCAPE DESIGN UNIT

Richard G. Hautau

CHIEF OF LANDSCAPE ARCHITECTURE

SHEET INDEX

SHEET NO.

TITLE

1 — EXISTING CONDITIONS

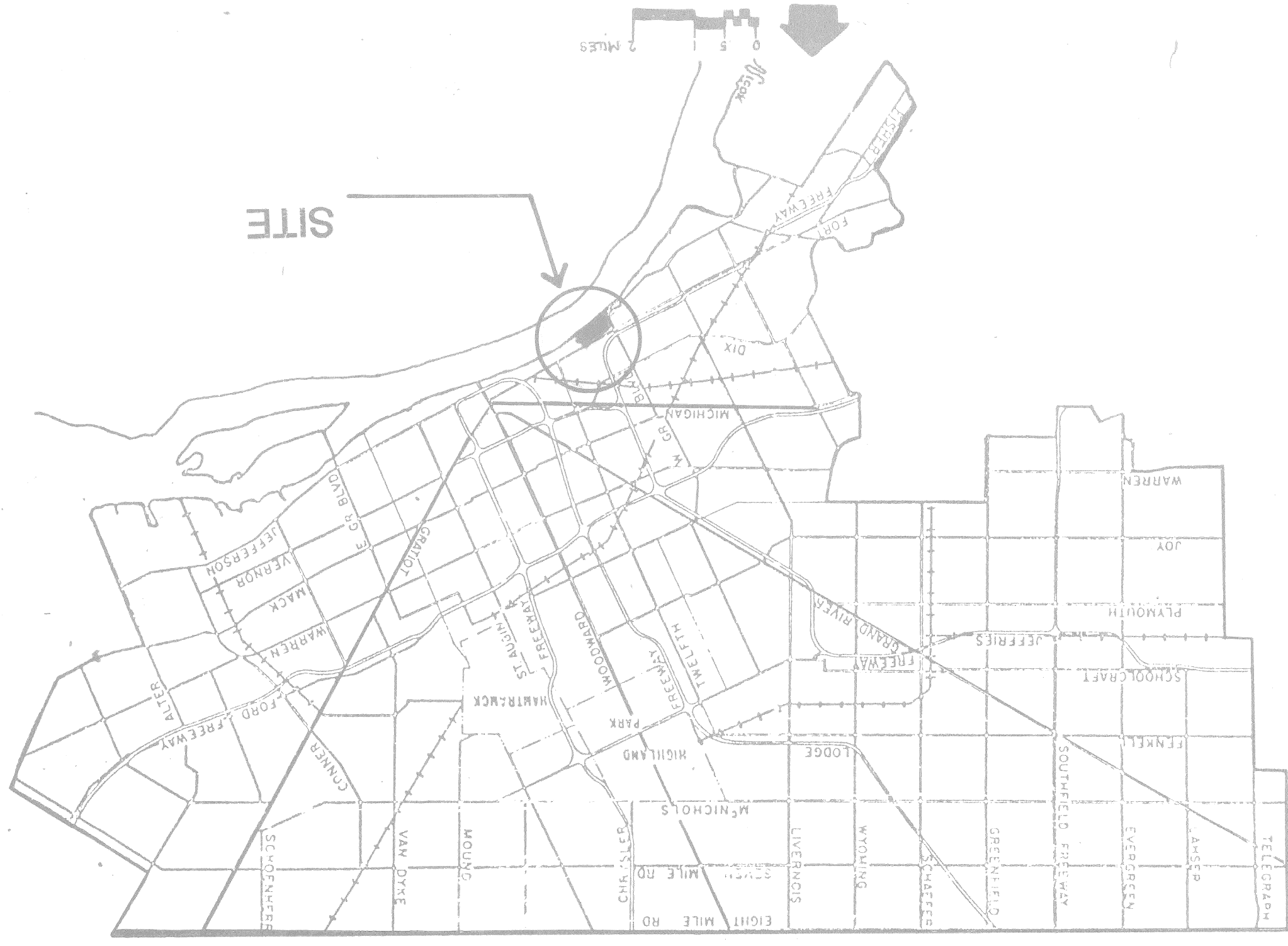
2 — PROPOSED IMPROVEMENTS
ALTERNATIVE #1

3 — PROPOSED IMPROVEMENTS
ALTERNATIVE #2

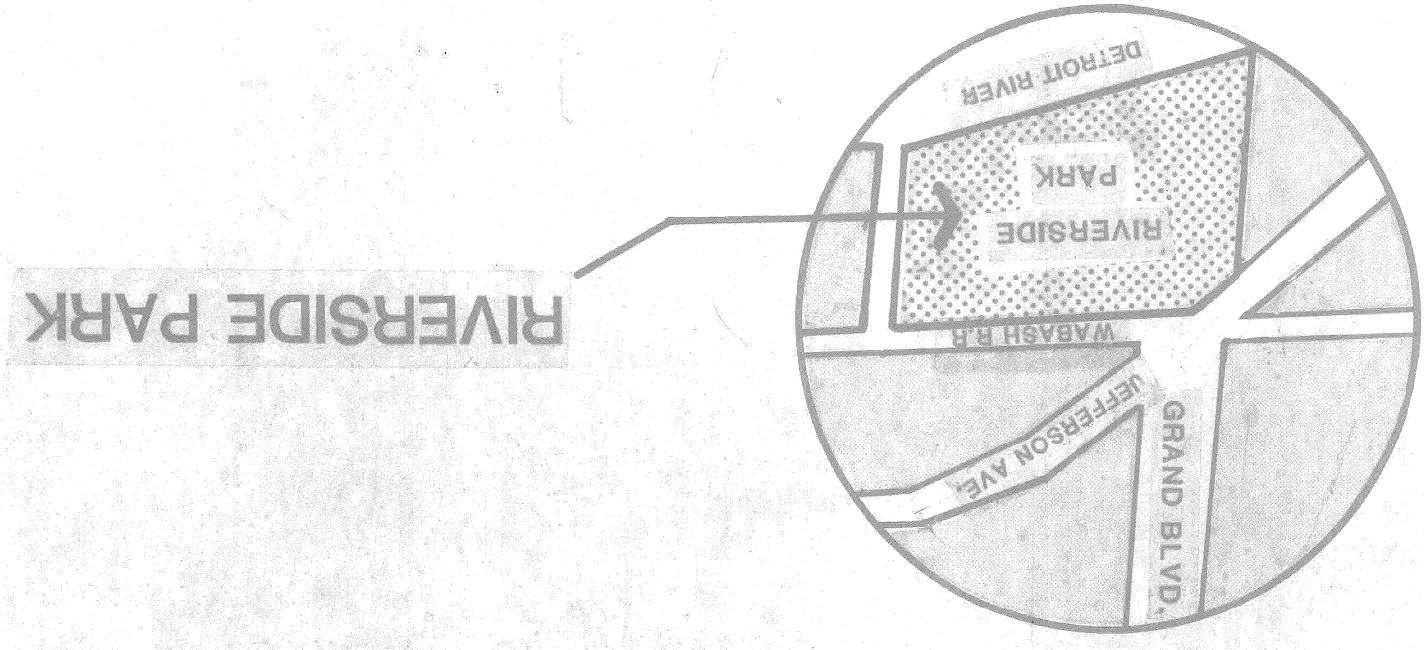
4 — PROMENADE / SEAWALL
SURVEY WEST END

5 — PROMENADE / SEAWALL
SURVEY EAST END

6 — SEAWALL DETAILS
ALTERNATIVES #1 & #2



LOCATION MAP



RIVERSIDE PARK

THIS DESIGN DEVELOPMENT PACKAGE WAS PREPARED IN COOPERATION WITH THE MICHIGAN DEPARTMENT OF NATURAL RESOURCES COASTAL ZONE MANAGEMENT PROGRAM

NOTES:
1. LOCATIONS OF EXISTING UTILITY LINES
AND BASED UPON THE BEST
AVAILABLE INFORMATION & RECORDS
AND ARE NOT GUARANTEED FOR
ACCURACY. CALL MISS DIG TO
VERIFY UTILITY INFORMATION AT
(313) 424-7111. 48 HOURS PRIOR
TO CONSTRUCTION OPERATIONS.
2. ALL CONTRACTORS WHO WISH TO
SUBMIT A BID FOR PROPOSED WORK
SHALL BE CAREY RESPONSIBLE
FOR AN ON-SITE EXAMINATION
PRIOR TO SUBMITTING THE BID.
3. ALL EXISTING LANDSCAPING & SITE
AMENITIES SHALL REMAIN UNLESS
NOTED HEREIN OR DIRECTED BY
THE CITY CONTRACTOR. SHALL
PROVIDE PROTECTIVE PROTECTION
FOR THOSE ITEMS SCHEDULED TO
REMAIN. CONTRACTOR SHALL
REMAIN RESPONSIBLE FOR ALL
REPAIRS TO ALL UTILITIES AT
HIS EXPENSE.

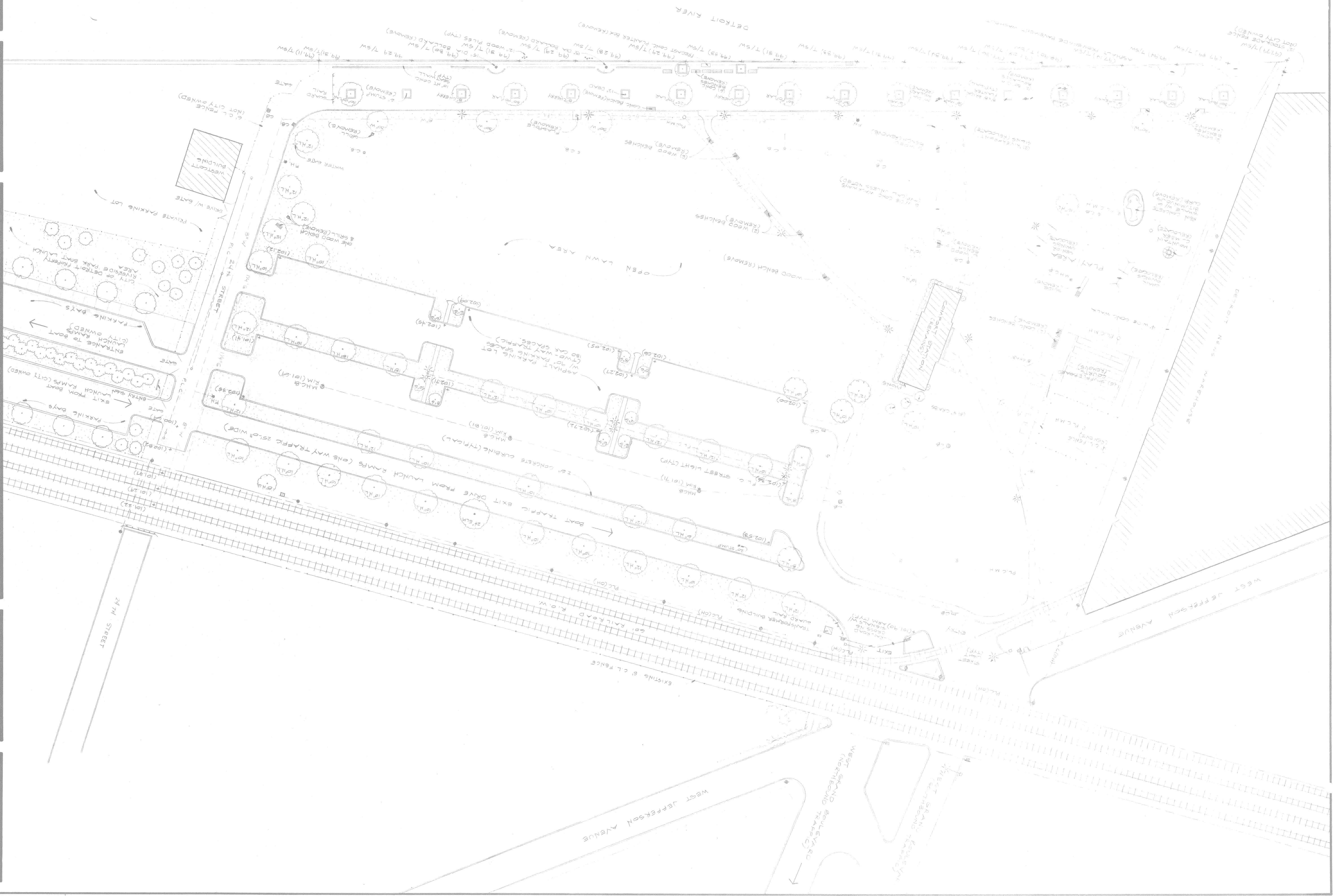
LEGEND
SYMBOL DESCRIPTION
● EXISTING TREE OR SHRUB
○ EXISTING DECIDUOUS SHADE
□ ASPHALT AREAS
▨ LAWN AREAS
PH FIRE HYDRANT EXISTING
○ GAS LINE (MICHIGAN
CONSOLIDATED GAS CO.)
S SEWER PIPE (WATER & SEWERAGE
DEPARTMENT)
W WATER SERVICE LINE (WATER &
SEWERAGE DEPT.)
P-COH WOOD POLES WITH OVERHEAD
LINES
---H-C SINGLE DUCT STREET UNDERGROUND
FEED LIGHTING (PUBLIC LIGHTING
DEPARTMENT).

PREPARED BY:
LANDSCAPE DESIGN UNIT
DATE: 10-88
DRAWN: N.R.V.
CHECKED: JAV
APPROVED: D. HADYVAL
11-88
11-88

REVISIONS:

SHEET TITLE: **RIVERSIDE PARK**
IMPROVEMENTS
EXISTING CONDITIONS

SHEET NUMBER: **1 of 6**
PROPERTY NUMBER: **151**
SCALE: 1" = 40'-0"



PREPARED BY: LANDSCAPE DESIGN UNIT
 CHECKED: GAV. 11-88
 APPROVED: D. HAYTAN 11-88
 DATE: 11-88
 DRAWN: N.K.V.

LEGEND

SYMBOL	DESCRIPTION
(Circle with cross)	EXISTING PLANT MATERIAL
(Circle with dot)	PROPOSED PLANT MATERIAL
(Square with cross)	1/2 BUILTUP PICNIC TABLE ANCHORED IN PLACE
(Square with dot)	PROPOSED STREET LIGHT
(Star)	EXISTING STREET LIGHT
(Star with dot)	PROPOSED PEDESTRIAN LIGHT
(Star with cross)	SIDEWALK
(Square with dot)	PROPOSED CONC. PICNIC TABLES ON CONC. PAD
(Square with cross)	CHAIR SWING ON CONC. PAD
(Square with dot)	METAL BENCHES (EXIST.)
(Square with cross)	FIRE HYDRANT (EXIST.)
(Square with dot)	FIRE HYDRANT (PROPOSED)

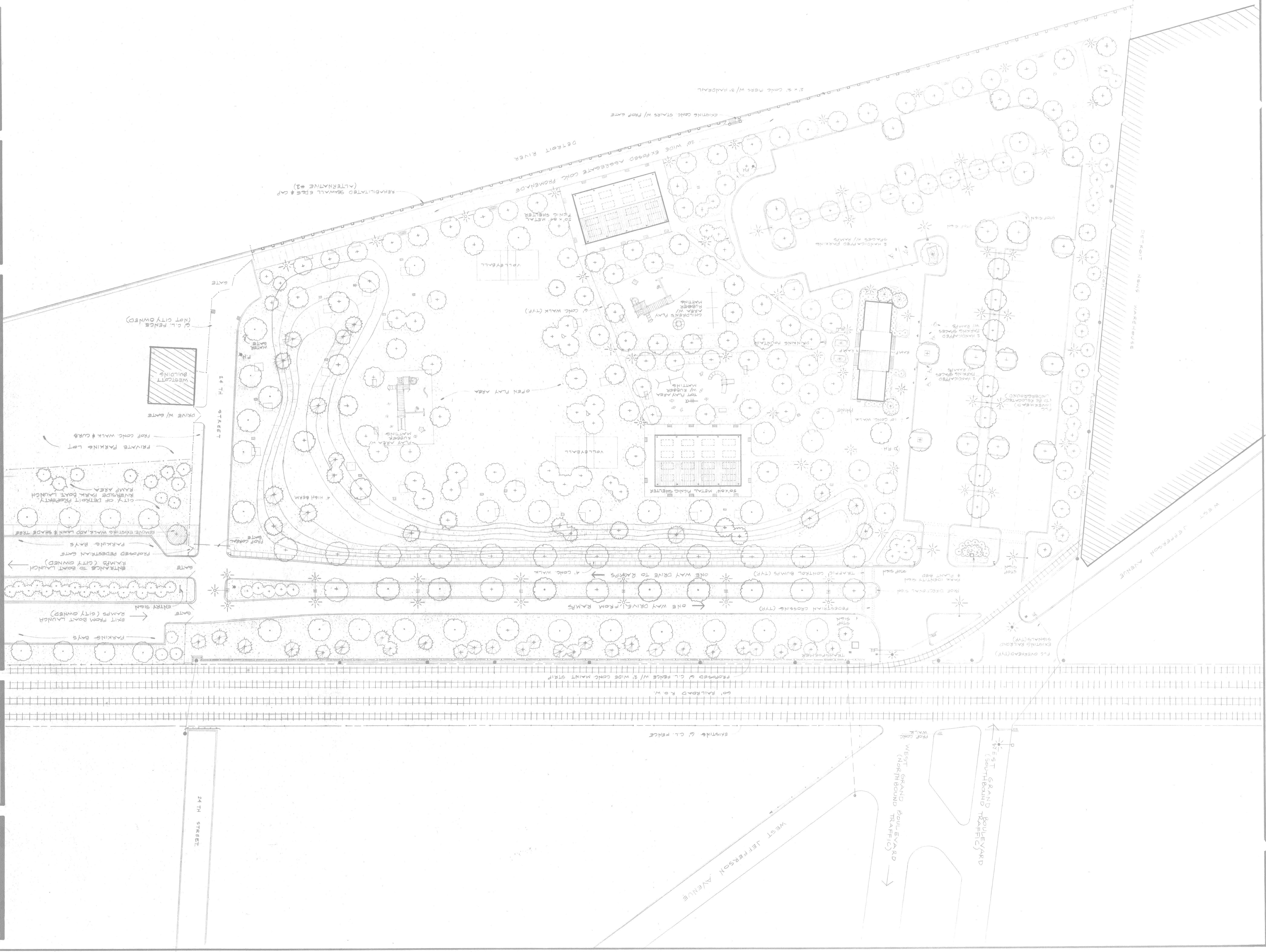
NOTES:

- TOTAL NUMBER PARKING SPACES EQUALS 52
- TOTAL NUMBER HANDICAPPED PARKING SPACES EQUALS 2
- ALL PROPOSED DRIVEWAYS & PARKING AREAS SHALL BE BITUMINOUS WITH CONC. CURBS & CUTTERS

EXIT FROM BOAT LAUNCH
 EXIT RAMP (CITY OWNED)
 PARKING BAYS
 EXIT SIGN
 EXIT FROM BOAT LAUNCH
 RAMP (CITY OWNED)
 PROPOSED PEDESTRIAN GATE
 PARKING BAYS
 REMOVE EXISTING WALK, ADD LAWN & SHADE TREE
 CITY OF DETROIT PROPERTY RIVERSIDE PARK BOAT LAUNCH
 PRIVATE PARKING LOT
 PROPOSED CONC. WALK & CURB
 DRIVE W/ GATE
 WESTCOTT BUILDING (NOT CITY OWNED)
 24 TH STREET
 GATE
 24 TH STREET
 GATE
 DRIVE W/ GATE
 WESTCOTT BUILDING (NOT CITY OWNED)

PROJECT:
RIVERSIDE PARK IMPROVEMENTS

CITY OF DETROIT
 RECREATION DEPARTMENT
 735 RANDOLPH
 ROOM 200
 WATER BOARD BUILDING
 DETROIT MICHIGAN 48226
 (313) 224-1906



PROMENADE/SEAWALL
 EXISTING CONDITION SURVEY

DETROIT RECREATION DEPARTMENT
 DETROIT, MICHIGAN

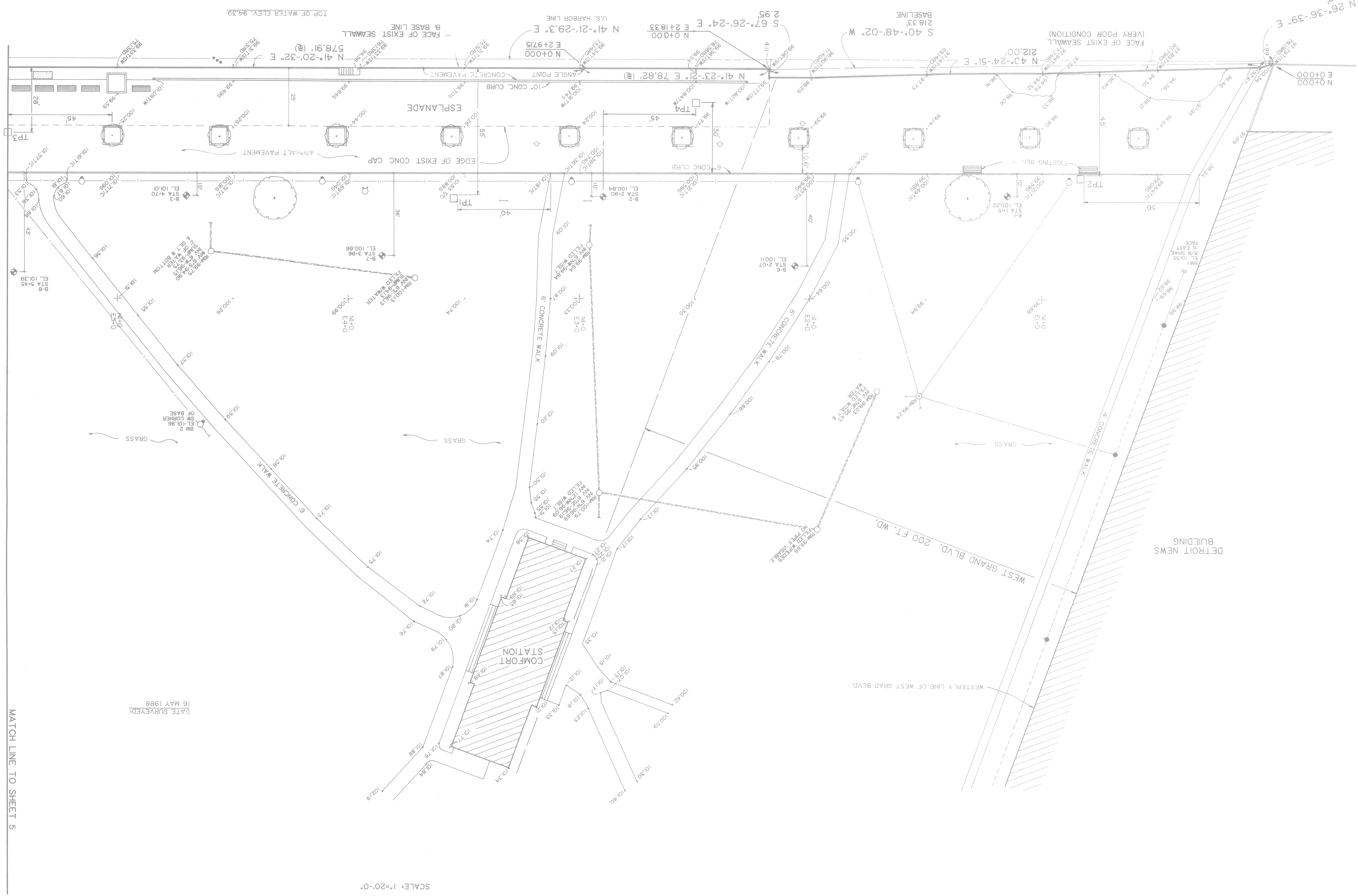
DATE SURVEYED: 16 MAY 1988

Charles S. Davis
 and associates, Inc.
 consulting engineers

220 State Avenue, Suite 700
 Detroit, Michigan 48226
 (313) 963-7985

RAMA BAO & ALBERD, INC.
 Consulting Engineers
 Detroit, Michigan 48207

NO.	DESCRIPTION	DATE	BY

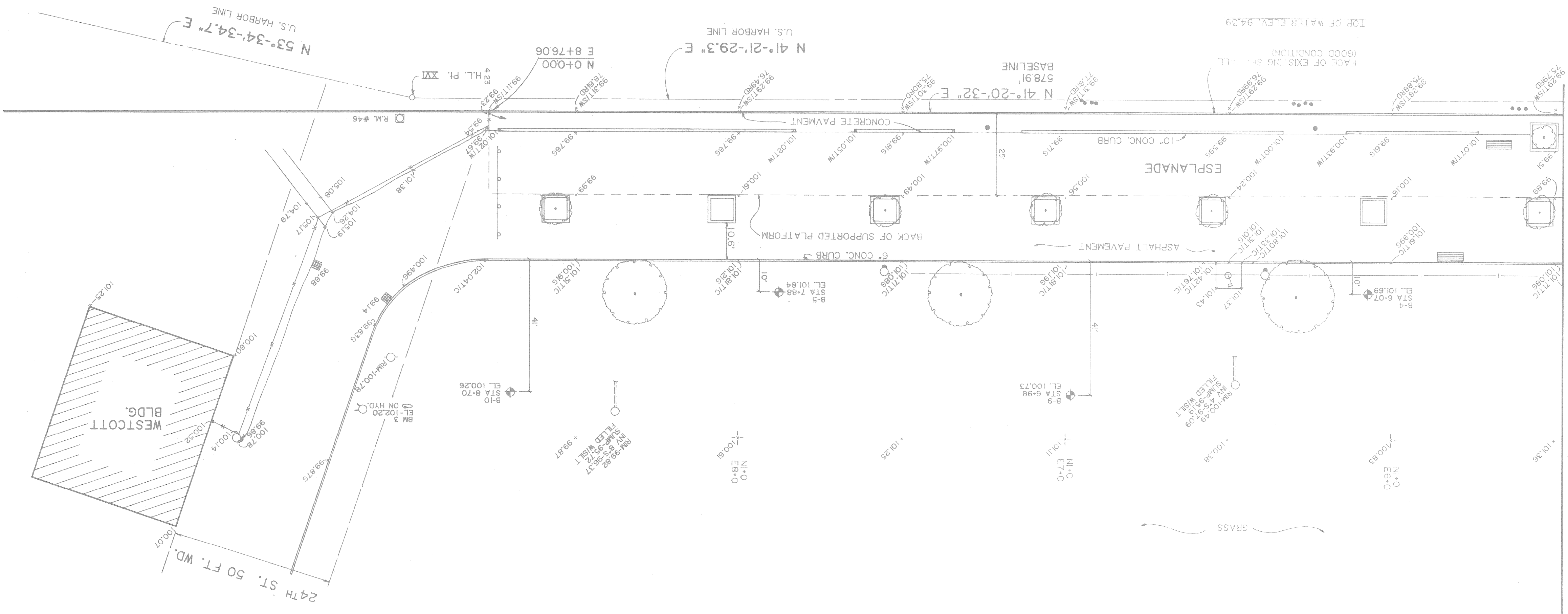


MATCH LINE TO SHEET 5

BENCH MARKS
 BM 1 ELEV. 101.33
 R/R SPIKE EAST FACE
 OF GUY POLE.
 BM 2 ELEV. 101.96
 SW CORNER OF P.L.C.
 LIGHT POLE BASE.

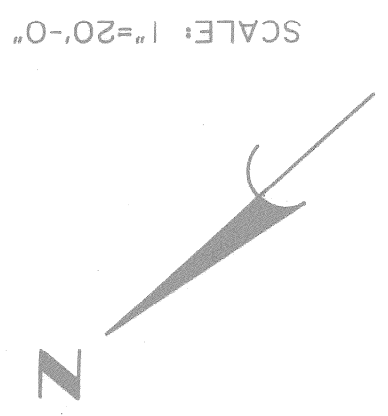
NOTE: ALL ELEVATIONS SHOWN ARE BASED ON CITY OF DETROIT DATUM.

MATCH LINE TO SHEET 4



LEGEND:

BM	BENCHMARK	○	TOP OF CURB
T/C	TOP OF CURB	○	P.L.C. LIGHT POLE
G	GROUND	○	CAP STAND
T/W	TOP OF WALL	■	CATCH BASIN
T/SW	TOP OF SEAWALL	●	12" WOOD PILE
RD	RIVER DEPTH	□	8"×8" BRICK TREE PLANTER
---	EXISTING PUBLIC SEWER	—	SIGN
---	EXISTING P.L.C. CONDUIT	—	GUY POLE
---	FENCE	—	FLAG POLE
○	SEWER MANHOLE	—	EXISTING P.L.C. CONDUIT
⊙	P.L.C. MANHOLE	◆	SOIL BORING LOCATION
○	WATER GATE	□	REFERENCE MONUMENT
---	ELECTRIC	●	POWER POLE



SCALE: 1"=20'-0"

BENCH MARKS
 BM 3 ELEV. 102.20
 ARROW ON HYD.

NOTE: ALL ELEVATIONS SHOWN ARE BASED ON CITY OF DETROIT DATUM.

UNIT :	DATE :
BY :	
DRAWN : SHB	
CH K'D :	
11-30-08	
SHEET 5 OF 6	

PROMENADE/SEAWALL
EXISTING CONDITION SURVEY

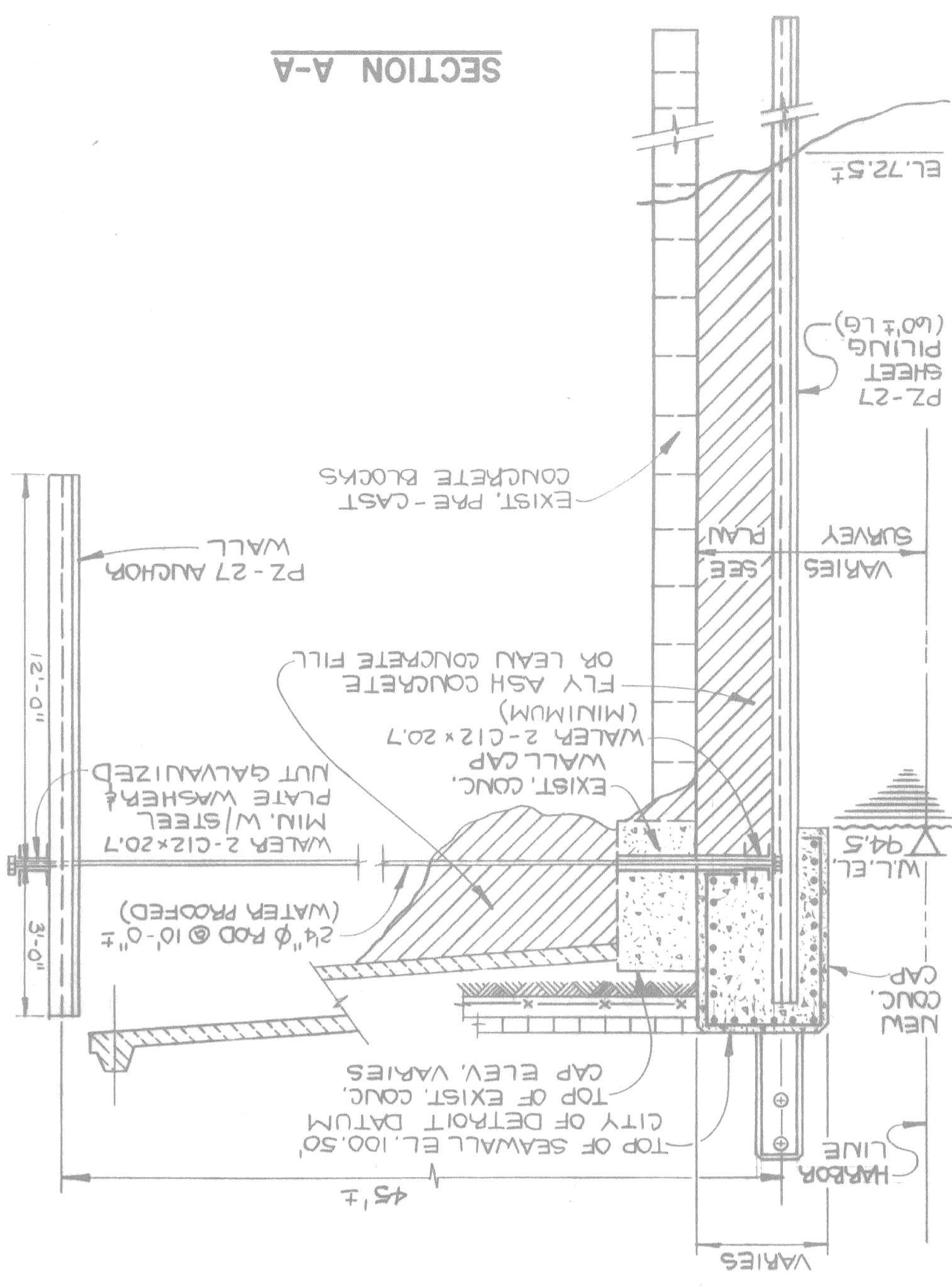
DETROIT RECREATION DEPARTMENT
DETROIT, MICHIGAN

220 Stuyvesant Avenue, Suite 700
 Detroit, Michigan 48226
 (313) 963-7100

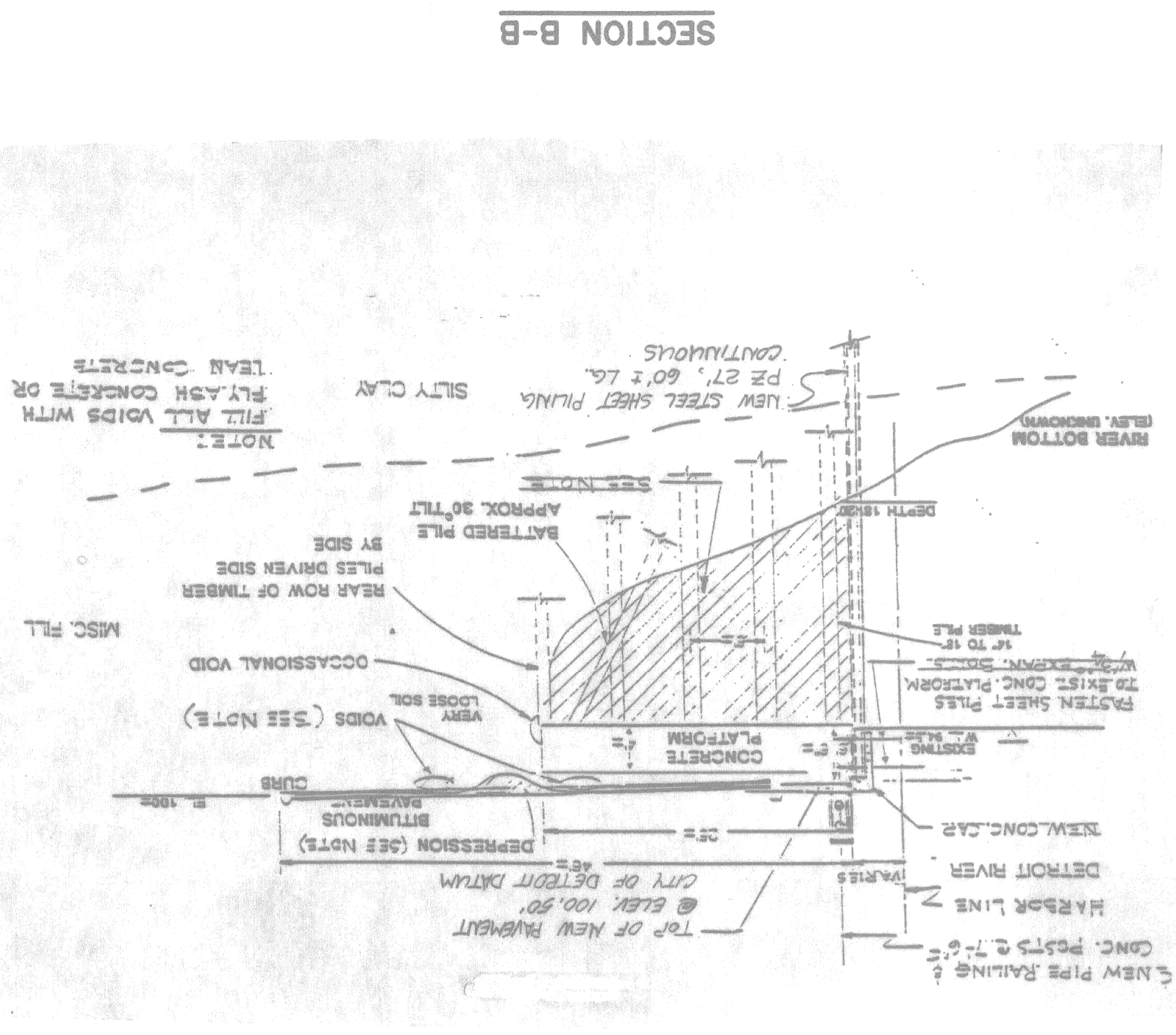
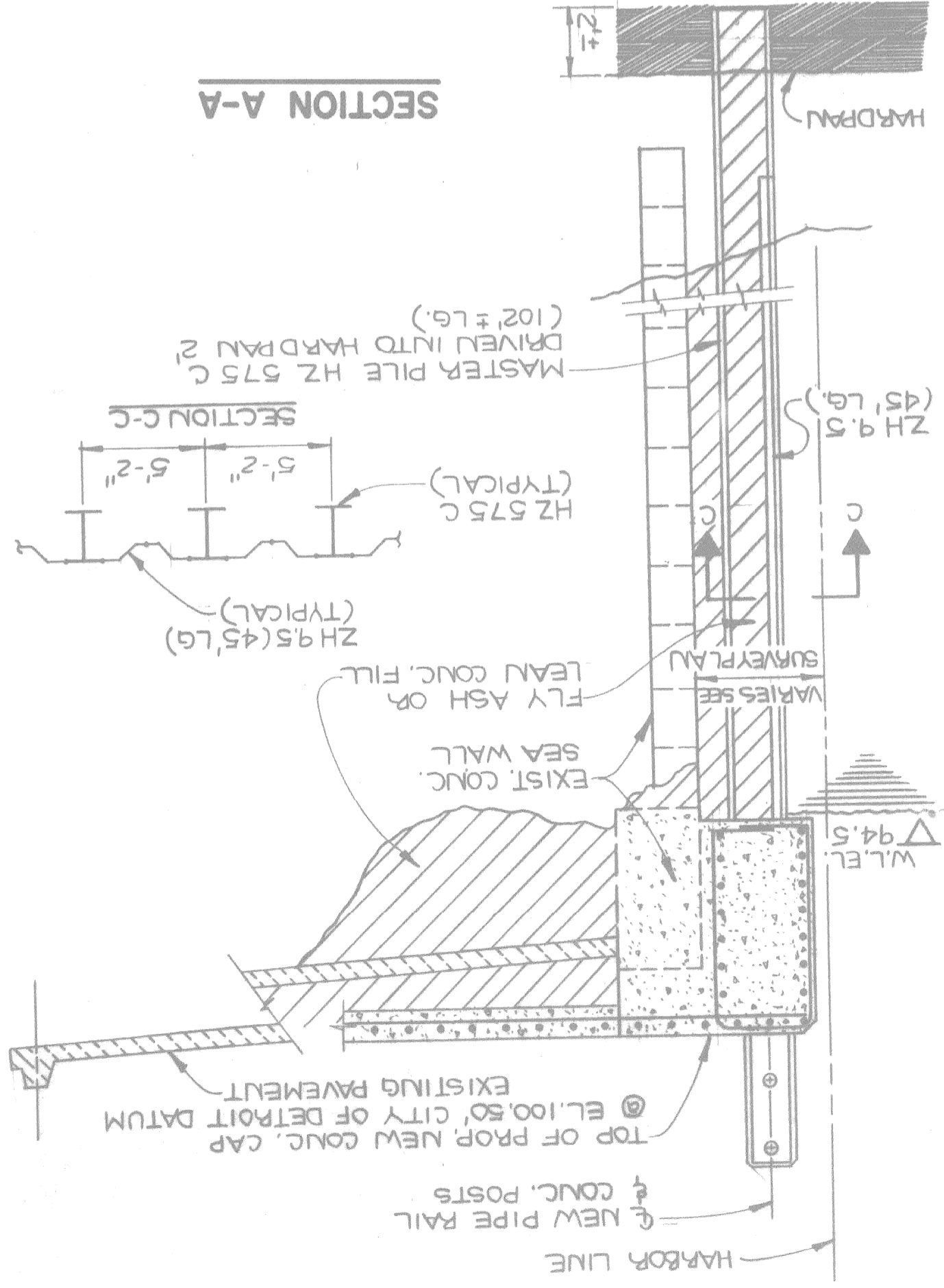
Charles S. Oatis and associates, Inc.
 consulting engineers

RAMA RAO & ALFRED, INC.
 consulting engineers
 Detroit, Michigan 48219

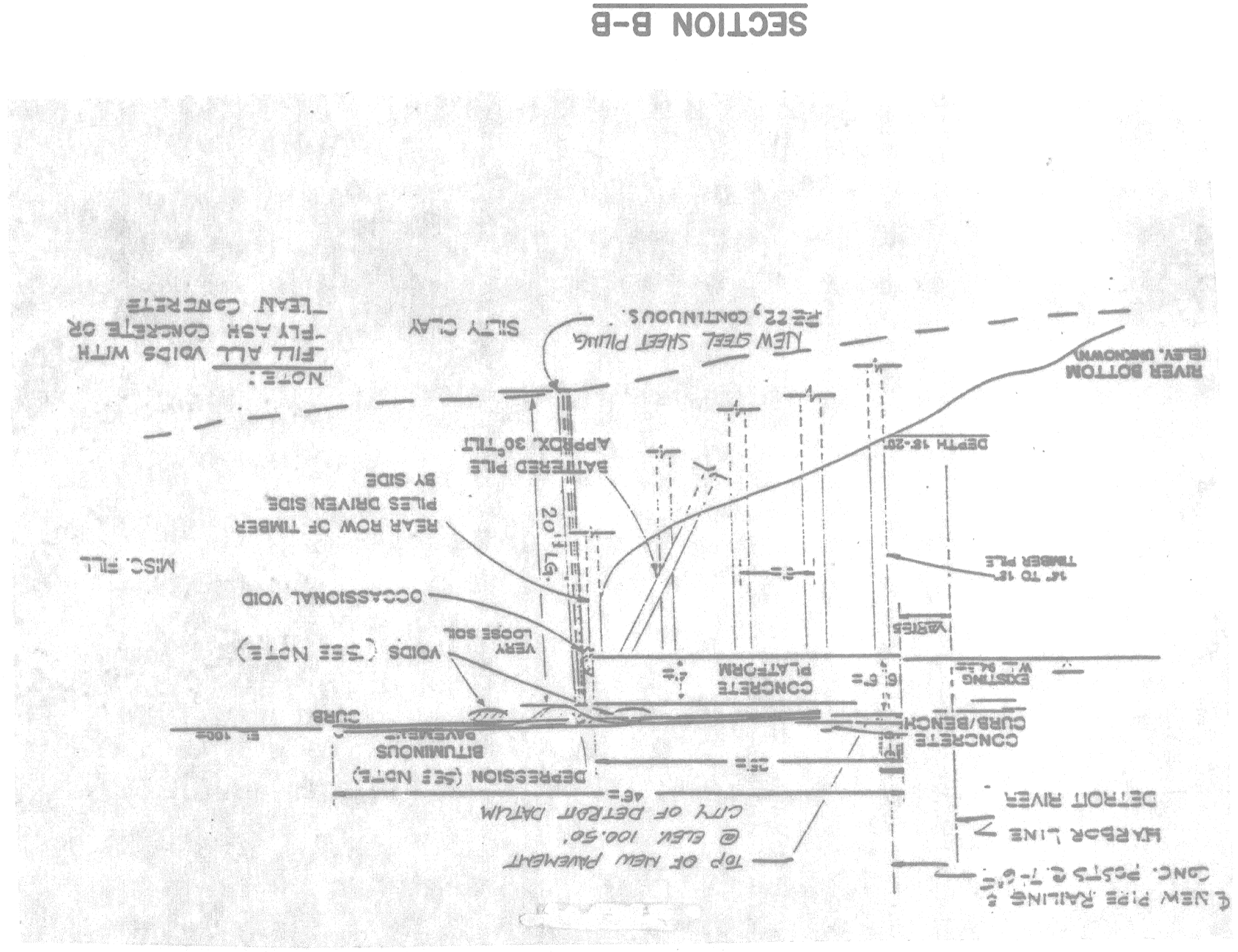
NO.	DESCRIPTION	DATE	BY



SECTION A-A



SECTION B-B



SECTION B-B

PROP SEAWALL TREATMENT
 ALTERNATIVES 1 & 2

DETROIT RECREATION DEPARTMENT
 DETROIT, MICHIGAN

2200 Spring Avenue, Suite 700
 Detroit, Michigan 48226
 (313) 963-7500
RAMA RAO & ALPRED, INC.
 consulting engineers
 Detroit, Michigan 48210

Charles S. Davis
 and associates, Inc.
 consulting engineers

NO.	DESCRIPTION	DATE	BY