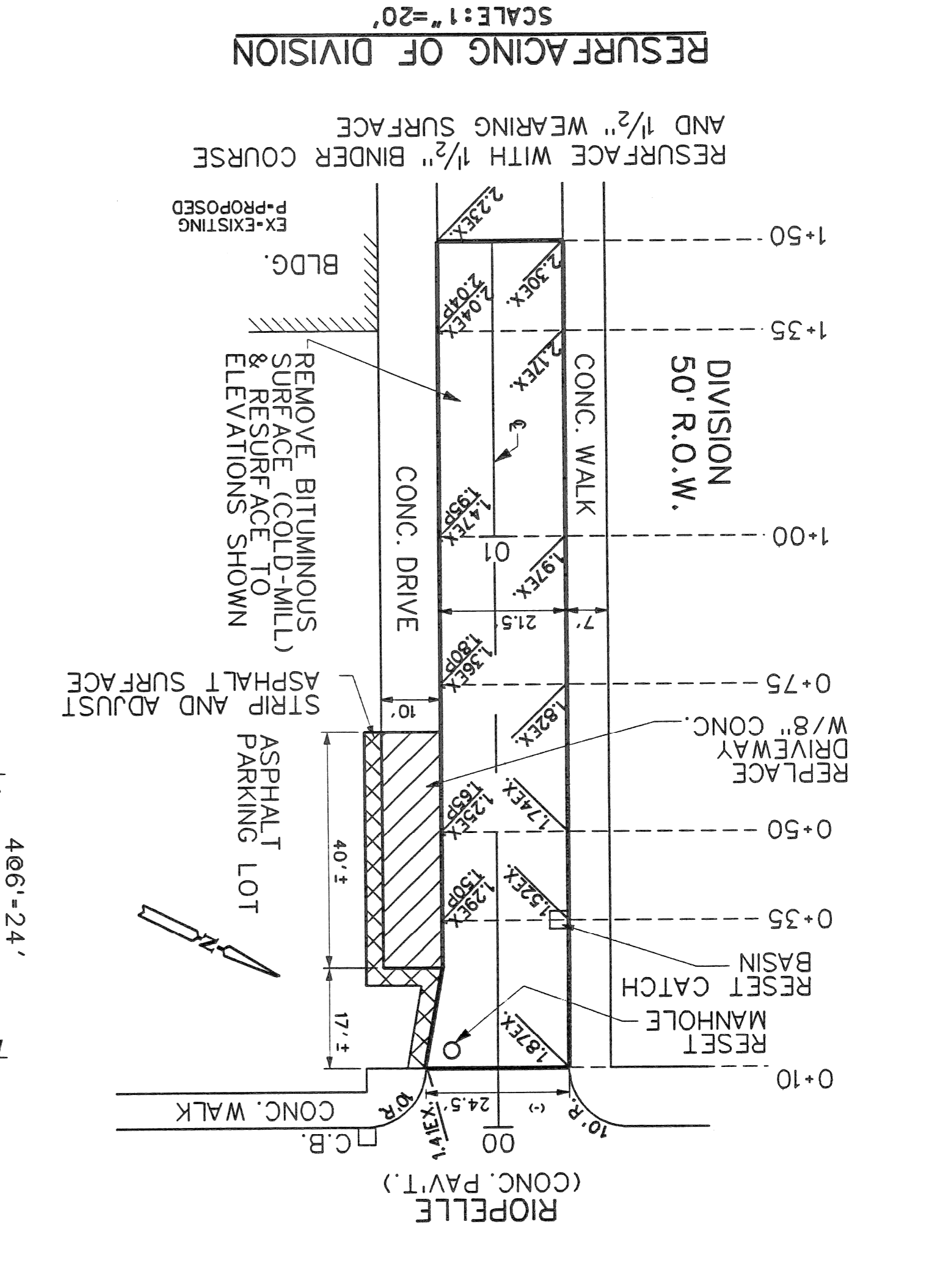
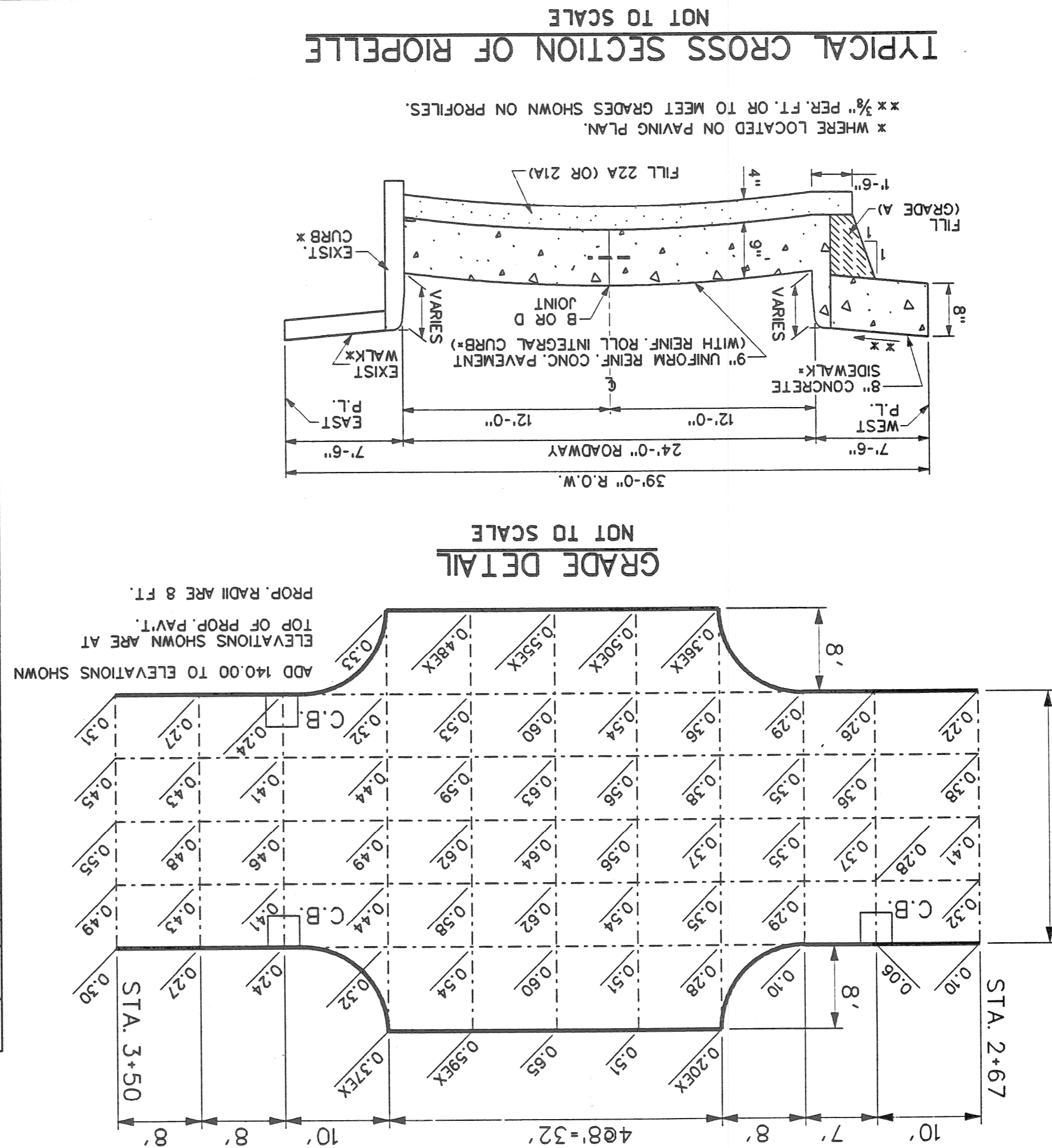
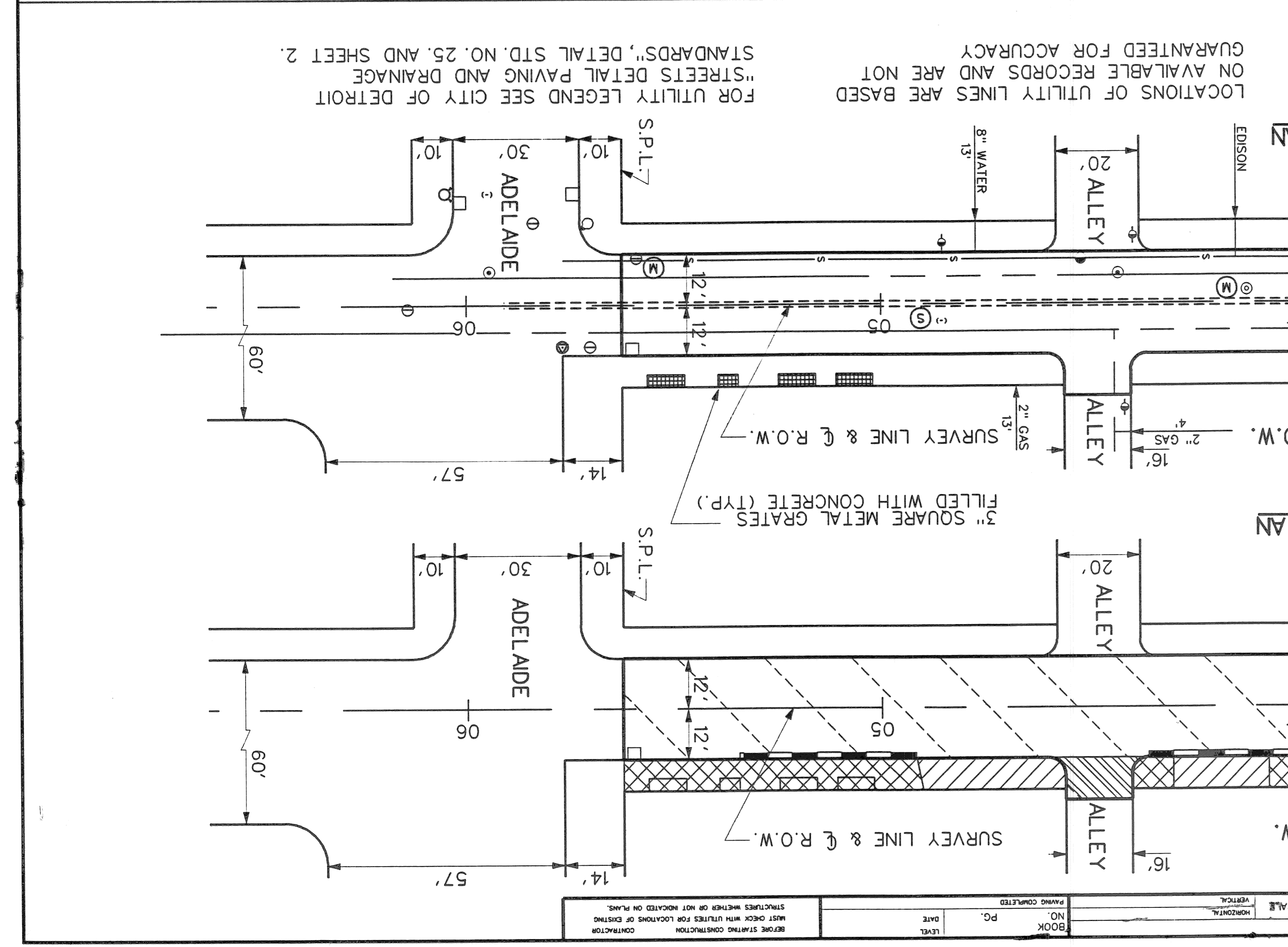
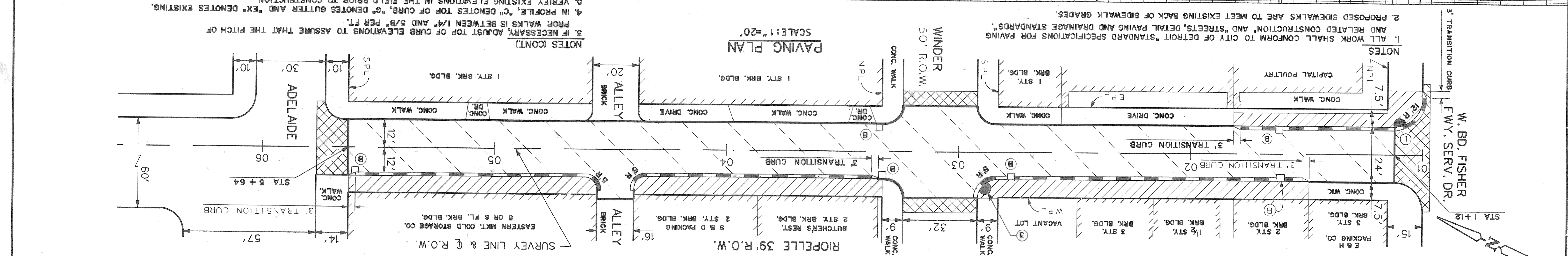
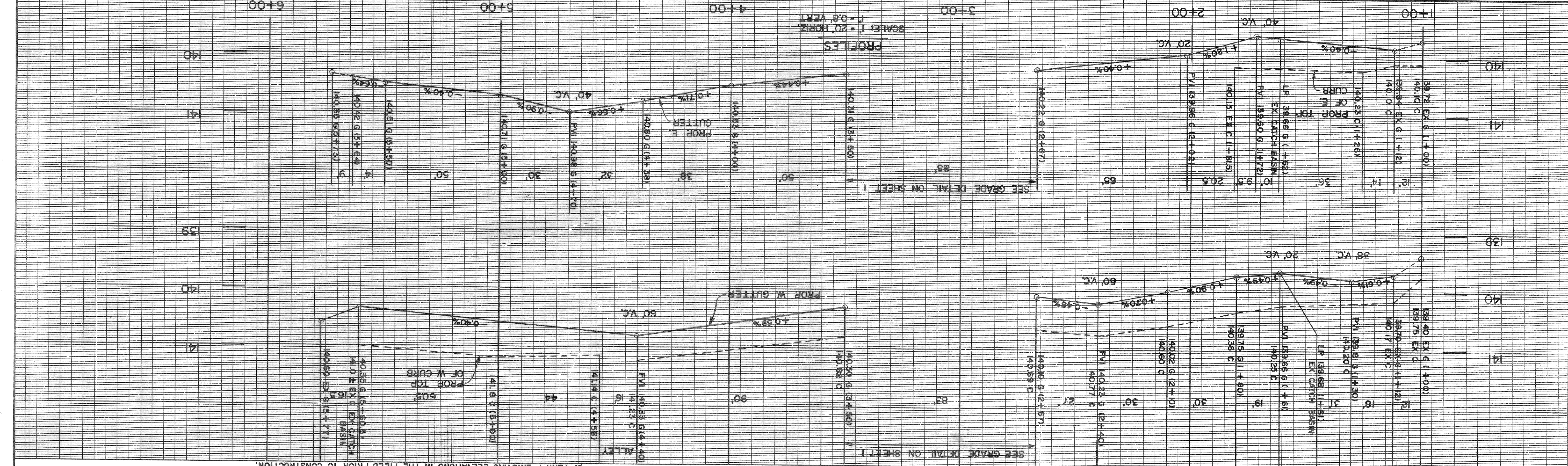


NO.	ITEM	UNIT	SHT. NO. 1	SHT. NO. 2	TOTAL
1.	EXCAVATION	CYD	440		440
2.	SIDEWALK REMOVAL	SFT	2,750		2,750
3.	DRIVEWAY REMOVAL	SFT	660		660
4.	ALLEY REMOVAL	SYD	23		23
5.	STREET PAVEMENT REMOVAL	SYD	1,300		1,300
6.	SEPARATE TYPE CURB REMOVAL	LFT	270		270
7.	REMOVING BITUMINOUS SURFACE	SYD	240		240
8.	FILL (GRADE A)	CYD	50		50
9.	FILL 22A (OR 21A)	CYD	150		150
10.	SIDEWALK 8" CONCRETE	SFT	3,550		3,550
11.	8" DRIVEWAY REPLACEMENT	SFT	400		400
12.	PAVEMENT 9" UNIFORM REINFORCED CONCRETE (WITH REINFORCED INTEGRAL ROLL CURB)	SYD	1,323		1,323
13.	ADJUST CATCH BASIN	EACH	6		6
14.	RESETTING CATCH BASIN	EACH	1		1
15.	MANHOLE ADJUSTMENT	EACH	9		9
16.	RESET MANHOLE	EACH	1		1
17.	STOP BOX ADJUSTMENT	EACH	2		2
18.	CLEANING STRUCTURE	EACH	5		5
19.	STRIP AND ADJUST ASPHALT SURFACE	SYD	215		215
20.	BITUMINOUS BOND COAT	GAL.	36		36
21.	WEARING SURFACE MIXTURE 11001.20AA-1/2 INCH THICK	TON	20		20
22.	BINDER COURSE MIXTURE 11001.20AA-1/2 INCH THICK	TON	21		21
23.	MAINTAINING TRAFFIC	L. SUM			1





NOTES  
 1. ALL WORK SHALL CONFORM TO CITY OF DETROIT "STANDARD SPECIFICATIONS FOR PAVING AND RELATED CONSTRUCTION" AND "STREETS, DETAIL PAVING AND DRAINAGE STANDARDS".  
 2. PROPOSED SIDEWALKS ARE TO MEET EXISTING BACK OF SIDEWALK GRADES.  
 3. IF NECESSARY, ADJUST TOP OF CURB ELEVATIONS TO ASSURE THAT THE PITCH OF PROP. WALKS IS BETWEEN 1/4" AND 5/8" PER FT.  
 4. IN PROFILE, "C" DENOTES TOP OF CURB, "G" DENOTES GUTTER AND "EX" DENOTES EXISTING.  
 5. VERIFY EXISTING ELEVATIONS IN THE FIELD PRIOR TO CONSTRUCTION.

CONSTRUCTION LEGEND  
 SIDEWALK, 8" CONCRETE  
 PAVEMENT, 9" UNIFORM REINF.  
 CONCRETE WITH REINF. INTEGRAL ROLL CURB WHERE SHOWN  
 STRIP & ADJUST ASPHALT SURFACE  
 INTEGRAL TYPE CURB REMOVAL  
 ALLEY PAVEMENT REMOVAL  
 DRIVEWAY REMOVAL  
 SIDEWALK REMOVAL  
 SEPARATE TYPE CURB REMOVAL  
 PAVEMENT REMOVAL  
 STREET PAVEMENT REMOVAL  
 INTEGRAL TYPE CURB REMOVAL  
 ADJUST EXIST MANHOLE  
 ADJUST EXIST STOP BOX

UTILITIES LEGEND  
 3' TRANSITION CURB  
 1' TRANSITION CURB  
 2' TRANSITION CURB  
 3' TRANSITION CURB

DETAIL OF THICKENED EDGE  
 NOT TO SCALE  
 PROVIDE THIS THICKENED EDGE WHERE PROPOSED PAVEMENT MEETS EXIST. PAVEMENT

ELEMENTS OF A 24 FT. PAVEMENT  
 \* L = DISTANCE FROM FACE OF CURB (ON HIGH SIDE) TO CROWN

PAV'T. CURB HEIGHT	WIDTH	T	A	B	C	D	E	L*
0.0	24"	0.583	0.396	0.333	0.396	0.583	12.0	0.333
0.1	24"	0.583	0.421	0.383	0.471	0.683	10.8	0.380
0.2	24"	0.583	0.446	0.433	0.546	0.783	9.6	0.423
0.3	24"	0.583	0.471	0.483	0.621	0.873	8.4	0.461
0.4	24"	0.583	0.496	0.533	0.696	0.983	7.2	0.493
0.5	24"	0.583	0.521	0.583	0.771	1.083	6.0	0.521

CONCRETE REINFORCEMENT MARKS  
 BENCH  
 P.B.M. 39-283 CHESTNUT & N.S. ON E OF G.T.R.R. BRIDGE 138.82  
 C.B.M. HYD. AT E.H. PACKING ON RIOPELLE 143.12  
 C.B.M. HYD. N.W. COR. WINDER ON RIOPELLE 143.95  
 C.B.M. LG. R.R. SPIKE IN WOOD POLE N.W. COR. 142.07  
 C.B.M. LG. R.R. SPIKE IN WOOD POLE N.W. COR. 142.04  
 P.B.M. 39-251A S.W. COR. RIVARD & WILKINS 141.13