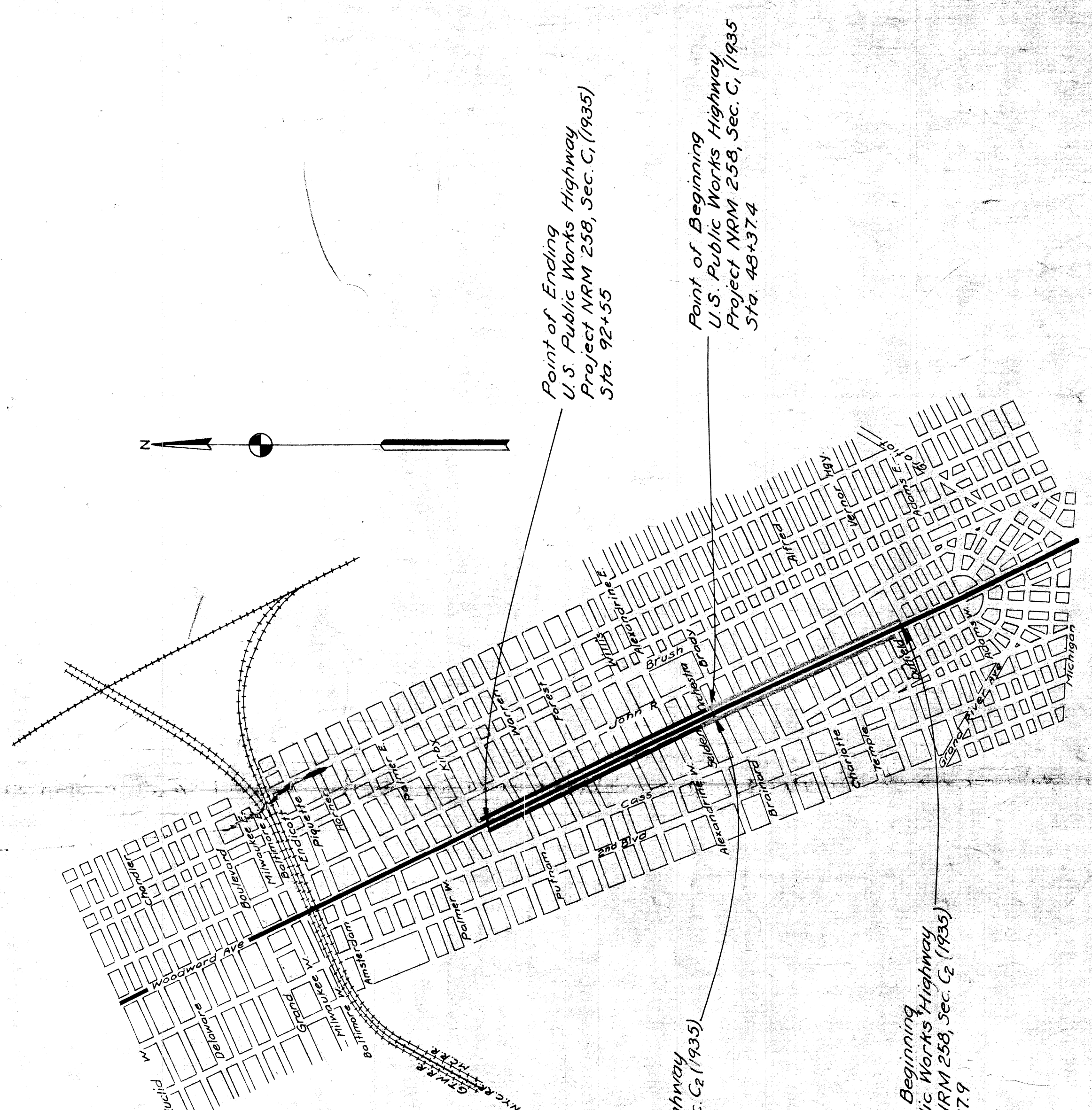


MICHIGAN
STATE HIGHWAY DEPARTMENT
MURRAY D. VAN WAGONER
COMMISSIONER

PLAN AND PROFILE OF PROPOSED
U.S. PUBLIC WORKS HIGHWAY PROJECT NO. NRM 258, SEC. C (1935)
DETROIT - PONTIAC ROAD
WAYNE COUNTY
CITY OF DETROIT

SCALES
TITLE SHEET.....IN=0.3 MI.
PLAN.....IN=40 FT.
PROFILE (HOR).....IN=40 FT.
 (VERT).....IN = 4 FT.

Note: The improvements covered by these plans shall be done in accordance with the Michigan State Highway Department 1934 Standard Specifications.



| INDEX OF SHEETS | |
|-----------------|------------------------|
| Sheet No. 1 | Title Sheet |
| " 2 | Typical Cross-Section |
| " 3 | Special Provisions |
| " 4 | Witnesses |
| " 5-8 | Plan-Profile |
| " 9-11 | Special Details |
| " 12-14 | Public-Utilities Plans |
| " 15-16 | Quantities |

| | |
|-------------|-----------------------|
| Sheet No. 1 | Title Sheet |
| " 2 | Typical Cross-section |
| " 3 | Special Provisions |
| " 4 | Plan & Profile |
| " 5-9 | Special Details |
| " 10-16 | Quantities |

STANDARD PLANS

| |
|-----------|
| E-4-A-9A |
| E-4-A-16 |
| E-4-A-18C |
| E-4-A-21B |
| E-4-A-91A |
| E-4-A-92A |
| E-7-C-11H |

Contract 5 For Base

Contract 6 For Surfacing

No Standards

PLAN & PROFILE LEGEND

- Sewer M.H.
- Sewer C.B.
- D.E.
- PL.C.
- C.G.
- W.U.
- Water Cap
- Mich Bell
- Postal Tel.
- Fire Dept.
- Water Gate M.H.
- Police Call
- Fire Call
- C.B. in D.S.R.
- Fire Plug
- Light Post
- D.S.R. Poles
- Mail Box
- Coal Chute
- D.E. Pole
- Signal Light
- Water Meter
- Gas Cap
- Gas Stop
- Gas Drip
- Proposed Storm Sewer M.H.
- Catch Basin
- Storm Sewer

TITLE SHEET LEGEND

- PROPOSED PROJECT
- T.L. OR P.A. PAVED
- T.L. OR P.A. IMPROVED NOT PAVED
- T.L. OR P.A. UNIMPROVED
- NON T.L. OR P.A. PAVED
- NON T.L. OR P.A. IMPROVED NOT PAVED
- NON T.L. OR P.A. UNIMPROVED
- COUNTY LINE
- CITY OR VILLAGE
- TOWNSHIP LINE
- SECTION LINE
- RAILROADS

| FISCAL YEAR | STATE | PROJ. NO. | TOTAL SHEETS |
|-------------|-------|--------------|--------------|
| 1935 | MICH. | 258-C (1935) | 1 |

| FISCAL YEAR | STATE | PROJ. NO. | TOTAL SHEETS |
|-------------|-------|--------------|--------------|
| 1935 | MICH. | 258-C (1935) | 1 |

CITY OF DETROIT
WOODWARD AVE
NRM 258 c4 Covers Conc. Base from Sta. 48+574 to 48+574
NRM 258 c5 Covers G. E. 0.5 bond Conc. Base from Sta. 11+279 to 48+374
NRM 258 c6 Covers Bricks & Sheet Asphalt Surfacing from Sta. 11+279 to Sta. 92+55

CONTRACT FOR GRADING - DRAINAGE - SURFACING
NRM 258, SEC. C

CHECKED: *Geo. W. Zimman*
CORRECT: *Geo. W. Zimman*
RECOMMENDED FOR APPROVAL: *Geo. W. Zimman*
APPROVED: *Murray D. Van Wagoner*

ENGINEER: *Geo. W. Zimman*
MUNICIPAL ENGINEER: *Geo. W. Zimman*
ENGINEER OF PLANS: *Geo. W. Zimman*
ENGINEER OF ROAD DESIGN: *Geo. W. Zimman*
ROAD ENGINEER: *Geo. W. Zimman*

DATE: 11-16-34

BY: *Murray D. Van Wagoner*
STATE HIGHWAY COMMISSIONER
DATE: 11-20-34

RECOMMENDED FOR APPROVAL: *Murray D. Van Wagoner*
DISTRICT ENGINEER
DATE: 11-20-34

RECOMMENDED FOR APPROVAL: *Murray D. Van Wagoner*
CHIEF ENGINEER
DATE: 11-20-34

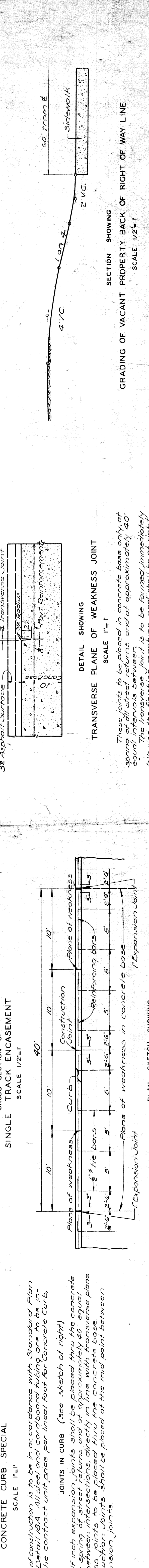
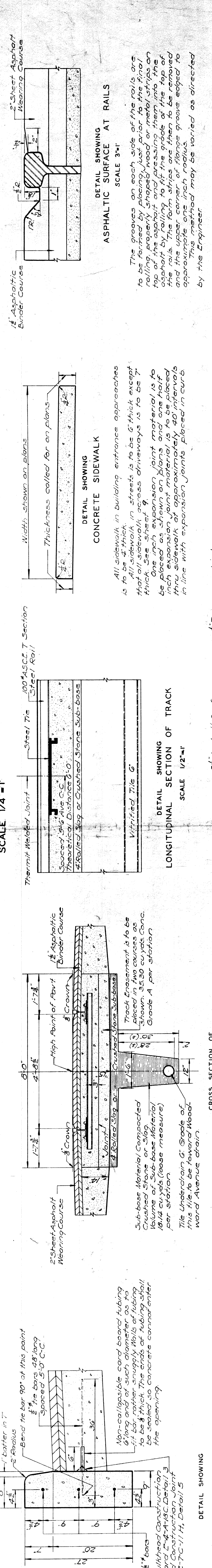
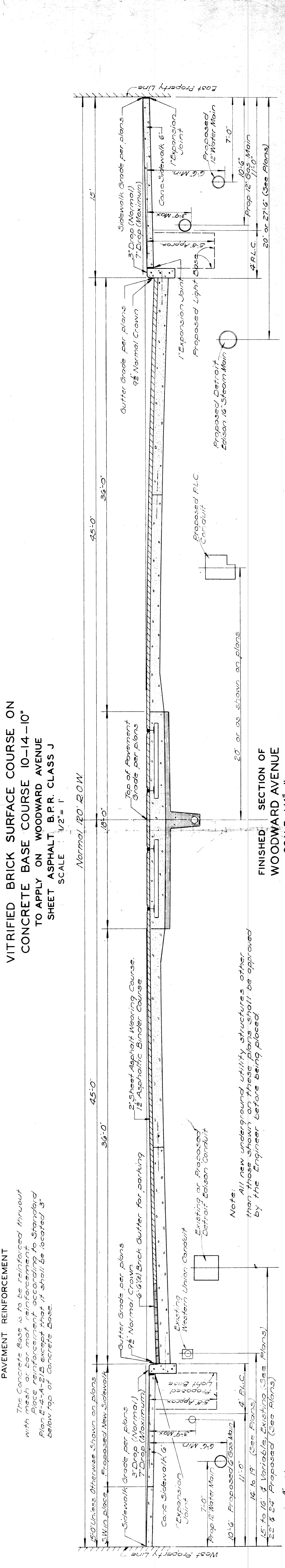
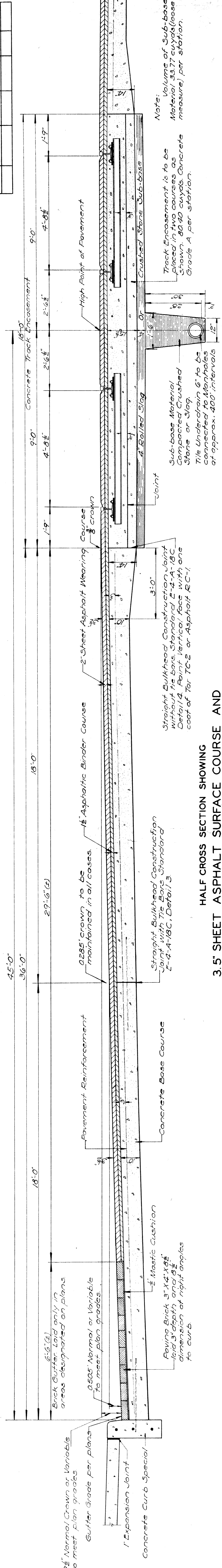
APPROVED: *Murray D. Van Wagoner*
CHIEF

WOODWARD
115-10
Vernor Hwy - Orchestra P.

FILE NO. PROJECT SEC. SHEET NO. SHEET
R-21-B-IB BE-35 C2

TYPICAL CROSS-SECTIONS

| | | | | |
|---------------------|---------|--------------------|-------------|--------------|
| FED. PROJ. NO. | STATE | YEAR | SHEET NO. | TOTAL SHEETS |
| 7 | MICH. | 1935 | 2 | 2 |
| ROUTE | STATE | COUNTY | CITY | TOWNSHIP |
| 2310 | MI | WAYNE | DETROIT | |
| FED. ROAD DIST. NO. | STATE | FED. AID PROJ. NO. | FISCAL YEAR | SHEET NO. |
| | MI | | | 2 |
| ROUTE | PROJECT | COUNTY | TWP. | SHEET NO. |
| | | | | 2 |



9 1/2" Normal Crown or Variable to meet Plan Grades
Gutter Grade per plans
Expansion Joint
Concrete Curb Special
Paving Brick 3" x 4" x 8" laid 1/2 depth and at dimension of right angles to curb
5/8" Mastic Cushion
0.500" Normal or Variable to meet Plan Grades
Brick Gutter, laid only in areas designated on plans
18'-0"
36'-0"
45'-0"
18'-0"
29'-6" (S)
2'-6"
4'-8"
9'-0"
18'-0"
Concrete Track Encasement
High Point of Pavement
Crushed Stone Sub-base
Expansion Joint
Sub-base Material Compacted Crushed Stone or Slag
Tile Under-drain 6" to be connected to Manholes at approx. 400' intervals
Straight Bulkhead Construction Joint without the bars Standard E-4-A-18C Detail 14. Point Vertical Face with one coat of Ter TC-2 or Asphalt RC-1
2 Sheet Asphalt Wearing Course
1 1/2 Asphalt Binder Course
3 1/2 Asphalt Binder Course
Vitrified Tile 6"
Thermit Welded Joint
Steel Tie
100% A.S.C.C. T Section Street Rail
Theoretical Distance 8'-0"
4 Rolled Slag or Crushed Stone Sub-base
20' or as shown on plans
Proposed P.L.C. Conduit
Proposed 16" Steam Main
Expansion Joint
Proposed Light Pipe
5/8" Max
3/8" Max
1 Expansion Joint
Proposed 12" Gas Main
10'-6"
20' or 27'-6" (See Plans)
4 R.L.C.
18" Asphaltic Binder Course
2 Sheet Asphalt Wearing Course
DETAIL SHOWING ASPHALTIC SURFACE AT RAILS SCALE 3/4" = 1'
The grooves on each side of the rails are to be formed by placing, just prior to the final rolling, properly shaped wood or metal strips on top of the asphalt and pressing them into the material. The strips shall be placed at the top of the rails, for the full width of the rails, and the upper corner of the grooves edged to approximate one inch radius. This method may be varied as directed by the Engineer.

Notes:
All sidewalk in building entrance approaches is to be 4" thick.
All sidewalk in streets is to be 6" thick except that all sidewalk across driveways is to be 7" thick. See sheet A-18 for joint material to be placed as shown on plans and one half inch expansion joint material is to be placed thru sidewalk at approximately 40' intervals in line with expansion joints placed in curb.

Notes:
These joints to be placed in concrete base only, of spring at all street returns and of approximately 40' equal intervals between the finishing machine and shall be at right angles to the center line of the street. After the concrete has hardened sufficiently the form is to be removed and the edges are to be rounded to a 1/8" radius. No filler is to be placed in this joint.

Notes:
One half inch expansion joints shall be placed thru the concrete curb walls between intersections, directly in line with transverse plane of weakness joints to be placed thru the concrete base. Construction joints shall be placed of the mid point between these expansion joints.

Method of construction is to be in accordance with Standard Plan E-4-A-16 Detail 16A. All steel and reinforcing bars shall be placed in the concrete base of the concrete curb.

SUPPLEMENTAL SPECIFICATIONS

DETROIT STREET RAILWAY COMMISSION

TRACK REMOVAL. The Detroit Street Railway Commission shall remove its rails and...

CONSTRUCTION. The D.S.R. Commission will furnish and install all the new ties...

COOPERATION. The work to be performed by the Detroit Street Railway Commission...

TEMPORARY TRACK. The Detroit Street Railway Commission shall make complete...

TREATMENT OF OTHER PUBLIC UTILITIES

With the exception of the Detroit Street Railway Commission, the various...

REMOVAL. All structures now in place which are to be abandoned, are to be re-

CONSTRUCTION. All new utility structures are to be furnished and installed by...

COOPERATION. Detail plans shall be submitted to the Engineer by each public...

OLD PAVEMENT AND CURB

The entire old pavement, curb and gutters in place are to be removed to the...

SIDEWALK

Woodward Avenue right of way lines all sidewalk is to be removed, except that...

SUPPLEMENTAL SPECIFICATIONS

CONSTRUCTION OF NEW SIDEWALK

New concrete sidewalk is to be placed between back of curb and new right of way lines...

CONNECTING SEWER TO RISER. Where plans call for sewer to be connected to risers...

POROUS BACKFILL. All trenches excavated deeper than one foot below the subsurface...

DISPOSING OF SURPLUS EXCAVATION. All surplus excavation shall be disposed of by...

RIGHT OF WAY

The City of Detroit shall be responsible for securing, moving, or altering...

COOPERATION OF PUBLIC UTILITIES

Detail plans shall be submitted to the Engineer by the various public...

MAINTAINING TRAFFIC

Traffic on the Detroit-Street Railway Lines shall be maintained at all...

SUPPLEMENTAL SPECIFICATIONS

TEMPORARY PAVEMENT CONNECTION

Between Veror Highway and Duffield Street where only the east portion...

RECONSTRUCTING MANHOLES AND CATCH BASINS

Where called for on plans, existing manholes and catch basins shall be...

MANHOLES AND CATCH BASINS

All manholes and catch basins called for on plans are to be constructed...

GRADES FOR INTERSECTIONS

All intersections are to be considered as complete units and the grades...

TILTING OF PAVEMENT

Where plan gutter grades show the proposed left and right gutters to be...

PUBLIC UTILITIES

The following public utilities are represented on this project: Detroit Edison Co., Detroit Public Lighting Commission, Detroit City Gas Co., Michigan Bell Telephone Co., Detroit Department of Water Supply, Detroit Fire Department (Signal Dept.), Detroit Police Department, Detroit Street Railway Commission, United States Postal Department.

Table with columns: SHEET NO., TOTAL SHEETS, STATE, COUNTY, PROJECT, COUNTY, PROJECT, COUNTY, PROJECT.

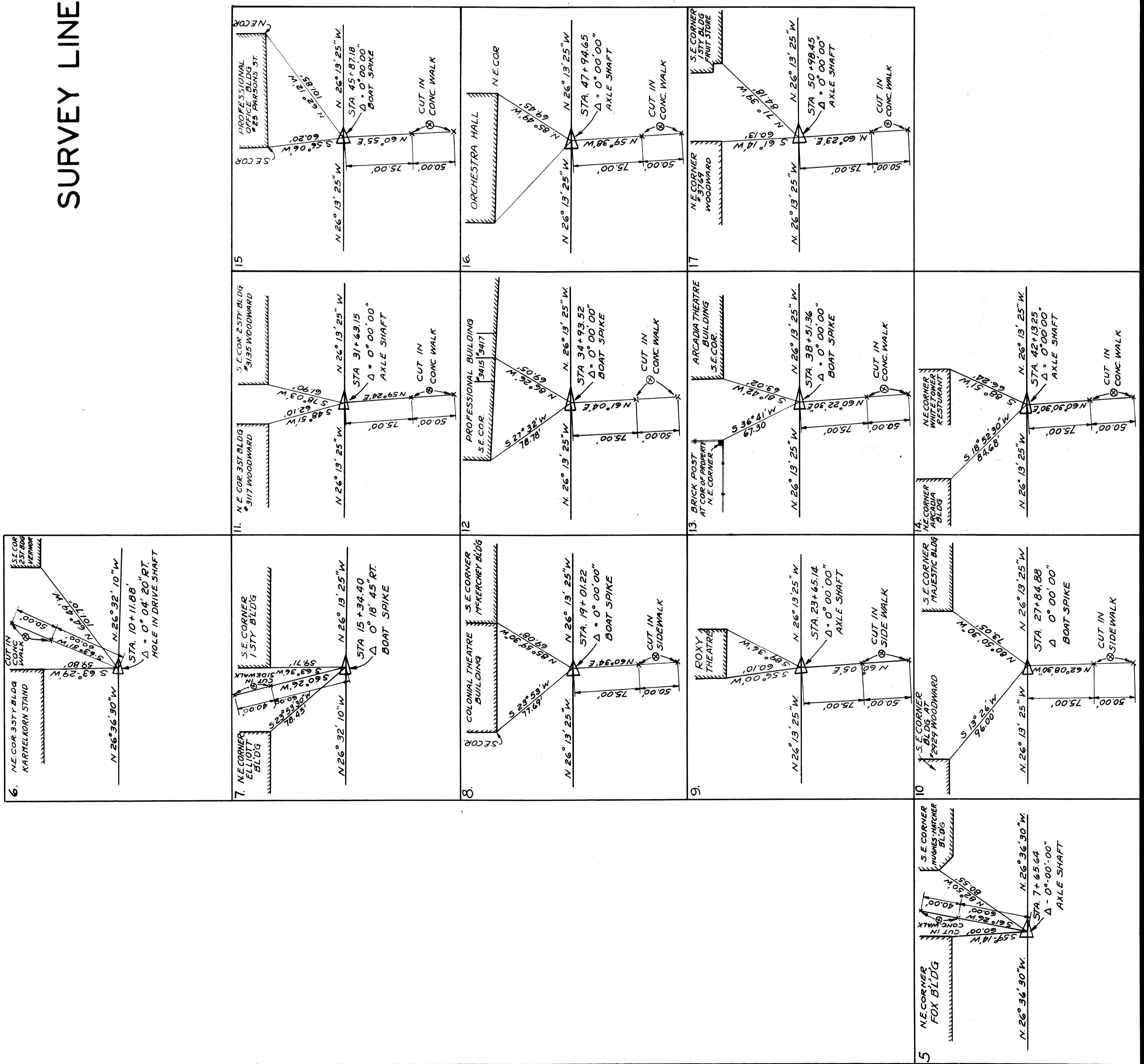
SUMMARY OF QUANTITIES

LENGTH 0.703 MILES

Table with columns: QTY, UNIT, DESCRIPTION, QTY, UNIT, DESCRIPTION, QTY, UNIT, DESCRIPTION.

SURVEY LINE WITNESSES

| | | | | |
|---------------------|--------|----------------|-------------|--------------|
| FED. ROAD DIST. NO. | STATE | PROJ. NO. | FISCAL YEAR | TOTAL SHEETS |
| 7 | MICH. | 25B, C, (1993) | | 4 |
| ROUTE | COUNTY | CITY | SHEET NO. | TOTAL SHEETS |
| U.S. 10 | WAYNE | DETROIT | 4 | 4 |
| FED. ROAD DIST. NO. | STATE | PROJ. NO. | FISCAL YEAR | TOTAL SHEETS |
| | MICH. | | | |
| ROUTE | COUNTY | TWP. | SHEET NO. | TOTAL SHEETS |
| | | | | |



| | | | | | |
|---------------------|--------|-----------|-------------|-----------|--------------|
| FEED ROAD DIST. NO. | STATE | PROJ. NO. | FISCAL YEAR | SHEET NO. | TOTAL SHEETS |
| 7 | MICH. | 2582 | 1934 | 119-3 | 123 |
| ROUTE | COUNTY | CITY | | | |
| US-10 | WAYNE | DETROIT | | | |

B.M. #11 Elev. 617.356
 on base above walk N.E.
 cor. of Blg. on SW cor. of
 Woodward & Charlotte
 60' Lt. of Sta. 29+61

B.M. #10 Elev. 616.150
 on base 2' above walk S.E. of N.E.
 cor. of Blg. on SW cor. of
 Woodward & Temple 4' Woodward
 59.6' Lt. of Sta. 25+36

NOTE: See typical intersection layout on sheet 9

B.M. #9 Elev. 616.395
 on curb in N. End of East Ent. to Blg. at
 2709 Woodward 2' above ground
 82.5' Lt. of Sta. 22+19

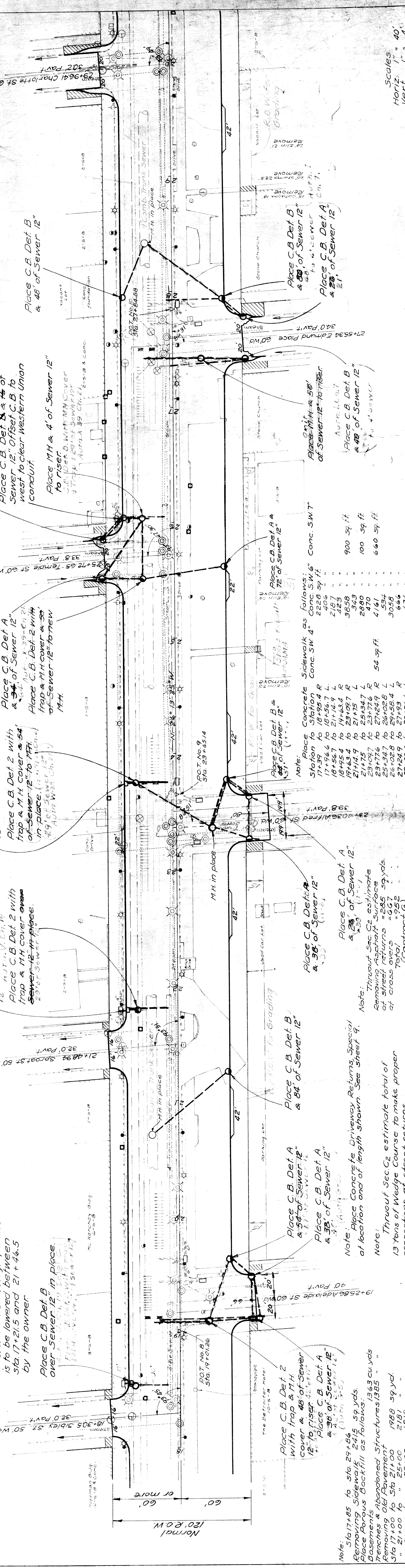
NOTE: Western Union Telegraph line is to be lowered between Sta. 17+21.5 and 21+4.5 by the owner

Place C.B. Det. B over Sewer 12" in place

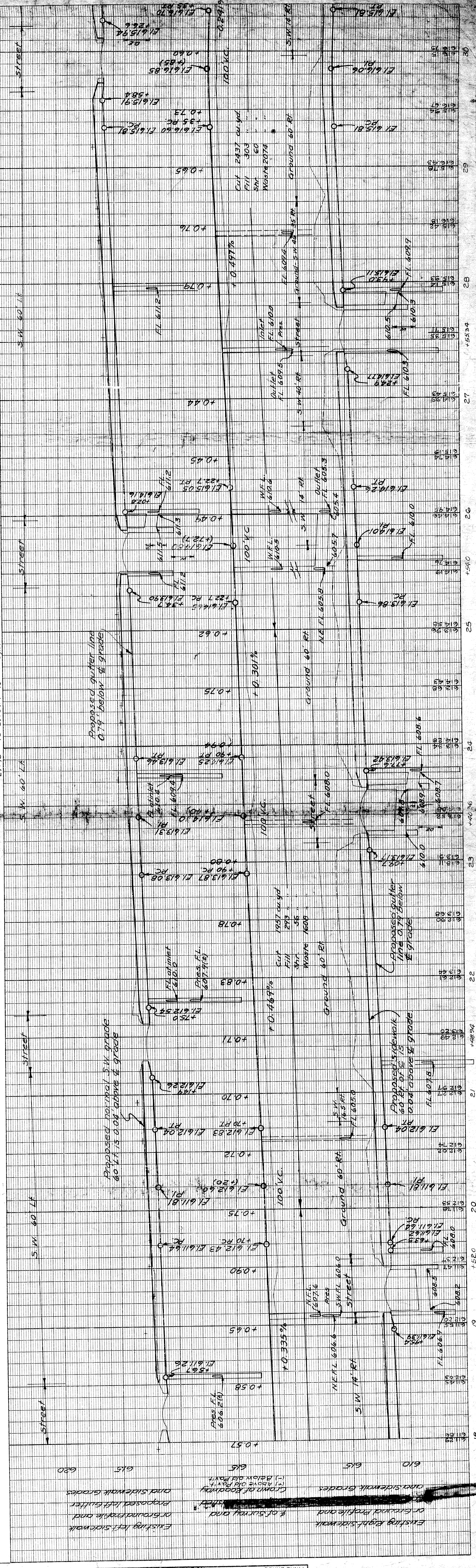
Place C.B. Det. A & 84" of Sewer 12"

Place C.B. Det. 2 with trap & M.H. cover & 54" of Sewer 12" to M.H. in place

Place C.B. Det. A & 28" of Sewer 12" to riser



| | | |
|--------------------|--------|-----------------|
| OPERATION | DATE | BY |
| DRAINAGE | 1934 | Keel-Erkson |
| QUANTITIES | | Atkinson-Bourne |
| CHECKED | 11/9-3 | C.M.W. |
| FINAL R.O.W. CHECK | | |
| SOUND | | |



| | | |
|---------------------|-------|---------------------|
| OPERATION | DATE | BY |
| SURVEYED | 12-33 | G. S. Goodman |
| PLOTTED | | R. E. H. T. - H. M. |
| PRELIMINARY CHECKED | | |
| PRELIMINARY GRADE | | |
| PLUMBING | | |
| CHECKED | | |
| FINAL GRADE | | |

Scale: Horiz. 1" = 40', Vert. 1" = 4'

Project No. R-21-B-1B

| FED. ROAD DIST. NO. | STATE | PROJ. NO. | FISCAL YEAR | SHEET NO. | TOTAL SHEETS |
|---------------------|-------|-----------|-------------|-----------|--------------|
| 7 | MICH. | 256(7752) | | | |

| CITY | COUNTY | ROUTE | PROJECT | DATE |
|---------|--------|-------|---------|------|
| DETROIT | WAYNE | 82-35 | | 1932 |

B.M. #13 Elev. 618.016
a cut on Walk at N side of
Entrance to The Arcadia
at 3527 Woodward
60.1 Lt. of Sta. 40+10

Place Inlet Def. C.
Place C.B. Def. A & B
of Sewer 12"

Place C.B. Def. 2
with Trap & M.H.
Cover & 1/8" of Sewer
12" to M.H. in place

Place Inlet Def. C.
Place C.B. Def. A & B
of Sewer 12"

Place C.B. Def. 2
with Trap & M.H.
Cover & 1/8" of Sewer
12" to M.H. in place

Place Inlet Def. C.
Place C.B. Def. A & B
of Sewer 12"

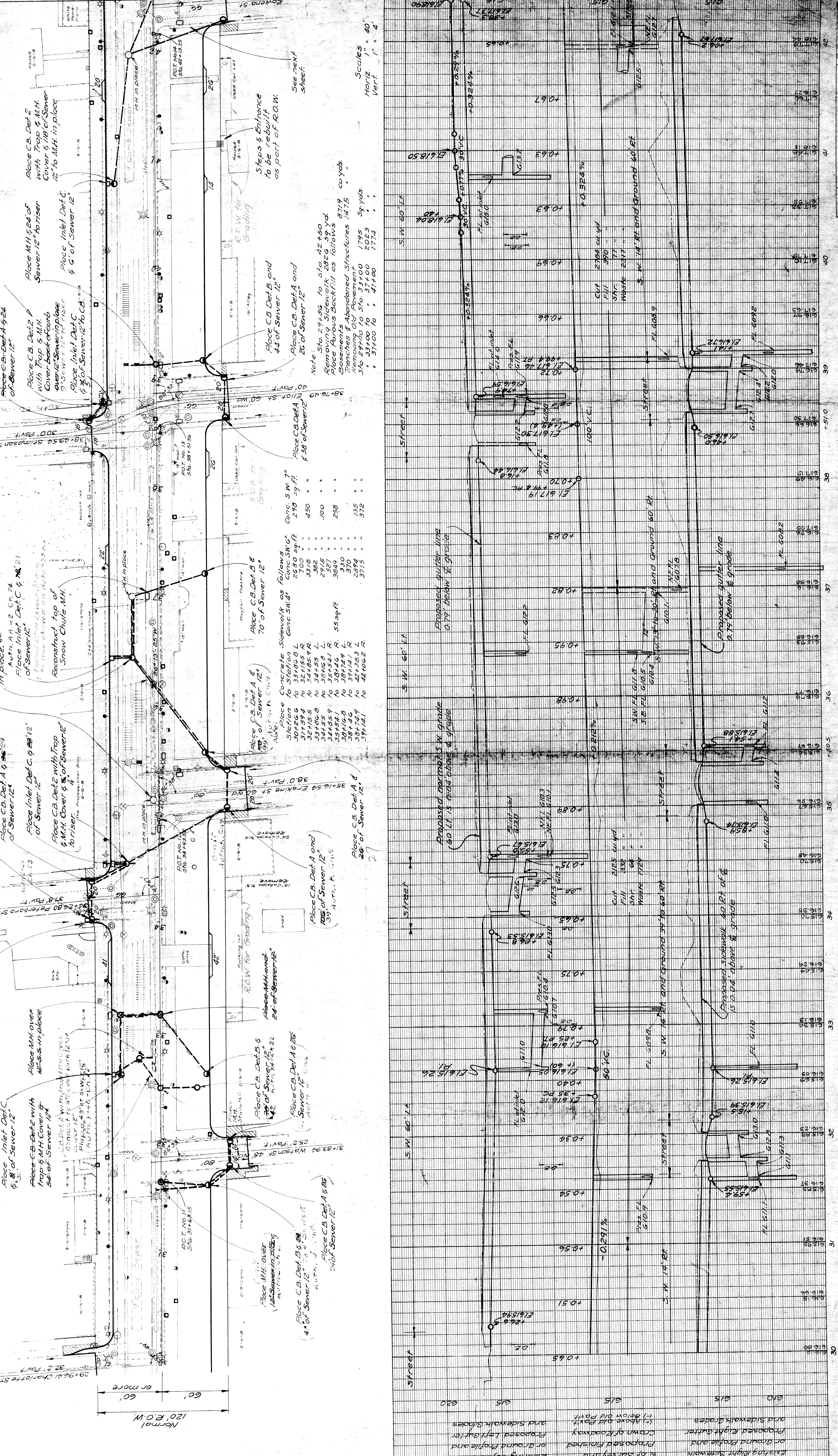
Place C.B. Def. 2
with Trap & M.H.
Cover & 1/8" of Sewer
12" to M.H. in place

Place Inlet Def. C.
Place C.B. Def. A & B
of Sewer 12"

Place C.B. Def. 2
with Trap & M.H.
Cover & 1/8" of Sewer
12" to M.H. in place

Place Inlet Def. C.
Place C.B. Def. A & B
of Sewer 12"

Place C.B. Def. 2
with Trap & M.H.
Cover & 1/8" of Sewer
12" to M.H. in place



| OPERATION | DATE |
|------------------------|------|
| SURVEYED | 7-34 |
| DESIGNED | 7-34 |
| PLANNING CHECKED | 8-34 |
| PRELIM. R.O.W. CHECKED | |
| GRAD. INSPECTED | |
| FINAL GRADE | |

| OPERATION | DATE |
|-----------|------|
| BY | |
| Checked | |
| Root | |
| Removal | |

| OPERATION | DATE |
|-----------|------|
| BY | |
| Checked | |
| Root | |
| Removal | |

| OPERATION | DATE |
|-----------|------|
| BY | |
| Checked | |
| Root | |
| Removal | |

| OPERATION | DATE |
|-----------|------|
| BY | |
| Checked | |
| Root | |
| Removal | |

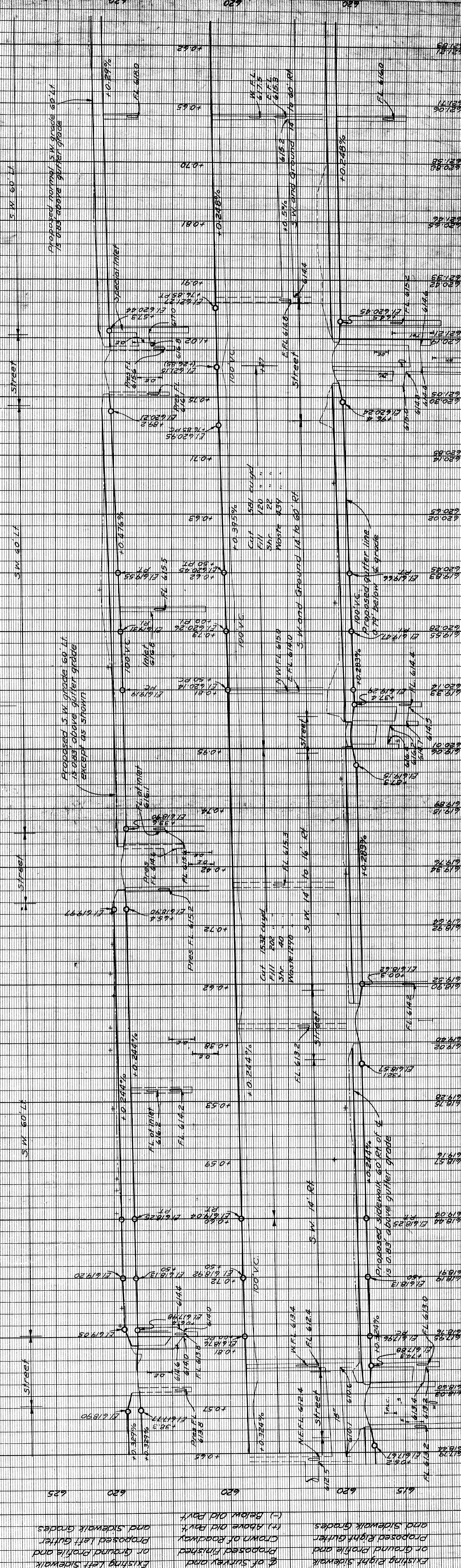
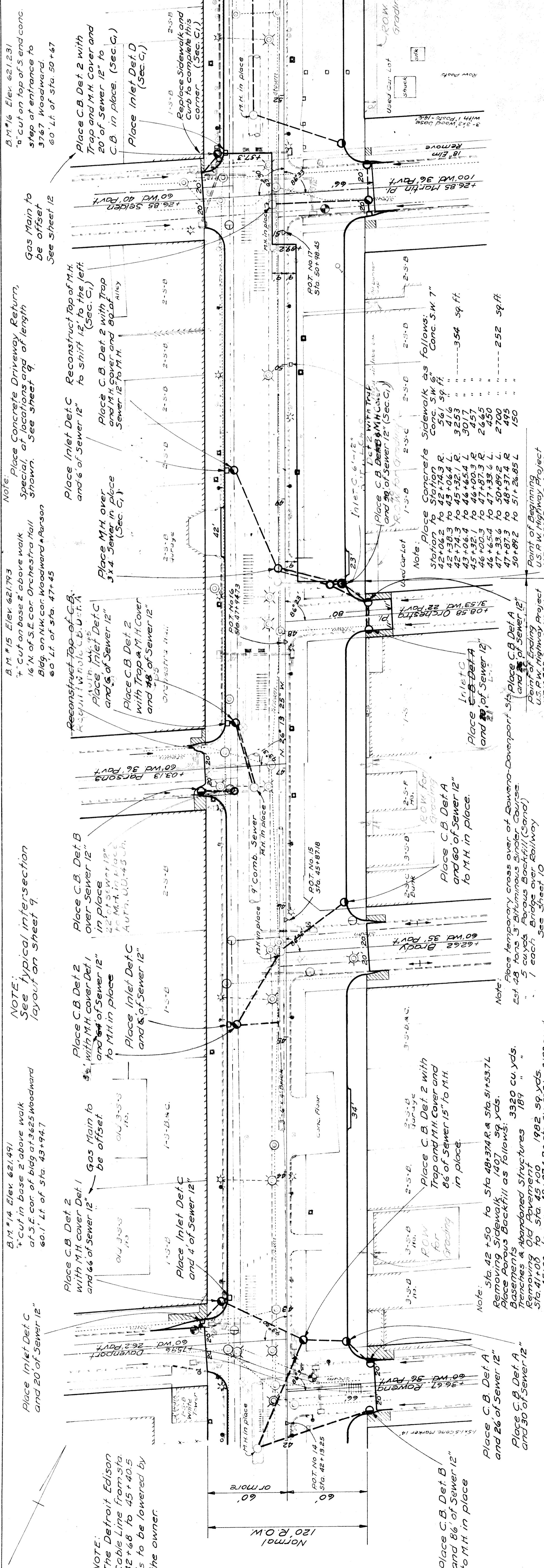
| OPERATION | DATE |
|-----------|------|
| BY | |
| Checked | |
| Root | |
| Removal | |

| OPERATION | DATE |
|-----------|------|
| BY | |
| Checked | |
| Root | |
| Removal | |

| OPERATION | DATE |
|-----------|------|
| BY | |
| Checked | |
| Root | |
| Removal | |

| OPERATION | DATE |
|-----------|------|
| BY | |
| Checked | |
| Root | |
| Removal | |

| | | | | | | | | | |
|---------------------|------------|--------|-------|-----------|---------|-------------|------|--------------|---|
| FED. ROAD DIST. NO. | 7 | STATE | MICH. | PROJ. NO. | 7 | FISCAL YEAR | 1934 | TOTAL SHEETS | 8 |
| ROUTE | 10 42 - 35 | COUNTY | WAYNE | CITY | DETROIT | SHEET NO. | 5 | USED SHEETS | 8 |
| FED. ROAD DIST. NO. | 7 | STATE | MICH. | PROJ. NO. | 7 | FISCAL YEAR | 1934 | TOTAL SHEETS | 8 |
| ROUTE | 10 42 - 35 | COUNTY | WAYNE | CITY | DETROIT | SHEET NO. | 5 | USED SHEETS | 8 |



OPERATION

| | |
|--------------------|----------------|
| DATE | 1/31 |
| DRAWN | Root-Edison |
| QUANTITIES | Edison-Bauerle |
| TRACED | C.H.W. |
| FINAL R.O.W. CHECK | Edison |
| CHECKED | Edison |
| DESIGNED | Edison |
| APPROVED | Edison |

OPERATION

| | |
|--------------------|--------|
| DATE | 1/31 |
| DRAWN | Edison |
| QUANTITIES | Edison |
| TRACED | Edison |
| FINAL R.O.W. CHECK | Edison |
| CHECKED | Edison |
| DESIGNED | Edison |
| APPROVED | Edison |

OPERATION

| | |
|--------------------|--------|
| DATE | 1/31 |
| DRAWN | Edison |
| QUANTITIES | Edison |
| TRACED | Edison |
| FINAL R.O.W. CHECK | Edison |
| CHECKED | Edison |
| DESIGNED | Edison |
| APPROVED | Edison |

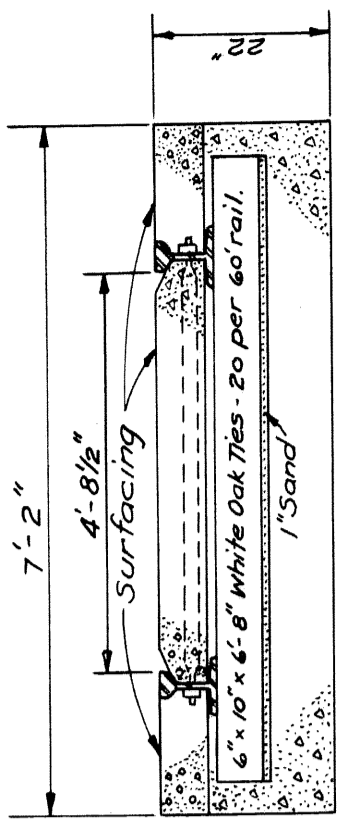
OPERATION

| | |
|--------------------|--------|
| DATE | 1/31 |
| DRAWN | Edison |
| QUANTITIES | Edison |
| TRACED | Edison |
| FINAL R.O.W. CHECK | Edison |
| CHECKED | Edison |
| DESIGNED | Edison |
| APPROVED | Edison |

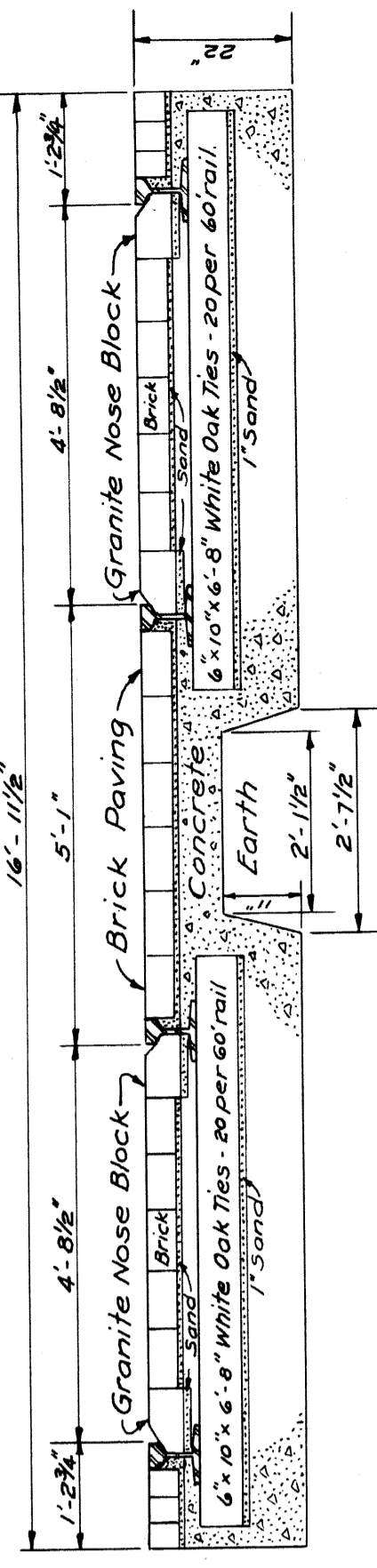
OPERATION

| | |
|--------------------|--------|
| DATE | 1/31 |
| DRAWN | Edison |
| QUANTITIES | Edison |
| TRACED | Edison |
| FINAL R.O.W. CHECK | Edison |
| CHECKED | Edison |
| DESIGNED | Edison |
| APPROVED | Edison |

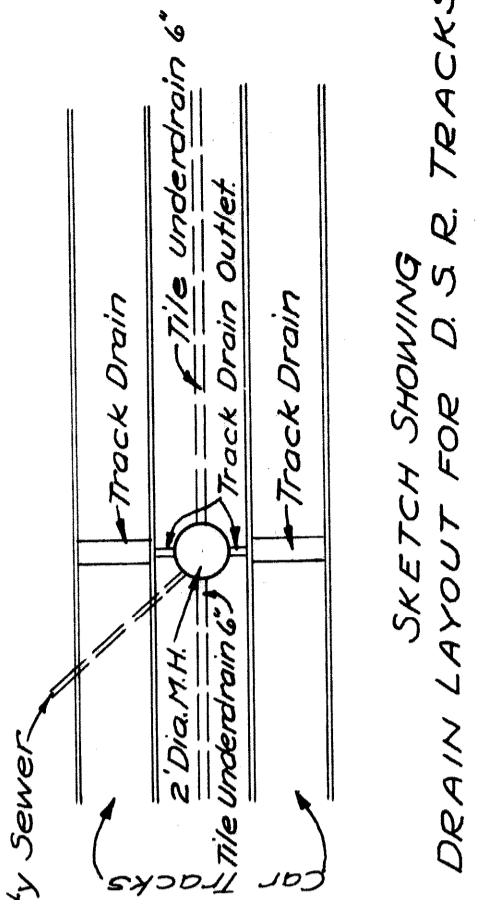
| | | | | | | | |
|---------------------------|-------|----------------------|----------------|-------------|---------|--------------|---|
| FED. ROAD DIST. NO. | 7 | MICH. PROJ. NO. | 259 C-4 (1935) | FISCAL YEAR | 1935 | TOTAL SHEETS | 4 |
| ROUTE | 82-35 | COUNTY | WAYNE | CITY | DETROIT | SHEET NO. | 7 |
| FED. ROAD STATE DIST. NO. | 1010 | FED. AID FISCAL YEAR | | | | TOTAL SHEETS | 7 |
| ROUTE | | COUNTY | | TWP | | SHEET NO. | |
| | | | | | | TOTAL SHEETS | |



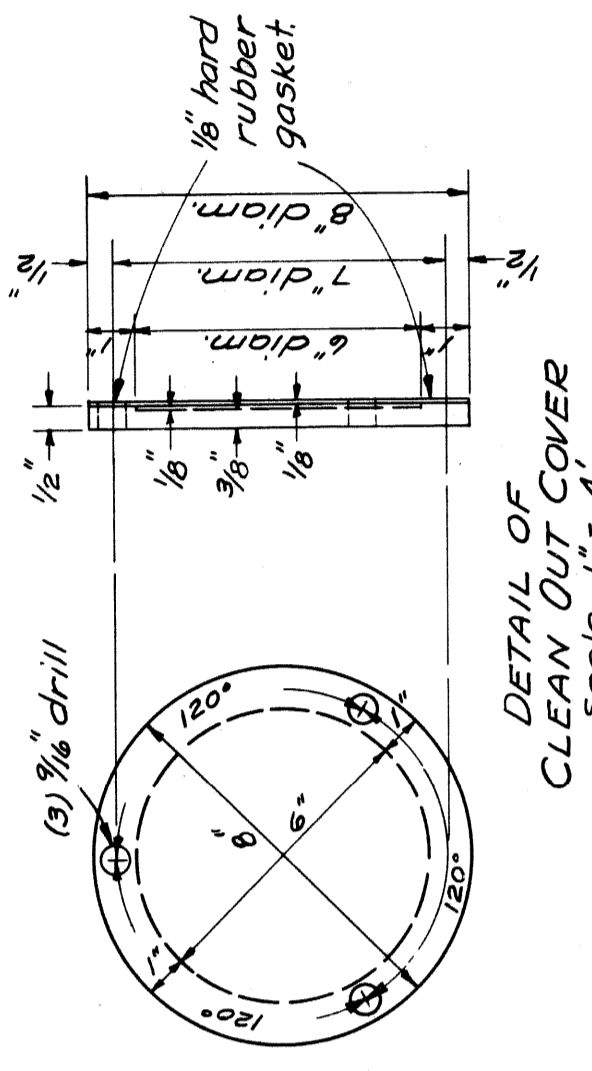
TYPICAL SECTION SHOWING SINGLE TRACK IN PLACE
Surfacing as follows
Elliott St. - Compressed Concrete
Rowena St. - Compressed Concrete.



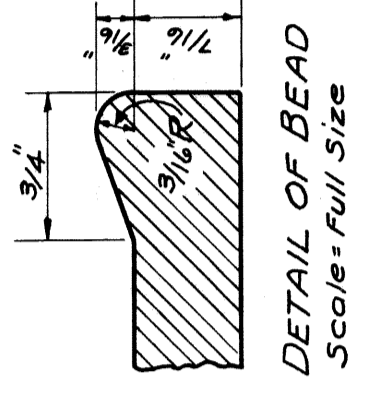
TYPICAL SECTION SHOWING DOUBLE TRACK IN PLACE
ON WOODWARD AVE
FROM ADAMS TO WILLIS
Scale: 1" = 2'



SKETCH SHOWING DRAIN LAYOUT FOR D.S.R. TRACKS.
Tile Underdrain 6" to be placed by Road Contractor. Track Drains and Drain Outlets, Manhole and Outlet to City Sewer System to be placed by the D.S.R. Commission.

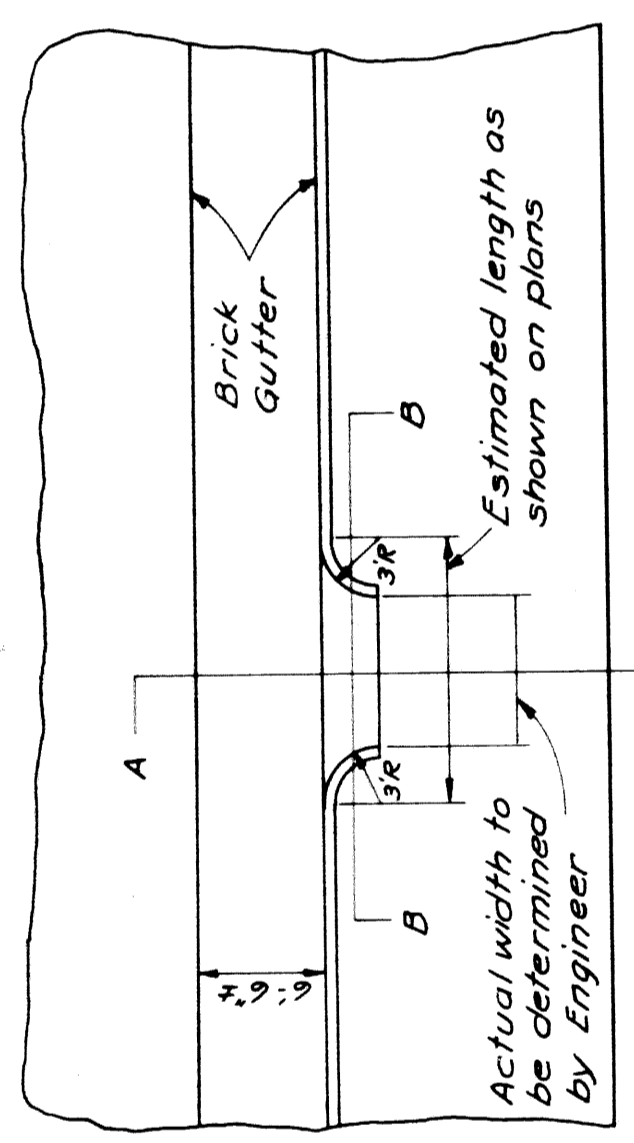


DETAIL OF CLEAN OUT COVER
Scale: 1" = 4'

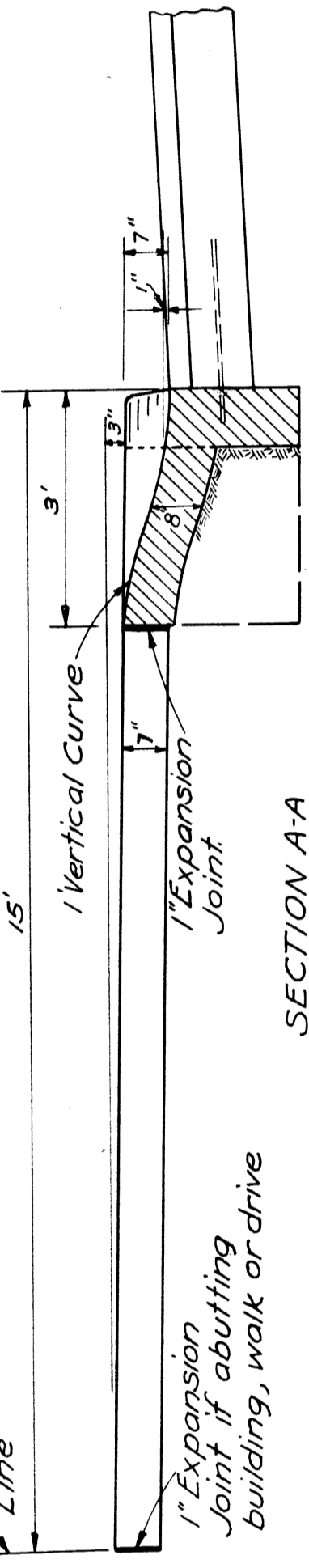


DETAIL OF BEAD
Scale: Full size

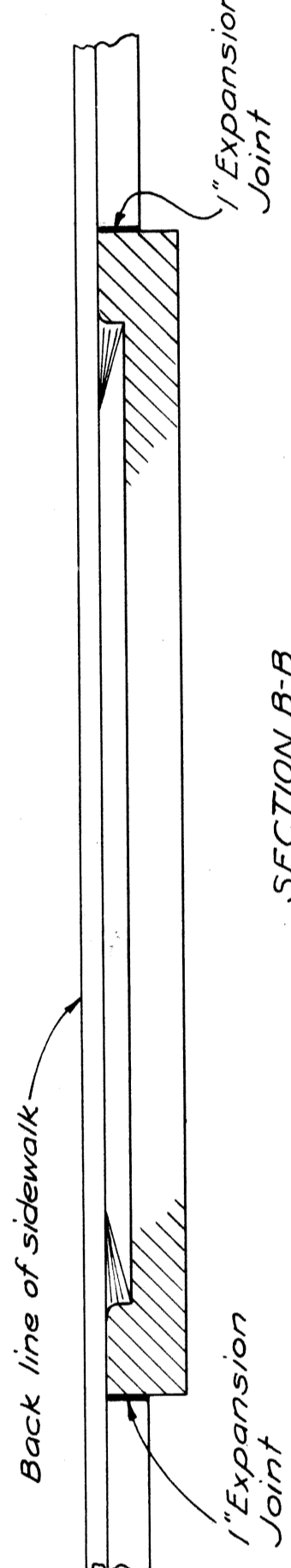
NOTE: Construction to be in accordance with methods outlined on STD. Plan E-4-A-16. 0.103 cu yds Concrete Grade A per lined foot of return



PLAN Scale: 1" = 10'

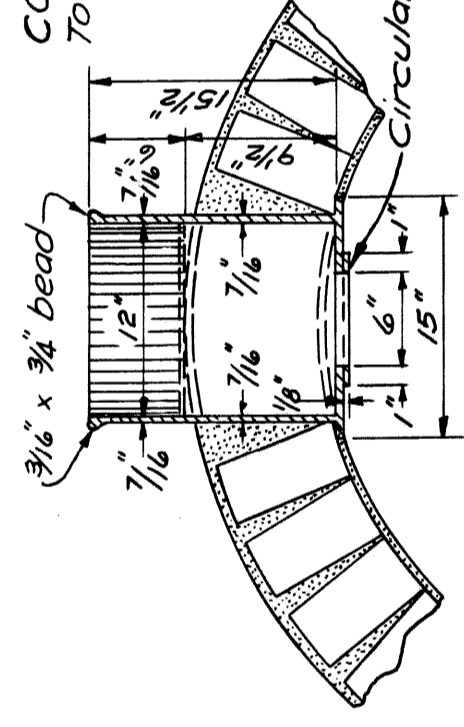


SECTION A-A
Scale: 1 1/2" = 2'

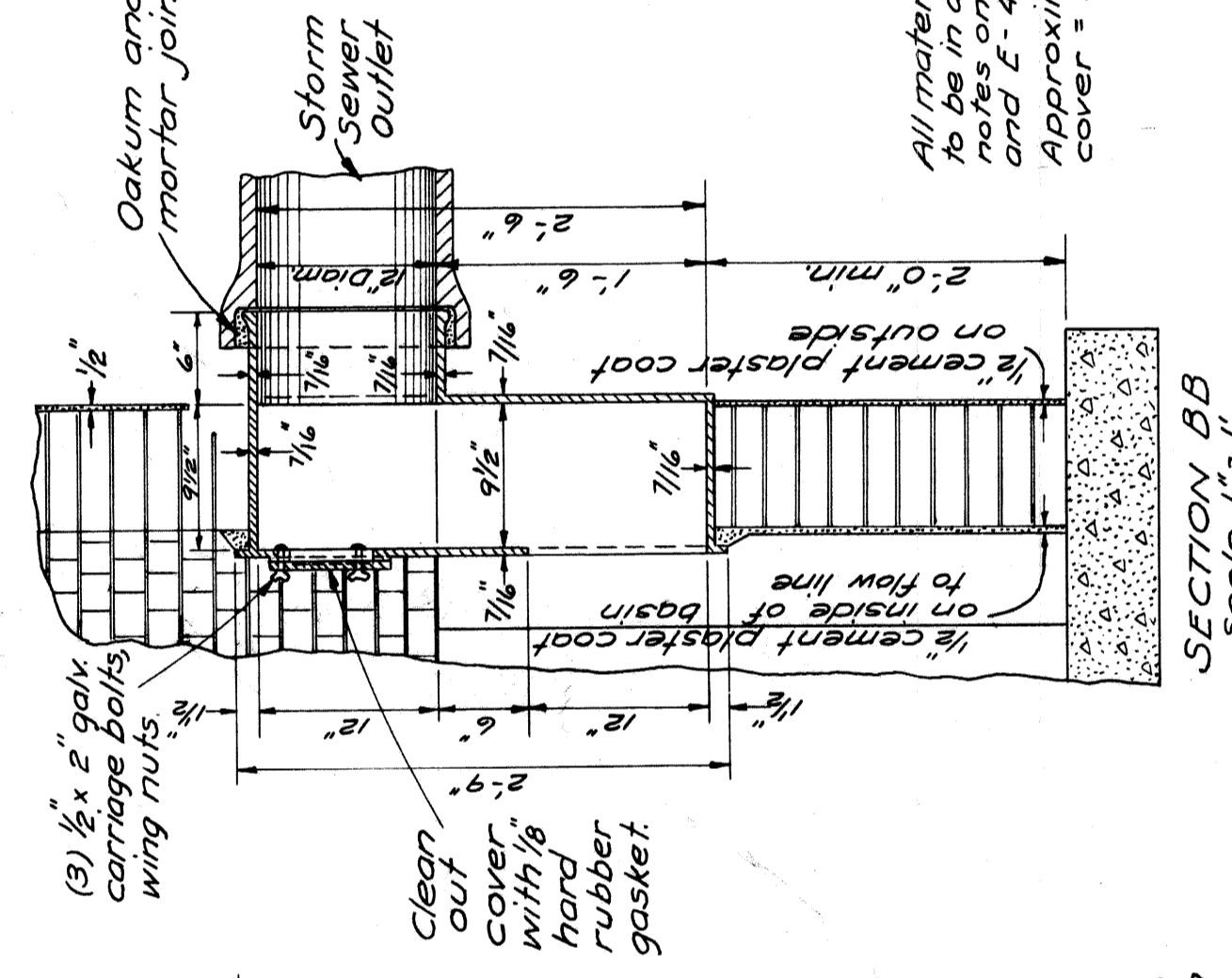


SECTION B-B
Scale: 1 1/2" = 2'

DETAILS OF CONCRETE DRIVEWAY RETURN-SPECIAL
To apply where called for on plans.

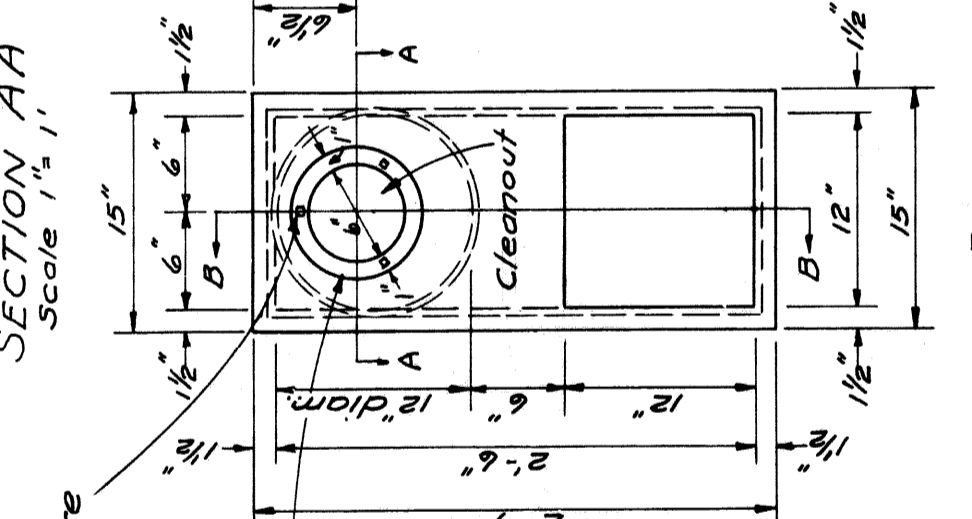
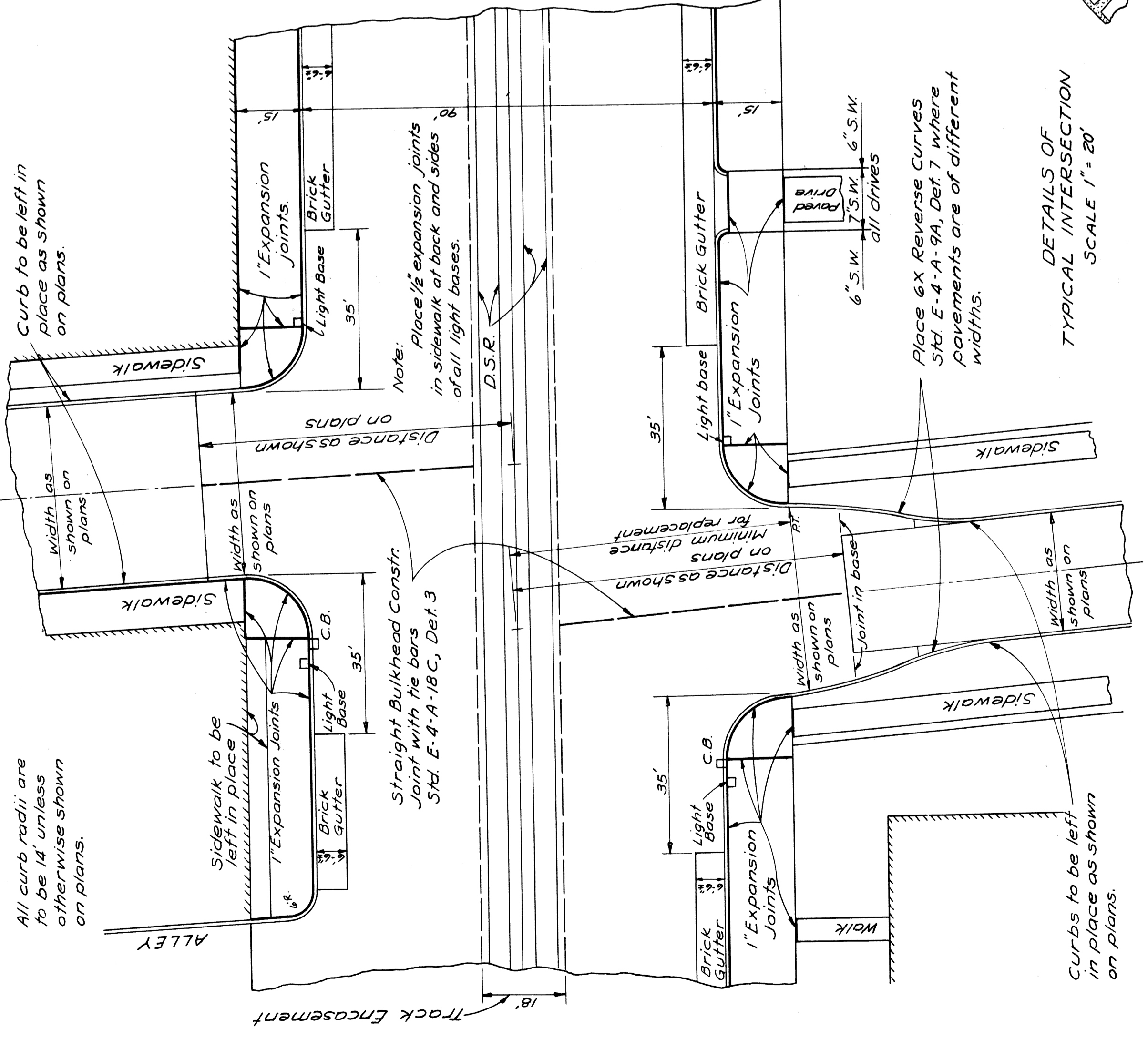


DETAILS OF TYPICAL INTERSECTION
SCALE: 1 1/2" = 1'



FRONT ELEVATION CAST IRON TRAP
Scale: 1 1/2" = 1'

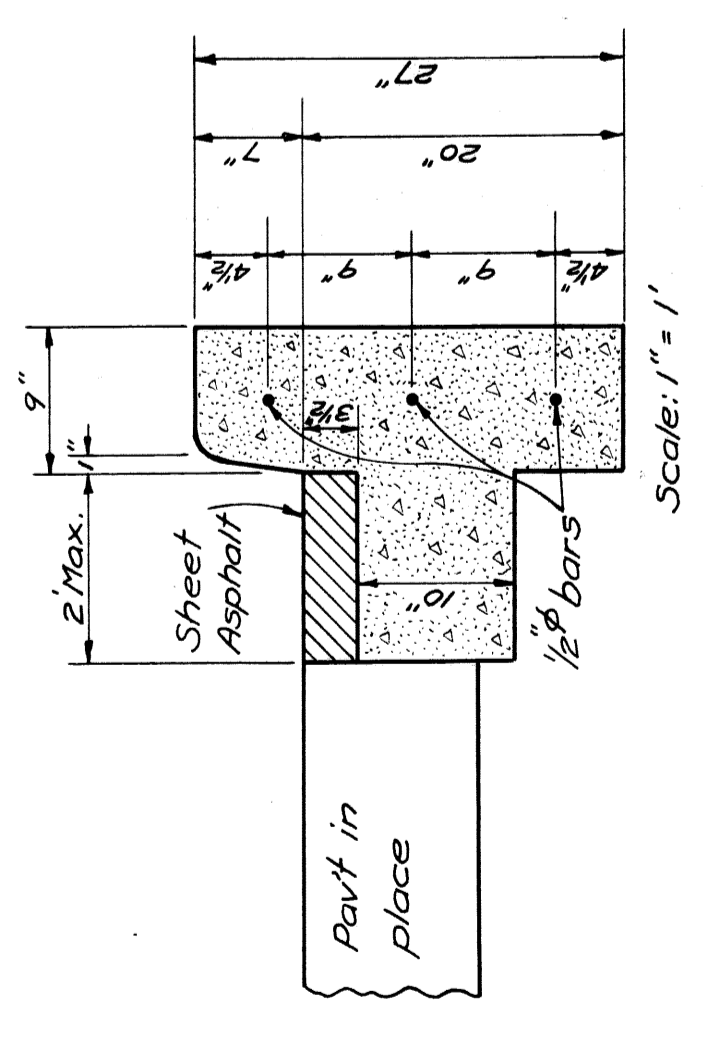
All material and workmanship are to be in accordance with general notes on Standard Plan E-4-A-91A and E-4-A-92A.
Approximate weight of trap and cover = 200 pounds.



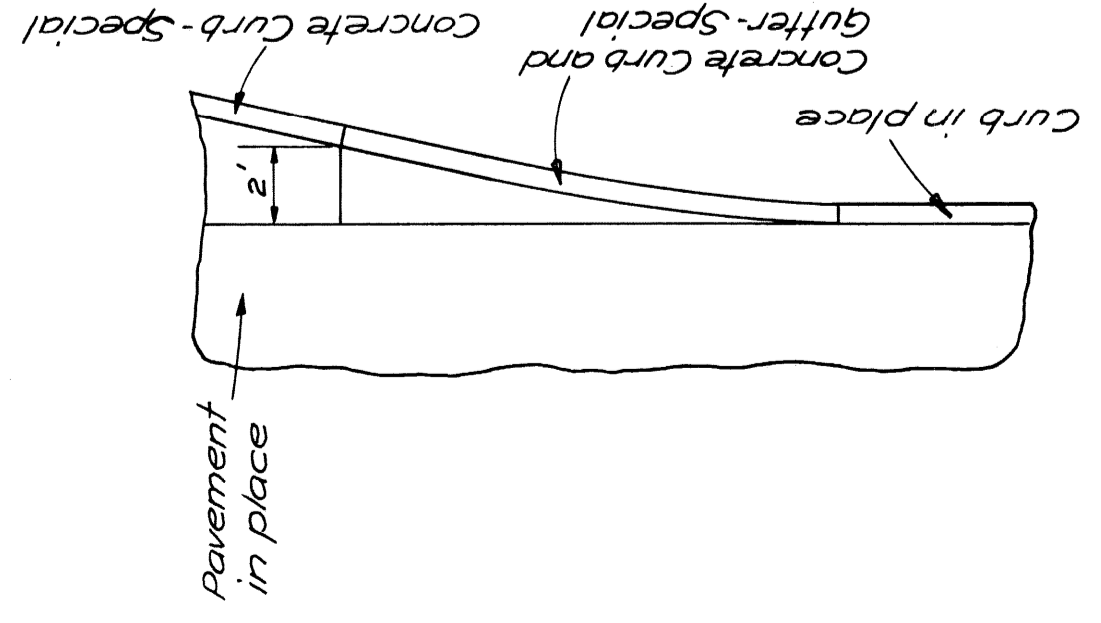
SECTION AA
Scale: 1 1/2" = 1'

DETAILS SHOWING CAST IRON TRAP

To be placed in all catch basins where called for on construction.



DETAIL OF CONCRETE CURB AND GUTTER-SPECIAL
To apply where old pavement is to be widened with reverse curves. Construction to be done in accordance with methods outlined in Standard Plan E-4-A-16.
To be paid for as Concrete Curb-Special.



All curb radii are to be 14' unless otherwise shown on plans.

Sidewalk to be left in place

Notes: Place 1/2" expansion joints in sidewalk at back and sides of all light bases.

Straight Bulkhead Constr. Joint with the bars Std. E-4-A-18C, Def. 3

Place 6x Reverse Curves Std. E-4-A-9A, Def. 7 where pavements are of different widths.

Curbs to be left in place as shown on plans.

Curbs to be left in place as shown on plans.

Curbs to be left in place as shown on plans.

Curbs to be left in place as shown on plans.

Curbs to be left in place as shown on plans.

Concrete Curb and Gutter-Special

Concrete Curb and Gutter-Special

Concrete Curb and Gutter-Special

Concrete Curb and Gutter-Special

Concrete Curb and Gutter-Special

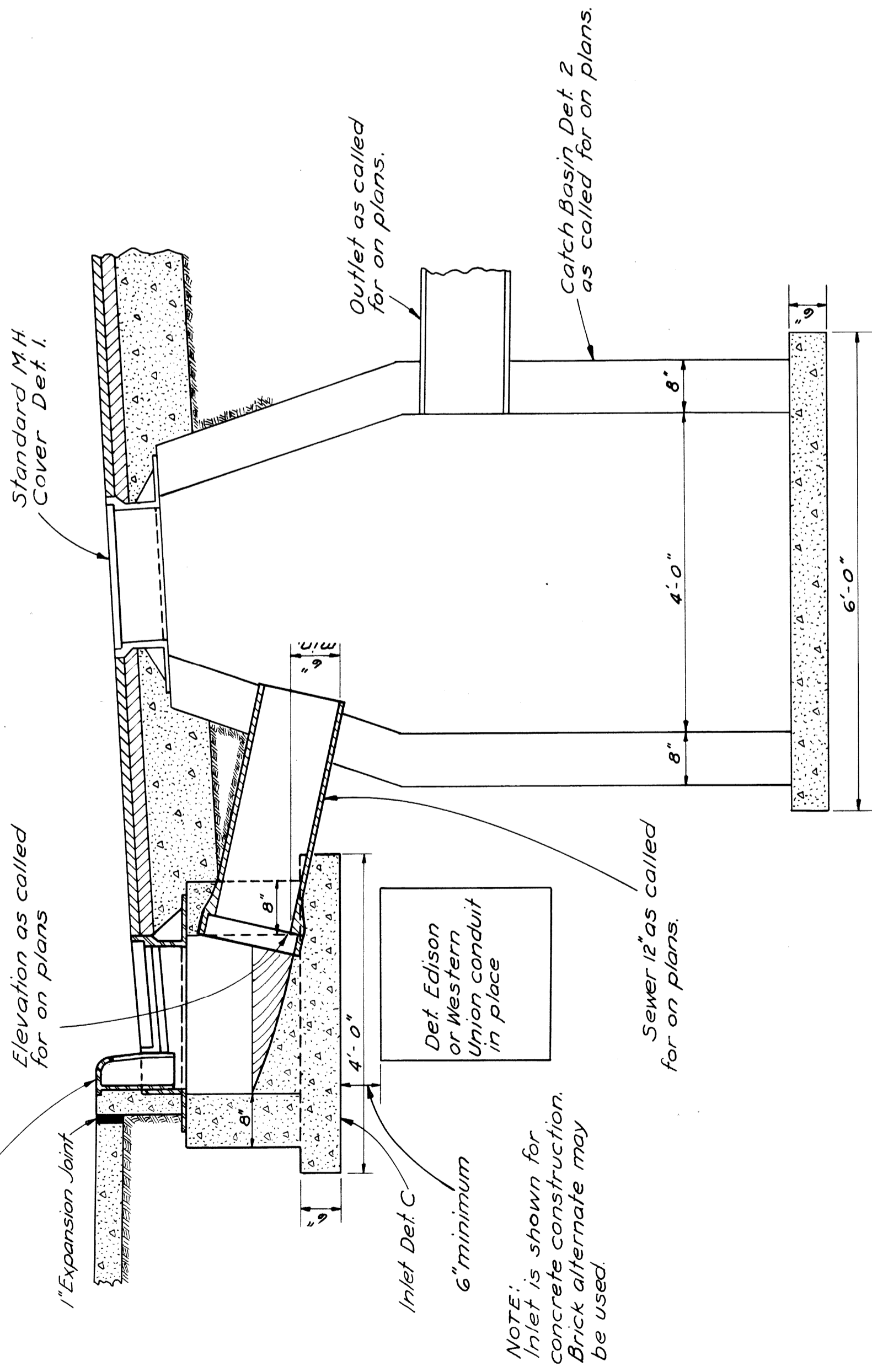
| FED. ROAD DIST. NO. | STATE | PROJ. NO. | FISCAL YEAR | TOTAL SHEETS | |
|---------------------|-------|--------------------|-------------|--------------|--------------|
| 7 | MICH. | 250 C-2 (1935) | | 10 | |
| ROUTE | STATE | COUNTY | CITY | SHEET NO. | TOTAL SHEETS |
| U.S. 10 B2 - 35 | | WAYNE | DETROIT | 10 | |
| FED. ROAD DIST. NO. | STATE | FED. AID PROJ. NO. | FISCAL YEAR | TOTAL SHEETS | |
| | MICH. | | | | |
| ROUTE | STATE | COUNTY | TWP | SHEET NO. | TOTAL SHEETS |
| | | | | | |

LEGEND

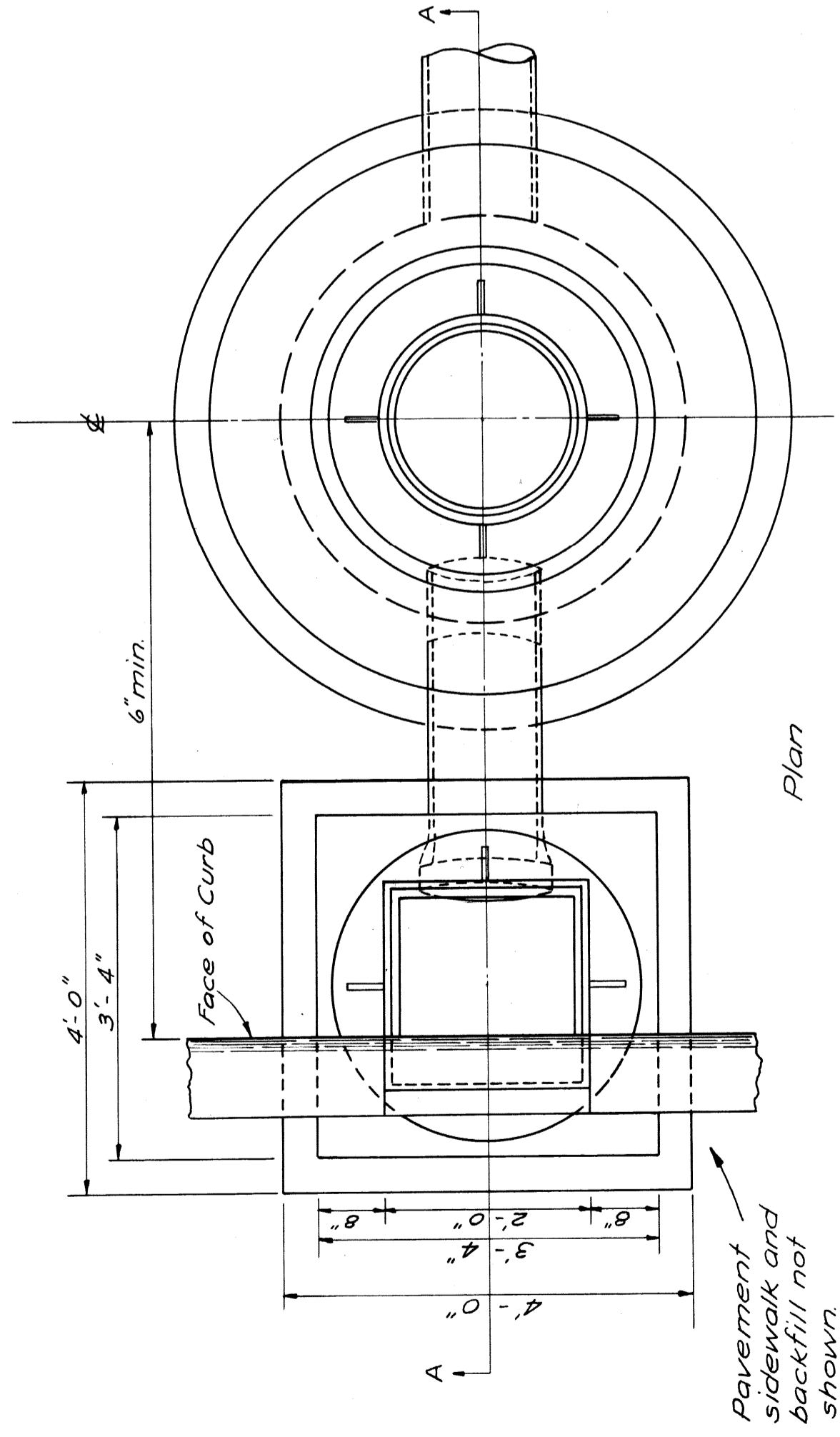
FOR
CATCH BASINS AND INLETS
AS CALLED FOR ON PLANS

- C. B. DET. A = Standard E-4-A-91A, Det. 2, with C. B. Cover - Special (sheet #11)
- C. B. DET. B = Standard E-4-A-91A, Det. 2 with Cast Iron Trap (sheet # 9) and C. B. Cover - Special (sheet # 11)
- INLET DET. C = Standard E-4-A-91A, Det. 4, with C. B. Cover - Special (sheet #11)
(See also this sheet)

Cast Iron Cover as shown on sheet #11 to be placed as part of Inlet.



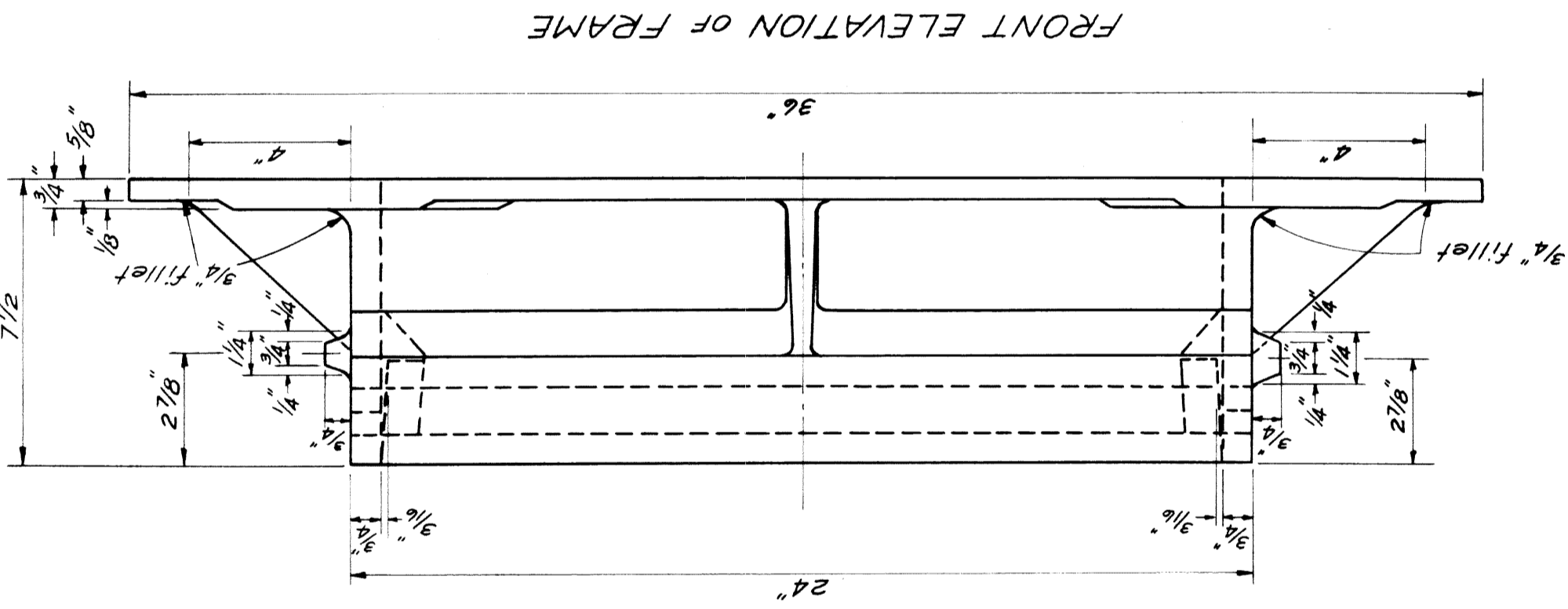
Section A - A.



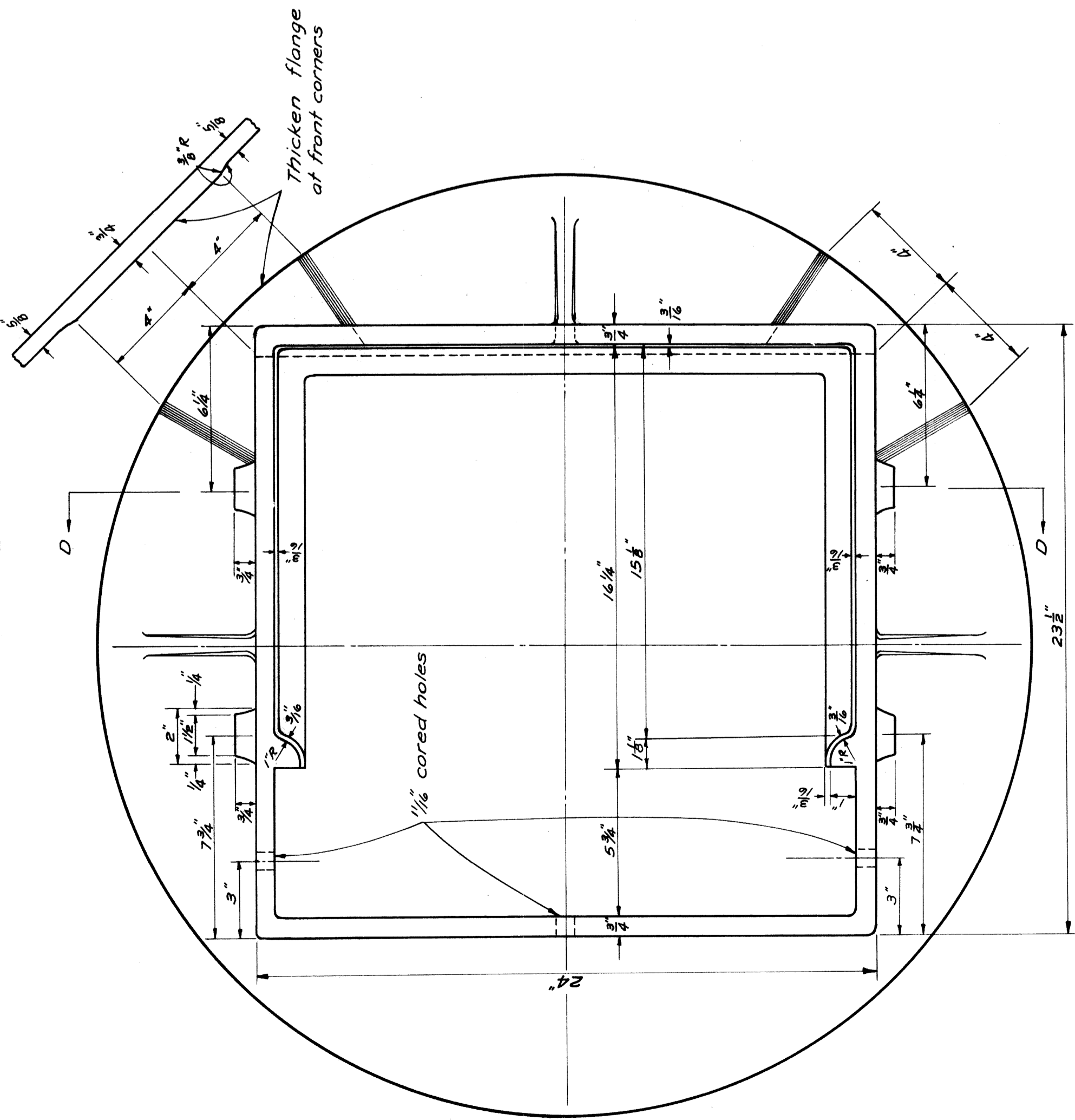
Plan

DETAIL OF INLET, DETAIL C
Showing method of connecting to Catch Basin Det. 2
To apply where called for on plans ordered by the Engineer.
Scale $\frac{3}{4}'' = 1'$

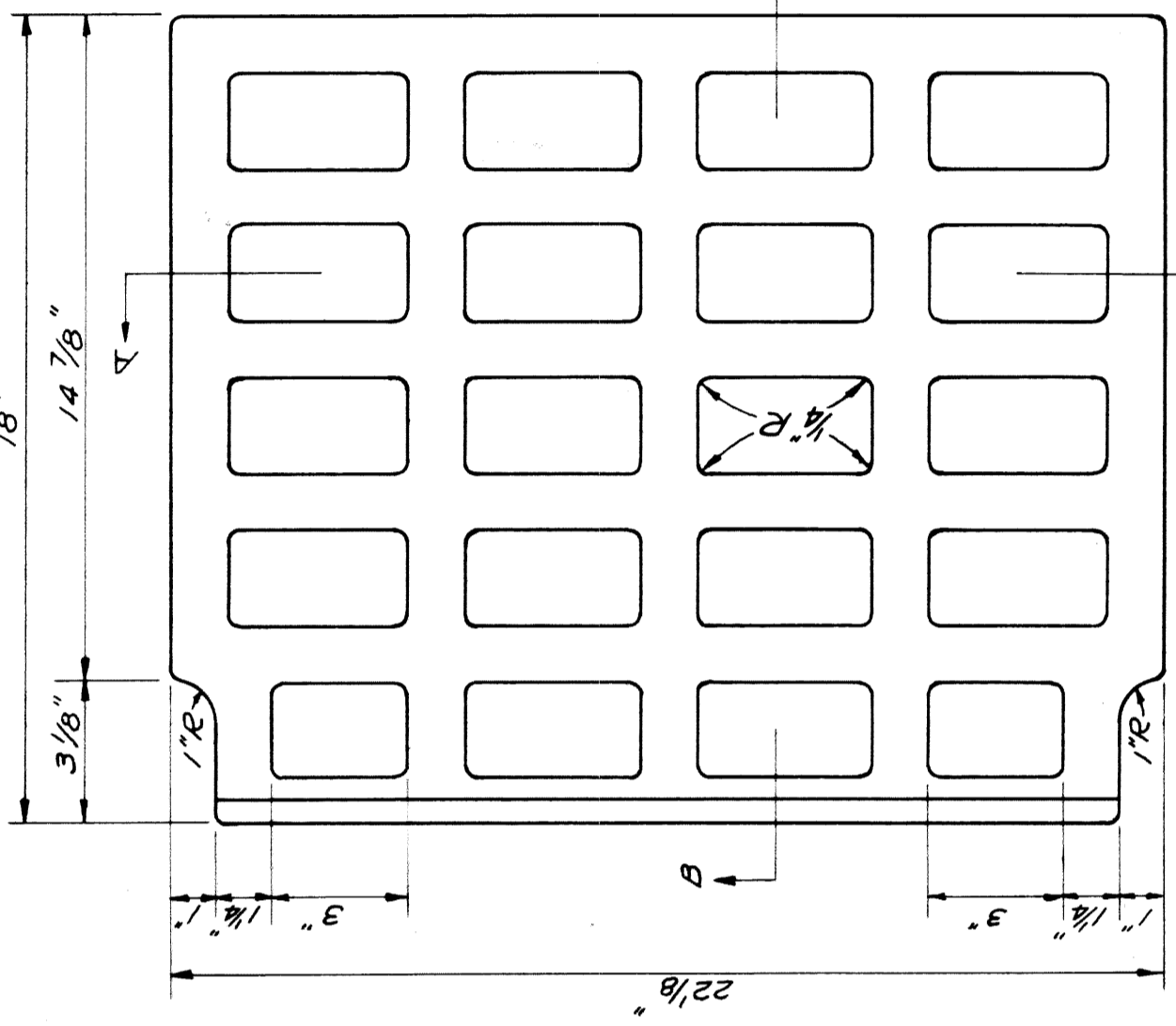
| | | | | | | |
|---------------------|-------------|--------------------|-------------|-----------|--------------|--------------|
| FED. ROAD DIST. NO. | FISCAL YEAR | PROJECT | CITY | TWP | SHEET NO. | TOTAL SHEETS |
| 7 | 1938 | WAYNE | DETROIT | | 11 | 11 |
| STATE | COUNTY | FED. AID PROJ. NO. | FISCAL YEAR | SHEET NO. | TOTAL SHEETS | |
| MICH. | WAYNE | | 1938 | 11 | | |
| ROUTE | PROJECT | CITY | COUNTY | TWP | SHEET NO. | TOTAL SHEETS |
| U.S. 10 | 82-35 | WAYNE | DETROIT | | 11 | 11 |
| FED. ROAD DIST. NO. | FISCAL YEAR | PROJECT | CITY | TWP | SHEET NO. | TOTAL SHEETS |
| | | | | | | |



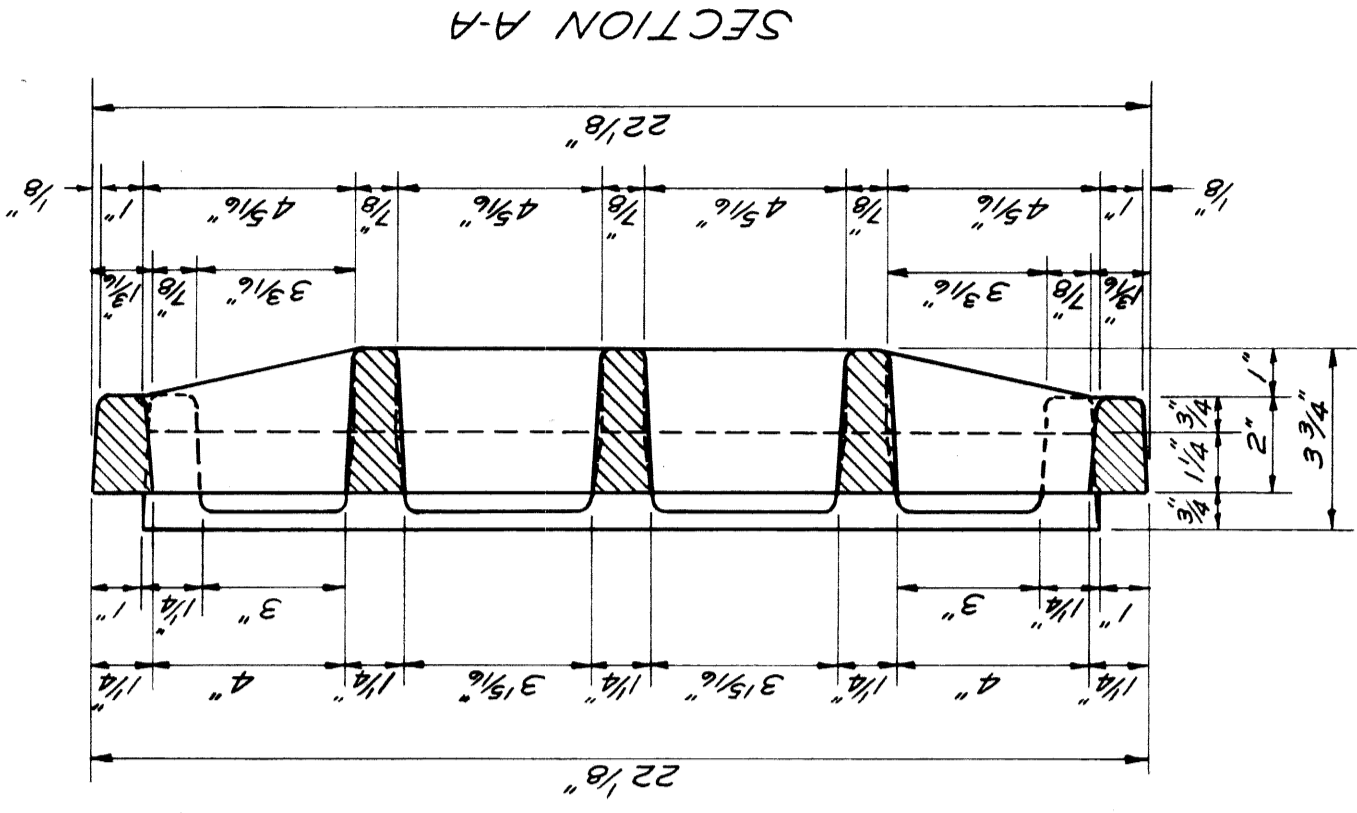
FRONT ELEVATION OF FRAME



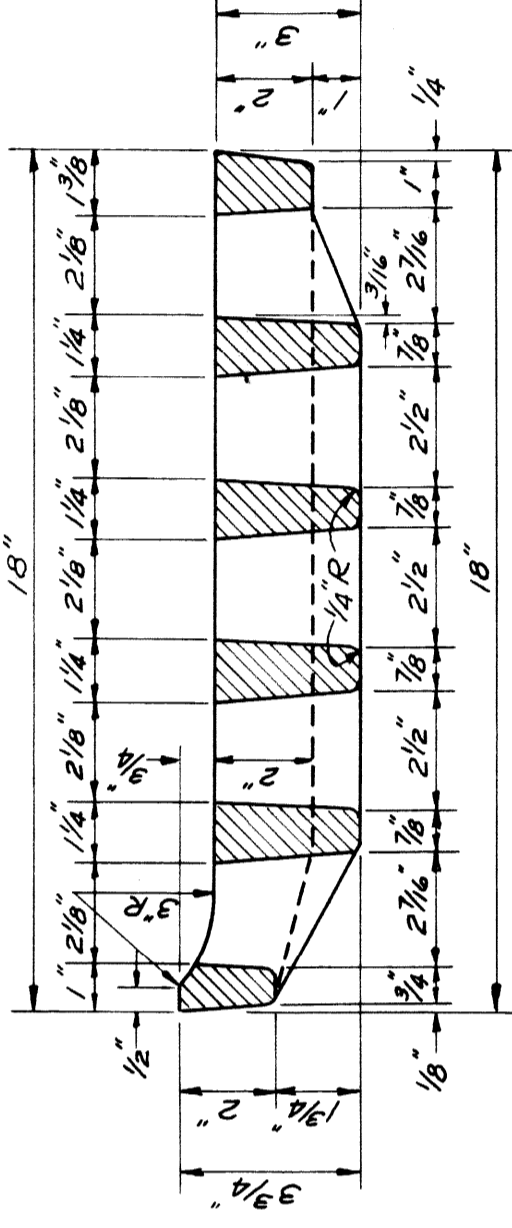
PLAN VIEW OF FRAME



PLAN VIEW OF GRATE



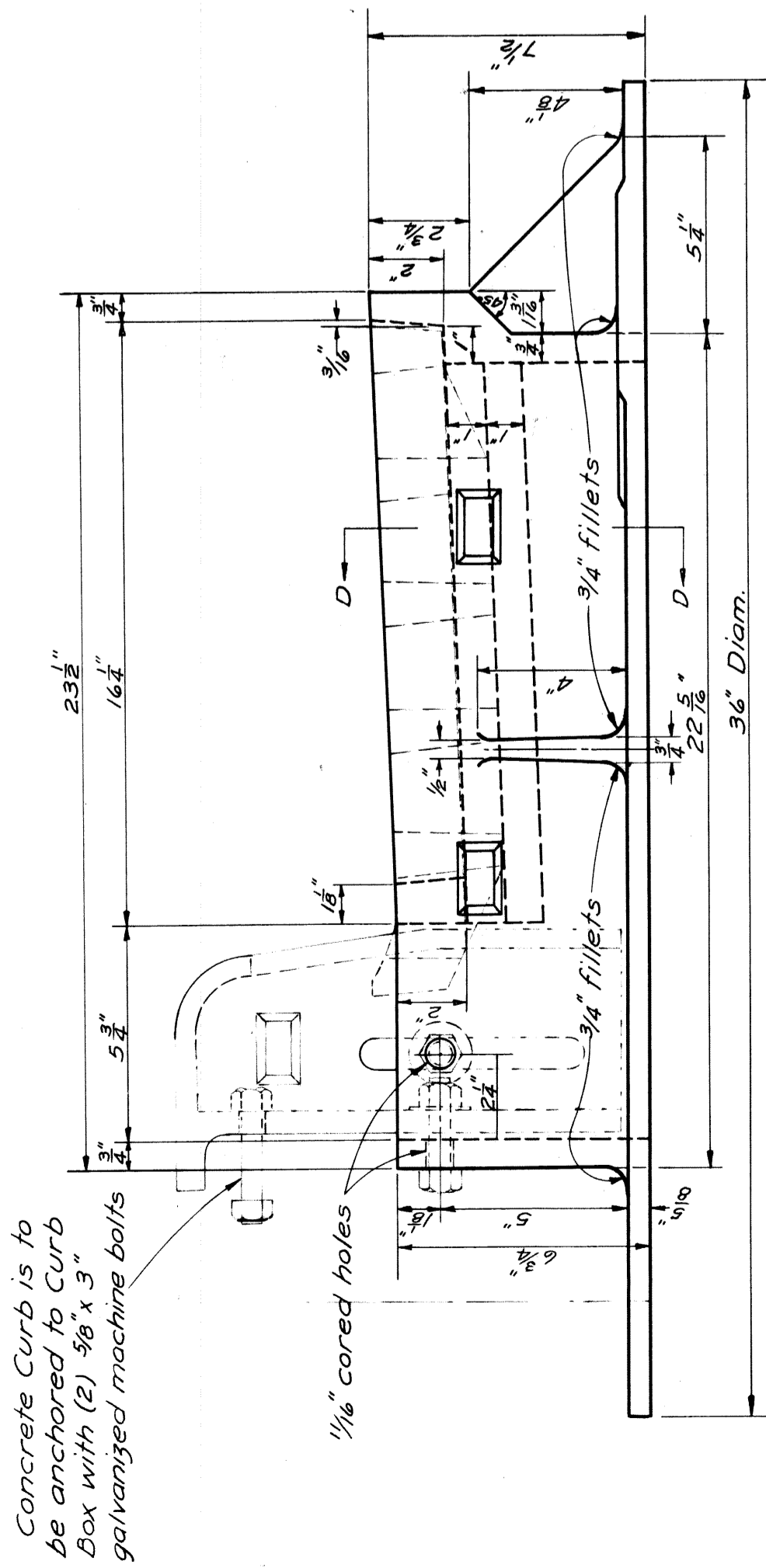
SECTION A-A



SECTION B-B

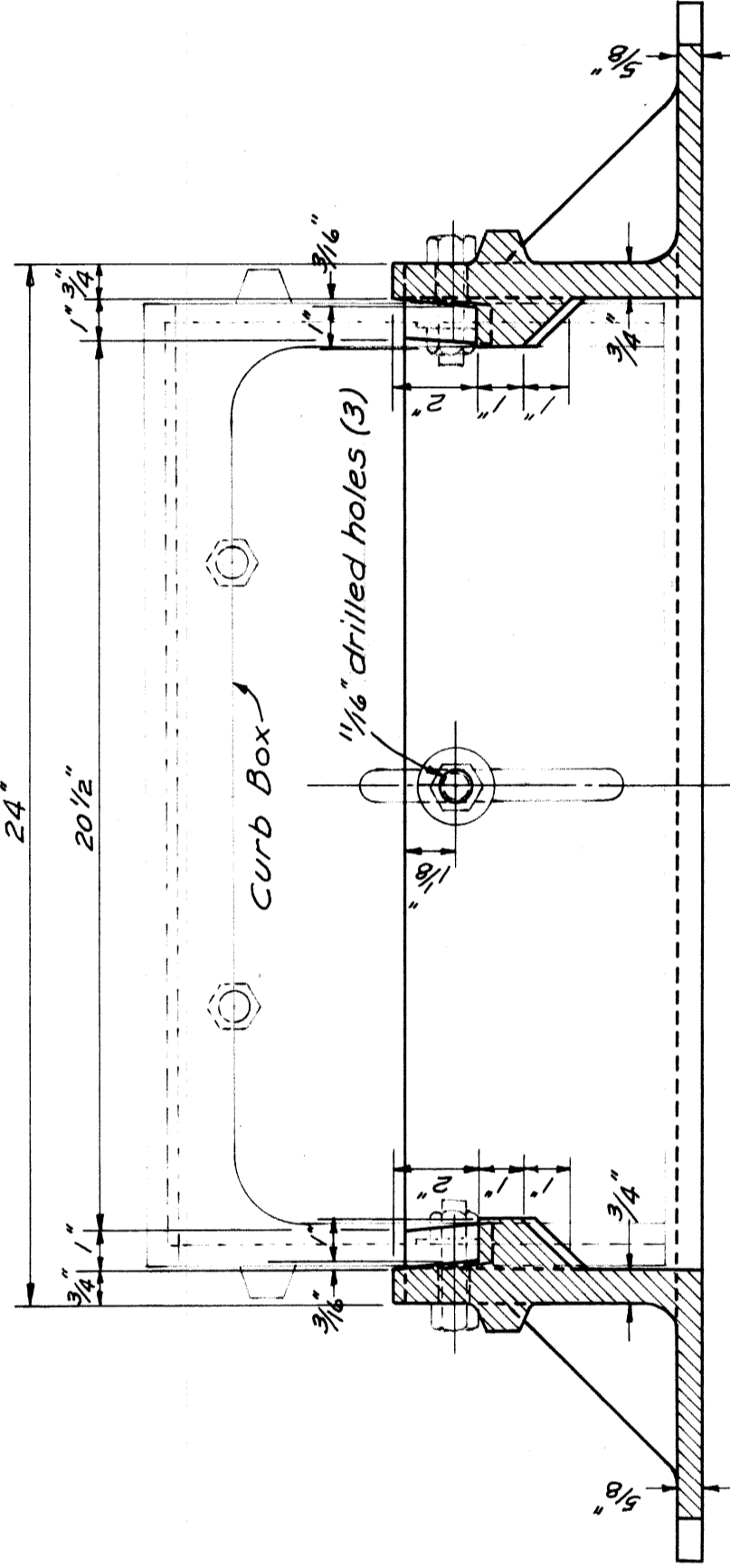
NOTE:

All materials and workmanship shall be in accordance with Michigan State Highway Department 1934 Standard Specifications. All castings shall be cleaned by sand blasting or tumbling. The bearing surface of the grate and the seat for same shall be machined so as to produce an even bearing for the grate at all points without rocking or tilting.



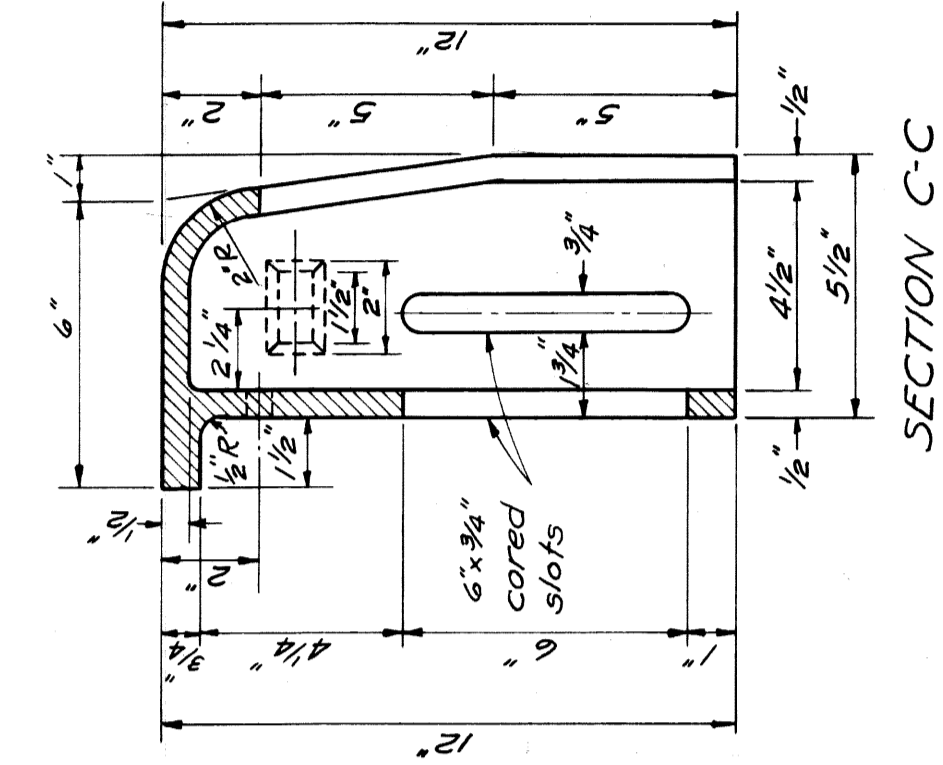
SIDE ELEVATION OF FRAME WITH CURB BOX AND GRATE IN PLACE

Concrete Curb is to be anchored to Curb Box with (2) 5/8 x 3 inch galvanized machine bolts

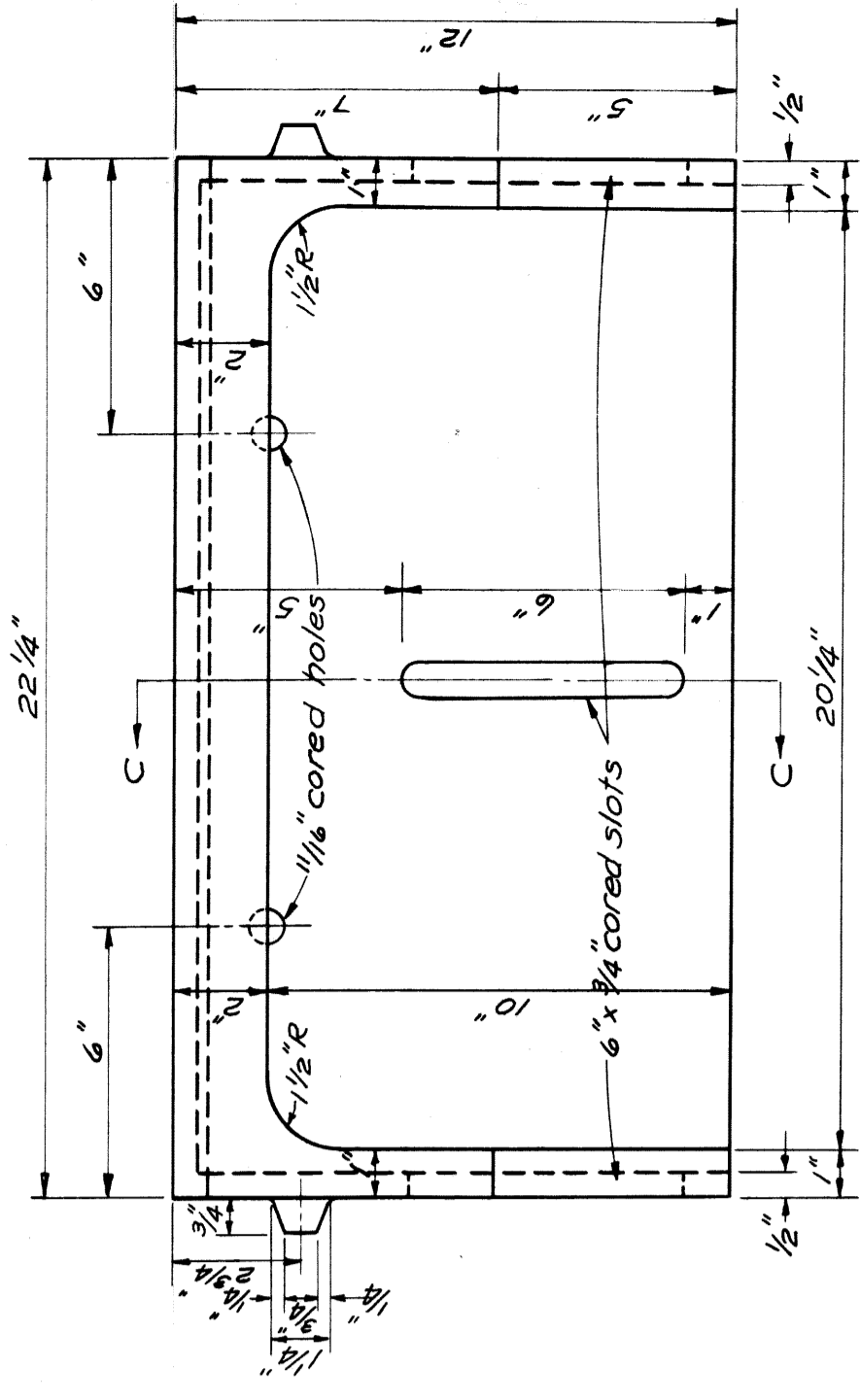


SECTION D-D

DETAILS SHOWING CATCH BASIN COVER - SPECIAL SCALE 3"=1'-0"



SECTION C-C



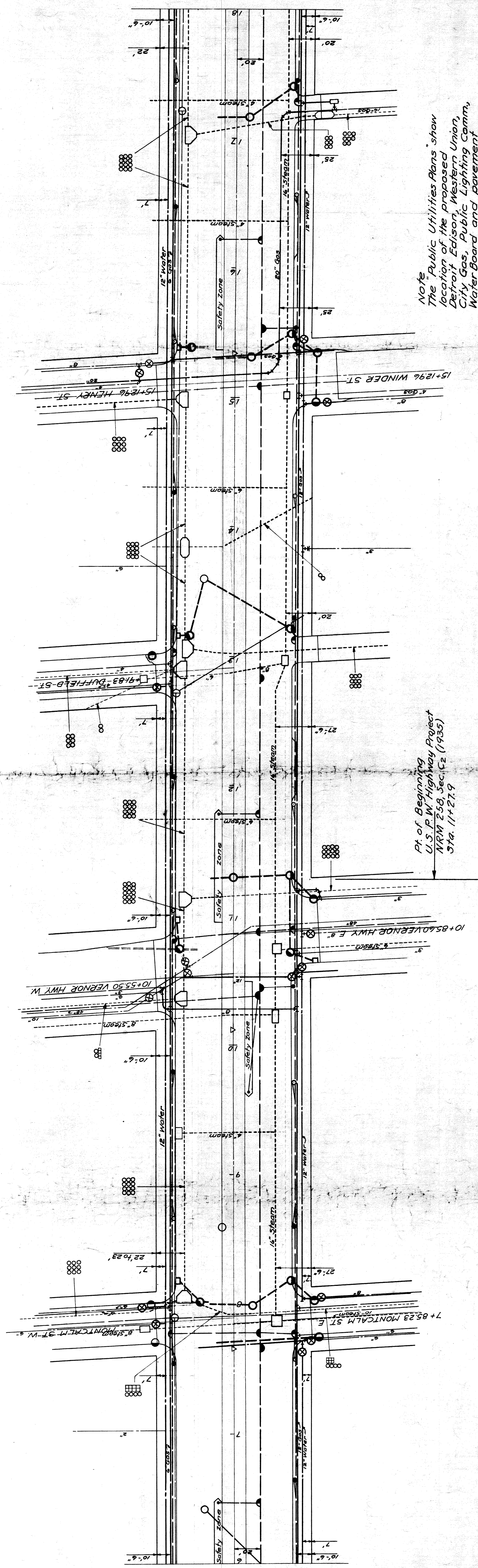
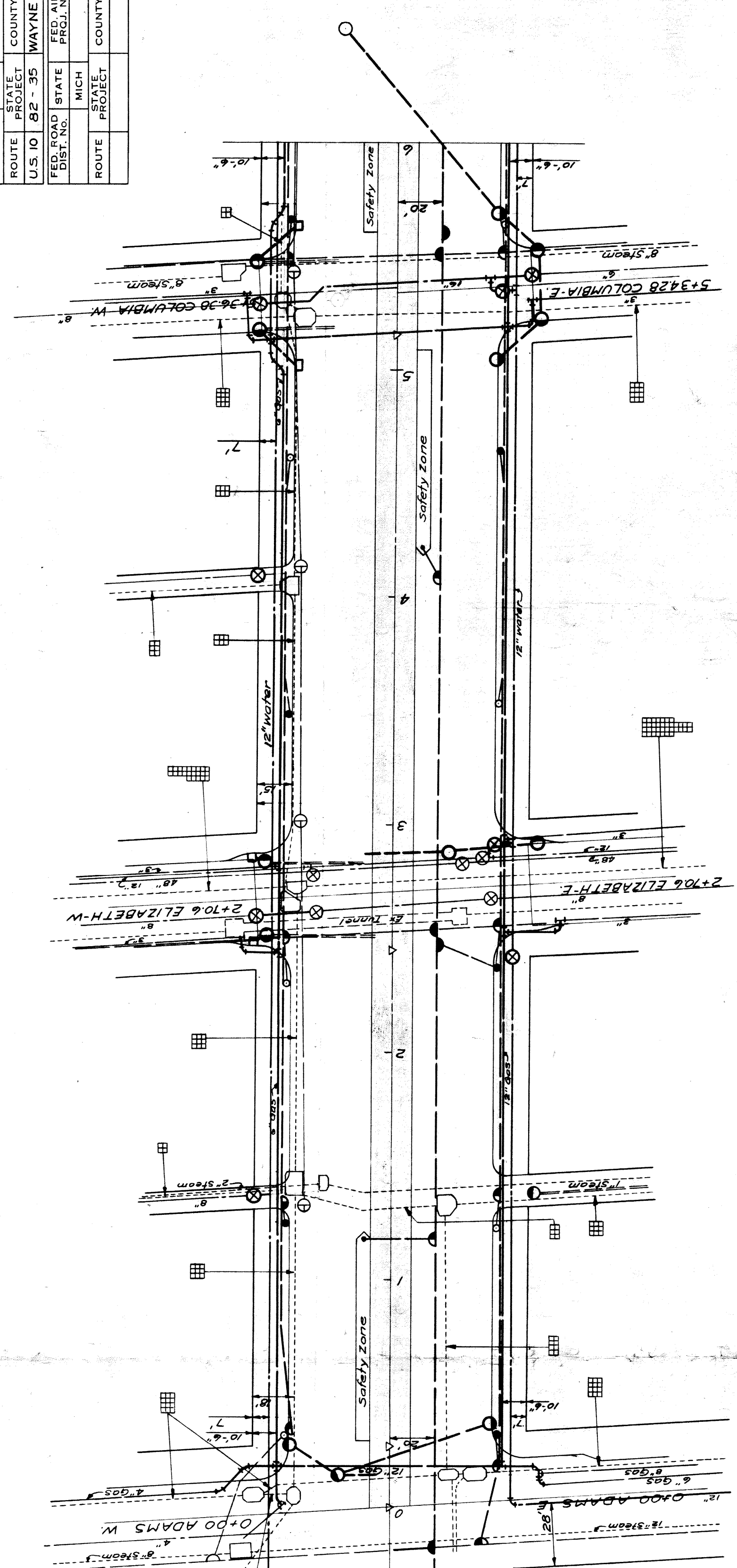
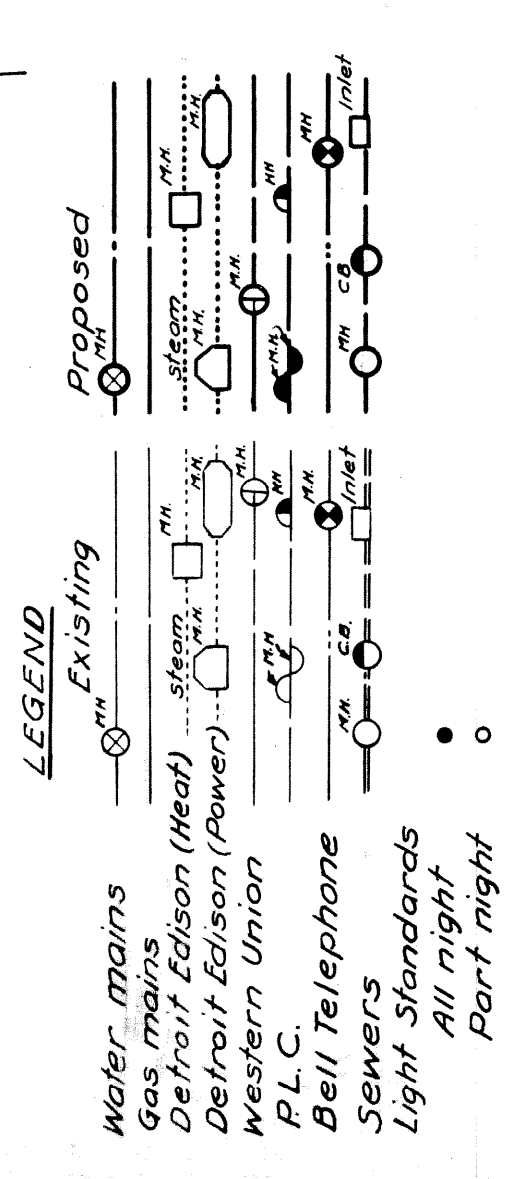
FRONT ELEVATION OF CURB BOX

NOTE: Bolt Curb Box to frame with three 5/8 x 2 1/2 Galvanized Machine Bolts. Adjust for height after forms for curb are in place.

| FED. ROAD DIST. NO. | STATE | N.R.P. PROJ. NO. | FISCAL YEAR | SHEET NO. | TOTAL SHEETS |
|---------------------|---------|------------------|-------------|-------------|--------------|
| 7 | MICH. | 226 C2 (1935) | | 12 | 12 |
| ROUTE | CITY | COUNTY | STATE | FISCAL YEAR | TWP |
| U.S. 10 | DETROIT | WAYNE | DETROIT | | |
| FED. ROAD DIST. NO. | STATE | N.R.P. PROJ. NO. | FISCAL YEAR | SHEET NO. | TOTAL SHEETS |
| | | | | | |
| ROUTE | CITY | COUNTY | STATE | FISCAL YEAR | TWP |
| | | | | | |

Grand Circus Park

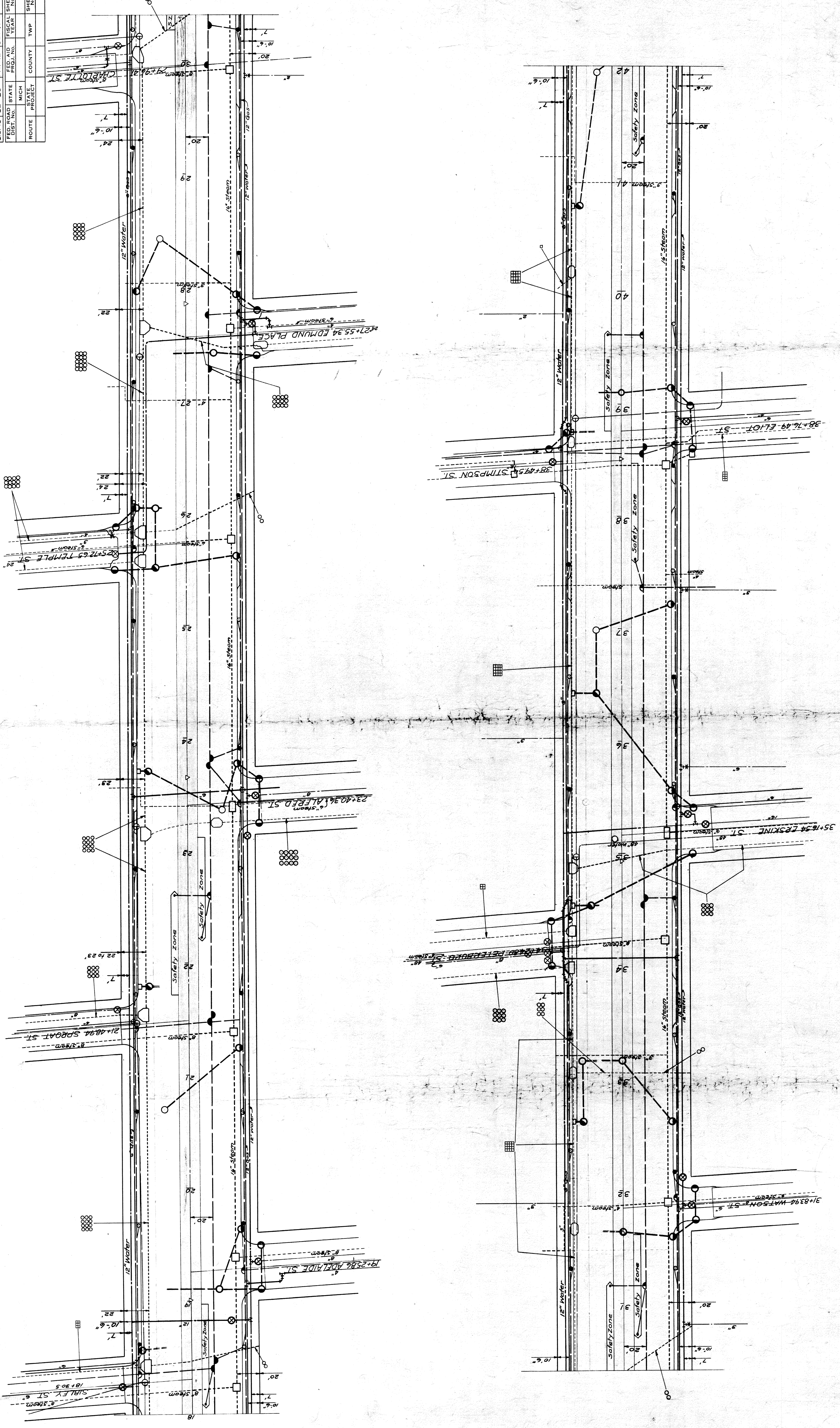
Grand Circus Park



Note
The Public Utilities Plans show location of the proposed Detroit Edison, Western Union, City Gas, Public Lighting Comm., Water Board and Pavement Drainage systems for Woodward Ave. (Including existing systems that are to be maintained.)

Pt. of Beginning
U.S. P.W. Highway Project
N.R.M. 258, Sec. C2 (1935)
Sta. 17+27.9

| | | | | | |
|---------------------|-------|-------------|-----------|-----------|--------------|
| FED. DIST. NO. | STATE | FISCAL YEAR | PROJ. NO. | SHEET NO. | TOTAL SHEETS |
| 7 | MICH. | 1933 | 25362 | 73 | 73 |
| ROUTE | STATE | COUNTY | CITY | SHEET NO. | TOTAL SHEETS |
| U.S. 10 | MI | WAYNE | DETROIT | 73 | 73 |
| FED. ROAD DIST. NO. | STATE | FISCAL YEAR | PROJ. NO. | SHEET NO. | TOTAL SHEETS |
| 10 | MI | 1933 | 25362 | 73 | 73 |
| ROUTE | STATE | COUNTY | TWP | SHEET NO. | TOTAL SHEETS |
| | | | | | |



| | | | | | |
|---------------------|---------|--------------------|-------------|-----------|--------------|
| FED. ROAD DIST. NO. | STATE | PROJ. NO. | FISCAL YEAR | SHEET NO. | TOTAL SHEETS |
| 7 | MICH. | 258C2 | (1935) | 14 | 14 |
| ROUTE | STATE | COUNTY | CITY | SHEET NO. | TOTAL SHEETS |
| U.S. 10 | 62 - 35 | WAYNE | DETROIT | 14 | 14 |
| FED. ROAD DIST. NO. | STATE | FED. AID PROJ. NO. | FISCAL YEAR | SHEET NO. | TOTAL SHEETS |
| | MICH. | | | | |
| ROUTE | STATE | COUNTY | TWP. | SHEET NO. | TOTAL SHEETS |
| | | | | | |

