

MICHIGAN
STATE HIGHWAY DEPARTMENT
MURRAY D. VAN WAGONER
COMMISSIONER

PLAN AND PROFILE OF PROPOSED
WORKS PROJECT NO. NRM 258 SEC. B
DETROIT PONTIAC ROAD
WAYNE COUNTY
CITY OF DETROIT

SCALES
TITLE SHEET 1"=0.3 MI.
PLAN 1"=40 FT.
PROFILE 1"=40 FT.
1"=40 FT.
1"=4 FT.

INDEX OF SHEETS
Sheet No 1 - Title Sheet
2 - Typical Cross-Sections
3 - Special Provisions
4 - Survey Line Witnesses
5-108 - Plan & Profile
9 - Special Details
10 to 13 - Quantities

STANDARD PLANS
E-4-A-9A
E-4-A-10
E-4-A-16
E-4-A-18C
E-4-A-21A
E-4-A-66
E-4-A-91A
E-4-A-92A
E-7-C-11H

PLAN & PROFILE LEGEND

- In place
- Sewer M.H. ○
 - Sewer C.B. □
 - D.E. ○
 - P.L.C. ○
 - C.G. ○
 - W.U. ○
 - Water Cap ○
 - Mich Bell ○
 - Postal Tel. ○
 - Fire Dept. ○
 - Water gate M.H. ○
 - Police Call ○
 - Fire Call ○
 - C.B. in D.S.R. ○
 - Light Post ○
 - D.S.R. Poles ○
 - Mail Box ○
 - Coal Chute ○
 - D.E. Pole ○
 - Signal Light ○
 - Water Meter ○
 - Gas Cap ○
 - Gas Drip ○
- Proposed
- Sewer M.H. ○
 - Catch Basin ○
 - Storm Sewer ○

TITLE SHEET LEGEND

- PROPOSED PROJECT - - - - -
- T.L. OR F.A. PAVED - - - - -
- T.L. OR F.A. IMPROVED, NOT PAVED - - - - -
- T.L. OR F.A. UNIMPROVED - - - - -
- NON T.L. OR F.A. PAVED - - - - -
- NON T.L. OR F.A. IMPROVED, NOT PAVED - - - - -
- NON T.L. OR F.A. UNIMPROVED - - - - -
- COUNTY LINE - - - - -
- CITY OR VILLAGE - - - - -
- TOWNSHIP LINE - - - - -
- SECTION LINE - - - - -
- RAILROADS - - - - -

The improvements covered by these plans shall be done in accordance with the Michigan State Highway Department's 1926 Standard Road and Bridge Specifications and Supplemental Specifications for the following:

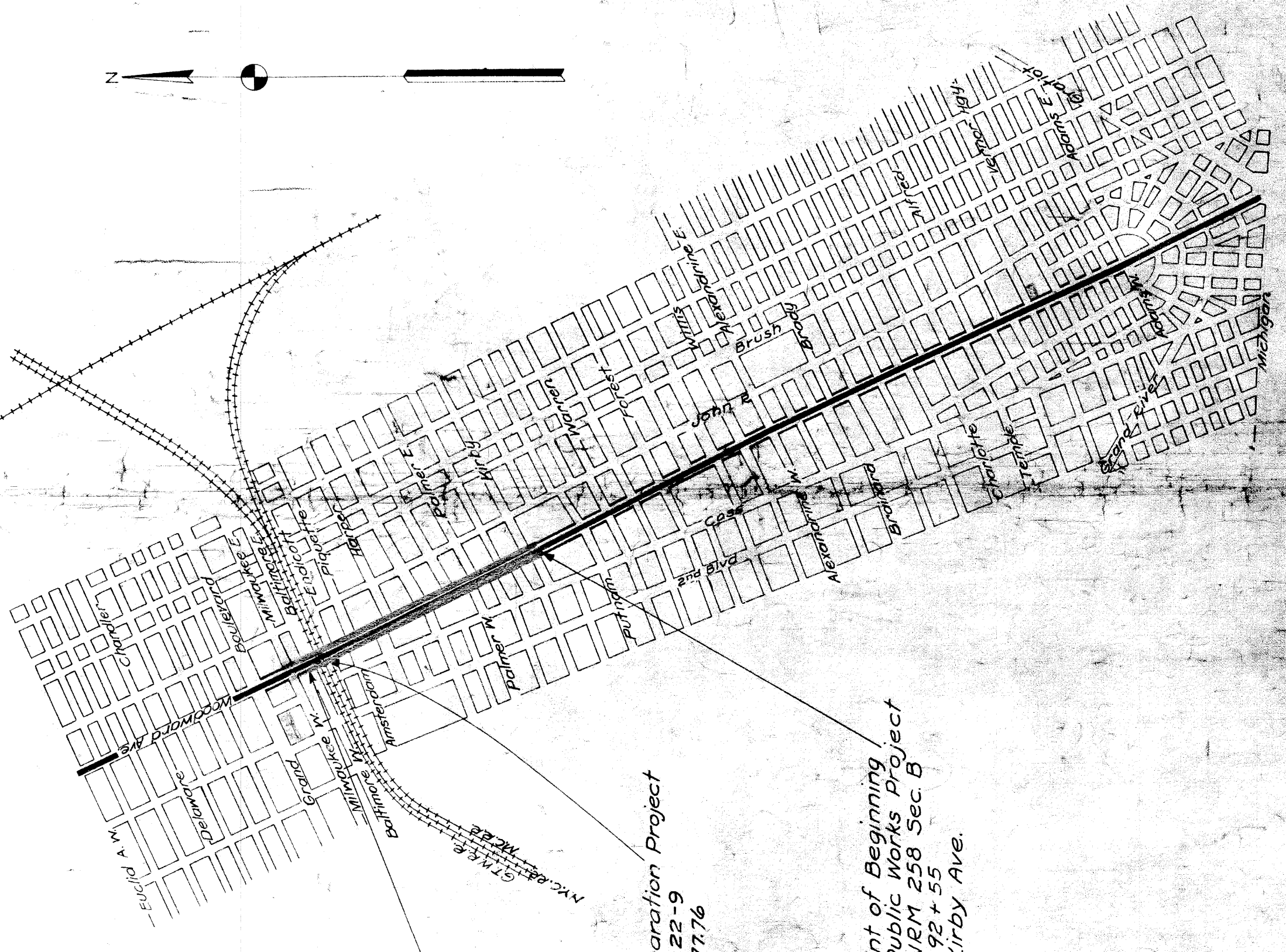
- Freight Rates on Construction Materials.
- Concrete Base Course.
- Cement Furnished by Contractor for use in Concrete Base Course.
- Portland Cement Specifications.
- Coarse Aggregates for use in Concrete Pavements.
- Sheet Asphalt Surface Course.
- Maintaining Traffic.
- Fine Grading.
- Vitriolized Brick Surface Course.
- Miscellaneous Items.

NRM 82-35 C1 Covers
Concrete Base From
Sta. 92+55 to Sta. 128+47.67

NRM 82-35 C2 Covers
Asphalt and Brick Surfacing from
Sta. 92+55 to Sta. 128+47.67

NRM 82-35 C3 Covers
Miscellaneous Work from
Sta. 92+55 to Sta. 128+47.67

FED. ROAD DIST. NO.	STATE	PROJ. NO.	SECTION	SHEET NO.	TOTAL SHEETS
7	MICH.	258 B			
US 10	82-35	Wayne	Detroit	1	



CONTRACT FOR Grading - Drainage - Surfacing NRM 258 B

CHECKED: [Signature] CHIEF DRAFTSMAN
CORRECT: [Signature] ACT. BRIDGE ENGR. MUNICIPAL ENGR.
RECOMMENDED FOR APPROVAL: [Signature] ENGINEER OF PLANS
ROAD ENGINEER: [Signature] 1-18-34 DATE

APPROVED: MURRAY D. VAN WAGONER, STATE HIGHWAY COMMISSIONER
BY: [Signature] DEPUTY AND CHIEF ENGINEER 1-18-34 DATE

RECOMMENDED FOR APPROVAL: [Signature] DISTRICT ENGINEER
RECOMMENDED FOR APPROVAL: [Signature] CHIEF ENGINEER
APPROVED: [Signature] CHIEF

SECTION B - KIRBY TO BALTIMORE

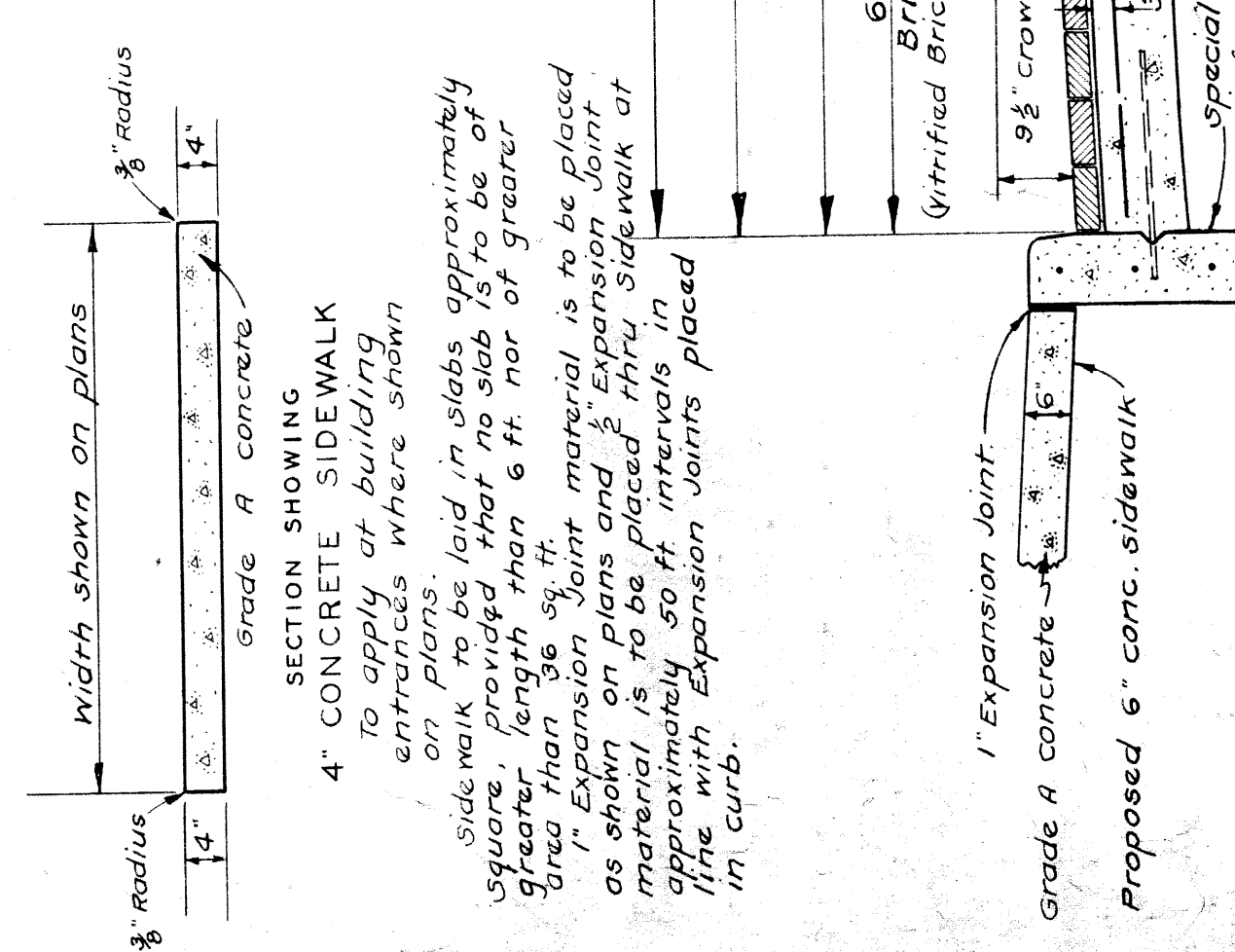
Approved 1/15/10
Kirby - Baltimore

APPROVED FOR
CITY OF DETROIT

Jan 15, 1934

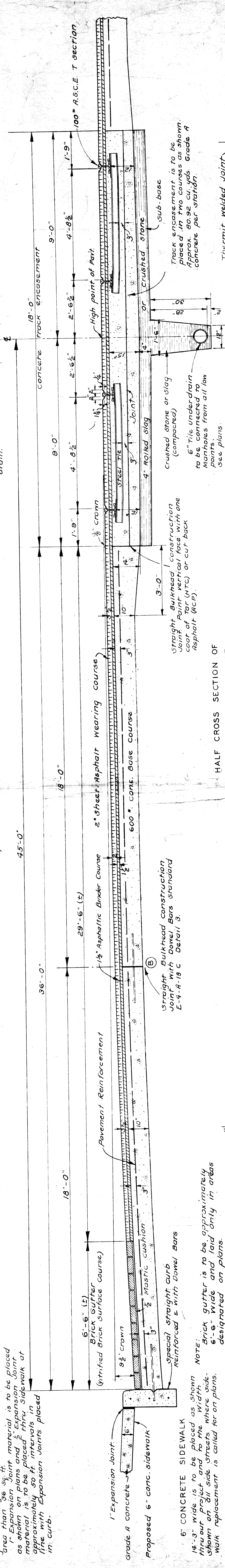
TYPICAL CROSS-SECTIONS

FILE NO.	258-B
PROJECT	WAYNE DETROIT
ROUTE	U.S. 10 82-35
SHEET NO.	2
TOTAL SHEETS	2

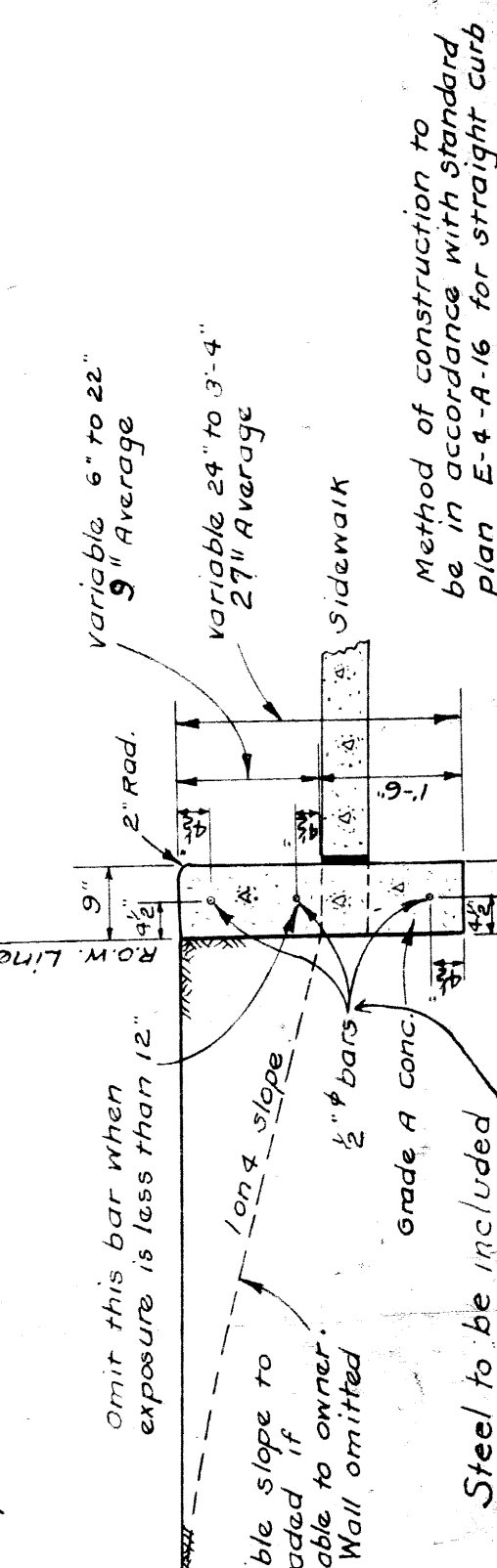


Note: The transverse joint is to be formed immediately following the finishing machine and shall be at right angles to the center line of the street. After the concrete has hardened sufficiently, the rounded to 1/4" and the edges to be rounded to 1/4" to 1/2" radii. No filler is to be placed in this joint.

DETAIL SHOWING FOR WEARNESS PLANES
Note: These joints to be placed in concrete base only at intervals of 40 ft. equal intervals between stresses, as far as feasible.

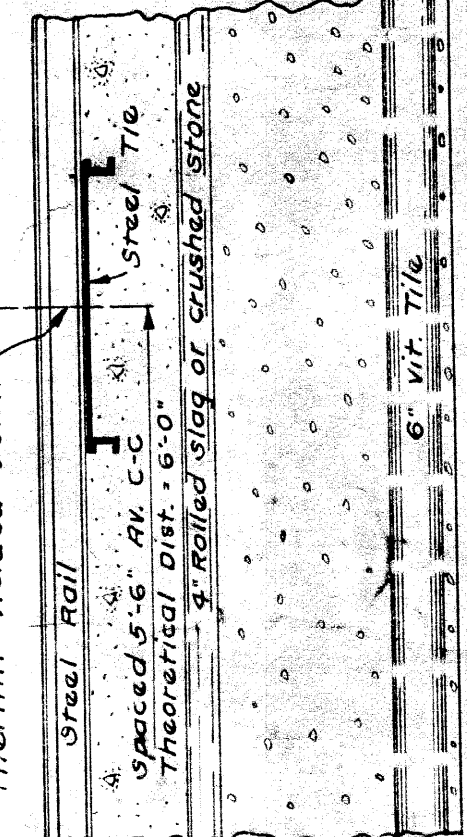
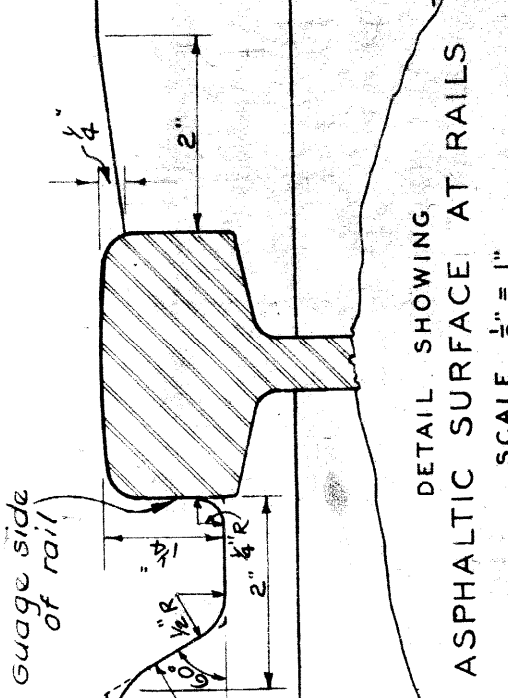


NOTE: Brick gutter is to be approximately 6'-6" wide and laid only in areas designated on plans.

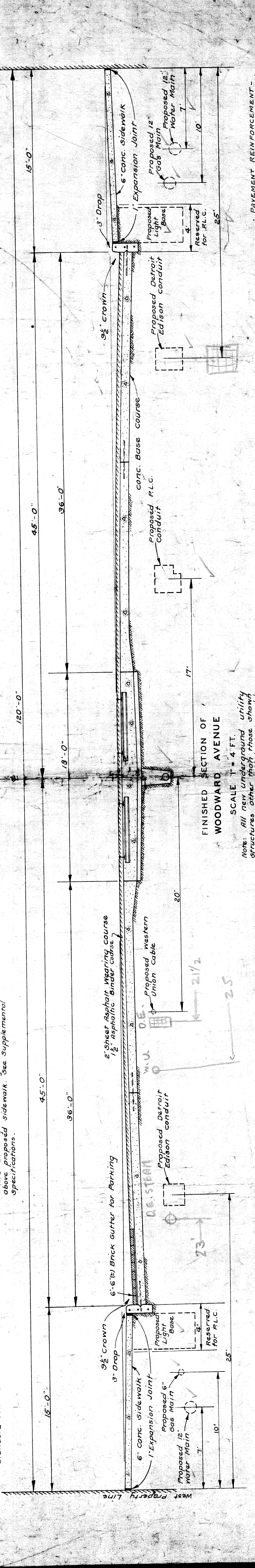


Method of construction to be in accordance with standard plan E-4-A-16 for straight curb.

Note: The grades on each side of the rails are to be formed by placing, just prior to the final rolling, properly shaped wood or metal strips on top of the asphalt and pressing them into the asphalt by rolling to fill the groove. The top of the rails is to be removed to the outer corner of the groove so that the radius is approximately 1" radius.



SPECIAL T-SHAPE CURB
Method of construction is to be in accordance with standard plan E-4-A-16.



Note: All new underground utility structures other than those shown on these plans shall be approved by the Engineer before being placed.

PAVEMENT REINFORCEMENT
The concrete base course is to be reinforced thru-out with Mesh or Bar Mat Reinforcement. 5.4 lbs per sq. yd. Place Reinforcement according to standard E-4-A-21A. Expansion joints to be placed 3' below top of the concrete base course.

Yellow shows location of utilities as shown on D.E. Plan U-4-3-228

SUPPLEMENTAL SPECIFICATIONS

The Supplemental Specifications are included in the proposal.

NOTES

ADJUSTING PAVEMENT REMOVAL AT INTERSECTIONS

Where necessary to connect to existing surfacing at street intersections the Engineer will carefully study each location and so adjust the amount and location of pavement removal and replacement as to secure the most satisfactory connections, considering condition of surface, grades, and finished appearance.

PUBLIC UTILITIES

The following public utilities are represented on this project:

- The Detroit Edison Co.
- Detroit Public Lighting Commission
- Detroit City Gas Co.
- Western Union Telegraph Co.
- Detroit Telephone Co.
- Detroit Department of Water Supply
- Detroit Fire Department (Signal Dept.)
- Detroit Police Department (Water Dept.)
- Detroit Police Department
- Detroit Street Railway Commission
- United States Post Office

NOTES APPLICABLE TO ALL SHEETS

MANHOLE AND CATCH BASINS

All manhole and catch basin covers for in plans are to be constructed according to details shown on standard plans E-4-1, 1a, and E-4-2-1-2a unless otherwise indicated.

Manhole and catch basin covers conforming to city of Detroit standards and approved by the Engineer may be substituted for the State Highway Department standard covers called for on these plans.

EXPANSION JOINTS

One-half inch expansion joints are to be placed around all catch basins and other structures in the concrete base, excepting manholes and manhole boxes, according to standard Plan E-7-1-11a.

One-half inch expansion joints are to be placed thru the curb at the string of street returns and at fifty foot intervals (as near as feasible) between.

One-half inch expansion joints are to be placed thru the proposed sidewalk in line with all expansion joints in the curb except that 1" expansion joints are to be placed where shown on plans.

GRADE FOR INTERSECTIONS

Intersections are to be considered as complete units and the grades must be established before their construction is started according to Standard Plan E-2-2-20a.

FED. ROAD DIST. NO.	STATE	FISCAL YEAR	SHEET NO.	TOTAL SHEETS
7	MICH.	256-5	3	3
ROUTE	PROJECT	COUNTY	CITY	TOTAL SHEETS
U.S. 101	62-35	WAYNE	DETROIT	3

FED. ROAD DIST. NO.	STATE	FISCAL YEAR	SHEET NO.	TOTAL SHEETS
	MICH.			
ROUTE	PROJECT	COUNTY	TWP.	TOTAL SHEETS

SUMMARY OF QUANTITIES

LENGTH 0.280 MILES

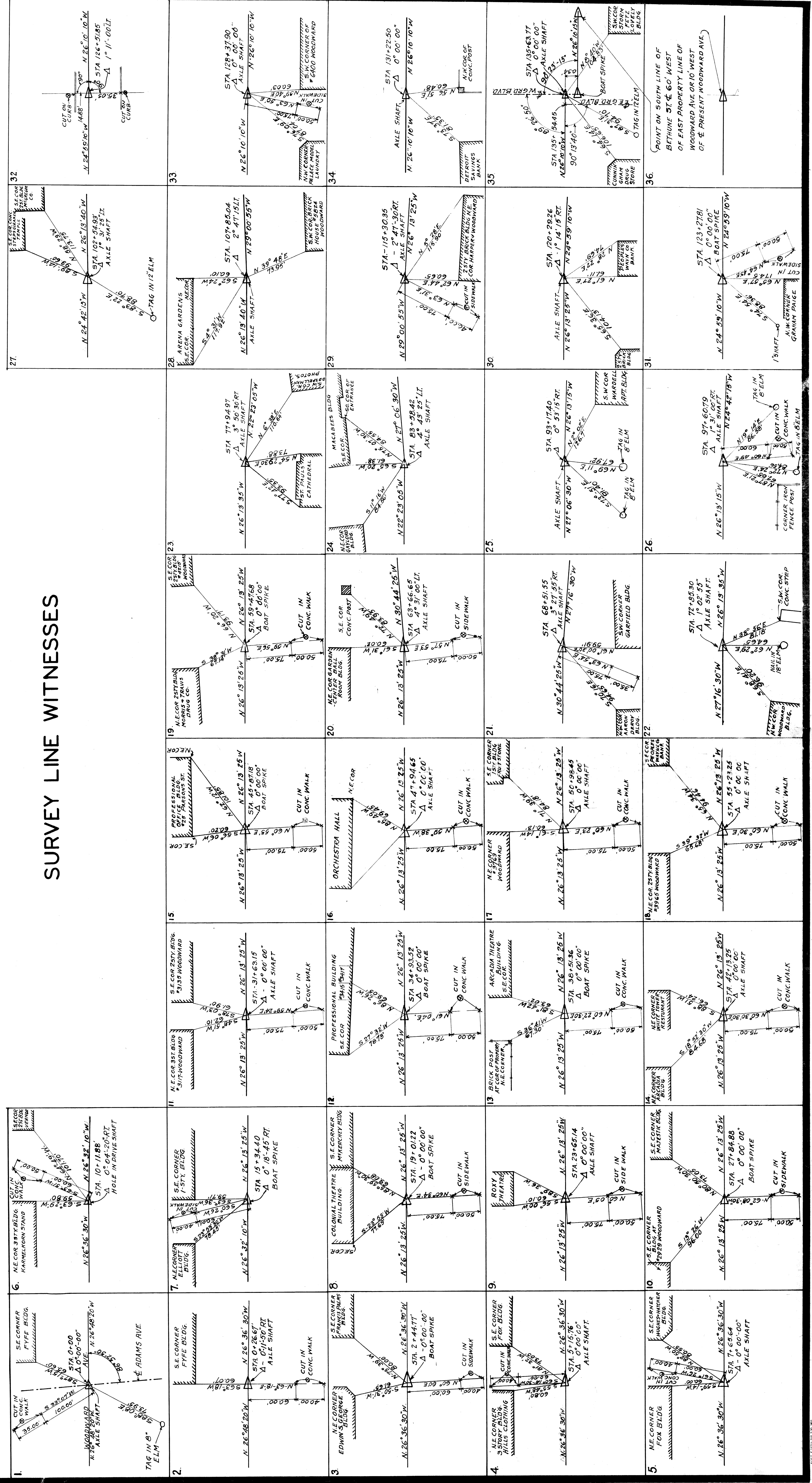
Gen. 1

13,735	Cu Yd	Earth Excavation
13,222	Sq Yd	Removing Old Sidewalk
3,330	Sq Yd	Removing Old Track Exp. 12" width
1,220	"	" " " " 11 1/2" width
1,220	"	" " " " 10" width
2,150	Lin Ft	Removing Old Concrete Walls
12	"	12" storm sewer
12	"	12" " " "
12	"	24" " " "
1,490	Cu Yd	Sand Backfill
1,790	Lin Ft	6" Tile Underdrain
1,120	Cu Yd	Slag or Crushed Stone Sub-base
22	Each	Manhole, 48"
55	"	Manhole, 36"
55	"	Manhole, 30"
55	"	Manhole, 24"
55	"	Manhole, 18"
36,000	Sq Yd	Concrete Base, 10" 12" 10"
3,000	"	Pavement Reinforcement
6,750	Lin Ft	Special Driveway Returns
6,750	"	Special Driveway Curb
2,250	Cu Yd	Track Encasement, Grade & Concrete
1,125	Sq Ft	4" Concrete Sidewalk
1,125	"	5" " " "
1,125	"	6" " " "
1	Each	Grade, Concrete Retaining Walls
1	"	Recessing Manhole for Sewer Manhole

Gen. 2

3,210	Sq Yd	Vitrified Brick surface Course
3,210	"	1 1/2" Asphaltic Binder Course
3,210	"	2" Sheet Asphalt wearing Course

SURVEY LINE WITNESSES



Drawn & Inked by Ingerson
 Checked by Ingerson

PROJ. NO.	STATE	COUNTY	CITY	TOTAL SHEETS
7	MICH.	WAYNE	DETROIT	5
ROUTE	STATE	COUNTY	CITY	SHEET NO.
US-10	22-55	WAYNE	DETROIT	5

S.M. No 28 Elev. 636.661
 on top step at N. end of
 Entrance to 550 Woodward
 105.0 RT Sta. 99+38.0

Curve Data
 Δ = 131°R
 D = 1700'
 T = 584'
 L = 1183.99'
 E = 572.99'
 PC = 92+58.23
 PT = 93+17.40
 PI = 92+87.815

NOTE: Place special driveway returns at locations and of length as shown

NOTE: See typical inter-section layout on sheet #9

NOTE: Place M.H. Det. #1 over Existing 12" sewer. Est. 35 cu. yd. Add 1 cu. yd.

NOTE: Remove conc. wall over Existing 12" sewer. Est. 35 cu. yd. Add 1 cu. yd.

NOTE: Place CB Det. #2 with trap over Existing 12" sewer. Add 6" of 12" S.S.

NOTE: Place CB Det. #2 with trap over Existing 12" sewer. Add 6" of 12" S.S.

NOTE: Place M.H. Det. #1 over Existing 12" sewer. Est. 35 cu. yd. Add 1 cu. yd.

NOTE: Place CB Det. #2 with trap over Existing 12" sewer. Add 6" of 12" S.S.

NOTE: Place M.H. Det. #1 over Existing 12" sewer. Est. 35 cu. yd. Add 1 cu. yd.

NOTE: Place CB Det. #2 with trap over Existing 12" sewer. Add 6" of 12" S.S.

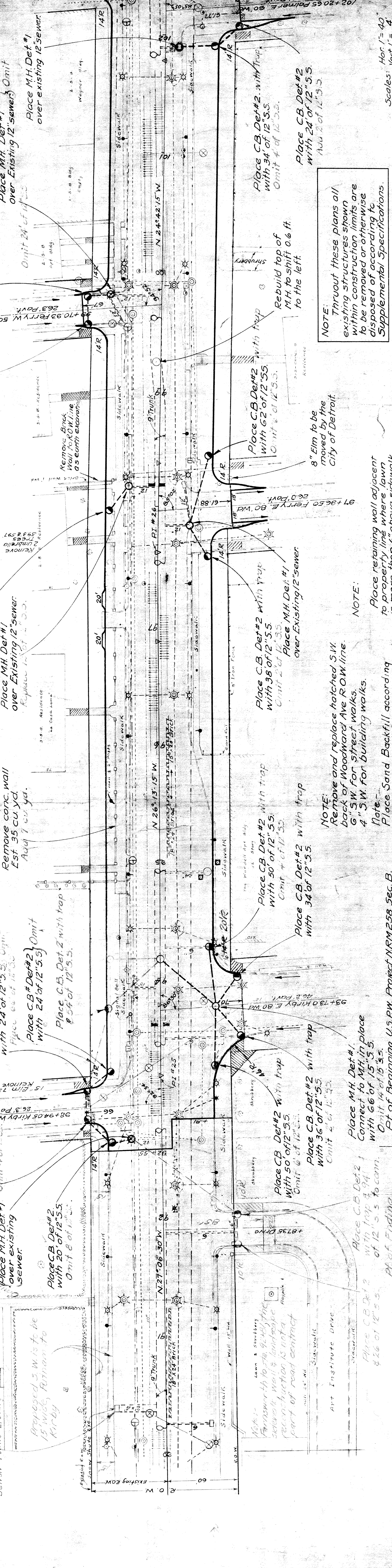
NOTE: Place M.H. Det. #1 over Existing 12" sewer. Est. 35 cu. yd. Add 1 cu. yd.

NOTE: Place CB Det. #2 with trap over Existing 12" sewer. Add 6" of 12" S.S.

NOTE: Place M.H. Det. #1 over Existing 12" sewer. Est. 35 cu. yd. Add 1 cu. yd.

NOTE: Place CB Det. #2 with trap over Existing 12" sewer. Add 6" of 12" S.S.

NOTE: Place M.H. Det. #1 over Existing 12" sewer. Est. 35 cu. yd. Add 1 cu. yd.

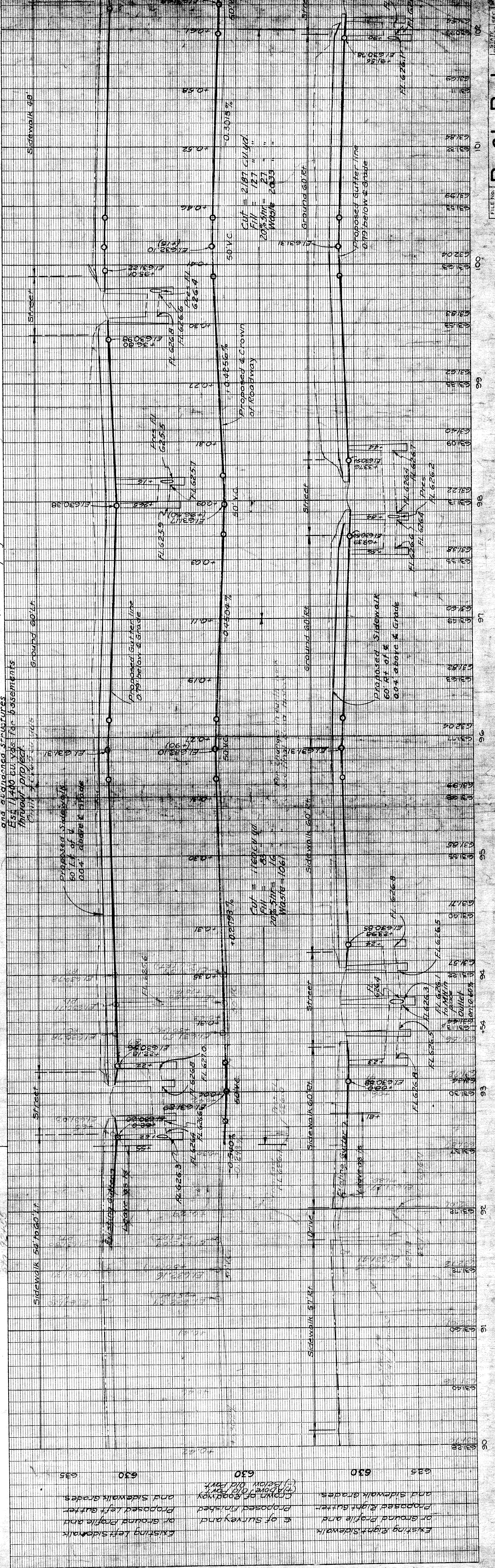


NOTE: Remove and replace hatched SW back of Woodward Ave ROW line. 6" SW for street walks. 4" SW for building walks.

NOTE: Place Sand Backfill according to Supplemental Specifications. Est. 900 cu. yds. Grade A Concrete Thruout project.

NOTE: 8" Elm to be moved by the City of Detroit.

NOTE: Place retaining wall adjacent to property line where lawn is more than 6" above sidewalk. Est. 900 cu. yds. Grade A Concrete Thruout project.



OPERATION	DATE
BLANKET - ROOF	1-34
BLANKET - LAMP	1-34
TRACE	
FINAL ROW CHECK	
PRELIMINARY CHECK	
OPERATION	DATE
BLANKET - ROOF	1-34
BLANKET - LAMP	1-34
TRACE	
FINAL ROW CHECK	
PRELIMINARY CHECK	

OPERATION	DATE
BLANKET - ROOF	1-34
BLANKET - LAMP	1-34
TRACE	
FINAL ROW CHECK	
PRELIMINARY CHECK	
OPERATION	DATE
BLANKET - ROOF	1-34
BLANKET - LAMP	1-34
TRACE	
FINAL ROW CHECK	
PRELIMINARY CHECK	

FED. ROAD DIST. NO.	STATE	PROJ. NO.	FISCAL YEAR	SHEET NO.	TOTAL SHEETS
7	MICH.	250-B	1934	6	6
ROUTE	COUNTY	CITY	WYANE	DETROIT	
U.S. 10	82-35	WYANE	DETROIT		

AM. No. 31 Elev. 634.053
 Cut on N end step of
 "Our Lady of the Rosary Church"
 on N.E. Cor. Woodward & Medbury
 66.5' let of Sta. 111+50.0

Place C.B. Det. #2
 with 24' of 12" S.S.
 to North
 Add 2' of 12" S.S.
 Place C.B. Det. #2
 with 38' of 12" S.S.
 Omit 36' of 12" S.S.
 Place M.H. Det. #1
 Over existing 12"
 Sewer

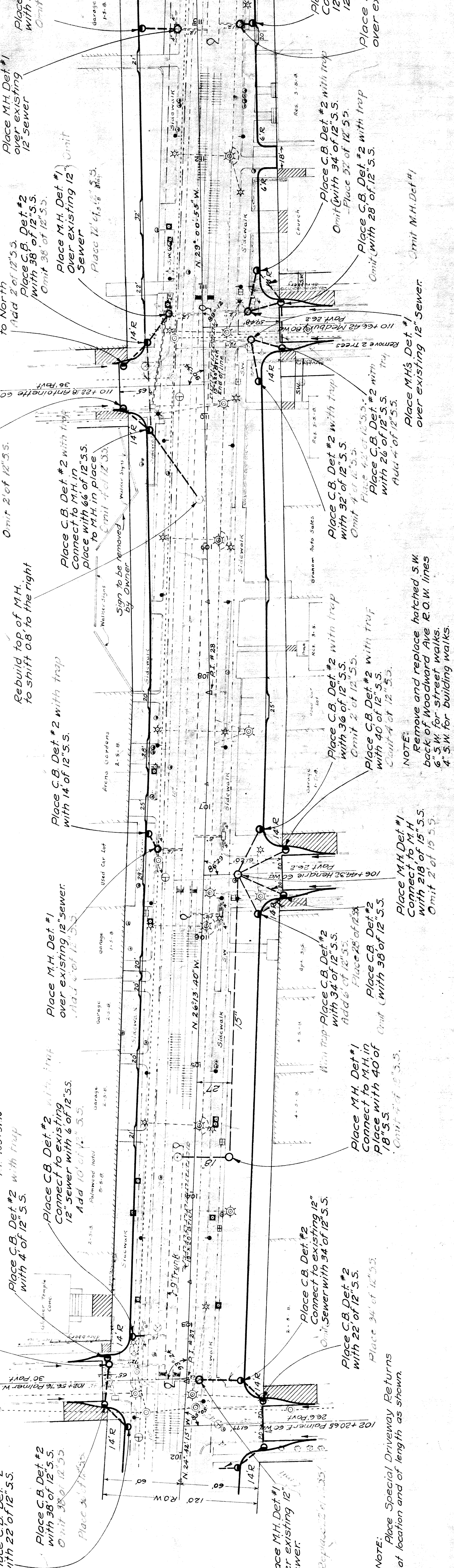
Place C.B. Det. #2
 with 24' of 12" S.S.
 Omit 2' of 12" S.S.
 Place C.B. Det. #2 with trap
 Connect to M.H. in
 Place with 66' of 12" S.S.
 to M.H. in place
 Add 4' of 12" S.S.

Place C.B. Det. #2 with trap
 with 14' of 12" S.S.
 Rebuild top of M.H.
 to shift 0.8' to the right

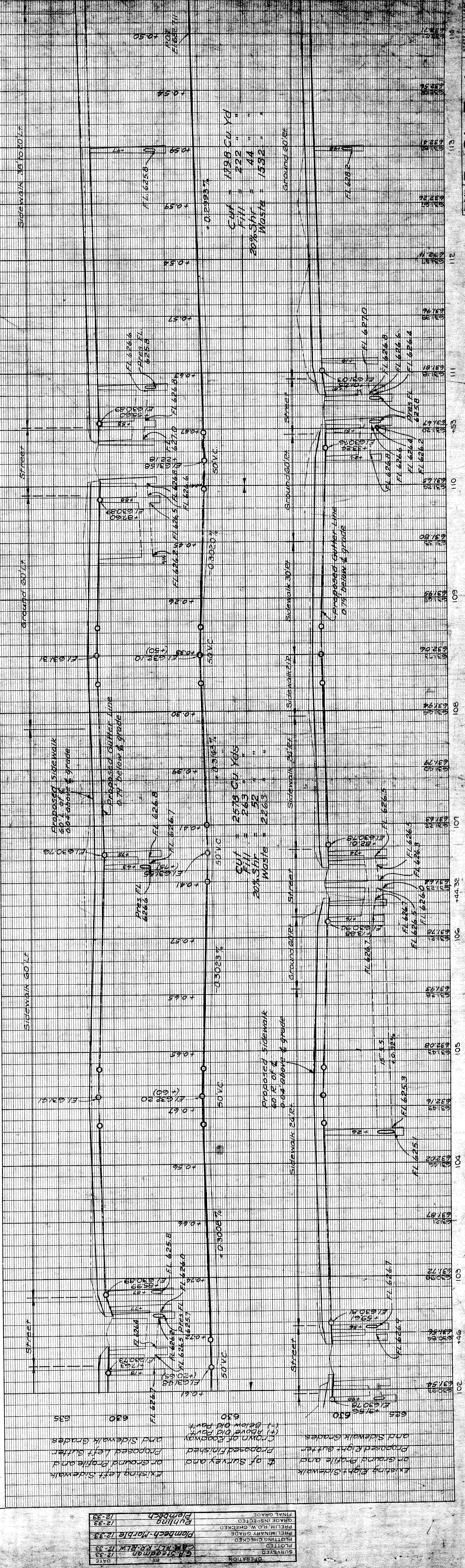
Place M.H. Det. #1
 over existing 12" sewer.
 Add 10' of 12" S.S.

Place C.B. Det. #2
 with 4' of 12" S.S.
 Place C.B. Det. #2
 with 4' of 12" S.S.
 Place M.H. Det. #1
 over existing 12" sewer

Place C.B. Det. #2
 with 22' of 12" S.S.
 Place C.B. Det. #2
 with 38' of 12" S.S.
 Omit 38' of 12" S.S.



NOTE: Place Special Driveway Returns at location and of length as shown



OPERATION	DATE
GRADED	12-33
PLOTTED	12-33
PLOTTING CHECKED	12-33
PRELIMINARY GRADE	12-33
PRELIMINARY CHECKED	12-33
FINAL GRADE	12-33
FINAL CHECKED	12-33
OPERATION	DATE
GRADED	12-33
PLOTTED	12-33
PLOTTING CHECKED	12-33
PRELIMINARY GRADE	12-33
PRELIMINARY CHECKED	12-33
FINAL GRADE	12-33
FINAL CHECKED	12-33

Scale: Hor. 1" = 40'
 Vert. 1" = 4'

FED. ROAD DIST. NO.	STATE	PROJ. NO.	SHEET NO.	TOTAL SHEETS
7	MI.	258-B	7	7
ROUTE	CITY	COUNTY		
82-35	WAYNE	DETRIT		
US-C				

B.M. 1934 Elev. 637.775
Top of 1" L driven at N.W. Cor.
of State Highway field office
78.5' E. of Sta. 124+45.0

Datum Equation
Elevations on bridge
plans are 479.76 feet
lower than those
shown on these road
plans.

Curve Data
D = 164.5' R
L = 192.82'
E = 1.050'
P.T. = 120+53.86
P.T. = 121+11.60

B.M. 1933 Elev. 633.213
* on W. Table of S.W. Cor. of Peoples
Wayne Co. Bank on N.E. Cor. of Woodward
& Piquette. 611' E. of Sta. 120+29

NOTE:
Place Special Driveway Returns
at location and of length as shown.

Rebuild top of M.H. for
a Snow Manhole.
See detail on sheet #9.

B.M. 1932 Elev. 633.998
* on W. Table 35' N. of S.W. Cor. of
Slag on N.E. Cor. of Woodward & Harper
608' E. of Sta. 115+64.5

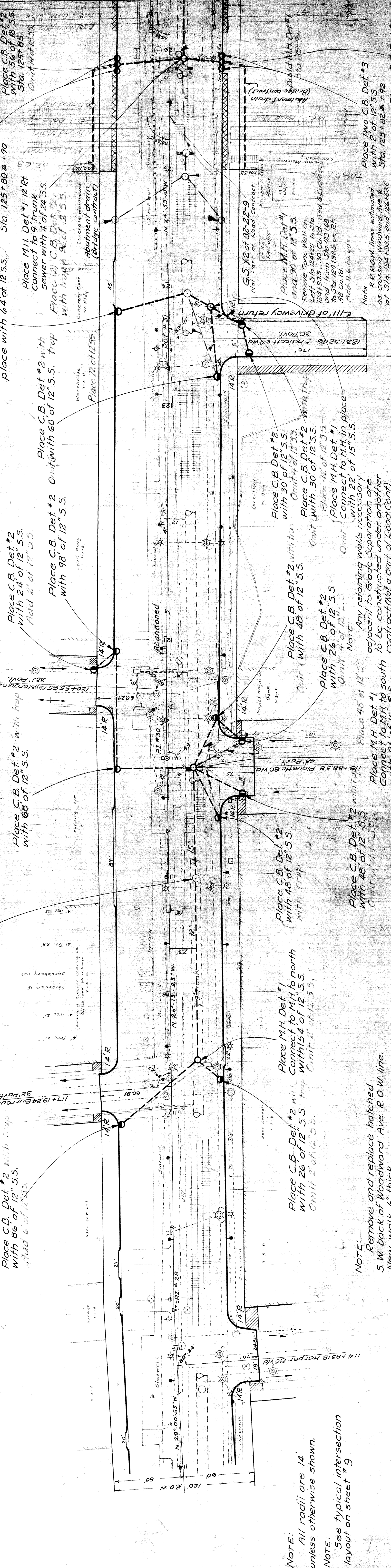
NOTE:
All radii are 14'
unless otherwise shown.

NOTE:
See typical intersection
layout on sheet #9

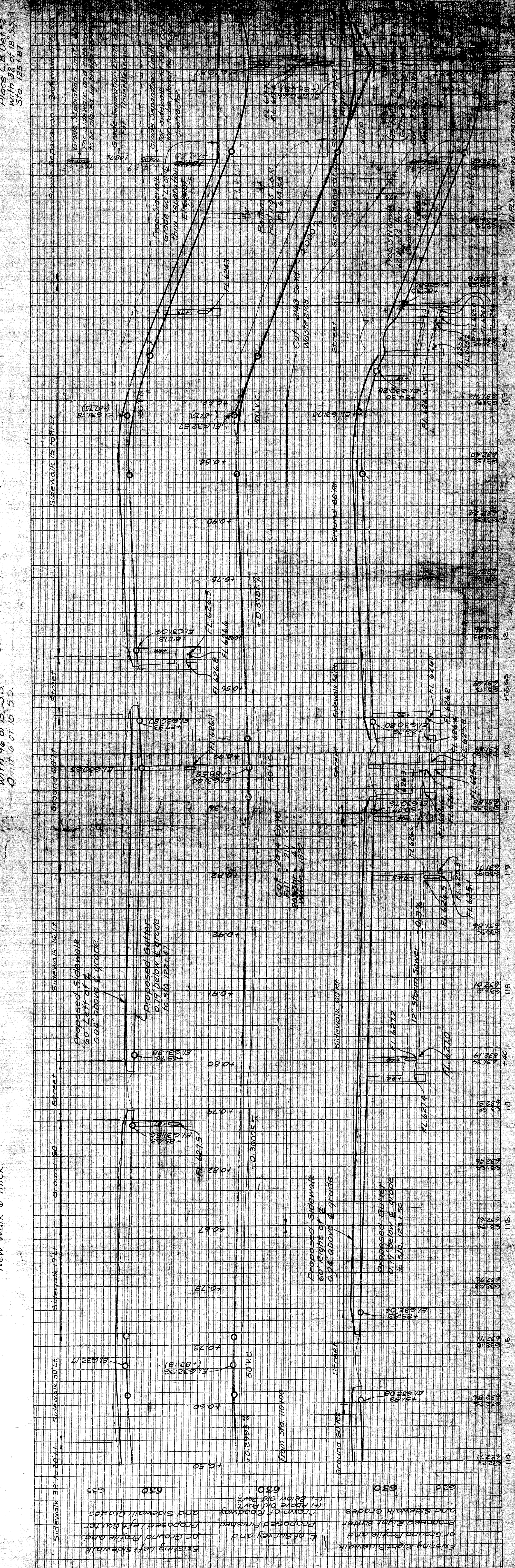
NOTE:
Remove and replace hatched
S.W. back of Woodward Ave. R.O.W. line.
New walk 6" thick.

NOTE:
Proposed gutter
0.75' below & grade
to 5 ft. 123+50

NOTE:
Proposed gutter
0.75' below & grade
to 5 ft. 123+50



OPERATION	BY	DATE
PLAN
QUANTITIES
DRINKING WATER
SEWER
STORM
PLUMBING
MECHANICAL
ELECTRICAL
PAINTING
CONCRETE
IRONWORK
STEELWORK
WOODWORK
GLASS
PAINT
ROOFING
MECHANICAL
ELECTRICAL
PLUMBING
CONCRETE
IRONWORK
STEELWORK
WOODWORK
GLASS
PAINT
ROOFING



OPERATION	BY	DATE
PLAN
QUANTITIES
DRINKING WATER
SEWER
STORM
PLUMBING
MECHANICAL
ELECTRICAL
PAINTING
CONCRETE
IRONWORK
STEELWORK
WOODWORK
GLASS
PAINT
ROOFING

R-21-B-1
 ALL P.L.S. SHOWN AS CORRESPONDING TO THE
 PLAN

FED. ROAD DIST. NO.	STATE	PROJ. NO.	FISCAL YEAR	SHEET NO.	TOTAL SHEETS
7	MICH.	253-B	1937	8	8
ROUTE	COUNTY	CITY	CITY	DATE	SCALE
US-10	WAYNE	DETROIT	DETROIT		

BM No 37 Elev. 33.265
 on Window Sill, E.E. of S.W. Cor. of Bldg. on N.E. Cor. of Woodward & Grand Blvd.
 G.A.T. Rt. of Sta. 127+49.0

BM No 36 Elev. 33.508
 on W. Table 5' S. of N.W. Cor. of Bldg. on N.E. Cor. of Woodward & Milwaukee
 G.O.O. Rt. of Sta. 130+62.5

BM No 35 Elev. 32.633
 on base at N. Side of ENT. to 6400 Woodward
 G.O.O. Rt. of Sta. 128+58.5

Curve Data
 Δ = 111° 14'
 D = 0.36
 L = 197.22
 E = 95.63
 R = 0.67
 AC = 125+53.23
 PT = 126+57.65
 P2 = 127+50.45

Place M.H. Det. #1
 to connect to 6" tile
 under-drain for
 D.S.R. tracks.
 Omit

Place C.B. Det. #2
 over existing 12" sewer
 Transition in
 D.S.R. tracks
 Omit

Place C.B. Det. #2
 with 40' of 12" S.S.
 Omit

Place C.B. Det. #2 in
 trench with 50' of
 12" S.S.
 Omit
 See typical
 intersection layout
 on sheet 9

Point of Ending
 Public Works Proj. No. NR 128-8 Sec. B
 Sta. 128+47.67

Place M.H. Det. #1 E. Rt.
 of Sta. 126+52 with 12"
 S.S. (48' to Lt. & 24' to Rt.)
 connections to abutment
 drains, and 60' of 12"
 S.S. to M.H. to south
 Omit - of 12" S.S.

Abutment drains
 (Bridge contract)

Abutment drains
 (Bridge contract)

Remove old concrete retaining wall
 Sta 126+52 to 127+77 left.
 Exc. as C&V. had 14' u.w. 1'.
 Sta 128+58 to 129+88 right.
 Exc. as C&V. had 12' u.w. 1'.
 Place concrete retaining wall
 Sta 122+63 to 123+12 left
 Sta 124+11 to 125+12 left
 Place concrete retaining wall
 Sta 126+52 to 127+77 left.
 Sta 128+58 to 129+88 right.
 Exc. as C&V. had 12' u.w. 1'.
 The Under-drain

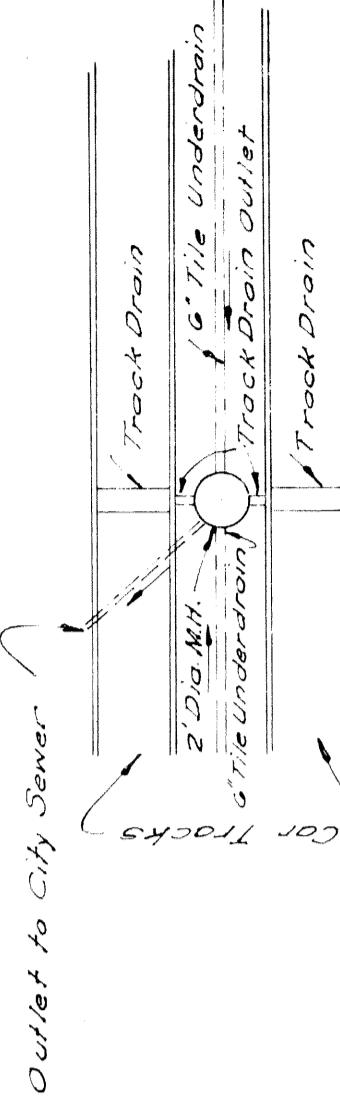
DRYING	1-34
BRIDGE	1-34
CONCRETE	1-34
REINFORCING	1-34
STEEL	1-34

SCALE
 HORIZ.
 VERT.

FISCAL YEAR	PROJ. NO.	STATE	TOTAL SHEETS
7	258-B	MICH.	9
ROUTE	CITY	COUNTY	SHEET NO.
U.S. 10	WAYNE	DETROIT	9
FISCAL YEAR	PROJ. NO.	STATE	TOTAL SHEETS
ROUTE	CITY	COUNTY	SHEET NO.

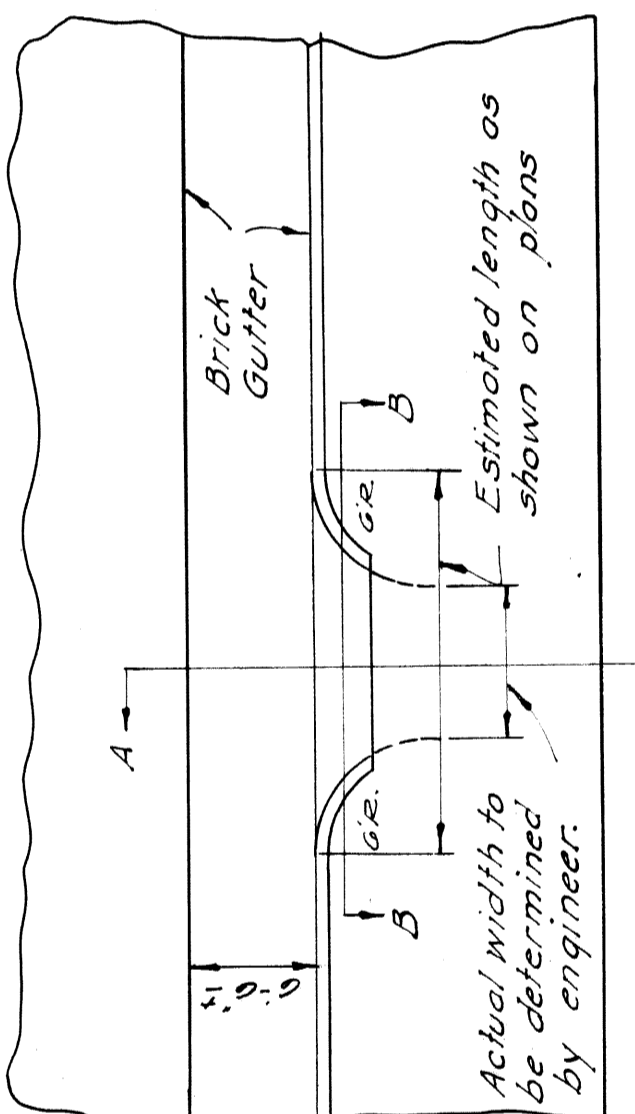
FISCAL YEAR	PROJ. NO.	STATE	TOTAL SHEETS
ROUTE	CITY	COUNTY	SHEET NO.

6" Tile Underdrain to be placed by Road Contractor. Track Drains and Drain Outlets, Manhole and Outlet to City Sewer System to be placed by the D.S.R. Commission.

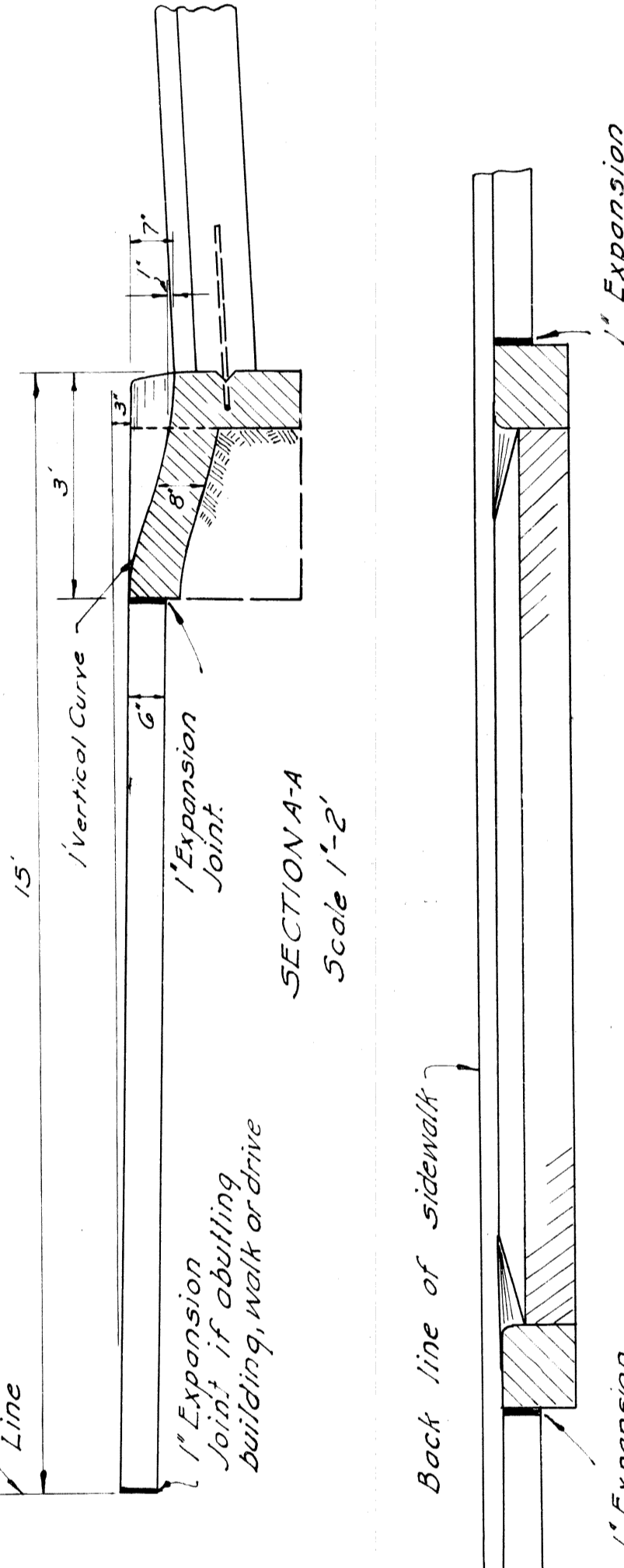


SKETCH SHOWING DRAIN LAYOUT FOR D.S.R. TRACKS.

NOTE: Construction to be in accordance with methods outlined on Std. Plan E-4-A-16 0.105 Cu Yd. Grade A Concrete per lin. foot of return.



PLAN Scale - 1"-10'

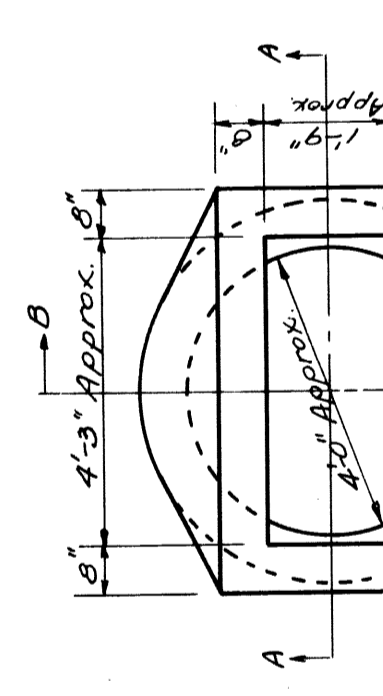


SECTION A-A Scale 1"-2'

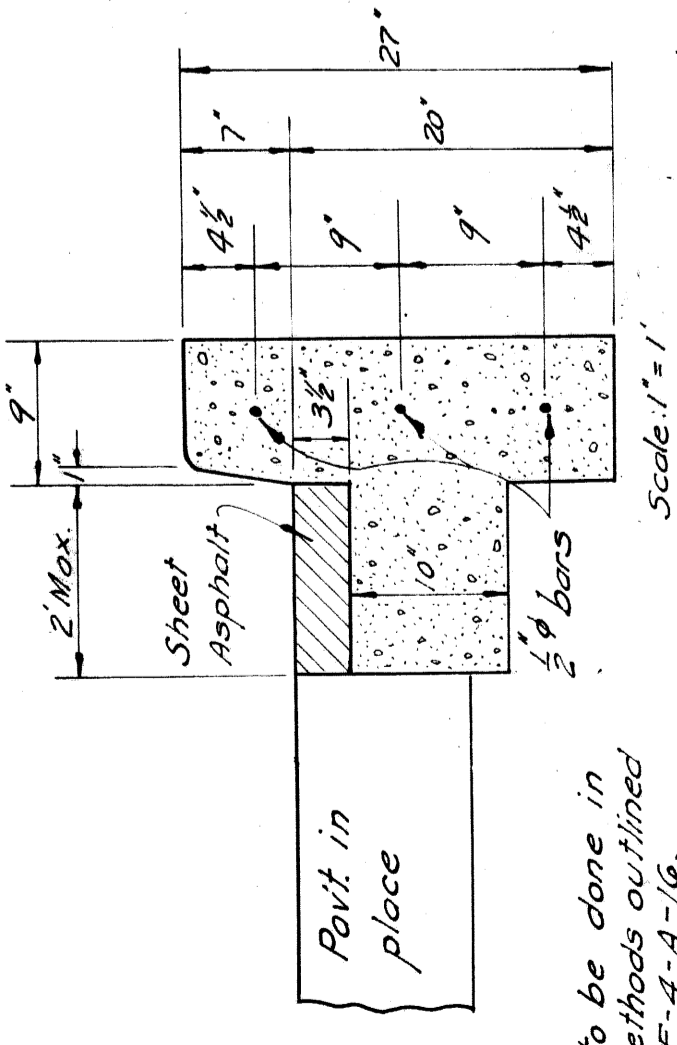
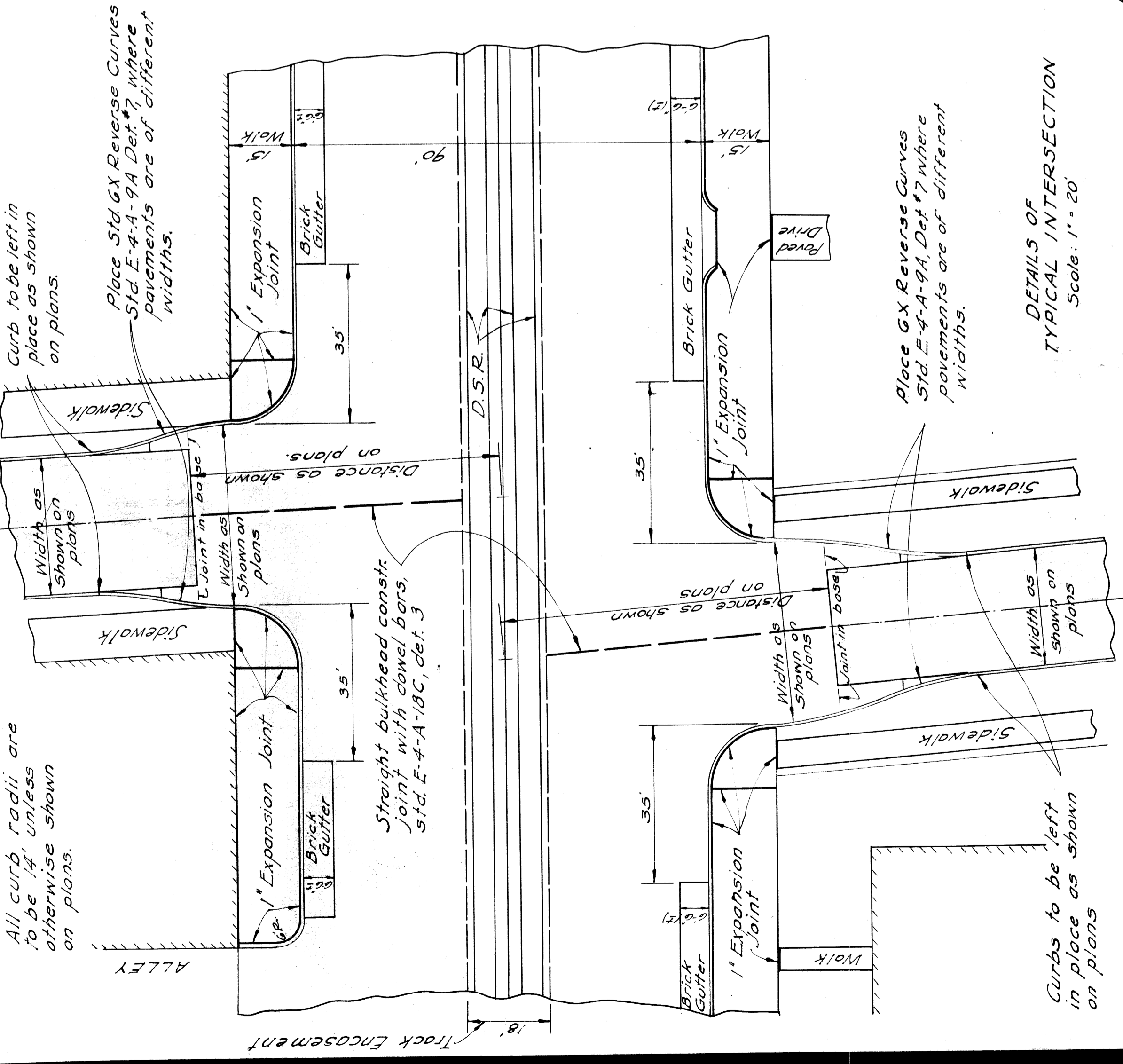


SECTION B-B Scale - 1"-2'

DETAILS OF SPECIAL DRIVEWAY RETURN To apply where called for on plans

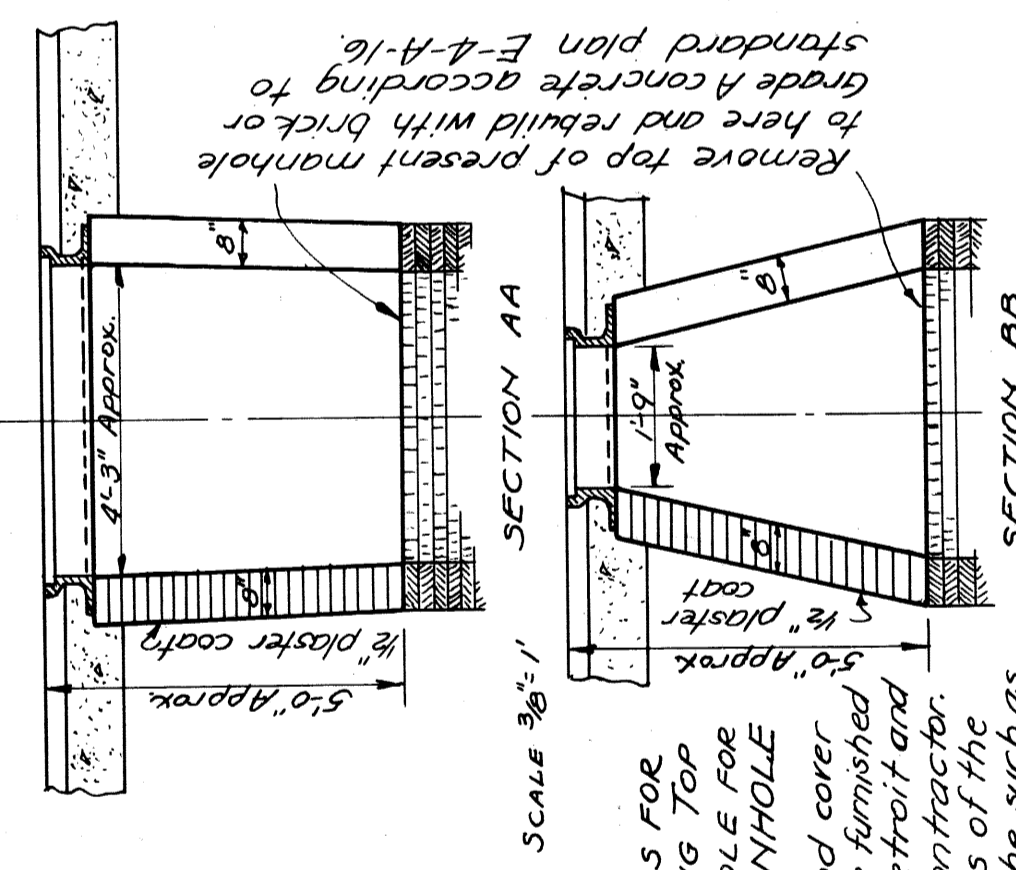


DETAILS OF TYPICAL INTERSECTION Scale: 1" = 20'

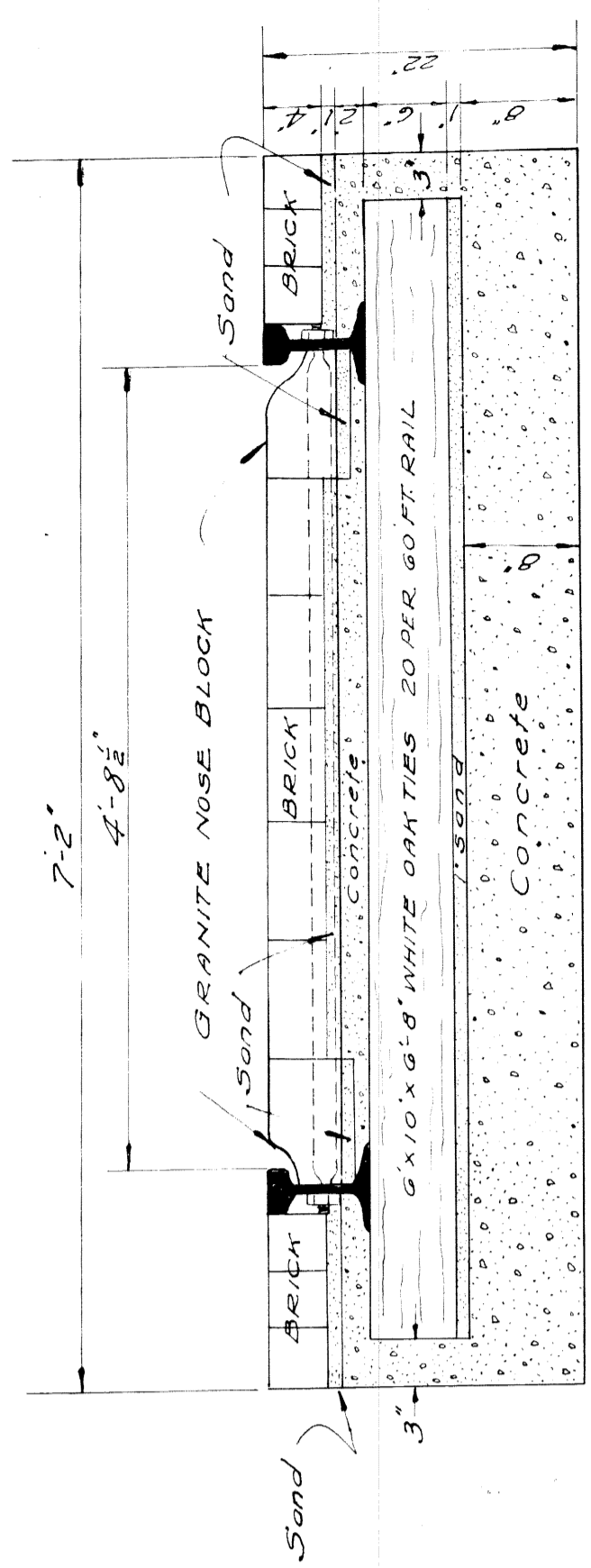


DETAIL OF SPECIAL CURB AND GUTTER To apply where old pavement is to be widened with reverse curves. To be paid for as Special T Straight Curb.

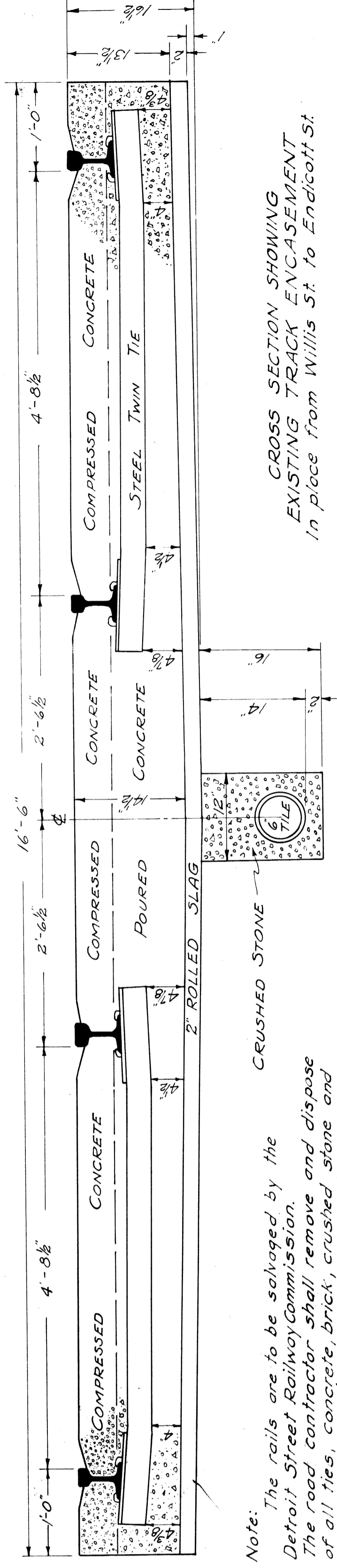
NOTE: Construction to be done in accordance with methods outlined in Standard Plan E-4-A-16.



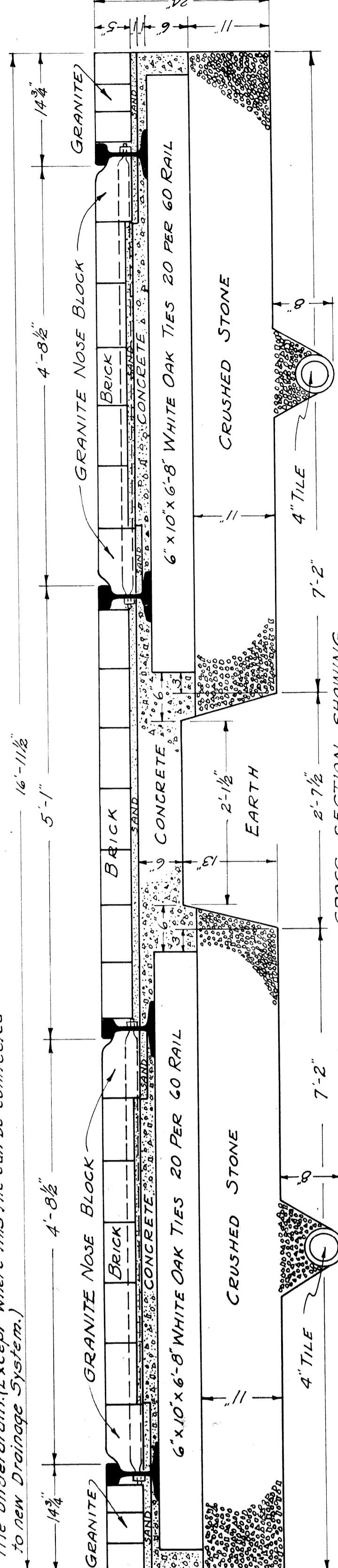
DETAILS FOR REBUILDING TOP OF MANHOLE FOR SNOW MANHOLE The casting and cover for this manhole to be furnished by the City of Detroit and placed by the contractor. Exact dimensions of the manhole are to be such as to fit the casting.



CROSS SECTION SHOWING EXISTING TRACK ENCASMENT In place on Baltimore East and West of Woodward Ave. Scale - 1" = 10'



CROSS SECTION SHOWING EXISTING TRACK ENCASMENT In place from Willis St. to Endicott St. Note: The rails are to be salvaged by the Detroit Street Railway Commission. The road contractor shall remove and dispose of all ties, concrete, brick, crushed stone and file underdrain (Except where this file can be connected to new Drainage System).



CROSS SECTION SHOWING EXISTING TRACK ENCASMENT In place from Endicott St. to Baltimore Ave.

QUANTITY SHEET - B

SURFACING										MANHOLES CATCH BASINS AND INLETS										EARTHWORK CU. YDS.										STORM SEWER									
AS PER PLANS					AS CONSTRUCTED					AS PER PLANS					AS CONSTRUCTED					AS PER PLANS					AS CONSTRUCTED					AS PER PLANS					AS CONSTRUCTED				
STA. TO STA.	LENGTH	WIDTH	REMARKS	STA. TO STA.	LENGTH	WIDTH	EXPLANATION OF CHANGES	STA. TO STA.	EXPLANATION OF CHANGES	STA. TO STA.	EXPLANATION OF CHANGES	STA. TO STA.	EXPLANATION OF CHANGES	STA. TO STA.	EXPLANATION OF CHANGES	STA. TO STA.	EXPLANATION OF CHANGES	STA. TO STA.	EXPLANATION OF CHANGES	STA. TO STA.	EXPLANATION OF CHANGES	STA. TO STA.	EXPLANATION OF CHANGES	STA. TO STA.	EXPLANATION OF CHANGES	STA. TO STA.	EXPLANATION OF CHANGES	STA. TO STA.	EXPLANATION OF CHANGES	STA. TO STA.	EXPLANATION OF CHANGES	STA. TO STA.	EXPLANATION OF CHANGES	STA. TO STA.	EXPLANATION OF CHANGES	STA. TO STA.	EXPLANATION OF CHANGES		
TOTAL										TOTAL										TOTAL										TOTAL									
92+55																																							
97	116.0	90		106.1																																			
102	2187	154		2033																																			
110	2578	315		2532																																			
116	1798	266		1532																																			
123	2074	232		1822																																			
129	24475	2143		2143																																			
124+75	126752	2169		2169																																			
126+52	128148	1686		1686																																			
TOTAL										TOTAL										TOTAL										TOTAL									
TOTAL										TOTAL										TOTAL										TOTAL									
TOTAL										TOTAL										TOTAL										TOTAL									

