

CITY OF DETROIT  
 DEPARTMENT OF PUBLIC WORKS  
 CITY ENGINEERS OFFICE

PLANS FOR PROPOSED

PAVING OF GUILFORD TURNAROUND

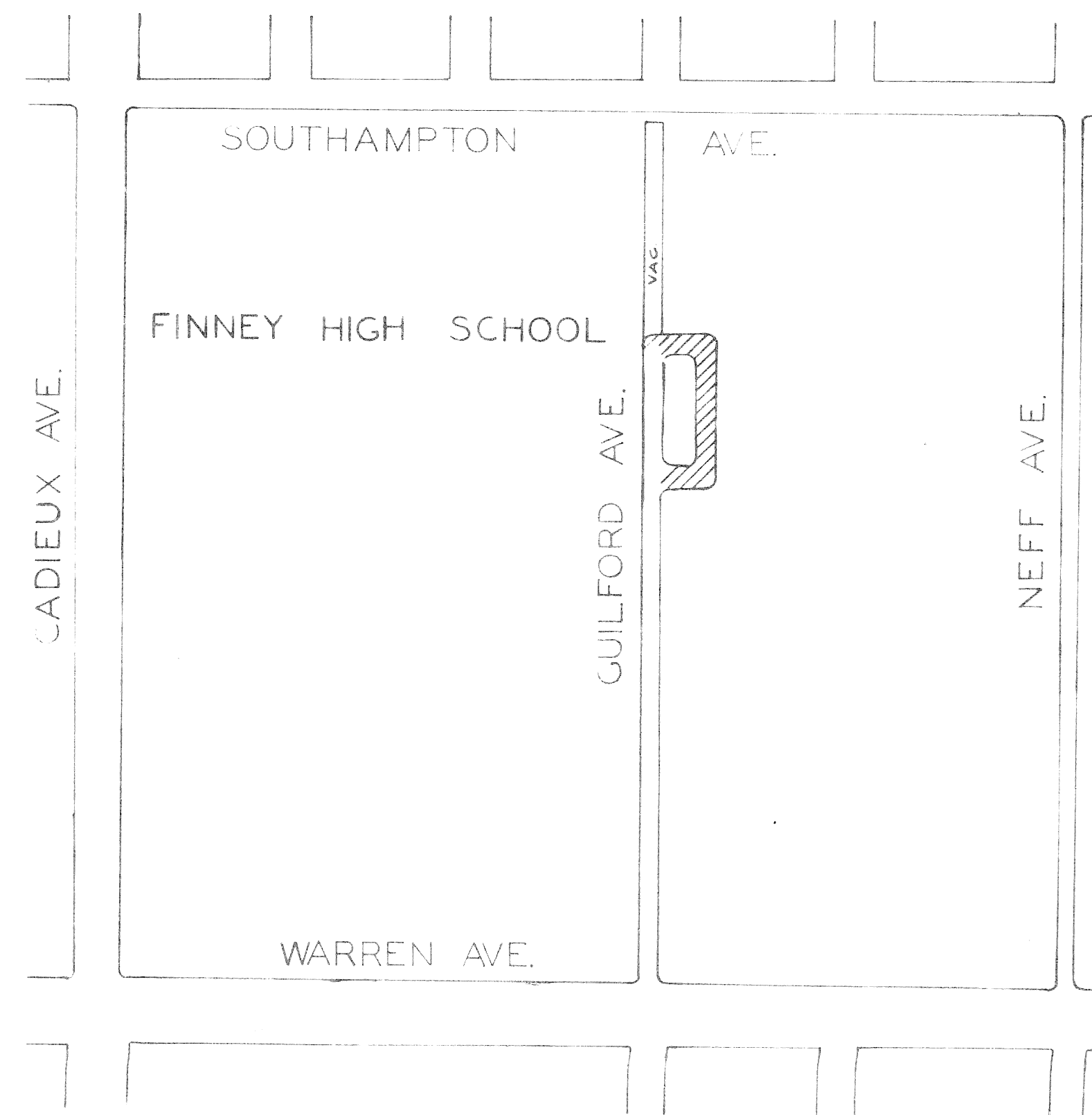
BETWEEN WARREN & SOUTHAMPTON

FOR

DETROIT BOARD OF EDUCATION

INDEX OF SHEETS

- 1 TITLE SHEET
- 2 PAVING DETAILS



A.O. 1954

PROJECT: PAVING OF GUILFORD TURNAROUND BETWEEN WARREN & SOUTHAMPTON	CONTRACT NO. PW 7304
--	-------------------------

PLANS PREPARED BY  
 DEPARTMENT OF PUBLIC WORKS  
 CITY ENGINEERS OFFICE

RECOMMENDED FOR APPROVAL	ENGINEER OF INSPECTION	
RECOMMENDED FOR APPROVAL	HEAD ENGINEER	5-12
APPROVED	ASSISTANT CITY ENGINEER	
APPROVED	CITY ENGINEER	
APPROVED	COMMISSIONER OF PUBLIC WORKS	5-20
DATE		

DRWG. NO. 1 OF 1

QUANTITIES

ITEM NO.	DESCRIPTION OF ITEM	UNIT	TOTAL
1	EXCAVATION	CYAS	8.71
2	BERM GRADING	SYS.	9.81
3	CONCRETE SLAB REMOVAL	SYS.	871
4	SIDEWALK REMOVAL	SYS.	18.25
5	DRIVEWAY REMOVAL	SYS.	2.80
6	CURB & GUTTER REMOVAL	LINE	175
7	TREE REMOVAL 4"-12" DIA.	EA	1
8	TREE REMOVAL 13"-18" DIA.	EA	3
9	STUMP REMOVAL	EA	1
10	FILL (GRADE A)	CYAS	11
11	CATCH BASIN ABANDONMENT	EA	4
12	RESETTING MANHOLES	EA	2
13	CATCH BASINS - NEW	EA	2
14	SEWERS - 12" PIPE	LINE	40
15	SEWERS UNDER PAVEMENT - 12" PIPE	LINE	20
16	PAVEMENT - 9" UNIF. **	SYS.	118.5
17	TEST CORES	EA	1
18	SIDEWALKS - 4" STD *	SYS.	30.0
19	INTEGRAL CURB & GUTTER - REINFORCED	LINE	12
20	ADJUST ASPHALT SURFACE	SYS.	75
21	STRIPPING	SYS.	90
TOTAL			742

\* INCLUDES TYPE III CURB, SEE STD. DRWG. C-4380 OR C-4381  
 \*\* INCLUDES TYPE III CURB, SEE STD. DRWG. C-4380 OR C-4381

LEGEND

- WALK CONSTRUCTION
  - CONCRETE SLAB REMOVAL (TENNIS COURT)
  - SIDEWALK REMOVAL
  - CURB & GUTTER REMOVAL
  - CURB & GUTTER CONSTRUCTION
  - FENCE REMOVAL (BY BOARD OF EDUCATION)
  - ADJUST EXISTING MANHOLES & HANDHOLES
  - CONSTRUCT STD. CATCH BASINS
  - ABANDON EXISTING CATCH BASINS
  - CONSTRUCT STD. 4" CONCRETE WALK
  - RESET EXISTING MANHOLES
- FOR UTILITY SYMBOLS, SEE STD. DRWG. C-902A & C-437B

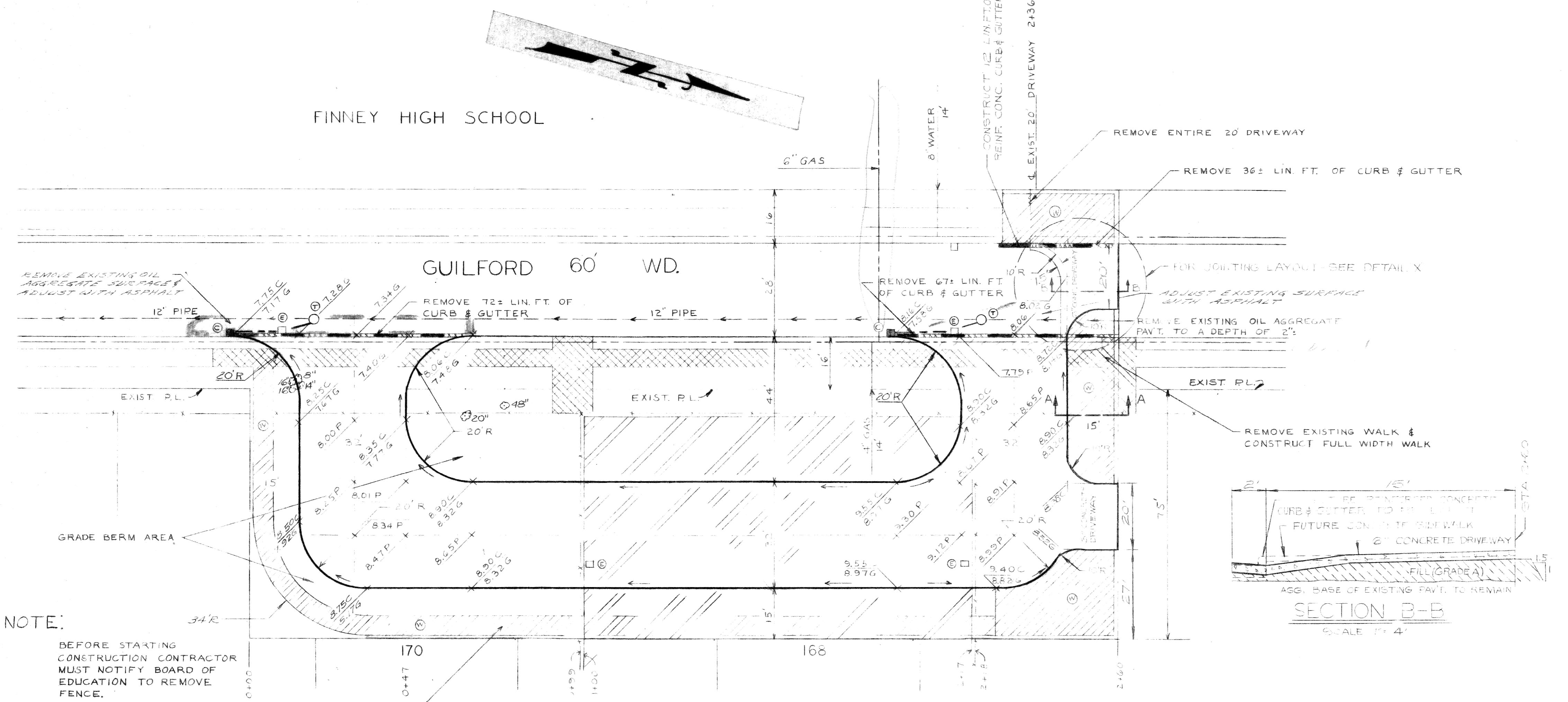
NOTE:

BEFORE STARTING CONSTRUCTION, CONTRACTOR MUST CHECK WITH UTILITIES FOR LOCATIONS OF EXISTING STRUCTURES, WHETHER OR NOT INDICATED ON PLANS.

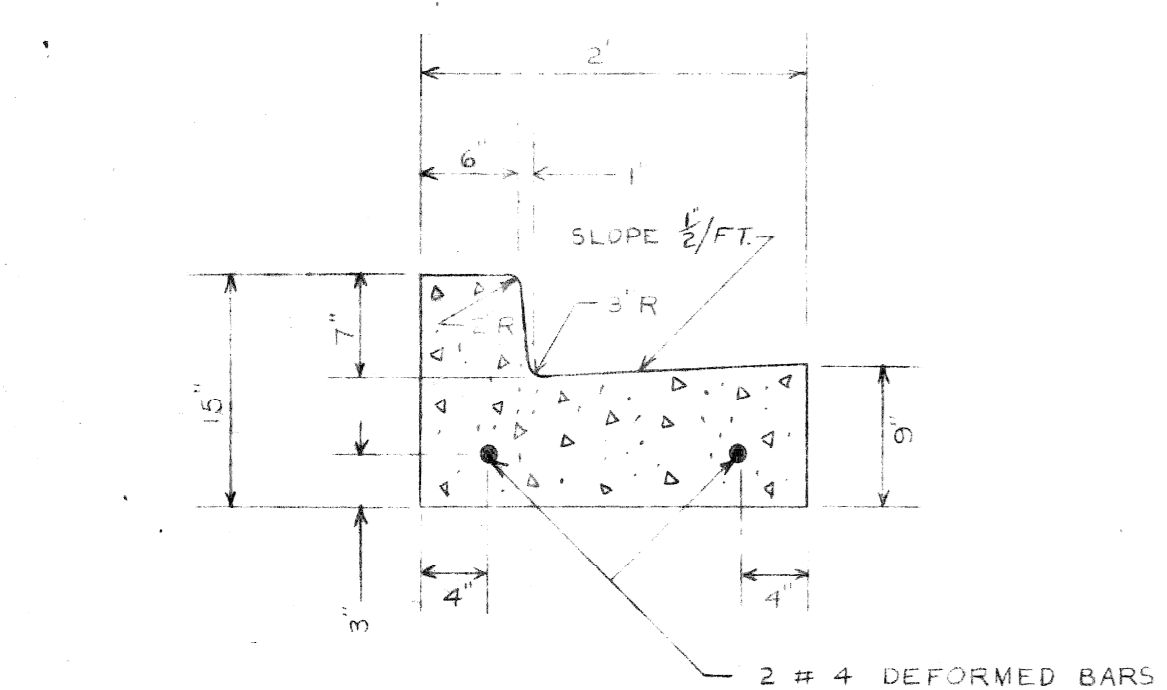
BENCH MARKS ELEV.  
 P.M. 70-255 NE COR. CADEUX & WARREN 109.456  
 C.E.M. 10N HYD. 105.0' S. OF ST. C-00 1/8 GUILFORD 111.60

NOTE:  
 +00 100.00 TO ALL ELEVATIONS

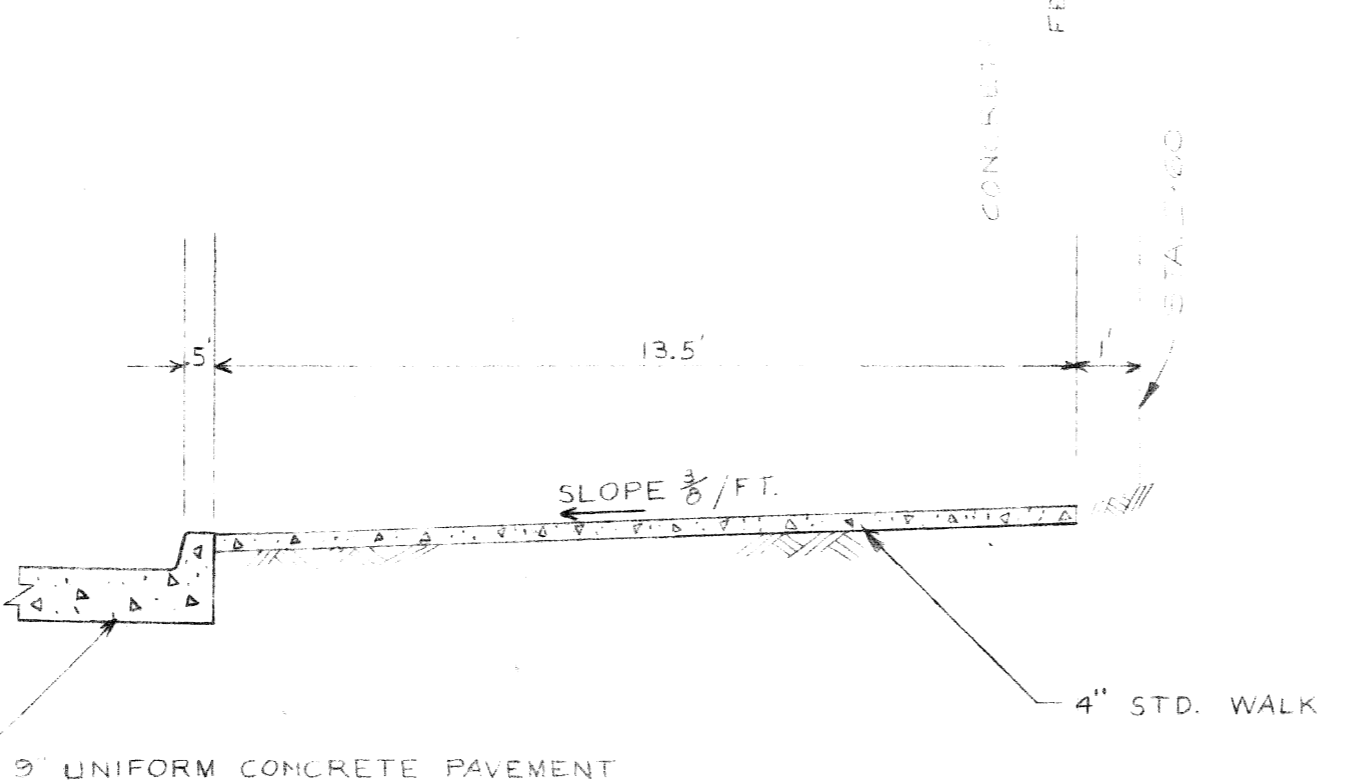
SCALE: AS NOTED  
 A.O. 1954



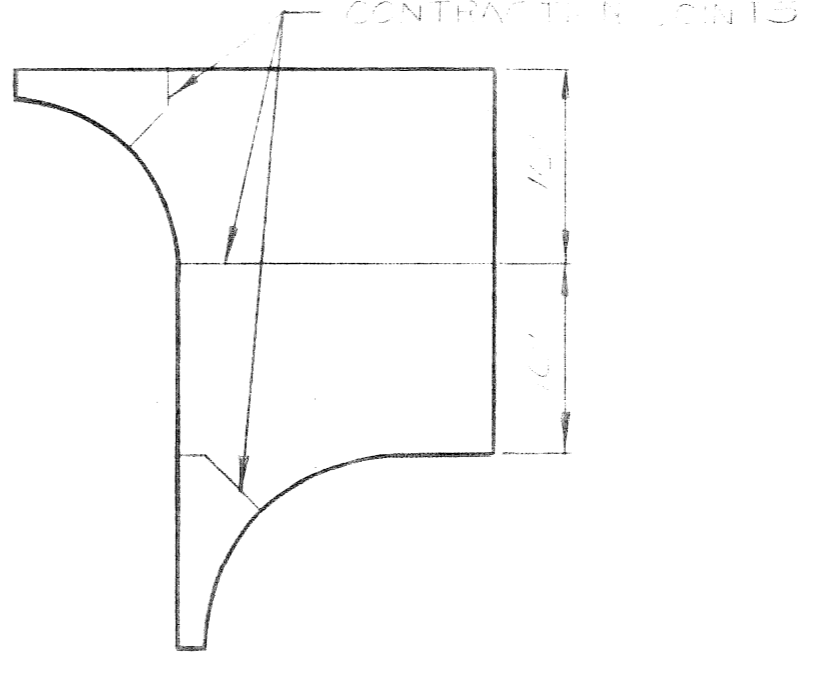
NOTE:  
 BEFORE STARTING CONSTRUCTION CONTRACTOR MUST NOTIFY BOARD OF EDUCATION TO REMOVE FENCE.



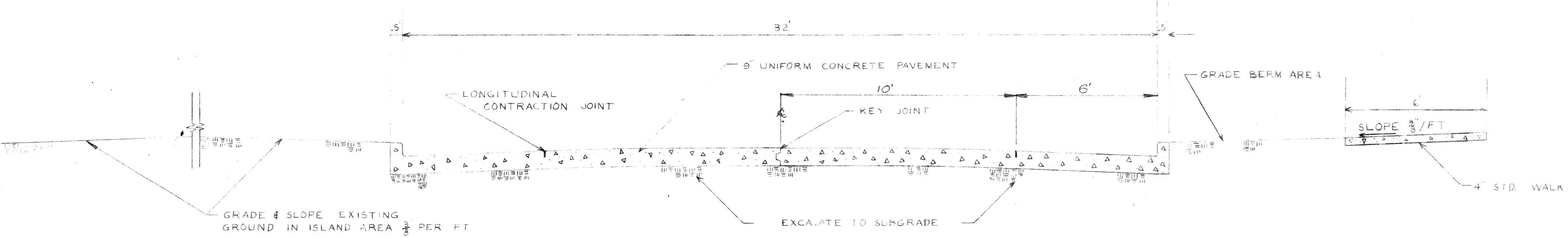
REINFORCED CONCRETE CURB & GUTTER  
 SCALE: 1"=1'



SECTION A-A  
 SCALE: 1"=3'



DETAIL X  
 SCALE: 1"=10'



TYPICAL SECTION  
 SCALE: 1"=3'

NO.	DATE	DESCRIPTION	BY	CHKD.	APVD.
1	11/17/54	6" GAS LINE AIDED DRIVEWAYS ADDED	R.R.		

REVISIONS LOCATED BY COORDINATES ON SHEET

DESIGNED BY	E.S. M...E...	APPROVED:	<i>John Spicken</i>
DRAWN BY	F. ALLGOOD		ENGINEER OF STREETS
TRACED BY			<i>Walter E. ...</i>
CHECKED BY	R.C.M. 71/522003		ENGINEER OF EXTERNAL WORKS

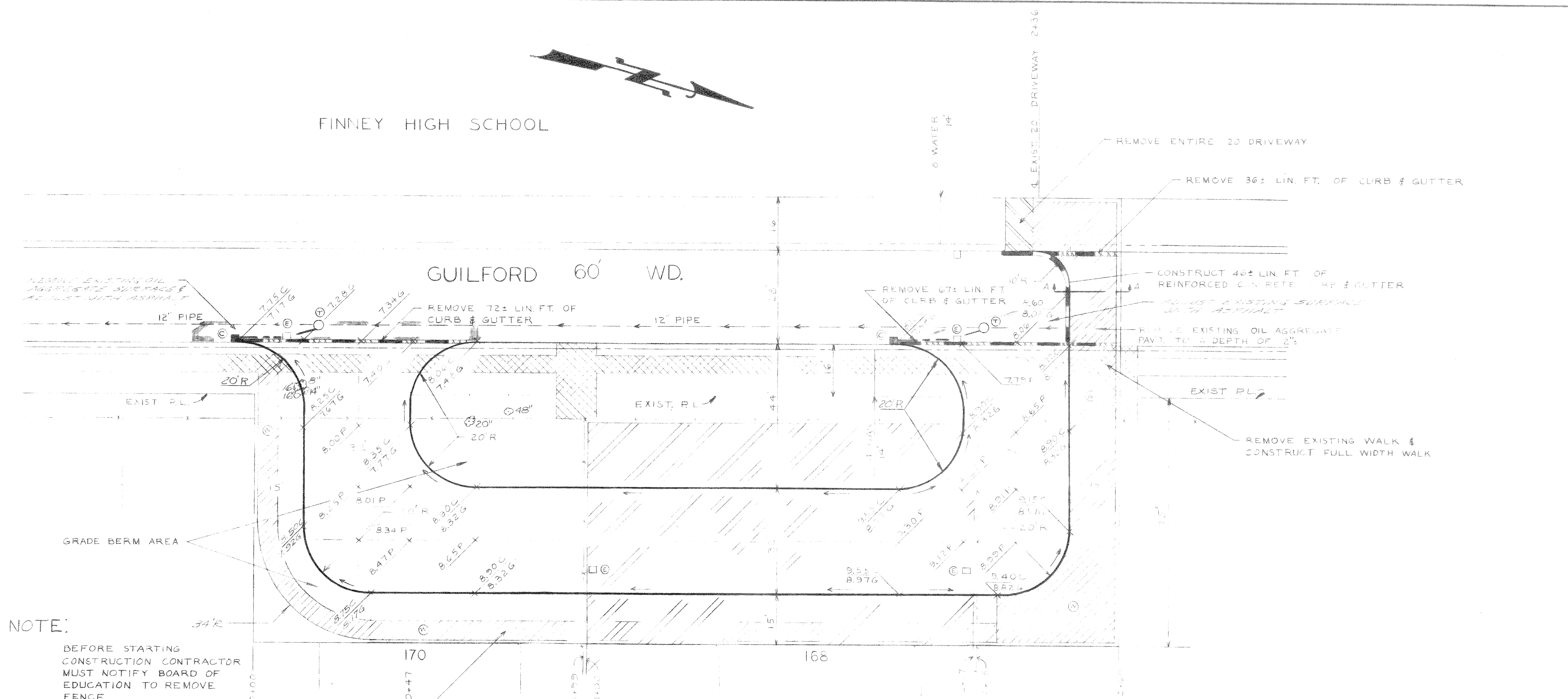
**CITY OF DETROIT**  
 DEPARTMENT OF PUBLIC WORKS  
 CITY ENGINEERS OFFICE  
 FOR  
 BOARD OF EDUCATION

GUILFORD STREET TURNAROUND  
 BETWEEN WARREN & SOUTHAMPTON  
 PAVING DETAILS

SHEET	2	OF	2	SHEETS
CONTRACT NO.	PW 7304			
DRWG NO.				
DATE	DEC. 20, 1954			

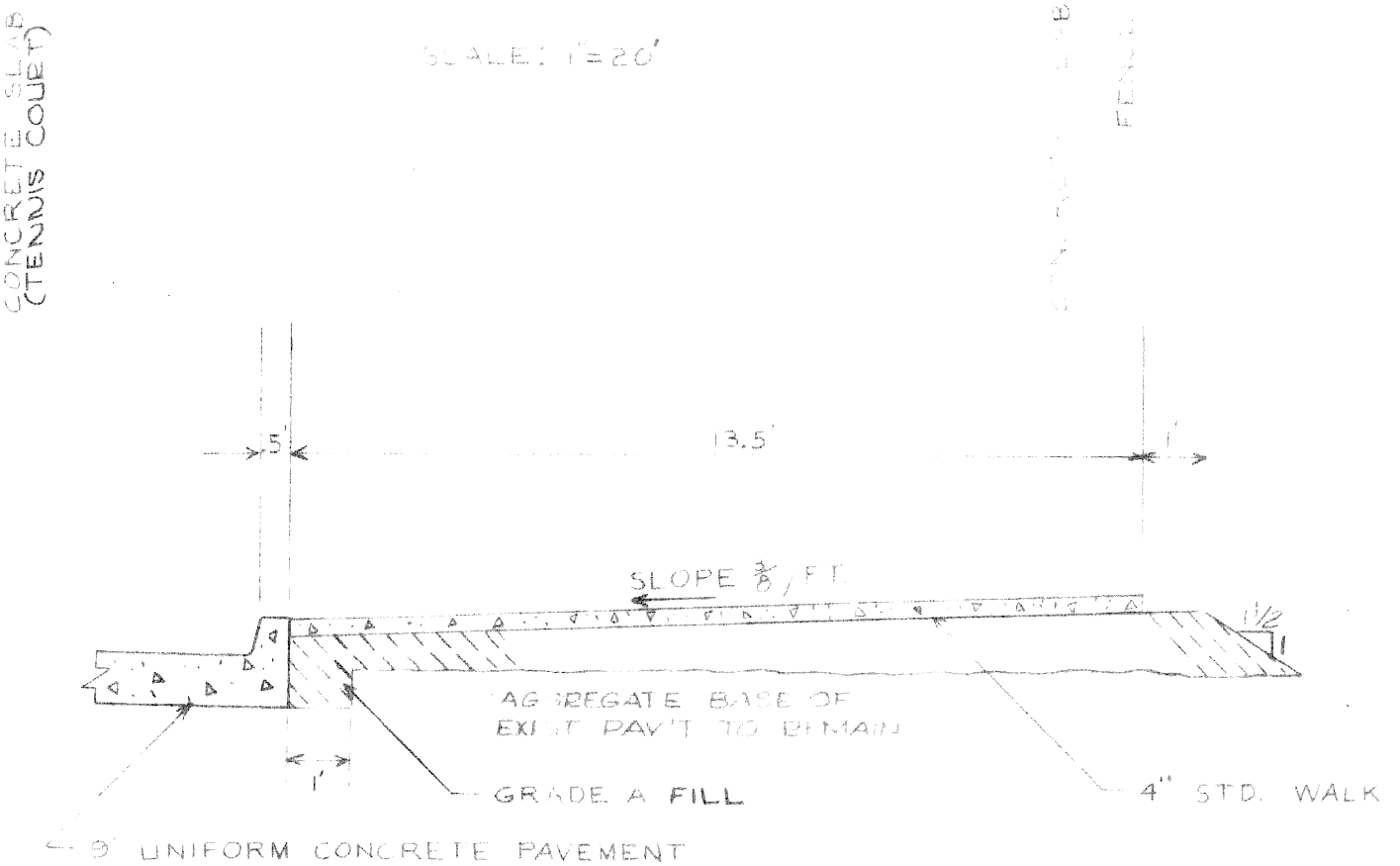
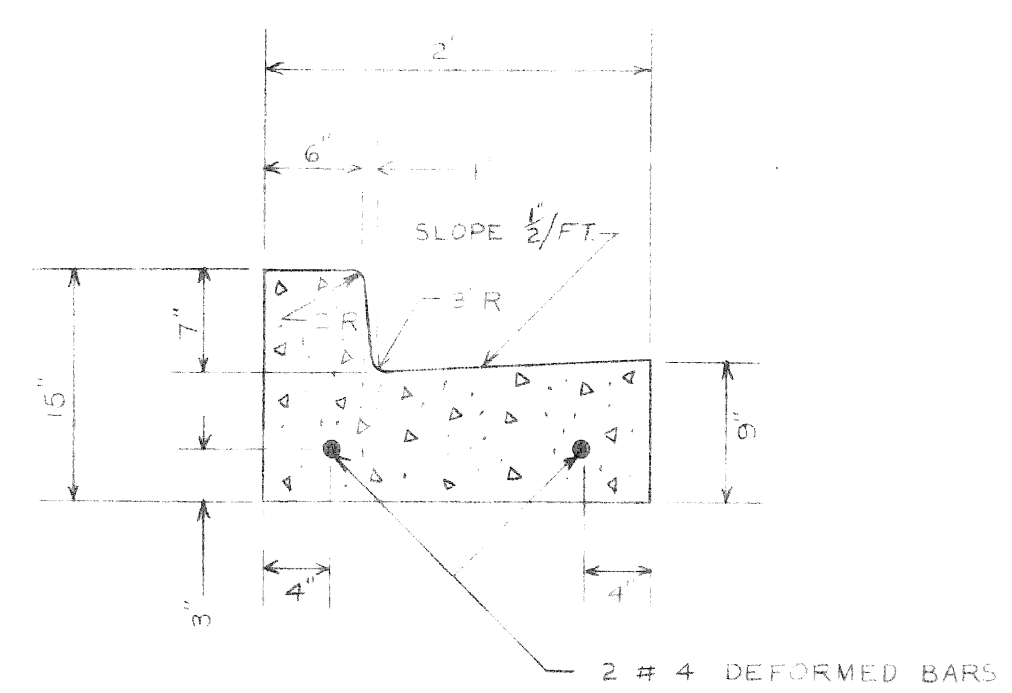
FINNEY HIGH SCHOOL

QUANTITIES



ITEM NO.	DESCRIPTION OF ITEM	UNIT	TOTAL
1	EXCAVATION	CY	800
2	BERM GRADING	SQ	961
3	CONCRETE SLAB REMOVAL	SQ	871
4	SIDEWALK REMOVAL	LF	1525
5	DRIVEWAY REMOVAL	SQ	280
6	CURB & GUTTER REMOVAL	LF	175
7	TREE REMOVAL 4" - 8" DIA.	EA	1
8	TREE REMOVAL 12" - 18" DIA.	EA	3
9	STUMP REMOVAL	EA	1
10	FILL-(GRADE A)	CY	15
11	CATCH BASIN ABANDONMENT	EA	4
12	RESETTING MANHOLES	EA	2
13	CATCH BASINS - NEW	EA	2
14	SEWERS - 12" PIPE	LF	40
15	SEWERS UNDER PAVEMENT - 12" PIPE	LF	20
16	PAVEMENT - 9" UNIF. **	SQ	1187
17	TEST CORES	EA	1
18	SIDEWALKS - 4' STD*	SQ	4288
19	INTEGRAL CURB & GUTTER - REINFORCED	LF	46
20	ADJUST ASPHALT SURFACE	SQ	75
21	STRIPPING	SQ	90

NOTE:  
BEFORE STARTING CONSTRUCTION CONTRACTOR MUST NOTIFY BOARD OF EDUCATION TO REMOVE FENCE.



BENCHMARKS

BENCHMARK	ELEV.
F.B.M. 70-255 N.E. COR. CADIEUX & WARREN	109.452
C.B.M. ON HYD. 105.0 S. OF STA. 0+00 W.S. GUILFORD	111.60

LEGEND

- WALK REMOVAL
- CONCRETE SLAB REMOVAL (TENNIS COURT)
- DRIVEWAY REMOVAL
- CURB & GUTTER REMOVAL
- CURB & GUTTER CONSTRUCTION
- FENCE REMOVAL (BY BOARD OF EDUCATION)
- ADJUST EXISTING MANHOLES & HANDHOLES
- CONSTRUCT STD. CATCH BASINS
- ABANDON EXISTING CATCH BASINS
- CONSTRUCT STD. 4\"/>

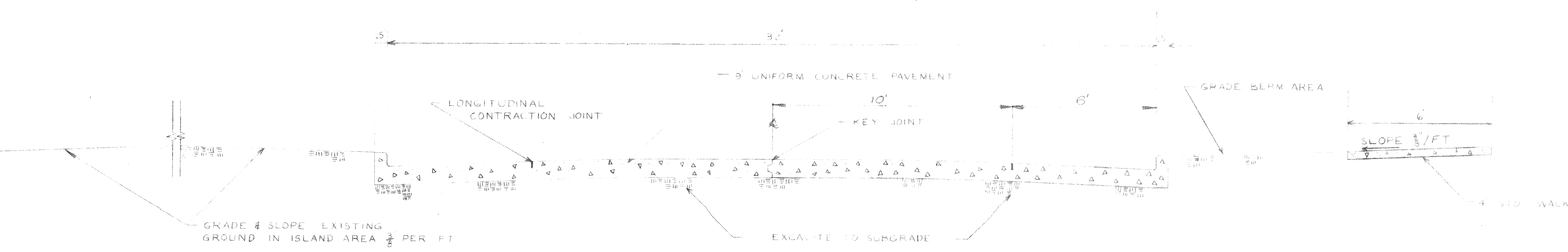
NOTE:  
ADD 100.00 TO ALL ELEVATIONS

NOTE:  
BEFORE STARTING CONSTRUCTION, CONTRACTOR MUST CHECK WITH UTILITIES FOR LOCATION OF EXISTING STRUCTURES, WHETHER OR NOT INDICATED ON PLANS.

REINFORCED CONCRETE CURB & GUTTER

SECTION A-A

TYPICAL SECTION



CODE: _____ REVISIONS LOCATED BY COORDINATES ON SHEET	REFERENCE DRAWINGS: _____ DESIGNED BY: <i>E. M. ...</i> DRAWN BY: F. ALLGOOD TRACED BY: _____ CHECKED BY: _____	APPROVED: <i>[Signature]</i> ENGINEER OF STREETS <i>[Signature]</i> ADMINISTRATIVE ENGINEER <i>[Signature]</i> CHIEF CIVIL ENGINEER	CITY OF DETROIT DEPARTMENT OF PUBLIC WORKS CITY ENGINEERS OFFICE FOR BOARD OF EDUCATION	GUILFORD STREET TURNAROUND BETWEEN WARREN & SOUTHAMPTON PAVING DETAILS	SHEET 2 OF 2 SHEETS CONTRACT NO. PW 7304 DRWG NO. _____ DATE _____
--	---	--	---	--	---

SCALE: AS NOTED  
A.G. 1954

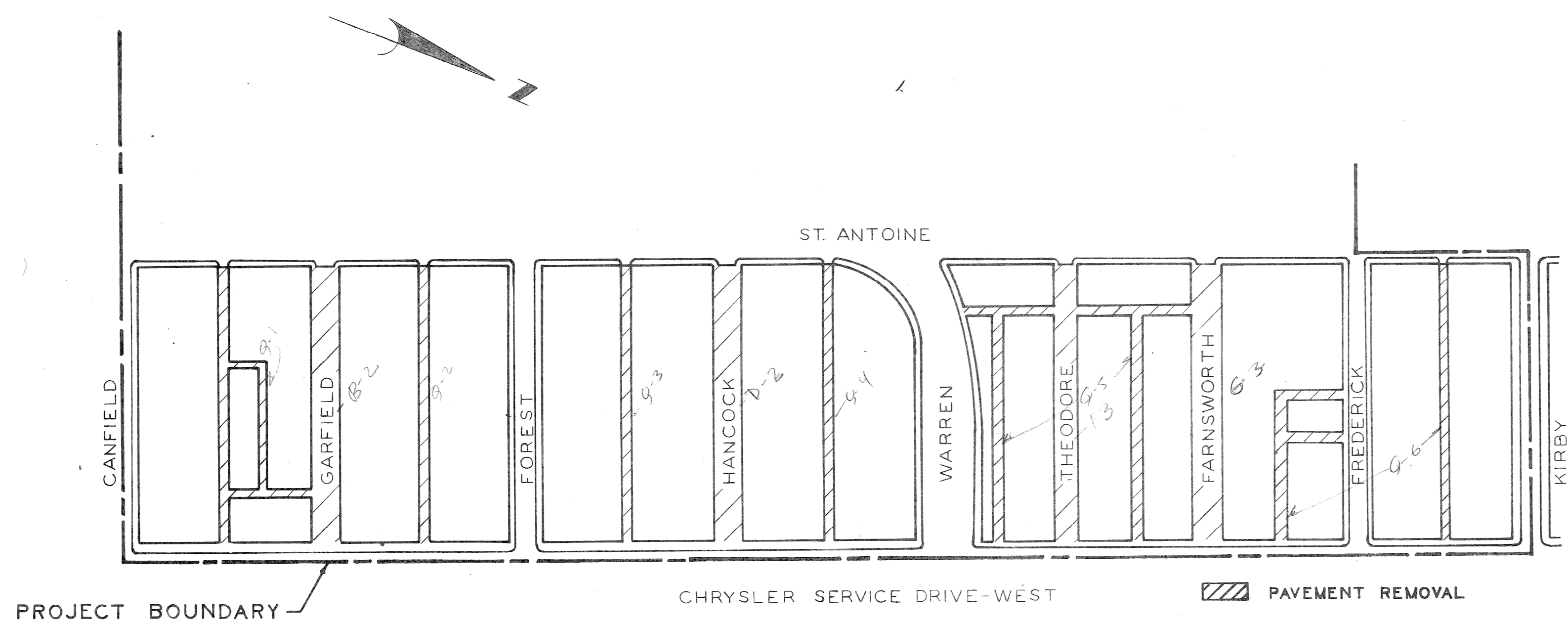
CITY OF DETROIT  
DEPARTMENT OF PUBLIC WORKS  
CITY ENGINEERS OFFICE

PLANS FOR PROPOSED

PAVEMENT REMOVAL AND MISCELLANEOUS CONSTRUCTION  
MEDICAL CENTER

REHABILITATION PROJECT NO.3 MICH. R-112

BOUNDED BY: CANFIELD, ST. ANTOINE, KIRBY AND CHRYSLER W. SERVICE DRIVE  
FOR  
DETROIT HOUSING COMMISSION

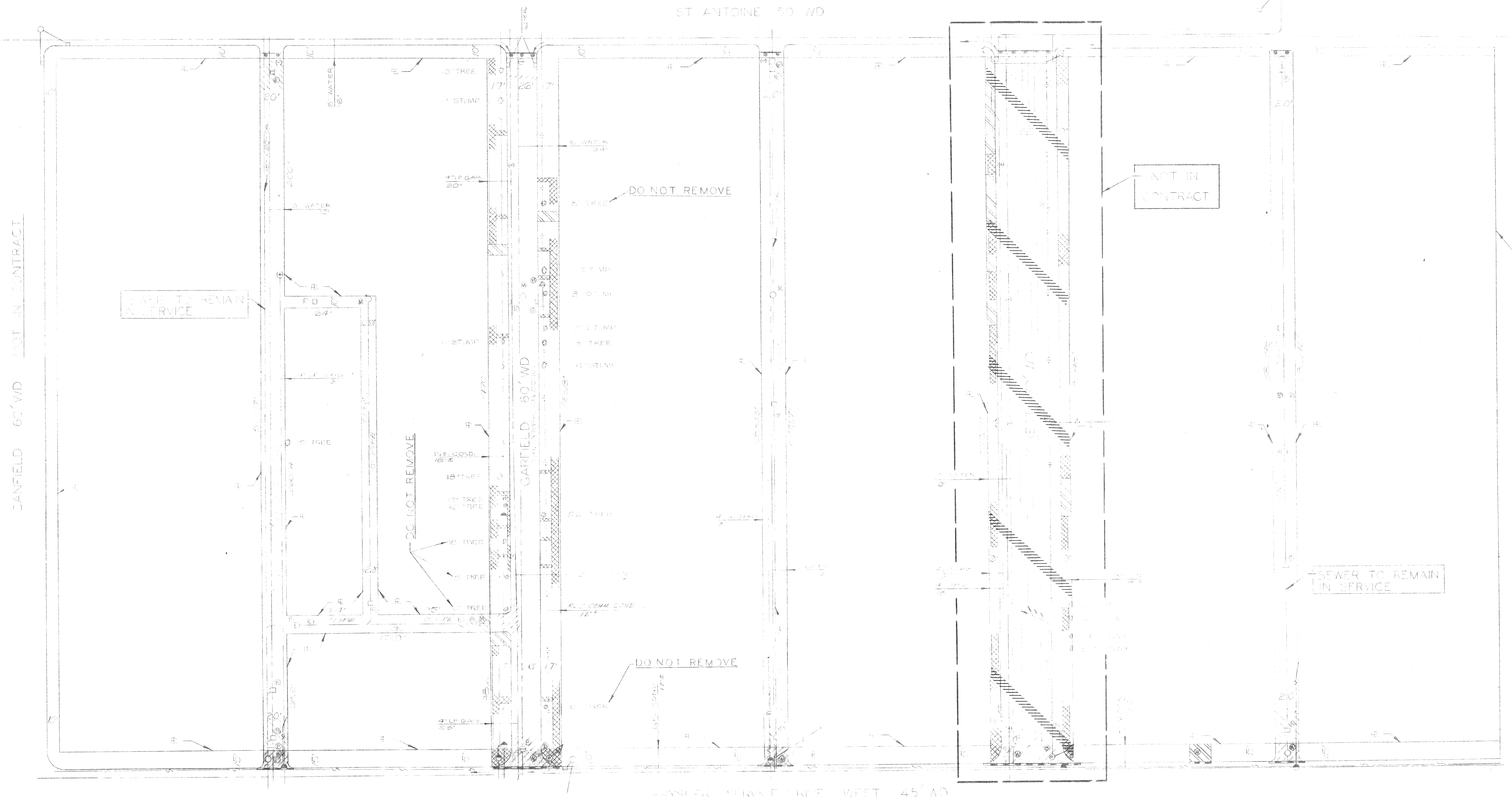


INDEX TO SHEETS

- 1 TITLE SHEET
- 2-3 REMOVAL AND MISCELLANEOUS CONSTRUCTION SHEET
- 4 REMOVAL AND MISCELLANEOUS CONSTRUCTION,  
DETAILS AND QUANTITIES

AO 1975

<b>PROJECT:</b> PAVEMENT REMOVAL AND MISCELLANEOUS CONSTRUCTION MEDICAL CENTER REHABILITATION PROJECT NO.3 MICH. R-112	<b>CONTRACT NO.</b>  PW 5799
<b>PLANS PREPARED BY</b> DEPARTMENT OF PUBLIC WORKS CITY ENGINEERS OFFICE	
RECOMMENDED FOR APPROVAL <small>ENGINEER OF INSPECTION</small>  <small>DATE</small> 6-11-71	RECOMMENDED FOR APPROVAL <small>HEAD ENGINEER</small>  <small>DATE</small> 6/11/71
APPROVED <small>ASSISTANT CITY ENGINEER</small>  <small>DATE</small> 6-12-71	APPROVED <small>CITY ENGINEER</small>  <small>DATE</small> 6-12-71
<b>DATE</b> JUNE 9 1971	<b>DRWG. NO.</b> 1 OF 4



SEWER TO REMAIN IN SERVICE

DO NOT REMOVE

NOT IN CONTRACT

DO NOT REMOVE

DO NOT REMOVE

SEWER TO REMAIN IN SERVICE

NOTE:  
SAWING AT ALL RETURNS AND DRIVES  
ALONG THE CHRYSLER SERVICE DRIVE  
WILL BE PAID FOR IN LFT.

NOTE -  
APPROXIMATELY 2238 CYDS OF  
SELECTED EXCAVATED MATERIAL  
REQUIRED FOR THIS SHEET.

FOR LEGEND AND DETAILS  
SEE SHEET #4

SCALE 1"=40'

COORD.	DESCRIPTION	BY	CHKD	APPROV	DATE
	UNUSUAL HANDLING OF MATERIALS				
	TREE REMOVAL REVISED				
REVISIONS LOCATED BY COORDINATES ON SHEET					

DESIGNED BY	APPROVED:
DRAWN BY	ENGINEER
TRACED BY	ADMINISTRATIVE ENGINEER
CHECKED BY	HEAD, CIVIL DIVISION

**CITY OF DETROIT**  
DEPARTMENT OF PUBLIC WORKS  
CITY ENGINEERS OFFICE  
FOR  
DETROIT HOUSING COMMISSION

PAVEMENT REMOVAL AND MISCELLANEOUS CONSTRUCTION,  
MEDICAL CENTER  
REHABILITATION PROJECT NO. 3 MICH. R-112  
REMOVAL AND MISCELLANEOUS CONSTRUCTION SHEET

C.S.P.O. NO. 30
INDEX NO. 6
SHEET 2 OF 4 SHEETS
CONTRACT NO. PW 5799
APPROVED DATE 10 1975
DATE JUNE 9, 1971

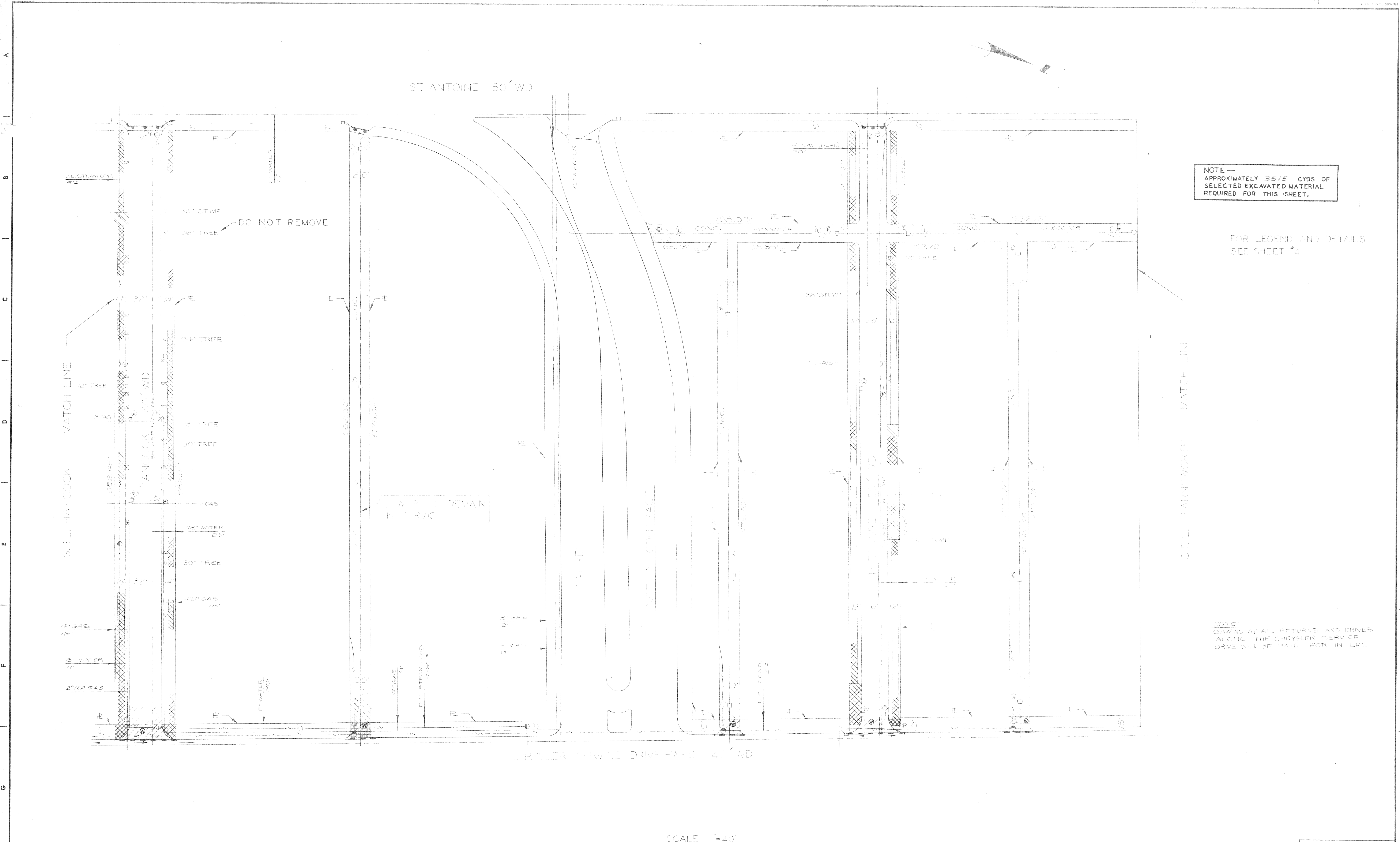
ST. ANTOINE STREET



APPROXIMATELY 100 CUBIC YD. OF SELECTED EXCAVATED MATERIAL REQUIRED FOR THIS SHEET.

DESIGNED BY	APPROVED:
DRAWN BY	
CHECKED BY	
REFERENCE DRAWINGS	

CITY OF DETROIT  
 DEPARTMENT OF PUBLIC WORKS  
 CITY ENGINEER'S OFFICE



NOTE - APPROXIMATELY 35/5 CYDS OF SELECTED EXCAVATED MATERIAL REQUIRED FOR THIS SHEET.

FOR LEGEND AND DETAILS SEE SHEET #4

NOTE: SAWING AT ALL RETURNS AND DRIVES ALONG THE CHRYSLER SERVICE DRIVE WILL BE PAID FOR IN LFT.

SCALE 1"=40'

NO.	DESCRIPTION	DATE
1	REVISIONS LOCATED BY COORDINATES ON SHEET	

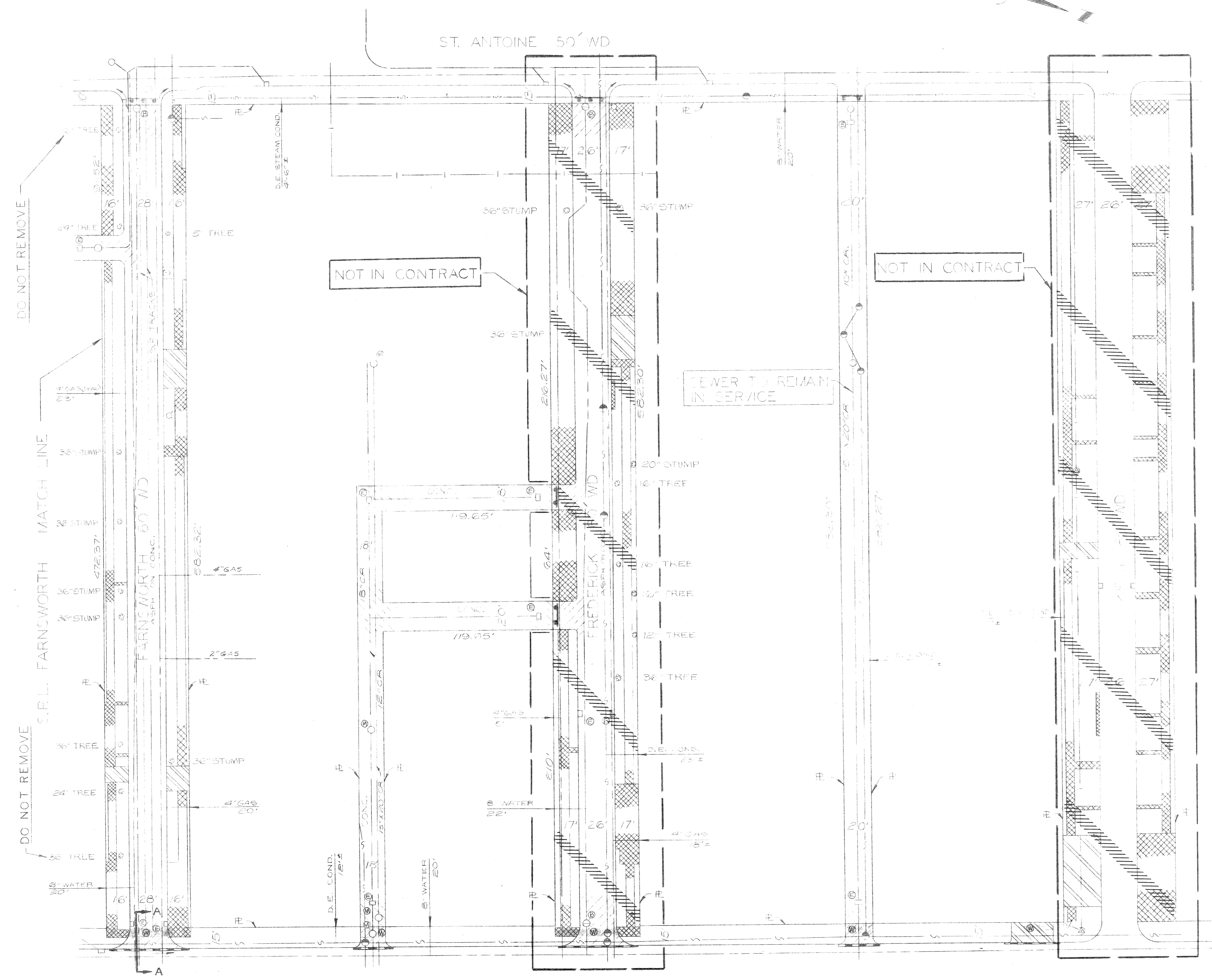
DESIGNED BY	D. E. U.
DRAWN BY	
TRACED BY	
CHECKED BY	TALLEY, K.

APPROVED	<i>Richard Allen</i>
ENGINEER OF STREETS	ENGINEER OF IMPROVEMENTS
ACTING ADMINISTRATIVE ENGINEER	

**CITY OF DETROIT**  
 DEPARTMENT OF PUBLIC WORKS  
 CITY ENGINEERS OFFICE  
 FOR  
 DETROIT HOUSING COMMISSION

PAVEMENT REMOVAL AND MISCELLANEOUS CONSTRUCTION  
 MEDICAL CENTER  
 REHABILITATION PROJECT NO. 3 MICH. R-112  
 REMOVAL AND MISCELLANEOUS CONSTRUCTION SHEET

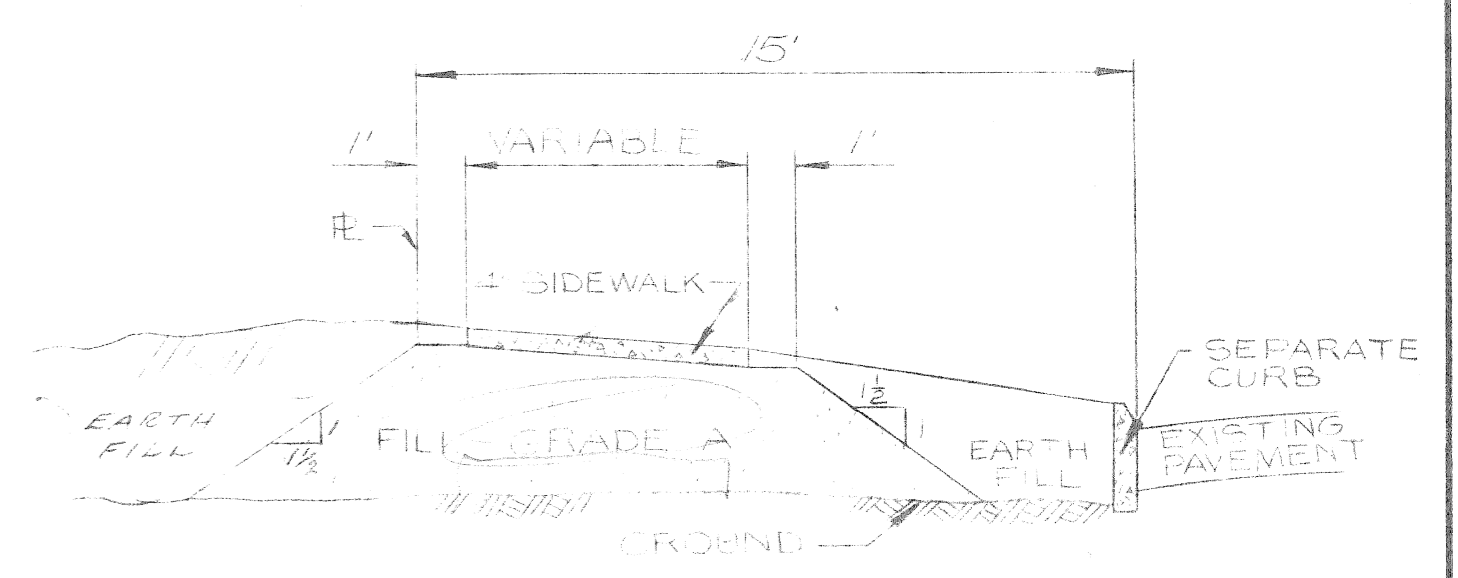
INDEX NO. 30
INDEX NO. 6
SHEET 3 OF 4 SHEETS
CONTRACT NO. PW 5799
ADJUTANT NO. 10 1975
DATE JUNE 9, 1971



NO.	DESCRIPTION OF ITEM	UNIT	SH. 2	SH. 3	SH. 4	TOTAL
1	STREET PAVEMENT REMOVAL UNREINFORCED	SF	7220	14844	7967	30031
2	STREET PAVEMENT REMOVAL UNREINFORCED	SF	1371	4214	1031	7616
3	ALLEY PAVEMENT REMOVAL	SF	4617	4258	2423	11298
4	DRIVEWAY REMOVAL	SF	763	900	1346	2409
5	TREE REMOVAL 4" DIA.	EA	6	2	1	9
6	TREE REMOVAL 12" DIA.	EA	4	1	1	6
7	TREE REMOVAL 24" DIA.	EA	1	1	2	4
8	TREE REMOVAL 26" DIA.	EA	1			1
9	TREE REMOVAL 30" DIA.	EA		2		2
10	TREE REMOVAL 36" DIA.	EA	6	1	2	9
11	STUMP REMOVAL	EA	6	2	3	11
12	STREETCAR LANE REMOVAL	LF			1165	1165
13	STREETCAR TRACK BASE REMOVAL	SF			432	432
14	PERMANENT BARRICADE REMOVAL	EA		1		1
15	SEPARATE TYPE CURB REMOVAL REINFORCED	LF	30	30	21	81
16	LATCH BASIN ABANDONMENT	EA	13	19	7	49
17	MANHOLE ABANDONMENT	EA	8	2	6	16
18	MANHOLE ADJUSTMENT	EA	6	4	1	11
19	LEADING ABANDONED ALLEYS	SF	4617	4258	2423	11298
20	LEADING ABANDONED ALLEYS	SF	3889	7110	3907	14906
21	SIDEWALKS 4" ETC.	SF	2499	2168	1217	5884
22	SEPARATE CURB UNREINFORCED TYPE II	LF	164	208	148	520
23	FILL (GRADE A)	SF	27	29	23	79
24	SINGLE BEAM BARREL BARRICADE - 12' LENGTH	EA	3	1	4	8
25	SINGLE BEAM BARREL BARRICADE - 25' LENGTH	EA	1	2	1	4
26	BARRELS - JOINTS	LF	164	208	148	520
27	MAINTAINING TRAFFIC	LUMP				304

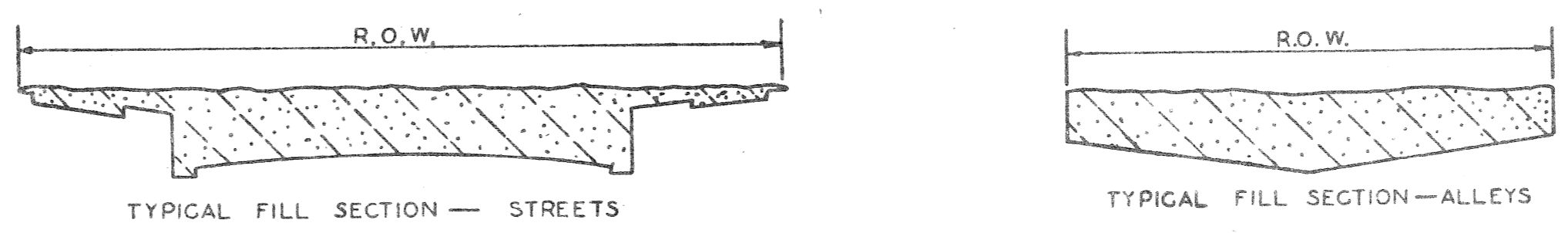
- LEGEND**
- [Hatched Box] STREET PAVEMENT REMOVAL
  - [Hatched Box] ALLEY PAVEMENT REMOVAL
  - [Hatched Box] SIDEWALK REMOVAL
  - [Hatched Box] DRIVEWAY REMOVAL
  - [Circle with X] CONSTRUCT STD. 4" CONC. WALK
  - [Circle with O] ABANDON EXISTING CATCH BASIN
  - [Circle with O] ADJUST EXISTING MANHOLE
  - [Circle with O] ABANDON EXISTING SEWER MANHOLE
  - [Circle with O] TREE OR STUMP REMOVAL
  - [Hatched Box] PROPOSED 12' SINGLE BEAM BARREL BARRICADE
  - [Hatched Box] PROPOSED 25' SINGLE BEAM BARREL BARRICADE
  - [Hatched Box] BARRICADE REMOVAL
  - [Hatched Box] CONSTRUCT SEPARATE TYPE CURB

**NOTES:**  
 WHERE CALLED FOR ON THE PLANS, REMOVE THE EXISTING STREET PAVEMENT, CURBS, SIDEWALKS, DRIVEWAYS, TREES AND ALLEY PAVEMENT WITHIN THE RIGHT OF WAY UNLESS OTHERWISE NOTED.  
 SAWING AT ALL RETURNS AND DRIVES ALONG THE CHRYSLER SERVICE DRIVE WILL BE PAID FOR IN L.F.  
 ALL R.O.W. OVERHEAD AND UNDERGROUND LINES ARE TO REMAIN INTACT.



**SECTION A-A**  
 PLAN, BERMADA, CURB AND SIDEWALK DETAIL  
 SCALE 1/4" = 1'-0"

STARTING CONSTRUCTION — CONTRACTOR MUST CHECK WITH UTILITIES FOR LOCATIONS OF EXISTING STRUCTURES WHETHER OR NOT INDICATED ON PLANS.



**NOTE** — APPROXIMATELY 1858 CYDS OF SELECTED EXCAVATED MATERIAL REQUIRED FOR THIS SHEET.

SCALE 1"=40'

REVISIONS LOCATED BY COORDINATES ON SHEET	DESCRIPTION	DRN	CHKD	APVD	DATE
1	WHOLE ABANDONMENT & SEWERS REVISED	2/11			1/10/75
2	TREE REMOVAL REVISED	NCT			2/11/75
3	GAS LINES REVISED IN FARNSWORTH W.T.				2/11/75

DESIGNED BY	J. G. U.
DRAWN BY	J. G. U.
TRACED BY	
CHECKED BY	ALLEY, H. K.

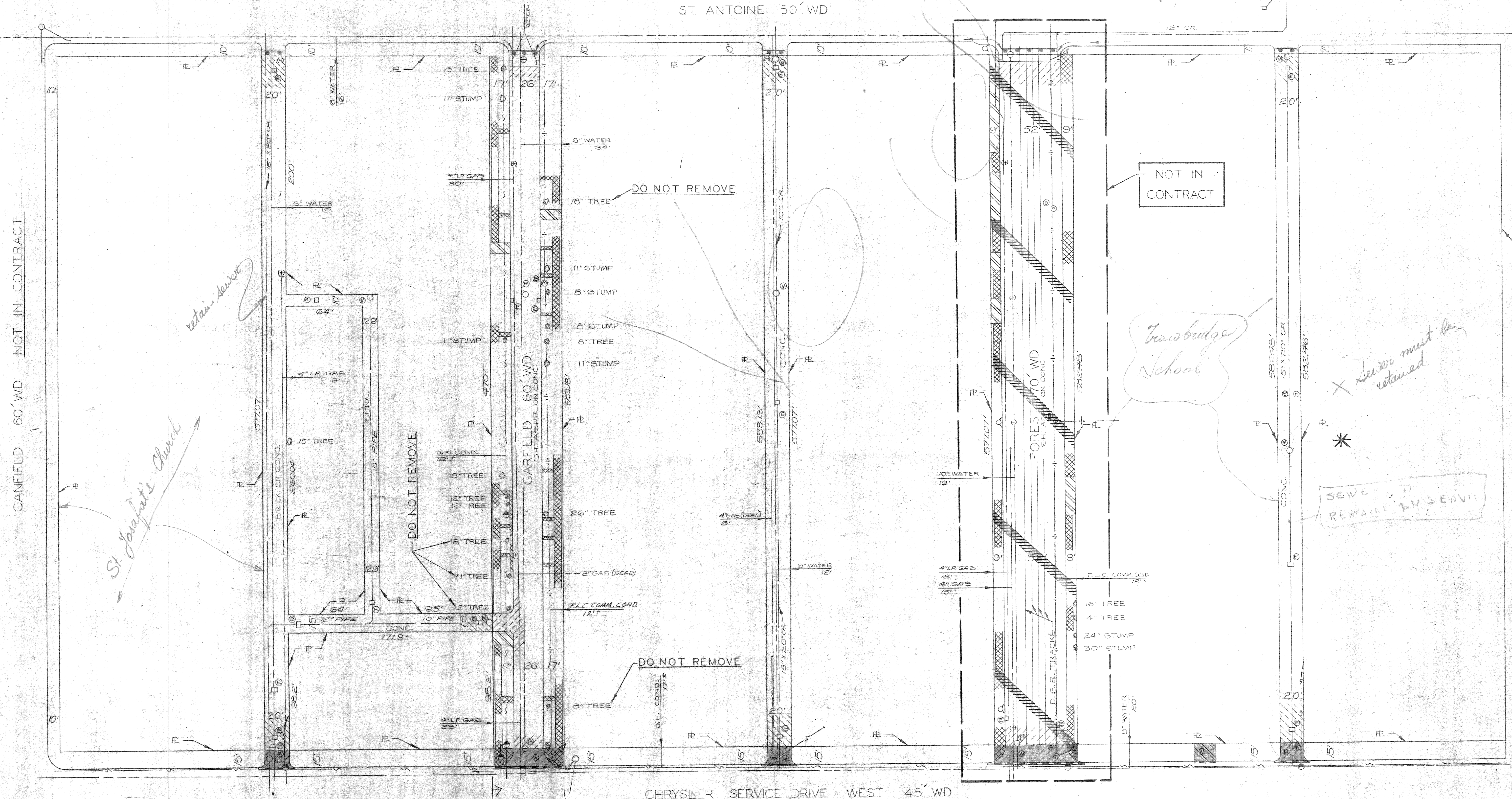
APPROVED:	J. Erickson	W. J. Proctor
ENGINEER OF STREETS	ENGINEER OF EXPANSION	
	ACTING ADMINISTRATIVE ENGINEER	
	HEAD CIVIL ENGINEER	

**CITY OF DETROIT**  
 DEPARTMENT OF PUBLIC WORKS  
 CITY ENGINEERS OFFICE  
 FOR  
 DETROIT HOUSING COMMISSION

PAVEMENT REMOVAL AND MISCELLANEOUS CONSTRUCTION  
 MEDICAL CENTER  
 REHABILITATION PROJECT NO. 3 - MICH. R-112  
 REMOVAL AND MISCELLANEOUS CONSTRUCTION, DETAILS AND QUANTITIES

TOPO. NO. 30
INDEX NO. 6
SHEET 4 OF 4 SHEETS
CONTRACT NO. PW 5799
ASSIGNMENT NO. AO 1975
DATE JUNE 9, 1975





NOTE: SAWING AT ALL RETURNS AND DRIVES ALONG THE CHRYSLER SERVICE DRIVE WILL BE PAID FOR IN L.F.T.

NOTE - APPROXIMATELY 2288 CYDS OF SELECTED EXCAVATED MATERIAL REQUIRED FOR THIS SHEET.

SCALE 1"=40'

FOR LEGEND AND DETAILS SEE SHEET #4

NO.	DESCRIPTION	DATE	BY
1	TREE REMOVAL REVISED	11/11	

DESIGNED BY	D. C. U.
DRAWN BY	
TRACED BY	
CHECKED BY	TALLEY N. KAWWAD

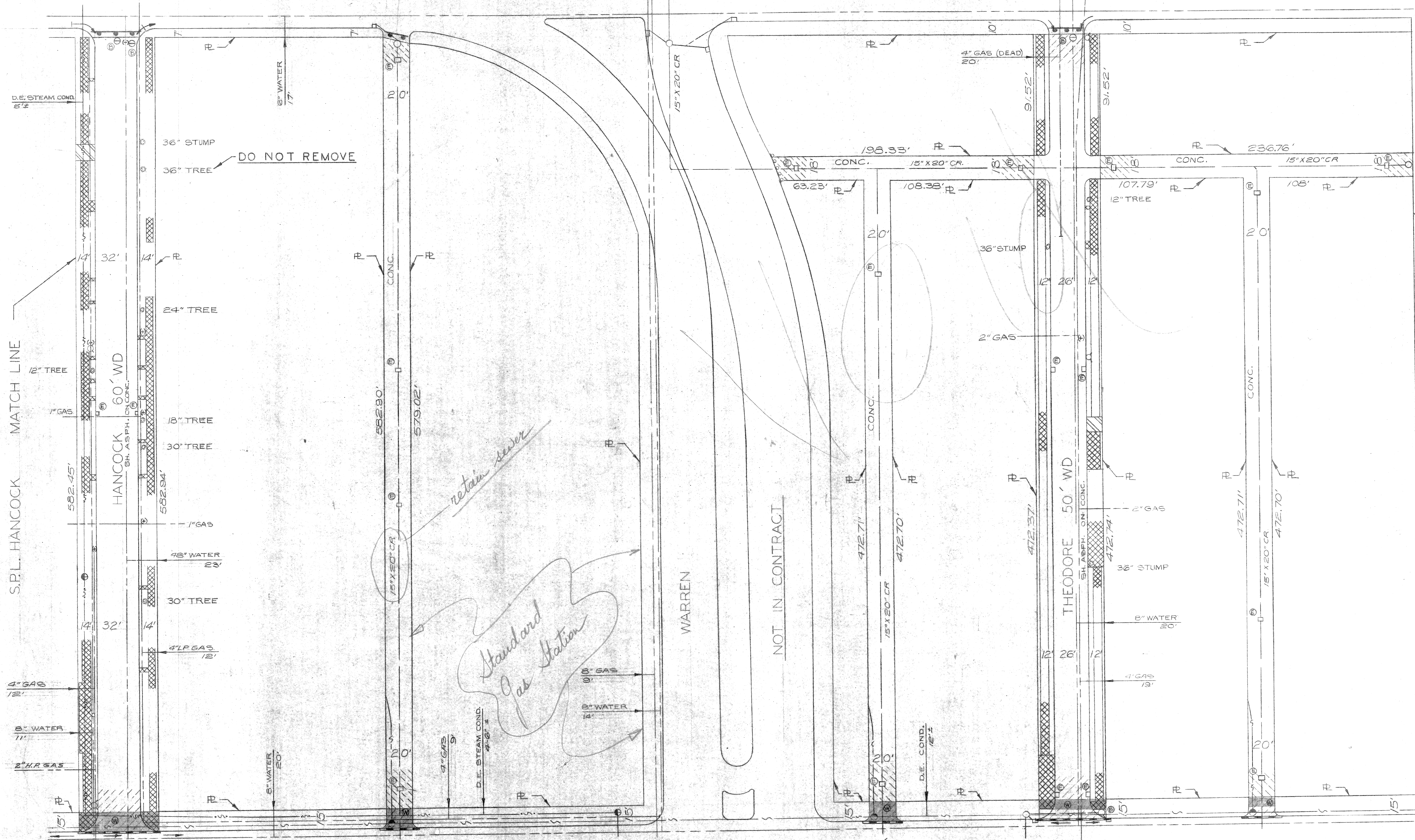
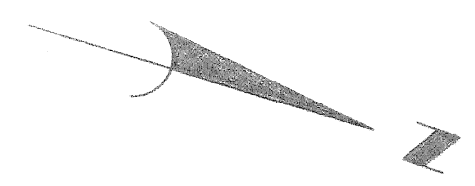
APPROVED:	<i>[Signature]</i>
ENGINEER OF STREETS	
ADMINISTRATIVE ENGINEER	
HEAD CIVIL ENGINEER	

CITY OF DETROIT  
DEPARTMENT OF PUBLIC WORKS  
CITY ENGINEERS OFFICE  
FOR  
DETROIT HOUSING COMMISSION

PAVEMENT REMOVAL AND MISCELLANEOUS CONSTRUCTION  
MEDICAL CENTER  
REHABILITATION PROJECT NO. 3 MICH. R-112  
REMOVAL AND MISCELLANEOUS CONSTRUCTION SHEET

TOPO. NO. 30
INDEX NO. 6
SHEET 2 OF 4 SHEETS
CONTRACT NO. PW 5709
ASSIGNMENT NO. AQ 197
DATE JUNE 9, 1971

ST. ANTOINE 50' WD



NOTE - APPROXIMATELY 3575 CYDS OF SELECTED EXCAVATED MATERIAL REQUIRED FOR THIS SHEET.

FOR LEGEND AND DETAILS SEE SHEET #4

S.P.L. FARNSWORTH MATCH LINE

NOTE: SAWING AT ALL RETURNS AND DRIVES ALONG THE CHRYSLER SERVICE DRIVE WILL BE PAID FOR IN LFT.

SCALE 1"=40'

TOPO. NO. 30  
INDEX NO. 6

NO.	DESCRIPTION	DATE
1	TREE REMOVAL REVISED	11/1/71
2	GAS LINE REVISED IN HANCOCK	11/1/71

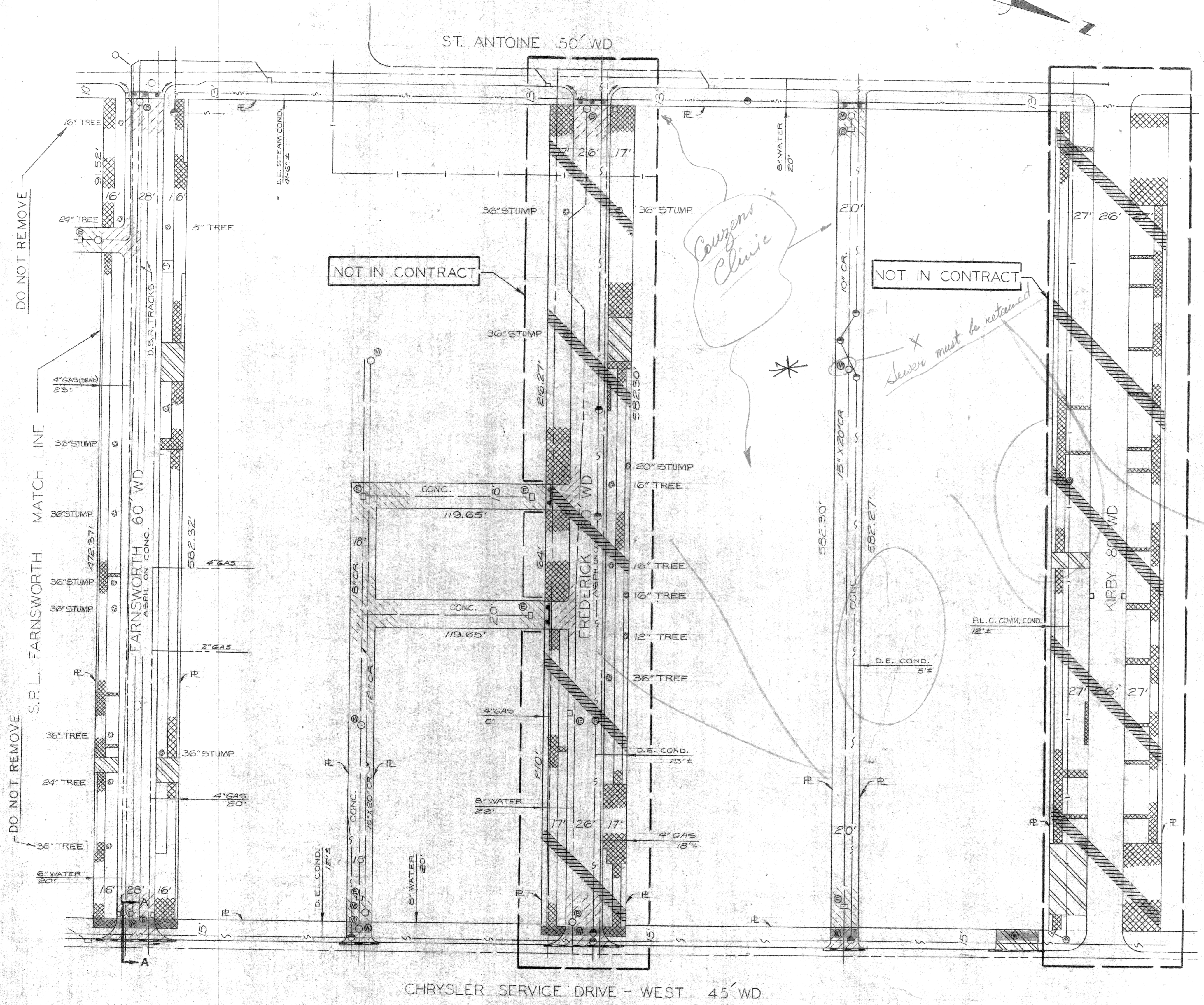
DESIGNED BY	D. E. U.
DRAWN BY	D. E. U.
TRACED BY	
CHECKED BY	TALLEY

APPROVED: *Richard M. ...*  
ENGINEER OF STREETS  
*W. A. ...*  
ACTING ADMINISTRATIVE ENGINEER  
*W. A. ...*  
HEAD, CIVIL ENGINEER

CITY OF DETROIT  
DEPARTMENT OF PUBLIC WORKS  
CITY ENGINEERS OFFICE  
FOR  
DETROIT HOUSING COMMISSION

PAVEMENT REMOVAL AND MISCELLANEOUS CONSTRUCTION  
MEDICAL CENTER  
REHABILITATION PROJECT NO. 3 MICH. R-112  
REMOVAL AND MISCELLANEOUS CONSTRUCTION SHEET

SHEET	3 OF 4 SHEETS
CONTRACT NO.	PW 5799
ASSIGNMENT NO.	AO 1975
DATE	JUNE 9, 1971

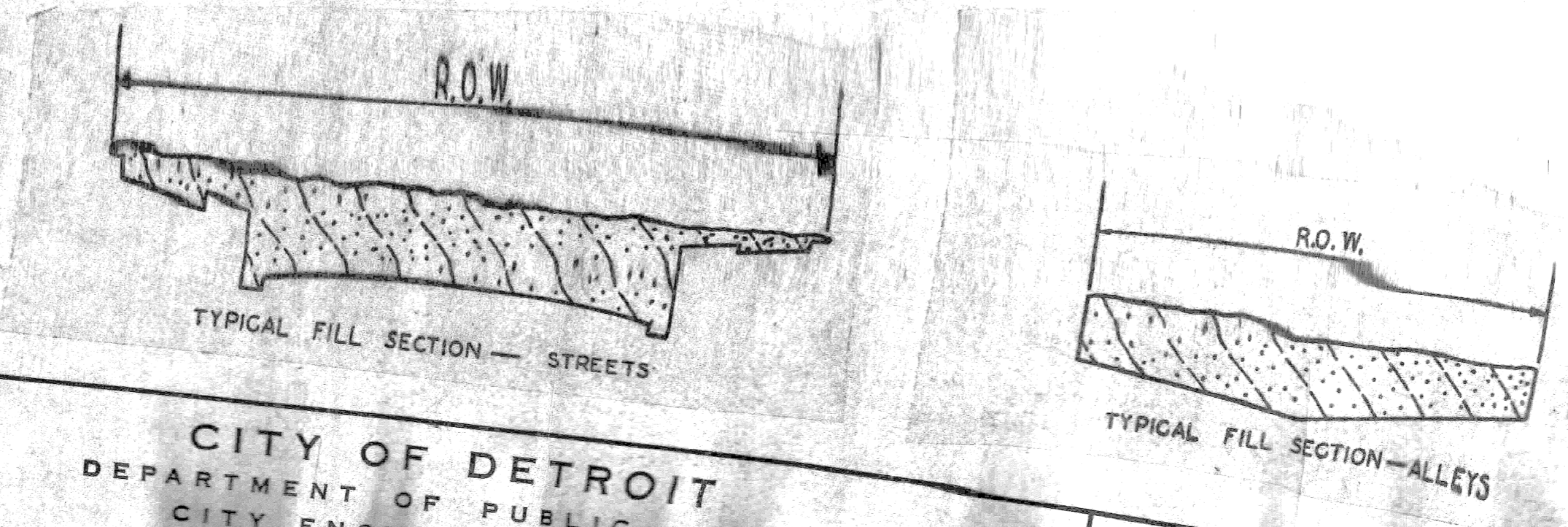


ITEM NO.	DISCRIPTION OF ITEM	UNIT	SH-2	SH-3	SH-4	TOTAL
1	SIDEWALK REMOVAL	SFT	7229	14944	7967	30,040
2	STEET PAVEMENT REMOVAL - UNREINFORCED	SYDS	1971	4214	1631	7816
3	ALLEY PAVEMENT REMOVAL	SYDS	4617	4258	2423	11,298
4	DRIVEWAY REMOVAL	SFT	763	300	1346	2409
5	TREE REMOVAL 4"-12" DIA.	EA.	6	2	1	9
6	TREE REMOVAL 12"-18" DIA.	EA.	4	1	1	6
7	TREE REMOVAL 24" DIA.	EA.	1	1	2	3
8	TREE REMOVAL 26" DIA.	EA.	1			1
9	TREE REMOVAL 30" DIA.	EA.		2		2
10	TREE REMOVAL 36" DIA.	EA.		1	2	3
11	STUMP REMOVAL	EA.	6	3	5	14
12	STREETCAR RAIL REMOVAL	LFT			1165	1165
13	STREETCAR TRACK BASE REMOVAL	SYDS			432	432
14	PERMANENT BARRICADE REMOVAL	EA.		1		1
15	SEPARATE TYPE CURB REMOVAL - REINFORCED	LFT	30	30	24	84
16	CATCH BASIN - ABANDONMENT	EA.	15	12	7	34
17	MANHOLE - ABANDONMENT	EA.	8	2	6	16
18	MANHOLE - ADJUSTMENT	EA.	6	4	1	11
19	GRADING ABANDONED ALLEYS	SYDS	4617	4258	2423	11,298
20	GRADING ABANDONED STREETS	SYDS	3888	7119	3882	14,889
21	SIDEWALKS - 4" STD.	SFT	2499	2268	1077	5794
22	SEPARATE CURB - UNREINFORCED - TYPE II	LFT	164	208	148	520
23	FILL (GRADE A)	SYDS	52	53	23	128
24	SINGLE BEAM BARREL BARRICADE - 12.5' LENGTH	EA.	3	1	4	8
25	SINGLE BEAM BARREL BARRICADE - 25' LENGTH	EA.	1	2	1	4
26	SAWING - JOINTS	LFT	164	208	148	520
27	MAINTAINING TRAFFIC	LUMP SUM				LUMP SUM

- LEGEND**
- STREET PAVEMENT REMOVAL
  - ALLEY PAVEMENT REMOVAL
  - SIDEWALK REMOVAL
  - DRIVEWAY REMOVAL
  - CONSTRUCT STD. 4" CONC. WALK
  - ABANDON EXISTING CATCH BASIN
  - ADJUST EXISTING MANHOLE
  - ABANDON EXISTING SEWER MANHOLE
  - TREE OR STUMP REMOVAL
  - PROPOSED 12.5' SINGLE BEAM BARREL BARRICADE
  - PROPOSED 25' SINGLE BEAM BARREL BARRICADE
  - BARRICADE REMOVAL
  - CONSTRUCT SEPARATE TYPE CURB

NOTE - APPROXIMATELY 1639 CYDS OF SELECTED EXCAVATED MATERIAL REQUIRED FOR THIS SHEET.

SCALE 1"=40'



NO.	DESCRIPTION	DATE
1	TREE REMOVAL REVISED	1/1/74
2	GAS LINE REVISED IN FARNSWORTH	1/1/74

DESIGNED BY	D. G. U.
DRAWN BY	
TRACED BY	
CHECKED BY	TALLEY M. H.

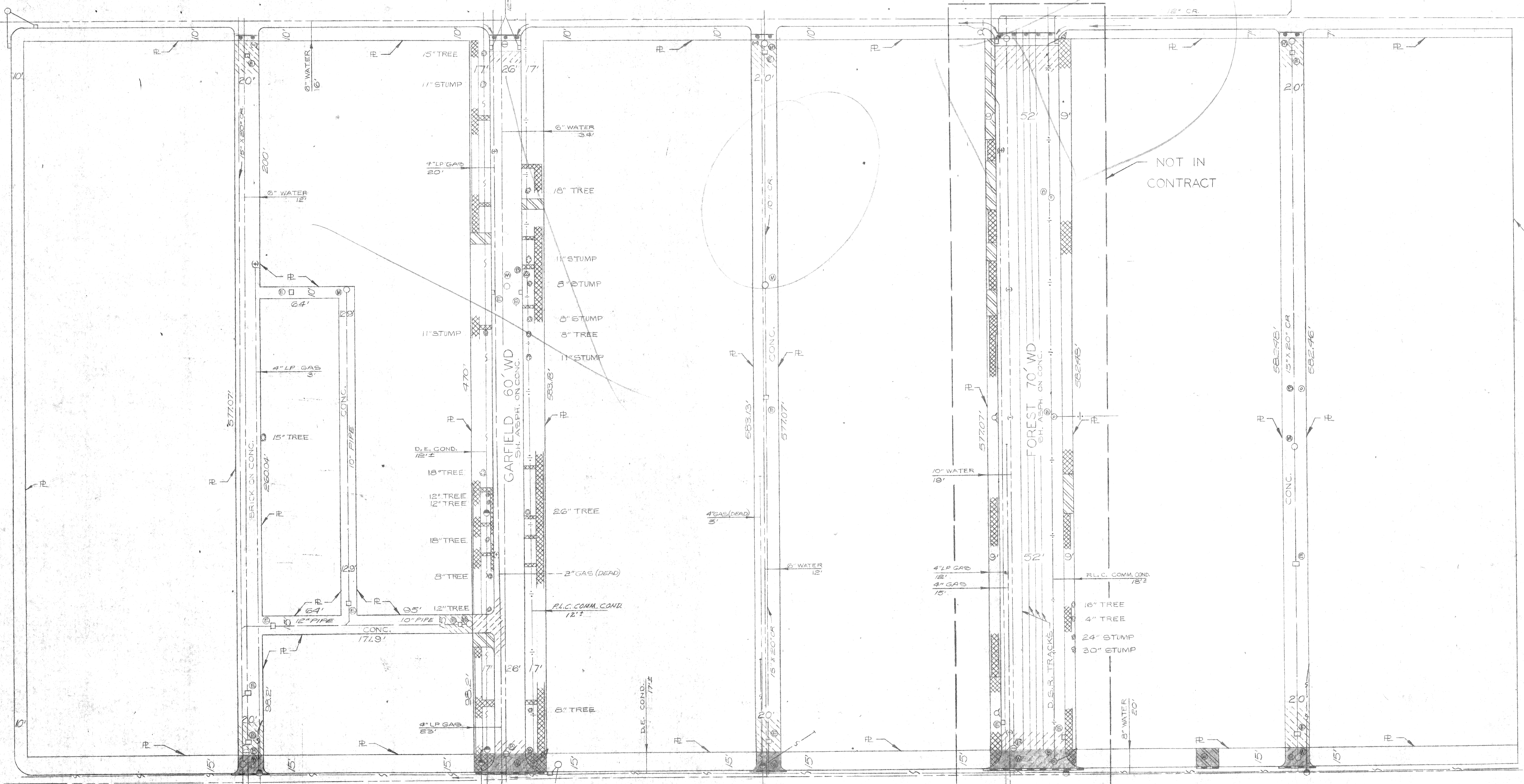
APPROVED:	<i>William M. ...</i>
ENGINEER OF STREETS	
ACTING ADMINISTRATIVE ENGINEER	
HEAD CIVIL ENGINEER	

CITY OF DETROIT  
DEPARTMENT OF PUBLIC WORKS  
CITY ENGINEERS OFFICE

BEFORE STARTING CONSTRUCTION MUST CHECK WITH UTILITIES STRUCTURES WHERE

CANFIELD 60' WD NOT IN CONTRACT

ST. ANTOINE 50' WD



S.P.L. HANCOCK MATCH LINE

FOR LEGEND AND DETAILS SEE SHEET #4

NOTE: SAWING AT ALL RETURNS AND DRIVES ALONG THE CHRYSLER SERVICE DRIVE WILL BE PAID FOR IN LFT.

NOTE - APPROXIMATELY 2236 CYDS OF SELECTED EXCAVATED MATERIAL REQUIRED FOR THIS SHEET.

SCALE 1"=40'

COORD.	DESCRIPTION	DRN	CHKD	APVD	DATE
	REVISIONS LOCATED BY COORDINATES ON SHEET				

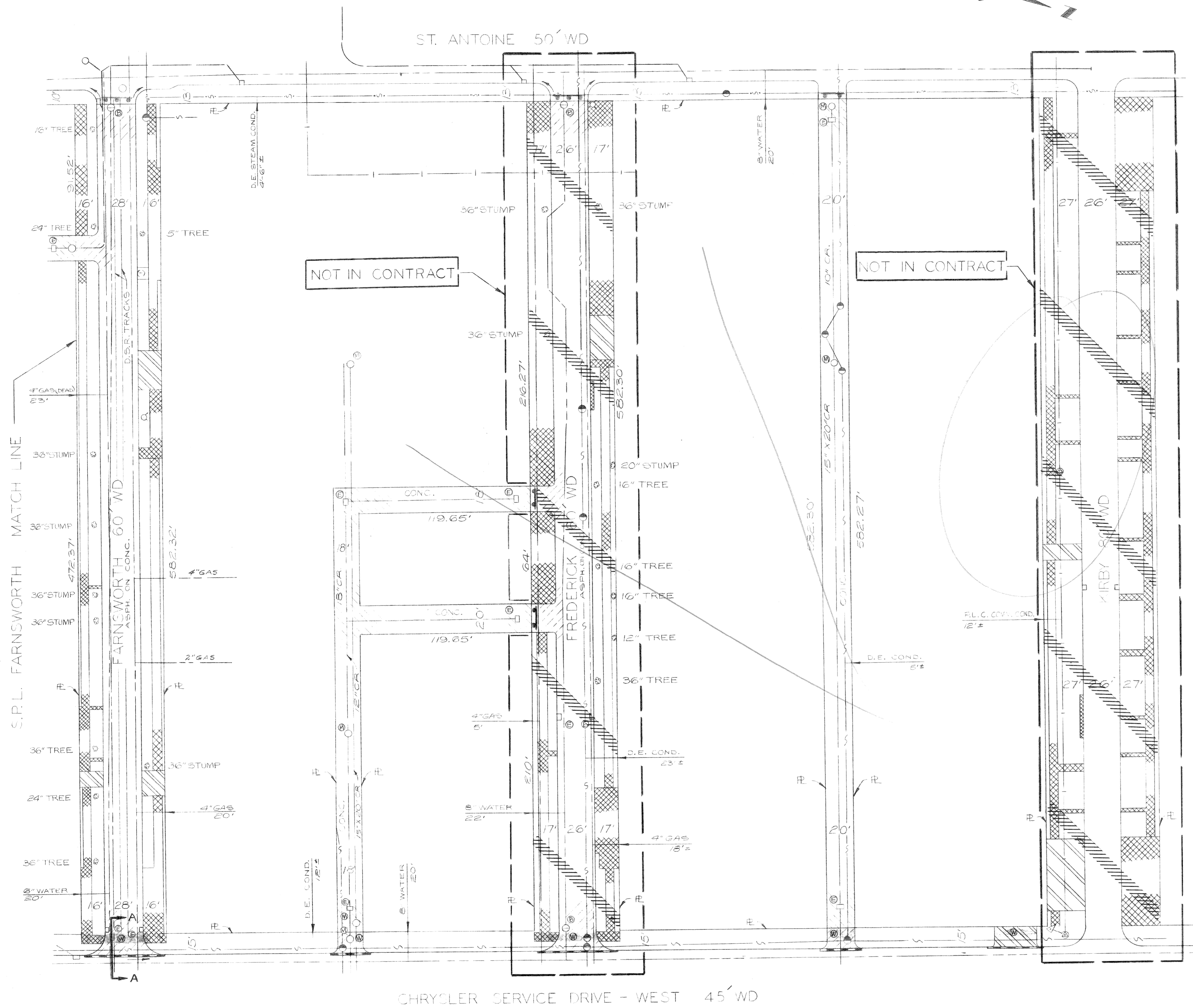
DESIGNED BY	D. Co. U.	APPROVED:	<i>J. Erickson</i> ENGINEER OF STREETS
DRAWN BY			<i>W. B. Cannon</i> HEAD CIVIL ENGINEER
TRACED BY			<i>W. B. Cannon</i> HEAD CIVIL ENGINEER
CHECKED BY	TALLEY M. KAWADA		

CITY OF DETROIT  
DEPARTMENT OF PUBLIC WORKS  
CITY ENGINEERS OFFICE  
FOR  
DETROIT HOUSING COMMISSION

PAVEMENT REMOVAL AND MISCELLANEOUS CONSTRUCTION  
MEDICAL CENTER  
REHABILITATION PROJECT NO. 3 MICH. R-112  
REMOVAL AND MISCELLANEOUS CONSTRUCTION SHEET

TOPO. NO. 30	SHEET 2 OF 4 SHEETS
INDEX NO. 6	CONTRACT No. PW 5799
	ASSIGNMENT No. AO 1975
	DATE JUNE 9, 1971

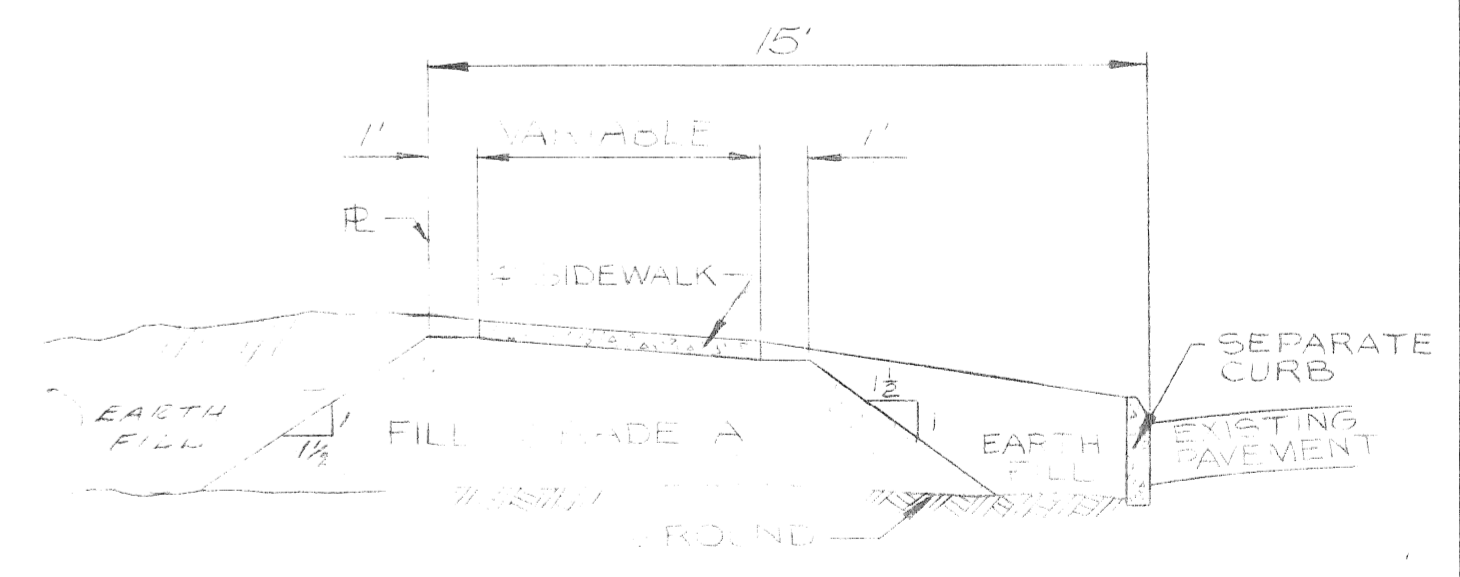




ITEM NO.	DESCRIPTION OF ITEM	UNIT	SH 2	SH 3	SH 4	TOTAL
1	SIDEWALK REMOVAL	SFT	7123	13944	7967	32040
2	STREET PAVEMENT REMOVAL - UNREINFORCED	SYDS	1971	4213	1631	7816
3	ALLEY PAVEMENT REMOVAL	SYDS	4617	4258	2428	14299
4	DRIVEWAY REMOVAL	SFT	763	300	1346	2400
5	TREE REMOVAL 4" DIA.	EA	6	2	1	9
6	TREE REMOVAL 12" DIA.	EA	4	1	1	6
7	TREE REMOVAL 24" DIA.	EA	1	1	2	3
8	TREE REMOVAL 36" DIA.	EA	1	1	1	3
9	TREE REMOVAL 50" DIA.	EA	1	2	1	4
10	TREE REMOVAL 36" DIA.	EA	1	1	2	4
11	STUMP REMOVAL	EA	6	3	5	14
12	STREETCAR RAIL REMOVAL	LF			1165	1165
13	STREETCAR TRACK BASE REMOVAL	SYDS			432	432
14	PERMANENT BARRICADE REMOVAL	EA		1		1
15	SEPARATE TYPE CURB REMOVAL - REINFORCED	LF	30	20	24	84
16	CATCH BASIN - ABANDONMENT	EA	18	19	7	44
17	MANHOLE - ABANDONMENT	EA	8	2	6	16
18	MANHOLE - ADJUSTMENT	EA	6	4	1	11
19	GRADING ABANDONED ALLEYS	SYDS	4617	4258	2428	14299
20	GRADING ABANDONED STREETS	SYDS	3088	713	3887	14090
21	SIDEWALKS 4" STD.	SFT	2493	2268	1017	5784
22	SEPARATE CURB - UNREINFORCED - TYPE II	LF	164	208	148	520
23	FILL (GRADE A)	SYDS	52	89	23	134
24	SINGLE BEAM BARREL BARRICADE - 12' LENGTH	EA	3	1	4	8
25	SINGLE BEAM BARREL BARRICADE - 25' LENGTH	EA	1	2	1	4
26	SAVING - JOINTS	LF	164	208	148	520
27	MAINTAINING TRAFFIC	LUMP SUM				

- LEGEND**
- [Hatched Box] STREET PAVEMENT REMOVAL
  - [Hatched Box] ALLEY PAVEMENT REMOVAL
  - [Hatched Box] SIDEWALK REMOVAL
  - [Hatched Box] DRIVEWAY REMOVAL
  - [Circle with 'C'] CONSTRUCT STD. 4" CONC. WALK
  - [Circle with 'A'] ABANDON EXISTING CATCH BASIN
  - [Circle with 'M'] ADJUST EXISTING MANHOLE
  - [Circle with 'S'] ABANDON EXISTING SEWER MANHOLE
  - [Circle with 'T'] TREE OR STUMP REMOVAL
  - [Line with 'S'] PROPOSED 12.5' SINGLE BEAM BARREL BARRICADE
  - [Line with 'L'] PROPOSED 25' SINGLE BEAM BARREL BARRICADE
  - [Line with 'C'] BARRICADE REMOVAL
  - [Line with 'C'] CONSTRUCT SEPARATE TYPE CURB

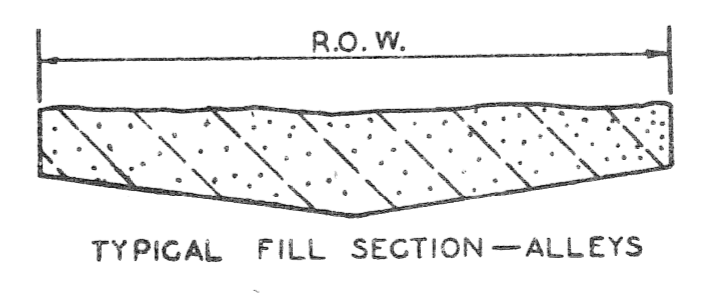
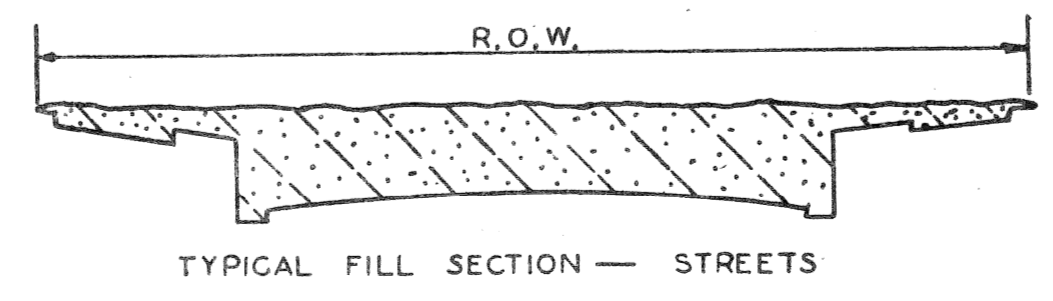
**NOTES:**  
 WHERE CALLED FOR ON THE PLANS, REMOVE THE EXISTING STREET PAVEMENT, CURBS, SIDEWALKS, DRIVEWAYS, TREES AND ALLEY PAVEMENT WITHIN THE RIGHT OF WAY UNLESS OTHERWISE NOTED.  
 SAWING AT ALL RETURNS AND DIVES ALONG THE CHRYSLER SERVICE DRIVE WILL BE PAID FOR IN L.F.T.  
 ALL R.L.C. OVERHEAD AND UNDERGROUND LINES ARE TO REMAIN INTACT.



SECTION A-A  
 CURB AND SIDEWALK DETAIL  
 SCALE: 1"=40'

NOTE - APPROXIMATELY 1859 CYDS OF SELECTED EXCAVATED MATERIAL REQUIRED FOR THIS SHEET.

SCALE 1"=40'



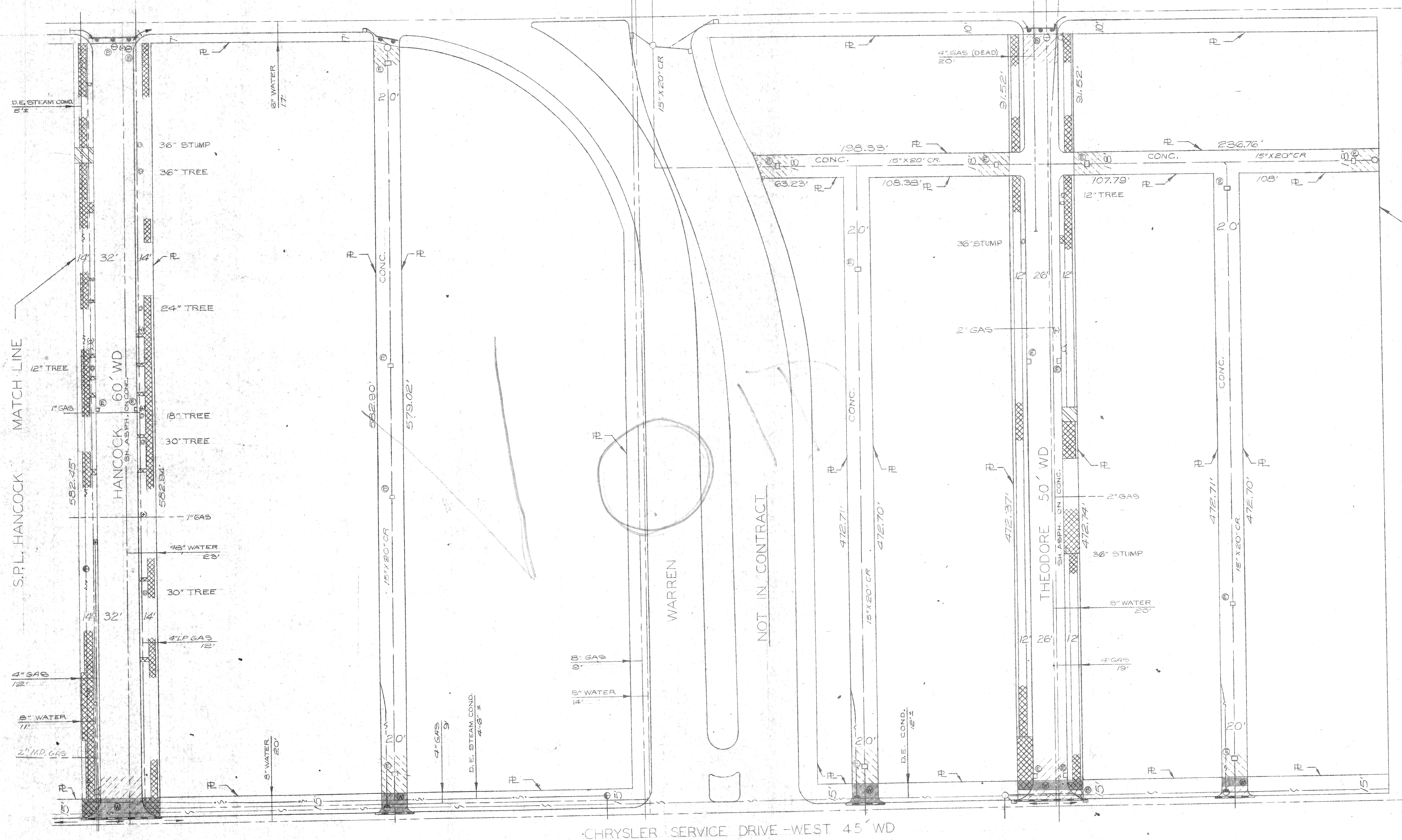
DESIGNED BY	APPROVED:
DRAWN BY	ENGINEER OF STREETS
TRACED BY	ENGINEER OF EXPRESSWAYS
CHECKED BY	ACTING ADMINISTRATIVE ENGINEER
	HEAD CIVIL ENGINEER

**CITY OF DETROIT**  
 DEPARTMENT OF PUBLIC WORKS  
 CITY ENGINEERS OFFICE  
 FOR  
 DETROIT HOUSING COMMISSION

PAVEMENT REMOVAL AND MISCELLANEOUS CONSTRUCTION  
 MEDICAL CENTER  
 REHABILITATION PROJECT NO. 3 - MICH. R-112  
 REMOVAL AND MISCELLANEOUS CONSTRUCTION, DETAILS AND QUANTITIES

TOPG. NO. 30
INDEX NO. 6
SHEET 4 OF 4 SHEETS
CONTRACT NO. PW 5799
APPROVED DATE AG 1975
DATE JUNE 9, 1971

ST. ANTOINE 50' WD



NOTE—  
APPROXIMATELY 3515 CYDS OF  
SELECTED EXCAVATED MATERIAL  
REQUIRED FOR THIS SHEET.

FOR LEGEND AND DETAILS  
SEE SHEET #4

NOTE:  
SAWING AT ALL RETURNS AND DRIVES  
ALONG THE CHRYSLER SERVICE  
DRIVE WILL BE PAID FOR IN LFT.

SCALE 1"=40'

NO.	DATE	DESCRIPTION

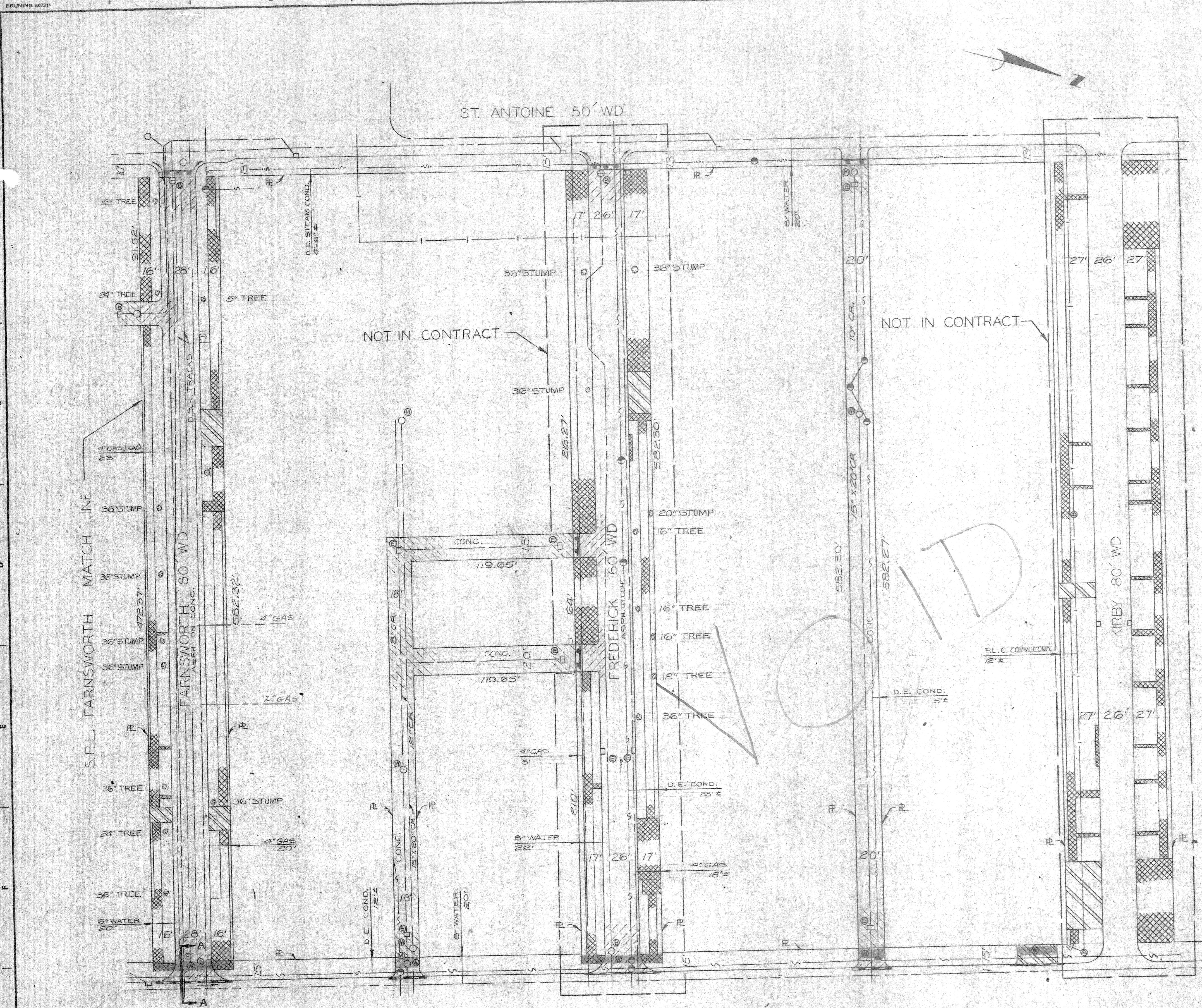
DESIGNED BY	D. E. U.
DRAWN BY	
TRACED BY	
CHECKED BY	TALLEY, M. K.

APPROVED:	<i>Richard Allen Proger</i>
ENGINEER OF STREETS	
ENGINEER OF EXPRESSWAYS	
ALTERNATE ADMINISTRATIVE ENGINEER	
HEAD OF CIVIL ENGINEER	

CITY OF DETROIT  
DEPARTMENT OF PUBLIC WORKS  
CITY ENGINEERS OFFICE  
FOR  
DETROIT HOUSING COMMISSION

PAVEMENT REMOVAL AND MISCELLANEOUS CONSTRUCTION  
MEDICAL CENTER  
REHABILITATION PROJECT NO. 3, MICH. R-112  
REMOVAL AND MISCELLANEOUS CONSTRUCTION SHEET

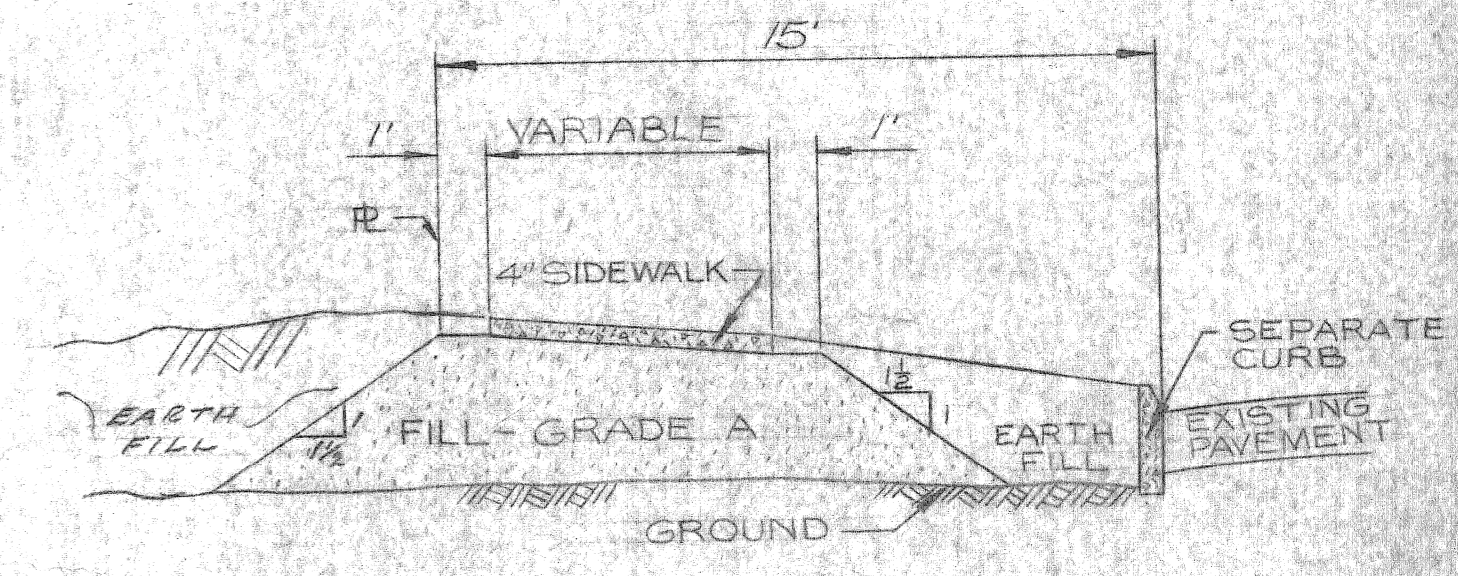
TOPO NO.	30
INDEX NO.	6
SHEET	3 OF 4 SHEETS
CONTRACT NO.	PW 5799
ASSIGNMENT NO.	AO 1975
DATE	JUNE 9, 1971



ITEM NO.	DESCRIPTION OF ITEM	UNIT	SH-2	SH-3	SH-4	TOTAL
1	SIDEWALK REMOVAL	SFT	7229	1484	7967	30,440
2	STEEL PAVEMENT REMOVAL - UNREINFORCED	SYDS	1971	4214	1601	7416
3	ALLEY PAVEMENT REMOVAL	SYDS	4617	4258	2823	11,295
4	DRIVEWAY REMOVAL	SFT	763	300	1346	2400
5	TREE REMOVAL 4"-12" DIA.	EA.	6	2	1	9
6	TREE REMOVAL 18"-18" DIA.	EA.	4	1	1	6
7	TREE REMOVAL 24" DIA.	EA.	1	1	2	3
8	TREE REMOVAL 26" DIA.	EA.	1	2	1	4
9	TREE REMOVAL 30" DIA.	EA.	1	1	2	4
10	TREE REMOVAL 36" DIA.	EA.	6	3	5	14
11	STUMP REMOVAL	LFT			1165	1165
12	STREETCAR RAIL REMOVAL	SYDS			432	432
13	STREETCAR TRACK BASE REMOVAL	SYDS			432	432
14	PERMANENT BARRICADE REMOVAL	LFT	30	30	24	84
15	SEPARATE TYPE CURB REMOVAL - REINFORCED	EA.	13	12	7	41
16	CATCH BASIN - ABANDONMENT	EA.	6	2	6	14
17	MANHOLE - ABANDONMENT	EA.	6	4	1	11
18	MANHOLE - ADJUSTMENT	EA.	6	4	1	11
19	GRADING ABANDONED ALLEYS	SYDS	4617	4258	2413	11,295
20	GRADING ABANDONED STREETS	SYDS	3688	7119	3082	14,889
21	SIDEWALKS - 4" STD.	SFT	2499	2268	1217	5784
22	SEPARATE CURB - UNREINFORCED - TYPE II	LFT	164	209	148	521
23	FILL (GRADE A)	CYOS	52	59	23	134
24	SINGLE BEAM BARREL BARRICADE - 12.5' LENGTH	EA.	3	1	4	8
25	SINGLE BEAM BARREL BARRICADE - 25' LENGTH	EA.	1	2	1	4
26	SANING - JOINTS	LFT	164	209	148	521
27	MAINTAINING TRAFFIC	LUMP SUM				LUMP SUM

- LEGEND**
- STREET PAVEMENT REMOVAL
  - ALLEY PAVEMENT REMOVAL
  - SIDEWALK REMOVAL
  - DRIVEWAY REMOVAL
  - CONSTRUCT STD. 4" CONC. WALK
  - ABANDON EXISTING CATCH BASIN
  - ADJUST EXISTING MANHOLE
  - ABANDON EXISTING SEWER MANHOLE
  - TREE OR STUMP REMOVAL
  - PROPOSED 12.5' SINGLE BEAM BARREL BARRICADE
  - PROPOSED 25' SINGLE BEAM BARREL BARRICADE
  - BARRICADE REMOVAL
  - CONSTRUCT SEPARATE TYPE CURB

**NOTES:**  
 WHERE CALLED FOR ON THE PLANS, REMOVE THE EXISTING STREET PAVEMENT, CURBS, SIDEWALKS, DRIVEWAYS, TREES AND ALLEY PAVEMENT WITHIN THE RIGHT OF WAY UNLESS OTHERWISE NOTED.  
 SAWING AT ALL RETURNS AND DRIVES ALONG THE CHEVSEER SERVICE DRIVE WILL BE PAID FOR IN LFT.

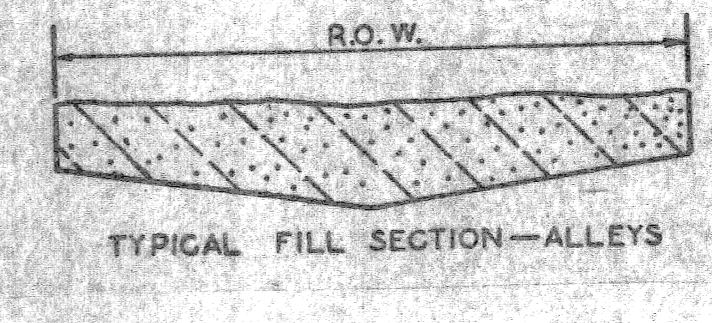
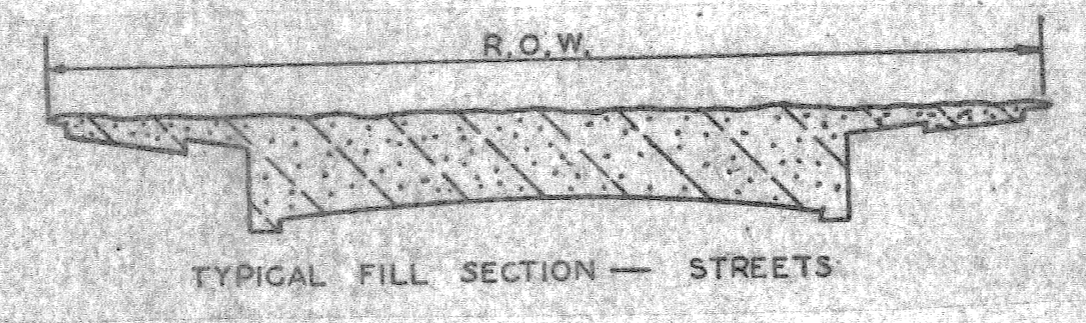


SECTION A-A  
 TYPICAL SEPARATE CURB AND SIDEWALK DETAIL  
 SCALE: 1"=40"

BEFORE STARTING CONSTRUCTION CONTRACTOR MUST CHECK WITH UTILITIES FOR LOCATIONS OF EXISTING STRUCTURES WHETHER OR NOT INDICATED ON PLANS.

NOTE - APPROXIMATELY 1555 CYDS OF SELECTED EXCAVATED MATERIAL REQUIRED FOR THIS SHEET.

SCALE 1"=40'



DESIGNED BY	D. G. U.	APPROVED:	<i>J. Erickson</i>
DRAWN BY		ENGINEER OF STREETS	
TRACED BY		ENGINEER OF EXPRESSWAYS	
CHECKED BY	<i>TALLEY H. K...</i>	ACTING ADMINISTRATIVE ENGINEER	
		READ CIVIL ENGINEER	

CITY OF DETROIT  
 DEPARTMENT OF PUBLIC WORKS  
 CITY ENGINEERS' OFFICE  
 FOR  
 DETROIT HOUSING COMMISSION

PAVEMENT REMOVAL AND MISCELLANEOUS CONSTRUCTION  
 MEDICAL CENTER  
 REHABILITATION PROJECT NO. 3, MICH. R-112  
 REMOVAL AND MISCELLANEOUS CONSTRUCTION, DETAILS AND QUANTITIES

TOPO. NO.	30
INDEX NO.	6
SHEET	4 OF 4 SHEETS
CONTRACT NO.	PW 5799
ASSIGNMENT NO.	AO 1975
DATE	JUNE 9, 1971