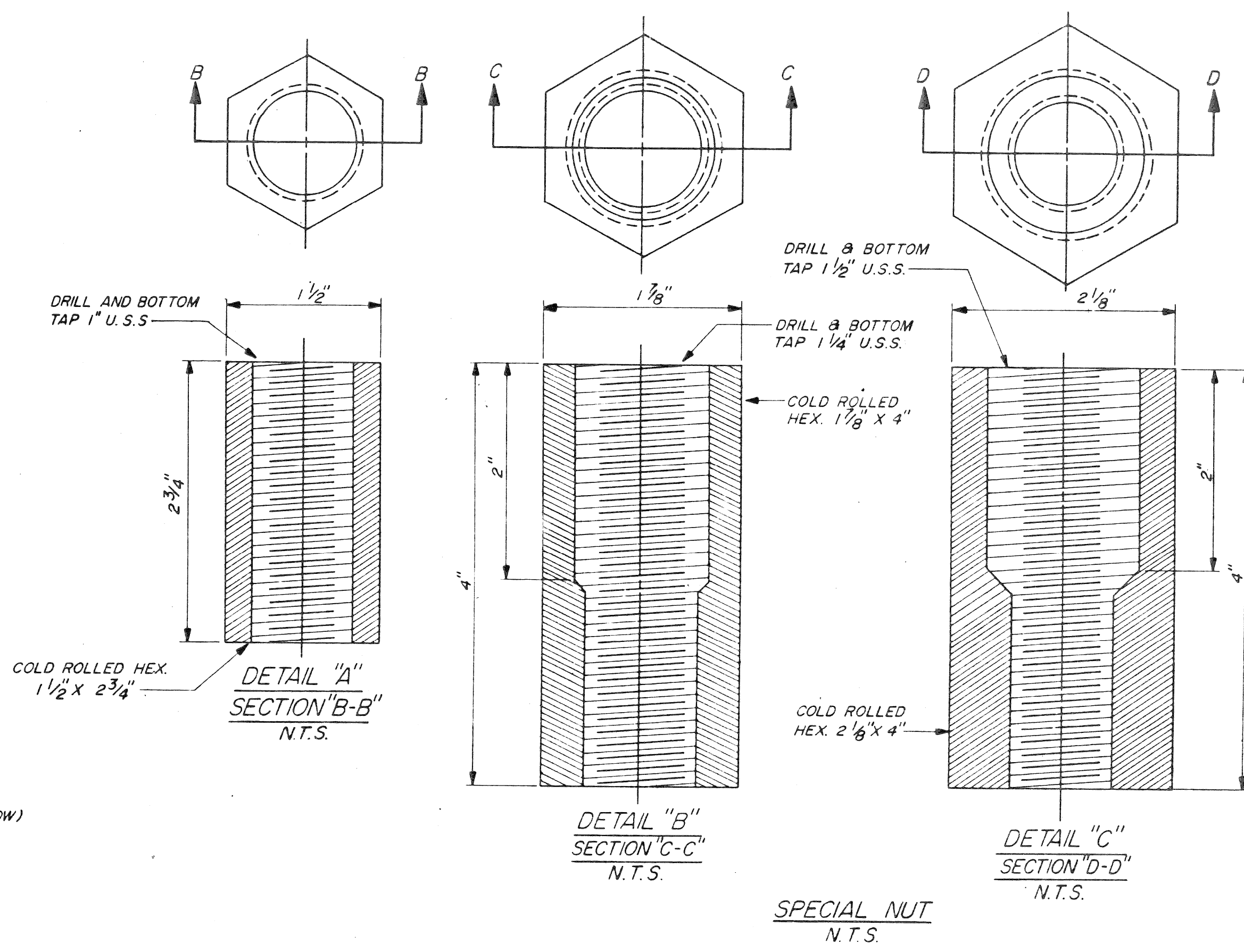


NOTE:

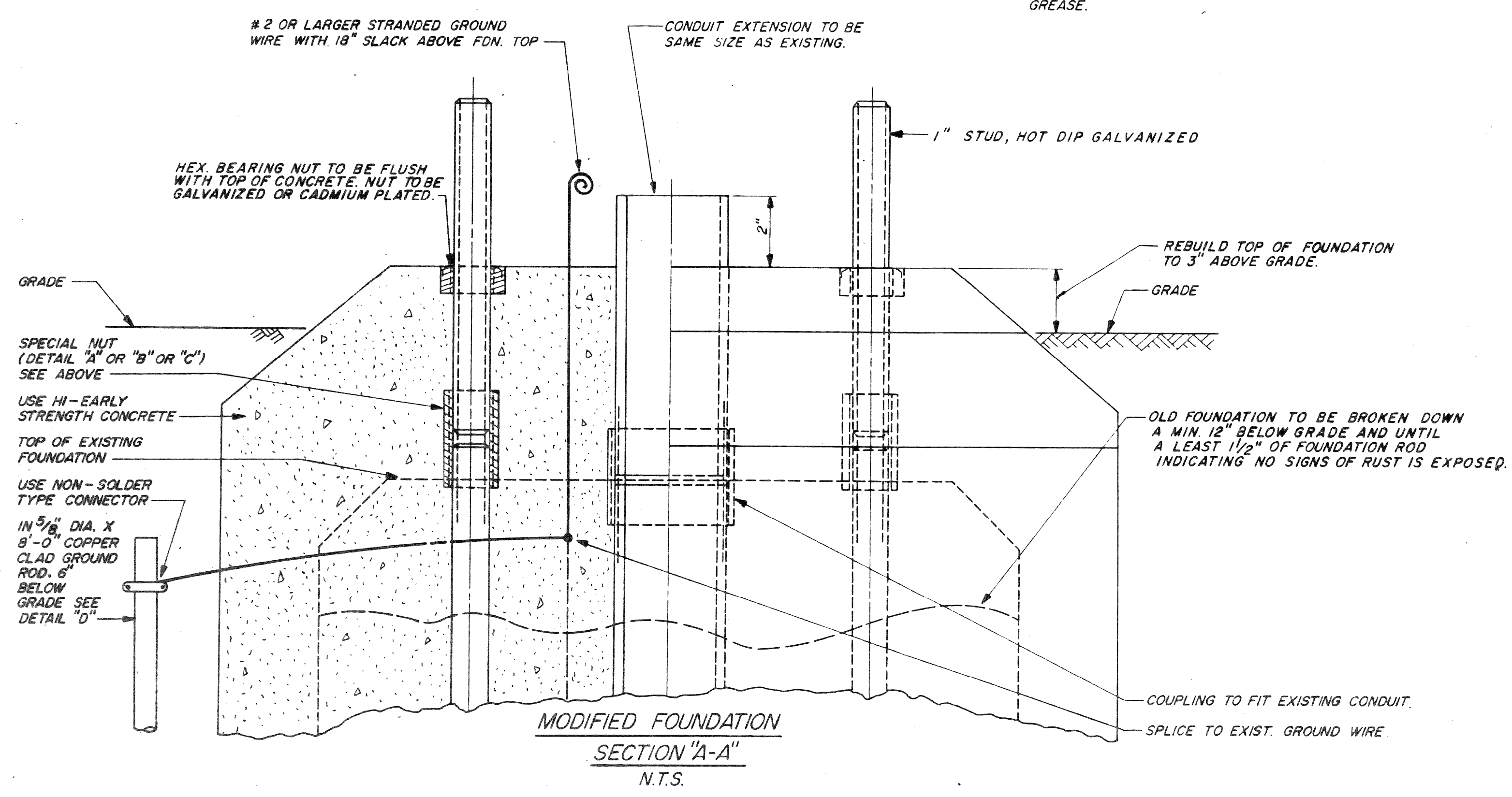
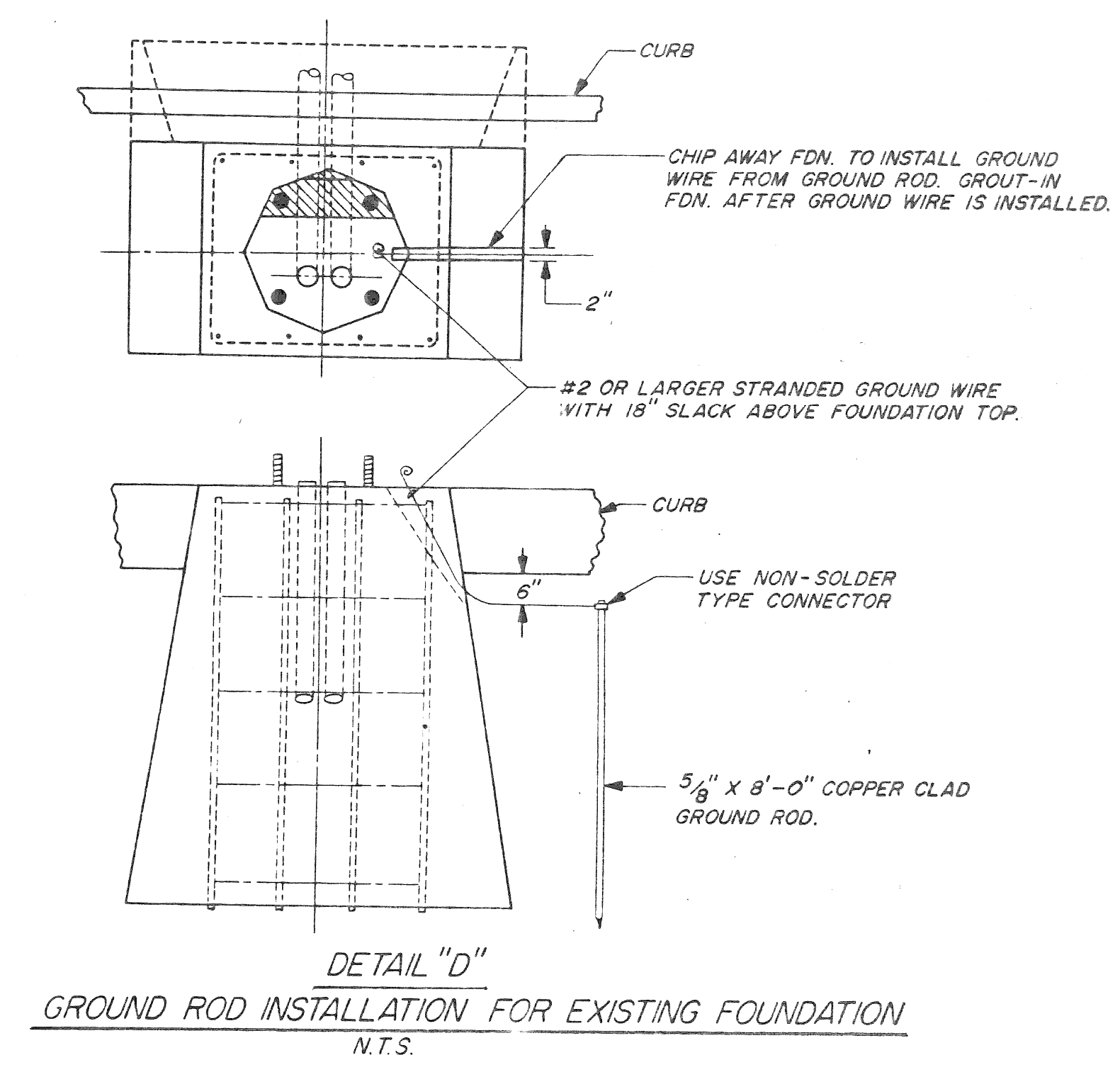
THE TOP OF FOUNDATION SHALL EXTEND 1" BEYOND THE CAST FLANGED BASE OF THE STREET LIGHTING STANDARD.

PLAN FOUNDATION  
N.T.S.



NOTES:

1. REMOVE LIGHTING STANDARD.
2. CHIP OFF TOP OF FOUNDATION. (SEE DRWG.)
3. CHASE THREADS ON FOUNDATION BOLTS 1 3/8".
4. EXTEND CONDUIT (SEE DRWG.)
5. INSTALL SPECIAL NUTS (SHOWN IN DETAIL). THREADED STUDS AND BEARING NUTS.
6. COAT TOP OF FOUNDATION WITH A BONDING AGENT.
7. MOUNT THE FORM AND POUR THE CONCRETE.
8. COAT BOLTS AND NUTS WITH "NO-OX-10" GREASE.



ALL FOUNDATION CAPS SHALL HAVE A SMOOTH FINISH WITH BEVELED EDGES & SHALL BE SHAPED TO ALLOW COMPLETE DRAINAGE OF WATER. ANCHOR BOLT PROJECTIONS ABOVE CAP SHALL BE CLEANED OF ALL CONCRETE & FULLY USABLE THEIR FULL LENGTH.

PAY ITEM:  
ADJUST LIGHT FD. - 1 EACH

DATE	DESCRIPTION	CHKD. BY	8	COBO HALL AREA STREET IMPROVEMENTS	SHEET 17 OF 21 SHEETS	DRAWN BY	PLAN PREPARED BY CONSULTING ENGINEERING ASSOCIATES INC. ENGINEERING CONSULTANTS	CHECKED BY	PUBLIC LIGHTING DEPARTMENT	FILE NO.
11-3-86	CHANGED FOUNDATION TOP									
				LIGHT FOUNDATION MODIFICATION DETAILS	CONTRACT NO. PW-6780	APPROVED BY	6580 WYOMING DETROIT, MICH. 48221	APPROVED BY	CITY OF DETROIT	SHEET NO. 17 OF 21
					ASSIGNMENT NO. 87-60-07	DATE MAY, 1989	DRWG. NO.	APPROVED BY		DATE











COBO HALL AREA STREET IMPROVEMENTS

LEGAL NEWS BUILDING RENOVATION, REFERENCE DRAWING R-2

A.O. 87-60-07 CONTRACT NO. PW-6780 SHEET 20 OF 21 DATE MAY, 1989

Harley Ellington Pierce Yee Associates, Inc. 26913 Northwestern Highway Suite 200 Southfield, Michigan 48034 313 262 1500



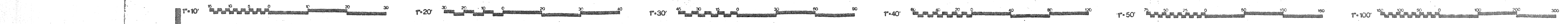
BOWNE Bowne of Detroit Inc. 818 Second Avenue, Detroit, Michigan 48226

Renovation

VAULT AREA SERVICE LOCATIONS

DATE: 1/26/88

Drawn By: <b>AVC</b>	Project Number:
Checked By:	<b>10781</b>
Approved By:	
Drawing Number:	<b>R-2</b>

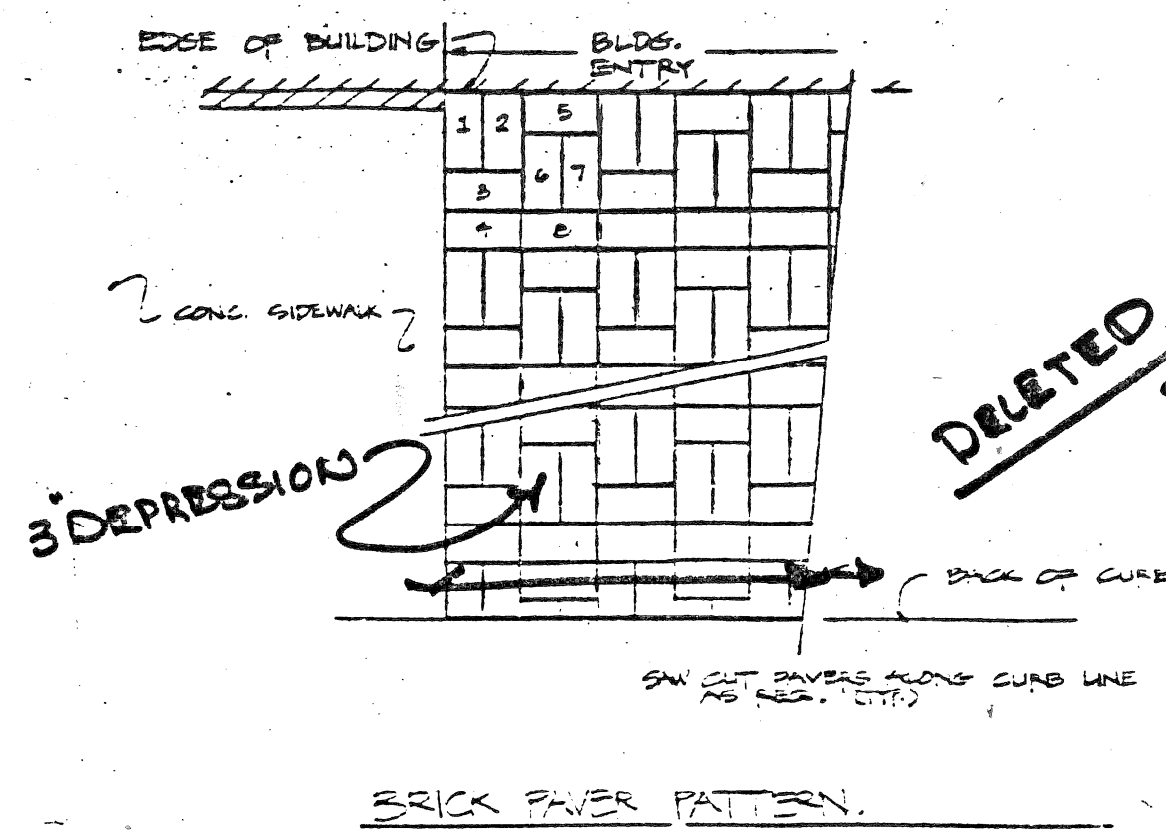
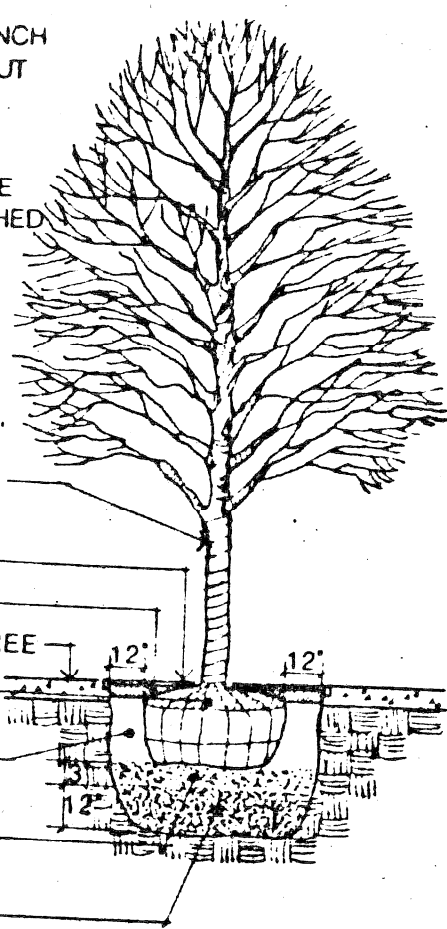


NOTE: CUT BACK BRANCH SYSTEM 25%. NEVER CUT LEADER

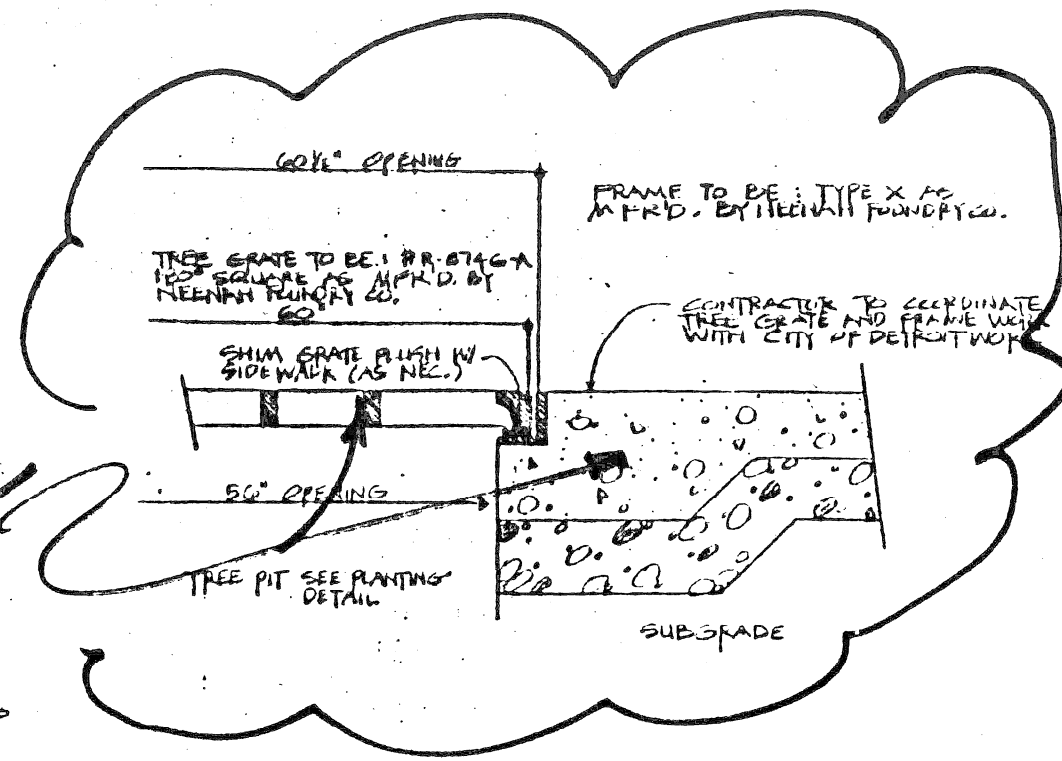
TREE SHALL BEAR SAME RELATIONSHIP TO FINISHED GRADE AS IT BORE TO PREVIOUSLY EXISTING GRADE.

- BRANCHING HEIGHT 6'
- TREE WRAP - SECURE WITH TWINE
- TREE GRATE
- 3" MULCH
- SIDEWALK AROUND TREE
- REMOVE BURLAP FROM TOP OF BALL
- PLANTING MIXTURE (SEE SPECIFICATIONS)
- COMPACTED PLANTING MIXTURE
- COMPACTED CLAY LOAM TOPSOIL

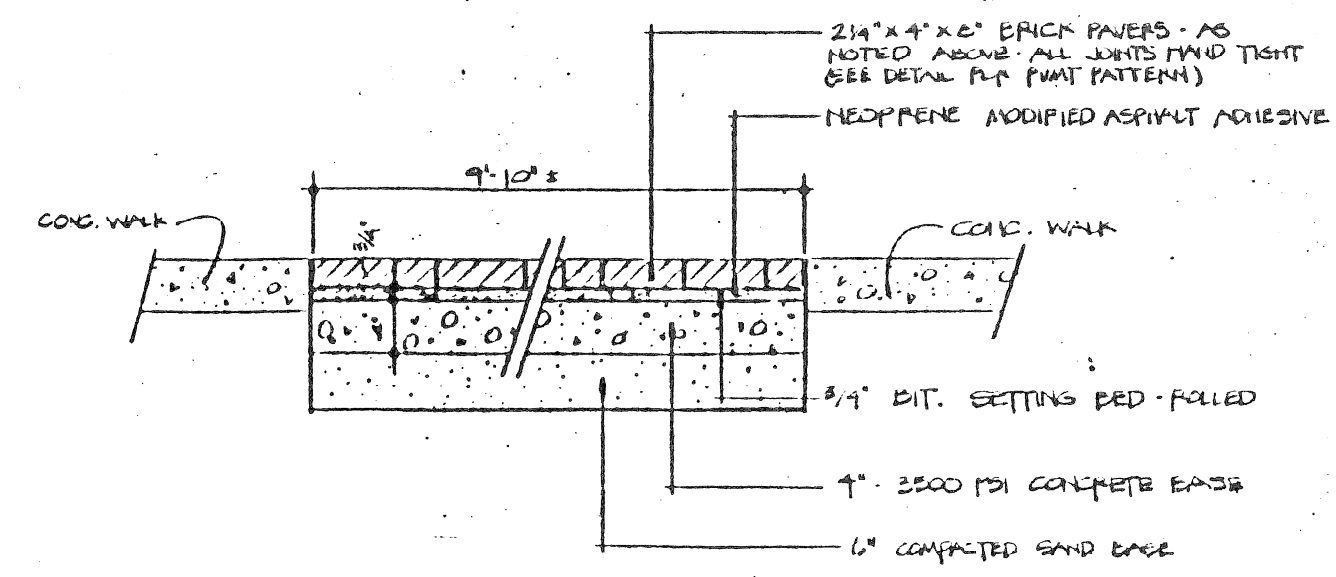
TREE IN GRATE PLANTING DETAIL NO SCALE



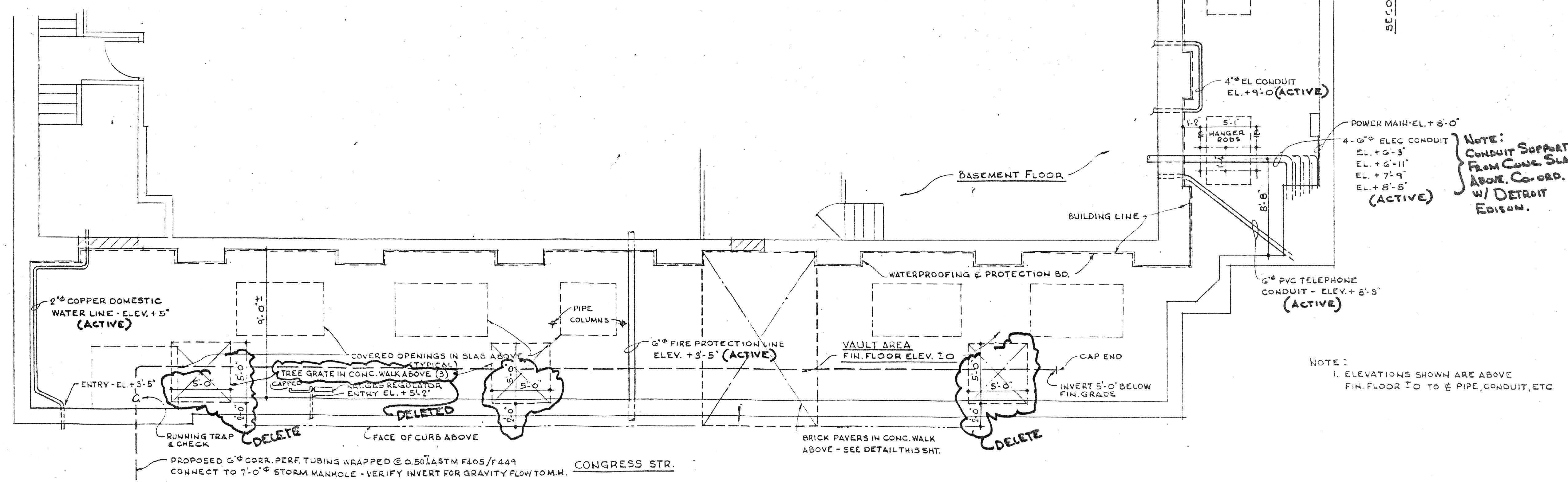
BRICK PAVER PATTERN



TREE GRATE



BRICK PAVT. ON CONC. BASE



VAULT AREA PLAN SCALE: 1/4\"/>

Composh Drawing Aids  
Basic Drawing Identification  
Blue Drawing Toner





NO.	DESCRIPTION	UNIT	SHT. NO. 2			SHT. NO. 3	SHT. NO. 4	SHT. NO. 6	SHT. NO. 7	SHT. NO. 11	SHT. NO. 10		SHT. NO. 12	SHT. NO. 13	SHT. NO. 14	SHT. NO. 15 AND 16	SHT. NO. 16	TOTAL
			THIRD	FIRST	CASS						S.O.F.FORT	N.O.F.FORT						
1	EXCAVATION	CYDS				200												200
2	FILL - (GRADE A)	CYDS				439					222							661
3	FILL - (22A)	CYDS					151											151
4	SIDEWALK REMOVAL	SFT				203		2,814		2,685								5,702
5	DRIVEWAY REMOVAL	SFT				234		1,068		630		400						2,332
6	STREET PAVEMENT REMOVAL	SYDS				1,202												1,202
7	REMOVE BITUMINOUS SURFACE	SYDS	256	871	184			2,883		1,497	447							6,138
8	REMOVE EXISTING CONCRETE BASE	SYDS	10	25	5			110		10	10							170
9	SEPERATE TYPE CURB REMOVAL	LFT								268	241							509
10	REINFORCED CONCRETE SLAB REMOVAL	SYDS									66							198
11	INTEGRAL CURB AND SIDEWALK REMOVAL - 2 FT. WIDE	LFT						164										164
12	INTEGRAL CURB AND SIDEWALK REMOVAL - 4 TO 6 FT WIDE	LFT						189										189
13	RESETTING MANHOLES	EACH	4	8	4			22		11	3							52
14	MANHOLE ADJUSTMENT	EACH		1		10		2		1	2							16
15	MANHOLE - RECONSTRUCT CONE	EACH																
16	DROP MANHOLE	EACH						1										1
17	RESET CATCH BASIN	EACH						4		3	2							9
18	CATCH BASIN ADJUSTMENT	EACH				1		2										3
19	RESET STOP BOXES	EACH		1	1			5		2								9
20	ADJUST STOP BOXES	EACH				2		1										3
21	CATCH BASIN "A"	EACH						2										2
22	CATCH BASIN "BT" ("B" WITH TRAP)	EACH						2										2
23	18" x 12" SPECIAL "Y" CATCH BASIN	EACH						2										2
24	CATCH BASIN "L"	EACH						1										1
25	12" CLASS III SEWER PIPE	LFT						370										370
26	12" CLASS IV SEWER PIPE	LFT						5										5
27	CLEANING STRUCTURES	EACH						7										7
28	4" SIDEWALK REPLACEMENT	SFT						2,303			1,045	224						3,572
29	SEPERATE TYPE CURB REPLACEMENT	LFT							165									165
30	MODIFIED CURB REPLACEMENT	LFT		10						15		416						441
31	INTEGRAL CURB AND 4" SIDEWALK REPLACEMENT - 4' WIDE	LFT										35						35
32	REPLACE CONCRETE BASE WITH GRADE A CONCRETE	SYDS	10	25	5				110	10	10							170
33	4" STANDARD SIDEWALK	SFT							7,793	1,085	593	320						9,796
34	6" STANDARD SIDEWALK	SFT						715	728	829	69	42						2,333
35	BITUMINOUS WALK	SFT						1,542	214									1,756
36	BASE PAVEMENT - 9" UNIFORM REINFORCED CONCRETE WITH INTEGRAL CURB	SYDS						1,292										1,292
37	INTEGRAL CURB AND 4" SIDEWALK - 2 - 2.5 FT. WIDE	LFT							789	192	235							1,216
38	INTEGRAL CURB AND 4" SIDEWALK - 6 FT. WIDE	LFT							15									15
39	INTEGRAL CURB AND 6" SIDEWALK - 2 FT. WIDE	LFT							93	78								171
40	INTEGRAL CURB AND 6" SIDEWALK - 6 FT WIDE	LFT							150									150
41	8" CONCRETE DRIVEWAY	SFT						549	1087	690								2,326
42	TEST CORES	EACH						1										1
43	JOINT SAWING	LFT						10	10	10	10	92						132
44	PREFORMED WHITE THERMOPLASTIC PAVEMENT MARKINGS - 4"	LFT										439						439
45	PREFORMED YELLOW THERMOPLASTIC PAVEMENT MARKINGS - 4"	LFT										3,518						3,518
46	PREFORMED WHITE THERMOPLASTIC PAVEMENT MARKINGS - 6"	LFT										1,693						1,693
47	PREFORMED WHITE THERMOPLASTIC PAVEMENT MARKINGS - 18"	LFT										371						371
48	PREFORMED WHITE THERMOPLASTIC PAVEMENT MARKING LETTERS	EACH										4						4
49	PREFORMED WHITE THERMOPLASTIC PAVEMENT MARKING SYMBOLS	EACH										1						1
50	SIDEWALK RAMP	LUMP SUM															LUMP SUM	LUMP SUM
51	CONCRETE WALL - C1	LUMP SUM															LUMP SUM	LUMP SUM
52	CONCRETE WALL - C2	LUMP SUM															LUMP SUM	LUMP SUM
53	CONCRETE WALL - C3	LUMP SUM															LUMP SUM	LUMP SUM
54	ADJUST LIGHT FOUNDATION (SHEET 17)	EACH																1
55	CONDITIONING	SYDS	72	72	28						89							261
56	CLEANING	SYDS	650	257	28						846							1,781
57	STRIPPING	SYDS	24	20	11						19							74
58	SHEET ASPHALT WEARING SURFACE	TONS										33						33
59	WEARING SURFACE	TONS																
	a) 31 A (CD) NATURAL 1" AVERAGE THICKNESS	TONS	54	77	28			146	159	82	72							618
	b) 31 A (CD) SLAG 1" AVERAGE THICKNESS	TONS	51	73	26			138	150	78	68							584
60	BINDER COURSE MIXTURE	TONS																
	a) 25 A (MOD) - NATURAL 1 1/2" AVERAGE THICKNESS	TONS	81	116	42			218	238	124	108							927
	b) 25 A (MOD) - SLAG 1 1/2" AVERAGE THICKNESS	TONS	74	106	38			200	218	113	99							848
61	BITUMINOUS BOND COAT	GAL	147	211	76			397	432	225	196							1,684
62	MAINTAINING TRAFFIC	LUMP SUM																

DESIGNED BY	M. K.	APPROVED:	<i>N. W.</i>	CITY OF DETROIT CITY ENGINEERING DEPARTMENT BUREAUS OF STREETS AND HIGHWAYS FOR DPW	COBO HALL AREA STREET IMPROVEMENTS  QUANTITY SHEET	SHEET 21 OF 21 SHEETS CONTRACT NO. PW-6789 ASSIGNMENT NO. 87-60-07 DATE MAY, 1989
DRAWN BY	M. K.	ENGINEER OF STREETS				
TRACED BY		HIGHWAY ENGINEER				
CHECKED BY	N. W.					
COORD.	DESCRIPTION	DRN	CHK	APVD	DATE	
REVISIONS LOCATED BY COORDINATES ON SHEET						