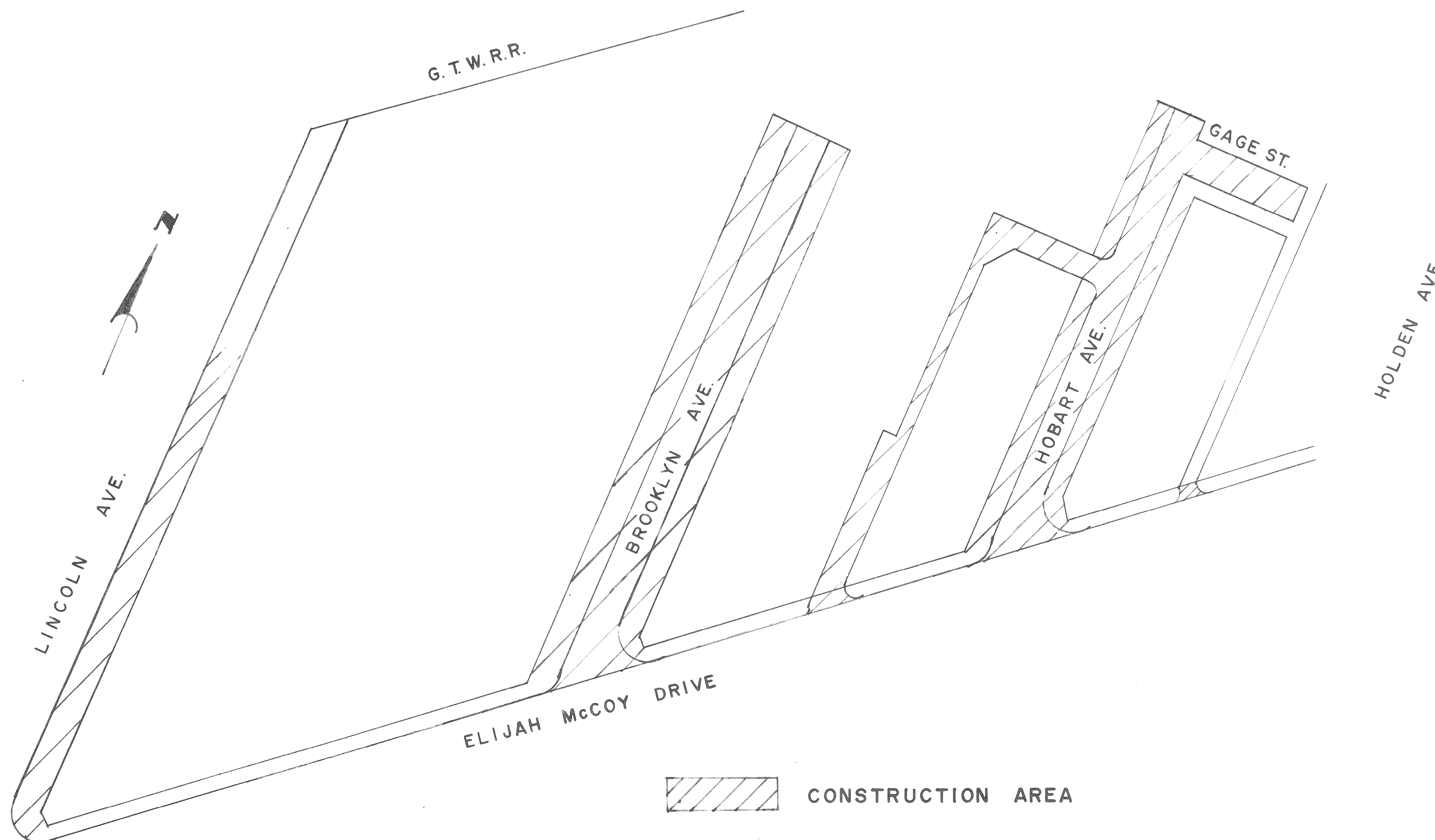


CITY OF DETROIT
 CITY ENGINEERING DIVISION - D P W

PLANS FOR PROPOSED

PAVEMENT REMOVAL AND MISCELLANEOUS CONSTRUCTION
 IN THE AREA BOUNDED BY
 W-LINCOLN E-HOLDEN S-ELIJAH McCOY DRIVE N-G.T.W.R.R.
 RESEARCH PARK WEST REHABILITATION PROJECT



INDEX OF SHEETS

1. TITLE SHEET
2. QUANTITY AND SECTION SHEET
3. PLAN

PROJECT: PAVEMENT REMOVAL AND
 MISCELLANEOUS CONSTRUCTION IN
 THE AREA BOUNDED BY W-LINCOLN
 E-HOLDEN S-ELIJAH McCOY DRIVE
 N-G.T.W.R.R. RESEARCH PARK
 WEST REHABILITATION PROJECT

CONTRACT
 NO. PW 6661

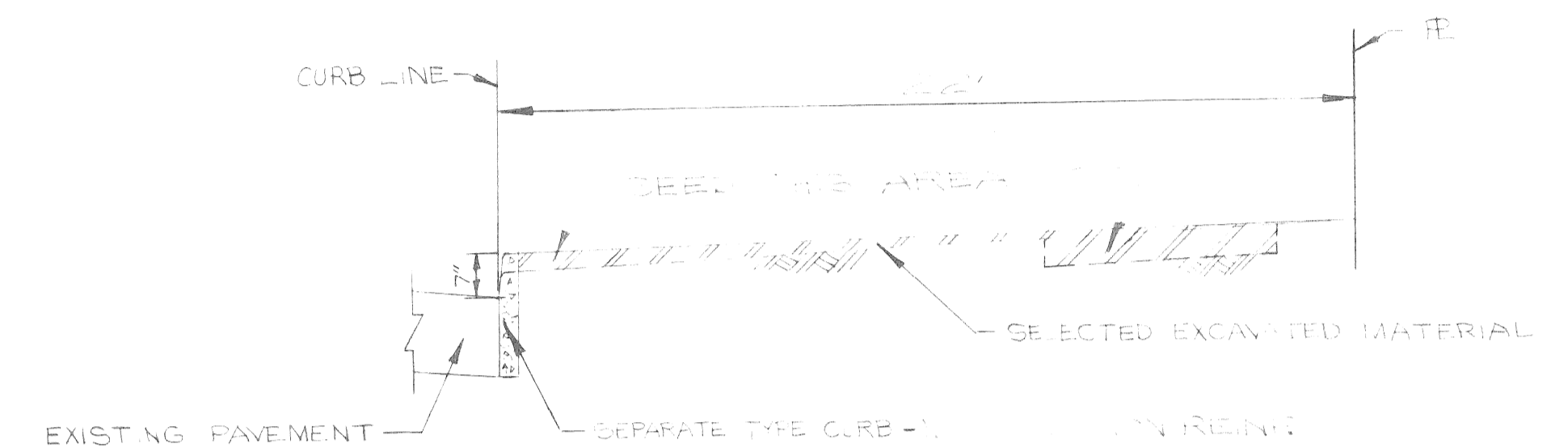
PLANS PREPARED BY
 CITY ENGINEERING DIVISION - DPW

RECOMMENDED FOR APPROVAL	ENGINEER OF INSPECTION	DATE
RECOMMENDED FOR APPROVAL	ENGINEER OF STREETS	DATE
APPROVED	<i>[Signature]</i> ASSISTANT CITY ENGINEER	<i>[Date]</i> DATE
APPROVED	CITY ENGINEER	DATE

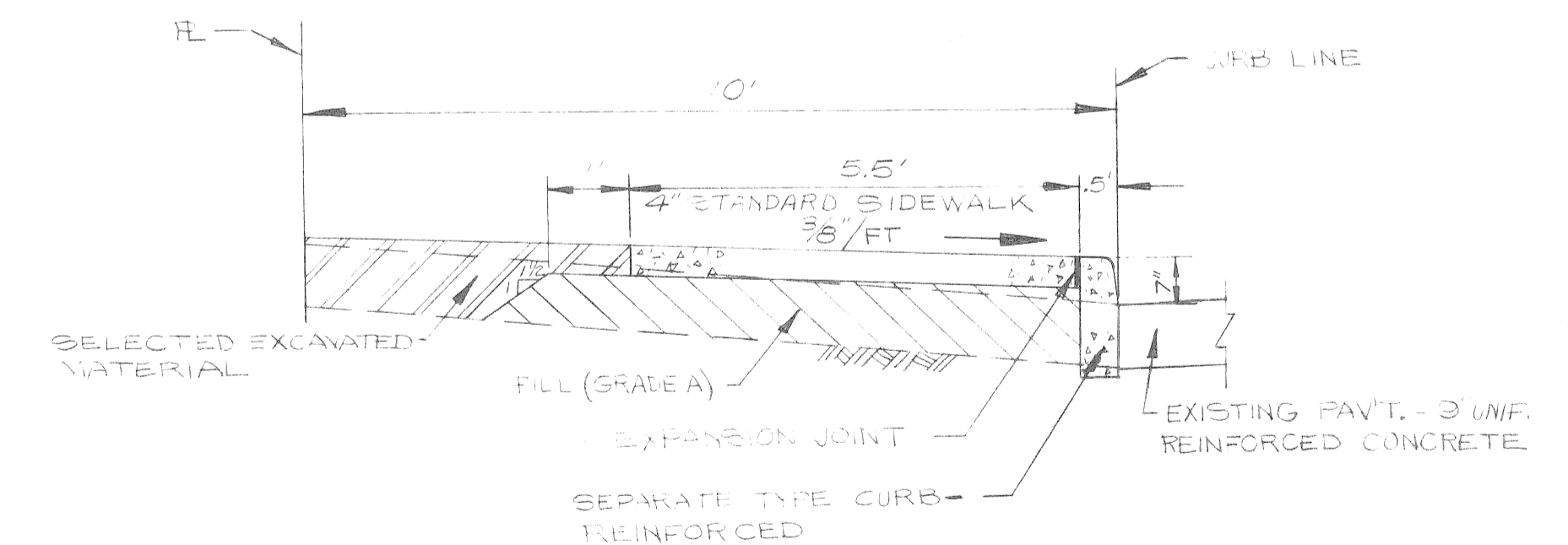
DATE 9-15-50 DRWG. NO. 1 OF 3

NO.	DESCRIPTION OF ITEM	UNITS	LINCOLN	BROOKLYN	HOBART	GAGE	ALLEYS AND OTHER AREA	TOTAL
1.	EXCAVATION	CYDS						10
2.	STREET PAV'T. REMOVAL - UNREINFORCED	SYDS		1087	762	264		2113
3.	STREET PAV'T. REMOVAL - REINFORCED	SYDS		222	188		53	463
4.	ALLEY PAV'T. REMOVAL	SYDS					534	534
5.	REINFORCED CONCRETE REMOVAL	CYDS					21	21
6.	REINFORCED CONCRETE SLAB REMOVAL	CYDS					260	260
7.	CONCRETE SLAB REMOVAL	SYDS					50	50
8.	SIDEWALK REMOVAL	SFT	2914	7804	2963		144	13825
9.	DRIVEWAY REMOVAL	SFT	1100	3536	2303			3939
10.	FENCE REMOVAL	LFT					310	310
11.	TREE REMOVAL 4"-12" DIA.	EACH			1	11	113	125
12.	TREE REMOVAL 13"-18" DIA.	EACH					1	1
13.	TREE REMOVAL 24" DIA.	EACH			1		3	4
14.	TREE REMOVAL 30" DIA.	EACH	1		1	1	1	4
15.	STUMP REMOVAL	EACH						1
16.	FILL (GRADE A)	CYDS		27	25		10	62
17.	GRADING ABANDONED ALLEYS	SYDS					534	534
18.	GRADING ABANDONED STREETS	SYDS		2787	1861	400		5048
19.	CATCH BASIN ABANDONMENT	EACH		2	2		3	7
20.	MANHOLE ABANDONMENT	EACH			1		5	6
21.	MANHOLE ADJUSTMENT	EACH	1	1			2	4
22.	MANHOLE ADJUSTMENT - CONCRETE SLAB	EACH					1	1
23.	SIDEWALK 4" STD. **	SFT		479	462		418	1359
24.	SEPARATE TYPE CURB - REINFORCED	LFT		87	84		76	247
25.	SEPARATE TYPE CURB - MODIFIED-NON REINF.	LFT	50					50
26.	SEPARATE TYPE CURB REPLACEMENT	LFT	206					206
27.	JOINT SAWING	LFT						250
28.	SHEET ASPHALT WEARING SURFACE	TONS	2					2
29.	BULKHEAD FROM MANHOLE	EACH					2	2
30.	LITTER REMOVAL	CYDS						150
31.	CLEANING STRUCTURES	EACH						1
32.	SEEDING	ACRE						8
33.	MAINTAINING TRAFFIC	LUMP SUM						
34.	WATER MAIN ABANDONMENT AND FIRE HYDRANT ABANDONMENT	LUMP SUM						

** CONSTRUCTION ONLY



SECTION B-B
NO SCALE

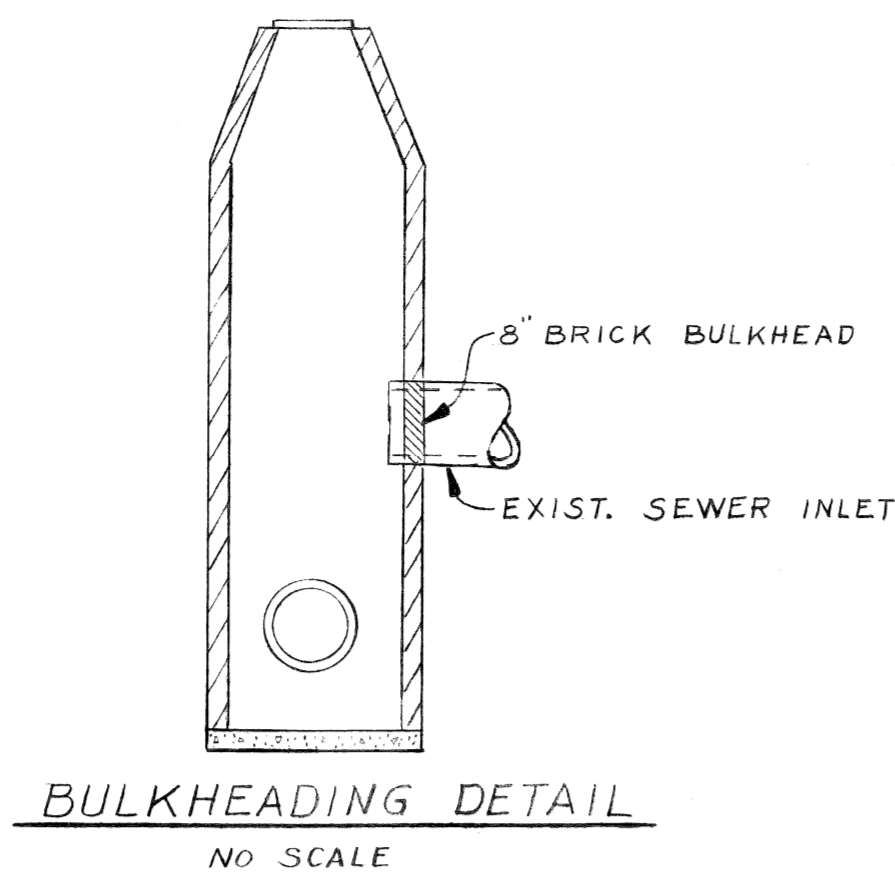


SECTION A-A
NO SCALE

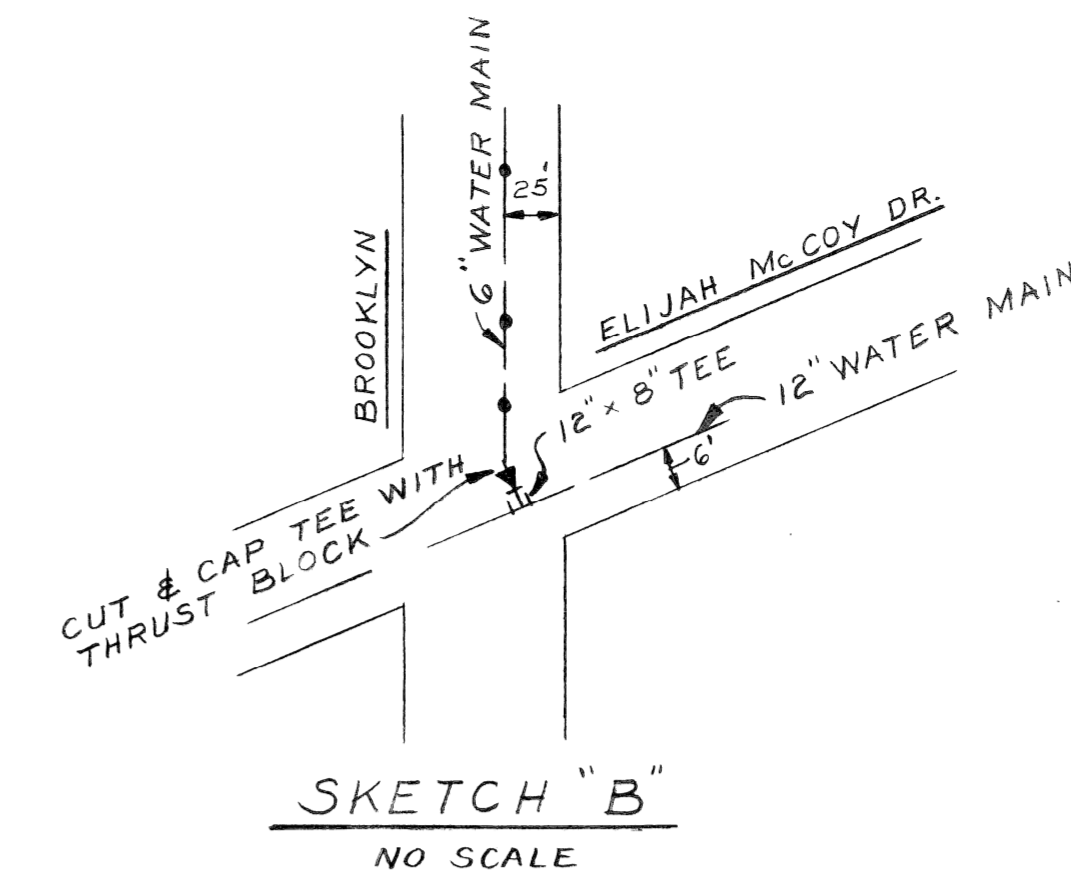
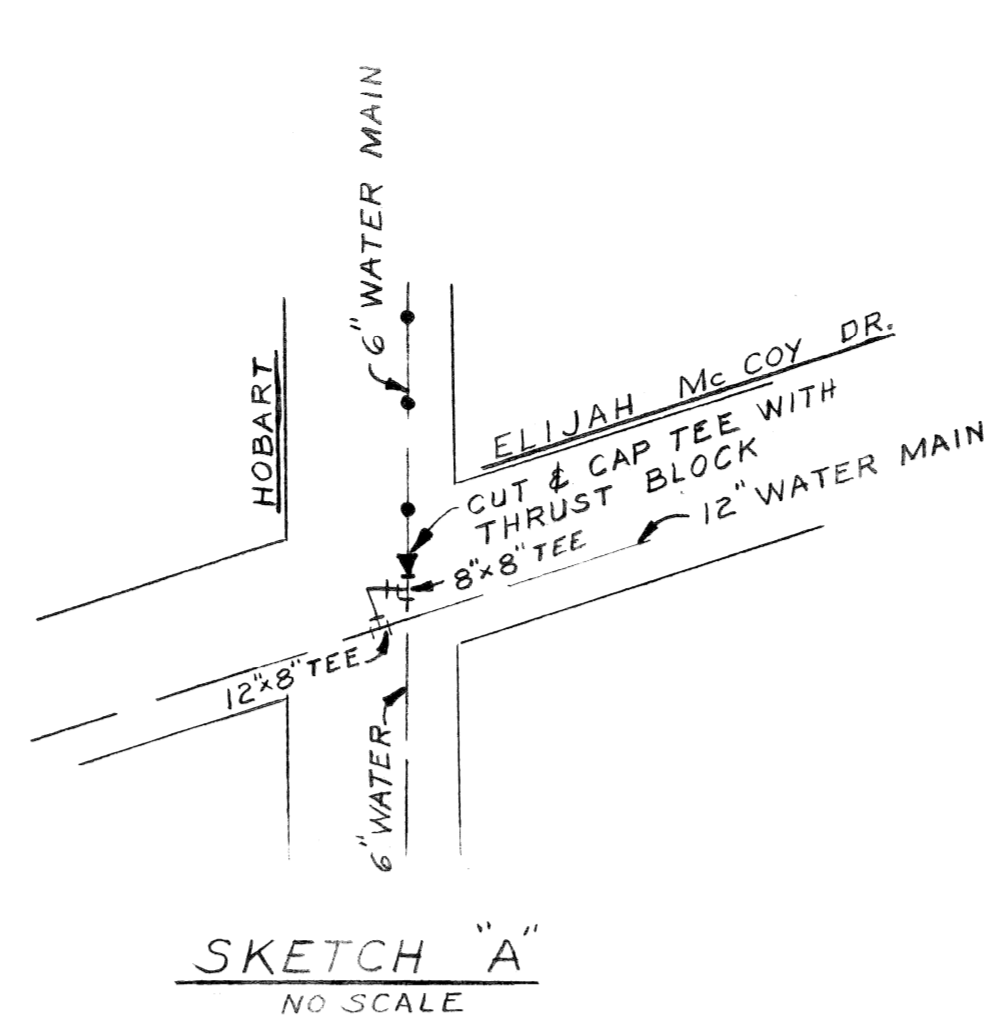
REVISIONS LOCATED BY COORDINATES ON SHEET COORD DESCRIPTION WHEN CK'D APPROV'D DATE		DESIGNED BY <i>D. E. U.</i>	APPROVED ENGINEER OF STREETS	CITY OF DETROIT CITY ENGINEERING DIVISION - D. P. W. BUREAUS OF STREETS AND HIGHWAYS FOR	PAVEMENT REMOVAL AND MISCELLANEOUS CONSTRUCTION IN THE AREA BOUNDED BY W-LINCOLN E-HOLDEN S-ELIJAH MCDY DRIVE N-G.T.W.R.R. RESEARCH PARK WEST REHABILITATION PROJECT QUANTITY AND SECTION SHEET	SHEET 2 OF 3 SHEETS CONTRACT NO. PW 6661 ASSIGNMENT NO. 82-14-10 DATE 3-15-82
CHECKED BY <i>Talley</i>		TRACED BY	TRACED BY	DATE	DATE	DATE

GENERAL NOTES:

- BEFORE STARTING CONSTRUCTION THE CONTRACTOR MUST CHECK WITH THE UTILITY COMPANIES TO VERIFY THE LOCATION OF EXISTING STRUCTURES, WHETHER OR NOT INDICATED ON THE PLANS.
- REMOVE THE EXISTING STREET AND ALLEY PAVEMENTS, CURBS, SIDEWALKS, DRIVEWAYS, TREES, AND FENCES AT LOCATIONS SHOWN ON THE PLAN OR AS DIRECTED BY THE ENGINEER.
- CONSTRUCT CURB AS SHOWN ON THE PLAN OR AS DIRECTED BY THE ENGINEER.
- CONSTRUCT STD. SIDEWALK AS SHOWN ON THE PLAN OR AS DIRECTED BY THE ENGINEER.
- FOR UTILITY LEGEND SEE STD. DETAIL DRWG C-902-A
- FOR DETAILED QUANTITIES SEE SHEET #2
- FOR TYPICAL SECTIONS SEE SHEET #2
- FOR SEPARATE TYPE CURB DETAIL SEE STD. DRWG. C-43814-C-4943
- THE CONTRACTOR SHALL BULLDOZE THE LITTER PILES INTO CONVENIENT LARGER UNITS SO THAT AN ACCURATE AND FAIR MEASUREMENT CAN BE MADE BY THE ENGINEER.
- REMOVE ABANDONED FIRE HYDRANTS AND DELIVER TO D.W.S.D.

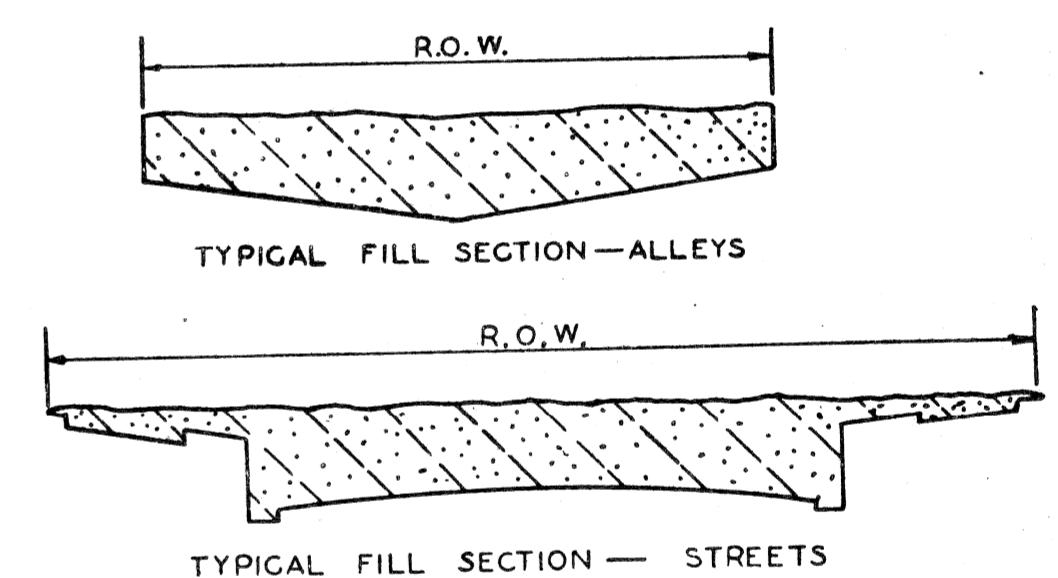


NOTE: CONTACT SURFACES TO BE CLEANED AND ROUGHENED PRIOR TO INSTALLING BRICK. BULKHEADS TO BE VERTICAL WITH ALTERNATE HEADER AND STRETCHER COURSES LAID IN MORTAR. VERTICAL JOINTS IN ADJACENT COURSES SHALL BE STAGGERED. BRICK SHALL BE LAID WITH FULL MORTAR JOINTS. ALL BEARING AREAS SHALL BE COVERED WITH MORTAR IN AN EVEN LAYER WITHOUT SPLITTING OR FURROWING AND ALL VERTICAL AND INTERIOR JOINTS SHALL BE SOLIDLY FILLED WITH MORTAR. THE COURSES SHALL BE LAID EVEN. BULKHEADS TO BE AS PLUMB AS IS POSSIBLE.

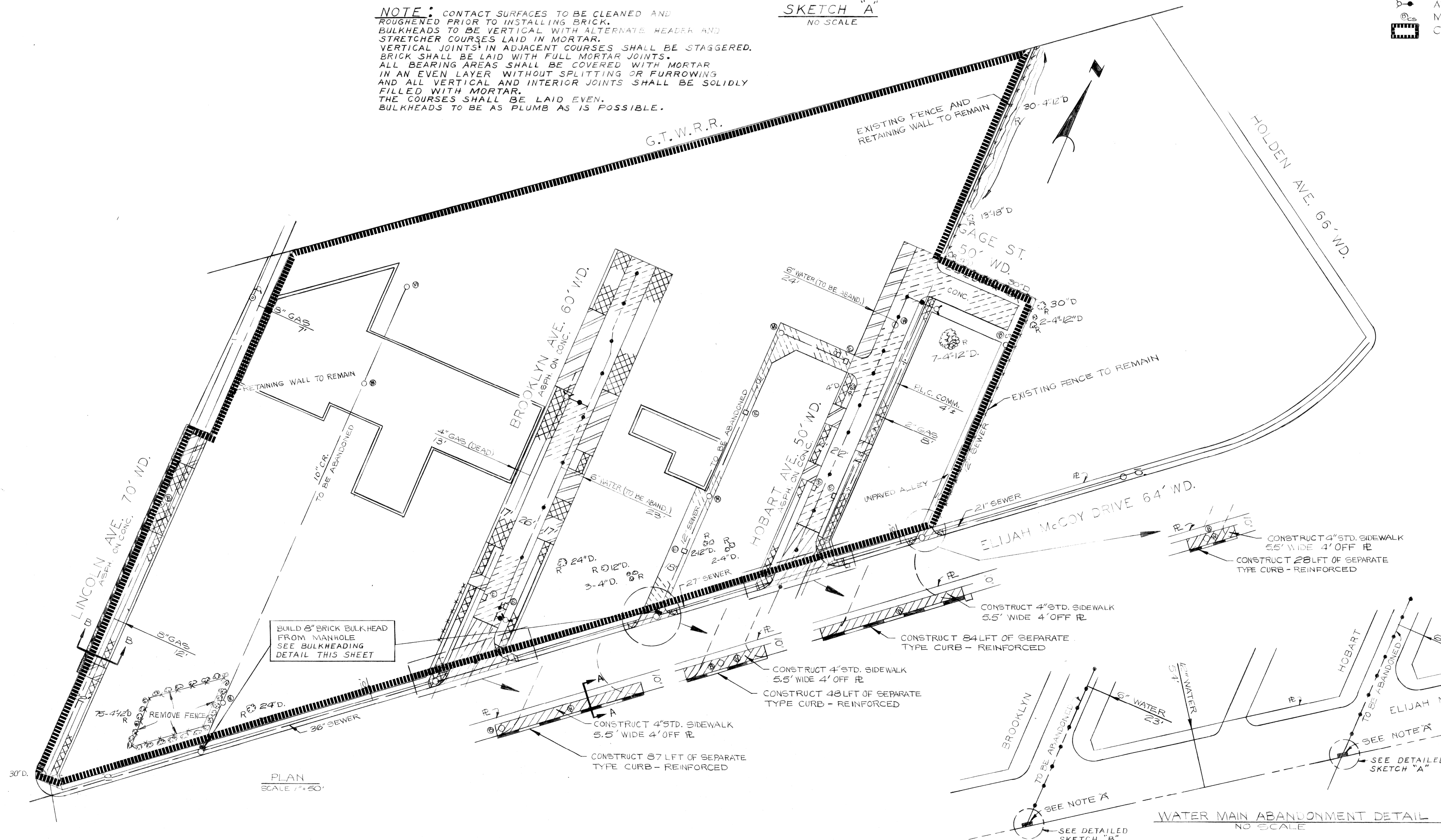


- LEGEND**
- STREET PAVT. REMOVAL- REINFORCED
 - STREET PAVT. REMOVAL- UNREINFORCED
 - ALLEY PAVT. REMOVAL
 - SIDEWALK REMOVAL
 - DRIVEWAY REMOVAL
 - CONSTRUCT STANDARD 4" SIDEWALK
 - CONSTRUCT SEPARATE TYPE CURB- REINF.
 - CONSTRUCT SEPARATE TYPE CURB- NON-REINF.
 - SEPARATE TYPE CURB REPLACEMENT- NON-REINF.
 - FENCE REMOVAL
 - BUILDINGS WITH FOUNDATIONS
 - TREE REMOVAL
 - ABANDON EXISTING CATCH BASIN
 - ABANDON EXISTING SEWER MANHOLE
 - ADJUST EXISTING MANHOLE
 - ABANDON EXISTING MANHOLE
 - ABANDON EXISTING FIRE HYDRANT
 - MANHOLE ADJUSTMENT- CONCRETE SLAB
 - CLEARING, GRUBBING & SEEDING AREA

NOTE -
APPROXIMATELY 2215 CYDS OF FILL (EARTH MATERIAL) ARE REQUIRED FOR THIS SHEET.



CALL MISSING
48 HOURS BEFORE
CONSTRUCTION STARTS



NOTE "A"
CONTRACTOR SHALL CUT AND INSTALL PLUG AND CONC. THRUST BLOCK AT TEE OR CROSS WHERE EXIST. WATER MAIN TO REMAIN IN SERVICE

CITY OF DETROIT CITY ENGINEERING DIVISION - D. P. W. BUREAU OF STREETS AND HIGHWAYS		PAVEMENT REMOVAL AND MISCELLANEOUS CONSTRUCTION IN THE AREA BOUNDED BY W-LINCOLN E-HOLDEN S-ELIJAH McCOY DRIVE N-G.T.W.R.R. RESEARCH PARK WEST REHABILITATION PROJECT		SHEET 3 OF 3 SHEETS CONTRACT NO. PW 6661 ASSIGNMENT NO. 82-14-10 DATE 9-15-82
DESIGNED BY D. Ep. W. DRAWN BY D. Ep. W. TRACED BY TA/VE CHECKED BY TA/VE	APPROVED [Signature] ENGINEER OF STREETS	FOR		PLAN