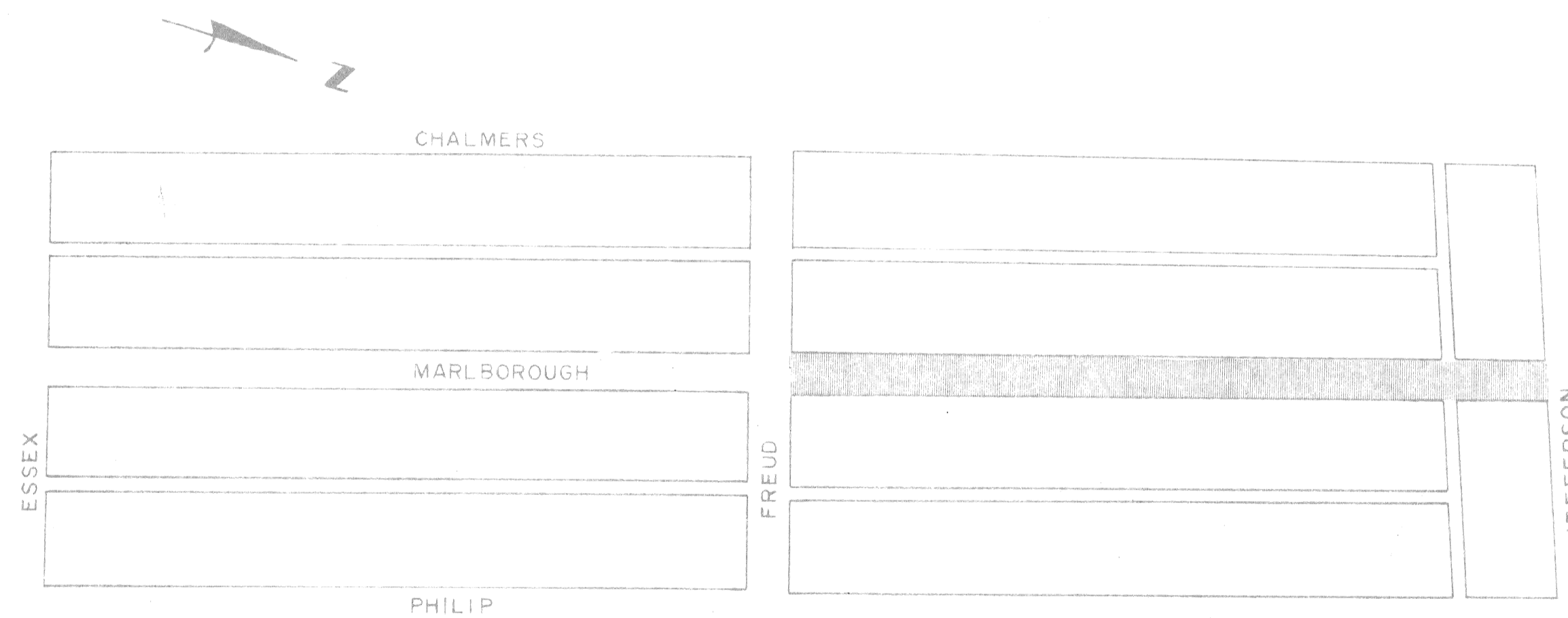


CITY OF DETROIT  
 CITY ENGINEERING DIVISION - DPW

PLANS FOR PROPOSED

REPAVING OF MARLBOROUGH FREUD TO JEFFERSON  
 JEFFERSON-CHALMERS REHABILITATION PROJECT  
 FOR  
 COMMUNITY AND ECONOMIC DEVELOPMENT DEPARTMENT



 CONSTRUCTION AREA

INDEX OF SHEETS

1. TITLE SHEET
2. TYPICAL SECTIONS AND QUANTITIES
- 3-4. PLAN AND PROFILES

FILE NO. 7564

PROJECT: REPAVING OF MARLBOROUGH FREUD TO JEFFERSON JEFFERSON-CHALMERS REHABILITATION PROJECT	CONTRACT NO. PW 6633
---	----------------------------

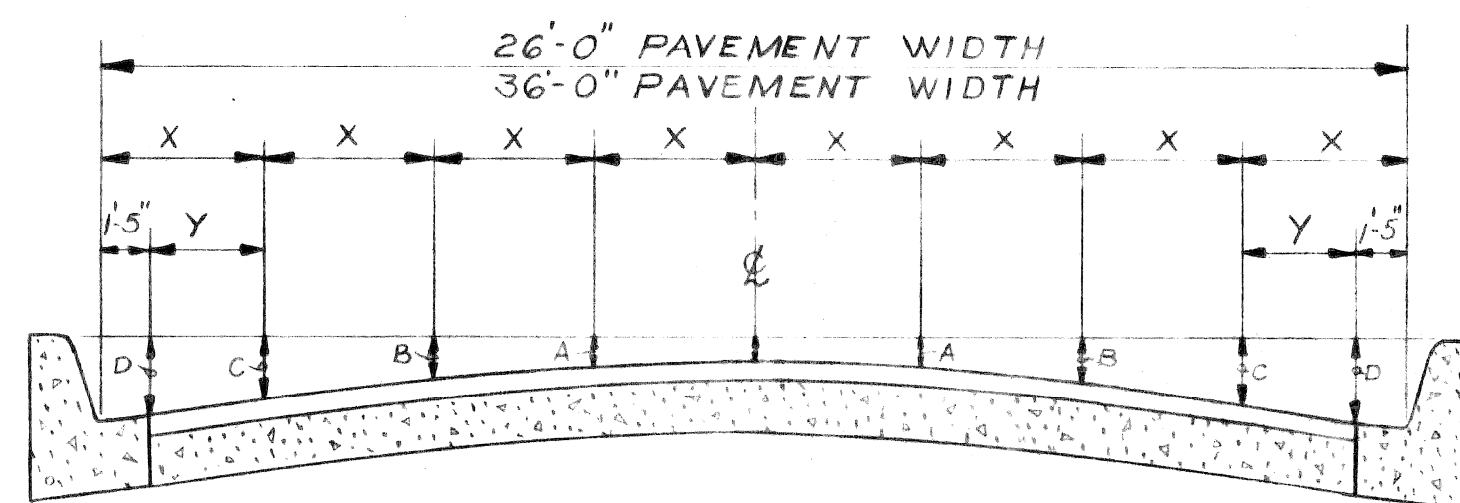
PLANS PREPARED BY  
 CITY ENGINEERING DIVISION - DPW

RECOMMENDED FOR APPROVAL	ENGINEER OF INSPECTION	DATE
RECOMMENDED FOR APPROVAL	ENGINEER OF STREETS	DATE
APPROVED	ASSISTANT CITY ENGINEER	DATE
APPROVED	CITY ENGINEER	DATE

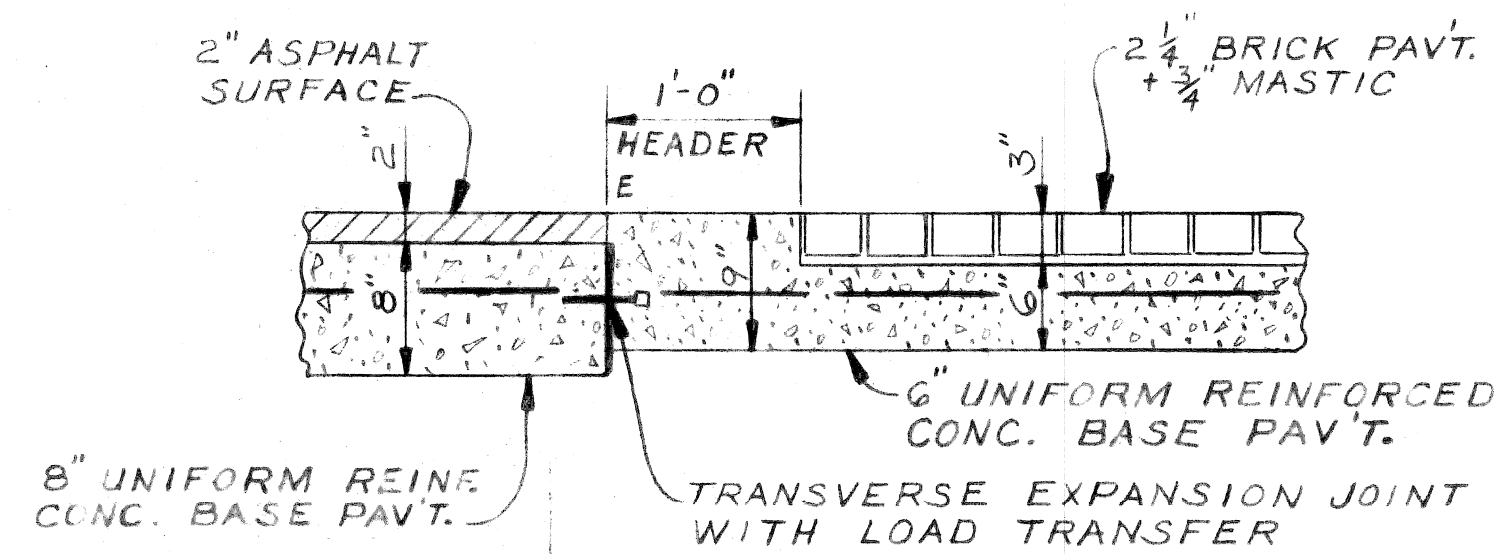
DATE JANUARY 22, 1981 DRWG. NO. 1 OF 4

ITEM NO.	DESCRIPTION OF ITEM	UNIT	TOTAL
1	EXCAVATION	CYDS	136
2	STREET PAVEMENT REMOVAL UNREINFORCED	SYDS	3,867
3	DRIVEWAY REMOVAL	SFT	2,300
4	SIDEWALK REMOVAL	SFT	7,429
5	FILL (GRADE A)	CYDS	145
6	MANHOLE ADJUSTMENT	EACH	2
7	MANHOLE-RECONSTRUCT CONE	EACH	1
8	CATCH BASIN ABANDONMENT	EACH	6
9	MANHOLES - SPECIAL TYPE	EACH	3
10	CATCH BASIN 18"x12" SPECIAL "Y" MODIFIED	EACH	6
11	SEWER 12" PIPE C-76-III	LFT	72
12	BRICK PAVING	SYDS	3,213
13	CONC. BASE PAV'T. 6" UNIF. REINFORCED *** HIGH EARLY STRENGTH	SYDS	3,213
14	CONC. BASE PAV'T. 8" UNIF. REINFORCED * HIGH EARLY STRENGTH	SYDS	110
15	INTEGRAL CURB & GUTTER 2 FT. WIDE REINF. CONC. HIGH EARLY STRENGTH	LFT	2,276
16	TEST CORES	EACH	5
17	SIDEWALKS 4" CONCRETE ** HIGH EARLY STRENGTH	SFT	6,739
18	SIDEWALKS 6" CONCRETE ** HIGH EARLY STRENGTH	SFT	936
19	DRIVEWAY 6" CONCRETE ** HIGH EARLY STRENGTH	SFT	2,300
20	STRIPPING	SYDS	175
21	BITUMINOUS BOND COAT	GALS	29
22	MAINTAINING TRAFFIC	LUMP SUM	LUMP SUM
23	RESURFACING MIXTURES IN PLACE (ALL SLAG AGGREGATES)		
	a) FINE BINDER COURSE MIXTURE	TONS	22
	b) WEARING SURFACE MIXTURE 31A(CD)	TONS	15

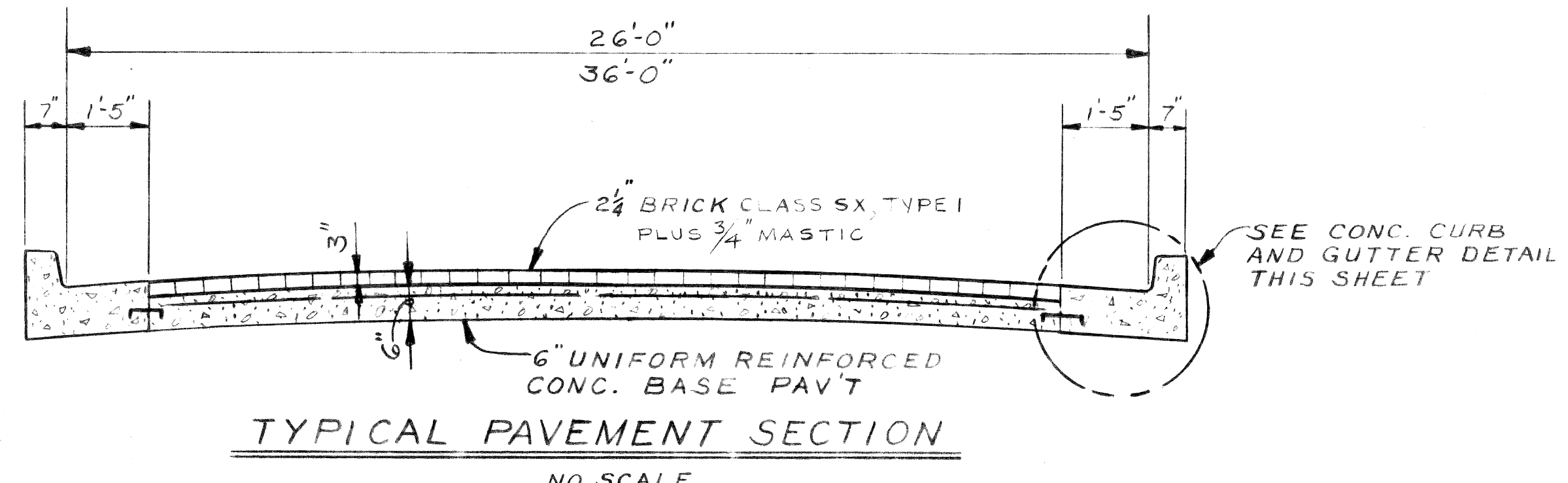
\* INCLUDES TYPE III CURBS SEE STD. DRAWINGS C-4380 OR C-4381  
 \*\* CONSTRUCTION ONLY  
 \*\*\* NO CURB



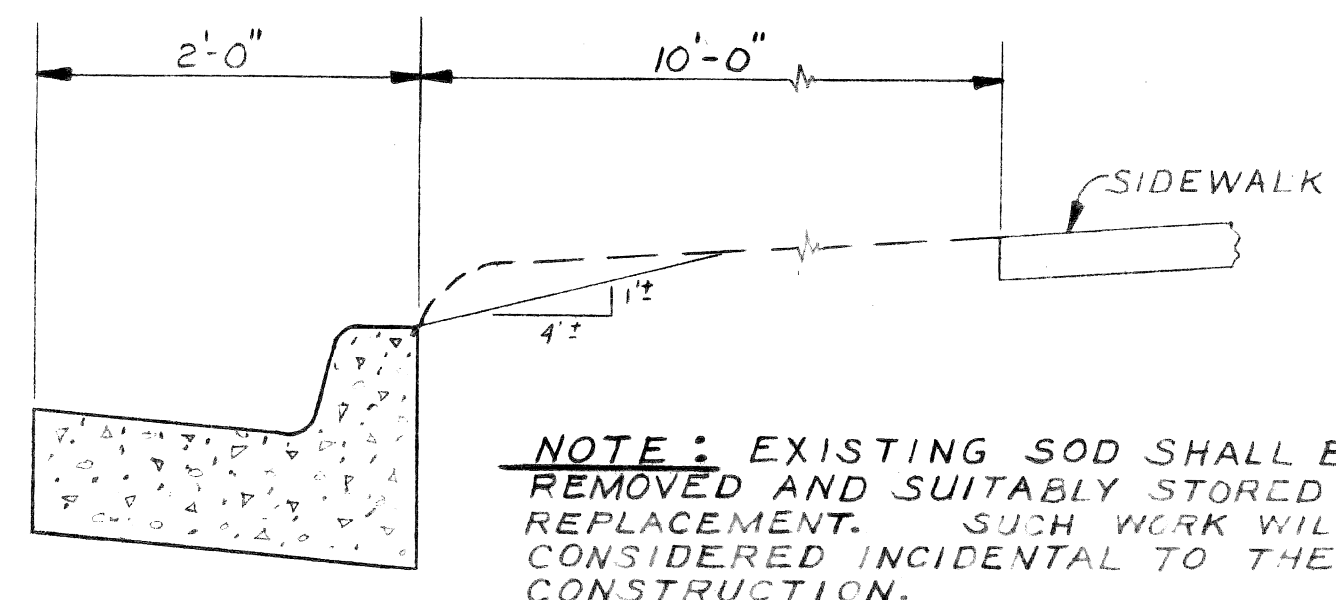
ELEMENTS OF PAVEMENT									
WIDTH	Y	X	CURB	D	C	B	A	G	
26'-0"	1'-10"	3'-3"	7"	6 3/8"	5 5/8"	4 1/2"	4"	3 1/4"	
36'-0"	3'-1"	4'-6"	7"	6 1/4"	5"	3 5/8"	2 3/4"	2 1/2"	



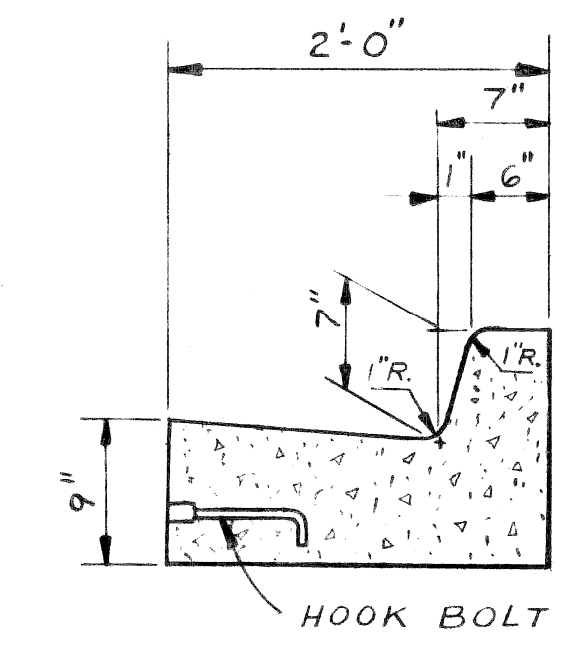
SECTION A-A  
SCALE: 1" = 1'-0"



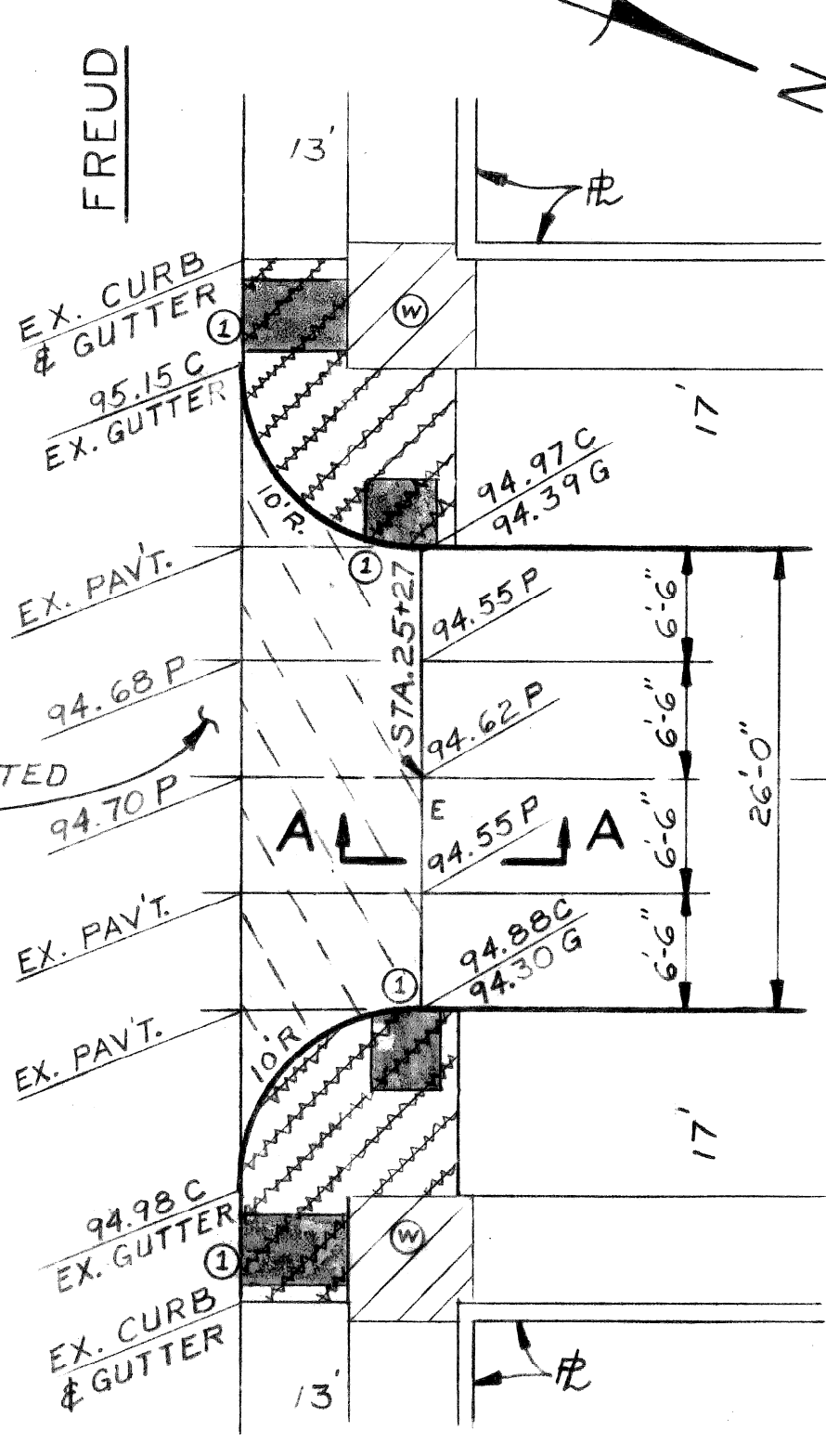
TYPICAL PAVEMENT SECTION  
NO SCALE



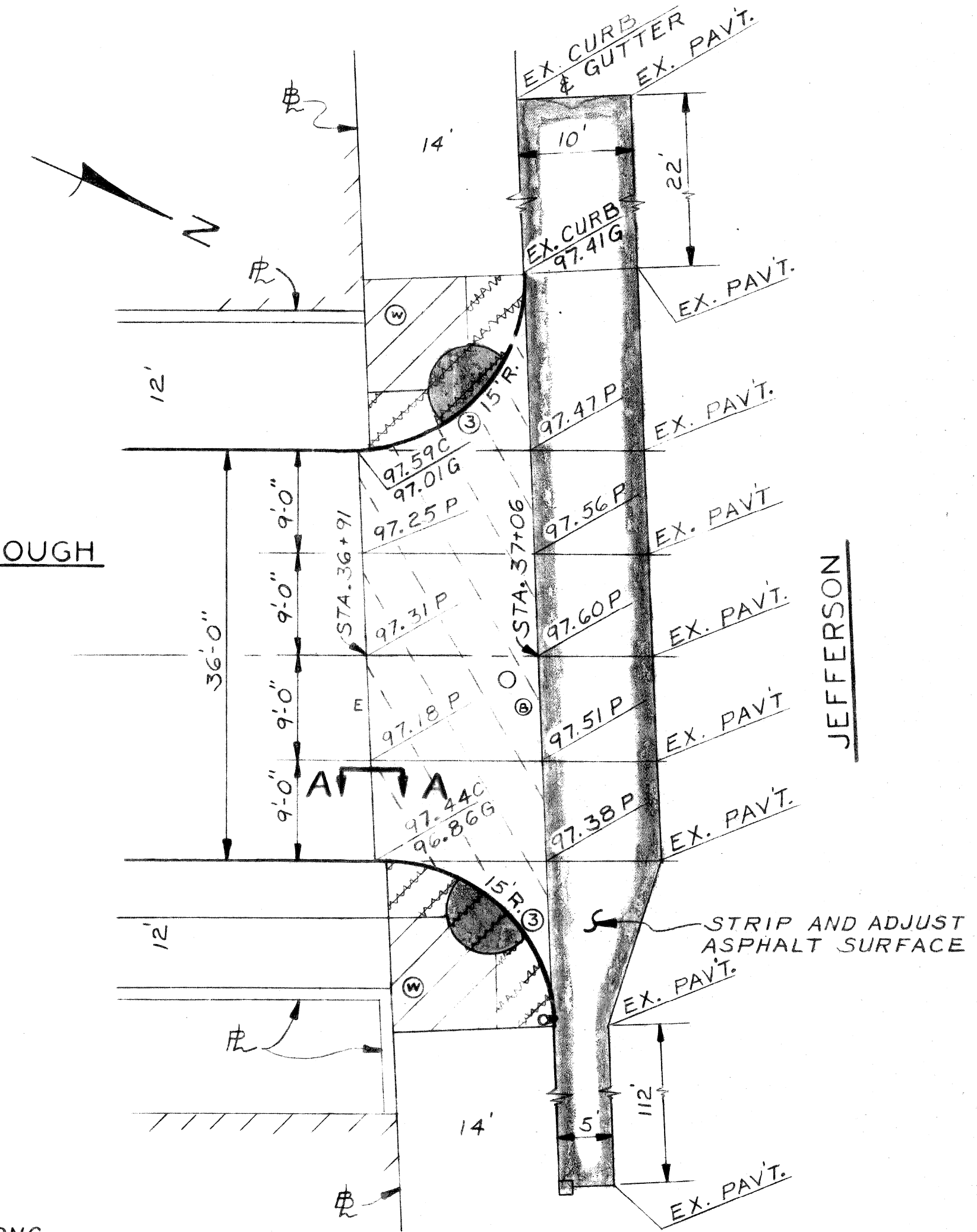
TYPICAL BERM SECTION  
NO SCALE



CONCRETE CURB AND GUTTER DETAIL  
NO SCALE



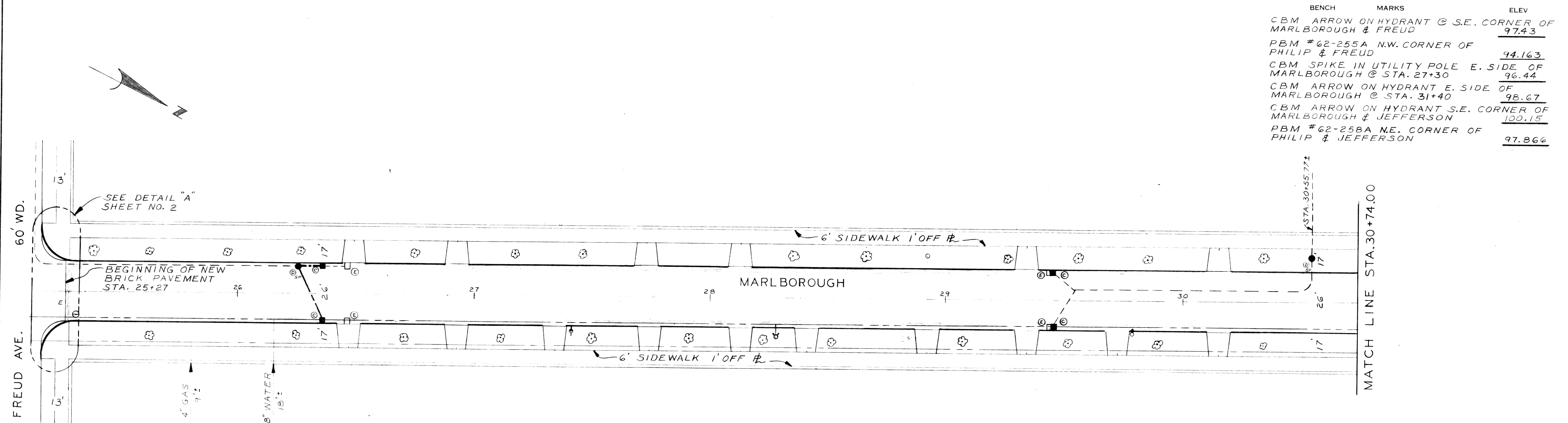
DETAIL "A"  
NO SCALE



DETAIL "B"  
NO SCALE

- LEGEND**
- 8" UNIFORM REINF. CONC. PLUS 2" ASPHALT
  - 4" STANDARD SIDEWALK
  - 6" SIDEWALK
  - SIDEWALK RAMP TYPE 1
  - SIDEWALK RAMP TYPE 3

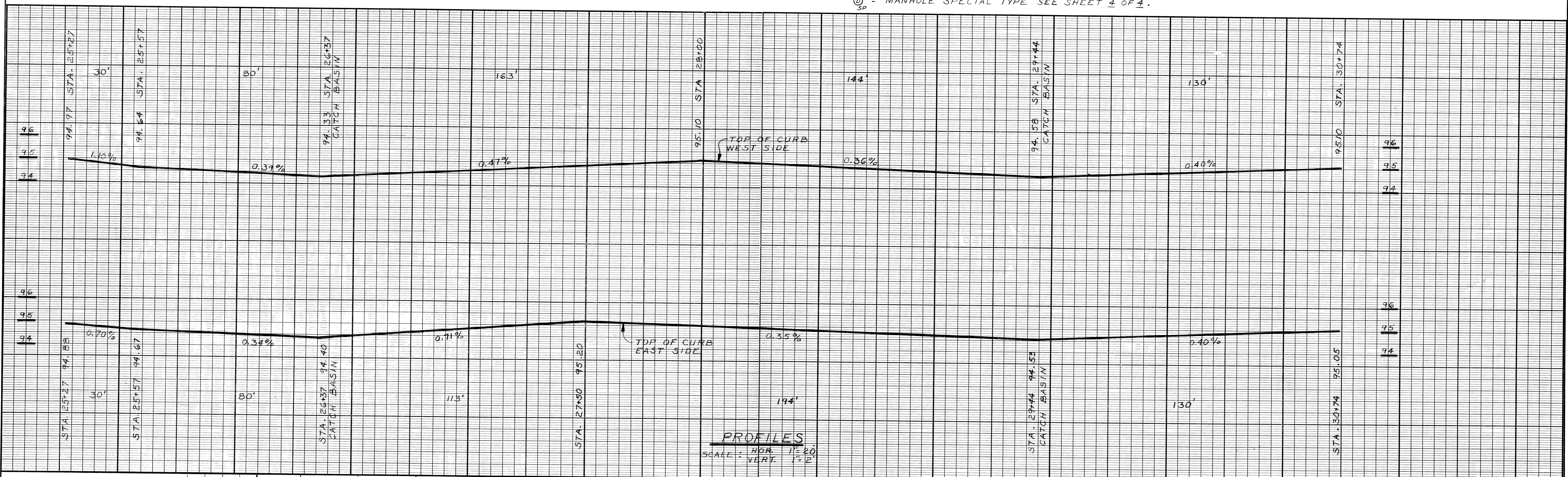
REVISIONS LOCATED BY COORDINATES ON SHEET COORD. DESCRIPTION DRN CKD APVD DATE		REFERENCE DRAWINGS DESIGNED BY G BRANTIGAN DRAWN BY R Rosik TRACED BY CHECKED BY GEB	APPROVED:  ENGINEER OF STREETS HIGHWAY ENGINEER	CITY OF DETROIT CITY ENGINEERING DIVISION - DPW BUREAUS OF STREETS AND HIGHWAYS FOR COMMUNITY AND ECONOMIC DEVELOPMENT DEPARTMENT	REPAVING OF MARLBOROUGH FREUD TO JEFFERSON JEFFERSON CHALMERS REHABILITATION PROJECT TYPICAL SECTIONS AND QUANTITIES	SHEET 2 OF 4 SHEETS CONTRACT NO. PW 6633 ASSIGNMENT NO. 80-14-18 DATE 1-22-81
---	--	--	--	---	--	--



BENCH MARKS	ELEV
CBM ARROW ON HYDRANT @ S.E. CORNER OF MARLBOROUGH & FREUD	97.43
PBM #62-255A N.W. CORNER OF PHILIP & FREUD	94.163
CBM SPIKE IN UTILITY POLE E. SIDE OF MARLBOROUGH @ STA. 27+30	96.44
CBM ARROW ON HYDRANT E. SIDE OF MARLBOROUGH @ STA. 31+40	98.67
CBM ARROW ON HYDRANT S.E. CORNER OF MARLBOROUGH & JEFFERSON	100.15
PBM #62-258A N.E. CORNER OF PHILIP & JEFFERSON	97.866

PLAN  
SCALE: 1"=20'

NOTE: REPLACE EXISTING DRAINAGE STRUCTURES WITH MODIFIED 18"x12" SPECIAL "Y" CATCH BASINS MEETING EXISTING INVERTS. REPLACE EXISTING BROKEN PIPE AS NECESSARY.  
 (C) = MANHOLE SPECIAL TYPE SEE SHEET 4 OF 4.



PROFILES  
SCALE: HOR. 1"=20' VERT. 1"=2'

PLAN	R Rosik	CHECKED BY	GEB	APPROVED	W. James Lawless
GRADE	G BRANTIGAN				ENGINEER OF STREETS
ESTIMATE	GEB				HIGHWAY ENGINEER
DESCRIPTION	DATE	BY	DATE	BY	DATE
REVISIONS					

CITY OF DETROIT  
 CITY ENGINEERING DIVISION DPW  
 BUREAU OF STREETS AND HIGHWAYS  
 FOR  
 COMMUNITY AND ECONOMIC DEVELOPMENT DEPARTMENT

REPAVING OF MARLBOROUGH FREUD TO JEFFERSON  
 JEFFERSON CHALMERS REHABILITATION PROJECT  
 PLAN AND PROFILES

INDEX NO.	31	SHEET	3 OF 4 SHEETS
CONTRACT NO.	62	PW	6633
ASSIGNMENT NO.			80-14-18
DATE			1-22-81

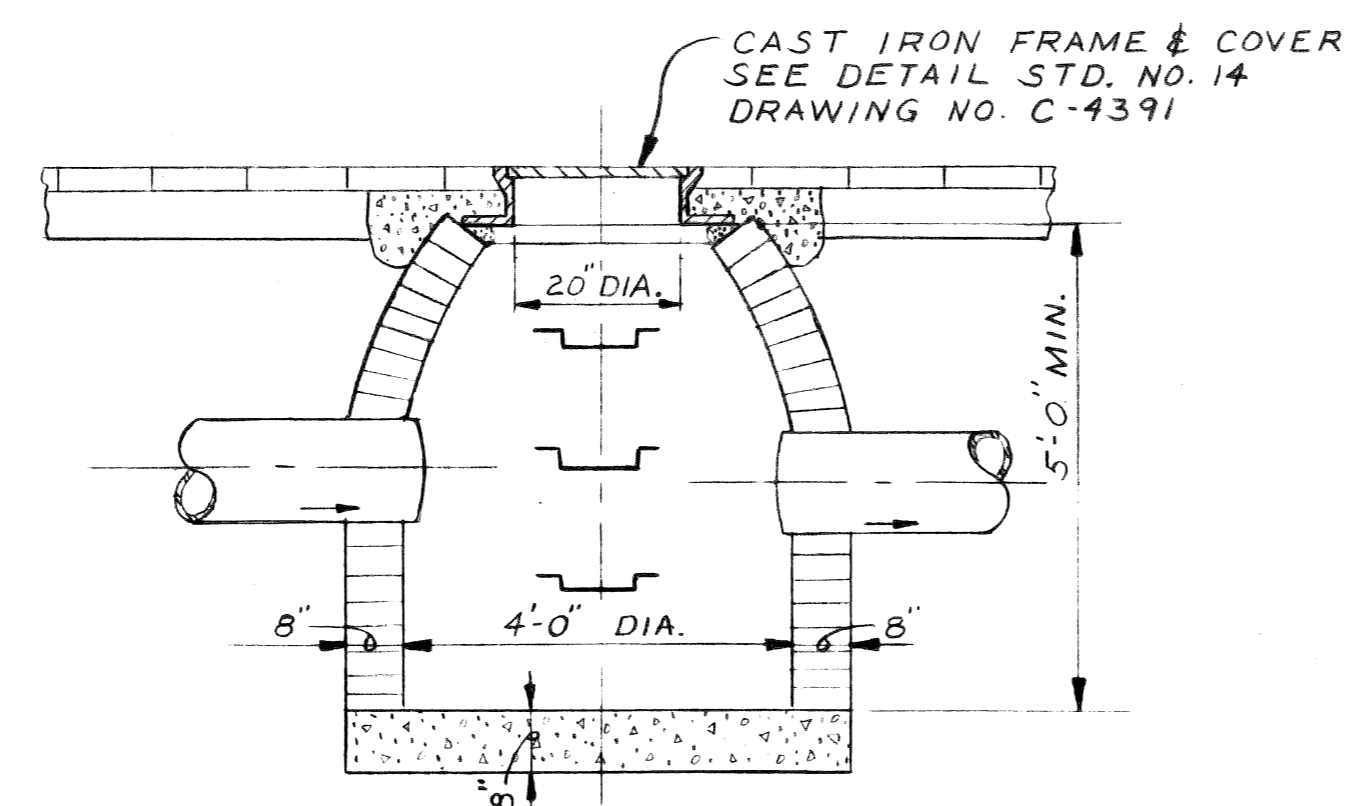
SCALE	HORIZONTAL: 1" = 20'	VERTICAL: 1" = 2'
BOOK	LL 62A7	NO. 18
LEVEL	DATE	8-80
PAVING COMPLETED		

BEFORE STARTING CONSTRUCTION, CONTRACTOR MUST CHECK WITH UTILITIES FOR LOCATIONS OF EXISTING STRUCTURES WHETHER OR NOT INDICATED ON PLANS.

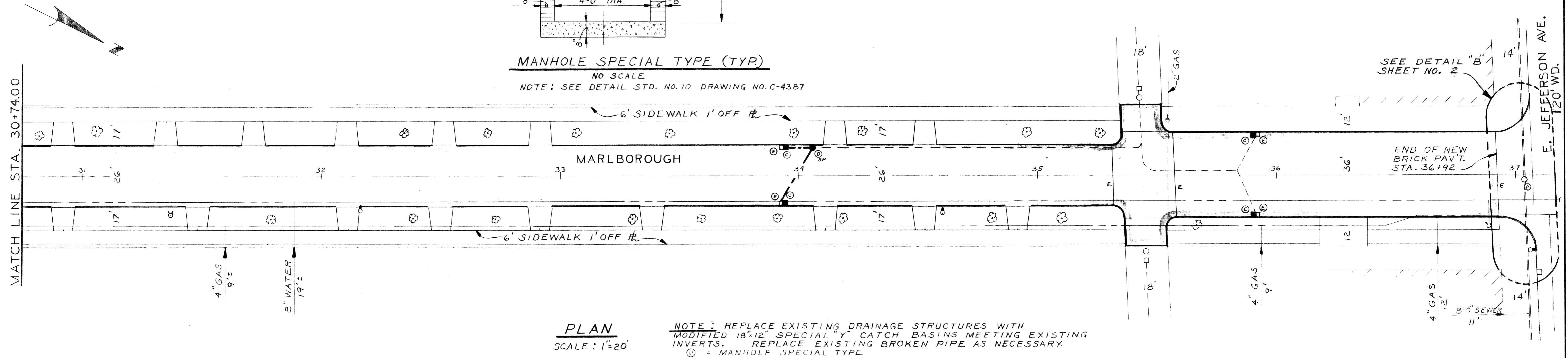
NOTE - FOR SYMBOLS (C) ETC. SEE STANDARD DETAIL DRAWING NO. C-417

BENCH MARKS SEE SHEET 3 OF 4

ELEV

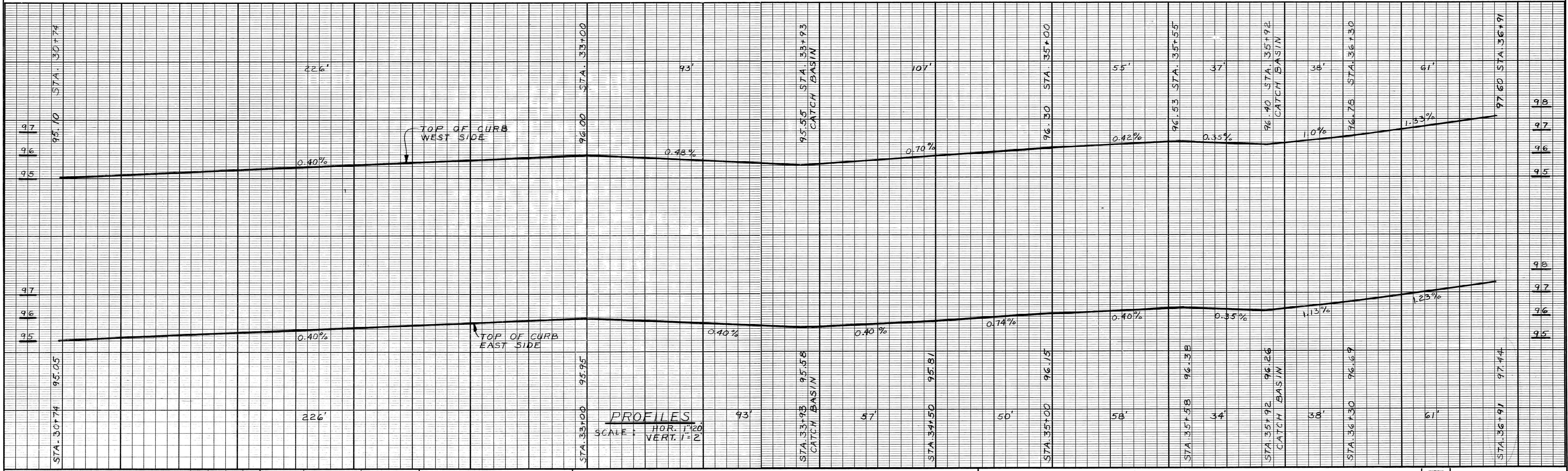


MANHOLE SPECIAL TYPE (TYP)  
NO SCALE  
NOTE: SEE DETAIL STD. NO. 10 DRAWING NO. C-4387



PLAN  
SCALE: 1" = 20'

NOTE: REPLACE EXISTING DRAINAGE STRUCTURES WITH MODIFIED 18"x12" SPECIAL "Y" CATCH BASINS MEETING EXISTING INVERTS. REPLACE EXISTING BROKEN PIPE AS NECESSARY.  
⊙ = MANHOLE SPECIAL TYPE  
⊙<sub>sp</sub>



DESCRIPTION	DATE	APPROVED
REVISIONS		

BY	R Rosik	CHECKED BY	GEB	APPROVED	[Signature]
GRADE	G. DRAYTON			ENGINEER OF STREETS	
ESTIMATE	GEB			HIGHWAY ENGINEER	
FINAL	GEB				

CITY OF DETROIT  
CITY ENGINEERING DIVISION DPW  
BUREAU OF STREETS AND HIGHWAYS  
FOR  
COMMUNITY AND ECONOMIC DEVELOPMENT DEPARTMENT

REPAVING OF MARLBOROUGH FREUD TO JEFFERSON  
JEFFERSON CHALMERS REHABILITATION PROJECT  
PLAN AND PROFILES

INDEX NO.	31	SHEET	4 OF 4 SHEETS
CONTRACT NO.	62	ASSIGNMENT NO.	80-14-18
DATE	1-22-81		