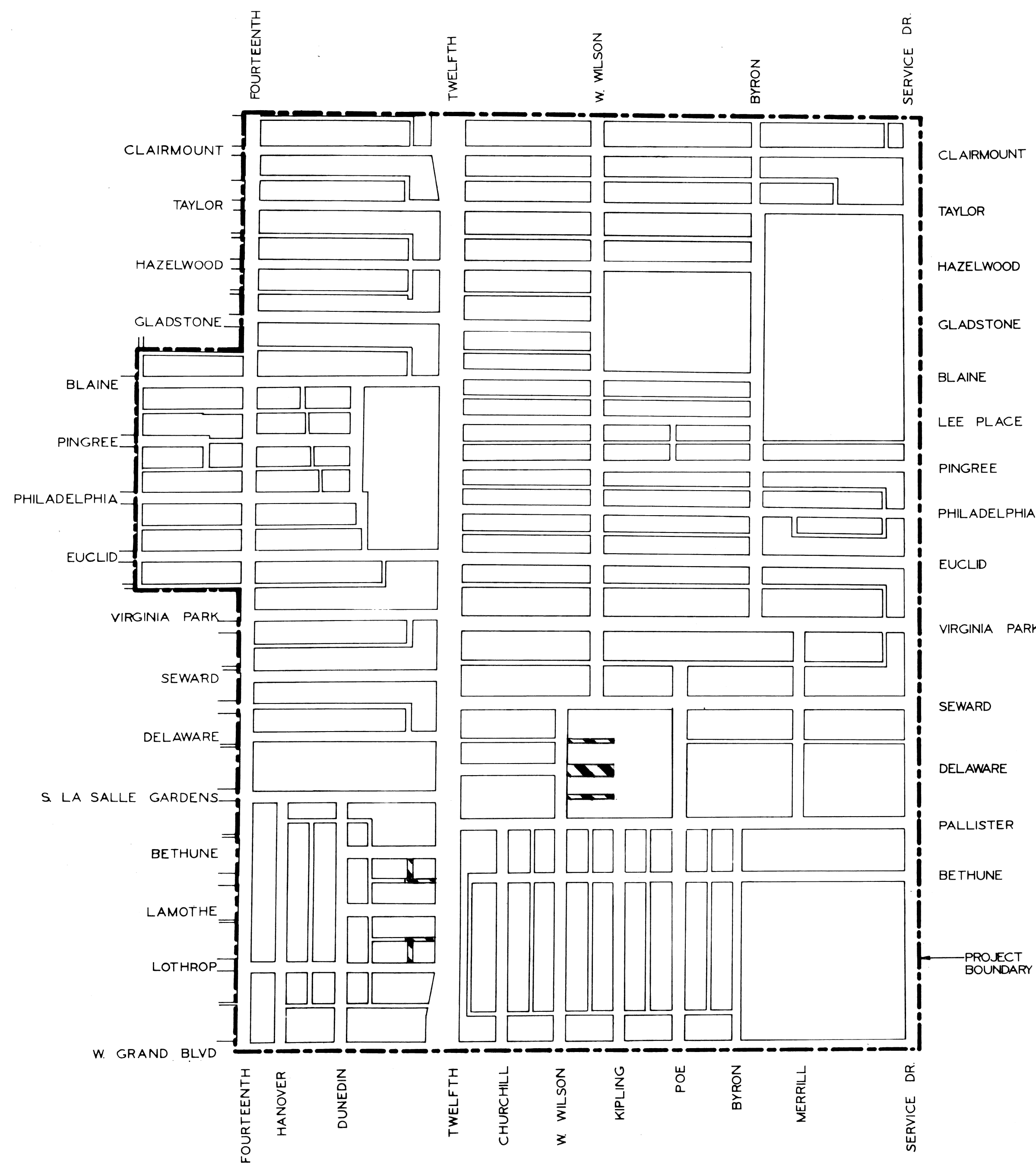


CITY OF DETROIT  
DEPARTMENT OF PUBLIC WORKS  
CITY ENGINEERS OFFICE

PLANS FOR PROPOSED  
ALLEY PAVING, PAVEMENT REMOVAL  
AND MISCELLANEOUS CONSTRUCTION  
IN THE AREA BOUNDED BY  
DUNEDIN - POE - LOTHROP - SEWARD  
VIRGINIA PARK N.D.P. MICH. A-4-2  
FOR  
COMMUNITY AND ECONOMIC DEVELOPMENT DEPARTMENT



 CONSTRUCTION AREA

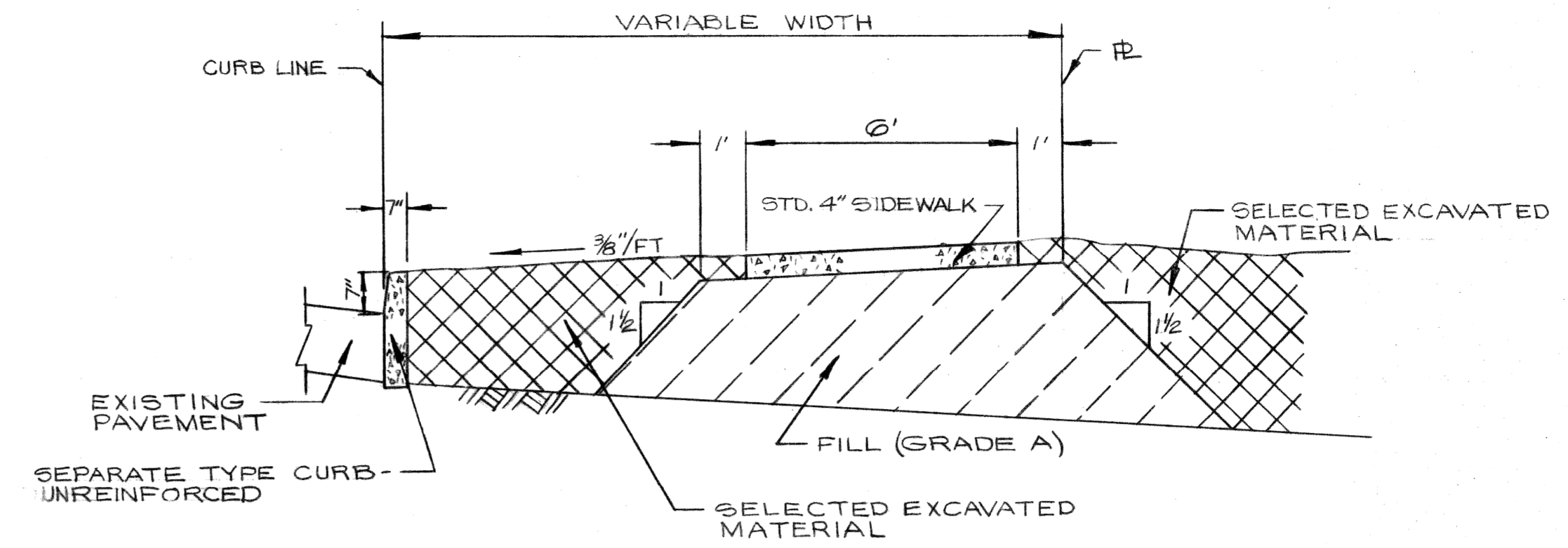
INDEX OF SHEETS

1. TITLE SHEET
2. QUANTITY AND SECTION SHEET
3. PAVING PLAN
4. REMOVAL AND UTILITY SHEET
- 5-6. SEWER ALTERATIONS

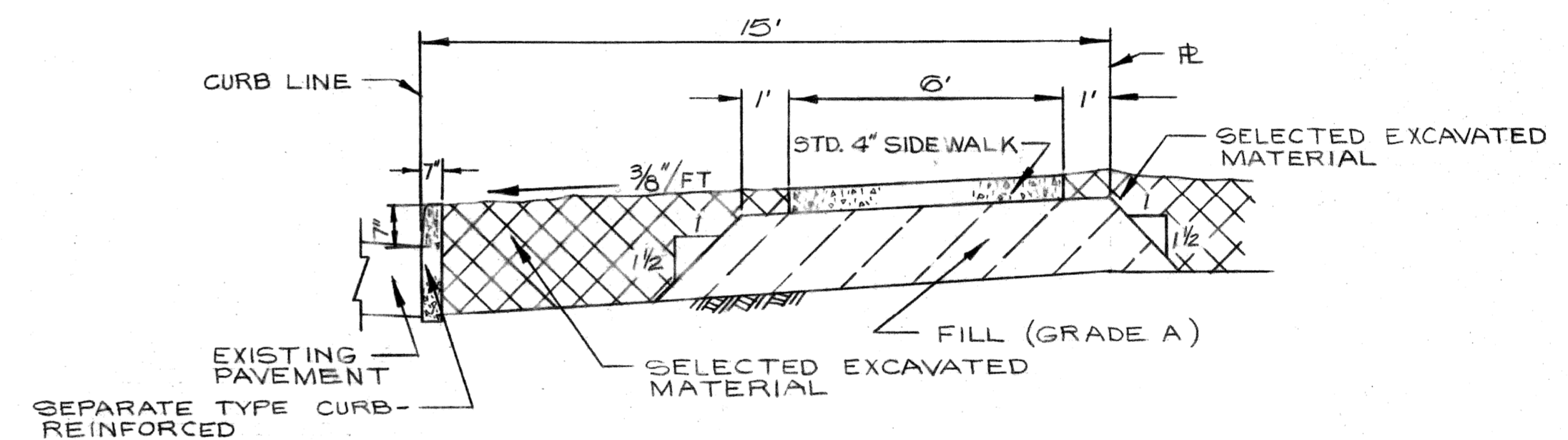
<b>PROJECT</b> ALLEY PAVING, PAVEMENT REMOVAL AND MISCELLANEOUS CONSTRUCTION IN THE AREA BOUNDED BY DUNEDIN-POE-LOTHROP-SEWARD	<b>CONTRACT NO.</b> <p align="center" style="font-size: 1.2em;">PW 6619</p>
<b>PLANS PREPARED BY</b> DEPARTMENT OF PUBLIC WORKS CITY ENGINEERS OFFICE	
RECOMMENDED FOR APPROVAL ENGINEER OF INSPECTION	_____ DATE
RECOMMENDED FOR APPROVAL ENGINEER OF STREETS	<i>Naim O'Kawwa</i> DATE 7/29/80
APPROVED ASSISTANT CITY ENGINEER	_____ DATE 7/29/80
APPROVED CITY ENGINEER	_____ DATE 7/29/80
DATE JULY 28, 1980	DRWG. NO. 1 OF 6

QUANTITIES					
NO.	DESCRIPTION	UNIT	SHEET #3	SHEET #4	TOTAL
1.	EXCAVATION	CYDS	667		667
2.	STREET PAV'T. REM'L. - UNREINFORCED	SYDS	80	1022	1102
3.	ALLEY PAV'T. REM'L.	SYDS	674	1217	1891
4.	SIDEWALK REMOVAL	SFT	785	2328	3113
5.	DRIVEWAY REMOVAL	SFT			100
6.	INT. CURB AND SIDEWALK REMOVAL	LFT	90		90
7.	NON-REINF. CONC. REMOVAL	CYDS	7		7
8.	TREE REMOVAL 4"-12" DIA.	EA	1		1
9.	STUMP REMOVAL	EA	3		3
10.	FILL (GRADE A)	CYDS	410	22	432
11.	GRADING ABANDONED ALLEYS	SYDS	516	1217	1733
12.	GRADING ABANDONED STREETS	SYDS		2000	2000
13.	MANHOLE ADJUSTMENT - CONCRETE SLAB	EA	1		1
14.	MANHOLE ABANDONMENT	EA	1	1	2
15.	MANHOLE RECONSTRUCT CONE	EA			1
16.	CATCH BASIN ABANDONMENT	EA		7	7
17.	CATCH BASIN SPECIAL ABANDONMENT	EA	1		1
18.	CATCH BASIN 18"X12" SPECIAL 'Y'	EA	2		2
19.	SEWER - 12" PIPE C-76-III	LFT	129		129
20.	PAVEMENT - 6" UNIFORM CONCRETE	SYDS	954		954
21.	LONGITUDINAL DUMMY GROVE CONTRACTION JOINT	LFT	250		250
22.	SEPARATE TYPE CURB - REINFORCED	LFT	80		80
23.	SEPARATE TYPE CURB - NON-REINFORCED	LFT		98	98
24.	TEST CORES	EA	2		2
25.	SIDEWALK - 4" STANDARD *	SFT	576	780	1356
26.	SIDEWALK - 6" STANDARD *	SFT	240		240
27.	BULKHEAD FROM MANHOLE	EA		2	2
28.	BULKHEAD AND EXCAVATION	EA		5	5
29.	LITTER REMOVAL	CYDS			50
30.	CLEANING STRUCTURES	EA			1
31.	MAINTAINING TRAFFIC	LUMP SUM			
SEWER ALTERATIONS - FOR SEWER ITEMS SEE SHEET 6 OF 6					

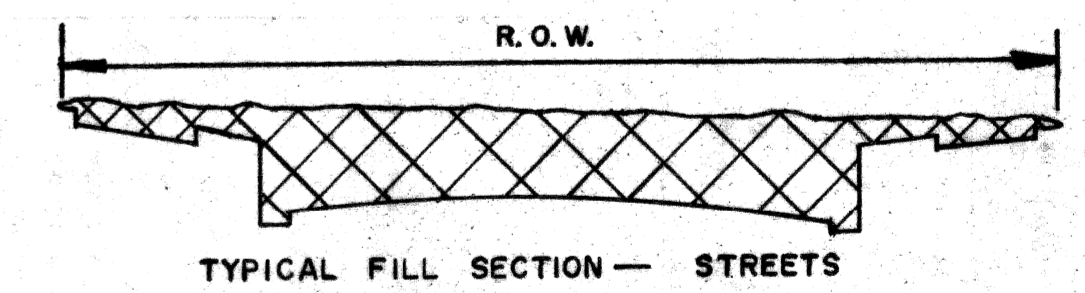
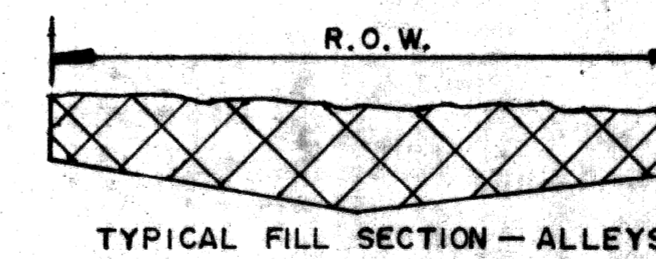
\* CONSTRUCTION ONLY



SECTION A-A  
NO SCALE



SECTION B-B  
NO SCALE



REFERENCE DRAWINGS		DESIGNED BY	APPROVED:	<p align="center">CITY OF DETROIT CITY ENGINEERING DIVISION - EPMD BUREAUS OF STREETS AND HIGHWAYS FOR COMMUNITY AND ECONOMIC DEVELOPMENT DEPARTMENT</p>	<p align="center">ALLEY PAVING, PAVEMENT REMOVAL AND MISCELLANEOUS CONSTRUCTION IN THE AREA BOUNDED BY DUNEDIN - POE - LOTHROP - SEWARD QUANTITY AND SECTION SHEET</p>	SHEET 2 OF 6 SHEETS
		DRAWN BY <i>D. G. U.</i>	ENGINEER OF STREETS			CONTRACT NO. PW 6619
		TRACED BY				ASSIGNMENT 80-14-04 NO. & 80-14-05
		CHECKED BY <i>TALEY</i>				DATE 7-28-80
COORD	DESCRIPTION	ORN	CK'D	AP'D	DATE	
REVISIONS LOCATED BY COORDINATES ON SHEET						
1	2	3	4	5	6	7

Sewer Approved  
7/12/18  
A. D. [Signature]

REVISIONS	DESCRIPTION

PLAN	GRADE	ESTIMATE	FINAL

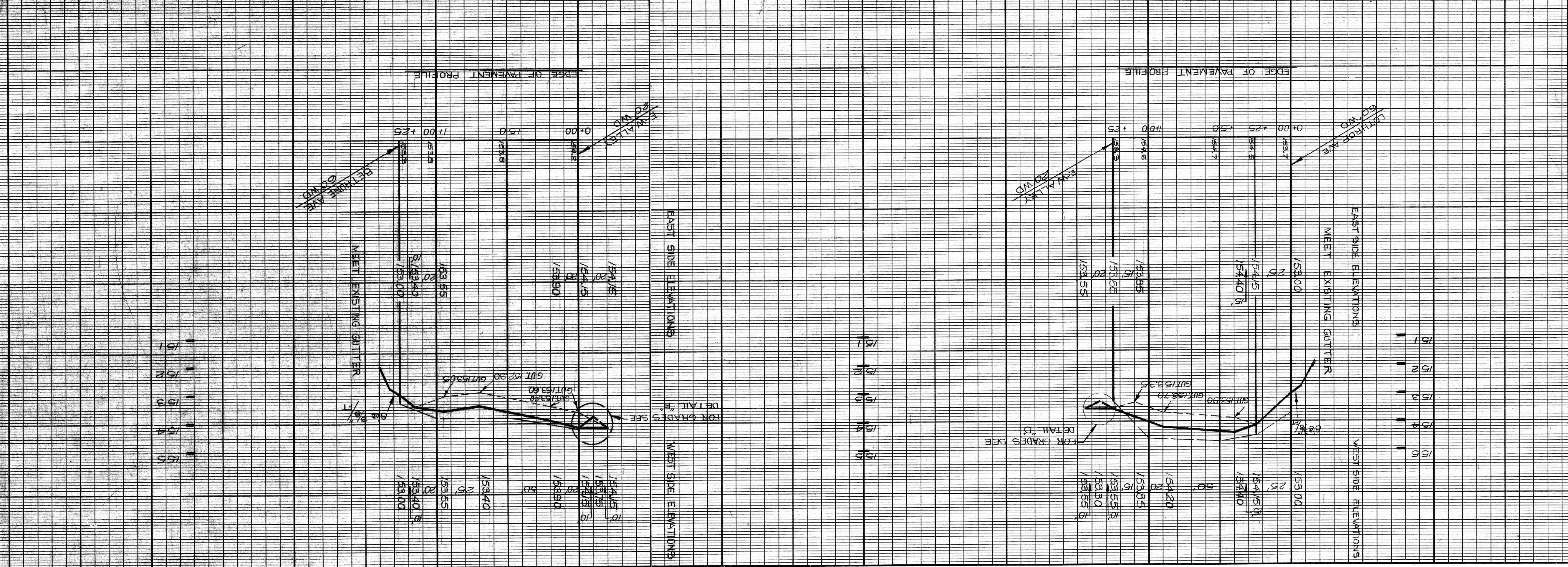
BY: J. S. [Signature]  
CHECKED BY: [Signature]  
DATE: [Date]

APPROVED BY:	
ENGINEER OF STREETS:	

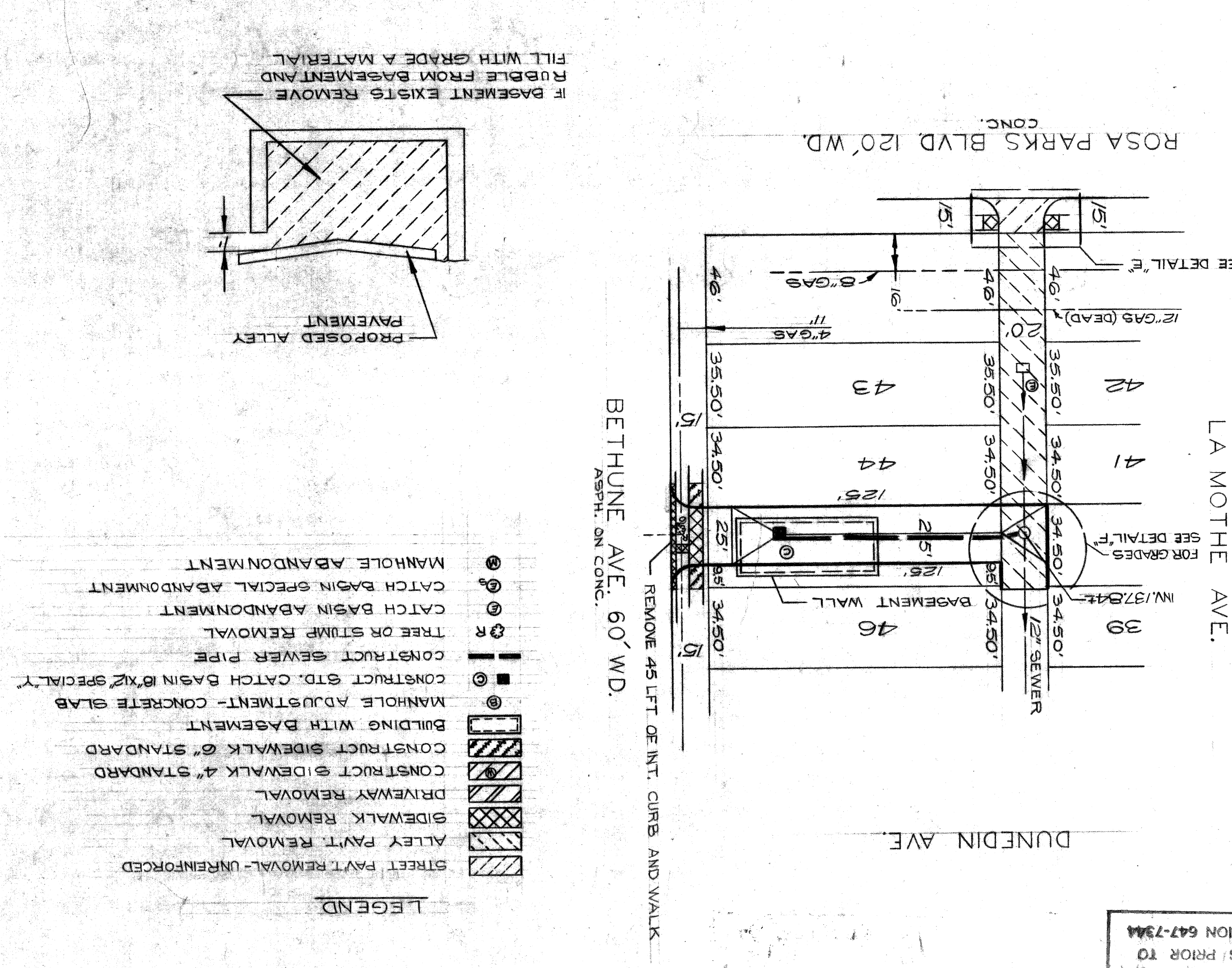
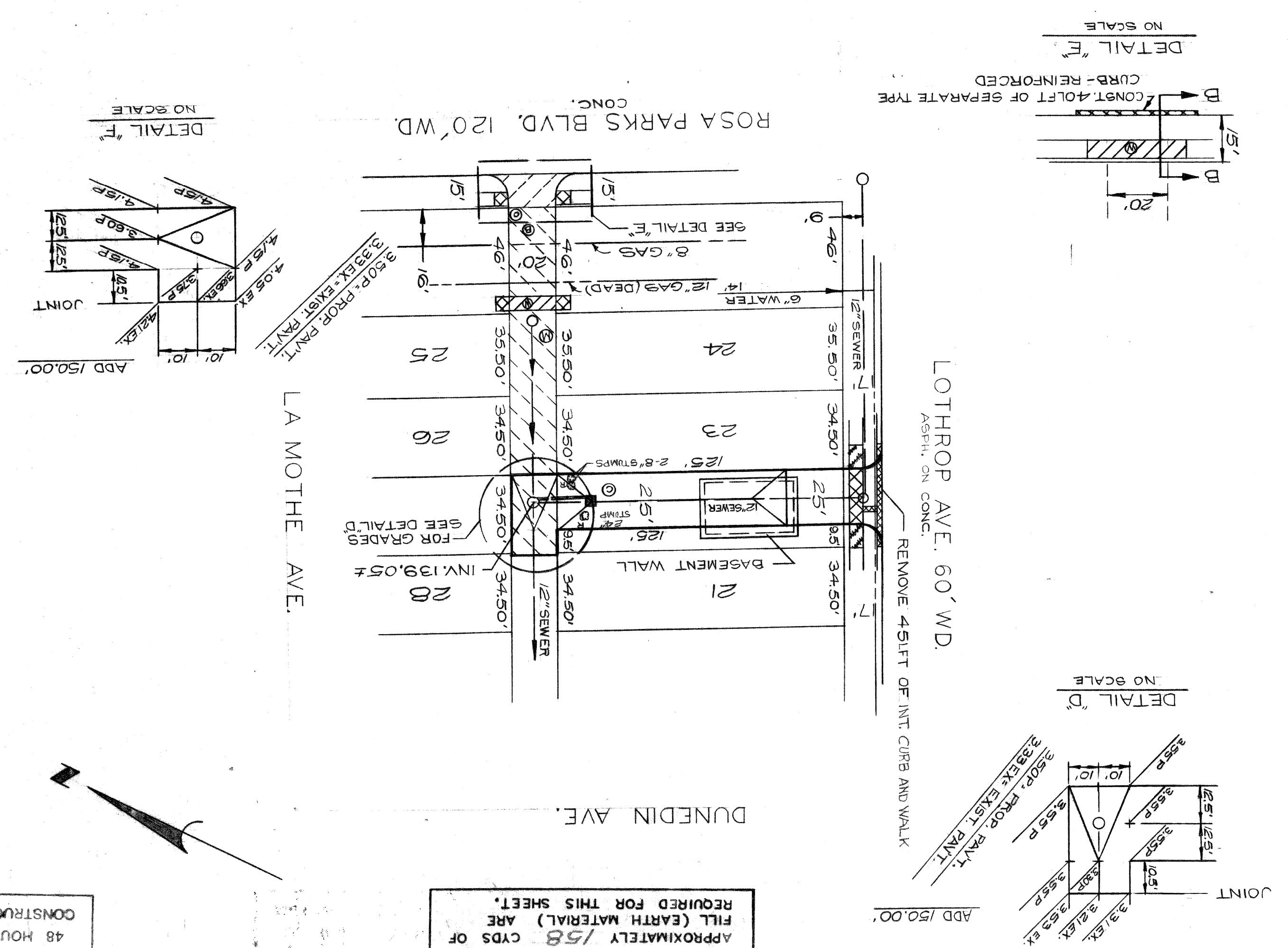
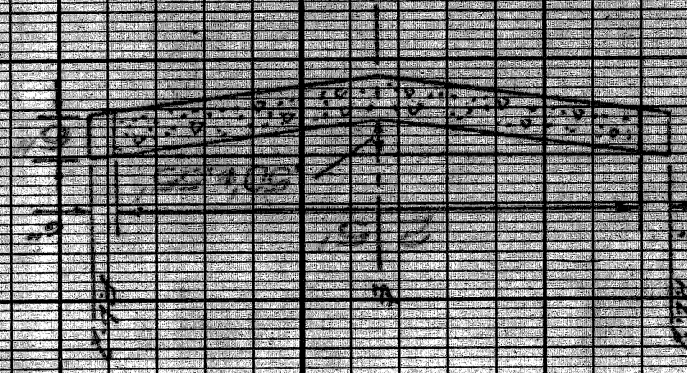
CITY OF DETROIT  
CITY ENGINEERING DIVISION  
D. P. W.  
BUREAUS OF STREETS AND HIGHWAYS  
FOR  
COMMUNITY AND ECONOMIC DEVELOPMENT DEPARTMENT

PAVING OF 2-N-S ALLEYS AND MISCELLANEOUS CONSTRUCTION IN THE AREA BOUNDED BY W - DUNEDIN E-ROSA PARKS BLVD S - LOTHPOR N-BETHUNE PAVING PLAN

INDEX NO.	SHEET 3 OF 6 SHEETS
CONTRACT NO.	PW 6611
ASSIGNMENT NO.	80-14-
DATE	7-28-80



TYPICAL SECTION

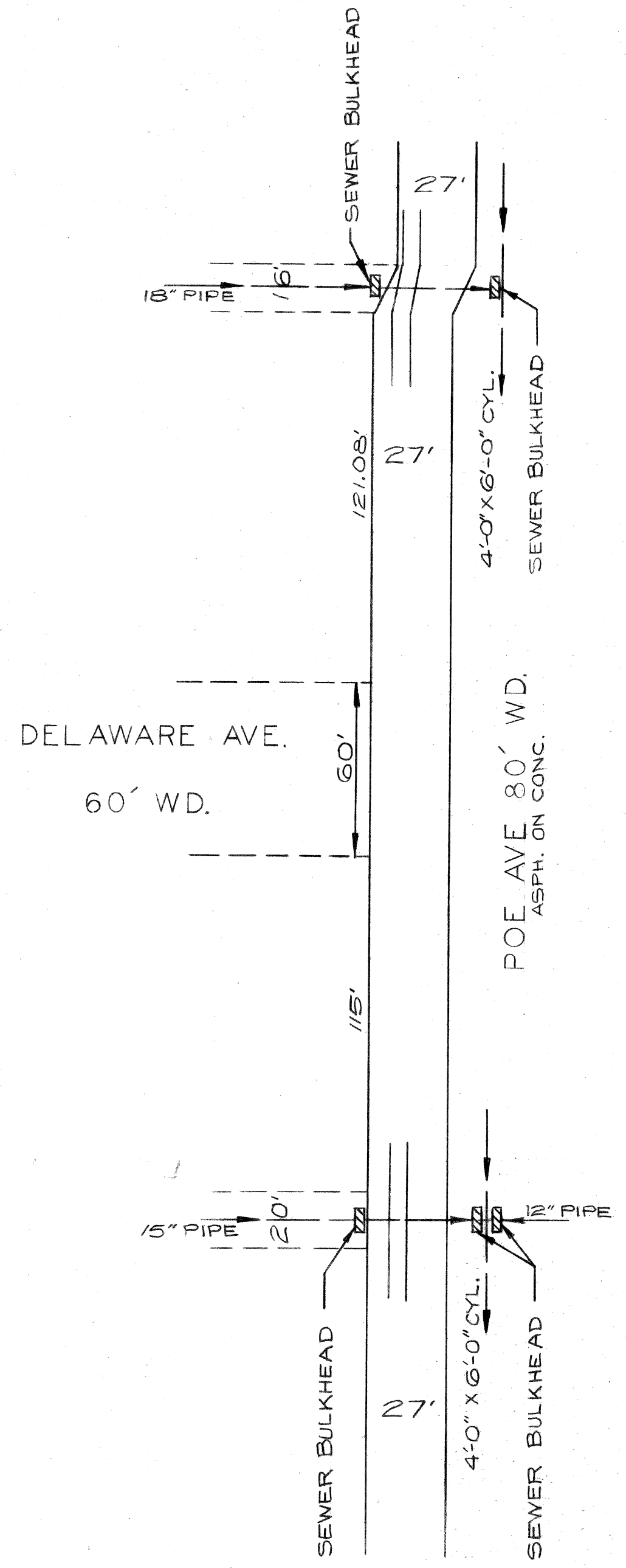
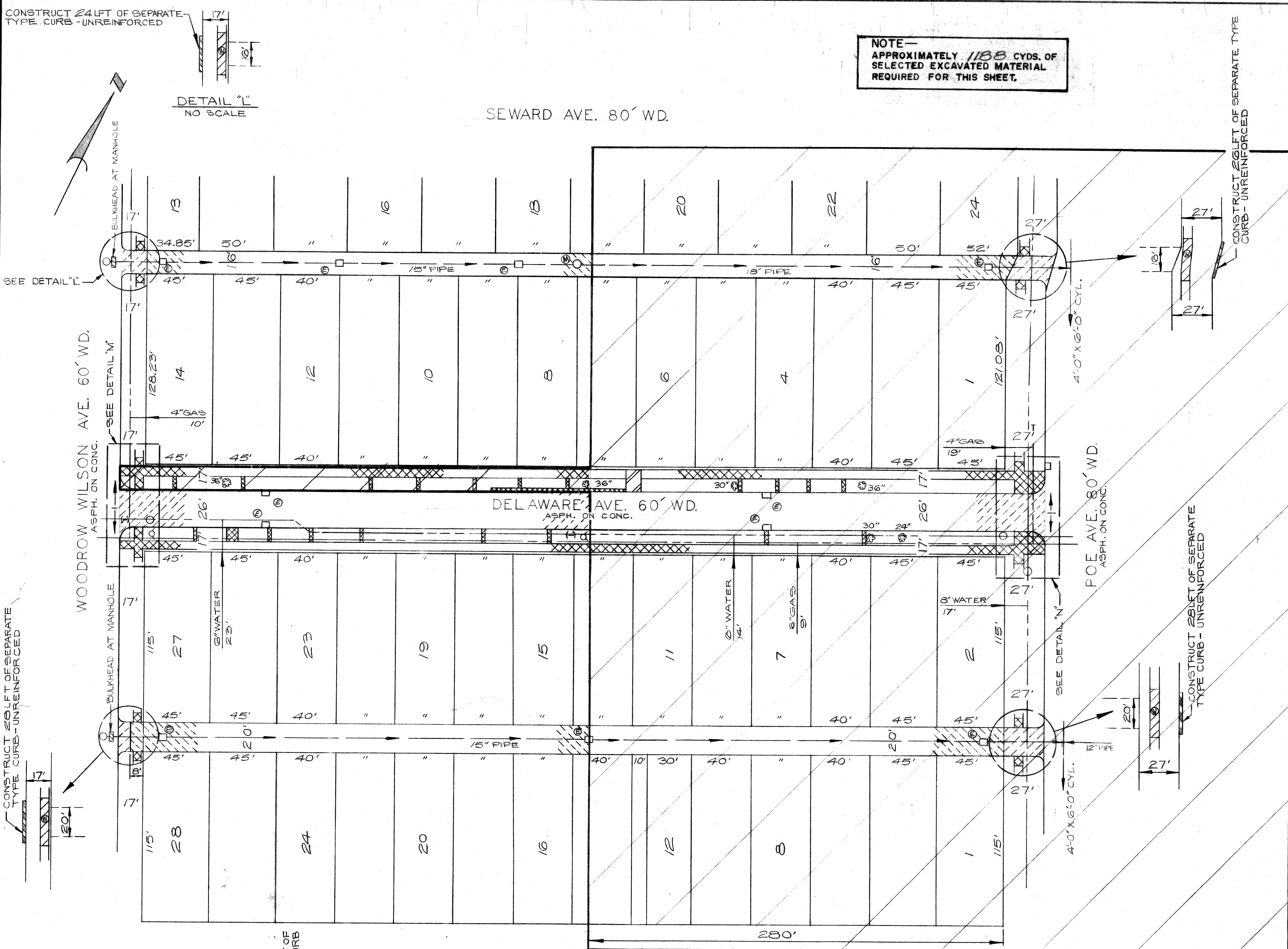


- LEGEND**
- STREET PAVT REMOVAL - UNREINFORCED
  - ALLEY PAVT REMOVAL
  - SIDEWALK REMOVAL
  - DRIVEWAY REMOVAL
  - CONSTRUCT 8" SIDEWALK 4" STANDARD
  - CONSTRUCT SIDEWALK 6" STANDARD
  - MANHOLE ADJUSTMENT - CONCRETE SLAB
  - CONSTRUCT STD. CATCH BASIN 18" X 24" SPECIAL
  - CONSTRUCT SEWER PIPE
  - TREE OR STUMP REMOVAL
  - CATCH BASIN ABANDONMENT
  - CATCH BASIN SPECIAL ABANDONMENT
  - MANHOLE ABANDONMENT
- NOTES:**
- FOR UTILITY LEGEND SEE STD. DRAWING C-902
  - REPLACE SIDEWALK AS SHOWN ON THE PLANS OR AS DIRECTED BY THE ENGINEER
  - FOR QUANTITIES SEE SHEET #
  - FOR SEPARATE TYPE CURB DETAIL SEE STD. DRAWING C-4501
  - FOR TYPICAL SECTIONS SEE SHEET #
  - ALL ALLEY RADIUSES UNLESS OTHERWISE NOTED
- BENCH MARKS**
- P.M. 31-251A N.E. COR. GD. BLVD & WOODROW WILSON
  - P.M. 31-251B N.E. COR. GD. BLVD & ROSA PARKS BLVD
  - C.B.M. HYD. N.W. COR. ROSA PARKS BLVD & BETHUNE
  - C.B.M. HYD. E.W. COR. ROSA PARKS BLVD & LA MOTHE
  - C.B.M. HYD. E.W. COR. ROSA PARKS BLVD & LOTHPOR
- HORIZONTAL CONTROL**
- ROSA PARKS BLVD. [Diagram showing stationing and offset from centerline]
- BETHUNE [Diagram showing stationing and offset from centerline]
- LOTHPOR [Diagram showing stationing and offset from centerline]
- LA MOTHE [Diagram showing stationing and offset from centerline]

DETAIL "L" NO SCALE

NOTE - APPROXIMATELY 1188 CYDS. OF SELECTED EXCAVATED MATERIAL REQUIRED FOR THIS SHEET.

FOR NOTES SEE SHEET # 10  
FOR LEGEND SEE SHEET # 10

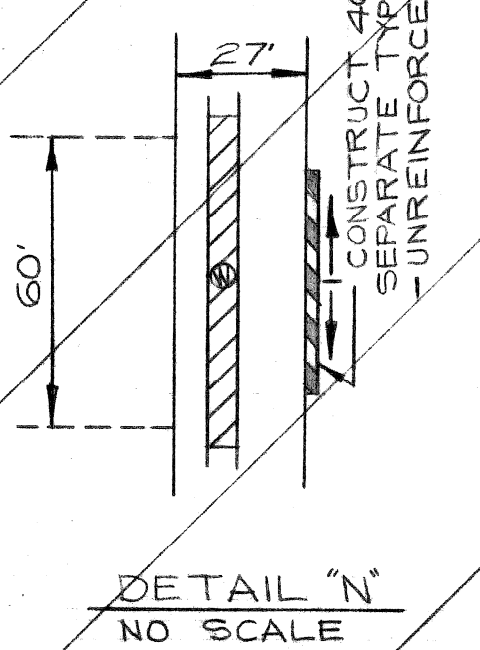
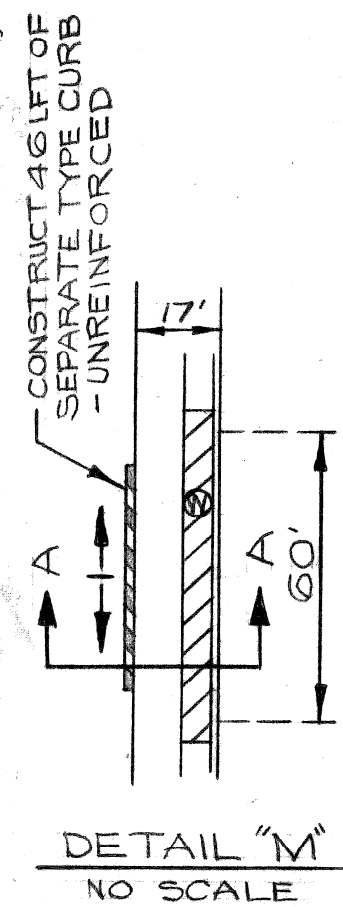


CONSTRUCT 24-LFT OF SEPARATE-TYPE CURB - UNREINFORCED

CONSTRUCT 24-LFT OF SEPARATE-TYPE CURB - UNREINFORCED

CONSTRUCT 24-LFT OF SEPARATE-TYPE CURB - UNREINFORCED

SCALE 1" = 40'



NOT IN THIS CONTRACT

BEFORE STARTING CONSTRUCTION - CONTRACTOR MUST CHECK WITH UTILITIES FOR LOCATIONS OF EXISTING STRUCTURES WHETHER OR NOT INDICATED ON PLANS

CALL MISS DIG  
48 HOURS PRIOR TO  
CONSTRUCTION 547-7344

COORD	DESCRIPTION	DRN	CK'D	AP'D	DATE

DESIGNED BY	D. G. U.
DRAWN BY	N. P. U.
TRACED BY	
CHECKED BY	TAI/E

APPROVED:	
ENGINEER OF STREETS	

CITY OF DETROIT  
CITY ENGINEERING DIVISION - D.P.W.  
BUREAUS OF STREETS AND HIGHWAYS  
FOR  
COMMUNITY AND ECONOMIC DEVELOPMENT DEPARTMENT

ALLEY PAVING, PAVEMENT REMOVAL  
AND MISCELLANEOUS CONSTRUCTION  
IN THE AREA BOUNDED BY  
DUNEDIN - POE - LOTHROP - SEWARD  
REMOVAL AND UTILITY SHEET

SHEET	4	OF	6	SHEETS
CONTRACT NO.	PW 6619			
ASSIGNMENT NO.	80-14-05			
DATE	7-28-80			

SEWER BULKHEADS

SEWER BULKHEADS SHALL BE CONSTRUCTED OF BRICK OR CONCRETE TO THE SPECIFIED THICKNESS AS SHOWN ON THE PLANS OR AS INDICATED BY THE ENGINEER.

BRICK BULKHEADS

THE SURFACE OF CONTACT OF THE SEWER WALL WITH THE BULKHEAD SHALL BE ROUGHENED BY BUSH HAMMERING OR CHISELING AND THEN CLEANED JUST PRIOR TO THE BULKHEAD CONSTRUCTION. SUCH BULKHEADS SHALL BE VERTICAL WITH ALTERNATE HEADER AND STRETCHER COURSES LAID IN MORTAR. VERTICAL JOINTS IN ADJACENT COURSES SHALL BE STAGGERED. BRICK SHALL BE LAID WITH FULL MORTAR JOINTS. ALL AVAILABLE BEARING AREAS SHALL BE COVERED WITH MORTAR SPREAD IN AN EVEN LAYER WITHOUT SPLITTING OR FURROWING, AND ALL VERTICAL AND INTERIOR JOINTS SHALL ALSO BE SOLIDLY FILLED WITH MORTAR. THE COURSES SHALL BE LAID EVEN. BULKHEADS SHALL BE CONSTRUCTED AS PLUMB AS IS PRACTICAL.

CONCRETE BULKHEADS

ALL BULKHEADS SHALL BE CONSTRUCTED WITH GRADE "A" CONCRETE TO A THICKNESS OF AT LEAST ONE-THIRD THE DIAMETER OF THE PIPE BUT IN NO CASE LESS THAN TWELVE INCHES. SEWER WALLS SHOULD BE BRUSH CLEANED BEFORE CONCRETE BULKHEADS ARE POURED. (THAT IS ALL THE SLUDGE AND DEBRIS SHOULD BE OUT OF THE WAY)

DETROIT EDISON COMPANY  
PHONE: 237-8000

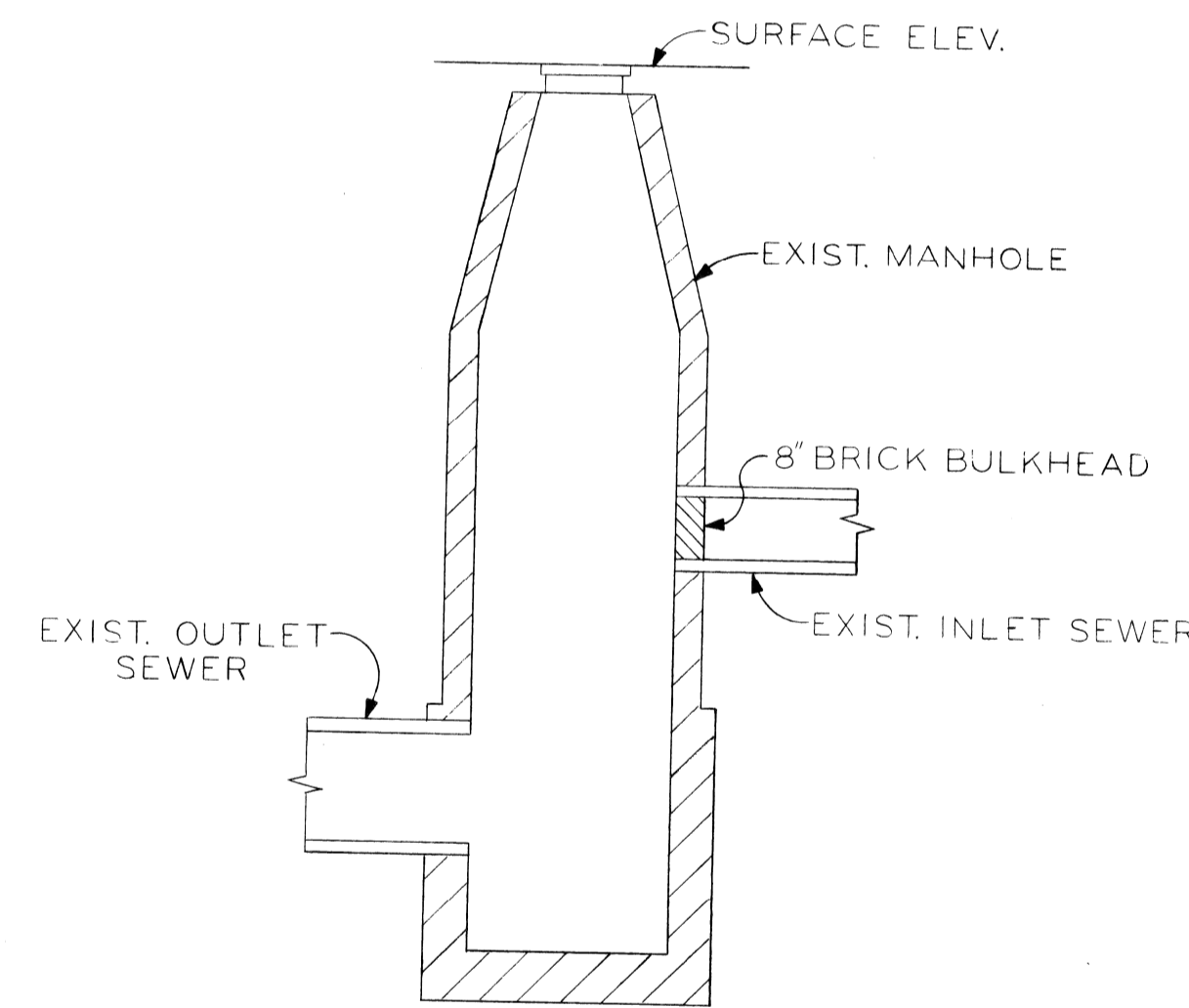
MICHIGAN CONSOLIDATED GAS COMPANY  
PHONE: 965-8000

MICHIGAN BELL TELEPHONE COMPANY  
PHONE: 372-8703

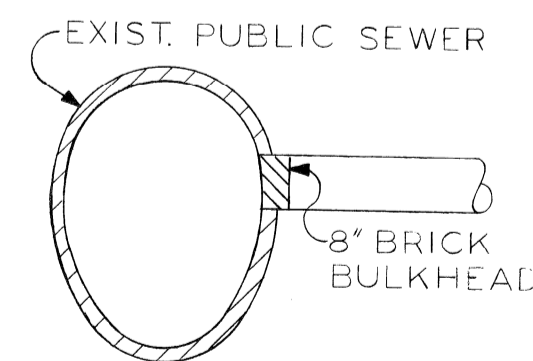
PUBLIC LIGHTING COMMISSION  
PHONE: 875-0972

GENERAL NOTES

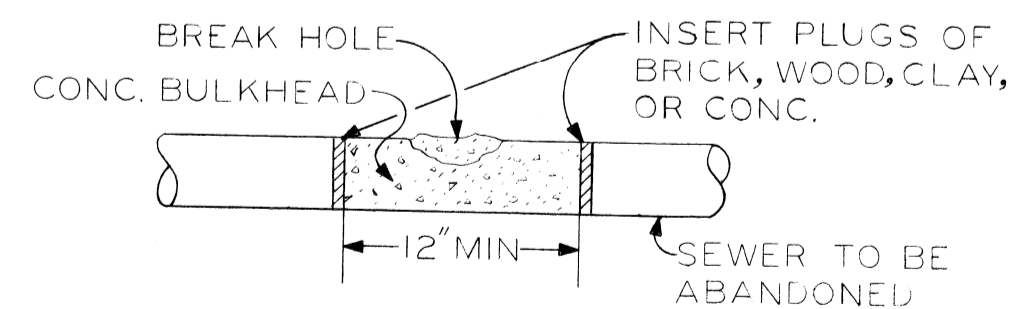
1. IN COMPLIANCE WITH PUBLIC ACT 53 OF THE STATE OF MICHIGAN (EFFECTIVE AUG. 1, 1974) THE CONTRACTOR SHALL NOTIFY IN ADVANCE OF CONSTRUCTION, ALL PUBLIC AND PRIVATE OWNERS HAVING EXISTING FACILITIES IN OR NEAR THE IMMEDIATE WORKING AREA. FOR CONVENIENCE THE KNOWN UTILITY OWNERS ARE LISTED ON THIS DRAWING. THIS LISTING DOES NOT, HOWEVER, RELIEVE THE CONTRACTOR OF THE RESPONSIBILITY OF VERIFYING UTILITY LOCATIONS AND NOTIFYING ALL UTILITY OWNERS AND MISS-DIG. (PHONE: 482-7171 IN AREA CODE 800.)
2. LOCATIONS OF EXISTING CATCH BASIN DRAINS ARE APPROXIMATE.
3. UTILITIES CROSSING THE SEWERS TO BE CONSTRUCTED IN OPEN CUT ARE SHOWN IN PROFILE. ELEVATIONS AND LOCATIONS ARE APPROXIMATE.
4. VERIFY EXISTING INVERT ELEVATIONS PRIOR TO START OF CONSTRUCTION.



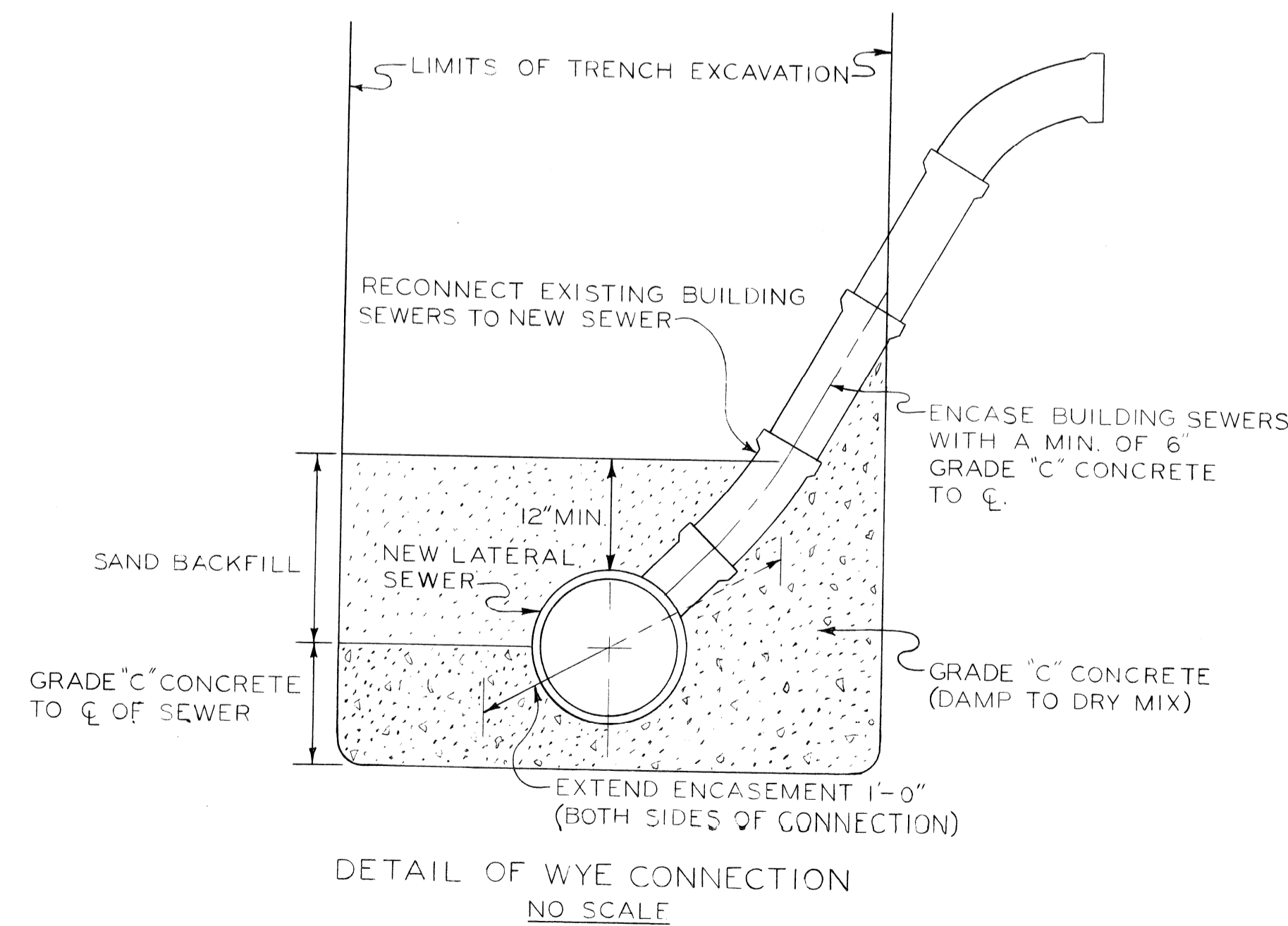
BULKHEAD CONSTRUCTED FROM WITHIN MANHOLE  
NO SCALE



TYPICAL CROSS SECTION OF BULKHEAD CONSTRUCTED FROM WITHIN THE SEWER  
NO SCALE



TYPICAL DETAIL OF BULKHEAD CONSTRUCTED AND POURED FROM OUTSIDE SEWER AFTER EXCAVATING TO SEWER DEPTH  
NO SCALE



DETAIL OF WYE CONNECTION  
NO SCALE

F					
E					
D					
C					
B					
A					
	CO-OR.	DESCRIPTION	APRVD.	DATE	
		REVISIONS			
					DESIGNED BY
					DRAWN BY <i>William Baker Jr.</i>
					CHECKED BY <i>DWD</i>
					APPROVED
					<i>D. Seabra</i>
					DIRECTOR OF ENGINEERING
					DIRECTOR

PAVING OF 2 N-S ALLEYS & MISCELLANEOUS CONSTRUCTION IN THE AREA BOUNDED BY W-DUNEDIN E-ROSA PARKS BLVD. S-LOTHROP N-BETHUNE  
SEWER ALTERATIONS - PLAN & PROFILE  
SCALE AS SHOWN

CITY OF DETROIT  
WATER AND SEWERAGE DEPARTMENT  
ENGINEERING DIVISION  
SECTION MAP 211-A TOWN RANGE SECTION PORTION CODE WORK ORDER NO. S-136-7323

SHEET 5 OF 6 SHEETS  
M.D.P.H. PERMIT NO.  
FED. REF. NO.  
CONTRACT NO. PW 6619  
D-