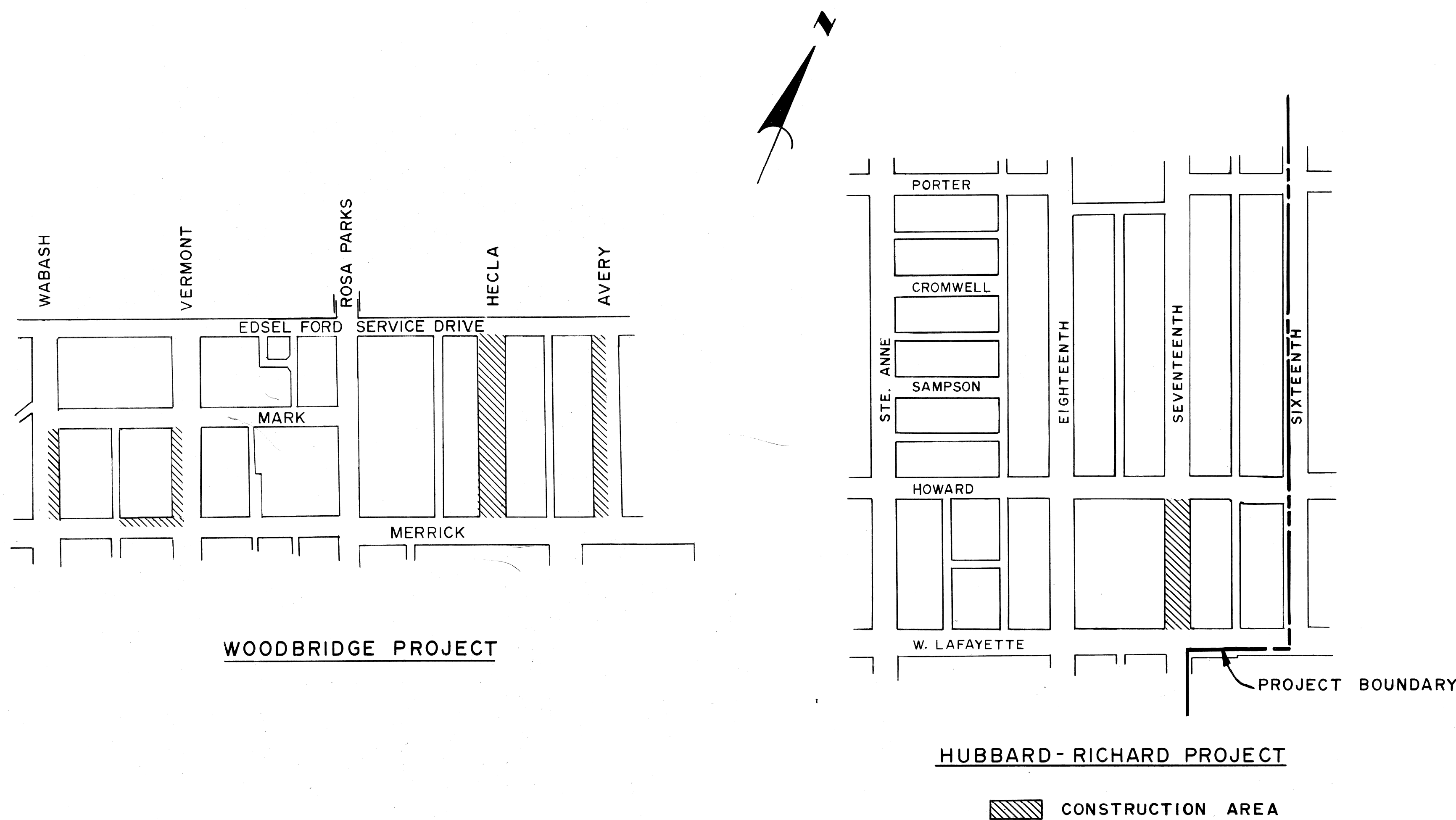


CITY OF DETROIT
CITY ENGINEERING DIVISION - DPW

PLANS FOR PROPOSED

REMOVAL OF SEVENTEENTH STREET
LAFAYETTE TO HOWARD AND MISCELLANEOUS CONSTRUCTION
HUBBARD RICHARD REHABILITATION PROJECT
AND
CURB AND SIDEWALK REPLACEMENT
WOODBIDGE REHABILITATION PROJECT
FOR
COMMUNITY AND ECONOMIC DEVELOPMENT DEPARTMENT



- INDEX OF SHEETS
1. TITLE SHEET
 2. CONSTRUCTION AND QUANTITIES
 - 3-4. SEWER PLANS

PROJECT: REMOVAL OF SEVENTEENTH STREET LAFAYETTE TO HOWARD AND MISCELLANEOUS CONSTRUCTION HUBBARD RICHARD REHABILITATION PROJECT AND CURB AND SIDEWALK REPLACEMENT WOODBIDGE REHABILITATION PROJECT	CONTRACT NO. PW 6615
--	---

PLANS PREPARED BY
CITY ENGINEERING DIVISION - DPW

RECOMMENDED FOR APPROVAL	ENGINEER OF INSPECTION	DATE
RECOMMENDED FOR APPROVAL	<i>Naim G. Sawwas</i> ENGINEER OF STREETS	8/12/80
APPROVED	<i>M. Covert</i> ASSISTANT CITY ENGINEER	8/14/80
APPROVED	CITY ENGINEER	DATE

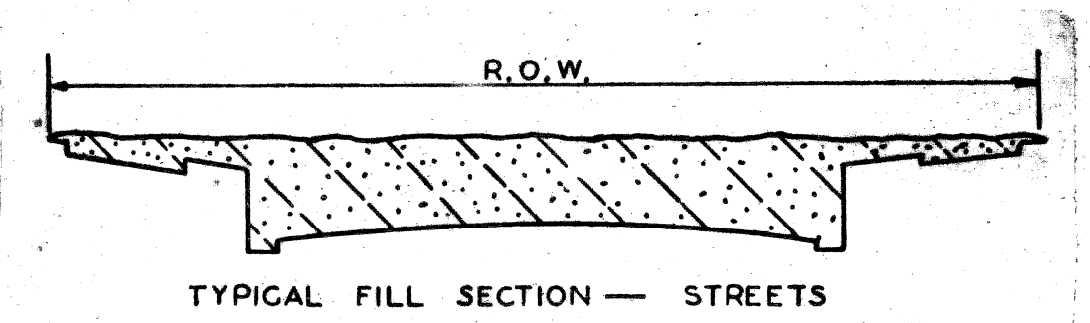
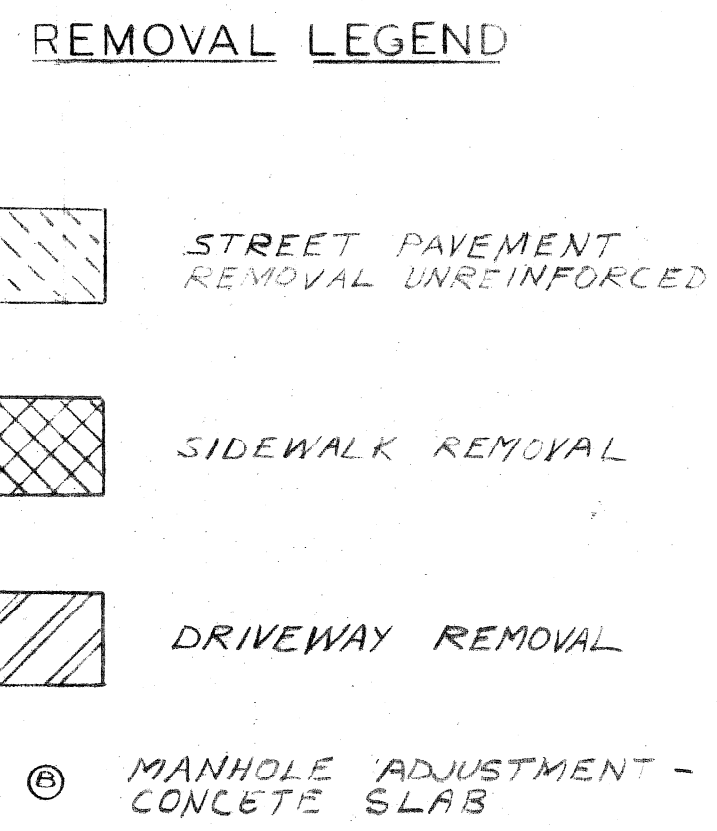
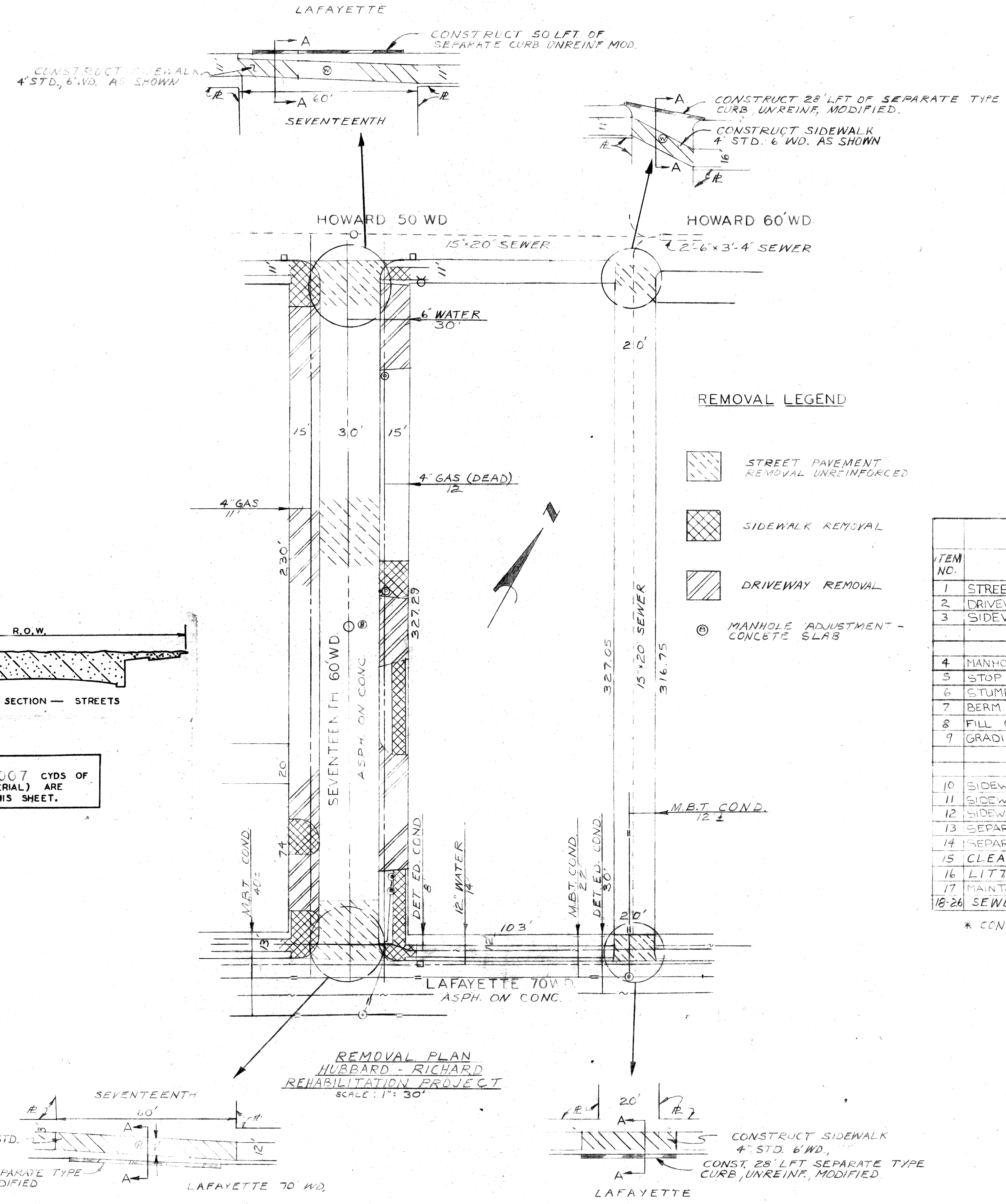
DATE AUGUST 12, 1980

DRWG. NO. 1

WOODBIDGE REHABILITATION PROJECT

- 1) FOR PLAN SEE TITLE SHEET
- 2) REPLACE SIDEWALK IN THE FOLLOWING STREET MARGINS IN THE WOODBRIDGE PROJECT AS DIRECTED BY THE ENGINEER
 - a) EAST MARGIN WABASH FROM MERRICK TO MARK
 - b) WEST MARGIN VERMONT FROM MERRICK TO MARK
 - c) NORTH MARGIN MERRICK FROM ALLEY WEST OF VERMONT TO VERMONT
 - d) BOTH MARGINS OF HECLA FROM MERRICK TO EDESEL FORD SERVICE DR.
 - e) WEST SIDE OF AVERY FROM MERRICK TO EDESEL FORD SERVICE DR.
- 3) REPLACE SEPARATE TYPE CURB ON THE FOLLOWING STREETS IN THE WOODBRIDGE PROJECT WHERE DIRECTED BY THE ENGINEER
 - a) EAST SIDE OF WABASH FROM MERRICK TO MARK
 - b) WEST SIDE OF HECLA BETWEEN MERRICK TO FORD SERVICE DR.
 - c) RETURNING IN MERRICK AS DIRECTED BY THE ENGINEER

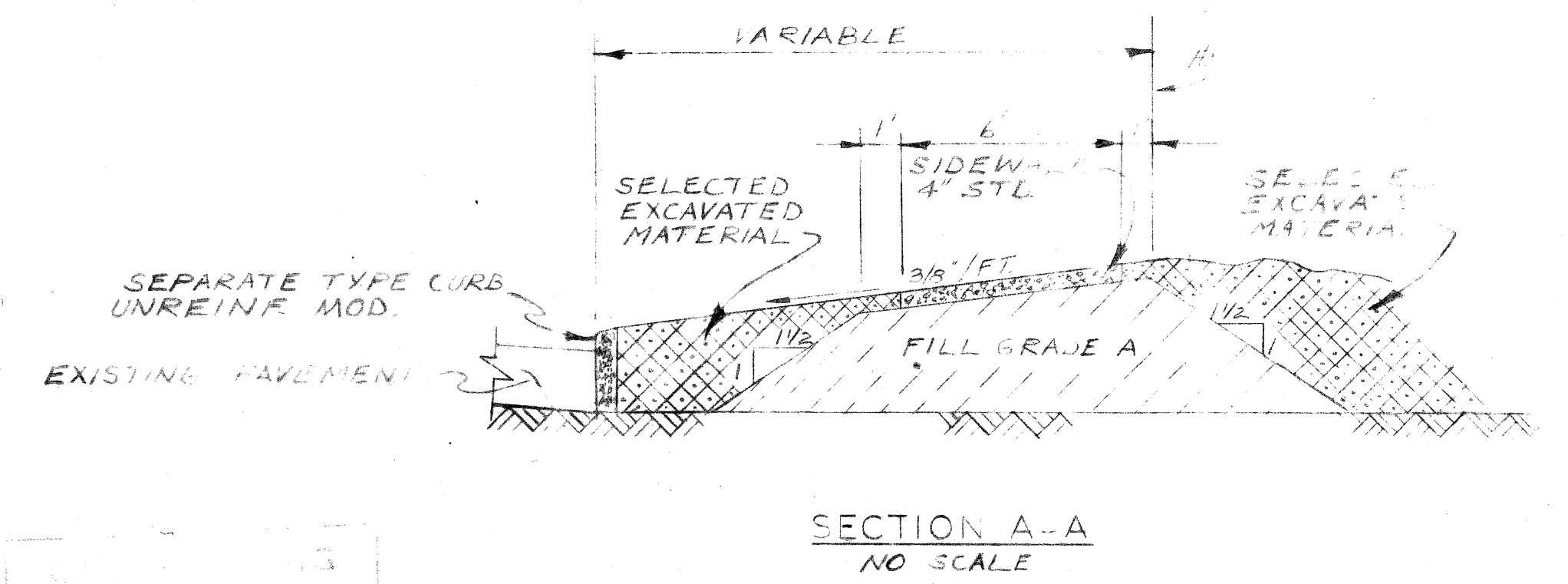
- GENERAL NOTES:**
- 1) FOR UTILITY LEGEND SEE STANDARD DRAWING C 902-A
 - 2) BEFORE STARTING CONSTRUCTION THE CONTRACTOR MUST CHECK WITH THE UTILITIES TO VERIFY THE LOCATION OF EXISTING STRUCTURES WHETHER OR NOT THEY ARE SHOWN ON THE PLAN



NOTE - APPROXIMATELY 1007 CYDS OF FILL (EARTH MATERIAL) ARE REQUIRED FOR THIS SHEET.

QUANTITY LIST					
ITEM NO.	DESCRIPTION	UNIT	HUBBARD RICHARD	WOODBIDGE	TOTAL
1	STREET PAVEMENT REMOVAL UNREINFORCED	SYDS	1295		1295
2	DRIVEWAY REMOVAL	SQFT	1434		1434
3	SIDEWALK REMOVAL	SQFT	1855	288	2143
4	MANHOLE ADJUSTMENT-CONCRETE SLAB	EACH	1		1
5	STOP BOX ADJUSTMENT	EACH	1		1
6	STUMP REMOVAL			1	1
7	BERM GRADING	SYDS		304	304
8	FILL GRADE 'A'	CYDS	91		91
9	GRADING ABANDONED STREETS	SYDS	2180		2180
10	SIDEWALK REPLACEMENT			11,246	11,246
11	SIDEWALK 4" STD STANDARD	SQFT	11,246		11,246
12	SIDEWALK 6" STD STANDARD	SQFT		288	288
13	SEPARATE TYPE CURB REPLACEMENT	LF		440	440
14	SEPARATE TYPE CURB UNREINFORCED MODIFIED	LF	150		150
15	CLEANING STRUCTURES	EACH			1
16	LITTER REMOVAL	CYDS			10
17	MAINTAINING TRAFFIC				1,144,000
18-26	SEWER ITEMS, SEE SHEET 3				

* CONSTRUCTION ONLY



DESIGNED BY	LA
DRAWN BY	L1STON LA
TRACED BY	
CHECKED BY	L1STON

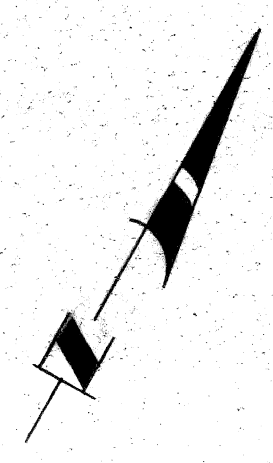
APPROVED: *Wain J. Lawas*
ENGINEER OF STREETS

CITY OF DETROIT
CITY ENGINEERING DIVISION - D.P.W.
BUREAU OF STREETS AND HIGHWAYS
FOR
COMMUNITY AND ECONOMIC DEVELOPMENT DEPARTMENT

REMOVAL OF SEVENTEENTH STREET LAFAYETTE TO HOWARD AND MISCELLANEOUS CONSTRUCTION HUBBARD RICHARD REHABILITATION PROJECT AND CURB AND SIDEWALK REPLACEMENT WOODBRIDGE REHABILITATION PROJECT

CONSTRUCTION AND QUANTITIES

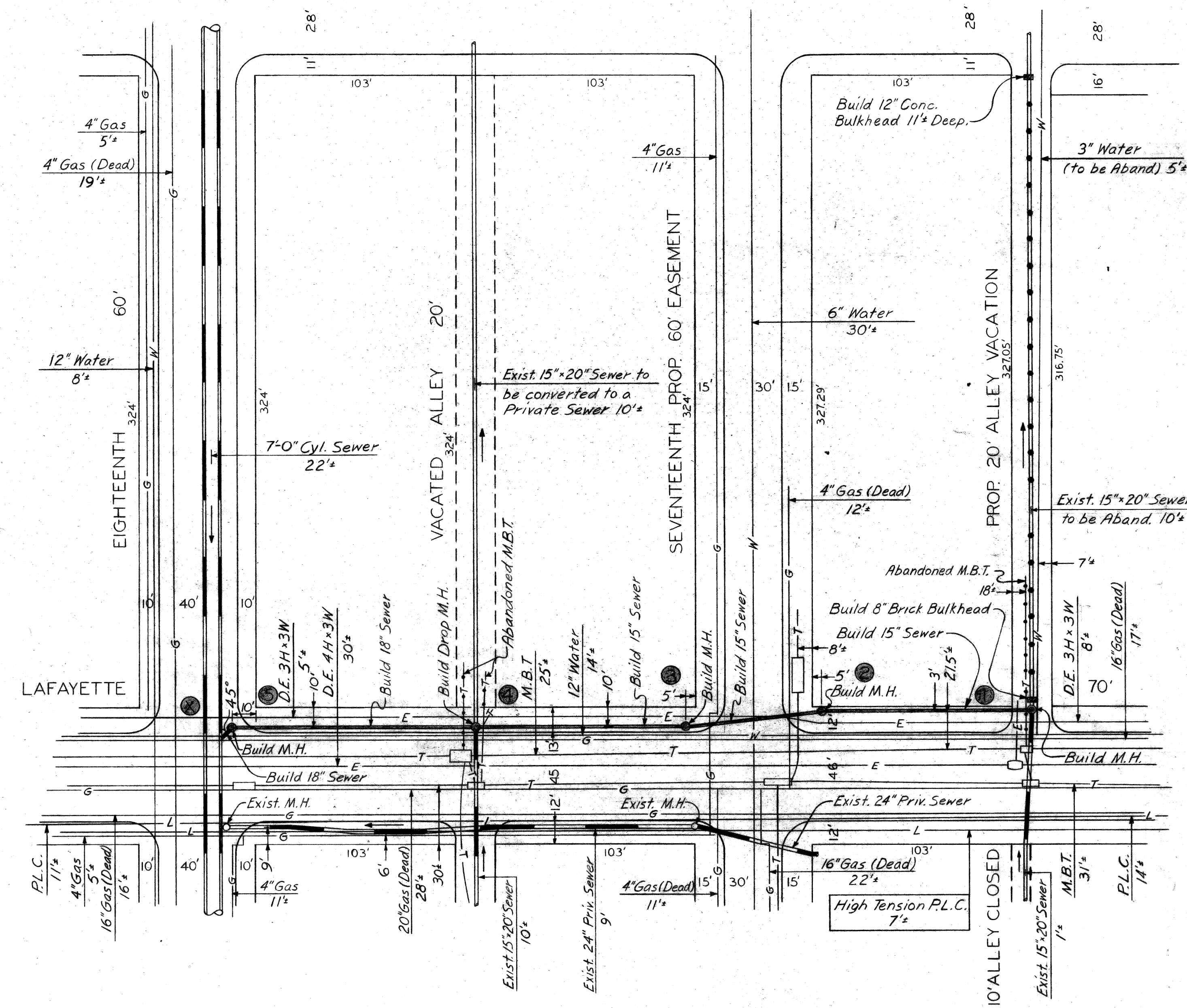
SHEET 2 OF 4 SHEETS
CONTRACT NO. PW 6615
ASSIGNMENT NO. 79-14-11
DATE AUGUST 13, 1980



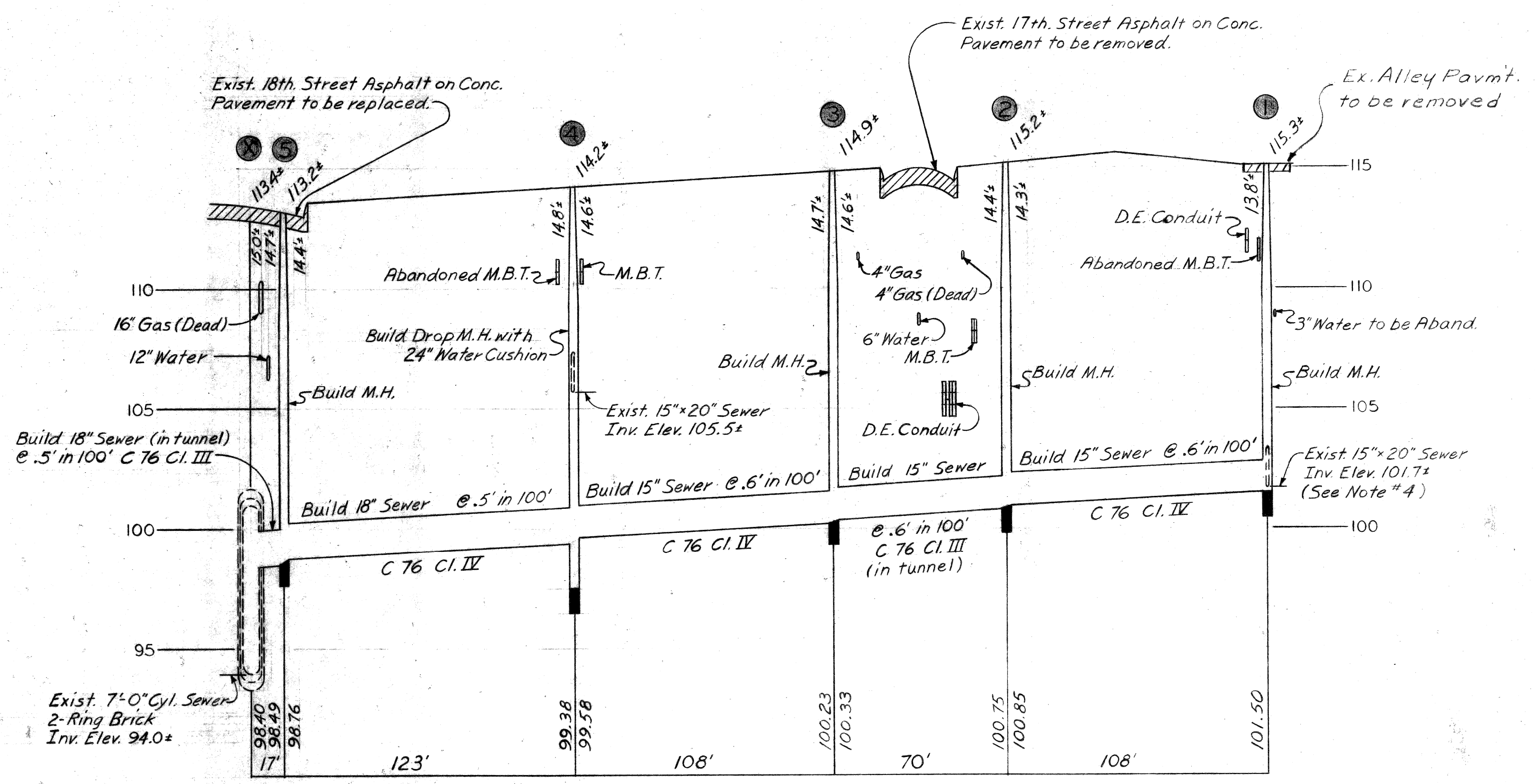
HOWARD

50'

60'



PLAN Scale: 1"=40'



PROFILE Scale: Hor. 1"=40', Vert. 1"=4'

NOTE
ALL PAVEMENT, CURB AND SIDEWALK REMOVAL AND REPLACEMENT NECESSARY TO CONSTRUCT THE SEWER SHALL BE INCIDENTAL TO THE COST OF SEWER CONSTRUCTION

F				
E				
D				
C				
B				
A				
DESCRIPTION	CHK'D	APRVD.	DATE	
REVISIONS				

DESIGNED BY *W.B.*
DRAWN BY *William Baker, Jr., 11/9/80*
CHECKED BY *W.B.*
12-25-80

APPROVED
W.B. Behrman
HEAD ENGINEER - WATER SYSTEM
D. Suber
DIVISION ENGINEER

REMOVAL OF SEVENTEENTH STREET LAFAYETTE TO HOWARD AND MISCELLANEOUS CONSTRUCTION HUBBARD RICHARD REHABILITATION PROJECT AND CURB AND SIDEWALK REPLACEMENT WOODBRIDGE REHABILITATION PROJECT

SEWER ALTERATIONS PLAN AND PROFILE

SCALE: AS SHOWN

CITY OF DETROIT
WATER AND SEWERAGE DEPARTMENT
ENGINEERING DIVISION

SECTION MAP	TOWN	RANGE	SECTION	PORTION CODE	WORK ORDER NO.
18 - B					S-136-7317

SHEET 3 OF 4
M.D.P.H./D.N.R. PERMIT NO.
FED. REF. NO.
CONTRACT NO. PW 6615
FILE NO.
D-

SEWER BULKHEADS

SEWER BULKHEADS SHALL BE CONSTRUCTED OF BRICK OR CONCRETE TO THE SPECIFIED THICKNESS AS SHOWN ON THE PLANS OR AS INDICATED BY THE ENGINEER.

BRICK BULKHEADS

THE SURFACE OF CONTACT OF THE SEWER WALL WITH THE BULKHEAD SHALL BE ROUGHENED BY BUSH HAMMERING OR CHISELING AND THEN CLEANED JUST PRIOR TO THE BULKHEAD CONSTRUCTION. SUCH BULKHEADS SHALL BE VERTICAL WITH ALTERNATE HEADER AND STRETCHER COURSES LAID IN MORTAR. VERTICAL JOINTS IN ADJACENT COURSES SHALL BE STAGGERED. BRICK SHALL BE LAID WITH FULL MORTAR JOINTS. ALL AVAILABLE BEARING AREAS SHALL BE COVERED WITH MORTAR SPREAD IN AN EVEN LAYER WITHOUT SPLITTING OR FURROWING, AND ALL VERTICAL AND INTERIOR JOINTS SHALL ALSO BE SOLIDLY FILLED WITH MORTAR. THE COURSES SHALL BE LAID EVEN. BULKHEADS SHALL BE CONSTRUCTED AS PLUMB AS IS PRACTICAL.

CONCRETE BULKHEADS

ALL BULKHEADS SHALL BE CONSTRUCTED WITH GRADE "A" CONCRETE TO A THICKNESS OF AT LEAST ONE-THIRD THE DIAMETER OF THE PIPE BUT IN NO CASE LESS THAN TWELVE INCHES. SEWER WALLS SHOULD BE BRUSH CLEANED BEFORE CONCRETE BULKHEADS ARE POURED. (THAT IS ALL THE SLUDGE AND DEBRIS SHOULD BE OUT OF THE WAY)

DETROIT EDISON COMPANY
PHONE: 237-8000

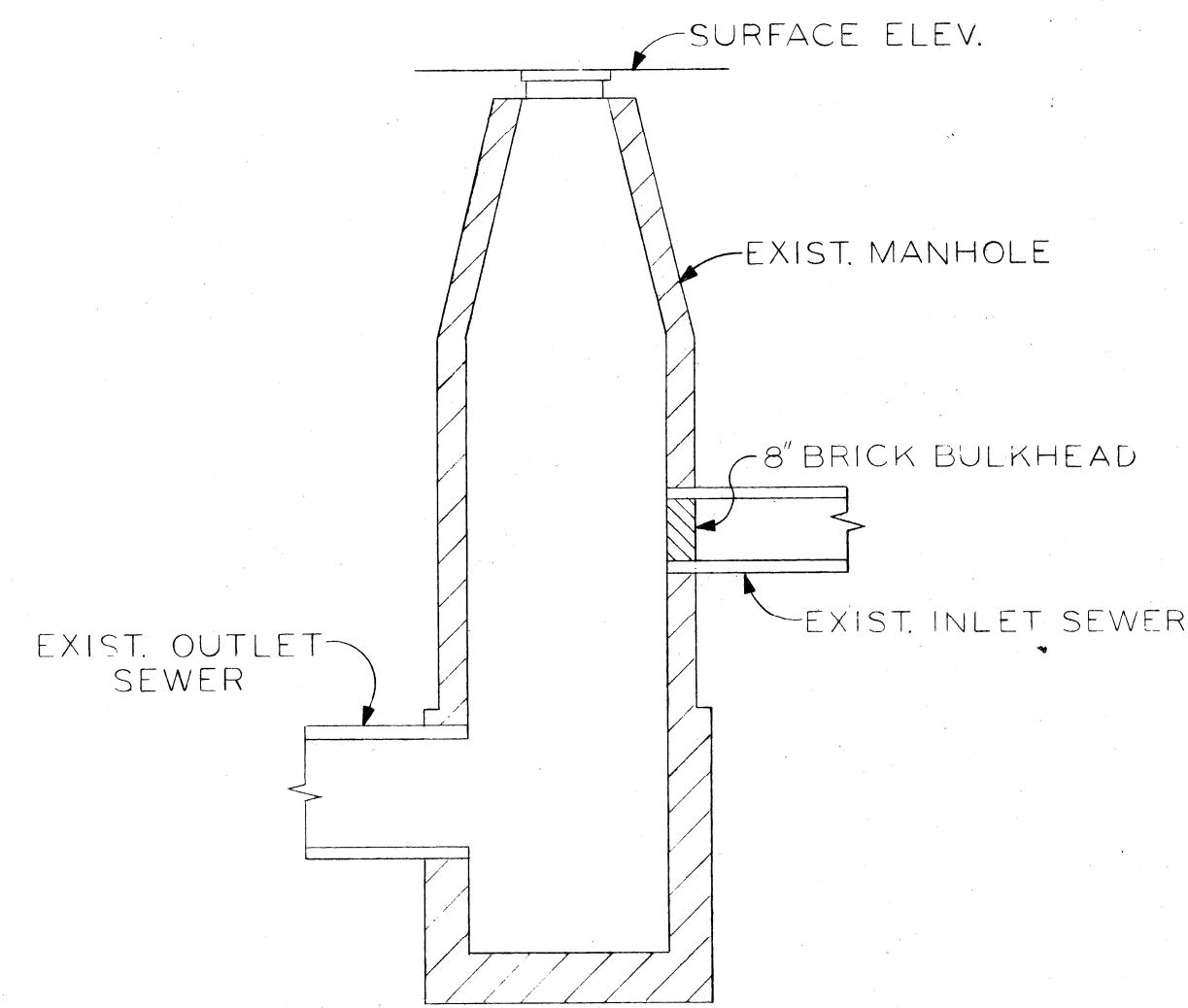
MICHIGAN CONSOLIDATED GAS COMPANY
PHONE: 965-8000

MICHIGAN BELL TELEPHONE COMPANY
PHONE: 372-8703

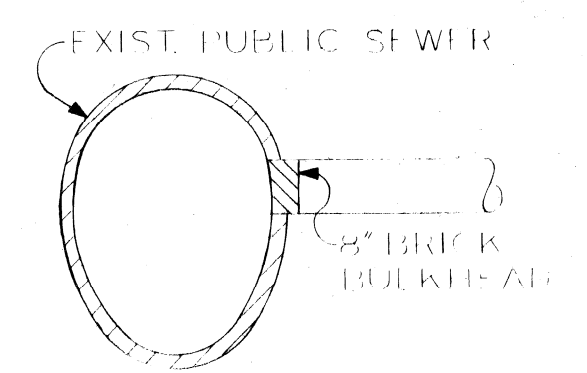
PUBLIC LIGHTING COMMISSION
PHONE: 875-0972

GENERAL NOTES

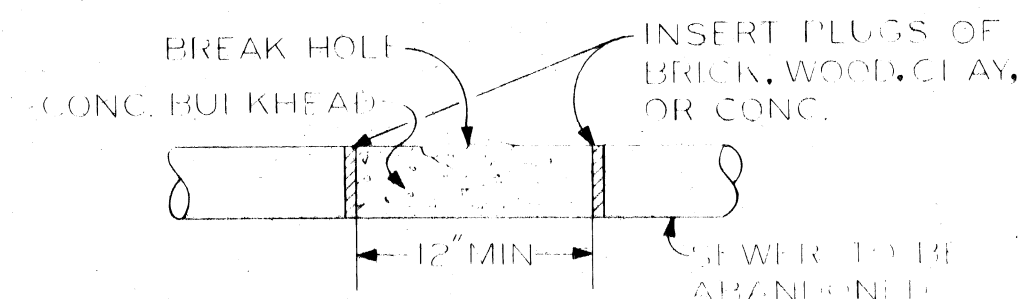
1. IN COMPLIANCE WITH PUBLIC ACT 53 OF THE STATE OF MICHIGAN (EFFECTIVE AUG. 1, 1974) THE CONTRACTOR SHALL NOTIFY IN ADVANCE OF CONSTRUCTION, ALL PUBLIC AND PRIVATE OWNERS HAVING EXISTING FACILITIES IN OR NEAR THE IMMEDIATE WORKING AREA. FOR CONVENIENCE THE KNOWN UTILITY OWNERS ARE LISTED ON THIS DRAWING. THIS LISTING DOES NOT, HOWEVER, RELIEVE THE CONTRACTOR OF THE RESPONSIBILITY OF VERIFYING UTILITY LOCATIONS AND NOTIFYING ALL UTILITY OWNERS AND MISS-DIG. (PHONE: 482-7171 IN AREA CODE 800.)
2. LOCATIONS OF EXISTING CATCH BASIN DRAINS ARE APPROXIMATE.
3. UTILITIES CROSSING THE SEWERS TO BE CONSTRUCTED IN OPEN CUT ARE SHOWN IN PROFILE. ELEVATIONS AND LOCATIONS ARE APPROXIMATE.
4. VERIFY EXISTING INVERT ELEVATIONS PRIOR TO START OF CONSTRUCTION.



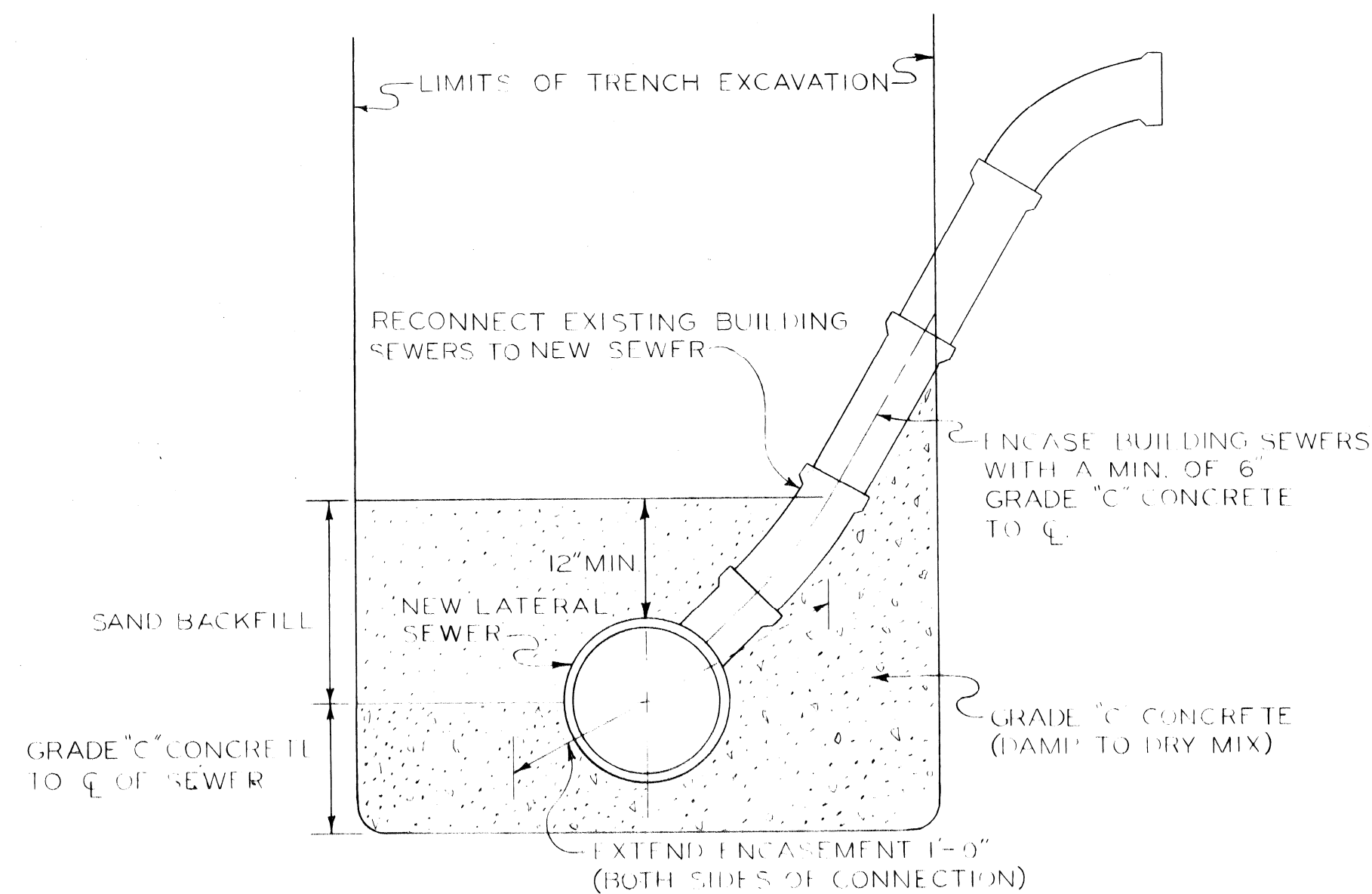
BULKHEAD CONSTRUCTED FROM WITHIN MANHOLE
NO SCALE



TYPICAL CROSS SECTION OF BULKHEAD CONSTRUCTED FROM WITHIN THE SEWER
NO SCALE



TYPICAL DETAIL OF BULKHEAD CONSTRUCTED AND POURED FROM OUTSIDE SEWER AFTER EXCAVATING TO SEWER DEPTH
NO SCALE



DETAIL OF WYE CONNECTION
NO SCALE

F					
E					
D					
C					
B					
A					
CO-OR.	DESCRIPTION	APRVD.	DATE	APPROVED	
	REVISIONS				

DESIGNED BY
DRAWN BY *William Swanson*
CHECKED BY *DWS*
APPROVED *[Signature]*
DIRECTOR OF ENGINEERING

REMOVAL OF SEVENTEENTH STREET LAFAYETTE TO HOWARD AND MISCELLANEOUS CONSTRUCTION HUBBARD RICHARD REHABILITATION PROJECT AND CURB AND SIDEWALK REPLACEMENT WOODBRIDGE REHABILITATION PROJECT

GENERAL NOTES & MISCELLANEOUS DETAILS

SCALE AS SHOWN

CITY OF DETROIT					
WATER AND SEWERAGE DEPARTMENT					
ENGINEERING DEPARTMENT					
SECTION MAP	TOWN	RANGE	SECTION	PORTION CODE	WORK ORDER NO.
18	B				136747

SHEET 4 OF 4
M.D.P.H. PERMIT NO.
FED. REF. NO.
CONTRACT NO. PW 6615
D-