

1-3-56	PROPOSED GAS LINE ADDED	J.K.	
2-4-56	PEMBROKE AT FENTON RETURN CHANGED	G.B.	DB 3/1/56
	DESCRIPTION	DNM	CHKD
	REVISIONS LOCATED BY COORDINATES ON SHEET		DATE

REFERENCE DRAWINGS	DESIGNED BY	APPROVED
	Naim Kawwas	<i>[Signature]</i>
	DRAWN BY	<i>[Signature]</i>
	Naim Kawwas	<i>[Signature]</i>
	TRACED BY	<i>[Signature]</i>
	BEHM	<i>[Signature]</i>
	CHECKED BY	CITY ENGINEER

CITY OF DETROIT
 DEPARTMENT OF PUBLIC WORKS
 CITY ENGINEERS OFFICE
 STREET DESIGN

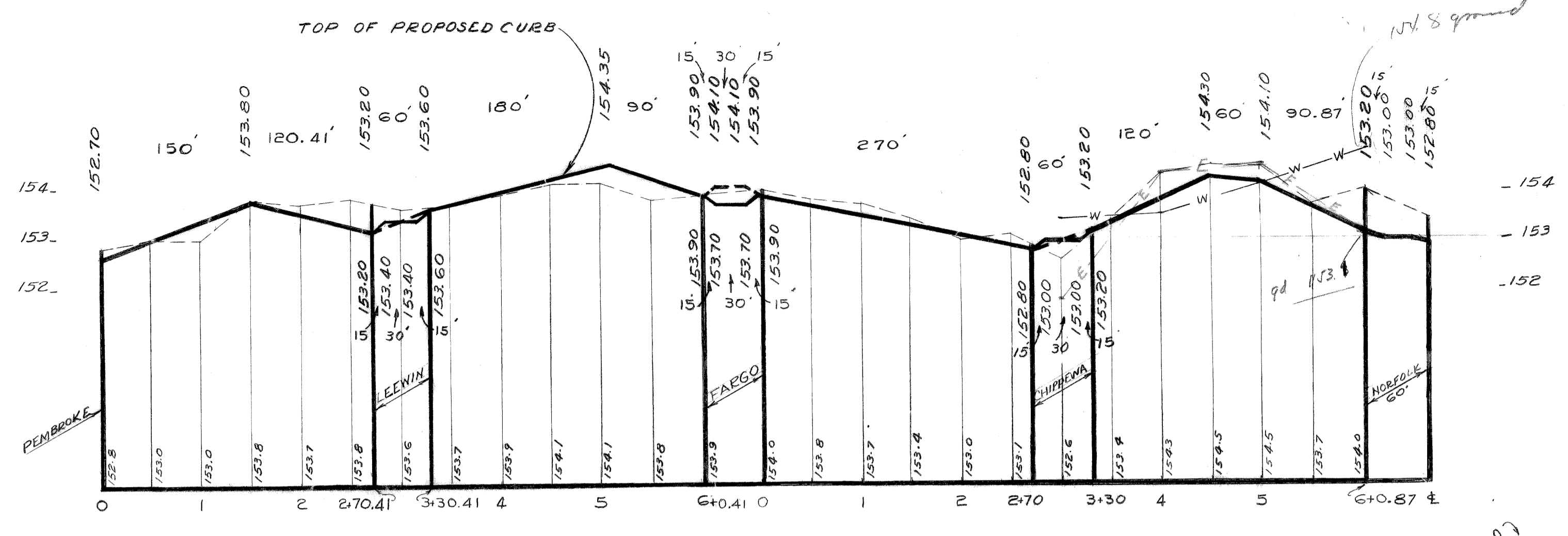
FILED UNDER FENTON

PAVING PLAN
 FOR
 HOLTZMAN AND SILVERMAN
 SUBDIVISION NO 7

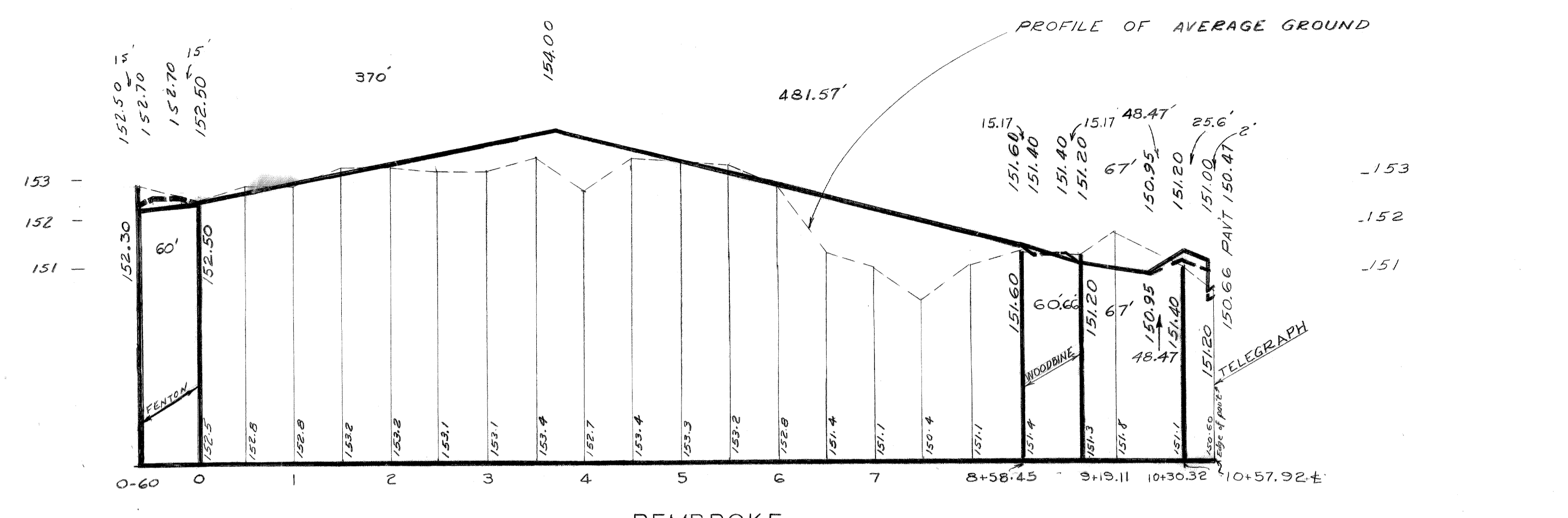
SHEET 1 OF 4 SHEETS
CONTRACT NO. PW 2718 P
DRWG NO. C-4013
DATE 11-8-55

DRAW-14

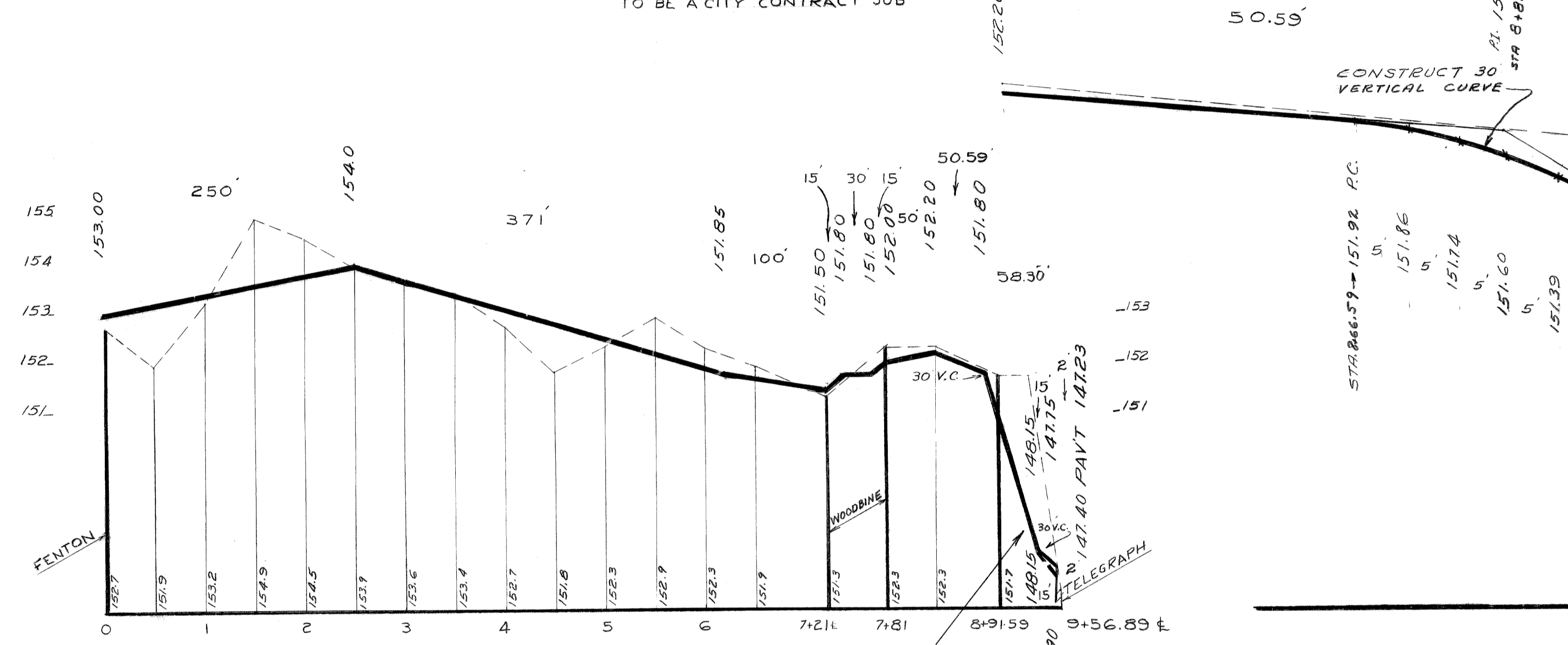
PAVING COMPLETE
 GRADE COMPLETE



FENTON
 TO BE A CITY CONTRACT JOB

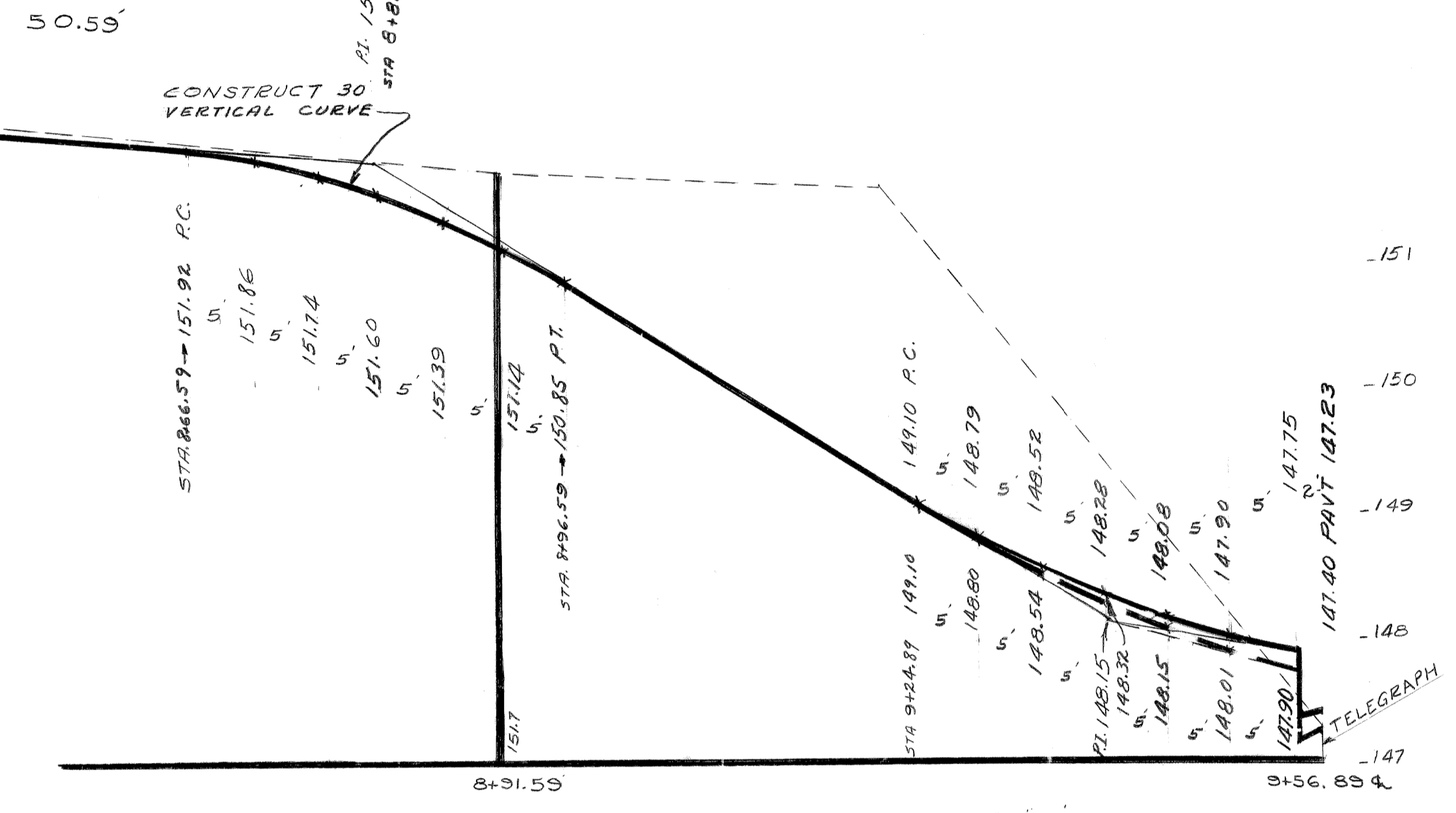


PEMBROKE



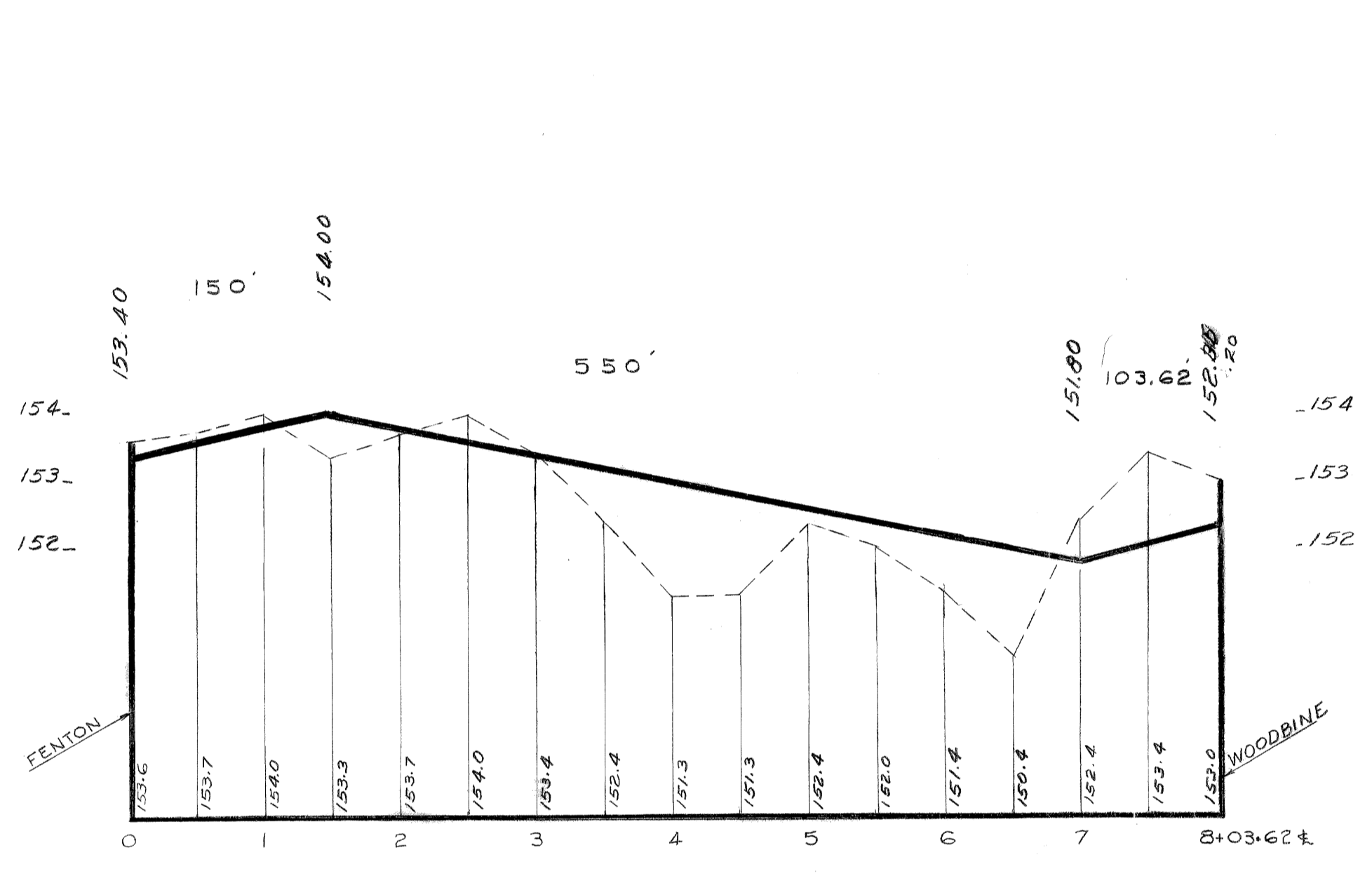
NORFOLK

SEE DETAIL X FOR GRADE BETWEEN STA 8+31.10 TO 9+56.89

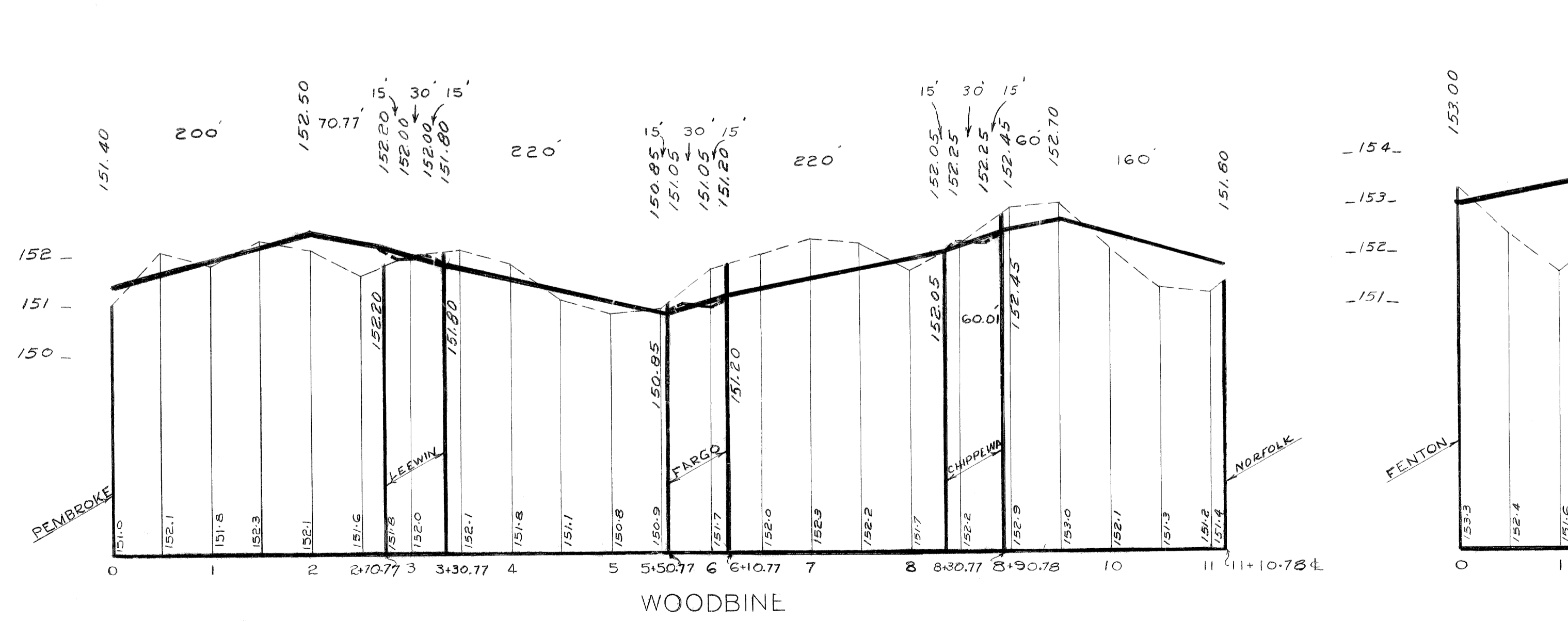


DETAIL X

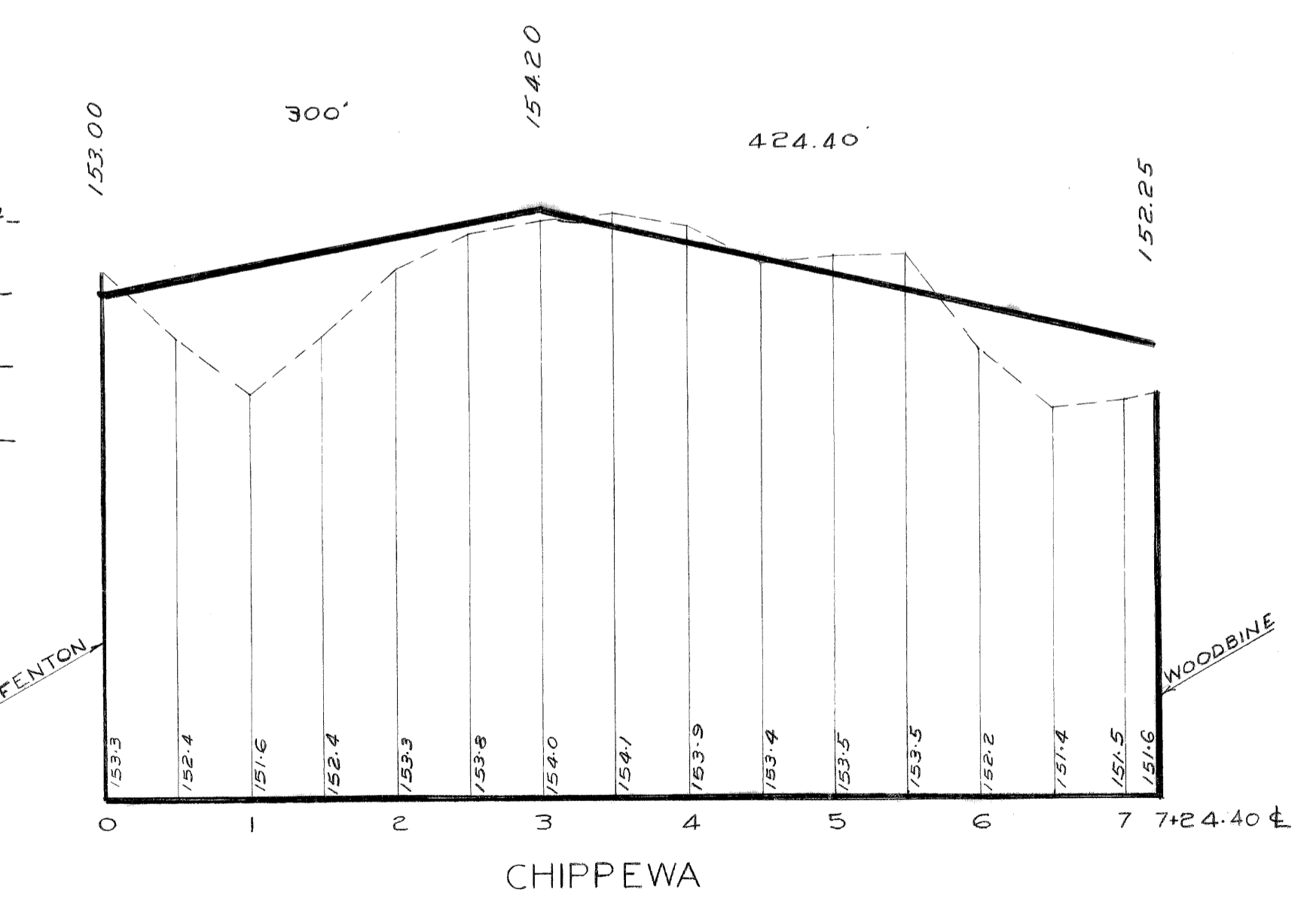
SCALE: HOR. 1"=10'
 VER. 1"=1'



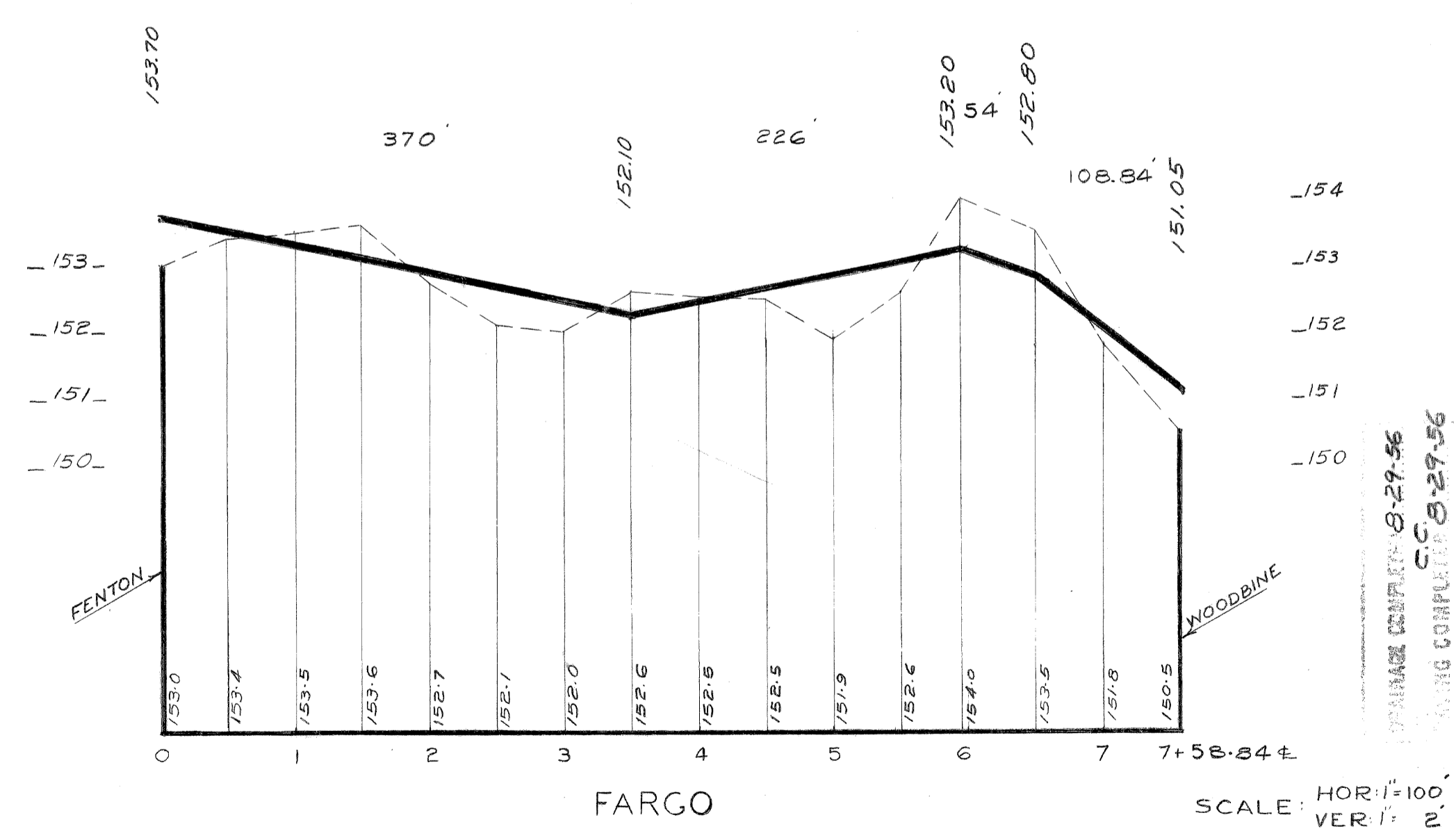
LEEWIN



WOODBINE



CHIPPEWA



FARGO

SCALE: HOR. 1"=10'
 VER. 1"=1'

DESIGNED BY	Naim Kawwas
DRAWN BY	Naim Kawwas
TRACED BY	
CHECKED BY	BEHM

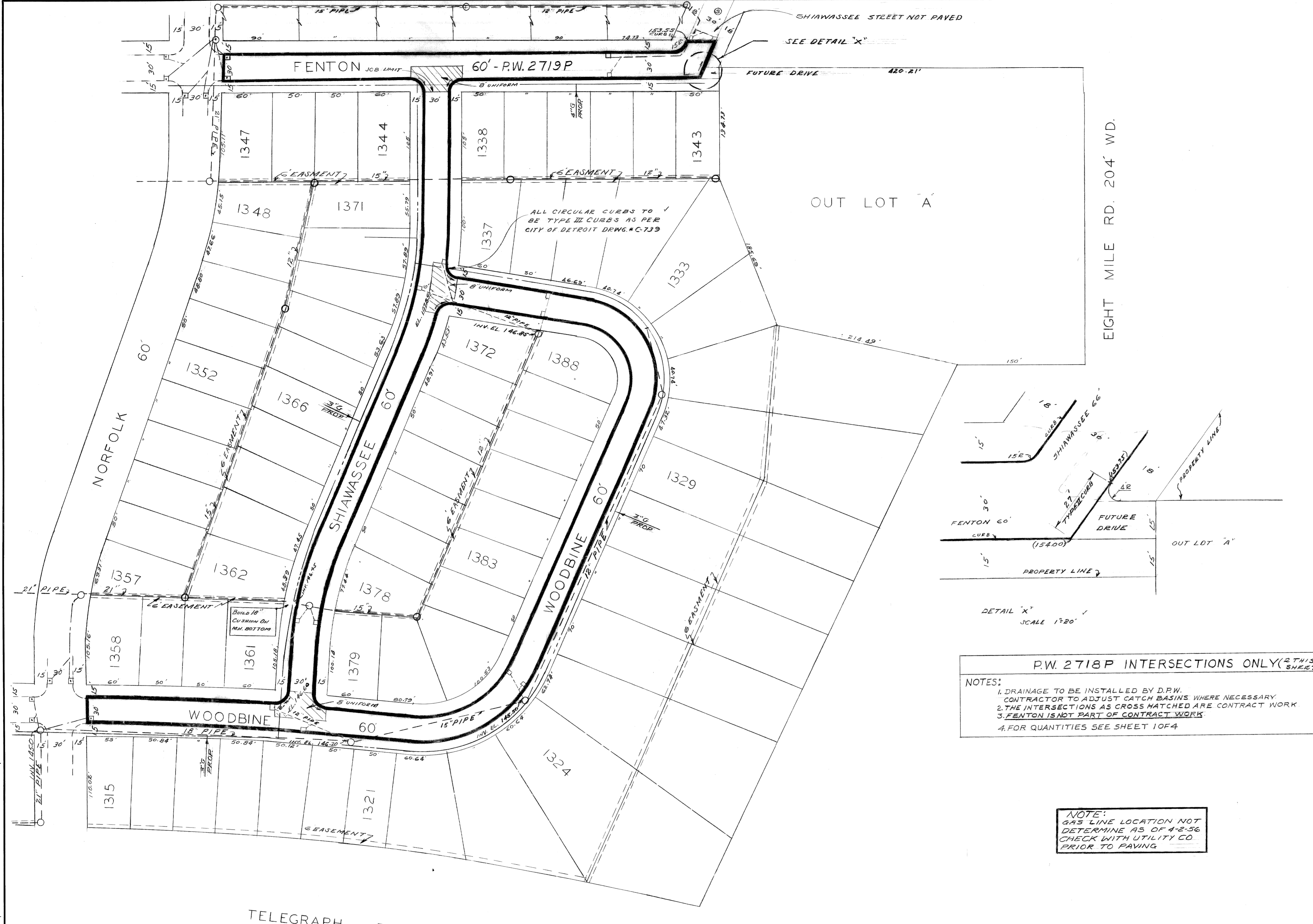
REFERENCE DRAWINGS	
APPROVED:	<i>[Signature]</i>
	<i>[Signature]</i>
	<i>[Signature]</i>

CITY OF DETROIT
 DEPARTMENT OF PUBLIC WORKS
 CITY ENGINEERS OFFICE
 STREET DESIGN

PAVING PLAN
 FOR
 HOLTZMAN AND SILVERMAN
 SUBDIVISION NO 7

SHEET 2 OF 4 SHEETS
CONTRACT NO. PW 2718P
DRWG NO. C-4013
DATE 11-7-55

DRAW - 14

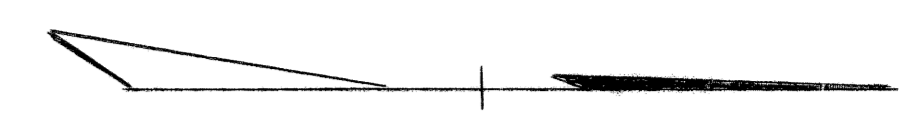


OUT LOT 'A'

EIGHT MILE RD. 204' WD.

TELEGRAPH RD. 204' WD.

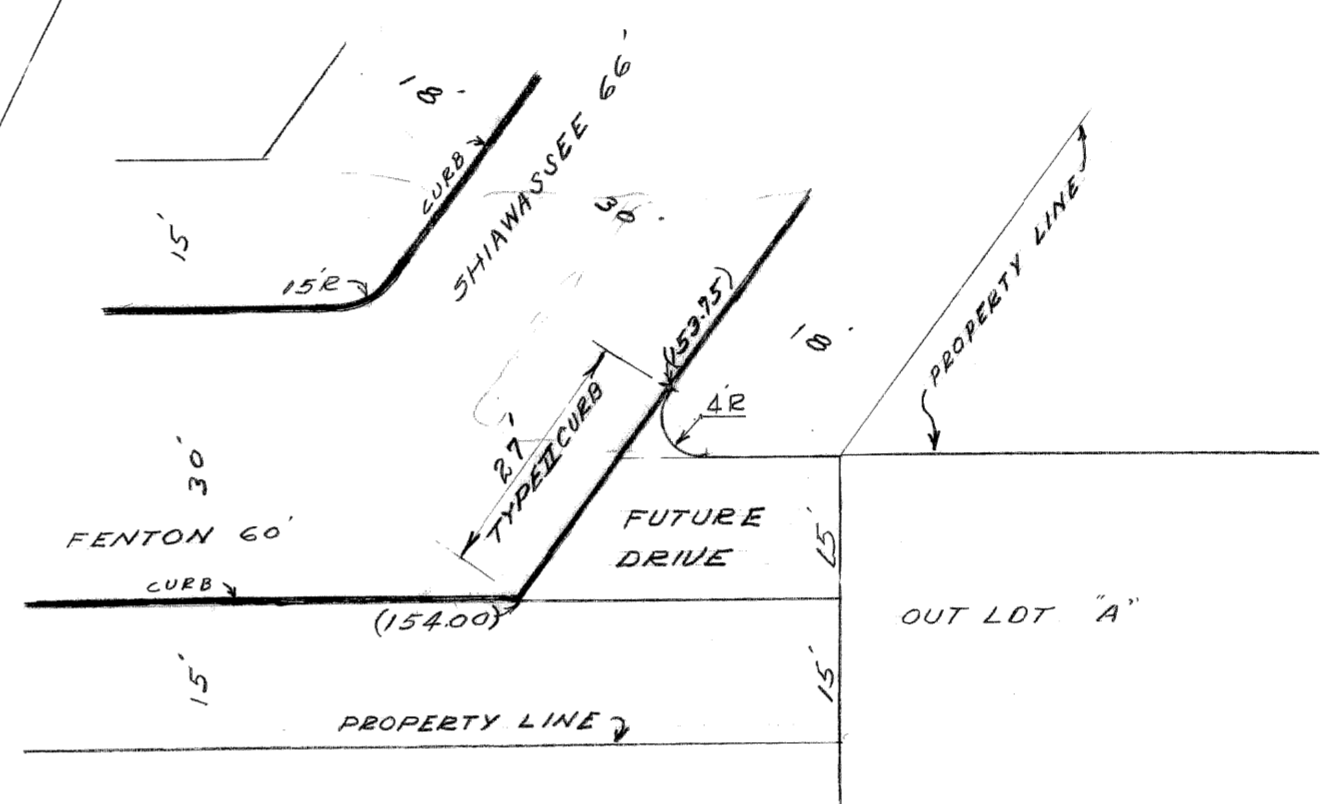
Location of catch basins, manholes & points of connections. *AKJ. 1/15/56*



BENCH MARKS	ELEV.
P.L.B.M.#123-251 N.E. COR. PEMBROKE & FIVE POINTS	156.945 ✓
B.M. TOP OF HYD. S.W. COR. SHIAWASSEE & FENTON	157.31 ✓
B.M. TOP OF MONUMENT S.W. COR. SHIAWASSEE & WOODBINE	157.85 ✓
P.L.B.M.#123-251A N.E. COR. PEMBROKE & GRANDVIEW	156.945 ✓

ALL WORK COVERED BY THESE PLANS INCLUDING DRAINAGE STRUCTURES AND LINES SHALL CONFORM TO THE SPECIFICATIONS AND CURRENT PRACTICE OF THE OFFICE OF THE CITY ENGINEER - DEPARTMENT OF PUBLIC WORKS OF THE CITY OF DETROIT.

ALL WORK SHALL BE DONE UNDER THE INSPECTION OF THE CITY ENGINEER - CITY OF DETROIT. THE CONTRACTOR SHALL OBTAIN ALL PERMITS AND SHALL BEAR THE COST THEREOF AS WELL AS ALL INSPECTION CHARGES.



DETAIL 'X'
SCALE 1"=20'

P.W. 2718P INTERSECTIONS ONLY (2 THIS SHEET)

NOTES:

1. DRAINAGE TO BE INSTALLED BY D.R.W. CONTRACTOR TO ADJUST CATCH BASINS WHERE NECESSARY.
2. THE INTERSECTIONS AS CROSS HATCHED ARE CONTRACT WORK.
3. FENTON IS NOT PART OF CONTRACT WORK.
4. FOR QUANTITIES SEE SHEET 10F4.

NOTE:
GAS LINE LOCATION NOT DETERMINE AS OF 4-2-56 CHECK WITH UTILITY CO. PRIOR TO PAVING

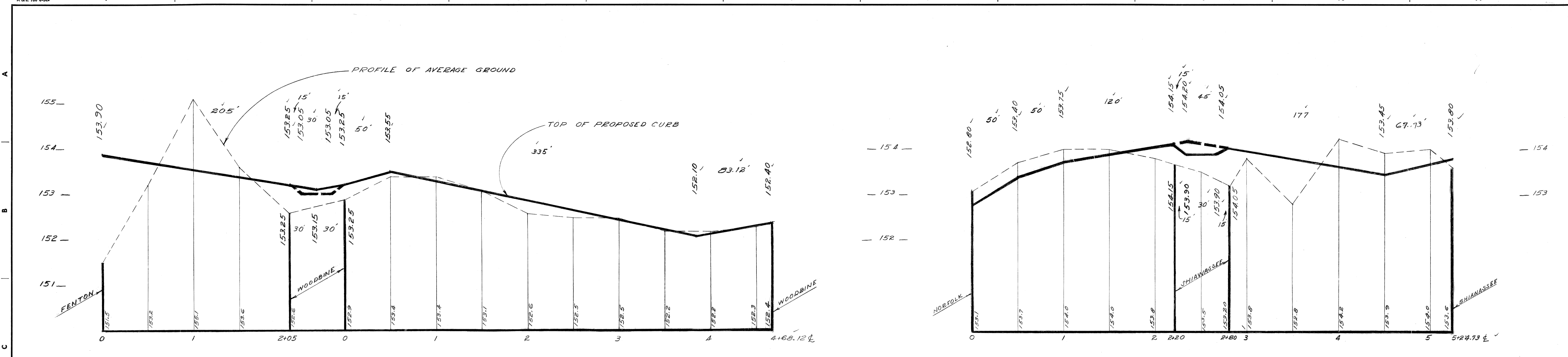
LEGEND

- PROPOSED 18" X 18" CATCH BASINS.
- PROPOSED DRAINAGE LINES.
- PROPOSED MANHOLES
- PROPOSED ON SUBDIVISION NO. 7
- EXISTING CATCH BASIN, SEWER LINE AND MANHOLE
- PROPOSED GAS LINE

D.P.W. 5-23-56 5-28-56
PAVING COMPLETED 8-29-56
C.C.
PAVING COMPLETED 8-29-56

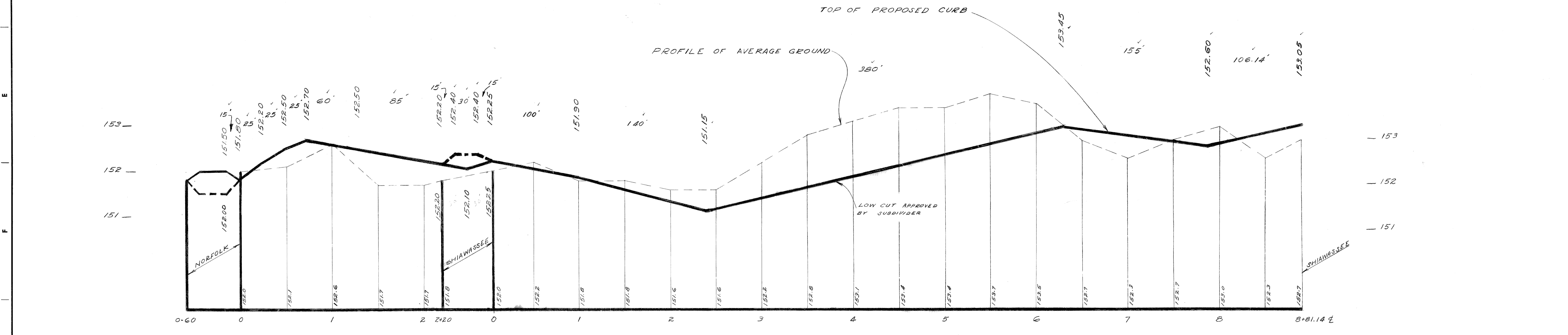
SCALE: 1"=60'

4-3-56 PROPOSED WATER LINES ADDED J.K. COORD. DESCRIPTION DRN. CKD. APVD. DATE REVISIONS LOCATED BY COORDINATES ON SHEET	DESIGNED BY	<i>Naim Kawwas</i>	APPROVED:	<i>Behm</i>	CITY OF DETROIT DEPARTMENT OF PUBLIC WORKS CITY ENGINEERS OFFICE STREET DESIGN	PAVING PLAN FOR HOLTZMAN AND SILVERMAN SUBDIVISION NO 8	SHEET 3 OF 4 SHEETS
	DRAWN BY	<i>Naim Kawwas</i>	<i>Clyde F. Palmer</i>				CONTRACT No. PW 2718P
	TRACED BY		<i>W. H. Kozlowski</i>				DRWG No. C-4042
	CHECKED BY	<i>BEHM</i>	CITY ENGINEER				DATE 12-24-56



SHIAWASSEE (F. BOOK 1846 PG. 8)

FENTON (F. BOOK 5758 PG. 15)
(TO BE A CITY CONTRACT JOB)



WOODBINE (F. BOOK 1846 PG. 9)

MANAGE COMPLETE 8-29-56
DRAWING COMPLETE 8-29-56

SCALE: HOR. 1"=50'
VER. 1"=1'

DESIGNED BY <i>Naim Kawwas</i>		APPROVED: <i>Behm</i>		CITY OF DETROIT DEPARTMENT OF PUBLIC WORKS CITY ENGINEERS OFFICE STREET DESIGN	PAVING PLAN FOR HOLTZMAN AND SILVERMAN SUBDIVISION NO 8		SHEET 4 OF 4 SHEETS	
DRAWN BY <i>Naim Kawwas</i>		<i>Casper L. Palmer</i> CITY ENGINEER					CONTRACT NO. FW 2718P	
TRACED BY							DRWG NO. C-4042	
CHECKED BY <i>BEHM</i>							DATE 12-31-56	