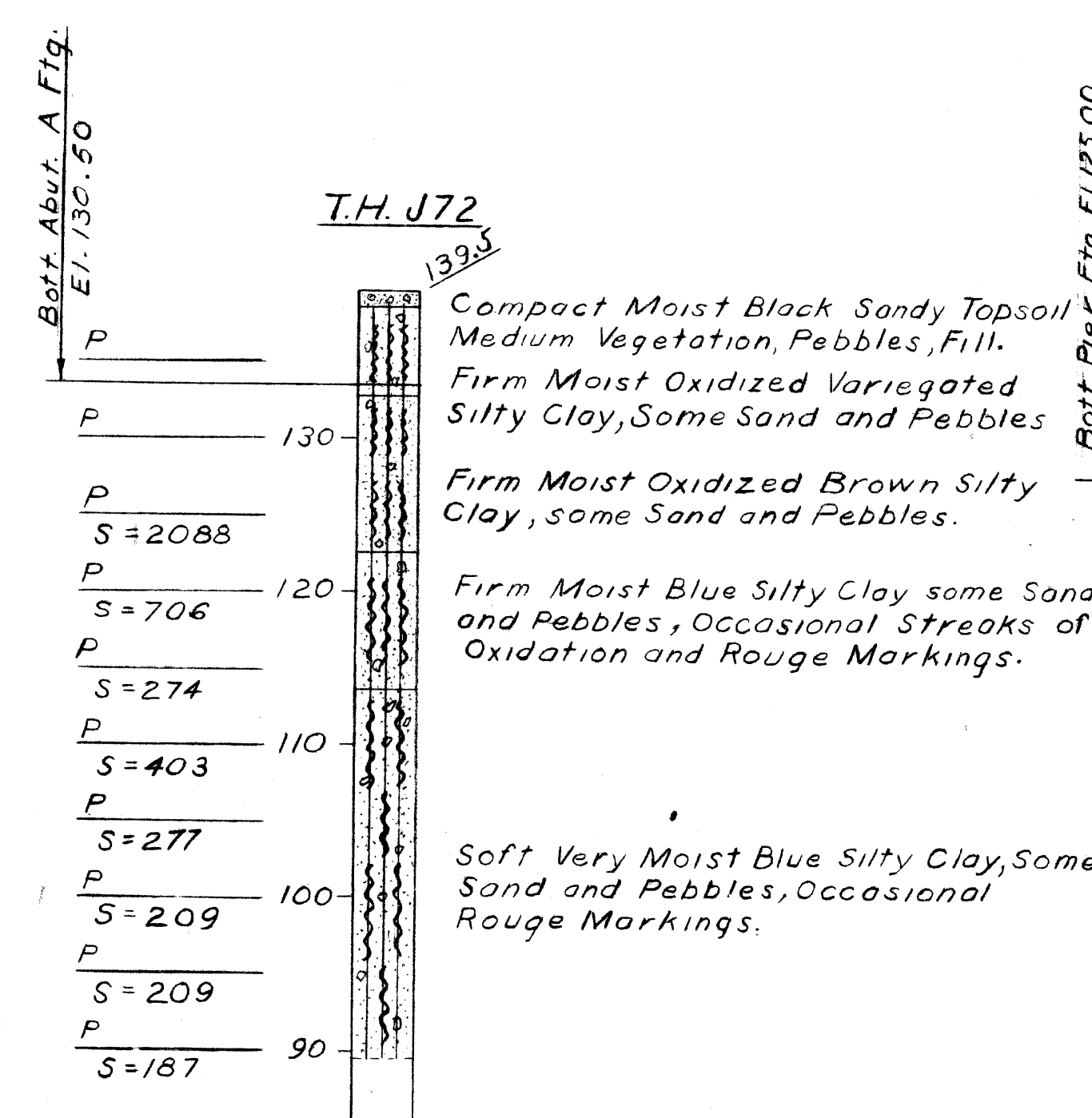


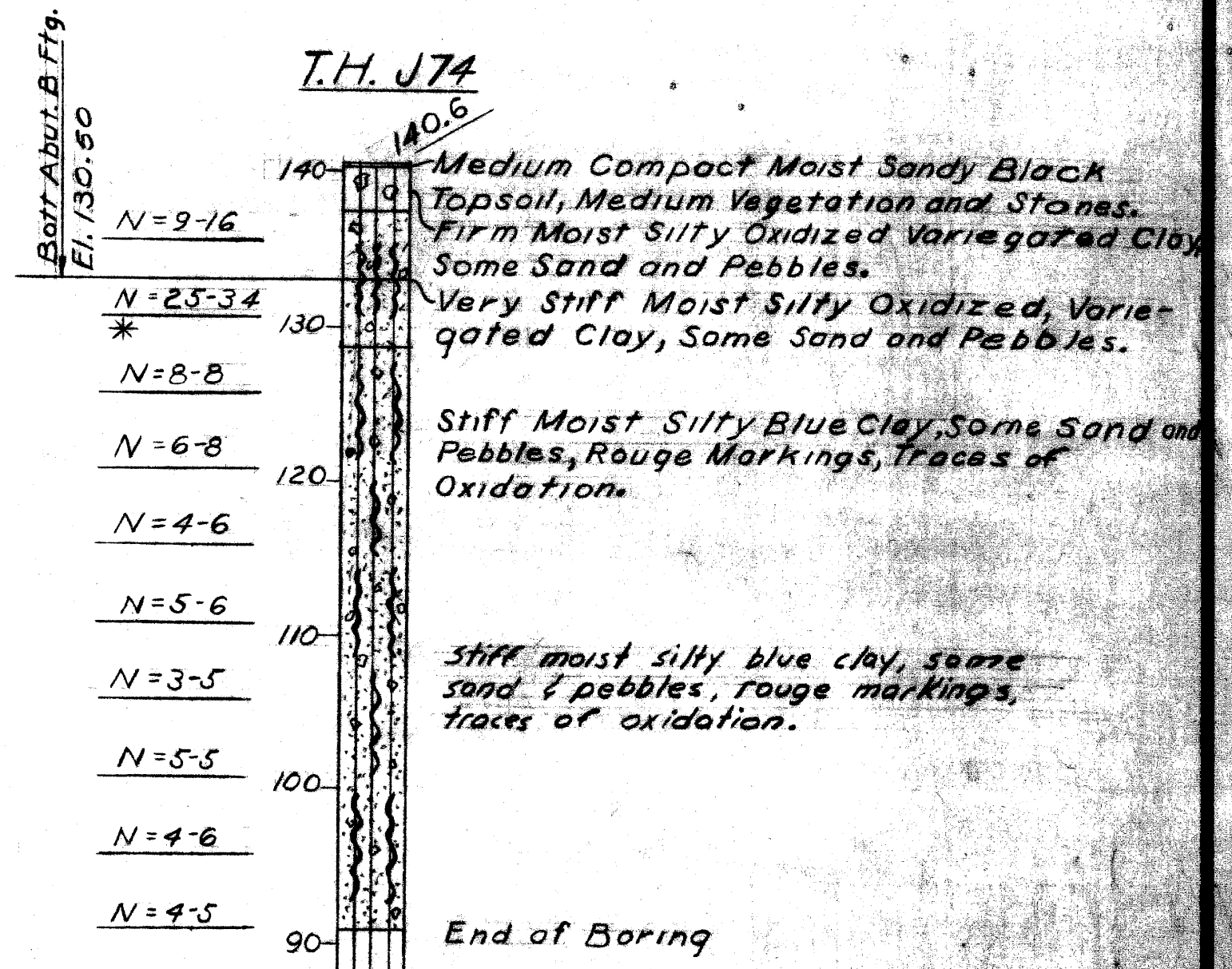
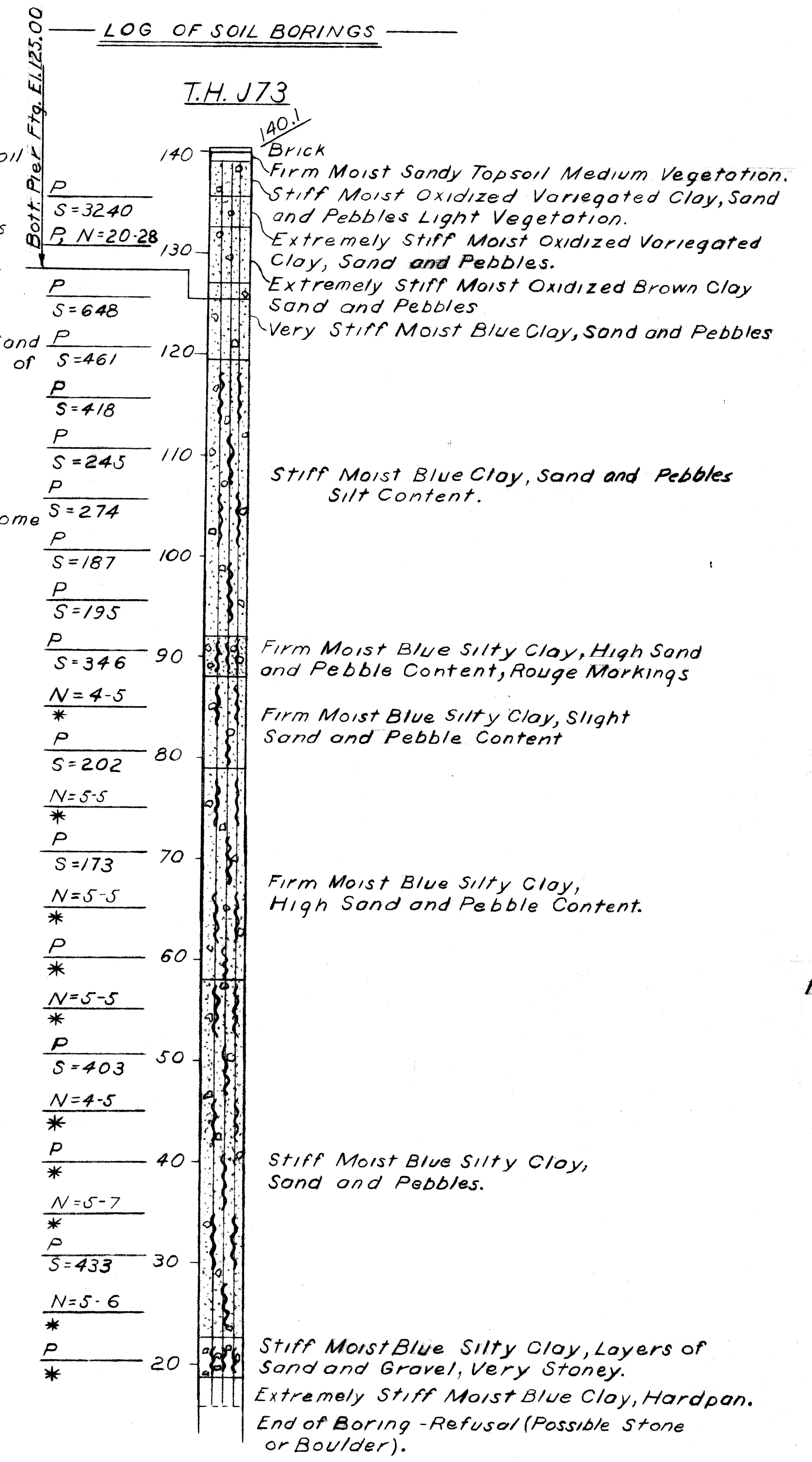
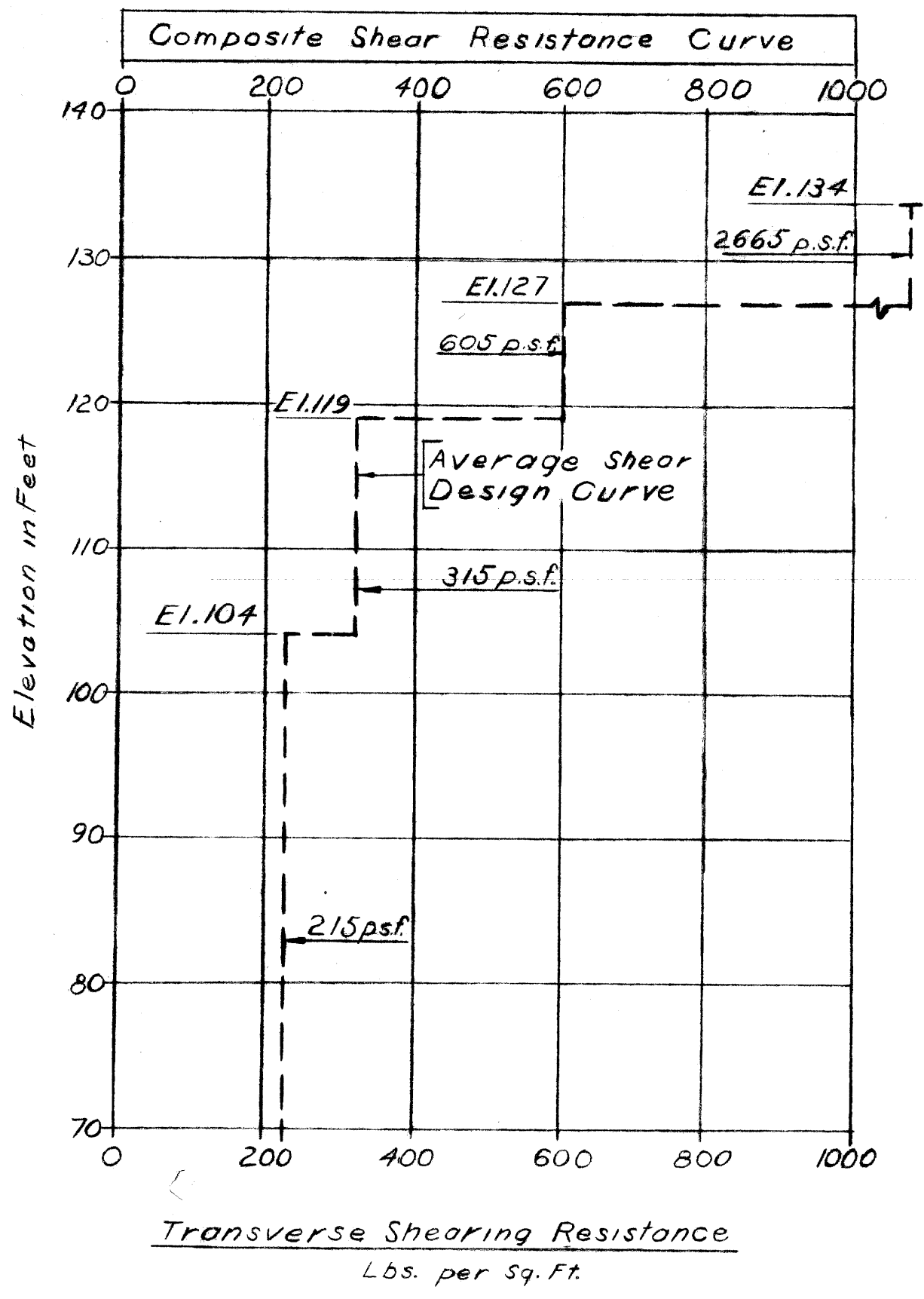
SURVEY PLAN
Scale 1"=40'

UTILITY LEGEND

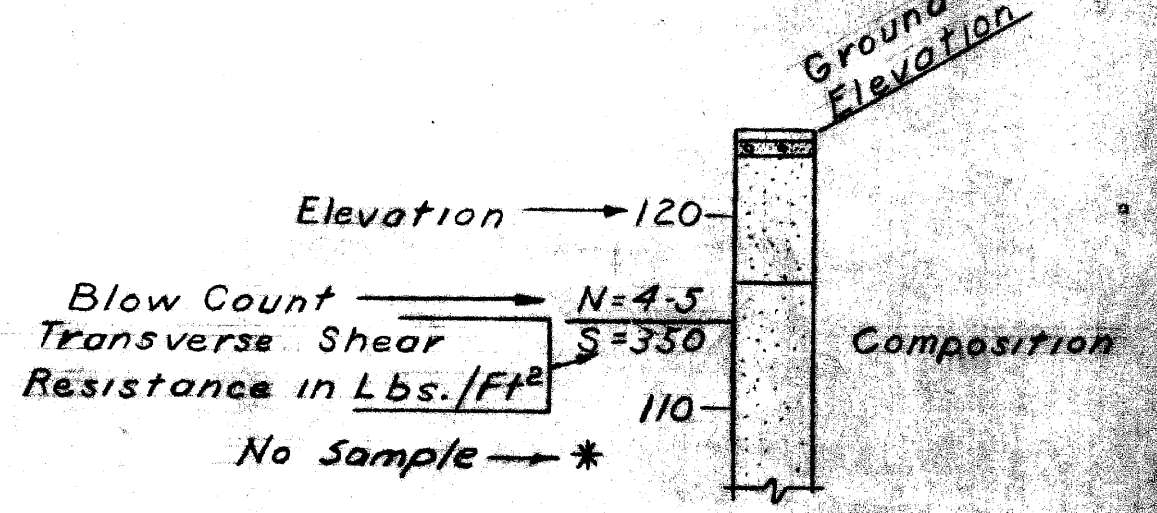
- Sewer Inlet or Catchbasin
- Sewer Manhole
- R.L.C. Manhole
- M.B.T. Manhole
- D.E. Manhole
- Water Gate Well and Valve
- Fire Hydrant
- Detroit Edison Co. Pole
- Test Hole For Soil Profile
- D.F.D. Alarm Box
- Tree (Size)
- Fence



No Noticeable Ground Water



LEGEND



NOTES:
Blow Count - Indicates number of blows required to drive a sampler 6" (unless otherwise noted) using a 140# hammer falling 30".
P - Indicates sampler was pushed.
S - Indicates Transverse Shear Resistance in lbs./sq. ft. as determined by M.S.T.D. Standard Test.

GENERAL NOTES:
The work covered by these plans includes construction of the proposed bridge and placing slope protection to the limits shown. All other work is included in the Road Plans which are part of this contract.
Removal of fences and buildings is not part of this contract.
The contractor shall locate all active underground utilities prior to starting work, and shall conduct his operation in such a manner as to insure that those utilities not requiring relocation will not be disturbed.
Topography shown hereon represents conditions existing at the time the field survey was made. However, these conditions may have been materially altered by the operations of others before the work has been started.
Unsuitable material under Abutments A & B shall be removed and backfilled with Granular Material Class III compacted to 100% of its maximum unit weight.

PLANS PREPARED BY
CITY OF DETROIT
DEPARTMENT OF PUBLIC WORKS
CITY ENGINEERS OFFICE
BUREAU OF HIGHWAYS AND EXPRESSWAYS

APPROVED: *H. Cant*
STRUCTURAL ENGINEER

JOB No.
PW 990(3)

NO.	DESCRIPTION	DATE	BY

MICHIGAN DEPARTMENT OF STATE HIGHWAYS

**ROOSEVELT AVE. PEDESTRIAN BRIDGE
CROSSING THE JEFFRIES FREEWAY IN DETROIT**

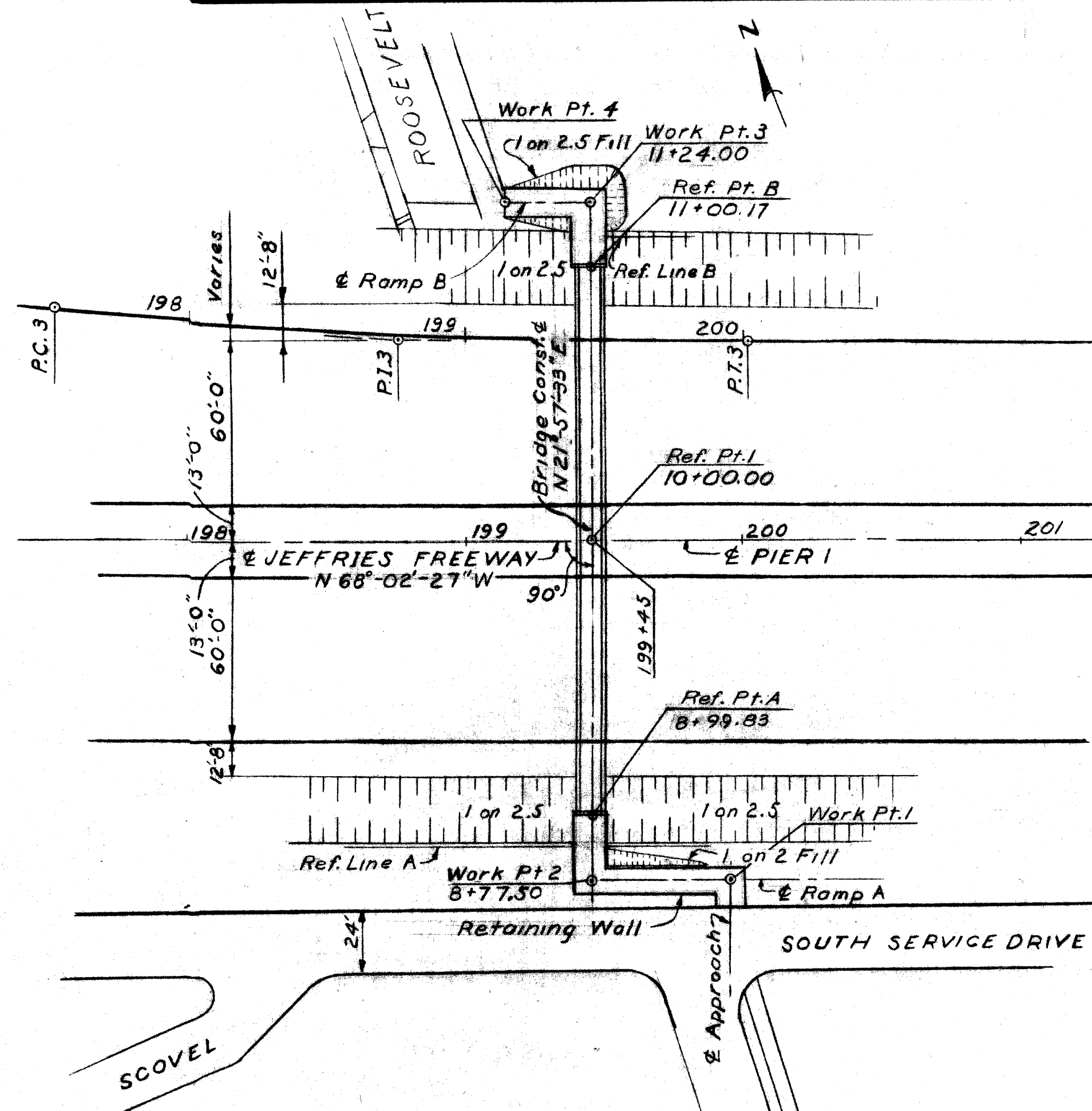
GENERAL PLAN OF SITE

APPROVED: _____
DESIGN SUPERVISING ENGINEER

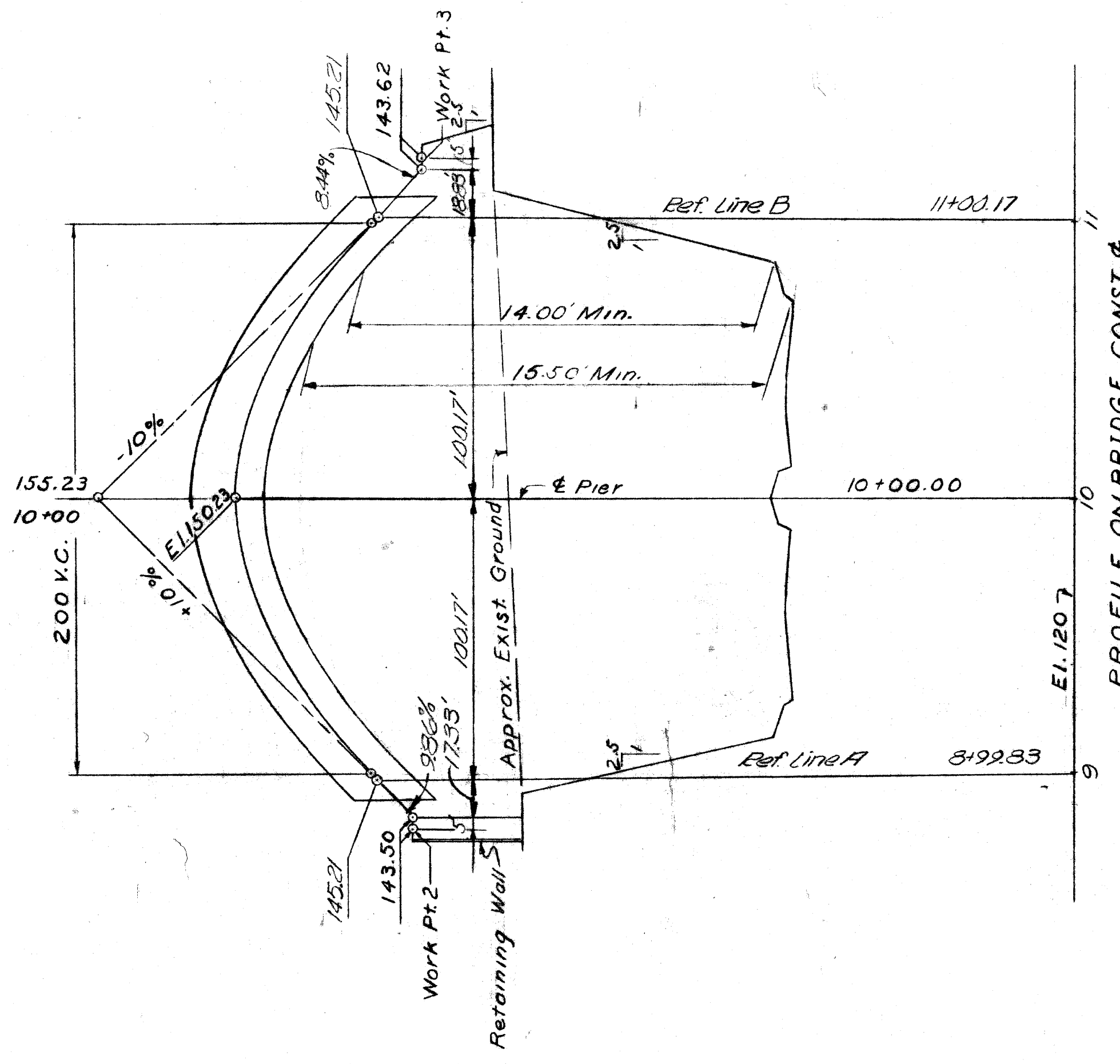
APPROVED: _____
DESIGN ENGINEER

DESIGNED BY	DATE	BY
TRACED BY		
CHECKED BY		
SHEET 2 of 16		

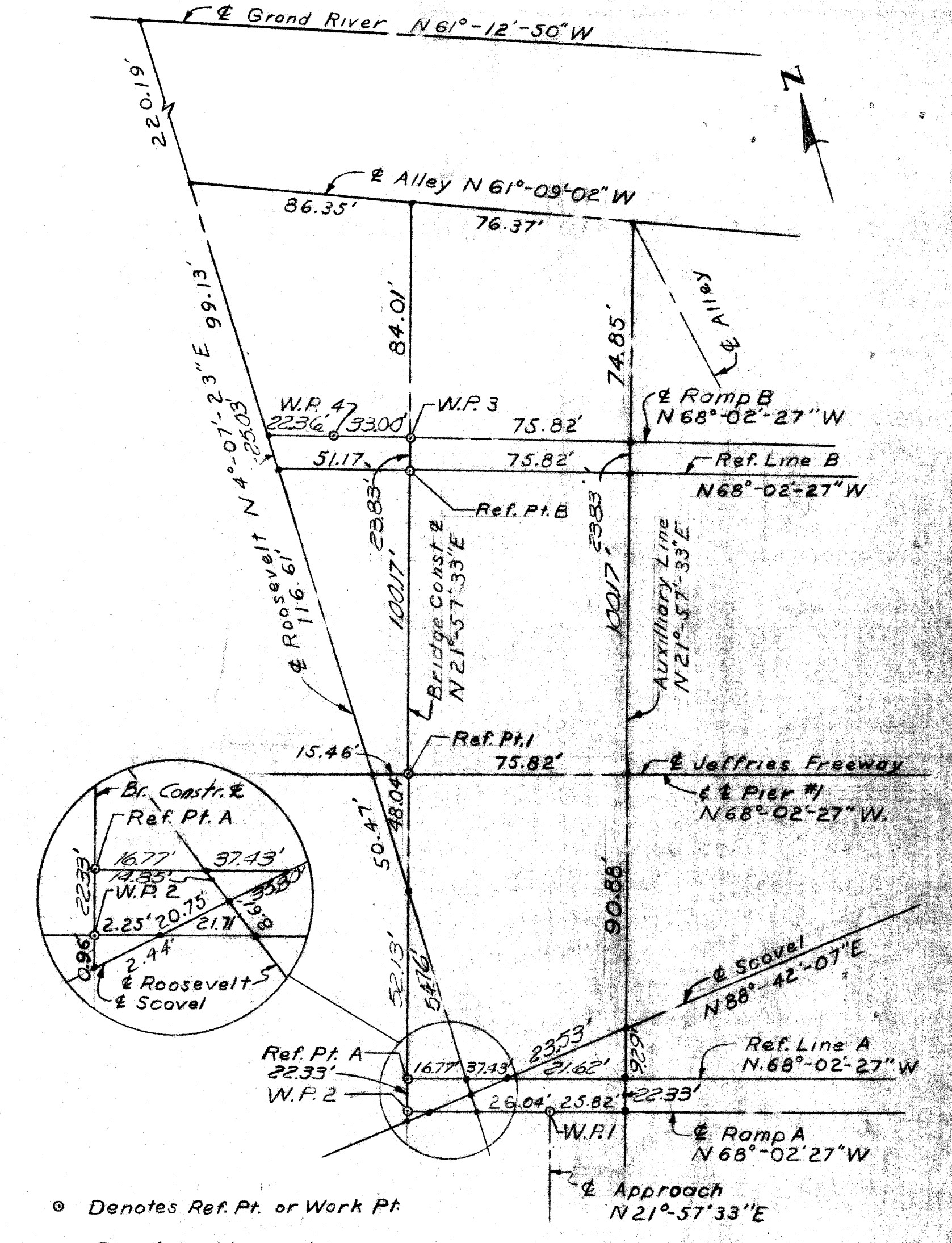
P06 of 82123J



PLAN
Scale 1"=40'



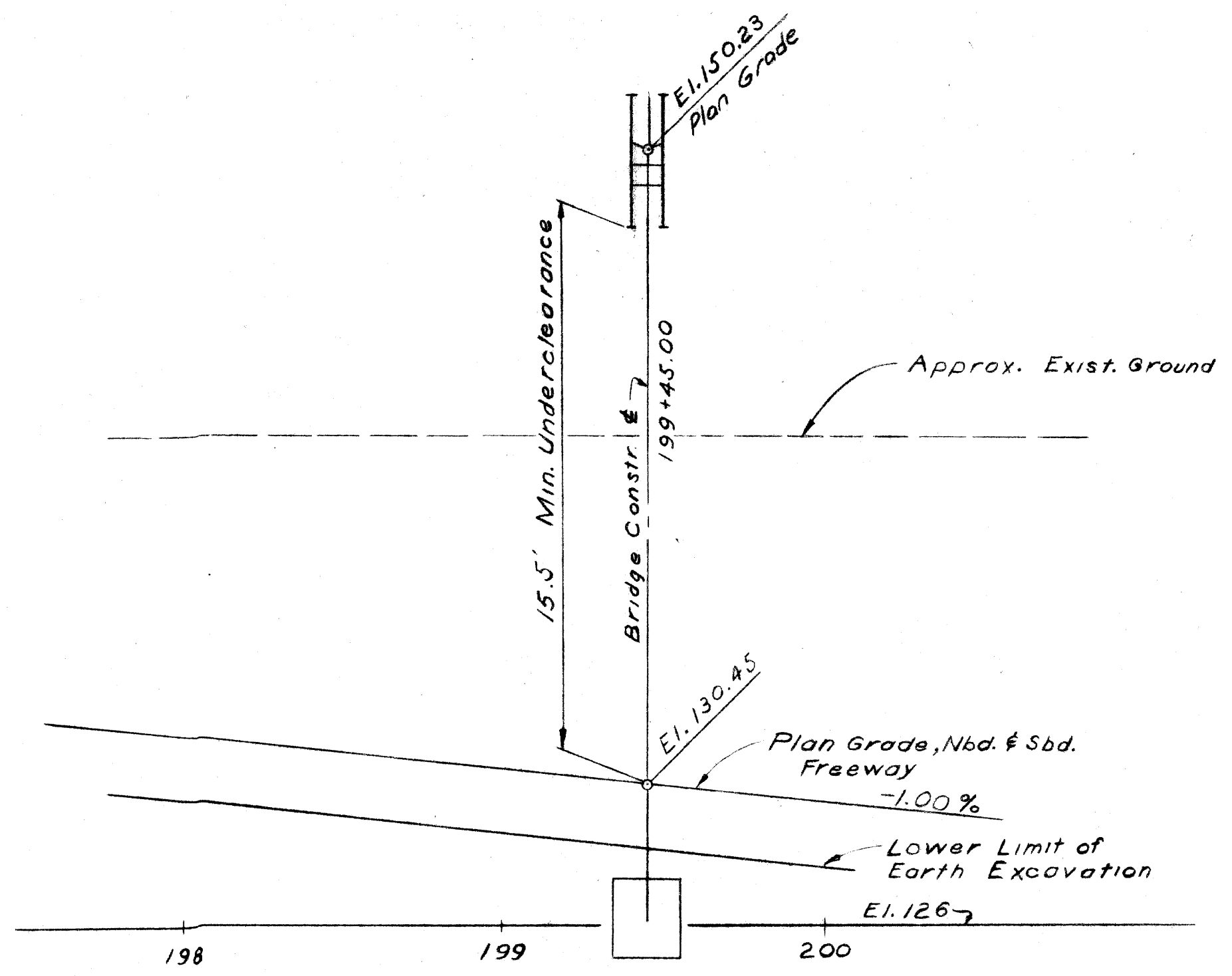
PROFILE ON BRIDGE CONST.
1"=40' Hor
1"=4' Vert



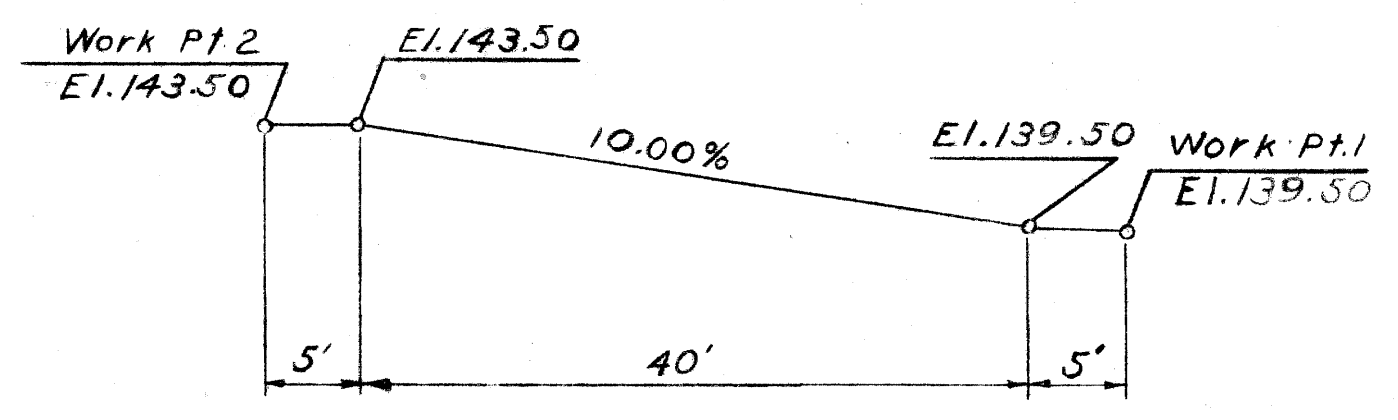
ALIGNMENT DIAGRAM
No Scale

- Denotes Ref. Pt. or Work Pt.
- Denotes intersection

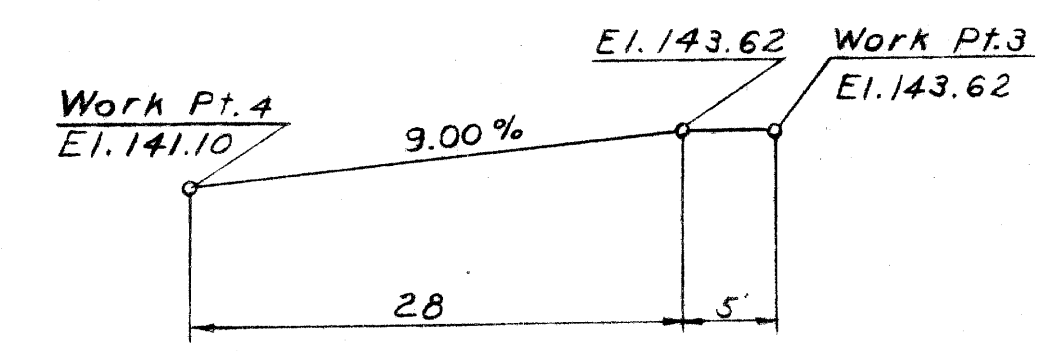
Construction Bench Marks:
 C.B.M. 70 El. 141.18 Arrow on Hydrant N.E. Corner Eastern and Roosevelt.
 C.B.M. 71 El. 144.94 Arrow on Hydrant N.W. Corner Roosevelt and Grand River.
 C.B.M. 72 El. 143.21 Arrow on Hydrant N.W. Corner Scovel and Taft.
 Elevations refer to City of Detroit Datum, 479.755 feet above sea level.



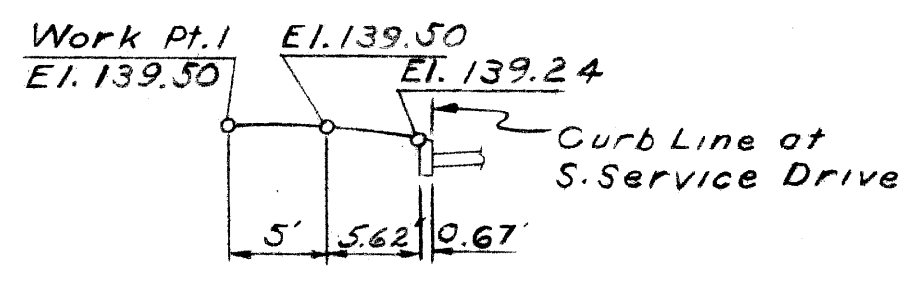
PROFILE ON JEFFRIES FREEWAY
Scale 1"=40' Hor,
1"=4' Vert.



PROFILE ON RAMP A
Not to Scale



PROFILE ON RAMP B
Not to Scale



PROFILE ON APPROACH A
Not to Scale

Note:
For Approach B Details
See Road Plans

PLANS PREPARED BY
 CITY OF DETROIT
 DEPARTMENT OF PUBLIC WORKS
 CITY ENGINEERS OFFICE
 BUREAU OF HIGHWAYS AND EXPRESSWAYS

APPROVED: *J. Corud*
 STRUCTURAL ENGINEER

JOB No.
 PW 990(3)

NO.	DESCRIPTION	DATE	BY

MICHIGAN STATE HIGHWAY DEPARTMENT

Roosevelt Ave. Pedestrian Bridge
 Crossing the Jeffries Freeway in Detroit

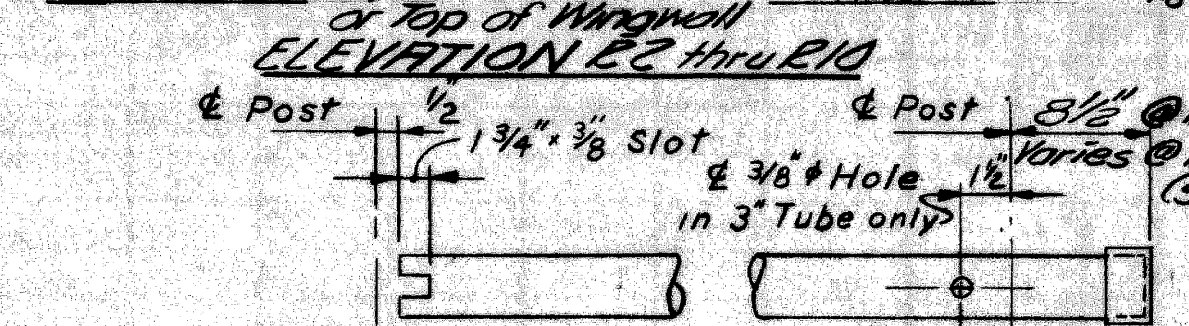
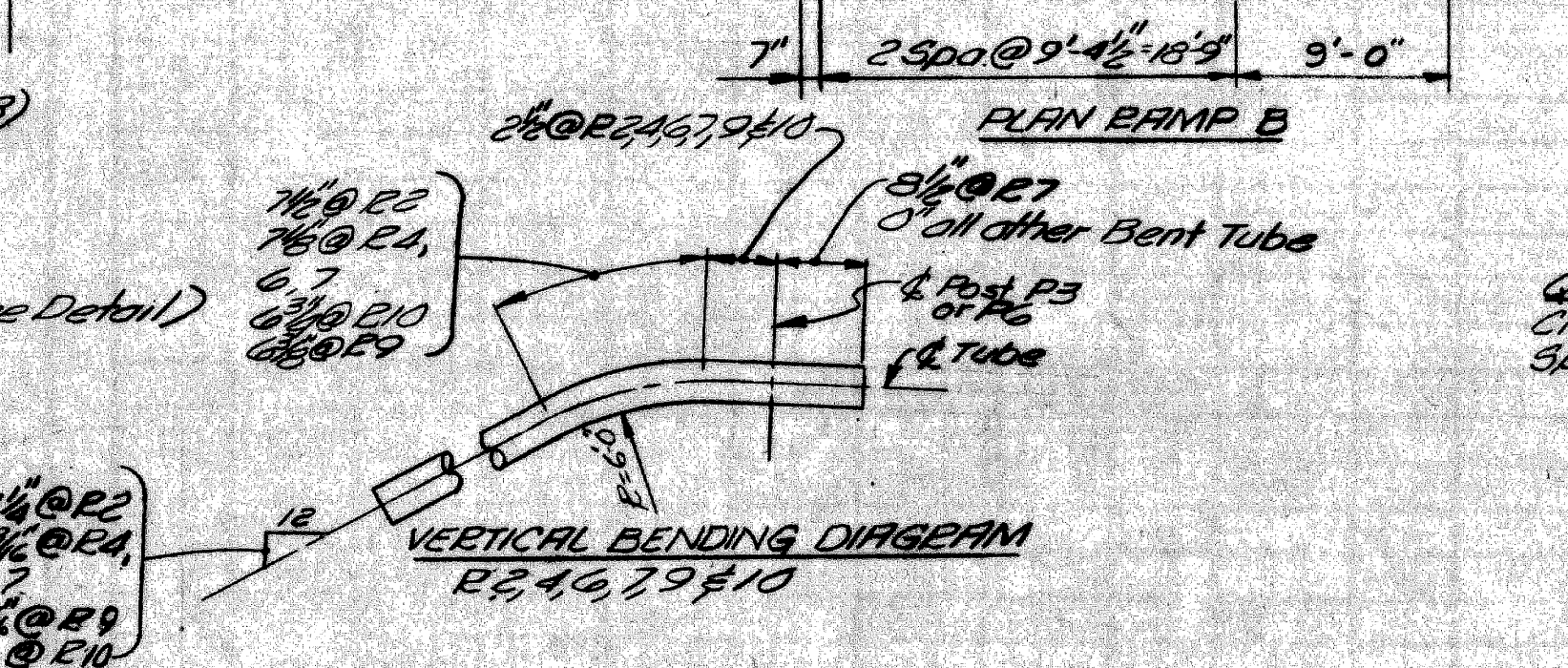
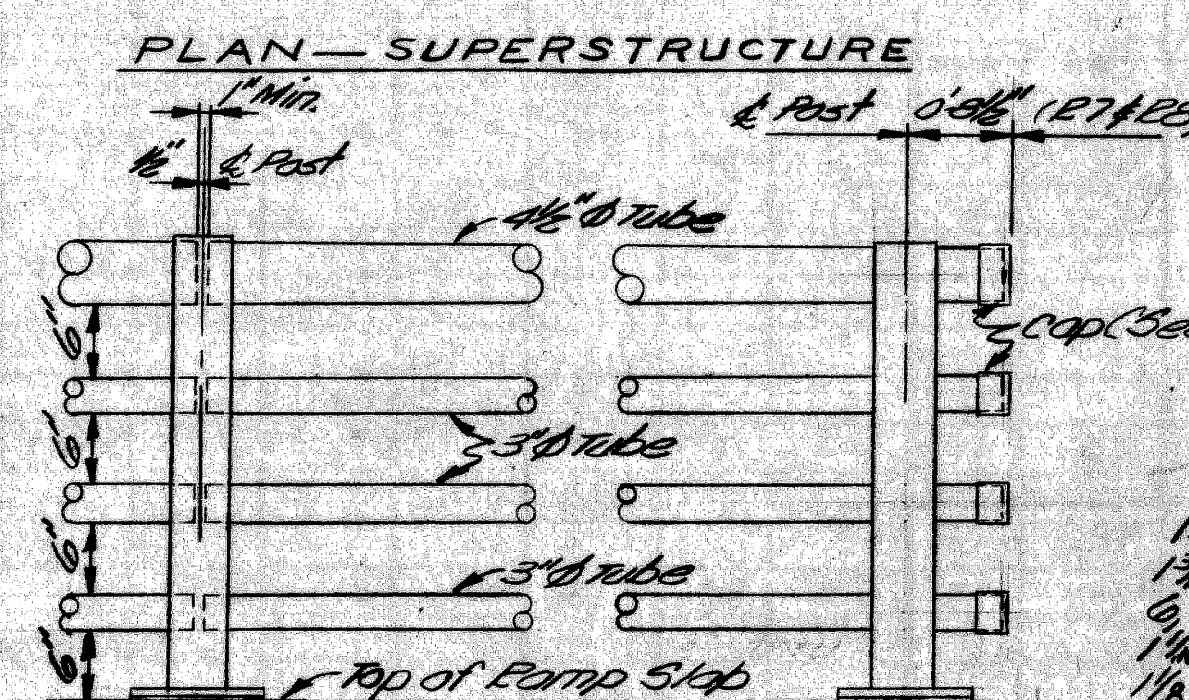
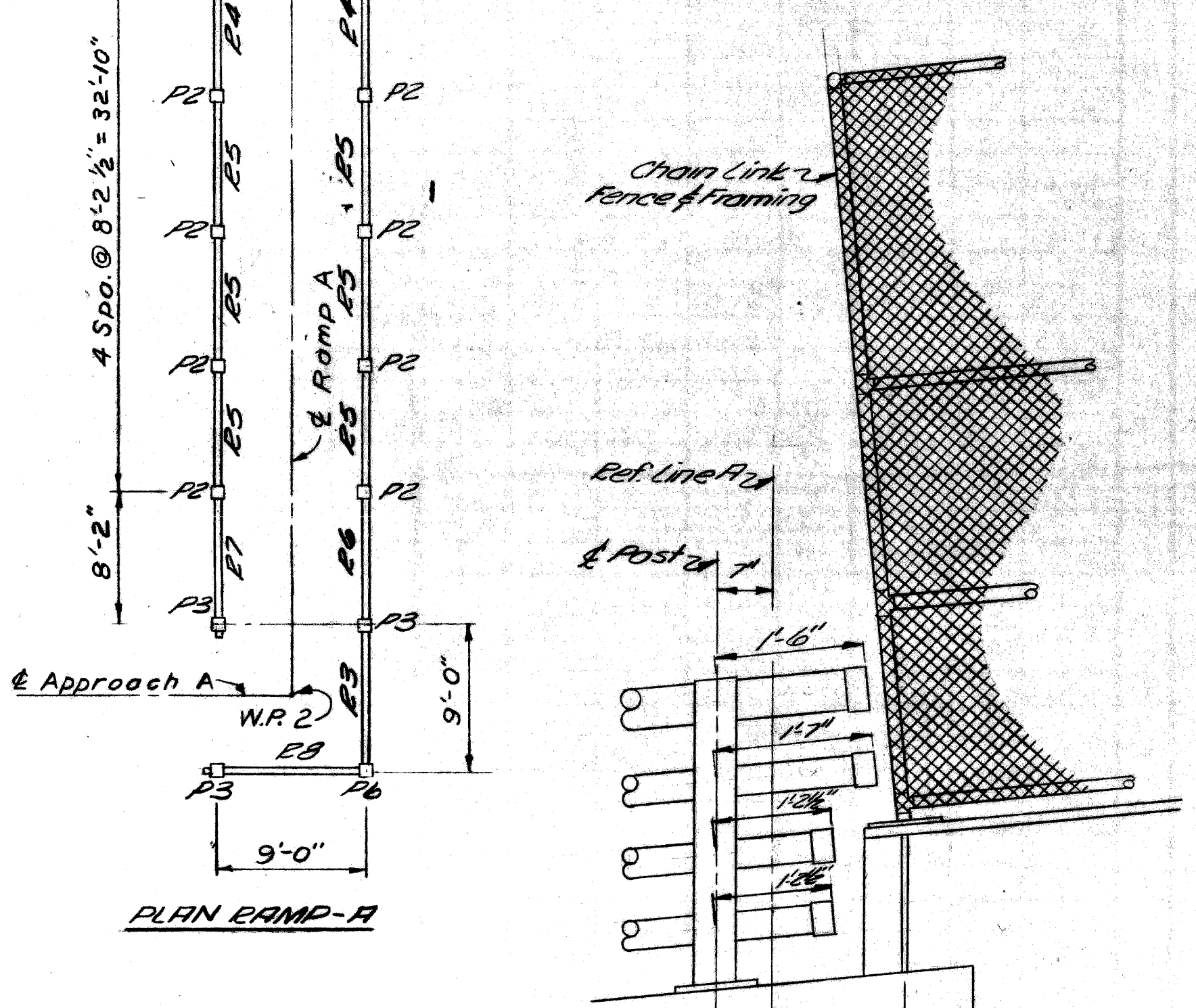
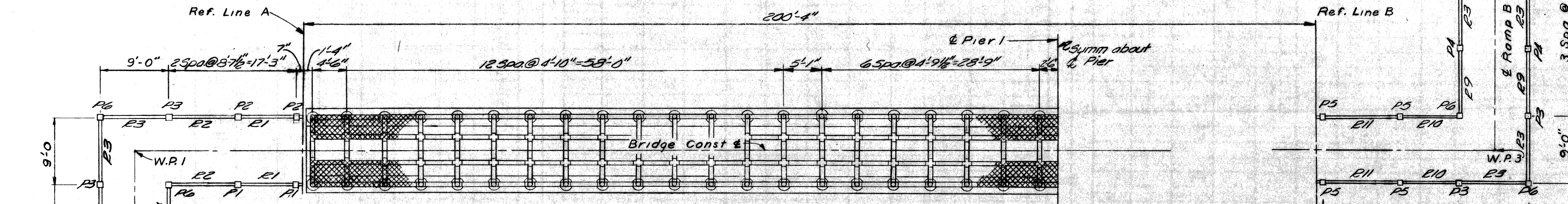
GENERAL DRAWING

APPROVED: _____
 DESIGN SUPERVISING ENGINEER

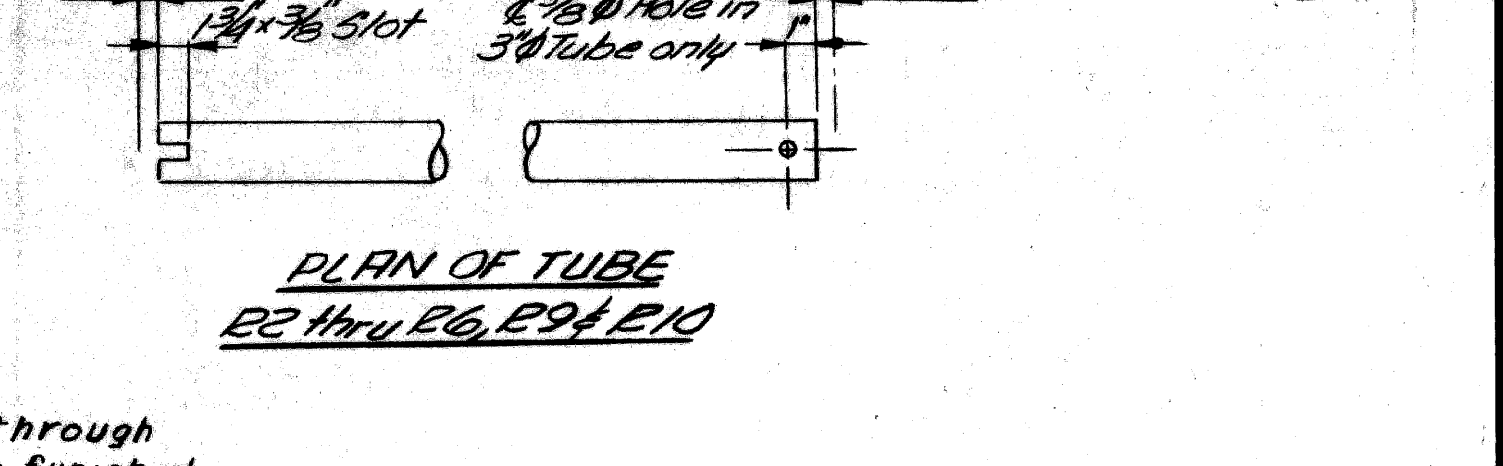
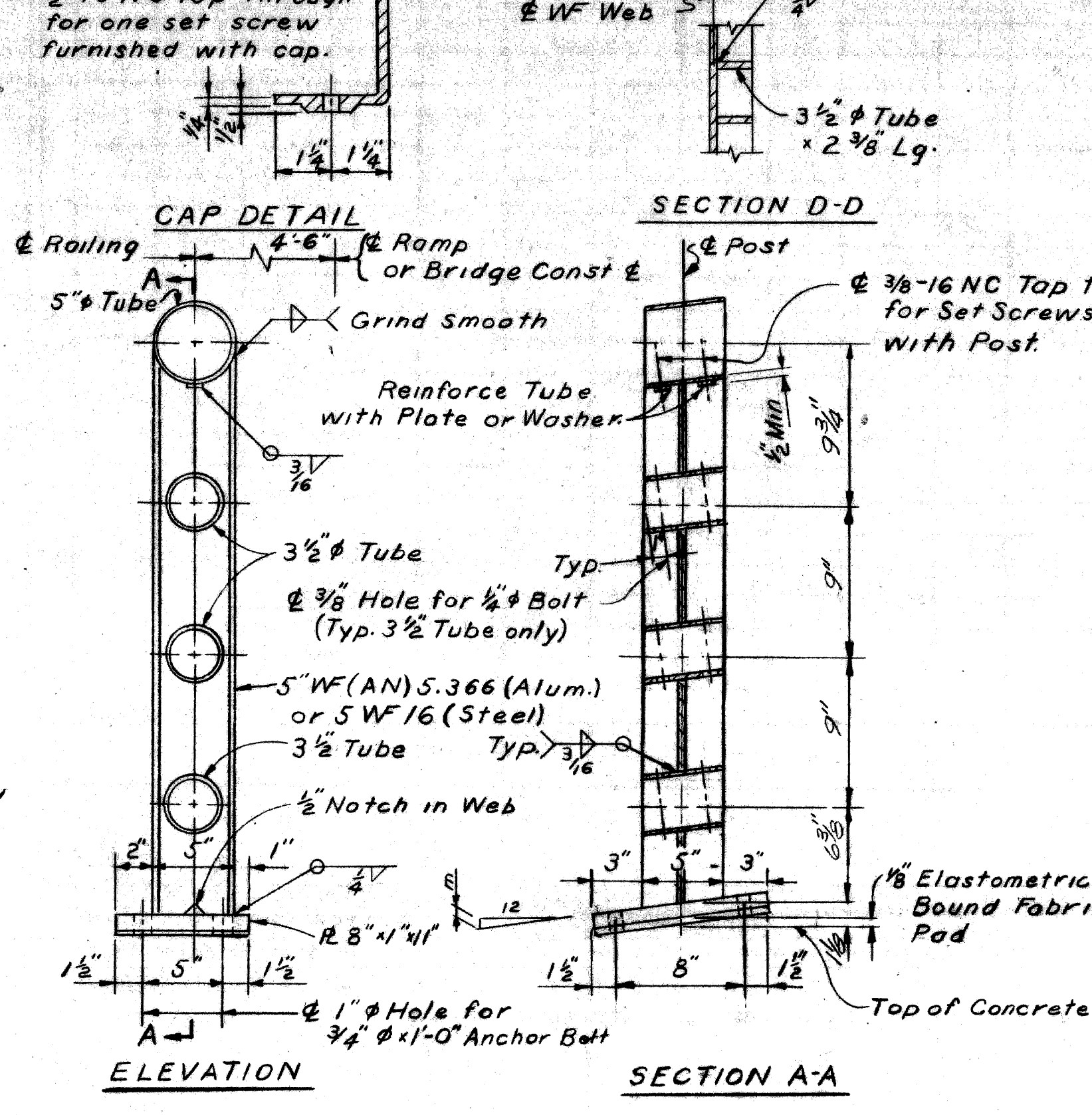
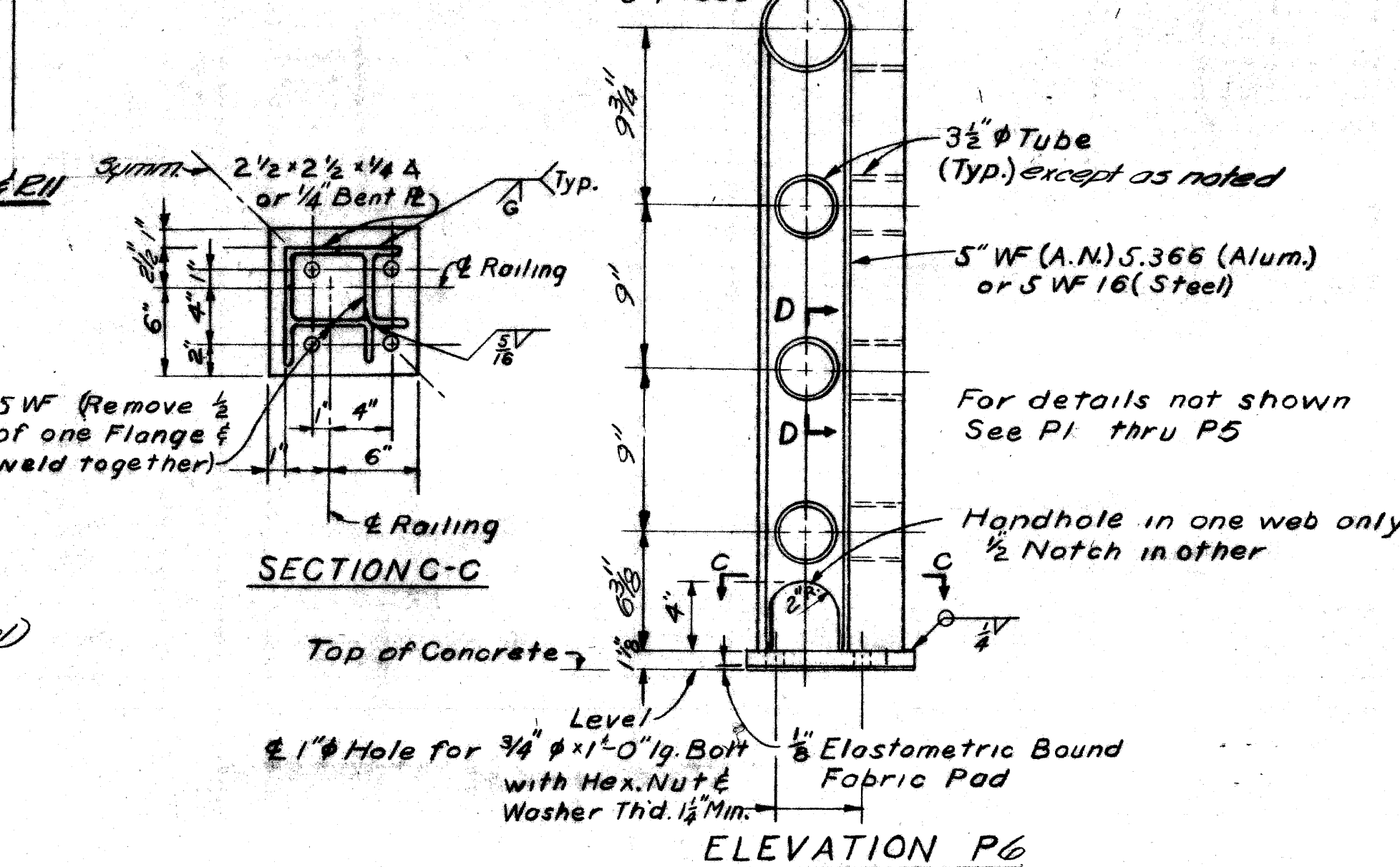
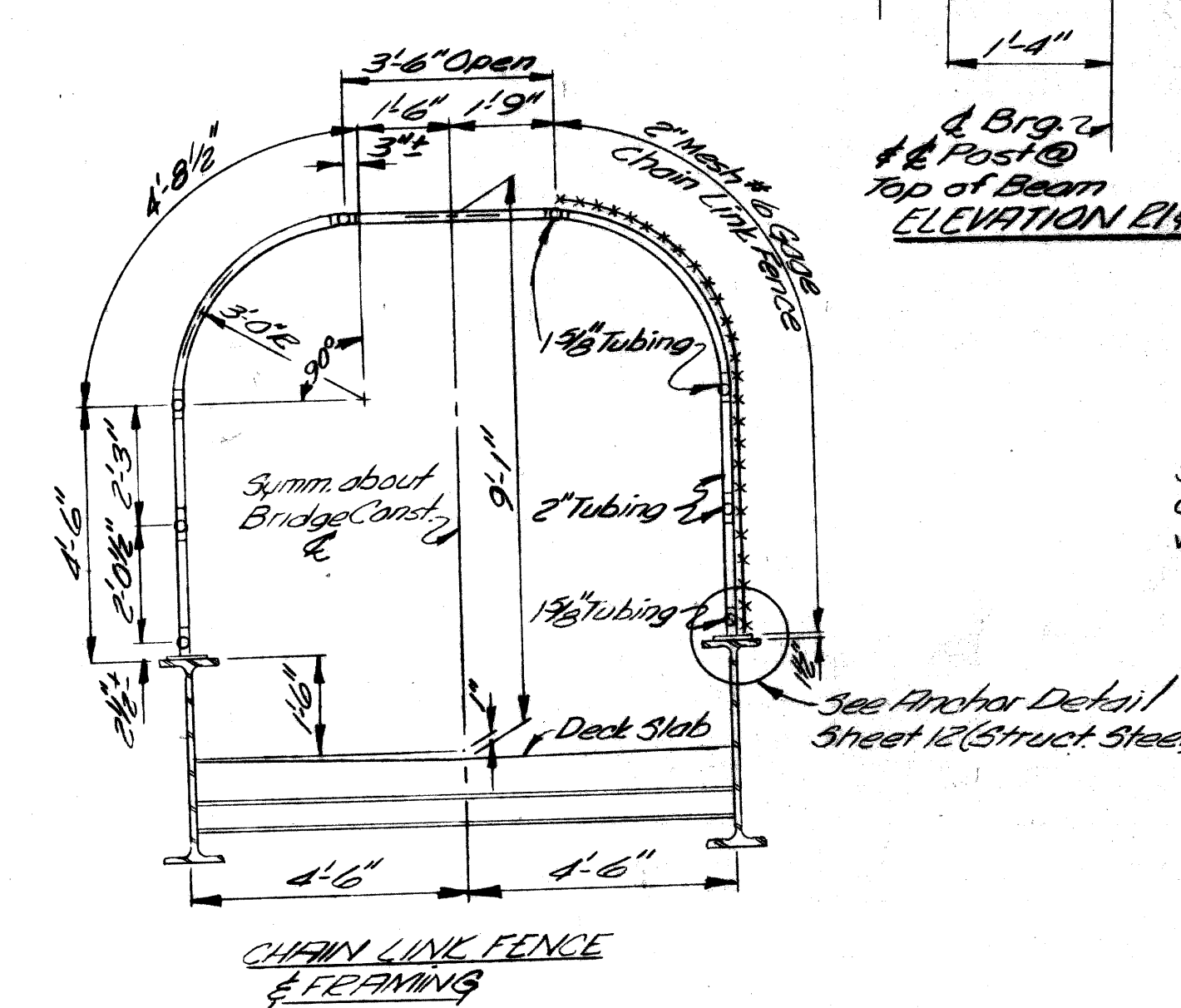
APPROVED: _____
 DESIGN ENGINEER

SQUAD BOSS	CV	2-68
DRAWN BY	SPARSHOV	2-68
CHECKED BY	T.A.B.	4-68
SHEET	3	of 16

PO6 of 82123J



Post Mark	1	2	3	4	5	6
M	1 3/8	3/8	0	1 1/2	1 1/8	0



NOTES
 Enclosure Posts are to be normal to the deck slab.
 Ramp Railing maybe either aluminum alloy 6061-T6 (ASTM B 235) or steel galvanized in accordance with ASTM A123.
 Chain Link Fence shall be No. 6 gage, 2" Mesh and shall conform to the M.D.S.H. Standard Specifications, Sect 7-22.03. The Fence material is to be adequately fastened to all tubing in the frame.
 Nominal 2" Tubing shall be 2" outside diam. steel pipe or tubing weighing 2.72 lbs. per ft., galvanized.
 Nominal 1 1/2" Tubing shall be 1 1/2" outside diam. steel pipe or tubing weighing 2.27 lbs per ft., galvanized.
 All tubing shall be furnished with suitable connections and its min. weight shall be within 5% of the weight specified.
 All components are to be galvanized. (Anchor Bolts, Nuts & Washers galvanized in accordance with ASTM designation A153). Galvanizing on Ramp Railing shall be done after fabrication.
 Anchor Bolts, Nuts & Washers are to be ASTM A307 steel.
 Ramp Railing Tube diam. are O.D. and wall thickness shall be 3/16" for all Tubes.
 All distances shown on Plan are horizontal distances.
 Ray length is measured out to out of metal.

QUANTITIES
 Chain Link Fence & Framing 19780 L.F.
 Special Bridge Railing Fabrication & Erection 4 Tube 277 L.F.

PLANS PREPARED BY
 CITY OF DETROIT
 DEPARTMENT OF PUBLIC WORKS
 CITY ENGINEER'S OFFICE
 BUREAU OF HIGHWAYS AND EXPRESSWAYS
 APPROVED: [Signature] STRUCTURAL ENGINEER
 JOB No. PW 990(3)

MICHIGAN DEPARTMENT OF STATE HIGHWAYS
 ROOSEVELT AVE. PEDESTRIAN BRIDGE
 CROSSING THE JEFFRIES FREEWAY IN DETROIT

RAILING DETAILS

CITY OF DETROIT
 DRAWN BY: Locher 2-62
 TRACED BY: D.S.V.C.H.
 CHECKED BY: WAL 2-69
 SHEET 15 OF 16
 P06 OF 821231

NO.	DESCRIPTION	DATE	BY