

Note: Build Ramp Structure and Retaining Walls to horizontal curve as shown.

**RAMP REMOVAL**

**REMOVAL & ALTERATION - EXISTING STRUCTURE**

Removal, Existing Structure Shown [Cross-hatched symbol]  
 Alterations, Existing Structure Shown [Grid symbol]  
 Note: F.S. denotes Far Side  
 N.S. denotes Near Side

COPY  
 EXISTING BRIDGE DETAILS  
 (REVISED FOR CONSTRUCTION)  
 CONTRACT 82023-013

**MISCELLANEOUS QUANTITY**

Removing Portions of Existing Structures Lump Sum

PLANS PREPARED BY  
 CITY OF DETROIT  
 DIVISION OF PUBLIC WORKS  
 BUREAU OF HIGHWAYS AND EXPRESSWAYS  
 APPROVED: [Signature] STRUCTURAL ENGINEER  
 JOB NO. PW 990(16)

**MICHIGAN STATE HIGHWAY DEPARTMENT**

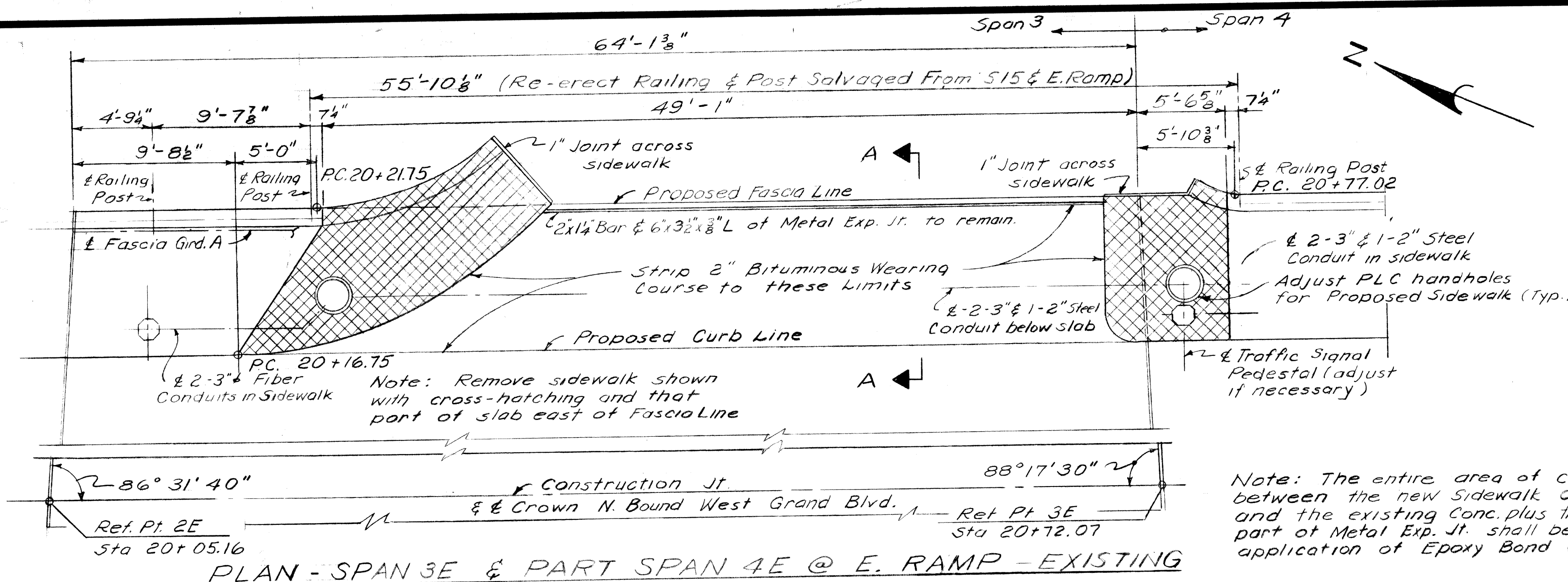
JEFFRIES FREEWAY  
 REVISIONS TO WEST GRAND BLVD. BRIDGE  
 CROSSING THE FORD FREEWAY IN DETROIT

**REMOVAL PLAN**

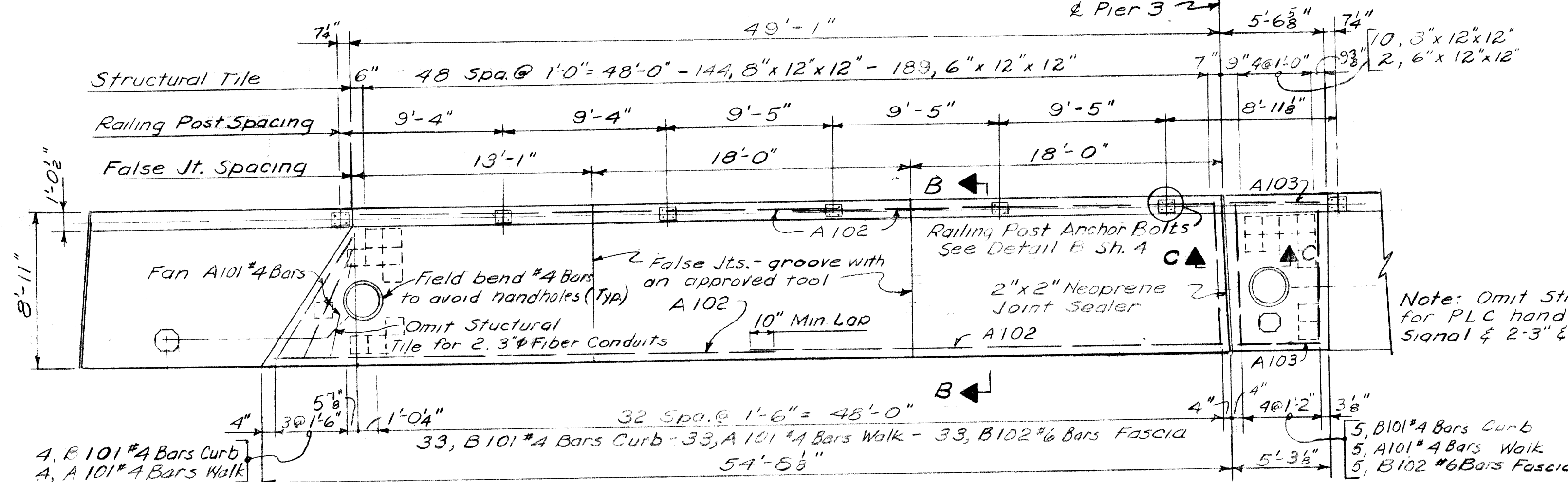
NO.	DESCRIPTION	DATE	BY

SHEET 2 OF 17  
**S13** of 82023 A

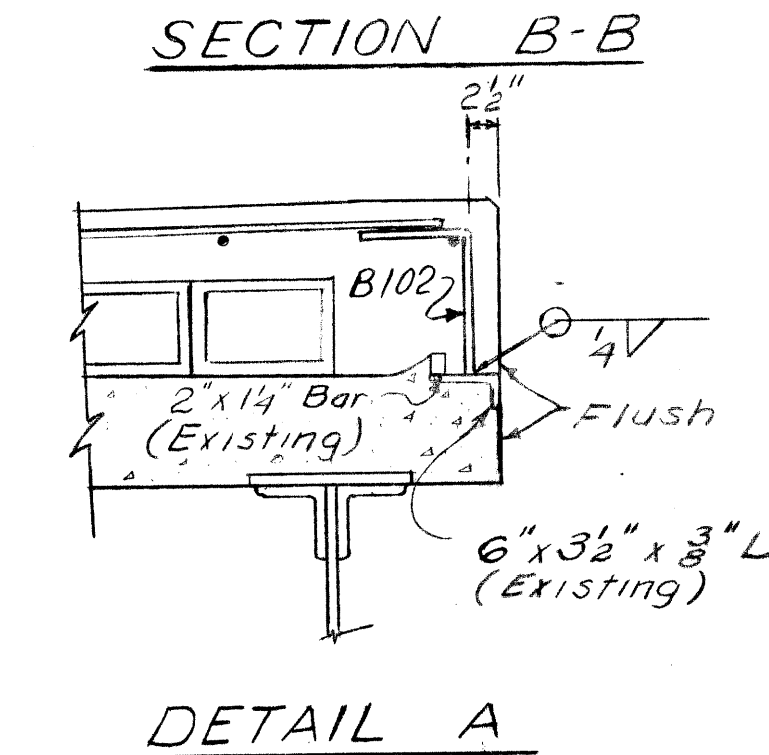
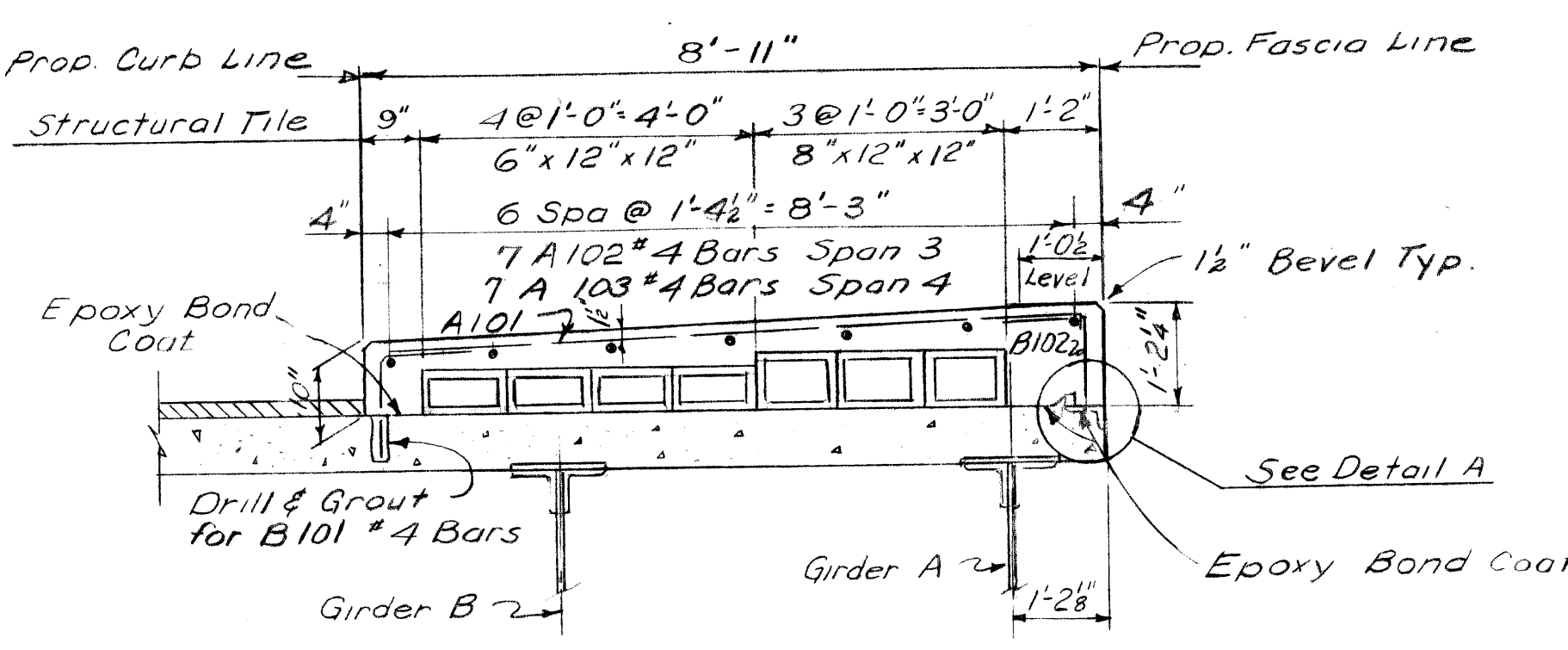
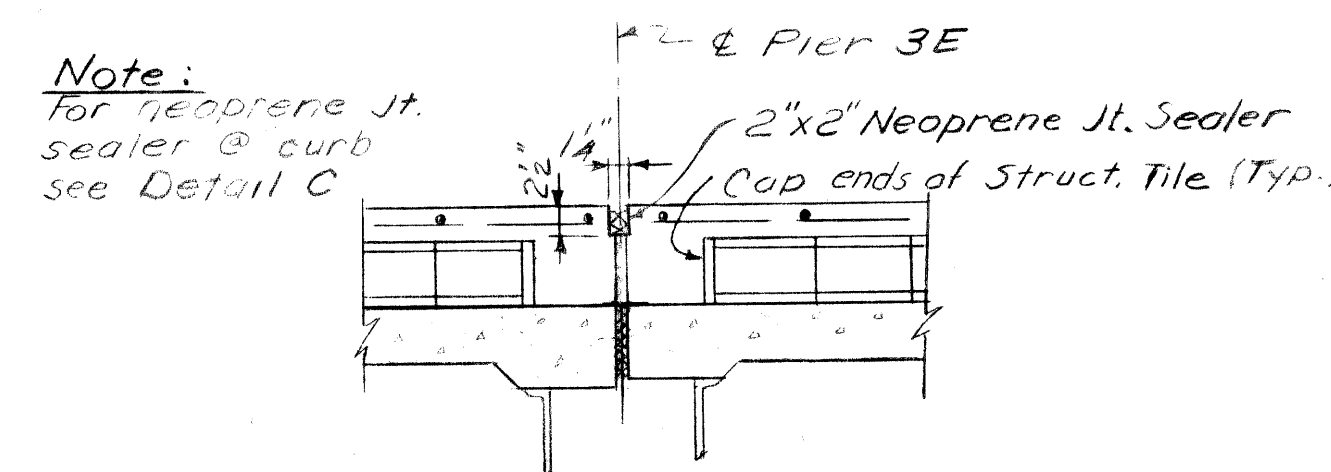
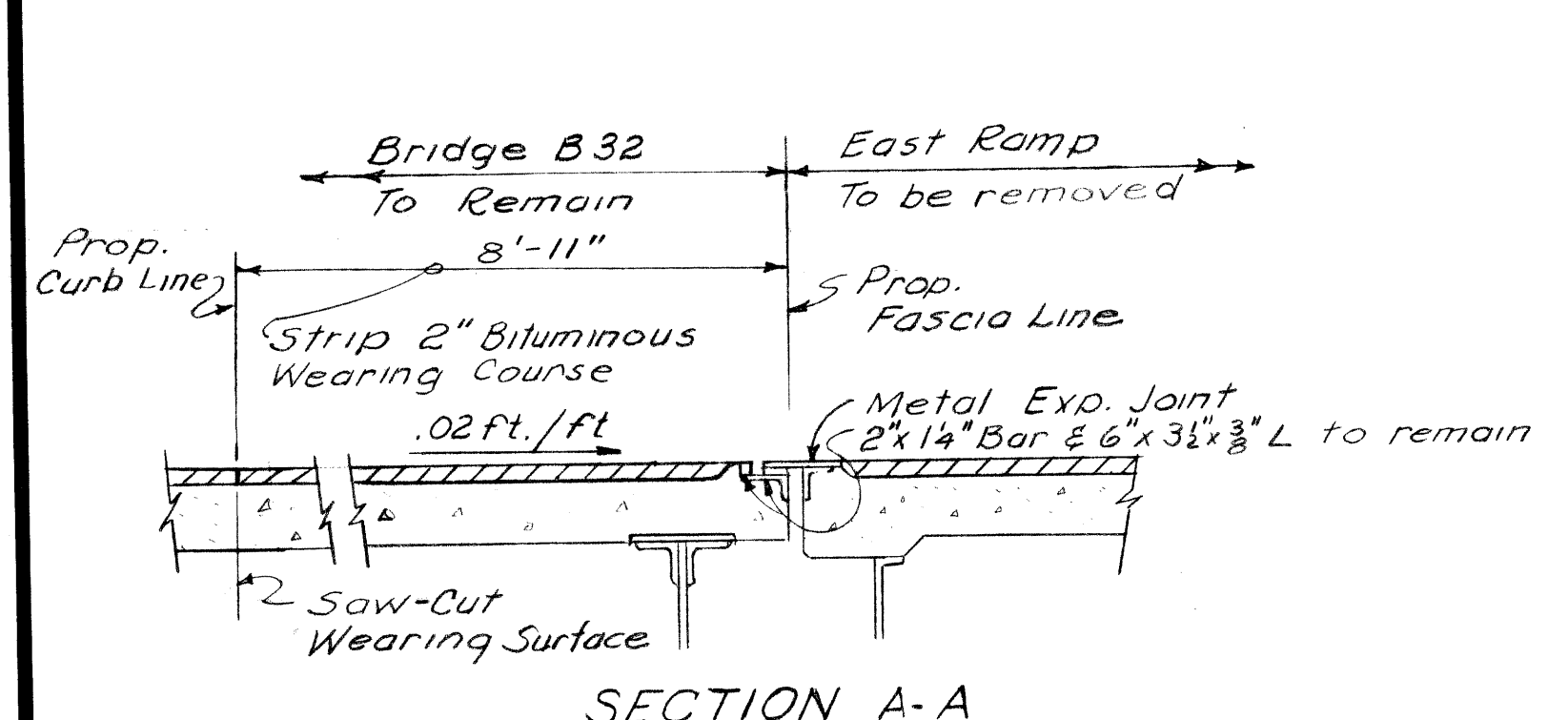




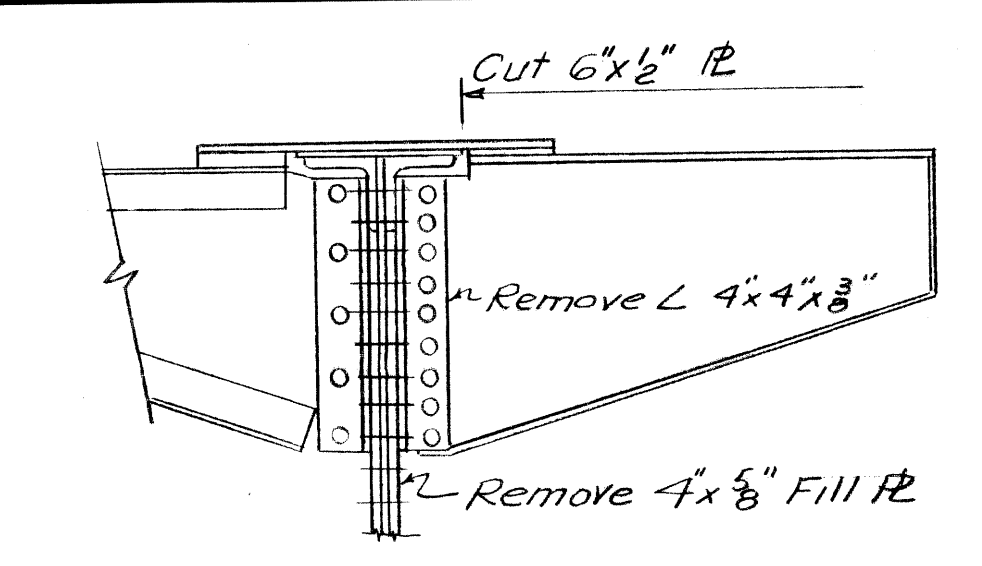
PLAN - SPAN 3E & PART SPAN 4E @ E. RAMP - EXISTING



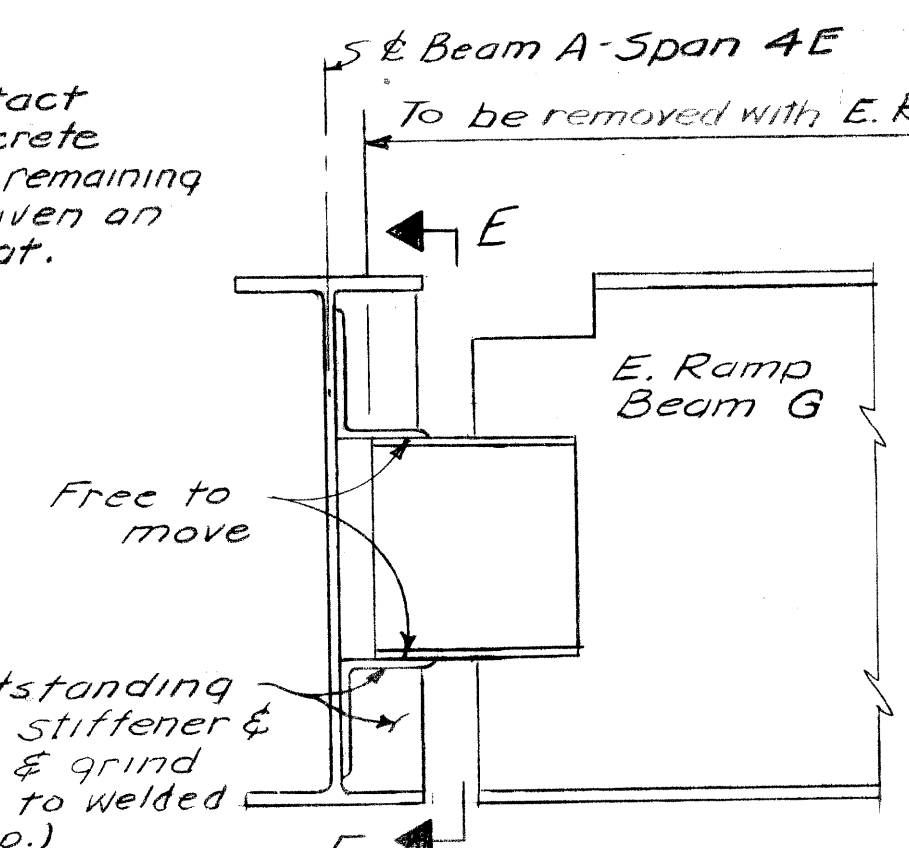
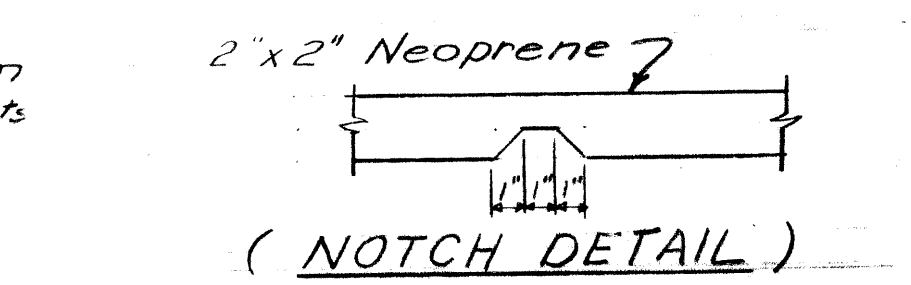
PLAN - PROPOSED SIDEWALK



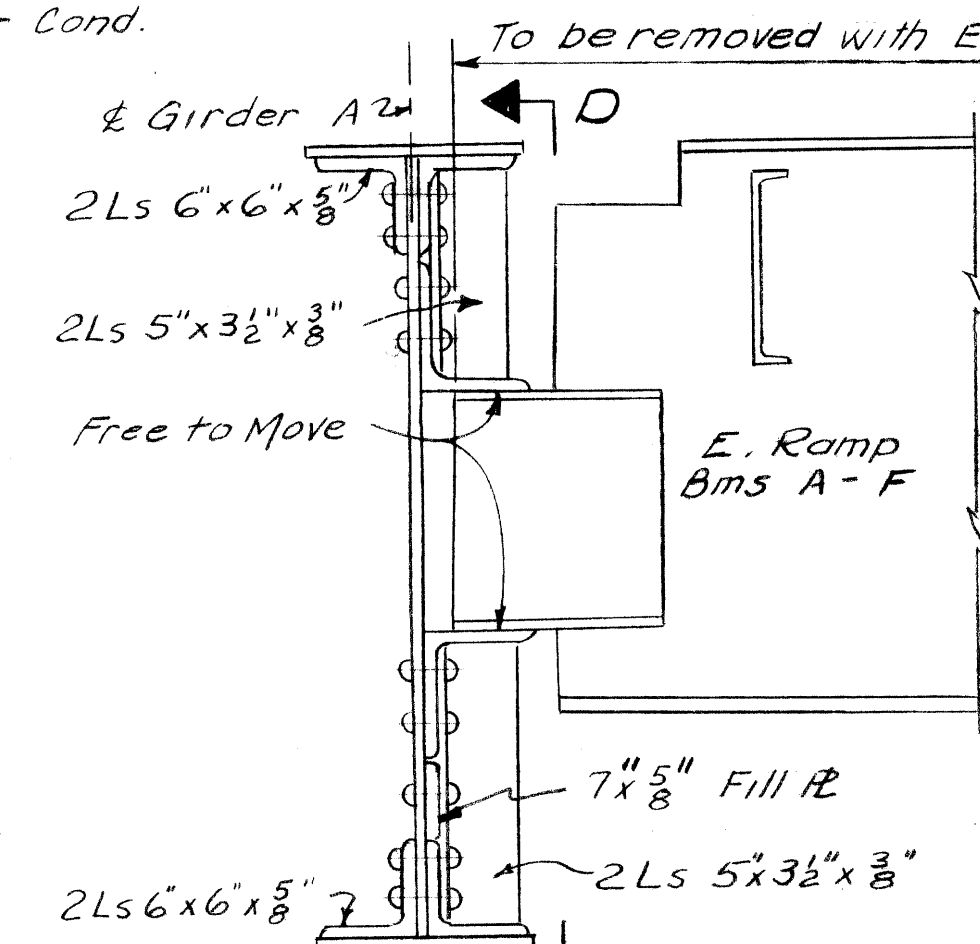
MOLDING DETAIL (At Fascia or Curb)



STRUCTURAL STEEL DETAIL - BRACKET



STRUCTURAL STEEL DETAIL - BEAM A CONNECTION TO EAST RAMP BEAM G



STRUCTURAL STEEL DETAIL - GIRDER A CONNECTION TO EAST RAMP - BEAMS A THRU F

MICHIGAN DEPARTMENT OF STATE HIGHWAYS

JEFFRIES FREEWAY  
 REVISIONS TO WEST GRAND BLVD. BRIDGE  
 CROSSING THE FORD FREEWAY IN DETROIT

SIDWALK &  
 STRUCTURAL STEEL DETAILS

PLANS PREPARED BY  
 CITY OF DETROIT  
 DEPARTMENT OF PUBLIC WORKS  
 CITY ENGINEERS OFFICE  
 BUREAU OF HIGHWAYS AND EXPRESSWAYS

APPROVED: *P. L. Lidew* STRUCTURAL ENGINEER  
 JOB No. PW 990(16)

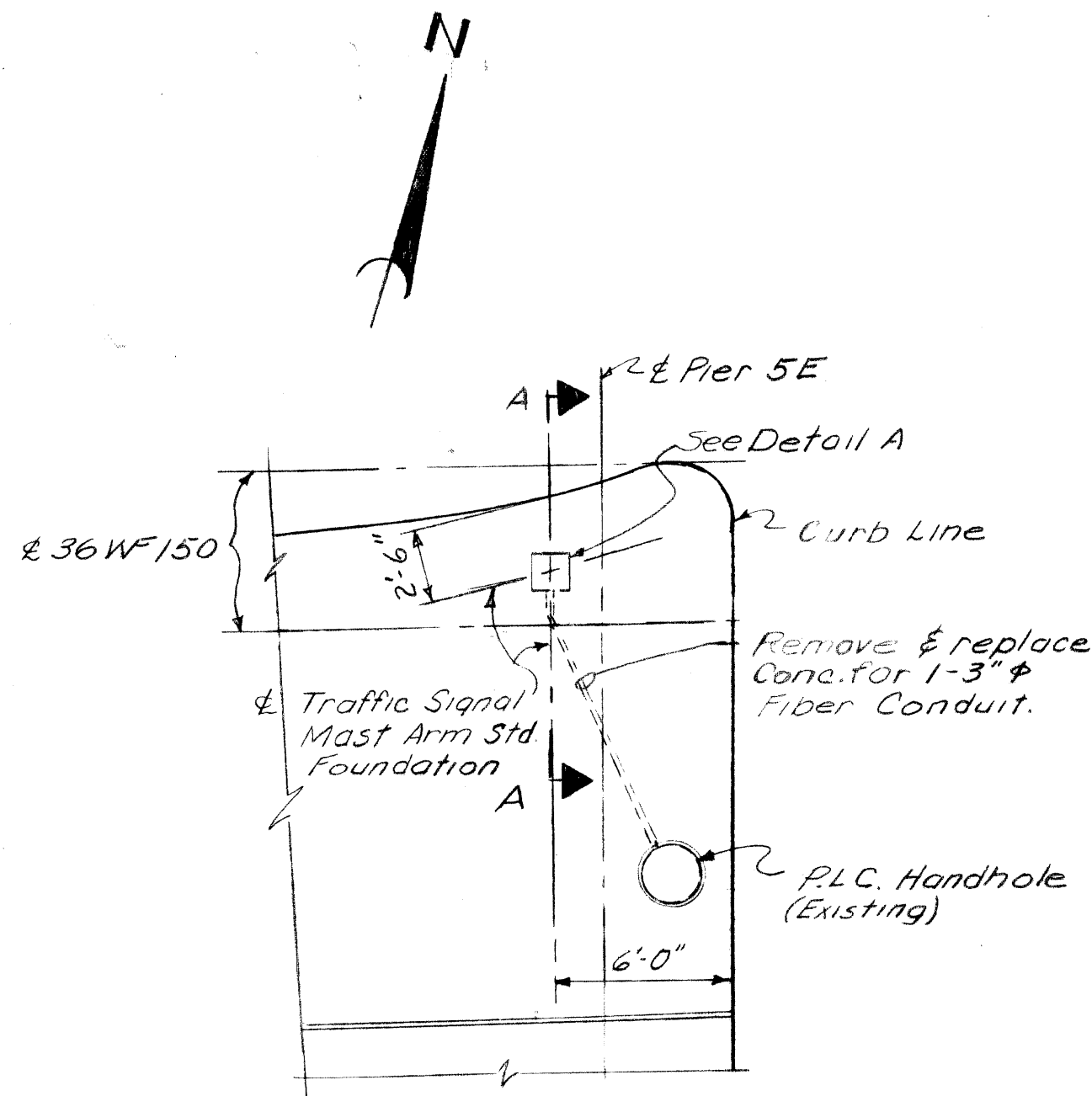
NO.	DESCRIPTION	DATE	BY

SQUAD BOSS: *SWEM* 9-66  
 DRAWN BY: *WAL* 9-66  
 TRACED BY: *SWEM* 9-66  
 CHECKED BY: *SWEM* 9-66  
 SHEET 3 OF 17

13 of 82023A

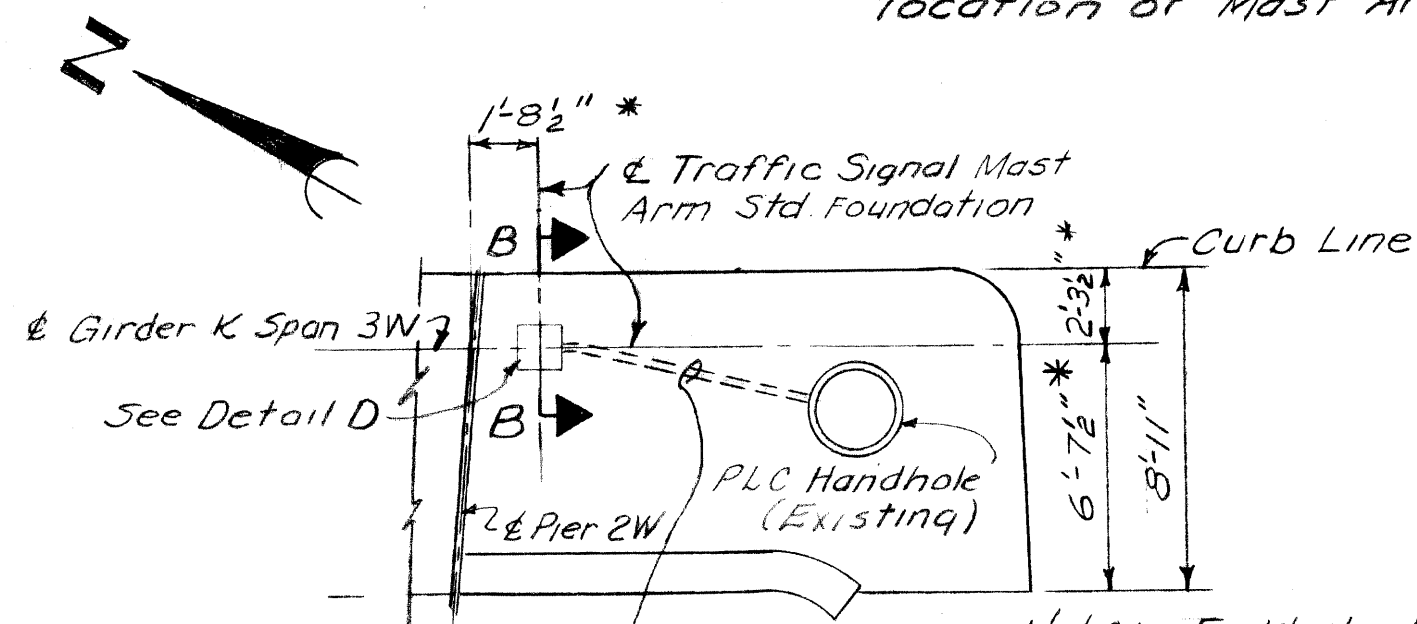
BLVD





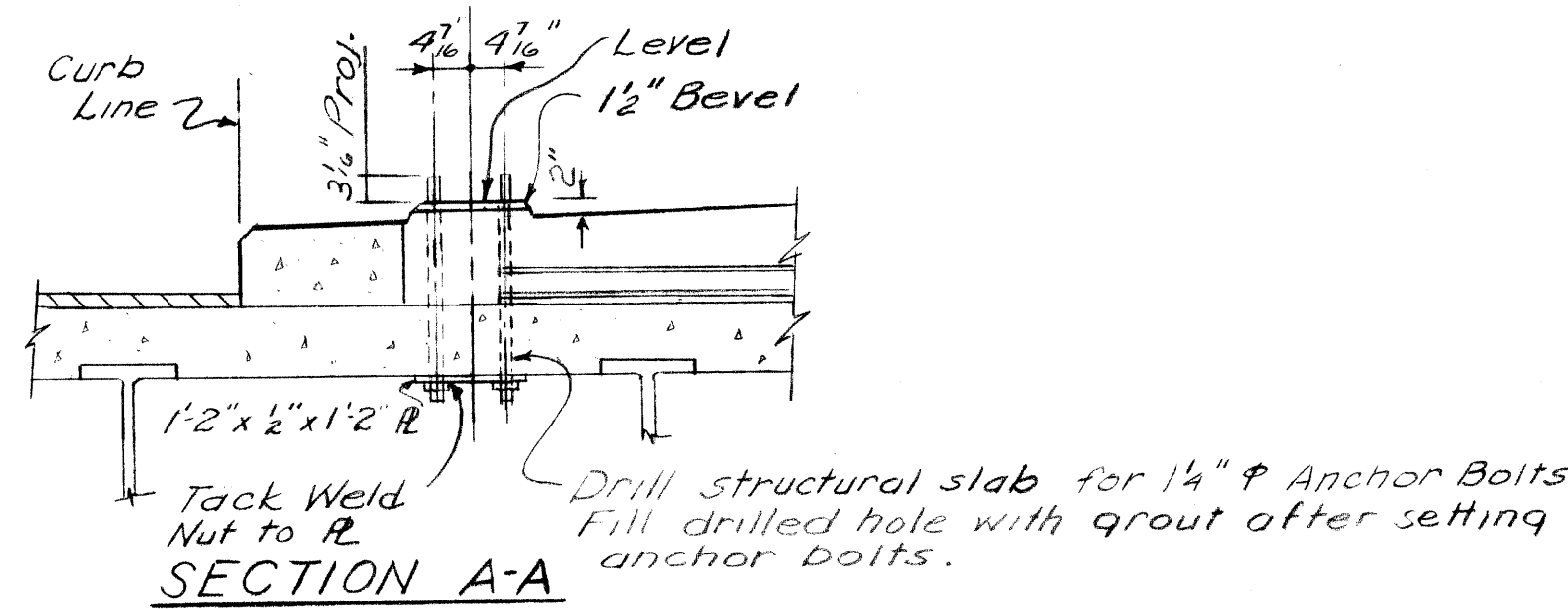
**PLAN**  
(TRAFFIC SIGNAL MAST ARM STD. FDN. ON CROSSBRIDGE MEDIAN)

Note: See Sh. 4 for general location of Mast Arm Std.

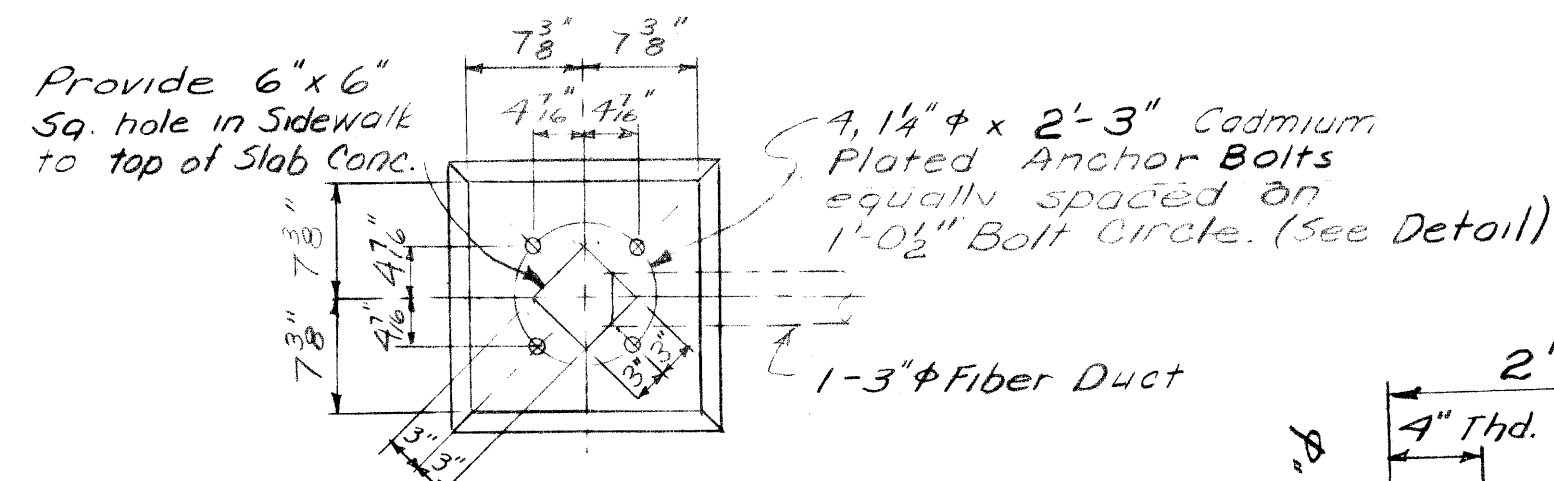


**PLAN**  
(TRAFFIC SIGNAL MAST ARM STD. FDN. ON N.W. CORNER S'BD. W. GRAND BLVD @ W. RAMP)

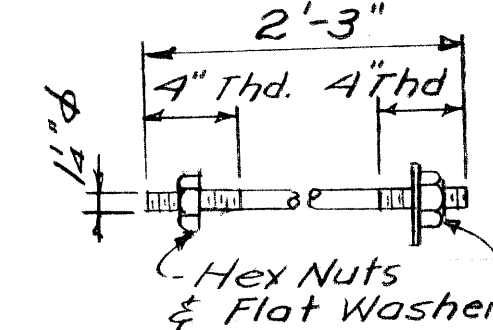
Note: Field check dimensions marked thus \* to insure proper positioning of holes drilled in R Girder E. Avoid drilling through rivets.



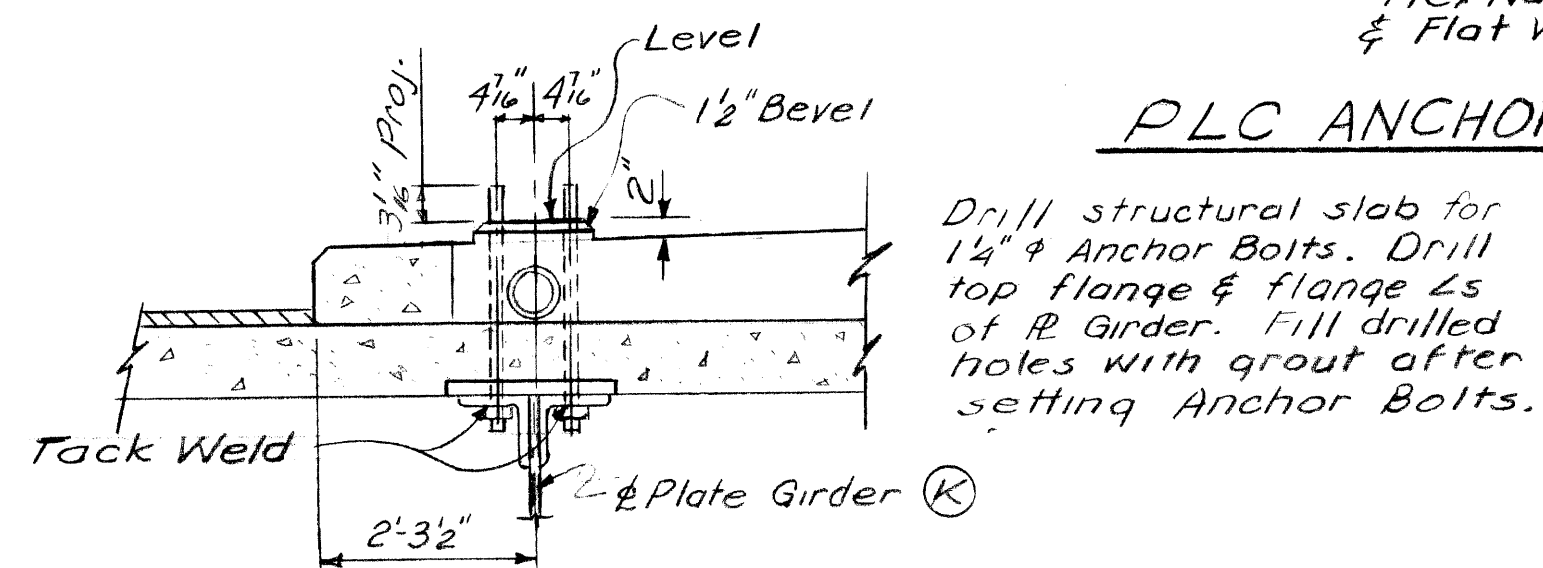
**SECTION A-A**



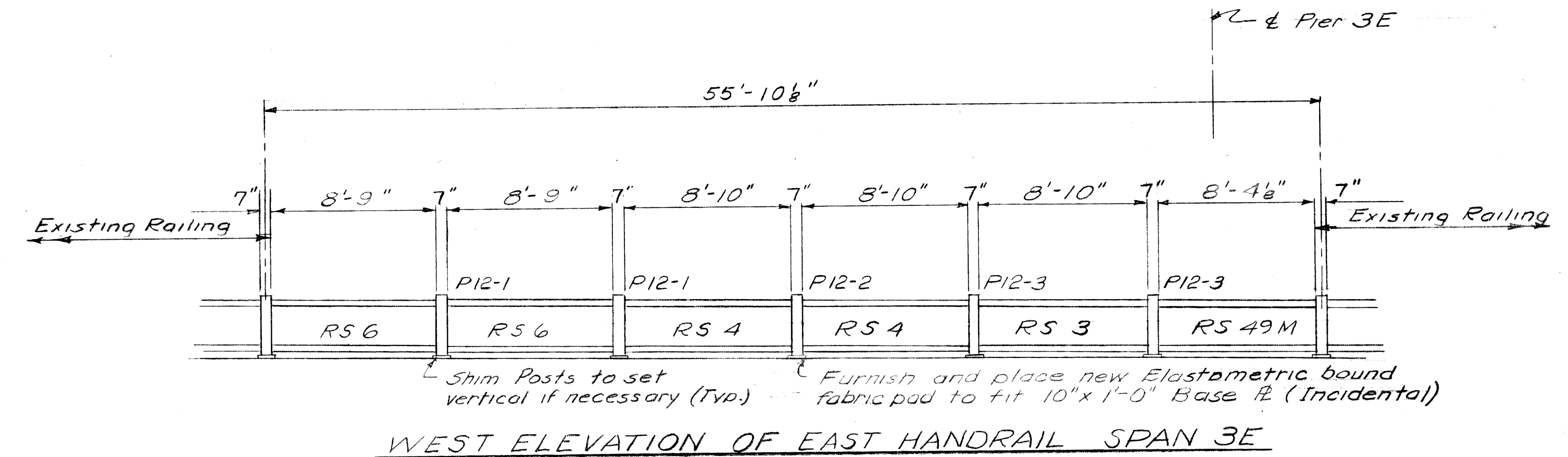
**DETAIL D**



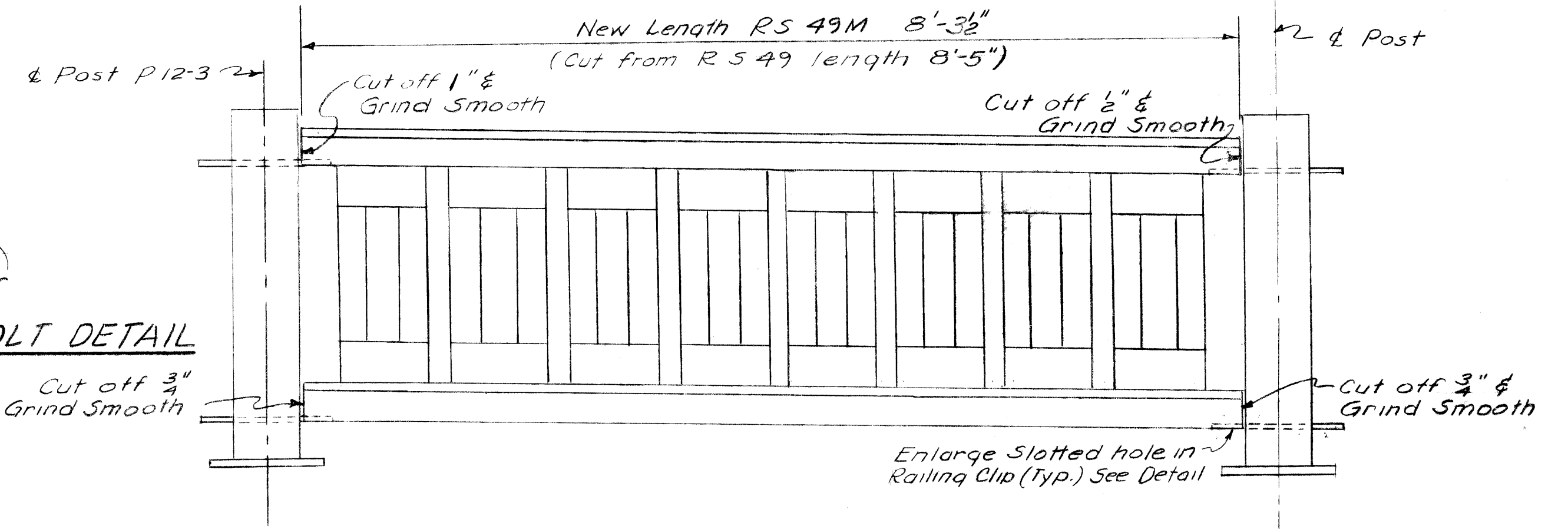
**PLC ANCHOR BOLT DETAIL**



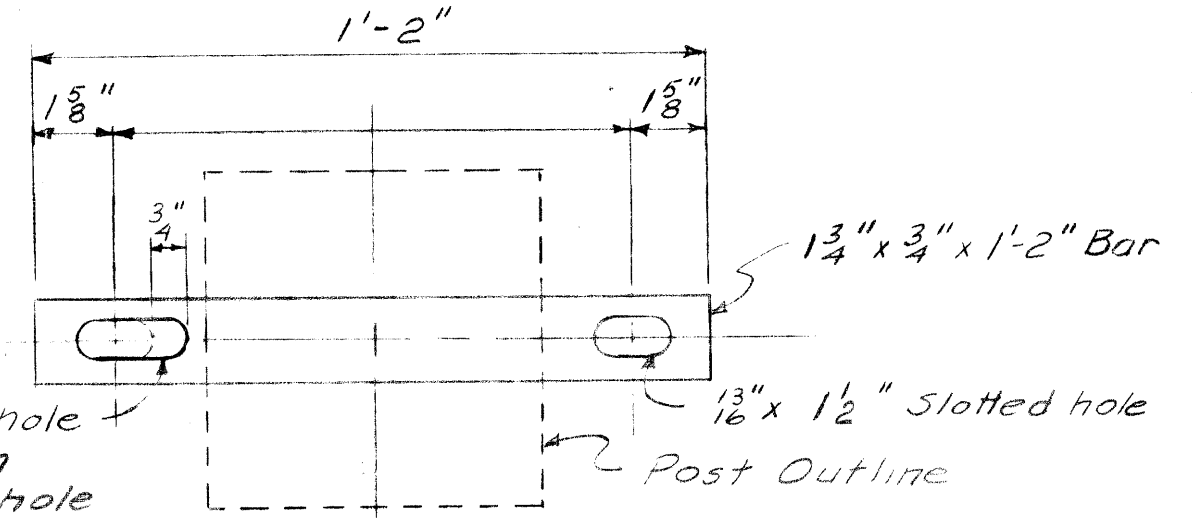
**SECTION B-B**



**WEST ELEVATION OF EAST HANDRAIL SPAN 3E**



**RAILING SECTION RS 49M**



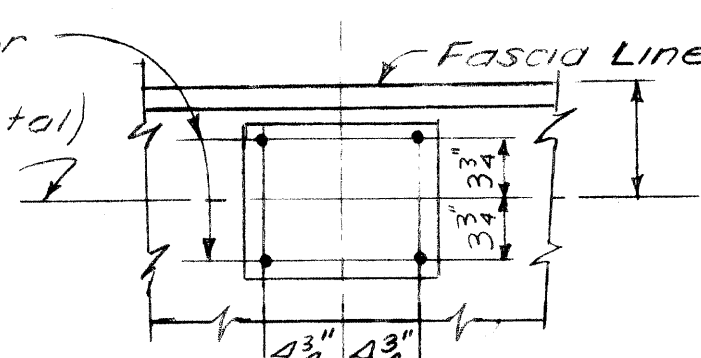
**RAILING CLIP DETAIL**

Notes: Railing Posts & Section shall be salvaged from Bridge S15 of 82023 A, except Railing Section RS 49 M shall be salvaged from S14 of 82023 (RS 49).

Anchor Bolts are to be cadmium plated & furnished with Hex nuts & washers

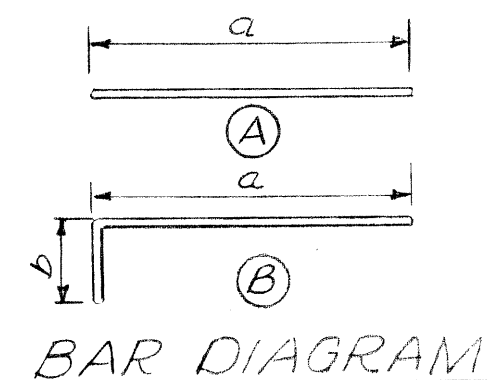
All materials necessary to Bridge Railing are incidental to Bridge Railing Salvaged & Reerected.

All materials necessary to Traffic Signal Mast Arm Std. Fdn. are incidental to 3" Fiber Conduit.



**DETAIL B**

STEEL REINFORCEMENT DETAILS						
Mark	a	b	Size	Length	No. Req'd.	Total Weight
A101	8'-3"	-	#4	8'-3"	42	231
A102	27'-9"	-	#4	27'-9"	14	260
A103	4'-9"	-	#4	4'-9"	7	22
B101	1'-1"	1'-2"	#4	2'-3"	42	63
B102	10 3/8"	1'-1 1/8"	#6	2'-0"	38	114



Total Steel Reinforcement 690 Lbs

Note: Right angle bends in Reinforcing Steel to be made about 4 pin of the minimum diameter allowed by the Standard Specifications

All bar numbers on this sheet to be prefixed S-13

**CONCRETE QUANTITY** (Gr. A (6AA)) 11.8 Cu. Yds.

MISCELLANEOUS QUANTITIES		
Item	Amount	Unit
Structural Tiles 8" x 12" x 12"	154	each
Structural Tiles 6" x 12" x 12"	191	each
2" x 2" Preformed Neoprene Jt. Sealer	10	Lin. Ft.
Bridge Railing Salvaged & Reerected	55.8	Lin. Ft.
Epoxy Bond Coat	3	Gals.
3" Fiber Conduit	18	Lin. Ft.

PLANS PREPARED BY  
CITY OF DETROIT  
DEPARTMENT OF PUBLIC WORKS  
CITY ENGINEERS' OFFICE  
BUREAU OF HIGHWAYS AND EXPRESSWAYS

APPROVED: *C. J. Linder*  
STRUCTURAL ENGINEER

JOB No. PW 990(16)

MICHIGAN DEPARTMENT OF STATE HIGHWAYS

JEFFRIES FREEWAY  
REVISIONS TO WEST GRAND BLVD. BRIDGE  
CROSSING THE FORD FREEWAY IN DETROIT

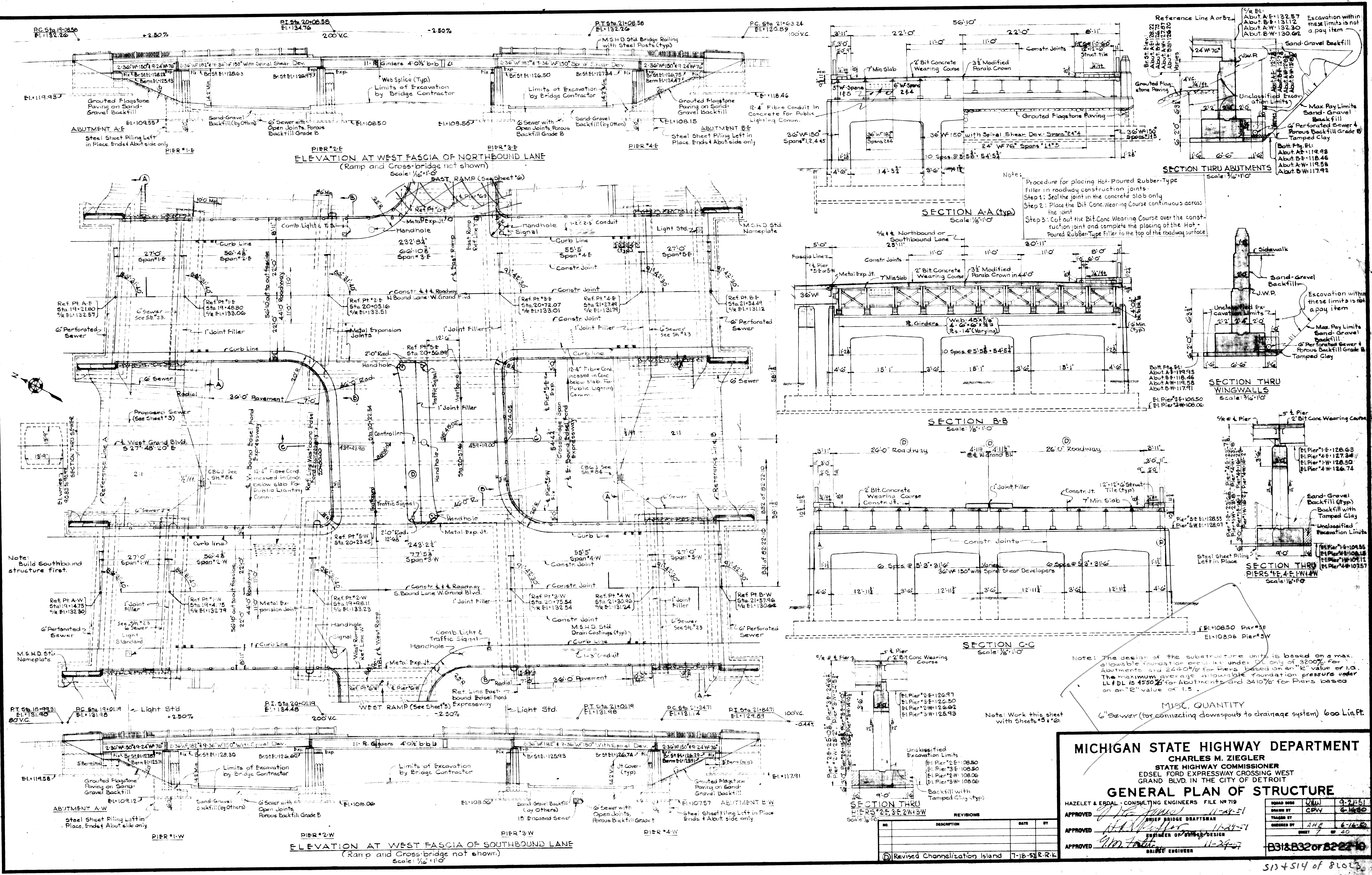
**RAILING & MISCELLANEOUS DETAILS**

NO.	DESCRIPTION	DATE	BY

CITY OF DETROIT  
SQUAD BOSS: STRIM 9-66  
DRAWN BY: WAL 9-66  
CHECKED BY: STRIM 9-66  
SHEET 4 OF 17

**S13/14** of 82023A





**MICHIGAN STATE HIGHWAY DEPARTMENT**  
**CHARLES M. ZIEGLER**  
 STATE HIGHWAY COMMISSIONER  
 EDELL FORD EXPRESSWAY CROSSING WEST  
 GRAND BLVD. IN THE CITY OF DETROIT

**GENERAL PLAN OF STRUCTURE**

HAZLET & ERDAL - CONSULTING ENGINEERS FILE NO. 719

APPROVED: *[Signature]* 11-24-57  
 TRACED BY: CPV  
 CHECKED BY: AHE 6-16-59  
 APPROVED: *[Signature]* 11-24-57  
 BUSINESS OF ENGINEERING DESIGN  
 APPROVED: *[Signature]* 11-24-57  
 BRIDGE ENGINEER

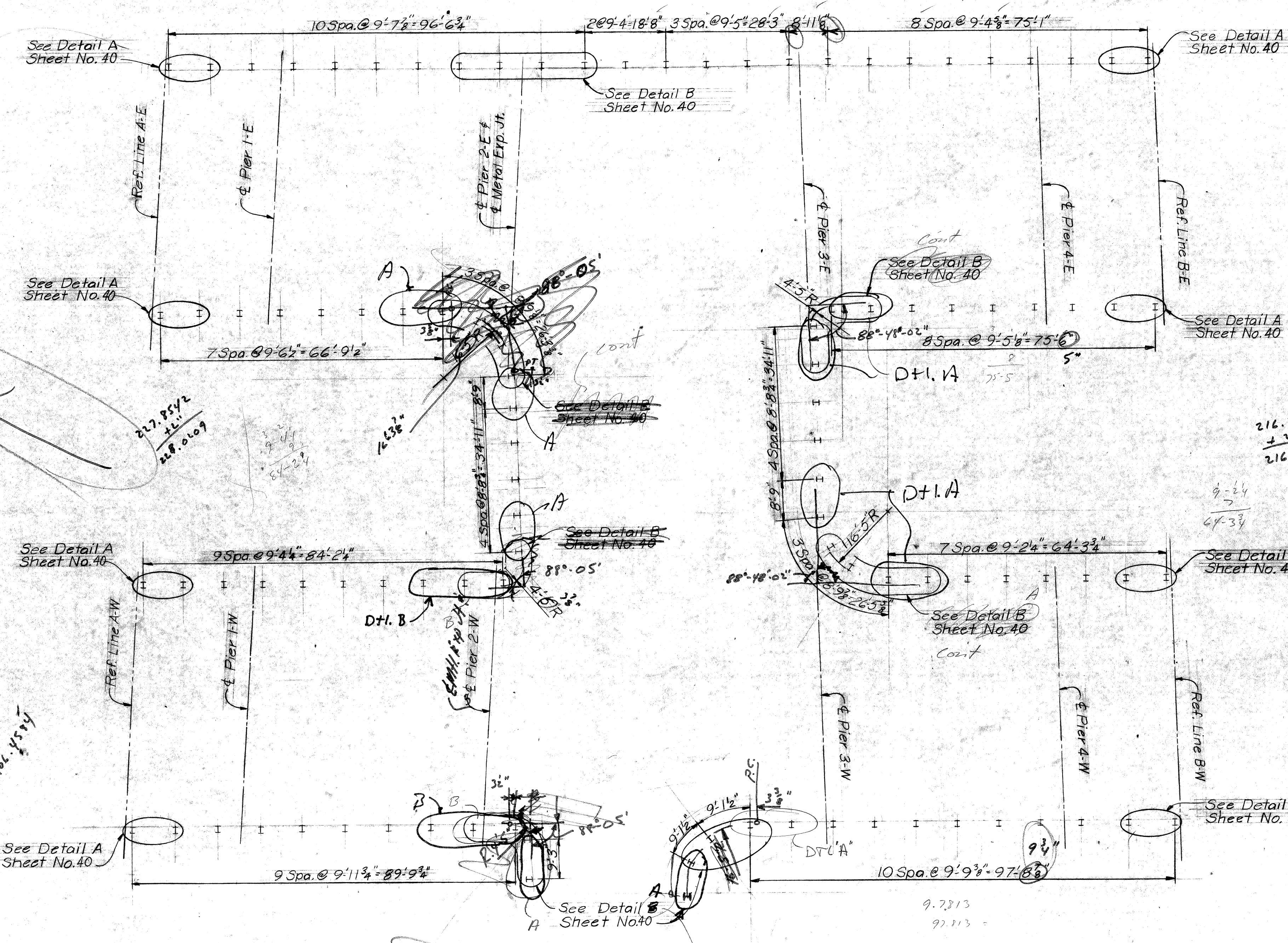
REVISIONS

NO.	DESCRIPTION	DATE	BY
1	Revised Channelization Island	7-18-57	R.R.L.

513+514 of 81023



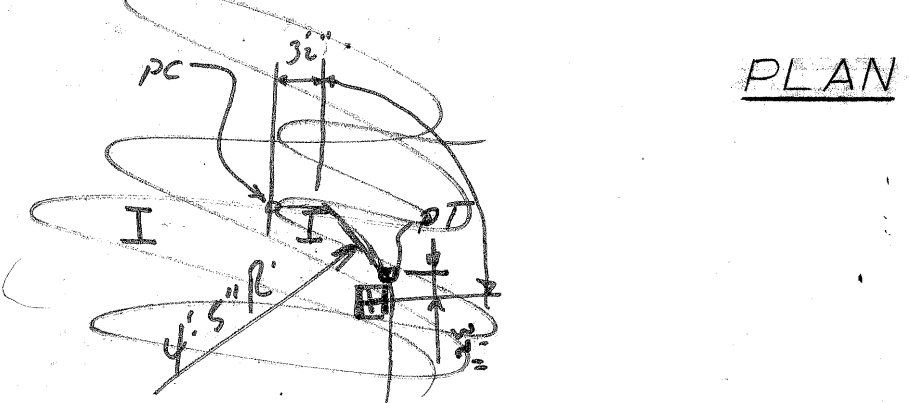
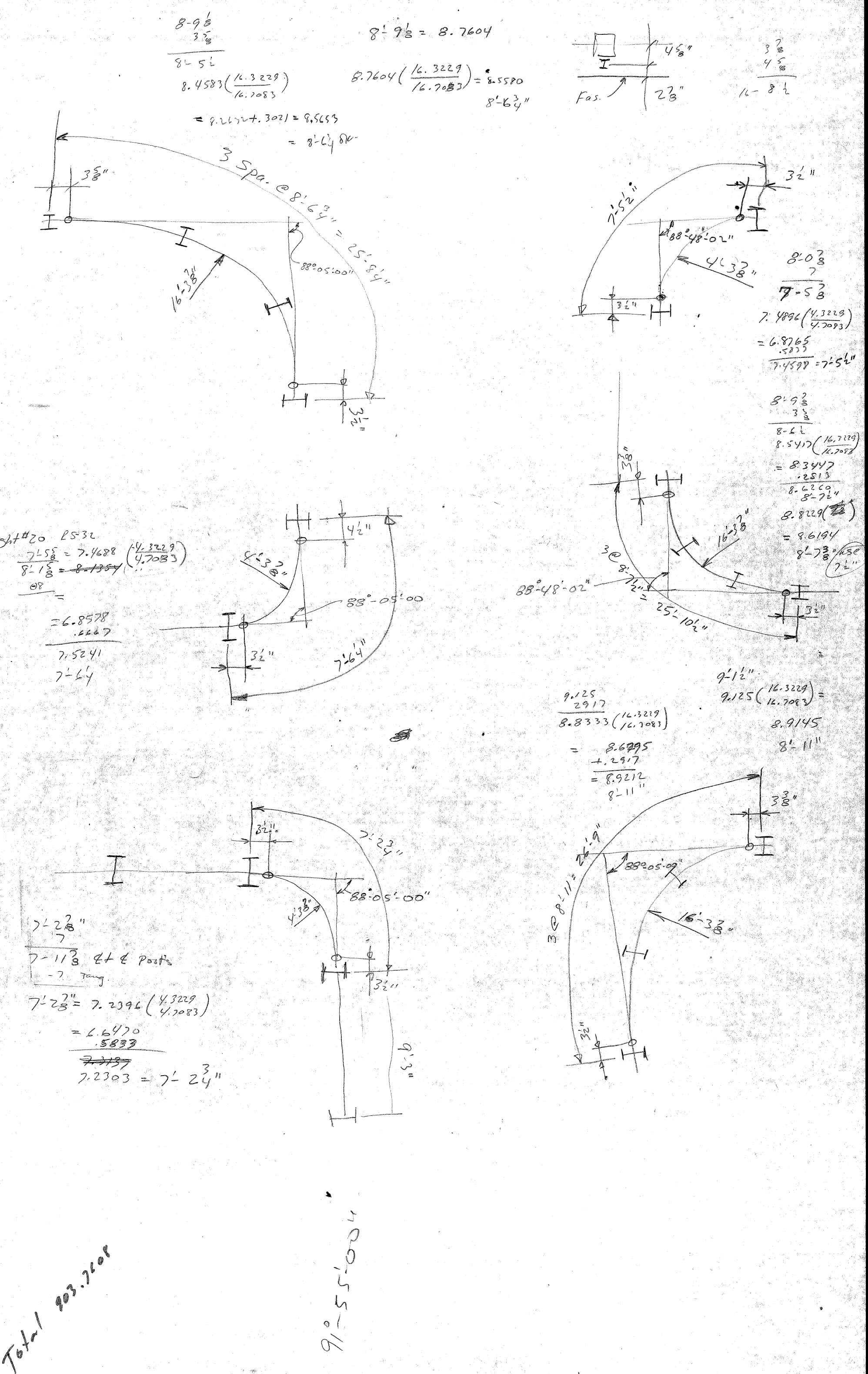
2.6523



$$\begin{aligned} &227.4896 \\ &+ 1.1617 \\ \hline &227.6513 \end{aligned}$$

$$\begin{aligned} &216.7293 \\ &+ 2'' \\ \hline &216.896 \end{aligned}$$

$$\begin{aligned} &14.5205 \\ &+ 1'' \\ \hline &14.7201 \end{aligned}$$



PLAN  
A let the fabric exp.

3-C "A"

120" Chain Link Fence and Framing 905 Lin. Ft. Estimated

MICHIGAN DEPARTMENT OF STATE HIGHWAYS

N B W. GRAND BOULEVARD OVER FORD FREEWAY  
S B W. GRAND BOULEVARD OVER FORD FREEWAY

APPROVED \_\_\_\_\_  
STRUCTURAL ENGINEER

PLANS PREPARED BY  
CITY OF DETROIT  
DEPARTMENT OF PUBLIC WORKS  
CITY ENGINEERS OFFICE

JOB No.  
05166 K  
05166 Q

REVISIONS			
NO.	DESCRIPTION	DATE	BY

SQUAD BOSS	L. G.	4-73
DRAWN BY		
TRACED BY		
CHECKED BY		
SHEET 8 OF 40		
S13 of 82023		
S14 of 82023		

Total 905.7201

9'-5'-0" / 16