

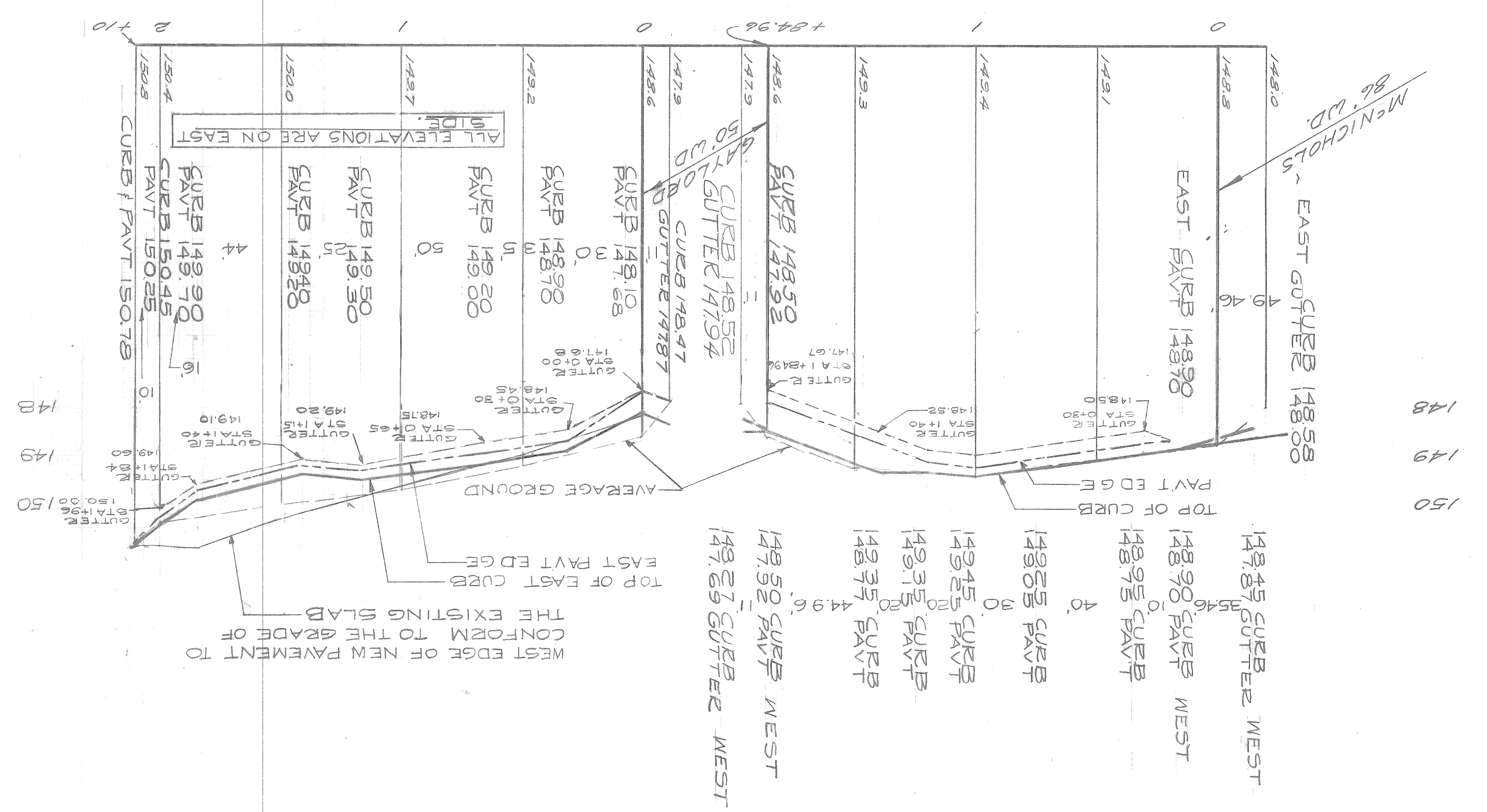
Sewer Approved  
8/1/89  
C. Klinger

REVISIONS		DATE	BY	DESCRIPTION
1	AS	7-27	W.L.T.	GAS LINE IN MICHOLS ADDED
2	AS			
3	AS			
4	AS			
5	AS			
6	AS			
7	AS			
8	AS			
9	AS			
10	AS			
11	AS			
12	AS			
13	AS			
14	AS			
15	AS			
16	AS			

**CITY OF DETROIT**  
DEPARTMENT OF PUBLIC WORKS  
CITY ENGINEERS OFFICE  
FOR  
**KLINGER**

PAVING OF KLINGER  
FROM 2246'S. OF N.P.L. OF MICHOLS  
TO 210' N. OF N.P.L. OF GAYLORD

INDEX	NO.	DATE
16	45	4-1-70
SHEET	NO.	ASSIGNMENT
1	45	NO. 325-DO-4
OF	NO.	CONTRACT
1	45	PW 7302 F
SHEETS	NO.	
1	45	



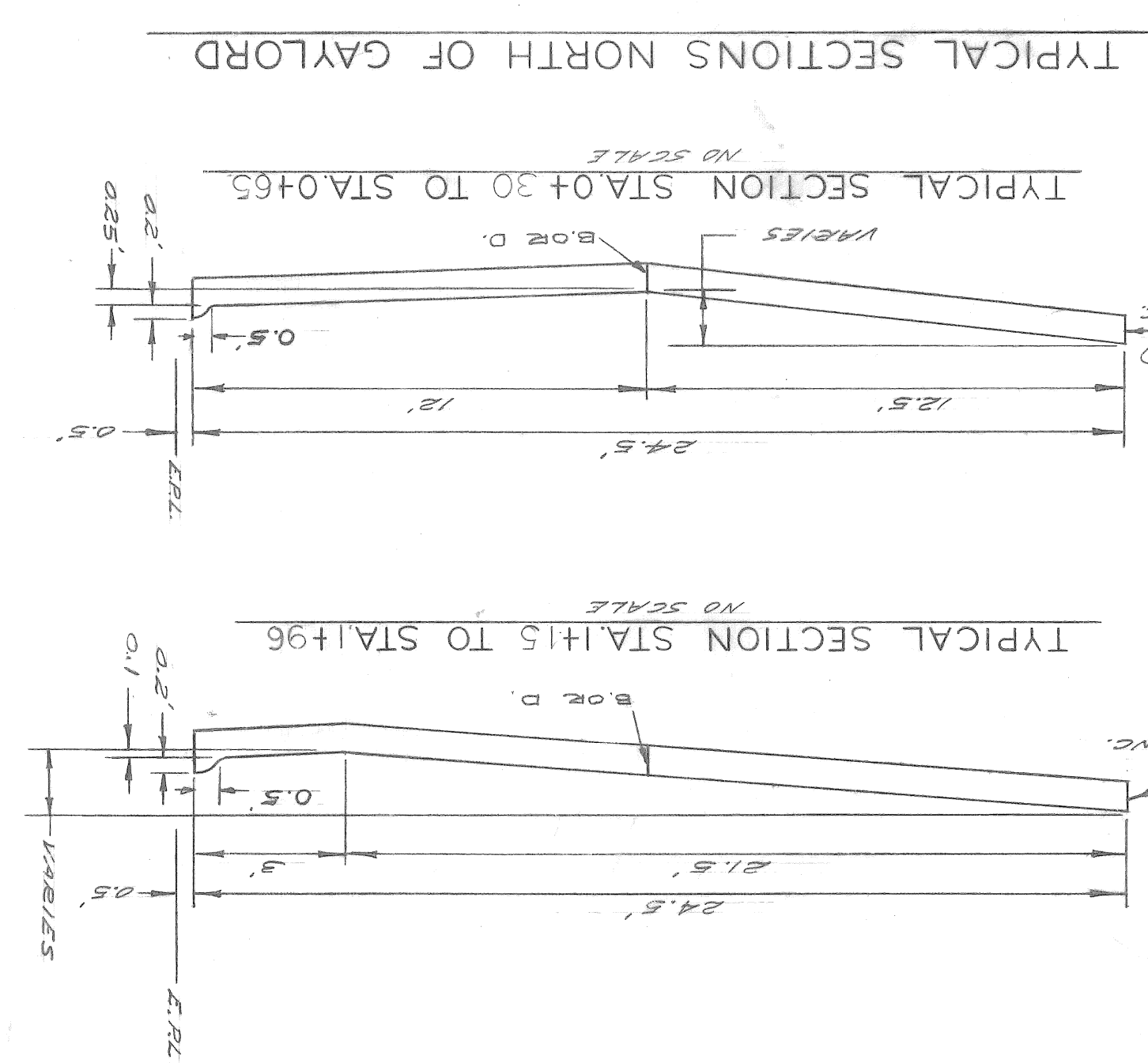
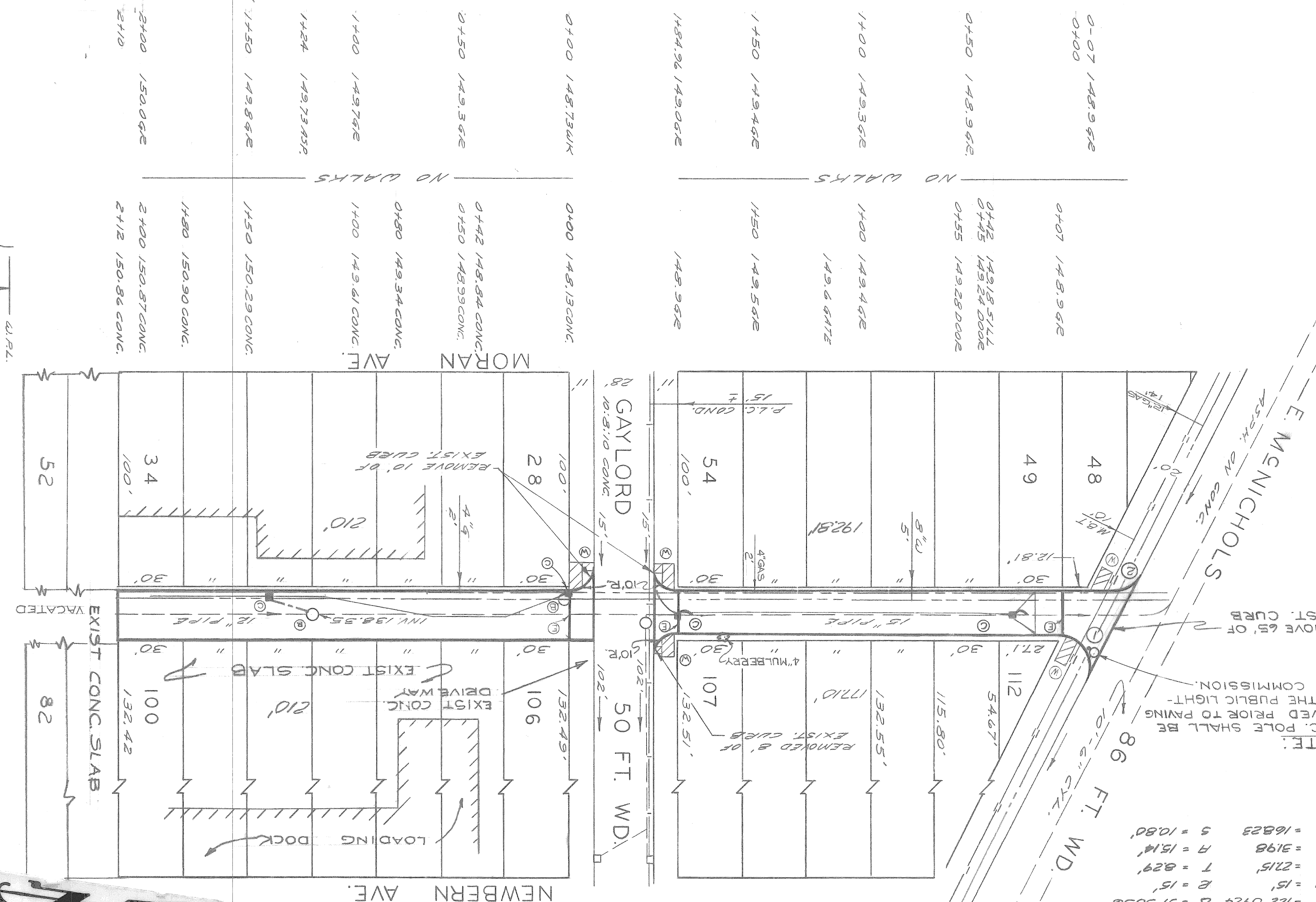
LOTS 2L	78,991	LENGTH	394.96
CITY SL	84,000	LENGTH	4200
TOTAL	87,391	LENGTH	436,96

NO.	ITEM	UNIT	LOTS CITY
1	EXCAVATION	CYDS	518
2	BEAM GRADING	CYDS	41
3	SEPARATE TYPE CURB F.M.L. UNREIN	LF	65
4	INTEGRAL TYPE CURB ENL.	LF	25
5	SIDEWALK ENL.	SFT	290
6	CATCH BASIN-NEW	EA	4
7	SEWER 12" PIPE	LF	50
8	PAVT. 9" UNIFORM REINFORCED	SYDS	452
9	TEST CORES	EA	2
10	SIDEWALKS-4" STANDARD	SFT	282
11	COLD PATCHING	SYDS	100
12	DRIVEWAYS-8" STANDARD	SFT	100
13	TREE REMOVAL 4"-12" DIA.	EA	1
14	MANHOLE-ADJUSTMENT	EA	2
15	MANHOLE-RECONSTRUCT CONE	EA	1
16	PAVT. 9" UNIFORM REINFORCED**	SYDS	572
17	INCLUDES REINFORCED INTEGRAL CURB.		
18	**HIGH EARLY STRENGTH CONCRETE.		

ALL PAVEMENTS TO BE 9" UNIFORM REINFORCED CONCRETE WITH REINFORCED INTEGRAL CURB, FROM GAYLORD TO 210' N. OF GAYLORD. USE HIGH EARLY STRENGTH CONCRETE.

TRANSVERSE CONTRACTION JOINTS TO BE SPACED 71'-2" C.C. SEE STD. DET. DRWG. C-4991 & C-4943.

- LEGEND**
- ⊙ ADJUST EXISTING MANHOLE
  - ⊙ ADJUST EXISTING CATCH BASIN
  - ⊙ CONSTRUCT STD. MANHOLE
  - ⊙ CONSTRUCT STD. CATCH BASIN
  - ⊙ TRANSFER EXISTING JOINT WITH LOAD TRANSFER DEVICE
  - ⊙ CONSTRUCT STD. CONC. WALK
  - ⊙ CONSTRUCT 6" CONC. WALK
  - ⊙ PLUS 2" COLD PATCH
  - ⊙ EXISTING SEMI-MANHOLE
  - ⊙ EXISTING SEMI-CATCH BASIN
  - ⊙ PROPOSED SEMI-MANHOLE
  - ⊙ PROPOSED SEMI-CATCH BASIN
  - ⊙ PROPOSED CATCH BASIN



**MARKS**

7 B.M. 45-253 N.E. COR. LOS. CAMPBELL & MICHOLS 183,897 B.C.

7 B.M. 45-253A N.E. COR. M'DONNELL & MICHOLS 183,750 B.C.

P.B.M. 45-254 N.W. COR. ELMAN & MICHOLS 183,085 B.C.

P.B.M. + HYD. N.E. COR. KLINGER & GAYLORD 151,81

C.B.M. SPIKE IN P.L.C. POLE-KLINGER & MICHOLS 183,93

BOOK	NO.	DATE	BY
2244 P(1)	NO.	3-12-69	
SCALE	HORIZONTAL	1" = 40'	
	VERTICAL	1" = 2'	
NOTE	FOR SYMBOLS, ETC., SEE STANDARD DETAIL DRAWING NO. C-173		
CONSTRUCTION	STRUCTURES WHEREIN OR NOT INDICATED ON PLANS.		
NO. 10	DATE 3-12-69		
PAVING CONTRACTOR			