

BENCH MARK INFORMATION

BM #1 = CHISEL MARK ON SIDE WALK E. RANDOLPH 40' NORTH BATES ST. =100 FT

BM #2 = CHISEL MARK ON SIDE WALK E. RANDOLPH 29' NORTH FARMER ST. ST. =97.21 FT

HORIZONTAL CONTROL POINTS

1- SURVEY CONTROL TRAVERSE POINT CP#1:
NORTHING (Y) = 5000, EASTING (X) = 5000
Chisel 'x' mark on sidewalk , 40 ft NW corner Bates and Randolph

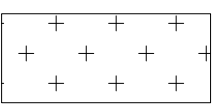
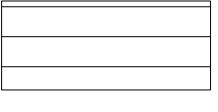
2- SURVEY CONTROL TRAVERSE POINT CP#2:
NORTHING (Y) = 4790.11, EASTING (X) = 5000
Chisel 'x' mark on sidewalk, 29 ft NW corner Farmers and Randolph.

3- SURVEY CONTROL TRAVERSE POINT #350:
NORTHING (Y) = 5686.88, EASTING (X) = 4960.93
Chisel 'x' mark on sidewalk, NE corner Broadway and Gratiot

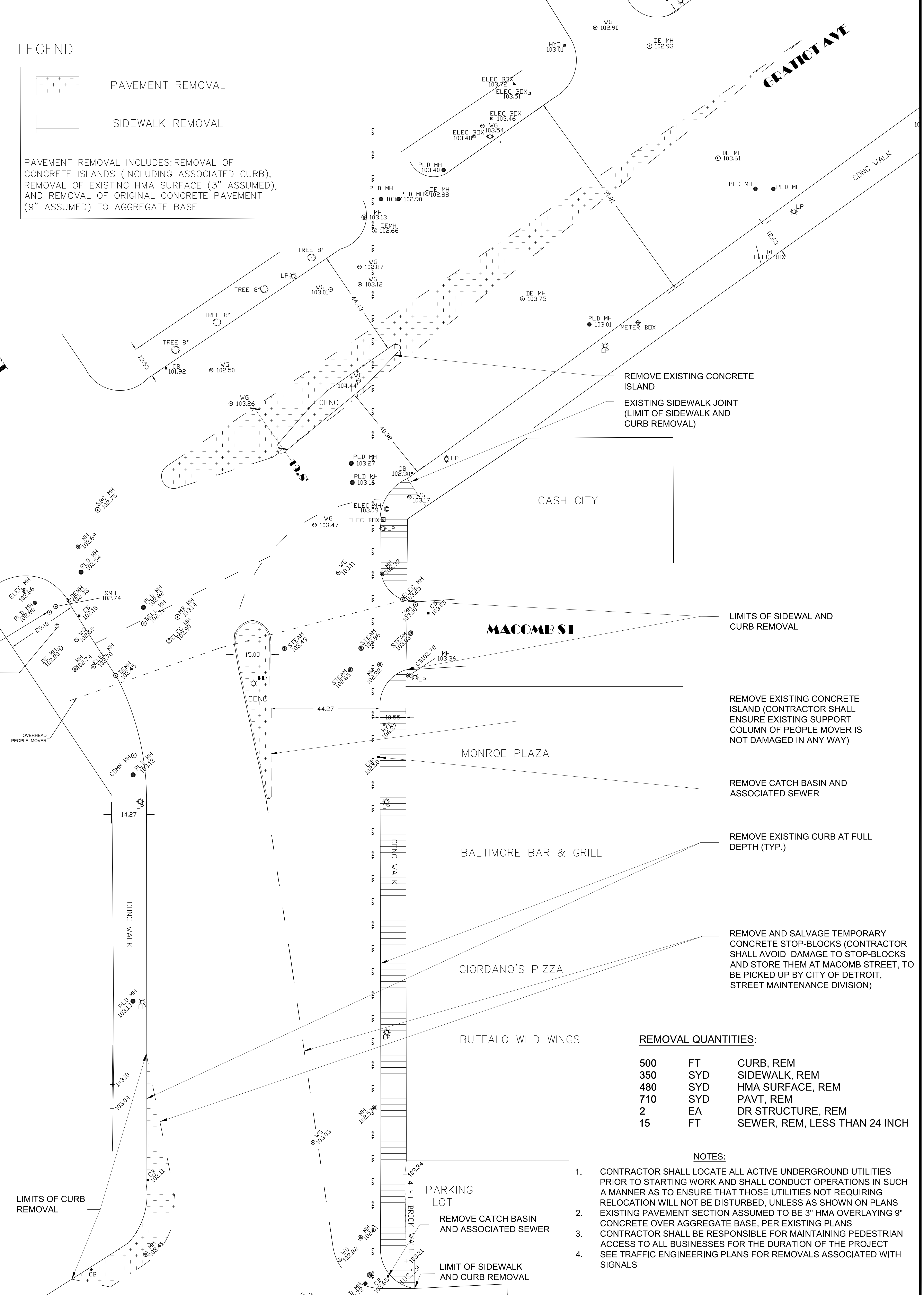
NOTE:

- FOR TRAFFIC SIGNALS REMOVAL/RELOCATION SEE TRAFFIC ENGINEERING PLANS
- FOR GENERAL NOTES SEE MDOT PLANS

LEGEND

 — PAVEMENT REMOVAL
 — SIDEWALK REMOVAL

PAVEMENT REMOVAL INCLUDES: REMOVAL OF CONCRETE ISLANDS (INCLUDING ASSOCIATED CURB), REMOVAL OF EXISTING HMA SURFACE (3" ASSUMED), AND REMOVAL OF ORIGINAL CONCRETE PAVEMENT (9" ASSUMED) TO AGGREGATE BASE



REMOVE EXISTING CONCRETE ISLAND
EXISTING SIDEWALK JOINT (LIMIT OF SIDEWALK AND CURB REMOVAL)

LIMITS OF SIDEWALK AND CURB REMOVAL

REMOVE EXISTING CONCRETE ISLAND (CONTRACTOR SHALL ENSURE EXISTING SUPPORT COLUMN OF PEOPLE MOVER IS NOT DAMAGED IN ANY WAY)

REMOVE CATCH BASIN AND ASSOCIATED SEWER

REMOVE EXISTING CURB AT FULL DEPTH (TYP.)

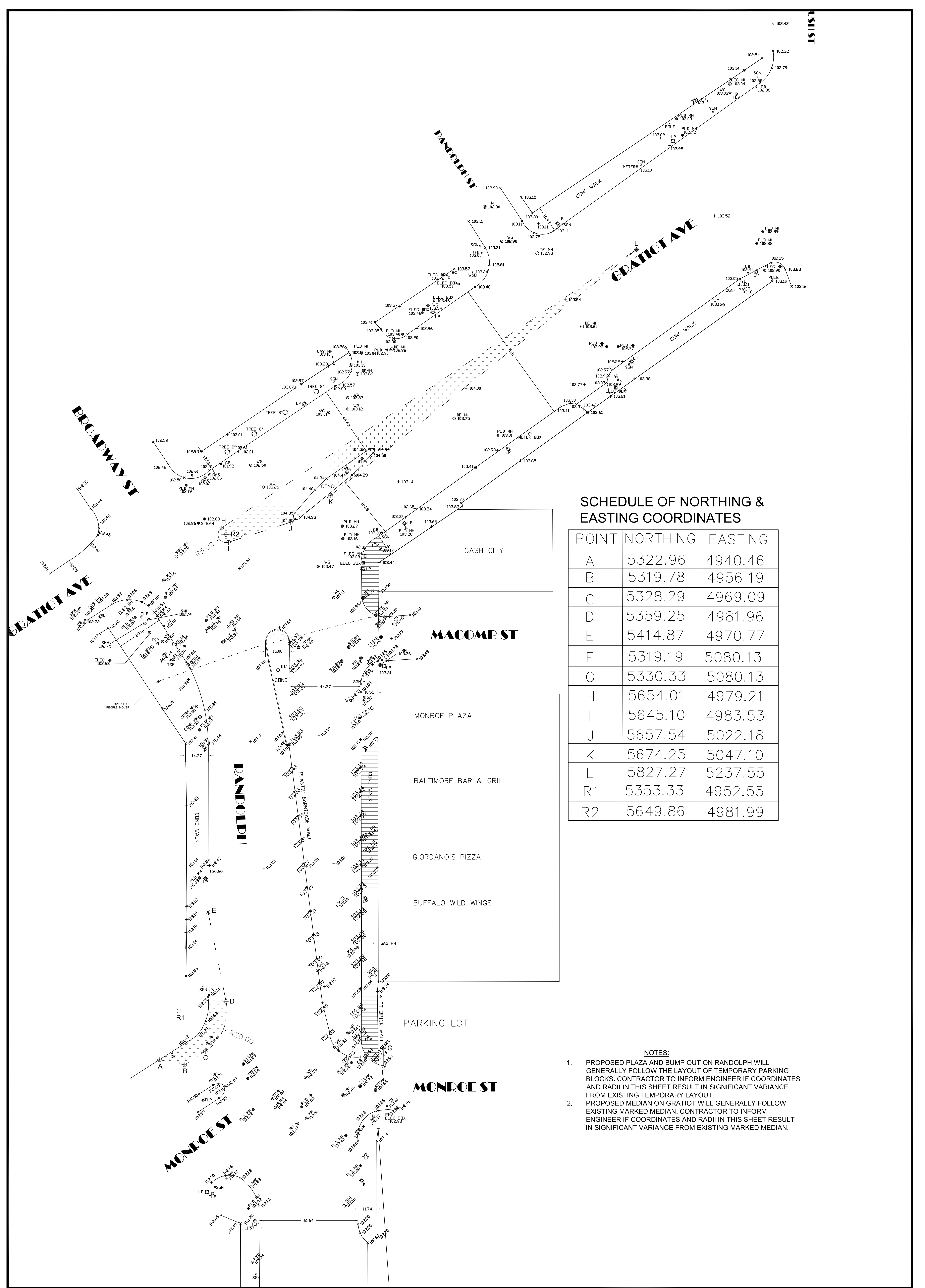
REMOVE AND SALVAGE TEMPORARY CONCRETE STOP-BLOCKS (CONTRACTOR SHALL AVOID DAMAGE TO STOP-BLOCKS AND STORE THEM AT MACOMB STREET, TO BE PICKED UP BY CITY OF DETROIT, STREET MAINTENANCE DIVISION)

REMOVAL QUANTITIES:

500	FT	CURB, REM
350	SYD	SIDEWALK, REM
480	SYD	HMA SURFACE, REM
710	SYD	PAVT, REM
2	EA	DR STRUCTURE, REM
15	FT	SEWER, REM, LESS THAN 24 INCH

NOTES:

- CONTRACTOR SHALL LOCATE ALL ACTIVE UNDERGROUND UTILITIES PRIOR TO STARTING WORK AND SHALL CONDUCT OPERATIONS IN SUCH A MANNER AS TO ENSURE THAT THOSE UTILITIES NOT REQUIRING RELOCATION WILL NOT BE DISTURBED, UNLESS AS SHOWN ON PLANS
- EXISTING PAVEMENT SECTION ASSUMED TO BE 3" HMA OVERLAYING 9" CONCRETE OVER AGGREGATE BASE, PER EXISTING PLANS
- CONTRACTOR SHALL BE RESPONSIBLE FOR MAINTAINING PEDESTRIAN ACCESS TO ALL BUSINESSES FOR THE DURATION OF THE PROJECT SEE TRAFFIC ENGINEERING PLANS FOR REMOVALS ASSOCIATED WITH SIGNALS



SCHEDULE OF NORTHING & EASTING COORDINATES

POINT	NORTHING	EASTING
A	5322.96	4940.46
B	5319.78	4956.19
C	5328.29	4969.09
D	5359.25	4981.96
E	5414.87	4970.77
F	5319.19	5080.13
G	5330.33	5080.13
H	5654.01	4979.21
I	5645.10	4983.53
J	5657.54	5022.18
K	5674.25	5047.10
L	5827.27	5237.55
R1	5353.33	4952.55
R2	5649.86	4981.99

NOTES:

1. PROPOSED PLAZA AND BUMP OUT ON RANDOLPH WILL GENERALLY FOLLOW THE LAYOUT OF TEMPORARY PARKING BLOCKS. CONTRACTOR TO INFORM ENGINEER IF COORDINATES AND RADII IN THIS SHEET RESULT IN SIGNIFICANT VARIANCE FROM EXISTING TEMPORARY LAYOUT.
2. PROPOSED MEDIAN ON GRATIOT WILL GENERALLY FOLLOW EXISTING MARKED MEDIAN. CONTRACTOR TO INFORM ENGINEER IF COORDINATES AND RADII IN THIS SHEET RESULT IN SIGNIFICANT VARIANCE FROM EXISTING MARKED MEDIAN.



GENERAL SERVICES DEPARTMENT
LANDSCAPE DESIGN UNIT
18100 MEYERS RD, UPPER LEVEL
DETROIT, MICHIGAN 48226
(313) 628-0918 Phone
(313) 628-0915 Fax

PREPARED BY:
LANDSCAPE DESIGN UNIT


DRAWN BY: FC **DATE:** 02/13/2018

CHECKED BY: TK/LA/TS/AHS **DATE:**

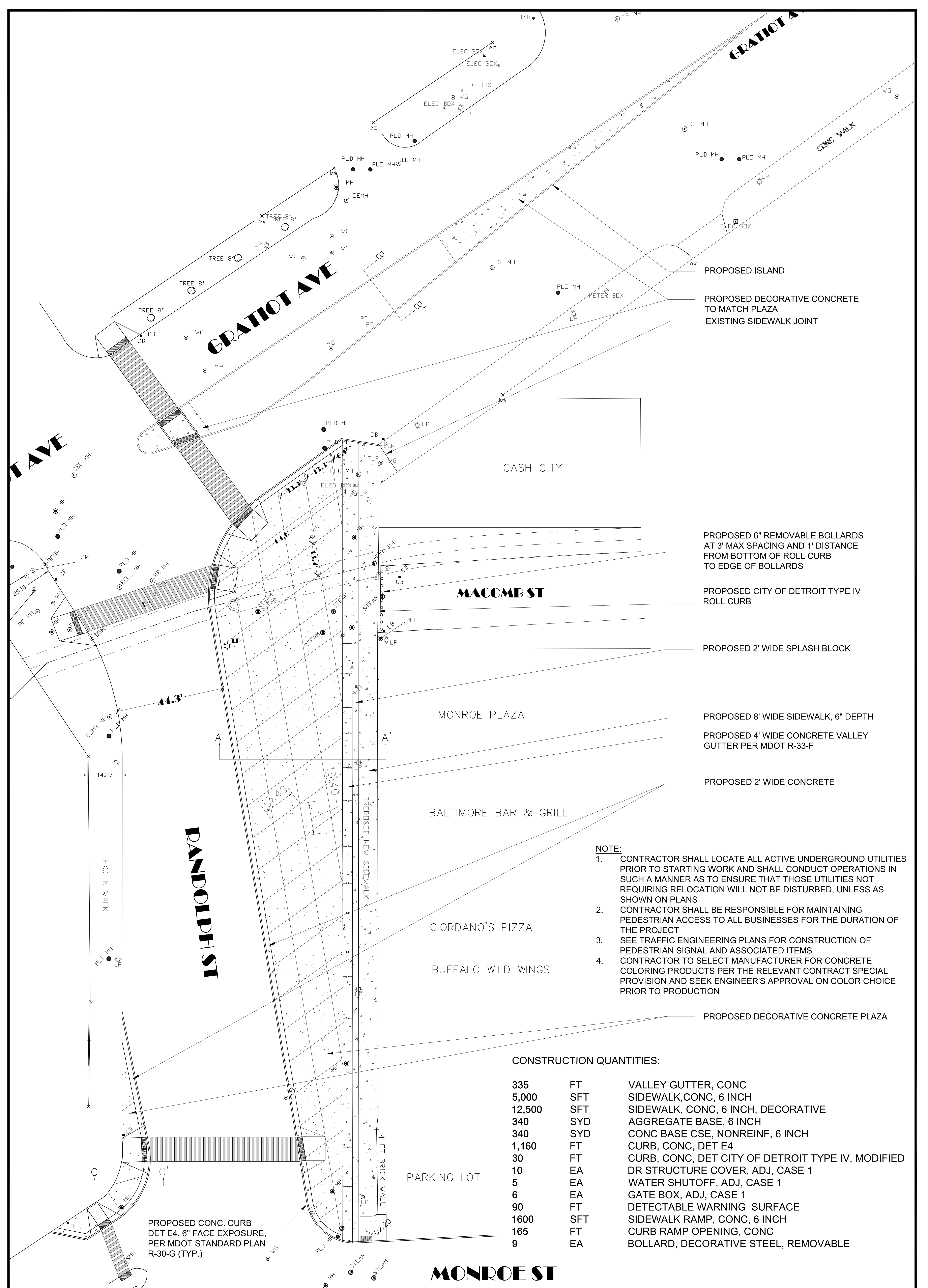
APPROVED BY: L. ARAKELOV / AHS

SHEET TITLE:
REMOVAL PLAN (2)

PROJECT:
RANDOLPH AND GRATIOT PLAZA

N  **SHEET NO. 3**

SCALE:
1/2" = 1' - 0"



PROPOSED ISLAND
 PROPOSED DECORATIVE CONCRETE TO MATCH PLAZA
 EXISTING SIDEWALK JOINT

PROPOSED 6" REMOVABLE BOLLARDS AT 3' MAX SPACING AND 1' DISTANCE FROM BOTTOM OF ROLL CURB TO EDGE OF BOLLARDS

PROPOSED CITY OF DETROIT TYPE IV ROLL CURB

PROPOSED 2' WIDE SPLASH BLOCK

PROPOSED 8' WIDE SIDEWALK, 6" DEPTH

PROPOSED 4' WIDE CONCRETE VALLEY GUTTER PER MDOT R-33-F

PROPOSED 2' WIDE CONCRETE

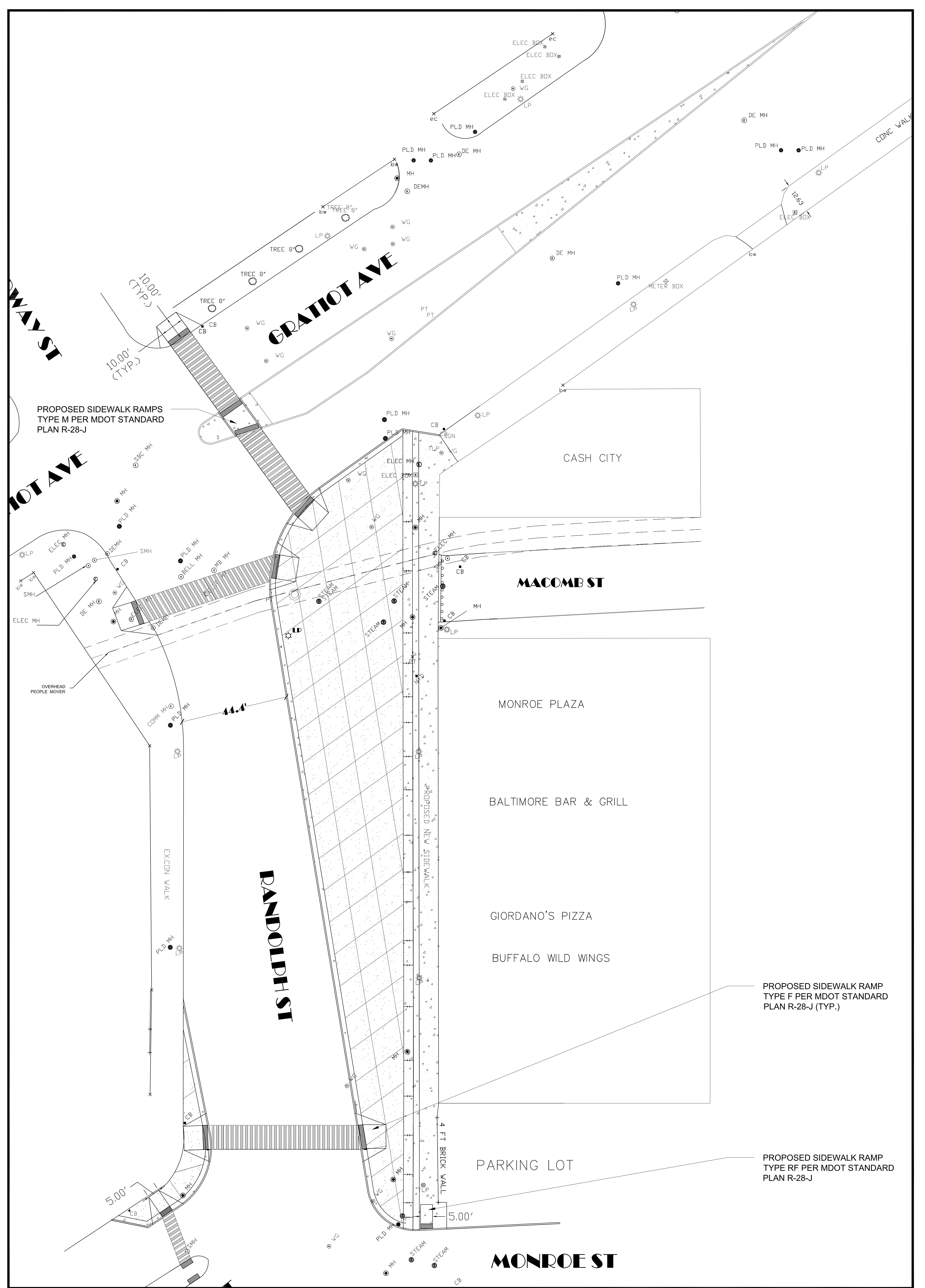
- NOTE:**
1. CONTRACTOR SHALL LOCATE ALL ACTIVE UNDERGROUND UTILITIES PRIOR TO STARTING WORK AND SHALL CONDUCT OPERATIONS IN SUCH A MANNER AS TO ENSURE THAT THOSE UTILITIES NOT REQUIRING RELOCATION WILL NOT BE DISTURBED, UNLESS AS SHOWN ON PLANS
 2. CONTRACTOR SHALL BE RESPONSIBLE FOR MAINTAINING PEDESTRIAN ACCESS TO ALL BUSINESSES FOR THE DURATION OF THE PROJECT
 3. SEE TRAFFIC ENGINEERING PLANS FOR CONSTRUCTION OF PEDESTRIAN SIGNAL AND ASSOCIATED ITEMS
 4. CONTRACTOR TO SELECT MANUFACTURER FOR CONCRETE COLORING PRODUCTS PER THE RELEVANT CONTRACT SPECIAL PROVISION AND SEEK ENGINEER'S APPROVAL ON COLOR CHOICE PRIOR TO PRODUCTION

PROPOSED DECORATIVE CONCRETE PLAZA

CONSTRUCTION QUANTITIES:

335	FT	VALLEY GUTTER, CONC
5,000	SFT	SIDEWALK, CONC, 6 INCH
12,500	SFT	SIDEWALK, CONC, 6 INCH, DECORATIVE
340	SYD	AGGREGATE BASE, 6 INCH
340	SYD	CONC BASE CSE, NONREINF, 6 INCH
1,160	FT	CURB, CONC, DET E4
30	FT	CURB, CONC, DET CITY OF DETROIT TYPE IV, MODIFIED
10	EA	DR STRUCTURE COVER, ADJ, CASE 1
5	EA	WATER SHUTOFF, ADJ, CASE 1
6	EA	GATE BOX, ADJ, CASE 1
90	FT	DETECTABLE WARNING SURFACE
1600	SFT	SIDEWALK RAMP, CONC, 6 INCH
165	FT	CURB RAMP OPENING, CONC
9	EA	BOLLARD, DECORATIVE STEEL, REMOVABLE

PROPOSED CONC. CURB
 DET E4, 6" FACE EXPOSURE,
 PER MDOT STANDARD PLAN
 R-30-G (TYP.)



PROPOSED SIDEWALK RAMP
TYPE M PER MDOT STANDARD
PLAN R-28-J

PROPOSED SIDEWALK RAMP
TYPE F PER MDOT STANDARD
PLAN R-28-J (TYP.)

PROPOSED SIDEWALK RAMP
TYPE RF PER MDOT STANDARD
PLAN R-28-J



GENERAL SERVICES DEPARTMENT
LANDSCAPE DESIGN UNIT
18100 MEYERS RD, UPPER LEVEL
DETROIT, MICHIGAN 48226
(313) 628-0918 Phone
(313) 628-0915 Fax

PREPARED BY:
LANDSCAPE DESIGN UNIT

DRAWN BY: FC DATE: 01/29/2018
CHECKED BY: TK/LA/TS/AHS DATE:
APPROVED BY: L. ARAKELOV / AHS

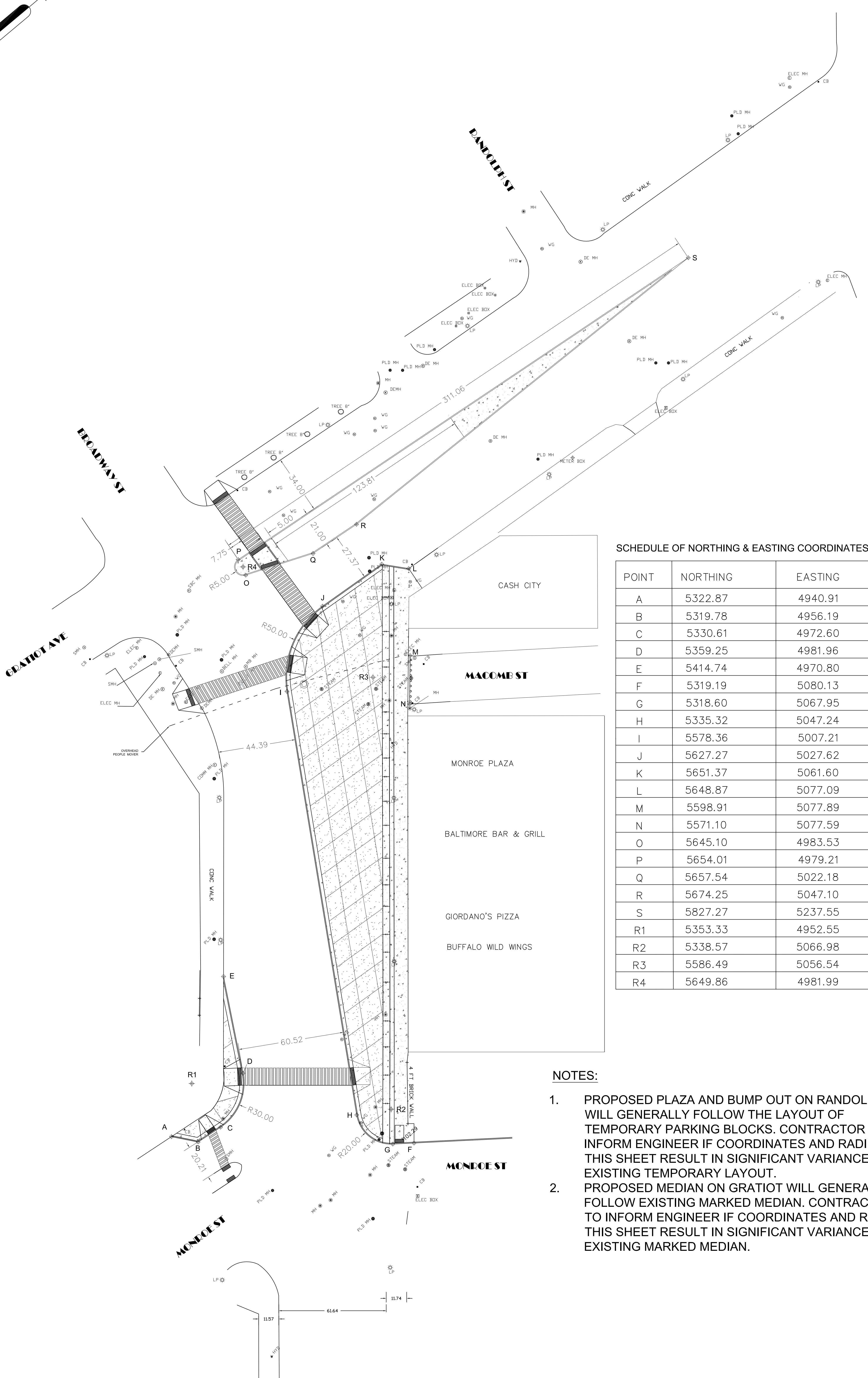
SHEET TITLE:
**CONSTRUCTION
PLAN (2)**

PROJECT:
**RANDOLPH AND GRATIOT
PLAZA**

N

SHEET NO. 5

SCALE:
3/4" = 1' - 0"

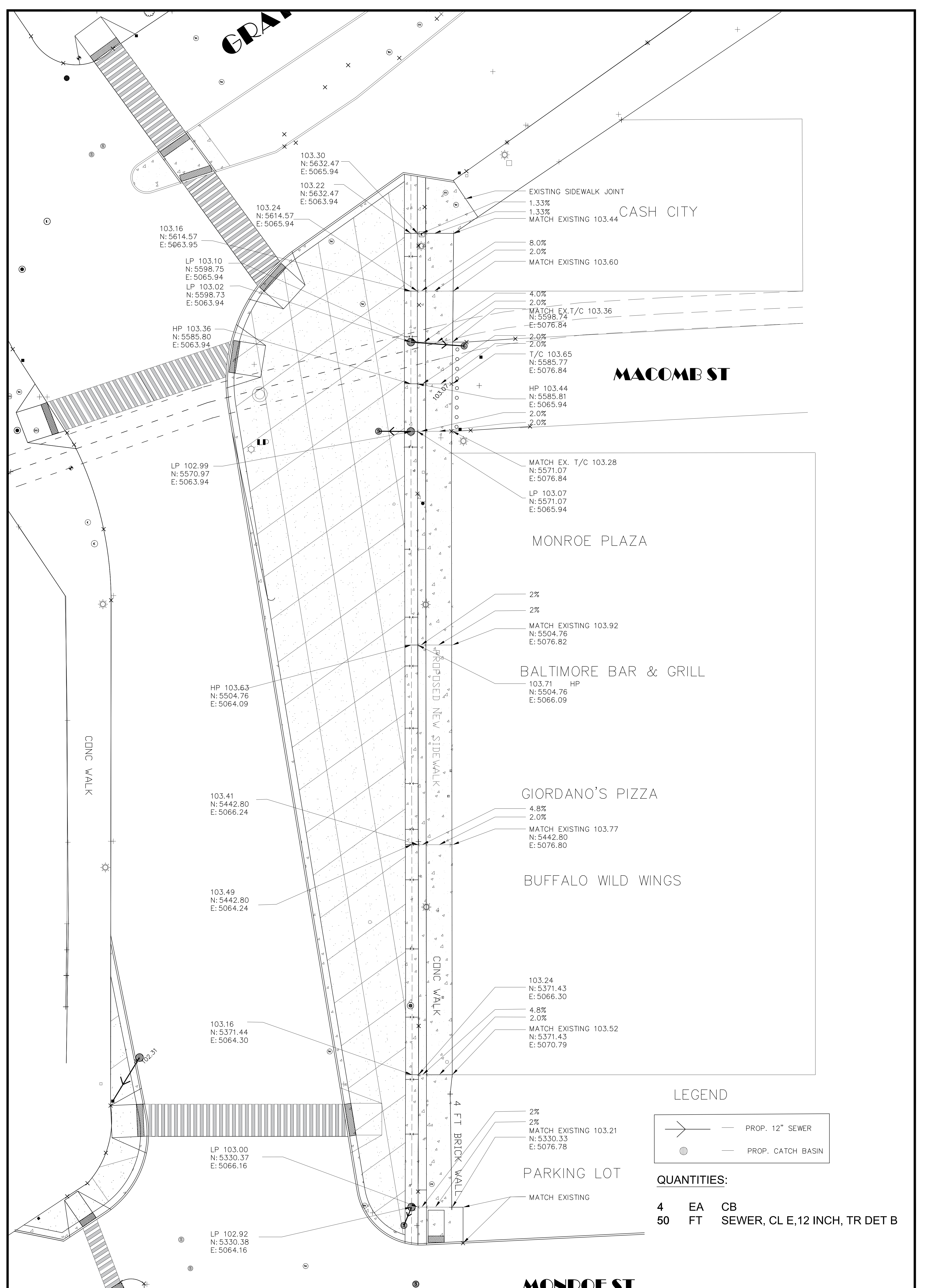


SCHEDULE OF NORTHING & EASTING COORDINATES

POINT	NORTHING	EASTING
A	5322.87	4940.91
B	5319.78	4956.19
C	5330.61	4972.60
D	5359.25	4981.96
E	5414.74	4970.80
F	5319.19	5080.13
G	5318.60	5067.95
H	5335.32	5047.24
I	5578.36	5007.21
J	5627.27	5027.62
K	5651.37	5061.60
L	5648.87	5077.09
M	5598.91	5077.89
N	5571.10	5077.59
O	5645.10	4983.53
P	5654.01	4979.21
Q	5657.54	5022.18
R	5674.25	5047.10
S	5827.27	5237.55
R1	5353.33	4952.55
R2	5338.57	5066.98
R3	5586.49	5056.54
R4	5649.86	4981.99

NOTES:

1. PROPOSED PLAZA AND BUMP OUT ON RANDOLPH WILL GENERALLY FOLLOW THE LAYOUT OF TEMPORARY PARKING BLOCKS. CONTRACTOR TO INFORM ENGINEER IF COORDINATES AND RADII IN THIS SHEET RESULT IN SIGNIFICANT VARIANCE FROM EXISTING TEMPORARY LAYOUT.
2. PROPOSED MEDIAN ON GRATIOT WILL GENERALLY FOLLOW EXISTING MARKED MEDIAN. CONTRACTOR TO INFORM ENGINEER IF COORDINATES AND RADII IN THIS SHEET RESULT IN SIGNIFICANT VARIANCE FROM EXISTING MARKED MEDIAN.



LEGEND

	PROP. 12" SEWER
	PROP. CATCH BASIN

QUANTITIES:

4	EA	CB
50	FT	SEWER, CL E, 12 INCH, TR DET B



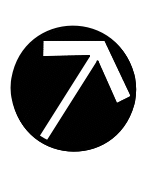
GENERAL SERVICES DEPARTMENT
LANDSCAPE DESIGN UNIT
 18100 MEYERS RD, UPPER LEVEL
 DETROIT, MICHIGAN 48226
 (313) 628-0918 Phone
 (313) 628-0915 Fax

PREPARED BY:
LANDSCAPE DESIGN UNIT

DRAWN BY: FC	DATE: 02/15/2018
CHECKED BY: TK/LA/TS/AHS	DATE:
APPROVED BY: L. ARAKELOV / AHS	

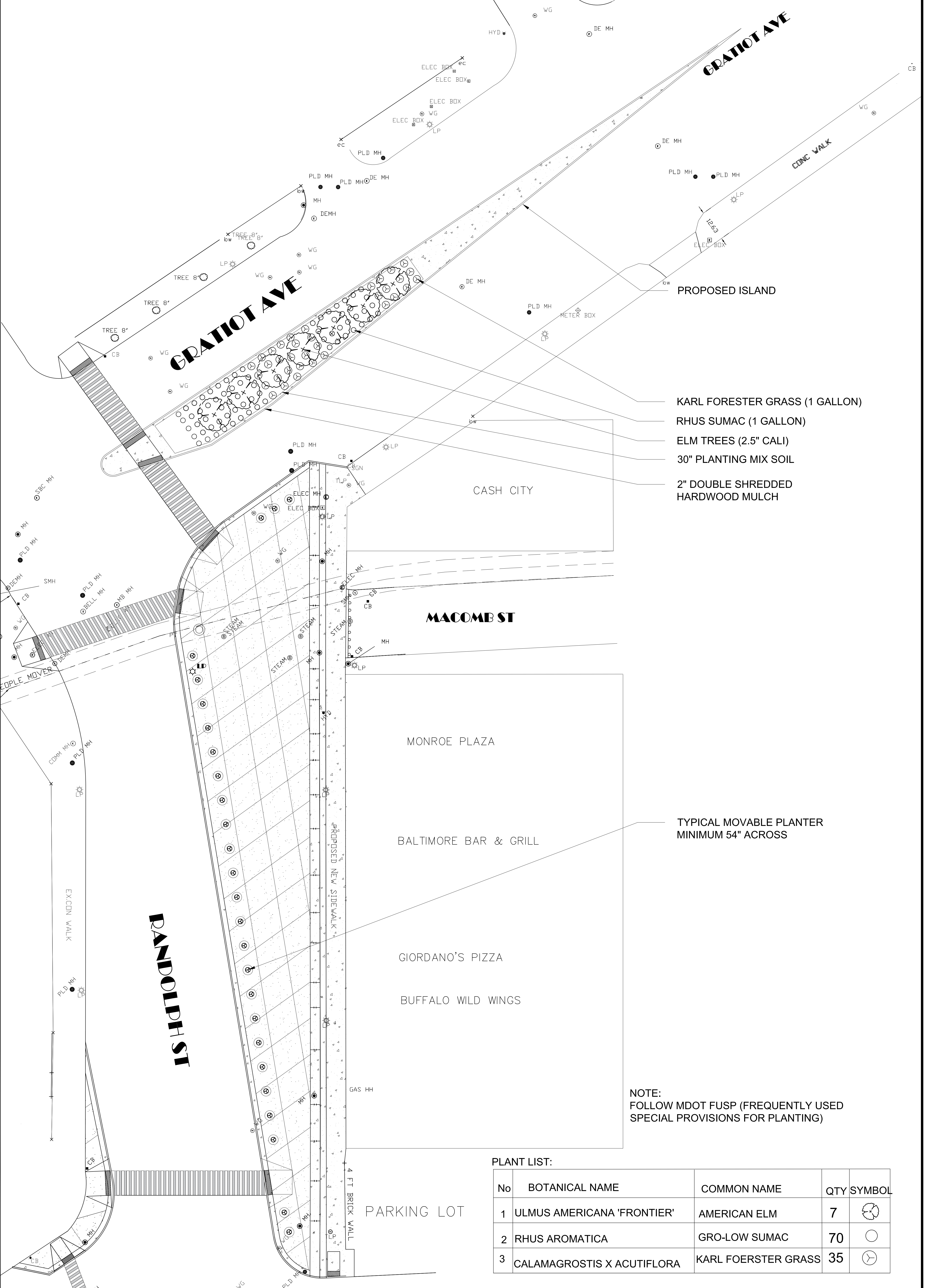
SHEET TITLE:
GRADING & DRAINAGE PLAN

PROJECT:
RANDOLPH AND GRATIOT PLAZA

N 

SCALE:
 1" = 1' - 0"

SHEET NO. 7



- KARL FORESTER GRASS (1 GALLON)
- RHUS SUMAC (1 GALLON)
- ELM TREES (2.5" CALI)
- 30" PLANTING MIX SOIL
- 2" DOUBLE SHREDDED HARDWOOD MULCH

— TYPICAL MOVABLE PLANTER
MINIMUM 54" ACROSS

NOTE:
FOLLOW MDOT FUSP (FREQUENTLY USED
SPECIAL PROVISIONS FOR PLANTING)

PLANT LIST:

No	BOTANICAL NAME	COMMON NAME	QTY	SYMBOL
1	ULMUS AMERICANA 'FRONTIER'	AMERICAN ELM	7	⊗
2	RHUS AROMATICA	GRO-LOW SUMAC	70	○
3	CALAMAGROSTIS X ACUTIFLORA	KARL FOERSTER GRASS	35	⊙

GSD
CITY OF DETROIT
GENERAL SERVICES DEPARTMENT
"Working Smart to Live Better"


GENERAL SERVICES DEPARTMENT
LANDSCAPE DESIGN UNIT
18100 MEYERS RD, UPPER LEVEL
DETROIT, MICHIGAN 48226
(313) 628-0918 Phone
(313) 628-0915 Fax

PREPARED BY:
LANDSCAPE DESIGN UNIT

DRAWN BY: FC DATE: 02/13/2018
CHECKED BY: TK/LA/TS/AHS DATE:
APPROVED BY: L. ARAKELOV / AHS

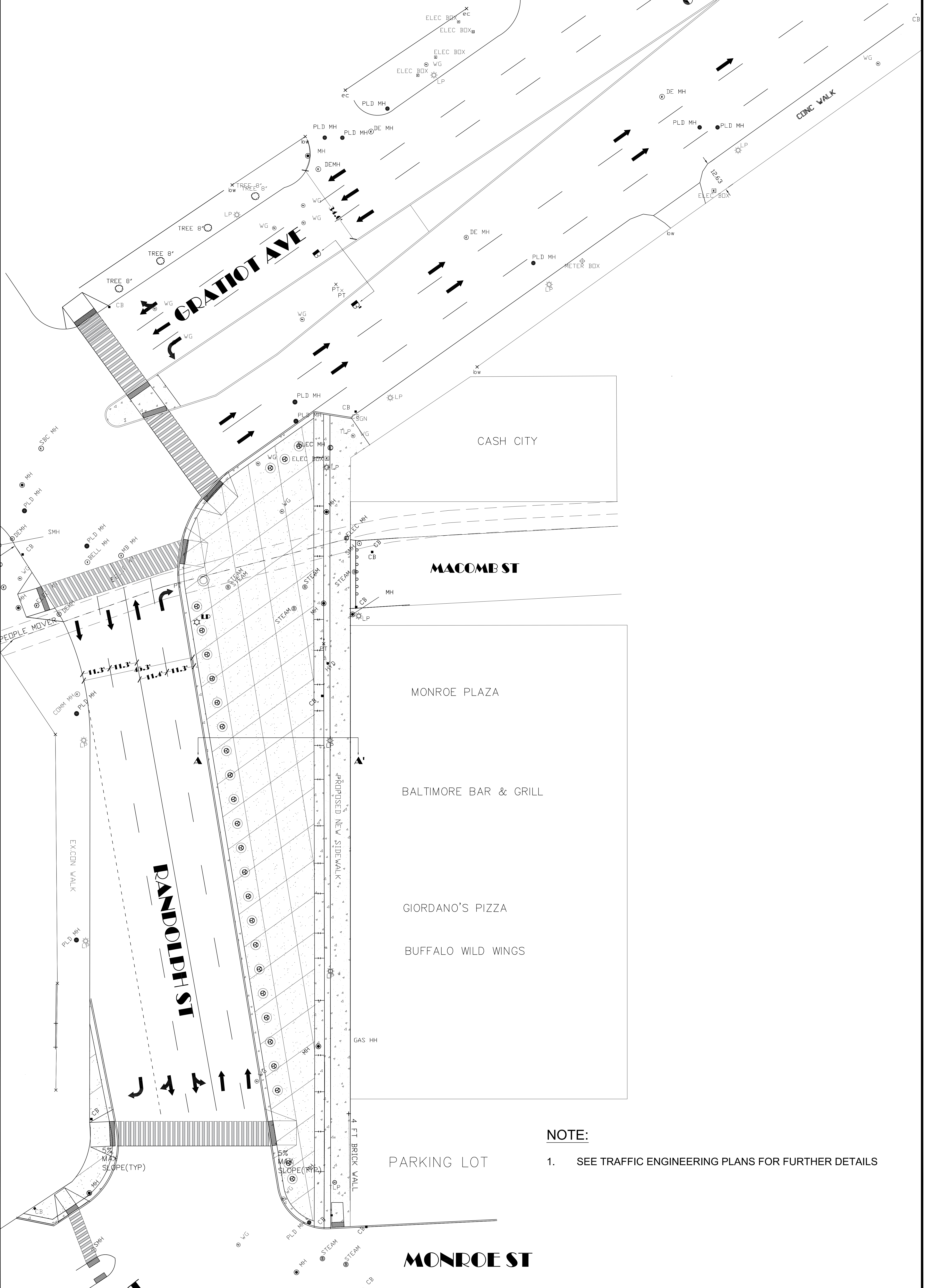
SHEET TITLE:
PLANTING PLAN

PROJECT:
RANDOLPH AND GRATIOT PLAZA

N 

SHEET NO. 8

SCALE:
3/4" = 1' - 0"



NOTE:
 1. SEE TRAFFIC ENGINEERING PLANS FOR FURTHER DETAILS




GENERAL SERVICES DEPARTMENT
 LANDSCAPE DESIGN UNIT
 18100 MEYERS RD, UPPER LEVEL
 DETROIT, MICHIGAN 48226
 (313) 628-0918 Phone
 (313) 628-0915 Fax

PREPARED BY:
 LANDSCAPE DESIGN UNIT

DRAWN BY: FC **DATE:** 02/13/2018
CHECKED BY: TK/LA/TS/AHS **DATE:**
APPROVED BY: L. ARAKELOV / AHS

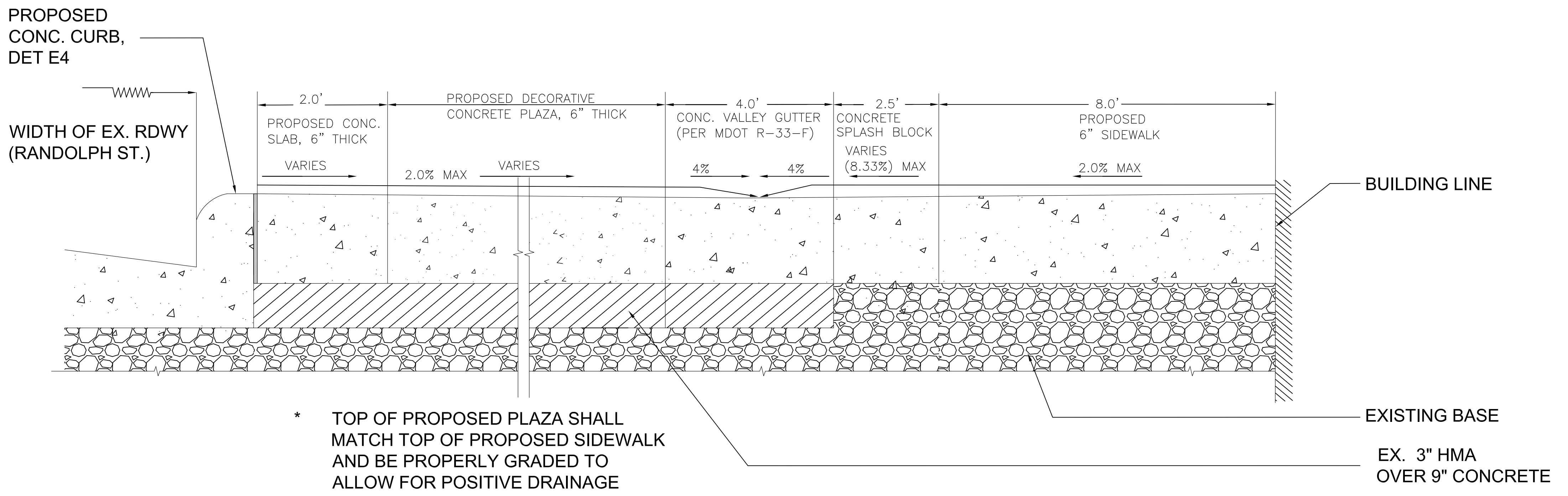
SHEET TITLE:
 TRAFFIC FLOW PLAN

PROJECT:
 RANDOLPH AND GRATIOT PLAZA

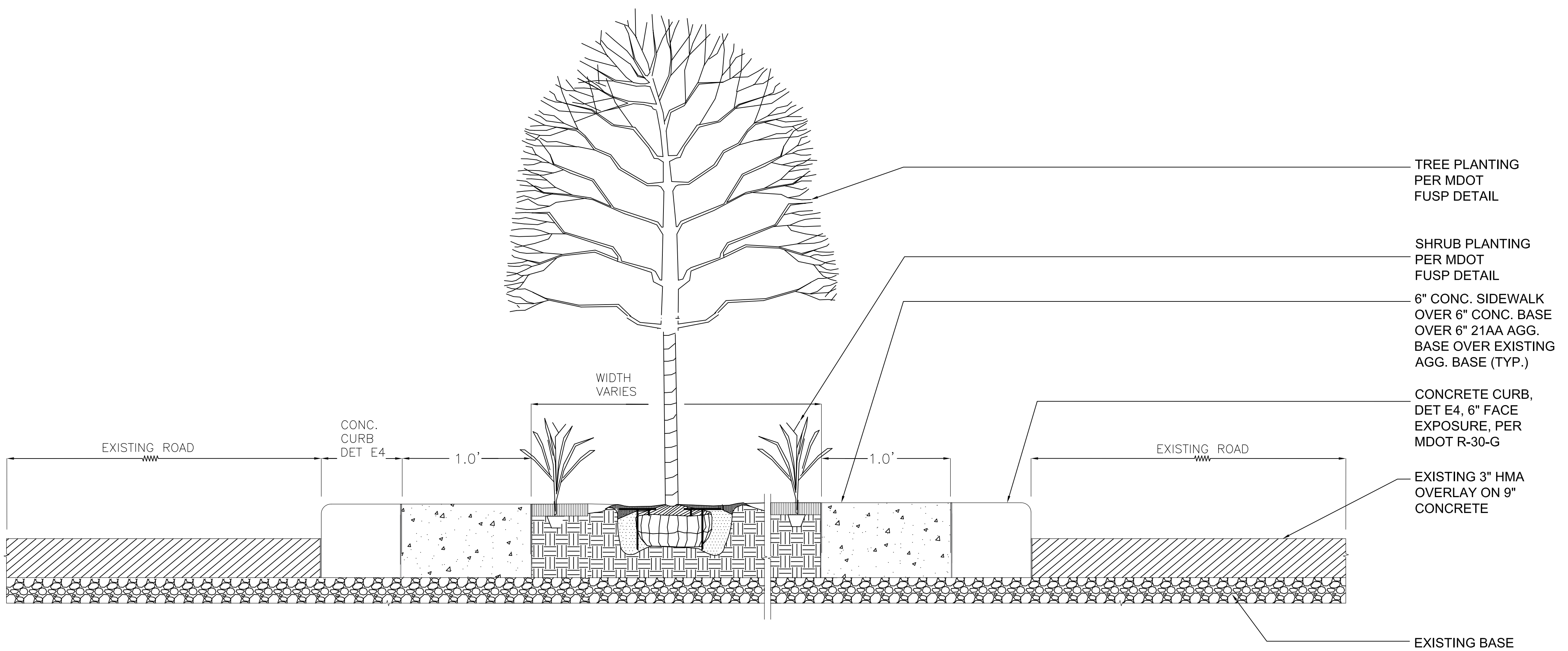
N 

SHEET NO. 9

SCALE:
 3/4" = 1' - 0"



SECTION A A'



SECTION B B'



GENERAL SERVICES DEPARTMENT
LANDSCAPE DESIGN UNIT
18100 MEYERS RD, UPPER LEVEL
DETROIT, MICHIGAN 48226
(313) 628-0918 Phone
(313) 628-0915 Fax

PREPARED BY:
LANDSCAPE DESIGN UNIT

DRAWN BY: FC DATE: 02/13/2018
CHECKED BY: TK/LA/TS/AHS DATE:
APPROVED BY: L. ARAKELOV/AHS

SHEET TITLE:

SECTION
DETAILS

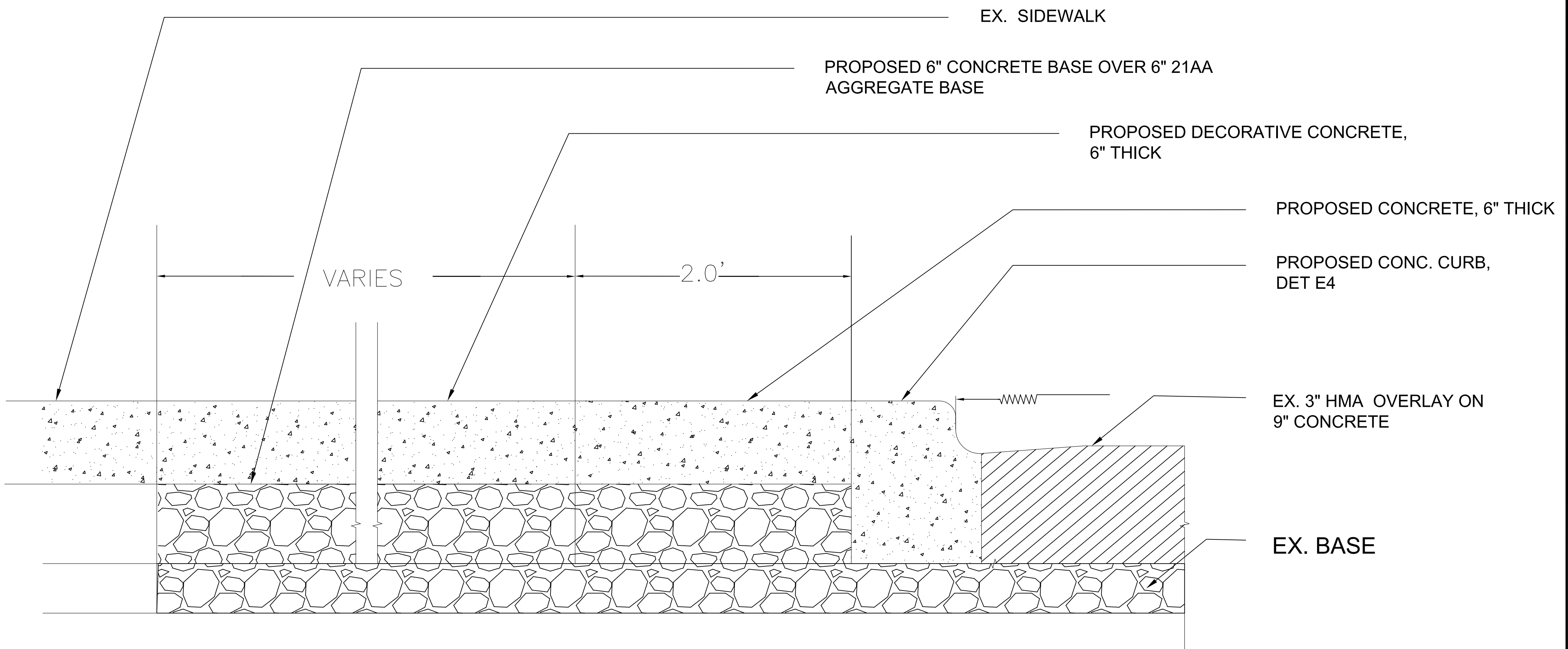
PROJECT:

RANDOLPH AND GRATIOT
PLAZA

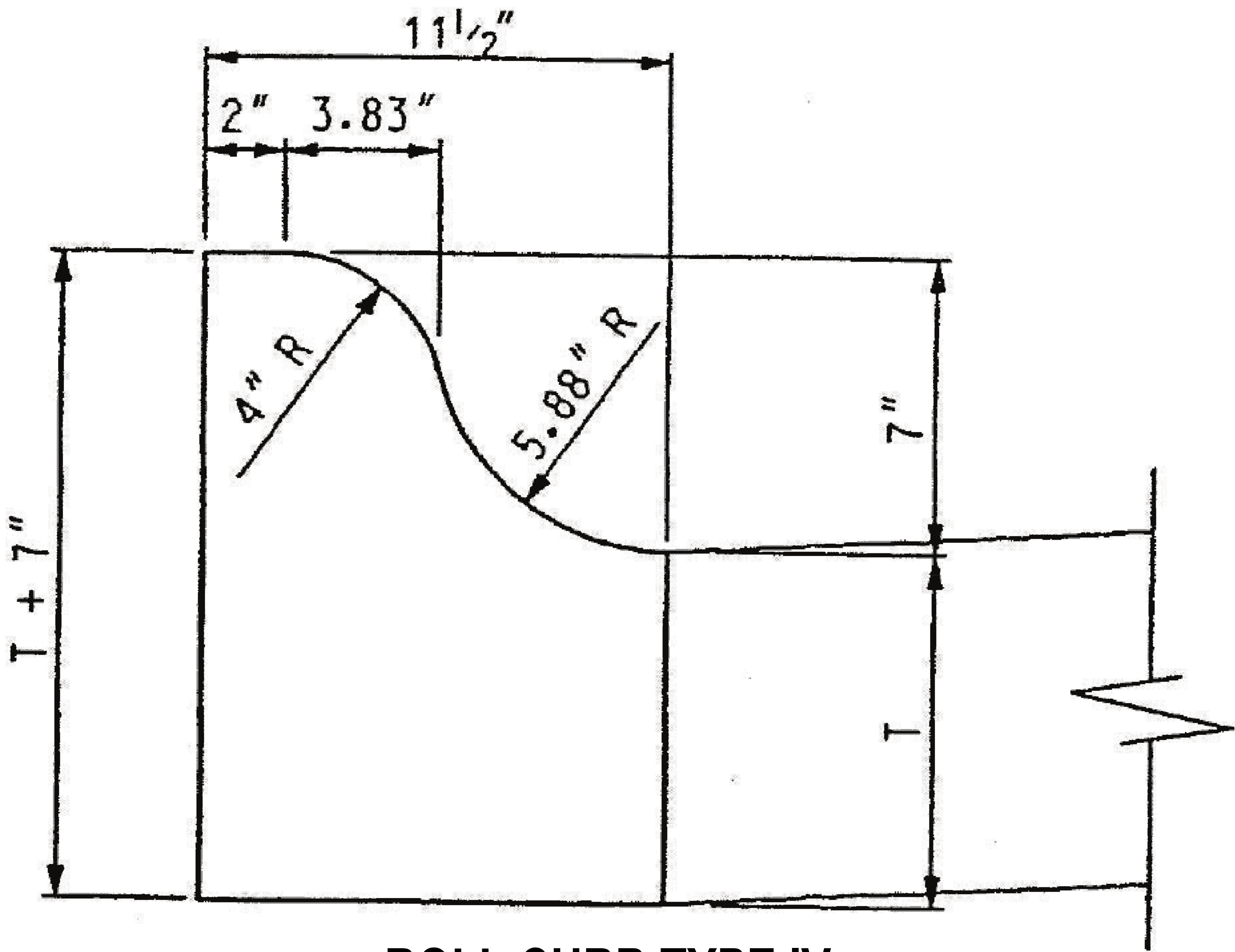


SHEET NO. 10

SCALE:
N.T.S



SECTION C C'



ROLL CURB TYPE IV