

THE IMPROVEMENTS COVERED BY THESE PLANS SHALL BE DONE IN ACCORDANCE WITH THE MICHIGAN DEPARTMENT OF TRANSPORTATION 2012 STANDARD SPECIFICATIONS FOR CONSTRUCTION AND THE CITY OF DETROIT DEPARTMENT OF PUBLIC WORKS CITY ENGINEERING DIVISION STANDARD SPECIFICATIONS FOR PAVING AND RELATED CONSTRUCTION (MARCH 2009)

# CITY OF DETROIT DEPARTMENT OF PUBLIC WORKS FINAL RECORD DRAWINGS **BAGLEY STREETScape** 24TH STREET TO WEST FISHER FREEWAY SERVICE DRIVE



ROAD	YEAR	TRAFFIC DATA			SPEED DATA		LIMITS
		ADT	DHV	COMM	DESIGN	POSTED	
BAGLEY ST	1998	1530	--	--	25	25	24TH ST TO W FISHER FWY SERVICE DR
W FISHER FWY SERVICE DR	2018	2150	250	225	25	25	NORTH OF BAGLEY ST

**NOTE:**  
THESE SHEETS ARE A COPY OF THE DETAILED ENGINEERING PLANS AS PROVIDED BY THE PROJECT OWNER. THE SOLE PURPOSE OF THESE PLANS IS FOR ILLUSTRATION OF THE RESULTS OF AN AS-BUILT SURVEY OF THE UTILITY INFRASTRUCTURE AND ROADWAY AS COMPLETED BY ALPINE ENGINEERING, INC. ALPINE ENGINEERING, INC. ACKNOWLEDGES NO CONTROL OR RESPONSIBILITY FOR THE DESIGN OR CONSTRUCTION METHODS AS ILLUSTRATED ON THE ORIGINAL DESIGN PLAN. ANY QUESTIONS REGARDING THE DESIGN OF THIS PROJECT SHOULD BE DIRECTED TO THE OWNER AND/OR THE DESIGN ENGINEER LISTED ON THE ORIGINAL PLAN.



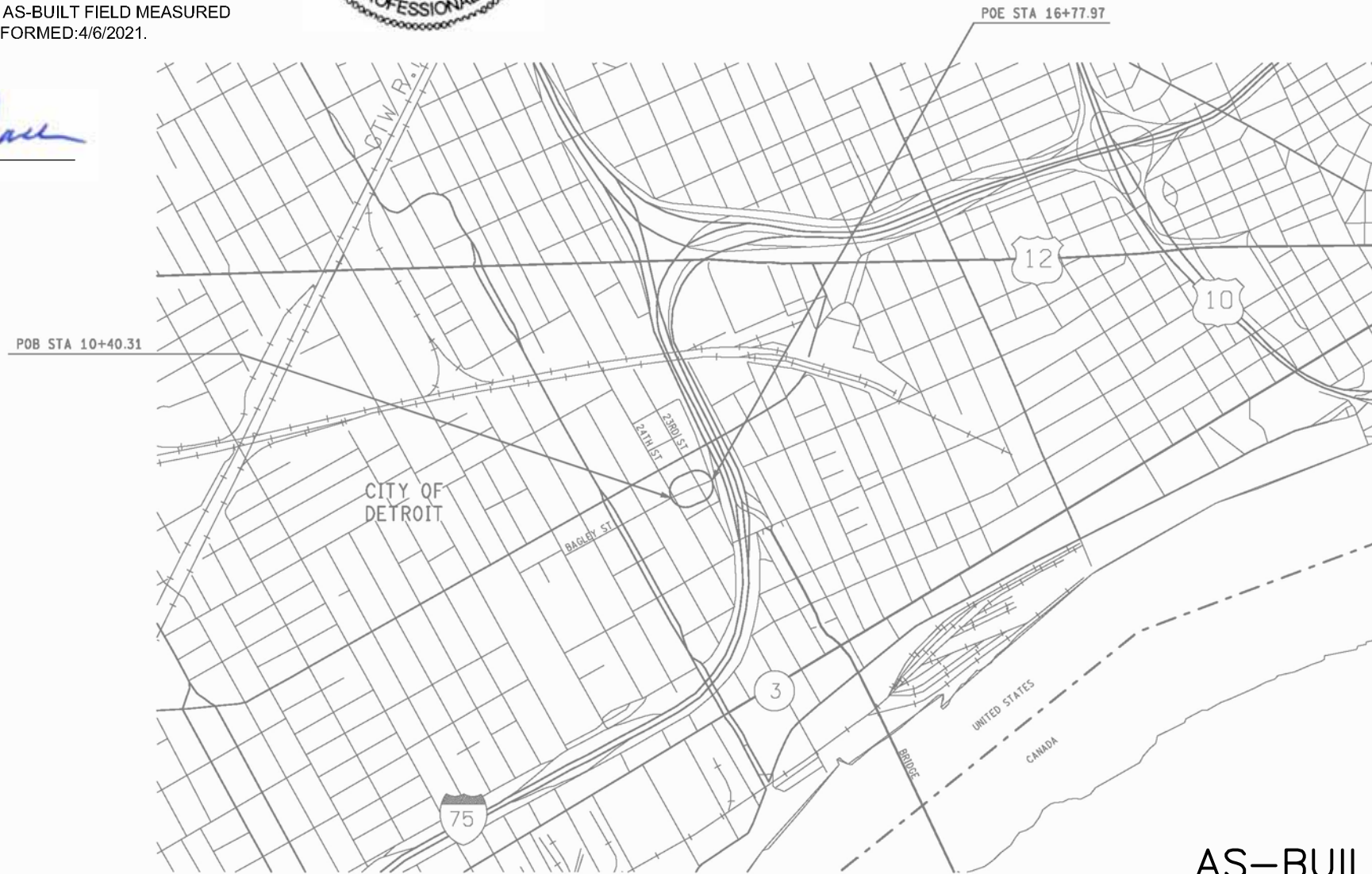
PROPOSED VALUES WITH LINE STRIKETHROUGH AND ADJACENT ELEVATIONS, SLOPES, AND DISTANCES ARE AS-BUILT FIELD MEASURED VALUES. FIELD MEASUREMENTS WERE PERFORMED: 4/6/2021.

ALPINE ENGINEERING INC. JOB # 19-437

*Ginger Michalski-Wallace*

GINGER MICHALSKI-WALLACE  
PROFESSIONAL SURVEYOR NO. 47964

**ALPINE ENGINEERING, INC.**  
CIVIL ENGINEERS & LAND SURVEYORS  
46892 WEST ROAD  
SUITE 109  
NOVI, MICHIGAN 48377  
(248) 926-3701 (BUS)  
(248) 926-3765 (FAX)



THESE PLANS WERE PREPARED BY:

**wsp**

CHRISTOS D. MELISTAS, P.E.      DATE

WSP MICHIGAN, INC.  
500 GRISWOLD ST, SUITE 2600  
DETROIT, MI 48226  
313-963-5760

---

**APPROVALS**

RECOMMENDED FOR APPROVAL BY:

RICHARD DOHERTY, P.E. - CITY ENGINEER      DATE

**CITY OF DETROIT**

---

MILES: 0.12  
CONTRACT FOR:  
FULL DEPTH CONCRETE REPLACEMENT, BRICK PAVERS SURFACE, DECORATIVE CONCRETE TREATMENTS, DRAINAGE STRUCTURE REHABILITATION AND ADDITIONAL DRAINAGE STRUCTURES, HARDSCAPE, SIGNAGE, PAVEMENT MARKINGS, SITE FURNISHINGS, NEW STREET LIGHTING AND STRAND LIGHTING, ADA ACCESSIBILITY, AND LANDSCAPING ON BAGLEY STREET IN MEXICANTOWN.

TITLE SHEET		DRAWING	SHEET
BAGLEY STREETScape		BAG TITLE 001	1

p. 94

FINAL ROW PLAN REVISIONS (SUBMITTAL DATE: )								DATE: 05/08/19		JN: PW-7007 BAGLEY STREETScape	
NO.	DATE	AUTH	DESCRIPTION	NO.	DATE	AUTH	DESCRIPTION				

**PUBLIC UTILITIES**

The existing utilities listed below and shown on these plans represent the best information available as obtained on our surveys. This information does not relieve the contractor of the responsibility to be satisfied as to it's accuracy and the location of existing utilities.

Name Of Owner	Type Of Utility
AT&T 17651 Michigan Ave Dearborn, MI 48126 Joe Raczak Legal Mandate Engineer (313) 240-5314 JR1983@att.com or Mark Braham OSP Engineer - Metro South (313) 240-5390 MB6352@att.com	Telephone For Adjusting Frames & Covers
City of Detroit Detroit Fire Department 1301 3rd Street Detroit, MI 48226 General: (313) 596-2900 Fax: (313) 224-4128 communityrelations@detroitmi.gov	KNOX Boxes & Fire Hydrants
City of Detroit Detroit Police Department 1301 3rd Street Detroit, MI 48226 General: (313) 596-2200 Fax: (313)596-1450 publicinfo@detroitmi.gov	Police Call Boxes
City of Detroit Detroit Water & Sewerage Department Contract Services Facility 6425 Huber Detroit, MI 48211 General: (313) 267-4863 Fax: (313) 842-6480	Water Mains & Sewers
City of Detroit Public Lighting Authority 65 Cadillac Square, Suite 3100 Detroit, MI 48226 (313) 324-8290, ext. 216 Mohamed Abbas abbasm@detroitmi.gov	Street Lighting & Traffic Signals
City of Detroit Traffic Engineering, D.P.W. 2633 Michigan Avenue Detroit, MI 48207 General: (313) 224-1610 Fax: (313)224-1304 Prasad Nannapaneni (313) 628-5603 prasadn@detroitmi.gov Sunny Jacobs (313) 628-5604 sunjac@detroitmi.gov	Pavement Markings, Signs & Traffic Signals
Comcast Attn: Robert Seaney (c/o John Rieberger) Phone: (419) 874-9262 ext. 103 RSeaney@teamsigma.com	Cable

**PUBLIC UTILITIES (CONT.)**

Name Of Owner	Type Of Utility
Detroit Thermal LLC 3575 E Palmer St Detroit, MI 48201 Ed LaRosa (313) 921-1922 Fax: (313) 921-1972	Steam Lines
DTE One Energy Plaza Detroit, MI 48226 Gas Leak: 1-800-947-5000 Electrical: 1-800-477-4747	Electric & Gas
Great Lakes Water Authority Attn: Dale Echols Phone: (313) 267-4857 dale.echols@glwater.org	Water
Sign Shop 2425 Fenkell Detroit, MI 48238 Willie Riley (313) 628-2923 Fax: (313) 628-4966	Sign Removals & Installations

**NOTES APPLYING TO STANDARD PLANS**

Where the following items are called for on plans, they are to be constructed according to the standard plan given below opposite each item unless otherwise indicated.

Title	Plan No.
<b>CITY OF DETROIT STANDARDS</b>	
TYPICAL JOINT LAYOUT FOR NON-REINFORCED CONCRETE PAVEMENT	C-4379
STANDARD CURB DETAILS	C-4380
DETAIL OF ALLEY RETURN AND DRIVE APPROACH	C-4384
RECONSTRUCTION OF EXISTING SUMP MANHOLES AND NEW CATCH BASIN INSTALLATIONS	C-4390
FLAT TYPE GRATE AND FRAME	C-4392
SIDEWALK JOINTING STANDARD	C-4462
PORTABLE BARRICADES	C-4552
BARRICADES AND LIGHTED ARROWS	C-4730
CATCH BASINS "A" AND "B" AND FLAT GRATE AND FRAME	C-5028
SIDEWALK RAMP AND DETECTABLE WARNING DETAILS (R-28-I WITH CITY OF DETROIT THICKNESS AMENDMENT)	
CATCH BASIN 5000 M4 GRATE	
CATCH BASIN 5000Z4 5000M4 ASSEMBLY	
CATCH BASIN 5000 ASSEMBLY	
A.D.A. CATCH BASIN 5000M5 GRATE	
A.D.A. CATCH BASIN 5000Z4 5000M5 ASSEMBLY	
<b>DETROIT WATER AND SEWERAGE DEPARTMENT (DWSD) STANDARDS</b>	
THRUST BLOCK, VERTICAL BEND (TRADITIONAL DWSD SIZING)	331413-04
THRUST BLOCK, VERTICAL BEND (TRADITIONAL DWSD SIZING)	331413-05
HYDRANT, 6 INCH INSTALLATION STRAIGHT AWAY	331419-03
<b>MICHIGAN DEPARTMENT OF TRANSPORATION (MDOT) STANDARDS</b>	
<b>ROAD</b>	
DRAINAGE STRUCTURES	R-1-G *
DRIVEWAY OPENINGS & APPROACHES AND CONCRETE SIDEWALK	R-29-I
CONCRETE CURB AND CONCRETE CURB & GUTTER	R-30-G

Title	Plan No.
<b>MICHIGAN DEPARTMENT OF TRANSPORATION (MDOT) STANDARDS</b>	
<b>ROAD (CONT.)</b>	
ISOLATION JOINT DETAILS	R-37-B
TRANSVERSE PAVEMENT JOINTS (PLAIN CONCRETE PAVEMENT)	R-39-K
LOAD TRANSFER ASSEMBLIES FOR TRANSVERSE JOINTS	R-40-H
LONGITUDINAL PAVEMENT JOINTS	R-41-H
TYPICAL JOINT LAYOUTS FOR CONCRETE PAVEMENT	R-42-F
LOCATION OF TRANSVERSE JOINTS IN PLAIN CONCRETE PAVEMENT	R-43-I
CONCRETE PAVEMENT REPAIR	R-44-F
GRANULAR BLANKET, UNDERDRAINS, OUTLET ENDINGS FOR UNDERDRAINS, AND SEWER BULKHEADS	R-80-E
SOIL EROSION & SEDIMENTATION CONTROL MEASURES	R-96-E
<b>PAVEMENT MARKINGS</b>	
PAVEMENT ARROW AND MESSAGE DETAILS	PAVE-900-F
LONGITUDINAL LINE TYPES AND PLACEMENT	PAVE-905-D
INTERSECTION, STOP BAR AND CROSSWALK MARKINGS	PAVE-945-C
<b>SIGNING</b>	
STANDARD SIGN INSTALLATIONS	SIGN-100-G
PLACEMENT OF D3-1 SIGNS ABOVE R1-1	SIGN-140-A
SIGN SUPPORT SELECTION CHARTS	SIGN-150-D
STEEL POSTS	SIGN-200-D
MISCELLANEOUS SIGN CONNECTION DETAILS	SIGN-740-B
<b>WORK ZONE DEVICES</b>	
GROUND DRIVEN SIGN SUPPORTS FOR TEMP SIGNS	WZD-100-A *
TEMPORARY TRAFFIC CONTROL DEVICES	WZD-125-E *

\* Denotes Special Detail

\* DENOTES A SHEET THAT CONTAINS ASBUILT DATA

**SHEET INDEX**

* Title Sheet	1
* Project Information Sheet	2
Site Plan	3
Existing & Proposed Typical Sections	4-6
Miscellaneous Detail Sheets	7-10
Note Sheet	11
Miscellaneous Quantities & Estimates Sheet	12
Legend Sheets	13-15
Survey Information Sheet	16
Alignment Sheet	17
* Removal, Construction & Drainage Sheets	20, 23 & 24 <del>18-24</del>
* Grading Sheets	25-28
Maintaining Traffic Details & Detour Plans	29-36
Landscape Sheets and Details	37-40
Amenities Sheets and Details	41-44
Signing Sheets	45-46
Pavement Markings Sheets	47-48
Soil Boring Log Sheet	49
Special Details	50-54
* Lighting Plan Sheets	59 <del>55-95</del>

**FUNDING CATEGORIES**

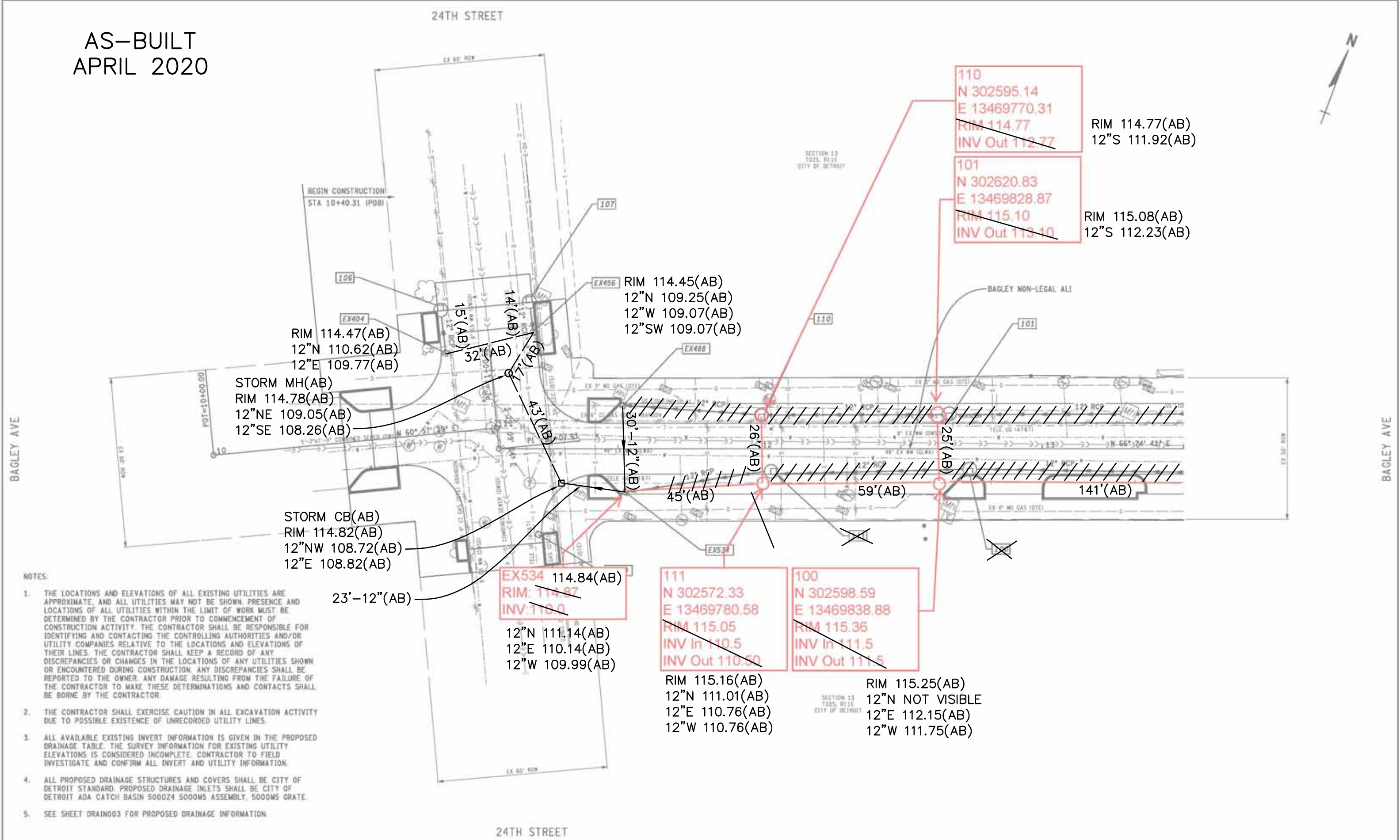
**Project Description**  
Category 0001 = Local Municipality

5/14/2019 8:52 AM

Detroit

DET-19090002

AS-BUILT  
APRIL 2020



- NOTES:
1. THE LOCATIONS AND ELEVATIONS OF ALL EXISTING UTILITIES ARE APPROXIMATE, AND ALL UTILITIES MAY NOT BE SHOWN. PRESENCE AND LOCATIONS OF ALL UTILITIES WITHIN THE LIMIT OF WORK MUST BE DETERMINED BY THE CONTRACTOR PRIOR TO COMMENCEMENT OF CONSTRUCTION ACTIVITY. THE CONTRACTOR SHALL BE RESPONSIBLE FOR IDENTIFYING AND CONTACTING THE CONTROLLING AUTHORITIES AND/OR UTILITY COMPANIES RELATIVE TO THE LOCATIONS AND ELEVATIONS OF THEIR LINES. THE CONTRACTOR SHALL KEEP A RECORD OF ANY DISCREPANCIES OR CHANGES IN THE LOCATIONS OF ANY UTILITIES SHOWN OR ENCOUNTERED DURING CONSTRUCTION. ANY DISCREPANCIES SHALL BE REPORTED TO THE OWNER. ANY DAMAGE RESULTING FROM THE FAILURE OF THE CONTRACTOR TO MAKE THESE DETERMINATIONS AND CONTACTS SHALL BE BORNE BY THE CONTRACTOR.
  2. THE CONTRACTOR SHALL EXERCISE CAUTION IN ALL EXCAVATION ACTIVITY DUE TO POSSIBLE EXISTENCE OF UNRECORDED UTILITY LINES.
  3. ALL AVAILABLE EXISTING INVERT INFORMATION IS GIVEN IN THE PROPOSED DRAINAGE TABLE. THE SURVEY INFORMATION FOR EXISTING UTILITY ELEVATIONS IS CONSIDERED INCOMPLETE. CONTRACTOR TO FIELD INVESTIGATE AND CONFIRM ALL INVERT AND UTILITY INFORMATION.
  4. ALL PROPOSED DRAINAGE STRUCTURES AND COVERS SHALL BE CITY OF DETROIT STANDARD. PROPOSED DRAINAGE INLETS SHALL BE CITY OF DETROIT ADA CATCH BASIN 5000Z4 5000M5 ASSEMBLY, 5000M5 GRATE.
  5. SEE SHEET DRAIN003 FOR PROPOSED DRAINAGE INFORMATION.

FINAL ROW PLAN REVISIONS		SUBMITTAL DATE:	
NO.	DATE	NO.	DATE



DATE: 05/08/2019  
FILE:

JN: PW-7007  
BAGLEY STREETSCAPE

DRAINAGE SHEET		DRAWING	SHEET
BAGLEY STREETSCAPE		BAG DRAIN 001	20
STA 10+40.31 (POB) TO STA 13+50			

AS-BUILT  
JANUARY 2020

23RD STREET

W FISHER SERVICE DRIVE



SECTION 13  
T025, R11E  
CITY OF DETROIT

SECTION 13  
T025, R11E  
CITY OF DETROIT

103  
N 302674.58  
E 13469951.16  
RIM 115.71  
INV Out 113.71

102  
N 302650.23  
E 13469961.38  
RIM 115.94  
INV In 113.27  
INV Out 113.00

EX1208  
RIM:115.50  
Inv In: 110.50  
Inv Out: 110.50

EX1289  
RIM:115.30  
Inv In:110.00  
Ex Inv Out:108.35

EX119  
RIM:115.27  
Inv Out: 111.00

RIM 115.23(AB)  
12"W 112.43(AB)

RIM 115.84(AB)  
12"N 113.04(AB)  
12"W 113.04(AB)

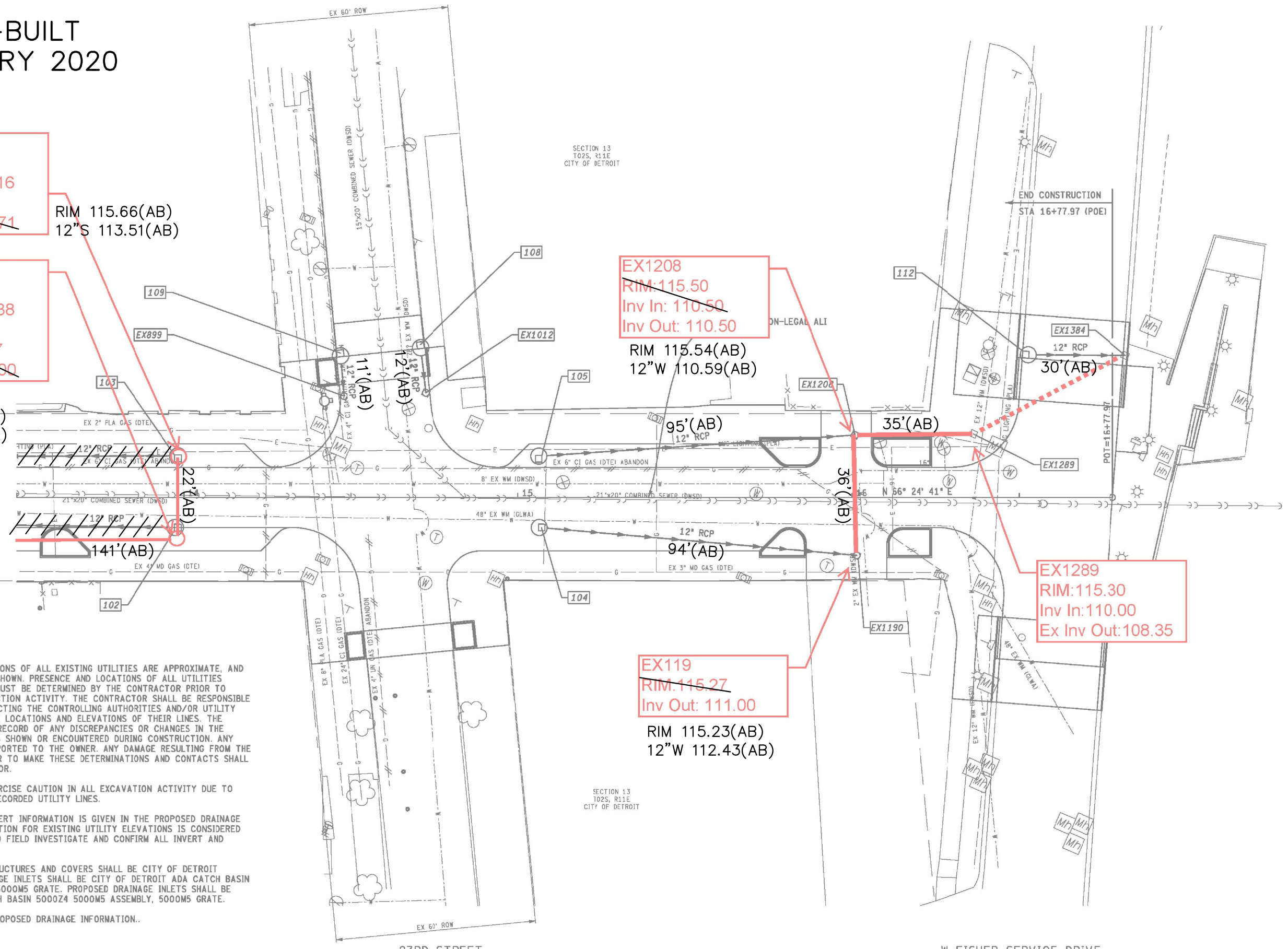
RIM 115.66(AB)  
12"S 113.51(AB)

RIM 115.54(AB)  
12"W 110.59(AB)

BAGLEY AVE

BAGLEY AVE

- NOTES:
1. THE LOCATIONS AND ELEVATIONS OF ALL EXISTING UTILITIES ARE APPROXIMATE, AND ALL UTILITIES MAY NOT BE SHOWN. PRESENCE AND LOCATIONS OF ALL UTILITIES WITHIN THE LIMIT OF WORK MUST BE DETERMINED BY THE CONTRACTOR PRIOR TO COMMENCEMENT OF CONSTRUCTION ACTIVITY. THE CONTRACTOR SHALL BE RESPONSIBLE FOR IDENTIFYING AND CONTACTING THE CONTROLLING AUTHORITIES AND/OR UTILITY COMPANIES RELATIVE TO THE LOCATIONS AND ELEVATIONS OF THEIR LINES. THE CONTRACTOR SHALL KEEP A RECORD OF ANY DISCREPANCIES OR CHANGES IN THE LOCATIONS OF ANY UTILITIES SHOWN OR ENCOUNTERED DURING CONSTRUCTION. ANY DISCREPANCIES SHALL BE REPORTED TO THE OWNER. ANY DAMAGE RESULTING FROM THE FAILURE OF THE CONTRACTOR TO MAKE THESE DETERMINATIONS AND CONTACTS SHALL BE BORNE BY THE CONTRACTOR.
  2. THE CONTRACTOR SHALL EXERCISE CAUTION IN ALL EXCAVATION ACTIVITY DUE TO POSSIBLE EXISTENCE OF UNRECORDED UTILITY LINES.
  3. ALL AVAILABLE EXISTING INVERT INFORMATION IS GIVEN IN THE PROPOSED DRAINAGE TABLE. THE SURVEY INFORMATION FOR EXISTING UTILITY ELEVATIONS IS CONSIDERED INCOMPLETE. CONTRACTOR TO FIELD INVESTIGATE AND CONFIRM ALL INVERT AND UTILITY INFORMATION.
  4. ALL PROPOSED DRAINAGE STRUCTURES AND COVERS SHALL BE CITY OF DETROIT STANDARD. PROPOSED DRAINAGE INLETS SHALL BE CITY OF DETROIT ADA CATCH BASIN 5000Z4 5000M5 ASSEMBLY, 5000M5 GRATE. PROPOSED DRAINAGE INLETS SHALL BE CITY OF DETROIT ADA CATCH BASIN 5000Z4 5000M5 ASSEMBLY, 5000M5 GRATE.
  5. SEE SHEET DRAIN003 FOR PROPOSED DRAINAGE INFORMATION.



FINAL ROW PLAN REVISIONS		(SUBMITTAL DATE: )	
NO.	DATE	AUTH	DESCRIPTION



FILE:

DATE: 05/08/2019

JN: PW-7007  
BAGLEY STREETSCAPE

DRAINAGE SHEET  
BAGLEY STREETSCAPE  
STA 13+50 TO STA 16+77.97 (POE)

DRAWING SHEET  
BAG DRAIN 002  
23

AS-BUILT  
APRIL 2020

STORM DRAINAGE TABLE

STATION(AB)	Structure No.	Station	Offset	Rim / Surface Elevation	Inv In	In Out	Slope	Dr Structure, 48 inch dia	Sewer, Cl A, _ inch, Trench Detail B		Dr Structure Cover, Modified		Dr Structure Cleaning, Modified	Dr Structure Lead, Cleaning, Modified	Dr Structure, Tap, 12 Inch	Dr Structure, Tap, 6 Inch
									12 Inch	12 Inch	Manhole	Inlet (500M5)				
10+84(AB)	106	10+34.79	44LT(AB)	114.26(AB)	-	111.06(AB)	8.33%	1	FT	FT	LBS	LBS	EA	FT	EA	EA
10+84(AB)	EX 404	10+35.12	29LT(AB)	114.47(AB)	109.60 (106)	SEE SHT 20 110.30±	-	-	-	-	235	241	1	10	1	1
11+18(AB)	107	10+50.67	56LT(AB)	114.22(AB)	-	109.72(AB)	5.00%	1	-	6	-	241	-	-	-	-
11+20(AB)	EX 456	10+50.67	42LT(AB)	114.45(AB)	109.70 (EX 488)	SEE SHT 20 110.50±	-	-	-	-	235	-	1	10	1	1
11+22(AB)	EX 434	10+71.86	30RT(AB)	114.62(AB)	-	-	-	-	-	-	-	-	1	10	-	1
13+98(AB)	103	11+48.79	11LT(AB)	115.66(AB)	-	SEE SHT 23 111.00 (101)	0.48%	1	-	126	-	241	-	-	-	-
12+56(AB)	101	10+21.90	11LT(AB)	115.08(AB)	109.40 (103)	SEE SHT 20 111.00 (110)	0.40%	1	-	67	-	241	-	-	-	-
11+99(AB)	110	11+34.80	11LT(AB)	114.77(AB)	109.70 (EX 488)	SEE SHT 20 111.00 (EX 488)	0.43%	1	-	54	-	241	-	-	-	-
11+52(AB)	EX 488	11+19.83	15LT(AB)	114.64(AB)	111.90±	112.04(110)(AB)	-	-	-	-	-	-	1	10	1	1
13+98(AB)	102	13+16.12	11RT(AB)	115.84(AB)	-	SEE SHT 23 111.00 (100)	1.17%	1	-	128	-	241	-	-	-	-
12+57(AB)	100	12+16.86	14RT(AB)	115.25(AB)	109.60 (102)	SEE SHT 20 111.00 (111)	1.97%	1	-	66	-	241	-	-	-	-
11+97(AB)	111	11+11.50	15RT(AB)	115.16(AB)	109.70 (100)	SEE SHT 20 111.00 (EX 534)	2.18%	1	-	55	-	241	-	-	-	-
11+53(AB)	EX 534	11+02.69	15RT(AB)	114.84(AB)	109.00 (100)	SEE SHT 20 108.80	-	-	-	-	-	-	1	10	1	1
14+47(AB)	109	13+97.86	40LT(AB)	115.14(AB)	-	112.49(AB)	1.00%	1	-	10	-	241	-	-	-	-
14+48(AB)	EX 899	13+97.86	29LT(AB)	115.78(AB)	112.75 (109)	NOT VISIBLE(AB)	-	-	-	-	235	-	1	10	1	1
14+71(AB)	108	14+21.30	44LT(AB)	115.39(AB)	-	111.44(AB)	1.00%	1	-	10	-	241	-	-	-	-
14+72(AB)	EX 1012	14+22.30	32LT(AB)	115.75(AB)	109.80 (108)	111.95(AB)	-	-	-	-	235	-	1	10	1	1
15+06(AB)	105	14+56.90	11LT(AB)	115.67(AB)	-	110.97(AB)	0.74%	1	-	95	-	241	-	-	-	-
16+00(AB)	EX 1208	15+50.86	19LT(AB)	115.54(AB)	109.40 (105)	SEE SHT 23 112.39	-	-	-	-	-	-	1	10	1	1
15+07(AB)	104	14+57.04	10RT(AB)	115.63(AB)	-	113.18(AB)	0.79%	1	-	95	-	241	-	-	-	-
16+01(AB)	EX 1190	15+51.30	17RT(AB)	115.23(AB)	112.35 (104)	SEE SHT 23 112.35	-	-	-	-	-	-	1	10	1	1
16+36(AB)	EX 1289	15+86.36	18LT(AB)	115.70(AB)	-	SEE SHT 23 110.75±	-	-	-	-	235	-	1	10	-	1
16+51(AB)	112	16+00.97	42LT(AB)	114.96(AB)	-	110.31(AB)	2.00%	1	-	30	-	241	1	10	1	1
16+81(AB)	EX 1384	16+27.65	42LT(AB)	114.96(AB)	109.60	110.36(AB)	-	-	-	-	235	-	1	10	-	1
TOTALS								13	716	32	1410	3133	12	120	9	11

11+22(AB) ADD'L CB 30RT(AB) 114.82(AB) 12"E 108.82(AB) 12"NW 108.72(AB)

734 L.F. OF 12"RCP(AB)

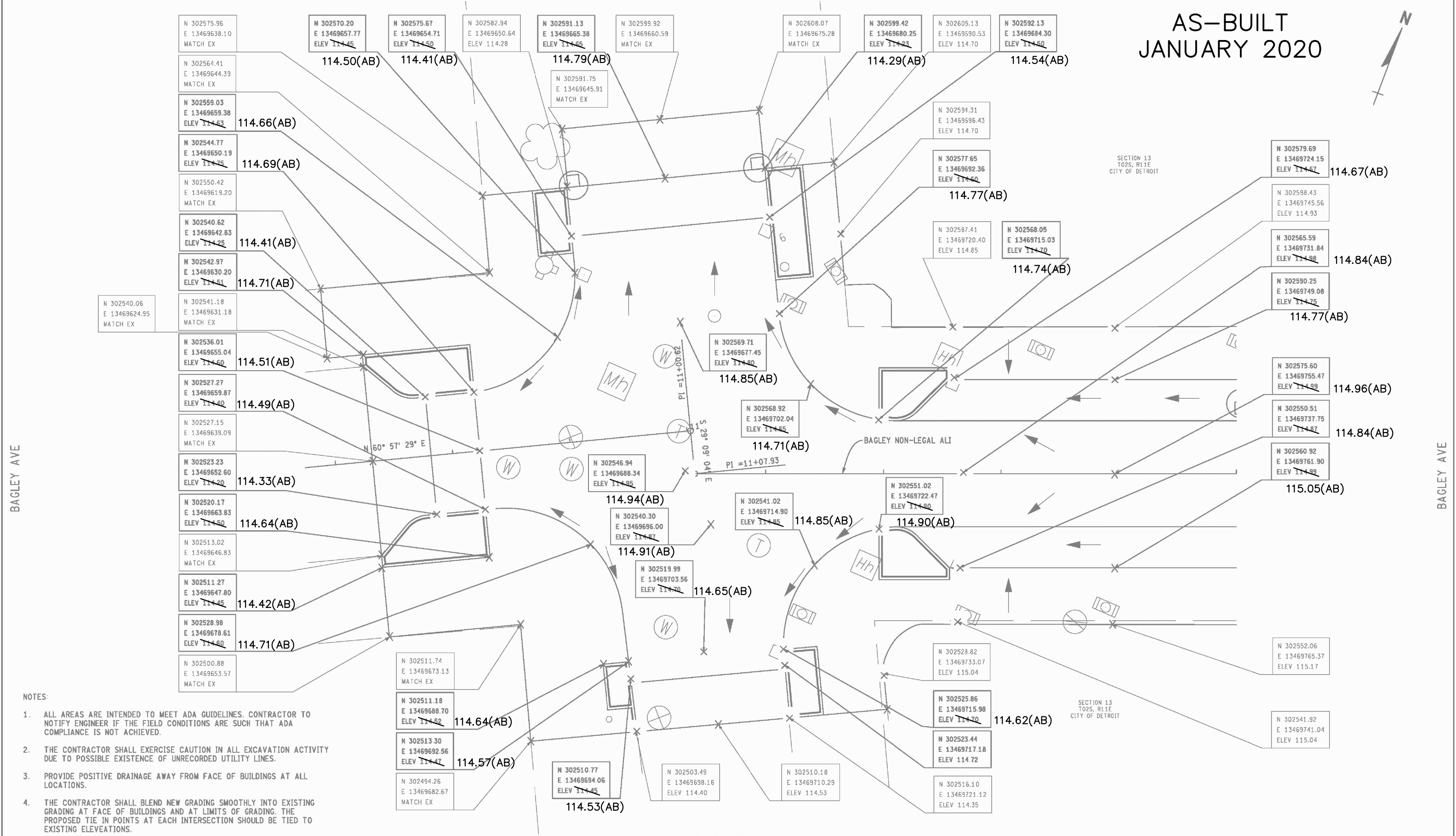
NOTES:

1. THE LOCATIONS AND ELEVATIONS OF ALL EXISTING UTILITIES ARE APPROXIMATE, AND ALL UTILITIES MAY NOT BE SHOWN. PRESENCE AND LOCATIONS OF ALL UTILITIES WITHIN THE LIMIT OF WORK MUST BE DETERMINED BY THE CONTRACTOR PRIOR TO COMMENCEMENT OF CONSTRUCTION ACTIVITY. THE CONTRACTOR SHALL BE RESPONSIBLE FOR IDENTIFYING AND CONTACTING THE CONTROLLING AUTHORITIES AND/OR UTILITY COMPANIES RELATIVE TO THE LOCATIONS AND ELEVATIONS OF THEIR LINES. THE CONTRACTOR SHALL KEEP A RECORD OF ANY DISCREPANCIES OR CHANGES IN THE LOCATIONS OF ANY UTILITIES SHOWN OR ENCOUNTERED DURING CONSTRUCTION. ANY DISCREPANCIES SHALL BE REPORTED TO THE OWNER. ANY DAMAGE RESULTING FROM THE FAILURE OF THE CONTRACTOR TO MAKE THESE DETERMINATIONS AND CONTACTS SHALL BE BORNE BY THE CONTRACTOR.
2. THE CONTRACTOR SHALL EXERCISE CAUTION IN ALL EXCAVATION ACTIVITY DUE TO POSSIBLE EXISTENCE OF UNRECORDED UTILITY LINES.
3. ALL AVAILABLE EXISTING INVERT INFORMATION IS GIVEN IN THE PROPOSED DRAINAGE TABLE. THE SURVEY INFORMATION FOR EXISTING UTILITY ELEVATIONS IS CONSIDERED INCOMPLETE. CONTRACTOR TO FIELD INVESTIGATE AND CONFIRM ALL INVERT AND UTILITY INFORMATION.
4. ALL PROPOSED DRAINAGE STRUCTURES AND COVERS SHALL BE CITY OF DETROIT STANDARD. PROPOSED DRAINAGE INLETS SHALL BE CITY OF DETROIT ADA CATCH BASIN 5000Z4 5000M5 ASSEMBLY, 5000M5 GRATE.
5. CONVERT EX.456, EX.404, EX.899, EX.1012, EX.1289 AND EX.1384 GRATES TO DRAIN MANHOLE COVERS.

FINAL ROW PLAN REVISIONS (SUBMITTAL DATE: )				TOOLE DESIGN				NO SCALE		DATE: 05/08/2019		DRAINAGE SHEET		DRAWING		SHEET	
NO.	DATE	AUTH	DESCRIPTION	NO.	DATE	AUTH	DESCRIPTION	FILE:		JN: PW-7007-BAGLEY STREETScape		BAGLEY AVE		BAG DRAIN 003		24	

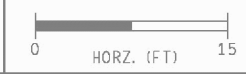
24TH STREET

AS-BUILT  
JANUARY 2020



- NOTES:**
1. ALL AREAS ARE INTENDED TO MEET ADA GUIDELINES. CONTRACTOR TO NOTIFY ENGINEER IF THE FIELD CONDITIONS ARE SUCH THAT ADA COMPLIANCE IS NOT ACHIEVED.
  2. THE CONTRACTOR SHALL EXERCISE CAUTION IN ALL EXCAVATION ACTIVITY DUE TO POSSIBLE EXISTENCE OF UNRECORDED UTILITY LINES.
  3. PROVIDE POSITIVE DRAINAGE AWAY FROM FACE OF BUILDINGS AT ALL LOCATIONS.
  4. THE CONTRACTOR SHALL BLEND NEW GRADING SMOOTHLY INTO EXISTING GRADING AT FACE OF BUILDINGS AND AT LIMITS OF GRADING. THE PROPOSED TIE IN POINTS AT EACH INTERSECTION SHOULD BE TIED TO EXISTING ELEVATIONS.

FINAL ROW PLAN REVISIONS (SUBMITTAL DATE: )							
NO.	DATE	AUTH	DESCRIPTION	NO.	DATE	AUTH	DESCRIPTION



24TH STREET

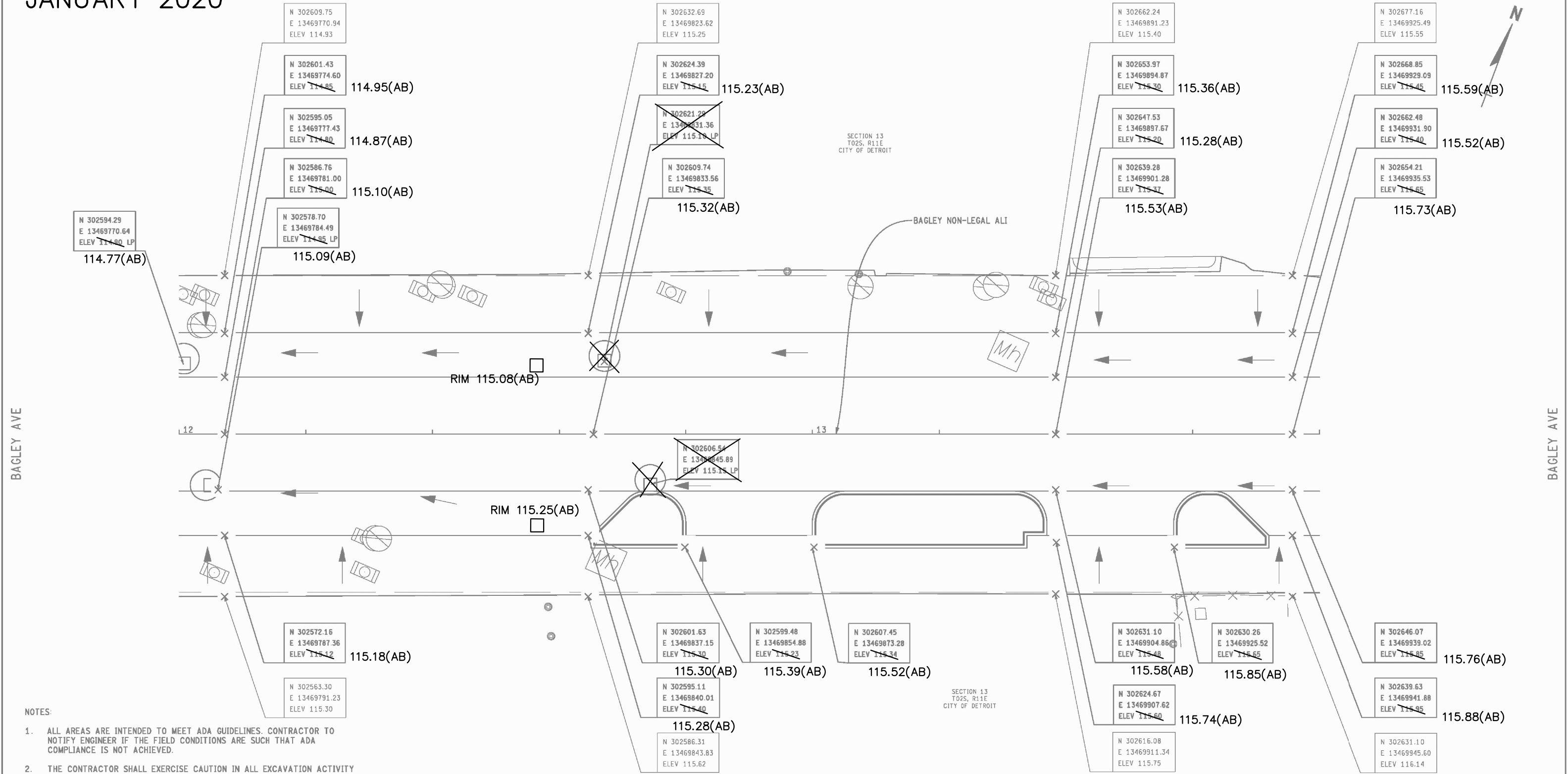
DATE: 05/08/2019

JN: PW-7007  
BAGLEY STREETScape

GRADING SHEET  
BAGLEY STREETScape  
STA 10+40.31 (POB) TO STA 12+00

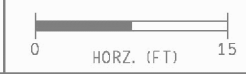
DRAWING SHEET  
BAG DETGRD 001  
25  
p. 118

# AS-BUILT JANUARY 2020



- NOTES:
1. ALL AREAS ARE INTENDED TO MEET ADA GUIDELINES. CONTRACTOR TO NOTIFY ENGINEER IF THE FIELD CONDITIONS ARE SUCH THAT ADA COMPLIANCE IS NOT ACHIEVED.
  2. THE CONTRACTOR SHALL EXERCISE CAUTION IN ALL EXCAVATION ACTIVITY DUE TO POSSIBLE EXISTENCE OF UNRECORDED UTILITY LINES.
  3. PROVIDE POSITIVE DRAINAGE AWAY FROM FACE OF BUILDINGS AT ALL LOCATIONS.
  4. THE CONTRACTOR SHALL BLEND NEW GRADING SMOOTHLY INTO EXISTING GRADING AT FACE OF BUILDINGS AND AT LIMITS OF GRADING. THE PROPOSED TIE IN POINTS AT EACH INTERSECTION SHOULD BE TIED TO EXISTING ELEVATIONS.

FINAL ROW PLAN REVISIONS		(SUBMITTAL DATE: )	
NO.	DATE	AUTH	DESCRIPTION



DATE: 05/08/2019  
FILE:

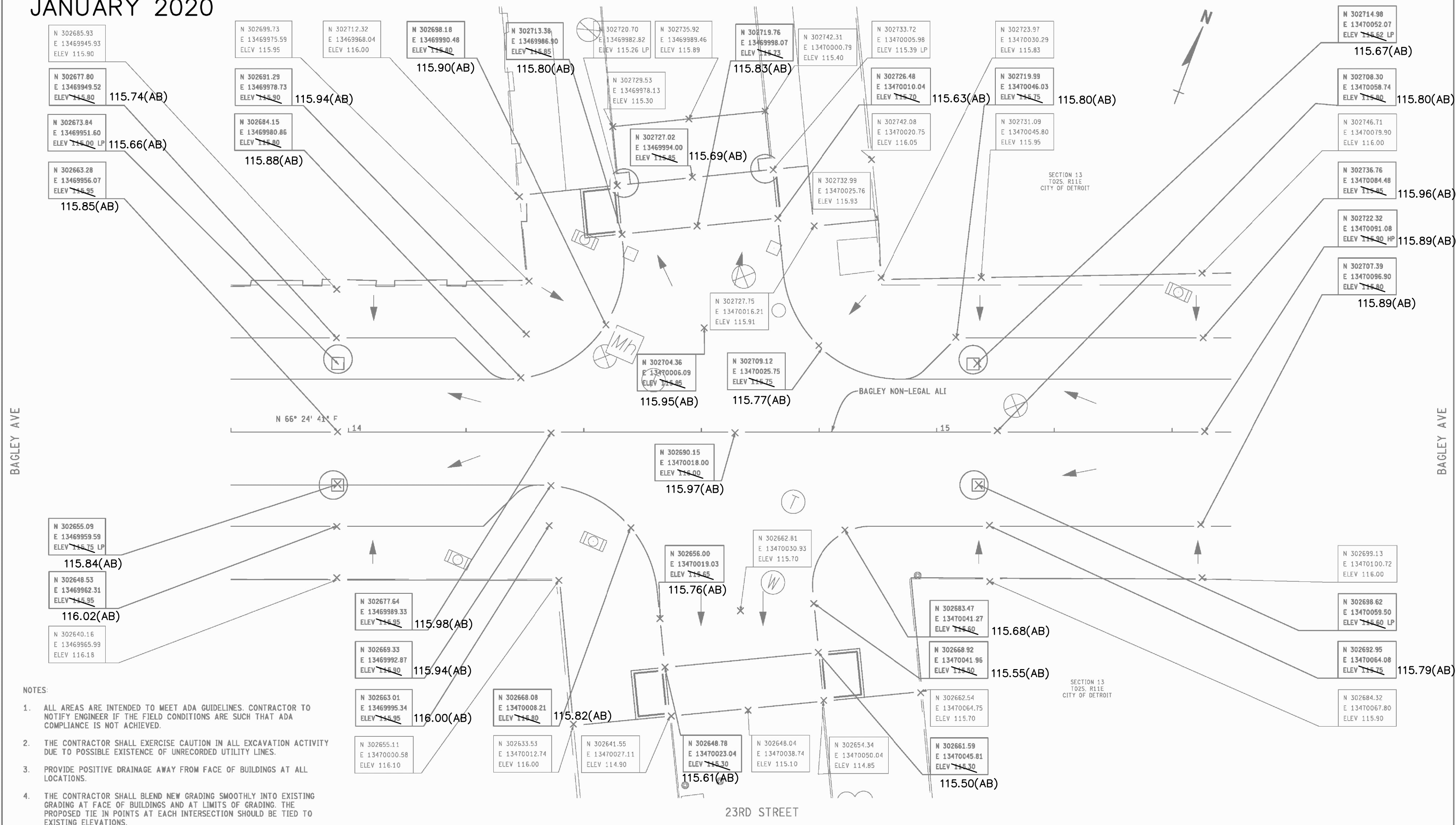
JN: PW-7007  
BAGLEY STREETScape

GRADING SHEET  
BAGLEY STREETScape  
STA 12+00 TO STA 13+80

DRAWING SHEET  
BAG DETGRD 002 26  
p. 119

# AS-BUILT JANUARY 2020

23RD STREET



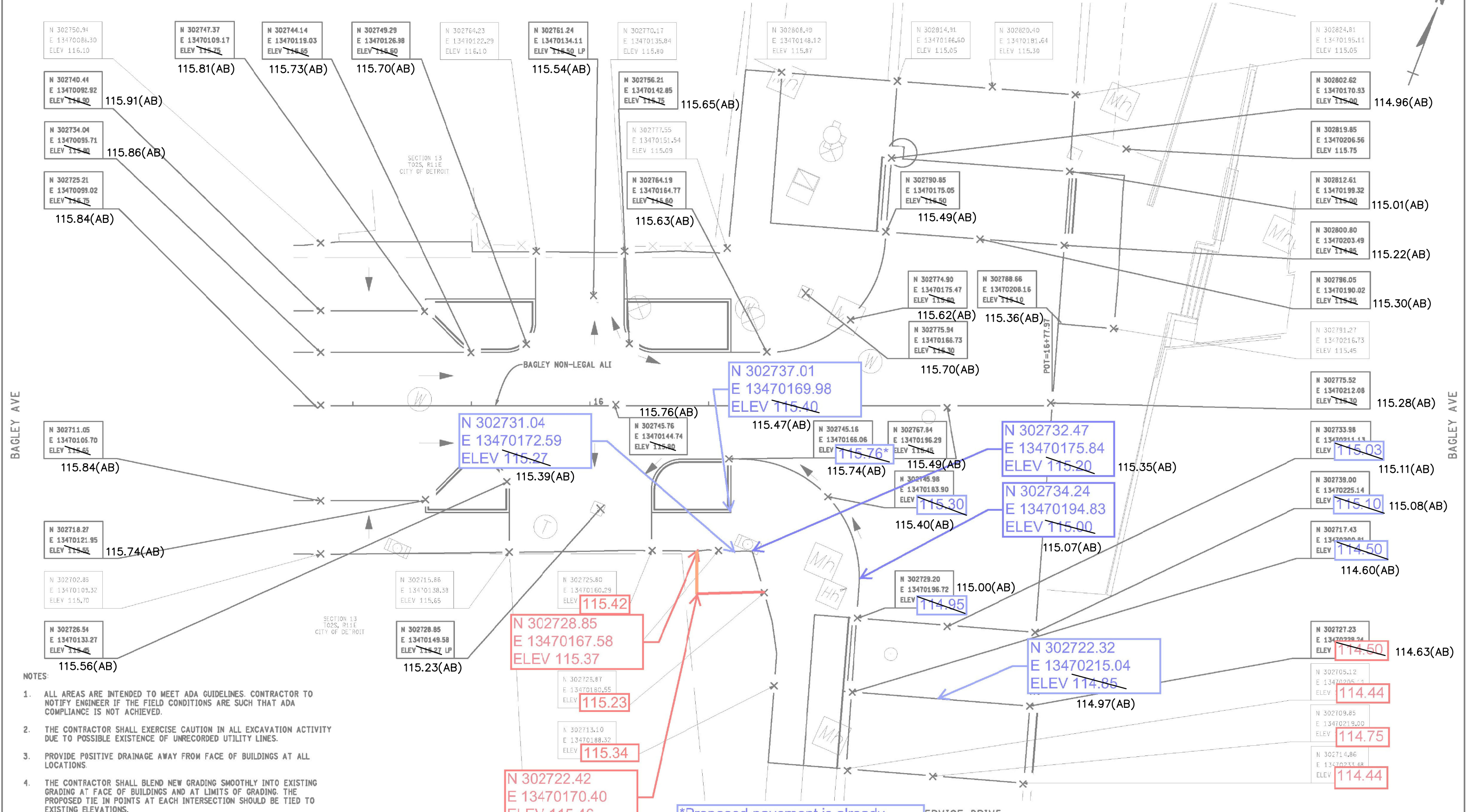
- NOTES:**
1. ALL AREAS ARE INTENDED TO MEET ADA GUIDELINES. CONTRACTOR TO NOTIFY ENGINEER IF THE FIELD CONDITIONS ARE SUCH THAT ADA COMPLIANCE IS NOT ACHIEVED.
  2. THE CONTRACTOR SHALL EXERCISE CAUTION IN ALL EXCAVATION ACTIVITY DUE TO POSSIBLE EXISTENCE OF UNRECORDED UTILITY LINES.
  3. PROVIDE POSITIVE DRAINAGE AWAY FROM FACE OF BUILDINGS AT ALL LOCATIONS.
  4. THE CONTRACTOR SHALL BLEND NEW GRADING SMOOTHLY INTO EXISTING GRADING AT FACE OF BUILDINGS AND AT LIMITS OF GRADING. THE PROPOSED TIE IN POINTS AT EACH INTERSECTION SHOULD BE TIED TO EXISTING ELEVATIONS.

FINAL ROW PLAN REVISIONS (SUBMITTAL DATE: )				TOOLE DESIGN		DATE: 05/08/2019		GRADING SHEET		DRAWING	SHEET
NO.	DATE	AUTH	DESCRIPTION	NO.	DATE	AUTH	DESCRIPTION	BAGLEY STREETSCAPE		BAG DETGRD 003	27
								STA 13+80 TO STA 15+50			p. 120



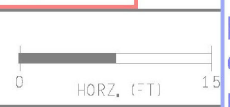
# AS-BUILT JANUARY 2020

W FISHER SERVICE DRIVE



- NOTES:
1. ALL AREAS ARE INTENDED TO MEET ADA GUIDELINES. CONTRACTOR TO NOTIFY ENGINEER IF THE FIELD CONDITIONS ARE SUCH THAT ADA COMPLIANCE IS NOT ACHIEVED.
  2. THE CONTRACTOR SHALL EXERCISE CAUTION IN ALL EXCAVATION ACTIVITY DUE TO POSSIBLE EXISTENCE OF UNRECORDED UTILITY LINES.
  3. PROVIDE POSITIVE DRAINAGE AWAY FROM FACE OF BUILDINGS AT ALL LOCATIONS.
  4. THE CONTRACTOR SHALL BLEND NEW GRADING SMOOTHLY INTO EXISTING GRADING AT FACE OF BUILDINGS AND AT LIMITS OF GRADING. THE PROPOSED TIE IN POINTS AT EACH INTERSECTION SHOULD BE TIED TO EXISTING ELEVATIONS.

FINAL ROW PLAN REVISIONS			SUBMITTAL DATE:		
NO.	DATE	AUTH	NO.	DATE	AUTH



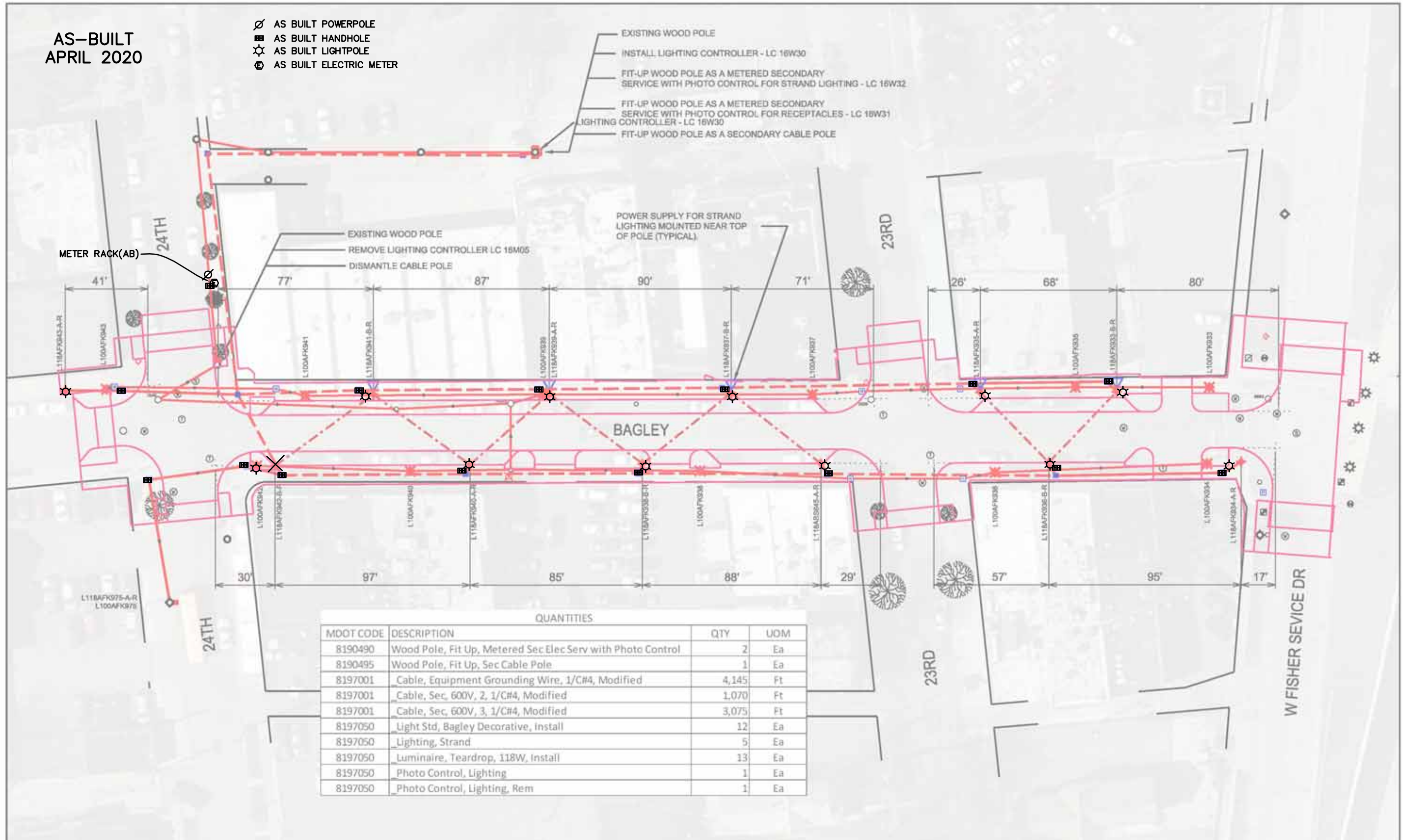
\*Proposed pavement is already poured- elevation picked from contractor's survey taken after pavement was set.

W FISHER SERVICE DRIVE

GRADING SHEET		DRAWING	SHEET
BAGLEY STREETScape		BAG DETGRD 004	28
STA 15+50 TO STA 16+77.97 (POE)			

AS-BUILT  
APRIL 2020

- ⊘ AS BUILT POWERPOLE
- AS BUILT HANDHOLE
- ⊙ AS BUILT LIGHTPOLE
- ⊕ AS BUILT ELECTRIC METER



QUANTITIES			
MDOT CODE	DESCRIPTION	QTY	UOM
8190490	Wood Pole, Fit Up, Metered Sec Elec.Serv with Photo Control	2	Ea
8190495	Wood Pole, Fit Up, Sec Cable Pole	1	Ea
8197001	Cable, Equipment Grounding Wire, 1/C#4, Modified	4,145	Ft
8197001	Cable, Sec, 600V, 2, 1/C#4, Modified	1,070	Ft
8197001	Cable, Sec, 600V, 3, 1/C#4, Modified	3,075	Ft
8197050	Light Std, Bagley Decorative, Install	12	Ea
8197050	Lighting, Strand	5	Ea
8197050	Luminaire, Teardrop, 118W, Install	13	Ea
8197050	Photo Control, Lighting	1	Ea
8197050	Photo Control, Lighting, Rem	1	Ea



PROJECT DESCRIPTION  
**DESIGN ENGINEERING FOR BAGLEY LIGHTING UPGRADE  
 24TH TO THE FISHER SERVICE DRIVE SB**  
 OVERHEAD CONSTRUCTION AND CABLING PLAN



DATE	DESCRIPTION	SHEET
2018-03-28	100% SUBMITTAL	IN-01
2018-04-17	POLE LOCATION ADJUSTMENTS	
2018-04-18	PAUSE REDUCTION	
2018-04-24	OSC SUBMITTAL	
2018-04-25	CEC ADJUSTMENTS	
2018-05-07	NAV ITEM CORRECTIONS	
2018-05-07	NAV ITEM CORRECTIONS	