

By: Abdul
1996

CITY OF DETROIT

DENNIS W. ARCHER-MAYOR

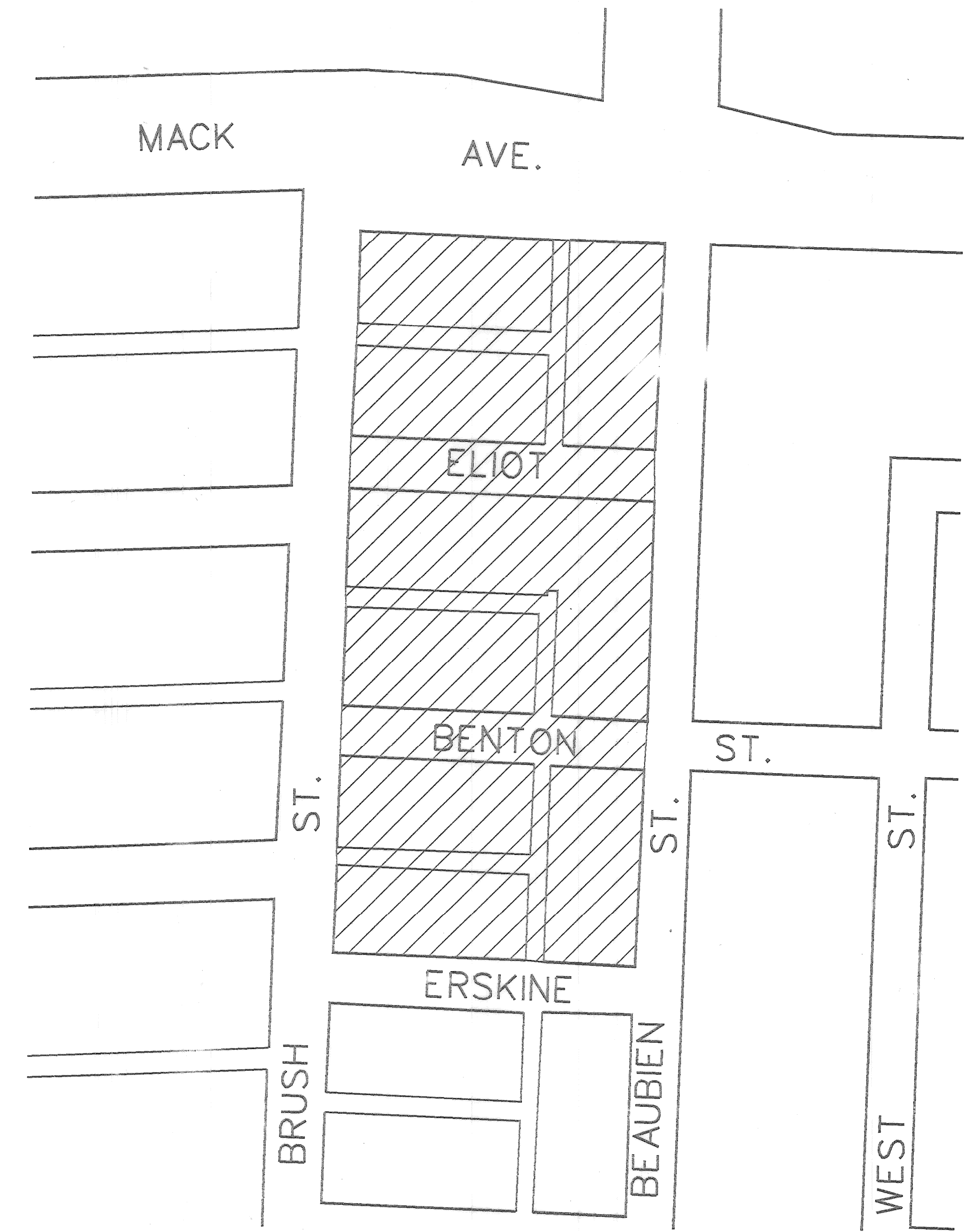
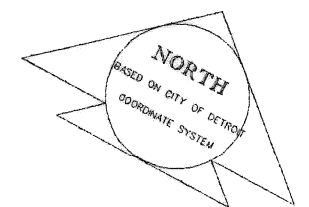
CITY ENGINEERING DIVISION

PLANS FOR PROPOSED STREET AND ALLEY PAVEMENT REMOVAL, ALLEY REPLACEMENT, SIDEWALK REMOVAL AND MISCELLANEOUS CONSTRUCTION IN THE AREA BOUNDED BY BRUSH, BEAUBIEN, ERSKINE AND MACK AVENUE. HOSPICE OF SOUTHEASTERN MICHIGAN BRUSH PARK AREA FOR PLANNING AND DEVELOPMENT DEPARTMENT

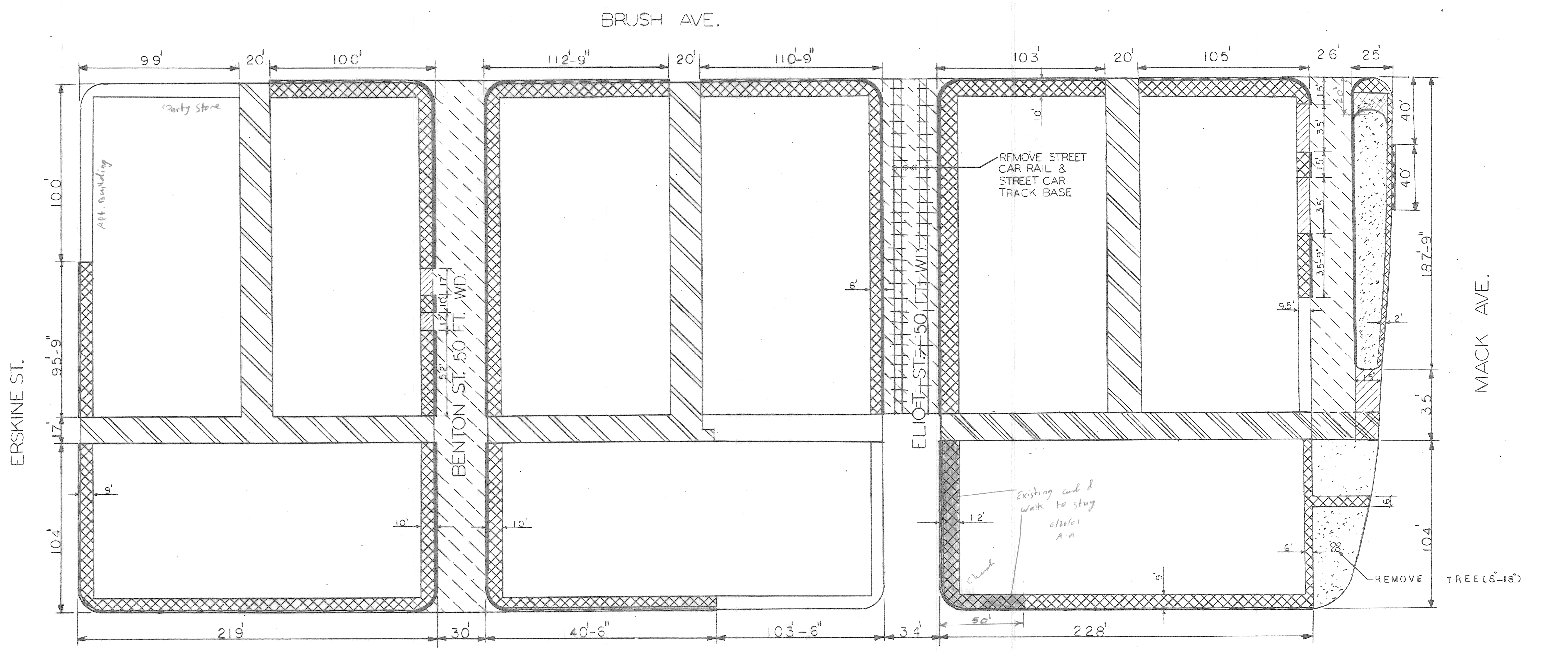
INDEX OF SHEETS

1. TITLE SHEET
2. REMOVAL PLAN
3. UTILITY PLAN
4. ALLEY PAVING PLAN & PROFILE PLAN
5. QUANTITY SHEET
6. CURB AND WALK

CONSTRUCTION AREA



PROJECT: STREET AND ALLEY PAVEMENT REMOVAL, ALLEY REPLACEMENT, SIDEWALK REMOVAL AND MISCELLANEOUS CONSTRUCTION IN THE AREA BOUNDED BY BRUSH, BEAUBIEN, ERSKINE AND MACK AVENUE. HOSPICE OF SOUTHEASTERN MICHIGAN-BRUSH PARK AREA FOR PLANNING AND DEVELOPMENT DEPARTMENT.		CONTRACT NO. PW-6843
PLANS PREPARED BY CITY ENGINEERING DIVISION		
RECOMMENDED FOR APPROVAL	 ENGINEER OF STREETS	2/28/97 DATE
RECOMMENDED FOR APPROVAL	 ENGINEER OF INSPECTION	2/28/97 DATE
APPROVED	 HEAD ENGINEER	2/28/97 DATE
APPROVED	 CITY ENGINEER	3/7/97 DATE
DATE	AUGUST, 1996	DRWG. NO.



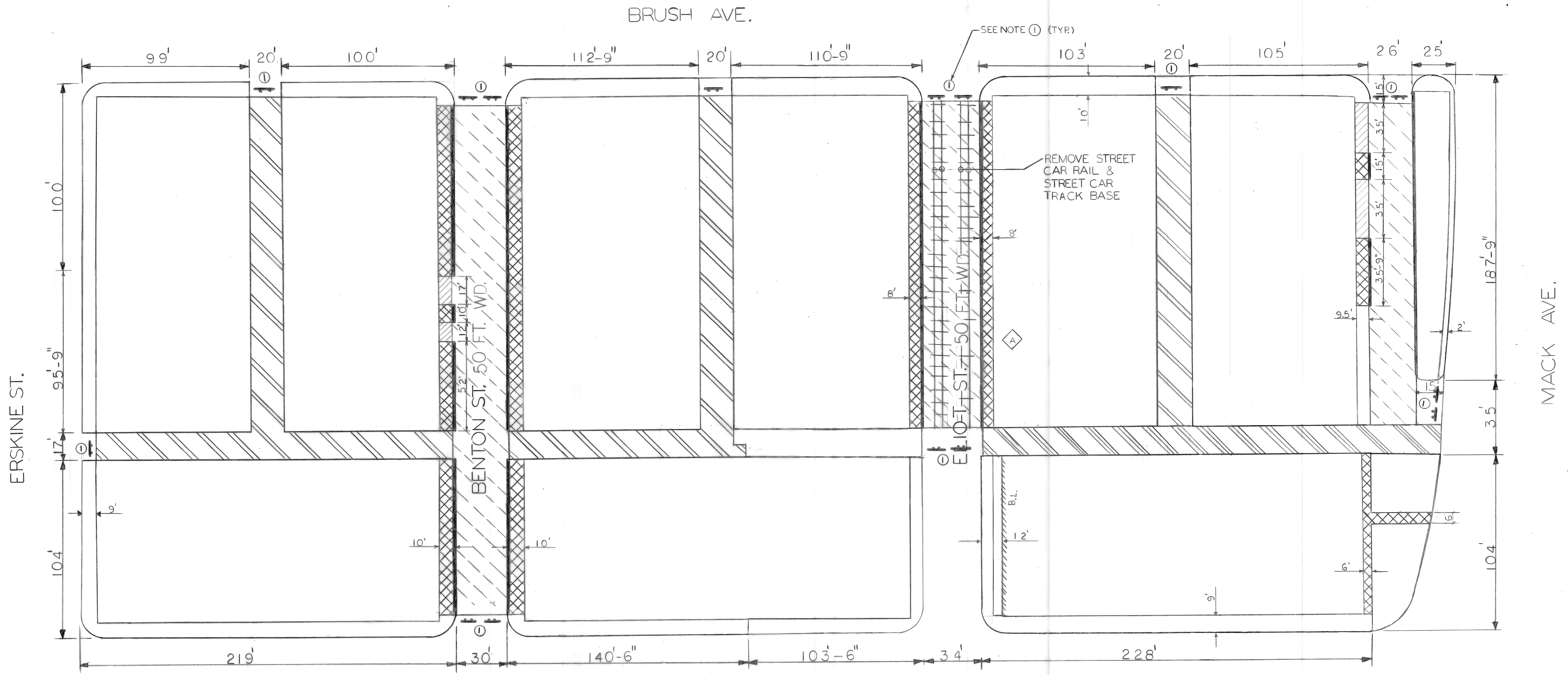
REMOVAL LEGEND

- EXCAVATION
- STREET PAV'T. REMOVAL
- ALLEY PAV'T. REMOVAL
- ALLEY REPLACEMENT SEE SHEET#5 FOR ALLEY PAVING PLAN
- SIDEWALK REMOVAL
- DRIVEWAY REMOVAL
- SEPERATE TYPE CURB REMOVAL
- SEPERATE TYPE CURB REMOVAL (INCIDENTAL TO PAV'T. REMOVAL)
- INTG. TYPE CURB REMOVAL

REMOVAL PLAN
SCALE: 1" = 30'

<table border="1"> <tr> <td>DESCRIPTION</td> <td>OR</td> <td>CHK</td> <td>D</td> <td>AP</td> <td>VD</td> <td>DATE</td> </tr> <tr> <td>REVISIONS</td> <td></td> <td></td> <td></td> <td></td> <td></td> <td></td> </tr> </table>		DESCRIPTION	OR	CHK	D	AP	VD	DATE	REVISIONS							<table border="1"> <tr> <td>BY</td> <td>A.A.</td> <td>CHECKED BY</td> <td>N.H.</td> <td>APPROVED:</td> </tr> <tr> <td>PLAN</td> <td></td> <td></td> <td></td> <td>ENGINEER OF STREETS</td> </tr> <tr> <td>GRADE</td> <td></td> <td></td> <td></td> <td></td> </tr> <tr> <td>ESTIMATE</td> <td>A.A.</td> <td></td> <td></td> <td></td> </tr> <tr> <td>FINAL</td> <td>CHECK</td> <td>REVIEW</td> <td></td> <td></td> </tr> </table>	BY	A.A.	CHECKED BY	N.H.	APPROVED:	PLAN				ENGINEER OF STREETS	GRADE					ESTIMATE	A.A.				FINAL	CHECK	REVIEW			<p align="center">CITY OF DETROIT CITY ENGINEERING DEPARTMENT BUREAUS OF STREETS AND HIGHWAYS FOR PLANNING AND DEVELOPMENT DEPARTMENT</p>	<p align="center">STREET AND ALLEY PAVEMENT REMOVAL, ALLEY REPLACEMENT, CURB AND SIDEWALK REPLACEMENT AND MISCELLANIOUS CONSTRUCTION IN THE AREA BOUNDED BY: BRUSH, BEAUBIEN, ERSKINE AND MACK AVE. HOSPICE SOUTHEASTERN OF MICHIGAN BRUSH PARK AREA</p>	<p align="center">SHEET 2 OF 6 SHEETS CONTRACT NO. PW 6843 ASSIGNMENT NO. 97-14-01 DATE JULY 1996</p>
DESCRIPTION	OR	CHK	D	AP	VD	DATE																																						
REVISIONS																																												
BY	A.A.	CHECKED BY	N.H.	APPROVED:																																								
PLAN				ENGINEER OF STREETS																																								
GRADE																																												
ESTIMATE	A.A.																																											
FINAL	CHECK	REVIEW																																										

REMOVAL PLAN

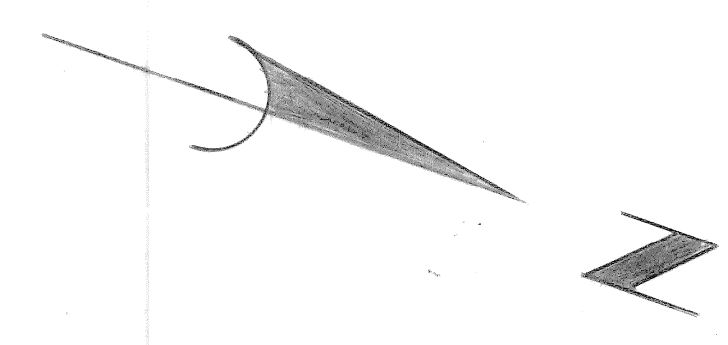


REMOVAL LEGEND

- STREET PAV'T. REMOVAL
- ALLEY PAV'T. REMOVAL
- ALLEY REPLACEMENT SEE SHEET# 5 FOR ALLEY PAVING PLAN
- SIDEWALK REMOVAL
- DRIVEWAY REMOVAL
- SEPERATE TYPE CURB REMOVAL (INCIDENTAL TO PAV'T. REMOVAL)

REMOVAL PLAN
SCALE: 1" = 30'

NOTE (C): CONSTRUCT STREET BARRICADE (SEE CITY OF DETROIT STREETS DETAIL PAVING & DRAINAGE STANDARDS "DETAIL STANDARD NO. 19-TEMPORARY BARRICADE TYPE NO. 1")

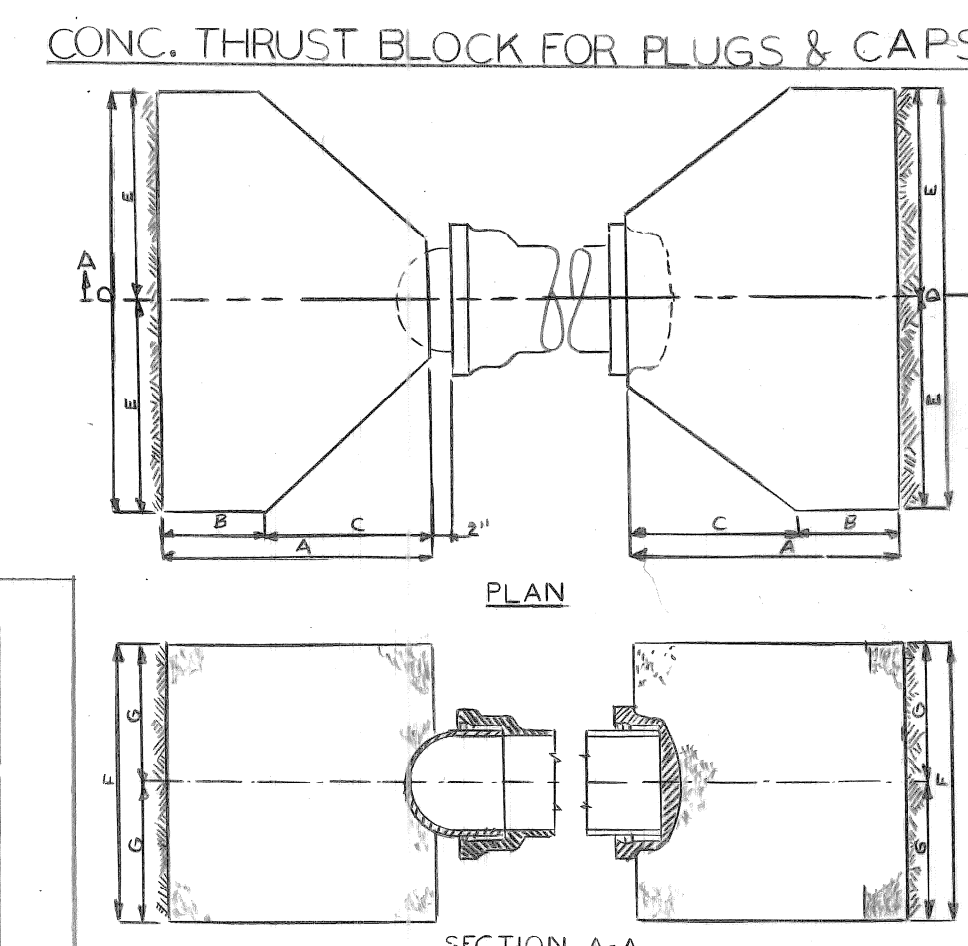
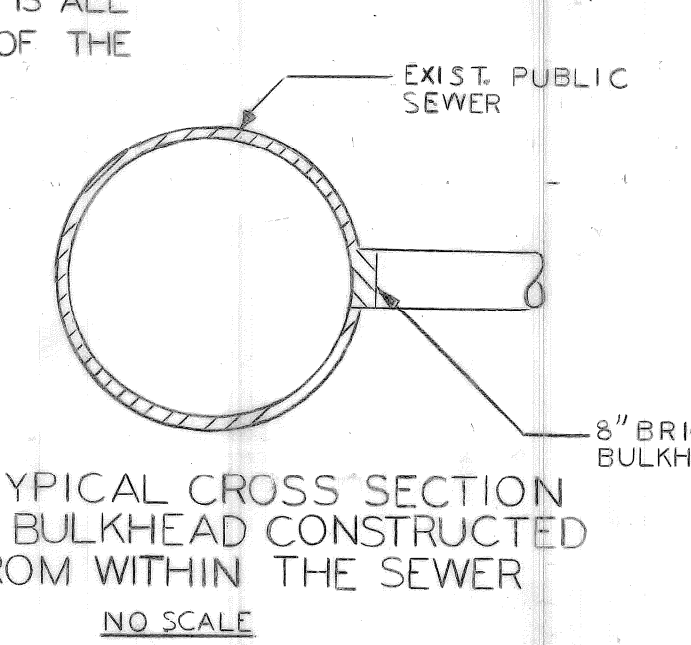
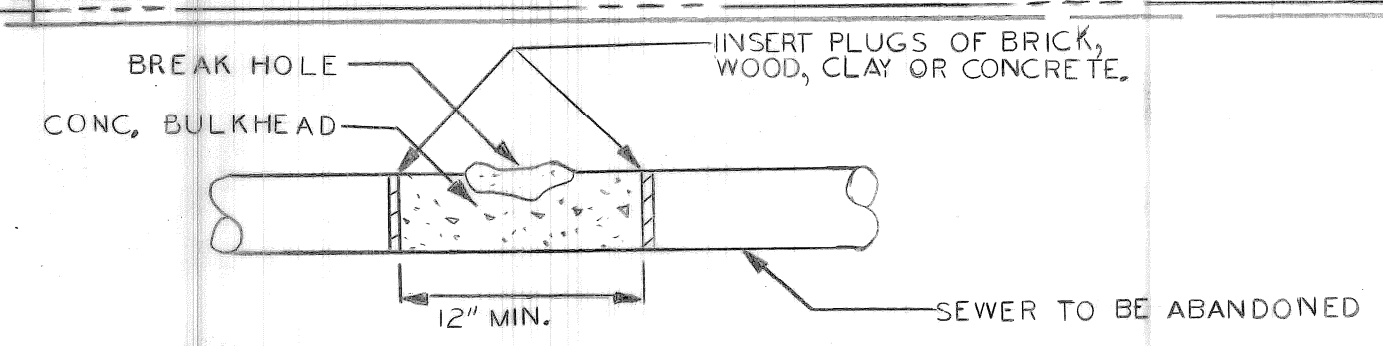
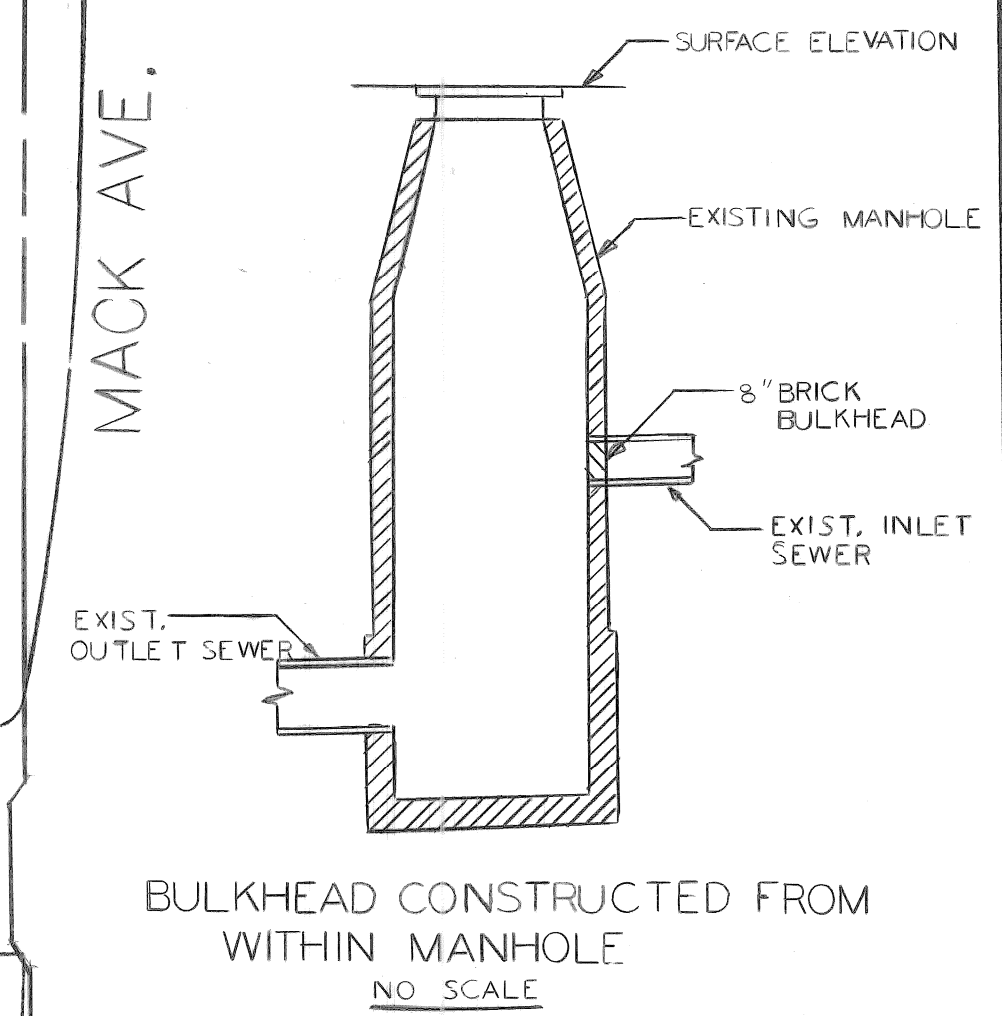
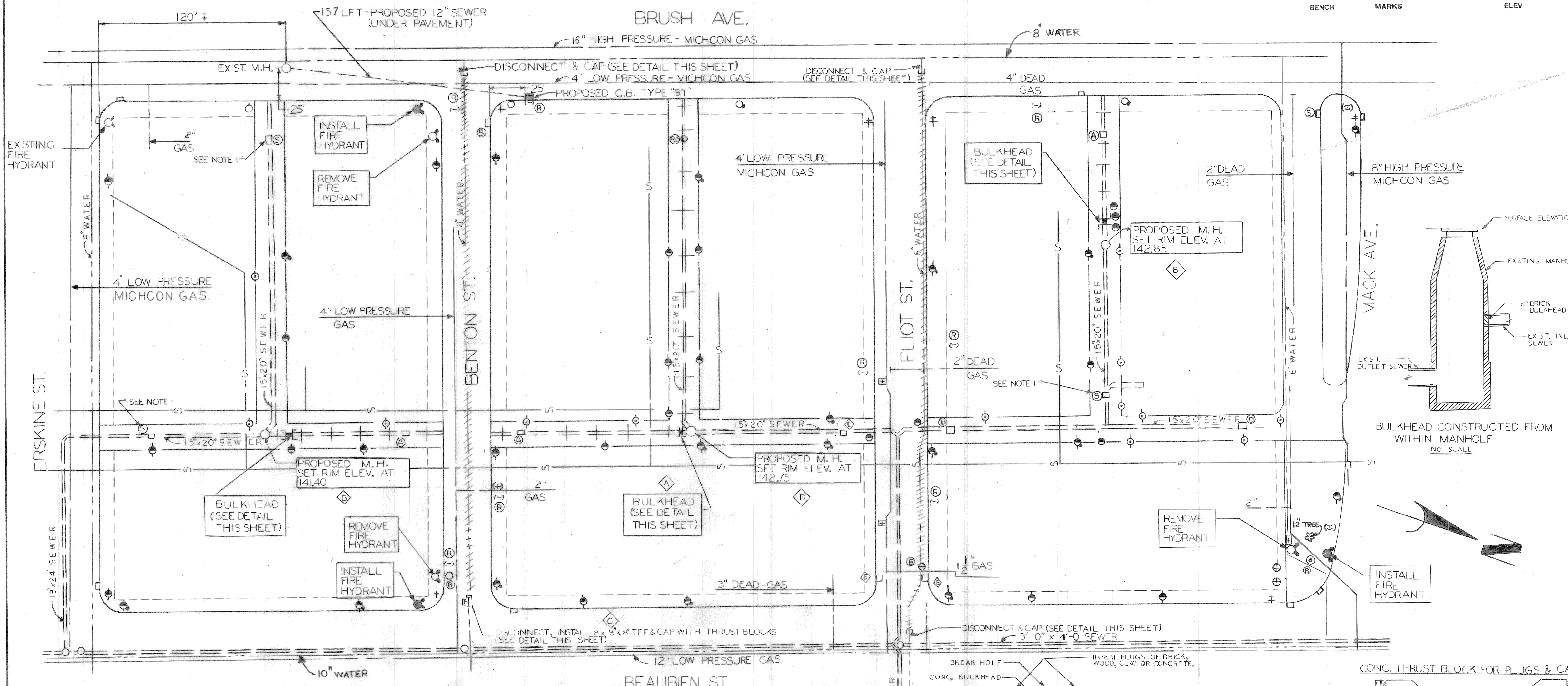


RELOCAT PROPERTY LINE ON NORTH SIDE OF ELIOT ST.	A.A.	N.H. 7.97	PLAN	BY A.A.	CHECKED BY N.H.	APPROVED: <i>Radim Haidan</i> ENGINEER OF STREETS
			GRADE			
			ESTIMATE	A.A.		
DESCRIPTION	DR	CH	AP	VD	DATE	FINAL
REVISIONS						

CITY OF DETROIT
CITY ENGINEERING DEPARTMENT
BUREAUS OF STREETS AND HIGHWAYS
FOR
PLANNING AND DEVELOPMENT DEPARTMENT

STREET AND ALLEY PAVEMENT REMOVAL, ALLEY REPLACEMENT, SIDEWALK REMOVAL AND MISCELLANEOUS CONSTRUCTION IN THE AREA BOUNDED BY: BRUSH, BEAUBIEN, ERSKINE AND MACK AVE. HOSPICE SOUTHEASTERN OF MICHIGAN BRUSH-PARK AREA
REMOVAL PLAN

SHEET 2 OF 6 SHEETS
CONTRACT NO. PW 6843
ASSIGNMENT NO. 97-14-01
DATE JULY 1996



SIZE	A	B	C	D	E	F	G
6"	1'-11"	0'-9"	1'-2"	2'-6"	1'-2"	1'-0"	0'-9"
8"	1'-11"	0'-9"	1'-2"	2'-6"	1'-2"	1'-0"	1'-0"
12"	2'-1"	0'-9"	1'-2"	2'-6"	1'-2"	1'-0"	1'-0"
16"	2'-8"	1'-0"	1'-8"	3'-0"	2'-6"	1'-0"	2'-0"

NOTE: THRUST BLOCK FACE SHALL BE Poured AGAINST UNDISTURBED EARTH

HYDRANT ALTERATION WORK	
ITEM	QUANTITY AND UNIT
INSTALL NEW FIRE HYDRANT *	3 EACH
REMOVE FIRE HYDRANT METHOD I OR METHOD II	3 EACH

*THE LOCATION OF HYDRANTS, AS SHOWN, ARE APPROXIMATE. D.F.D. WILL GIVE EXACT LOCATION OF NEW OR RELOCATE FIRE HYDRANT.

- UTILITY LEGEND**
- Ⓧ CATCH BASIN ADJUSTMENT
 - ⓐ CATCH BASIN REMOVAL
 - Ⓢ CATCH BASIN SPECIAL ABANDONMENT
 - EXISTING SEWER
 - EXISTING SEWER TO BE ABANDONED
 - Ⓡ STOPBOX REMOVAL
 - Ⓡ MANHOLE ADJUSTMENT
 - Ⓡ MANHOLE REMOVAL
 - EXISTING WATER LINE
 - EXISTING WATER LINE TO BE ABANDONED
 - Ⓡ 8" x 8" x 8" TEE FOR DISCONNECTION
 - Ⓡ NEW SEWER BULKHEAD

SEWER BULKHEADS
 SEWER BULKHEADS SHALL BE CONSTRUCTED OF BRICK OR CONCRETE TO THE SPECIFIED THICKNESS AS SHOWN ON THE PLANS OR AS INDICATED BY THE ENGINEER.

BRICK BULKHEADS
 THE SURFACE CONTACT OF THE SEWER WALL WITH THE BULKHEAD SHALL BE ROUGHENED BY BRUSH, HAMMERING OR CHISELING AND THEN CLEANED JUST PRIOR TO THE BULKHEAD CONSTRUCTION. SUCH BULKHEADS SHALL BE VERTICAL WITH ALTERNATE HEADER AND STRETCHER COURSES LAID IN MORTAR. VERTICAL JOINTS IN ADJACENT COURSES SHALL BE STAGGERED. BRICK SHALL BE LAID WITH FULL MORTAR JOINTS. ALL AVAILABLE BEARING AREAS SHALL BE COVERED WITH MORTAR SPREAD IN AN EVEN LAYER WITHOUT SPLITTING OR FURROWING, AND ALL VERTICAL AND INTERIOR JOINTS SHALL ALSO BE SOLIDLY FILLED WITH MORTAR. THE COURSES SHALL BE LAID EVEN. BULKHEADS SHALL BE CONSTRUCTED AS PLUMB AS IS PRACTICAL.

CONCRETE BULKHEADS
 ALL BULKHEADS SHALL BE CONSTRUCTED WITH GRADE A CONCRETE TO A THICKNESS OF AT LEAST ONE-THIRD THE DIAMETER OF THE PIPE BUT IN NO CASE LESS THAN TWELVE INCHES. SEWER WALLS SHOULD BE BRUSH CLEANED BEFORE CONCRETE BULKHEADS ARE PLACED (THAT IS ALL THE SLEDGE AND DEBRIS SHOULD BE OUT OF THE WAY.)

UTILITY PLAN
SCALE: 1"=30'

NOTE 1: SINCE THE CITY SEWER LOCATED UNDER THIS CATCH BASIN IS TO REMAIN IN SERVICE, CARE MUST BE TAKEN WHEN ABANDONING THE CATCH BASIN SO THAT THE CITY SEWER IS NOT PLUGGED.

NO.	DESCRIPTION	BY	DATE
1	2 C.B. ON ELIOT & 1 C.B. ON THE ALLEY S. ARE TO BE REMAIN	J.P./A.A.	11/7/97
2	RELOCATE PROPOSED M.H.	J.P./A.A.	11/7/97
3	RELOCATE BULKHEAD LOCATION	J.P./A.A.	11/7/97
4	SET RIM ELEV. TO THE PROPOSED M.H.	J.P./A.A.	11/7/97
5	RELOCATE DISCONNECTION & CAPPING OF WATER MAIN ON BENTON ST.	J.P./A.A.	11/7/97
6	INSTALL TEE FOR DISCONNECTION	J.P./A.A.	11/7/97
7	ADD TO THE LEGEND	J.P./A.A.	11/7/97

NO.	DESCRIPTION	BY	DATE
1	PLAN	J.P.	11/7/97
2	GRADE	N.H.	11/7/97
3	ESTIMATE	A.A.	11/7/97
4	FINAL		

CITY OF DETROIT
 CITY ENGINEERING DEPARTMENT
 BUREAU OF STREETS AND HIGHWAYS
 FOR
 PLANNING AND DEVELOPMENT DEPARTMENT

Dadiu Haidas
ENGINEER OF STREETS

STREET AND ALLEY PAVEMENT REMOVAL, ALLEY REPLACEMENT SIDEWALK REMOVAL AND MISCELLANEOUS IN THE AREA BOUNDED BY: BRUSH, BEAUBIEN, ERSKINE AND MACK AVE. HOSPICE OF SOUTHEASTERN MICHIGAN BRUSH PARK AREA


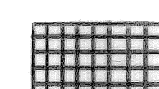

UTILITY PLAN

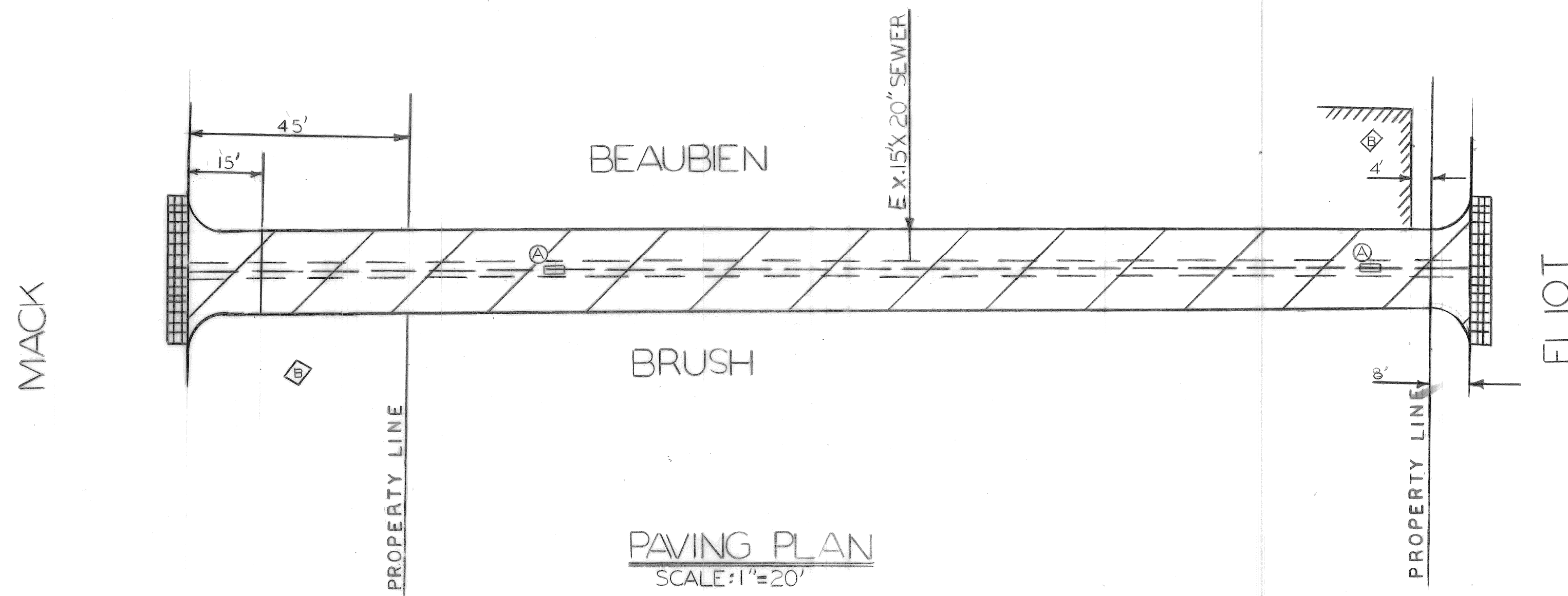
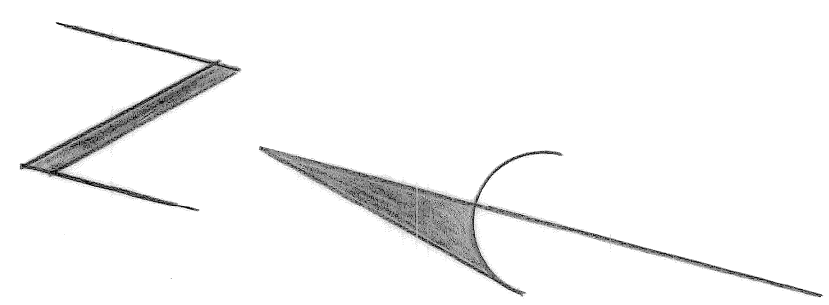
SHEET 3 OF 6 SHEETS
 CONTRACT NO. PW 6843
 ASSIGNMENT NO. 97-14-01
 DATE FEB., 1997

ESTIMATED QUANTITIES FOR USE AT THE DISCRETION OF THE ENGINEER

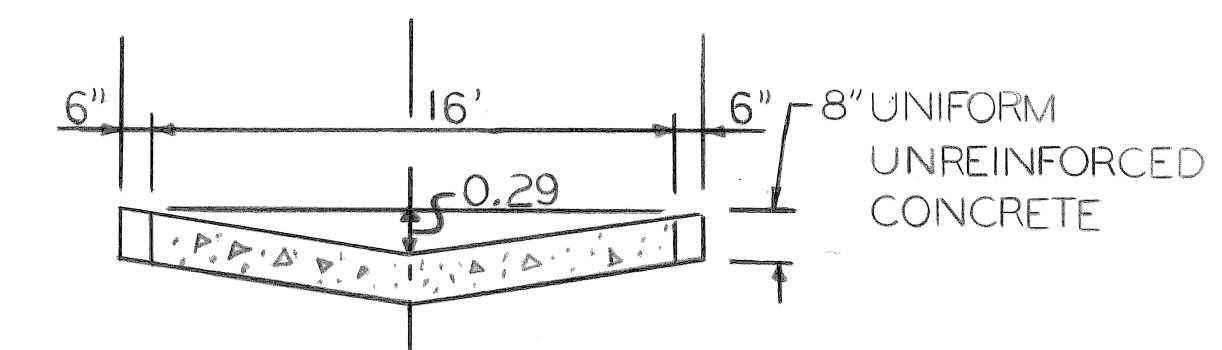
ITEM NO.	DESCRIPTION OF ITEM	QUANTITY & PAY UNIT
1.	SEWER 12" C 76 IV	35 LFT.
2.	CATCH BASIN - NEW 18" X 12" SPECIAL "Y"	2 EACH

LEGEND

-  ALLEY PAVEMENT REMOVAL AND RECONSTRUCTION
-  STRIP AND ADJUST ASPHALT SURFACE
-  ADJUST CATCH BASIN

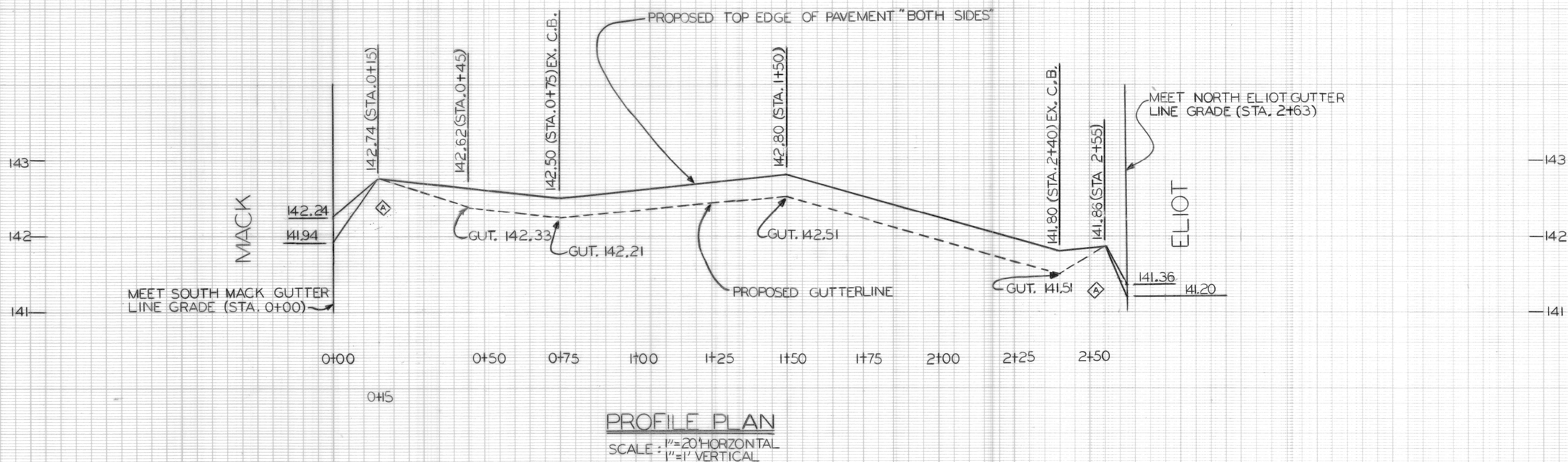


PAVING PLAN
SCALE: 1"=20'

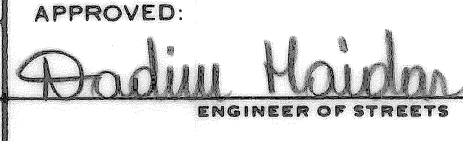


TYPICAL SECTION
NO SCALE

ALSO SEE TYPICAL SECTION ON DETAIL STANDARD NO 19 OF CITY OF DETROIT ALLEY DETAIL PAVING AND DRAINAGE STANDARDS.



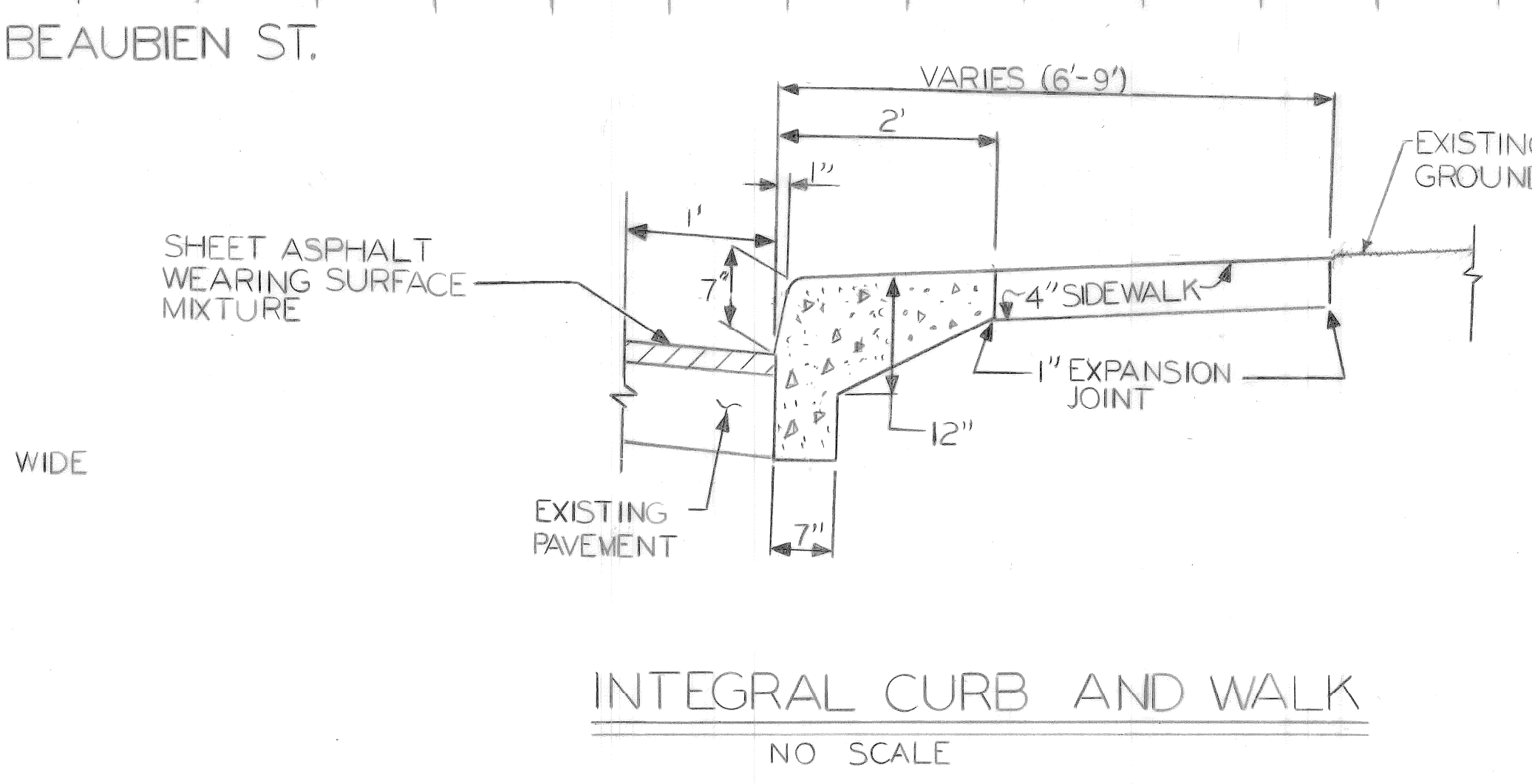
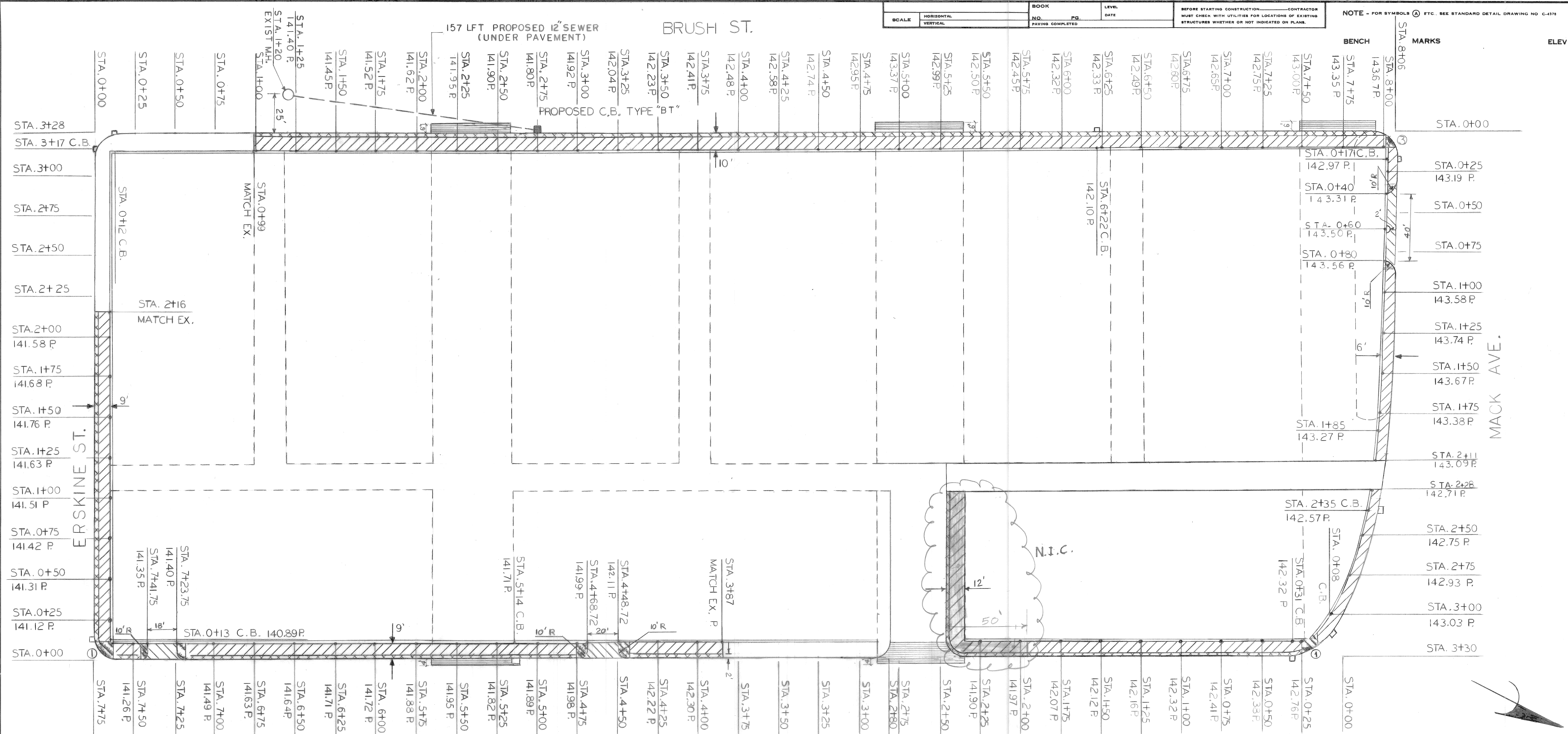
PROFILE PLAN
SCALE: 1"=20' HORIZONTAL
1"=1' VERTICAL

REVISIONS DESCRIPTION DR N CK D AP VD DATE	BY PLAN J.P. GRADE A.A. ESTIMATE FINAL	CHECKED BY N.H. REVIEW	APPROVED:  ENGINEER OF STREETS
--	--	------------------------------	--

CITY OF DETROIT
CITY ENGINEERING DEPARTMENT
BUREAUS OF STREETS AND HIGHWAYS
FOR
PLANNING AND DEVELOPMENT DEPARTMENT

STREET AND ALLEY PAVEMENT REMOVAL, ALLEY REPLACEMENT, SIDEWALK REMOVAL AND MISCELLANEOUS CONSTRUCTION IN THE BOUNDED BY: BRUSH, BEAUBIEN, ERSKINE AND MACK AVE. HOSPICE SOUTHEASTERN OF MICHIGAN - BRUSH PARK AREA
ALLEY PAVING PLAN AND PROFILE PLAN

INDEX NO.	SHEET 4 OF 6 SHEETS
CONTRACT NO.	PW 6843
ASSIGNMENT NO.	97-14-01
DATE	AUGUST 1996



QUANTITIES

ITEM NO.	DESCRIPTION OF WORK	QUANTITY & PAY UNIT
1	STRIP AND ADJUST ASPHALT SURFACE	240 SYD
2	SIDEWALK-4" STANDARD	16150 SFT
3	SIDEWALK-6" STANDARD	650 SFT
4	DRIVEWAY-8" STANDARD	600 SFT
5	INTEGRAL CURB AND 2 FT. WALK	1520 LFT
6	SHEET ASPHALT WEARING SURFACE MIXTURE	20 TON
7	SIDEWALK REMOVAL	1,300 SYD
8	SEPARATE TYPE CURB REMOVAL	1,350 LFT.
9	INTEGRAL TYPE CURB REMOVAL	40 LFT

CONSTRUCTION PLAN
SCALE: 1"=30'

BENCH	LOCATION	ELEVATION
PBM 29-255	N.E. COR. OF WOODWARD AND EDMOND PL.	135.44
PBM 29-255A	N.E. COR. OF JOHN R. AND EDMOND PL.	136.50
CBM #1	HYD. N.E. COR. OF BRUSH AND ERSKINE	143.66
CBM #2	HYD. N.W. COR. OF ELIOT AND BRUSH	145.29
CBM #3	HYD. IN C. OF ISLAND ON MACK AND BEAUBIEN	145.27
CBM #4	HYD. N.E. COR. OF BEAUBIEN AND BENTON	144.39
CBM #1	HYD. N.E. COR. OF BRUSH AND ERSKINE	143.66

PLAN: J.P. GRADE: A.A. ESTIMATE:		CHECKED BY: N.H. REVIEW:		APPROVED:	
DESCRIPTION REVISIONS		DR N CK D AP VO DATE		FINAL CHECK REVIEW	
CITY OF DETROIT CITY ENGINEERING DEPARTMENT BUREAUS OF STREETS AND HIGHWAYS FOR PLANNING AND DEVELOPMENT DEPARTMENT				STREET AND ALLEY PAVEMENT REMOVAL, ALLEY REPLACEMENT, CURB AND SIDEWALK REPLACEMENT AND MISCELLANEOUS CONSTRUCTION IN THE AREA BOUNDED BY: BRUSH, BEAUBIEN, ERSKINE AND MACK AVE. HOSPICE SOUTHEASTERN OF MICHIGAN BRUSH PARK CURB AND WALK PLAN	
SHEET 5 OF 6 SHEETS CONTRACT NO. PW 6843 ASSIGNMENT NO. 97-14-01 DATE JULY 1996					

Q U A N T I T Y S H E E T - E

A S P E R P L A N S

A S C O N S T R U C T E D

ITEMS

ITEMS	SHEET NO'S.		REMOVAL PLAN 2	3	4	SHEET NO'S.	
	TOTALS	UNITS				TOTALS	UNITS
STREET PAVEMENT REMOVAL	2500	SYD	2500				
ALLEY PAVEMENT REMOVAL	2400	SYD	2400				
SIDEWALK REMOVAL	11400	SFT	11400				
DRIVEWAY REMOVAL	500	SFT	500				
SEWER BULKHEAD	3	EACH		3			
WATERMAIN PLUG OR CAP	4	EACH		4			
STREETCAR RAIL REMOVAL	880	LFT	880				
STREETCAR TRACK BASE REMOVAL	350	SYD	350				
CATCH BASIN REMOVAL	3	EACH		3			
CATCH BASIN-SPECIAL ABANDONMENT	6	EACH		6			
MANHOLE-STANDARD	3	EACH		3			
MANHOLE ADJUSTMENT	3	EACH		3			
CATCH BASIN ADJUSTMENT	2	EACH		2			
STOPBOX REMOVAL	8	EACH		8			
MANHOLE REMOVAL	1	EACH		1			
REMOVE FIRE HYDRANT METHOD I	2	EACH		2			
REMOVE FIRE HYDRANT METHOD II	1	EACH		1			
FIRE HYDRANT	3	EACH		3			
PROPOSED CATCH BASIN TYPE "BT"	1	EACH		1			
CATCH BASIN-NEW 18'X12" SPECIAL "Y"	2	EACH			2		
SEWER 12"-C76 IV	35	LFT			35		
SEWER 12"-C76 IV (UNDER PAVEMENT)	157	LFT		157			
SELECTED EXCAVATED MATERIAL	100	SYD			100		
FILL 21A	75	CYD					
CONCRETE PAVEMENT NONREINFORCED - 8"	500	SYD			500		
STRIP & ADJUST ASPHALT SURFACE	25	SYD			25		
PORTABLE BARRICADE	16	EACH	16				
MAINTAINING TRAFFIC	1	LSUM					
FOR THE CURB & WALK QUANTITIES: SEE SHEET NO. 6							