

SCALE	HORIZONTAL	BOOK NO.	PG.	LEVEL DATE	BEFORE STARTING CONSTRUCTION CONTRACTOR MUST CHECK WITH UTILITIES FOR LOCATIONS OF EXISTING STRUCTURES WHETHER OR NOT INDICATED ON PLANS.
	VERTICAL	PAVING COMPLETED			

- BARRICADE TYPE III, LIGHTED
- BARRICADE TYPE II, LIGHTED
- ↑ LIGHTED ARROW TYPE A
- ⊥ SIGN, TYPE B TEMPORARY

- CONSTRUCTION SEQUENCE LEGEND
- ▨ STAGE I PAVEMENT
  - ▩ STAGE II PAVEMENT
  - EXISTING PAVEMENT

CONSTRUCTION SEQUENCE STAGE I

CONSTRUCTION SEQUENCE STAGE II

PLAN	BY M.K.	CHECKED BY	APPROVED: <i>Darius Haidar</i>
GRADE			
ESTIMATE			
DESCRIPTION	DR	CHK	DATE
REVISIONS	FINAL	N.W.	

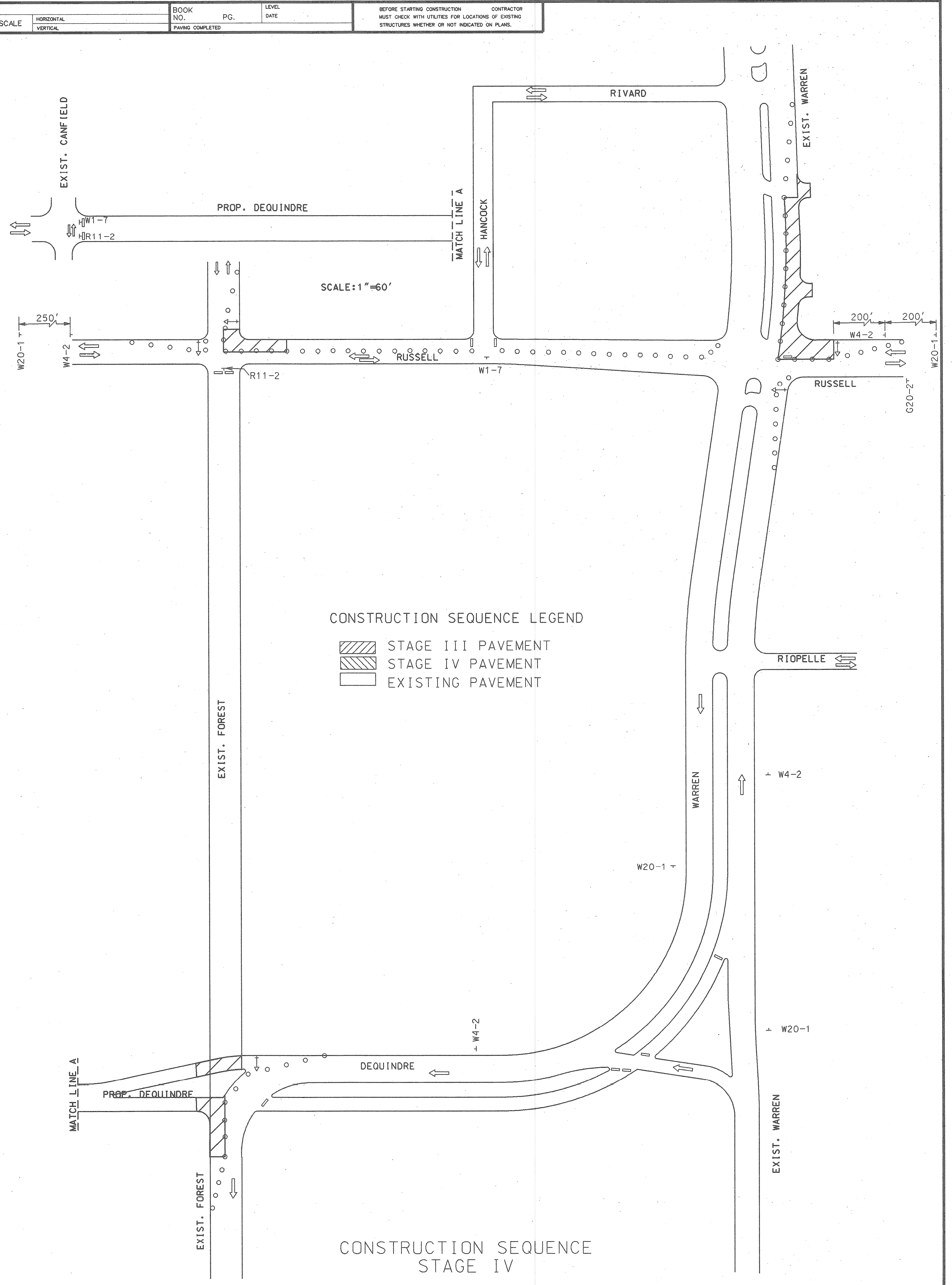
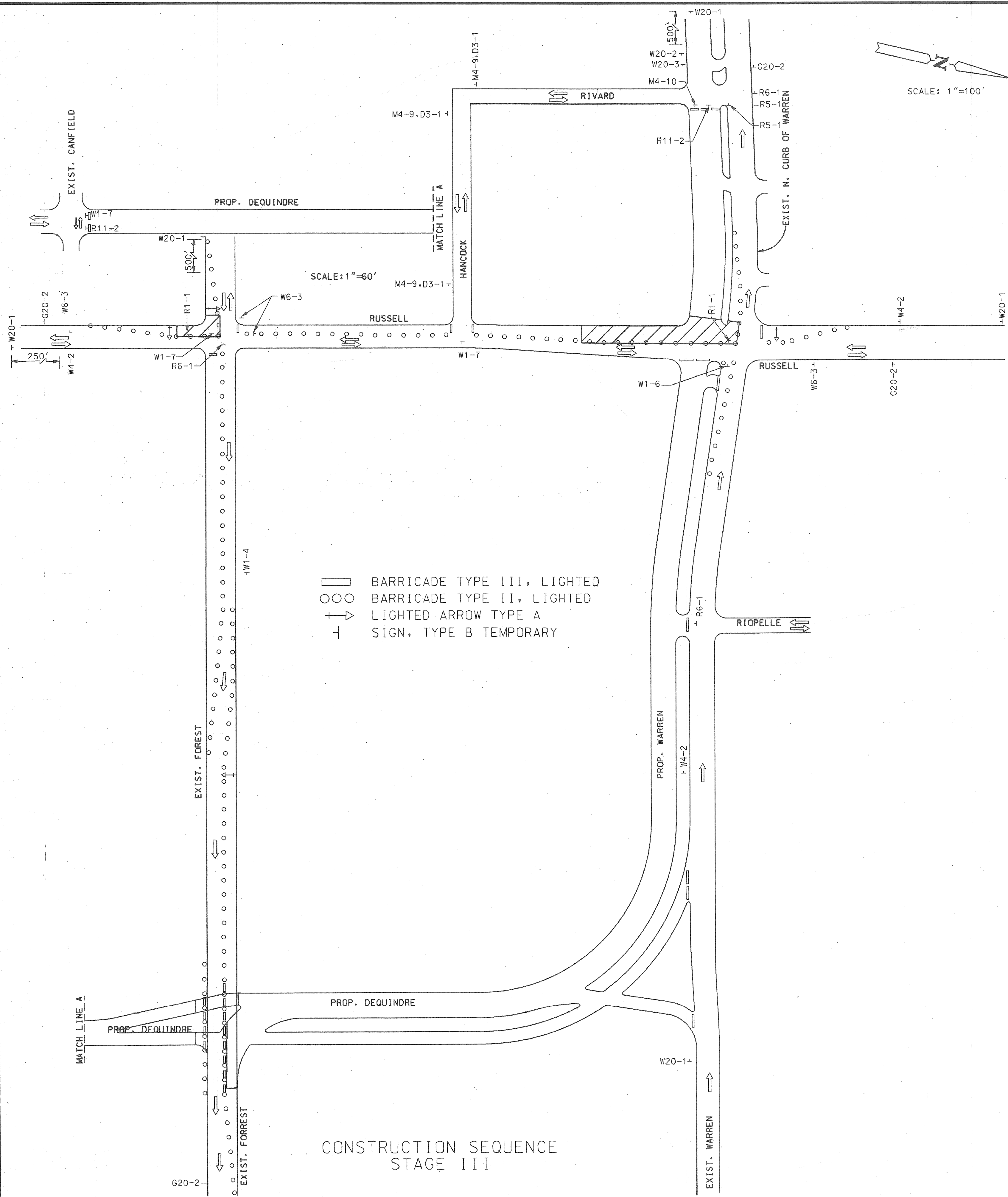
CITY OF DETROIT  
 CITY ENGINEERING DIVISION - D.P.W.  
 BUREAU OF STREETS AND HIGHWAYS

PAVING OF DEQUINDRE FROM CANFIELD TO WARREN,  
 WARREN FROM DEQUINDRE TO RIVARD, RUSSELL FROM FOREST  
 TO WARREN, AND MISCELLANEOUS CONSTRUCTION.  
 FOREST PARK REHABILITATION PROJECT

OBsolete CONSTRUCTION SEQUENCE

SHEET 9 OF 80 SHEETS
CONTRACT NO.
ASSIGNMENT NO. 90-14-06
DATE JUNE, 1997

SCALE	HORIZONTAL	BOOK NO.	PG.	LEVEL	DATE	BEFORE STARTING CONSTRUCTION CONTRACTOR MUST CHECK WITH UTILITIES FOR LOCATIONS OF EXISTING STRUCTURES WHETHER OR NOT INDICATED ON PLANS.
	VERTICAL	PAVING COMPLETED				



DESCRIPTION	DR	CHK	DATE	DATE
REVISIONS				
PLAN	M.K.			
GRADE				
ESTIMATE				
FINAL	N.W.			

CITY OF DETROIT  
CITY ENGINEERING DIVISION - D.P.W.  
BUREAU OF STREETS AND HIGHWAYS

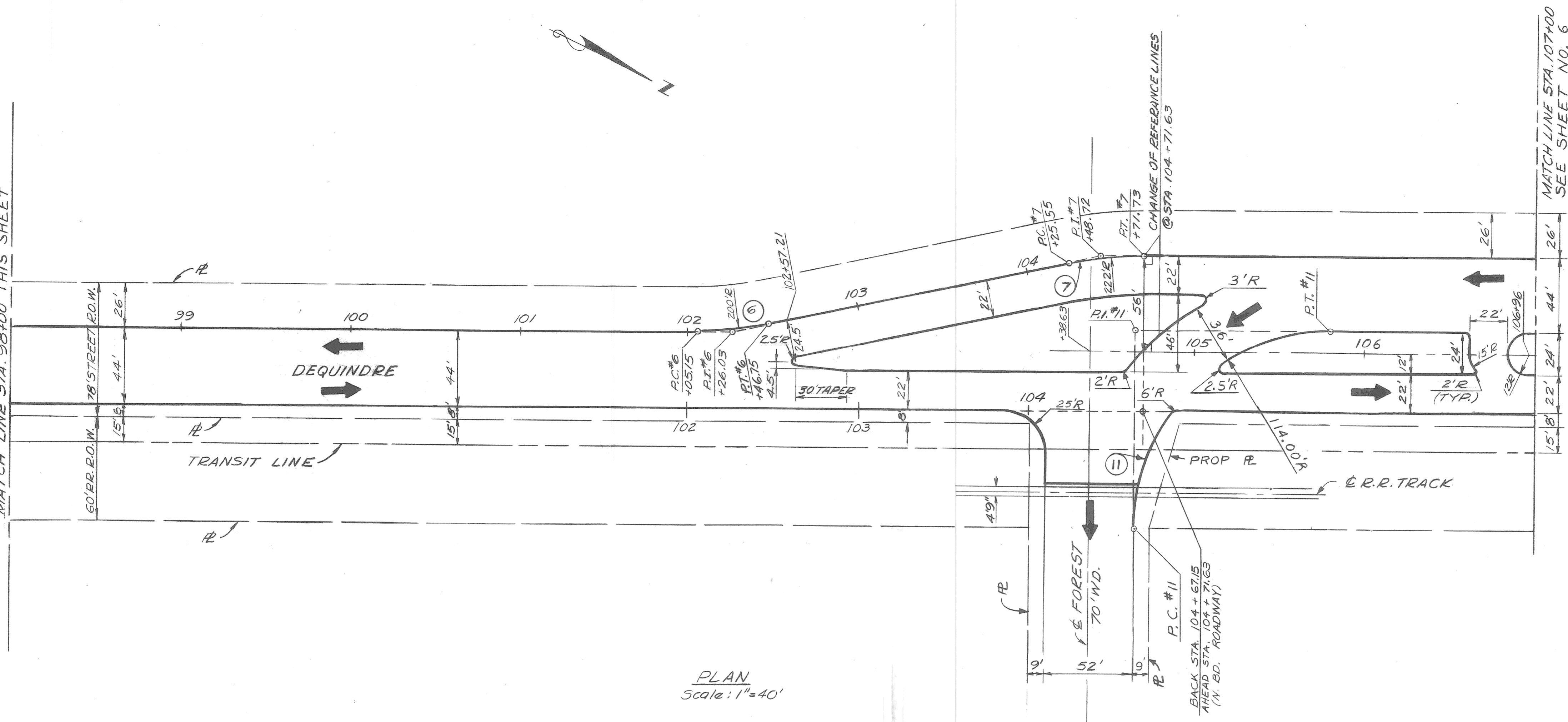
PAVING OF DEQUINDRE FROM CANFIELD TO WARREN,  
WARREN FROM DEQUINDRE TO RIVARD, RUSSELL FROM FOREST  
TO WARREN, AND MISCELLANEOUS CONSTRUCTION.  
FOREST PARK REHABILITATION PROJECT

OBSOLETE CONSTRUCTION SEQUENCE

SHEET 10 OF 80 SHEETS
CONTRACT NO.
ASSIGNMENT NO. 90-14-06
DATE JUNÉ, 1997



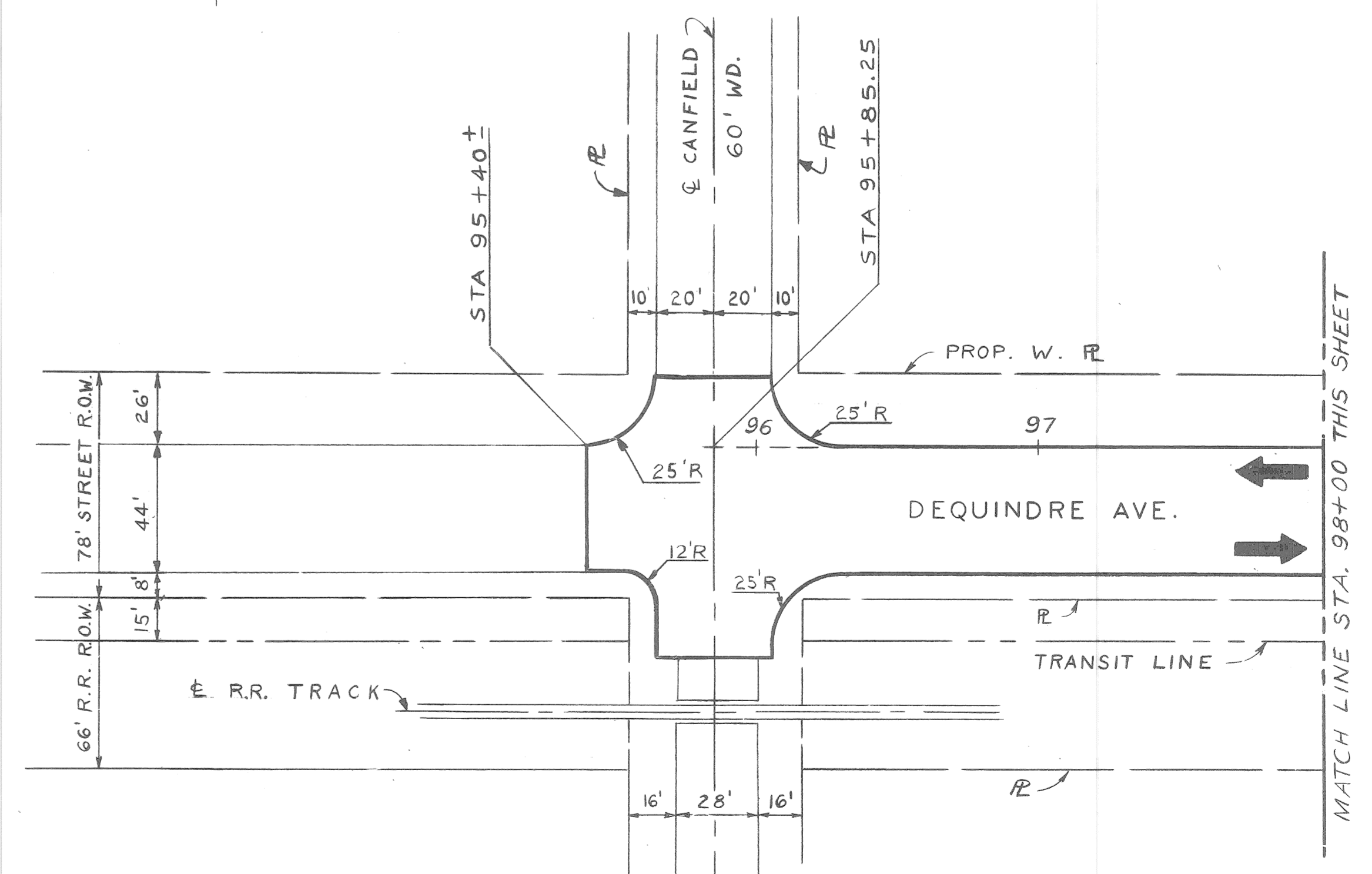
MATCH LINE STA. 98+00 THIS SHEET



**CURVE #6**  
 $\Delta = 11^{\circ}55'03.6''$   
 $D = 28^{\circ}38'52.4''$   
 $R = 200'$   
 $T = 20.88'$   
 $L = 41.60'$   
 $E = 1.09'$   
 $P.C. = 102+05.15$   
 $P.I. = 102+26.03$   
 $P.T. = 102+46.75$

**CURVE #7**  
 $\Delta = 11^{\circ}55'03.6''$   
 $D = 25^{\circ}48'32.1''$   
 $R = 222'$   
 $T = 23.17'$   
 $L = 46.18'$   
 $E = 1.21'$   
 $P.C. = 104+25.45$   
 $P.I. = 104+48.62$   
 $P.T. = 104+71.63$

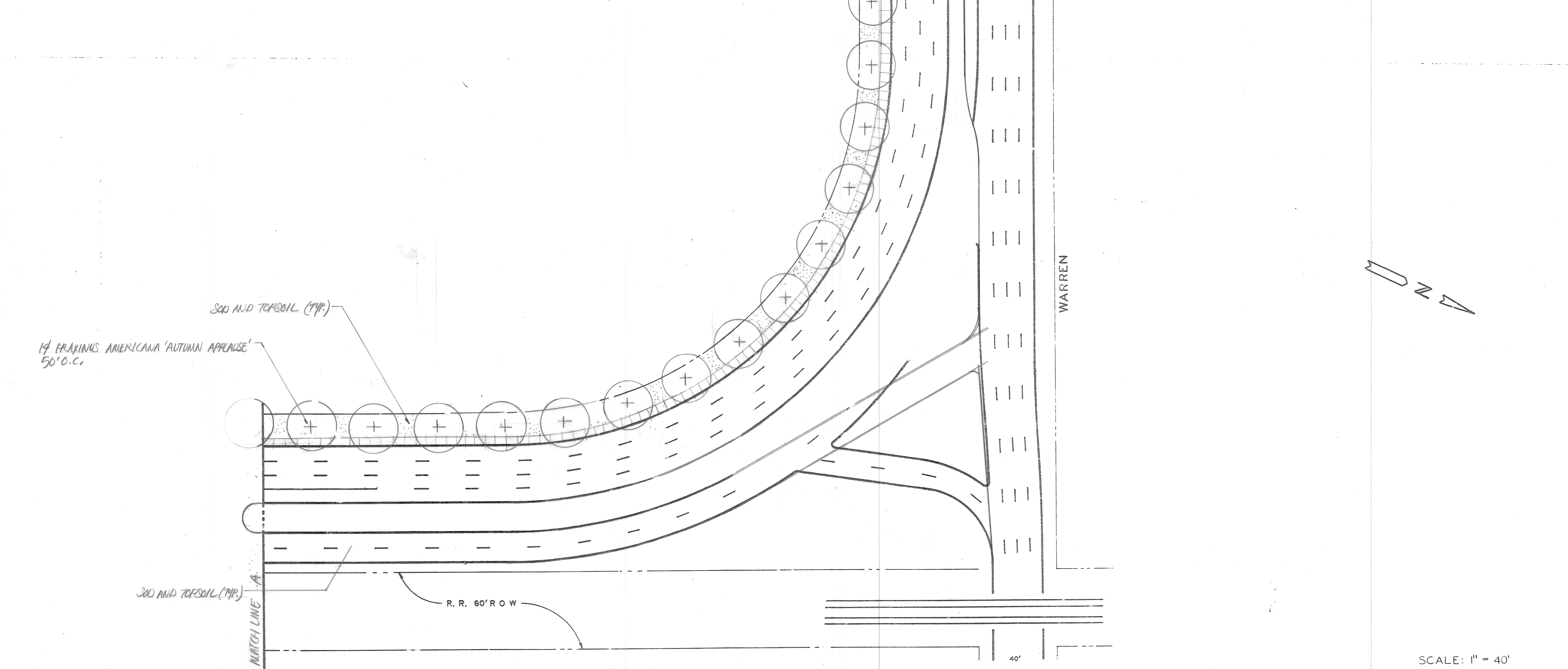
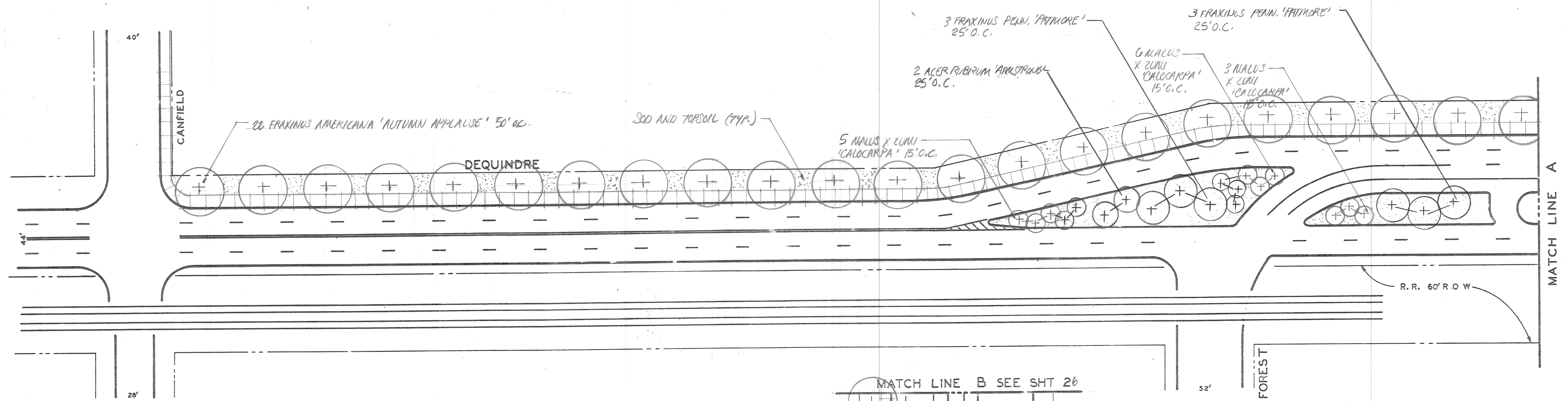
**CURVE #11**  
 $\Delta = 89^{\circ}56'07.4''$   
 $D = 50^{\circ}-15'-36.3''$   
 $R = 114'$   
 $T = 113.87'$   
 $L = 178.94'$   
 $E = 47.13'$   
 $P.C. = 1+00.00$   
 $P.I. = 2+13.87$   
 $P.T. = 2+79.94 = 105+78.50$



MATCH LINE STA. 98+00 THIS SHEET

<p>DESIGNED BY: <i>J. NOX</i></p> <p>DRAWN BY: <i>J. NOX</i></p> <p>TRACED BY:</p> <p>CHECKED BY: <i>N. W.</i></p>		<p>APPROVED:</p> <p><i>Darius Haidor</i> ENGINEER OF STREETS</p> <p>HIGHWAY ENGINEER</p>	<p>CITY OF DETROIT CITY ENGINEERING DIVISION - D. P. W. BUREAU OF STREETS AND HIGHWAYS</p> <p>OBSOLETE (?)</p>	<p>PAVING OF DEQUINDRE FROM CANFIELD TO WARREN WARREN FROM DEQUINDRE TO RIVARD, RUSSELL FROM FOREST TO WARREN AND MISCELLANEOUS CONSTRUCTION FOREST PARK REHABILITATION PROJECT</p> <p>ALIGNMENT - CANFIELD TO STA. 107+00</p>	<p>SHEET 5 OF 80 SHEETS</p> <p>CONTRACT NO.</p> <p>ASSIGNMENT NO. 90-14-06</p> <p>DATE JUNE, 1997</p>
--	--	--	--	--	---



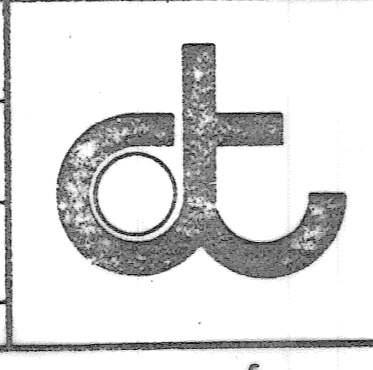


SCALE: 1" = 40'

COORD	DESCRIPTION	DRW	CHKD	APPRD	DATE
	REVISED MEDIAN PLANTINGS	AK	AK	AK	11/97
REVISIONS LOCATED BY COORDINATES ON SHEET					

DESIGNED BY	C.S.
DRAWN BY	Δ Brown
TRACED BY	
CHECKED BY	

APPROVED  
*Dadun Haidar*

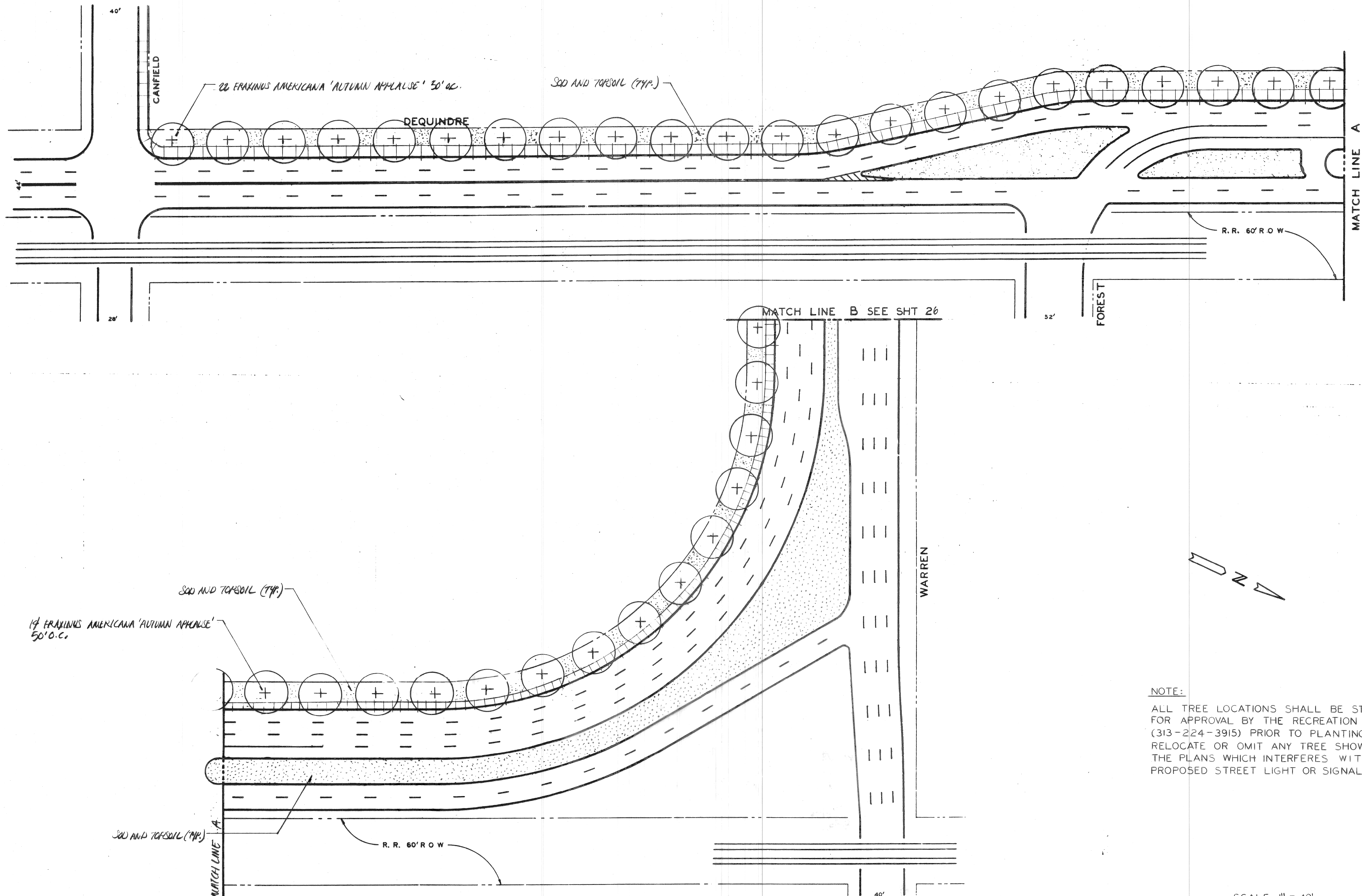


CITY OF DETROIT  
 RECREATION DEPARTMENT

OBSOLETE  
**DEQUINDRIE**  
 CANFIELD TO WARREN  
 LANDSCAPING

SHEET 28 OF 80 SHEETS  
 A.O. NO. 90-14-06  
 DATE JUNE, 1997





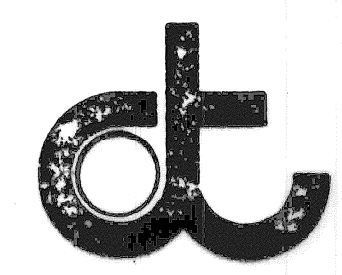
NOTE:  
 ALL TREE LOCATIONS SHALL BE STAKED FOR APPROVAL BY THE RECREATION DEPT. (313-224-3915) PRIOR TO PLANTING. RELOCATE OR OMIT ANY TREE SHOWN ON THE PLANS WHICH INTERFERES WITH A PROPOSED STREET LIGHT OR SIGNAL LIGHT.

SCALE: 1" = 40'

NO.	DATE	DESCRIPTION

DESIGNED BY	C.S.
DRAWN BY	ΔBrown
TRACED BY	
CHECKED BY	

APPROVED	

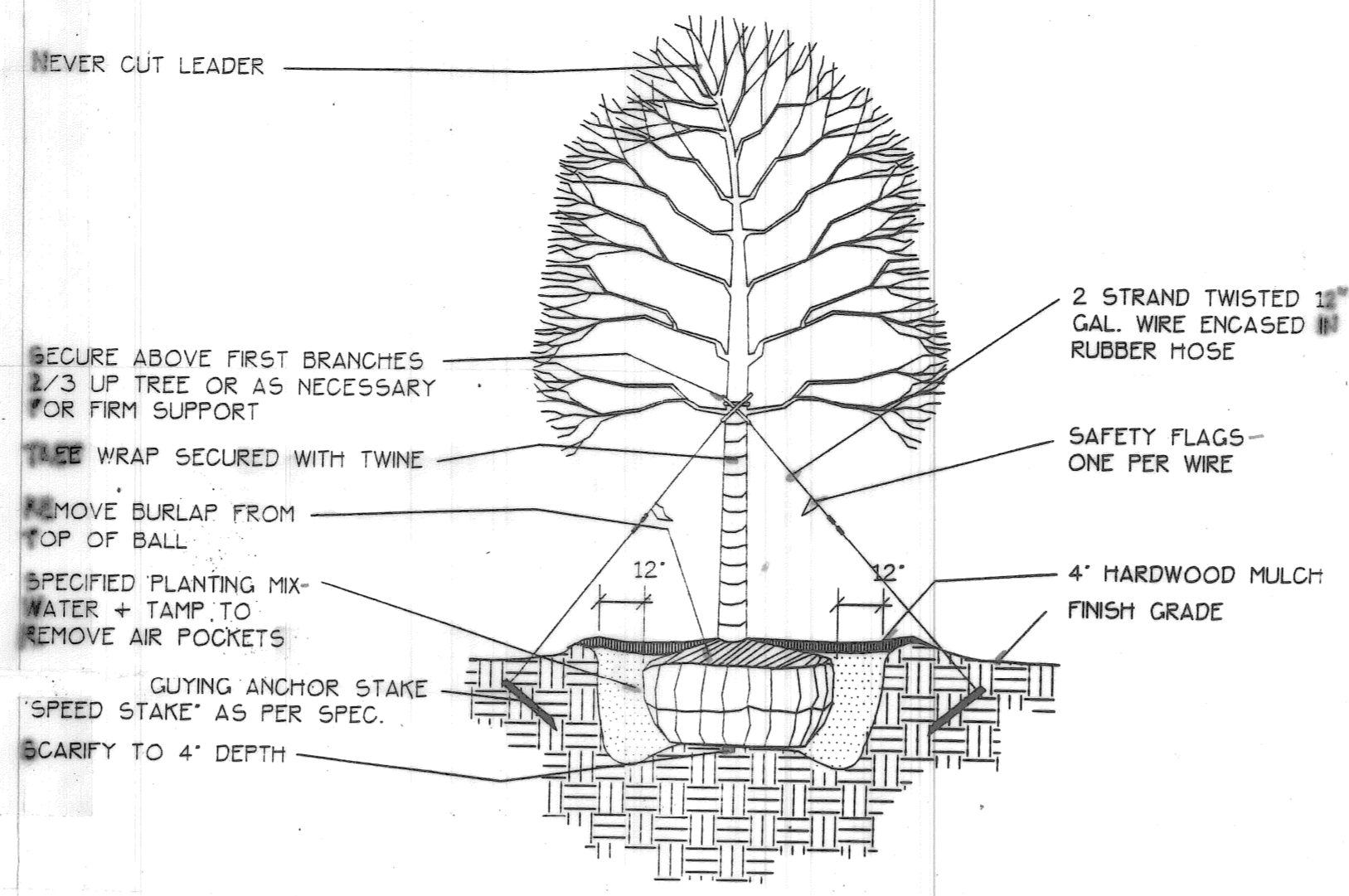
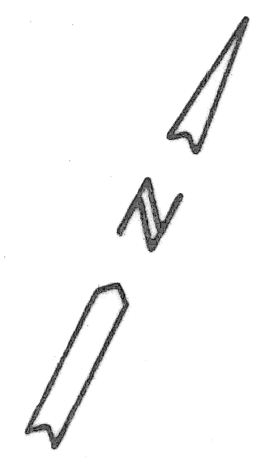


CITY OF DETROIT  
 RECREATION DEPARTMENT

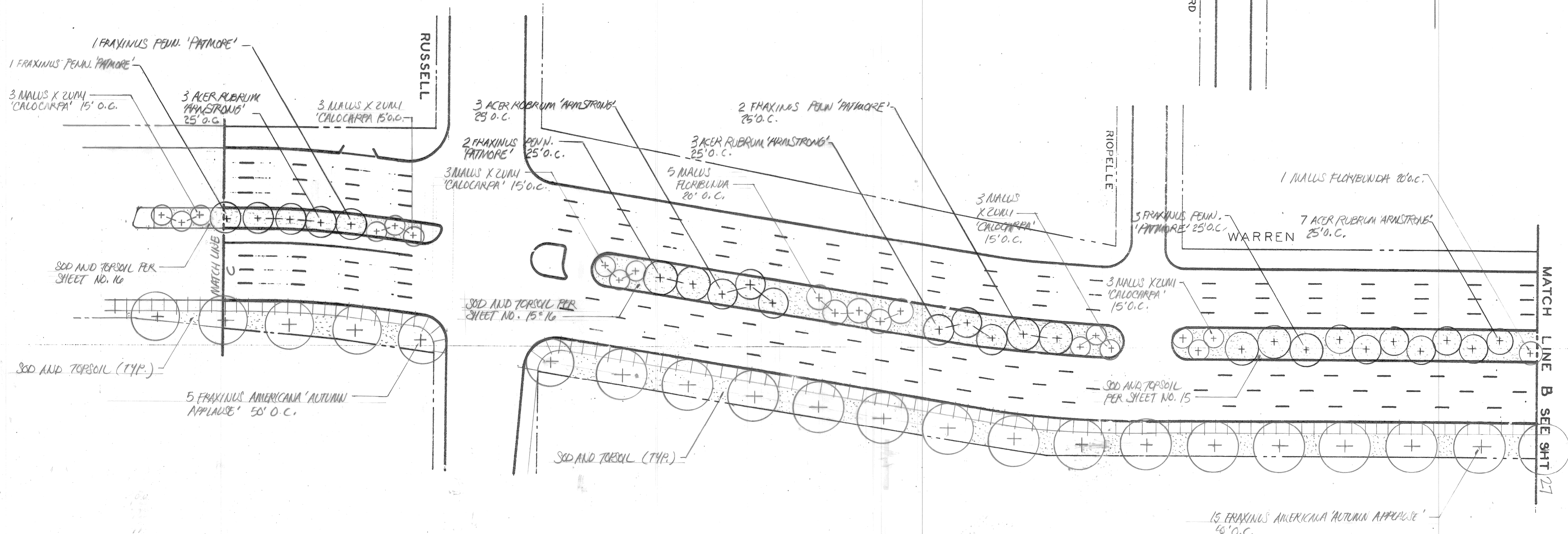
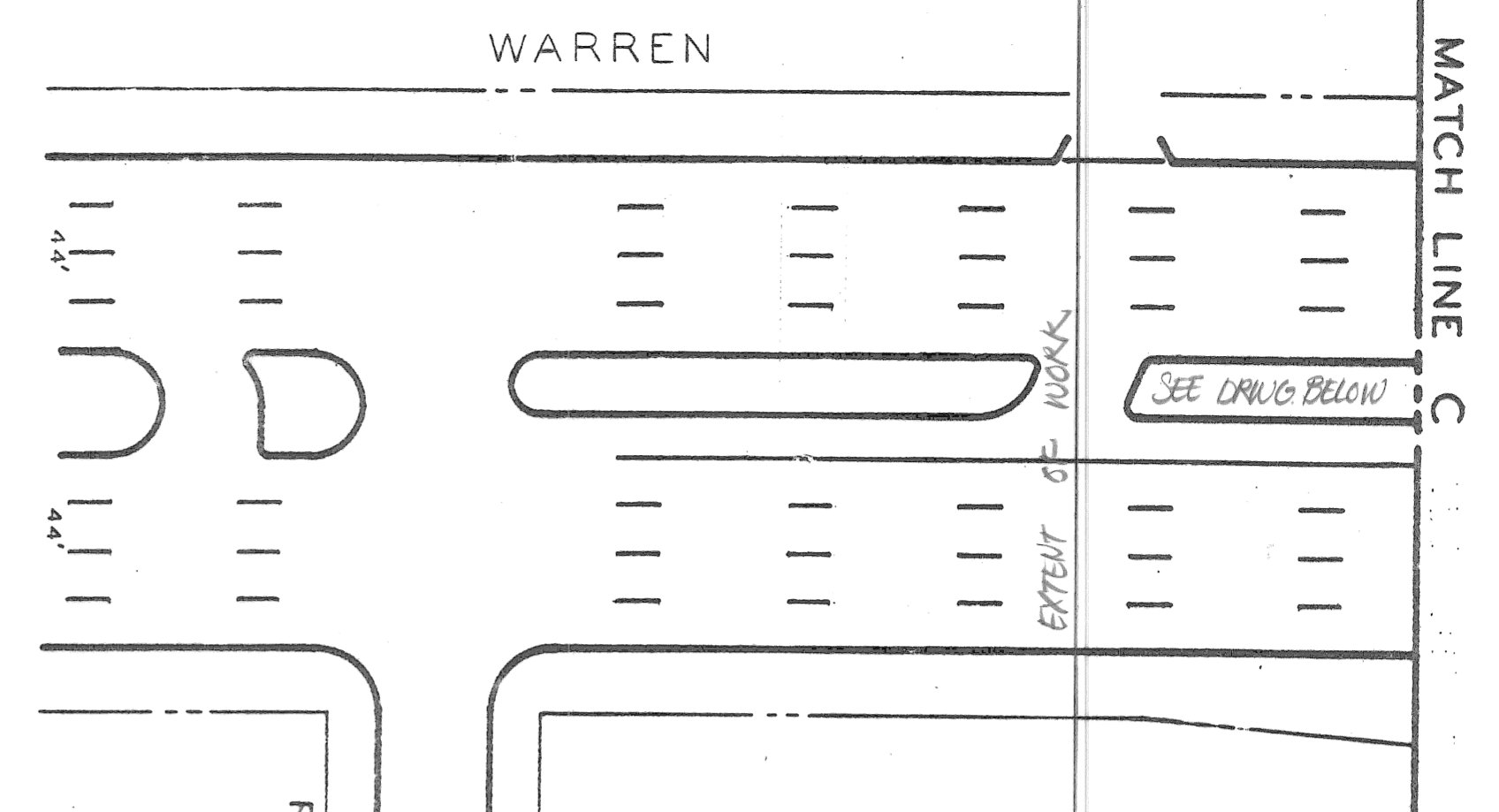
DEQUINDRE  
 CANFIELD TO WARREN  
 LANDSCAPING

SHEET 28 OF 80 SHEETS
PW-6840
A.O. NO: 90-14-06
DATE APRIL, 1998





TREE PLANTING DETAIL



PLANT NAME & SIZE	QTY
1. Acer rubrum 'Armstrong', 3" cal.	35
2. Fraxinus americana 'Autumn Applause', 3" cal.	56
3. Fraxinus pennsylvanica 'Palmore', 3" cal.	24
4. Malus floribunda, 2 1/2" cal.	29
5. Malus x zumi 'Calocarpa', 2 1/2" cal.	47

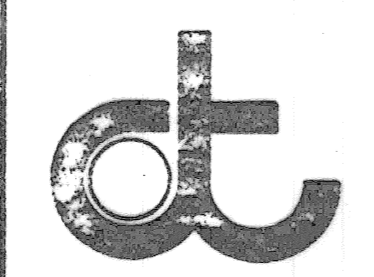
\* ALL TREES TO BE CALLED & BURLAPPED

SCALE: 1" = 40'

NO.	DATE	DESCRIPTION
1	05/14/97	REVISED MECHANICAL PLANTINGS
2	05/14/97	FOR RIVARD
3	05/14/97	FOR RIVARD

DESIGNED BY	C.S.
DRAWN BY	Δ Brown
TRACED BY	
CHECKED BY	

APPROVED  
*Dadini Haidar*

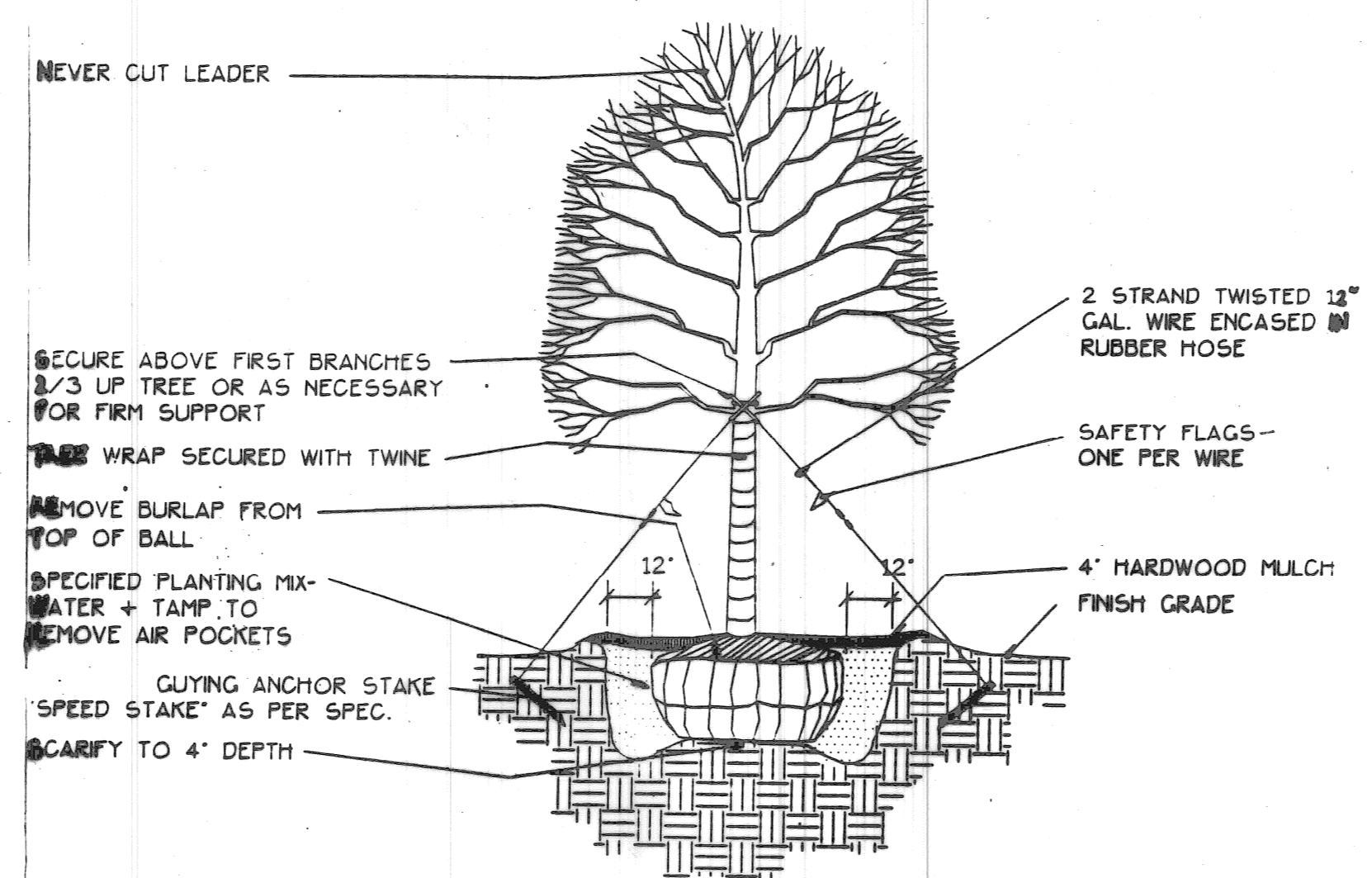
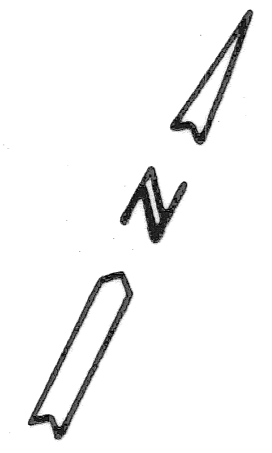


CITY OF DETROIT  
RECREATION DEPARTMENT

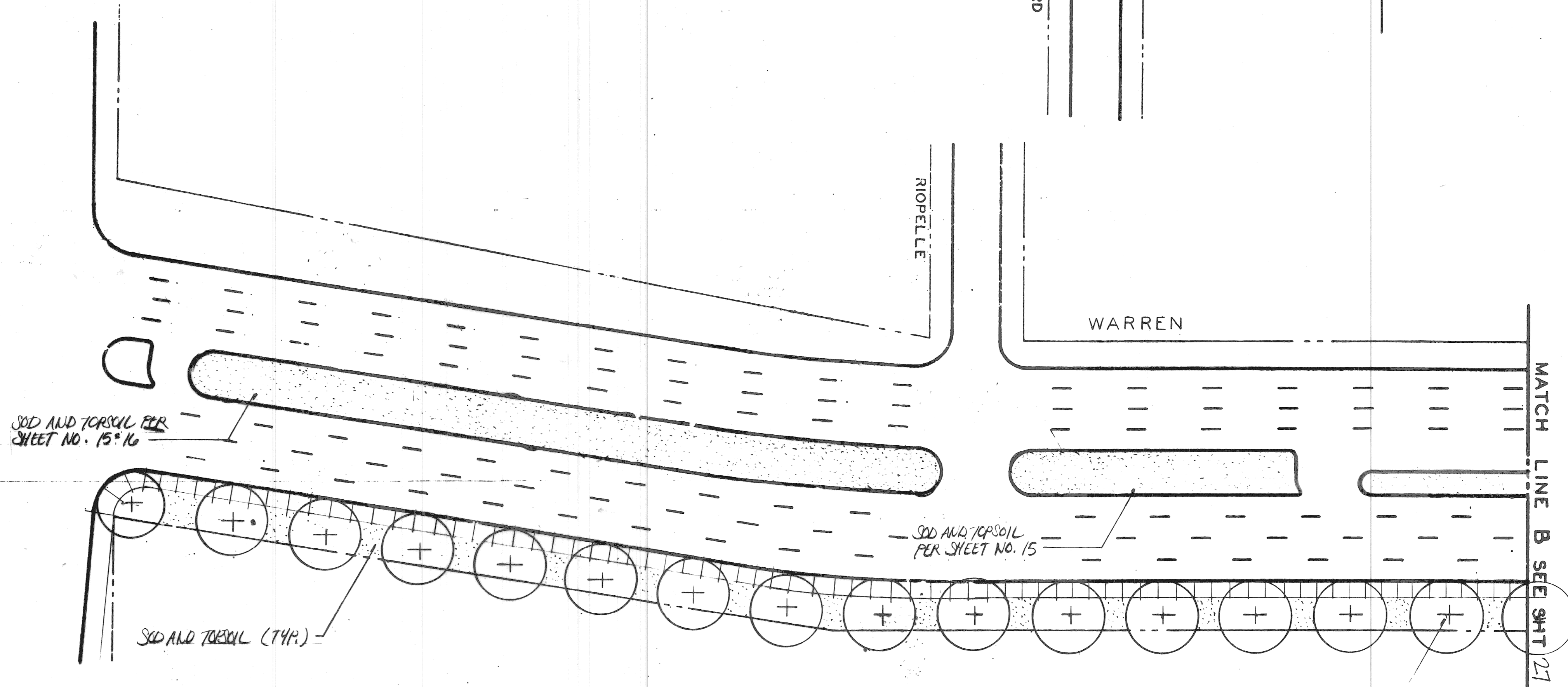
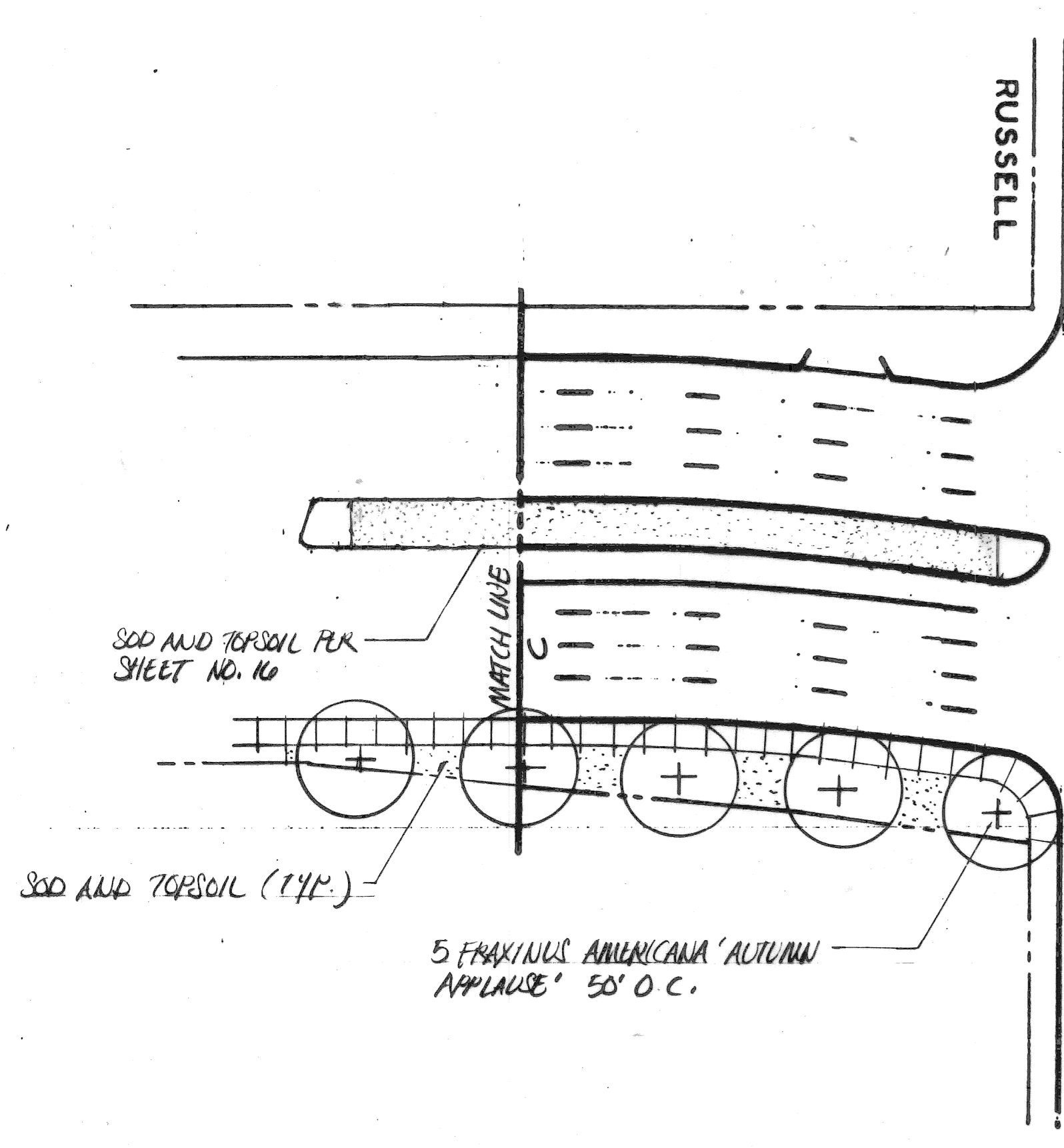
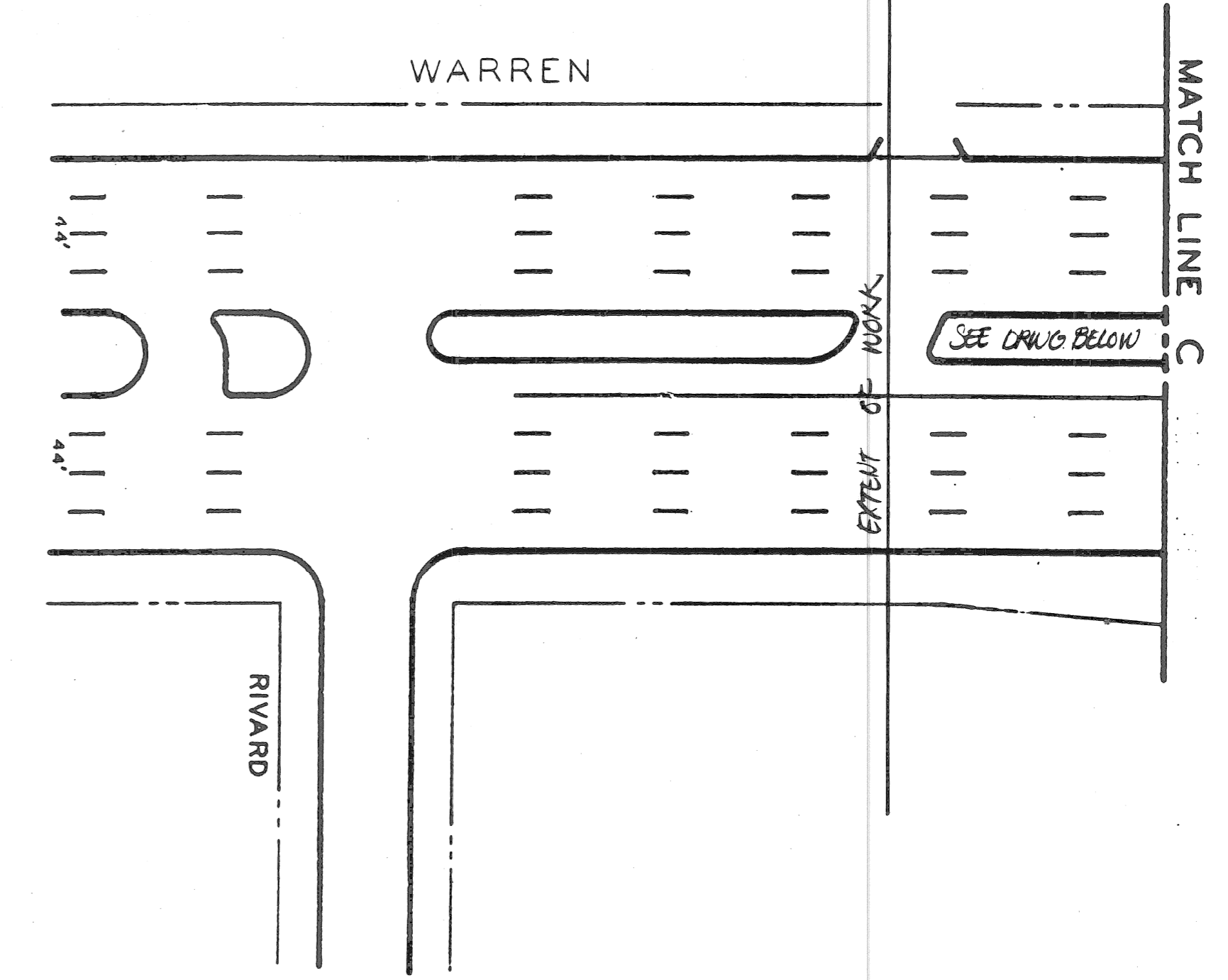
OBSOLETE

WARREN  
DEQUINDRE TO RIVARD  
LANDSCAPING





TREE PLANTING DETAIL



PLANT NAME & SIZE	QTY
1. Fraxinus americana 'Autumn Applause', 3" cal.	25
2. Fraxinus americana 'Autumn Applause', 3" cal.	56
3. Fraxinus pennsylvanica 'Pumore', 3" cal.	24
4. Fraxinus pennsylvanica 'Pumore', 3" cal.	24
5. Fraxinus pennsylvanica 'Pumore', 3" cal.	24
6. Fraxinus pennsylvanica 'Pumore', 3" cal.	24

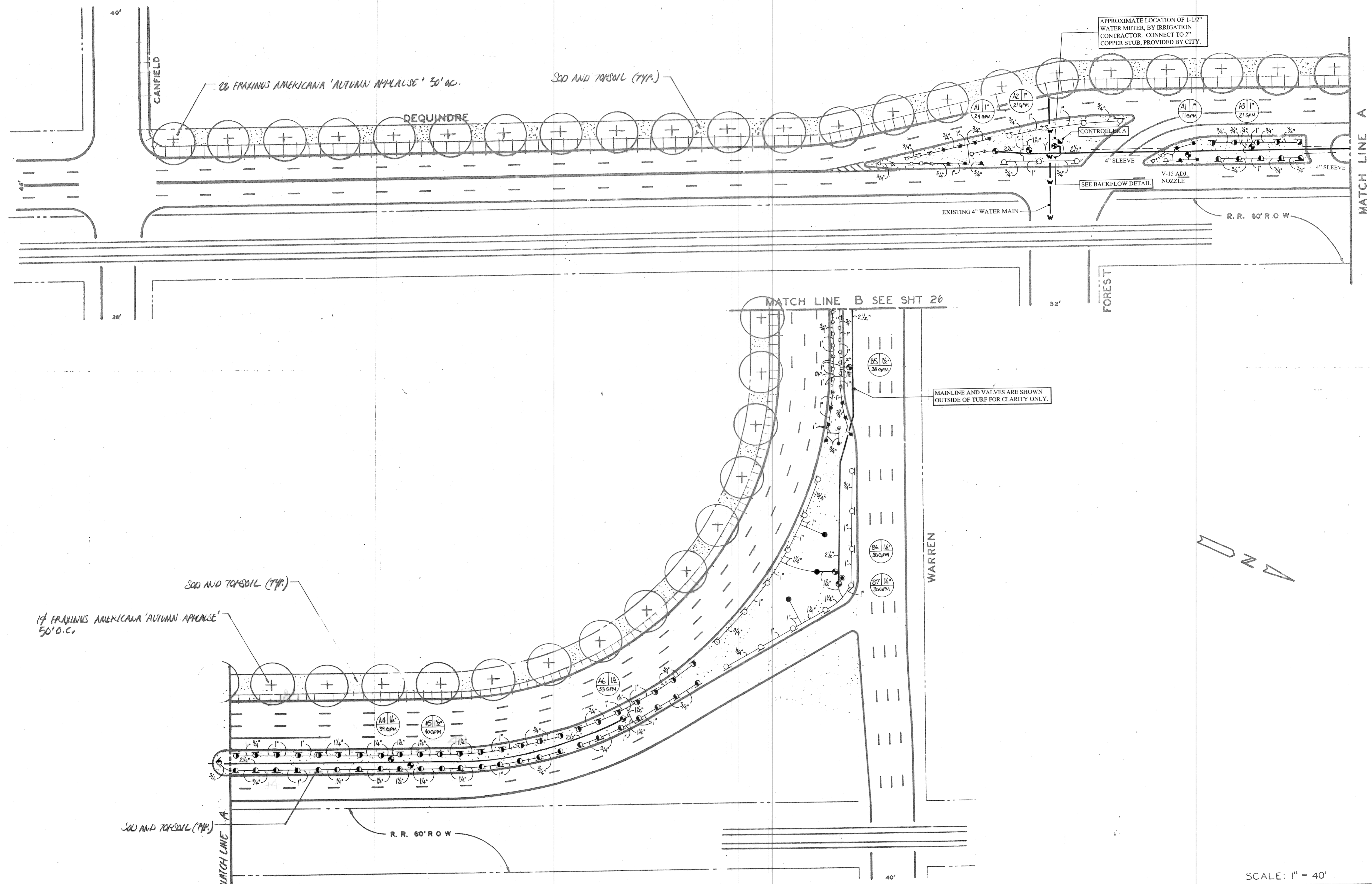
\* ALL TREES TO BE CALLED & BURLAPPED

SEE NOTE ON SHEET 28.

SCALE: 1" = 40'

<table border="1"> <tr> <td>DESIGNED BY</td> <td>C.S.</td> </tr> <tr> <td>DRAWN BY</td> <td>Δ Brown</td> </tr> <tr> <td>TRACED BY</td> <td></td> </tr> <tr> <td>CHECKED BY</td> <td></td> </tr> </table>	DESIGNED BY	C.S.	DRAWN BY	Δ Brown	TRACED BY		CHECKED BY		<p>CITY OF DETROIT RECREATION DEPARTMENT</p>	<p>WARREN DEQUINDRE TO RIVARD LANDSCAPING</p>	<p>SHEET 29 OF 80 SHEETS PW-6840 A.O. NO. 90-14-06 DATE APRIL, 1998</p>
DESIGNED BY	C.S.										
DRAWN BY	Δ Brown										
TRACED BY											
CHECKED BY											





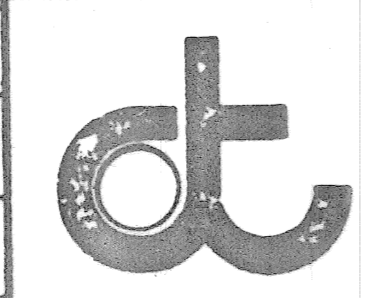
SCALE: 1" = 40'

NO.	DATE	DESCRIPTION
1	12/97	MEDIAN PLANTINGS REVISED
2	1/98	REVISED MEDIAN PLANTINGS

REVISIONS LOCATED BY COORDINATES ON SHEET

DESIGNED BY	C.S.
DRAWN BY	Δ Brown
TRACED BY	
CHECKED BY	

APPROVED	
----------	--



CITY OF DETROIT  
RECREATION DEPARTMENT

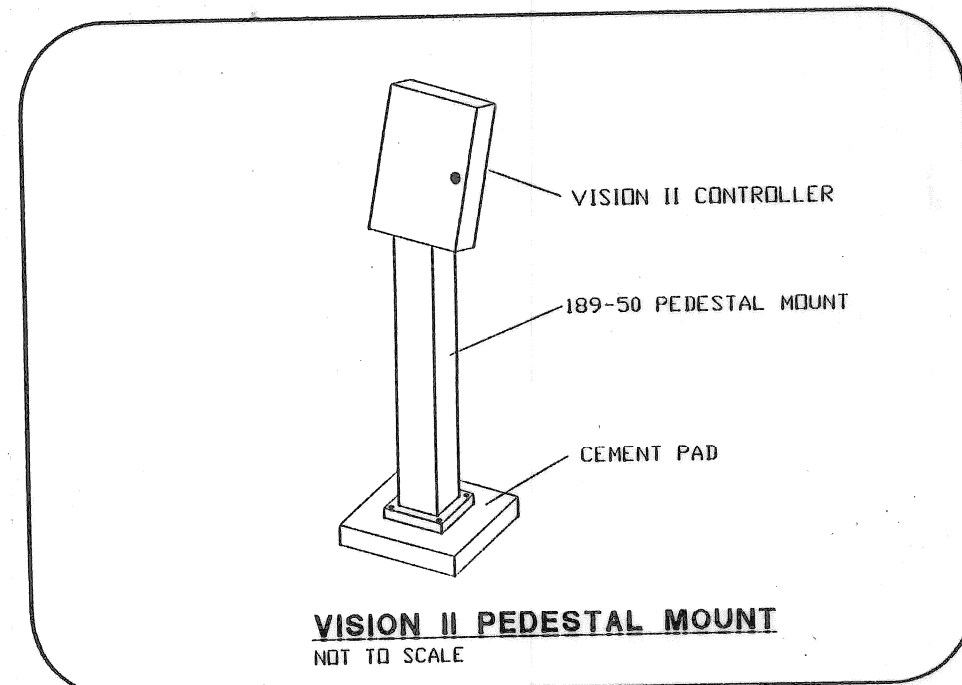
DEQUINDRE  
CANFIELD TO WARREN  
LAWN IRRIGATION PLAN

SHEET 30 OF 80 SHEETS
PW-6840
A.O. NO. 90-14-06
DATE APRIL, 1998



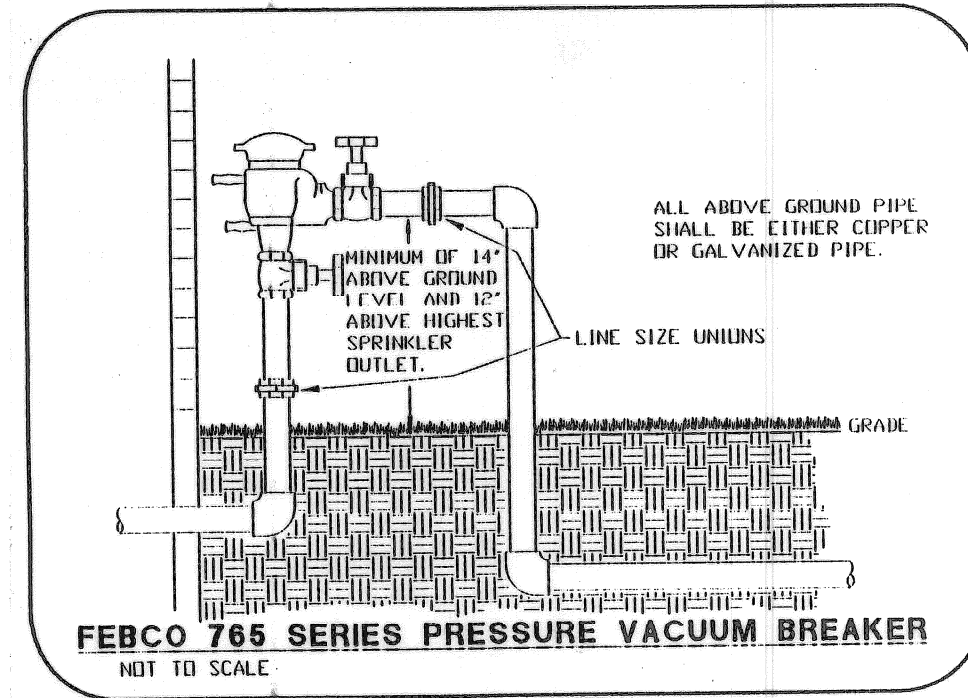




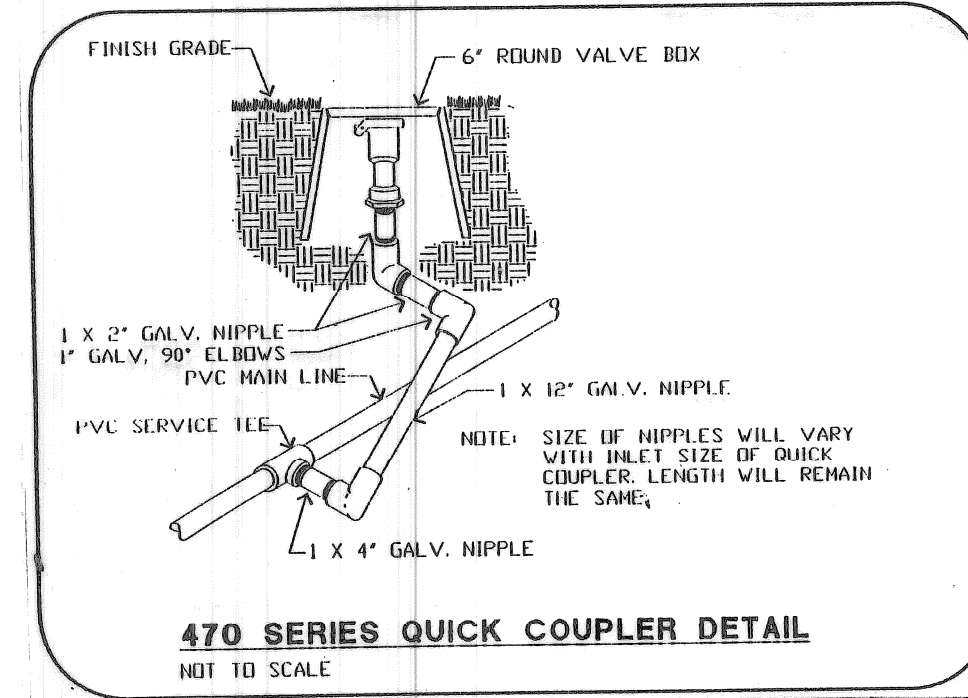


**VISION II CONTROLLER**

HYBRID CONTROLLER WITH ELECTROMECHANICAL PROGRAMMING, SOLID STATE PRECISION AND FEATURES, STATION RUN TIMES 1 - 90 MINUTES OR 10 MINUTES - 9 HOURS (ALL STATIONS), DUAL PROGRAMMING, WATER ADJUST 25% - 200%, NON VOLATILE MEMORY RETAINS PROGRAM WITHOUT BATTERIES, TERMINAL STRIP "HOT POST" FOR EASY VALVE IDENTIFICATION, LOCKING OUTDOOR METAL CABINET AND OPTIONAL PEDESTAL.

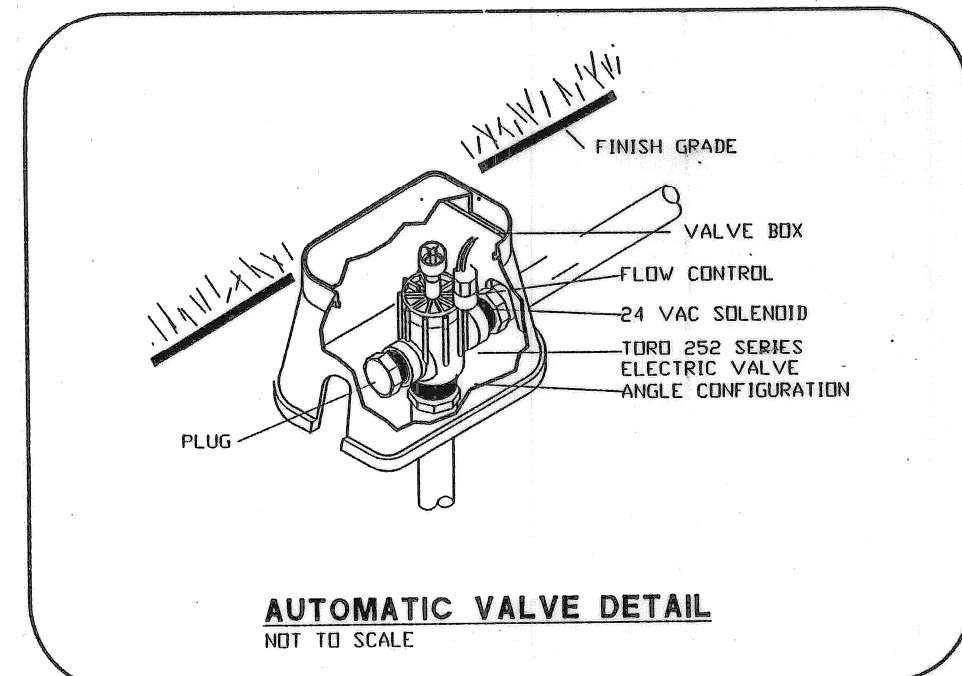


**FEBCO 765 SERIES PRESSURE VACUUM BREAKER**  
NOT TO SCALE



**474-01**

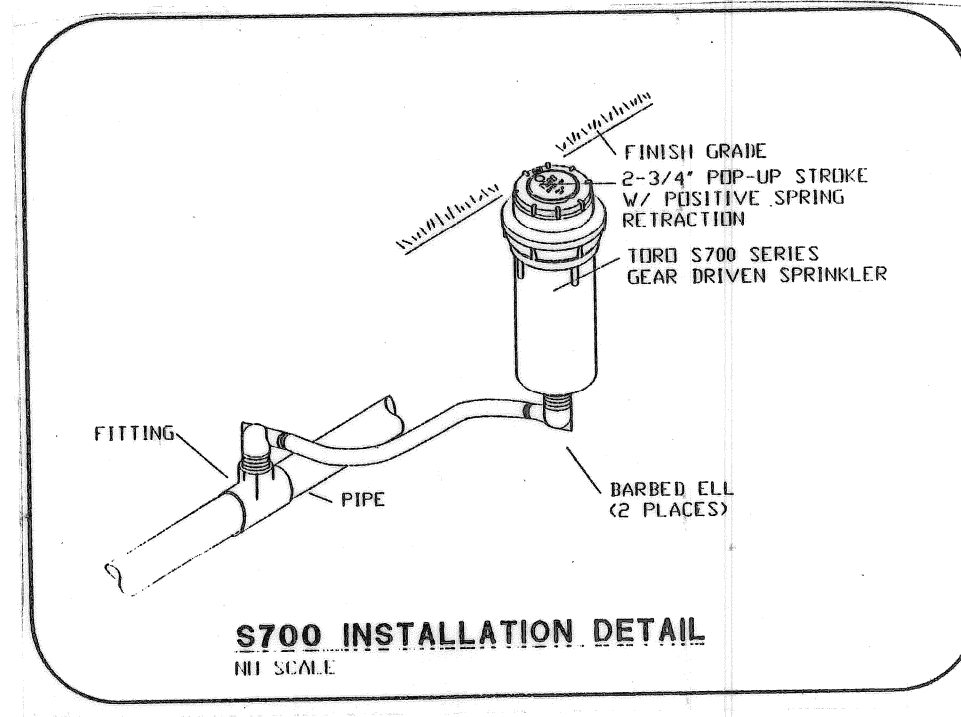
1" QUICK COUPLING VALVE WITH ONE-PIECE HEAVY DUTY BRASS CONSTRUCTION, YELLOW VINYL COVER.



**AUTOMATIC VALVE DETAIL**  
NOT TO SCALE

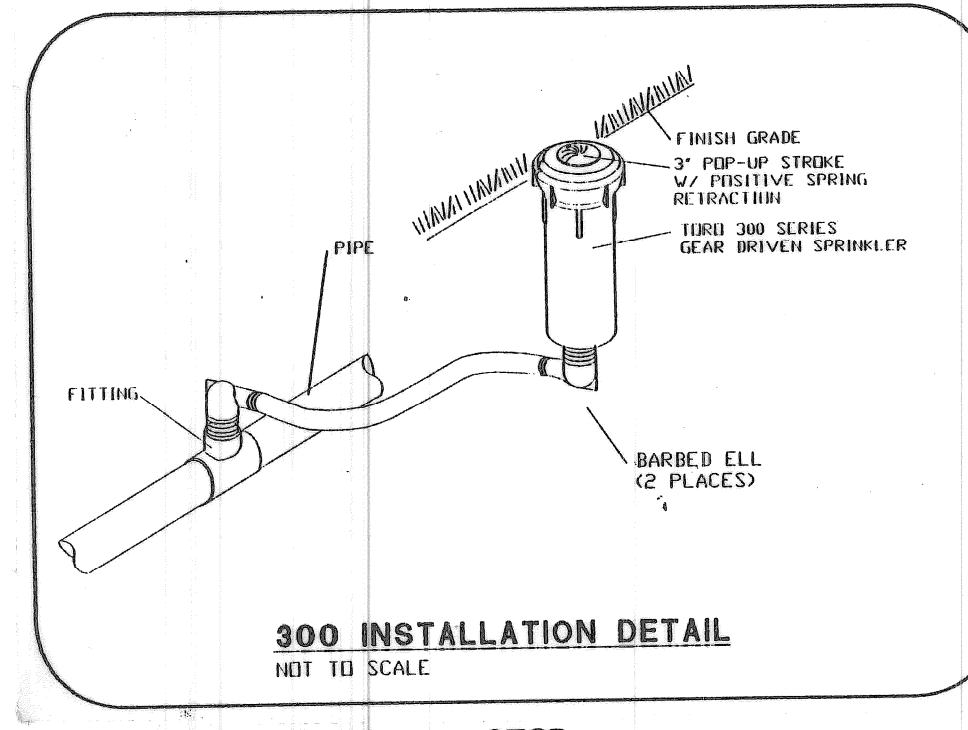
**252 SERIES VALVE**

REMOTE CONTROL, NORMALLY CLOSED VALVE, DURABLE ENGINEERING PLASTIC AND STAINLESS STEEL CONSTRUCTION, GLOBE/ANGLE CONFIGURATION, SELF-CLEANING STAINLESS STEEL METERING PIN, MANUAL FLOW CONTROL AND BLEED SCREW.



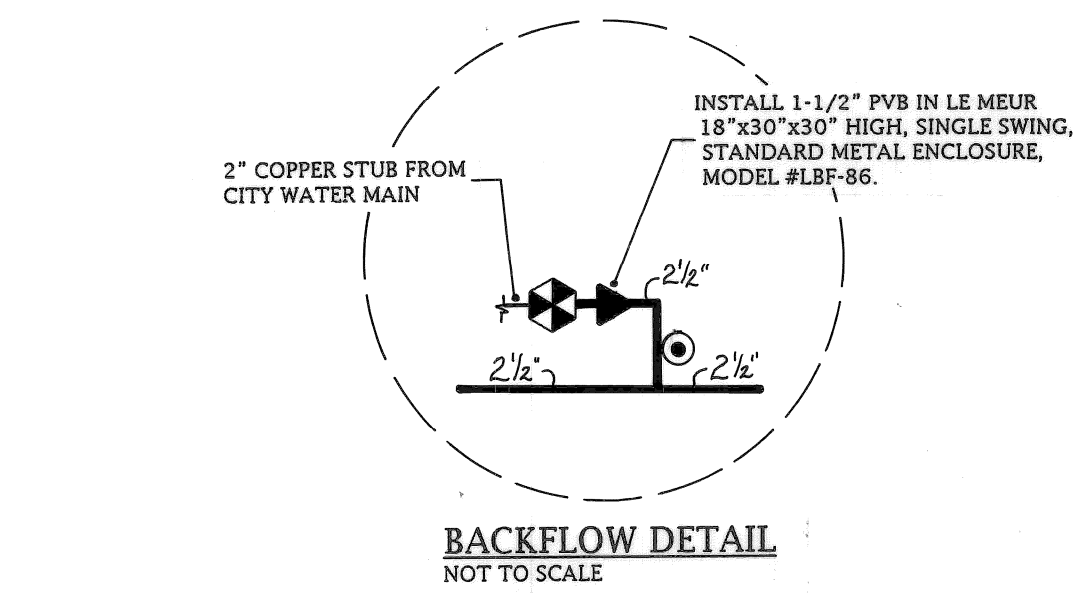
**SUPER 700**

POP-UP ROTOR WITH 20' - 52' RADIUS, DURABLE ENGINEERING PLASTIC AND STAINLESS STEEL CONSTRUCTION, BALANCED PRECIPITATION RATE NOZZLES, LOCKABLE ARC ADJUSTMENT.

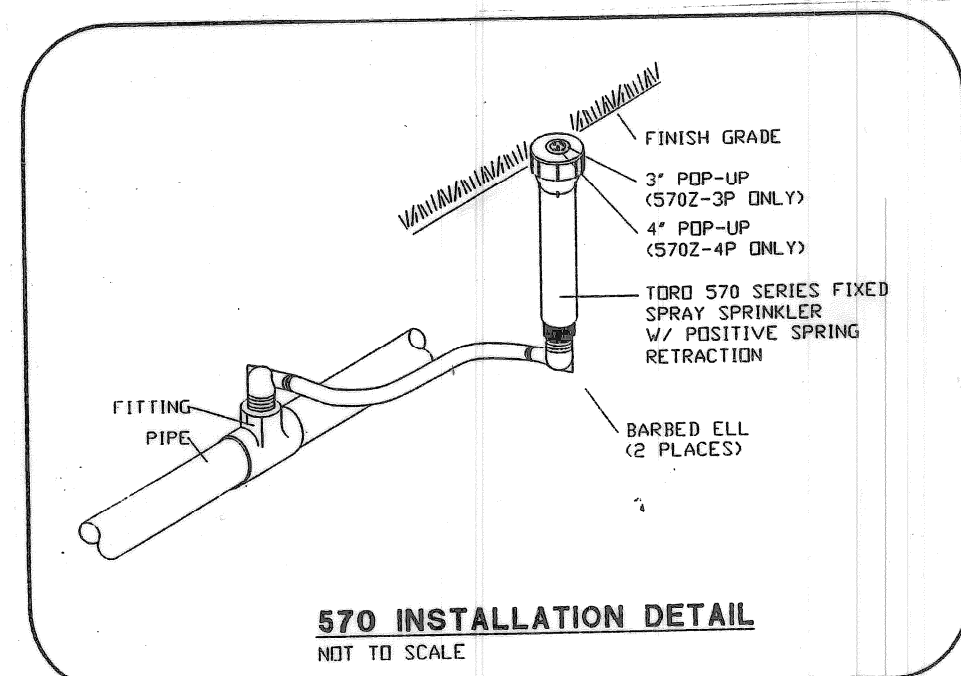


**300 SERIES STREAM ROTOR**

POP-UP ROTOR WITH MULTIPLE ROTATING STREAM PATTERN, DURABLE ENGINEERING PLASTIC CONSTRUCTION, OMNI ADJUSTABLE RADIUS 15' - 30', 3" POP-UP HEIGHT.



**BACKFLOW DETAIL**  
NOT TO SCALE

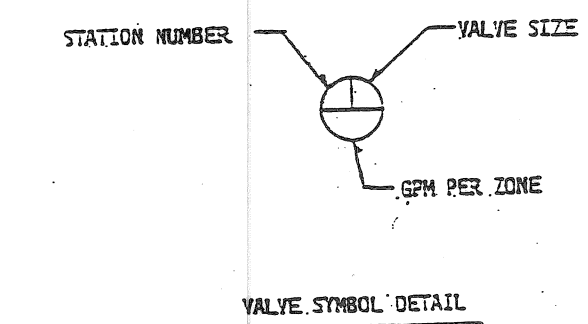


**570Z SPRAY HEAD**

POP-UP SPRAY HEAD WITH RETRACTION FLUSHING TO CLEAR DEBRIS FOR RELIABLE POP-DOWN, LOW PRESSURE SEALING AT 15 PSI, RATCHETING RISER, MATCHED PRECIPITATION RATE (MPR) NOZZLES AND OPTIONAL CHECK-O-MATIC CHECK VALVE ELIMINATES LOW HEAD DRAINAGE.

**MATERIALS LIST AND IRRIGATION LEGEND**

QTY.	SYMBOL	ITEM	TORO	RAINBIRD	WEATHER-MATIC
92		4" POP-UP SPRAY HEAD	570Z-4P	1804	35P
2	⊖	END STRIP, SIDE STRIP	4EST, 4SST	15EST, 15SST	310-551A, 310-5DLA
54	⊖	8' RADIUS	8' NOZZLE	8 NOZZLE	410 NOZZLE
9	⊖	10' RADIUS	10' NOZZLE	10 NOZZLE	412 NOZZLE
8	⊖	12' RADIUS	12' NOZZLE	12 NOZZLE	415 NOZZLE
19	⊖	15' RADIUS	15' NOZZLE	15 NOZZLE	420 NOZZLE
161	⊖	MEDIUM TURF SPRINKLER	300 STREAM ROTOR W/ OMNI ADJ. NOZZLE	T-BIRD P/C W/ T-22 NOZZLE	35P W/ 424 NOZZLE
17	⊖	MEDIUM TURF ROTOR P/C 3.0 GPM	\$700 P/C W/ 3.0 NOZZLE	T-BIRD P/C W/ T-40 NOZZLE	TURBO 3 ADJ
2	⊖	MEDIUM TURF ROTOR F/C 6.0 GPM	\$700 F/C W/ 6.0 NOZZLE	T-BIRD F/C W/ T-40 NOZZLE	TURBO 3 FULL CIRCLE
16	⊖	ELECTRIC VALVE	252 SERIES	PEB SERIES	21000DW SERIES
3	⊖	1" QCV	474-01	5RC	V100R
2	⊖	ELECTRIC CONTROLLER W/ PEDESTAL MOUNT	V2-M09 W/ 189-50	ESP-8C W/ PED16DD	LMC14 W/ LMSP
1860'	—	PVC 160# PIPE (ALL PRESSURIZED LINES), SIZED AS SHOWN			
4800'	—	100# POLYETHYLENE PIPE (PE-3408, NSF APPROVED), SIZED AS SHOWN			
2	⊖	1-1/2" PRESSURE VACUUM BREAKER (FEBCO)			
2	⊖	1-1/2" WATER METER			



**GENERAL NOTES**

- 1.) WATER REQUIREMENTS: 50 GPM @ 58 PSI (TO BE VERIFIED BY CONTRACTOR).
- 2.) ALL SLEEVES ARE TO BE 160# PVC, SIZED AS SHOWN. SLEEVES BY GENERAL CONTRACTOR.
- 3.) ALL WORK SHALL BE IN COMPLIANCE WITH ALL LOCAL, STATE, AND FEDERAL CODES AND ORDINANCES.
- 4.) ALL ELECTRICAL CONNECTIONS ARE TO BE MADE USING 3M DBY SPLICE KITS.
- 5.) ALL CONTROL WIRING DOWNSTREAM OF THE CONTROLLER SHALL BE 14AWG UL APPROVED FOR DIRECT BURY.
- 6.) ALL CLAMPS SHALL BE STAINLESS STEEL WORM GEAR TYPE CLAMPS PIPE SIZES 1-1/2" AND LARGER SHALL BE DOUBLE CLAMPED.
- 7.) PIPE ROUTING IS SCHEMATIC. ALL HEADS ARE TO BE FIELD ADJUSTED TO TAKE INTO CONSIDERATION ANY OBSTRUCTIONS AND ALL LANDSCAPING.
- 8.) ALL SPRINKLER HEADS ARE TO BE MOUNTED ON SWING JOINTS AS SPECIFIED. SEE DETAILS.
- 9.) CONTRACTOR TO VERIFY FINAL CONTROLLER LOCATION WITH OWNER.
- 10.) IRRIGATION CONTRACTOR'S POINT OF CONNECTION IS DOWNSTREAM OF WATER METER (TO BE VERIFIED WITH OWNER).
- 11.) GENERAL CONTRACTOR TO PROVIDE 110 V AC POWER TO CONTROLLER LOCATION.
- 12.) INSTALL ONE RAINSWITCH AT EACH CONTROLLER LOCATION. FINAL LOCATION OF RAINSWITCH SHALL BE APPROVED BY OWNER'S REPRESENTATIVE.
- 13.) IRRIGATION CONTRACTOR RESPONSIBLE FOR ALL PERMITS, FEES, LABOR AND MATERIALS REQUIRED TO PROVIDE 1-1/2" WATER METERS PER CITY REQUIREMENTS.

THIS SYSTEM HAS BEEN DESIGNED BASED ON INFORMATION PROVIDED BY THE OWNER, OWNER'S REPRESENTATIVE, AND/OR ARCHITECT WHO ASSUMES FULL RESPONSIBILITY FOR ITS CORRECTNESS.

72 HOURS (3 WORKING DAYS) | BEFORE YOU DIG CALL MISS DIG 800-482-7171 (TOLL-FREE)

approved: *Dadmir Haidar*

CITY OF DETROIT  
RECREATION DEPARTMENT

DEQUINDRE-WARREN

LAWN IRRIGATION DETAILS

SHEET 32 OF 80 SHEETS

AO. NO 90-14-06

DATE APRIL, 1998