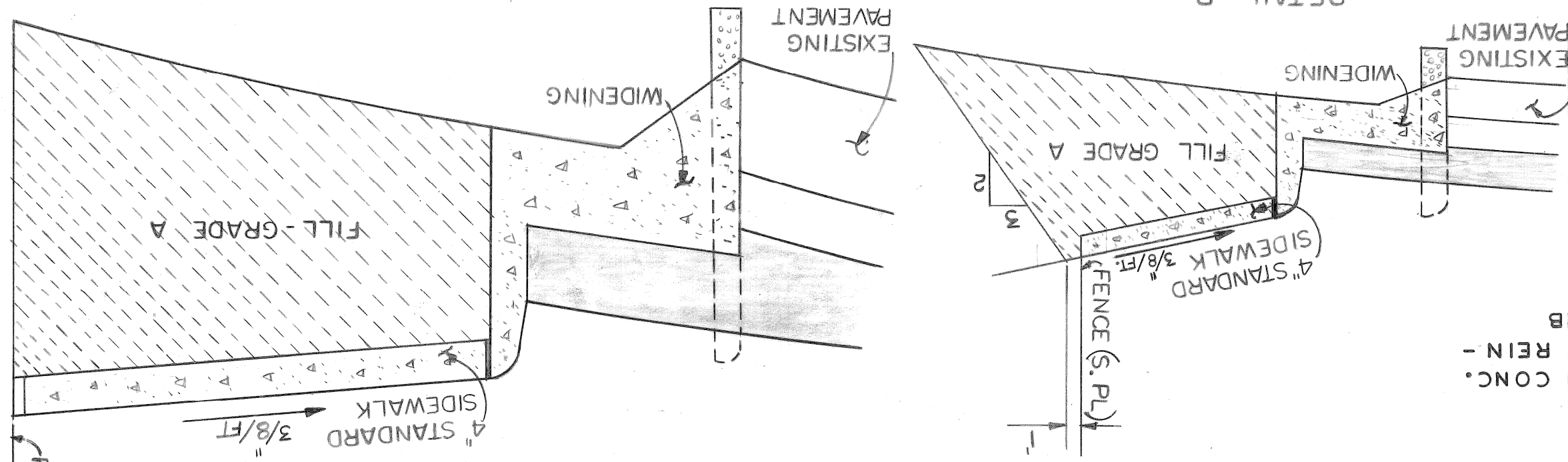
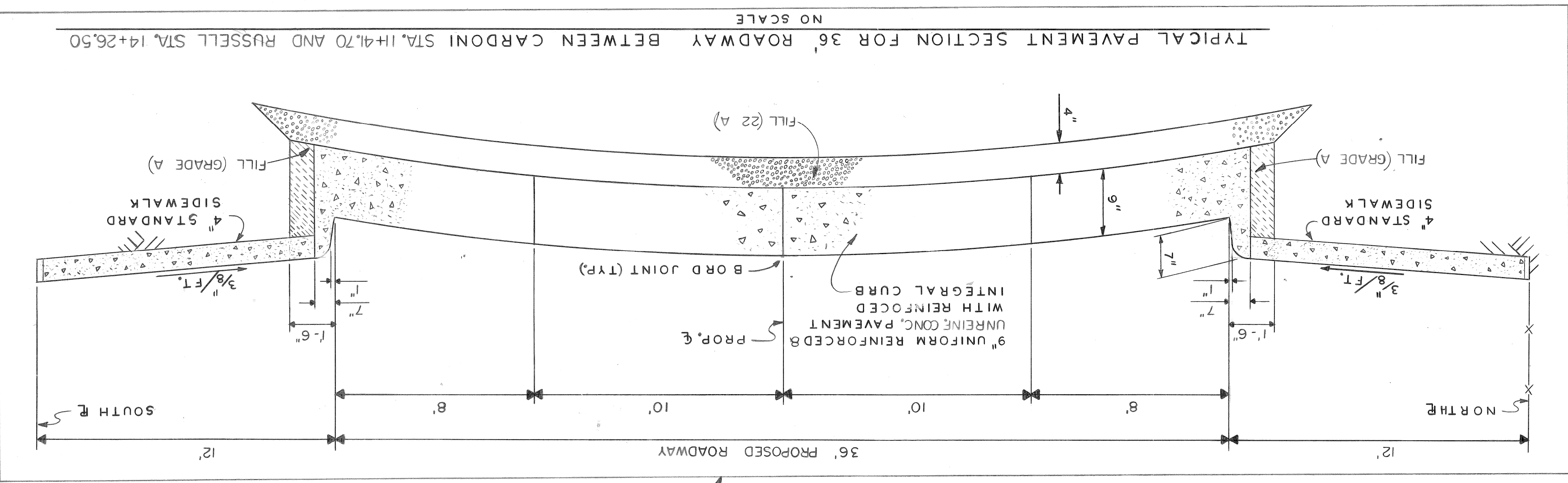
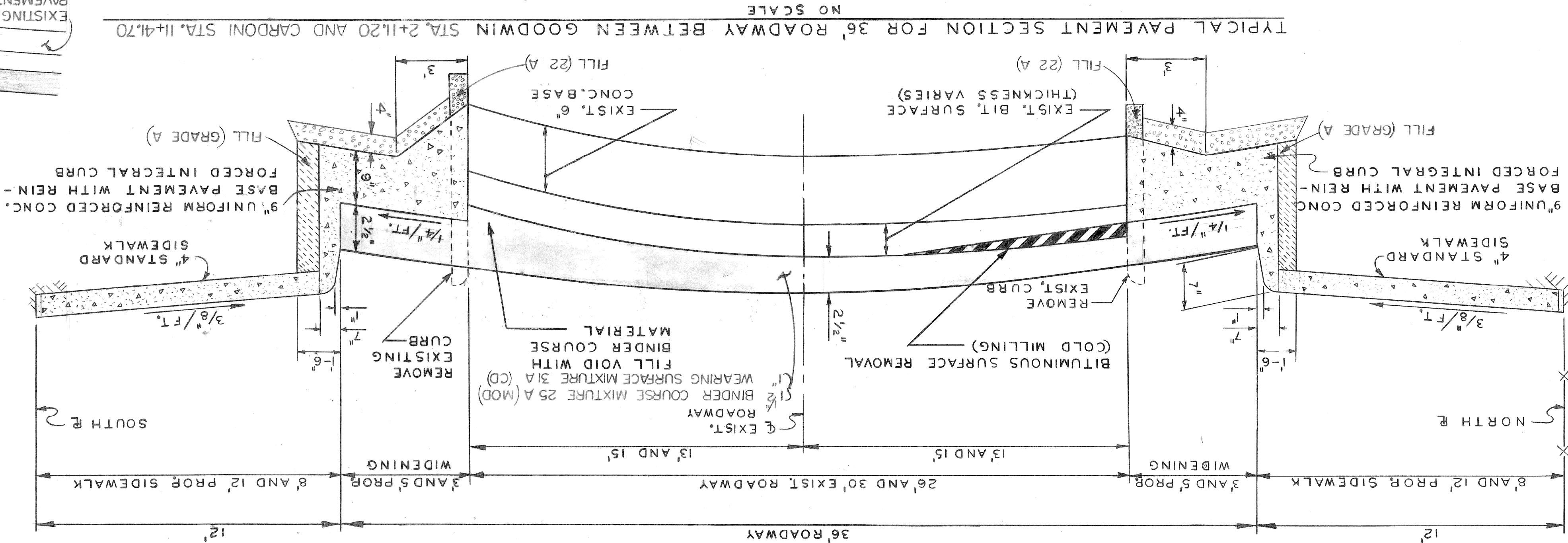


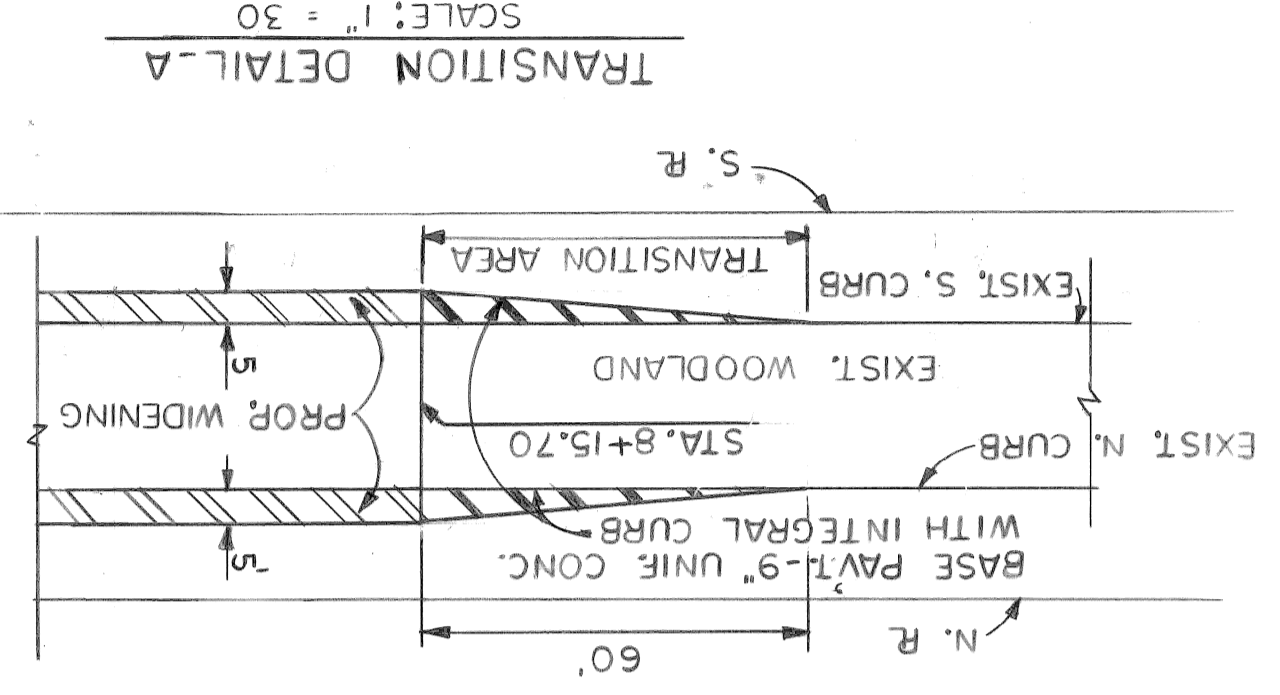
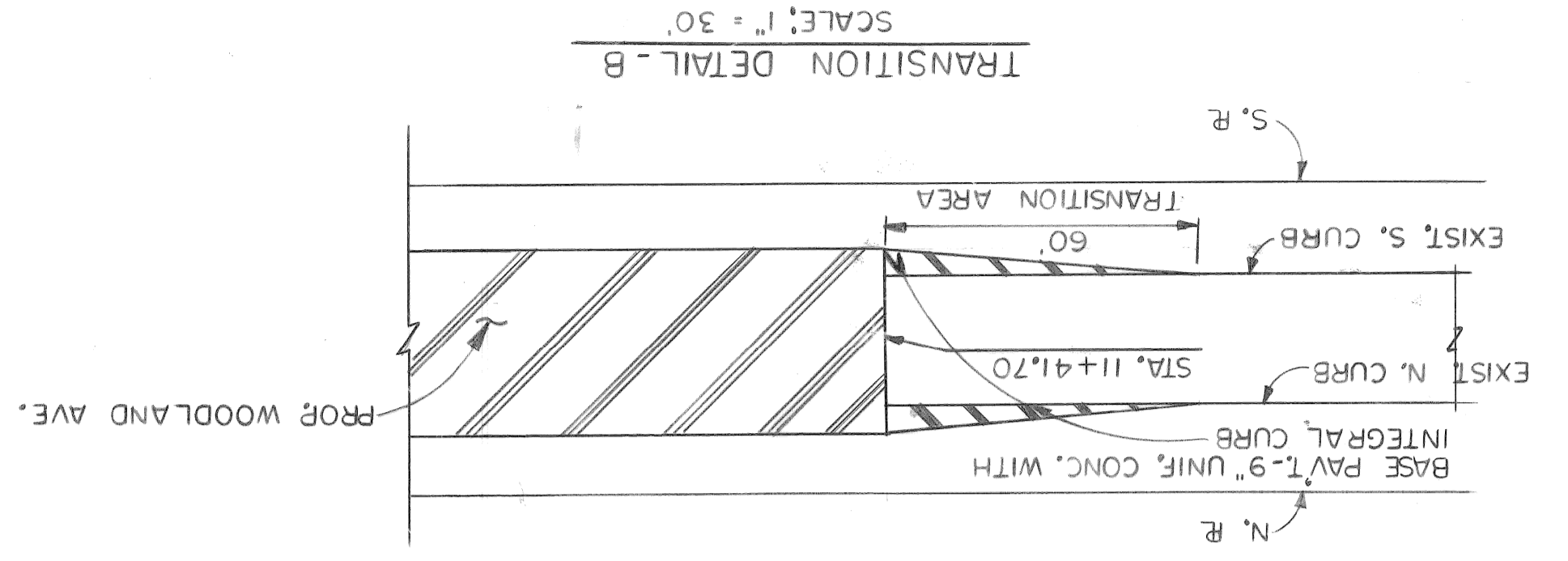
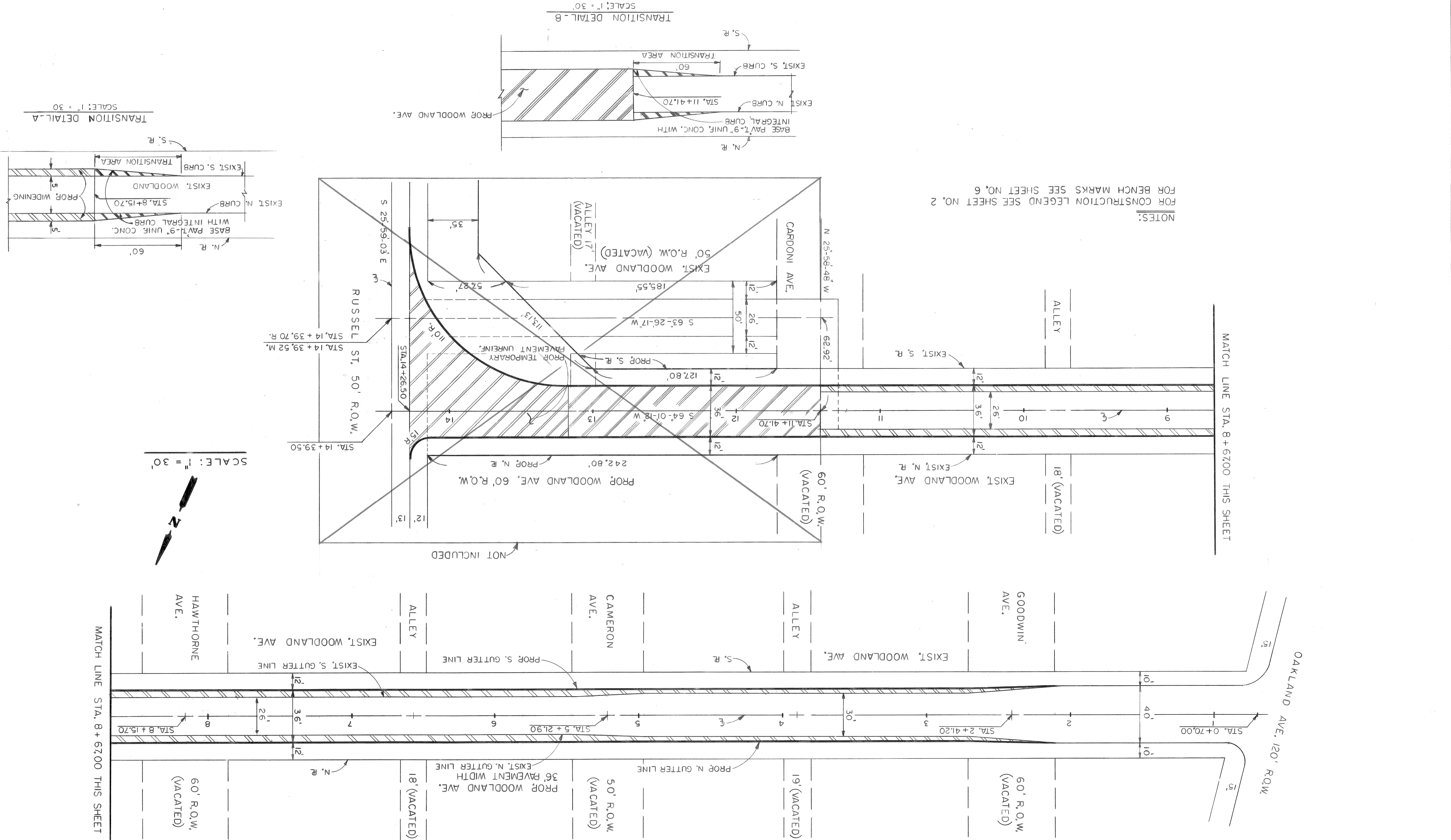
ELEMENTS FOR 36' ROADWAY

| PAVEMENT WIDTH | CURB FACE | T     | A     | B     | C     | D     | E     | L*   | S     |
|----------------|-----------|-------|-------|-------|-------|-------|-------|------|-------|
| 0.208          | 0.583     | 0.302 | 0.208 | 0.302 | 0.583 | 0.208 | 0.302 | 18.0 | 0.208 |
| 0.256          | 0.583     | 0.327 | 0.256 | 0.327 | 0.583 | 0.256 | 0.327 | 16.8 | 0.256 |
| 0.301          | 0.583     | 0.352 | 0.308 | 0.352 | 0.583 | 0.308 | 0.352 | 15.6 | 0.301 |
| 0.343          | 0.583     | 0.377 | 0.358 | 0.377 | 0.583 | 0.358 | 0.377 | 14.4 | 0.343 |
| 0.381          | 0.583     | 0.402 | 0.408 | 0.402 | 0.583 | 0.408 | 0.402 | 13.2 | 0.381 |
| 0.416          | 0.583     | 0.427 | 0.458 | 0.427 | 0.583 | 0.458 | 0.427 | 12.0 | 0.416 |
| 0.448          | 0.583     | 0.452 | 0.508 | 0.452 | 0.583 | 0.508 | 0.452 | 10.8 | 0.448 |
| 0.476          | 0.583     | 0.477 | 0.558 | 0.477 | 0.583 | 0.558 | 0.477 | 9.6  | 0.476 |
| 0.501          | 0.583     | 0.502 | 0.608 | 0.502 | 0.583 | 0.608 | 0.502 | 8.4  | 0.501 |
| 0.526          | 0.583     | 0.527 | 0.658 | 0.527 | 0.583 | 0.658 | 0.527 | 7.2  | 0.526 |
| 0.551          | 0.583     | 0.552 | 0.708 | 0.552 | 0.583 | 0.708 | 0.552 | 6.0  | 0.551 |
| 0.576          | 0.583     | 0.577 | 0.758 | 0.577 | 0.583 | 0.758 | 0.577 | 4.8  | 0.576 |
| 0.601          | 0.583     | 0.602 | 0.808 | 0.602 | 0.583 | 0.808 | 0.602 | 3.6  | 0.601 |
| 0.626          | 0.583     | 0.627 | 0.858 | 0.627 | 0.583 | 0.858 | 0.627 | 2.4  | 0.626 |
| 0.651          | 0.583     | 0.652 | 0.908 | 0.652 | 0.583 | 0.908 | 0.652 | 1.2  | 0.651 |
| 0.676          | 0.583     | 0.677 | 0.958 | 0.677 | 0.583 | 0.958 | 0.677 | 0.0  | 0.676 |



- DELETED ITEMS ARE NOT INCLUDED
- PROPOSED 9" UNIFORM REINFORCED CONCRETE PAVEMENT WITH INTEGRAL CURB
  - FILL (22 A)
  - BITUMINOUS SURFACE REMOVAL (COLD MILLING)
  - PROPOSED BITUMINOUS RESURFACING - 1" WEARING SURFACE MIXTURE 3(CD) 1/2 BINDER COURSE MIXTURE 25 A (MOD)
  - FILL (GRADE A)
  - CONSTRUCT 4" STANDARD SIDEWALK
  - CONSTRUCT 6" STANDARD SIDEWALK
  - CONSTRUCT DROP MANHOLE
  - CONSTRUCT CATCH BASIN
  - CONSTRUCT 12" SEWER LINE
  - INTEGRAL CURB AND 2 FT. SIDEWALK
  - STRIP AND ADJUST ASPHALT SURFACE
  - CONSTRUCT SIDEWALK RAMP TYPE I
  - RESURFACING AREA WITH 2 1/2 BITUMINOUS SURFACE
  - WIDENING AREA - 9" UNIFORM REINFORCED CONCRETE BASE WITH INTEGRAL CURB
  - NEW PAVEMENT - 9" UNIFORM REINFORCED CONCRETE WITH INTEGRAL CURB
  - TEMPORARY PAVEMENT - 9" UNIFORM UNREINFORCED CONCRETE WITH INTEGRAL CURB
  - 000.00C. TOP OF CURB ELEV.
  - 000.00G. GUTTER ELEV.
  - 000.000. PAVEMENT ELEV.

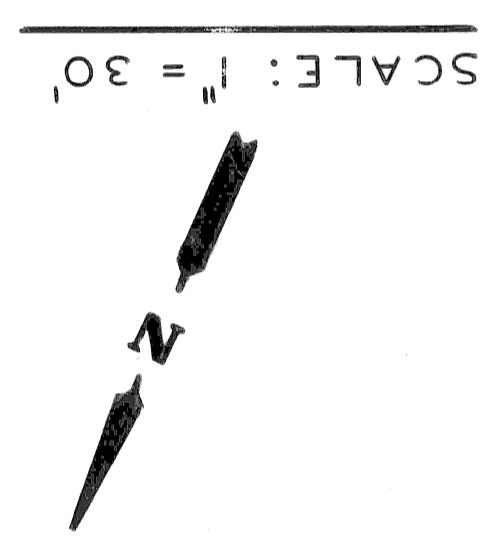
LEGEND FOR PAVEMENT SECTIONS



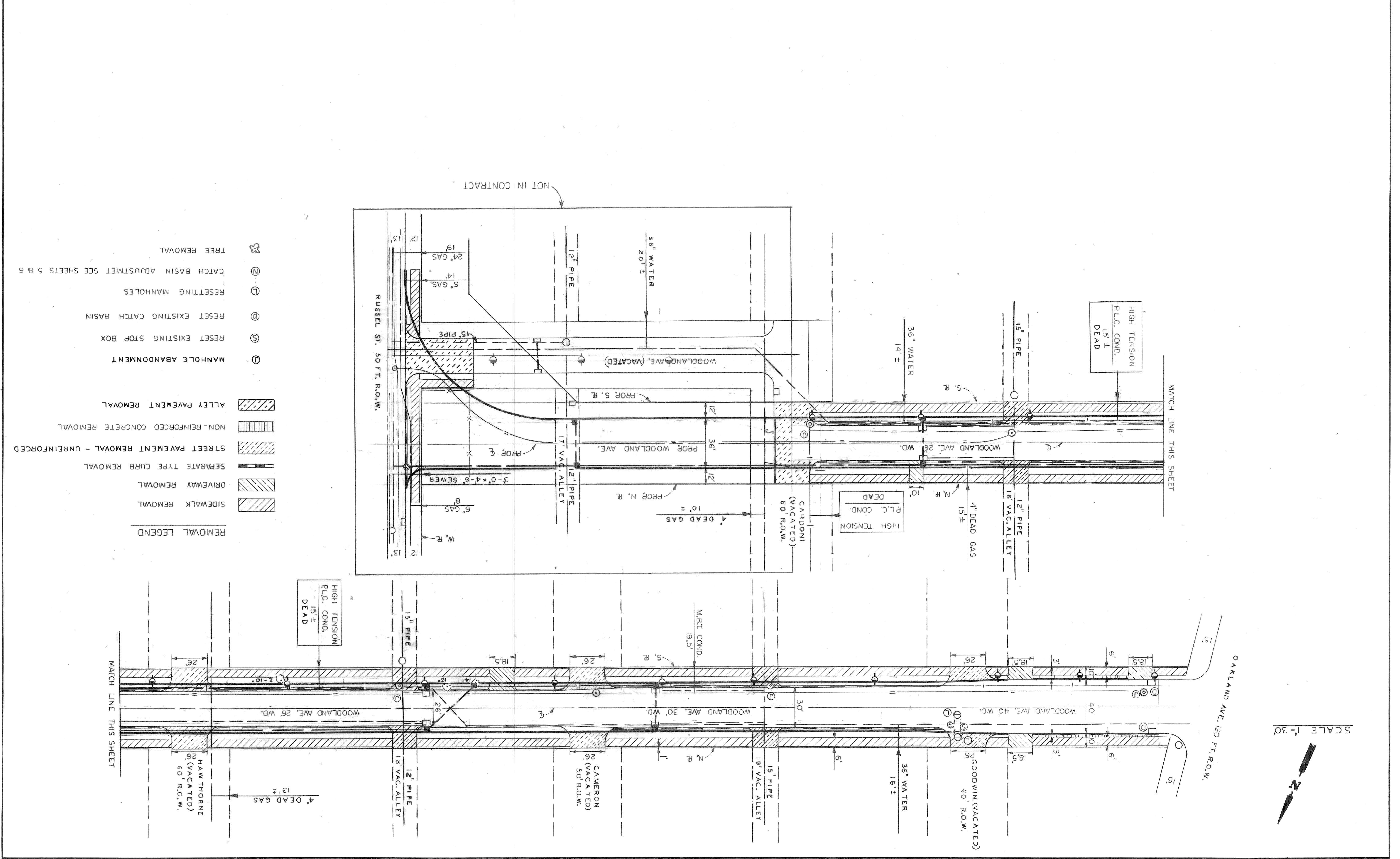
NOTES:  
FOR CONSTRUCTION LEGEND SEE SHEET NO. 2  
FOR BENCH MARKS SEE SHEET NO. 6

MATCH LINE STA. 8+67.00 THIS SHEET

MATCH LINE STA. 14+39.50 THIS SHEET

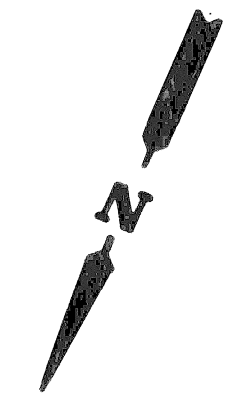


|   |                     |   |
|---|---------------------|---|
| REVISIONS LOCATED BY COORDINATES ON SHEET   | NO. 91-14-11        | DATE AUG, 1991  |
| COORD. DESCRIPTION  | NO. P.W. - 6795     | ASSIGNMENT  |
| REFERENCES  | SHEET 4 OF 8 SHEETS | CONTRACT  |
| DRAWINGS  | DESIGNED BY N.H.    | DRAWN BY M.K.   |
| TRACED BY   | CHECKED BY          | APPROVED: <i>William J. Talley</i><br>ENGINEER OF STREETS |
| CITY OF DETROIT<br>BUREAU OF STREETS AND HIGHWAYS<br>FOR<br>REMOVAL AND UTILITY SHEET |                     |   |



- REMOVAL LEGEND**
- SIDEWALK REMOVAL
  - DRIVEWAY REMOVAL
  - SEPARATE TYPE CURB REMOVAL
  - STREET PAVEMENT REMOVAL - UNREINFORCED
  - NON-REINFORCED CONCRETE REMOVAL
  - ALLEY PAVEMENT REMOVAL
  - MANHOLE ABANDONMENT
  - RESET EXISTING STOP BOX
  - RESET EXISTING CATCH BASIN
  - RESETTING MANHOLES
  - CATCH BASIN ADJUSTMENT SEE SHEETS 5 & 6
  - TREE REMOVAL

SCALE 1" = 30'



OAKLAND AVE. 120 FT. R.O.W.

MATCH LINE THIS SHEET

MATCH LINE THIS SHEET

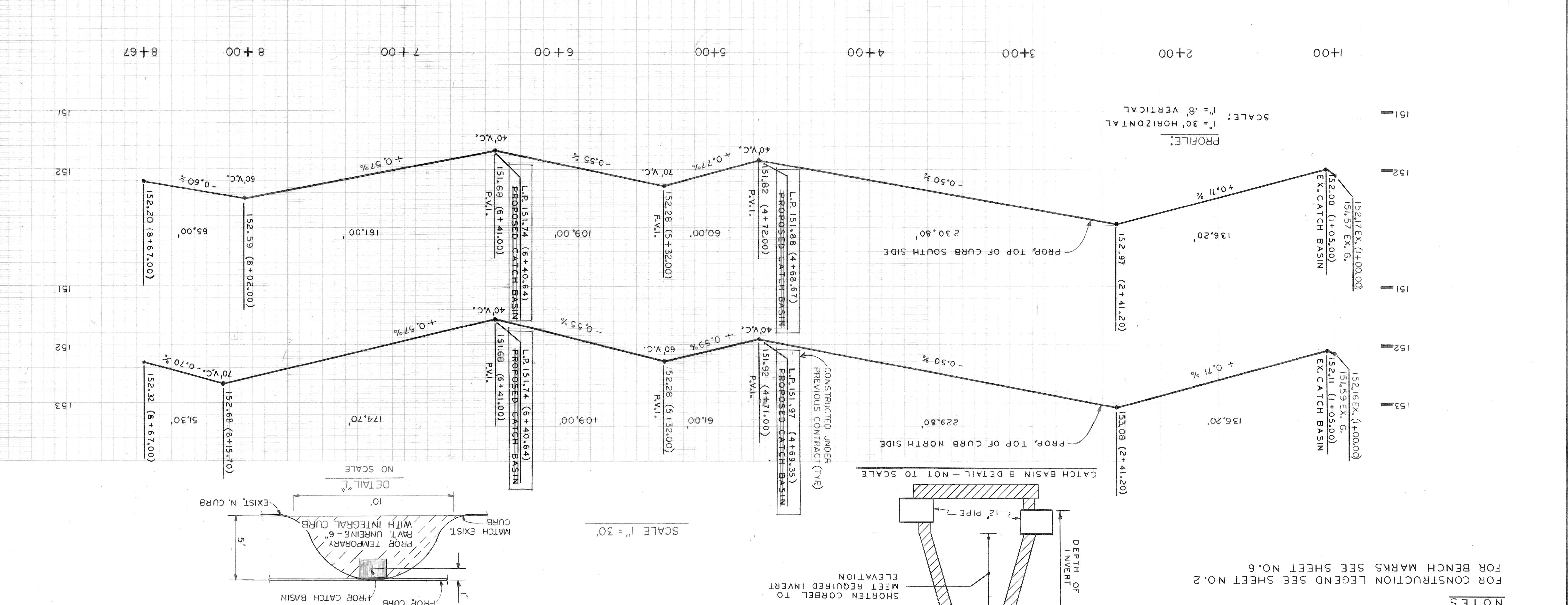
NOT IN CONTRACT

QUANTITIES

| NO. | DESCRIPTION   | UNIT | SHEET NO. 4 | SHEET NO. 5 | SHEET NO. 6 | TOTAL  | TOTAL | TOTAL | TOTAL  | GRAND TOTAL |
|-----|---|------|-------------|-------------|-------------|--------|-------|-------|--------|-------------|
|     | EXCAVATION  | CYDS | 439         | 211         | 772         | 353    | 244   | 772   | 650    |             |
|     | FILL - (22 A)   | CYDS | 84          | 58          | 171         | 10     | 6     | 171   | 142    |             |
|     | SIDEWALK REMOVAL  | SFT  | 8960        | 1153        | 3324        | 5636   | 1153  | 3324  | 8961   |             |
|     | DRIVEWAY REMOVAL  | SFT  | 1428        |             | 170         | 1258   | 170   | 1428  | 1428   |             |
|     | SEPERATE TYPE CURB REMOVAL - NONREINFORCED                        | LFT  | 1520        |             | 170         | 920    | 600   | 170   | 1520   |             |
|     | FILL - (GRADE A)  | CYDS | 160         | 67          | 40          | 157    | 110   | 40    | 227    |             |
|     | ALLEY PAVEMENT REMOVAL  | SYDS | 140         | 68          | 140         | 140    | 68    | 140   | 208    |             |
|     | STREET PAVEMENT REMOVAL NONREINFORCED                             | SYDS | 348         | 236         | 219         | 129    | 236   | 129   | 348    |             |
|     | CHAIN LINK FENCE REMOVAL  | LFT  | 105         |             |             |        | 105   |       |        |             |
|     | NONREINFORCED CONCRETE SLAB REMOVAL                               | CYDS | 16          |             | 16          |        | 16    |       | 16     |             |
|     | CATCH BASIN ABANDONMENT   | EACH |             | 6           |             |        | 6     |       |        |             |
|     | MANHOLE ABANDONMENT   | EACH | 3           |             | 3           |        | 1     |       | 3      |             |
|     | TREE REMOVAL (4" TO 12")  | EACH | 2           |             | 2           |        | 2     |       | 2      |             |
|     | TREE REMOVAL (13" TO 18")   | EACH | 2           |             | 2           |        | 2     |       | 2      |             |
|     | RESETTING MANHOLES  | EACH | 2           |             | 2           |        | 2     |       | 2      |             |
|     | RESETTING CATCH BASINS  | EACH | 2           |             | 2           |        | 2     |       | 2      |             |
|     | RESETTING STOP BOX  | EACH | 2           |             | 2           |        | 2     |       | 2      |             |
|     | CATCH BASINS - A  | EACH |             | 2           |             |        | 2     |       | 2      |             |
|     | CATCH BASINS - B  | EACH |             | 3           |             |        | 4     |       | 4      |             |
|     | SEWERS - 12" PIPE C-76-III  | LFT  |             | 467         | 612         |        | 9     |       | 1079   |             |
|     | SEWERS - 12" PIPE C - 76-IV                                       | LFT  |             |             |             |        | 9     |       | 9      |             |
|     | DROP MANHOLE  | EACH |             |             | 1           |        | 1     |       | 1      |             |
|     | PAVEMENT - 9" UNIFORM REINFORCED CONCRETE WITH INTEGRAL CURB      | SYDS |             |             | 722         |        | 722   |       | 722    |             |
|     | CATCH BASIN "BT" (B" WITH TRAP)                                   | EACH |             |             | 1           |        | 1     |       | 1      |             |
|     | PAVEMENT - 9" UNIFORM UNREINFORCED CONCRETE                       | SYDS |             |             | 752         |        | 752   |       | 752    |             |
|     | BASE PAVEMENT - 9" UNIFORM REINFORCED CONCRETE WITH INTEGRAL CURB | SYDS | 703         | 341         | 14          | 598    | 414   | 20    | 1044   |             |
|     | CONCRETE BASE PAVEMENT - 6" UNREINFORCED WITH INTEGRAL CURB       | SYDS |             |             | 6           |        | 233   |       | 233    |             |
|     | INTEGRAL CURB AND SIDEWALK - 2 FT. WIDE                           | LFT  | 233         | 6,275       | 6,174       | 11,344 | 6,990 | 6,174 | 18,125 |             |
|     | SIDEWALK - 4" STANDARD  | SFT  | 245         |             | 461         |        | 245   |       | 245    |             |
|     | SIDEWALK - 6" STANDARD  | SFT  |             |             | 252         |        | 252   |       | 252    |             |
|     | STRIP AND ADJUST ASPHALT SURFACE                                  | SYDS |             |             | 70          |        | 80    |       | 70     |             |
|     | PERFORMED WHITE OR YELLOW THERMOPLASTIC PAVEMENT MARKINGS - 4"    | LFT  | 200         | 70          | 190         |        | 80    |       | 270    |             |
|     | CONDITIONING  | SYDS | 486         | 127         | 235         |        | 97    |       | 613    |             |
|     | CLEANING  | SYDS | 664         | 176         | 850         |        | 274   |       | 840    |             |
|     | REMOVE BITUMINOUS SURFACE   | SYDS | 1,364       | 489         | 1,260       |        | 593   |       | 1,853  |             |
|     | BITUMINOUS BOND COAT  | GALS | 378         | 119         | 352         |        | 145   |       | 497    |             |
|     | CLEANING STRUCTURES   | EACH | 2           |             | 2           |        | 2     |       | 2      |             |
|     | MAINTAINING TRAFFIC   | L.S. |             |             |             |        |       |       | L.S.   |             |
|     | WEARING SURFACE MIXTURE   | TONS | 162         | 57          | 150         |        | 69    |       | 219    |             |
|     | a) 31A (CD) - SLAG 1" AVERAGE THICKNESS                           | TONS |             |             |             |        |       |       |        |             |
|     | b) 31A (CD) - NATURAL 1" AVERAGE THICKNESS                        | TONS | 172         | 61          | 159         |        | 74    |       | 233    |             |
|     | BINDER COURSE MIXTURE   | TONS |             |             |             |        |       |       |        |             |
|     | a) 25A (MOD) - SLAG 1 1/2" AVERAGE THICKNESS                      | TONS | 236         | 83          | 218         |        | 101   |       | 319    |             |
|     | b) 25A (MOD) - NATURAL 1 1/2" AVERAGE THICKNESS                   | TONS | 257         | 91          | 238         |        | 110   |       | 348    |             |
|     | REMOVE EXISTING CONCRETE BASE                                     | SYDS |             |             |             |        |       |       | 95     |             |
|     | REPLACE CONCRETE BASE WITH GRADE A CONCRETE                       | SYDS |             |             |             |        |       |       | 95     |             |
|     | TEST CORES  | EACH | 1           |             |             |        |       |       | 1      |             |
|     | CATCH BASIN ADJUSTMENT  | EACH |             | 5           |             |        |       |       |        |             |

|   |  |  |  |   |  |  |  |   |  |  |
|---|--|--|--|---|--|--|--|---|--|--|
| REVISIONS LOCATED BY COORDINATES ON SHEET<br>COORD. DESCRIPTION<br>DATE |  | CHECKED BY<br>TRACED BY<br>DRAWN BY<br>DESIGNED BY |  | APPROVED<br>ENGINEER OF STREETS<br>HIGHWAY ENGINEER |  | CITY OF DETROIT<br>CITY ENGINEERING DEPARTMENT<br>BUREAUS OF STREETS AND HIGHWAYS<br>FOR |  | QUANTITIES SHEET<br>FROM OAKLAND TO RUSSELL<br>OF WOODLAND AVE.<br>RELOCATION, WIDENING AND RESURFACING |  | SHEET 7 OF 8 SHEETS<br>CONTRACT NO. P.W. - 6795<br>ASSIGNMENT NO. 91-14-11<br>DATE AUG. 1991 |
|---|--|--|--|---|--|--|--|---|--|--|

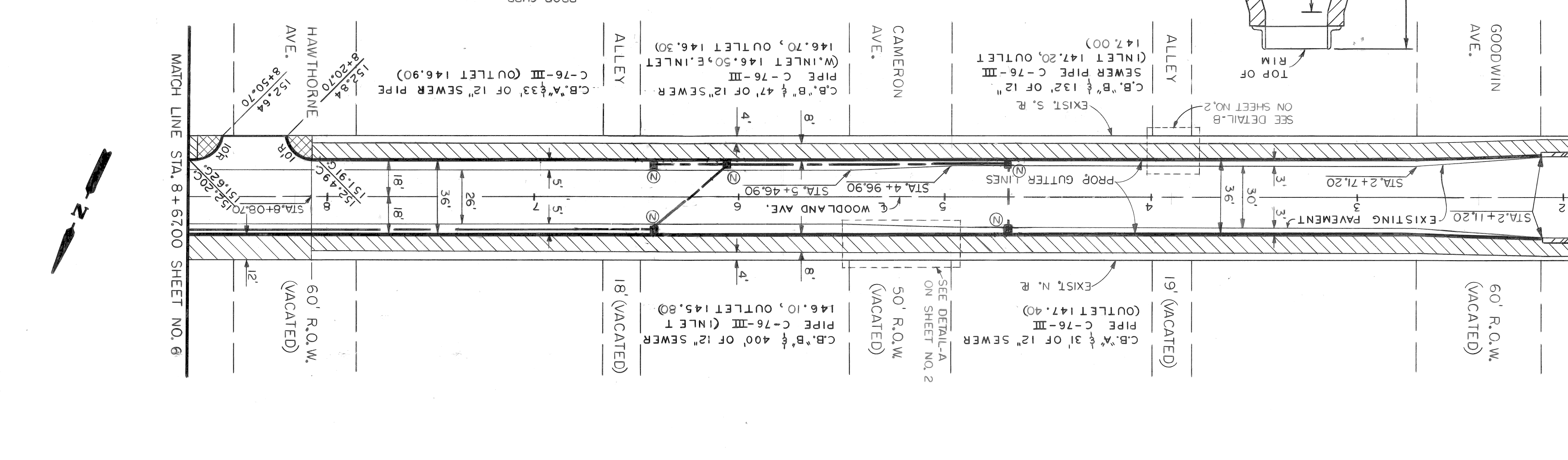
|               |                      |                          |                        |                     |           |             |    |            |          |                     |                 |                                 |                                  |     |             |                                      |                         |                  |
|---------------|----------------------|--------------------------|------------------------|---------------------|-----------|-------------|----|------------|----------|---------------------|-----------------|---------------------------------|----------------------------------|-----|-------------|--------------------------------------|-------------------------|------------------|
| DATE AUG 1991 | INDEXED NO. 91-14-11 | ASSIGNMENT NO. P.W.-6795 | CONTRACT NO. P.W.-6795 | SHEET 5 OF 5 SHEETS | REVISIONS | DESCRIPTION | BY | CHECKED BY | APPROVED | ENGINEER OF STREETS | CITY OF DETROIT | BUREAUS OF STREETS AND HIGHWAYS | CITY ENGINEERING DIVISION-D.P.W. | FOR | PAVING PLAN | RELOCATION, WIDENING AND RESURFACING | FROM OAKLAND TO RUSSELL | OF WOODLAND AVE. |
|---------------|----------------------|--------------------------|------------------------|---------------------|-----------|-------------|----|------------|----------|---------------------|-----------------|---------------------------------|----------------------------------|-----|-------------|--------------------------------------|-------------------------|------------------|



NOTES

FOR CONSTRUCTION LEGEND SEE SHEET NO. 2

FOR BENCH MARKS SEE SHEET NO. 6



|   |   |      |       |      |                      |       |            |          |
|---|---|------|-------|------|----------------------|-------|------------|----------|
| NOTE - FOR SYMBOLS ETC. SEE STANDARD DETAIL DRAWING NO. C-115 | BEFORE STARTING CONSTRUCTION CONTRACTOR MUST CHECK WITH UTILITIES FOR LOCATIONS OF EXISTING STRUCTURES WHETHER OR NOT INDICATED ON PLANS. | BOOK | LEVEL | DATE | NO. PAVING COMPLETED | SCALE | HORIZONTAL | VERTICAL |
|---|---|------|-------|------|----------------------|-------|------------|----------|

