

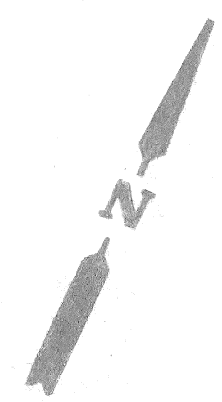
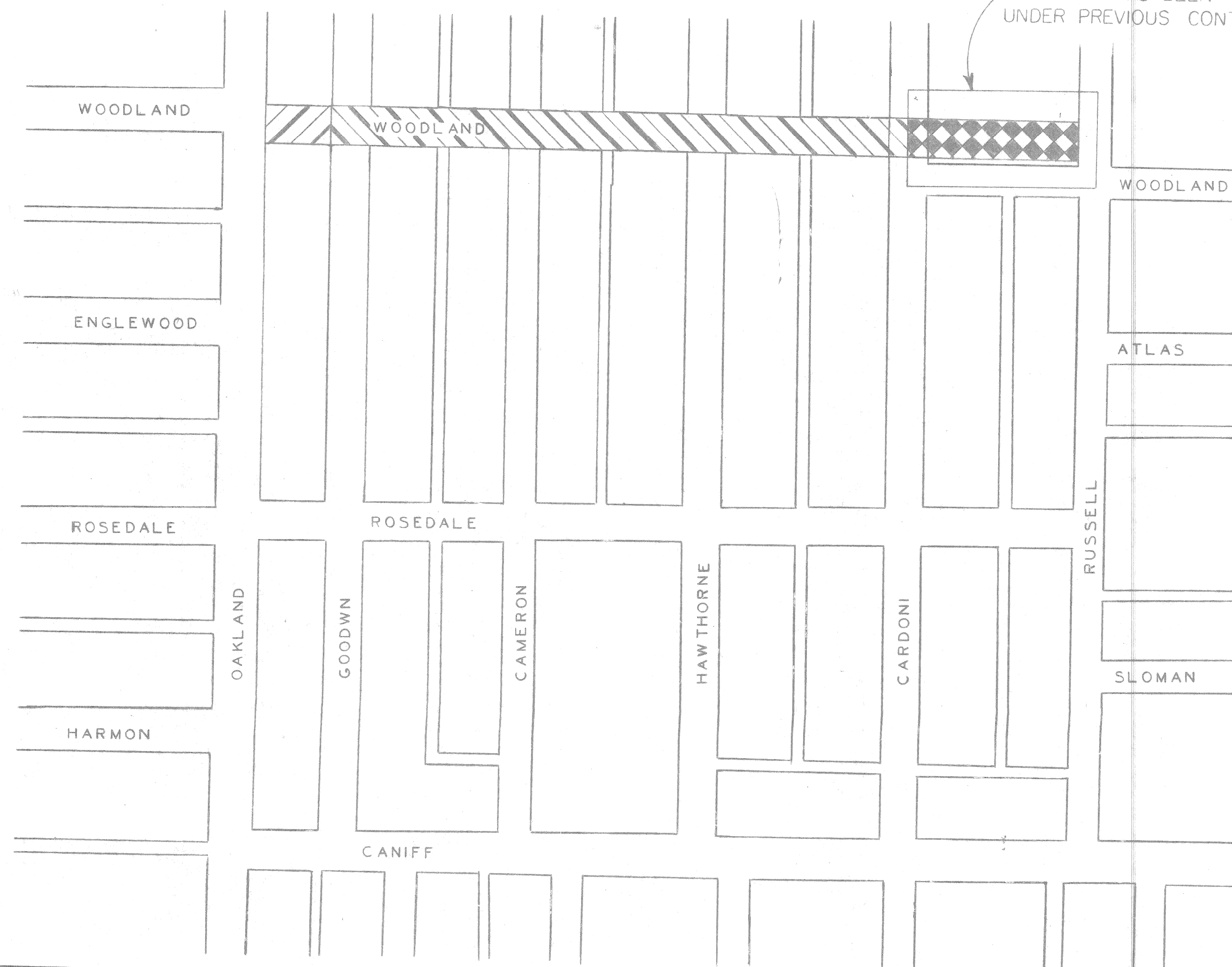
CITY OF DETROIT
 COLEMAN A. YOUNG - MAYOR
 CITY ENGINEERING DEPARTMENT




PLANS FOR PROPOSED
 RELOCATION, WIDENING AND RESURFACING
 OF WOODLAND AVE.
 FROM OAKLAND TO RUSSELL

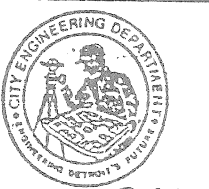
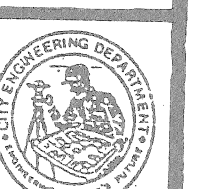
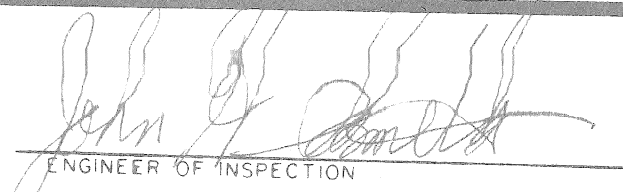


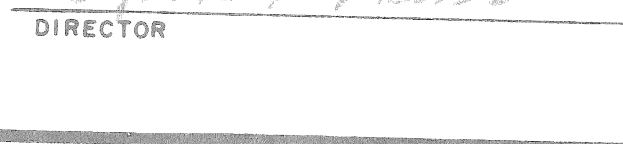
INDEX OF SHEETS

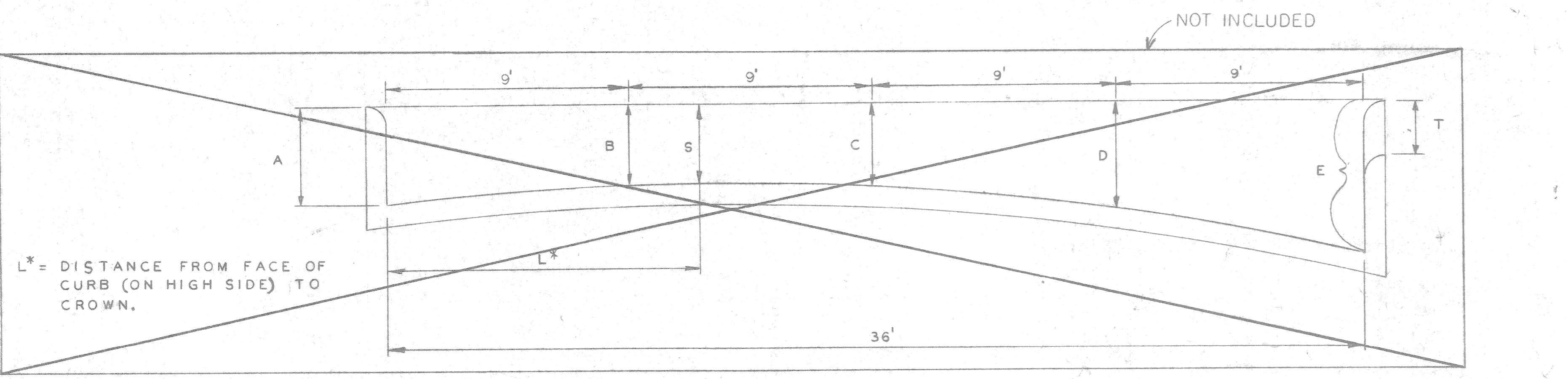
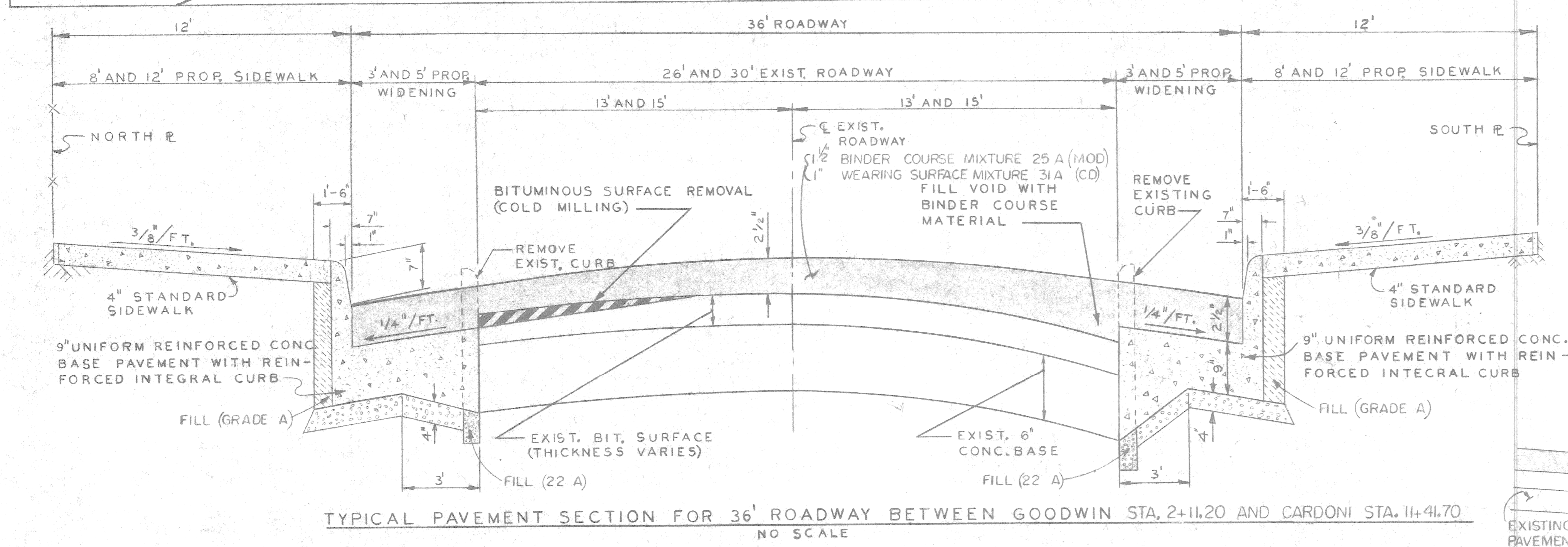
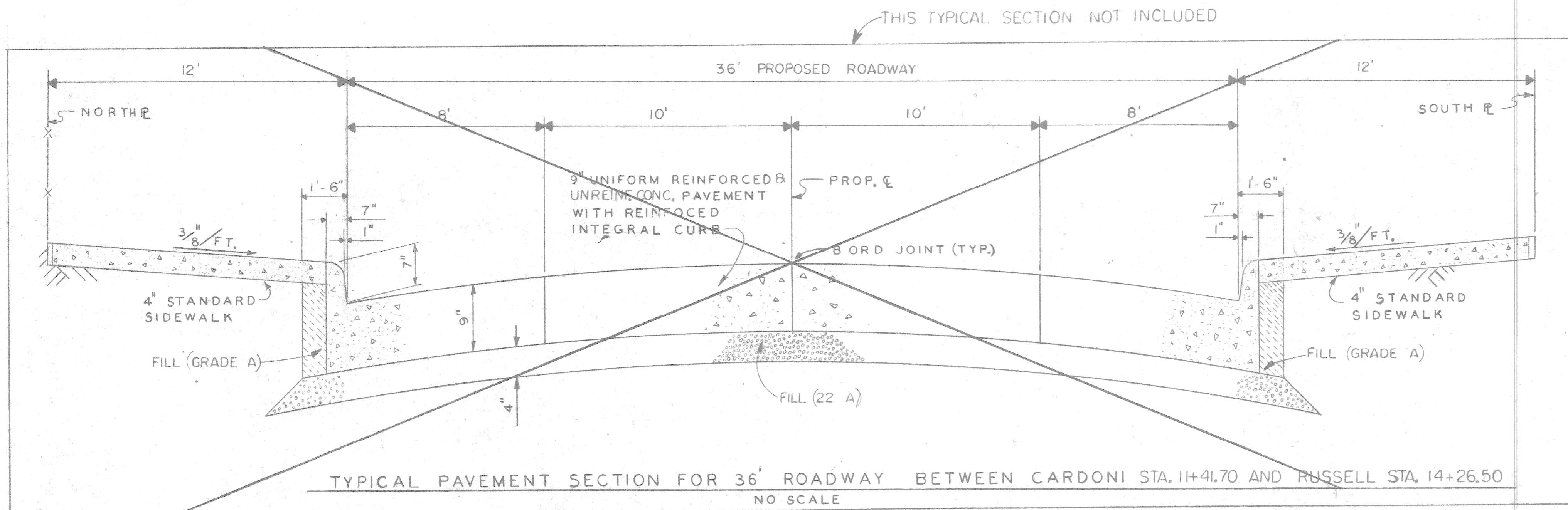
1. TITLE SHEET
2. TYPICAL SECTIONS
3. ALIGNMENT SHEET
4. REMOVAL AND UTILITY SHEET
- 5-6. PAVING PLANS
7. QUANTITY SHEET
8. PAVEMENT MARKINGS

THIS PART HAS BEEN CONSTRUCTED
 UNDER PREVIOUS CONTRACT



-  RESURFACING AND MISCELLANEOUS CONSTRUCTION
-  WIDENING AND MISCELLANEOUS CONSTRUCTION
-  PREVIOUSLY CONSTRUCTED

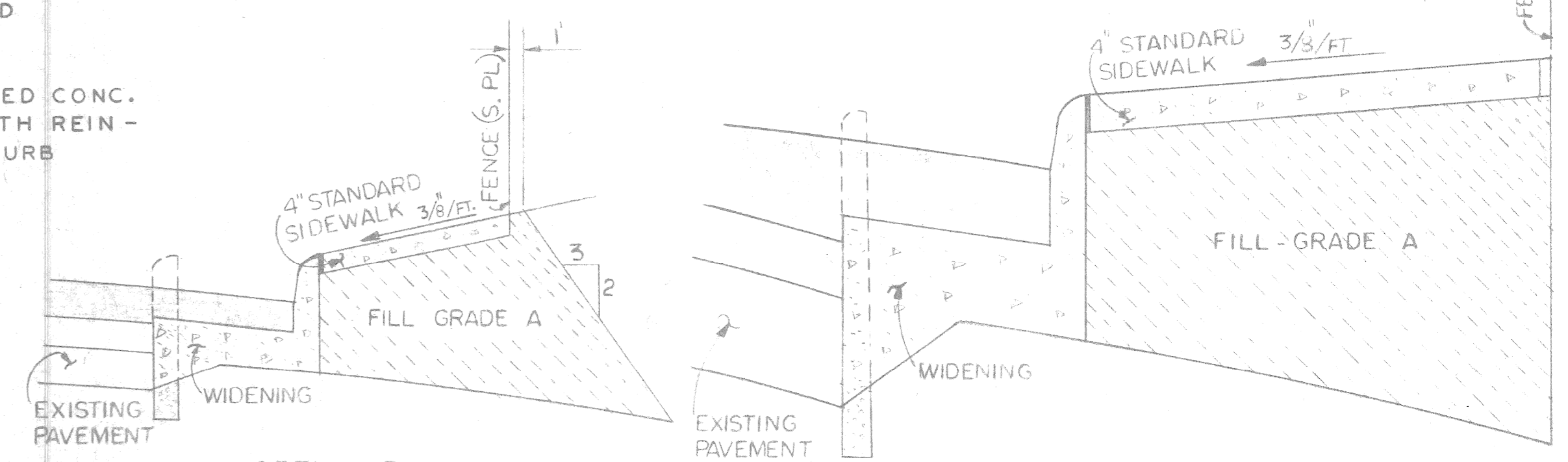
PROJECT: RELOCATION, WIDENING AND RESURFACING OF WOODLAND AVENUE FROM OAKLAND TO RUSSELL		CONTRACT NO. P.W-6795
 PLANS PREPARED BY CITY ENGINEERING DEPARTMENT 		
RECOMMENDED FOR APPROVAL ENGINEER OF INSPECTION	 _____ ENGINEER OF INSPECTION	8-4-89 DATE
RECOMMENDED FOR APPROVAL ENGINEER OF STREETS	 _____ ENGINEER OF STREETS	8/4/89 DATE
APPROVED DEPUTY DIRECTOR	 _____ DEPUTY DIRECTOR	8/4/89 DATE
APPROVED DIRECTOR	 _____ DIRECTOR	8-4-89 DATE
DATE AUGUST, 1991		DRWG. NO. 1 OF 8



LEGEND FOR PAVEMENT SECTIONS

- PROPOSED 9" UNIFORM REINFORCED CONCRETE PAVEMENT WITH INTEGRAL CURB
 - FILL (22 A)
 - BITUMINOUS SURFACE REMOVAL (COLD MILLING)
 - PROPOSED BITUMINOUS RESURFACING - 1" WEARING SURFACE MIXTURE 31(CD) & 1 1/2" BINDER COURSE MIXTURE 25 A (MOD)
 - FILL (GRADE A)
- CONSTRUCTION LEGEND
- CONSTRUCT 4" STANDARD SIDEWALK
 - CONSTRUCT 6" STANDARD SIDEWALK
 - CONSTRUCT DROP MANHOLE
 - CONSTRUCT CATCH BASIN
 - CONSTRUCT 12" SEWER LINE
 - INTEGRAL CURB AND 2 FT. SIDEWALK
 - STRIP AND ADJUST ASPHALT SURFACE
 - CONSTRUCT SIDEWALK RAMP TYPE I
 - RESURFACING AREA WITH 2 1/2" BITUMINOUS SURFACE
 - WIDENING AREA - 9" UNIFORM REINFORCED CONCRETE BASE WITH INTEGRAL CURB
 - NEW PAVEMENT - 9" UNIFORM REINFORCED CONCRETE WITH INTEGRAL CURB
 - TEMPORARY PAVEMENT - 9" UNIFORM UNREINFORCED CONCRETE WITH INTEGRAL CURB
- 000.00C. TOP OF CURB ELEV.
000.00G. GUTTER ELEV.
000.00 PAVEMENT ELEV.

DELETED ITEMS ARE NOT INCLUDED



THIS TABLE NOT INCLUDED

ELEMENTS FOR 36' ROADWAY

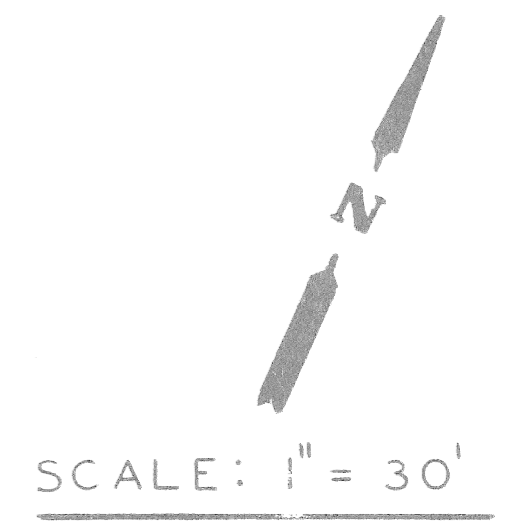
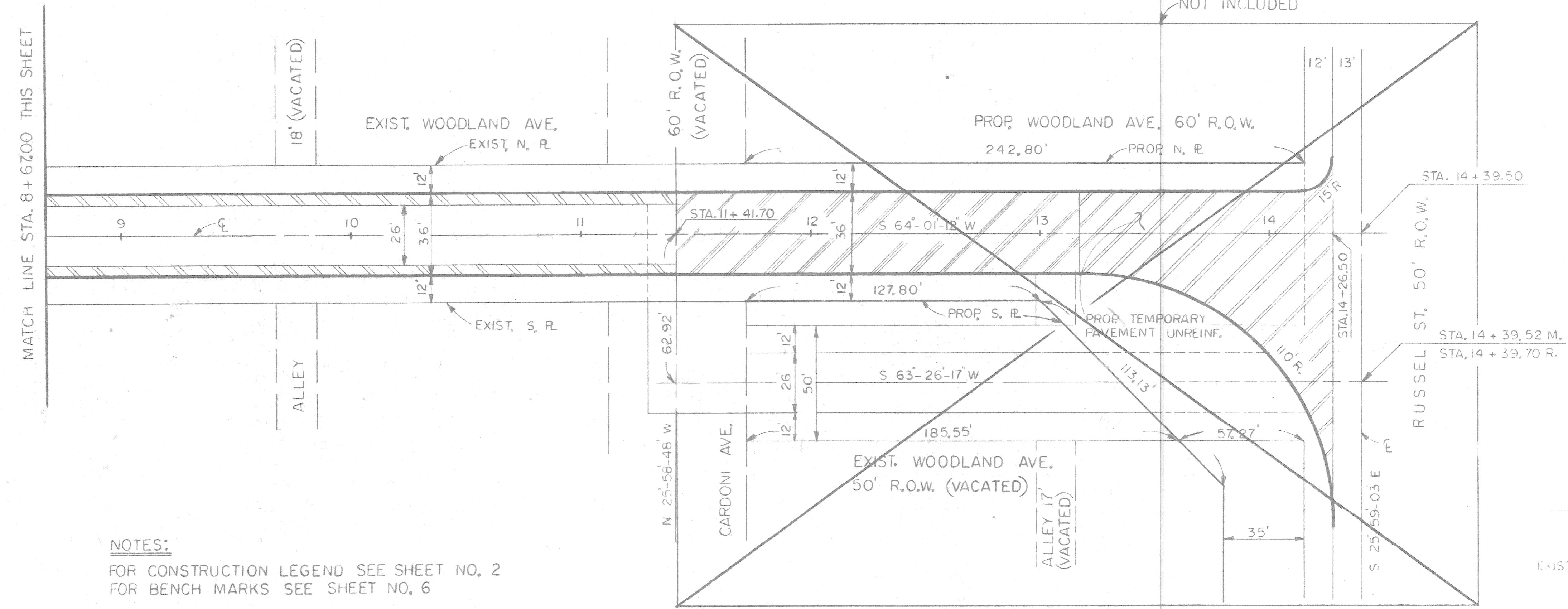
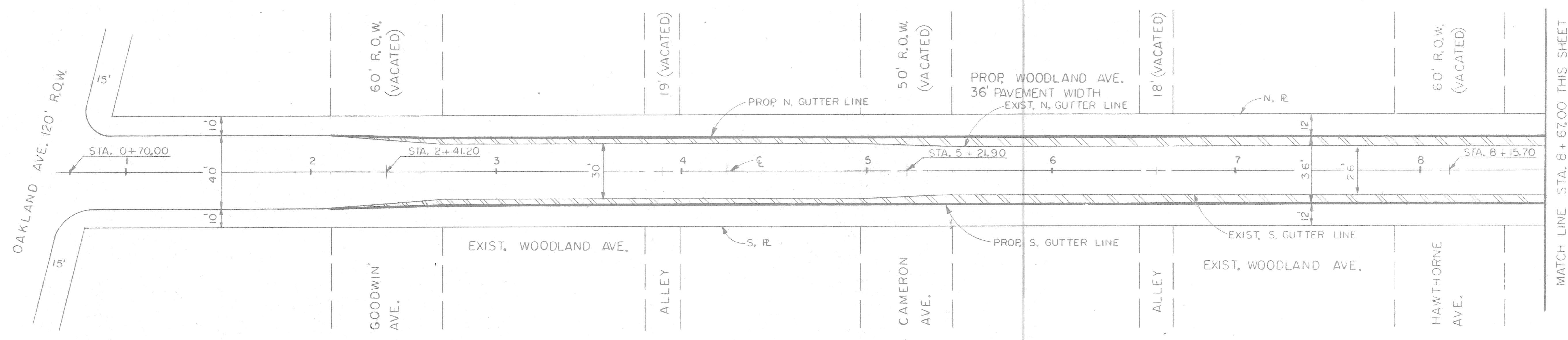
PAVEMENT WIDTH	CURB FACE	T	A	B	C	D	E	L*	S
36'	7"	0	0,583	0,302	0,208	0,302	0,583	18,0	0,208
		0,1	0,583	0,327	0,258	0,377	0,683	16,8	0,256
		0,2	0,583	0,352	0,308	0,452	0,783	15,6	0,301
		0,3	0,583	0,377	0,358	0,527	0,883	14,4	0,343
		0,4	0,583	0,402	0,408	0,602	0,983	13,2	0,381
		0,5	0,583	0,427	0,458	0,677	1,083	12,0	0,416
		0,6	0,583	0,452	0,508	0,752	1,183	10,8	0,448
		0,7	0,583	0,477	0,558	0,827	1,283	9,6	0,476
		0,8	0,583	0,502	0,608	0,902	1,383	8,4	0,501

DESIGNED BY	N, H.
DRAWN BY	M, K.
TRACED BY	
CHECKED BY	David H.
APPROVED:	<i>William L. Kelly</i> ENGINEER OF STREETS

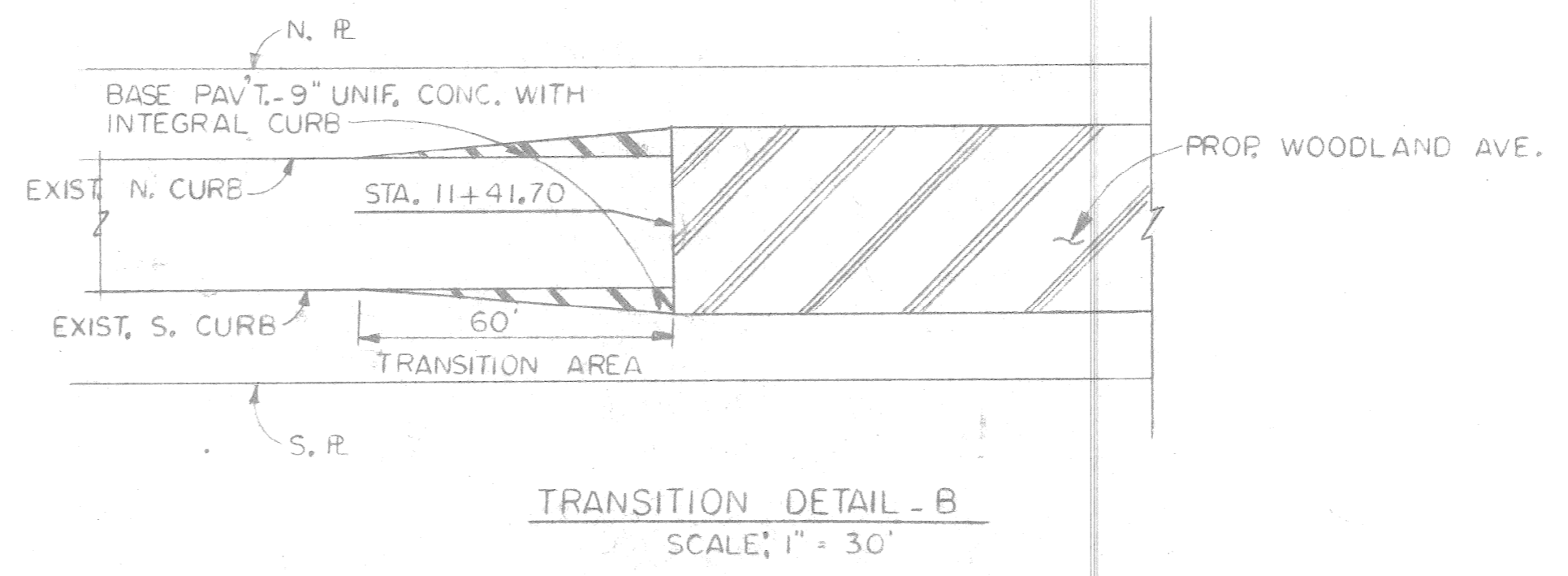
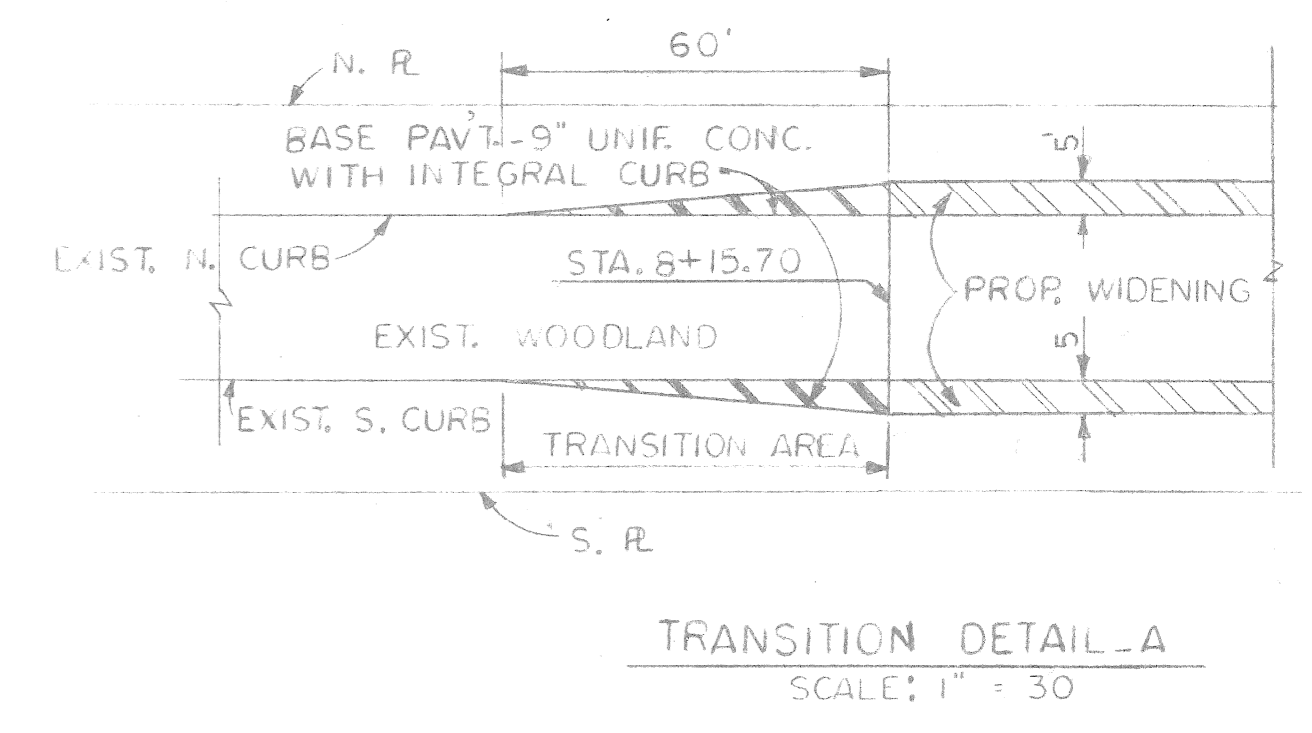
CITY OF DETROIT
CITY ENGINEERING DEPARTMENT
BUREAUS OF STREETS AND HIGHWAYS
FOR

RELOCATION, WIDENING AND RESURFACING
OF WOODLAND AVE.
FROM OAKLAND TO RUSSELL

SHEET 2 OF 8 SHEETS
CONTRACT NO. P W - 6795
ASSIGNMENT NO. 91-14-11
DATE AUG. 1991

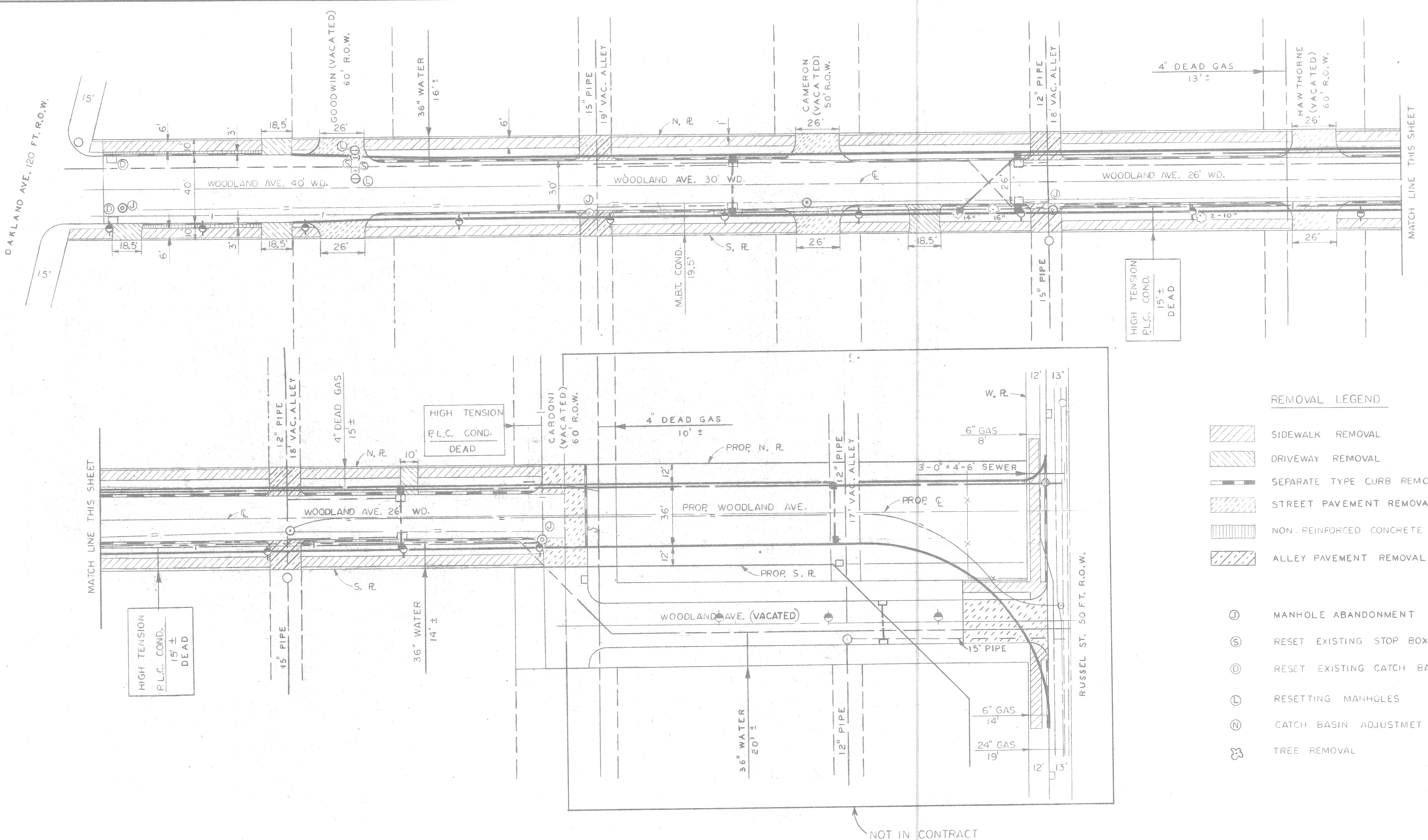


NOTES:
 FOR CONSTRUCTION LEGEND SEE SHEET NO. 2
 FOR BENCH MARKS SEE SHEET NO. 6



DESIGNED BY N, H.		APPROVED: <i>[Signature]</i> ENGINEER OF STREETS		CITY OF DETROIT CITY ENGINEERING DEPARTMENT BUREAU OF STREETS AND HIGHWAYS FOR		RELOCATION, WIDENING AND RESURFACING OF WOODLAND AVE. FROM OAKLAND TO RUSSELL		SHEET 3 OF 8 SHEETS	
DRAWN BY M, K.								CONTRACT NO. P W - 6795	
TRACED BY				ALIGNMENT SHEET		ASSIGNMENT NO. 91-14-11		DATE AUG., 1991	
CHECKED BY						DATE AUG., 1991			
COORD.	DESCRIPTION	DRN	CHKD	APVD	DATE				
REVISIONS LOCATED BY COORDINATES ON SHEET									

SCALE 1" = 30'



REMOVAL LEGEND

- SIDEWALK REMOVAL
- DRIVEWAY REMOVAL
- SEPARATE TYPE CURB REMOVAL
- STREET PAVEMENT REMOVAL - UNREINFORCED
- NON-REINFORCED CONCRETE REMOVAL
- ALLEY PAVEMENT REMOVAL

- MANHOLE ABANDONMENT
- RESET EXISTING STOP BOX
- RESET EXISTING CATCH BASIN
- RESETTING MANHOLES
- CATCH BASIN ADJUSTMET SEE SHEETS 5 & 6
- TREE REMOVAL

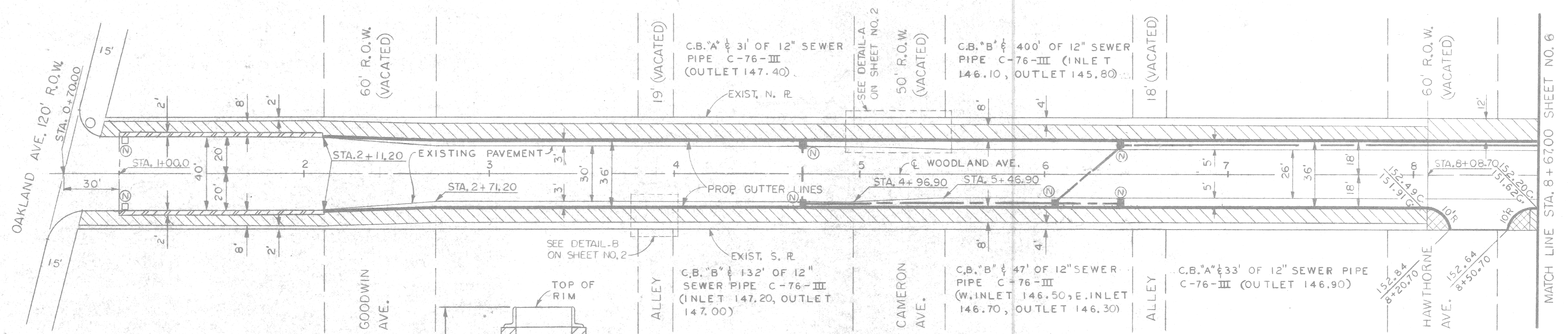
HIGH TENSION
P.L.C. COND.
15' ±
DEAD

HIGH TENSION
P.L.C. COND.
DEAD

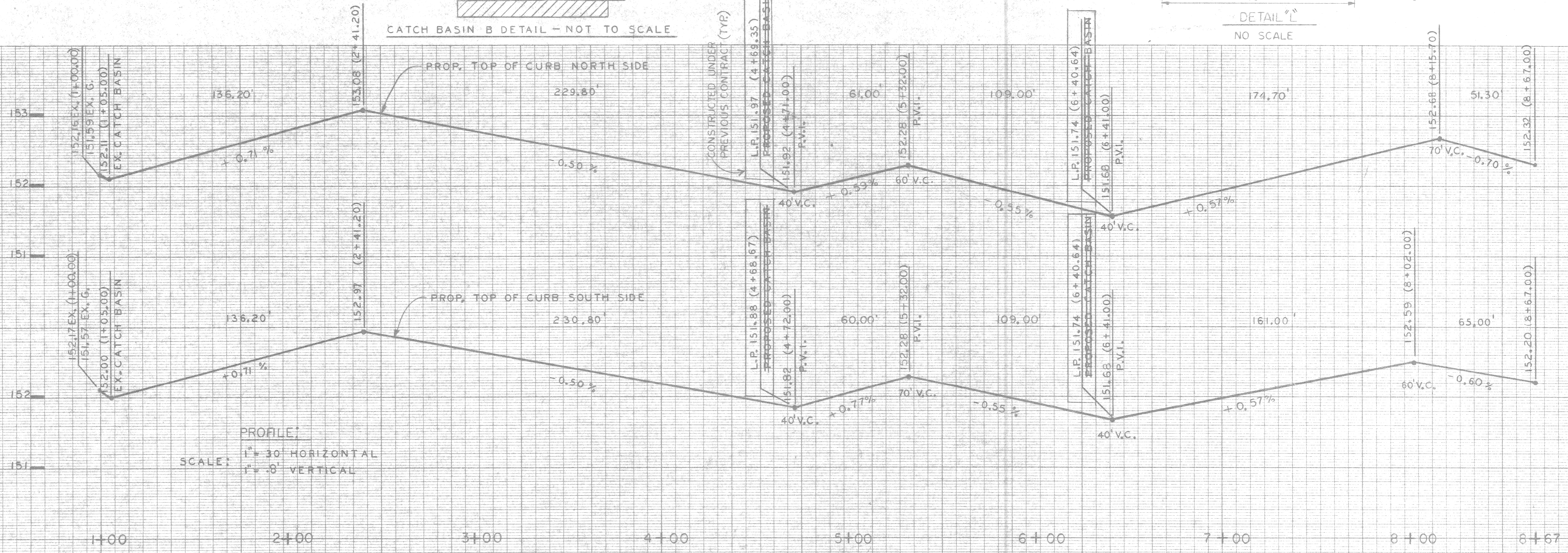
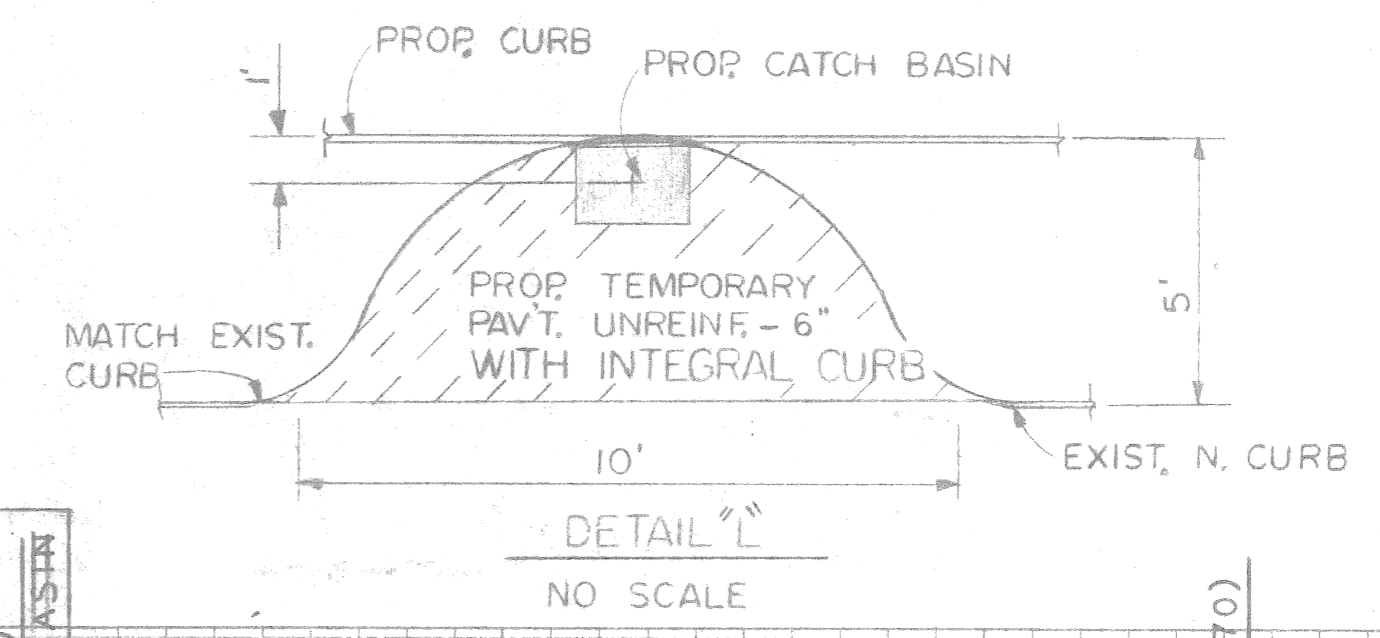
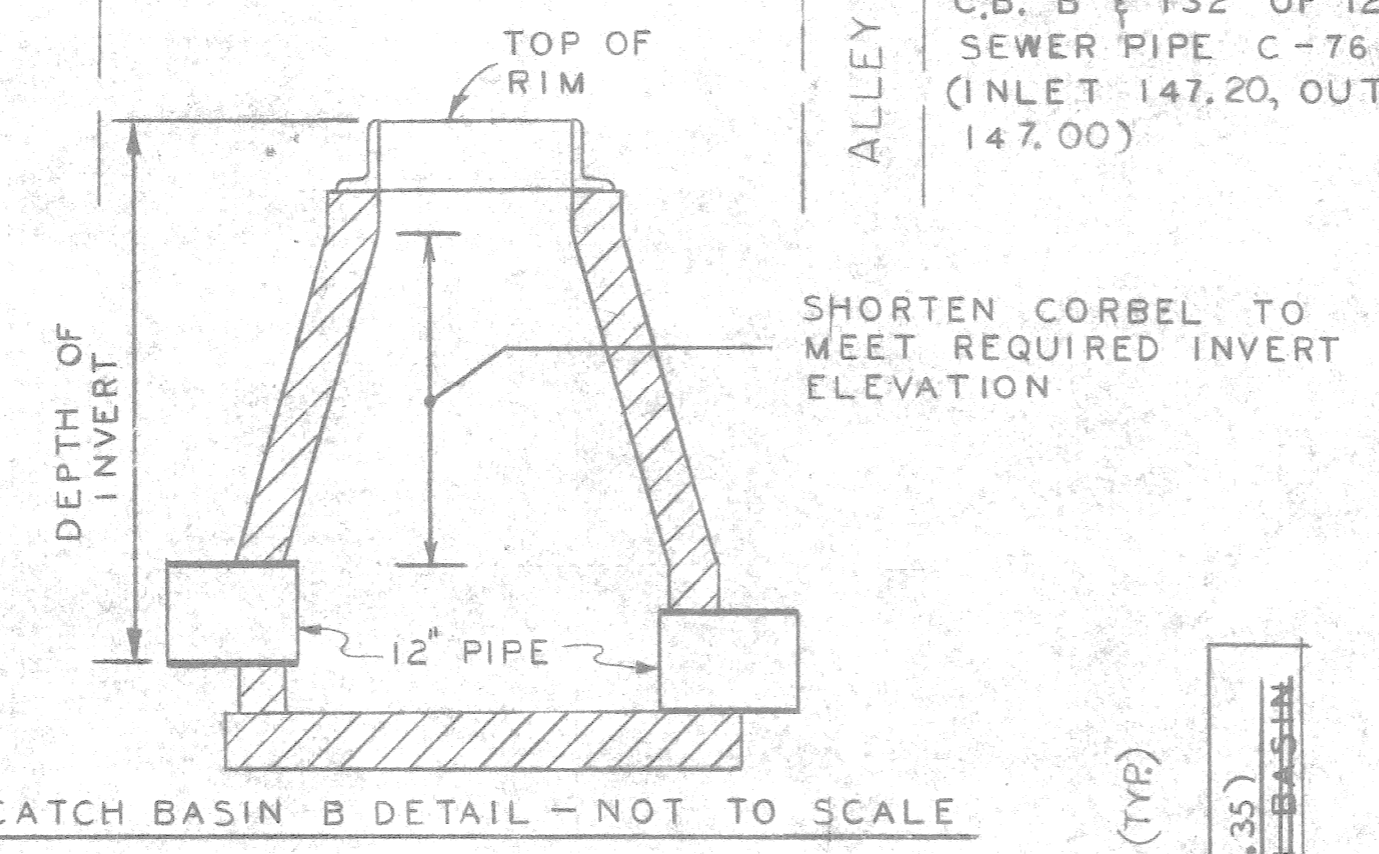
HIGH TENSION
P.L.C. COND.
15' ±
DEAD

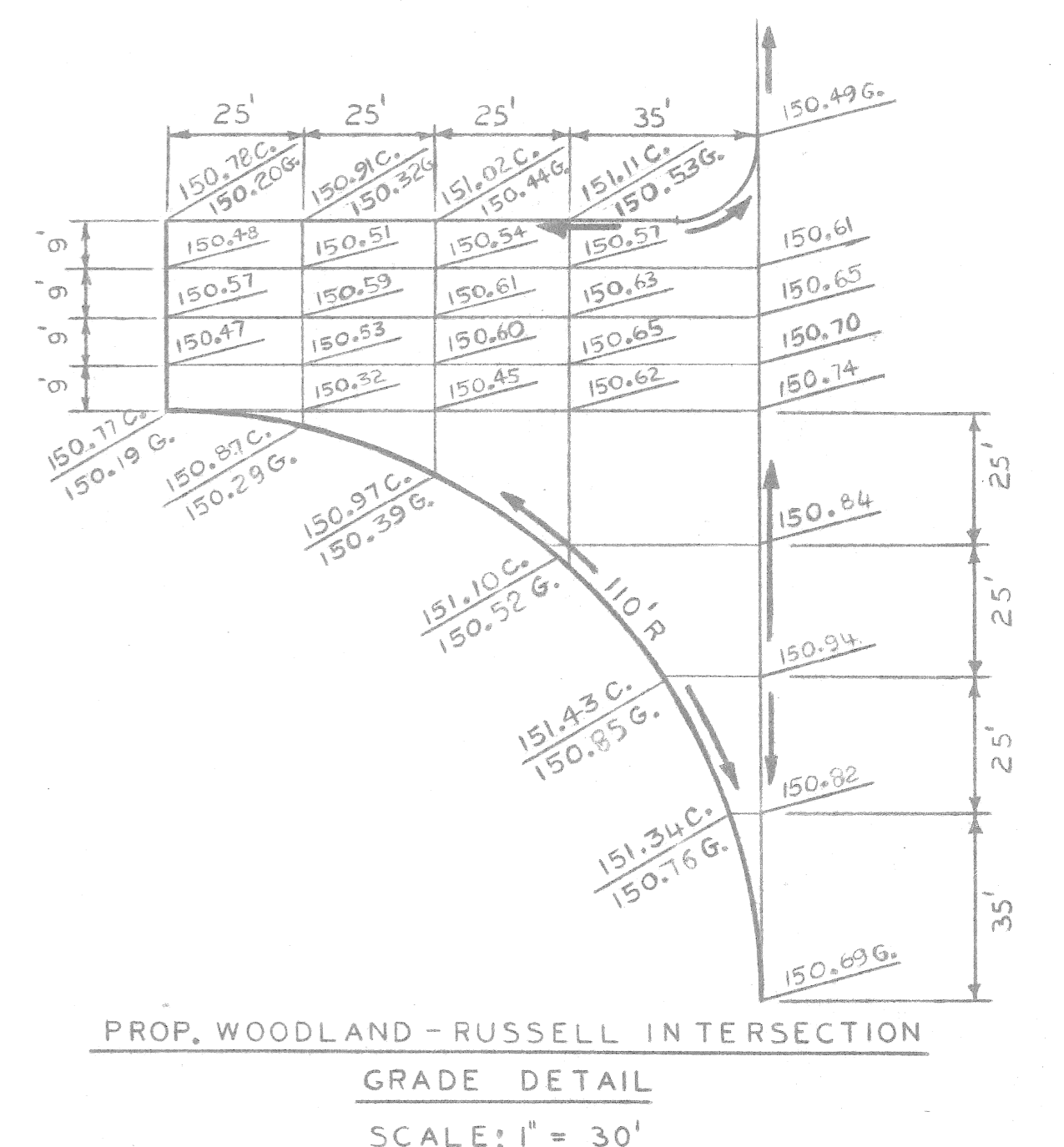
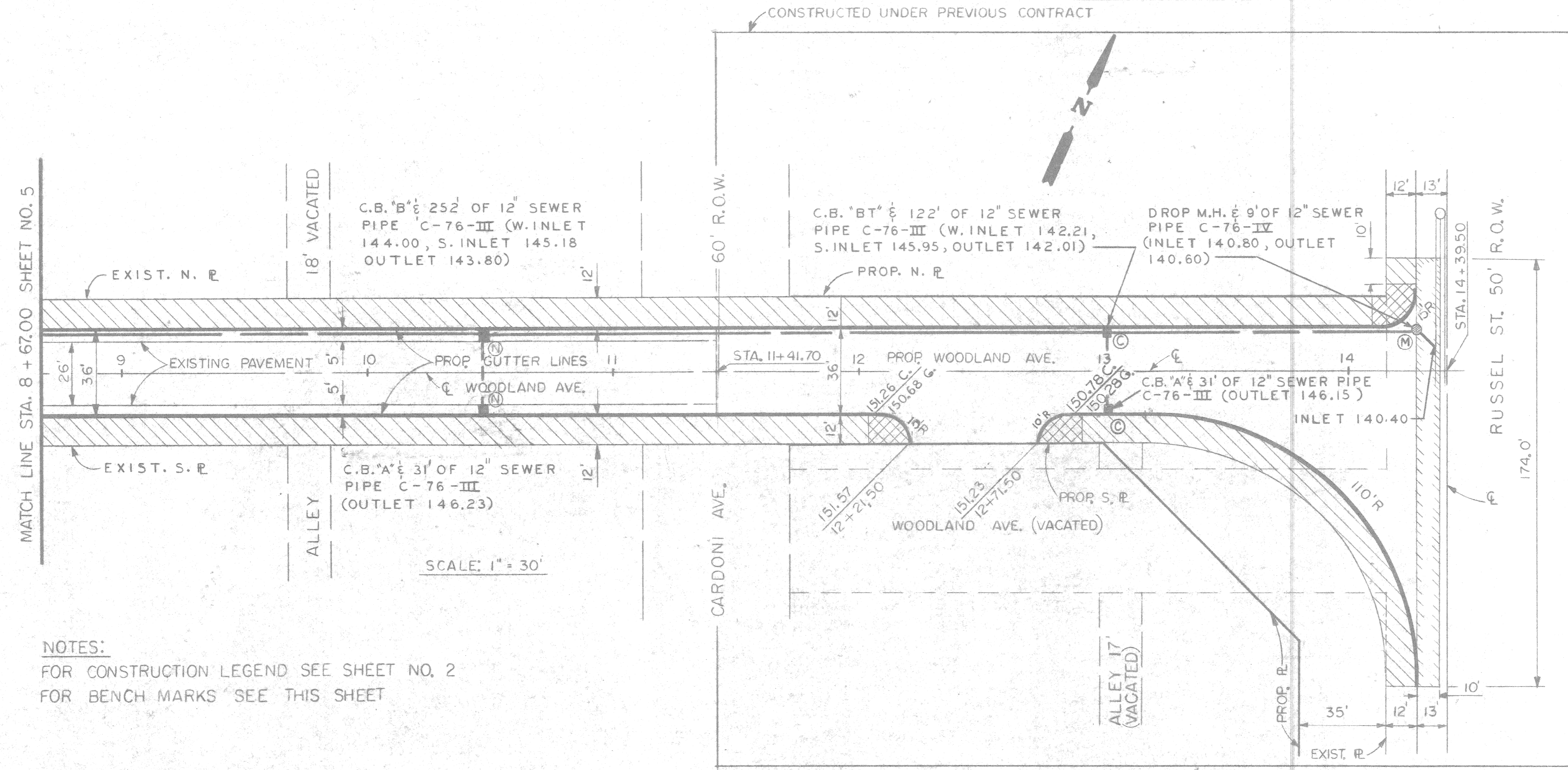
NOT IN CONTRACT

<table border="1"> <tr> <td>COORD</td> <td>DESCRIPTION</td> <td>DRN</td> <td>CK'D</td> <td>AP'VD</td> <td>DATE</td> </tr> <tr> <td colspan="6">REVISIONS LOCATED BY COORDINATES ON SHEET</td> </tr> </table>		COORD	DESCRIPTION	DRN	CK'D	AP'VD	DATE	REVISIONS LOCATED BY COORDINATES ON SHEET						<table border="1"> <tr> <td>DESIGNED BY</td> <td>N. H.</td> </tr> <tr> <td>DRAWN BY</td> <td>M. K.</td> </tr> <tr> <td>TRACED BY</td> <td></td> </tr> <tr> <td>CHECKED BY</td> <td></td> </tr> </table>	DESIGNED BY	N. H.	DRAWN BY	M. K.	TRACED BY		CHECKED BY		<p>APPROVED:</p> <p><i>William R. Talley</i></p> <p>ENGINEER OF STREETS</p>	<p>CITY OF DETROIT</p> <p>CITY ENGINEERING DEPARTMENT</p> <p>BUREAU OF STREETS AND HIGHWAYS</p> <p>FOR</p>	<p>RELOCATION, WIDENING AND RESURFACING</p> <p>OF WOODLAND AVE.</p> <p>FROM OAKLAND TO RUSSELL</p> <p>REMOVAL AND UTILITY SHEET</p>	<p>SHEET 4 OF 8 SHEETS</p> <p>CONTRACT NO. P.W - 6795</p> <p>ASSIGNMENT NO. 91-14-11</p> <p>DATE AUG 2, 1991</p>
COORD	DESCRIPTION	DRN	CK'D	AP'VD	DATE																					
REVISIONS LOCATED BY COORDINATES ON SHEET																										
DESIGNED BY	N. H.																									
DRAWN BY	M. K.																									
TRACED BY																										
CHECKED BY																										

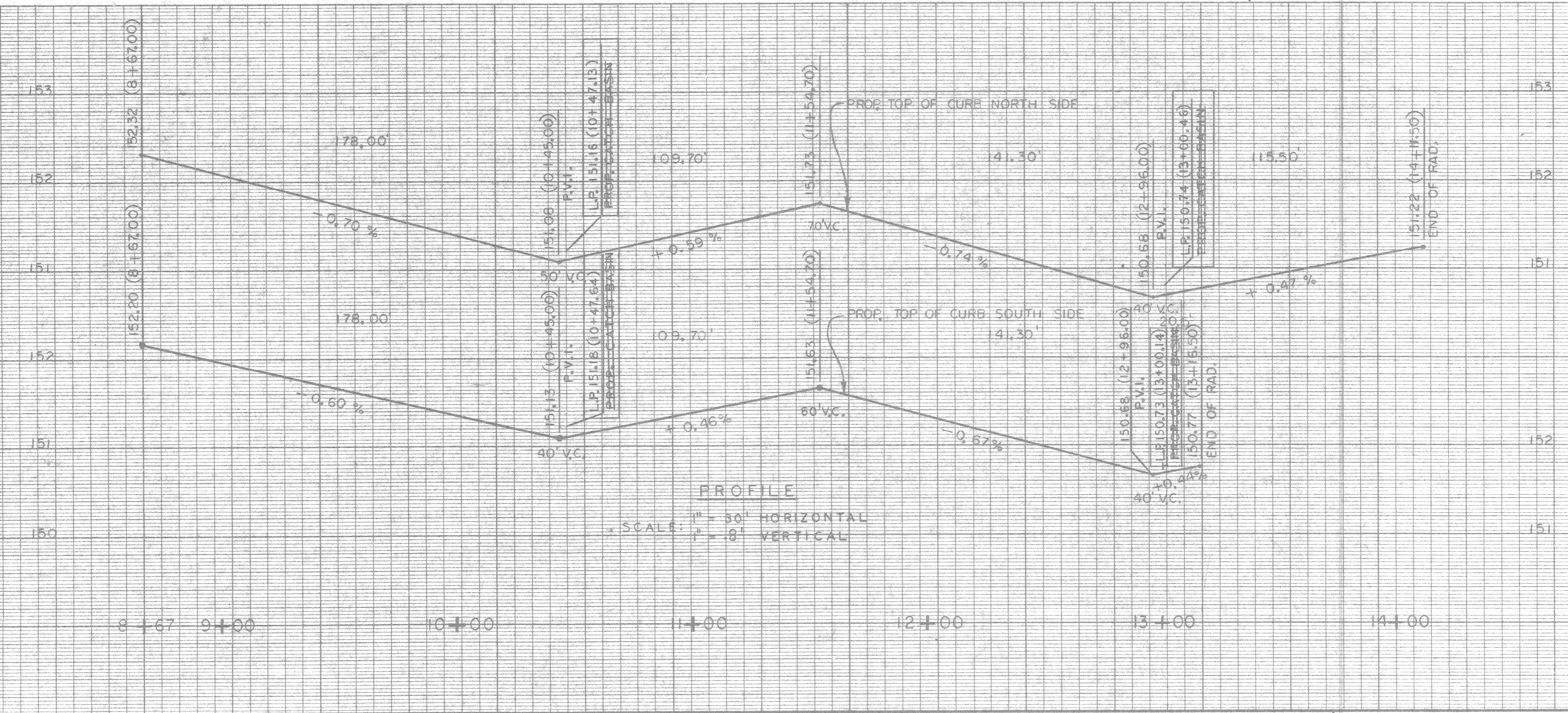


NOTES
 FOR CONSTRUCTION LEGEND SEE SHEET NO. 2
 FOR BENCH MARKS SEE SHEET NO. 6





NOTES:
FOR CONSTRUCTION LEGEND SEE SHEET NO. 2
FOR BENCH MARKS SEE THIS SHEET



REVISIONS DESCRIPTION DR. N. CK. D. AP. VO. DATE	PLAN	M, K.	BY		APPROVED	CITY OF DETROIT CITY ENGINEERING DIVISION - D. P. W. BUREAUS OF STREETS AND HIGHWAYS FOR	RELOCATION, WIDENING AND RESURFACING OF WOODLAND AVE. FROM OAKLAND TO RUSSELL PAVING PLAN	INDEX NO.	SHEET 6 OF 8 SHEETS
	GRADE	N, H.	CHECKED BY		ENGINEER OF STREETS			CONTRACT NO.	P.W. - 6795
	ESTIMATE	N, H.	APPROVED					ASSIGNMENT NO.	91-14-11
	FINAL		REVIEW					DATE	AUG., 1991

QUANTITIES

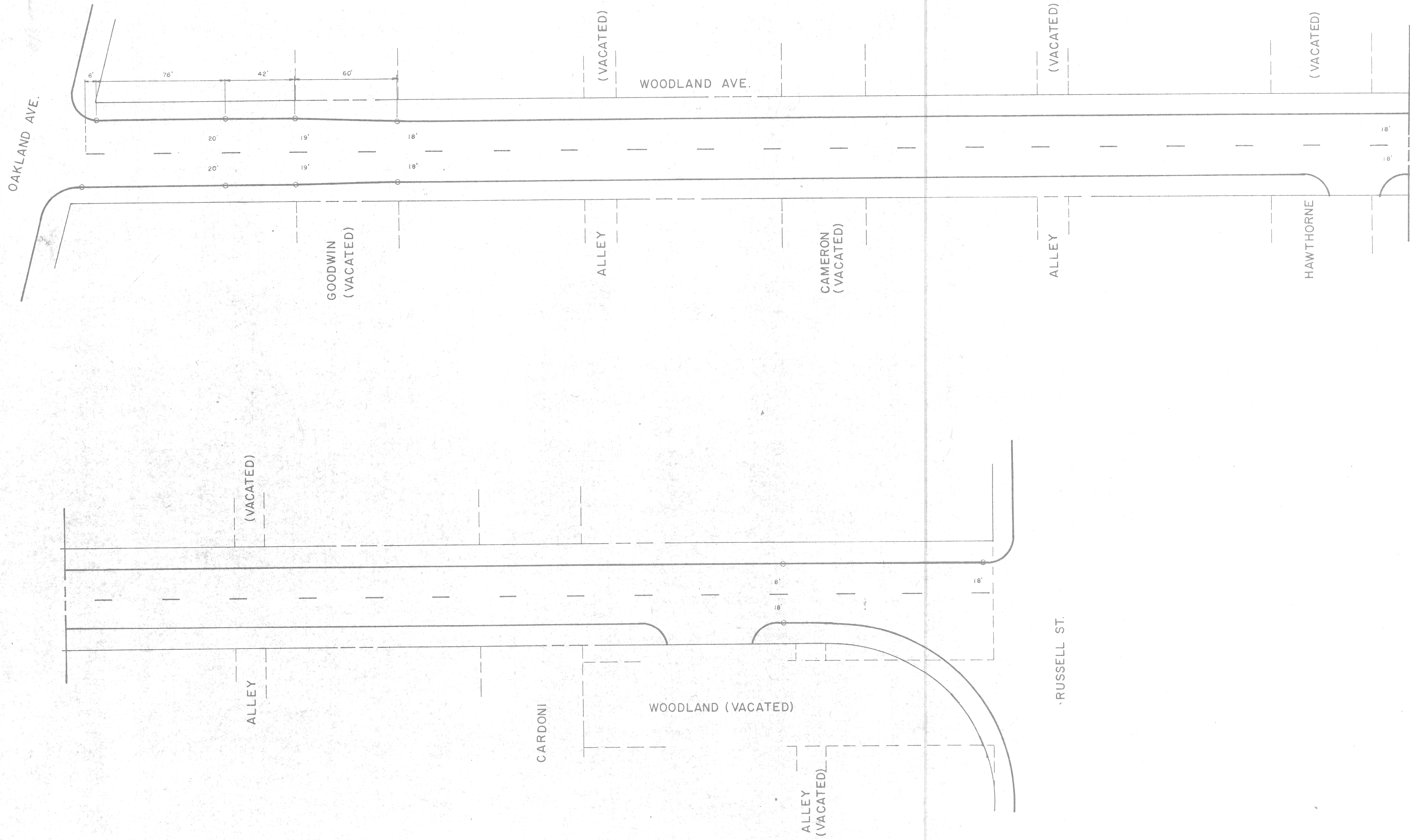
NO.	DESCRIPTION	UNIT	SHEET NO. 4	SHEET NO. 5	SHEET NO. 6	SHEET NO. 4	SHEET NO. 5	SHEET NO. 6	TOTAL 2	TOTAL 1	TOTAL BASE BID	GRAND TOTAL
	EXCAVATION	CYDS		439	211			772	353	244	772	650
	FILL - (22 A)	CYDS		84	58			171	10	6	171	142
	SIDEWALK REMOVAL	SFT	8960			1153			5636	3524	1153	8961
	DRIVEWAY REMOVAL	SFT	1,428						1258	170		1,428
	SEPERATE TYPE CURB REMOVAL - NONREINFORCED	LFT	1,520					170	920	600	170	1,520
	FILL-(GRADE A)	CYDS		160	67			40	157	110	40	227
	ALLEY PAVEMENT REMOVAL	SYDS	140		68				140	68		208
	STREET PAVEMENT REMOVAL NONREINFORCED	SYDS	348			236			219	129	236	348
	CHAIN LINK FENCE REMOVAL	LFT				105					105	
	NONREINFORCED CONCRETE SLAB REMOVAL	CYDS	16						16			16
	CATCH BASIN ABANDONMENT	EACH				6					6	
	MANHOLE ABANDONMENT	EACH	3						3	1		3
	TREE REMOVAL (4" TO 12")	EACH	2						2			2
	TREE REMOVAL (13" TO 18")	EACH	2						2			2
	RESETTING MANHOLES	EACH	2						2			2
	RESETTING CATCH BASINS	EACH	2						2			2
	RESETTING STOP BOX	EACH	2						2			2
	CATCH BASINS - "A"	EACH					2	2			4	
	CATCH BASINS - "B"	EACH					3	1			4	
	SEWERS - 12" PIPE C-76-III	LFT					467	612			1,079	
	SEWERS - 12" PIPE C-76-IV	LFT						9			9	
	DROP MANHOLE	EACH						1			1	
	PAVEMENT - 9" UNIFORM REINFORCED CONCRETE WITH INTEGRAL CURB	SYDS						722			722	
	CATCH BASIN "BT" ("B" WITH TRAP)	EACH						1			1	
	PAVEMENT - 9" UNIFORM UNREINFORCED CONCRETE WITH INTEGRAL CURB	SYDS						752			752	
	BASE PAVEMENT - 9" UNIFORM REINFORCED CONCRETE WITH INTEGRAL CURB	SYDS		703	341				598	414		1,044
	CONCRETE BASE PAVEMENT - 6" UNREINFORCED WITH INTEGRAL CURB	SYDS					14	6			20	
	INTEGRAL CURB AND SIDEWALK - 2 FT. WIDE	LFT		233					233			233
	SIDEWALK - 4" STANDARD	SFT		11,849	6,275			6,174	11,34	6,990	6,174	18,125
	SIDEWALK - 6" STANDARD	SFT		245				461		245	461	245
	STRIP AND ADJUST ASPHALT SURFACE	SYDS						252			252	
	PERFORMED WHITE OR YELLOW THERMOPLASTIC PAVEMENT MARKINGS - 4"	LFT		200	70			70	190	80	70	270
	CONDITIONING	SYDS		486	127				235	97		613
	CLEANING	SYDS		664	176				850	274		840
	REMOVE BITUMINOUS SURFACE	SYDS		1,364	489				1,260	593		1,853
	BITUMINOUS BOND COAT	GALS		378	119				352	145		497
	CLEANING STRUCTURES	EACH		2					2			2
	MAINTAINING TRAFFIC	L.S.										1.5
	WEARING SURFACE MIXTURE											
	a) 31A (CD) - SLAG 1" AVERAGE THICKNESS	TONS		162	57				150	69		219
	b) 31A (CD) - NATURAL 1" AVERAGE THICKNESS	TONS		172	61				159	72		233
	BINDER COURSE MIXTURE											
	a) 25A (MOD) - SLAG 1 1/2" AVERAGE THICKNESS	TONS		236	83				218	101		319
	b) 25A (MOD) - NATURAL 1 1/2" AVERAGE THICKNESS	TONS		257	91				238	110		348
	REMOVE EXISTING CONCRETE BASE	SYDS			95							95
	REPLACE CONCRETE BASE WITH GRADE A CONCRETE	SYDS			95							95
	TEST CORES	EACH	1									1
	CATCH BASIN ADJUSTMENT	EACH		5	2							

DESIGNED BY	M. K.	APPROVED:	<i>William R. Valley</i> ENGINEER OF STREETS
DRAWN BY	M. K.		
TRACED BY			HIGHWAY ENGINEER
CHECKED BY	<i>Dodson H.</i>		

CITY OF DETROIT
CITY ENGINEERING DEPARTMENT
BUREAUS OF STREETS AND HIGHWAYS
FOR

RELOCATION, WIDENING AND RESURFACING
OF WOODLAND AVE.
FROM OAKLAND TO RUSSELL
QUANTITIES SHEET

SHEET 7 OF 8 SHEETS
CONTRACT NO. PW - 6795
ASSIGNMENT NO. 91-14-11
DATE AUG. 3, 1991



COORD	DESCRIPTION	REV	CHK	APPR	DATE

REVISIONS LOCATED BY COORDINATES ON SHEET

DESIGNED BY	EL	APPROVED:	
DRAWN BY	ER		
TRACED BY			
CHECKED BY			

CITY OF DETROIT
 DEPARTMENT OF TRANSPORTATION
 PLANNING & TRAFFIC ENGINEERING

RELOCATION, WIDENING AND RESURFACING
 OF WOODLAND AVE.
 FROM OAKLAND TO RUSSELL

PAVEMENT MARKINGS

SHEET 8 OF 8 SHEETS
SCALE: 1" = 30'
ASSIGNMENT NO 91-14-11
DATE AUG, 1991